

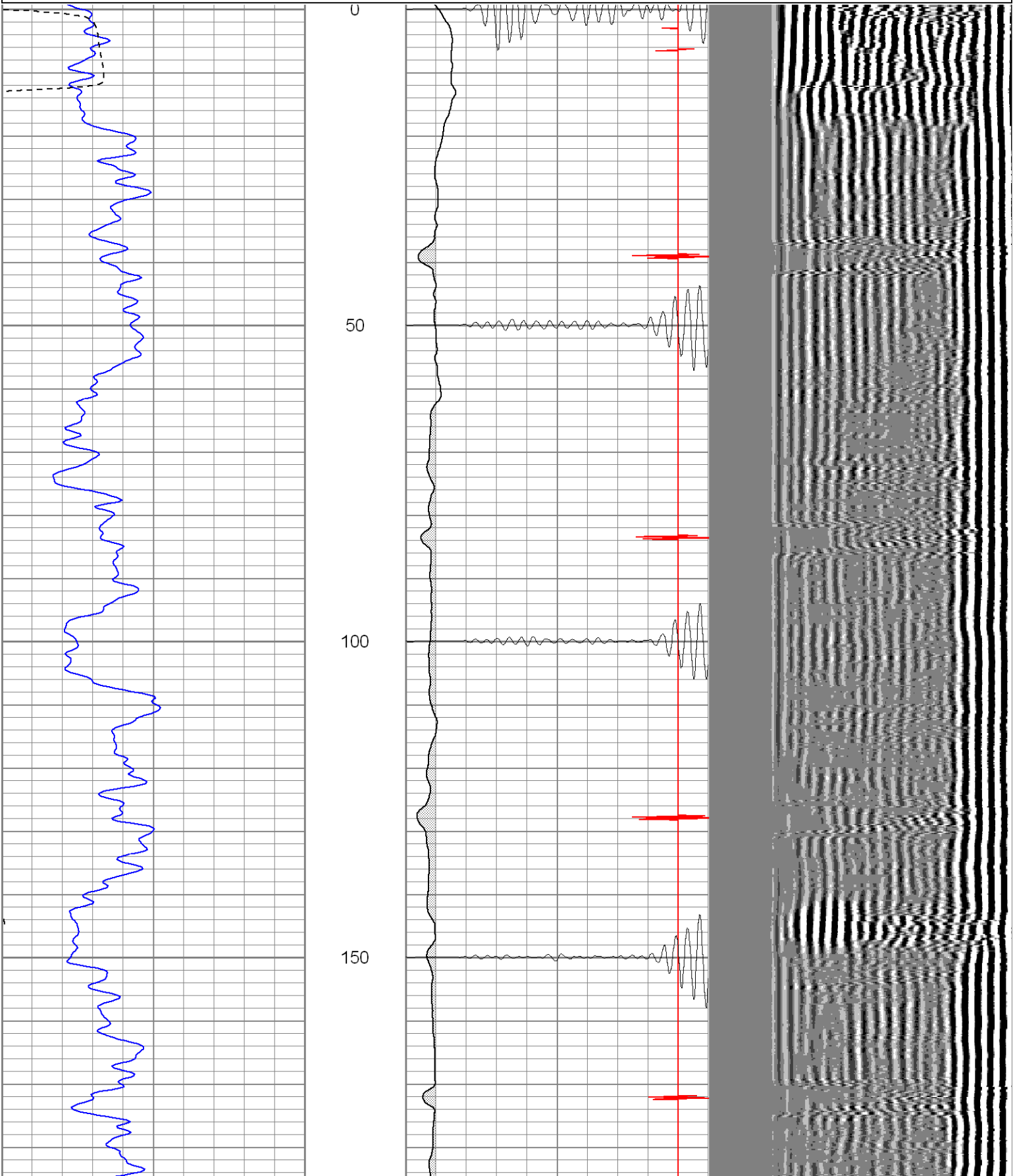
CEMENT BOND GAMMA RAY

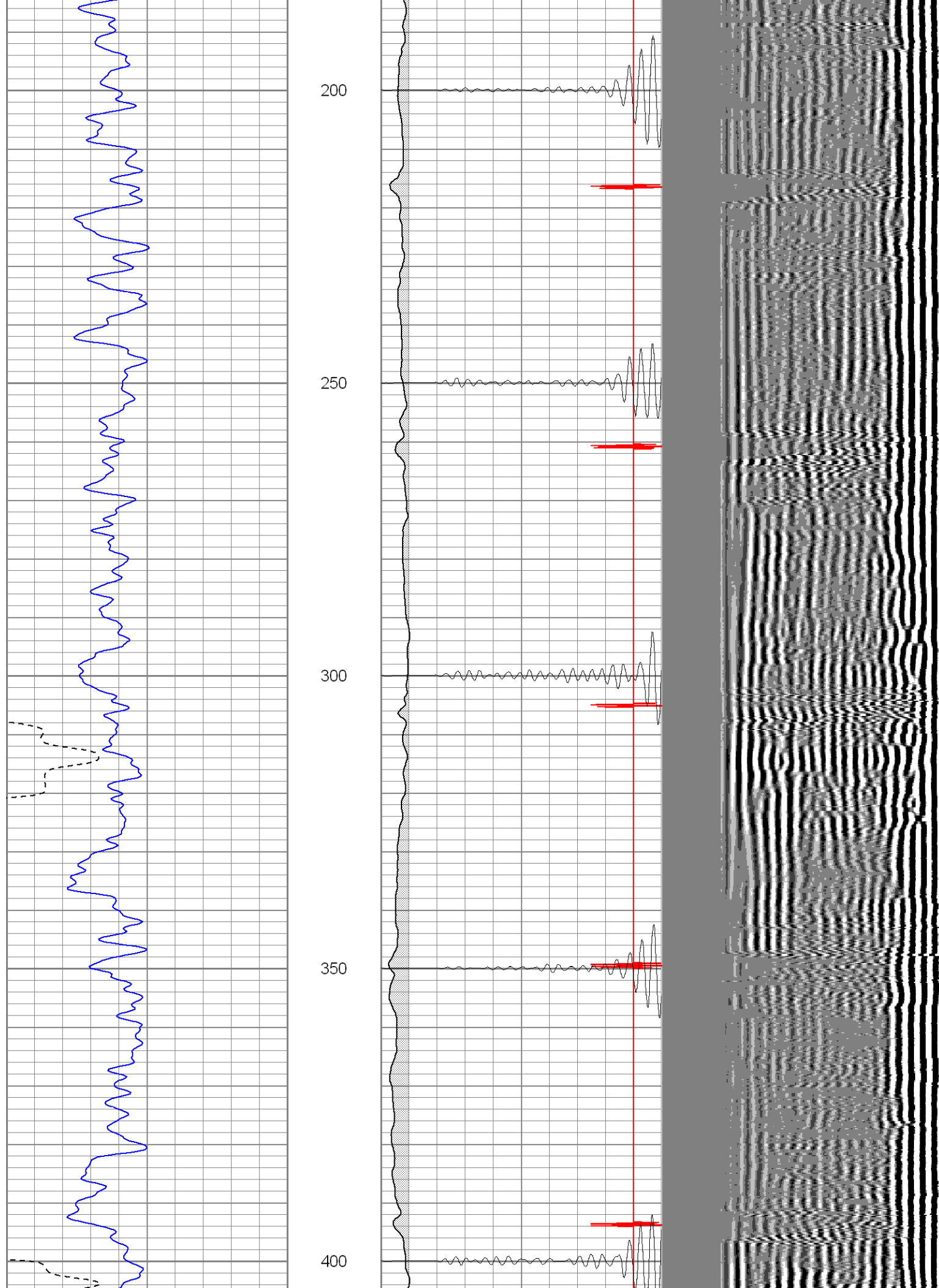
<<< Fold Here >>>
All interpretations are opinions based on inferences from electrical or other measurements and we cannot and do not guarantee the accuracy or correctness of any interpretation, and we shall not, except in the case of gross or willful negligence on our part, be liable or responsible for any loss, costs, damages, or expenses incurred or sustained by anyone resulting from any interpretation made by any of our officers, agents or employees. These interpretations are also subject to our general terms and conditions set out in our current Price Schedule.
Comments
Alamosito, Right At Little Compressor, Next Right, Stay On Main Road To Staging Area, Go Left At Y, Stay On Main Road Dead End On Location.

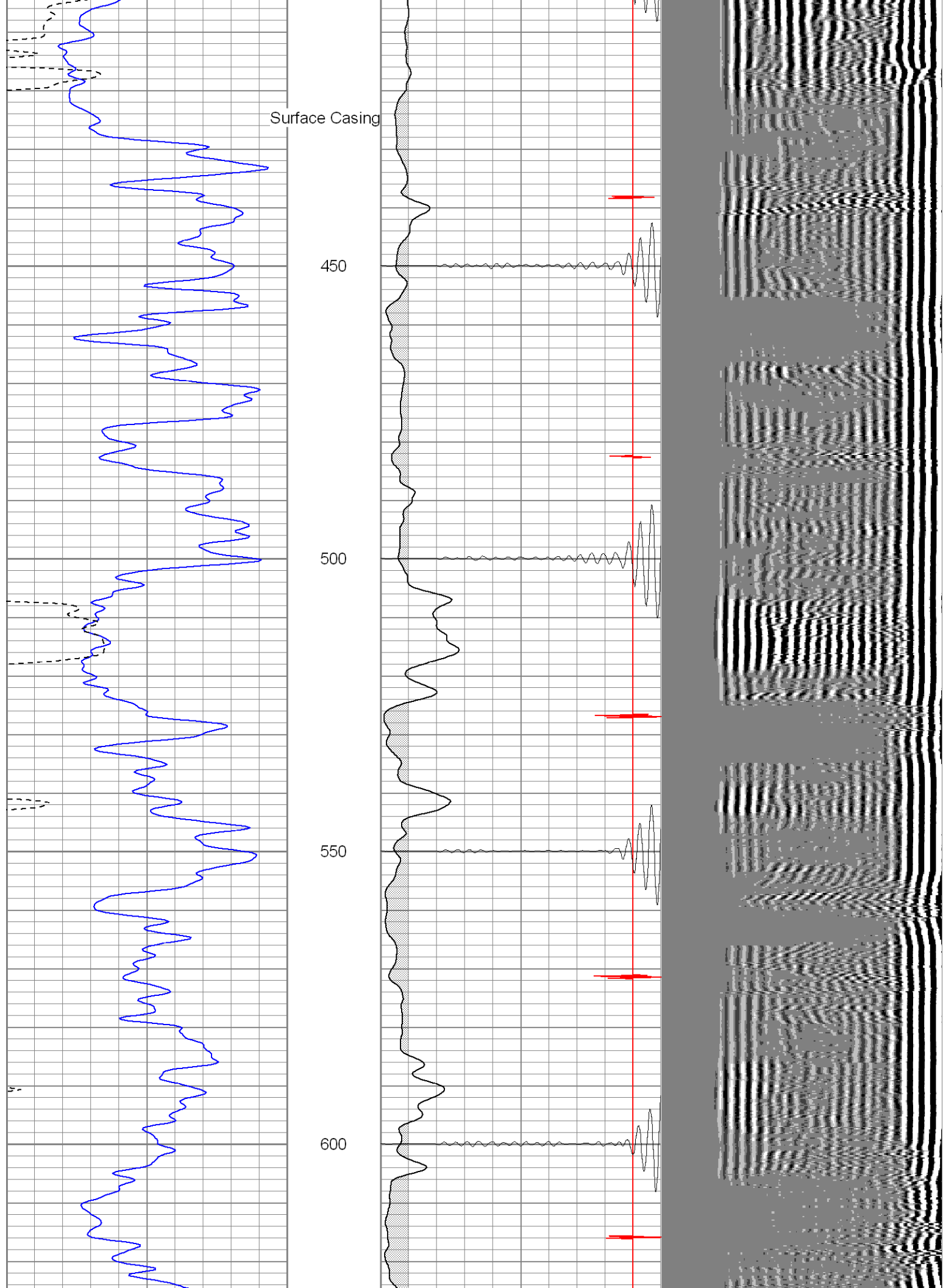
Main Pass

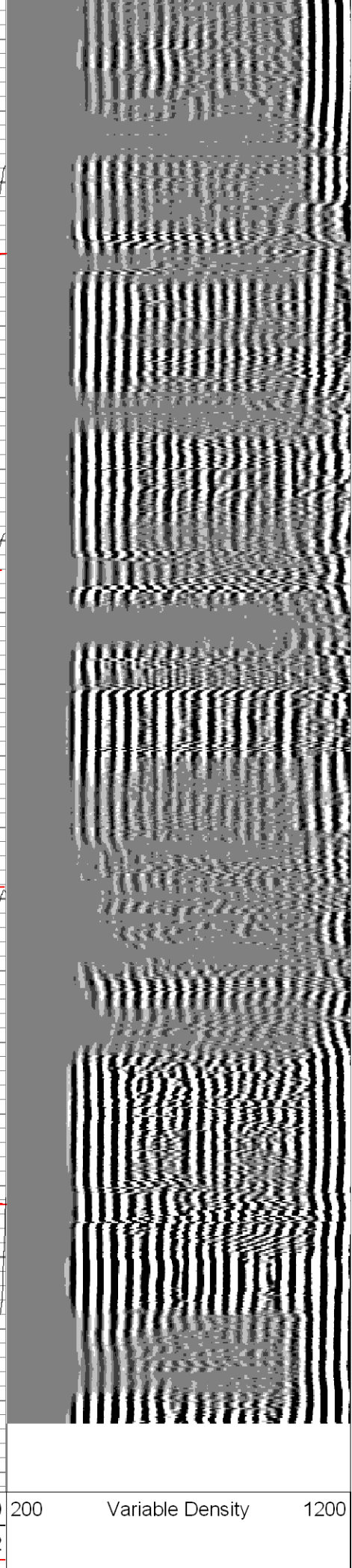
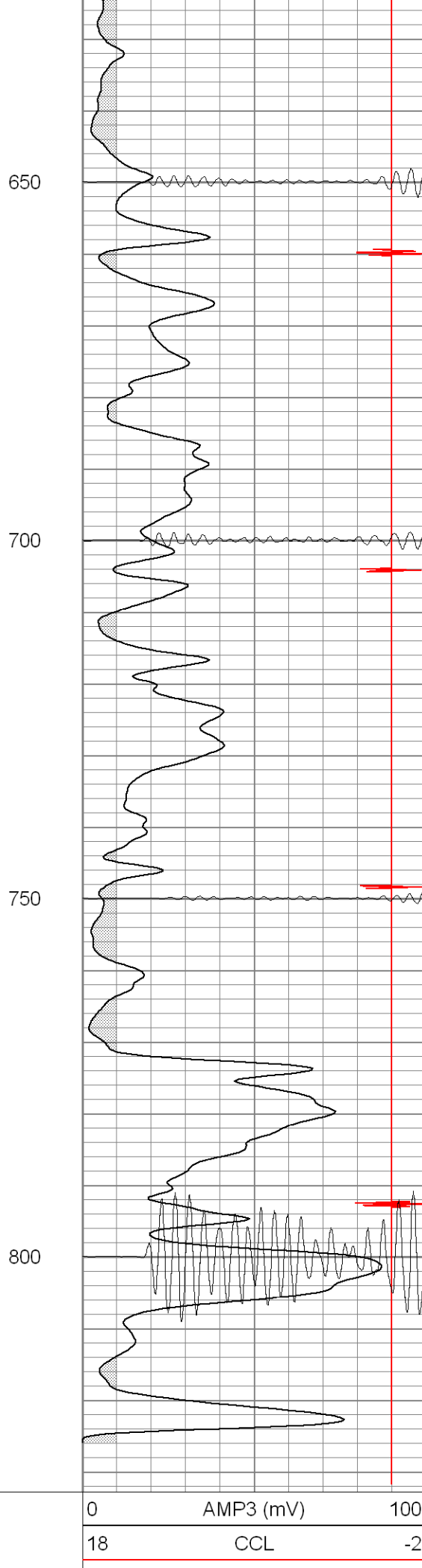
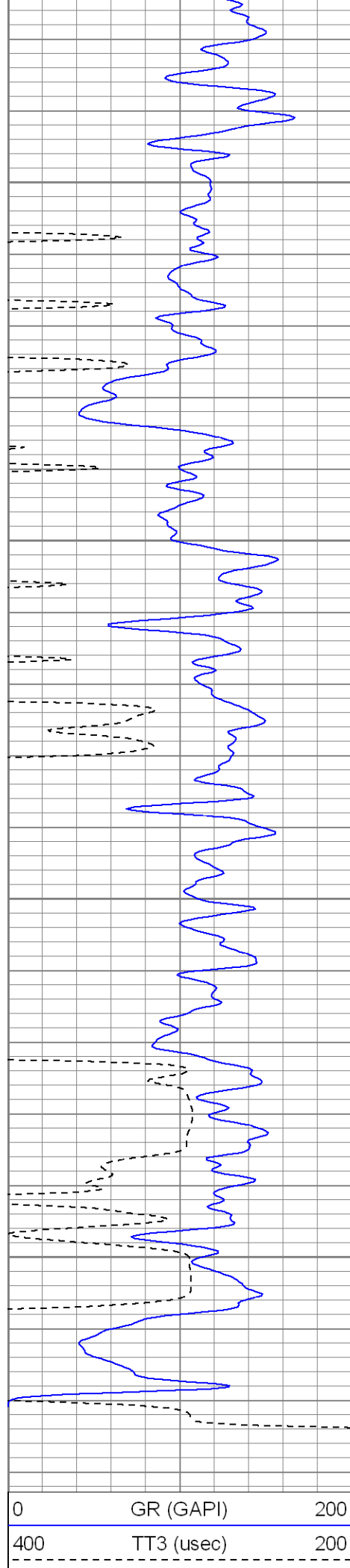
Database File: ac06-04b010606.db
Dataset Pathname: pass2
Presentation Format: cblrt
Dataset Creation: Fri Jan 06 12:41:32 2006 by Log Warrior 7.0 STD Cas
Charted by: Depth in Feet scaled 1:240

0	GR (GAPI)	200	0	AMP3 (mV)	100	200	Variable Density	1200
400	TT3 (usec)	200	18	CCL	-2			
			200	CBL5	1200			









Patterson

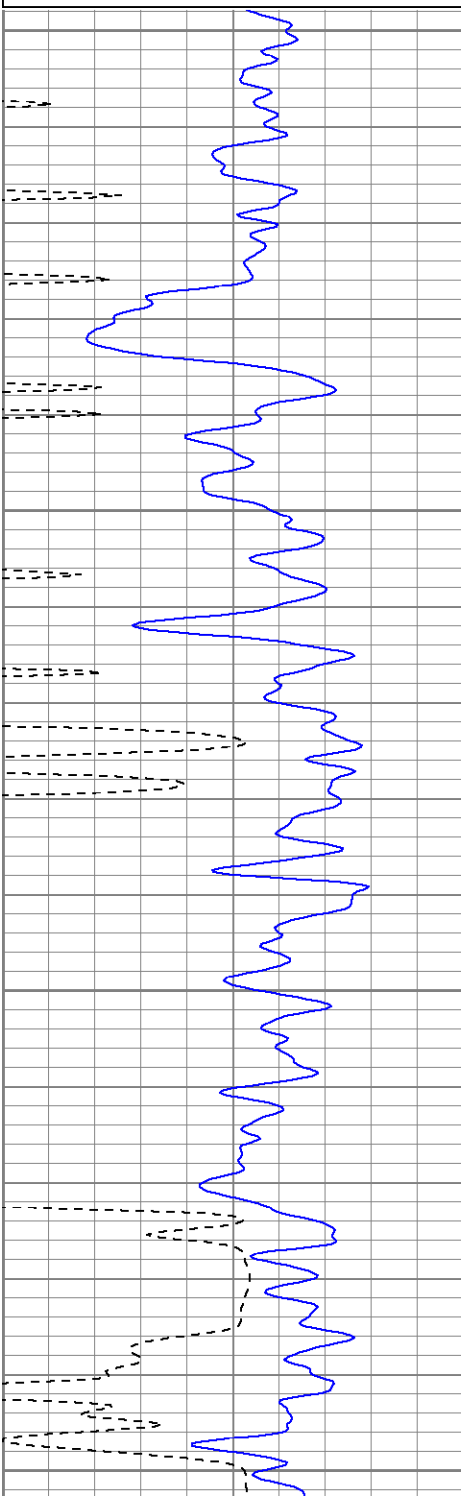
Repeat Section

Database File: ac06-04b010606.db
Dataset Pathname: pass1
Presentation Format: cblrt
Dataset Creation: Fri Jan 06 12:34:27 2006 by Log Warrior 7.0 STD Cas
Charted by: Depth in Feet scaled 1:240

0	GR (GAPI)	200
400	TT3 (usec)	200

0	AMP3 (mV)	100
18	CCL	-2
200	CBL5	1200

200	Variable Density	1200
-----	------------------	------

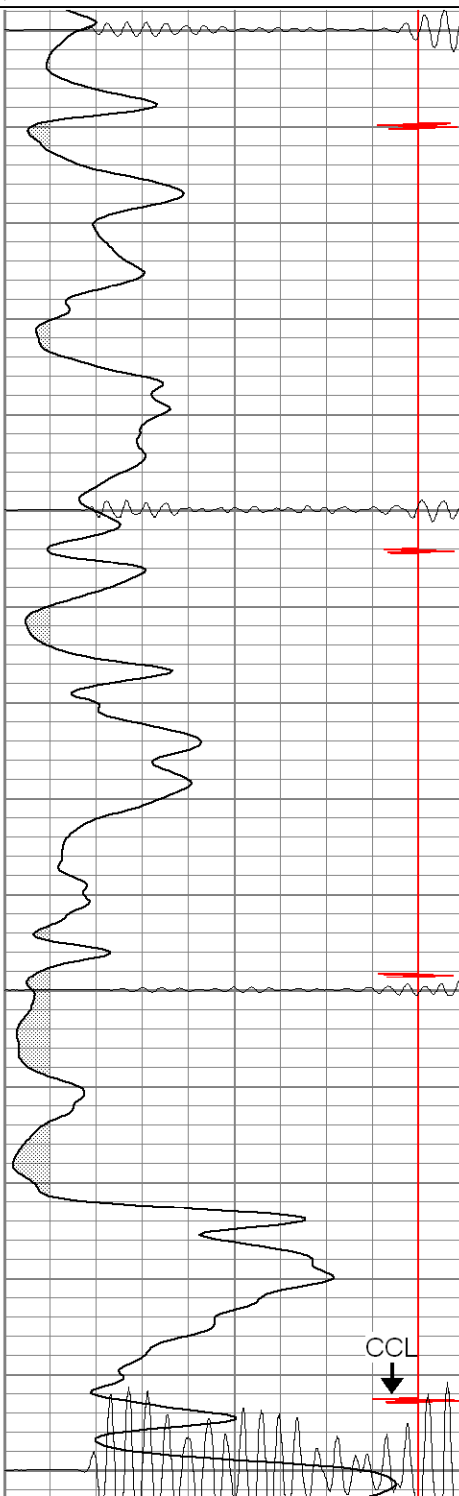


650

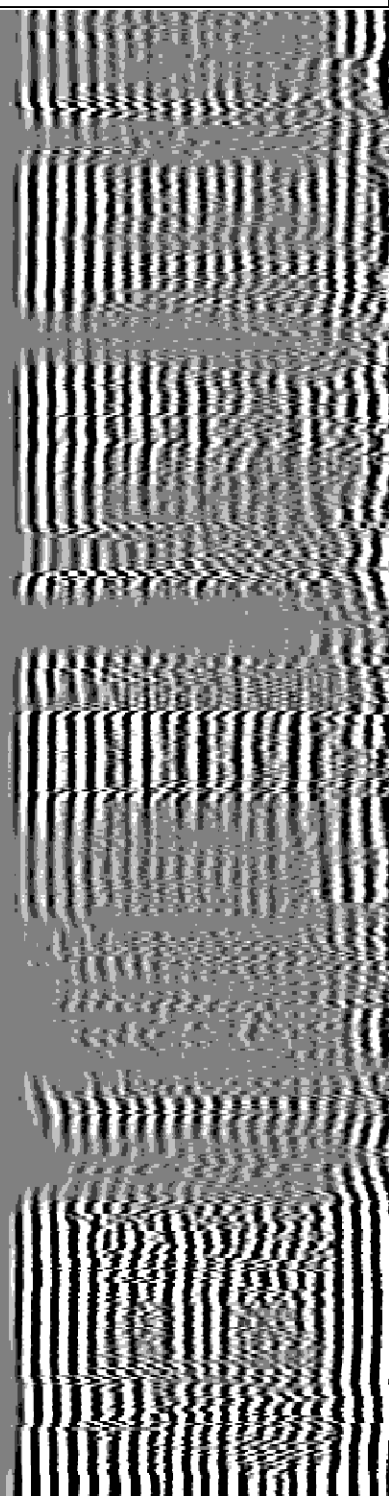
700

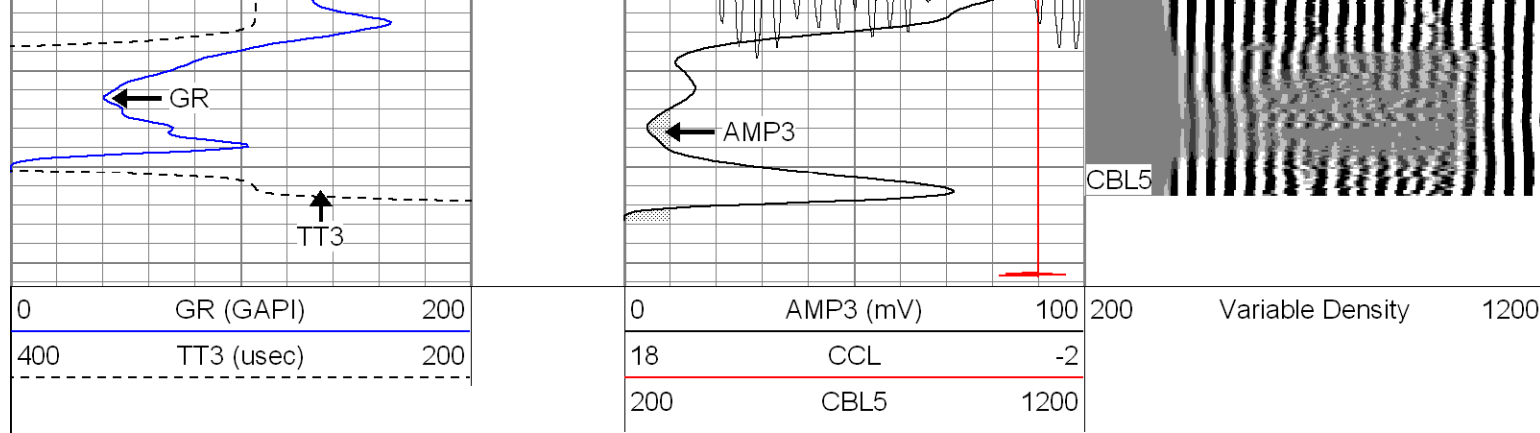
750

800



CCL





Cement Bond Log Calibration Report

Serial Number:	Titan5		
Tool Model:	2		
Performed:	Fri Jan 06 12:33:46 2006		
Depth:	2158.27	ft	
Casing Diameter:	5.5	in	
	3' Spacing	5' Spacing	
Signal Zero:	0	0	mV
Calibrated Amplitude:	85	85	mV
Reading at Signal Zero:	0	0	V
Reading in Free Pipe:	0.85	0.9	V
Gain:	100	94.4444	
Offset:	0	0	

Gamma Ray Calibration Report

Serial Number:	Titan5	
Tool Model:	T2	
Performed:	Tue Dec 27 12:56:41 2005	
Calibrator Value:	1.0	GAPI
Background Reading:	0.0	cps
Calibrator Reading:	1.0	cps
Sensitivity:	1.2000	GAPI/cps