

<b>BRAN-DEX</b>		<b>WIRELINE SERVICES</b>	
<b>CEMENT BOND GAMMA RAY COLLAR CORRELATION LOG</b>			
Company K.P. KAUFMAN COMPANY Well CAMENISCH 41-32 Field WATTENBERG County WELD State COLORADO		Location: AP1 # : 05-123-24569-00 SW / NE Other Services	
Well CAMENISCH 41-32 Field WATTENBERG County WELD State COLORADO		Permanent Datum GROUND LEVEL Elevation 4945 Log Measured From KELLY BUSHING Drilling Measured From KELLY BUSHING	
Run Number ONE		Date 21 - MARCH - 2007	
Depth Driller 7460		Run Number ONE	
Depth Logged 7378		Depth Driller 7460	
Bottom Logged Interval 7371		Depth Logged 7378	
Top Log Interval 3220		Bottom Logged Interval 7371	
Open Hole Size 7 7/8		Top Log Interval 3220	
Type Fluid WATER		Open Hole Size 7 7/8	
Density / Viscosity ---		Type Fluid WATER	
Max. Recorded Temp. NOT RECORDED		Density / Viscosity ---	
Estimated Cement Top 3370		Max. Recorded Temp. NOT RECORDED	
Time Well Ready ---		Estimated Cement Top 3370	
Time Logger on Bottom ---		Time Well Ready ---	
Equipment Number 455/MASTWHITE		Time Logger on Bottom ---	
Location BRIGHTON		Equipment Number 455/MASTWHITE	
Recorded By HAYES		Location BRIGHTON	
Witnessed By MR. RICK OHLEMEIER		Recorded By HAYES	
Borehole Record		Witnessed By MR. RICK OHLEMEIER	
Run Number Bit From To		Borehole Record	
Size Weight From To		Run Number Bit From To	
WgVft Top Bottom		Size Weight From To	
11.6 SURFACE		WgVft Top Bottom	
4.5		11.6 SURFACE	
Casing Record		4.5	
Surface String		Casing Record	
Prot. String		Surface String	
Production String		Prot. String	
Liner		Production String	

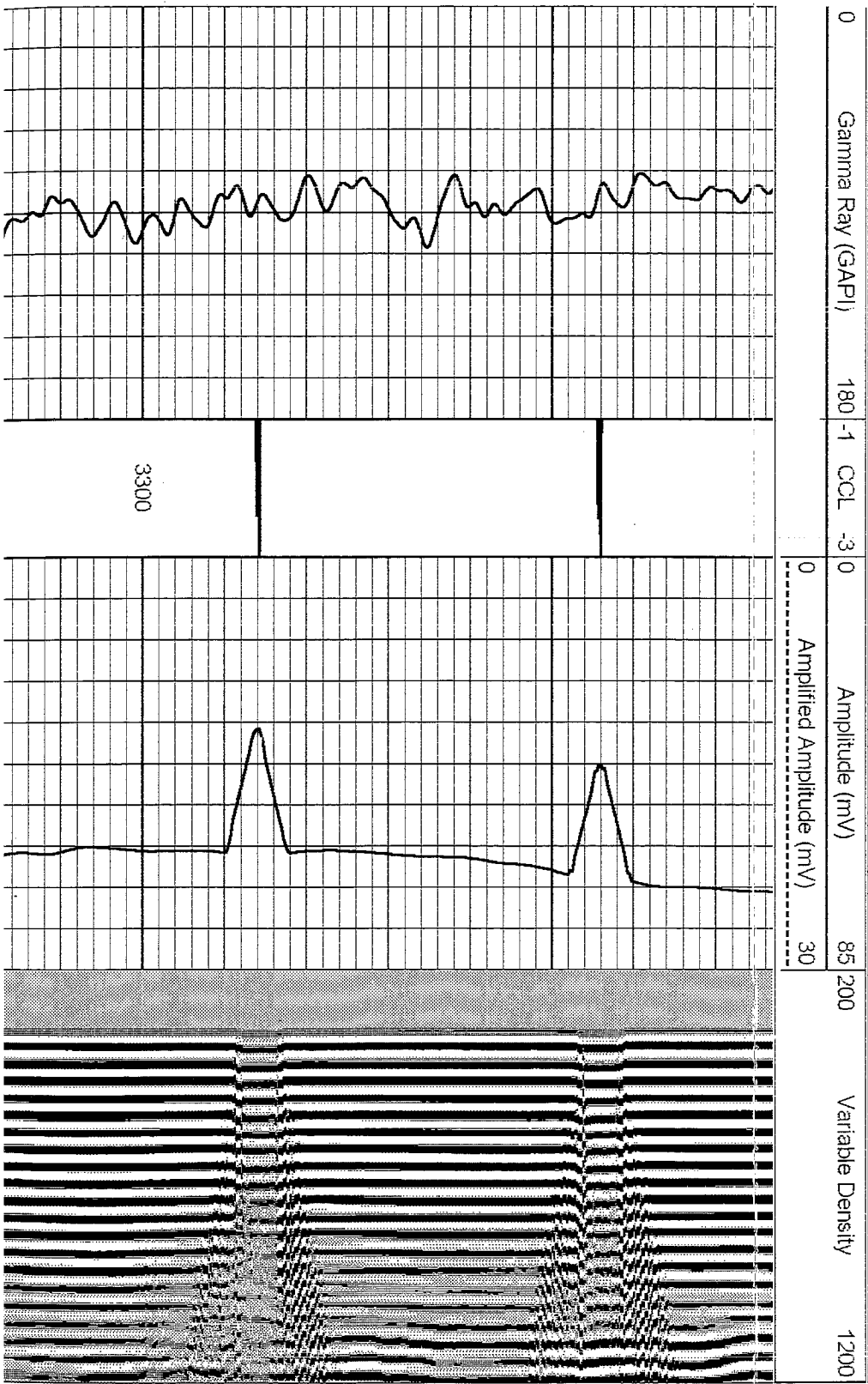
<<< Fold Here >>>

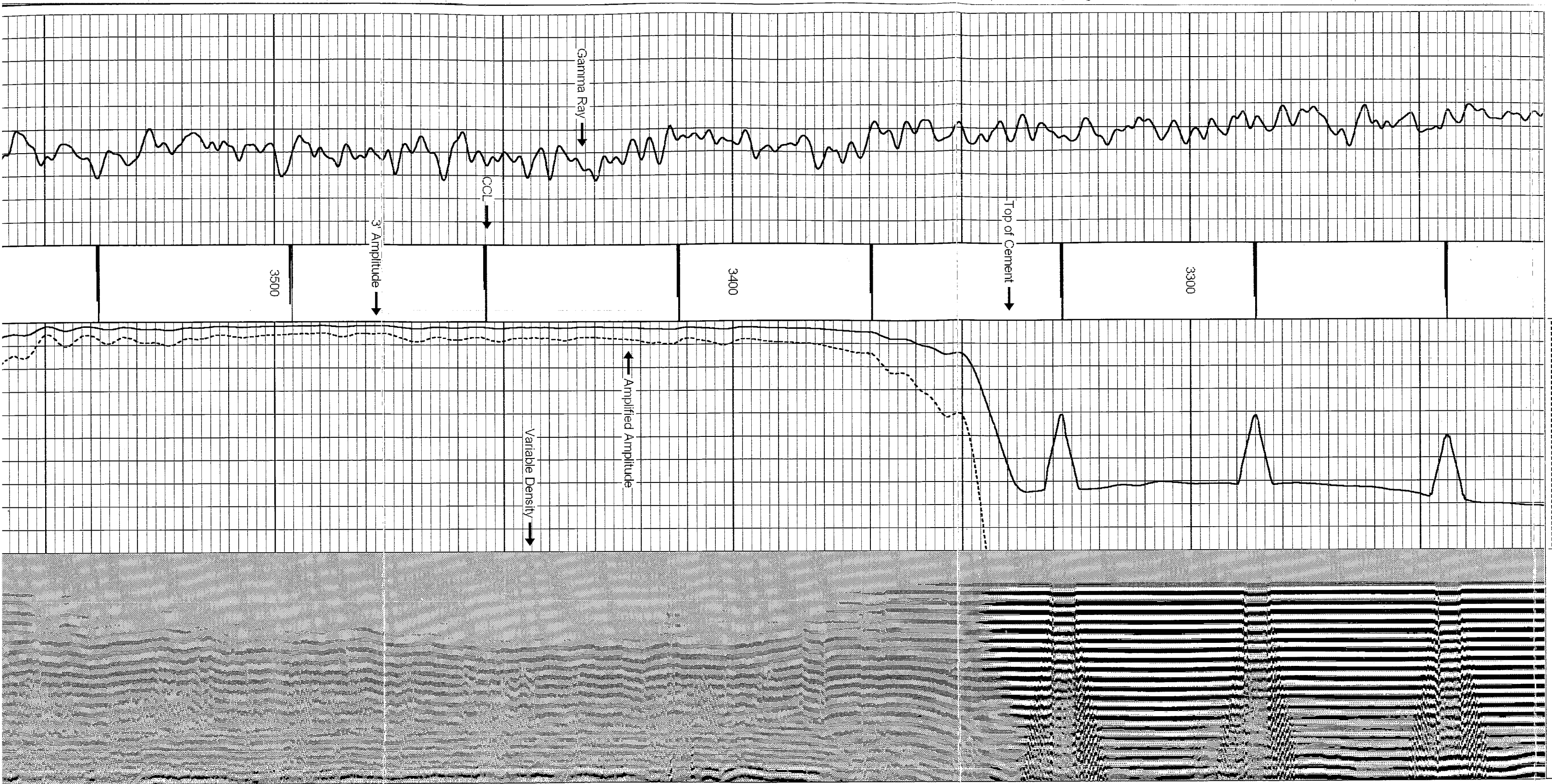
All interpretations are opinions based on inferences from electrical or other measurements and we cannot and do not guarantee the accuracy or correctness of any interpretation, and we shall not, except in the case of gross or willful negligence on our part, be liable or responsible for any loss, costs, damages, or expenses incurred or sustained by anyone resulting from any interpretation made by any of our officers, agents or employees. These interpretations are also subject to our general terms and conditions set out in our current Price Schedule.

Comments

LOG CORRELATED TO DI - CD - CN LOG  
DATED 03 - 04 - 2007  
LOG SPLIT AT 5000  
FOR CORRELATION PURPOSES

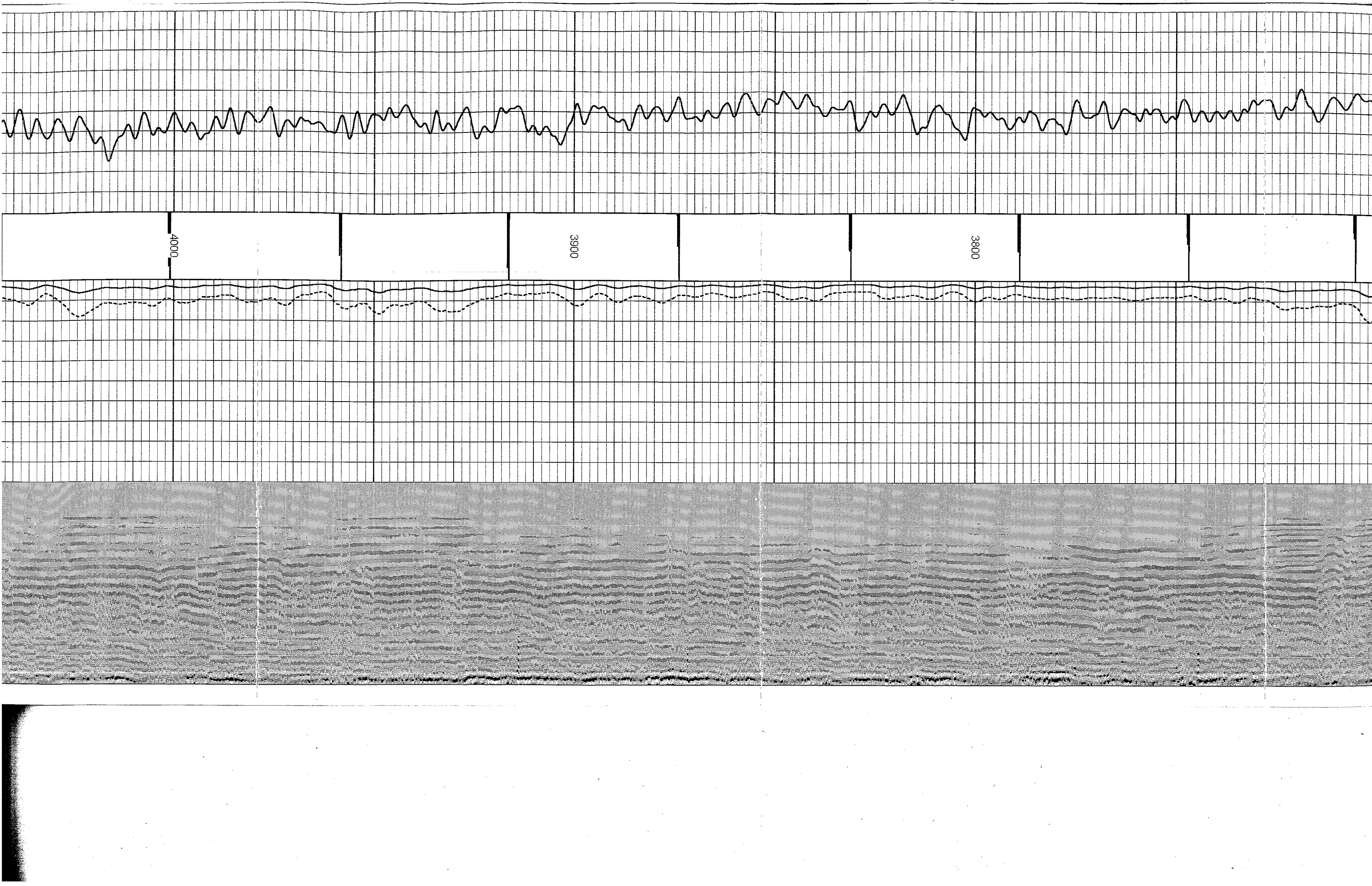
Database File: camenisch41-32.db  
Dataset Pathname: pass2  
Presentation Format: cbix  
Dataset Creation: Wed Mar 21 12:04:41 2007 by Log Warrior 7.0 STD Cas  
Charted by: Depth in Feet scaled 1:240



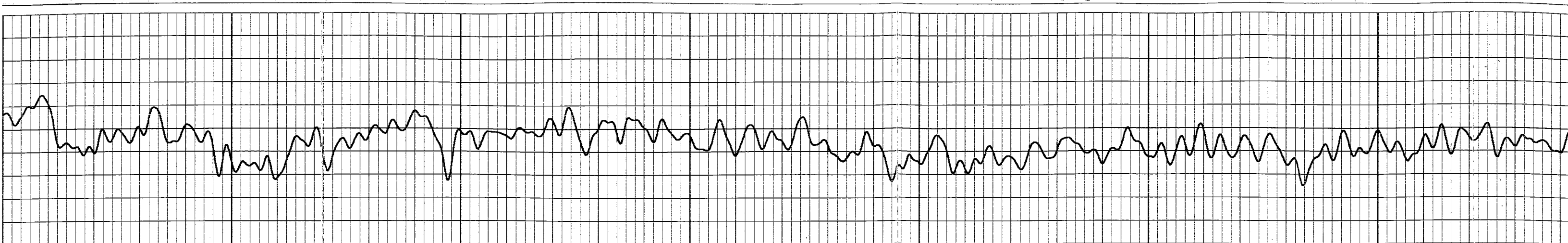




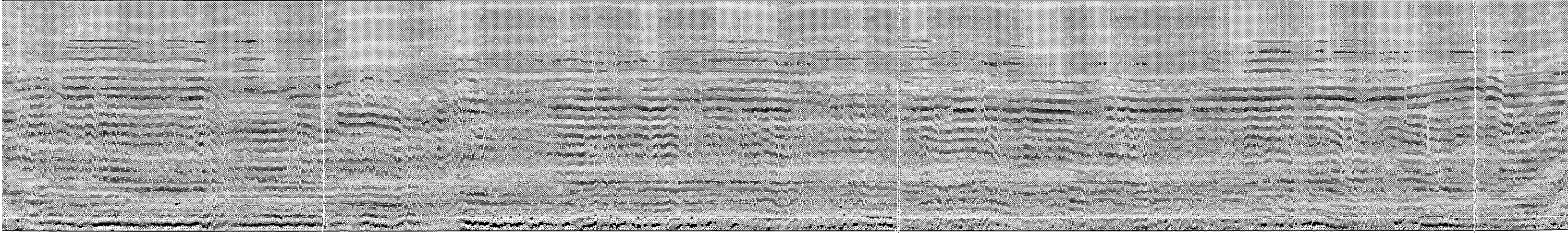
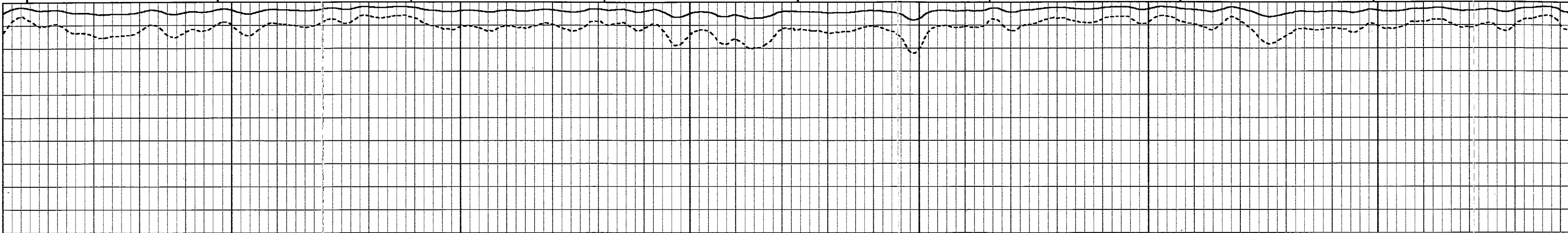


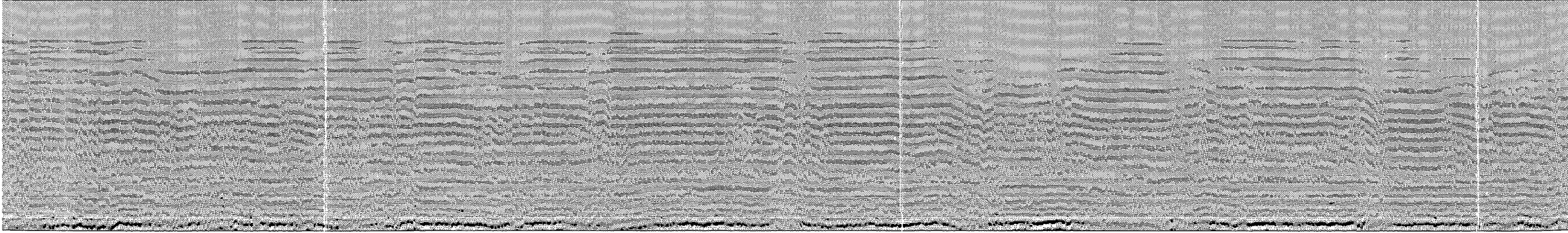
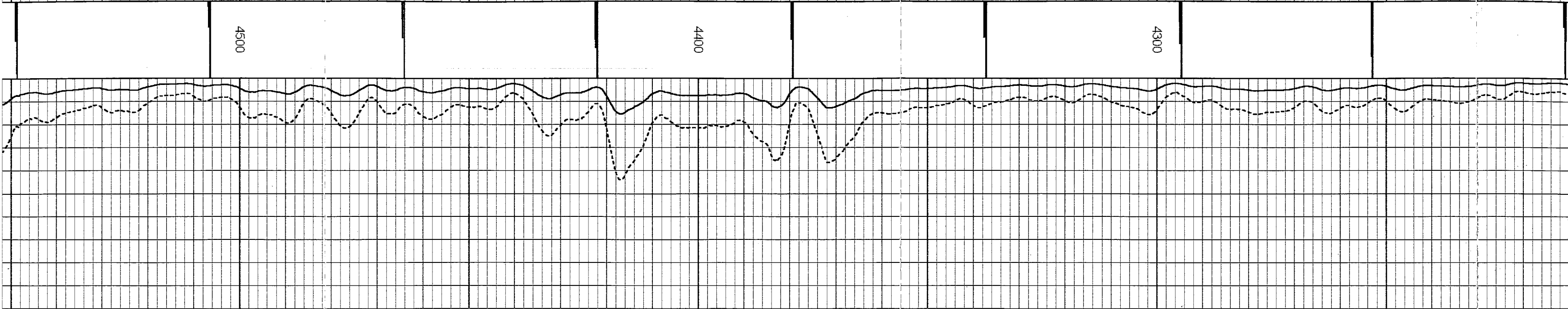
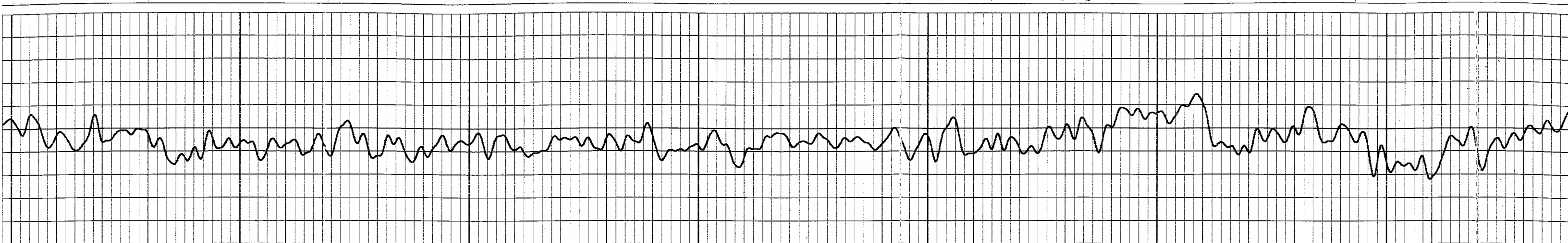




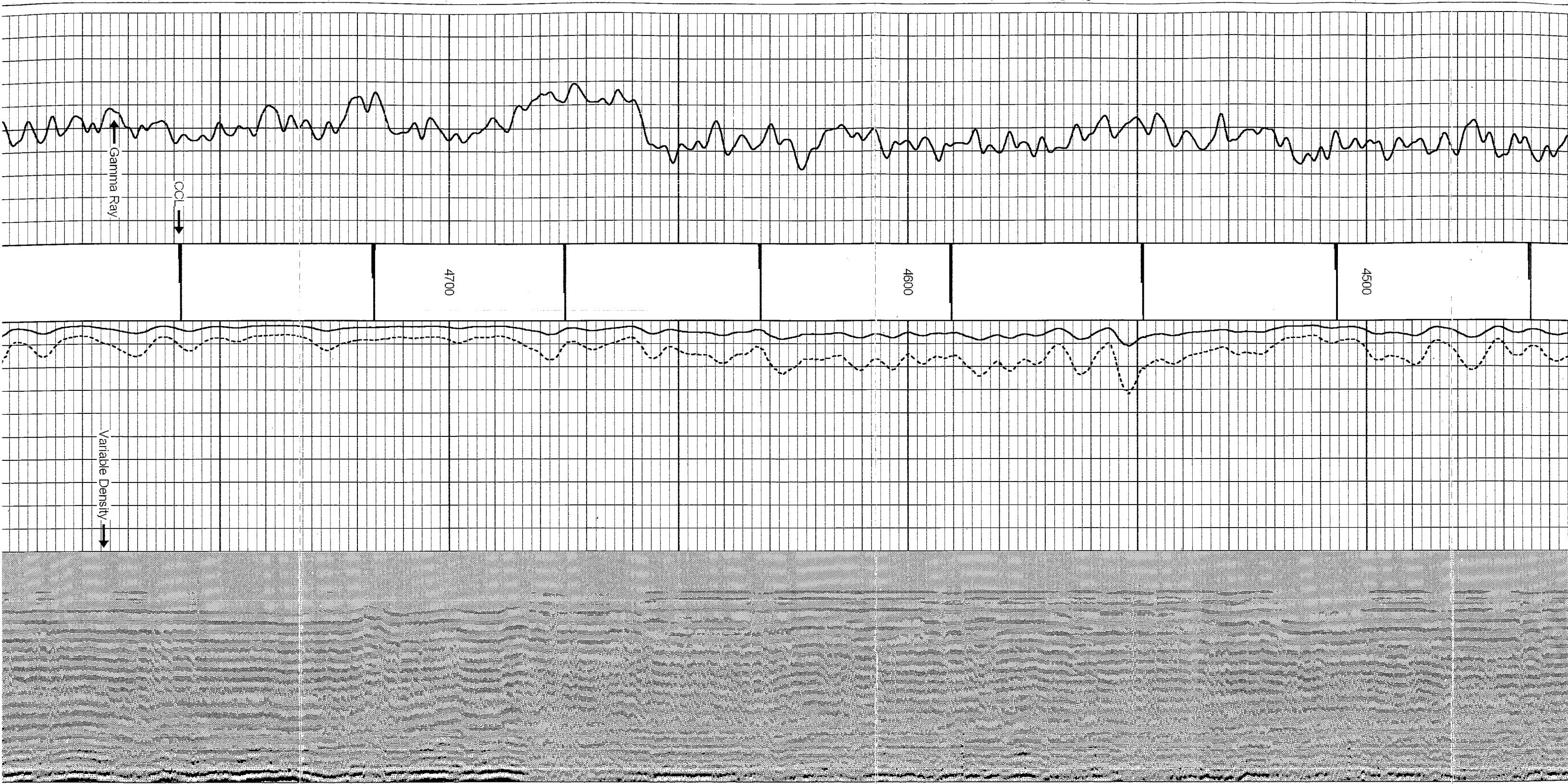


4200 4100 4000



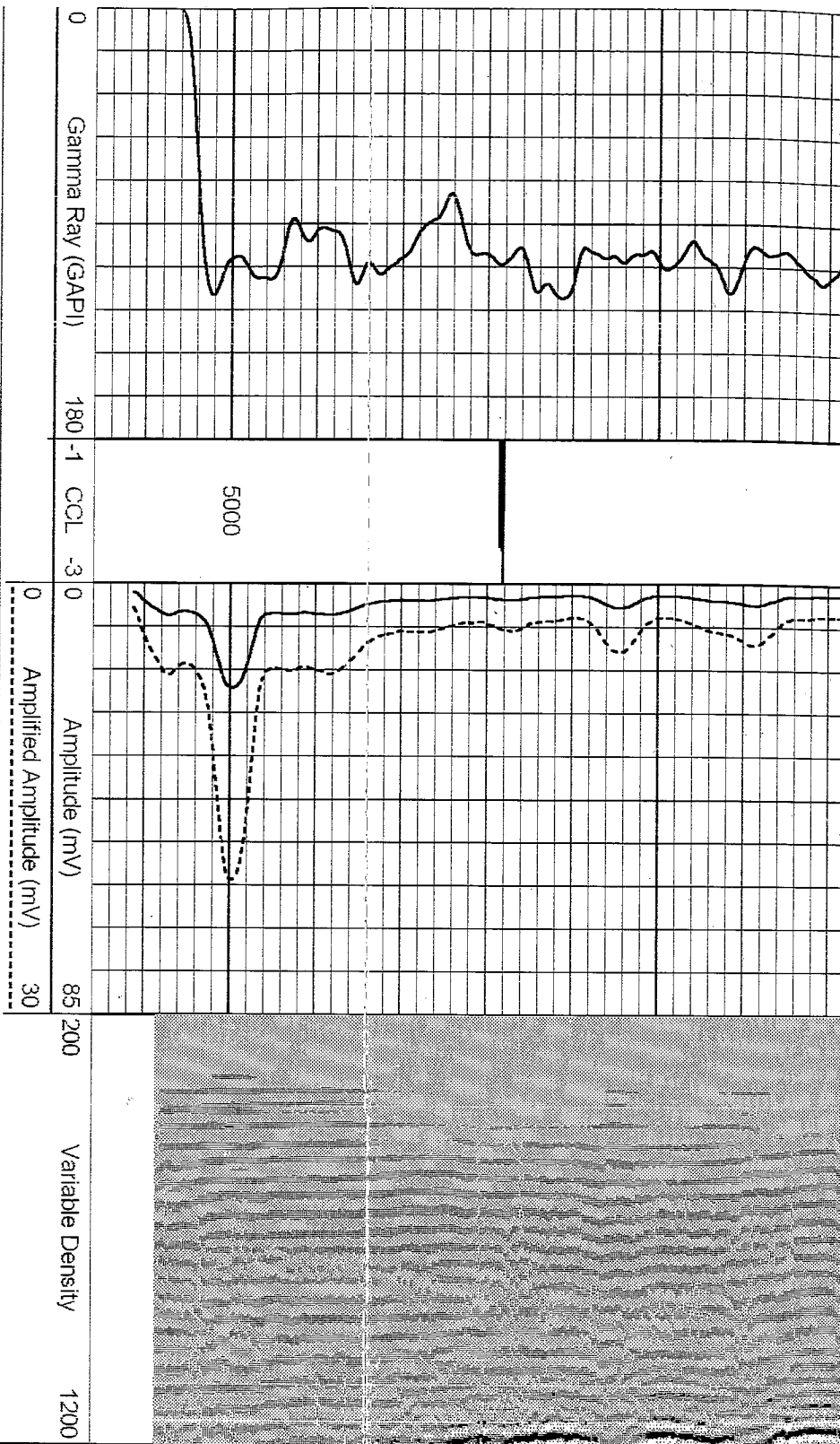




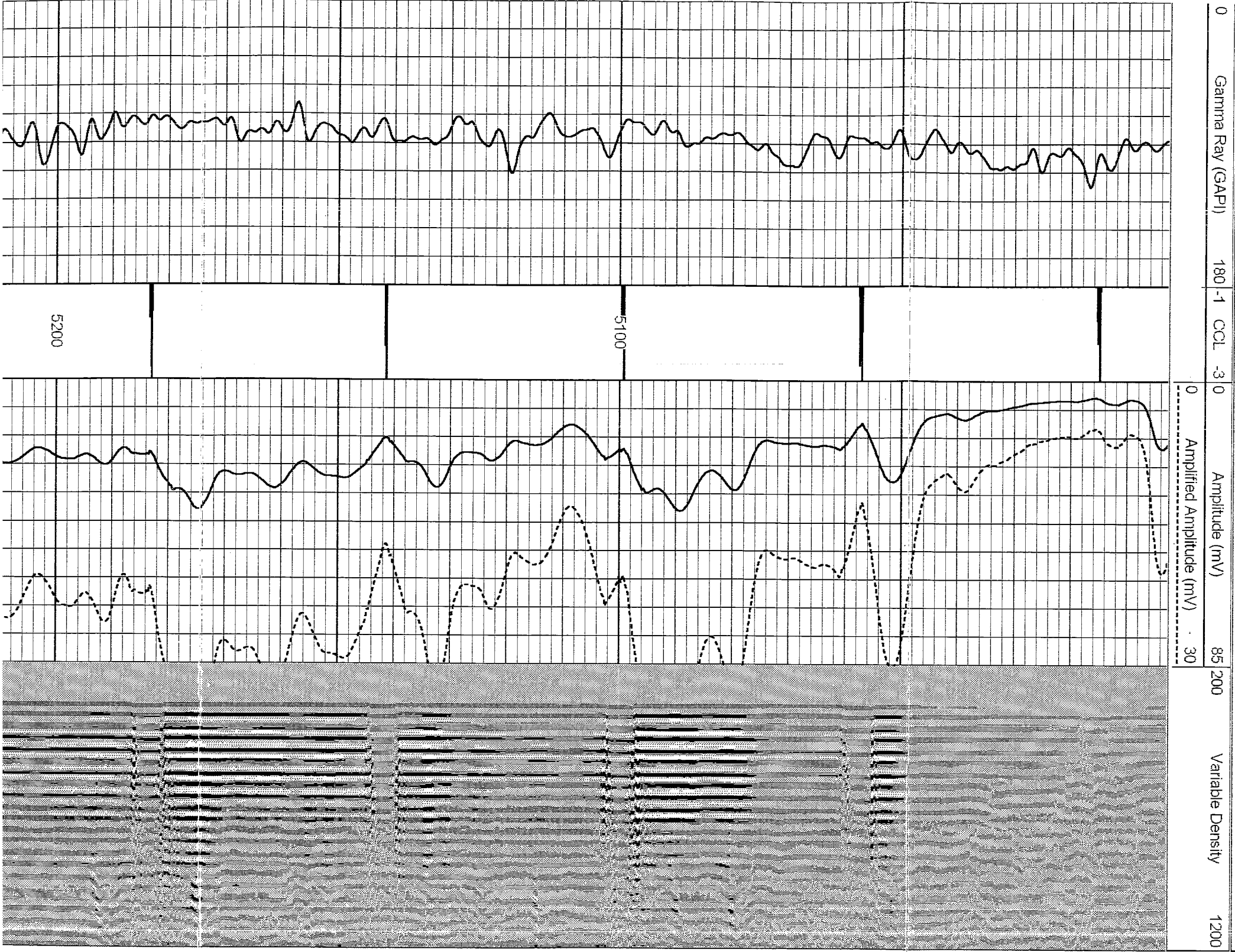


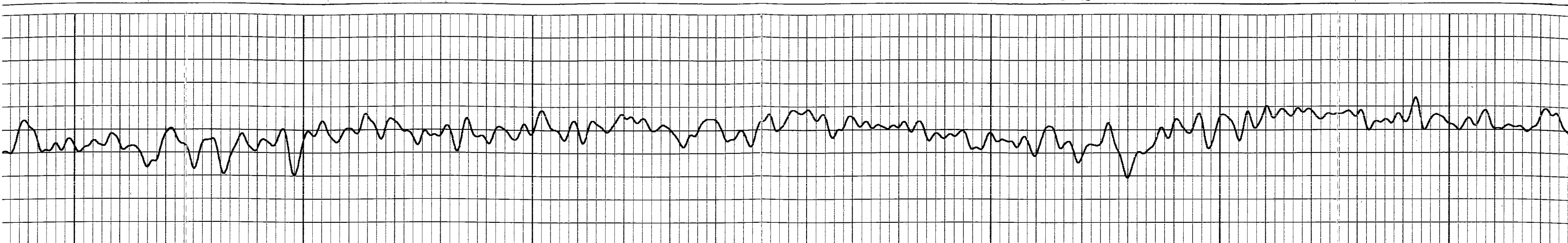




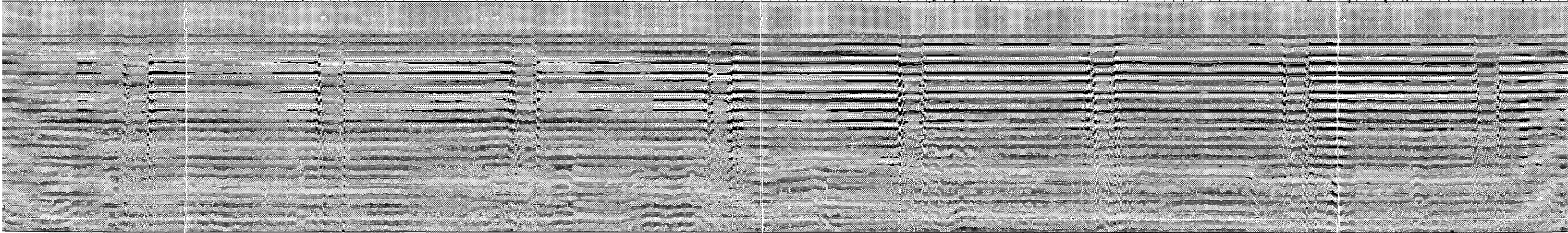
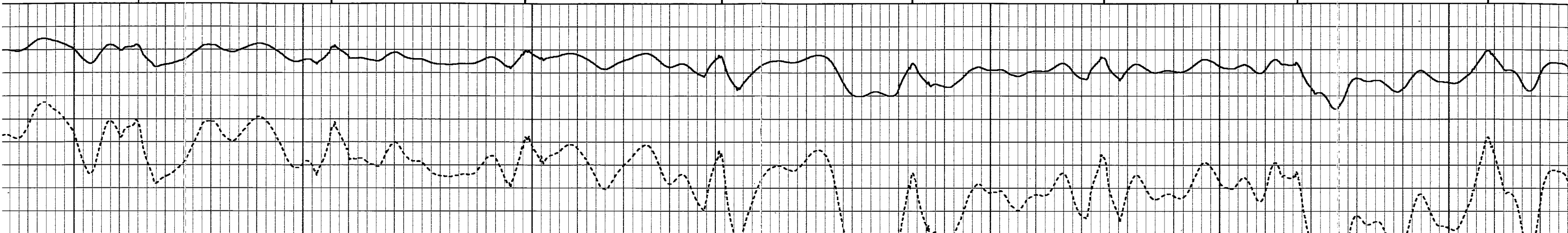


Database File: camenisch41-32.db  
Dataset Pathname: pass1  
Presentation Format: cbx  
Dataset Creation: Wed Mar 21 11:22:01 2007 by Log Warrior 7.0 STD Cas  
Charted by: Depth in Feet scaled 1:240

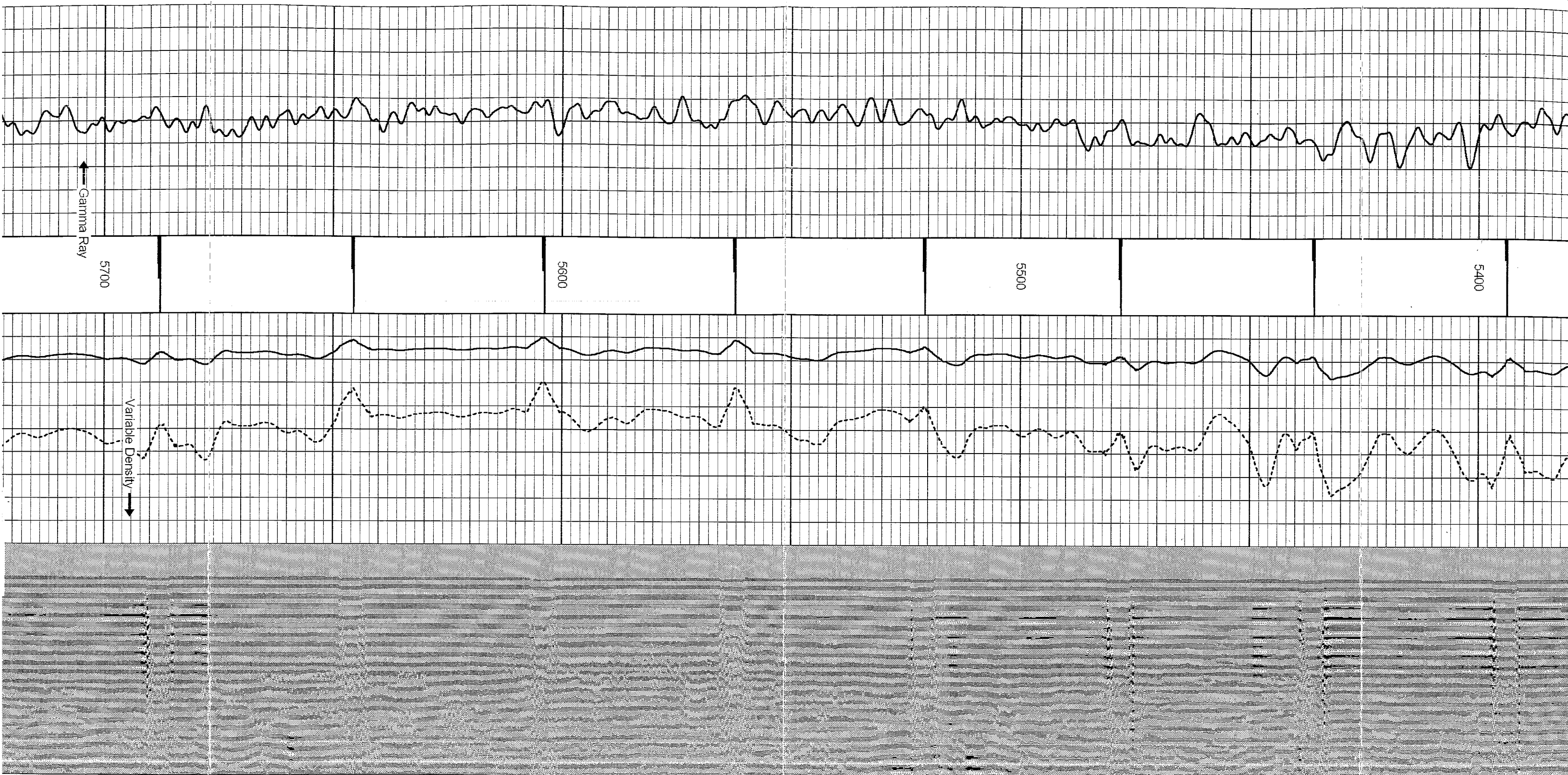




	5400		5300		5200	
--	------	--	------	--	------	--

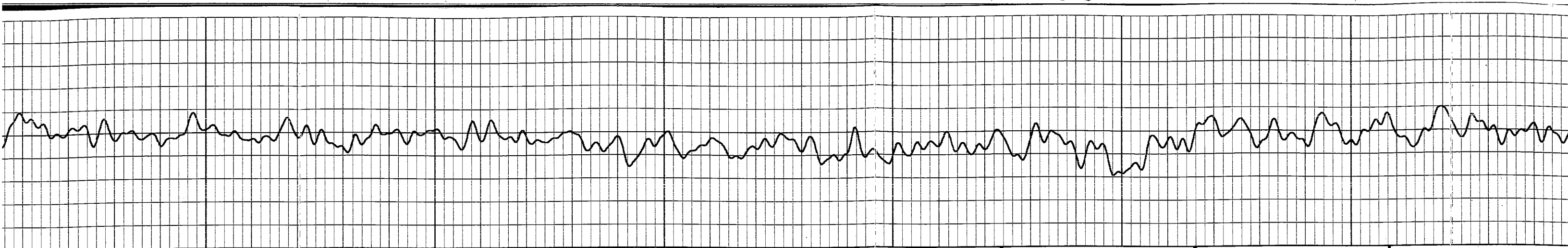




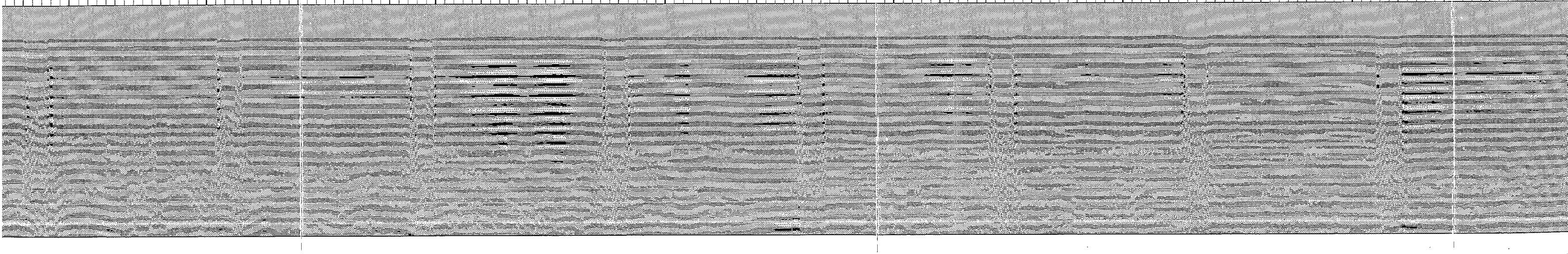
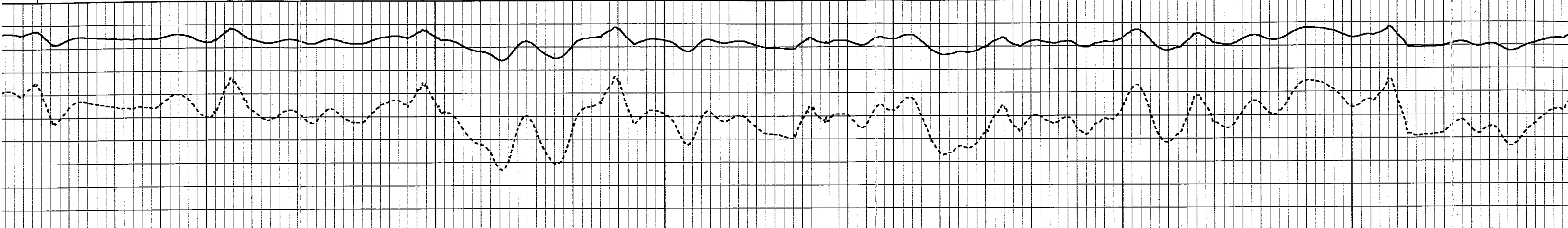


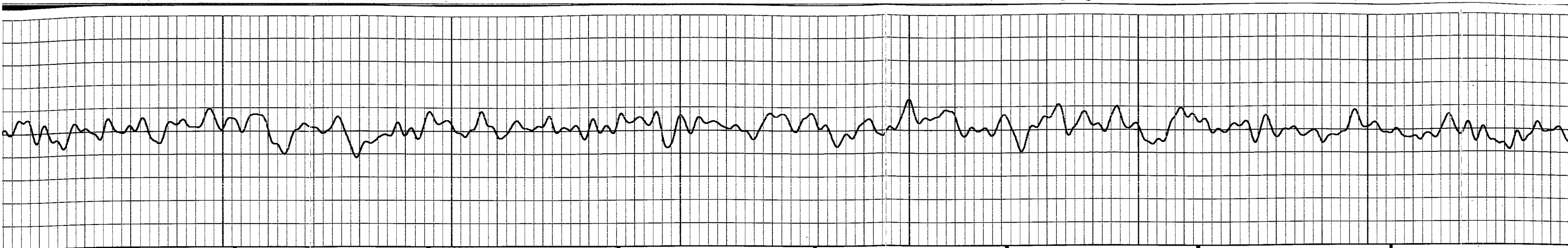






	6200		6100		6000		
--	------	--	------	--	------	--	--





6400

6300

6200

