



**SUPERIOR**  
Black Lick, Pa.  
Mercer, Pa.  
Wooster, Oh.  
Cleveland, Ok.  
Trinidad, Co.

## DUAL INDUCTION LOG

Company XTO Energy Inc.  
Well Golden Eagle 29-07  
Field Purgatoire River  
County Las Animas State Colorado

Location: API # : 05 071 09361 00

1878' FNL & 2367' FEL

SEC 29 TWP 33S RGE 67W

Permanent Datum Ground Level Elevation 7185'  
Log Measured From Ground Level  
Drilling Measured From Ground Level

Other Services  
CDL  
NEUTRON  
Elevation  
K.B. -----  
D.F. -----  
G.L. 7185'

Date	1-20-08		
Run Number	One		
Depth Driller	1910'		
Depth Logger	1914'		
Bottom Logged Interval	1912'		
Top Log Interval	Surface Casing		
Casing Driller	8 5/8" @ 451'		
Casing Logger	451'		
Bit Size	7 7/8"		
Type Fluid in Hole	Water		
Density / Viscosity	///		
pH / Fluid Loss	///		
Source of Sample	///		
Rm @ Meas. Temp	///		
Rmf @ Meas. Temp	///		
Rmc @ Meas. Temp	///		
Source of Rmf / Rmc	///		
Rm @ BHT	///		
Time Circulation Stopped	5:00 P.M.		
Time Logger on Bottom	7:20 P.M.		
Maximum Recorded Temperature	120 DEG F		
Equipment Number	T697		
Location	Trinidad		
Recorded By	J. Cappellucci		
Witnessed By	Mr. Don Johnson		

<<< Fold Here >>>

All interpretations are opinions based on inferences from electrical or other measurements and we cannot and do not guarantee the accuracy or correctness of any interpretation, and we shall not, except in the case of gross or willful negligence on our part, be liable or responsible for any loss, costs, damages, or expenses incurred or sustained by anyone resulting from any interpretation made by any of our officers, agents or employees. These interpretations are also subject to our general terms and conditions set out in our current Price Schedule.

### Comments

#### Well Directions:

Hwy 12 , second entrance to Bosque, across tracks, first left to location.



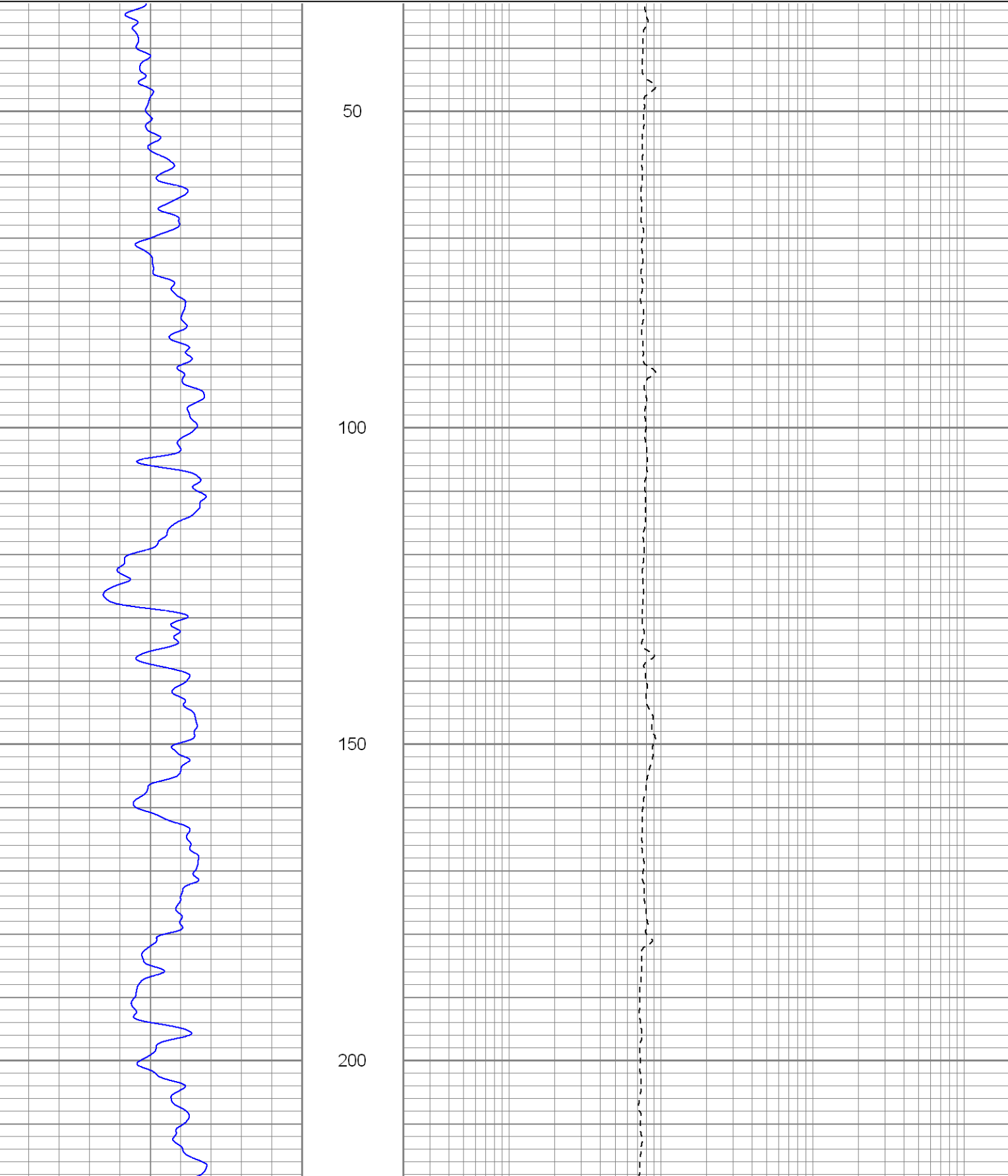
**SUPERIOR**

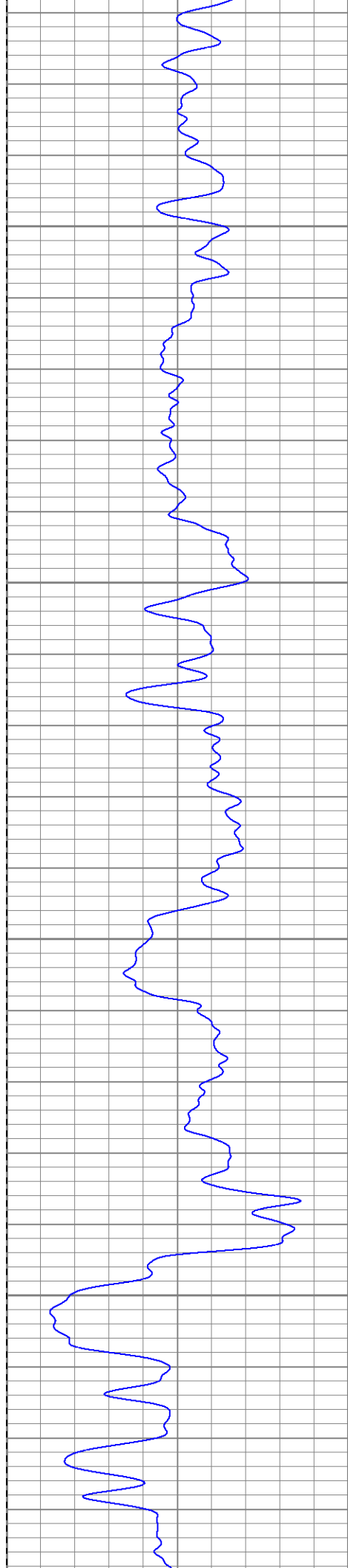
Black Lick, Pa.  
Mercer, Pa.  
Wooster, Oh.  
Cleveland, Ok.  
Trinidad, Co.

# Main Pass

Database File: xtoge2907.db  
Dataset Pathname: pass2.1  
Presentation Format: dil  
Dataset Creation: Sun Jan 20 21:03:30 2008 by Calc Open-Cased 070814  
Charted by: Depth in Feet scaled 1:240

0	GR (GAPI)	200	0.2	RILM (Ohm-m)	2000
-200	SP (mV)	0	0.2	RILD (Ohm-m)	2000
			0.2	RLL3 (Ohm-m)	2000



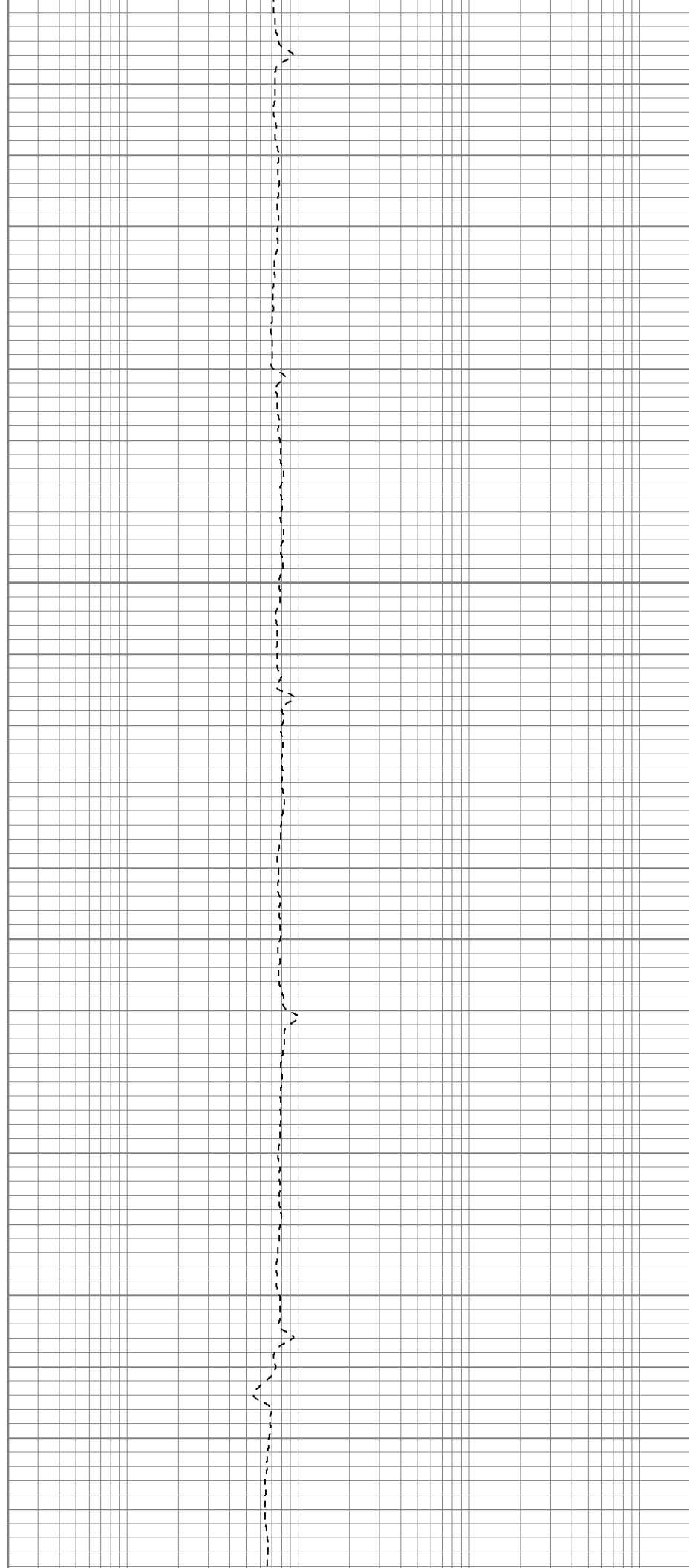


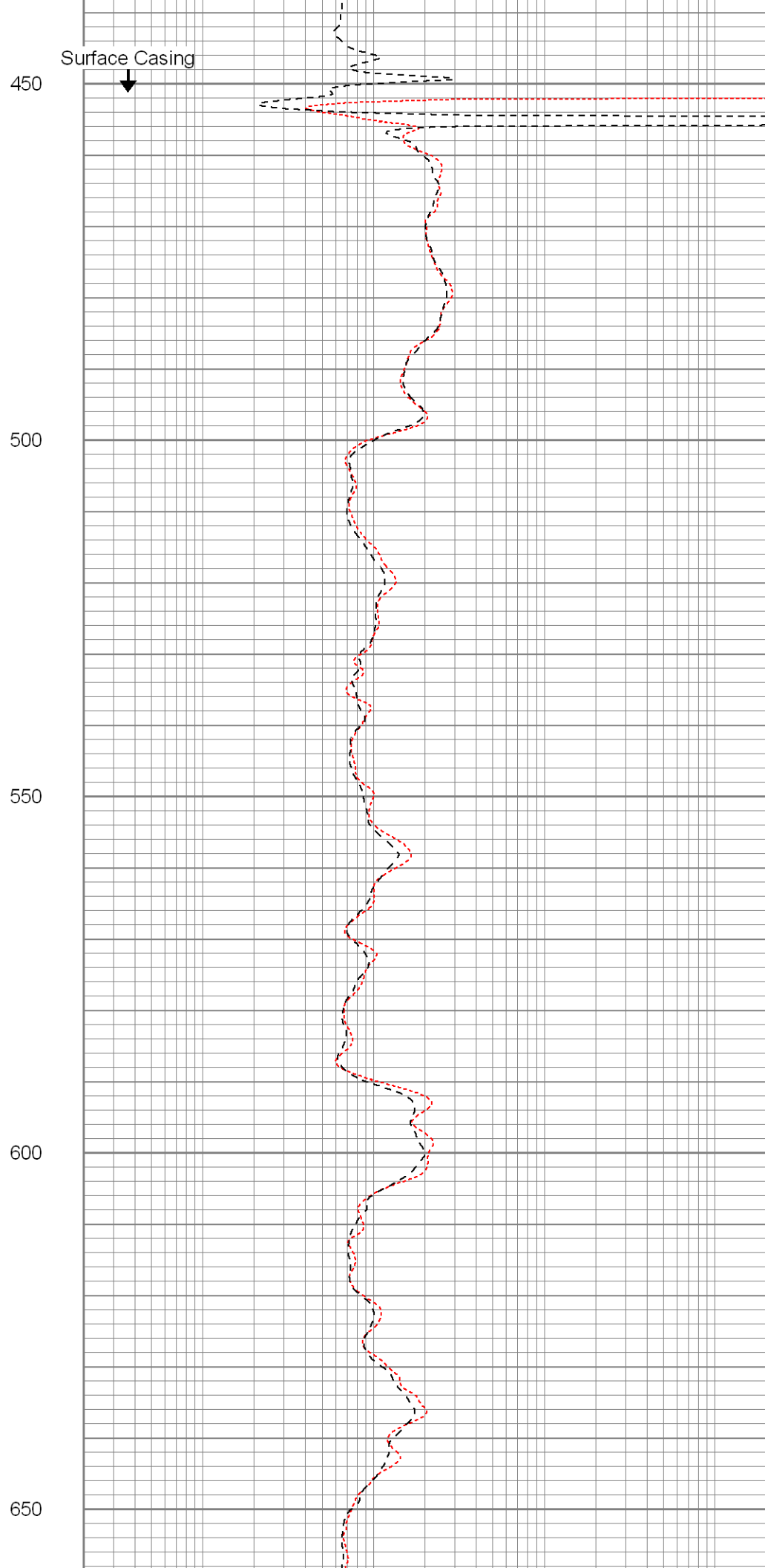
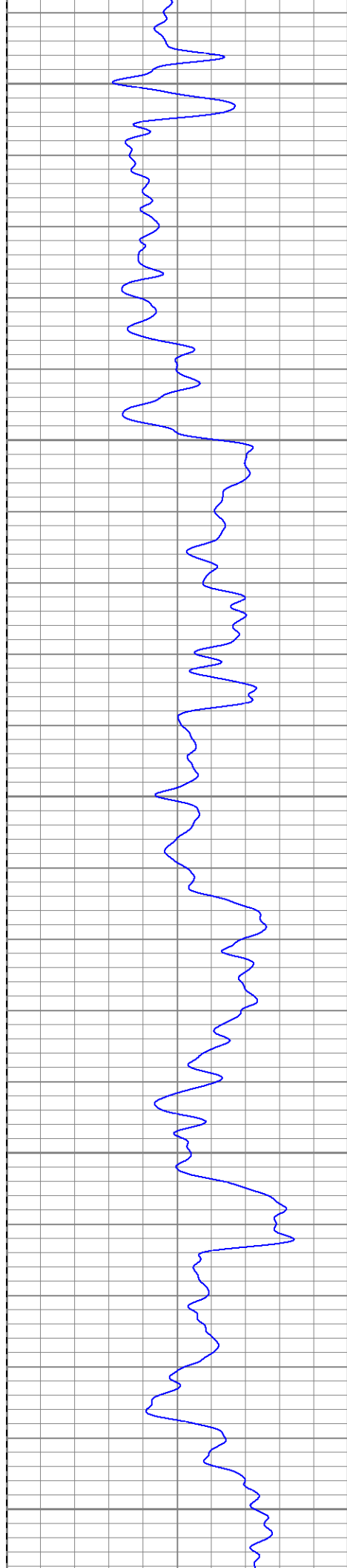
250

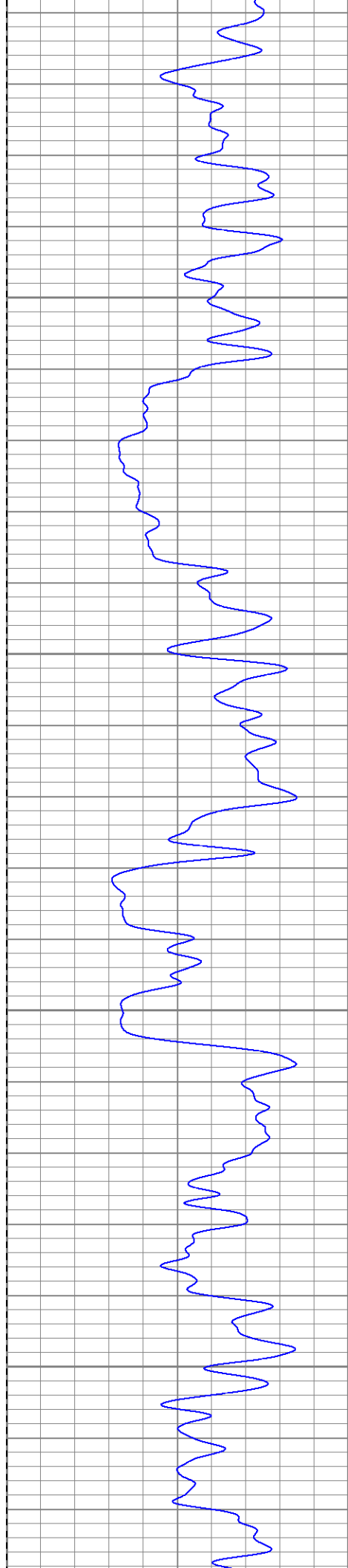
300

350

400





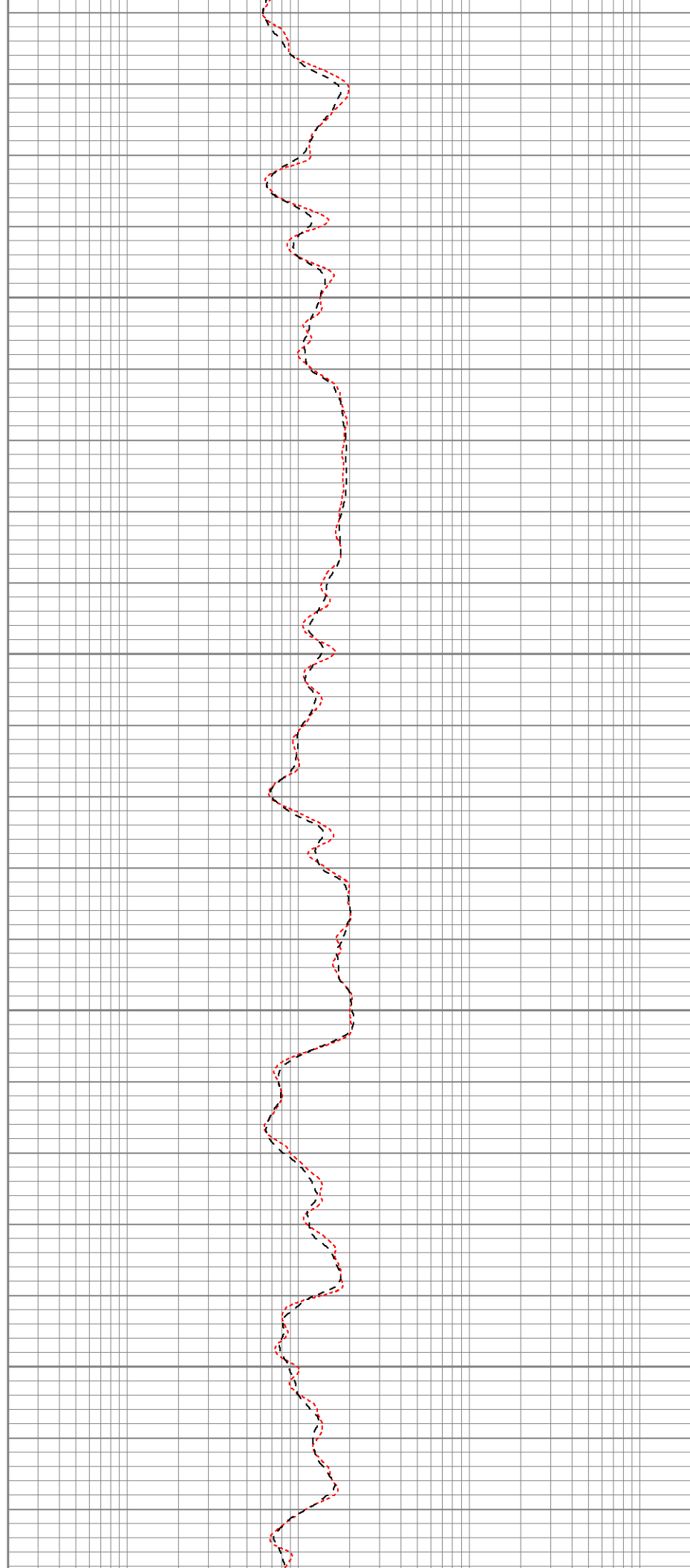


700

750

800

850





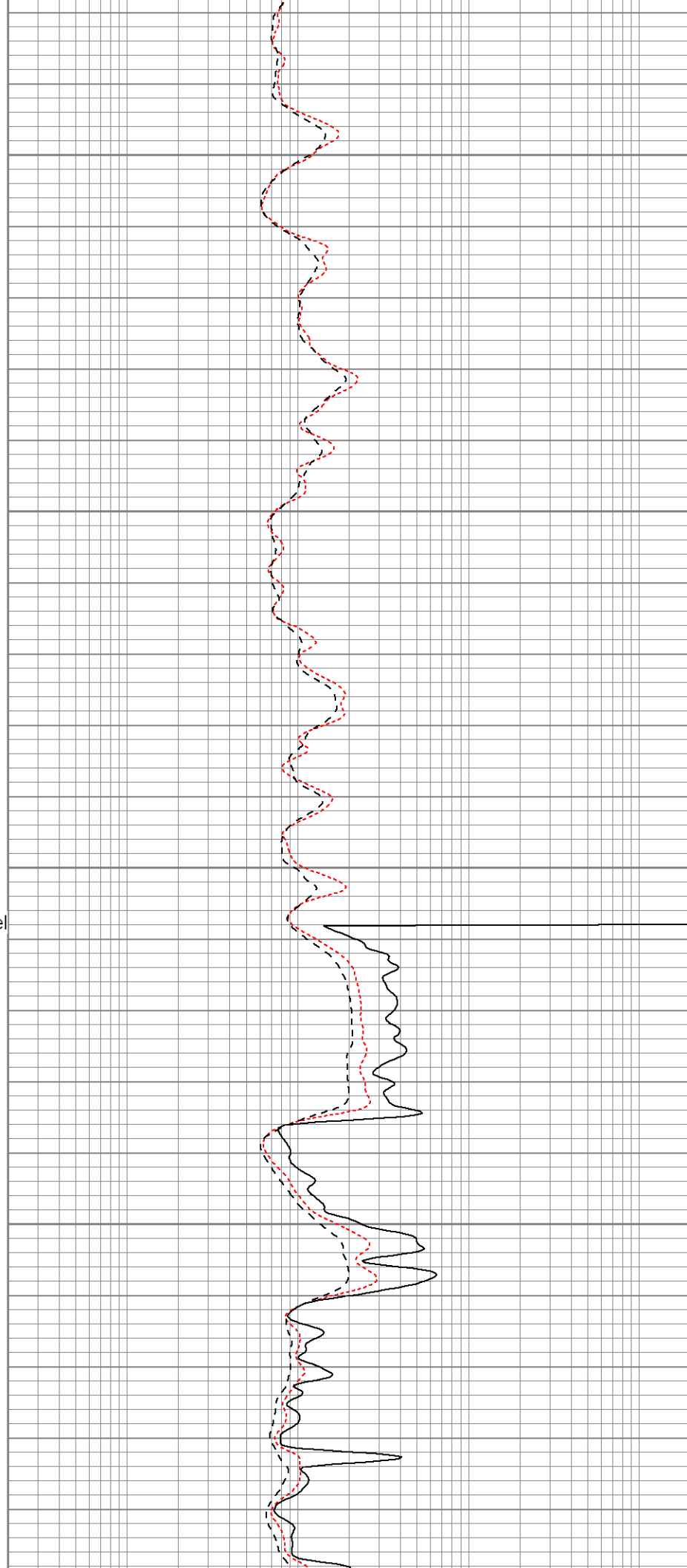
900

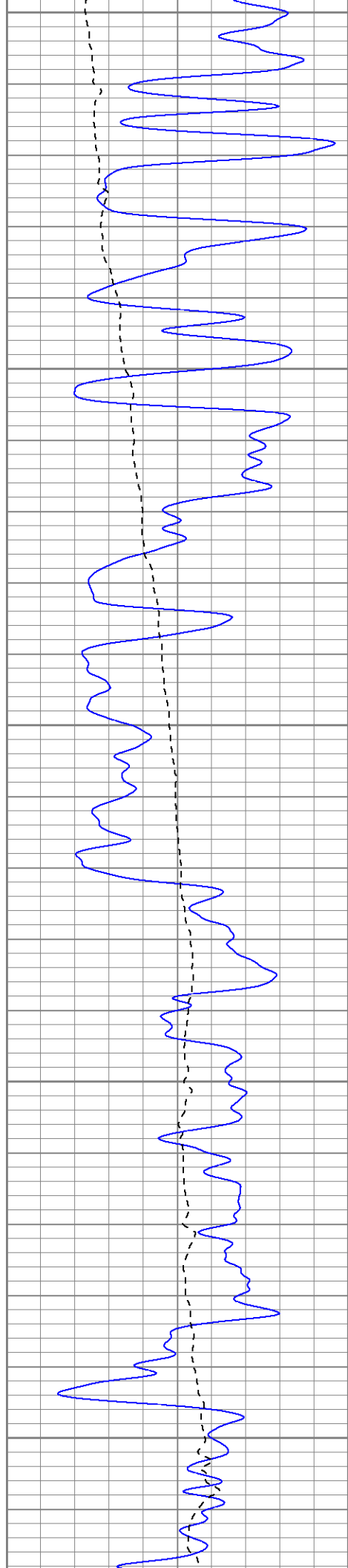
950

1000

Fluid Level

1050





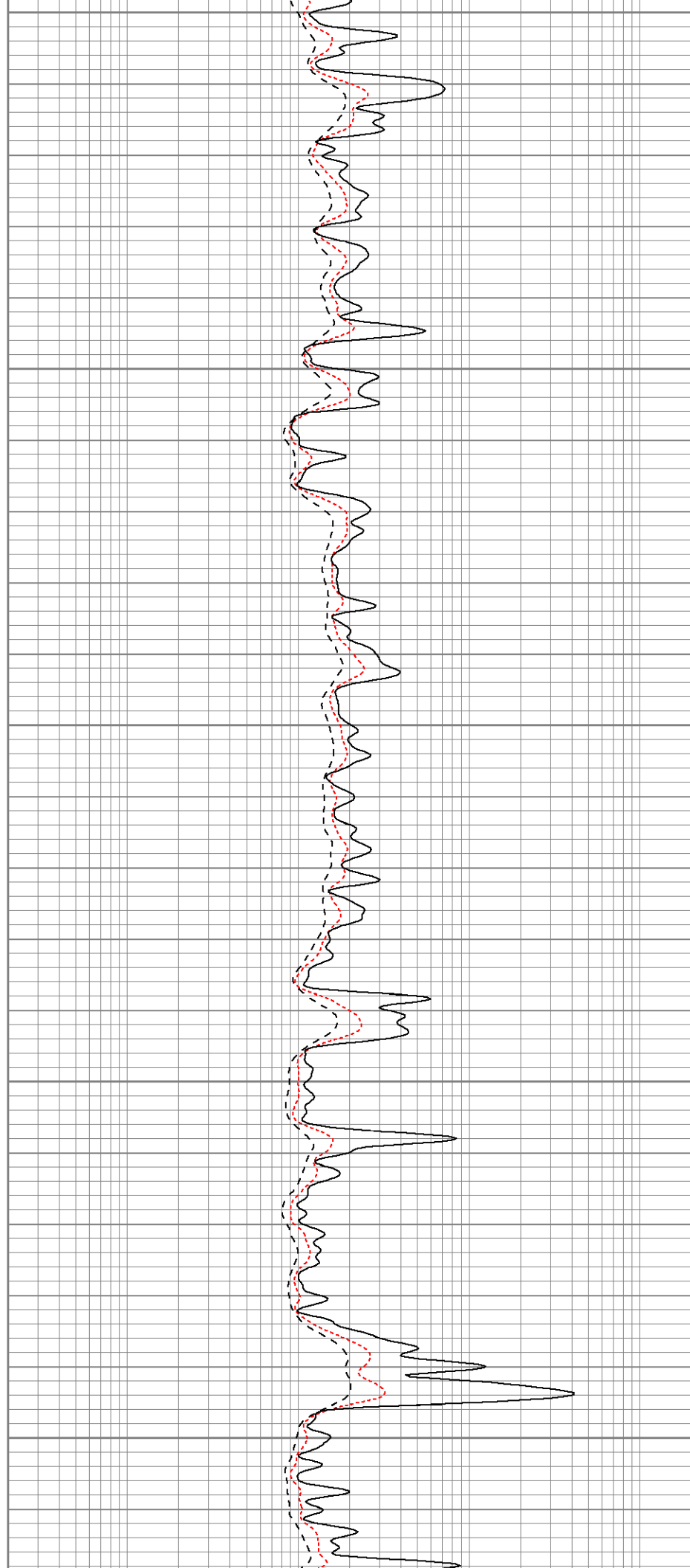
1100

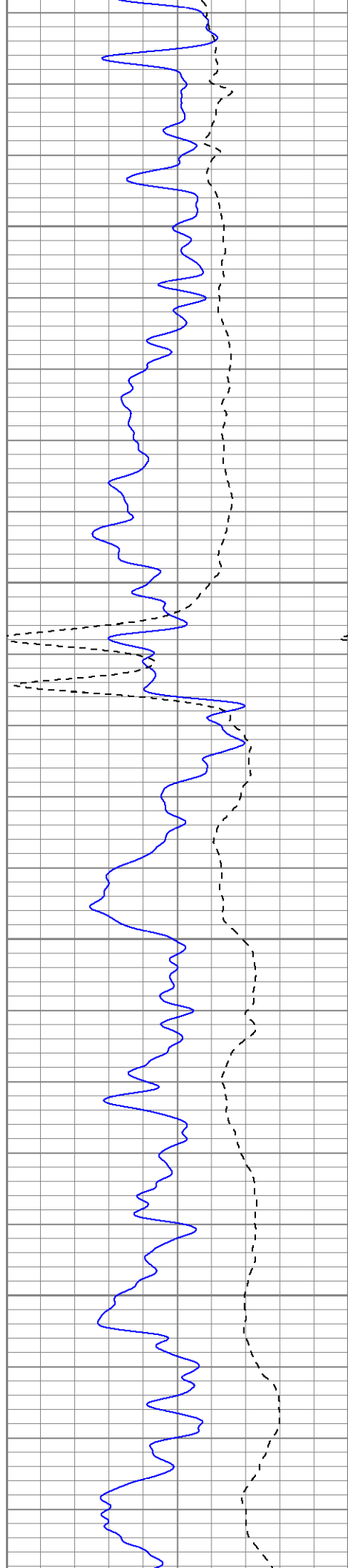
1150

1200

1250

1300



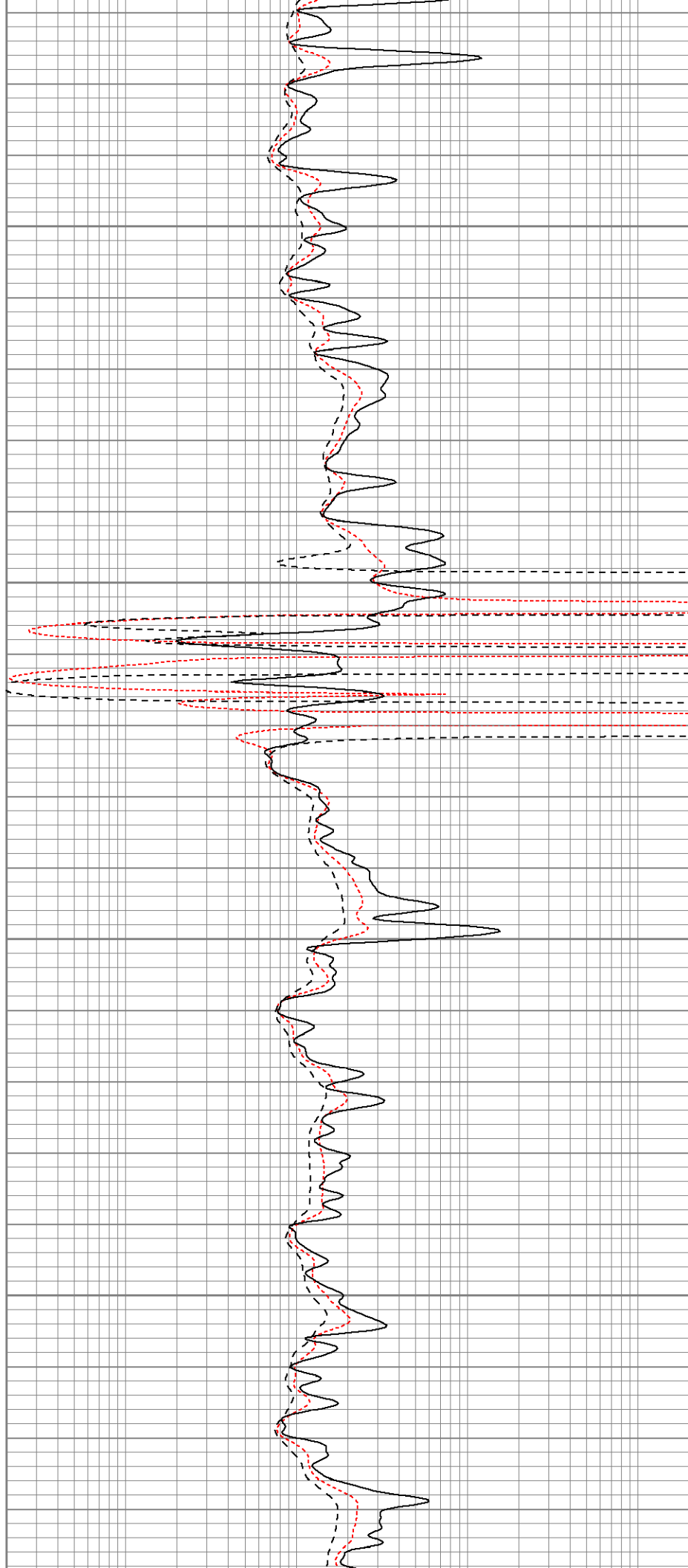


1350

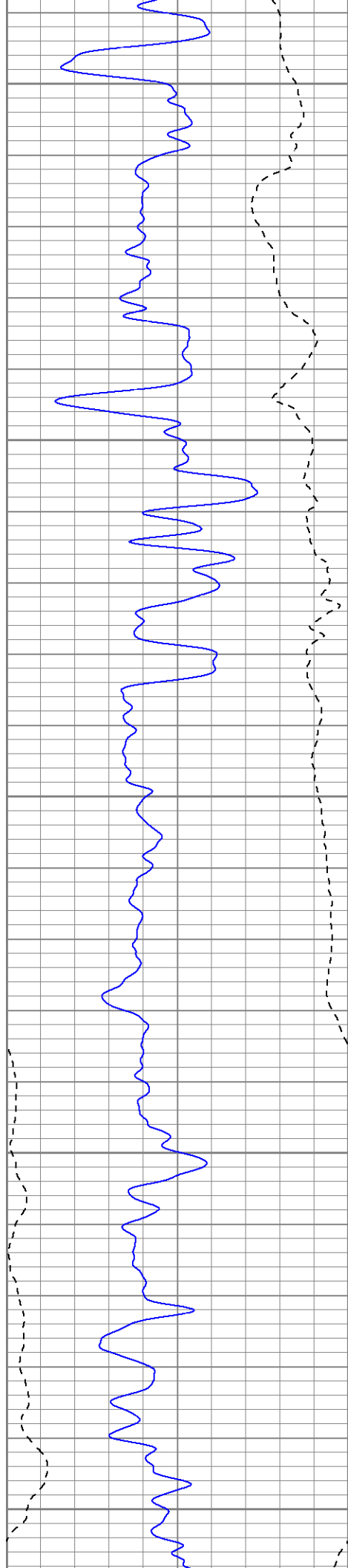
1400

1450

1500







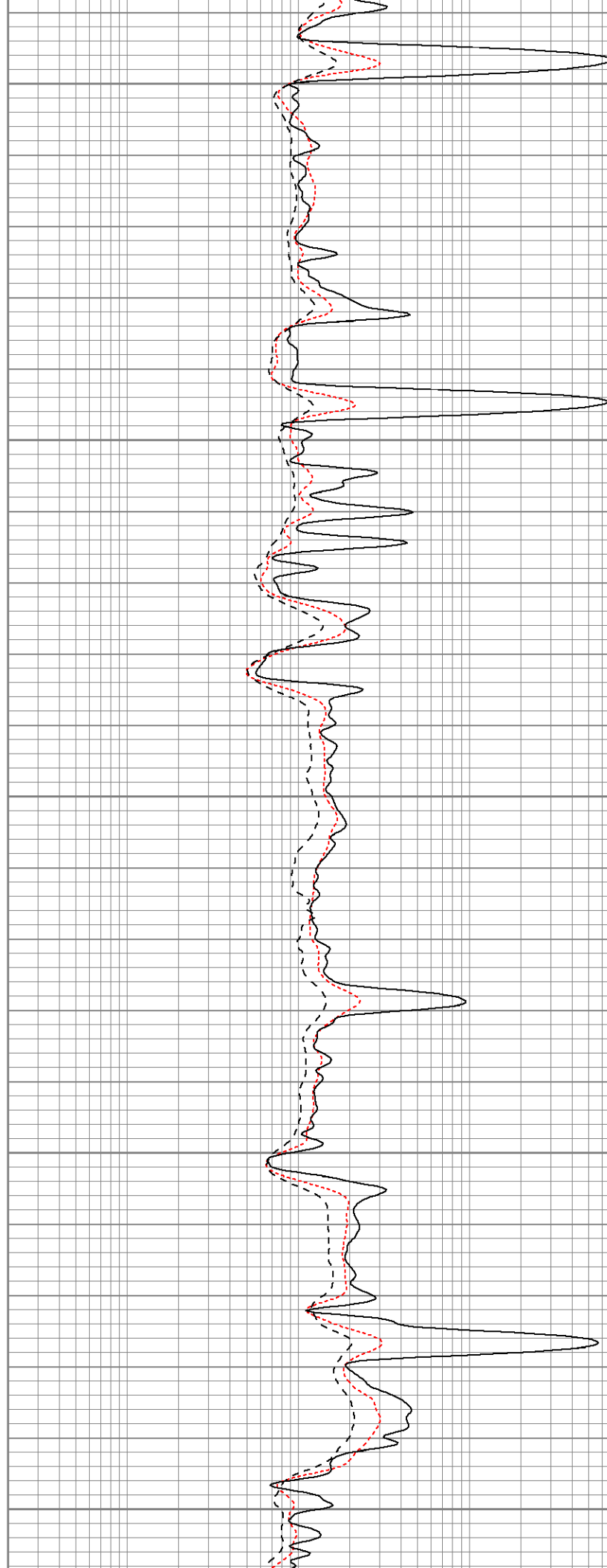
1550

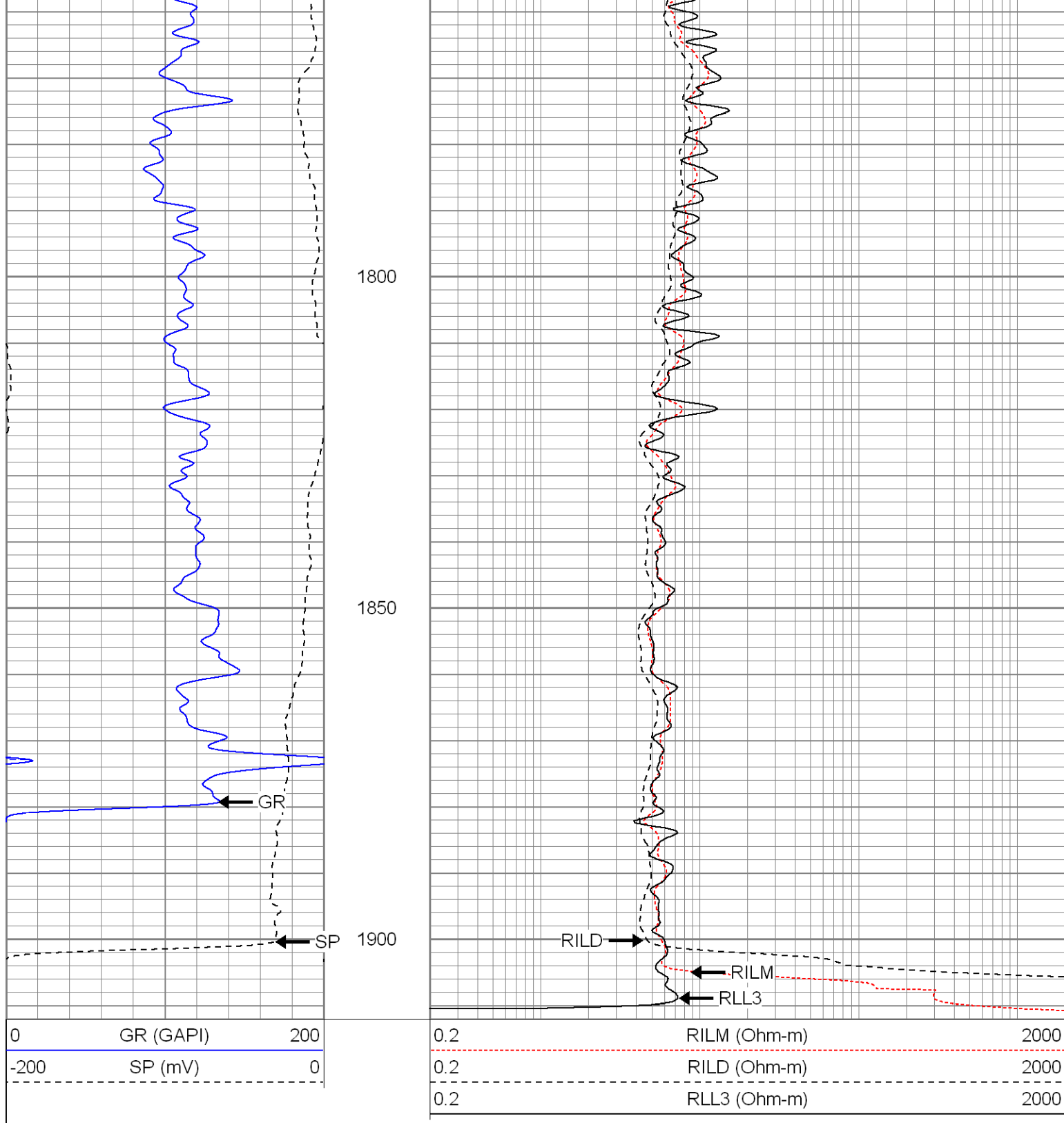
1600

1650

1700

1750





**SUPERIOR**

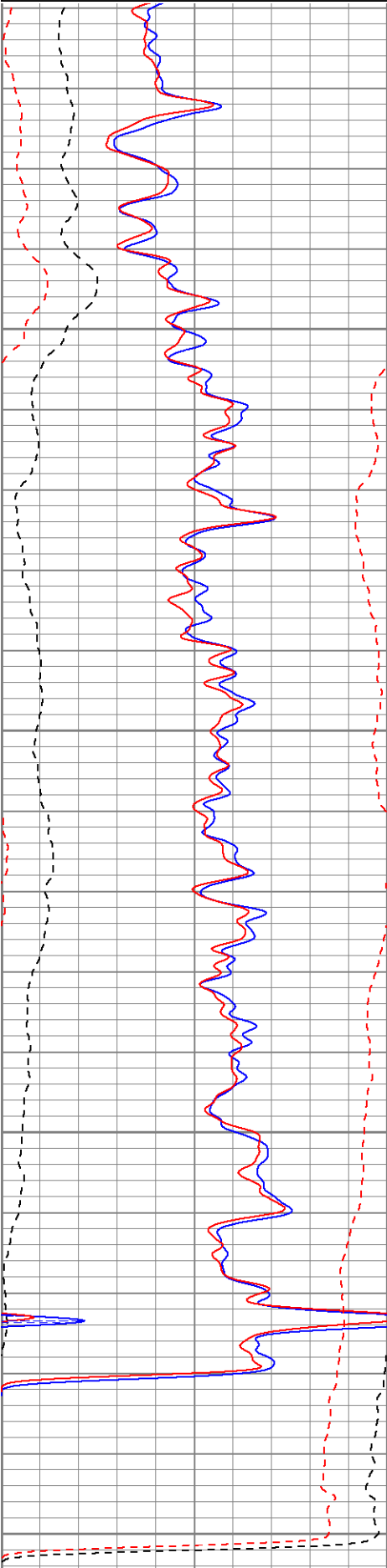
Black Lick, Pa.  
Mercer, Pa.  
Wooster, Oh.  
Cleveland, Ok.  
Trinidad, Co.

# Repeat Pass

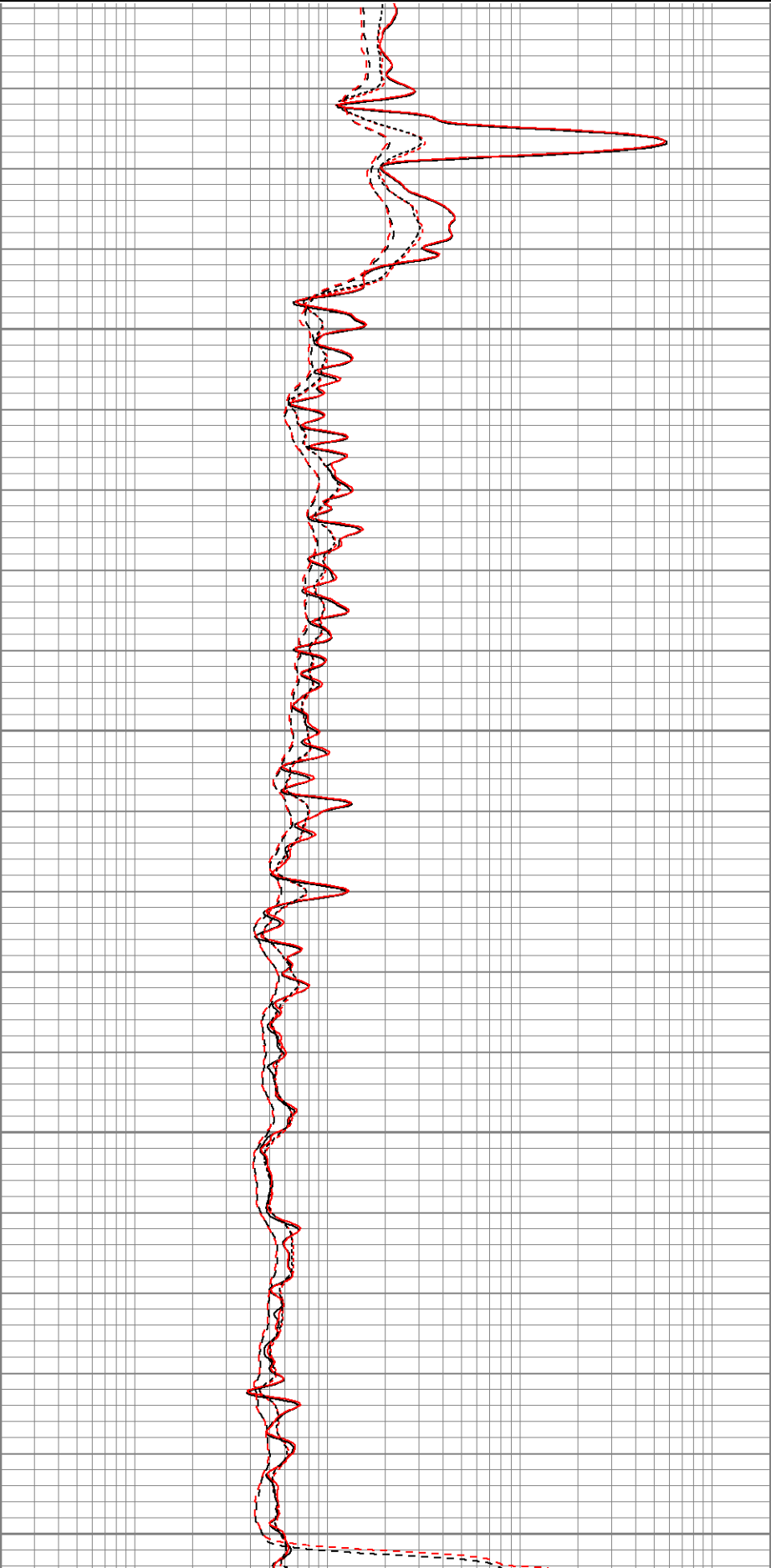
Database File: xtoge2907.db  
Dataset Pathname: pass1.1  
Presentation Format: dil  
Dataset Creation: Sun Jan 20 20:23:05 2008 by Calc Open-Cased 070814  
Charted by: Depth in Feet scaled 1:240



-200	SP (mV)	0
0	GR-repeat (GAPI)	200
-200	SP-repeat (mV)	0



0.2	RILD (Ohm-m)	2000
0.2	RLL3 (Ohm-m)	2000
0.2	RLL3-repeat (Ohm-m)	2000
0.2	RILM-repeat (Ohm-m)	2000
0.2	RILD-repeat (Ohm-m)	2000



0	GR (GAPI)	200	0.2	RILM (Ohm-m)	2000
-200	SP (mV)	0	0.2	RILD (Ohm-m)	2000
0	GR-repeat (GAPI)	200	0.2	RLL3 (Ohm-m)	2000
-200	SP-repeat (mV)	0	0.2	RLL3-repeat (Ohm-m)	2000
			0.2	RILM-repeat (Ohm-m)	2000
			0.2	RILD-repeat (Ohm-m)	2000

Calibration Report	
Database File:	xtoge2907.db
Dataset Pathname:	pass1
Dataset Creation:	Sun Jan 20 19:19:36 2008 by Log Open-Cased 070814

Dual Induction Calibration Report	
Serial-Model:	5375-G
Surface Cal Performed:	Thu Jan 10 17:04:29 2008
Downhole Cal Performed:	Thu Jan 10 17:05:58 2008

Surface Calibration								
Loop:	Readings			References			Results	
	Air	Loop		Air	Loop		m	b
Deep	0.001	0.621	V	0.000	500.000	mmho-m	807.348	-1.148
Medium	0.005	0.745	V	0.000	550.000	mmho-m	743.100	-3.588
Internal:	Zero	Cal		Zero	Cal		m	b
Deep	0.001	0.621	V	0.000	500.000	mmho-m	806.966	-1.153
Medium	0.005	0.745	V	0.000	550.000	mmho-m	742.904	-3.460

Downhole Calibration								
Internal:	Readings			References			Results	
	Zero	Cal		Zero	Cal		m	b
Deep	0.177	500.330	mmho-m	0.005	500.241	mmho-m	1.000	-0.172
Medium	-0.163	549.964	mmho-m	-0.127	550.018	mmho-m	1.000	0.036
Shallow	2.506	0.009	V	500.000	2.000	Ohm-m	125.000	-3.000

Compensated Density Calibration Report	
Serial-Model:	2118-poilex
Source / Verifier:	/
Master Calibration Performed:	Tue Jan 08 02:47:05 2008

Master Calibration					
	Density		Far Detector	Near Detector	
Magnesium	1.710	g/cc	718.08	683.29	cps
Aluminum	2.590	g/cc	158.70	455.82	cps
Spine Angle = 74.99			Density/Spine Ratio = 0.563		
	Size		Reading		
Small Ring	8.90	in	4.48	V	
Large Ring	11.83	in	2.62	V	

Gamma Ray Calibration Report

Serial Number:2001

Tool Model:OH

Performed:Tue Jan 08 10:28:42 2008

Calibrator Value:1.0GAPI

Background Reading:0.0cps

Calibrator Reading:1.0cps

Sensitivity:0.2500GAPI/cps

Neutron Calibration Report

Serial Number:5145






Tool Model:G

Performed:Thu Jan 10 08:01:02 2008

Calibrator Value:1200NAPI

Calibrator Reading:1700cps

Sensitivity:1NAPI/cps

Sensor	Offset (ft)	Schematic	Description	Len (ft)	OD (in)	Wt (lb)
NEU	37.19		None	0.75	1.50	5.00
			NEU-G (5145) Gearhart Epithermal	5.75	3.50	85.00
GR	31.62		GR-OH (2001) SIE	3.50	3.25	40.00
LSD	23.45		CDL-poilex (2118)	8.79	4.00	275.00
DCAL	23.04					
SSD	22.91					
CILD SP	10.60 10.60		DIL-G (5375) Gearhart	20.83	4.00	345.00
CILM	6.89					
RLL3	1.70	