



SUPERIOR
Black Lick, Pa.
Mercer, Pa.
Wooster, Oh.
Cleveland, Ok.
Trinidad, Co.

SINGLE INDUCTION LOG

Company Pioneer Natural Resources
Well Patti C 31-33
Field Purgatoire River
County Las Animas State Colorado

Location: API # : 071 08950 00

594' FNL & 2079' FEL

SEC 33 TWP 32S RGE 67W

Other Services
CDL

Permanent Datum Ground Level Elevation 7582'
Log Measured From Kelly Bushing 4' Above G.L.
Drilling Measured From Kelly Bushing

Elevation
K.B. 7586'
D.F. -----
G.L. 7582'

Date	4-19-07	4-21-07	
Run Number	One	Thirty Four	
Depth Driller	2565'	2565'	
Depth Logger	956'	2560'	
Bottom Logged Interval	954'	2568'	
Top Log Interval	Surface Casing	Casing	
Casing Driller	8,625" @ 605'	2398'	
Casing Logger	608'	2402'	
Bit Size	7.875"	7.875"	
Type Fluid in Hole	Water	Water	
Density / Viscosity	///	///	
pH / Fluid Loss	///	///	
Source of Sample	///	///	
Rm @ Meas. Temp	///	///	
Rmf @ Meas. Temp	///	///	
Rmc @ Meas. Temp	///	///	
Source of Rmf / Rmc	///	///	
Rm @ BHT	///	///	
Time Circulation Stopped	///	///	
Time Logger on Bottom	3:30 P.M.	3:45 P.M.	
Maximum Recorded Temperature	///	///	
Equipment Number	T701	T701	
Location	Trinidad	Trinidad	
Recorded By	Jennifer Allen	Jennifer Allen	
Witnessed By	Mr. Ray Decker	Mr. Clayton Brooker	

>>> Fold Here >>>

All interpretations are opinions based on inferences from electrical or other measurements and we cannot and do not guarantee the accuracy or correctness of any interpretation, and we shall not, except in the case of gross or willful negligence on our part, be liable or responsible for any loss, costs, damages, or expenses incurred or sustained by anyone resulting from any interpretation made by any of our officers, agents or employees. These interpretations are also subject to our general terms and conditions set out in our current Price Schedule.

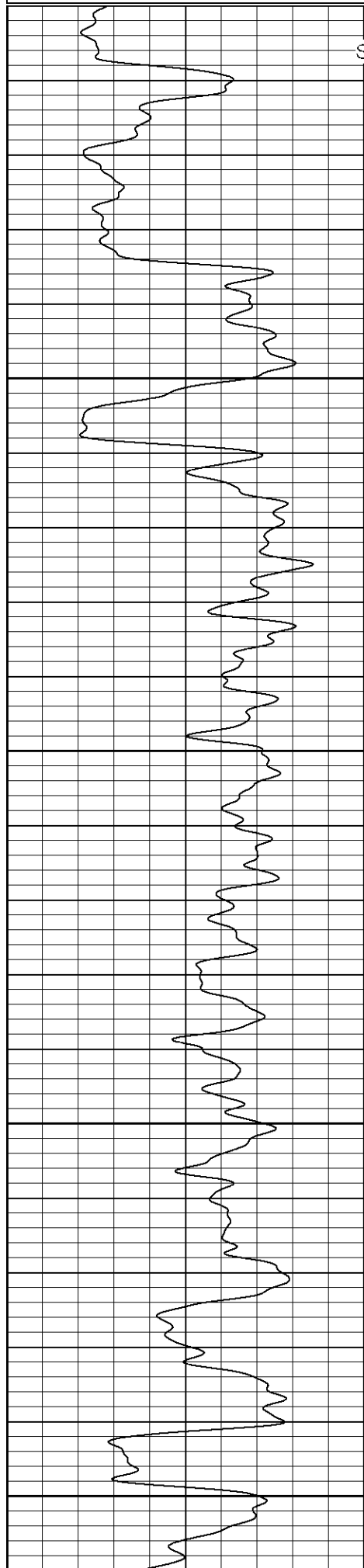
Comments

Well Directions:
Wet Canyon, stay on main road, turn left at two story cabin,
first right to location

Database File: pattic.db
Dataset Pathname: pass1.2
Presentation Format: iel
Dataset Creation: Thu Apr 19 02:09:48 2007 by Calc Open-Cased 061129
Charted by: Depth in Feet scaled 1:240

0 GR (GAPI) 200

0.2 SN (Ohm-m) 2000



Surface Casing

600

650

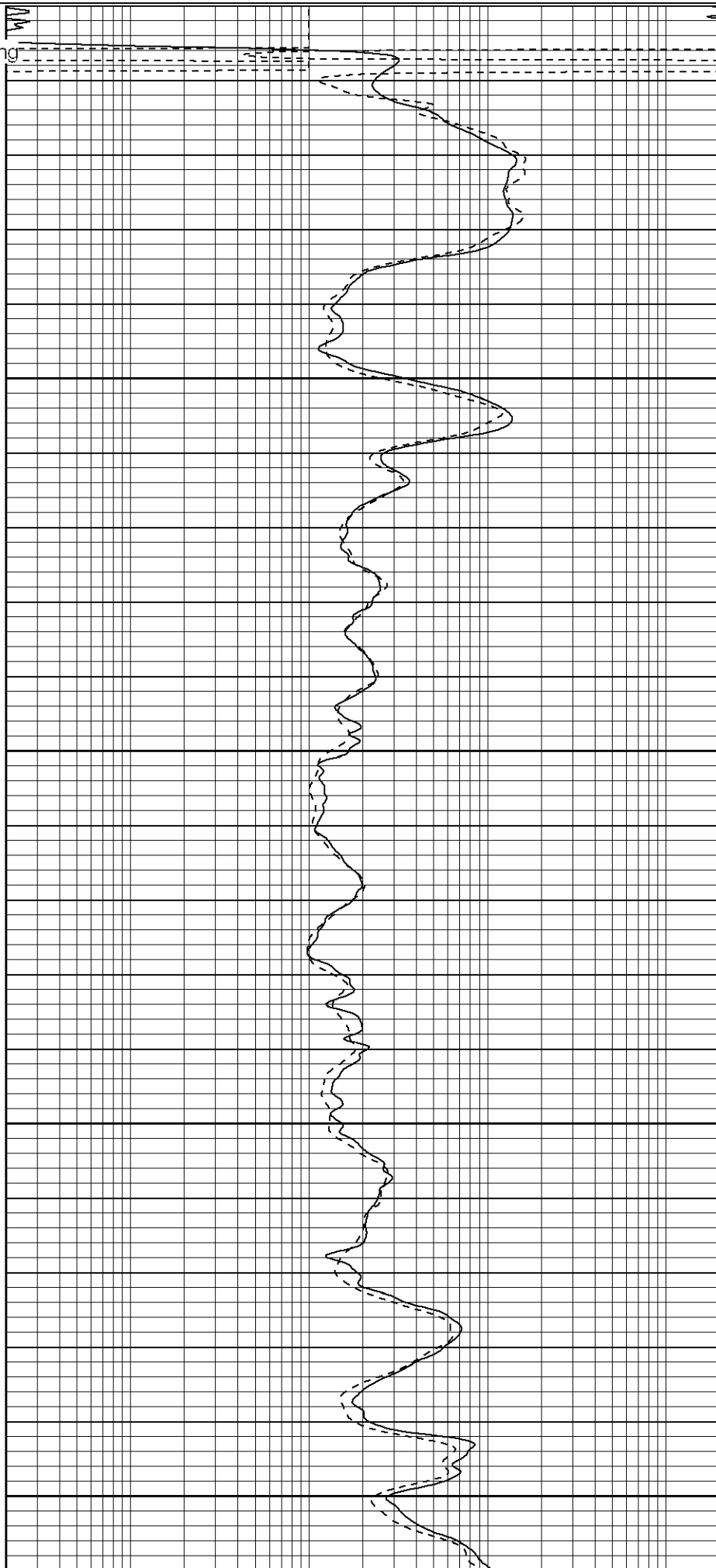
700

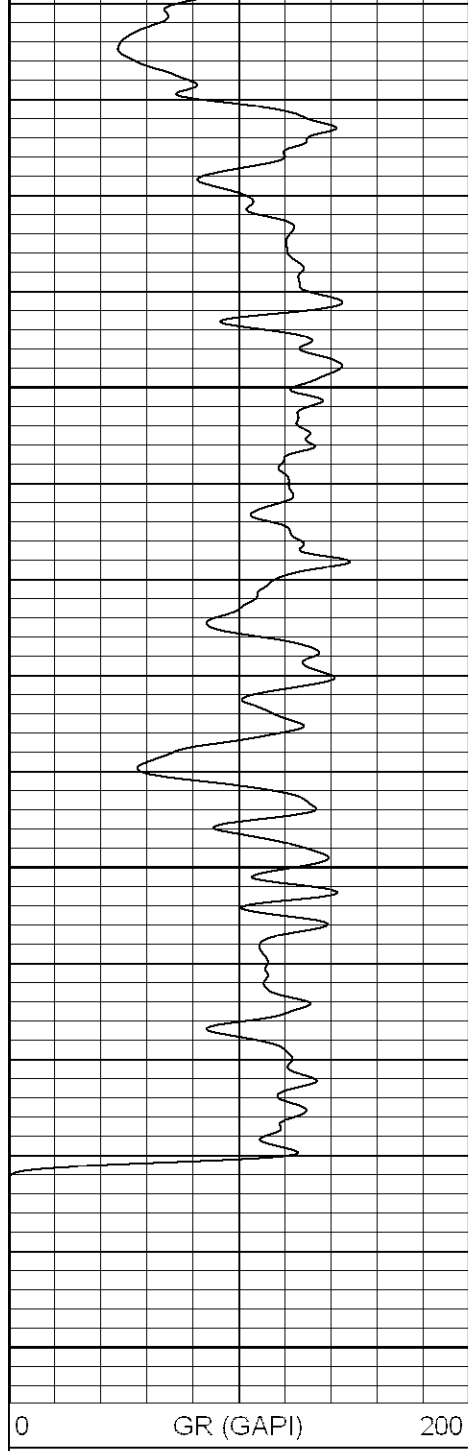
750

800

DIR (Ohm-m)

0.2 SN (Ohm-m) 2000



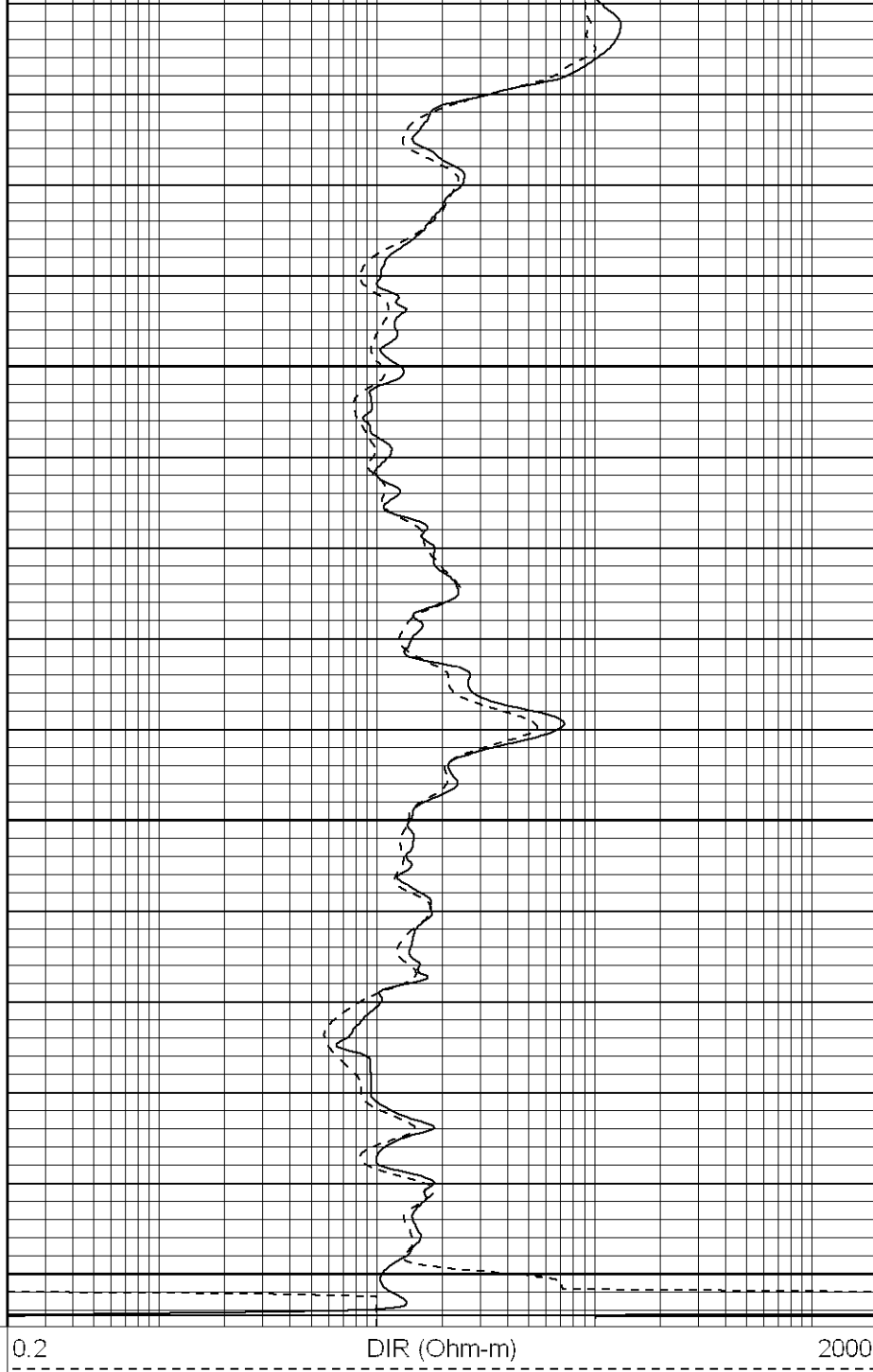


850

900

950

0 GR (GAPI) 200



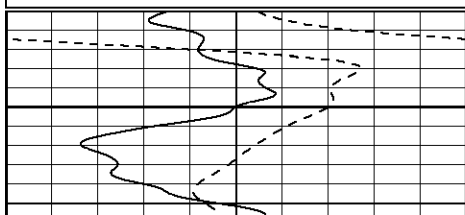
0.2 DIR (Ohm-m) 2000

0.2 SN (Ohm-m) 2000

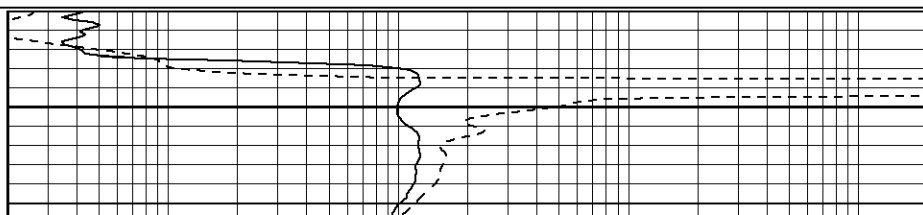
Database File: pattic.db
 Dataset Pathname: pass2
 Presentation Format: iel
 Dataset Creation: Fri Apr 20 04:35:49 2007 by Calc Open-Cased 061129
 Charted by: Depth in Feet scaled 1:240

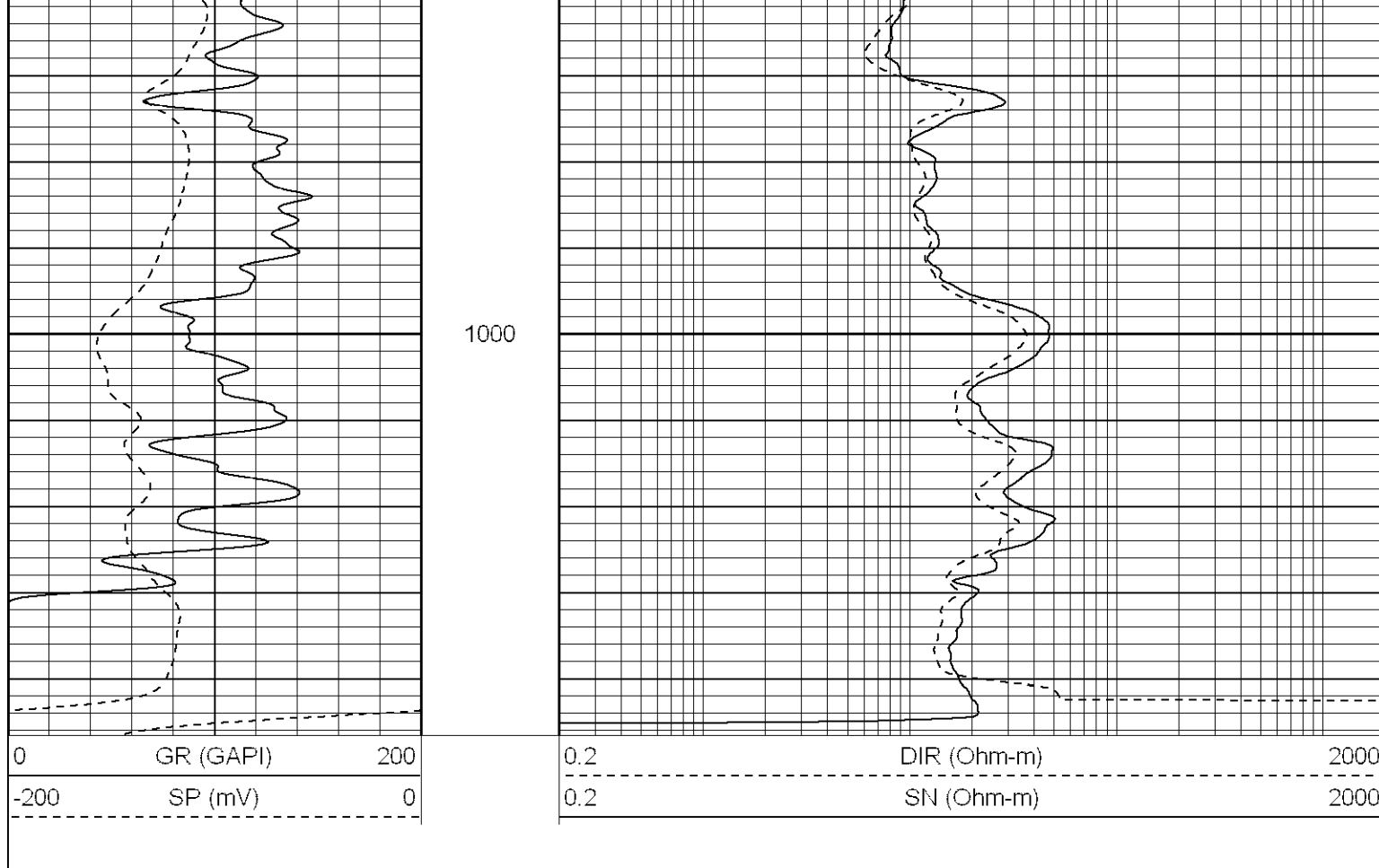
0 GR (GAPI) 200
 -200 SP (mV) 0

0.2 DIR (Ohm-m) 2000
 0.2 SN (Ohm-m) 2000

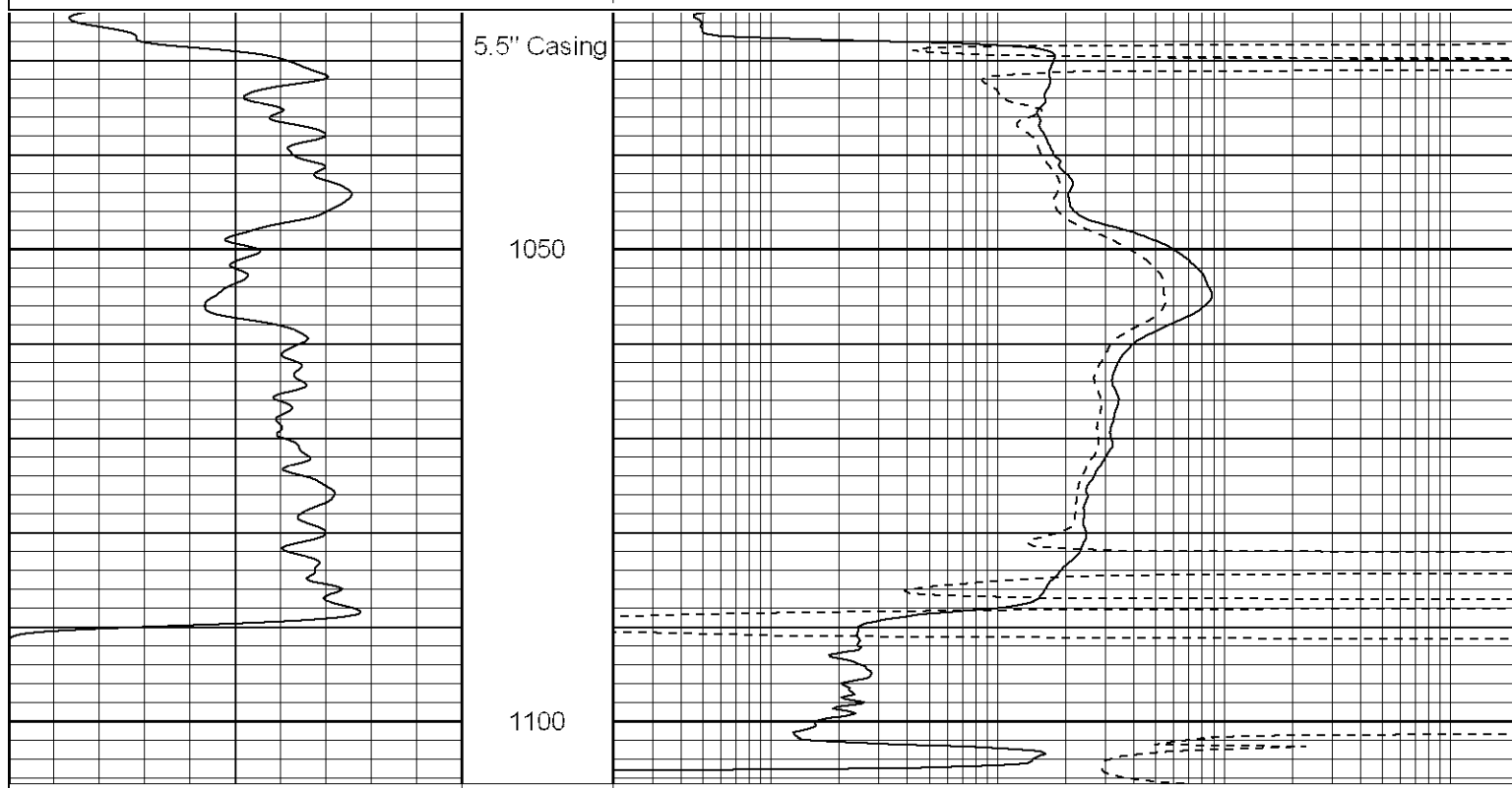
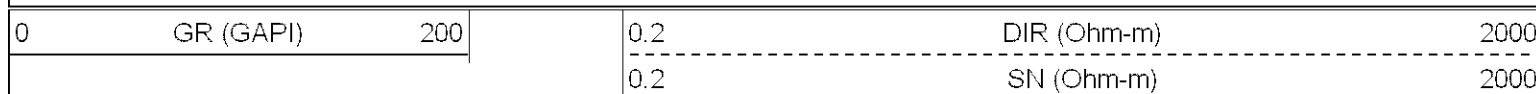


5.5" Casing
 950





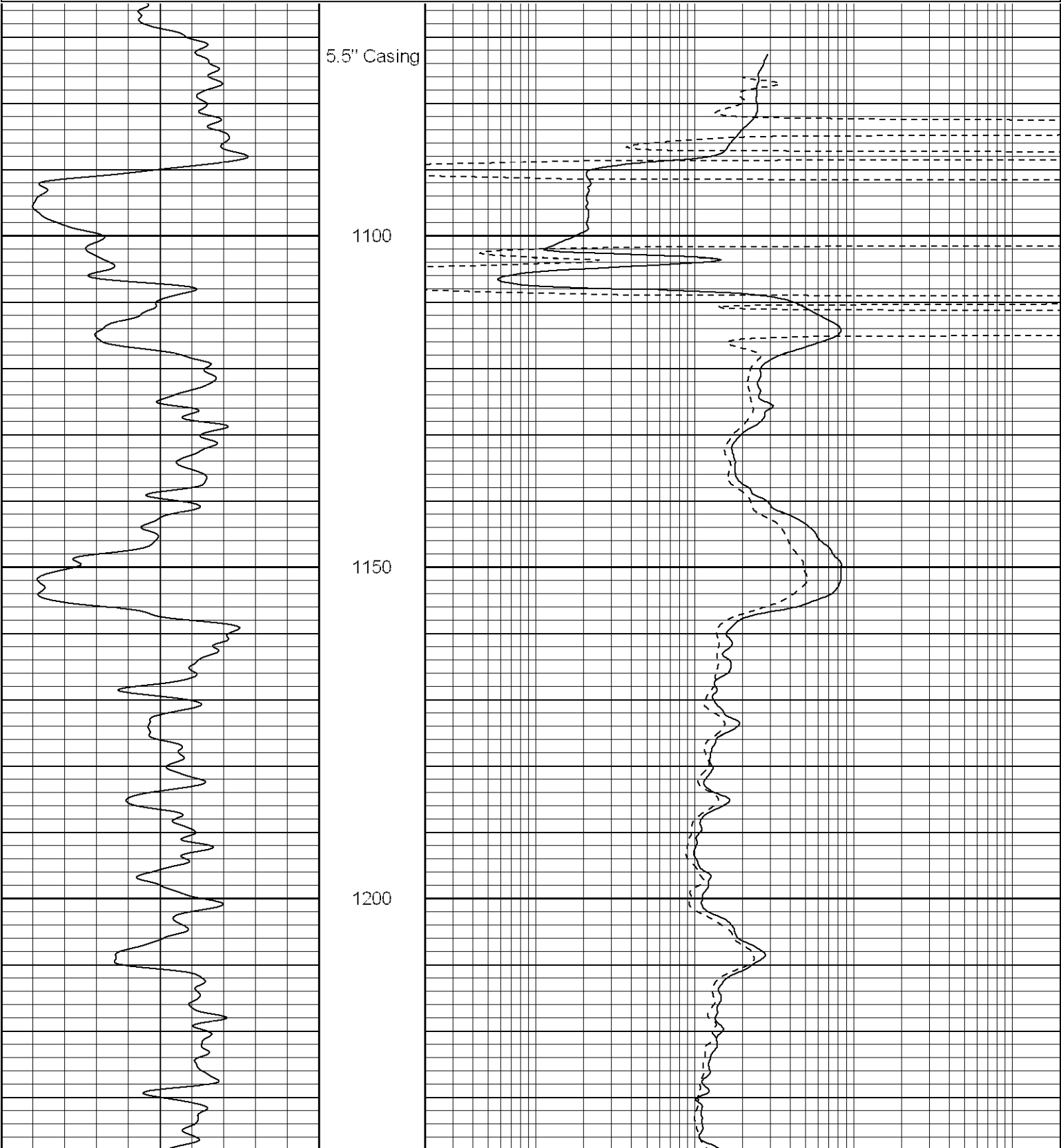
Database File: pattic.db
Dataset Pathname: pass4
Presentation Format: iel
Dataset Creation: Fri Apr 20 07:19:16 2007 by Calc Open-Cased 061129
Charted by: Depth in Feet scaled 1:240

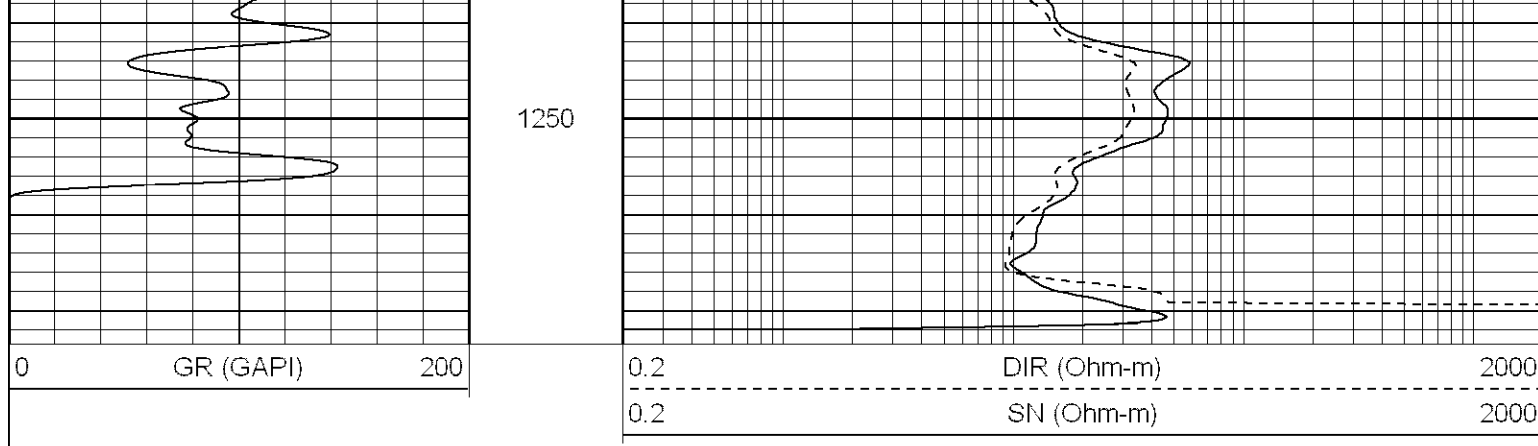


0	GR (GAPI)	200	0.2	DIR (Ohm-m)	2000
			0.2	SN (Ohm-m)	2000

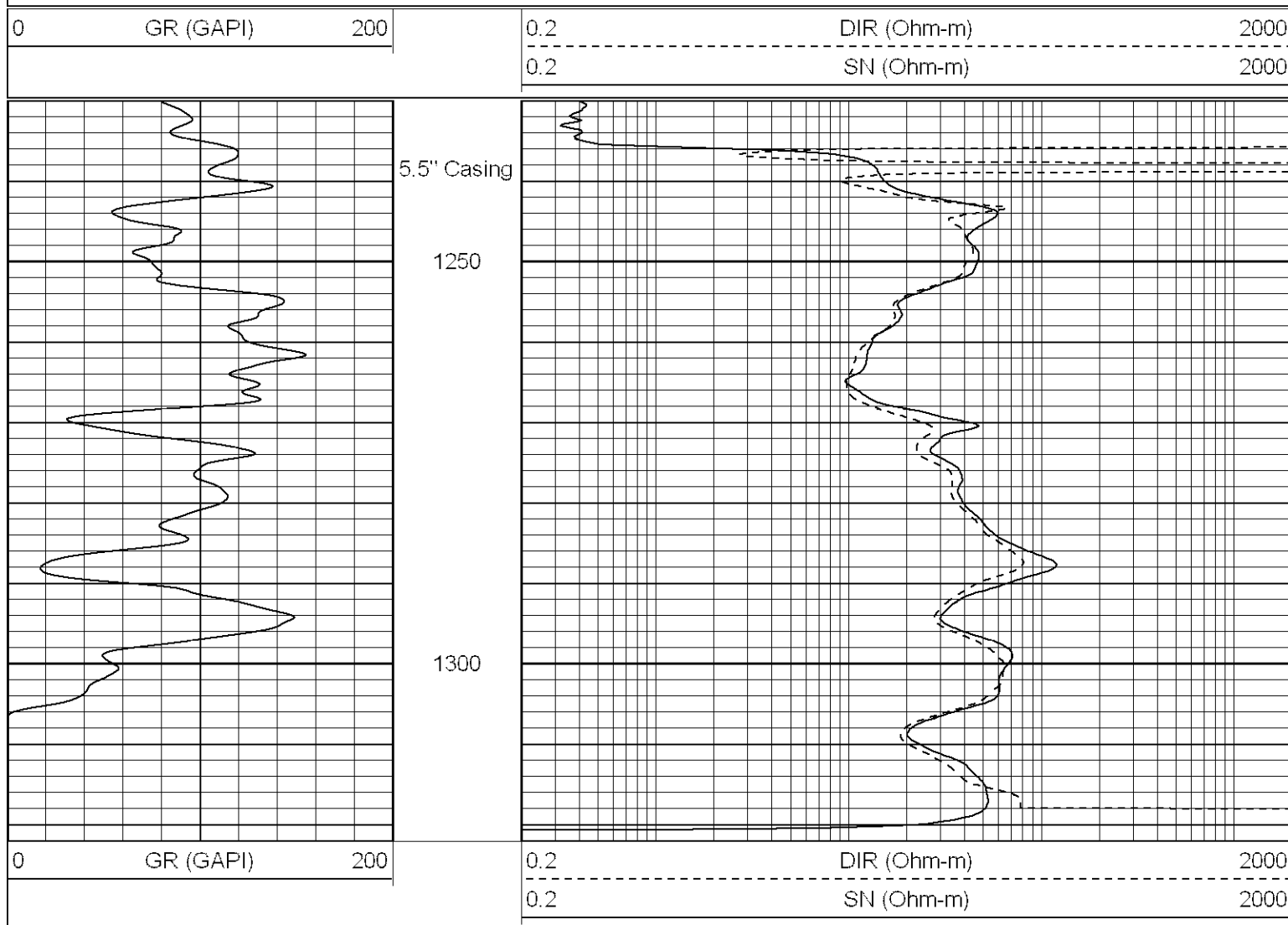
Database File:	pattic.db
Dataset Pathname:	pass6
Presentation Format:	iel
Dataset Creation:	Fri Apr 20 09:05:49 2007 by Log Open-Cased 061129
Charted by:	Depth in Feet scaled 1:240

0	GR (GAPI)	200	0.2	DIR (Ohm-m)	2000
			0.2	SN (Ohm-m)	2000

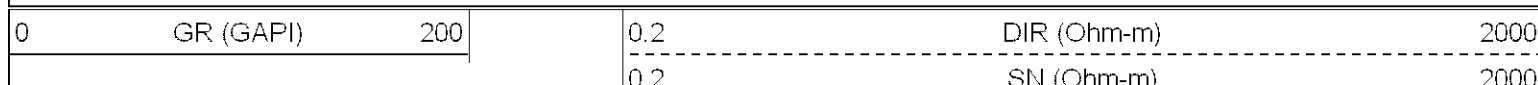


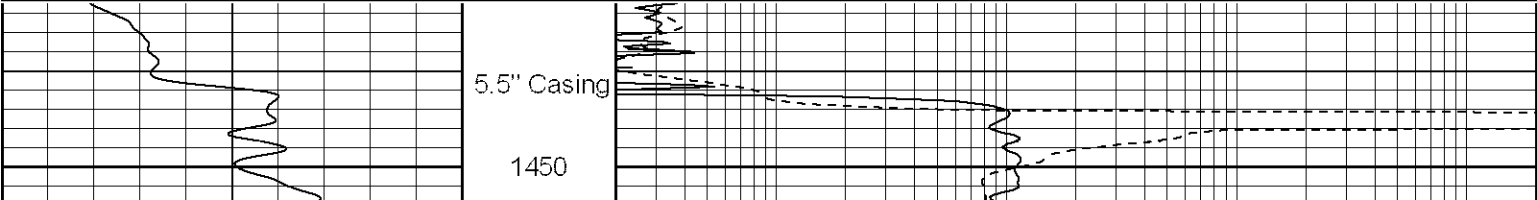
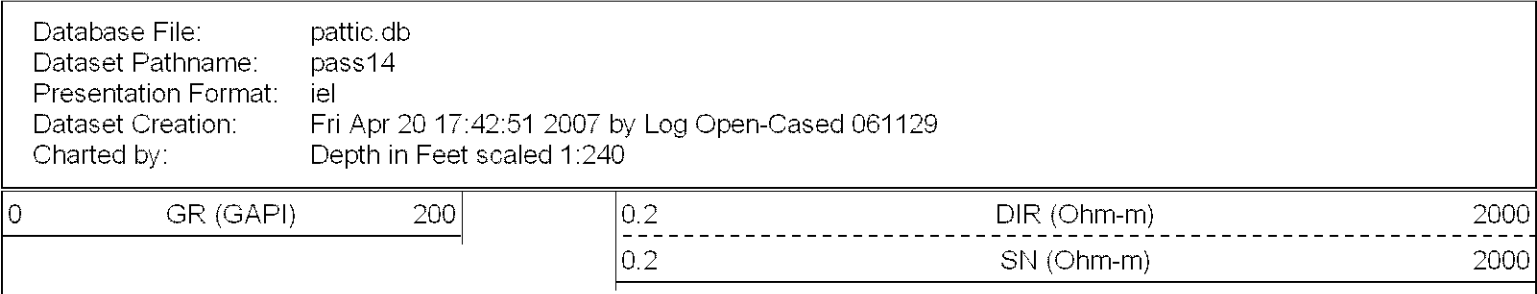
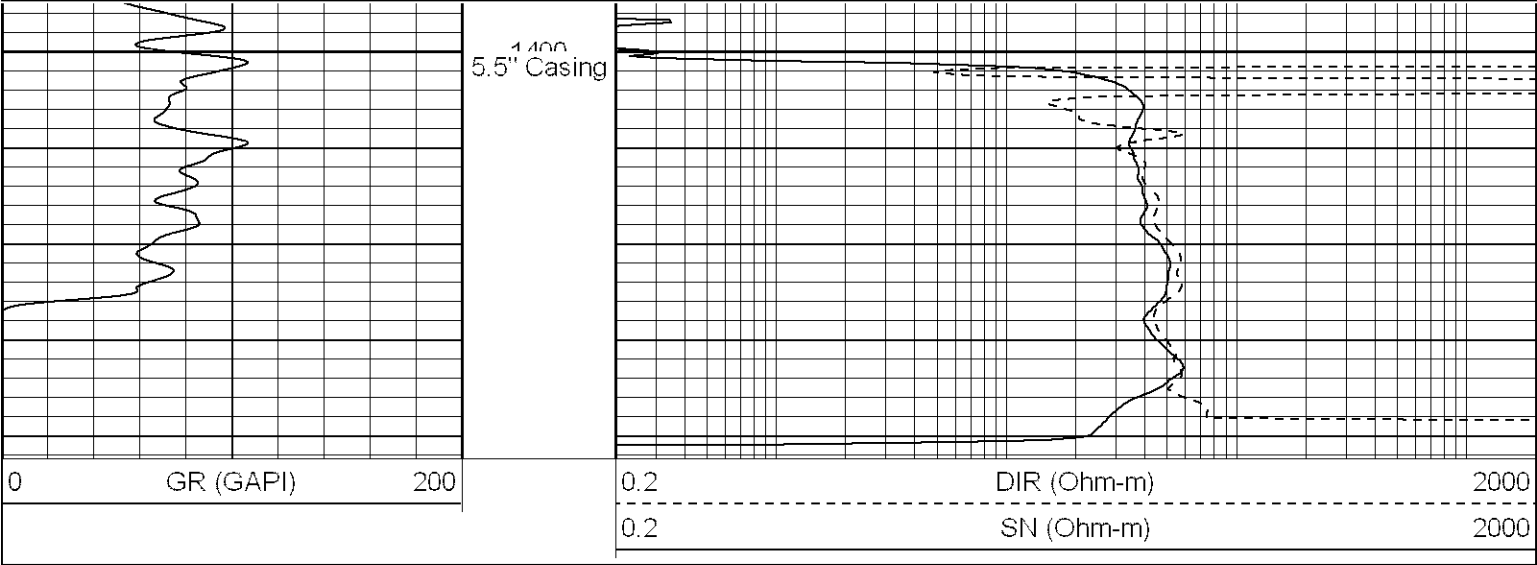
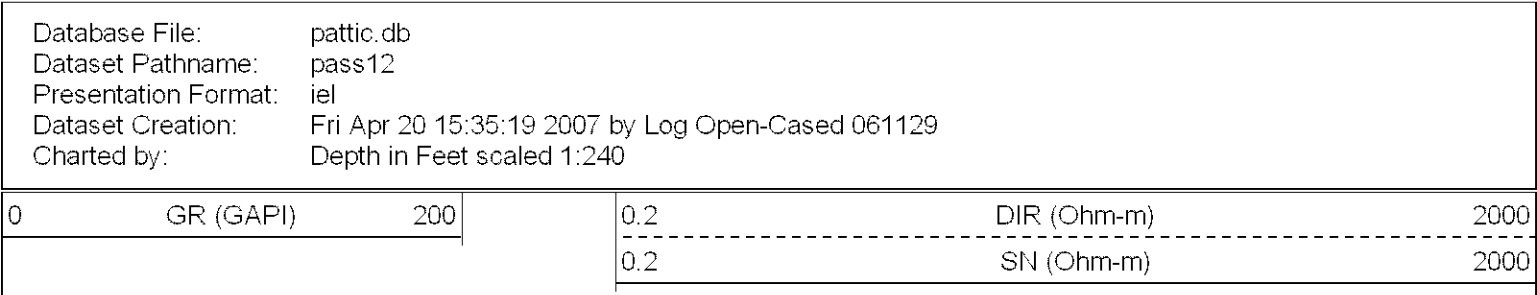
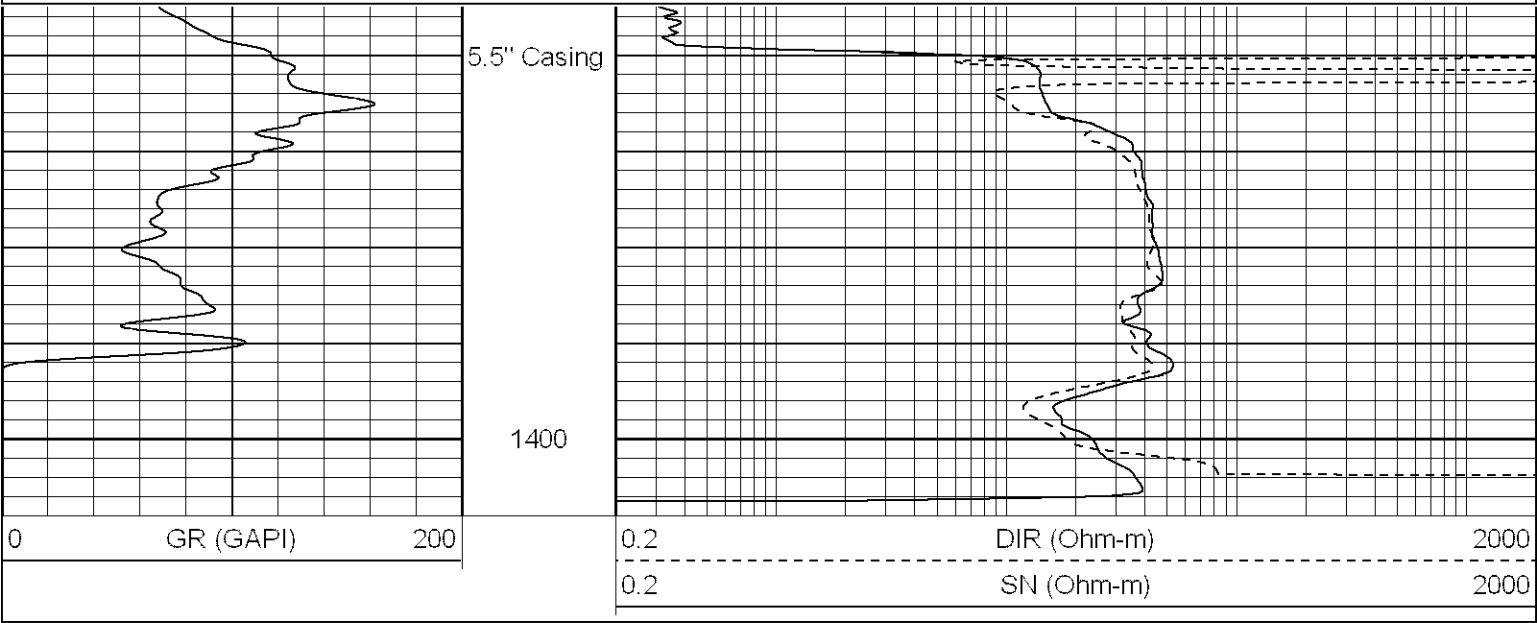


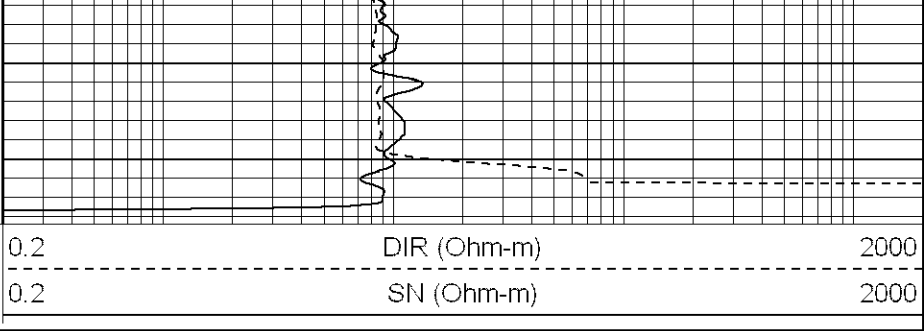
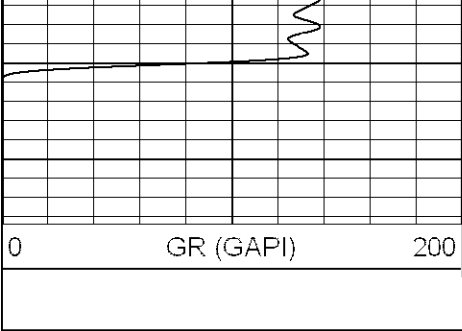
Database File: pattic.db
 Dataset Pathname: pass8
 Presentation Format: iel
 Dataset Creation: Fri Apr 20 11:10:04 2007 by Calc Open-Cased 061129
 Charted by: Depth in Feet scaled 1:240



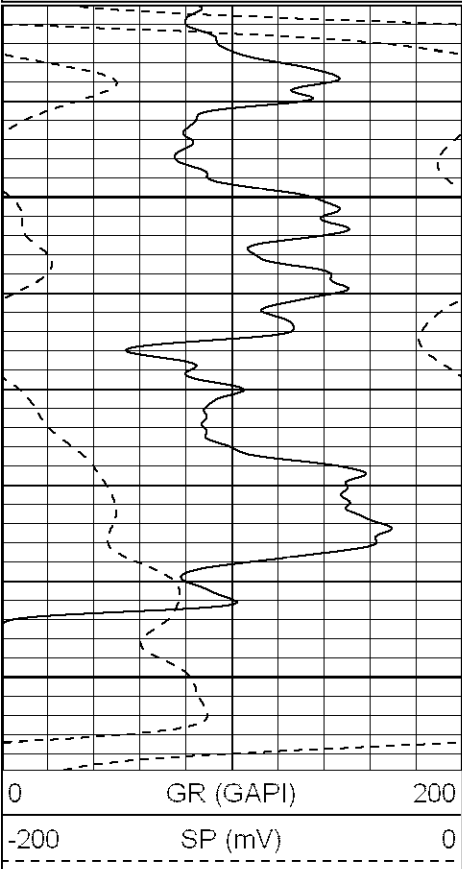
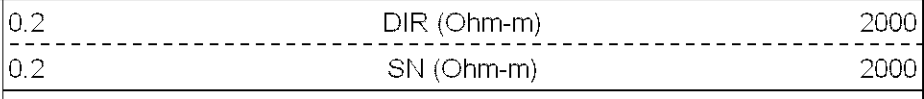
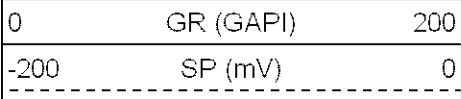
Database File: pattic.db
 Dataset Pathname: pass10
 Presentation Format: iel
 Dataset Creation: Fri Apr 20 13:59:04 2007 by Log Open-Cased 061129
 Charted by: Depth in Feet scaled 1:240







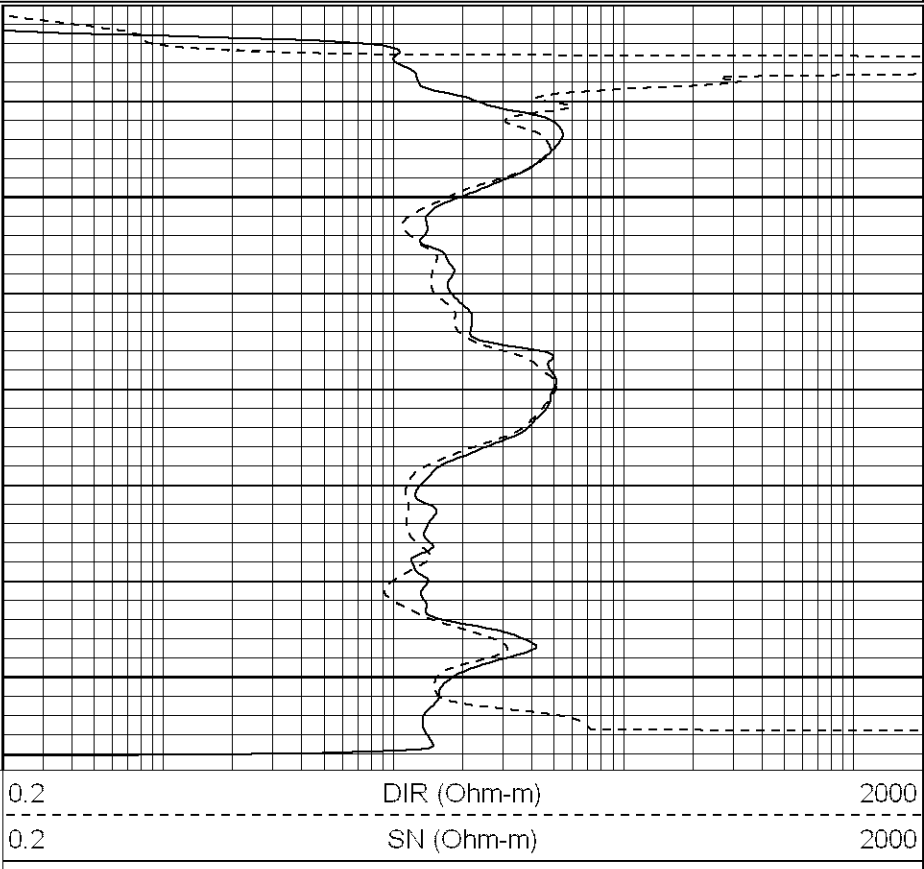
Database File: pattic.db
 Dataset Pathname: pass16
 Presentation Format: iel
 Dataset Creation: Fri Apr 20 19:31:07 2007 by Log Open-Cased 061129
 Charted by: Depth in Feet scaled 1:240



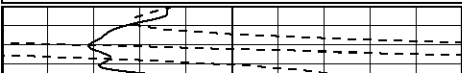
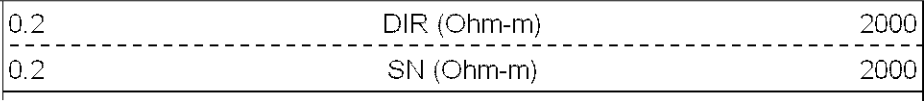
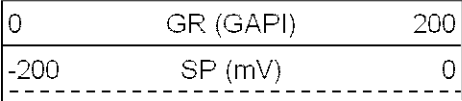
5.5" Casing

1500

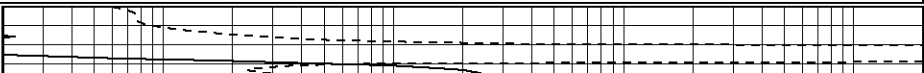
1550

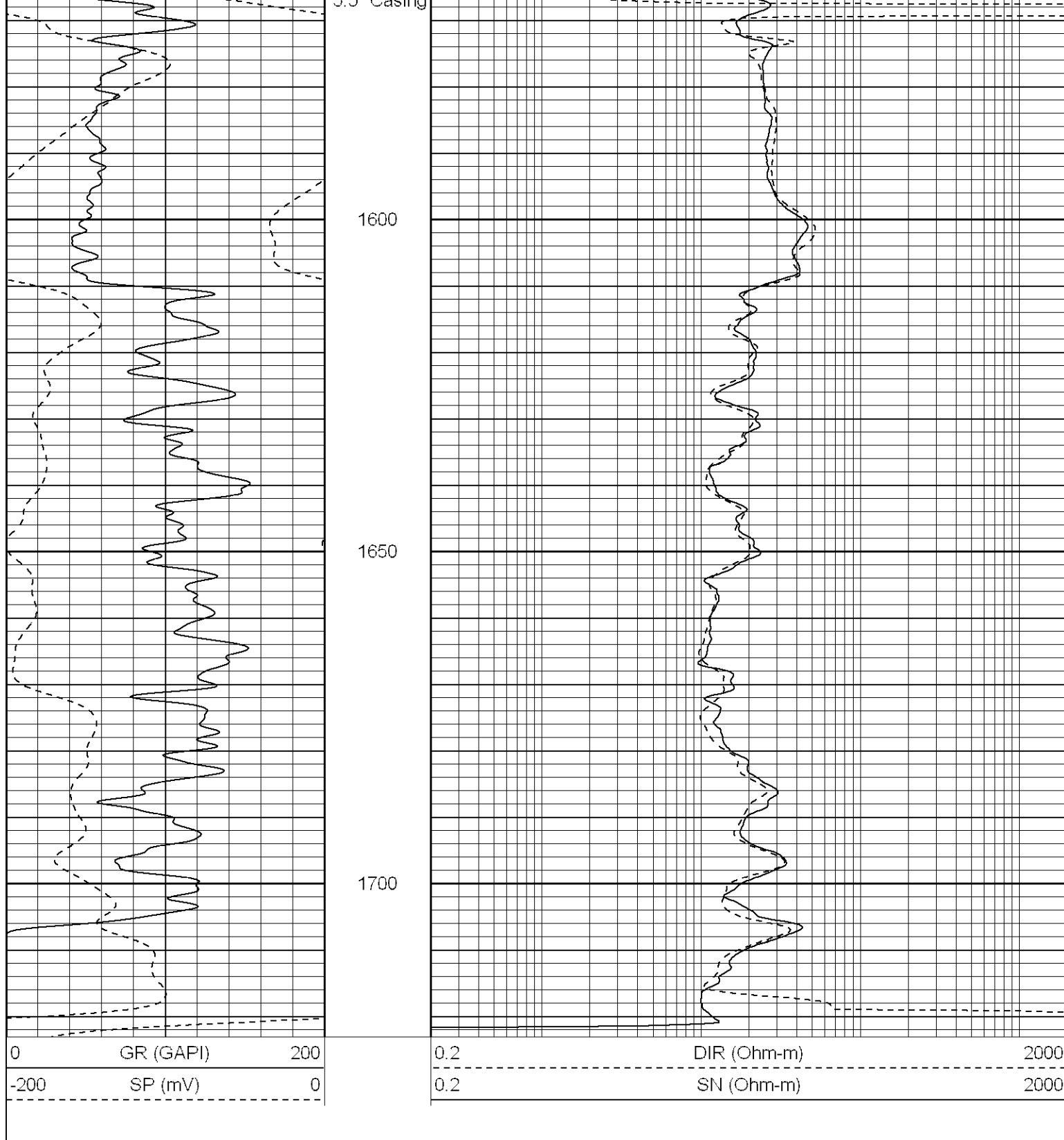


Database File: pattic.db
 Dataset Pathname: pass18.1
 Presentation Format: iel
 Dataset Creation: Mon Apr 23 09:38:27 2007 by Calc Open-Cased 061129
 Charted by: Depth in Feet scaled 1:240

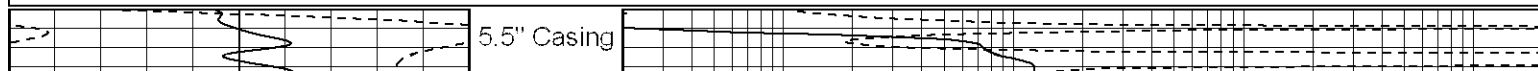
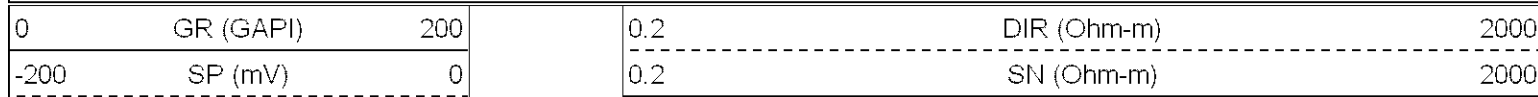


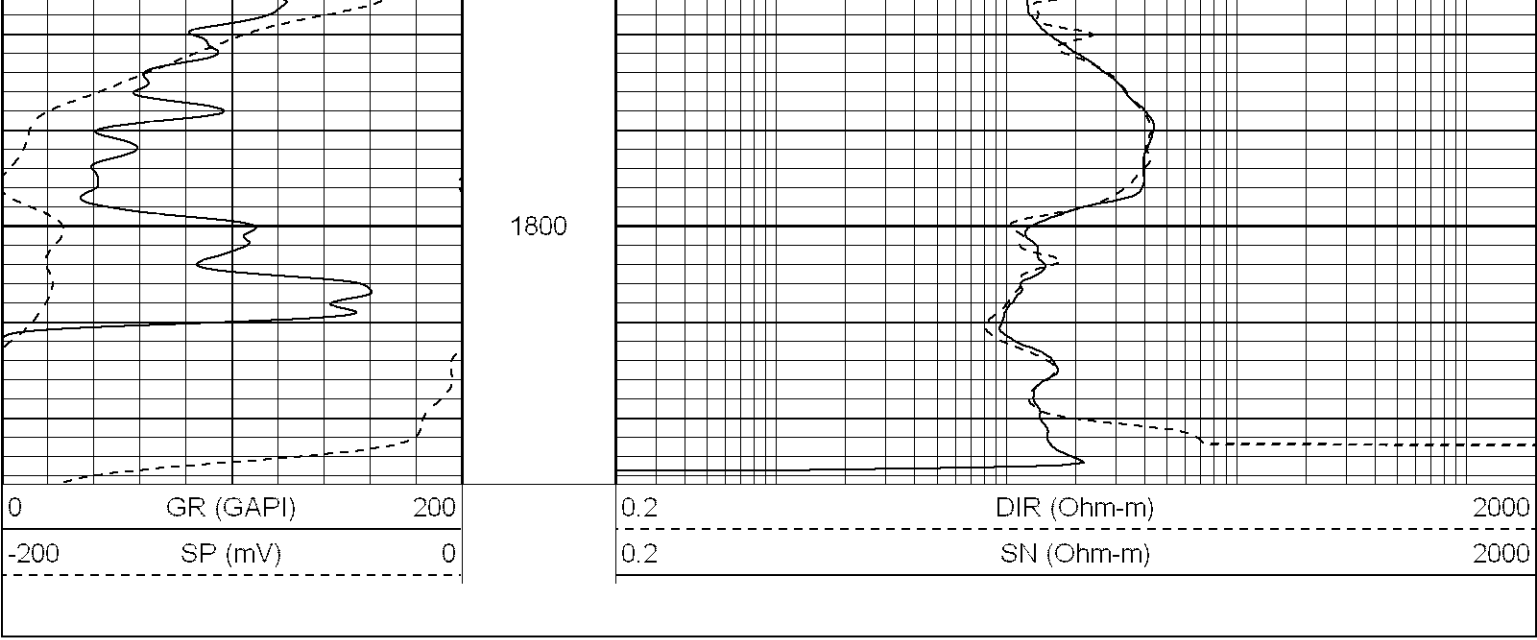
5.5" Casing



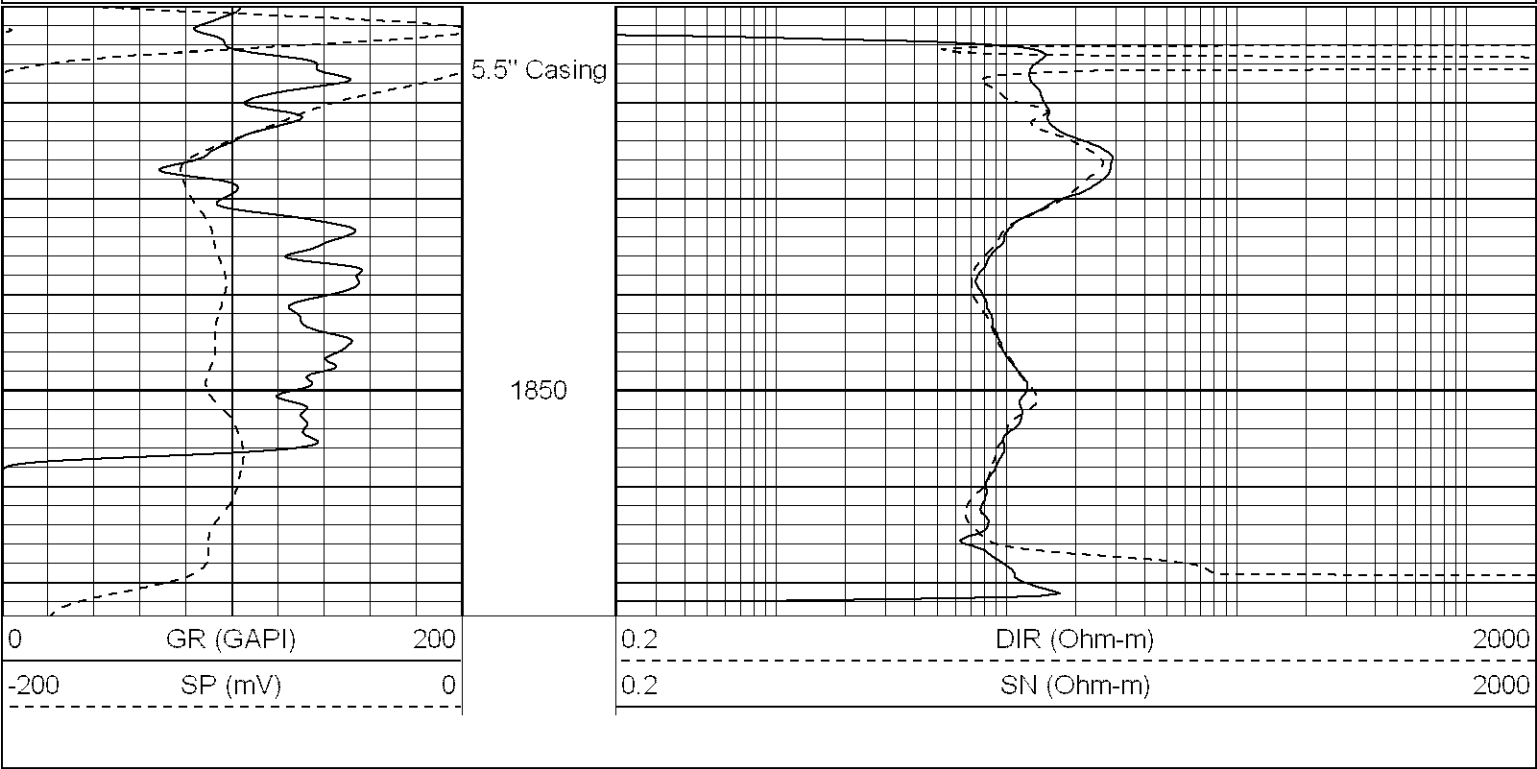
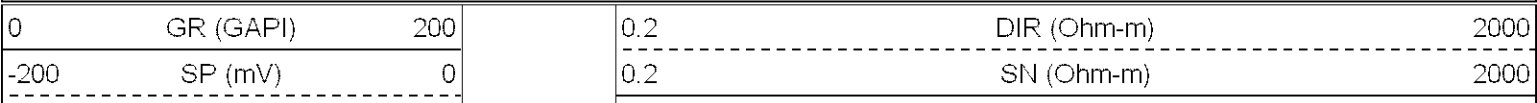


Database File: pattic.db
Dataset Pathname: pass20
Presentation Format: iel
Dataset Creation: Sat Apr 21 01:28:14 2007 by Log Open-Cased 061129
Charted by: Depth in Feet scaled 1:240

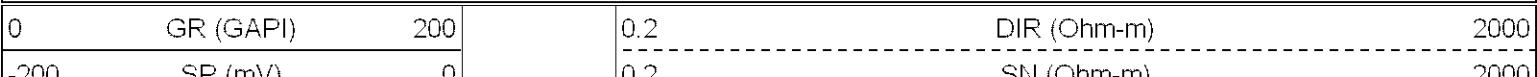


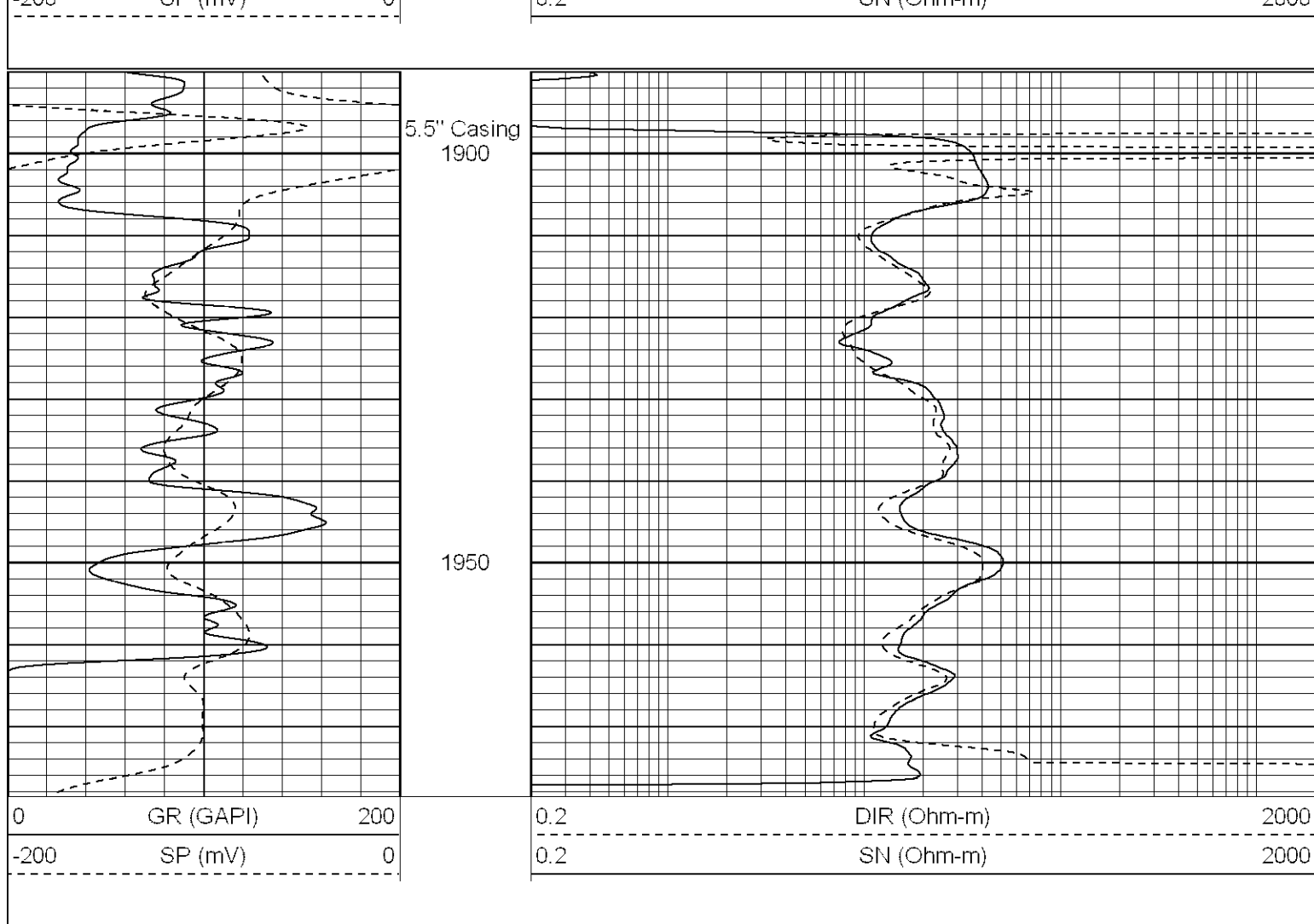


Database File: pattic.db
Dataset Pathname: pass22
Presentation Format: iel
Dataset Creation: Sat Apr 21 03:04:42 2007 by Log Open-Cased 061129
Charted by: Depth in Feet scaled 1:240

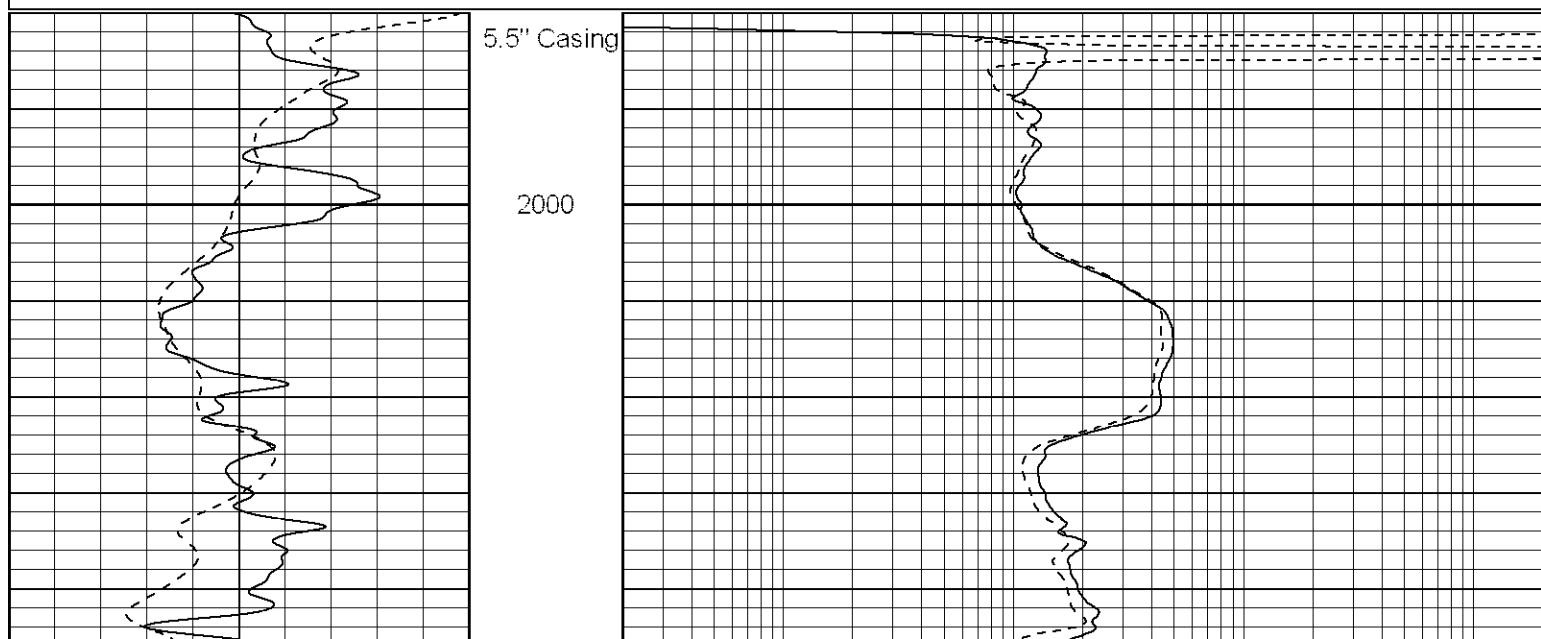
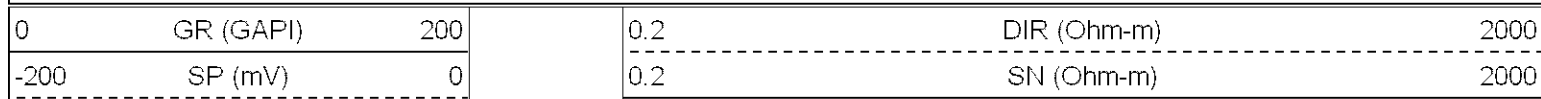


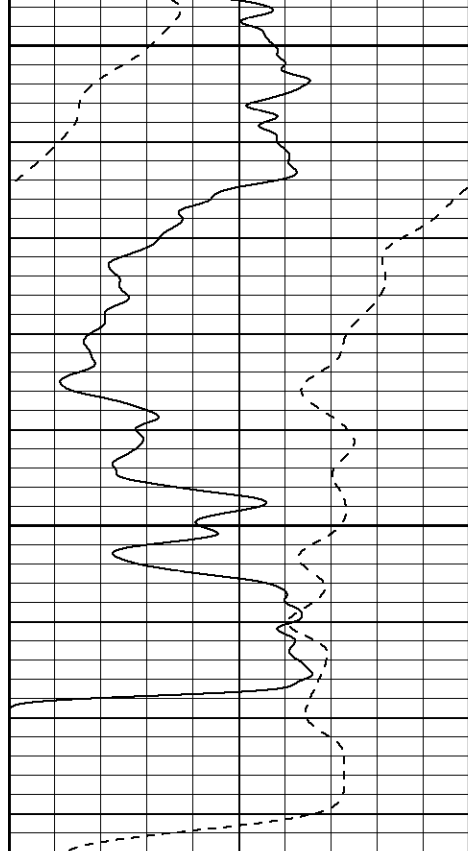
Database File: pattic.db
Dataset Pathname: pass25
Presentation Format: iel
Dataset Creation: Sat Apr 21 06:28:06 2007 by Log Open-Cased 061129
Charted by: Depth in Feet scaled 1:240





Database File: pattic.db
 Dataset Pathname: pass27
 Presentation Format: iel
 Dataset Creation: Sat Apr 21 08:23:31 2007 by Log Open-Cased 061129
 Charted by: Depth in Feet scaled 1:240

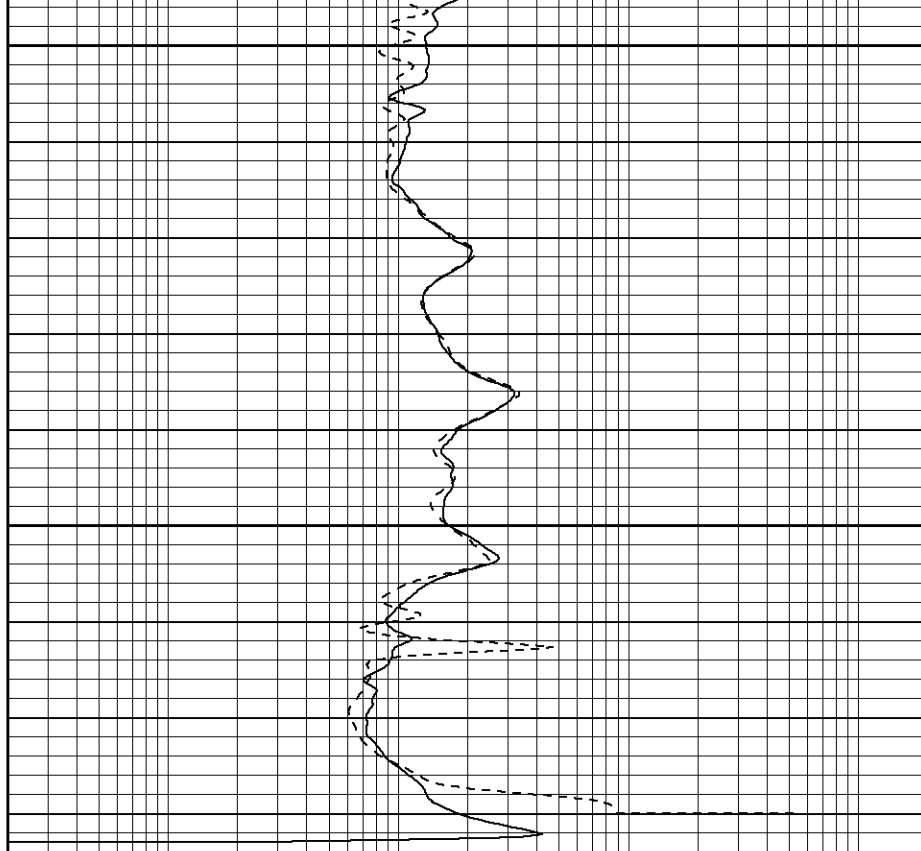




2050

2100

0 GR (GAPI) 200
-200 SP (mV) 0

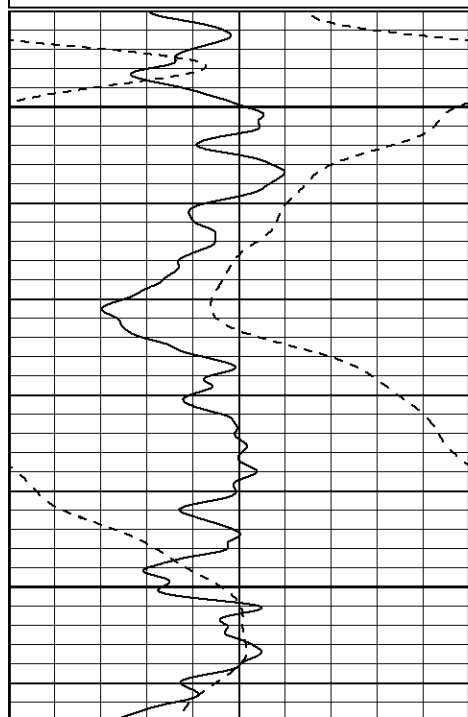


0.2 DIR (Ohm-m) 2000
0.2 SN (Ohm-m) 2000

Database File: pattic.db
Dataset Pathname: pass30.1
Presentation Format: iel
Dataset Creation: Sat Apr 21 11:02:17 2007 by Calc Open-Cased 061129
Charted by: Depth in Feet scaled 1:240

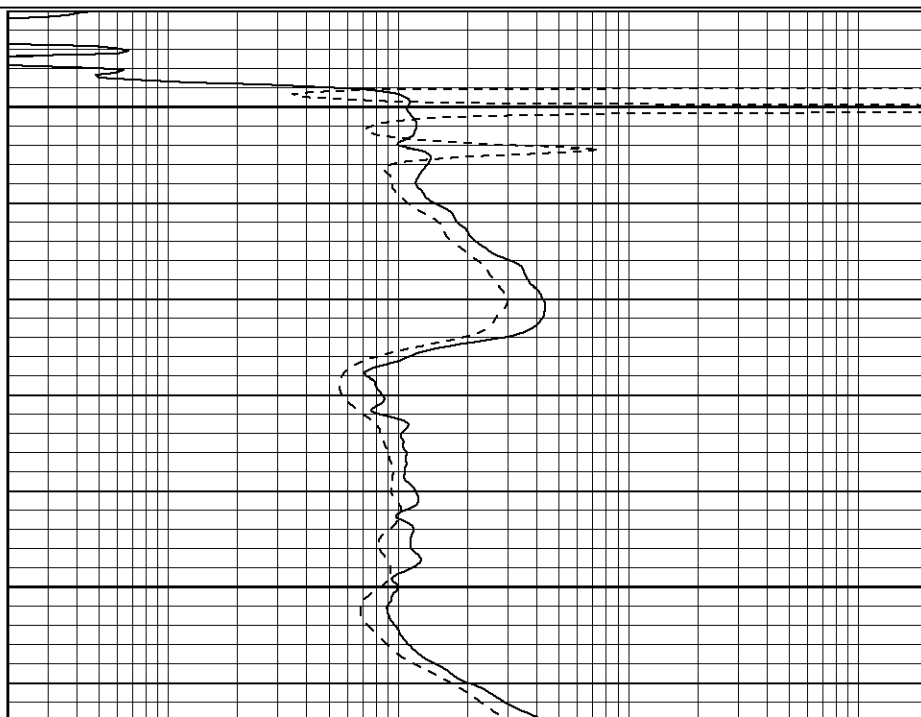
0 GR (GAPI) 200
-200 SP (mV) 0

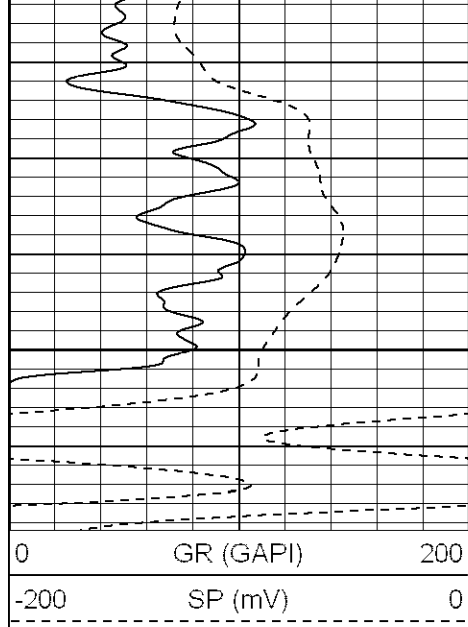
0.2 DIR (Ohm-m) 2000
0.2 SN (Ohm-m) 2000



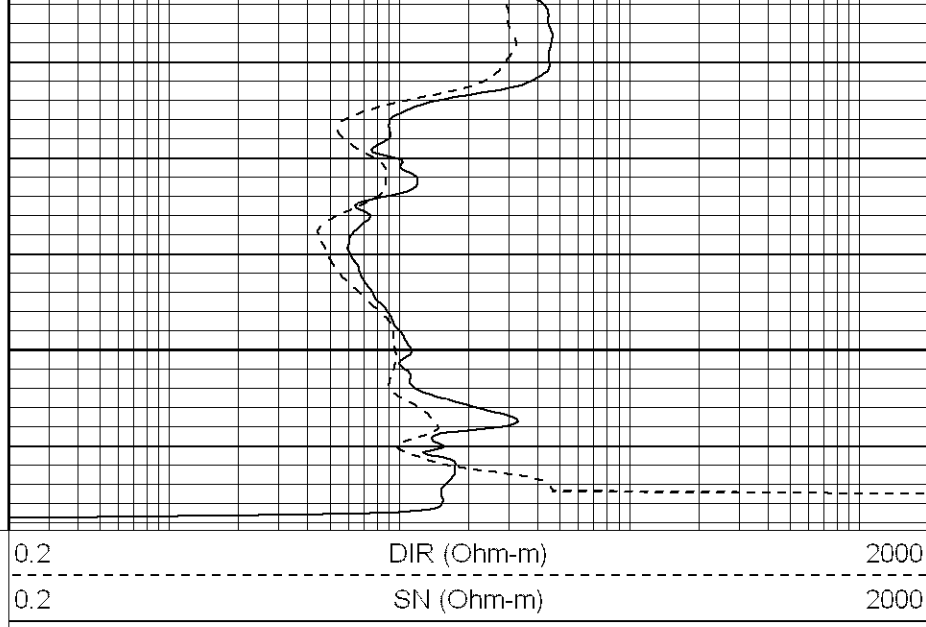
5.5" Casing
2150

2200

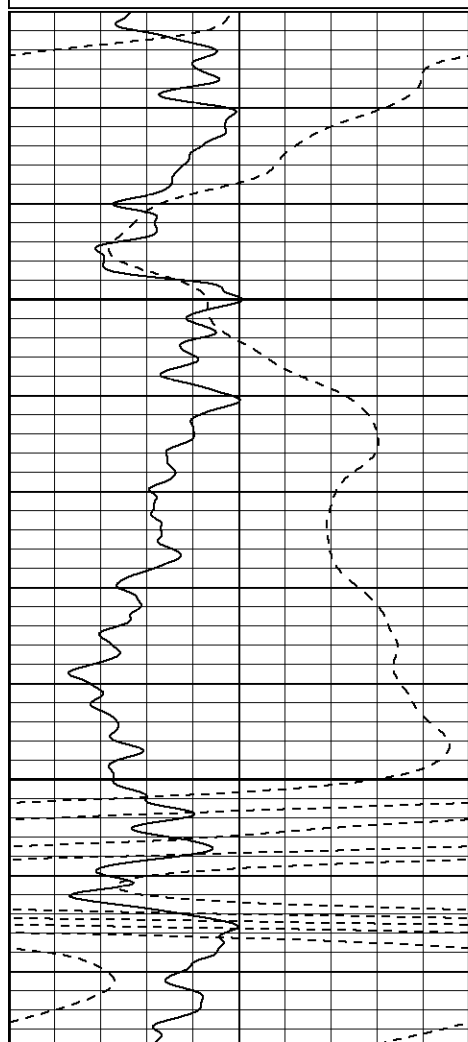
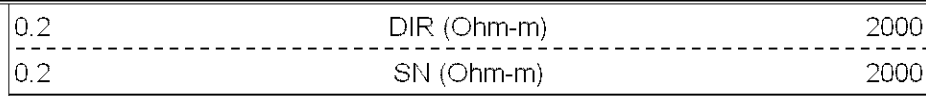
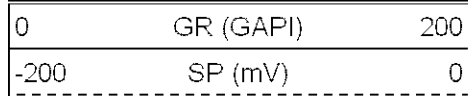




2250



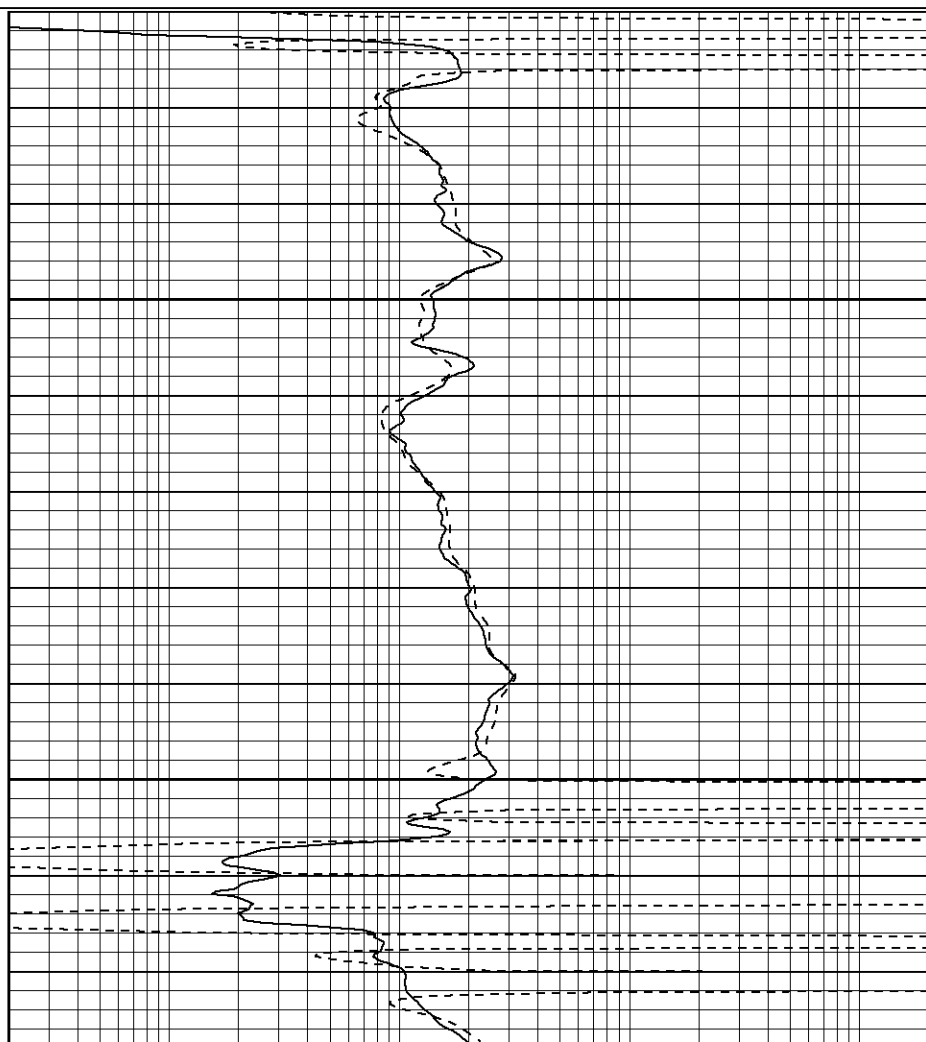
Database File: pattic.db
 Dataset Pathname: pass32
 Presentation Format: iel
 Dataset Creation: Sat Apr 21 13:10:54 2007 by Log Open-Cased 061129
 Charted by: Depth in Feet scaled 1:240

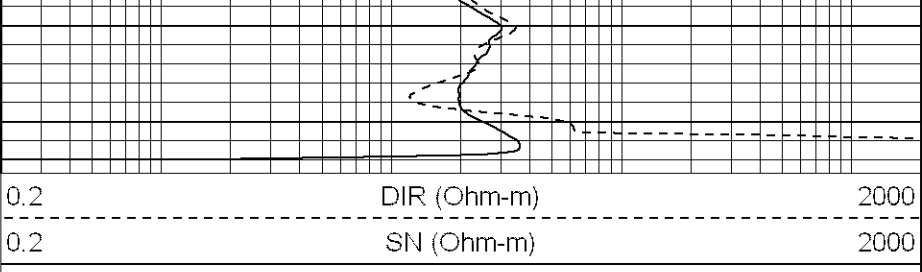
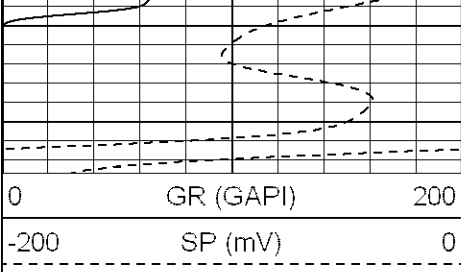


5.5" Casing

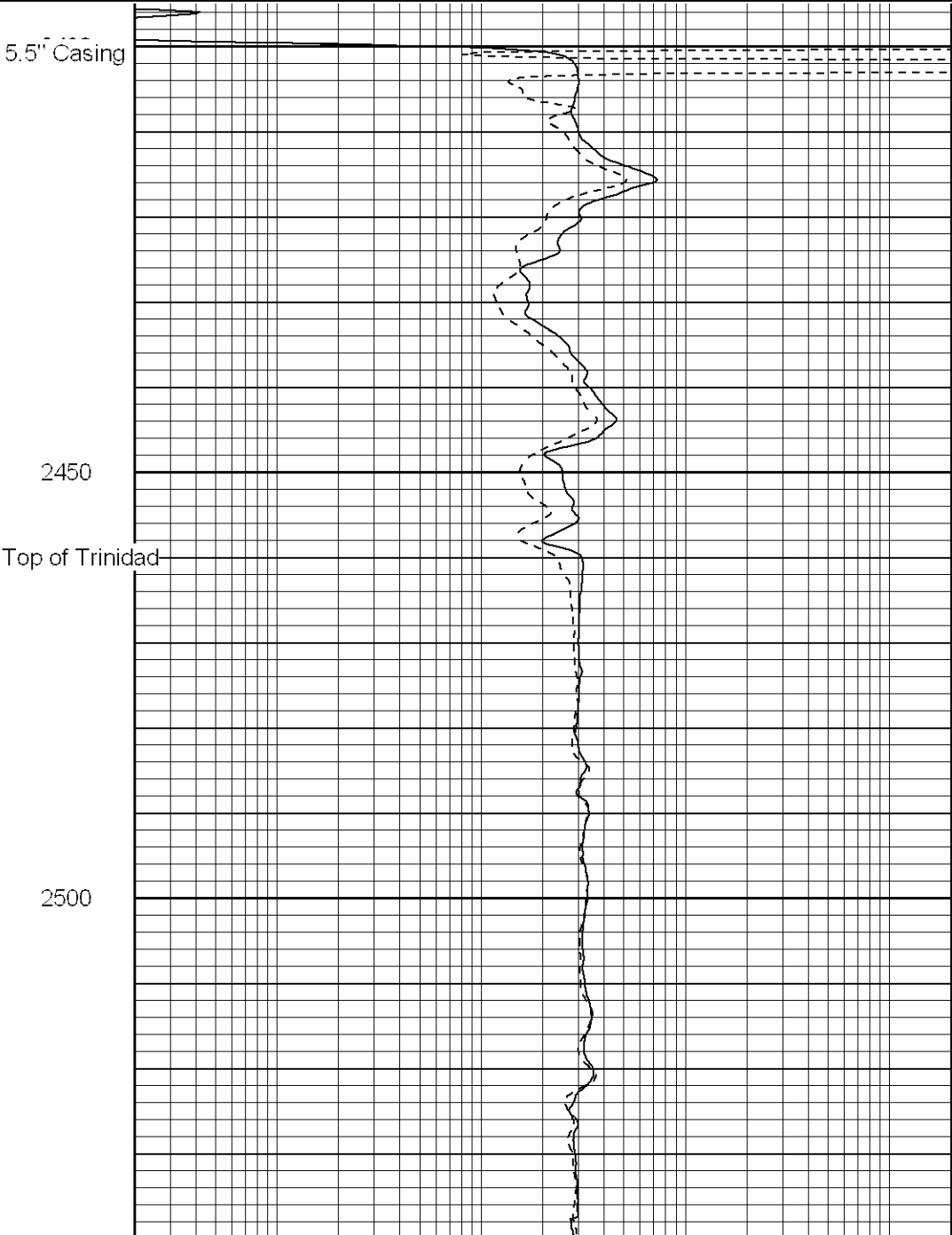
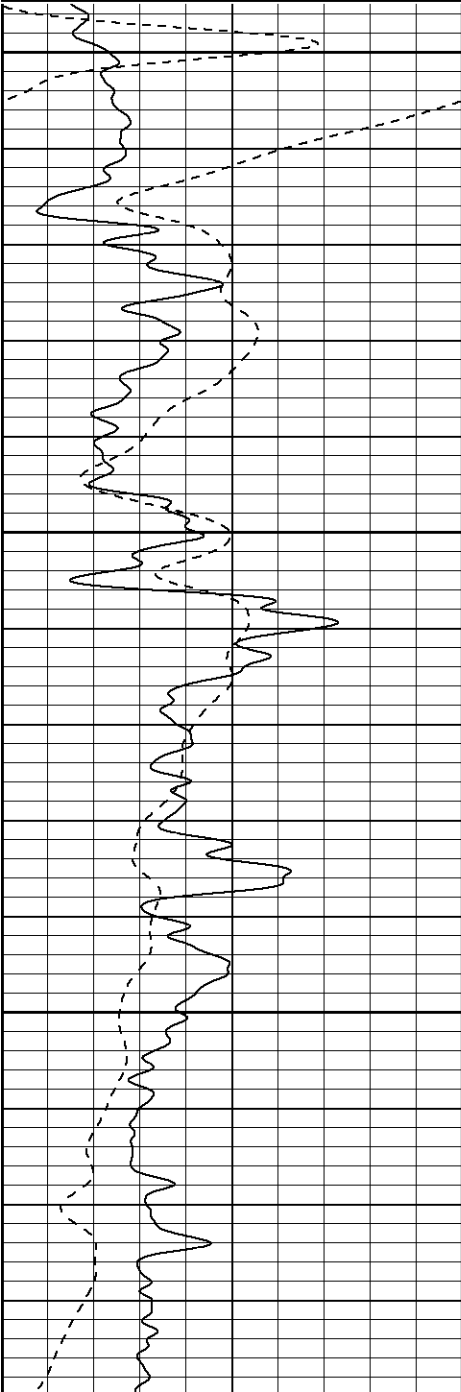
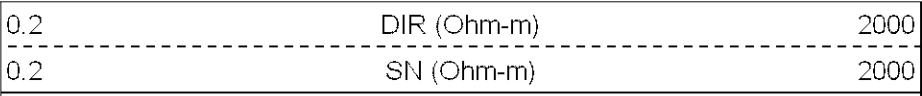
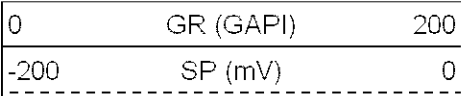
2300

2350





Database File: pattic.db
Dataset Pathname: pass34
Presentation Format: iel
Dataset Creation: Sat Apr 21 15:24:13 2007 by Log Open-Cased 061129
Charted by: Depth in Feet scaled 1:240

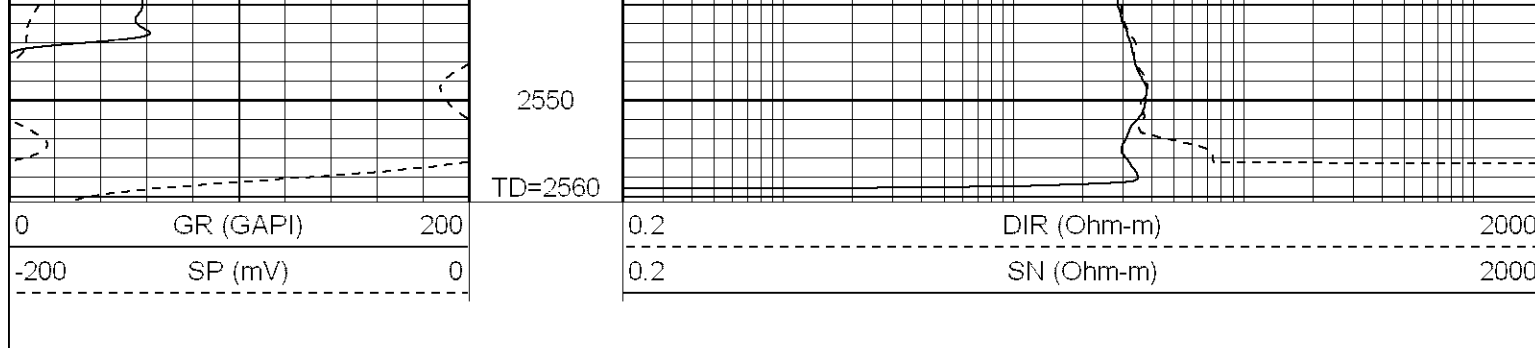


5.5" Casing

2450

Top of Trinidad

2500



Calibration Report

Database File: pattic.db
Dataset Pathname: pass34
Dataset Creation: Sat Apr 21 15:24:13 2007 by Log Open-Cased 061129

Induction Tool Calibration Report

Serial Number: 040903
Tool Model: Probe
Downhole Cal Performed: Sun Apr 01 16:29:28 2007
Surface Cal Performed: Sun Apr 01 16:53:33 2007

Surface Calibration:	Air	Loop	
Conductivity Reference:	0.000	500.000	mmho
Conductivity Reading:	0.009	0.649	V
Internal Reference:	Zero	Cal	
Conductivity Reference:	0.000	500.000	mmho
Conductivity Reading:	0.013	0.649	V

Downhole Calibration:	Internal Zero	Internal Cal	
Conductivity Reference:	0.378	500.034	mmho
Conductivity Reading:	0.335	500.259	V
Short Normal Reference:	0.000	20.000	Ohm-m
Short Normal Reading:	0.006	0.234	V

Results:	Gain	Offset
Loop Conductivity:	781.229	-7.031
Downhole Correction:	0.999	0.043
Short Normal Resistivity:	69.000	-0.483

Gamma Ray Calibration Report

Serial Number: 804
Tool Model: 2.75POH
Performed: Fri Apr 20 04:47:26 2007

Calibrator Value: 1.0 GAPI

Background Reading: 0.0 cps
Calibrator Reading: 1.0 cps

Sensitivity: 0.6100 GAPI/cps

Sensor	Offset (ft)	Schematic	Description	Len (ft)	OD (in)	Wt (lb)
GR	16.41		None	0.75	1.50	5.00
			GR-2.75POH (804) Probe	3.73	2.75	43.00

