

Patterson

**SINGLE
INDUCTION
LOG**

Company Pioneer Natural Resources
Well Wrangler 44-32 Tr
Field Purgatoire River
County Las Animas State Colorado

Location: API # : 05 071 08561 00

1104' FSL & 922' FEL

SEC 32 TWP 31S RGE 66W

Permanent Datum Ground Level Elevation 7463'
Log Measured From Kelly Bushing 4' Above G.L.
Drilling Measured From Kelly Bushing

Other Services
CDL
NEUTRON
Elevation
K.B. 7467'
D.F. -----
G.L. 7463'

Date 10-19-05

Run Number One

Depth Driller 2210'

Depth Logger 2220'

Bottom Logged Interval 2218'

Top Log Interval Surface Casing

Casing Driller 8 5/8" @ 1011'

Casing Logger 1011'

Bit Size 7 7/8"

Type Fluid in Hole Water

Density / Viscosity ///

pH / Fluid Loss ///

Source of Sample ///

Rm @ Meas. Temp ///

Rmf @ Meas. Temp ///

Rmc @ Meas. Temp ///

Source of Rmf / Rmc ///

Rm @ BHT ///

Time Circulation Stopped 12:45 P.M.

Time Logger on Bottom 3:10 P.M.

Maximum Recorded Temperature ///

Equipment Number T720

Location Trinidad

Recorded By M. Norton

Witnessed By Mr. Edsel Pool

<<< Fold Here >>>

All interpretations are opinions based on inferences from electrical or other measurements and we cannot and do not guarantee the accuracy or correctness of any interpretation, and we shall not, except in the case of gross or willful negligence on our part, be liable or responsible for any loss, costs, damages, or expenses incurred or sustained by anyone resulting from any interpretation made by any of our officers, agents or employees. These interpretations are also subject to our general terms and conditions set out in our current Price Schedule.

Comments

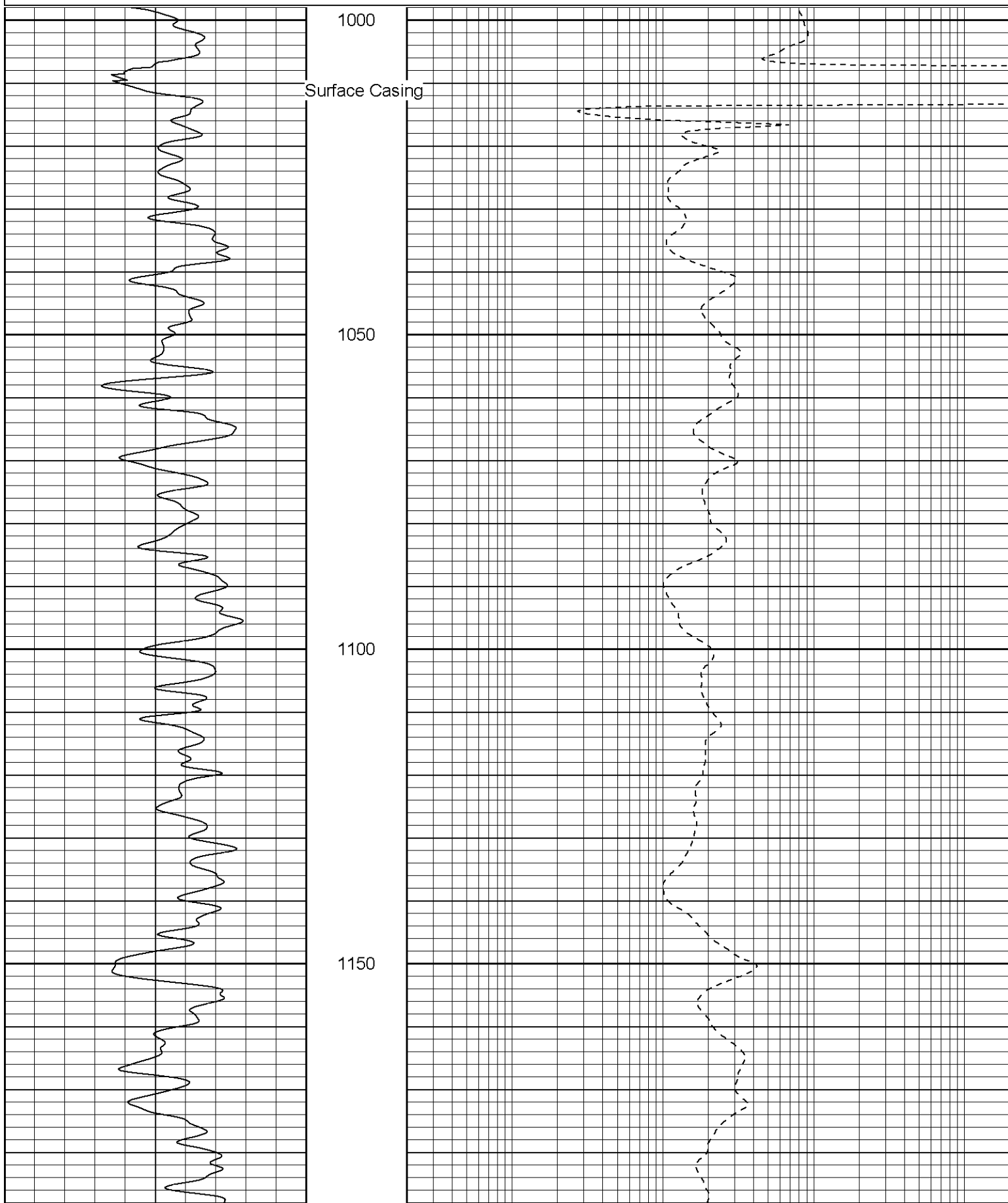
Well Directions:
Aguilar West, Second Left Past Jarosa Gravel Pit On Main Road,
Drive Thru One Location, Go Thru Double Gates Dead End On Location.

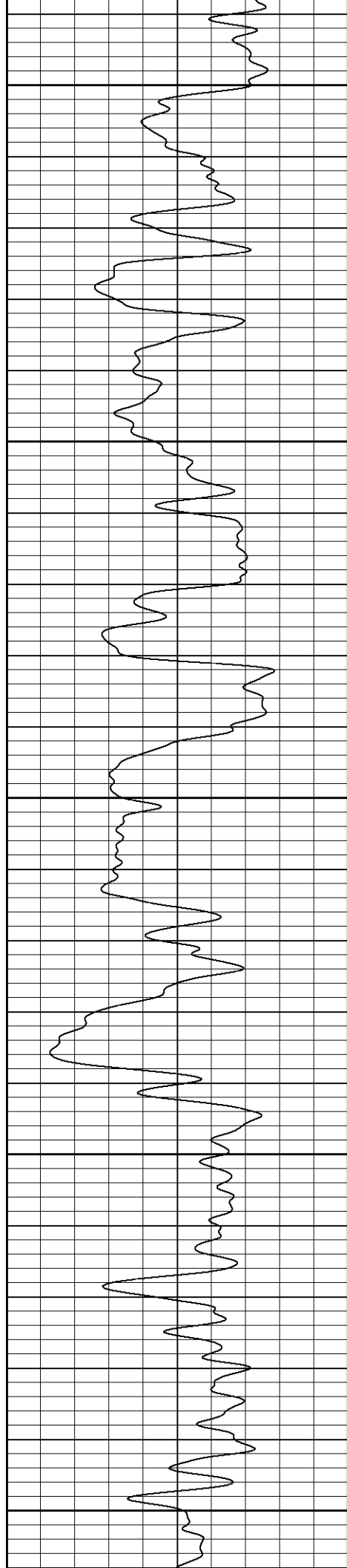
Patterson

Main Pass

Database File: wranglertr.db
Dataset Pathname: pass2.1
Presentation Format: iel
Dataset Creation: Wed Oct 19 17:03:30 2005 by Calc Warrior 7.0 STD Ope
Charted by: Depth in Feet scaled 1:240

0 GR (GAPI) 200 0.2 DIR (Ohm-m) 2000





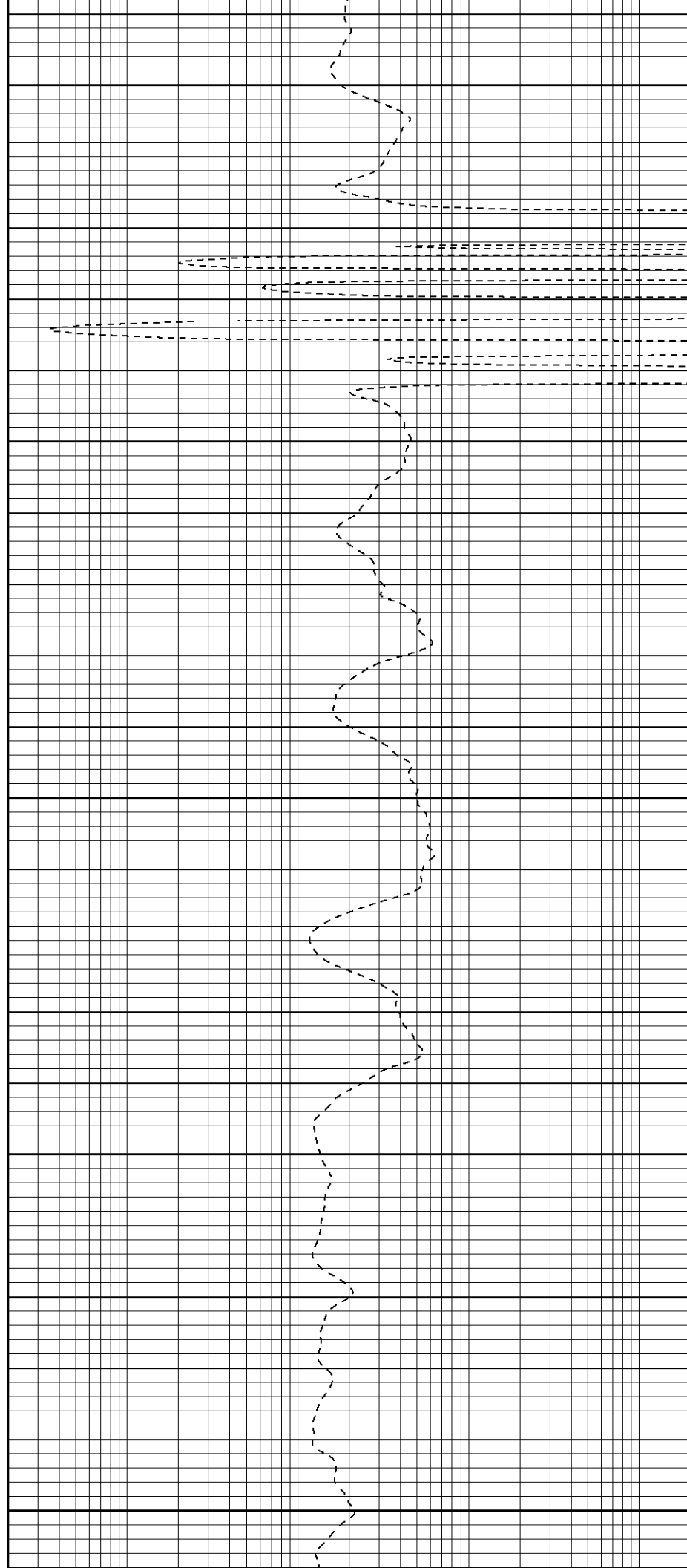
1200

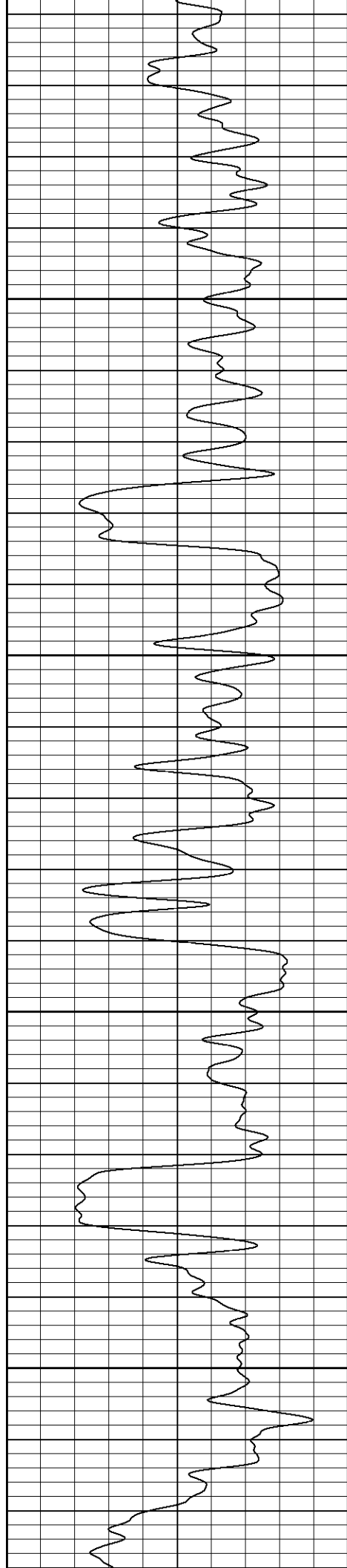
1250

1300

1350

1400



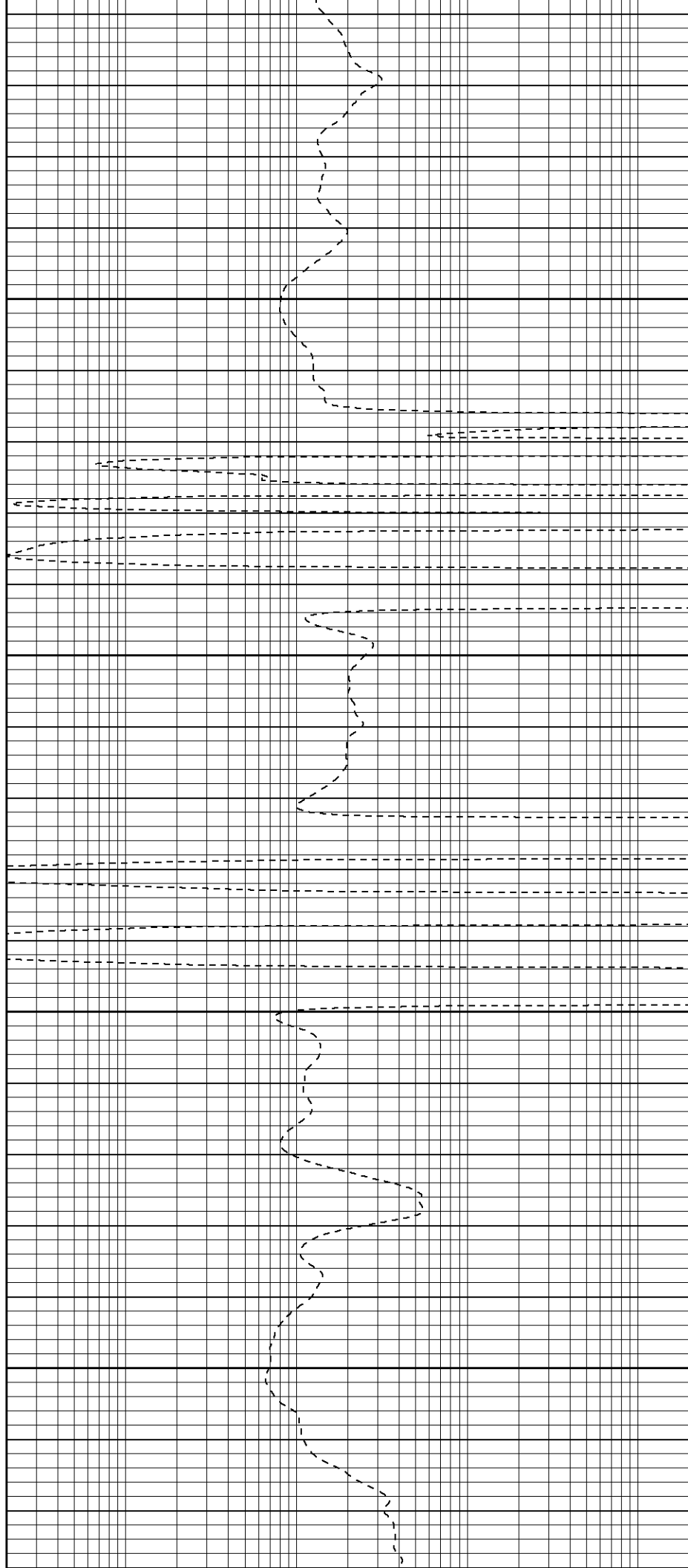


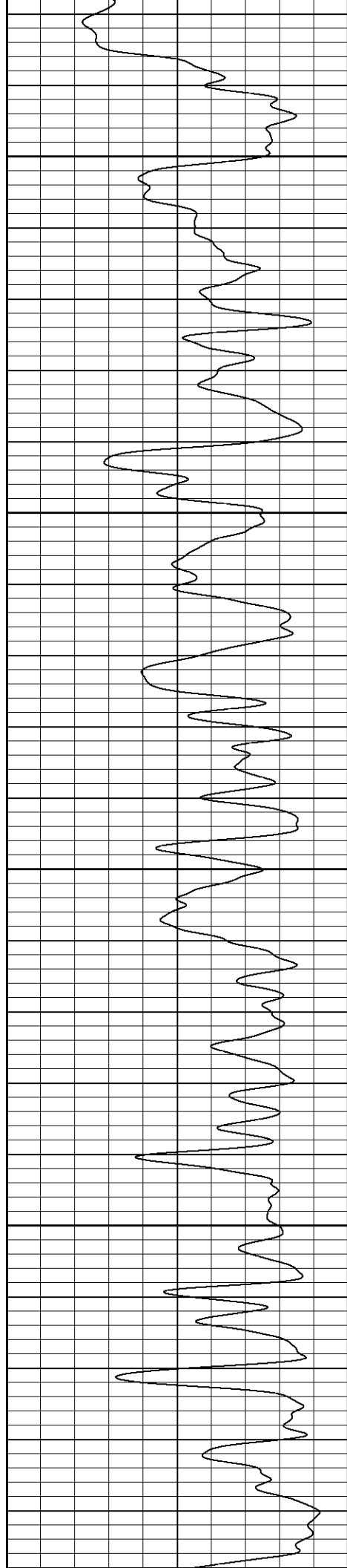
1450

1500

1550

1600



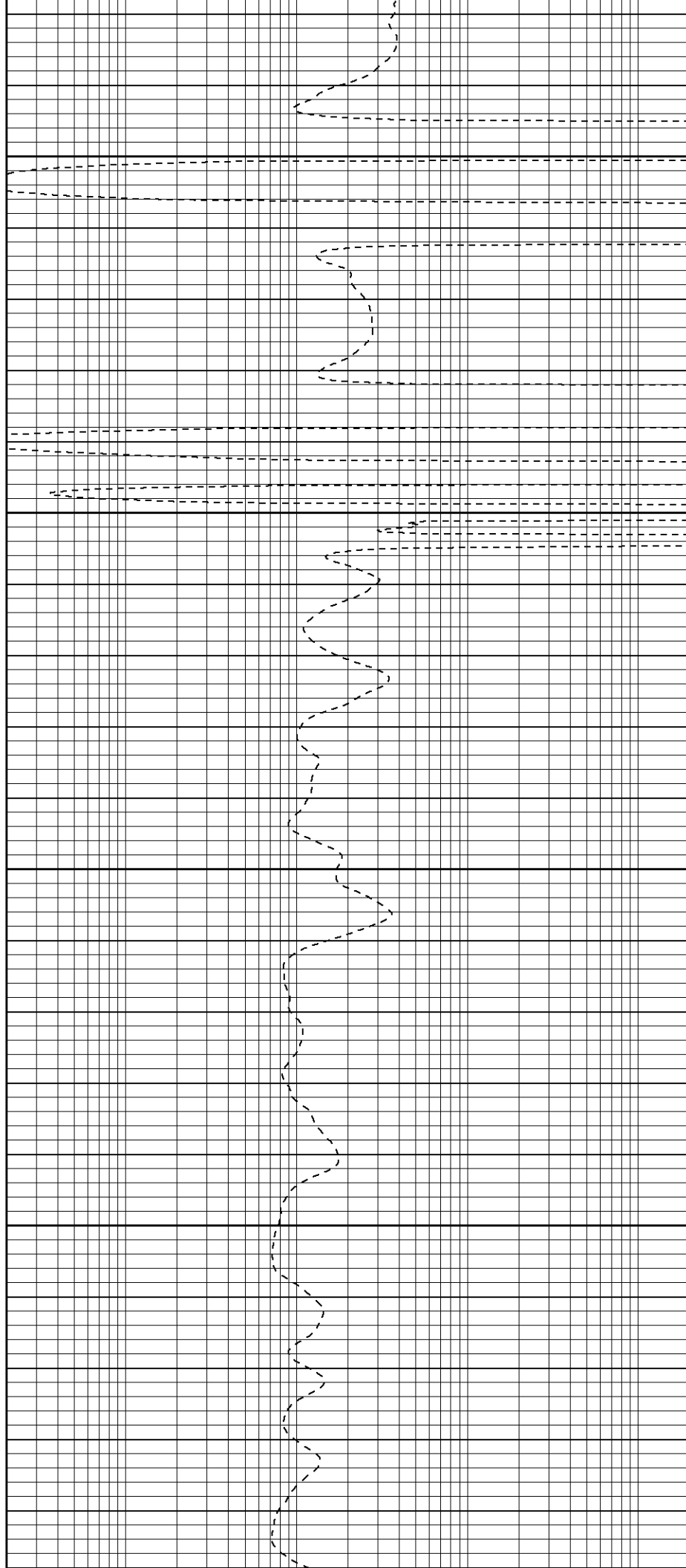


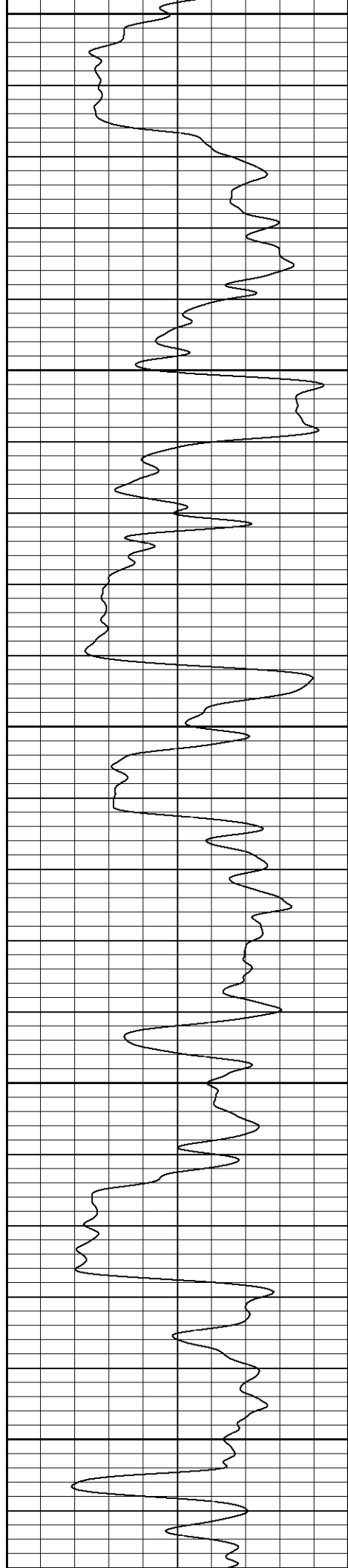
1650

1700

1750

1800





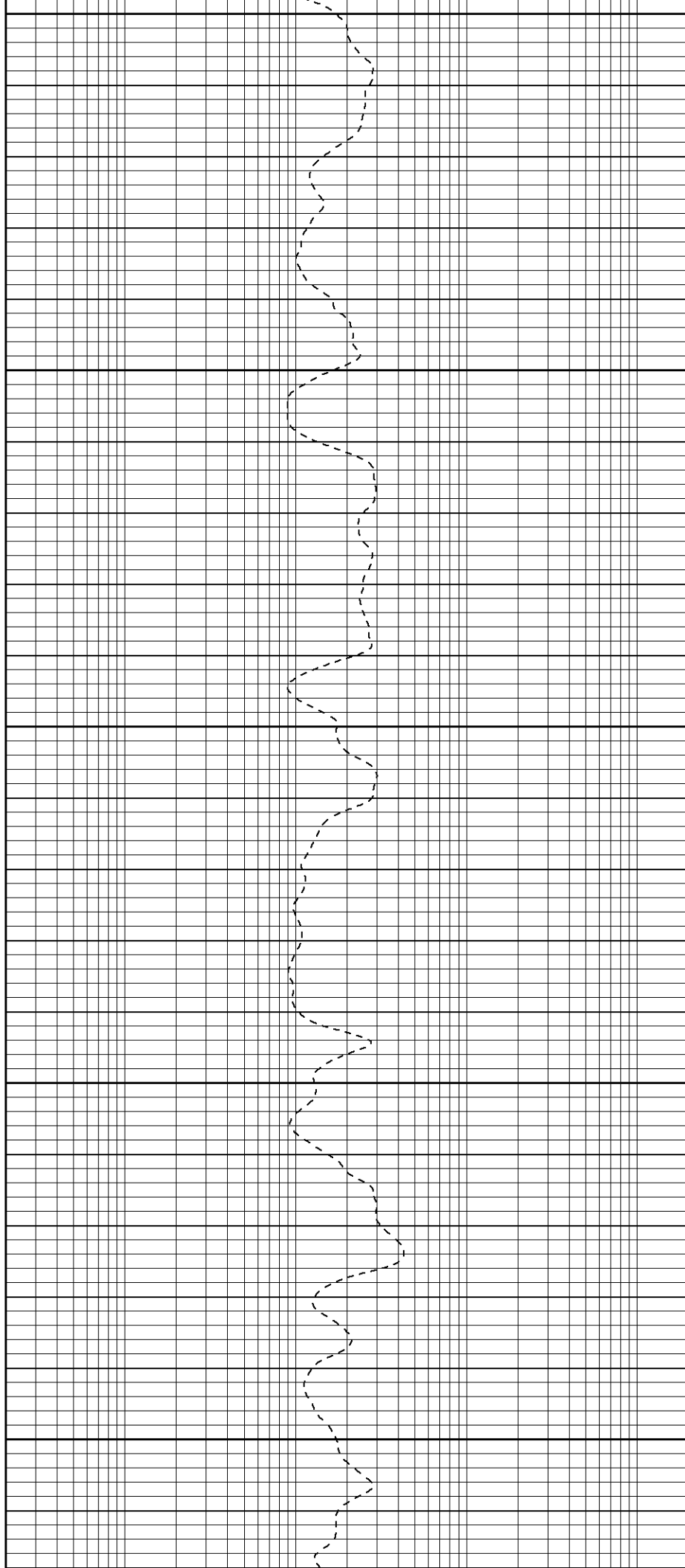
1850

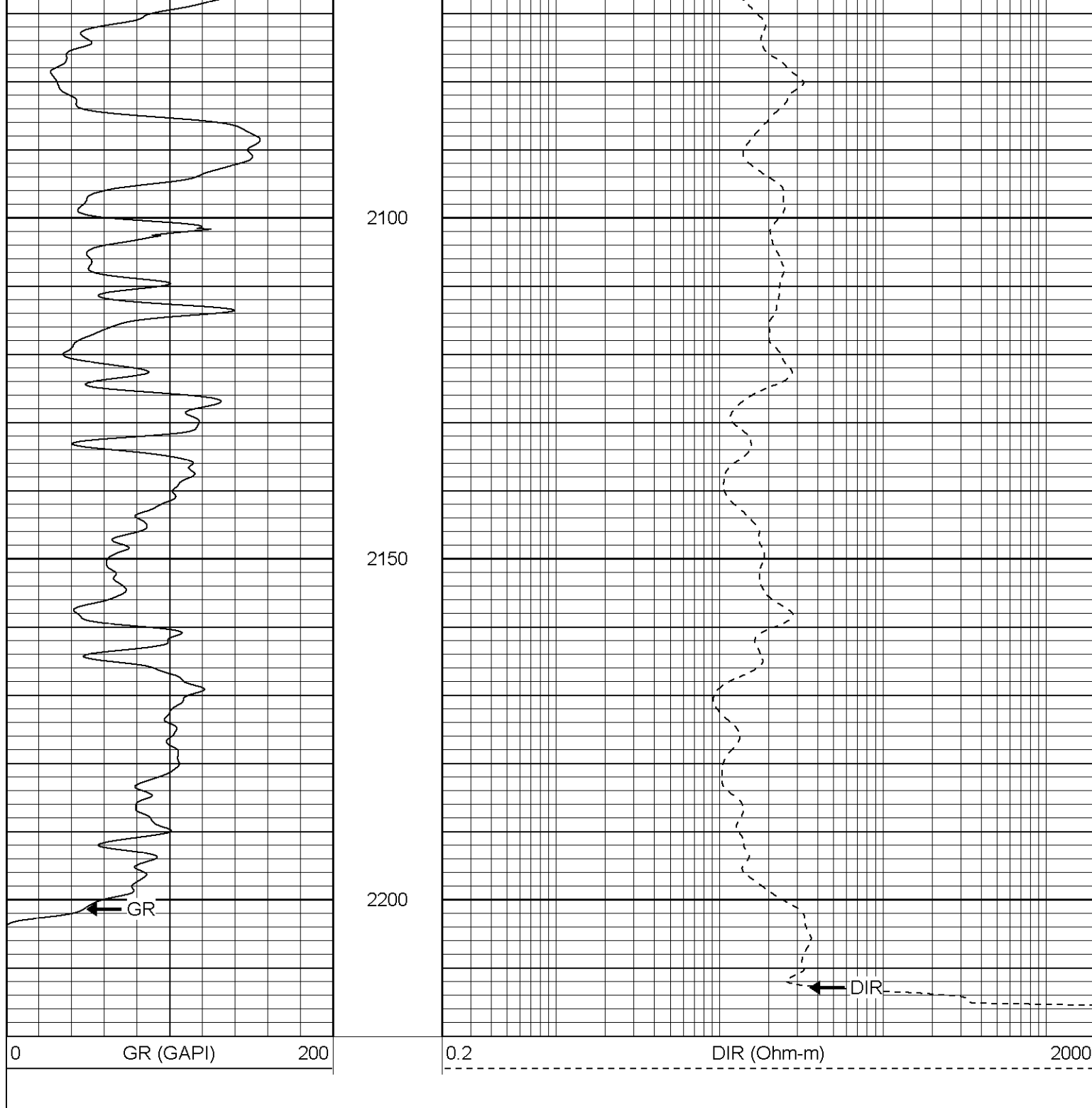
1900

1950

2000

2050





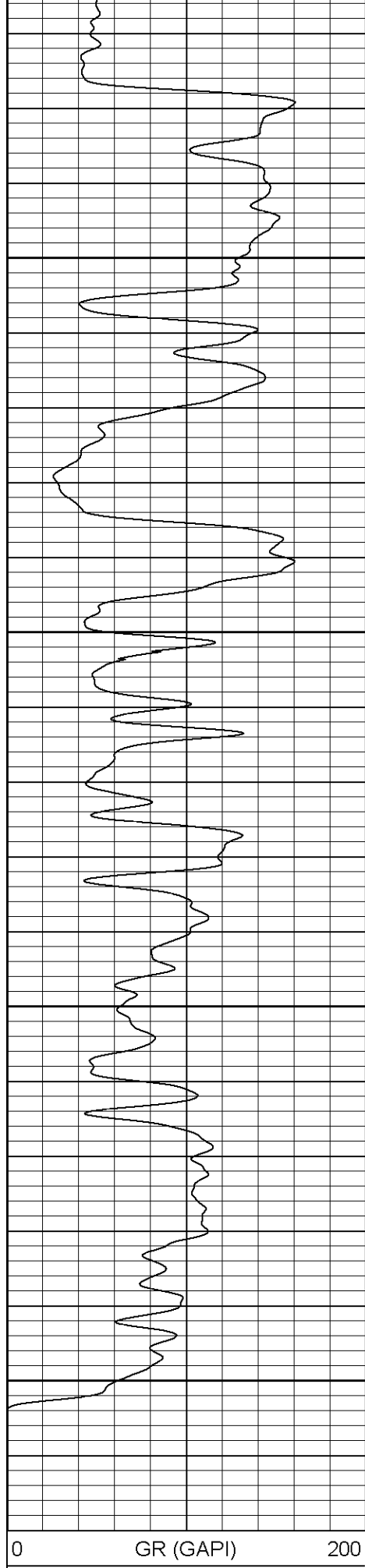
Patterson

Repeat Section

Database File: wranglertr.db
Dataset Pathname: pass1.1
Presentation Format: iel
Dataset Creation: Wed Oct 19 17:02:11 2005 by Calc Warrior 7.0 STD Ope
Charted by: Depth in Feet scaled 1:240

0 GR (GAPI) 200

0.2 DIR (Ohm-m) 2000

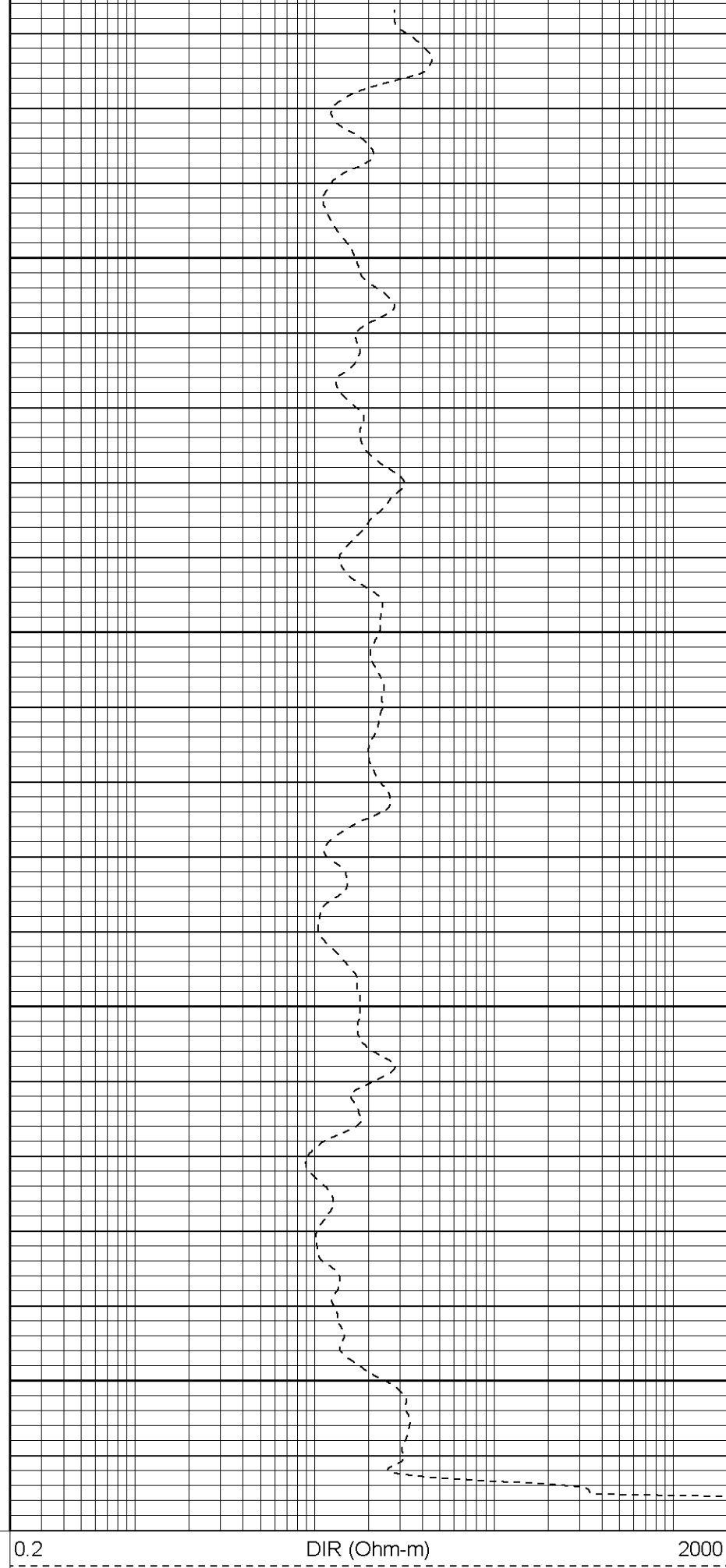


2050

2100

2150

2200



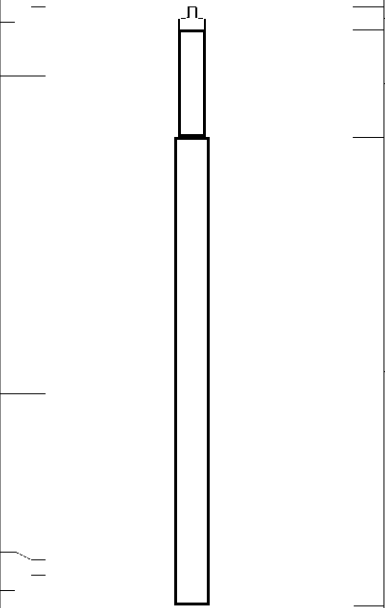
0.2

DIR (Ohm-m)

2000

Induction Tool Calibration Report				
Serial Number:		902		
Tool Model:		G		
Downhole Cal Performed:		Mon Oct 03 21:28:41 2005		
Surface Cal Performed:		Thu Sep 29 11:27:51 2005		
Surface Calibration:	Air	Loop		
Conductivity Reference:	0.000	450.000	mmho	
Conductivity Reading:	0.001	0.634	V	
Internal Reference:	Zero	Cal		
Conductivity Reference:	0.000	500.000	mmho	
Conductivity Reading:	0.002	0.633	V	
Downhole Calibration:	Internal Zero	Internal Cal		
Conductivity Reference:	0.004	449.717	mmho	
Conductivity Reading:	8.552	476.379	V	
Short Normal Reference:	0.000	17.000	Ohm-m	
Short Normal Reading:	0.011	0.207	V	
Results:	Gain	Offset		
Loop Conductivity:	711.236	-0.730		
Downhole Correction:	0.961	-8.217		
Short Normal Resistivity:	85.000	1.500		

Gamma Ray Calibration Report				
Serial Number:		2001		
Tool Model:		OH		
Performed:		Wed Oct 05 13:37:01 2005		
Calibrator Value:	1.0	GAPI		
Background Reading:	0.0	cps		
Calibrator Reading:	1.0	cps		
Sensitivity:	0.2000	GAPI/cps		

Sensor	Offset (ft)	Schematic	Description	Len (ft)	OD (in)	Wt (lb)
CHD	19.50		None	0.75	1.50	5.00
GR	17.25		GR-OH (2001) SIE	3.50	3.25	40.00
DIC	6.89		IEL-G (902)	15.25	4.00	178.00
SP	1.50					
SN	1.00					

Dataset:	/field/well/run1/_plots/_/jobs_/sil
Total Length:	19.50 ft
Total Weight:	223.00 lb
O.D.	4.00 in