


$$5'' = 1.00'$$

FEEET TVD

COMPANY : El Paso

WELL : C-23

FIELD : Vermejo Ranch

COUNTY :

STATE : Colorado

COUNTRY : US

API WELL NO. :

WELL LOCATION

Vermjo Ranch

COMPANY : El Paso
WELL : C-23
FIELD : Vermejo Ranch
COUNTY :
STATE : Colorado
COUNTRY : US
API NO. :

SEC

TWP:

RANGE:

OTHER SERVICES

DEPTH REF. :

ELEVATION : 7903.6 ft

Ground Level

WATER DEPTH :

BOREHOLE RECORD

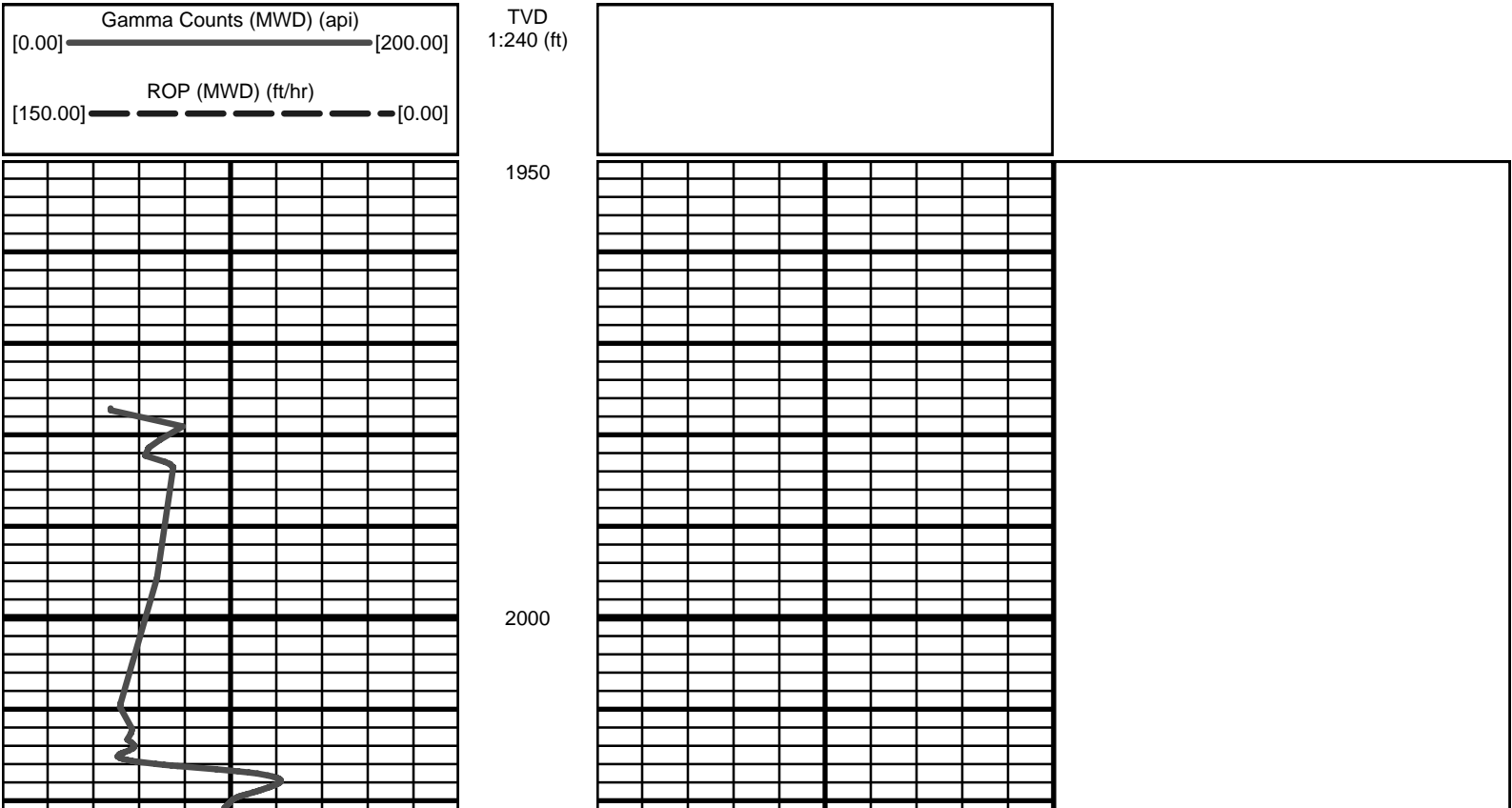
DEVIATION RECORD

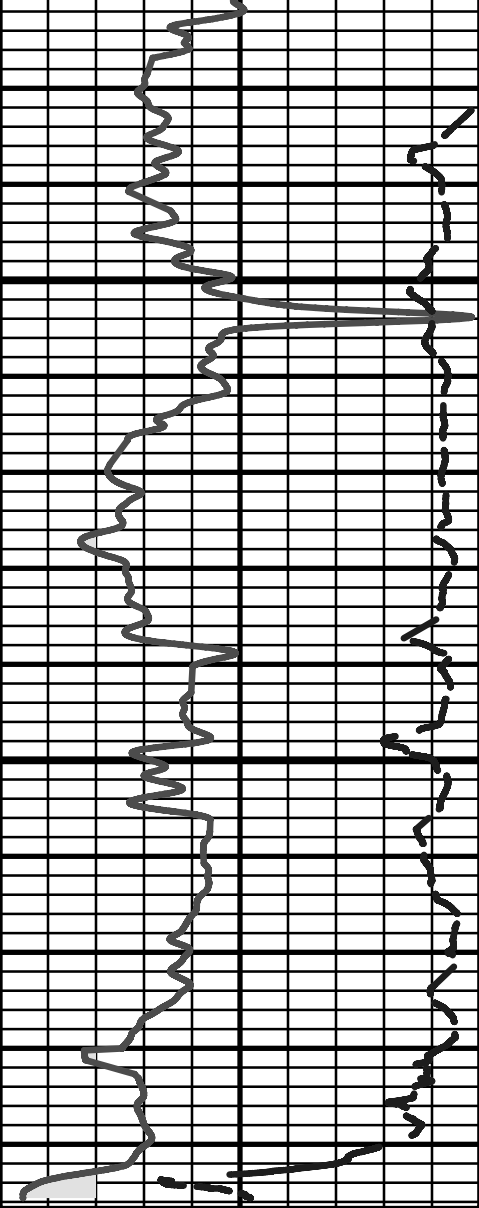
HOLE SIZE	in	FROM	ft	TO	ft	INCLINATION	deg	FROM	ft	TO	ft
4.75		2006		2215		5.48		2006		2215	
4.75		2215		3313		78.41		2215		3313	
4.75		3313				89.03		3313		4120	
CASING RECORD											
CASING SIZE	in	FROM	ft	TO	ft						
5.5		600		2002							
						DRILLING CO.: Ensign					
						RIG: 332					
						LMD UNIT NO.: 50					
						SPUD DATE: 12/14/05					
						LMD START DATE: 12/20/05					
						LMD END DATE: 12/25/05					
						DEPTH: 2006 ft					
						DEPTH: 4120 ft					
						TOTAL DEPTH: 4120 ft					

Run Data						
RUN NUMBER	1	2	3			
START DATE	12/20/05	12/21/05	12/24/05			
START TIME	07:45	21:13	02:30			
END DATE	12/21/05	12/24/05	12/25/05			
END TIME	16:54	01:00	01:00			
DEPTH IN (ft)	2006	2215	3313			
DEPTH OUT (ft)	2215	3313	1950			
LOG TOP (ft)	1950	1950	1950			
LOG BOTTOM (ft)	2215	3313	4120			
HOLE SIZE (in)	5.5	5.5	5.5			
MUD DATA @ (ft)						
MUD TYPE						
DENSITY (lb / gal)	8.6	8.6	8.6			
VISCOSITY (s / qt)	36	36	36			
pH	8.7	8.7	8.7			
FLUID LOSS (cm3 / 30)						
SALINITY (ppm)						
Rm (ohmm @ deg F)						
Rmf (ohmm @ deg F)						
MAX TEMP (deg F)						
Rm @ MAX TEMP (ohmm)						
LWD ENGINEER #1	Charlie Conn	Charlie Conn	Charlie Conn			
LWD ENGINEER #2	CW Ely	CW Ely	CW Ely			
LWD ENGINEER #3	Brian Kimbrough	Brian Kimbrough	Brian Kimbrough			

[illegible]

All interpretations are opinions based on inferences from electrical or other measurements and we cannot, and do not guarantee the accuracy or correctness of any interpretations, and we shall not, except in the case of gross or willful negligence on our part, be liable or responsible for any loss, costs, damages or expenses incurred or sustained by anyone resulting from any interpretation made by any of our officers, agents or employees. These interpretations are also subject to our general terms and conditions as set out in our current price schedule.





2050

2100

TVD
1:240 (ft)

