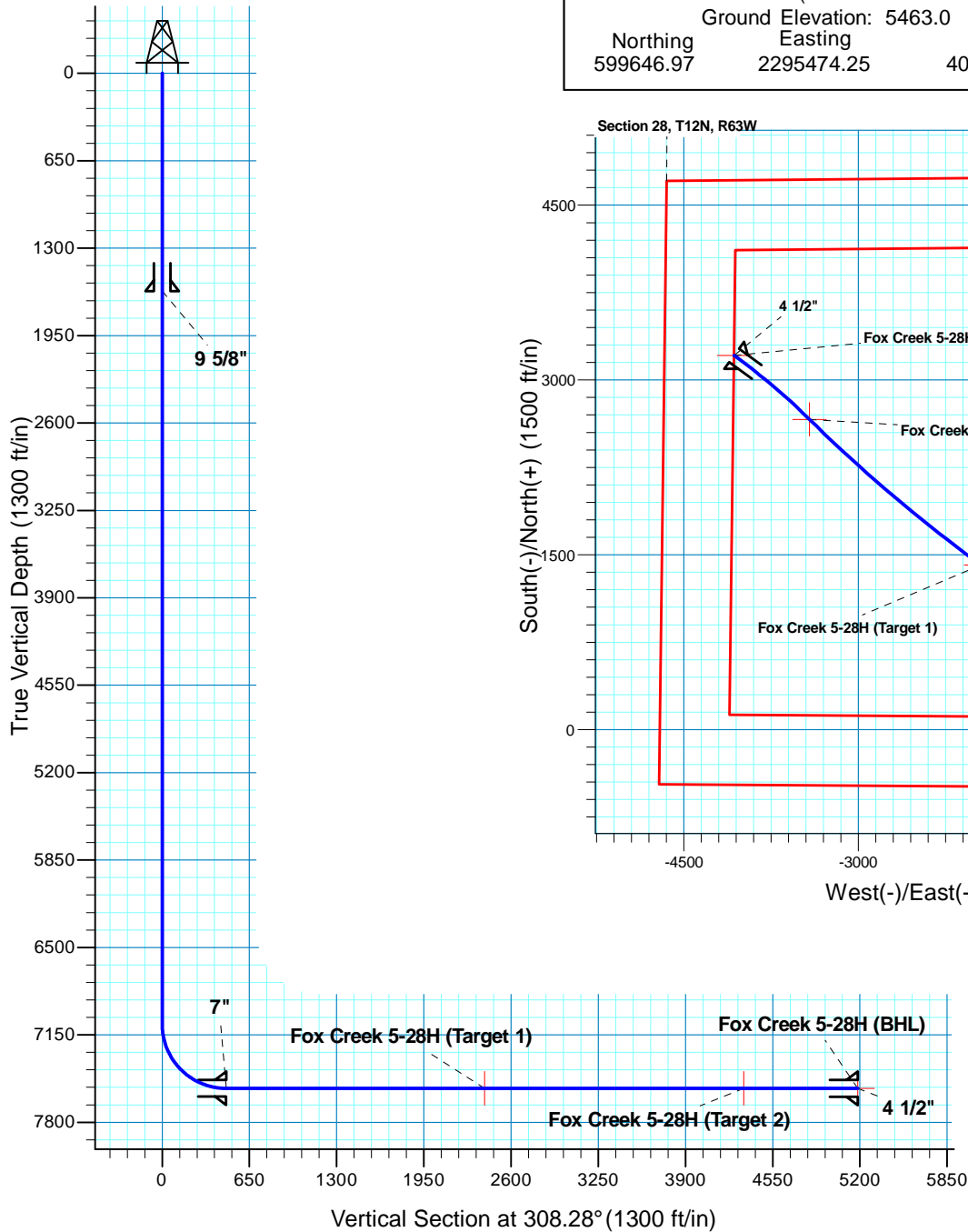


Fox Creek 5-28H

Section 28 T12N R63W

Weld County, CO

Surface Location			
NAD 1927 (NADCON CONUS) Colorado North 501			
Ground Elevation: 5463.0 RIG @ 5488.0ft (TBD)			
Northing	Easting	Latitude	Longitude
599646.97	2295474.25	40° 58' 28.290 N	104° 25' 48.090 W



T M

Azimuths to True North
Magnetic North: 8.88°

Magnetic Field
Strength: 53626.3snT
Dip Angle: 67.63°
Date: 1/21/2010
Model: IGRF200510

Project: DJ - Hereford Ranch
Site: Fox Creek 05-28H
Well: Fox Creek 5-28H
Plan: APD

SECTION DETAILS

Sec	MD	Inc	Azi	TVD	+N/-S	+E/-W	DLeg	TFace	VSec	Target
1	0.0	0.00	0.00	0.0	0.0	0.0	0.00	0.00	0.0	
2	7070.5	0.00	0.00	7070.5	0.0	0.0	0.00	0.00	0.0	
3	7820.5	90.00	306.00	7548.0	280.6	-386.3	12.00	306.00	477.1	
4	9748.1	90.00	306.00	7548.0	1413.6	-1945.7	0.00	0.00	2403.1	Fox Creek 5-28H (Target 1)
5	11681.7	90.00	314.53	7548.0	2662.3	-3419.8	0.44	90.00	4333.8	Fox Creek 5-28H (Target 2)
6	12531.7	90.00	305.93	7548.0	3210.7	-4068.1	1.01	-90.00	5182.5	Fox Creek 5-28H (BHL)

TARGET DETAILS

Name	TVD	+N/-S	+E/-W	Northing	Easting	Latitude	Longitude	Shape
Fox Creek 5-28H (BHL)	7548.0	3210.7	-4068.1	602808.33	2291367.71	40° 59' 0.010 N	104° 26' 41.129 W	Point
Fox Creek 5-28H (Target 1)	7548.0	1413.6	-1945.7	601037.01	2293511.65	40° 58' 42.256 N	104° 26' 13.455 W	Point
Fox Creek 5-28H (Target 2)	7548.0	2662.3	-3419.8	602267.76	2292022.57	40° 58' 54.592 N	104° 26' 32.676 W	Point