

EOG RESOURCES, INC.

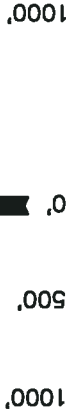
Well location, FOX CREEK #05-28H, located as shown in the SE 1/4 SE 1/4 of Section 28, T12N, R63W, 6th P.M., Weld County, Colorado.

BASIS OF ELEVATION

SPOT ELEVATION AT THE NORTHEAST CORNER OF SECTION 1, T11N, R63W, 6th P.M. TAKEN FROM THE HEREFORD, QUADRANGLE, COLORADO, WELD COUNTY, 7.5 MINUTE QUAD (TOPOGRAPHIC MAP) PUBLISHED BY THE UNITED STATES DEPARTMENT OF THE INTERIOR, GEOLOGICAL SURVEY. SAID ELEVATION IS MARKED AS BEING 5352 FEET.

BASIS OF BEARINGS

BASIS OF BEARINGS IS A G.P.S. OBSERVATION.



SCALE

CERTIFICATE

THIS IS TO CERTIFY THAT THE ABOVE PLAT WAS PREPARED FROM FIELD NOTES OF ACTUAL SURVEYS MADE BY ME OR UNDER MY SUPERVISION AND THAT THE SAME ARE TRUE AND CORRECT TO THE BEST OF MY KNOWLEDGE AND BELIEF.

REGISTERED LAND SURVEYOR
REGISTRATION NO. 17492
STATE OF COLORADO

UNTAH ENGINEERING & LAND SURVEYING

85 SOUTH 200 EAST - VERNAL, UTAH 84078
(436) 789-1017

SCALE 1" = 1000'
DATE SURVEYED: 01-05-10
DATE DRAWN: 01-11-10

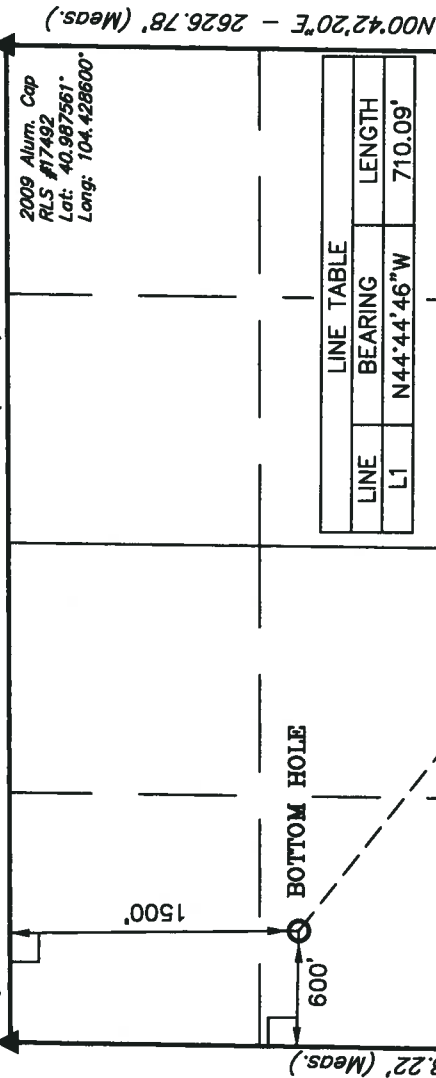
PARTY G.S. C.R. D.R.B. REFERENCES G.L.O. PLAT

WEATHER COLD
FILE EOG RESOURCES, INC.

T12N, R63W, 6th P.M.

S89°27'58"W - 5186.05' (Meas.)

2009 Alum. Cap
RLS #17492
Lat: 40.987417°
Long: 104.447378°



28

NOTE:
SEE ADDENDUM TO LEGAL PLAT FOR
EXISTING IMPROVEMENTS WITHIN 400'
OF THE PROPOSED WELL DISTURBANCE.

FOX CREEK #05-28H

Elev. Ungraded Ground = 5463'

2009 Alum. Cap
RLS #17492
Lat: 40.973211°
Long: 104.447603°

N89°37'06"W - 5214.05' (Meas.)

2008 Alum. Cap
0.1' High, E-W-S
Fence Corner,
PLS #36073
Lat: 40.973125°
Long: 104.428728°

NAD 83 (TARGET BOTTOM HOLE)	NAD 83 (SURFACE LOCATION)
LATITUDE = 40°58'58.94" (40.983317)	LATITUDE = 40°58'28.23" (40.974508)
LONGITUDE = 104°26'42.98" (104.445272)	LONGITUDE = 104°25'49.94" (104.430539)
NAD 27 (TARGET BOTTOM HOLE)	NAD 27 (SURFACE LOCATION)
LATITUDE = 40°59'00.01" (40.983336)	LATITUDE = 40°58'28.29" (40.974525)
LONGITUDE = 104°26'41.13" (104.444758)	LONGITUDE = 104°25'48.09" (104.430025)
STATE PLANE NAD 83 (COLORADO NORTH)	STATE PLANE NAD 83 (COLORADO NORTH)
TARGET BOTTOM HOLE: N: 1602810.363 E: 3291218.253	SURFACE LOCATION: N: 1599849.468 E: 3295324.642
STATE PLANE NAD 27 (COLORADO NORTH)	STATE PLANE NAD 27 (COLORADO NORTH)
TARGET BOTTOM HOLE: N: 602807.908 E: 2291367.819	SURFACE LOCATION: N: 599647.068 E: 2295474.174

LEGEND:

— = 90° SYMBOL

● = PROPOSED WELL HEAD.

▲ = SECTION CORNERS LOCATED.

PDOP = 2.1



EOG RESOURCES, INC.
ADDENDUM TO LEGAL PLAT FOR
FOX CREEK #05-28H
SECTION 28, T12N, R63W, 6th P.M.
501' FSL 501' FEL



SCALE: 1" = 200'
DATE: 01-11-10
DRAWN BY: D.R.B.

