

BRAN-DEX		WIRELINE SERVICES	
CEMENT BOND		GAMMA RAY	
COLLAR CORRELATION LOG			
Company K.P. KAUFFMAN COMPANY, INC.		Well CAMENISCH 8 - 32	
Field WATTENBERG		County WELD	
State COLORADO		Location:	
County WELD		API # : 06 - 123 - 24591 - 00	
Field WATTENBERG		Other Services	
Well CAMENISCH 8 - 32		Location:	
Company K.P. KAUFFMAN COMPANY, INC.		API # : 06 - 123 - 24591 - 00	
Permanent Datum		Elevation 4993	
Log Measured From		K.B. 5005	
Drilling Measured From		D.F. 5004	
KELLY BUSHING		G.L. 4993	
GROUND LEVEL		Elevation	
SEC 32 TWP 4 N RGE 67 W		NONE	
NW / NE		Other Services	
Date 21 - MARCH - 2007		Run Number ONE	
Depth Driller 7960		Depth Logger 7900	
Bottom Logged Interval 7893		Top Log Interval 3600	
Open Hole Size 7 7/8		Type Fluid WATER	
Density / Viscosity ---		Max. Recorded Temp. NOT RECORDED	
Estimated Cement Top 3770		Time Well Ready ---	
Time Logger on Bottom ---		Equipment Number 455/MAST/WHITE	
Location		Recorded By HAYES	
Witnessed By MR. RICK OHLEMEIER		Tubing Record	
Run Number		To	
Bit		Size	
From		Weight	
From		To	
Size		Weight	
To		Bottom	
Wgt/Ft		Top	
Size		SURFACE	
4.5		11.6	
Production String		TOTAL DEPTH	
Prot. String			
Surface String			
Casing Record			
Liner			

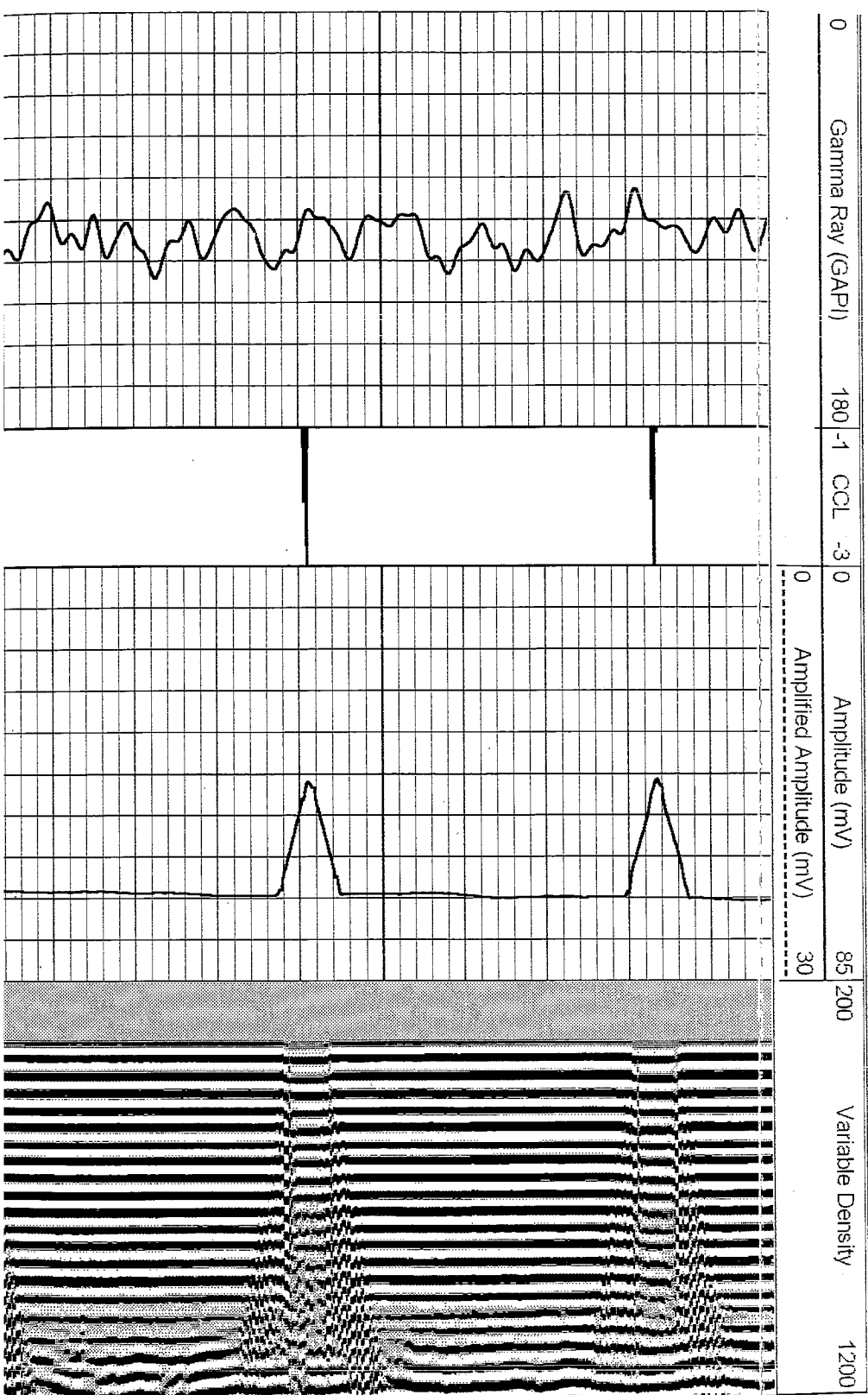
<<< Fold Here >>>

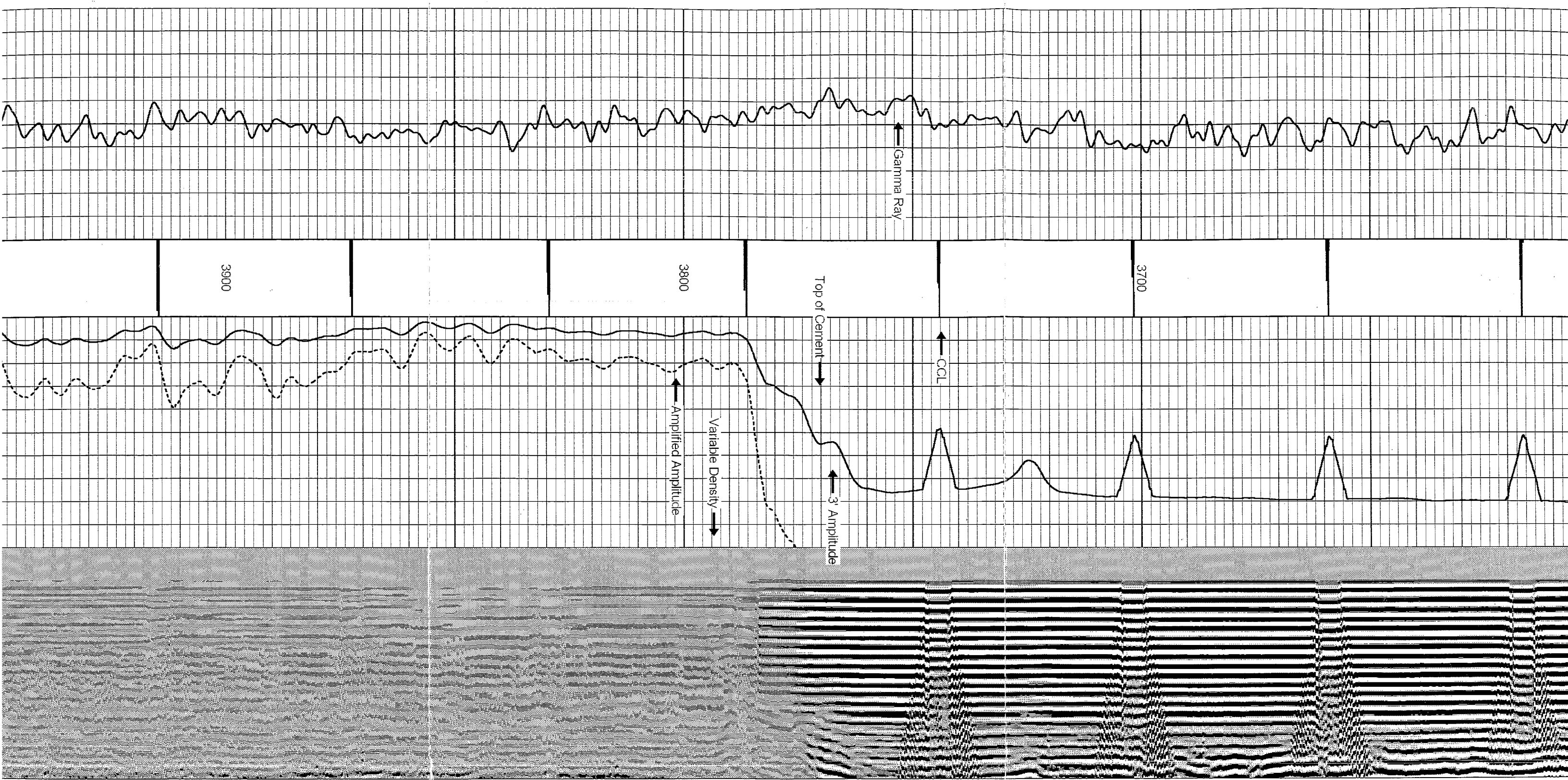
All interpretations are opinions based on inferences from electrical or other measurements and we cannot and do not guarantee the accuracy or correctness of any interpretation, and we shall not, except in the case of gross or willful negligence on our part, be liable or responsible for any loss, costs, damages, or expenses incurred or sustained by anyone resulting from any interpretation made by any of our officers, agents or employees. These interpretations are also subject to our general terms and conditions set out in our current Price Schedule.

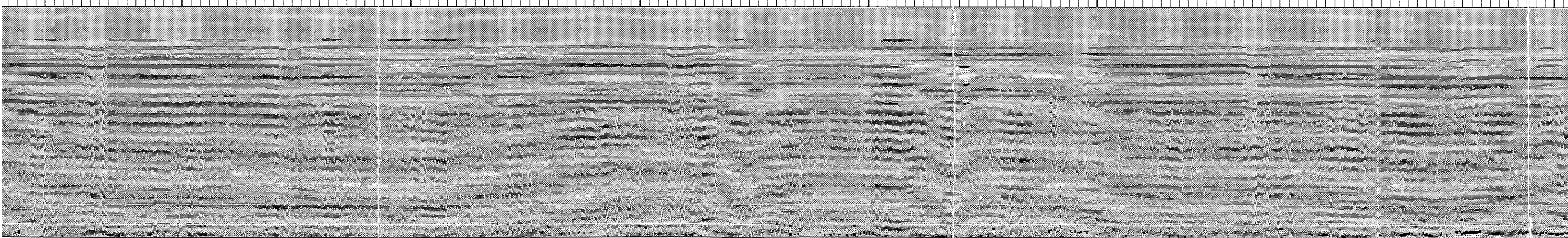
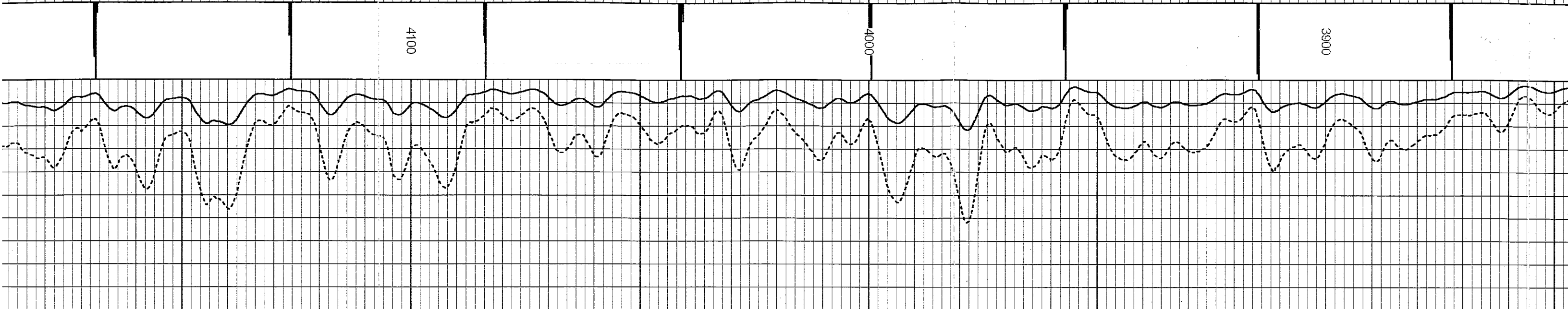
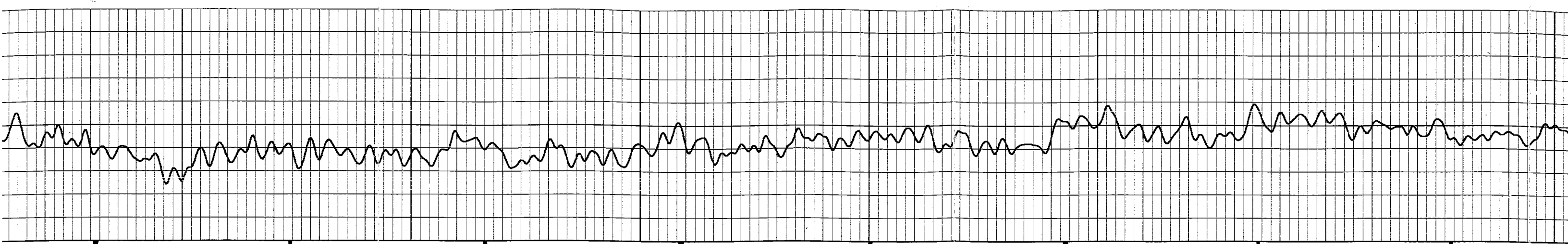
Comments

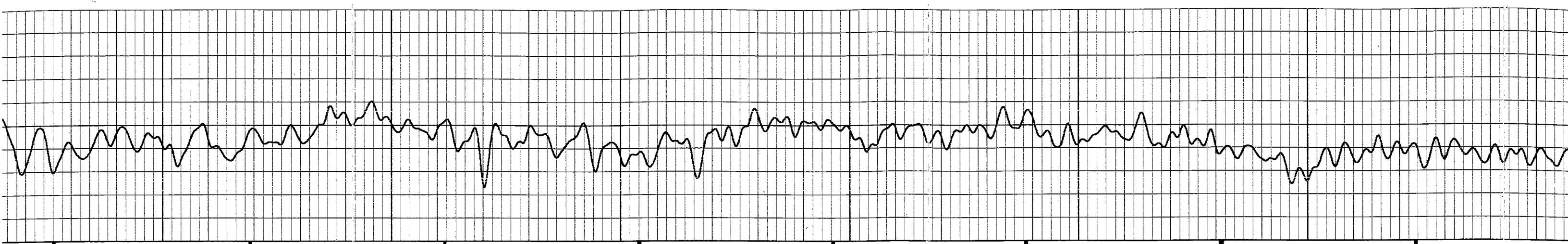
LOG CORRELATED TO DI - CD - CN LOG
DATED 2 - 23 - 2007
LOG SPLIT AT 5000
FOR CORRELATION PURPOSES

Database File: camerisch8-32.db
Dataset Pathname: pass2
Presentation Format: cbk
Dataset Creation: Wed Mar 21 09:52:04 2007 by Log Warrior 7.0 STD Cas
Charted by: Depth in Feet scaled 1:240

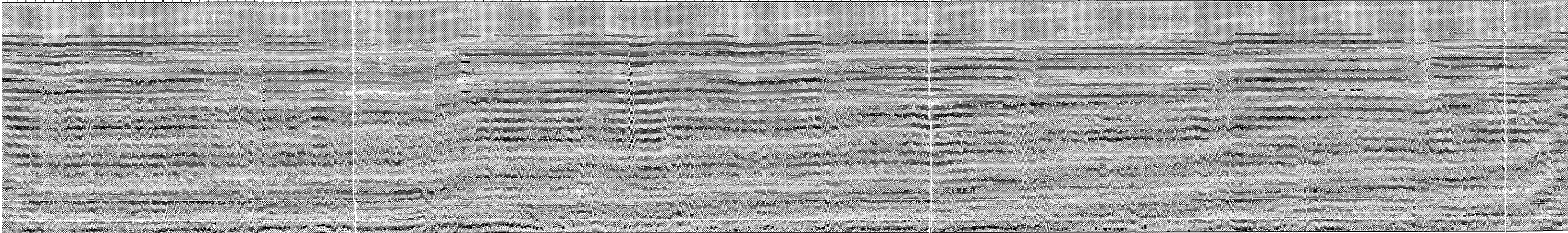
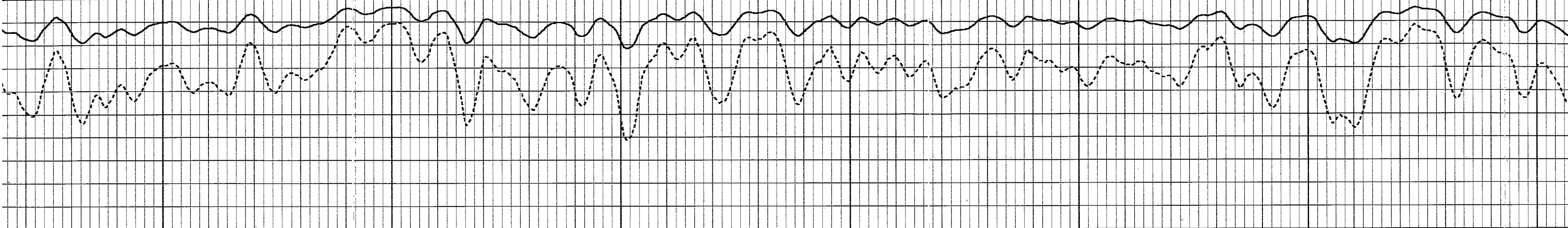


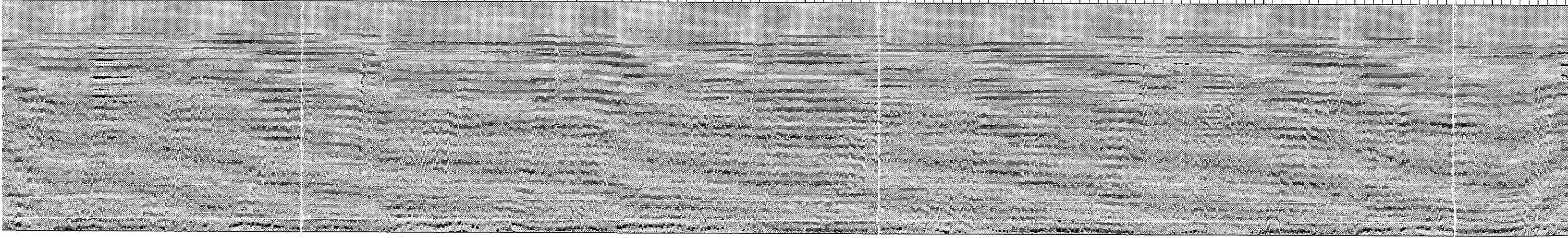
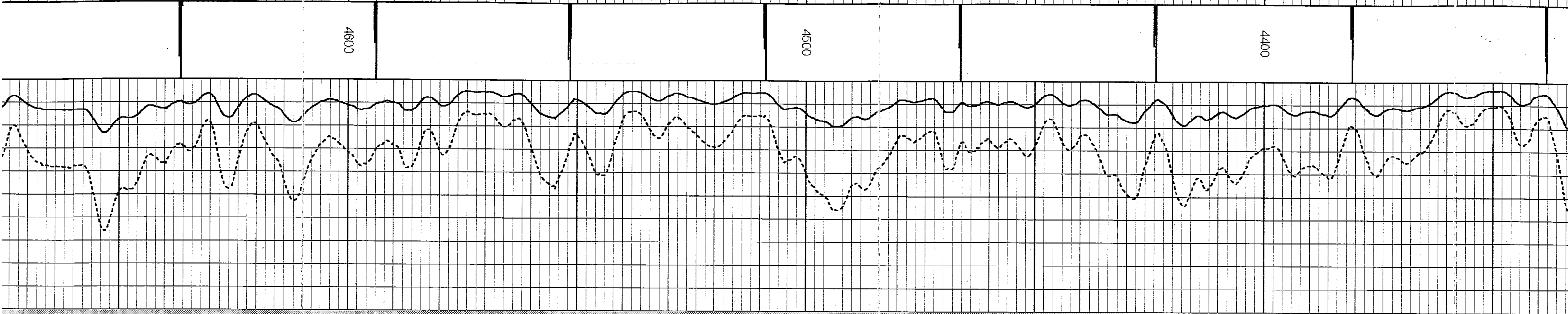
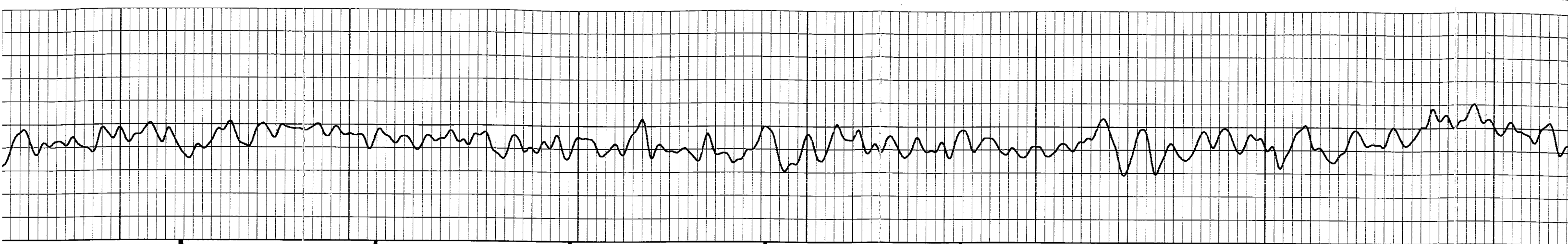


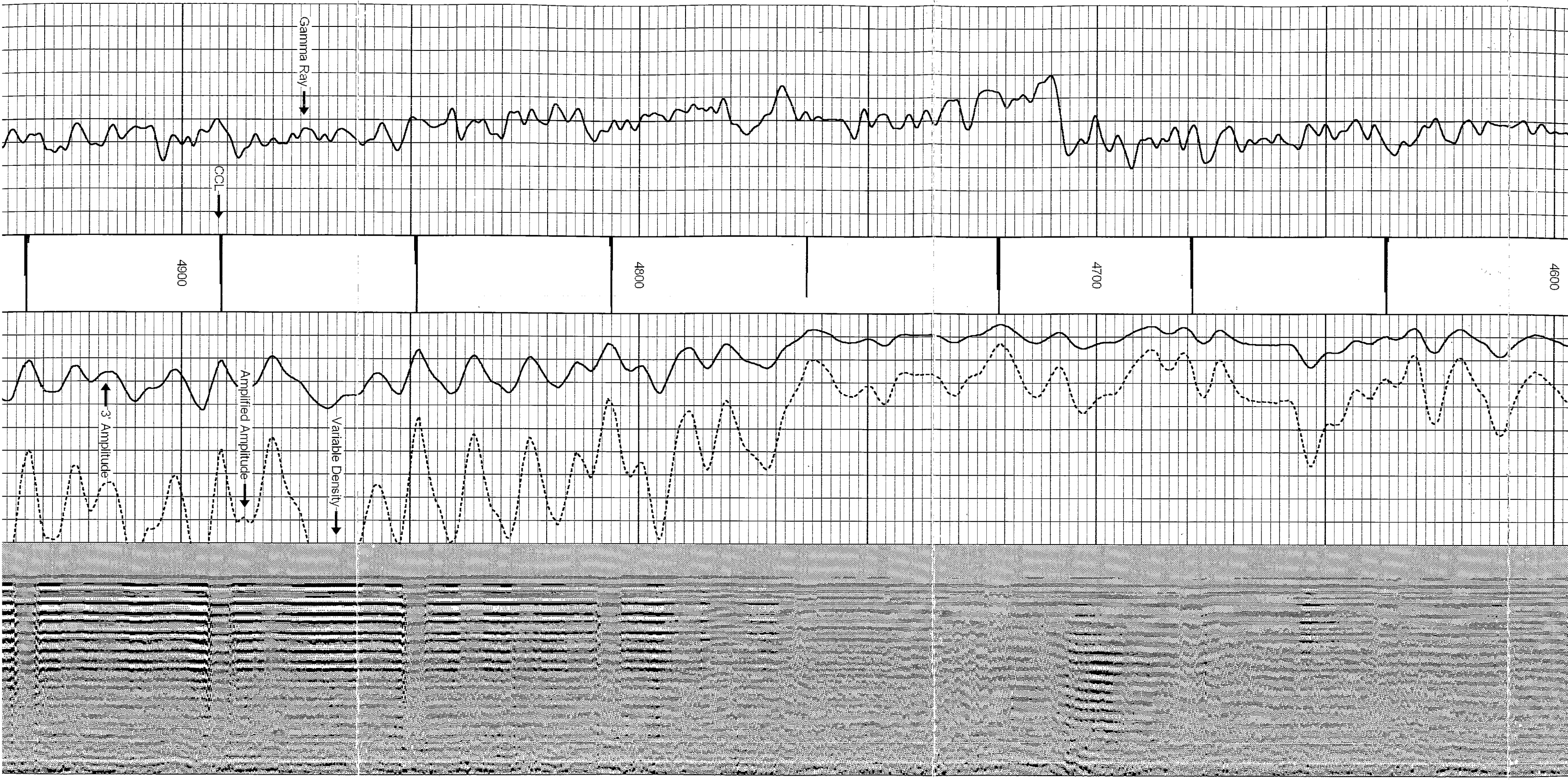


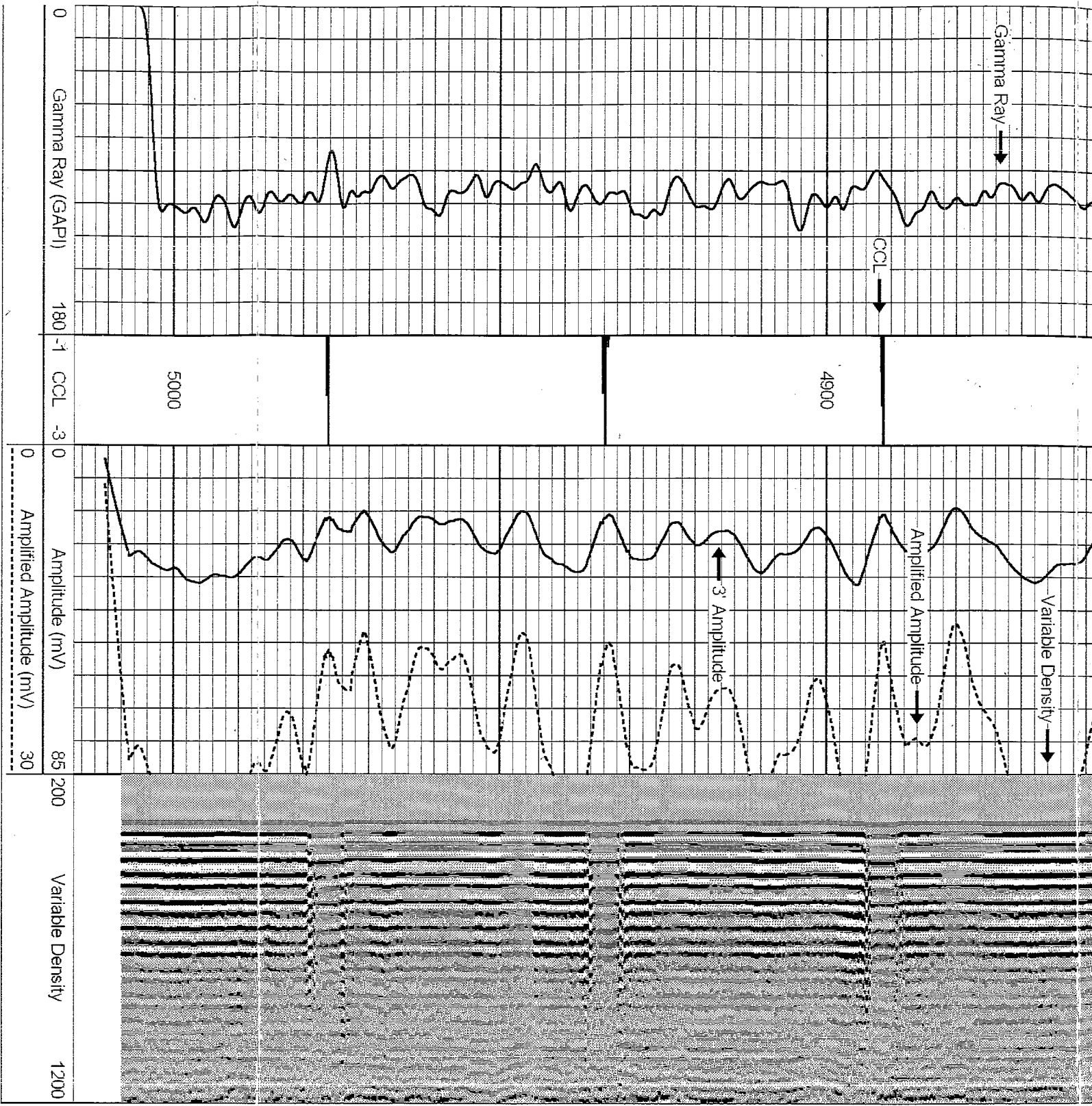


	4400		4300		4200		4100
--	------	--	------	--	------	--	------

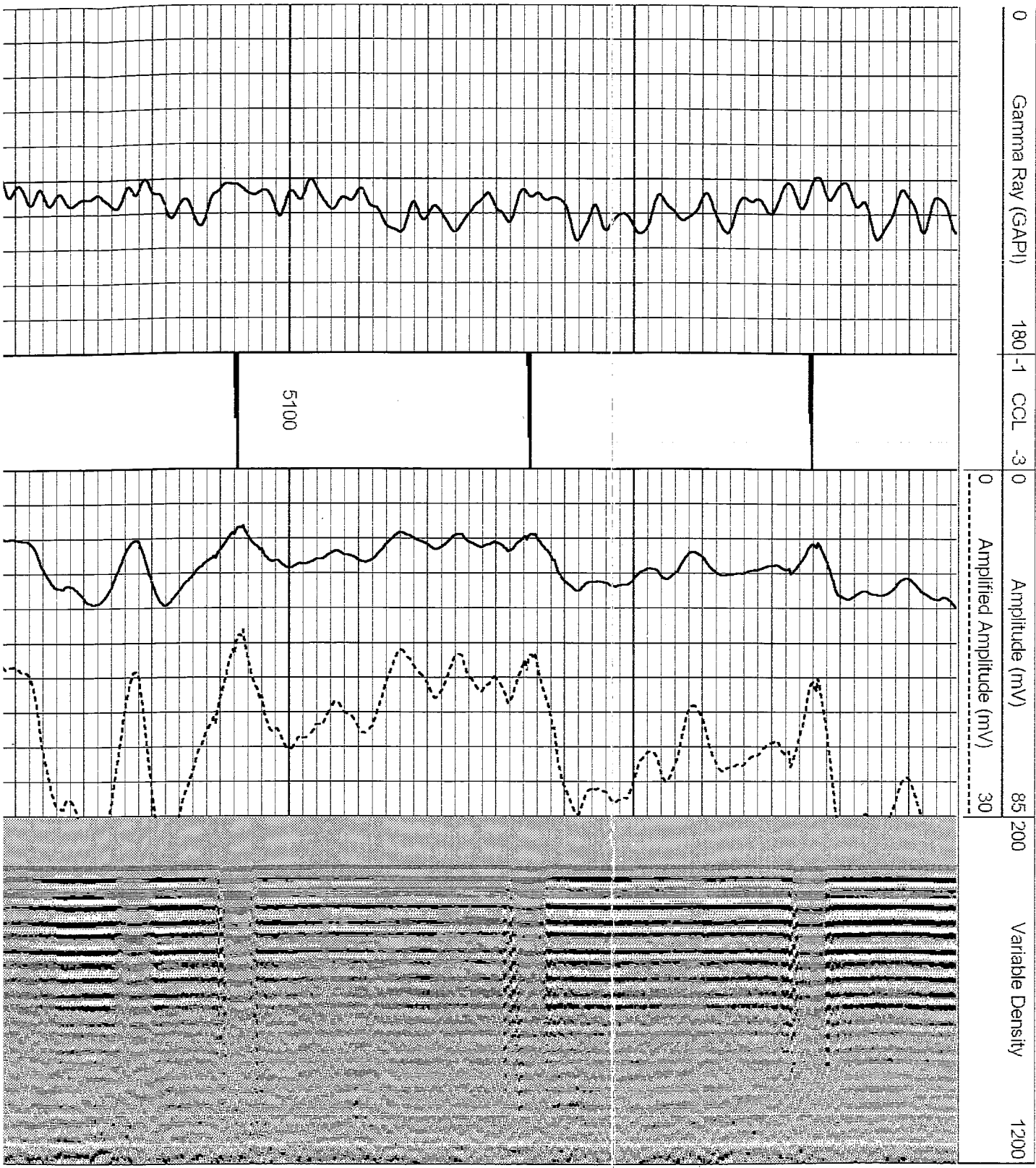


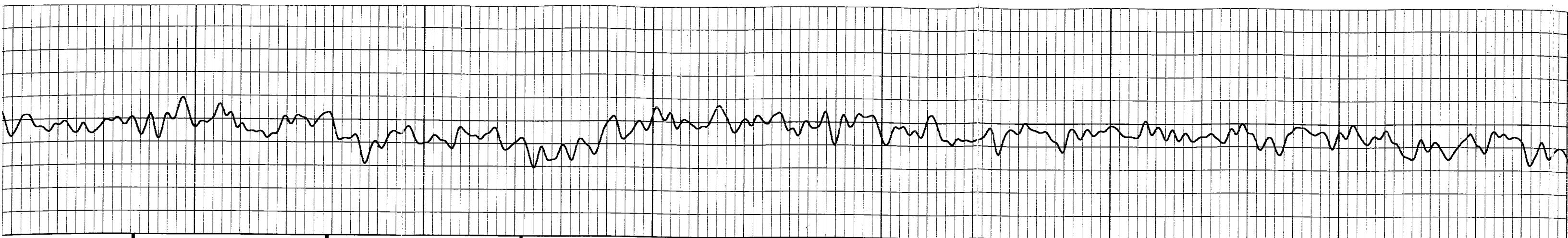




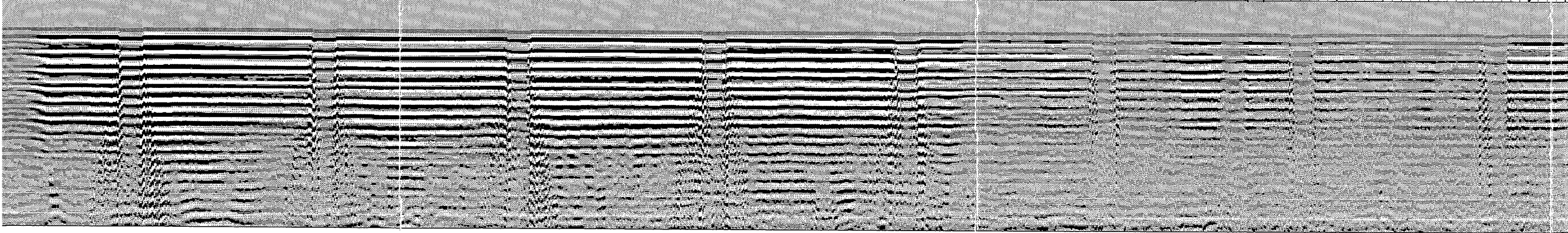
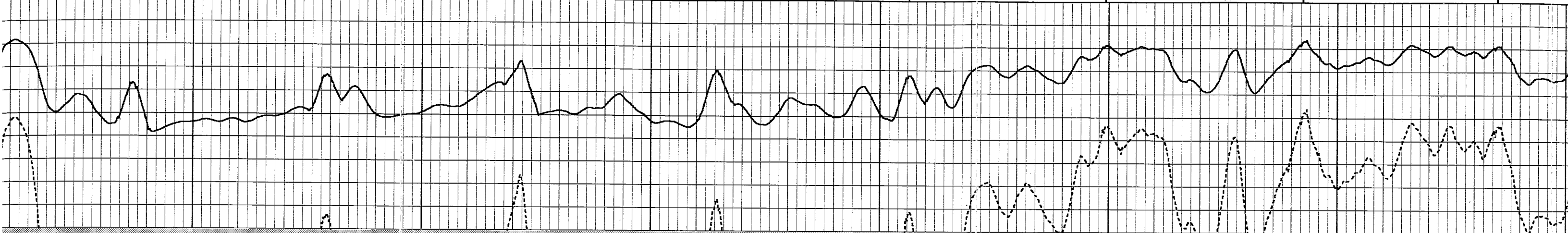


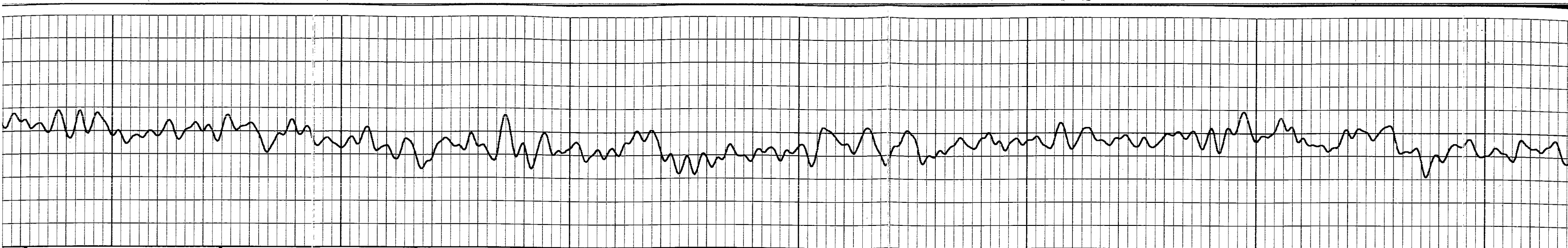
Database File: camerisch8-32.db
Dataset Pathname: pass1
Presentation Format: cbk
Dataset Creation: Wed Mar 21 08:58:14 2007 by Log Warrior 7.0 STD Cas
Charted by: Depth in Feet scaled 1:240



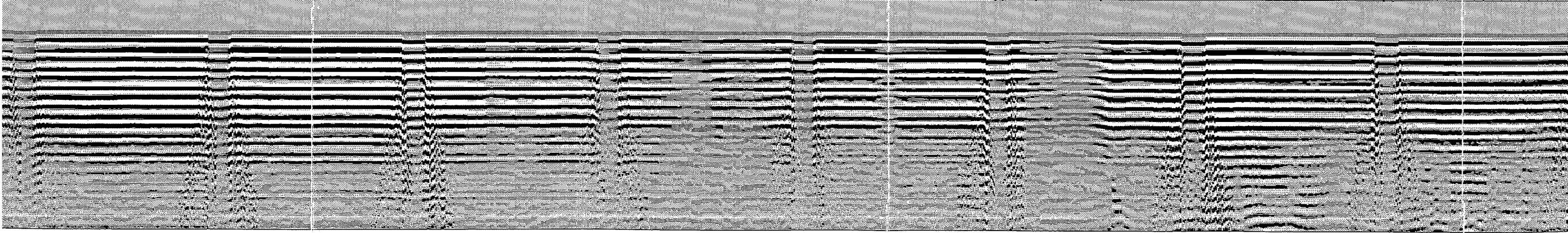
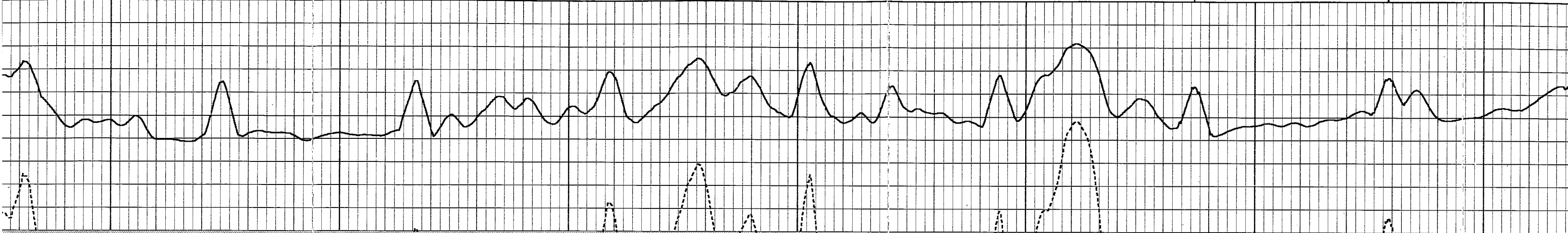


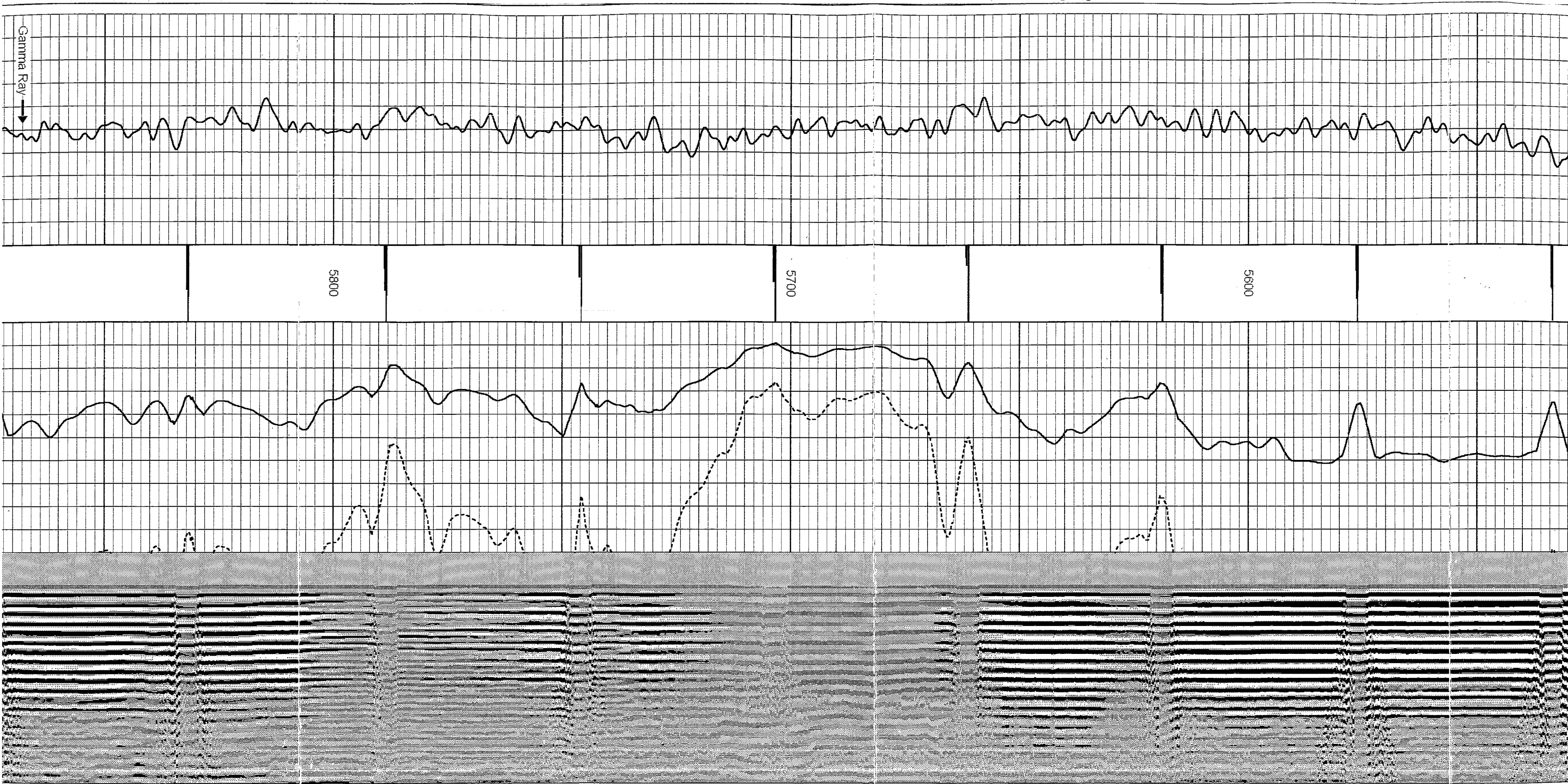
		5300		5200			5100	
--	--	------	--	------	--	--	------	--

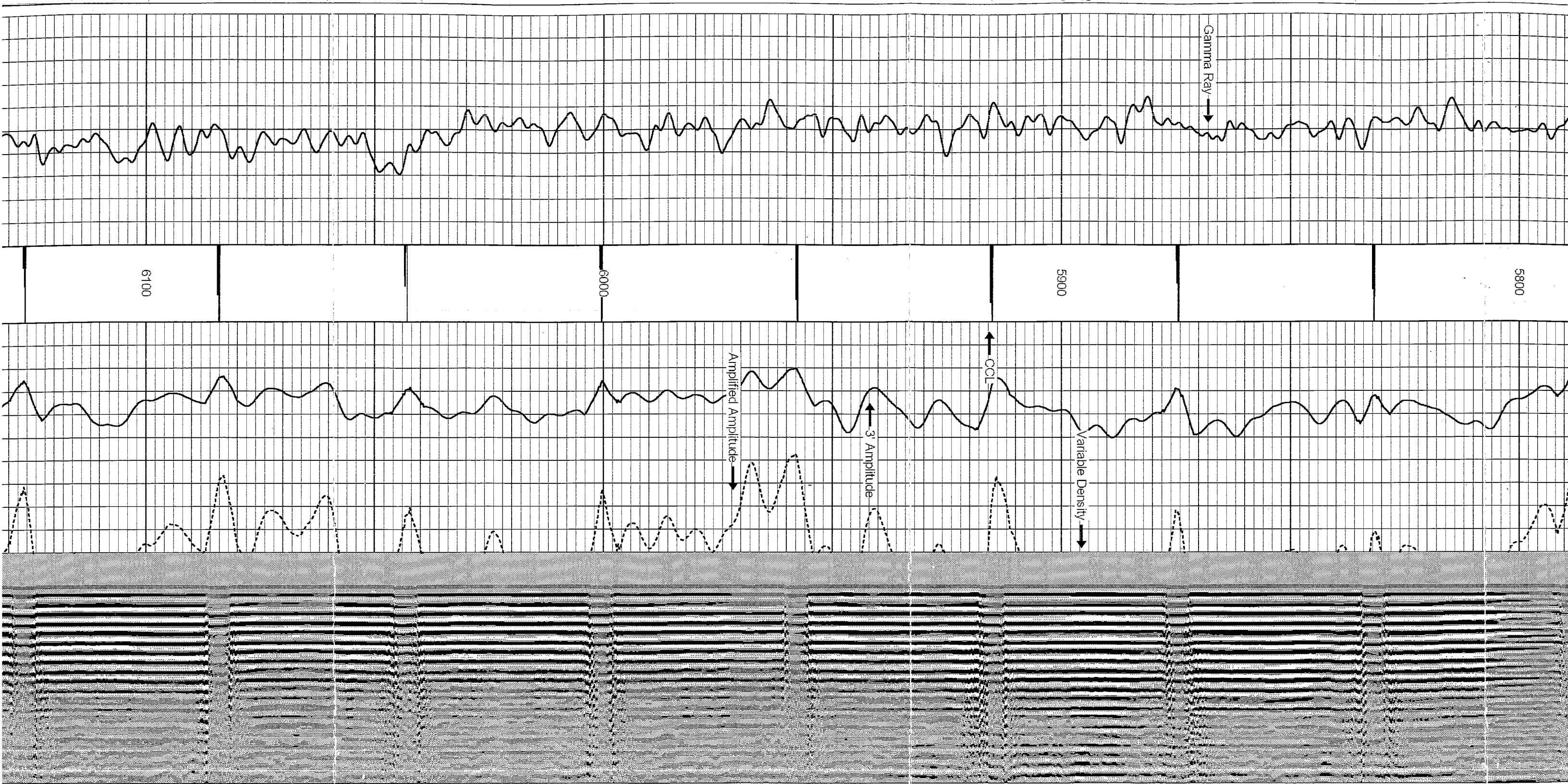


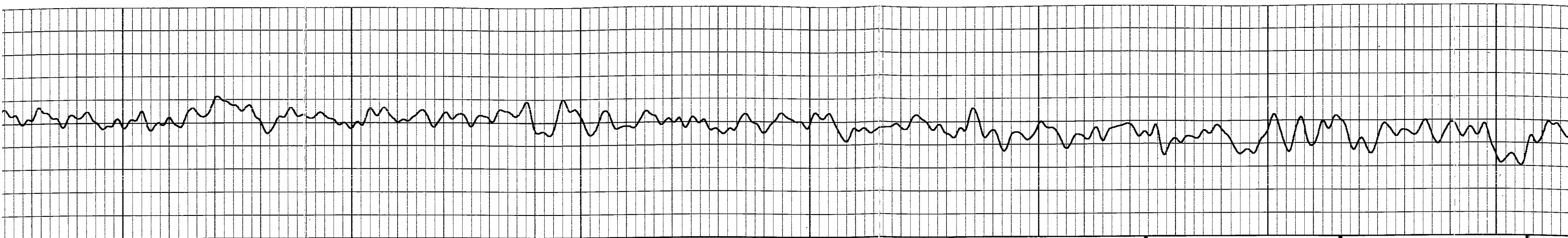


5600		5500			5400		5300
------	--	------	--	--	------	--	------

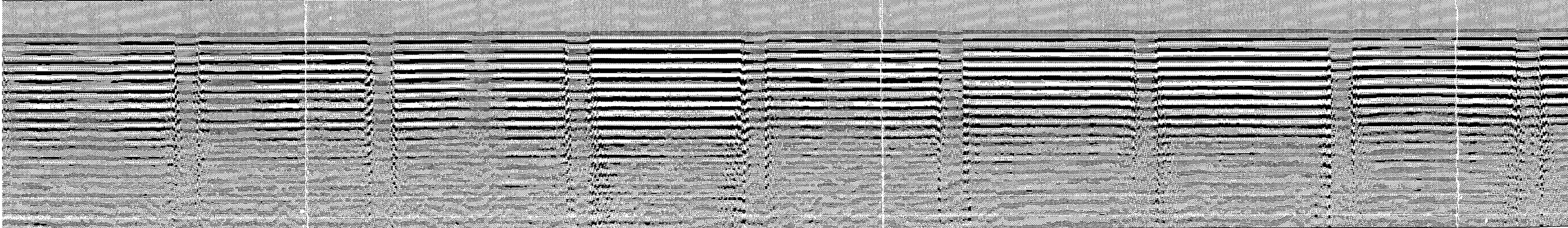
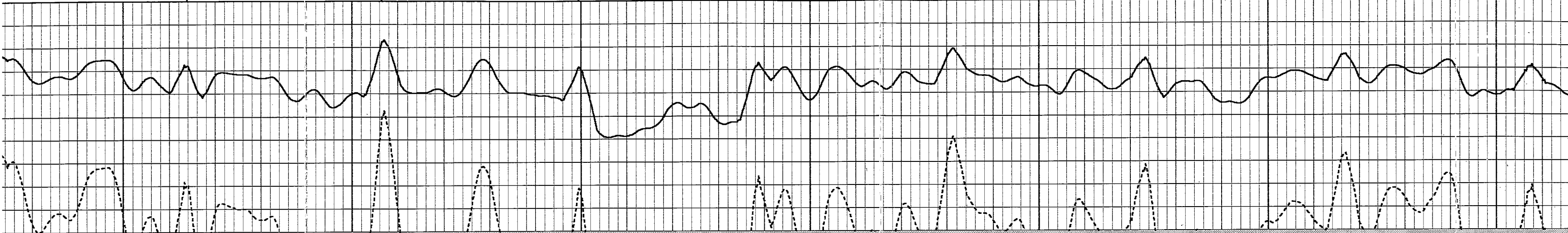


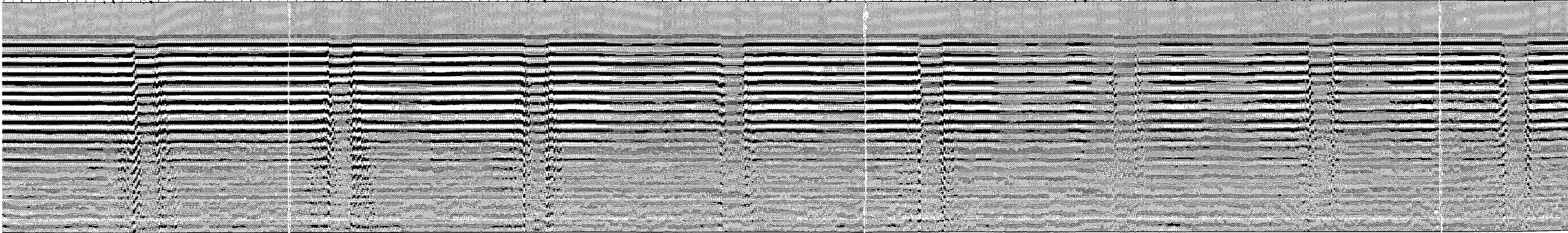
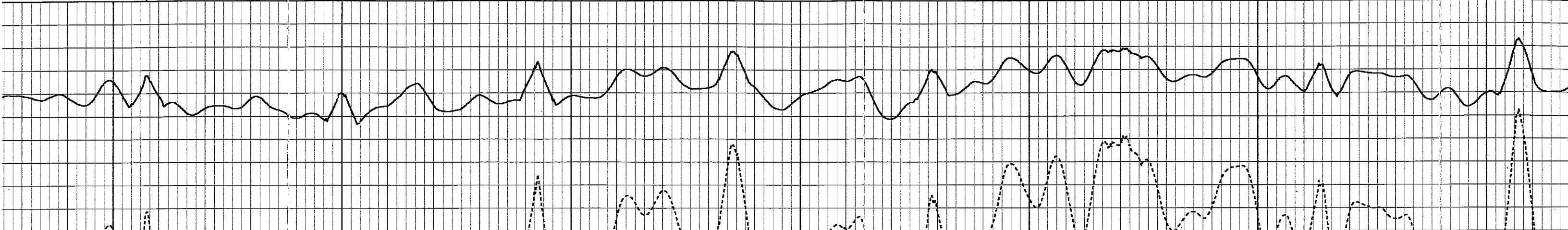
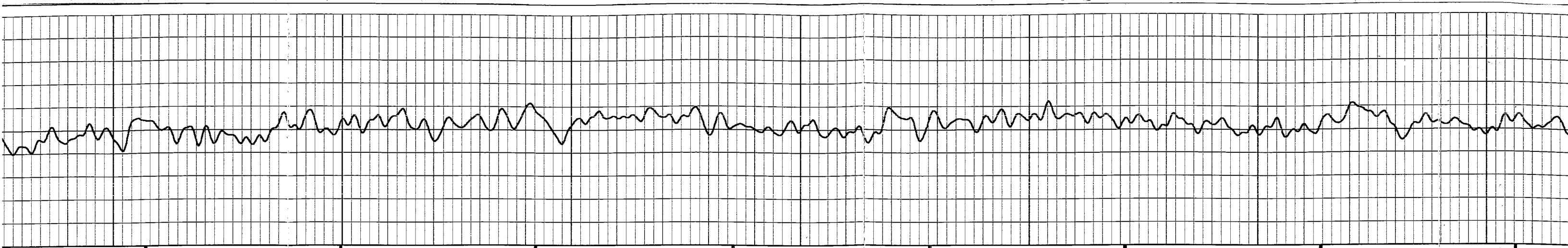






	6300		6200		6100	
--	------	--	------	--	------	--







6800

6700

6600

