



SUPERIOR
Black Lick, Pa.
Mercer, Pa.
Wooster, Oh.
Cleveland, Ok.
Trinidad, Co.

CEMENT BOND GAMMA RAY

Company XTO Energy Inc.
Well Apache Canyon 29-06
Field Purgatorie River
County Las Animas
State CO

Company XTO Energy Inc.
Well Apache Canyon 29-06
Field Purgatorie River
County Las Animas State CO

Location: API # : 05 071 09288 00

2381' FNL & 1699' FWL

SEC 29 TWP 34S RGE 67W

Permanent Datum Ground Level Elevation 8145'
Log Measured From Ground Level
Drilling Measured From Ground Level

Other Services
TEMP
Elevation
K.B. -----
D.F. -----
G.L. 8145'

Date				8/28/07		
Run Number				one		
Depth Driller				2780'		
Depth Logger				2622'		
Bottom Logged Interval				2618'		
Top Log Interval				Surf.		
Open Hole Size				7 7/8"		
Type Fluid				water		
Density / Viscosity				///		
Max. Recorded Temp.				132F		
Estimated Cement Top				Surf.		
Time Well Ready				ROA		
Time Logger on Bottom				1:20		
Equipment Number				0703		
Location				Trinidad		
Recorded By				Worley		
Witnessed By						
Borehole Record				Tubing Record		
Run Number	Bit	From	To	Size	Weight	From To
Casing Record	Size			Wgt/Ft	Top	Bottom
Surface String	8 5/8"				00	495'
Prot. String						
Production String	5 1/2"				00	NA
Liner						

<<< Fold Here >>>

All interpretations are opinions based on inferences from electrical or other measurements and we cannot and do not guarantee the accuracy or correctness of any interpretation, and we shall not, except in the case of gross or willful negligence on our part, be liable or responsible for any loss, costs, damages, or expenses incurred or sustained by anyone resulting from any interpretation made by any of our officers, agents or employees. These interpretations are also subject to our general terms and conditions set out in our current Price Schedule.

Comments

First Bosque entrance, left on Little Bingham, at top take second right,
first right, drive thru on location, first left to location.



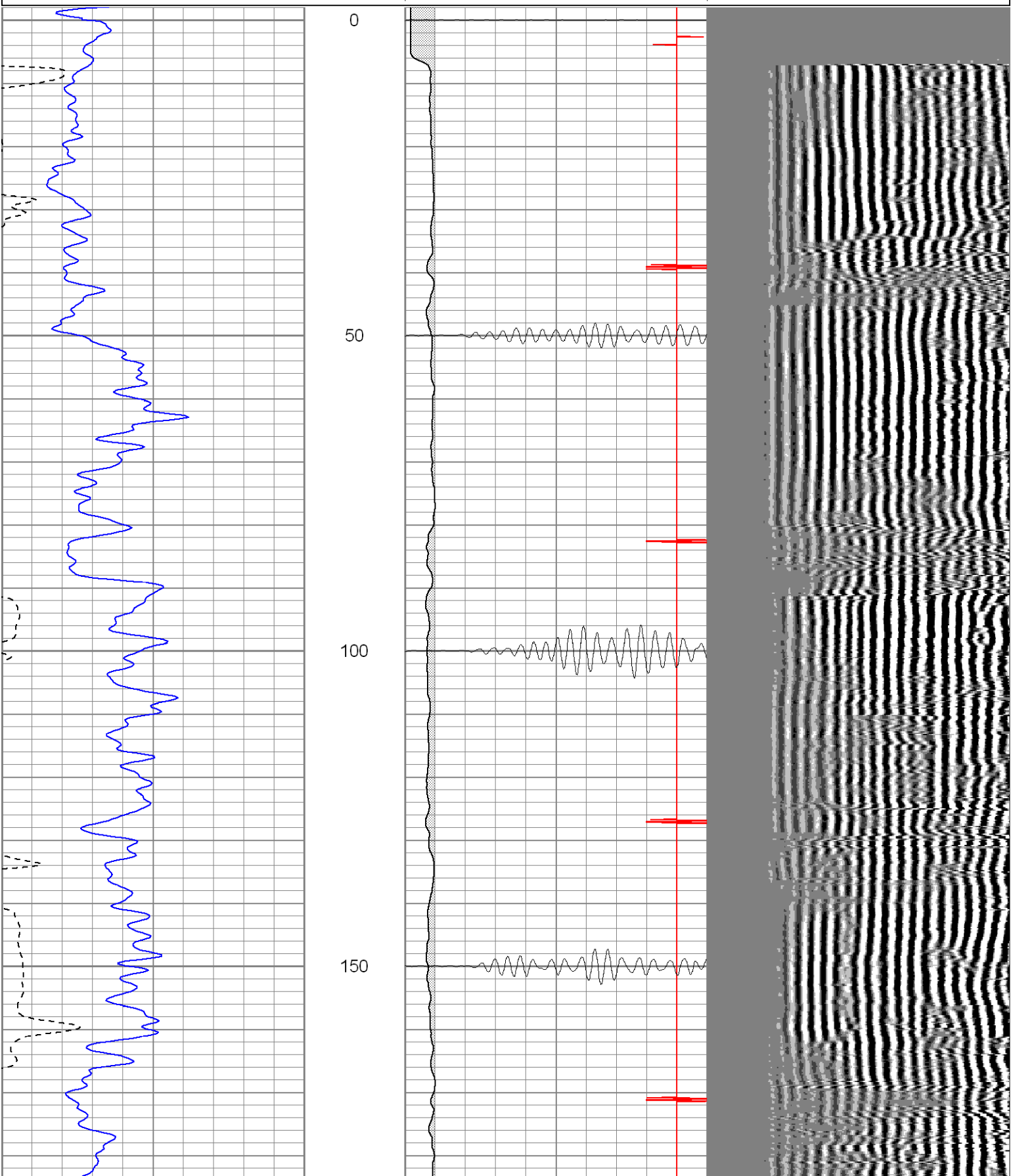
SUPERIOR

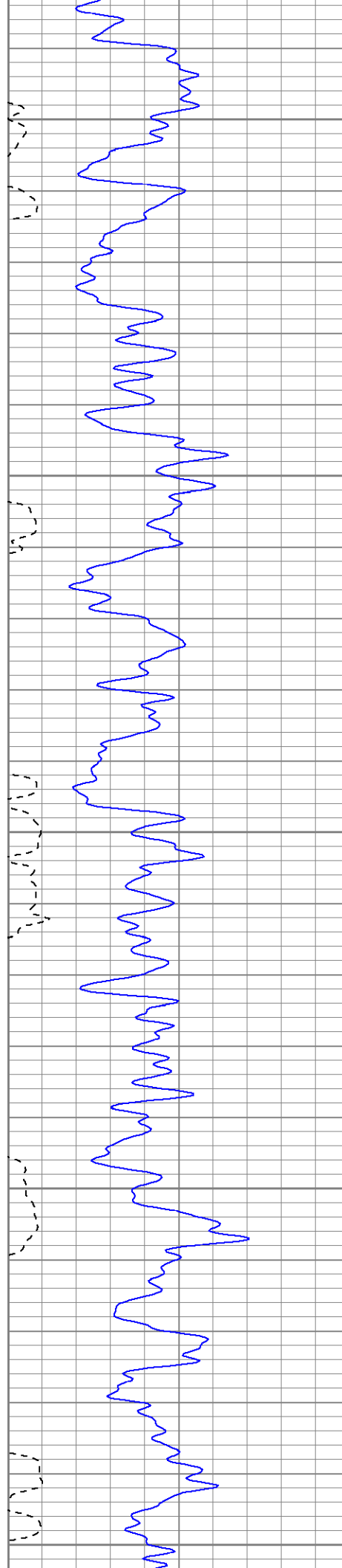
Black Lick, Pa.
Mercer, Pa.
Wooster, Oh.
Cleveland, Ok.
Trinidad, Co.

Main Pass

Database File: ac29-06b82807.db
Dataset Pathname: pass2
Presentation Format: cblrt
Dataset Creation: Tue Aug 28 14:37:57 2007 by Calc Std Casedhole 07051
Charted by: Depth in Feet scaled 1:240

0	GR (GAPI)	200	0	AMP3 (mV)	100	200	CBL5	1200
400	TT3 (usec)	200	18	CCL	-2			
			200	CBL5	1200			





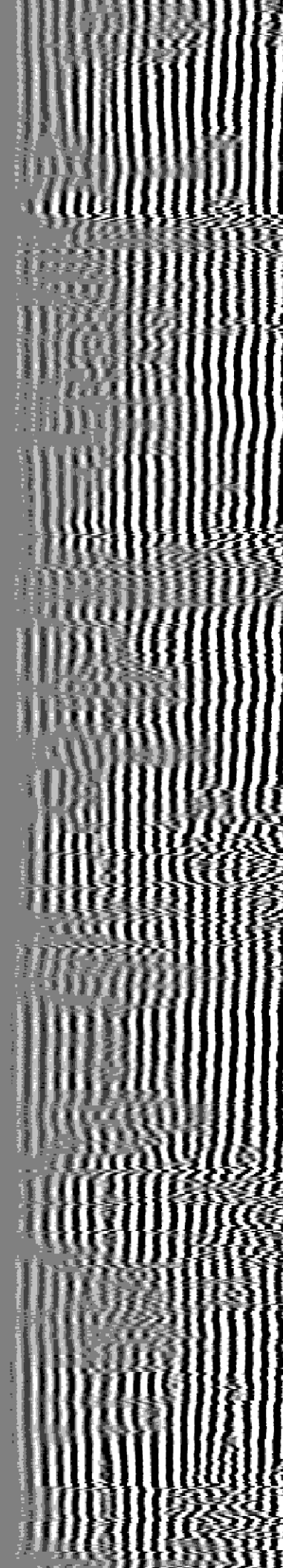
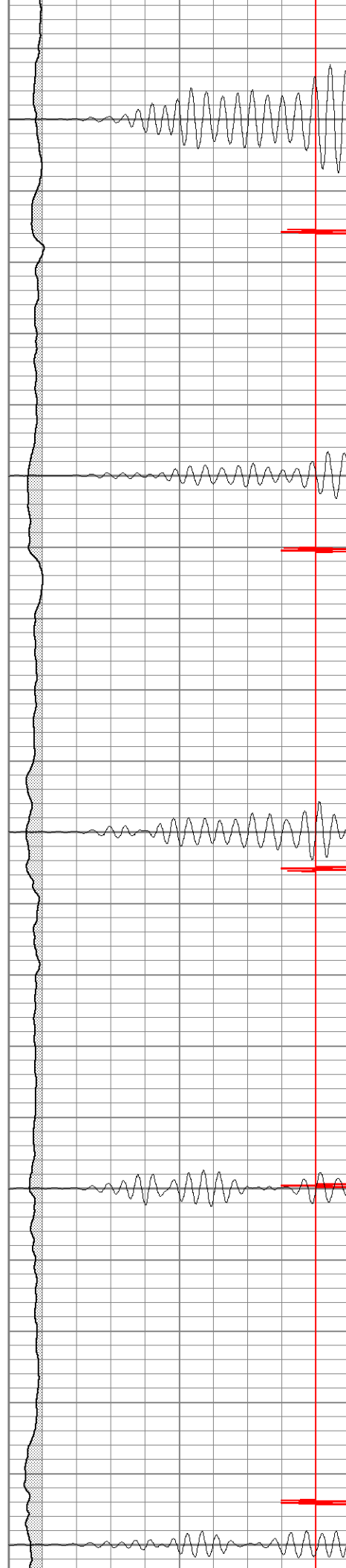
200

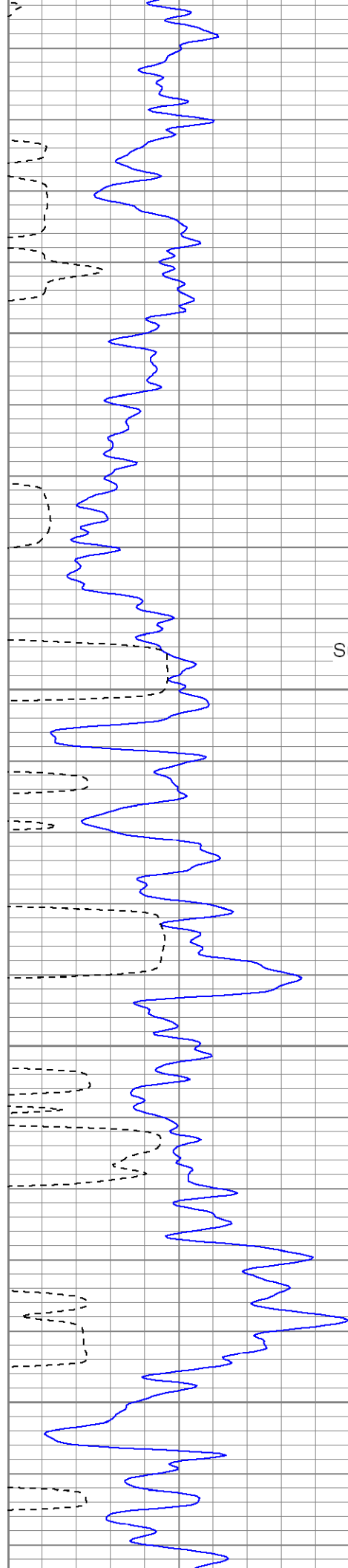
250

300

350

400





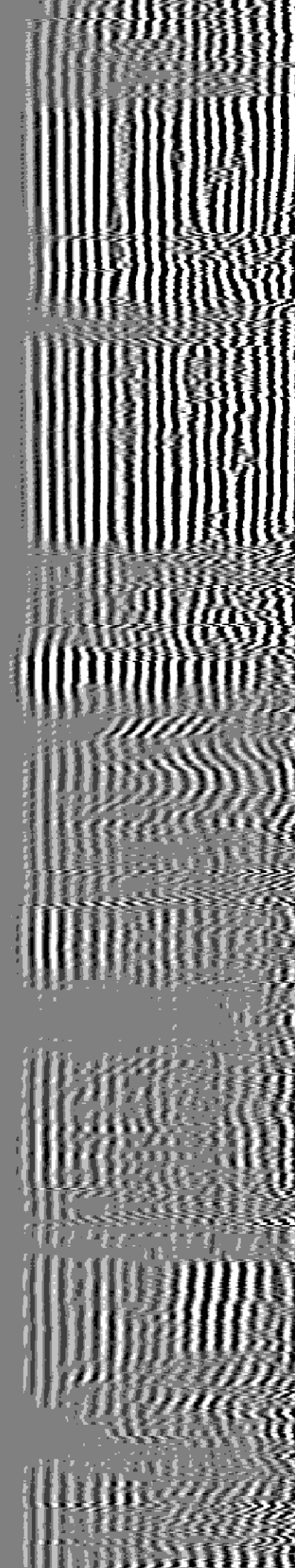
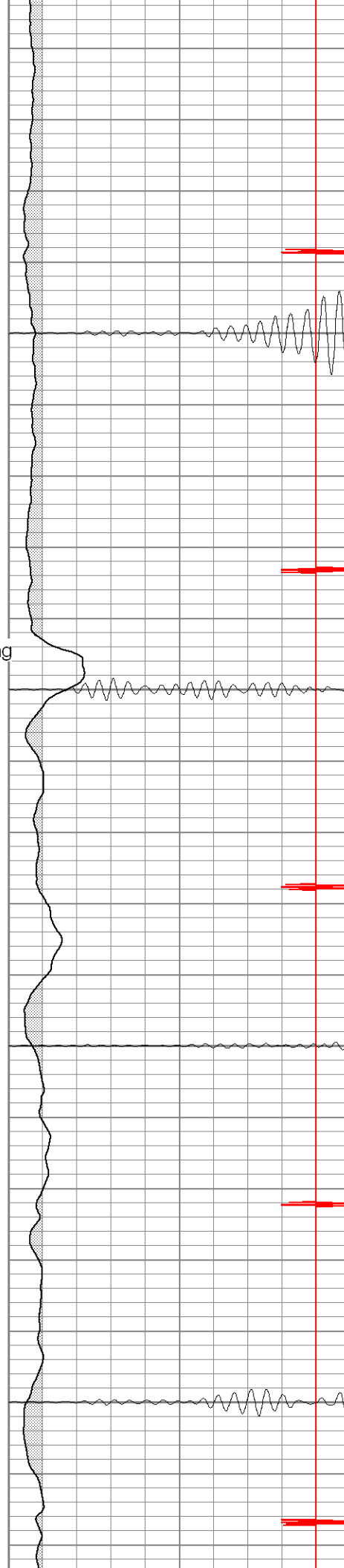
Surface Casing

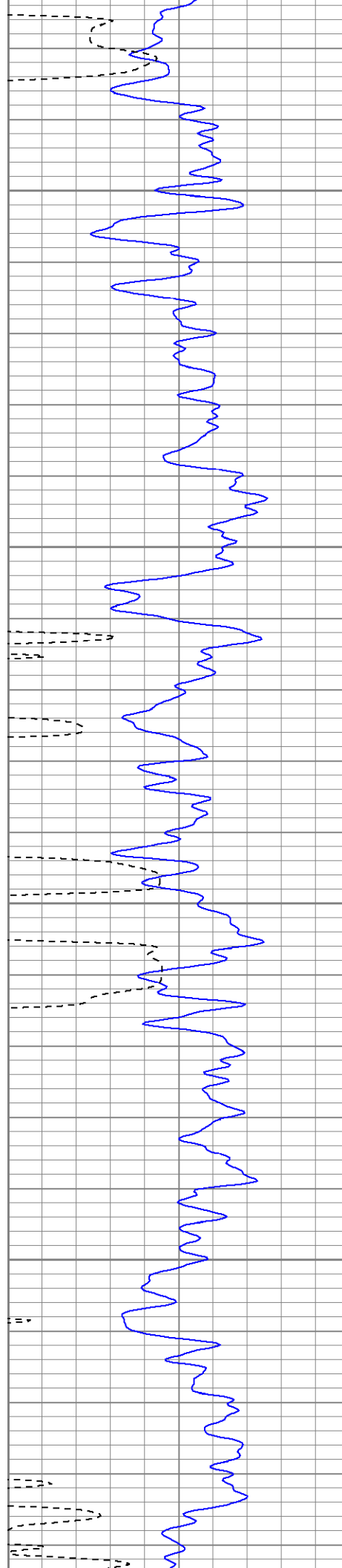
450

500

550

600



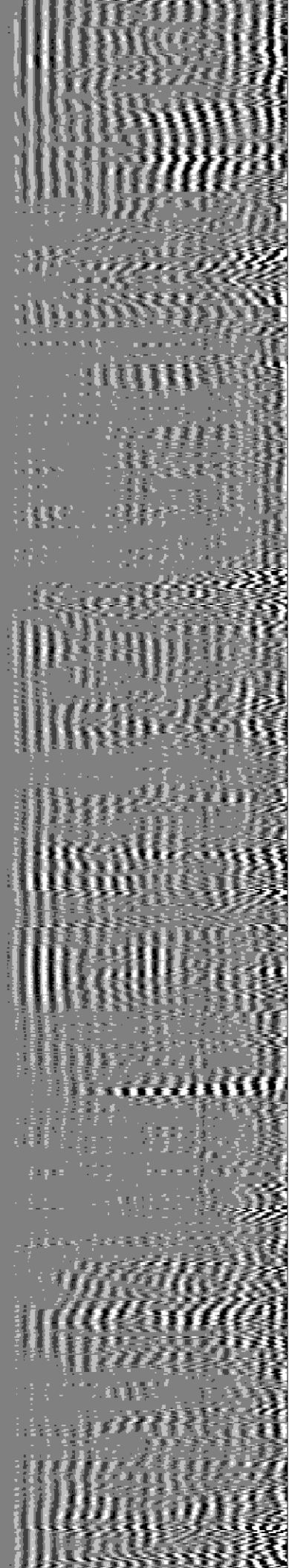


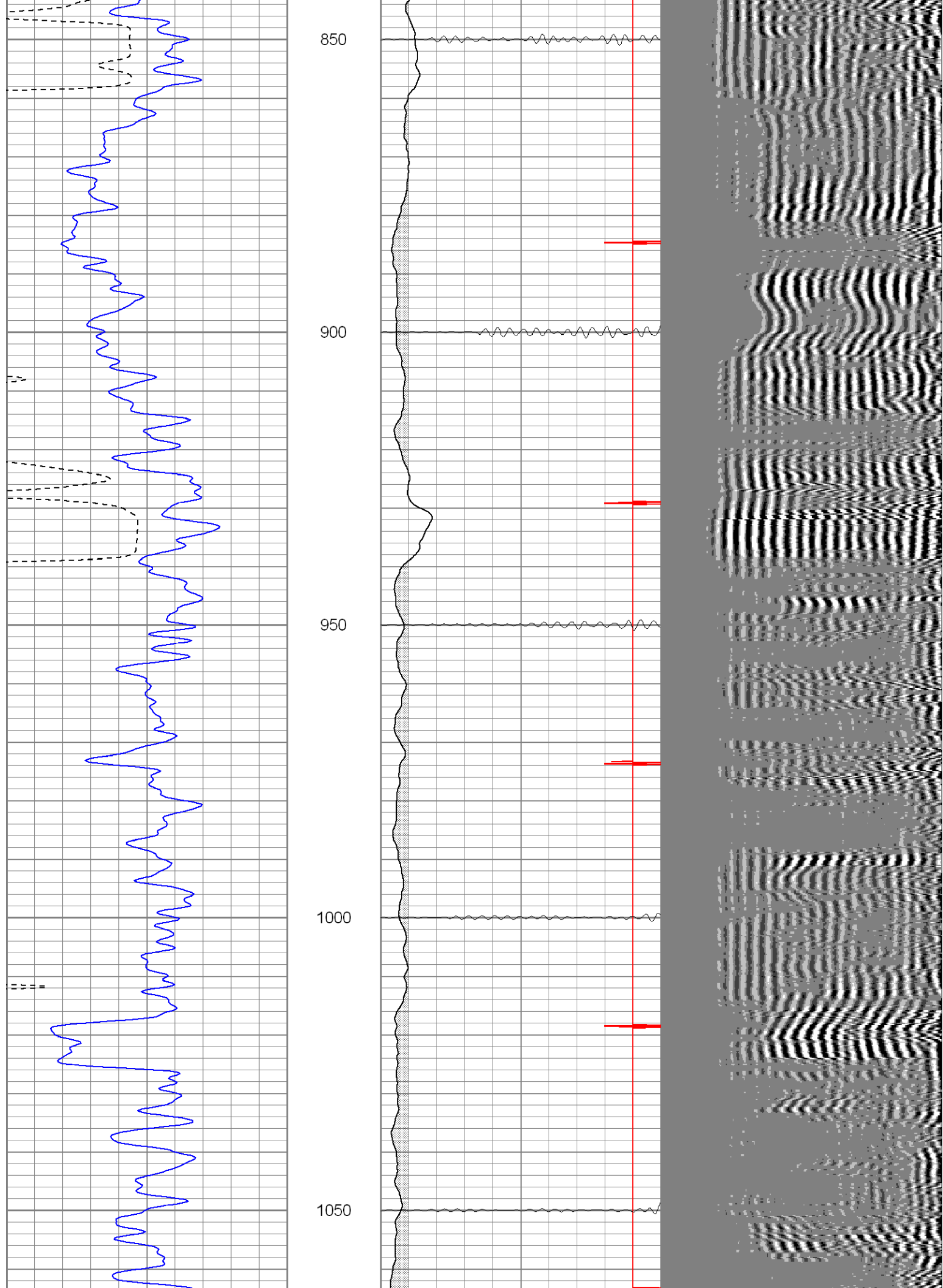
650

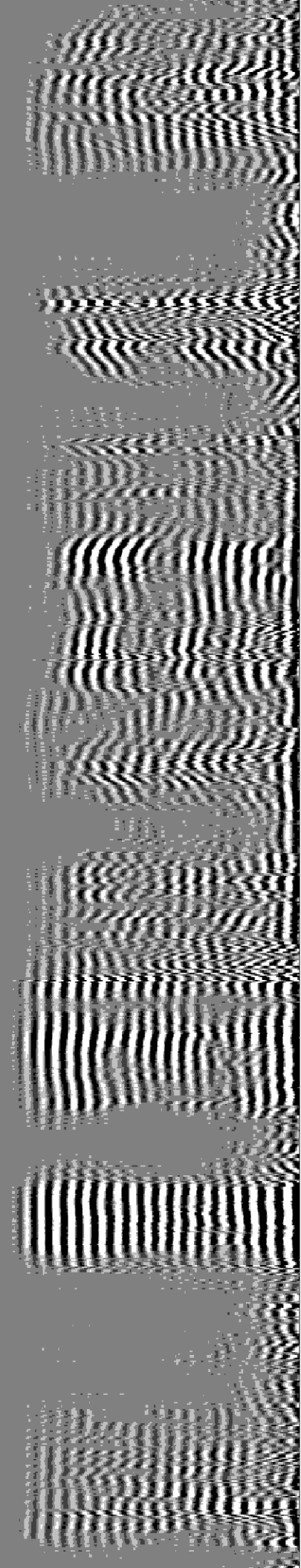
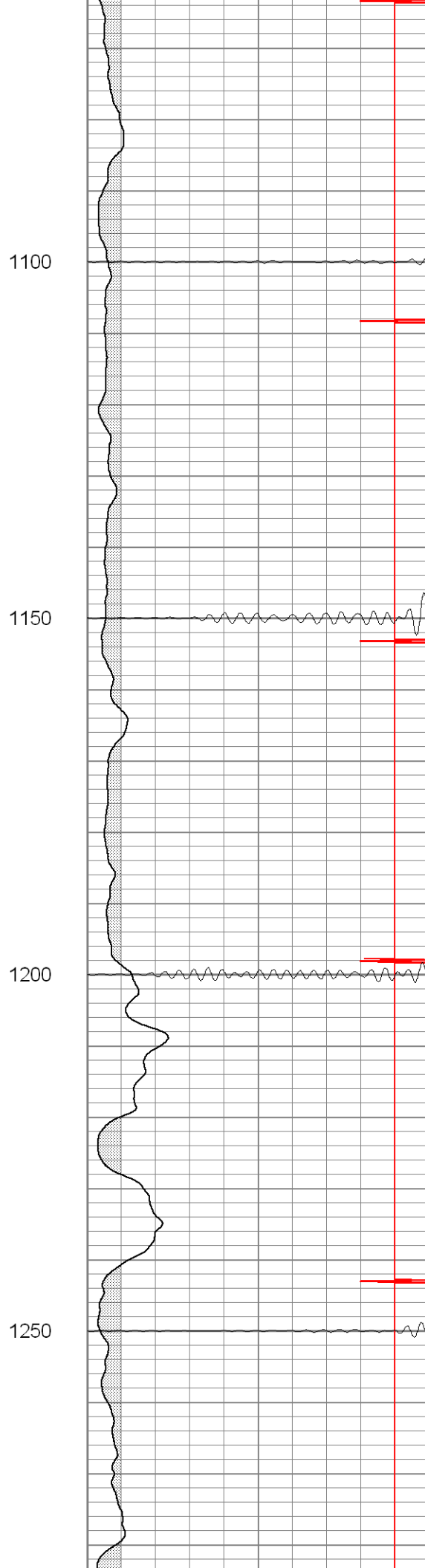
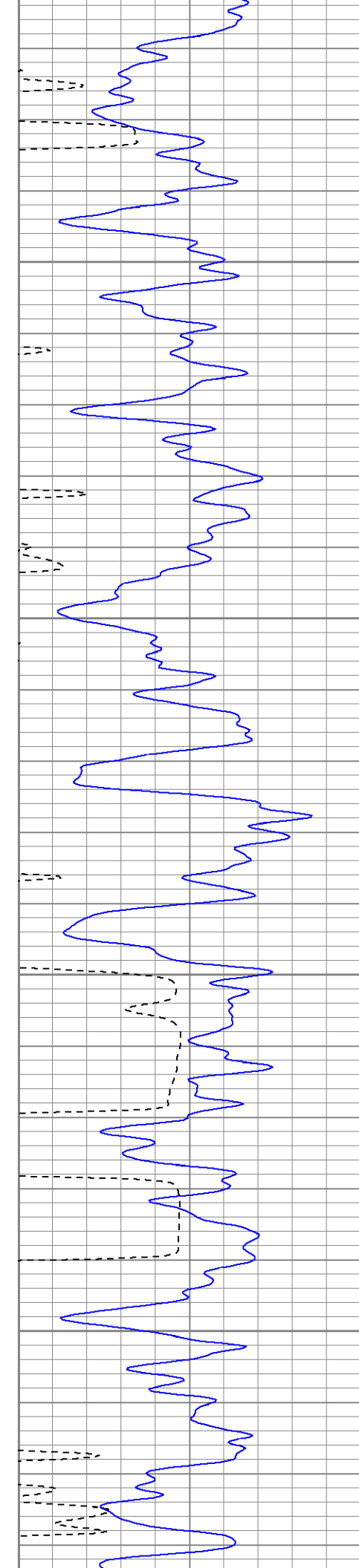
700

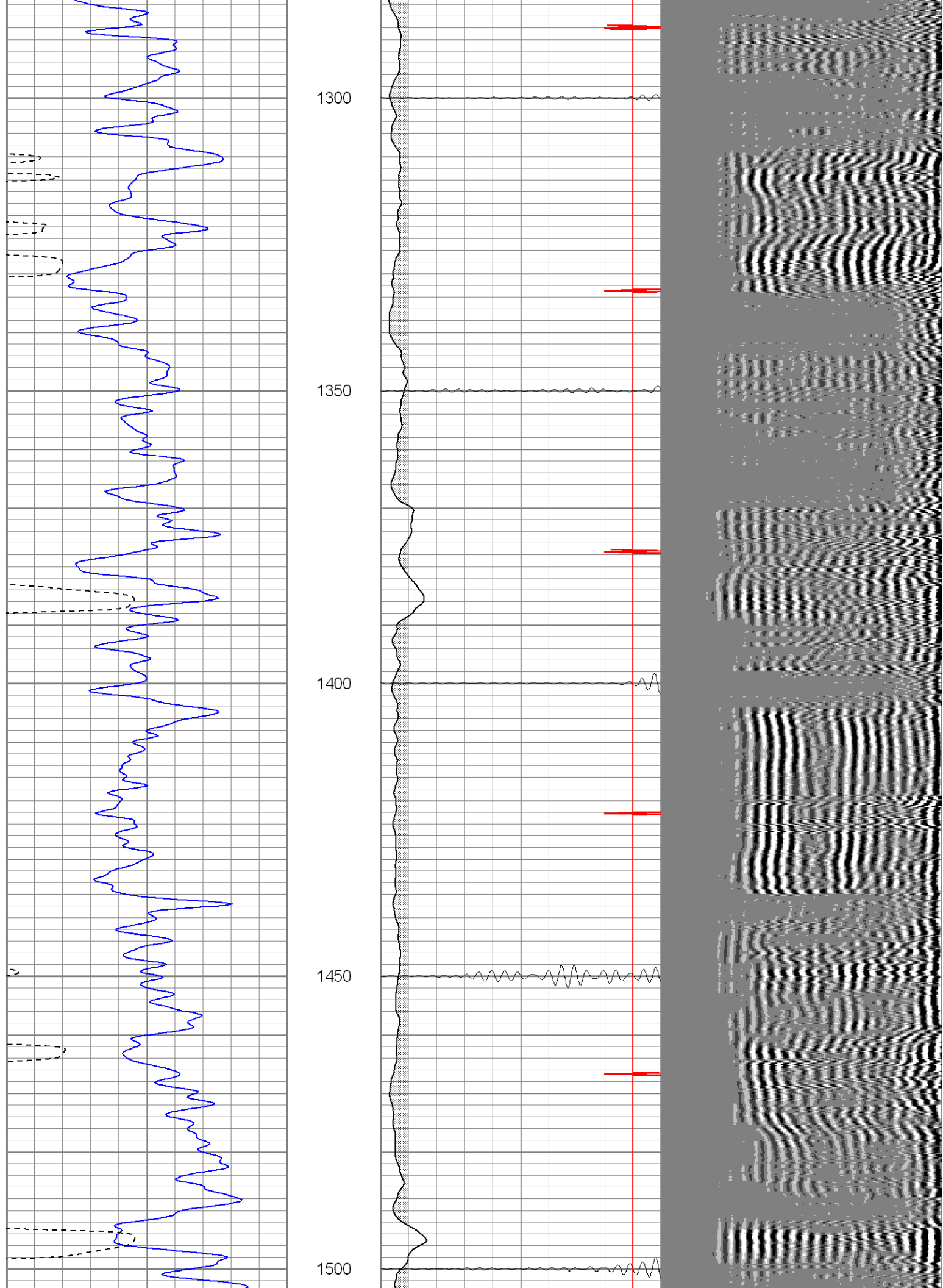
750

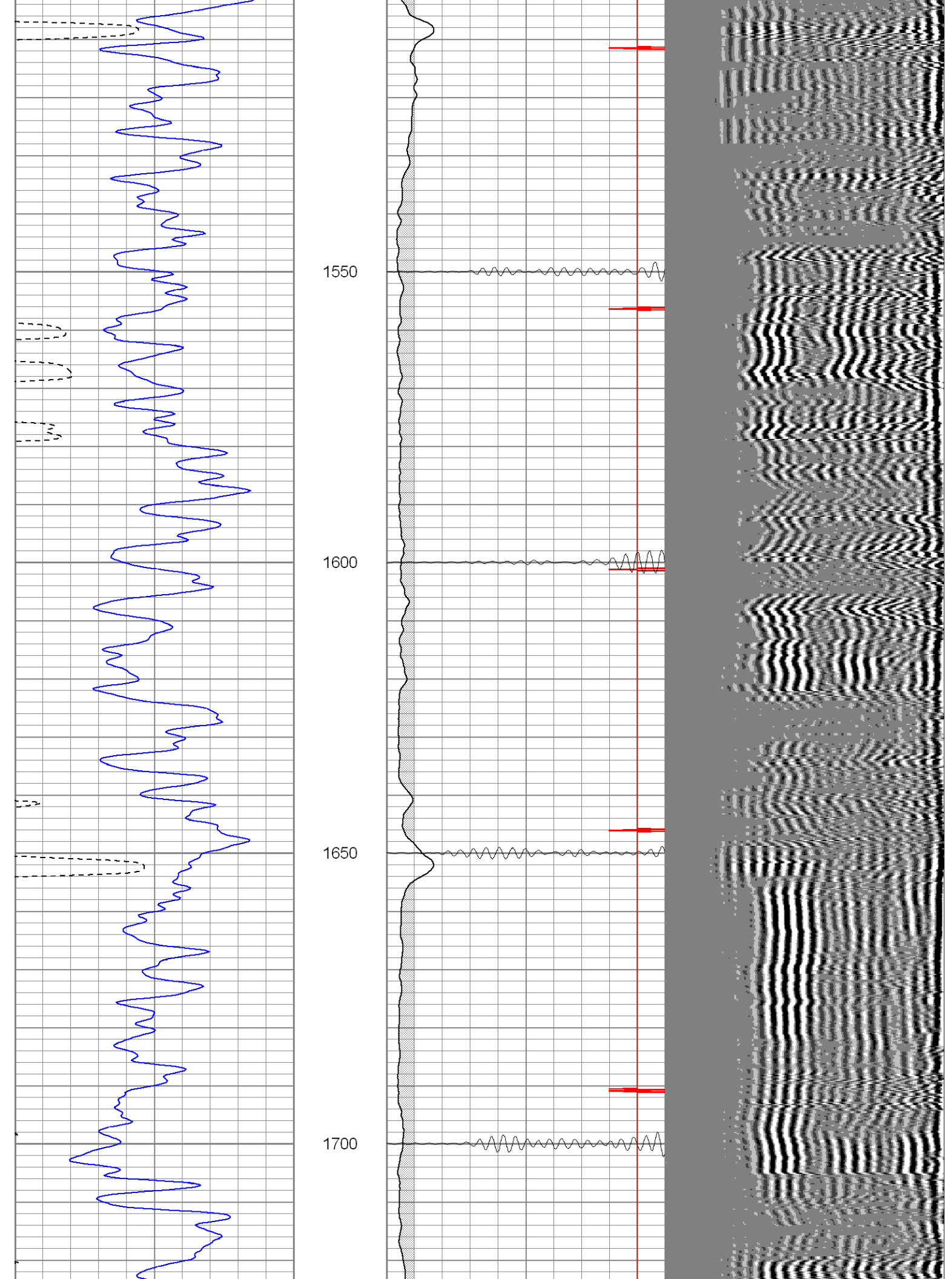
800

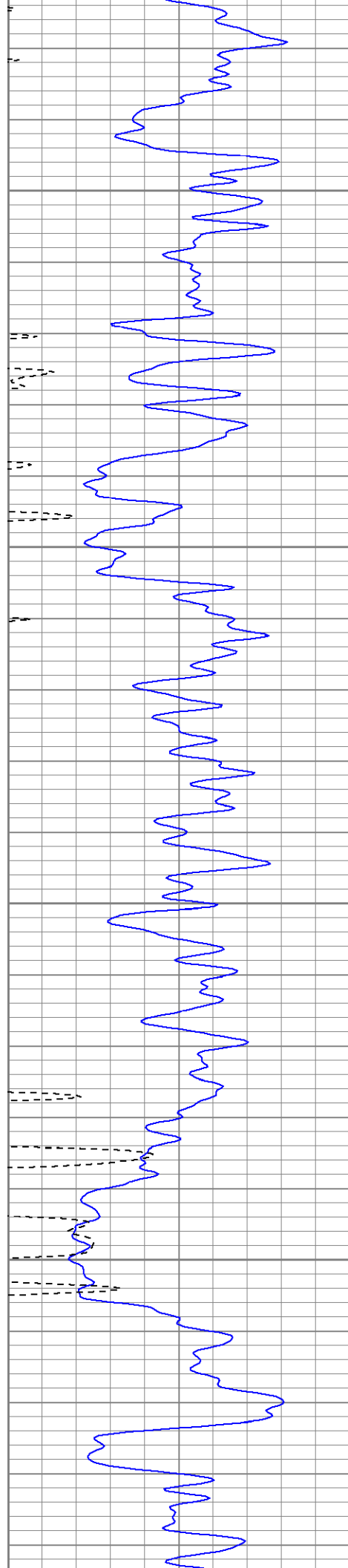










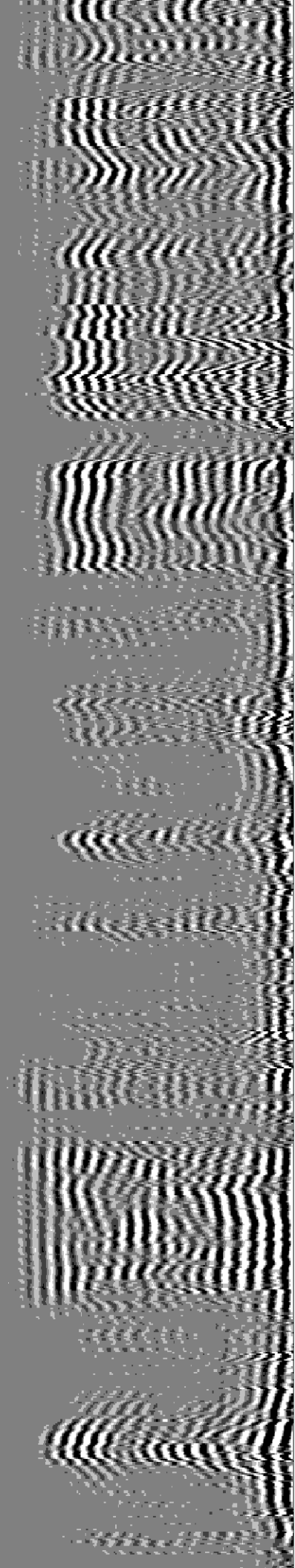


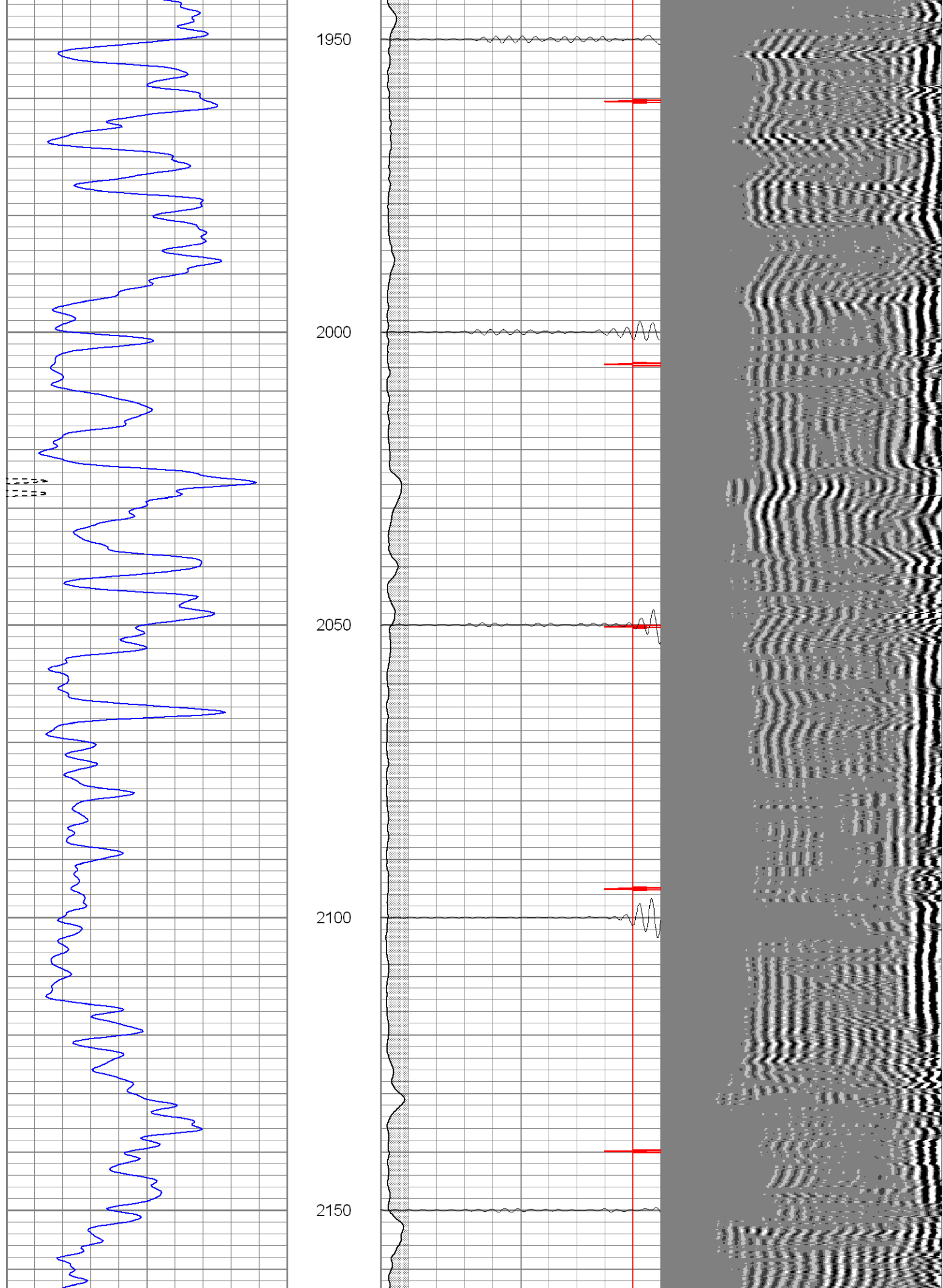
1750

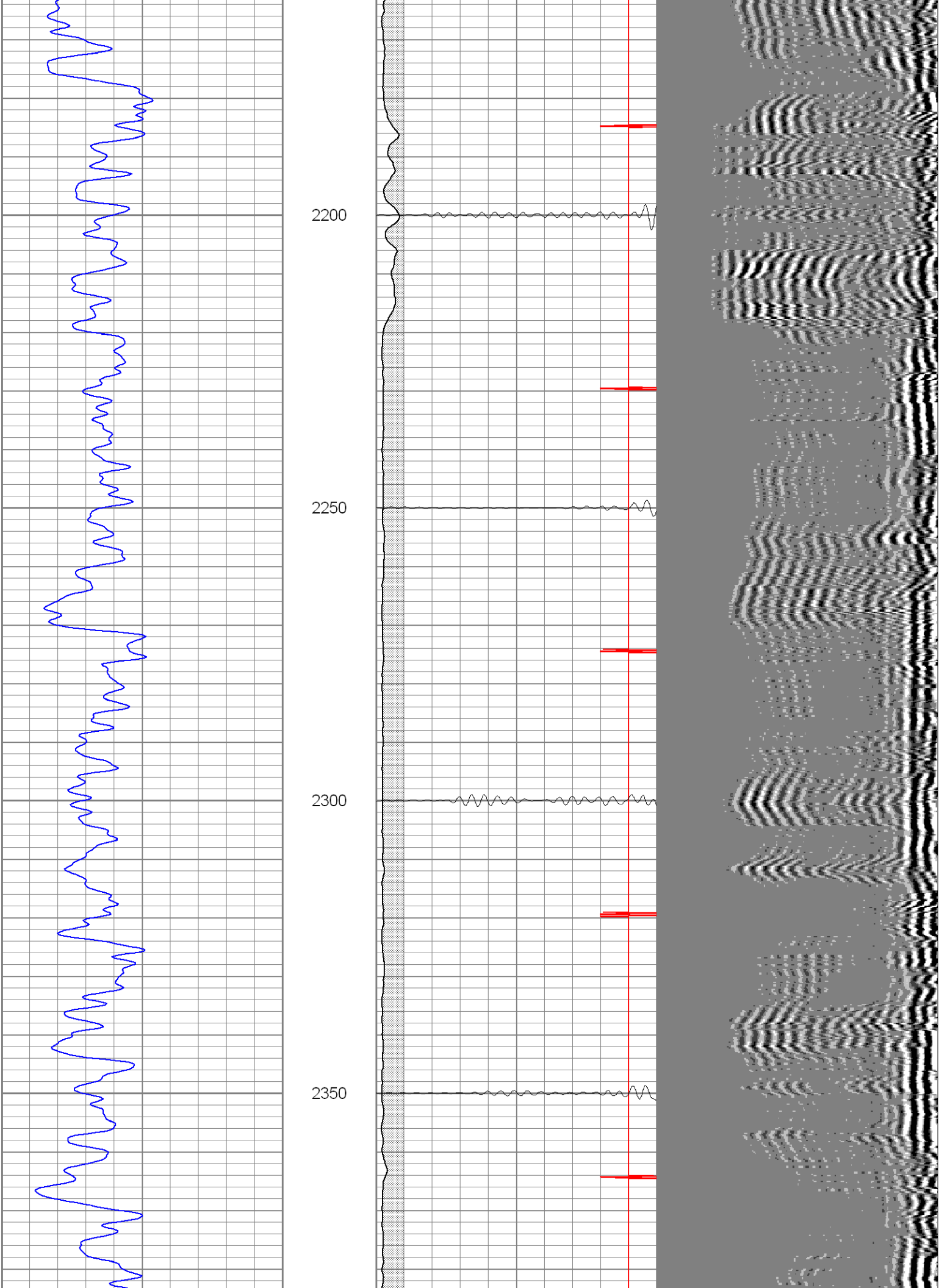
1800

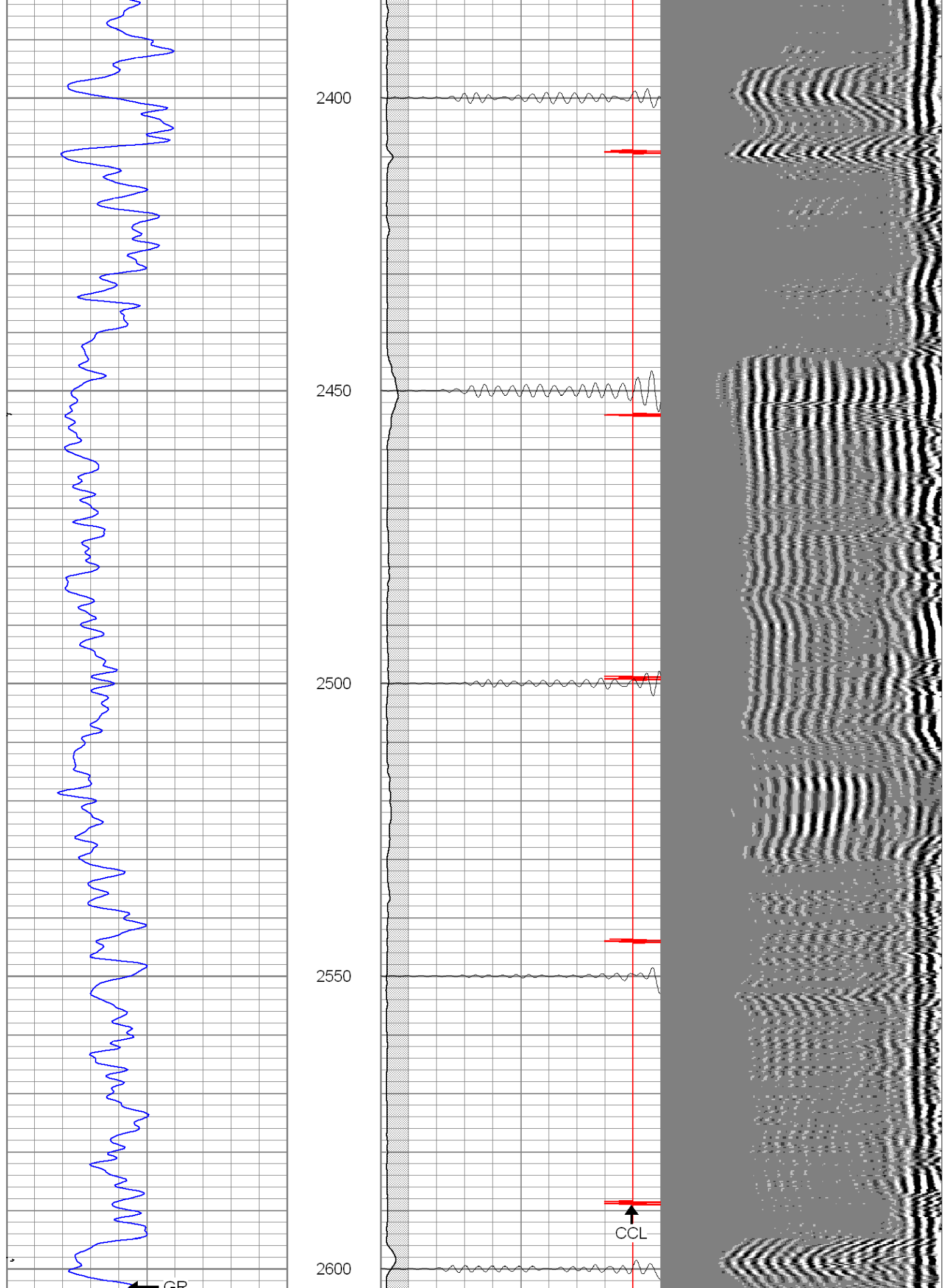
1850

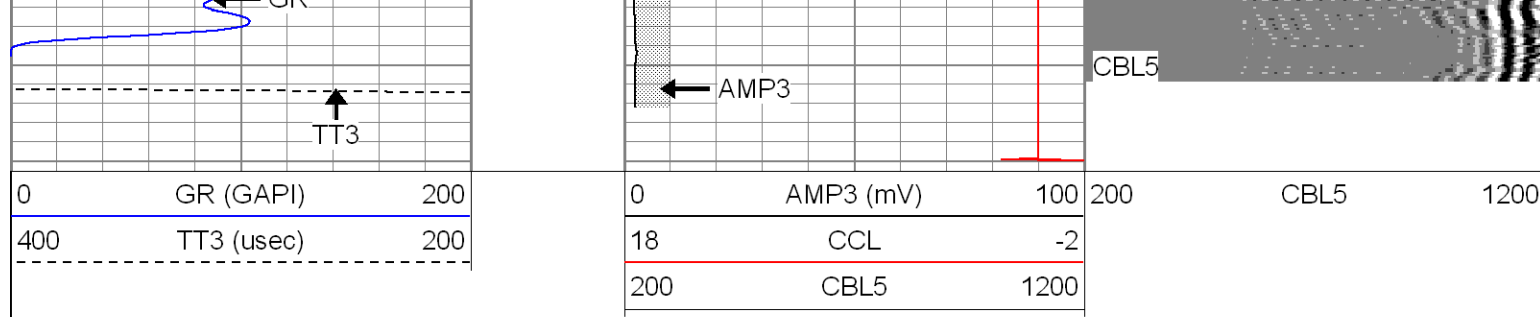
1900





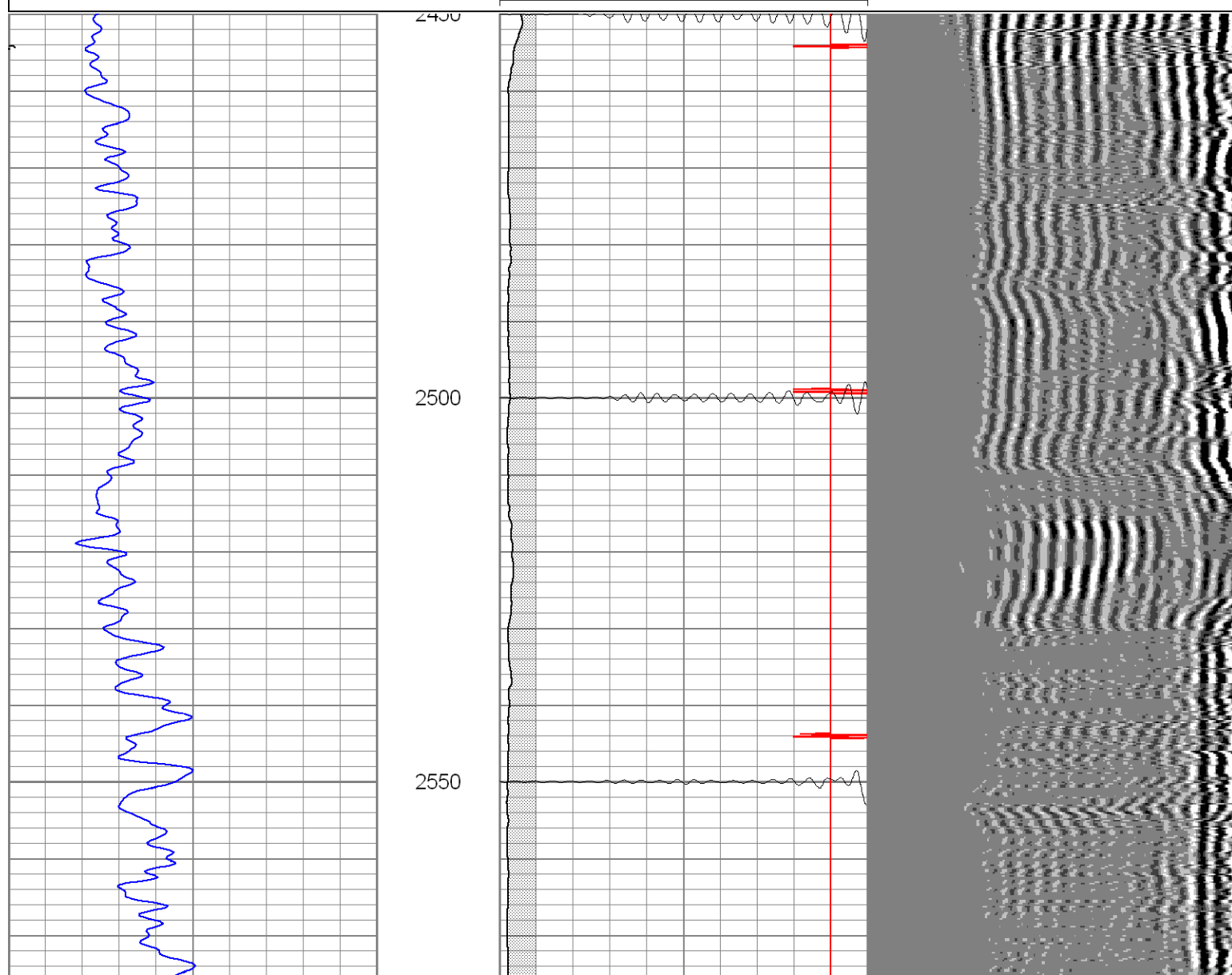
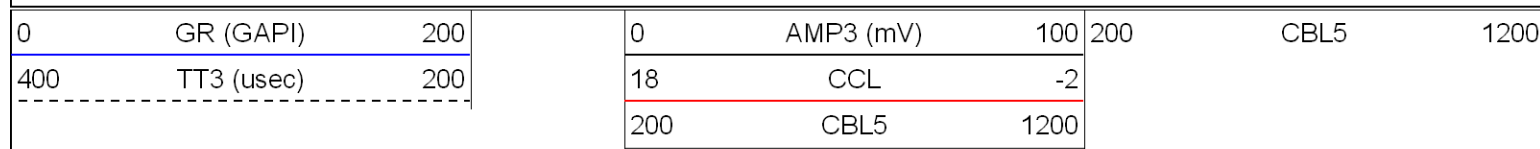


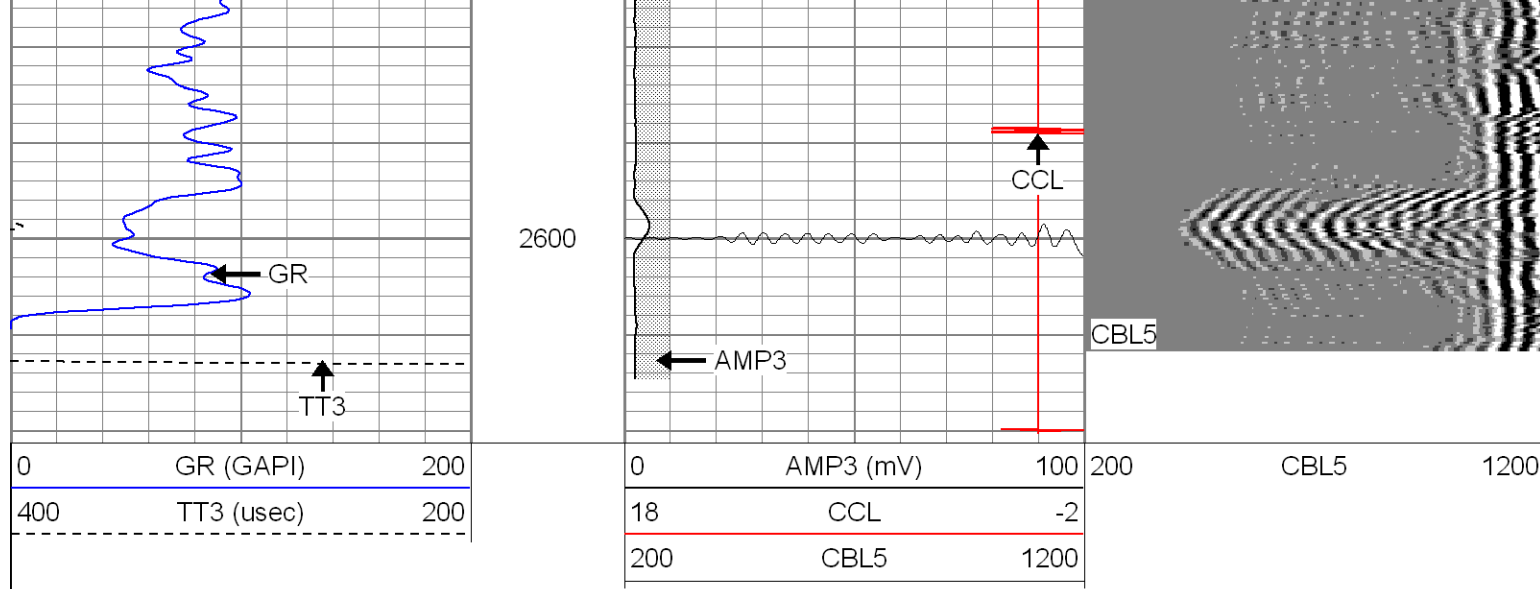




Repeat Section

Database File: ac29-06b82807.db
 Dataset Pathname: pass1
 Presentation Format: cblrt
 Dataset Creation: Tue Aug 28 13:23:46 2007 by Log Std Casedhole 07051
 Charted by: Depth in Feet scaled 1:240





Calibration Report

Database File: ac29-06b82807.db
 Dataset Pathname: pass1
 Dataset Creation: Tue Aug 28 13:23:46 2007 by Log Std Casedhole 07051

Cement Bond Log Calibration Report

Serial Number:	Titan2		
Tool Model:	T2		
Performed:	Tue Aug 28 13:17:00 2007		
Depth:	0	ft	
Casing Diameter:	0	in	
	3' Spacing	5' Spacing	
Signal Zero:	0	0	mV
Calibrated Amplitude:	85	85	mV
Reading at Signal Zero:	-0.05	0	V
Reading in Free Pipe:	1.8	1.6	V
Gain:	45.9459	53.125	
Offset:	2.2973	0	

Gamma Ray Calibration Report

Serial Number:	TITAN2	
Tool Model:	T2	
Performed:	Tue Aug 28 11:36:33 2007	
Calibrator Value:	1.0	GAPI
Background Reading:	0.0	cps
Calibrator Reading:	1.0	cps
Sensitivity:	1.5000	GAPI/cps