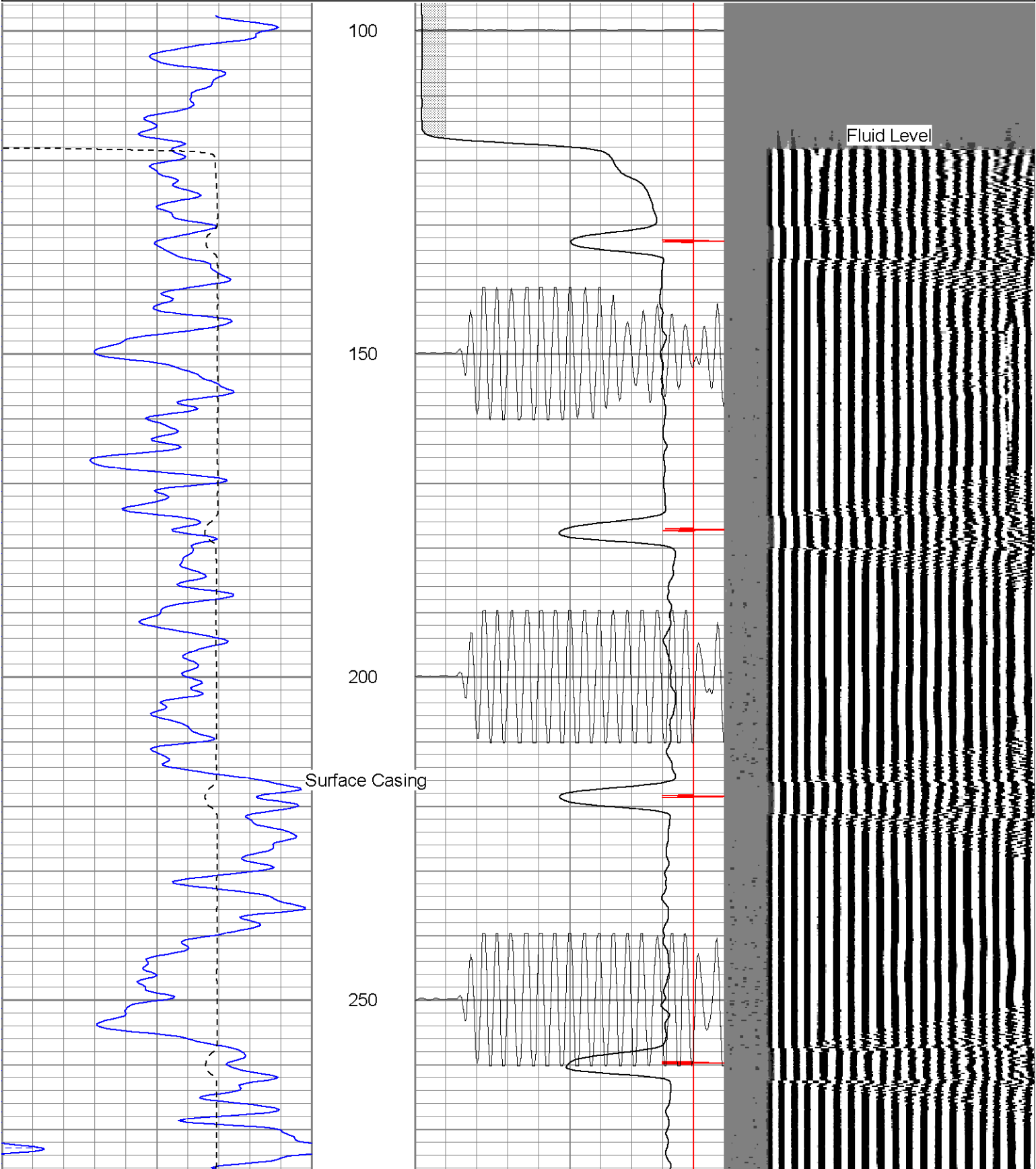
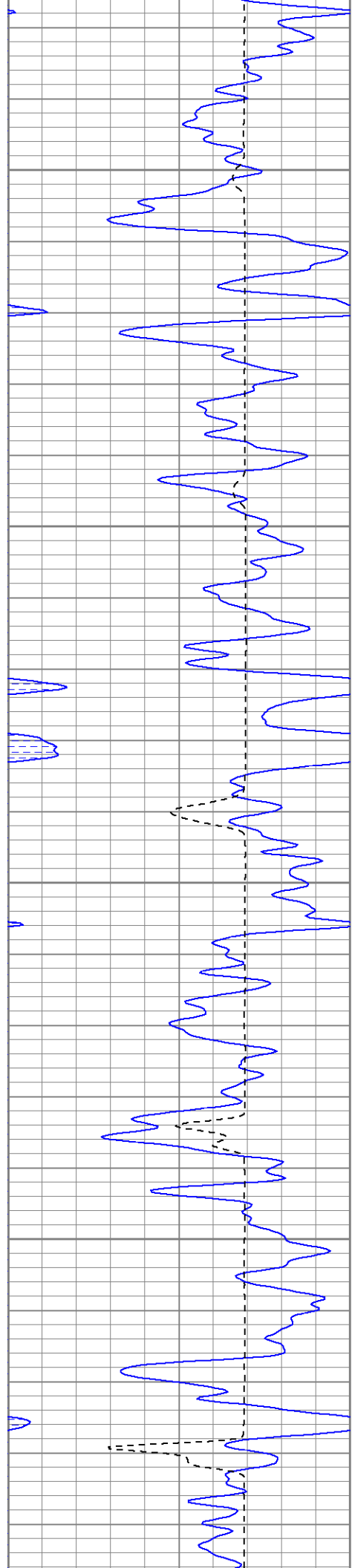


Database File: ac1312x2907b.db
Dataset Pathname: pass2
Presentation Format: cblrt
Dataset Creation: Fri Feb 09 09:26:20 2007 by Log Open-Cased 060407
Charted by: Depth in Feet scaled 1:240

0	GR (GAPI)	200	0	AMP3 (mV)	100	200	Variable Density	1200
200	GR (GAPI)	400	18	CCL	-2			
400	TT3 (usec)	200	200	CBL5	1200			



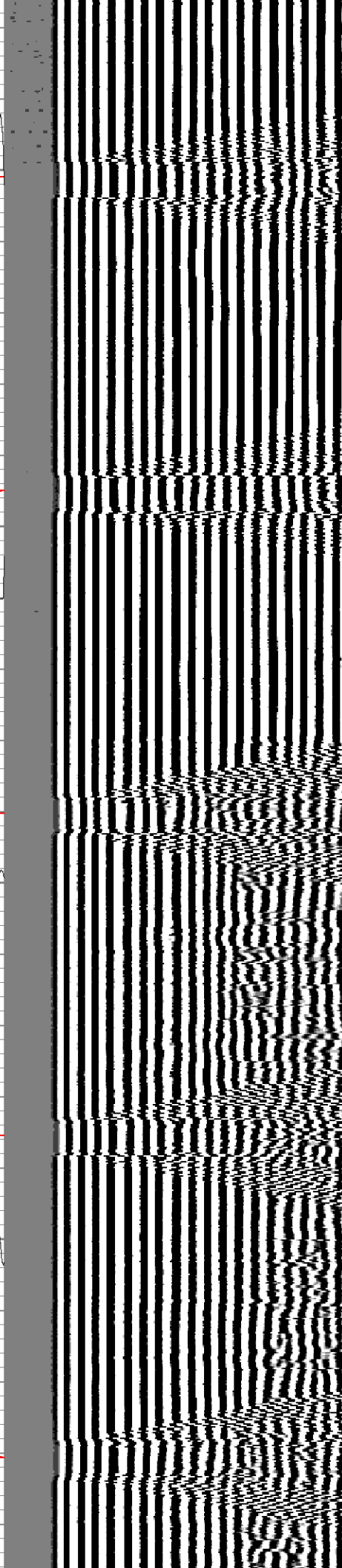
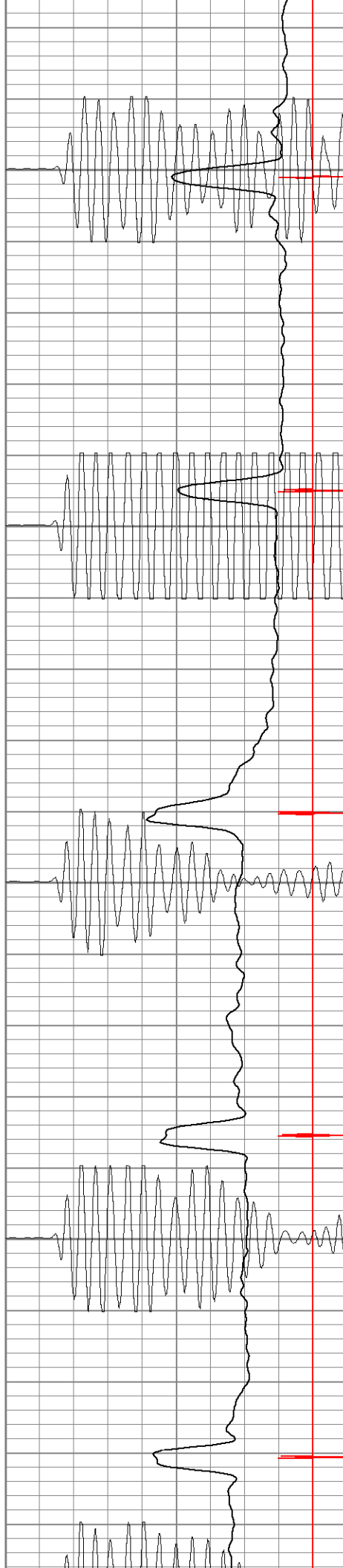


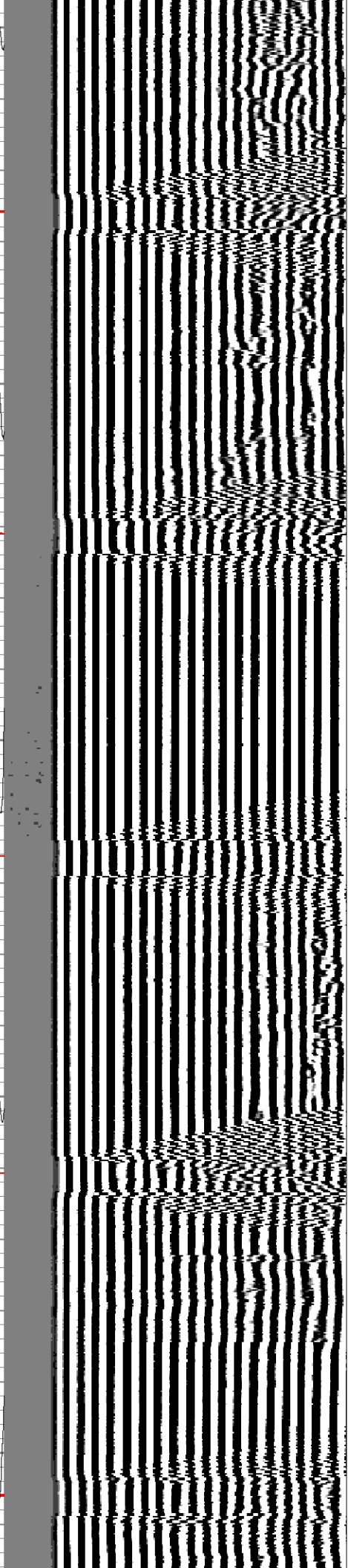
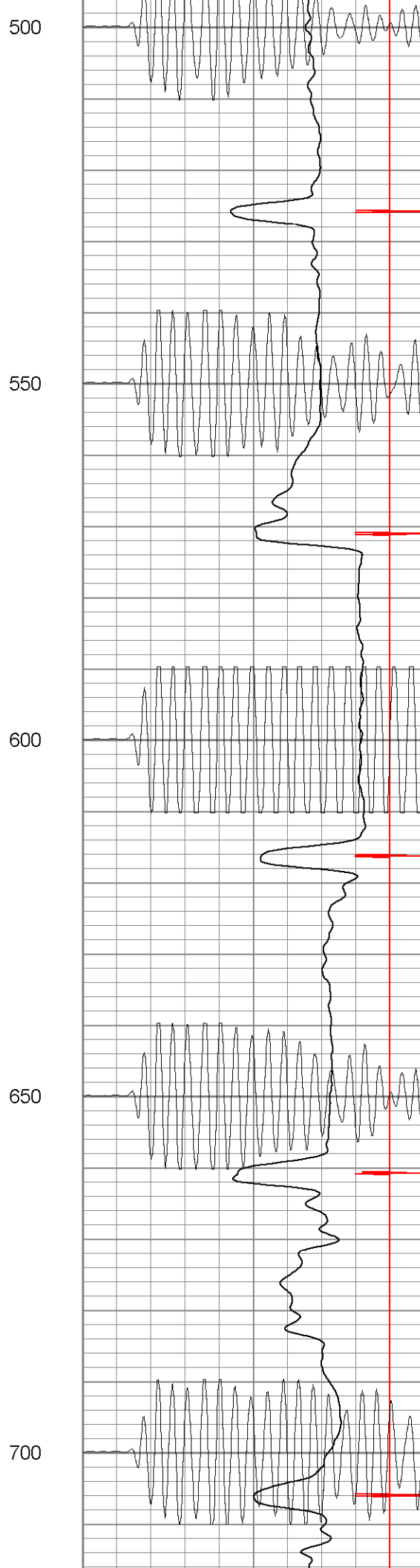
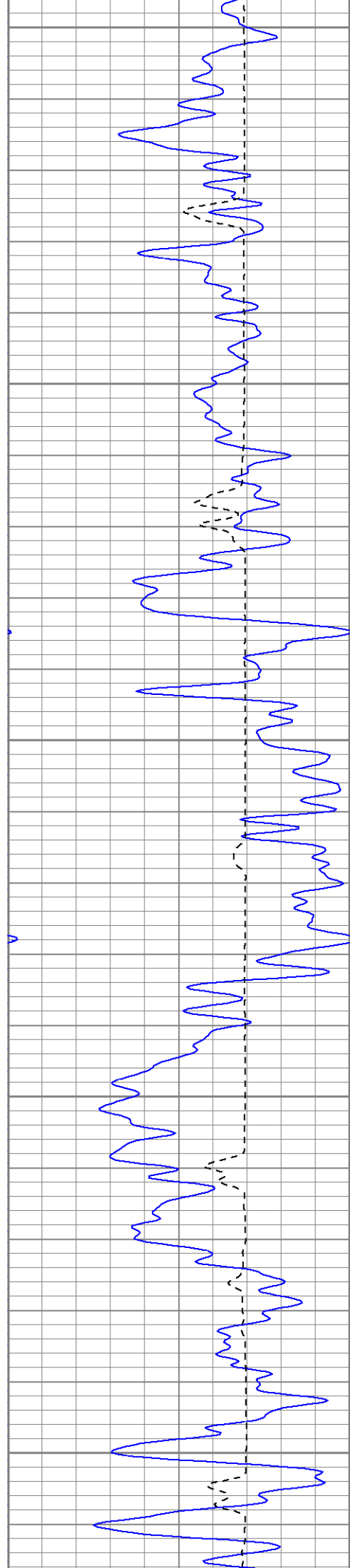
300

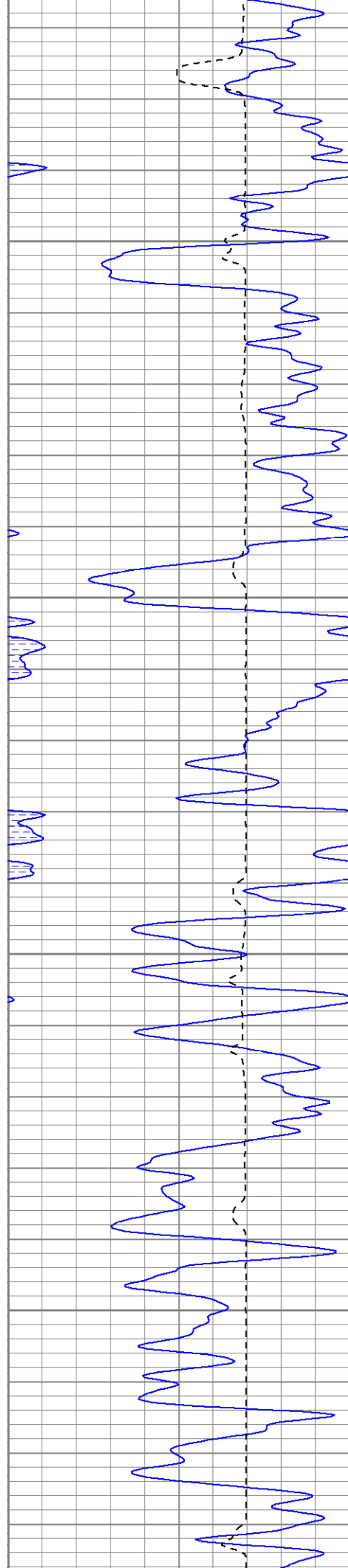
350

400

450





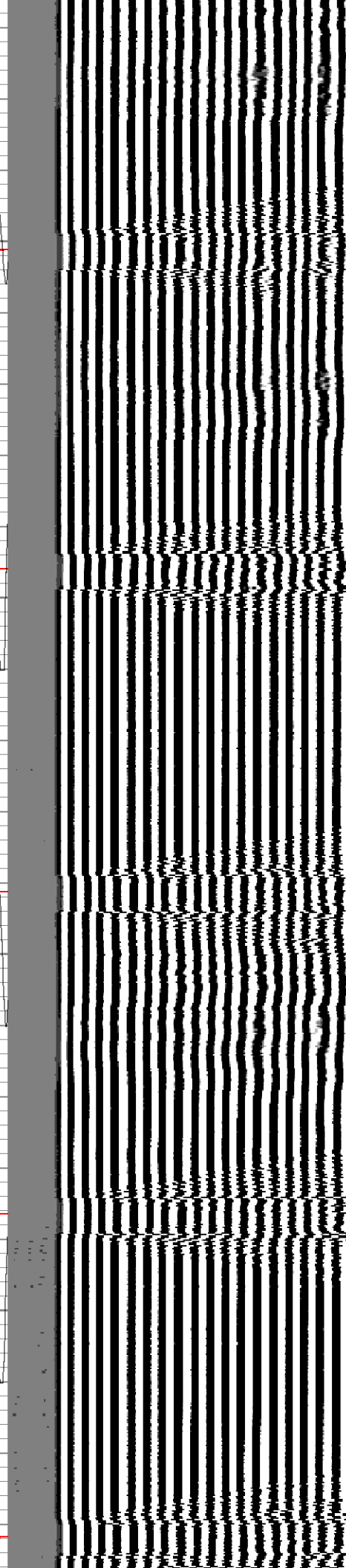


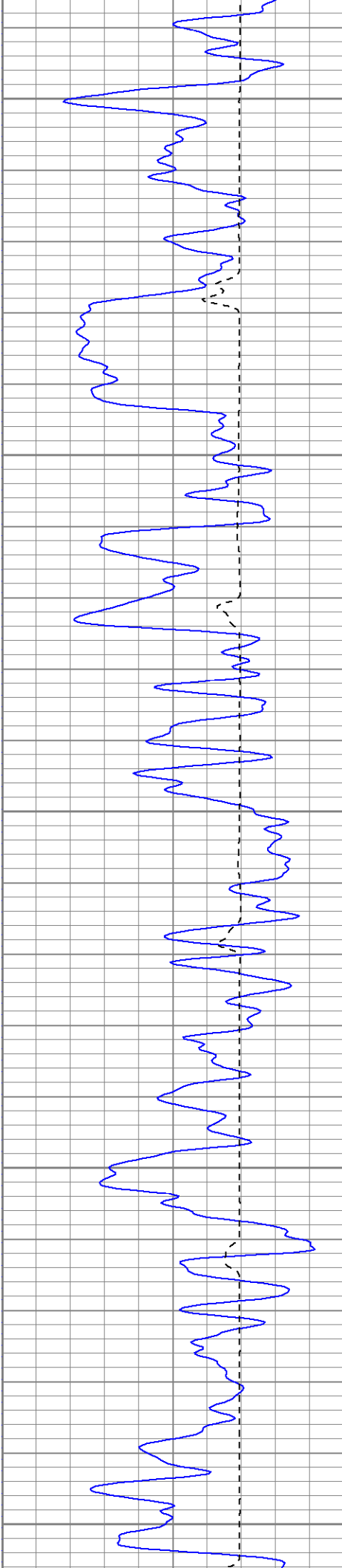
750

800

850

900





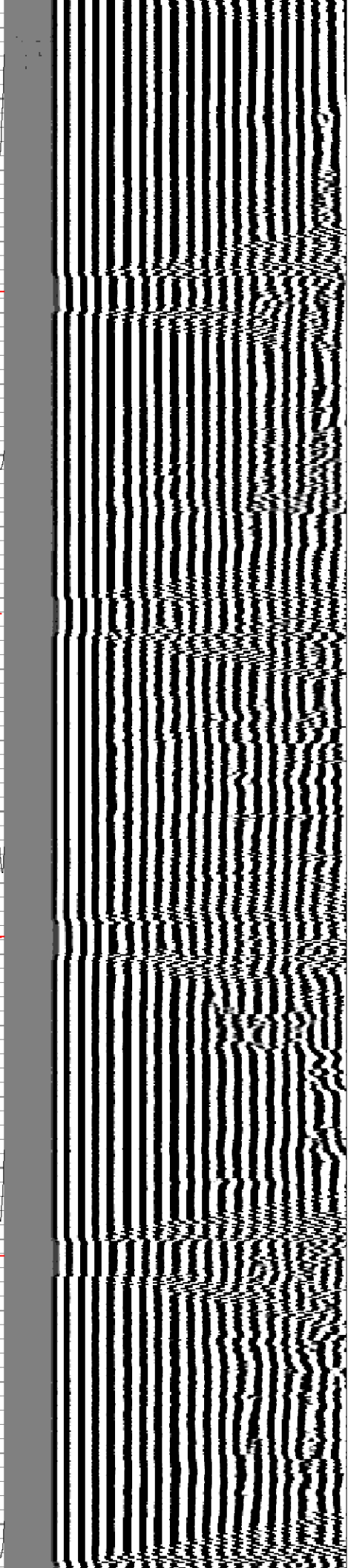
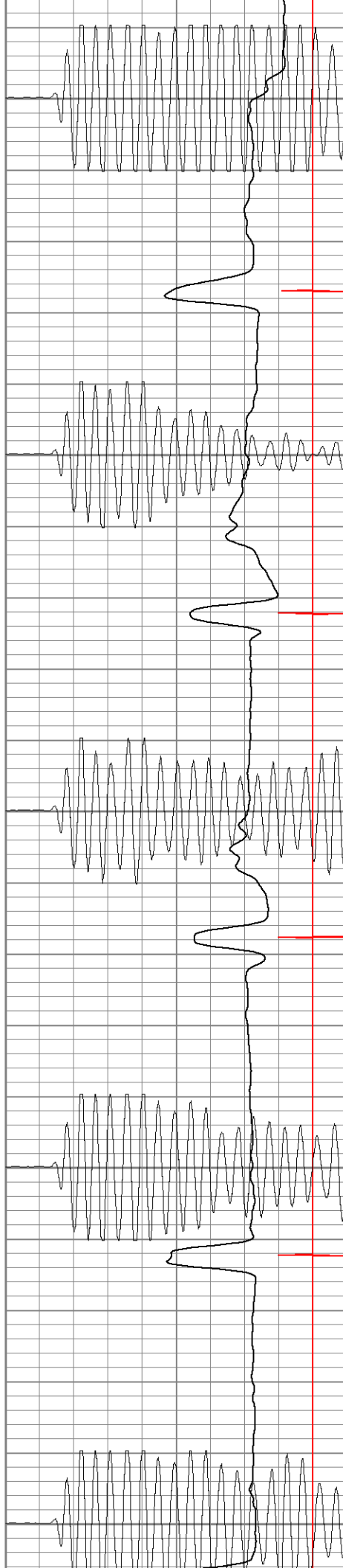
950

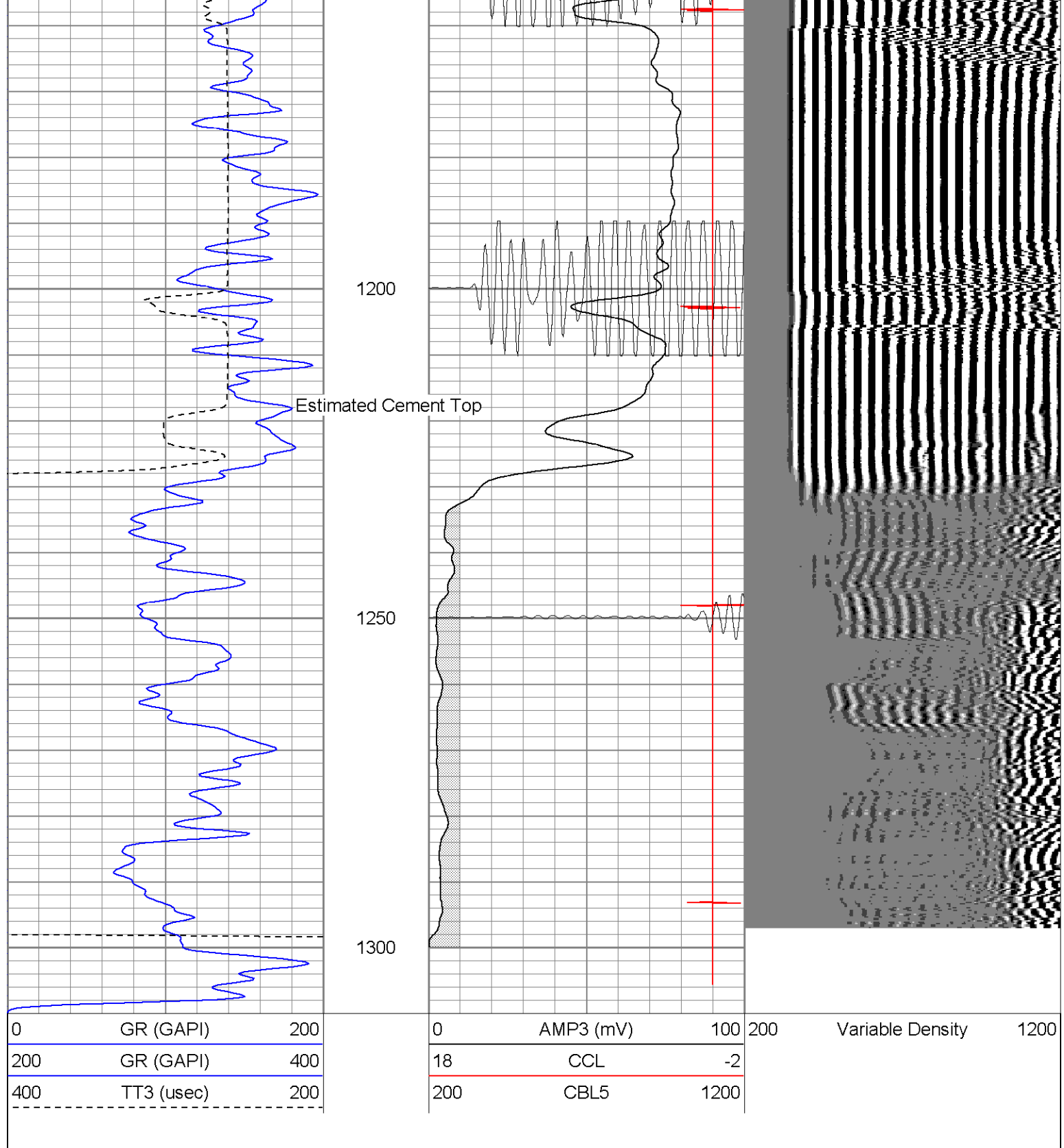
1000

1050

1100

1150





SUPERIOR

Black Lick, Pa.
Mercer, Pa.
Wooster, Oh.
Cleveland, Ok.
Trinidad, Co.

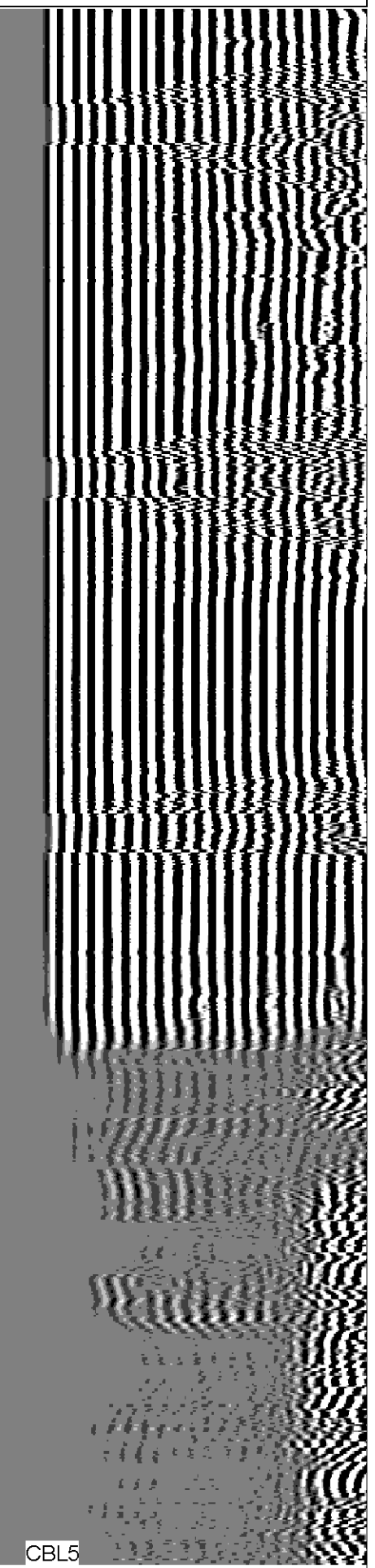
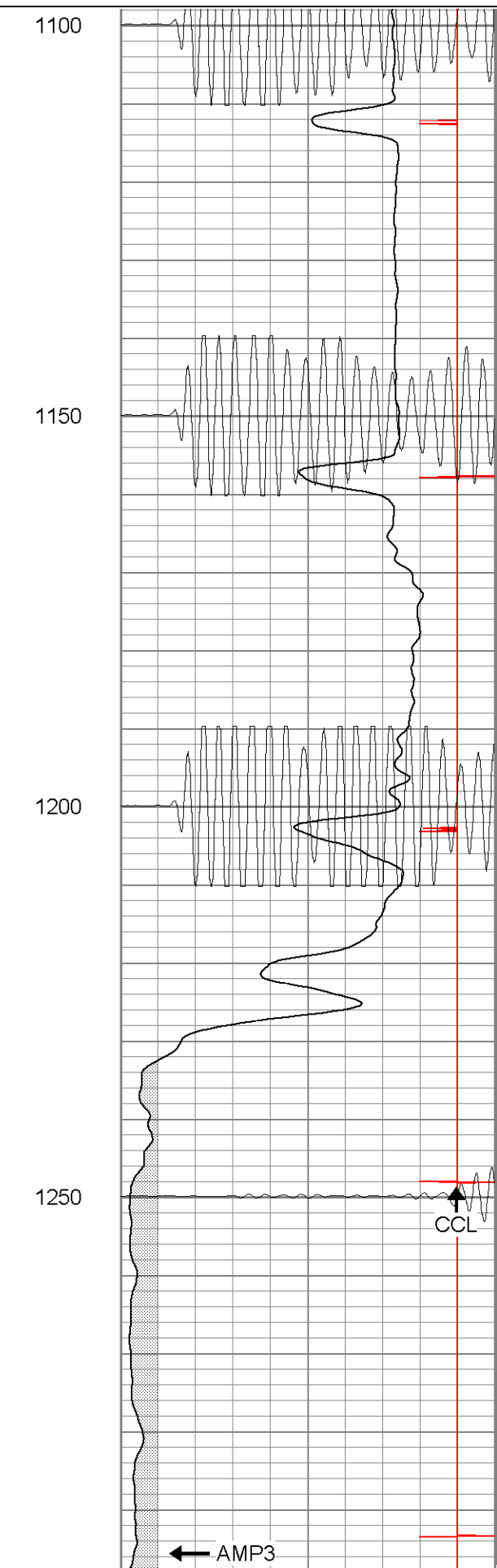
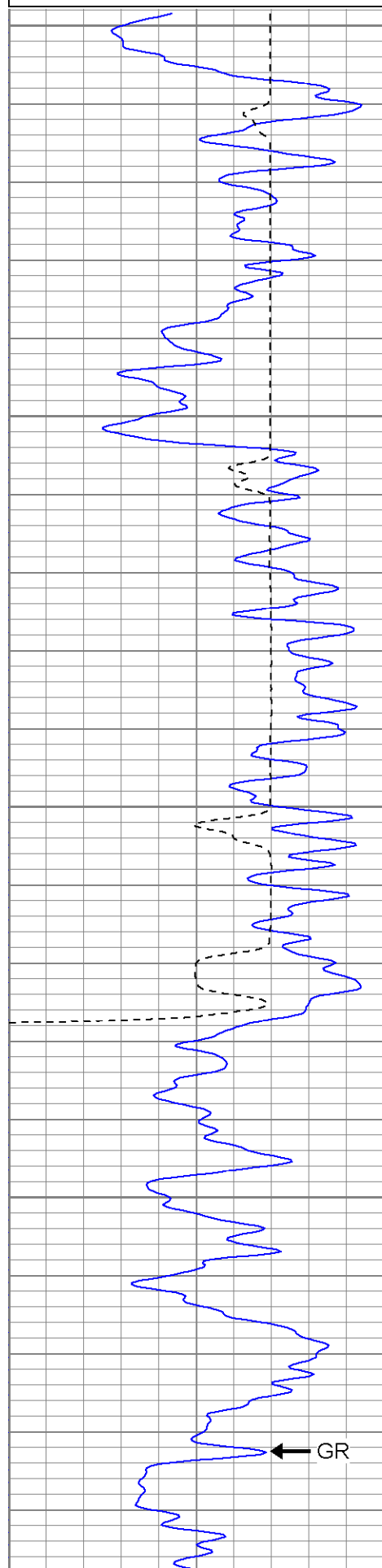
Repeat Section

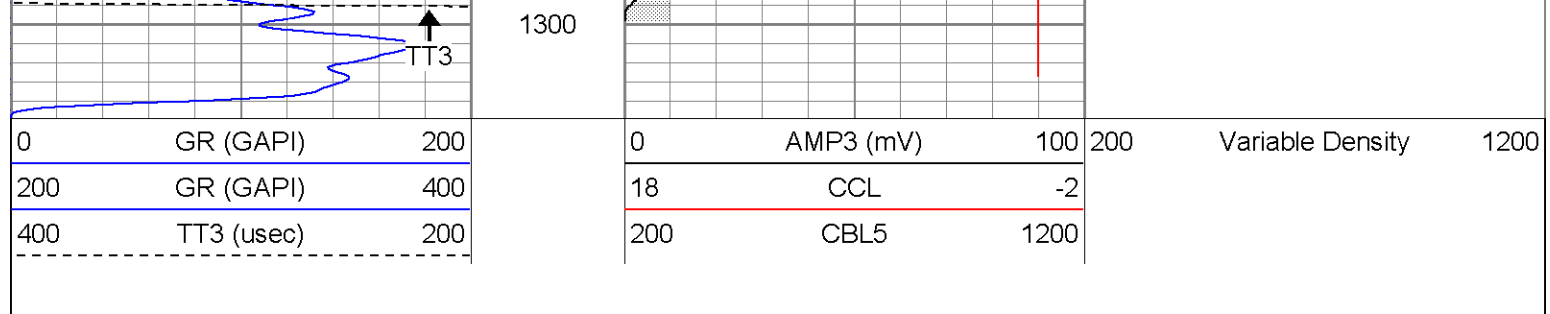
Database File: ac1312x2907b.db
Dataset Pathname: pass1
Presentation Format: cblrt
Dataset Creation: Fri Feb 09 09:17:46 2007 by Log Open-Cased 060407
Charted by: Depth in Feet scaled 1:240

0	GR (GAPI)	200
200	GR (GAPI)	400
400	TT3 (usec)	200

0	AMP3 (mV)	100
18	CCL	-2
200	CBL5	1200

200	Variable Density	1200
-----	------------------	------





Calibration Report			
Database File:	ac1312x2907b.db		
Dataset Pathname:	pass1		
Dataset Creation:	Fri Feb 09 09:17:46 2007 by Log Open-Cased 060407		
Gamma Ray Calibration Report			
Serial Number:	Titan2.75		
Tool Model:	2.75		
Performed:	Fri Jan 26 10:30:12 2007		
Calibrator Value:	200.0	GAPI	
Background Reading:	40.0	cps	
Calibrator Reading:	240.0	cps	
Sensitivity:	1.1000	GAPI/cps	
Cement Bond Log Calibration Report			
Serial Number:	Titan4		
Tool Model:	4		
Performed:	Fri Jan 26 11:14:49 2007		
Depth:	1054.62	ft	
Casing Diameter:	5.5	in	
	3' Spacing	5' Spacing	
Signal Zero:	0	1	mV
Calibrated Amplitude:	85	85	mV
Reading at Signal Zero:	0.00161133	0.0143555	V
Reading in Free Pipe:	1.27	1.65081	V
Gain:	67.0142	51.3306	
Offset:	0.25	0.263125	

Sensor	Offset (ft)	Schematic	Description	Len (ft)	OD (in)	Wt (lb)
CHD	20.38		CHD-None (0)	0.75	1.50	5.00
CENT	19.63		CENT-X (2)	3.00	1.69	25.00
WVF5	12.82		CBL-4 (Titan4)	8.15	2.25	110.00
WVF3	11.82					
CENT	8.48		CENT-X (1)	3.00	1.69	25.00
CCL	4.27		CCL-2.75 (Titan2.75)	1.71	2.75	15.00

