

Patterson

**SINGLE
INDUCTION
LOG**

Company Pioneer Natural Resources
Well Predator 42-15
Field Purgatoire River
County Las Animas State Colorado

Location: API # : 05 071 08531 00

2275' FNL & 569' FEL

SEC 15 TWP 33S RGE 65W

Permanent Datum Ground Level Elevation 6611'
Log Measured From Kelly Bushing 4' Above G.L.
Drilling Measured From Kelly Bushing

Other Services
CDL
NEUTRON
Elevation
K.B. 6615'
D.F. -----
G.L. 6611'

Date 10-05-05

Run Number One

Depth Driller 850'

Depth Logger 850'

Bottom Logged Interval 848'

Top Log Interval Surface Casing

Casing Driller 8 5/8" @ 569'

Casing Logger 569'

Bit Size 7 7/8"

Type Fluid in Hole Water

Density / Viscosity ///

pH / Fluid Loss ///

Source of Sample ///

Rm @ Meas. Temp ///

Rmf @ Meas. Temp ///

Rmc @ Meas. Temp ///

Source of Rmf / Rmc ///

Rm @ BHT ///

Time Circulation Stopped 12:00 P.M.

Time Logger on Bottom 1:40 P.M.

Maximum Recorded Temperature 68 DEG F

Equipment Number T720

Location Trinidad

Recorded By M. Norton

Witnessed By Mr. Tom Beardslee

<<< Fold Here >>>

All interpretations are opinions based on inferences from electrical or other measurements and we cannot and do not guarantee the accuracy or correctness of any interpretation, and we shall not, except in the case of gross or willful negligence on our part, be liable or responsible for any loss, costs, damages, or expenses incurred or sustained by anyone resulting from any interpretation made by any of our officers, agents or employees. These interpretations are also subject to our general terms and conditions set out in our current Price Schedule.

Comments

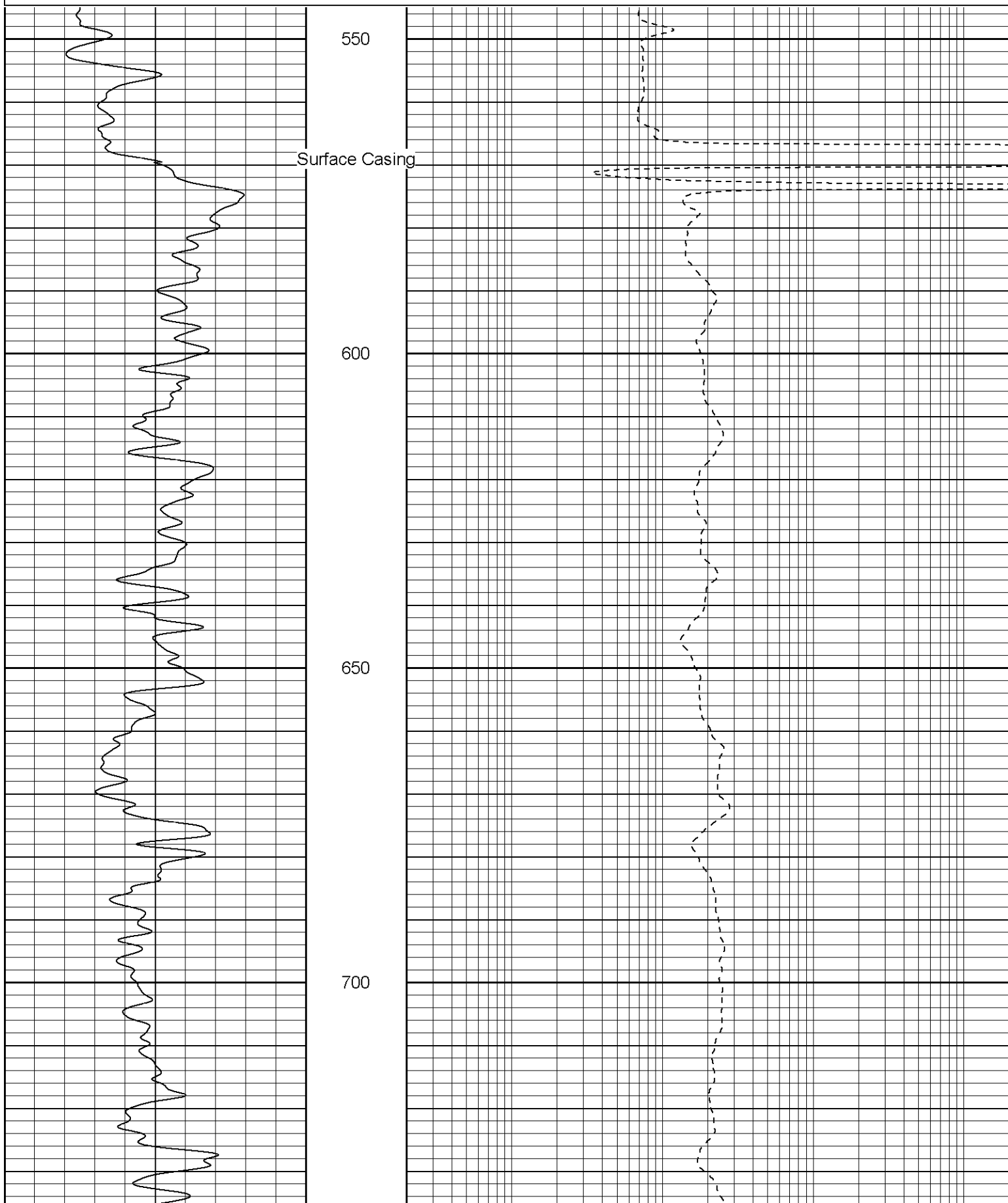
Well Directions:
Bon Carbo Left Just Before Hootch House, First Left, Thru Gate(0000),
First Left, First Left To Location.

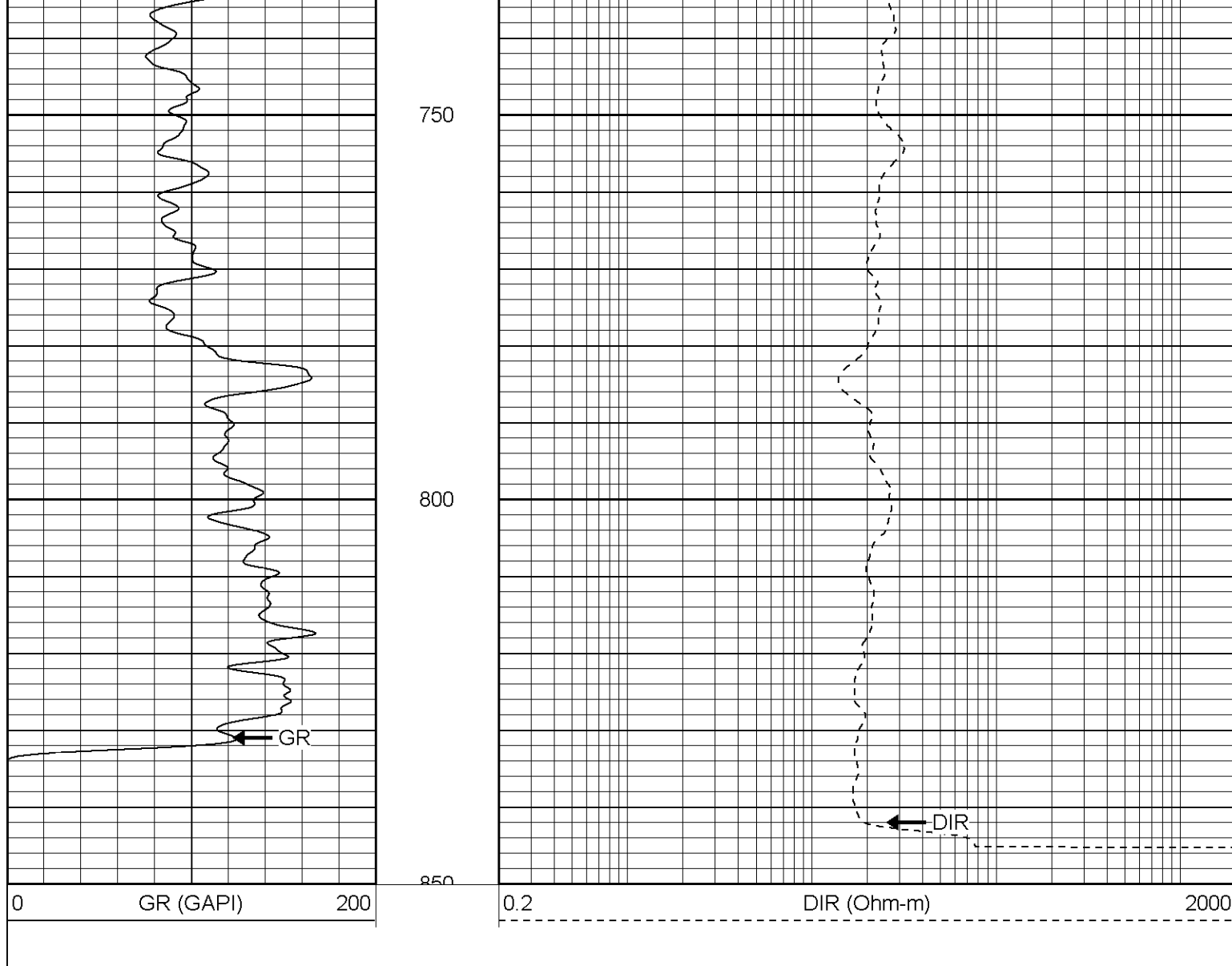
Patterson

Main Pass

Database File: predator.db
Dataset Pathname: pass2.1
Presentation Format: iel
Dataset Creation: Wed Oct 05 14:28:52 2005 by Calc Warrior 7.0 STD Ope
Charted by: Depth in Feet scaled 1:240

0	GR (GAPI)	200	0.2	DIR (Ohm-m)	2000
---	-----------	-----	-----	-------------	------

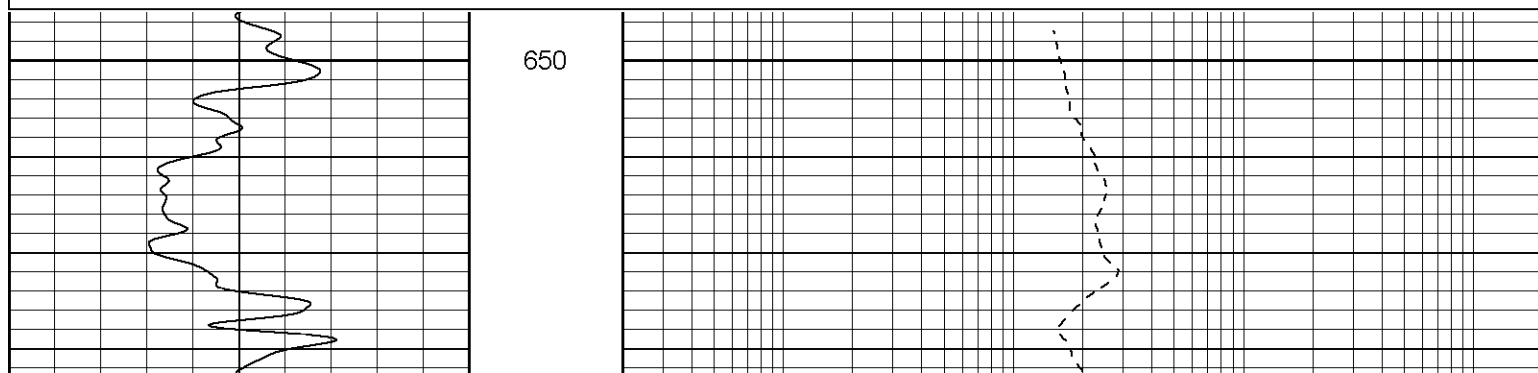
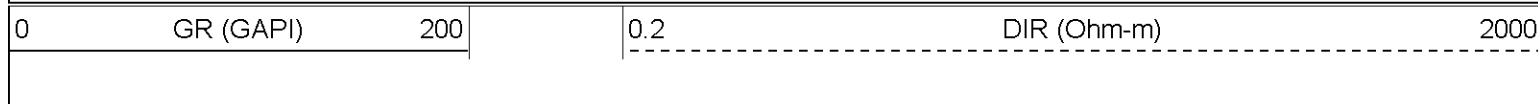


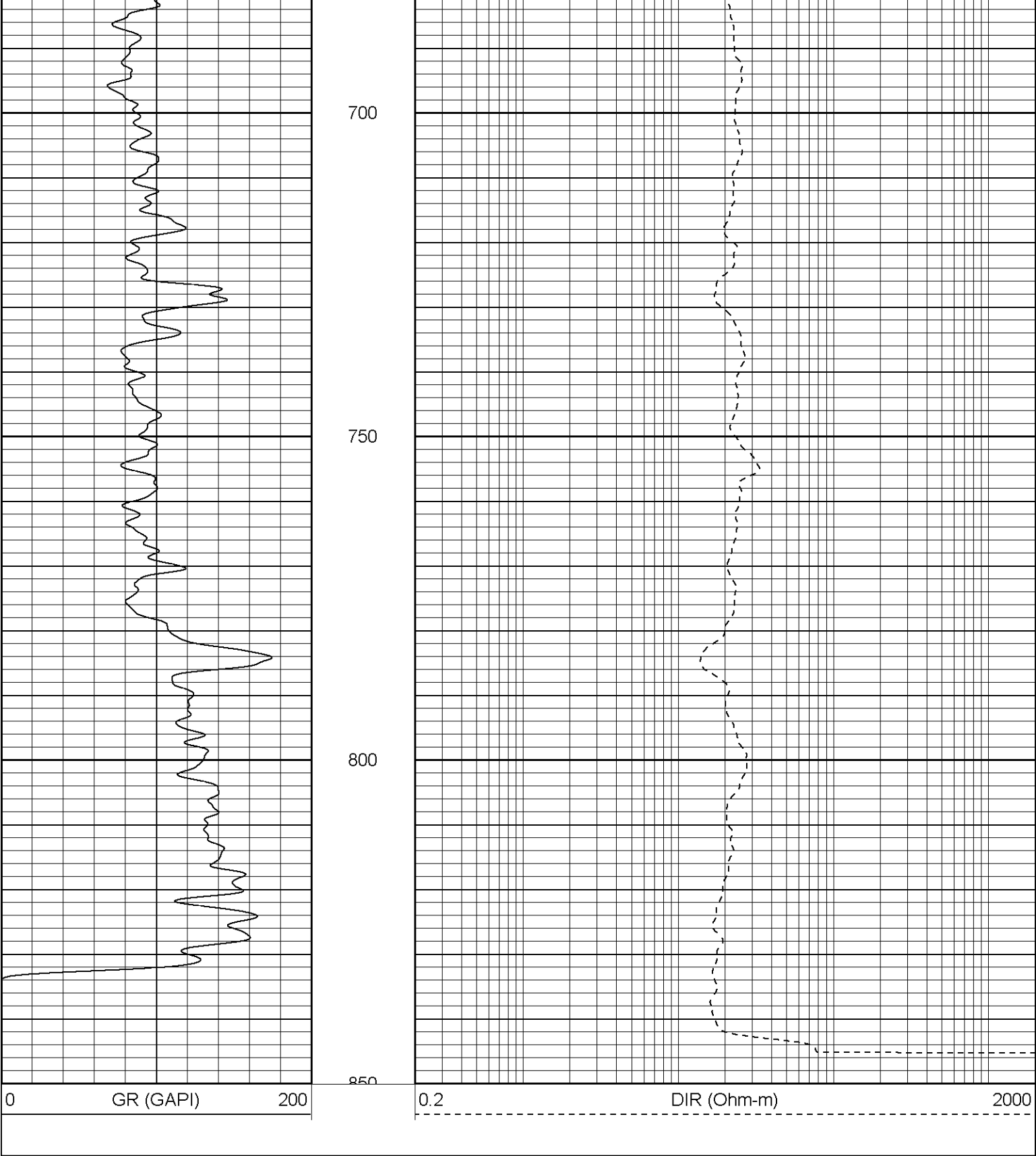


Patterson

Repeat Section

Database File: predator.db
 Dataset Pathname: pass1.1
 Presentation Format: iel
 Dataset Creation: Wed Oct 05 14:28:13 2005 by Calc Warrior 7.0 STD Ope
 Charted by: Depth in Feet scaled 1:240





Induction Tool Calibration Report			
Serial Number:		106	
Tool Model:		G	
Downhole Cal Performed:		Tue Sep 13 18:52:33 2005	
Surface Cal Performed:		Mon Sep 12 13:52:08 2005	
Surface Calibration:	Air	Loop	
Conductivity Reference:	0.000	450.000	mmho
Conductivity Reading:	-0.060	0.634	V
Internal Reference:	Zero	Cal	

Internal Reference:		2001	500.000	mmho
Conductivity Reference:		0.000	0.633	V
Conductivity Reading:		0.002		
Downhole Calibration:		Internal Zero	Internal Cal	
Conductivity Reference:		0.004	449.717	mmho
Conductivity Reading:		37.351	470.551	V
Short Normal Reference:		0.000	17.000	Ohm-m
Short Normal Reading:		0.006	0.207	V
Results:		Gain	Offset	
Loop Conductivity:		648.669	38.920	
Downhole Correction:		1.038	-38.770	
Short Normal Resistivity:		95.000	0.000	

Gamma Ray Calibration Report				
Serial Number:		2001		
Tool Model:		OH		
Performed:		Wed Oct 05 13:37:01 2005		
Calibrator Value:		1.0	GAPI	
Background Reading:		0.0	cps	
Calibrator Reading:		1.0	cps	
Sensitivity:		0.2800	GAPI/cps	

Sensor	Offset (ft)	Schematic	Description	Len (ft)	OD (in)	Wt (lb)
CHD	19.50		None	0.75	1.50	5.00
GR	17.25		GR-OH (2001) SIE	3.50	3.25	40.00
DIC	6.89		IEL-G (106)	15.25	4.00	178.00
SP	1.50					
SN	1.00					
		Dataset:	/field/well/run1/_plots/_/jobs_/sil			
		Total Length:	19.50 ft			
		Total Weight:	223.00 lb			
		O.D.	4.00 in			