



SUPERIOR
Black Lick, Pa.
Mercer, Pa.
Wooster, Oh.
Cleveland, Ok.
Trinidad, Co.

SINGLE INDUCTION LOG

Company	Pioneer Natural Resources	Company	Pioneer Natural Resources
Well	Tanana 33-4	Well	Tanana 33-4
Field	Purgatorie River	Field	Purgatorie River
County	Las Animas	County	Las Animas
State	CO	State	CO
Location:	API # : 05-071-09294-00 2689' FSL & 1962' FEL	Other Services	cdl
Permanent Datum	SEC 4 TWP 32S RGE 66W	Elevation	
Log Measured From	Ground level	K.B. 7585'	
Drilling Measured From	Kelly Bushing 9' A. G. L. Kelly Bushing	D.F. -----	
		G.L. 7576'	
Date	10-1-07		
Run Number	One		
Depth Driller	2550'		
Depth Logger	2538'		
Bottom Logged Interval	2536'		
Top Log Interval	Surface Casing		
Casing Driller	8.625@640'		
Casing Logger	642'		
Bit Size	7 7/8"		
Type Fluid in Hole	Water		
Density / Viscosity	///		
pH / Fluid Loss	///		
Source of Sample	///		
Rm @ Meas. Temp	///		
Rmf @ Meas. Temp	///		
Rmc @ Meas. Temp	///		
Source of Rmf / Rmc	///		
Rm @ BHT	///		
Time Circulation Stopped	6:30 AM		
Time Logger on Bottom	9:00 AM		
Maximum Recorded Temperature	106 DEG F		
Equipment Number	T0700		
Location	Trinidad		
Recorded By	Karl Lucero		
Witnessed By	Mr. Jeremy Odell		

>>> Fold Here >>>

All interpretations are opinions based on inferences from electrical or other measurements and we cannot and do not guarantee the accuracy or correctness of any interpretation, and we shall not, except in the case of gross or willful negligence on our part, be liable or responsible for any loss, costs, damages, or expenses incurred or sustained by anyone resulting from any interpretation made by any of our officers, agents or employees. These interpretations are also subject to our general terms and conditions set out in our current Price Schedule.

Comments

Density Porosity Presented On Sandstone Matrix
ABHV Calculated for 4 1/2 Casing.

Well Directions:

125 to exit 30 to Gulnare, Take left at Gravel Pit, stay right at creek, top of hill, 3rd left to drive through locati



SUPERIOR

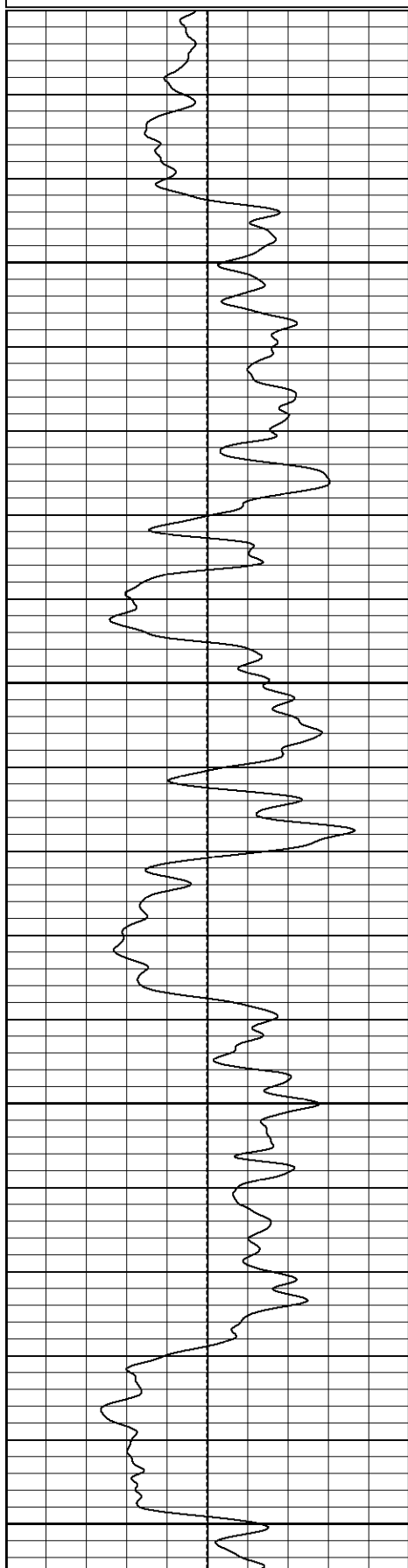
Black Lick, Pa.
Mercer, Pa.
Wooster, Oh.
Cleveland, Ok.
Trinidad, Co.

Main Pass

Database File: tanana.db
Dataset Pathname: pass2.1
Presentation Format: iel
Dataset Creation: Mon Oct 01 10:05:50 2007 by Calc Open-Cased 070814
Charted by: Depth in Feet scaled 1:240

0	GR (GAPI)	200
-100	SP (mV)	100

0.2	DIR (Ohm-m)	2000
0.2	SN (Ohm-m)	2000

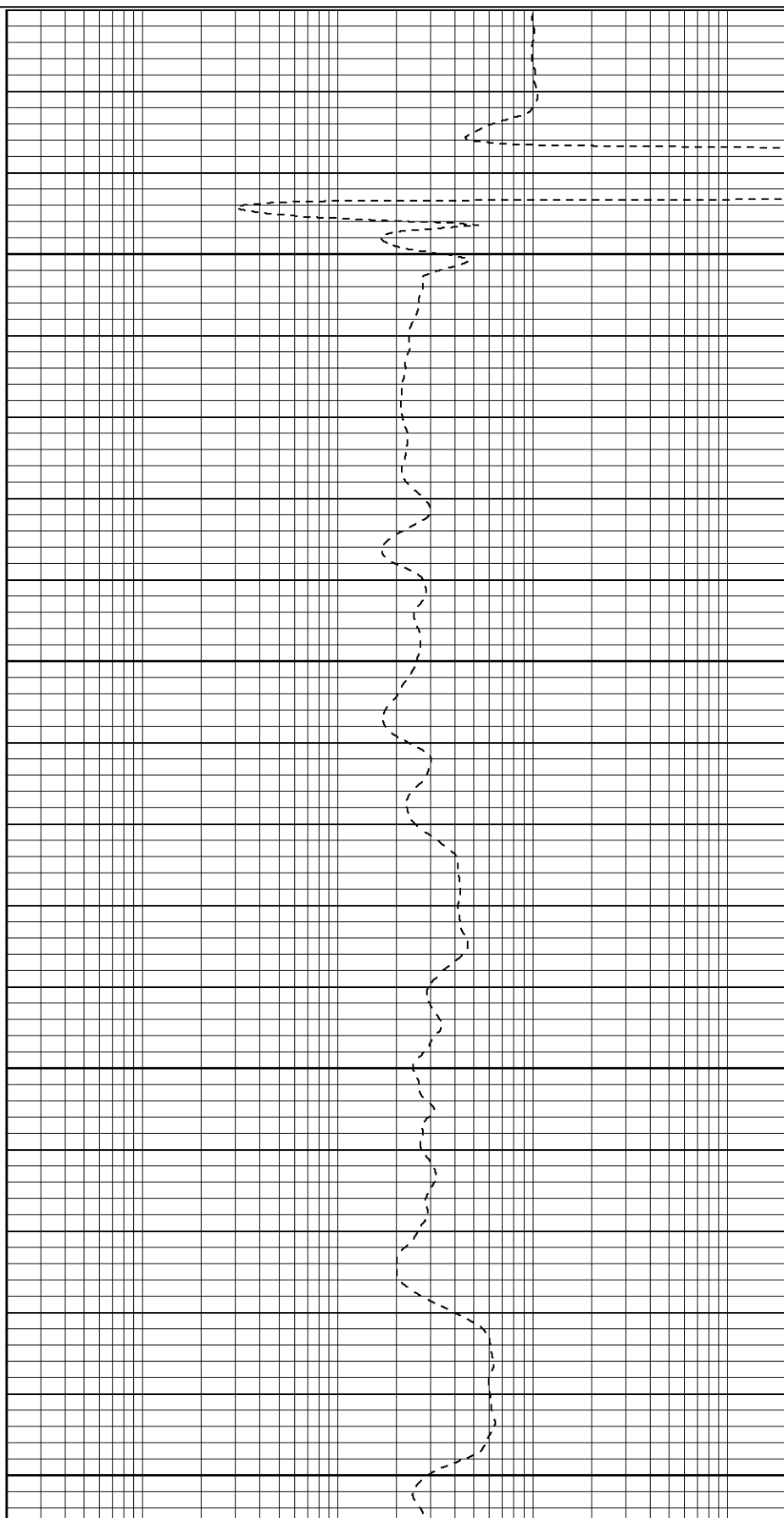


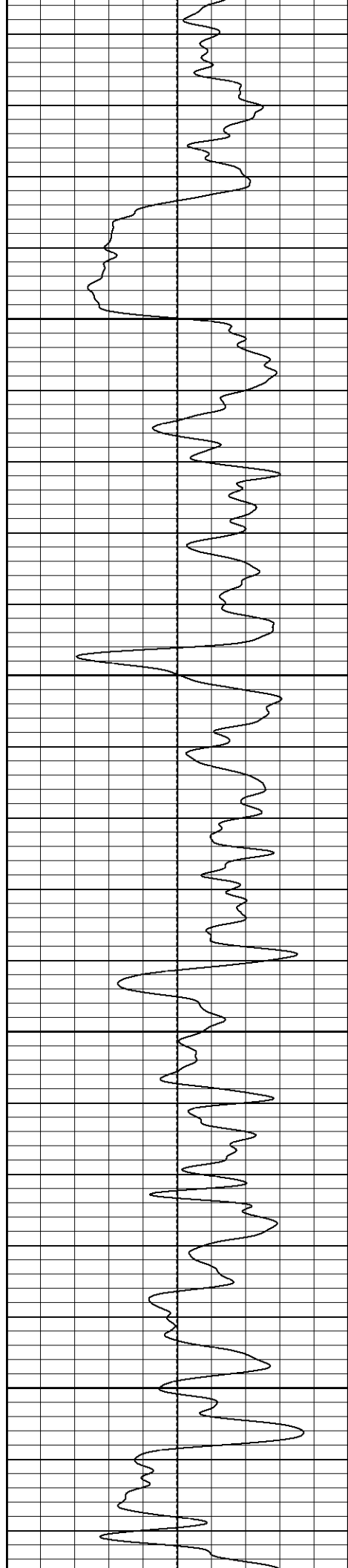
650

700

750

800



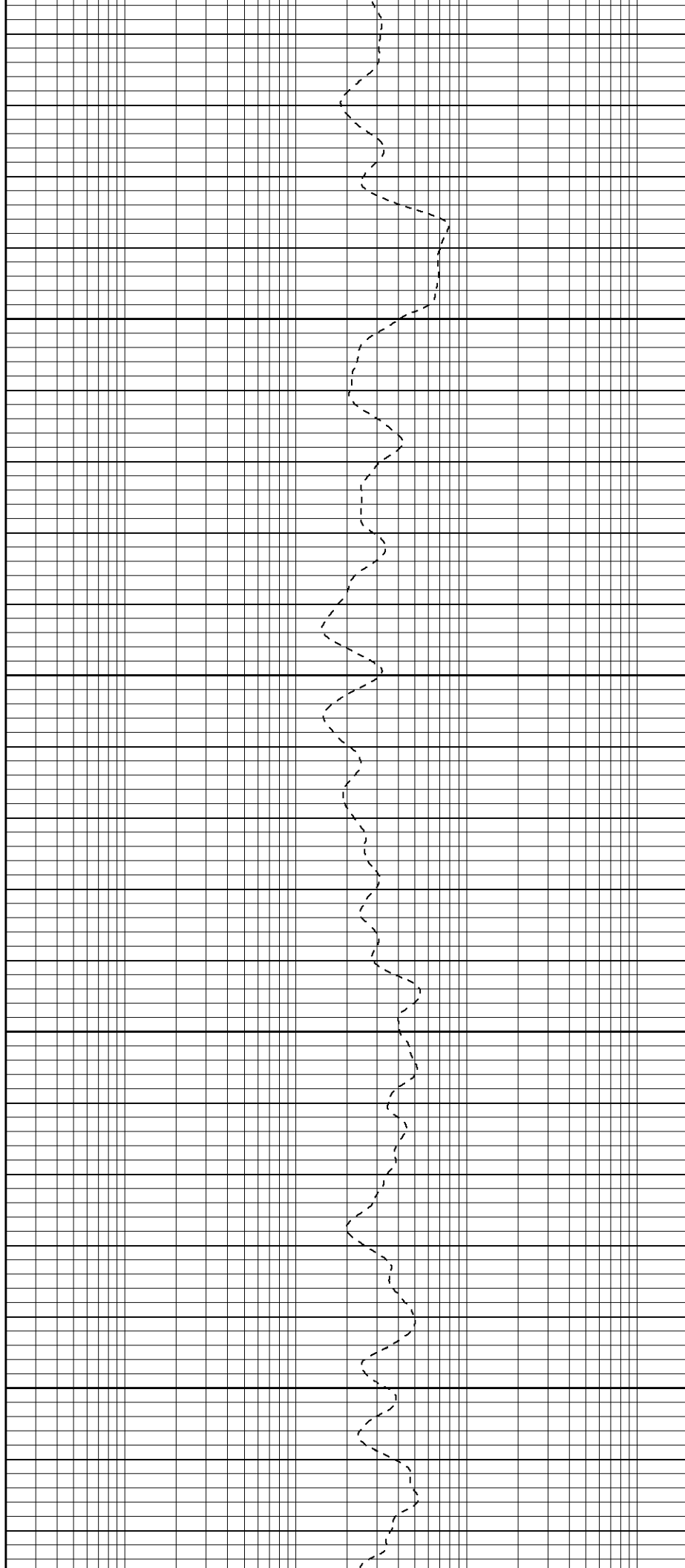


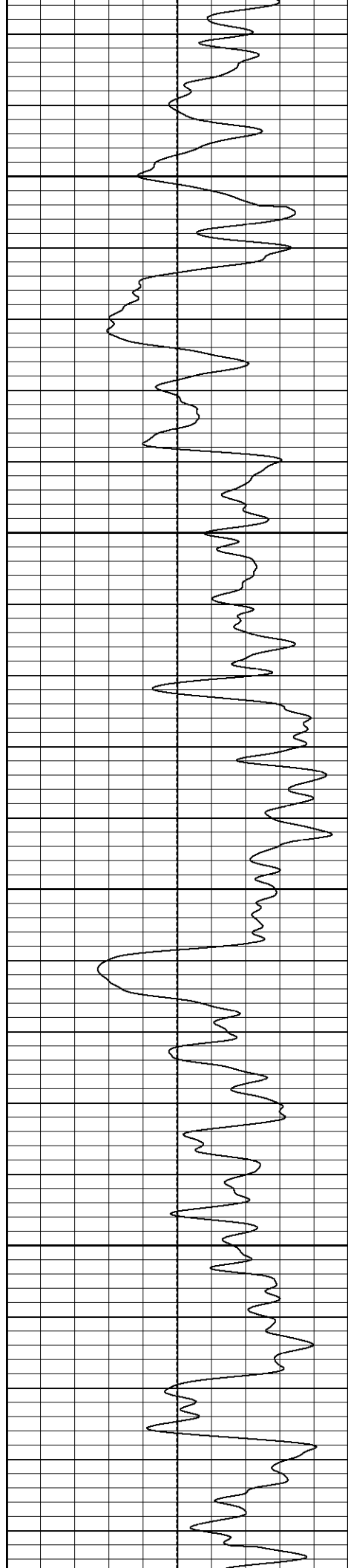
850

900

950

1000



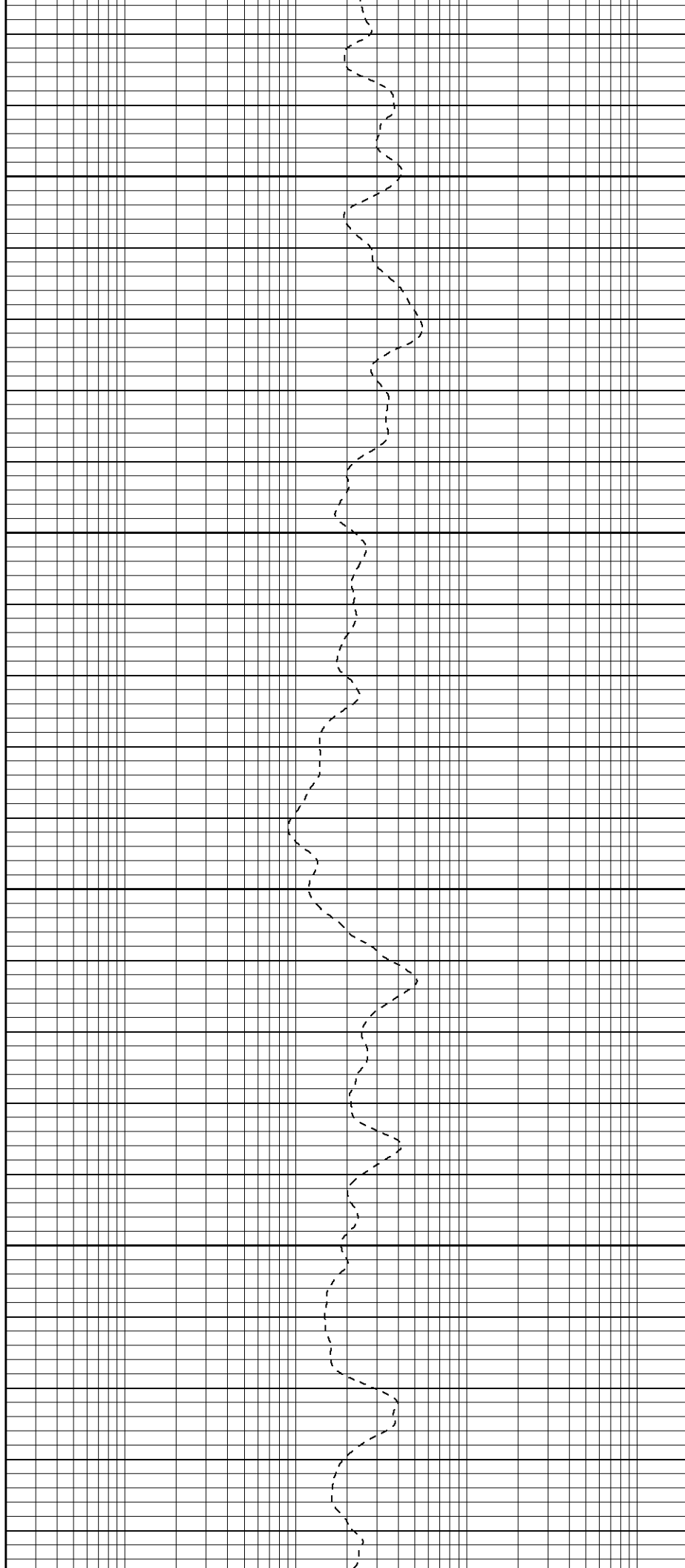


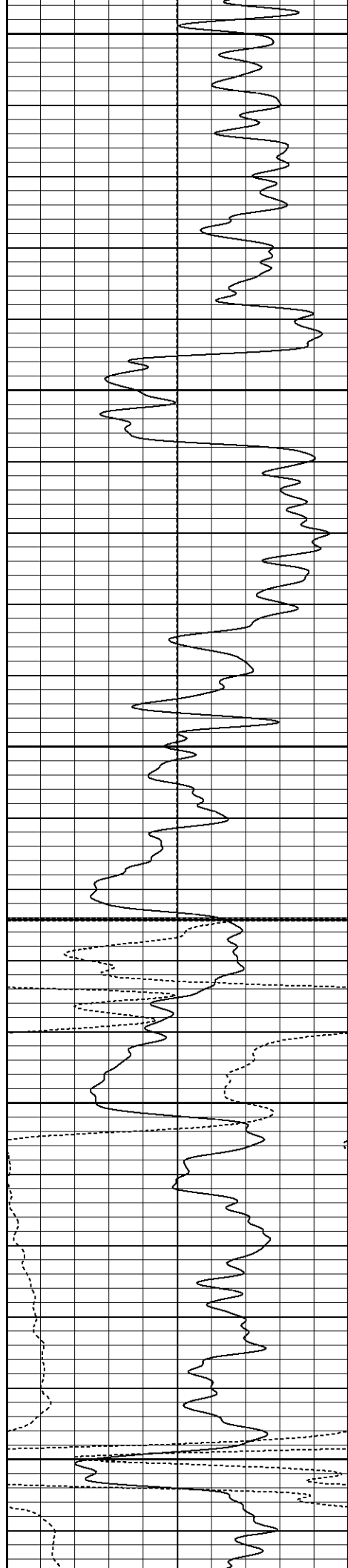
1050

1100

1150

1200





1250

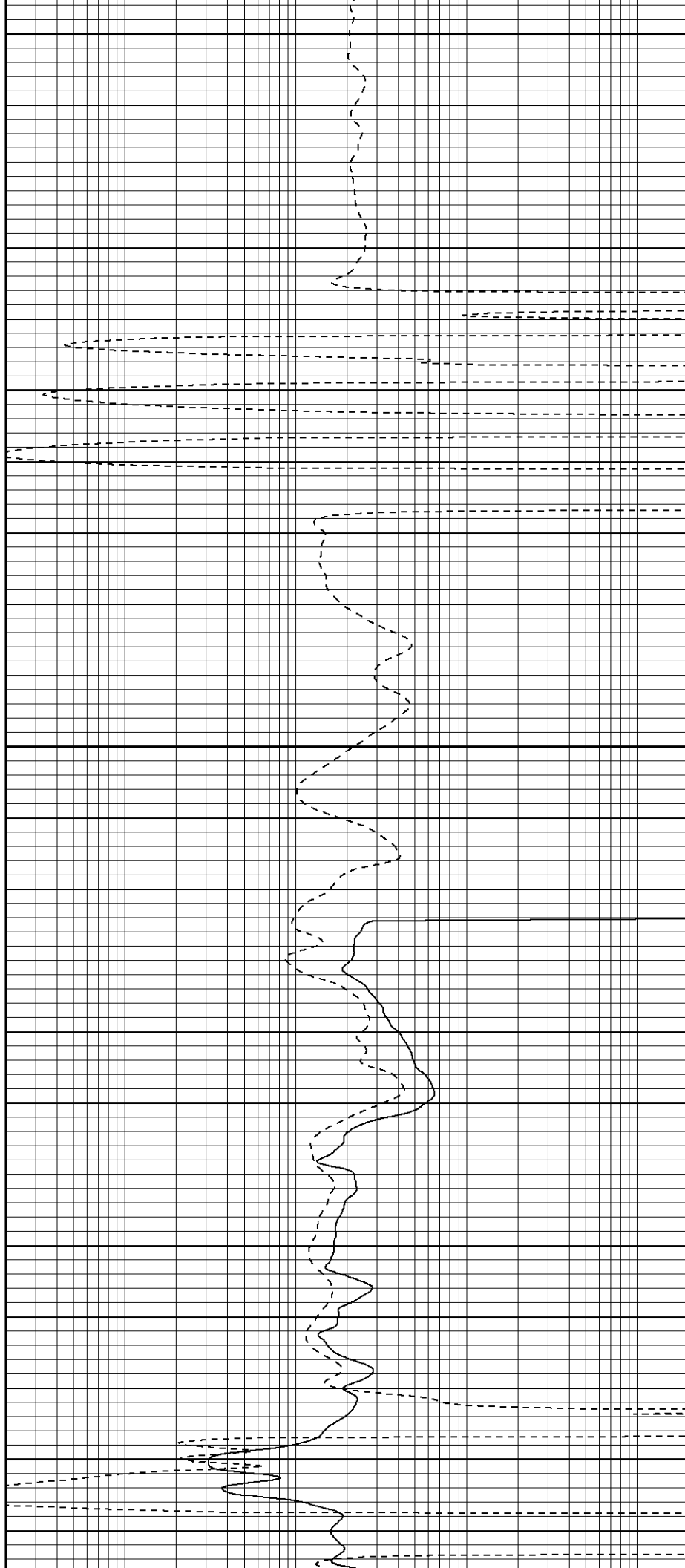
1300

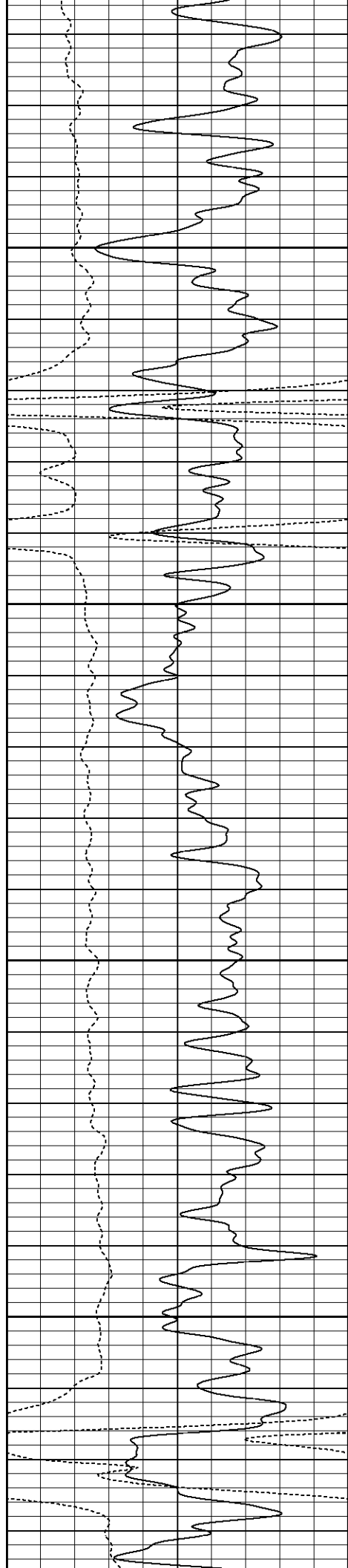
1350

Fluid Level

1400

1450



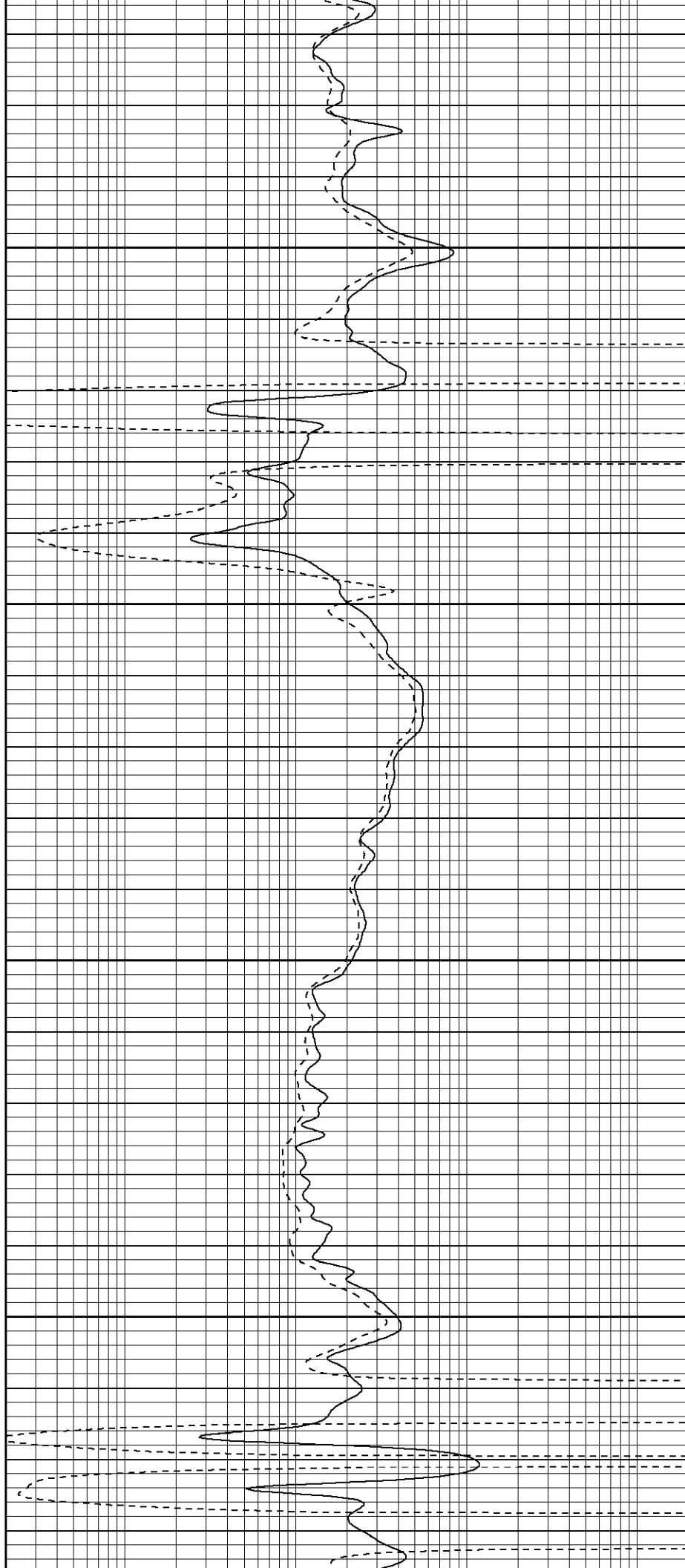


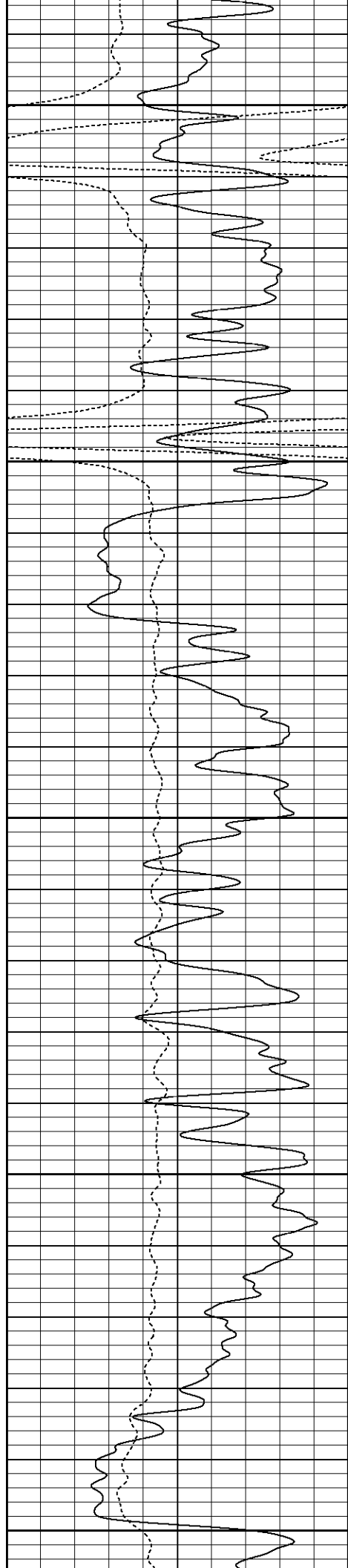
1500

1550

1600

1650





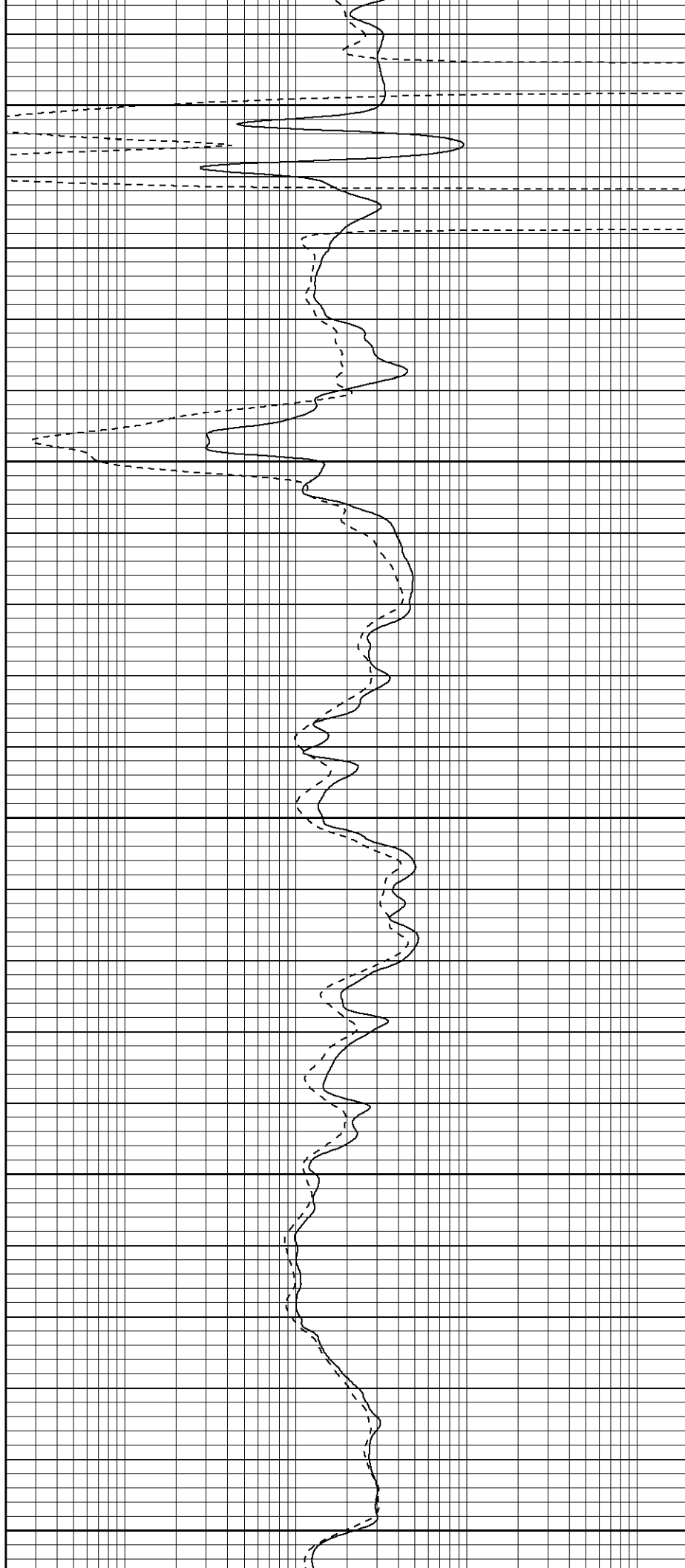
1700

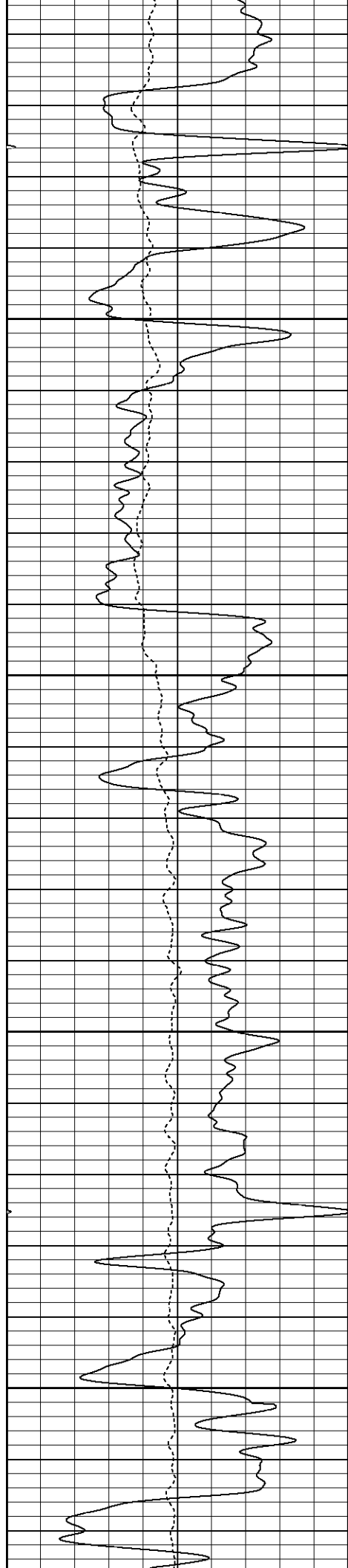
1750

1800

1850

1900



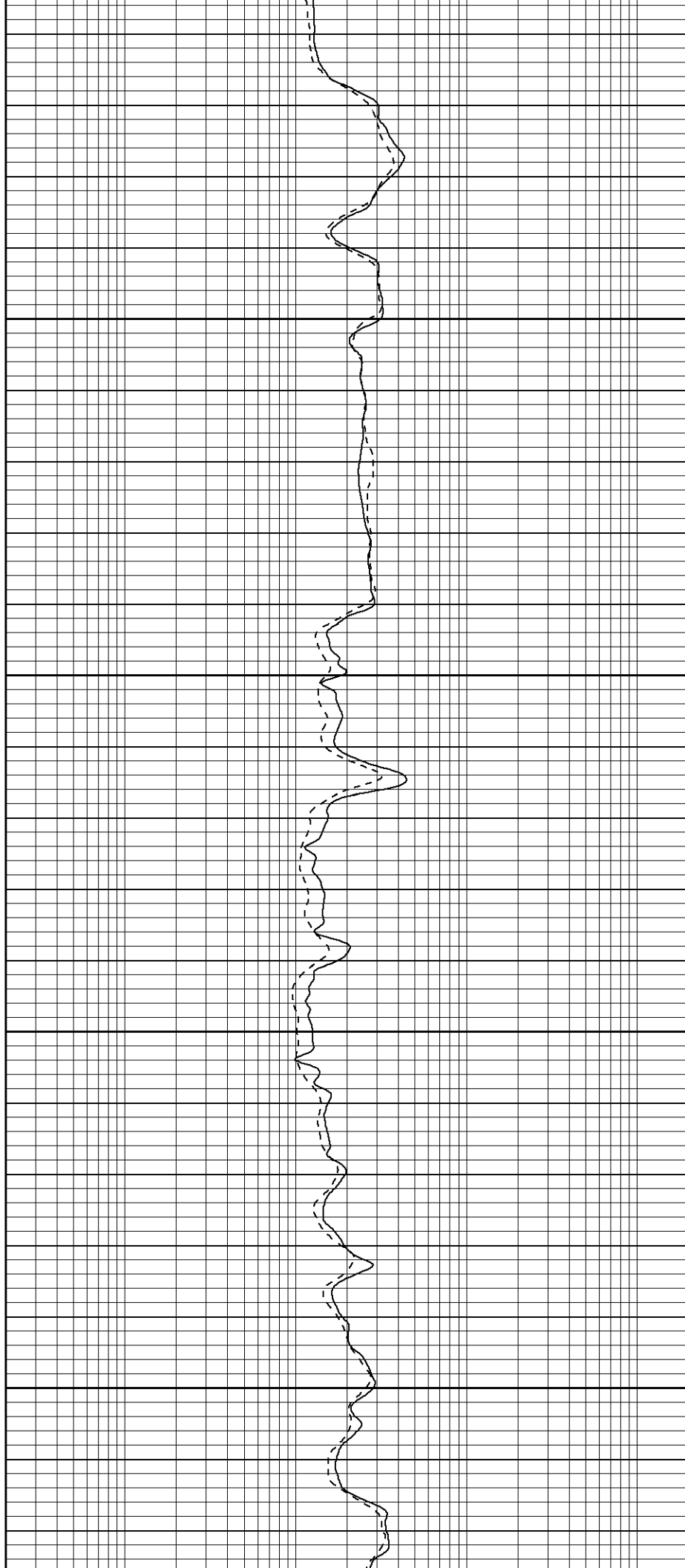


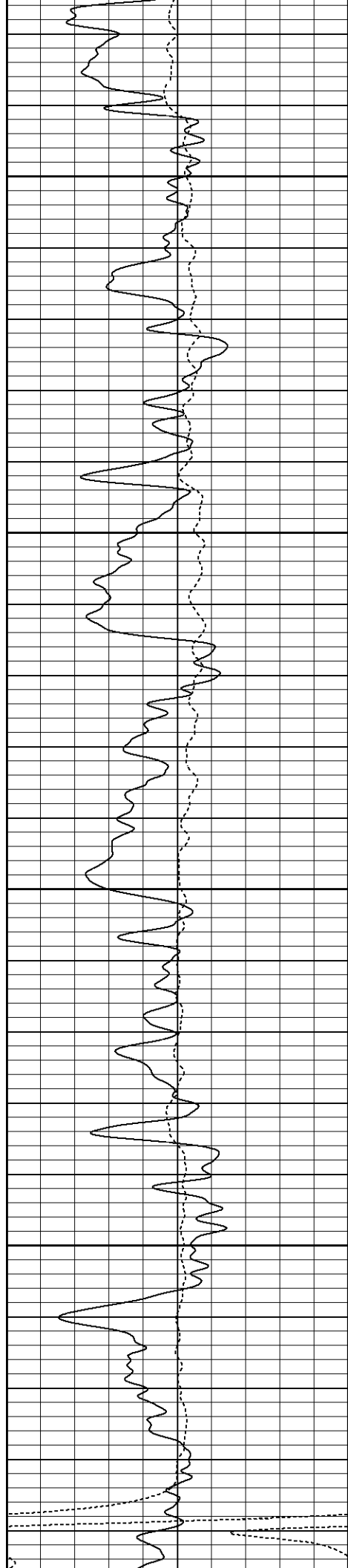
1950

2000

2050

2100



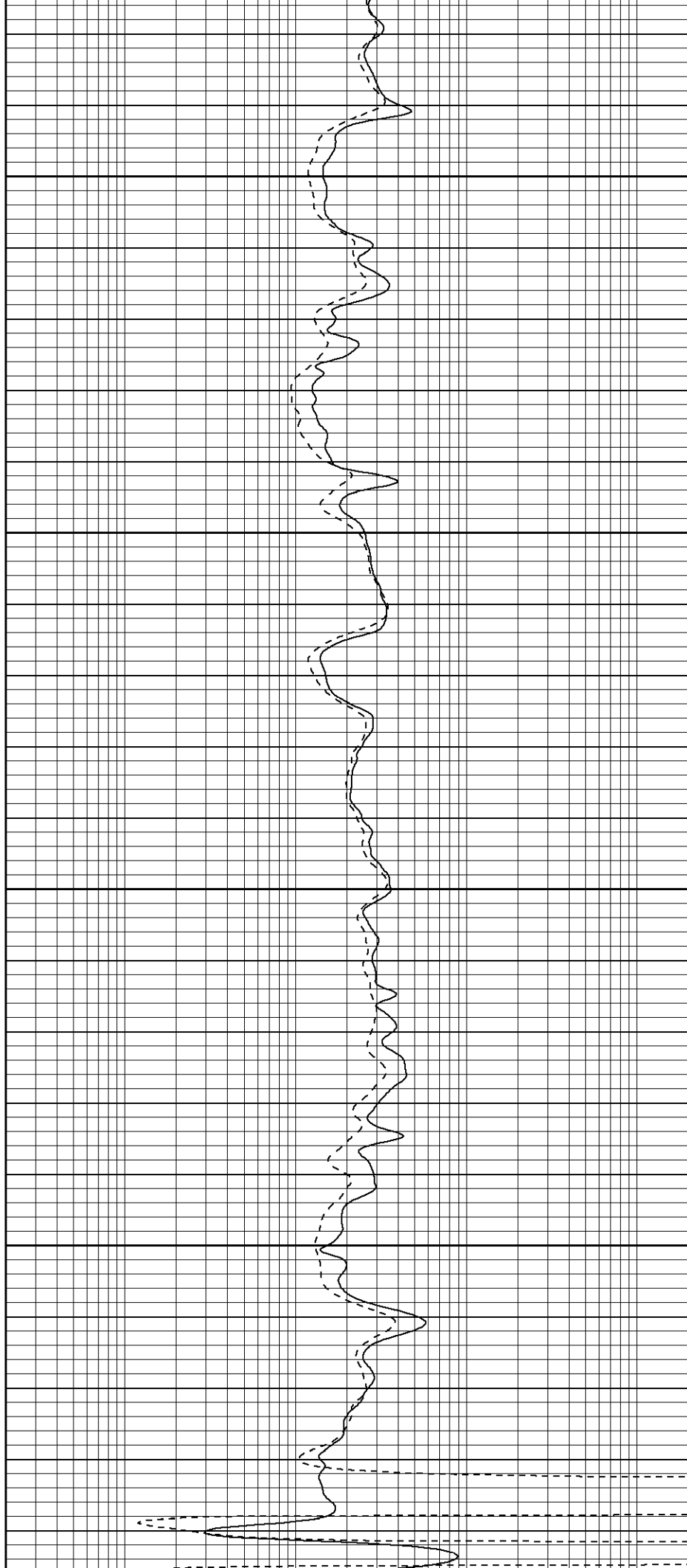


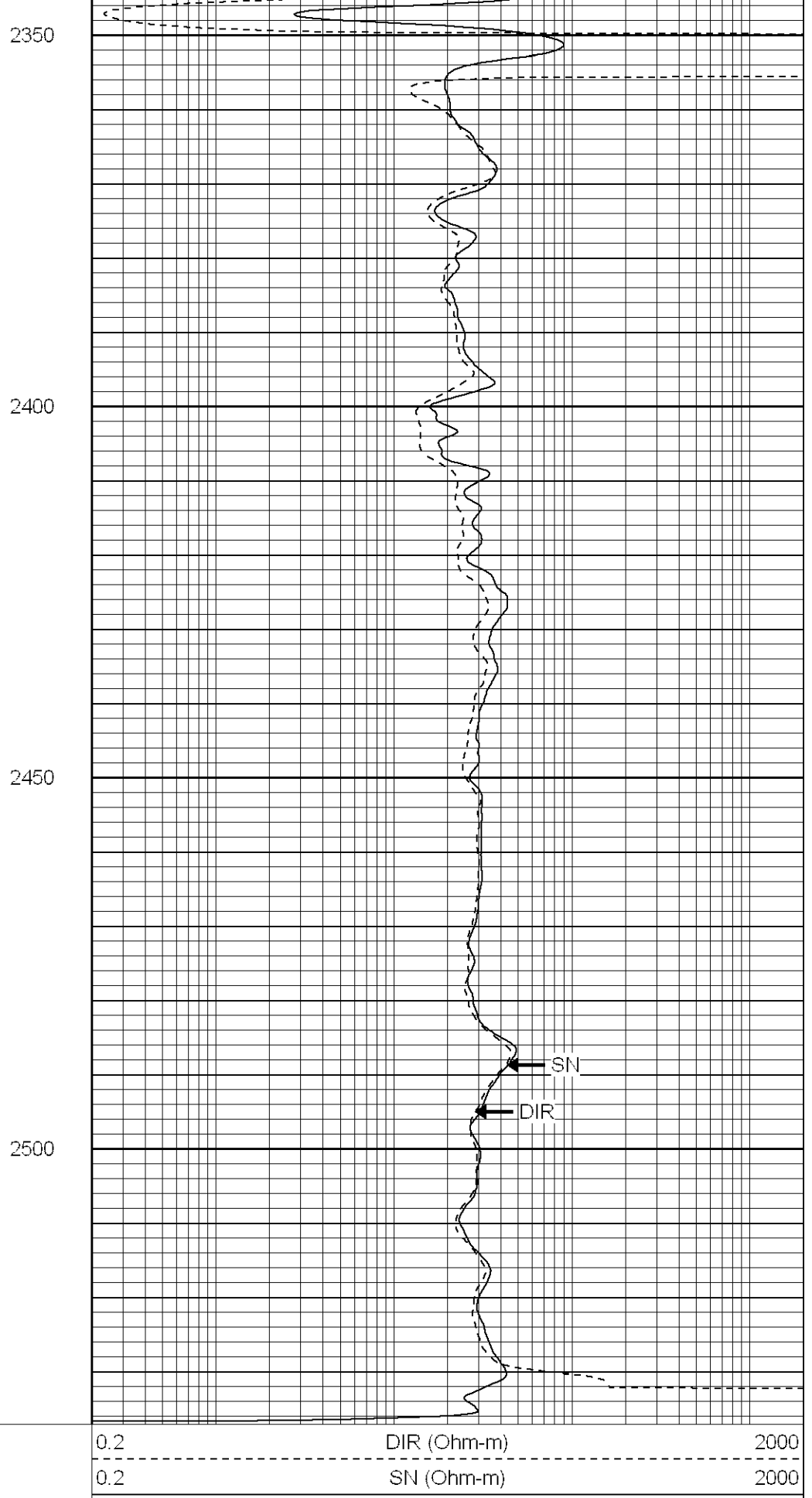
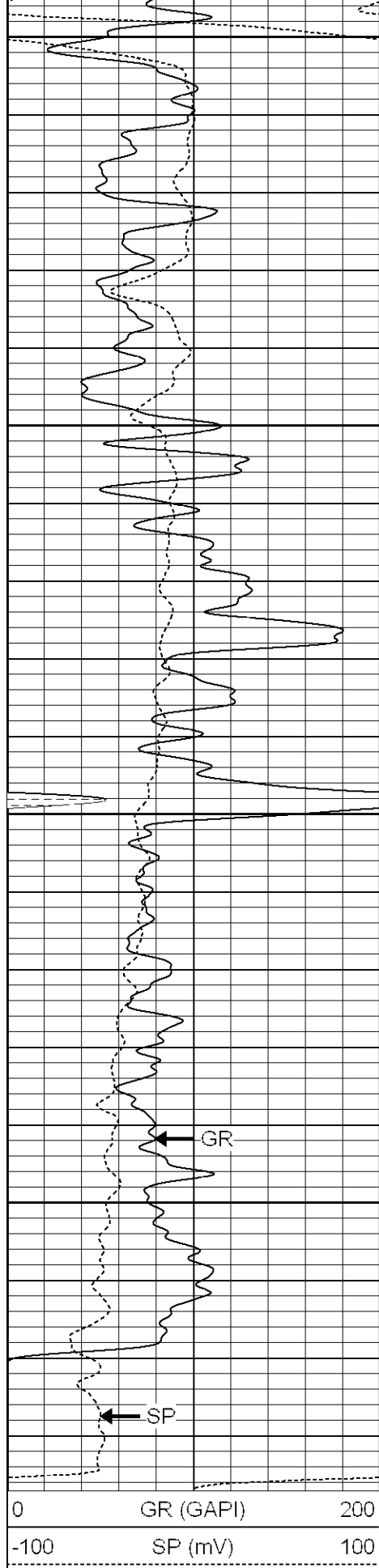
2150

2200

2250

2300





SUPERIOR



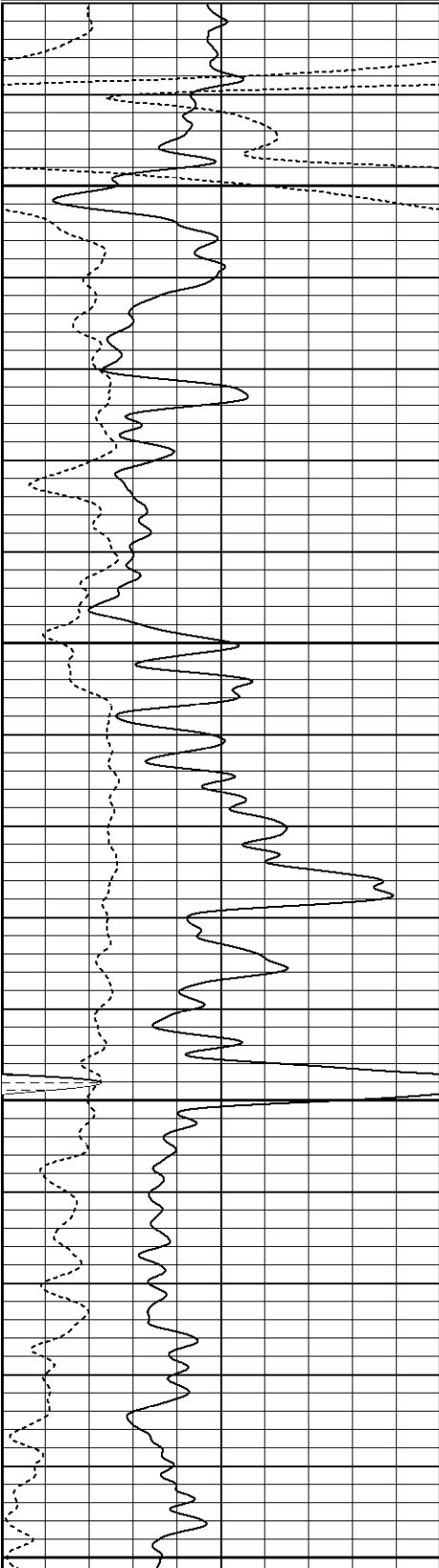
Black Lick, Pa.
Mercer, Pa.
Wooster, Oh.
Cleveland, Ok.
Trinidad, Co.

Repeat Pass

Database File: tanana.db
Dataset Pathname: pass1.1
Presentation Format: iel
Dataset Creation: Mon Oct 01 10:10:13 2007 by Calc Open-Cased 070814
Charted by: Depth in Feet scaled 1:240

0	GR (GAPI)	200
-100	SP (mV)	100

0.2	DIR (Ohm-m)	2000
0.2	SN (Ohm-m)	2000

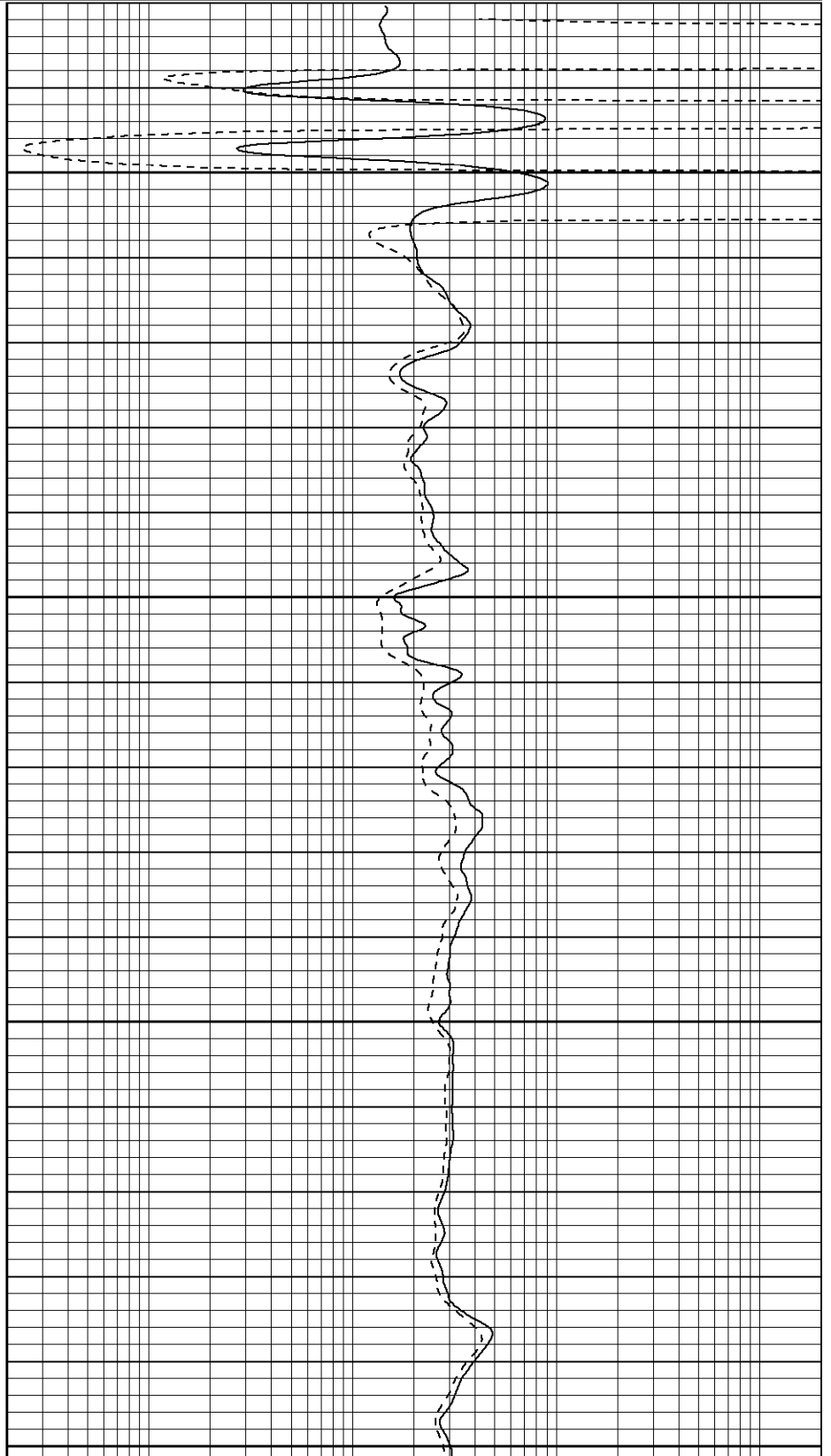


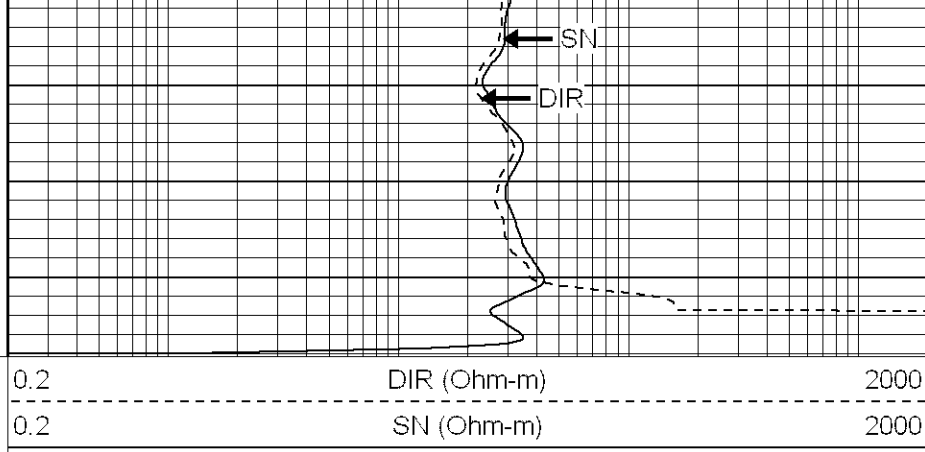
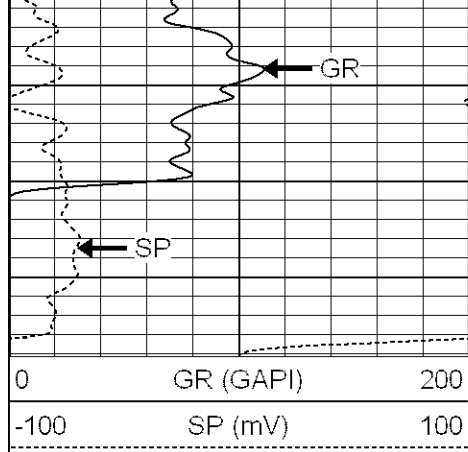
2350

2400

2450


2500





Calibration Report				
Database File:	tanana.db			
Dataset Pathname:	pass1			
Dataset Creation:	Mon Oct 01 08:56:32 2007 by Log Open-Cased 070814			
Induction Tool Calibration Report				
Serial Number:	902			
Tool Model:	G			
Downhole Cal Performed:	Wed Sep 12 11:48:50 2007			
Surface Cal Performed:	Tue Sep 18 07:45:53 2007			
Surface Calibration:	Air	Loop		
Conductivity Reference:	0.000	450.000	mmho	
Conductivity Reading:	-0.040	0.647	V	
Internal Reference:	Zero	Cal		
Conductivity Reference:	0.000	500.000	mmho	
Conductivity Reading:	0.005	0.647	V	
Downhole Calibration:	Internal Zero	Internal Cal		
Conductivity Reference:	0.150	449.850	mmho	
Conductivity Reading:	0.081	450.034	V	
Short Normal Reference:	0.000	17.000	Ohm-m	
Short Normal Reading:	0.004	0.204	V	
Results:	Gain	Offset		
Loop Conductivity:	654.978	26.199		
Downhole Correction:	0.999	0.069		
Short Normal Resistivity:	84.930	-0.346		
Gamma Ray Calibration Report				
Serial Number:	2000			
Tool Model:	P2000			
Performed:	Tue Sep 18 07:40:52 2007			
Calibrator Value:	200.0	GAPI		
Background Reading:	54.0	cps		
Calibrator Reading:	219.0	cps		
Sensitivity:	0.2700	GAPI/cps		

Sensor	Offset (ft)	Schematic	Description	Len (ft)	OD (in)	Wt (lb)
GR	17.75		GR-P2000 (2000)	3.50	3.25	40.00

						
DIC	6.89		IEL-G (902)	15.25	4.00	178.00
SP	1.50					
SN	1.00					
<div>Dataset: tanana.db: field/well/run1/pass1</div> <div>Total Length: 18.75 ft</div> <div>Total Weight: 218.00 lb</div> <div>O.D.: 4.00 in</div>						