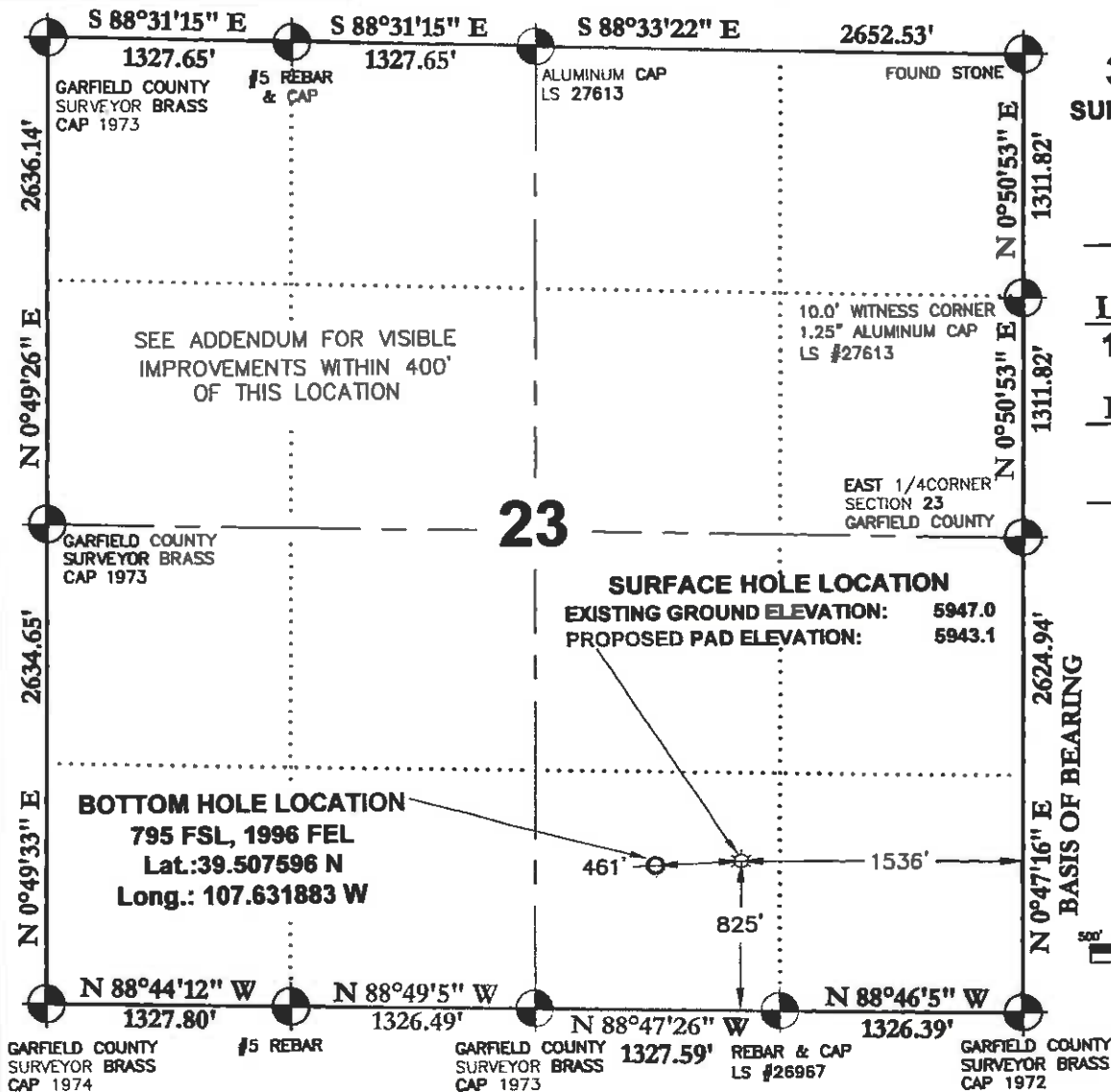
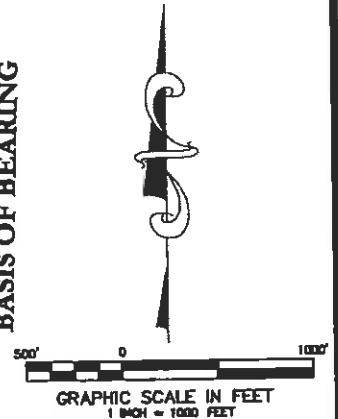


WERNER
34C-23-692
SURFACE LOCATION
825 FSL
1536 FEL

LATITUDE
39.507683 N
LONGITUDE
107.630254 W
NORTHING
1616848.9
EASTING
2398996.1



SURVEYORS STATEMENT:

I, JAMES A. KALMON, A REGISTERED LAND SURVEYOR IN THE STATE OF COLORADO DO HEREBY CERTIFY THAT THE SURVEY SHOWN HEREON WAS PREPARED UNDER MY DIRECT SUPERVISION AND CHECKING THAT THIS MAP IS A TRUE REPRESENTATION THEREOF.

JAMES A. KALMON, COLORADO REGISTRATION NO. 38050
FOR AND ON BEHALF OF ECLIPSE SURVEYING, INC.

LEGEND:

FIELD LOCATED SECTION MONUMENTS AS DESCRIBED
SURFACE HOLE LOCATION
BOTTOM HOLE LOCATION
CALCULATED SECTION CORNER LOCATION

NOTES:

- 1) ELEVATIONS BASED ON N.A.V.D. 1988
- 2) LATITUDES AND LONGITUDES ARE BASE ON NAD 83, COLORADO CENTRAL ZONE.
- 3) WELL MEASURED 90° FROM SECTION LINES.
- 4) THE BASIS OF BEARING IS FROM GPS OBSERVATION RESULTING IN THE BEARING BETWEEN THE FOUND MONUMENTS AS SHOWN.
- 5) ELEVATION MASK SET TO 15"
- 6) PDOP SET TO 6



ECLIPSE
surveying

111 E. THIRD ST., SUITE 208, RIFLE, CO 81650
(970) 625-3048

REV. DATE: 01/15/10
SURVEY DATE: 10/08/09
RELEASE DATE: 10/21/09
SCALE: 1" = 1000'
SHEET: 1 of 7
PROJECT #: WERNER

Bill Barrett Corporation

SW 1/4 SE 1/4, SECTION 23
T. 6 S., R. 92 W. of the 6th. P.M.
GARFIELD COUNTY, COLORADO