

**Patterson**

**CEMENT BOND  
GAMMA RAY**

Company XTO Energy Inc.  
Well Golden Eagle 32-10  
Field Purgatorie River  
County Las Animas  
State CO

Company XTO Energy Inc.  
Well Golden Eagle 32-10  
Field Purgatorie River  
County Las Animas State CO

Location: API #: 05 071 08651 00

2510' FSL & 2185' FEL

SEC 32 TWP 33S RGE 67W

Permanent Datum Ground Level Elevation 7752'  
Log Measured From Ground Level  
Drilling Measured From Ground Level

Elevation  
K.B. -----  
D.F. -----  
G.L. 7752'

Date 3/6/06

Run Number	one
Depth Driller	2455'
Depth Logger	2369'
Bottom Logged Interval	2365'
Top Log Interval	Surf.
Open Hole Size	7 7/8"
Type Fluid	water
Density / Viscosity	///
Max. Recorded Temp.	///
Estimated Cement Top	200'
Time Well Ready	5:25
Time Logger on Bottom	5:35
Equipment Number	T244
Location	Trinidad
Recorded By	Worley
Witnessed By	

Borehole Record		Tubing Record					
Run Number	Bit	From	To	Size	Weight	From	To

Casing Record	Size	Wgt/Ft	Top	Bottom
---------------	------	--------	-----	--------

Surface String	8 5/8"		00	544'
----------------	--------	--	----	------

Prot. String				
--------------	--	--	--	--

Production String	5 1/2"		00	NA
-------------------	--------	--	----	----

Liner				
-------	--	--	--	--

<<< Fold Here >>>

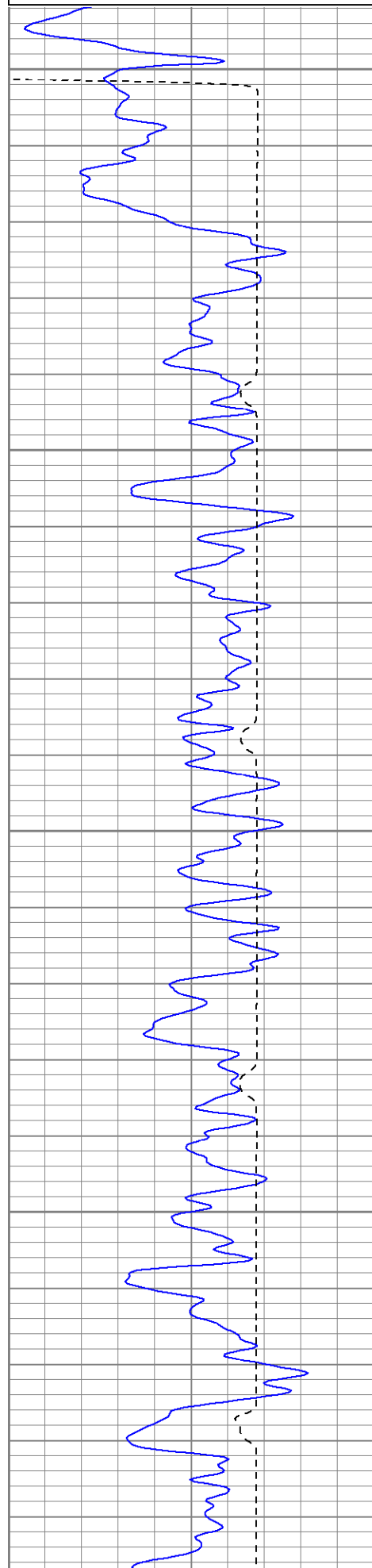
All interpretations are opinions based on inferences from electrical or other measurements and we cannot and do not guarantee the accuracy or correctness of any interpretation, and we shall not, except in the case of gross or willful negligence on our part, be liable or responsible for any loss, costs, damages, or expenses incurred or sustained by anyone resulting from any interpretation made by any of our officers, agents or employees. These interpretations are also subject to our general terms and conditions set out in our current Price Schedule.

Comments

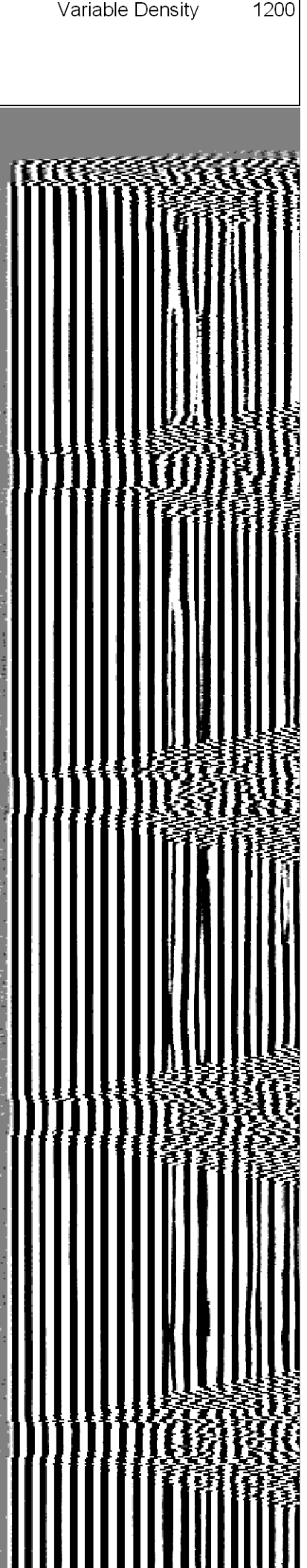
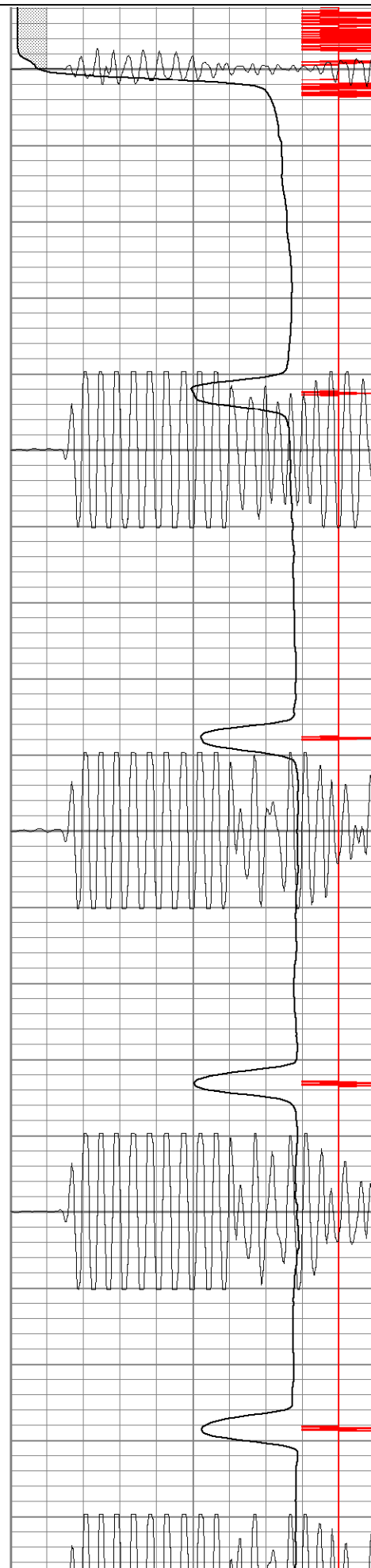
Turn At Bosque Before Weston, Turn Right AT Cherry Canyon, Stay Left At Y,  
Stay On Main Road To Gate, Go Thru Gate And Stay On Main Road For 2.4 Miles,  
Take Right, Next Left To Location.

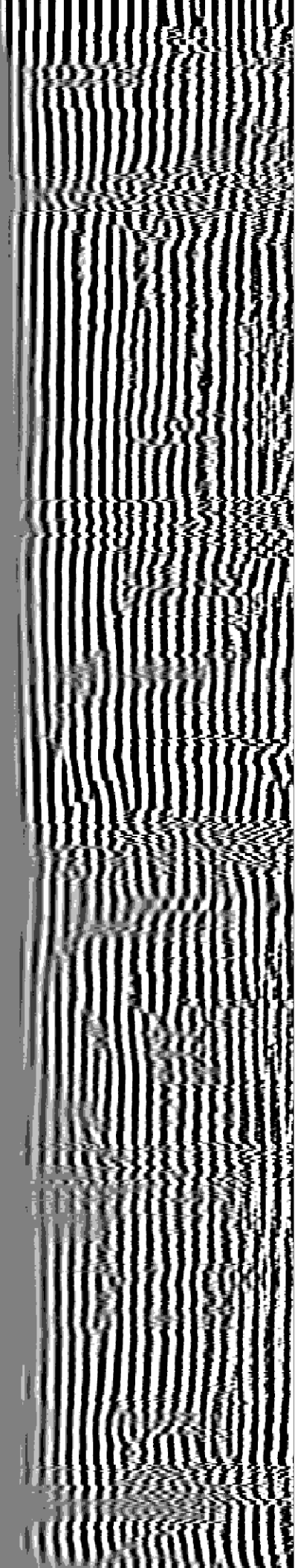
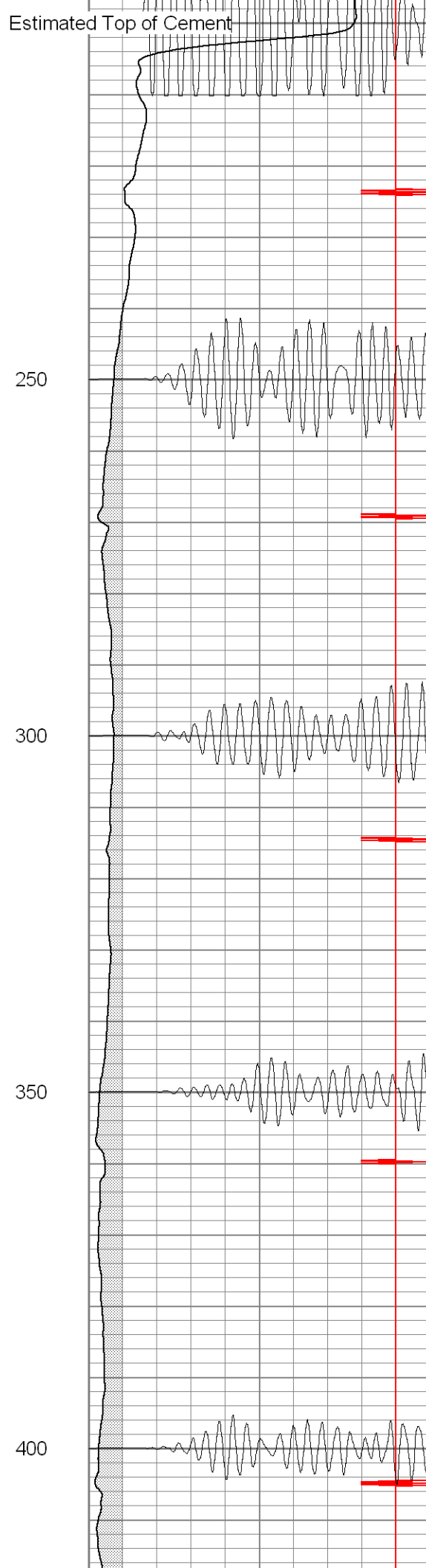
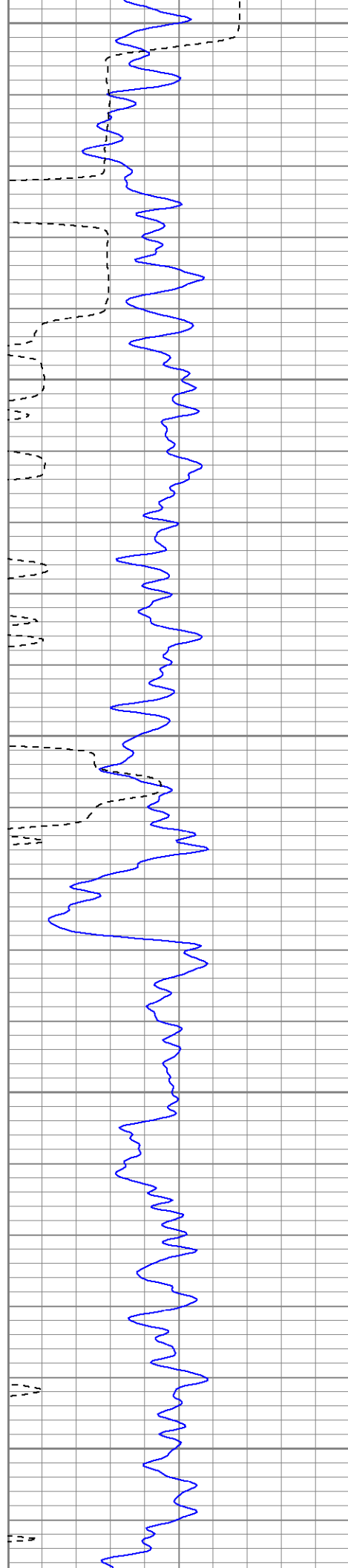
Database File: ge32-10b3606.db  
Dataset Pathname: pass2  
Presentation Format: cblrt  
Dataset Creation: Mon Mar 06 17:32:25 2006 by Log Warrior 7.0 STD Cas  
Charted by: Depth in Feet scaled 1:240

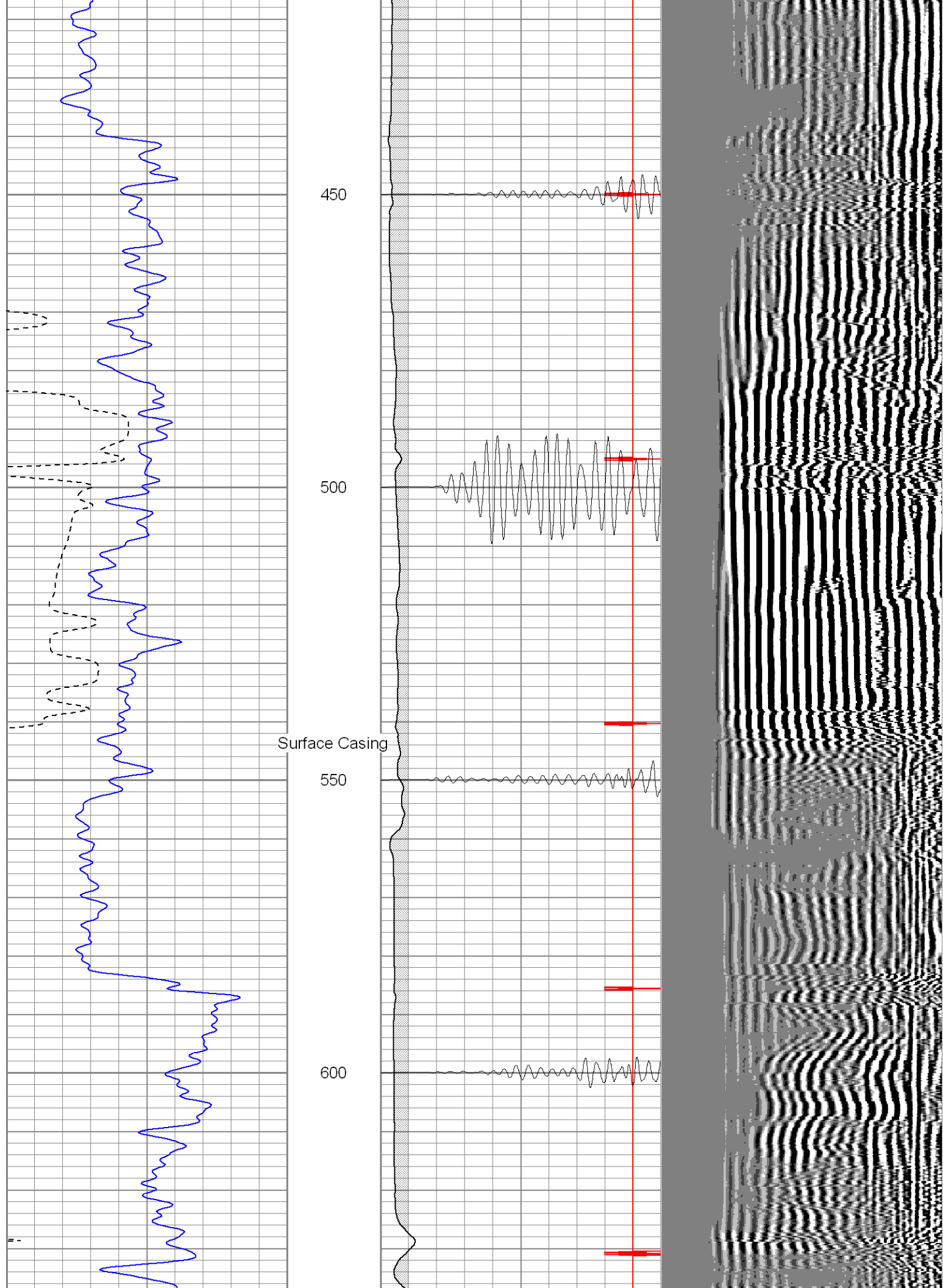
0	GR (GAPI)	200
400	TT3 (usec)	200

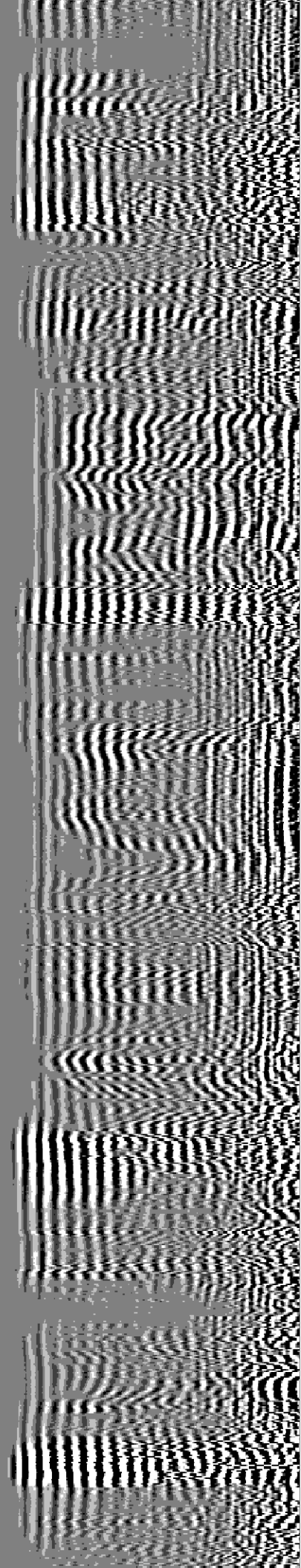
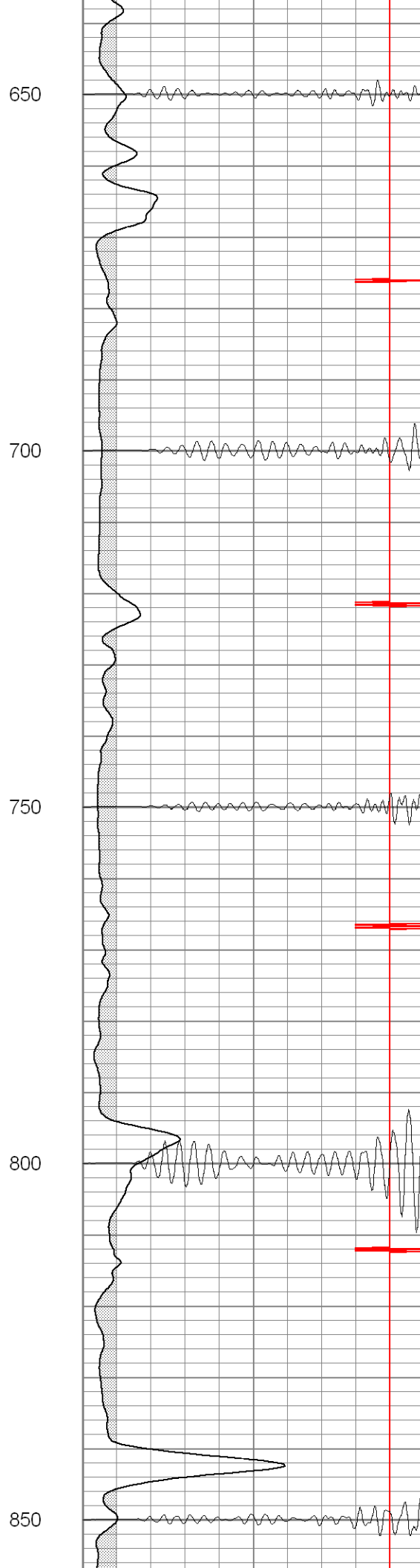
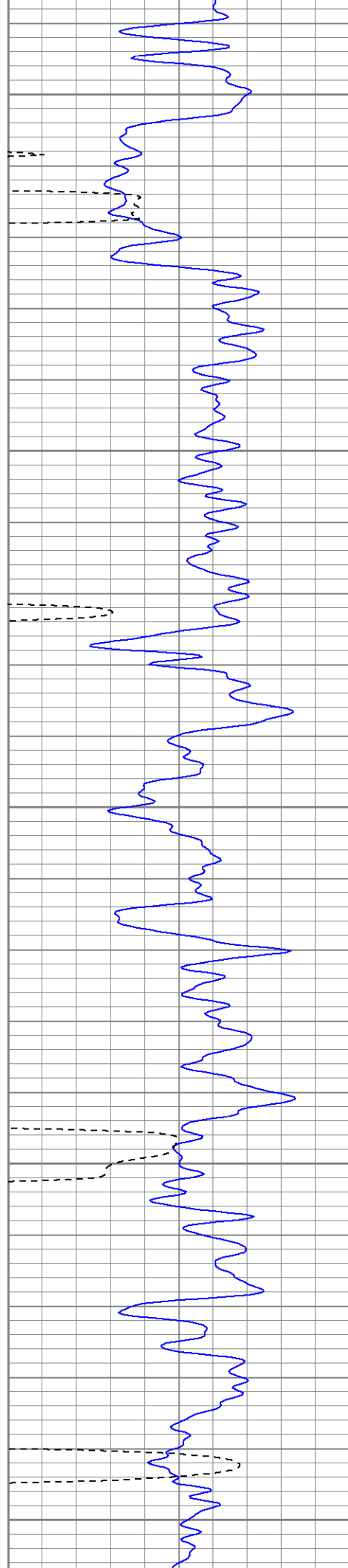


0	AMP3 (mV)	100
18	CCL	-2
200	CBL5	1200

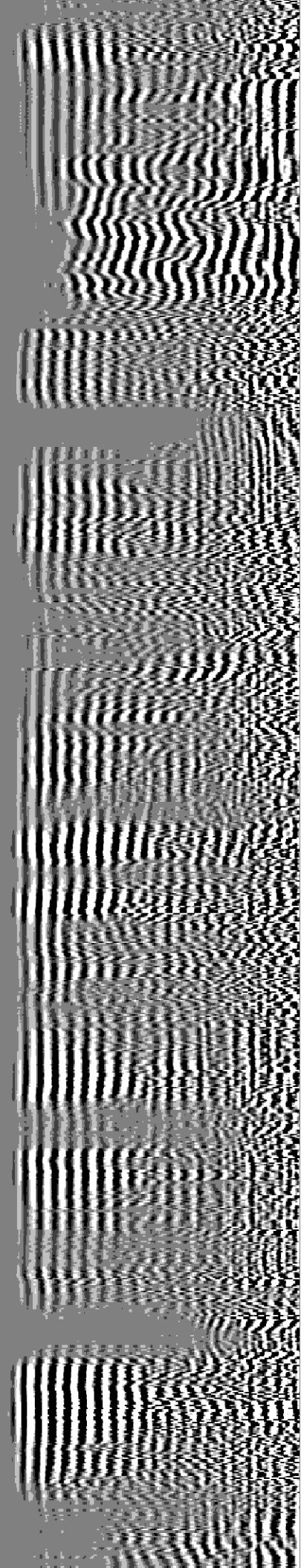
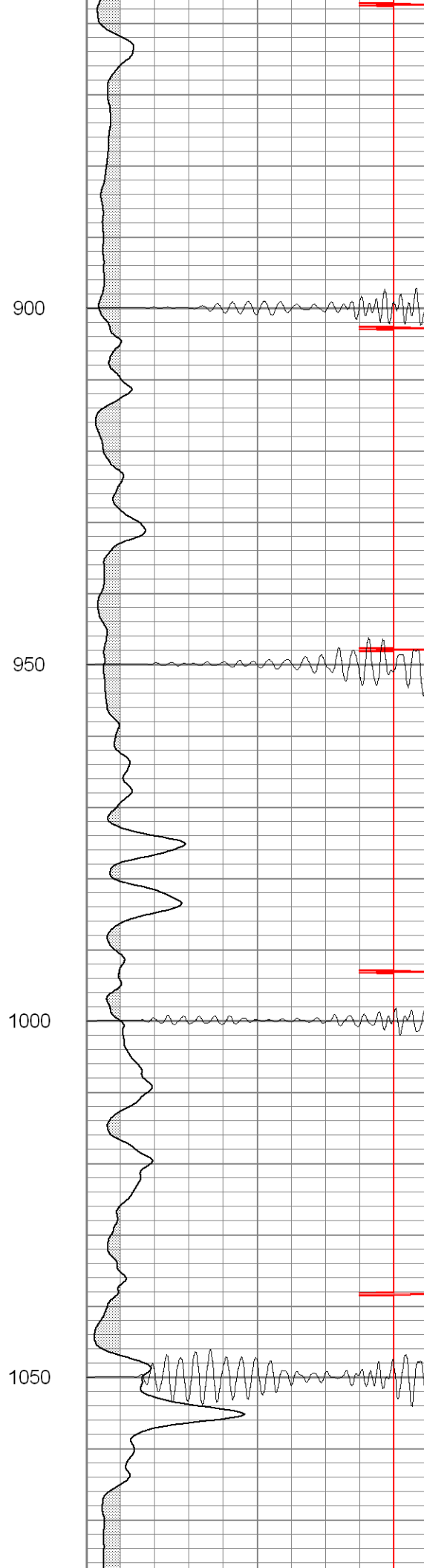
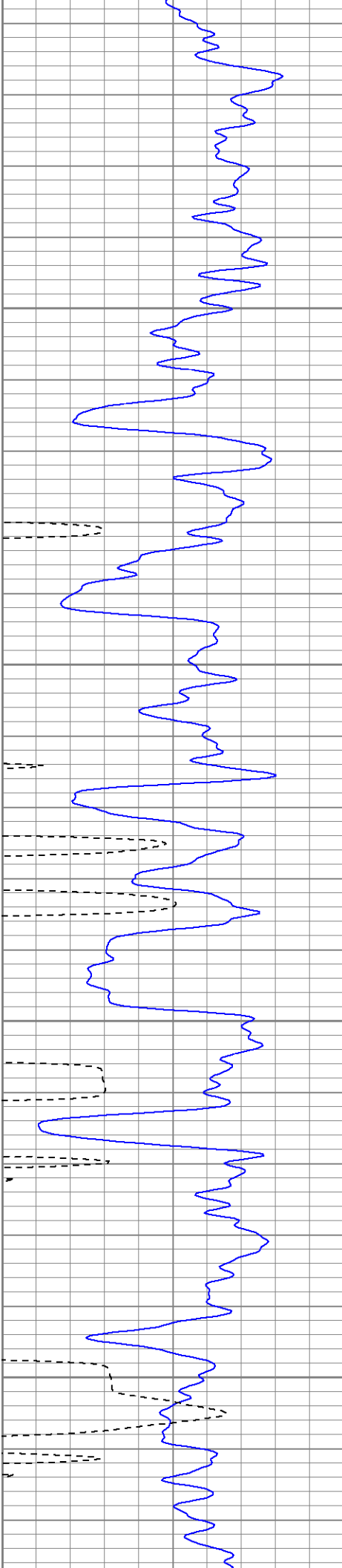


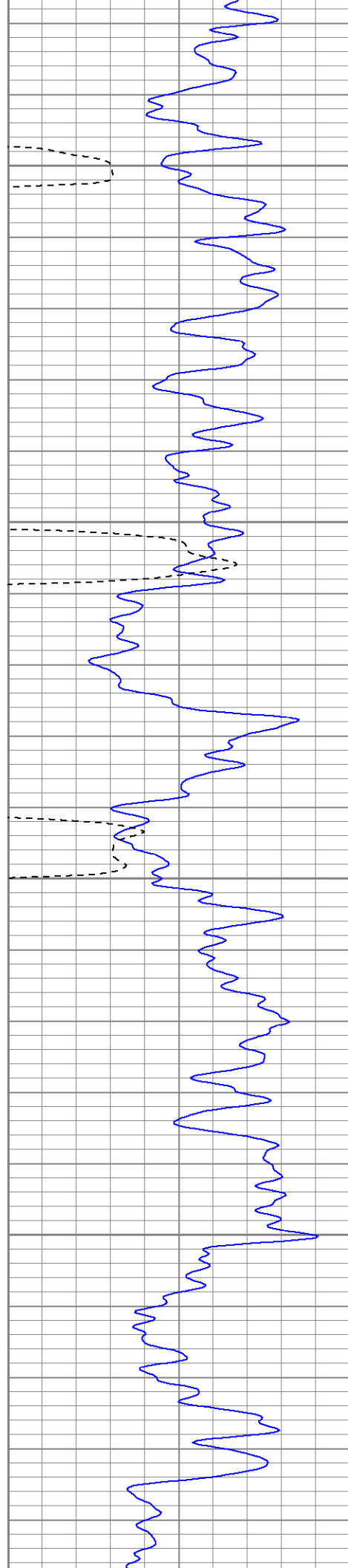










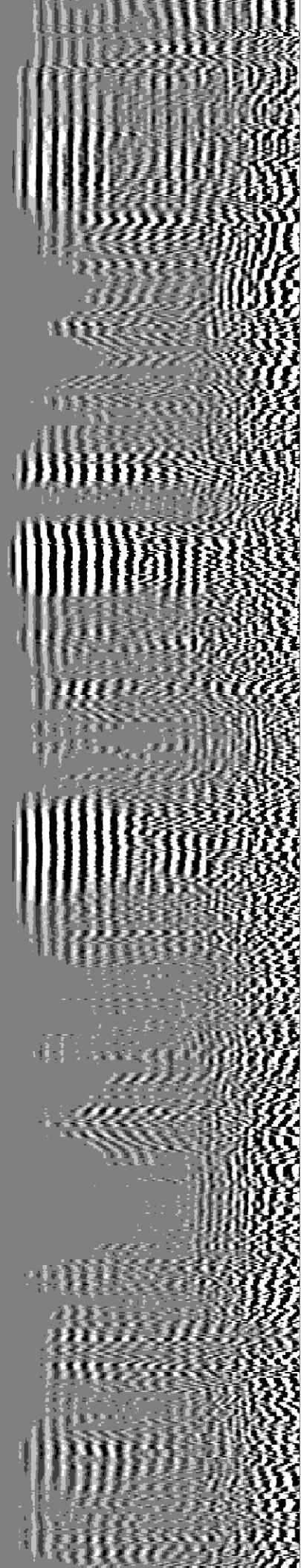
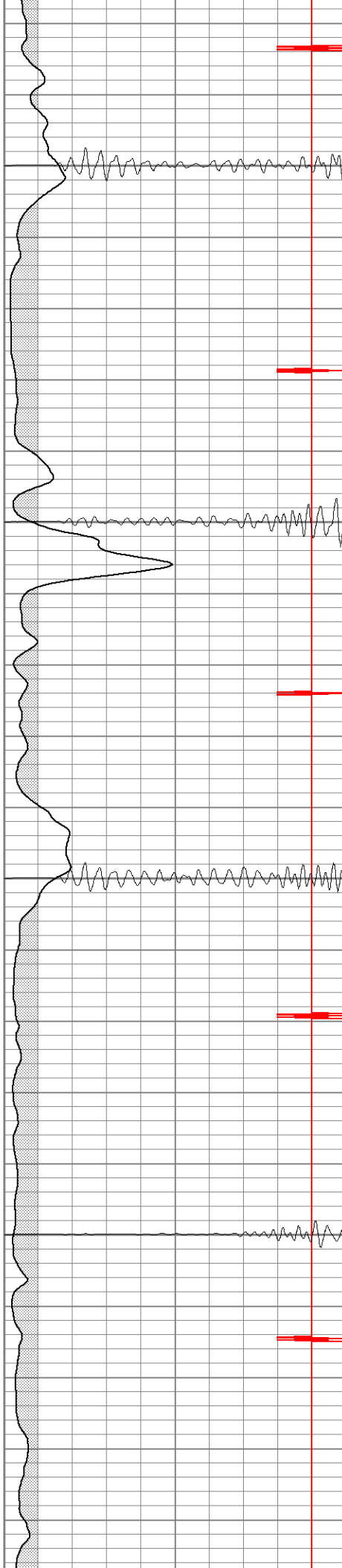


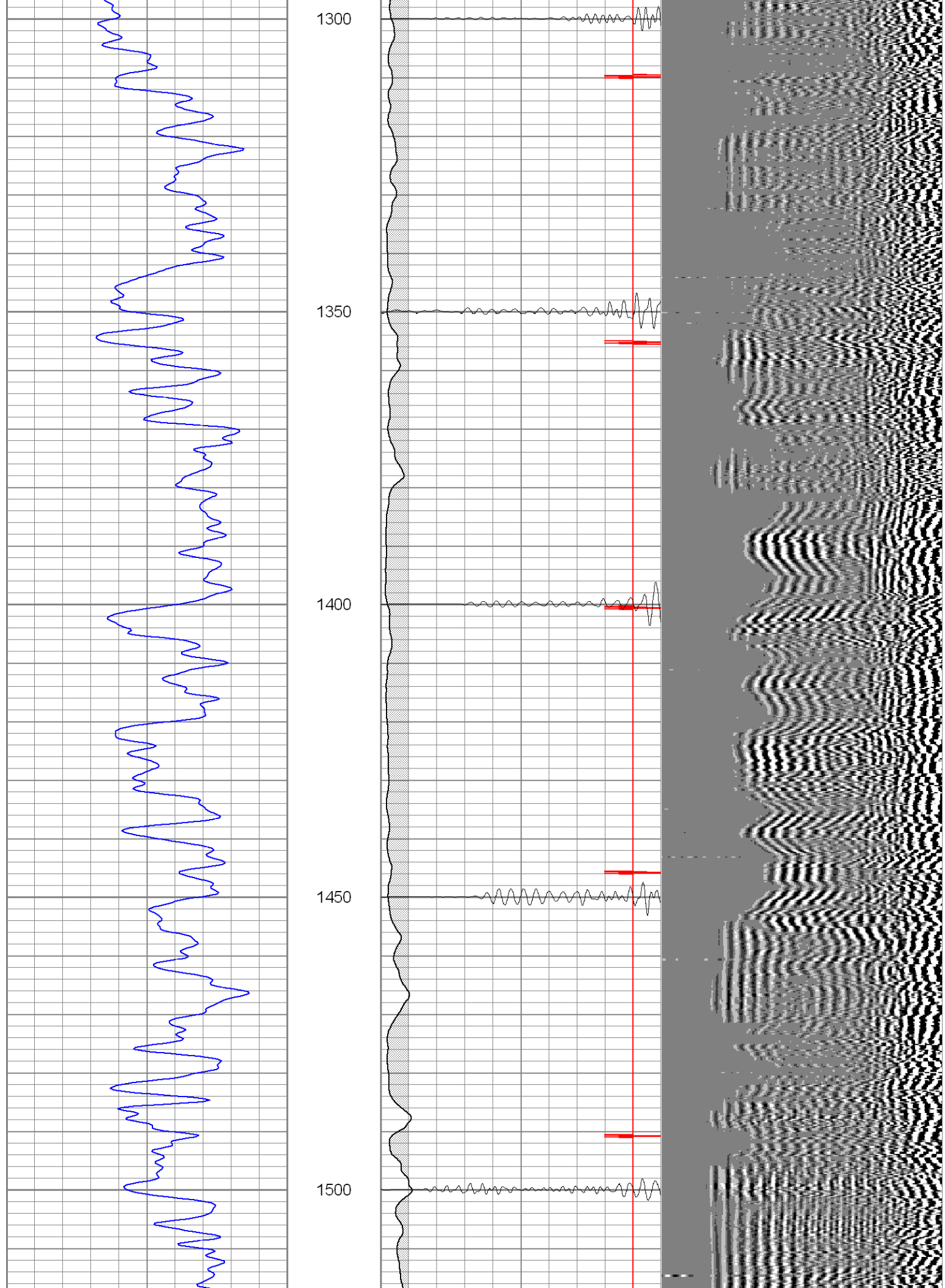
1100

1150

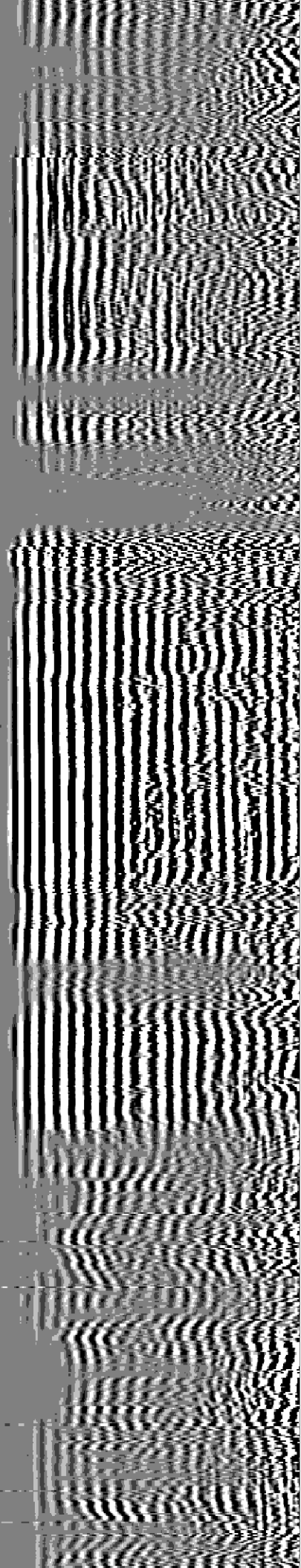
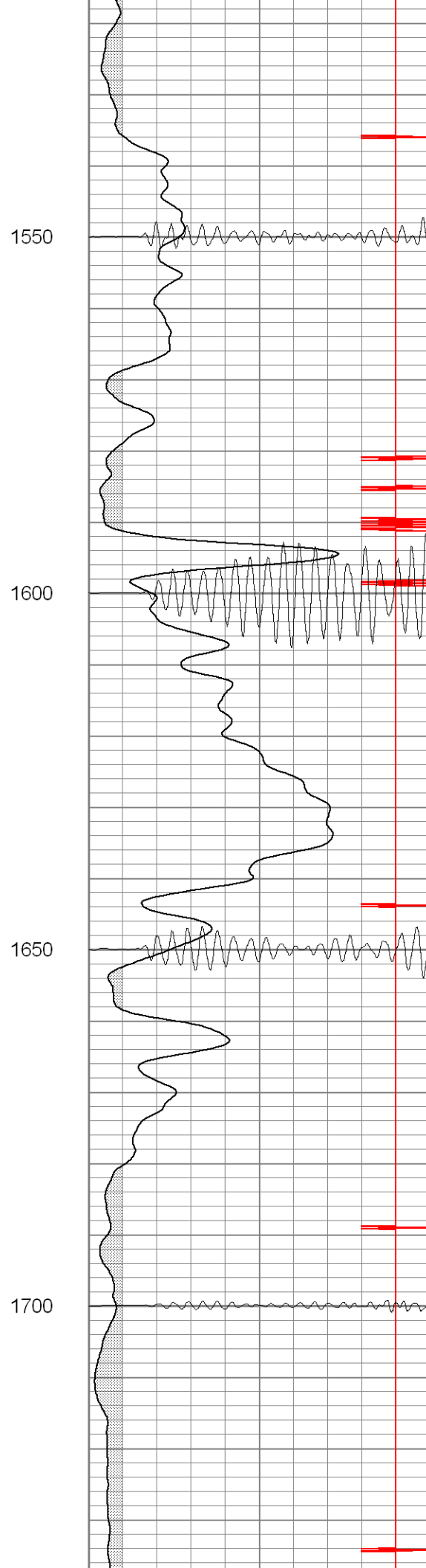
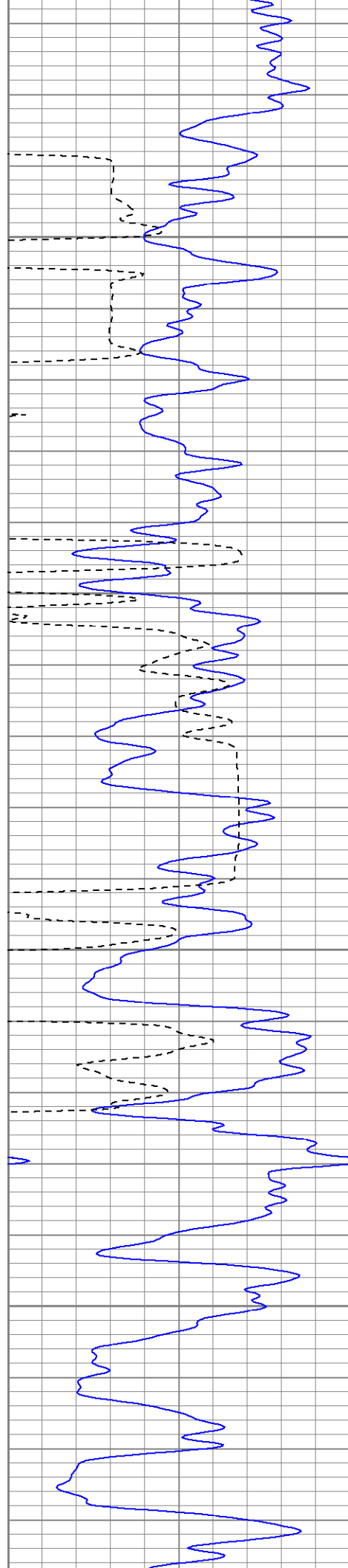
1200

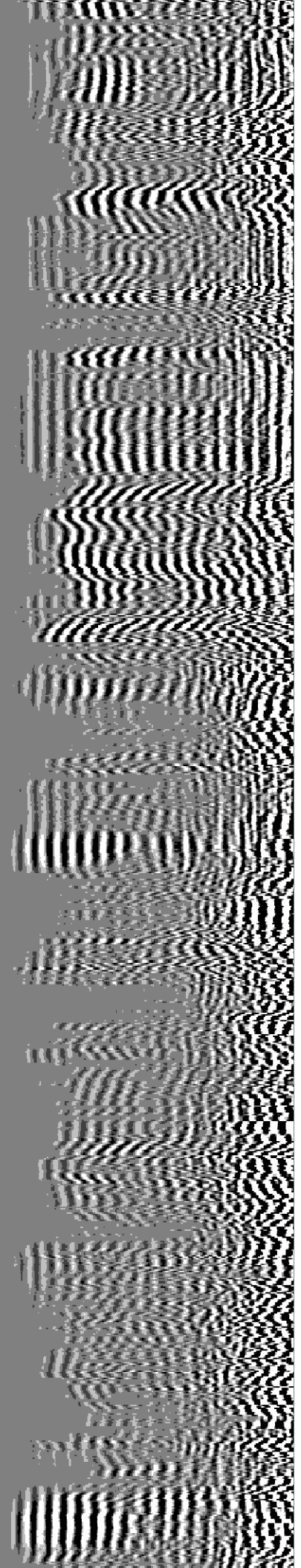
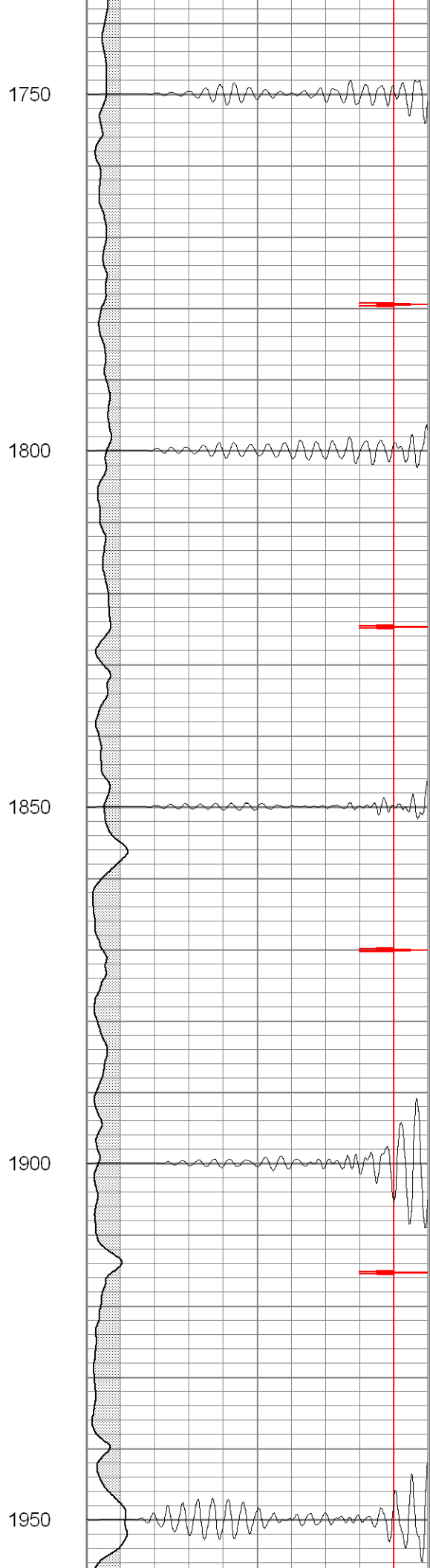
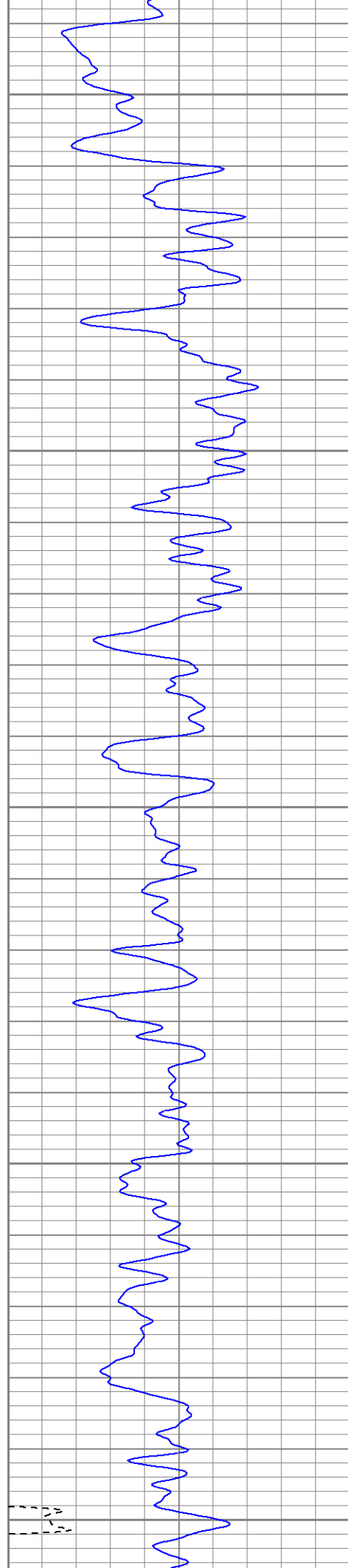
1250

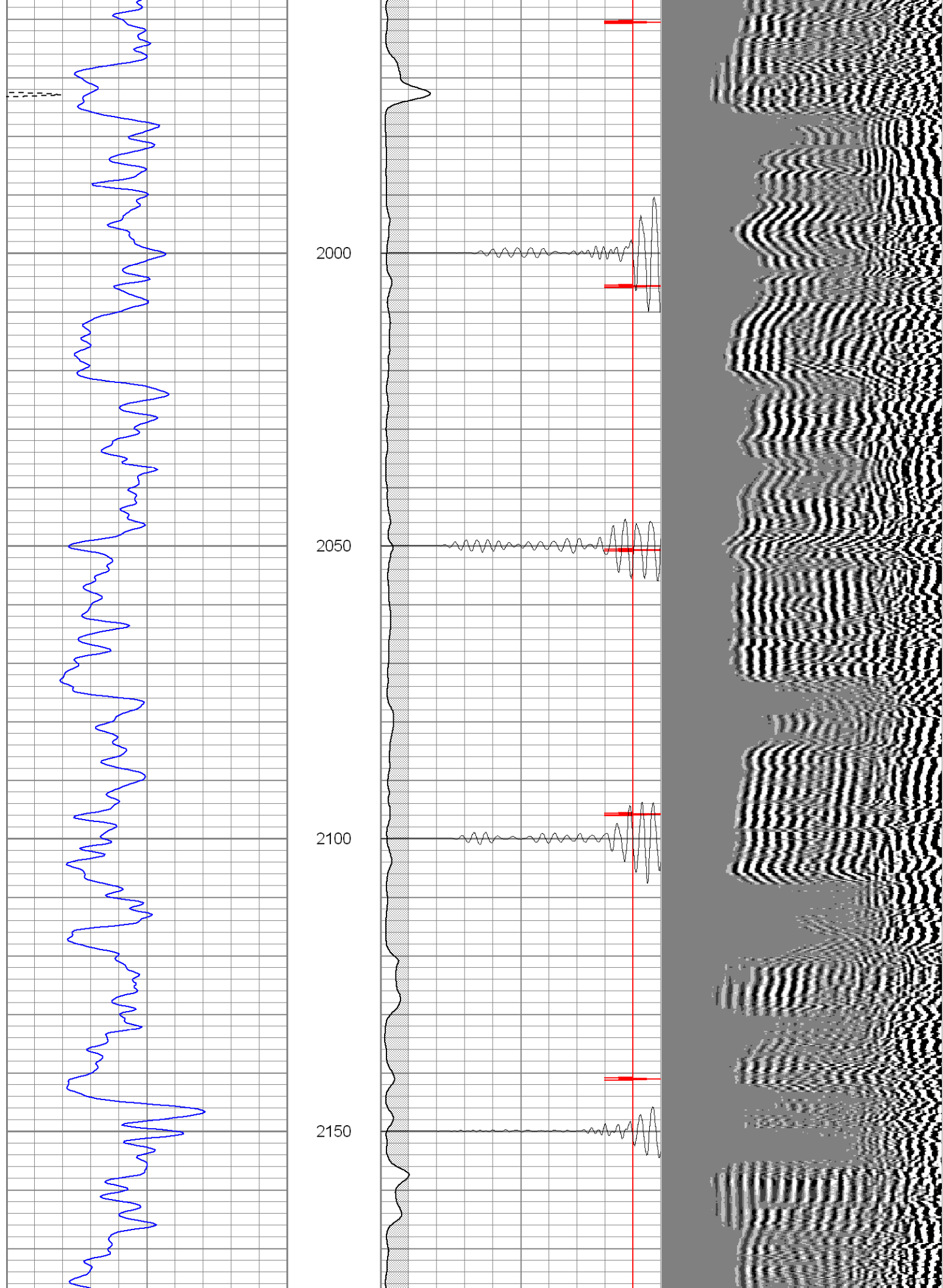


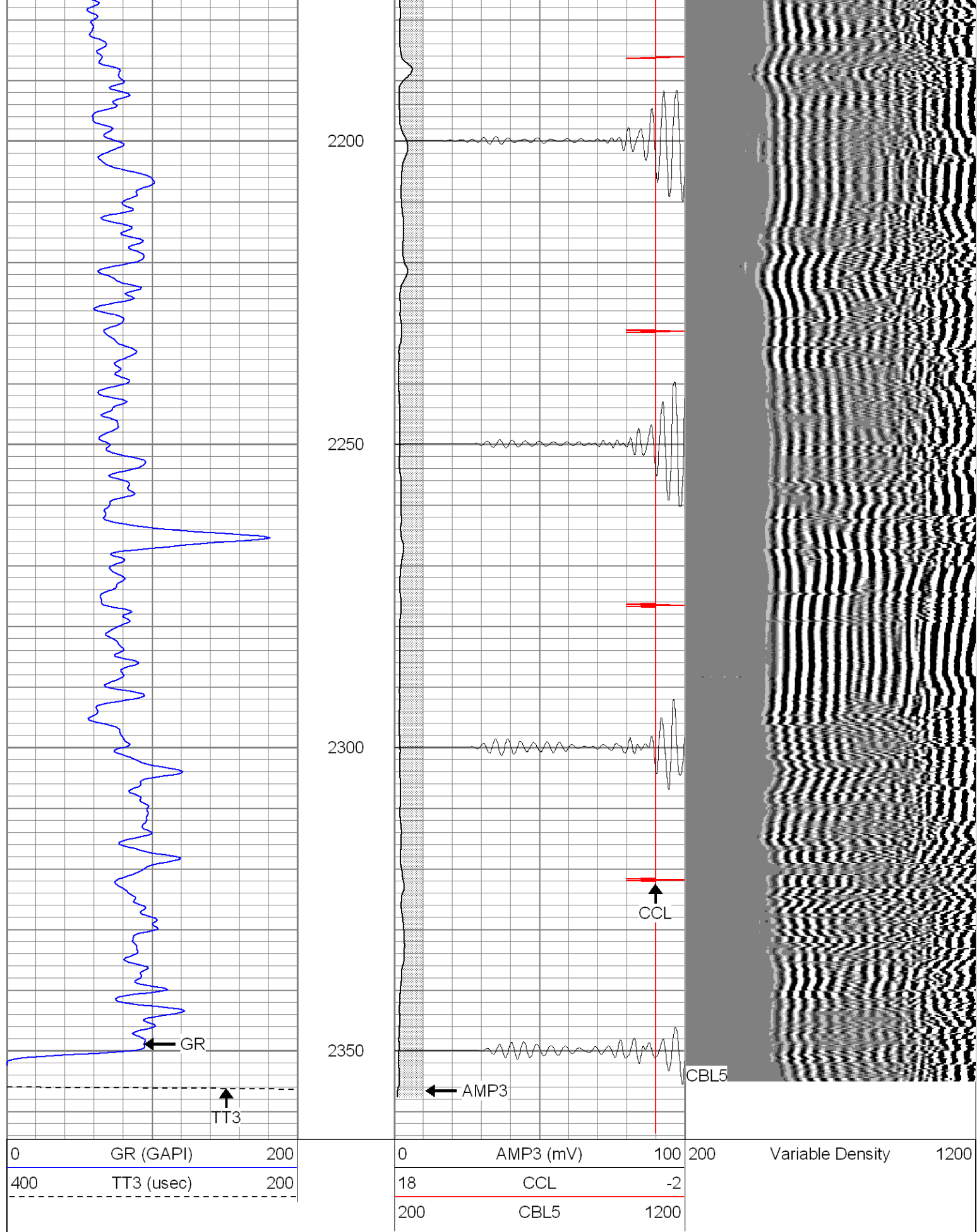












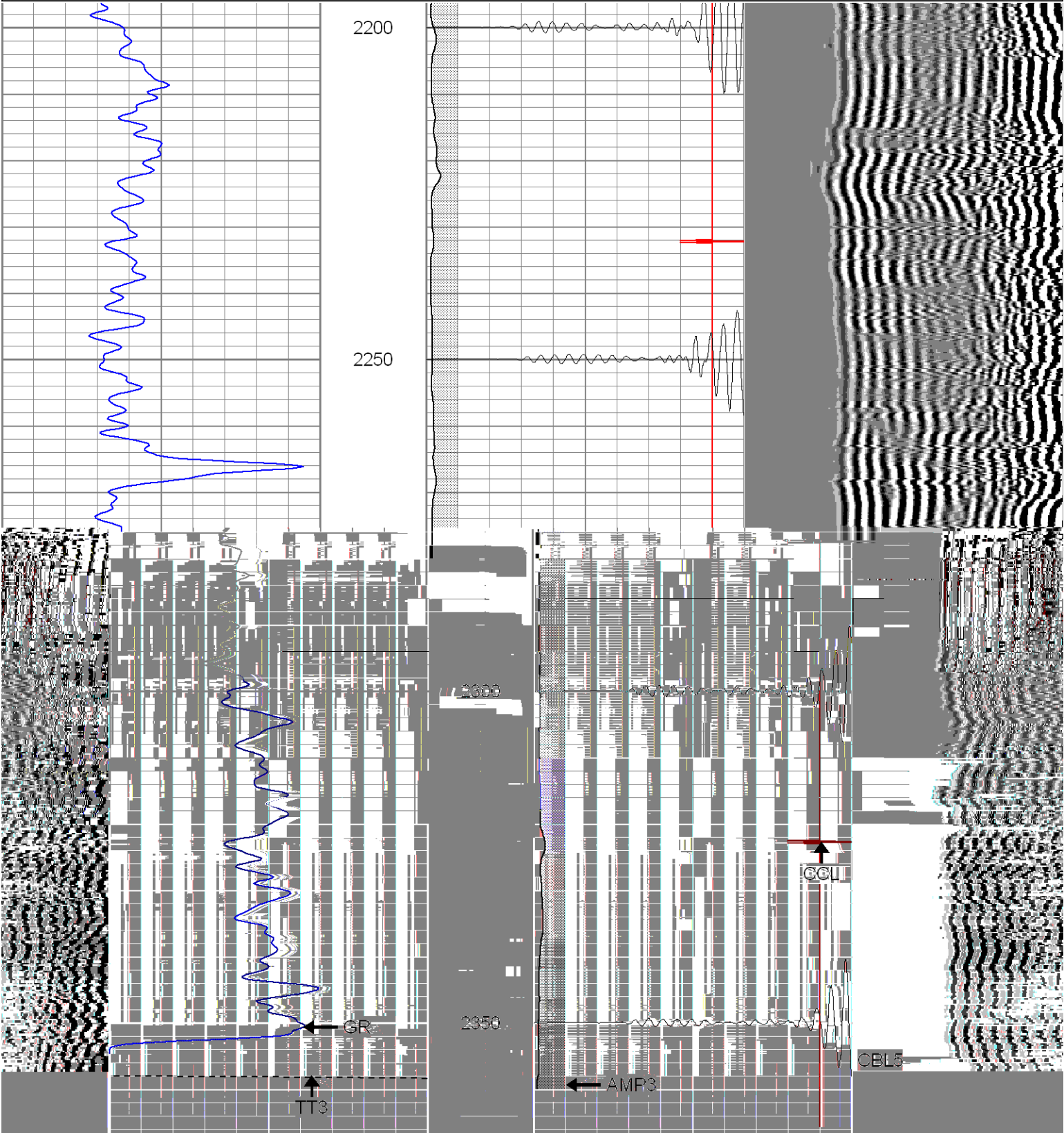


Function

Repeat Section

Database File: ge32-10b3606.db  
Dataset Pathname: pass1  
Presentation Format: cblrt  
Dataset Creation: Mon Mar 06 17:26:06 2006 by Log Warrior 7.0 STD Cas  
Charted by: Depth in Feet scaled 1:240

0	GR (GAPI)	200	0	AMP3 (mV)	100	200	Variable Density	1200
400	TT3 (usec)	200	18	CCL	-2			
			200	CBL5	1200			



ty	1200	0	GR (GAPI)	200	0	AMP3 (mV)	100	200	Variable Densi
----	------	---	-----------	-----	---	-----------	-----	-----	----------------



400	TT3 (usec)	200	18	CCL	-2
			200	CBL5	1200

Cement Bond Log Calibration Report				
Serial Number:	Titan5			
Tool Model:	2			
Performed:	Mon Mar 06 17:21:50 2006			
Depth:	2158.27	ft		
Casing Diameter:	5.5	in		
	3' Spacing		5' Spacing	
Signal Zero:	0		0	mV
Calibrated Amplitude:	85		85	mV
Reading at Signal Zero:	-0.02		0	V
Reading in Free Pipe:	1.5		1.5	V
Gain:	55.9211		56.6667	
Offset:	1.11842		0	
Gamma Ray Calibration Report				
Serial Number:	Titan5			
Tool Model:	T2			
Performed:	Mon Jan 30 08:59:20 2006			
Calibrator Value:	1.0	GAPI		
Background Reading:	0.0	cps		
Calibrator Reading:	1.0	cps		
Sensitivity:	1.2000	GAPI/cps		