

Cement Bond Log

Depth correlated to PSI logged May 7th, 2007
Top of Cement at: 3820
Logged under 1000 PSI

The Well Name, Location, Borehole Description, and / or Cementing Data Furnished by Client

EQUIPMENT DATA

Run No.	One	Run No.		Run No.		Run No.	
Serial No.		Serial No.		Serial No.		Serial No.	
Model No.	Probe CBL	Model No.		Model No.		Model No.	
Diameter	2 3/4	Diameter		Diameter		Diameter	

LOGGING DATA

General Data

Pass	Depths		Well Head	Speed	Logging Run Comments		
No.	From	To	Pressure	Ft/Min			

Pass	Scale		Scale		Scale		Scale	
No.	L	R	L	R	L	R	L	L

DIRECTIONAL INFORMATION

Maximum Deviation		deg. @		KOP		

HALLIBURTON

Main Pass

5" = 100'

Database File: mr_vetting_1.db

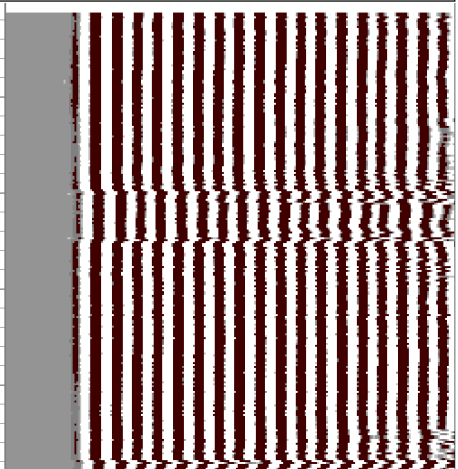
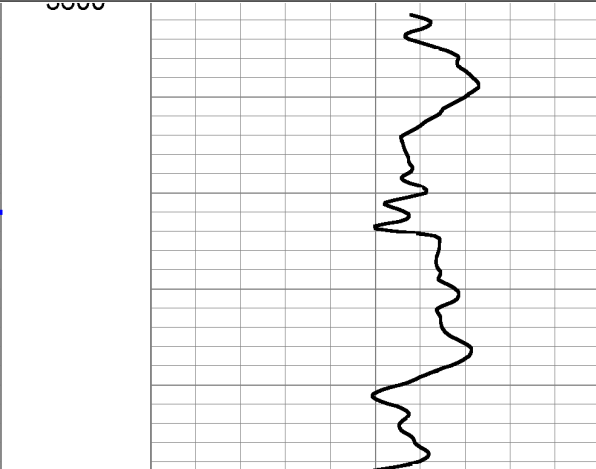

Dataset Pathname: x

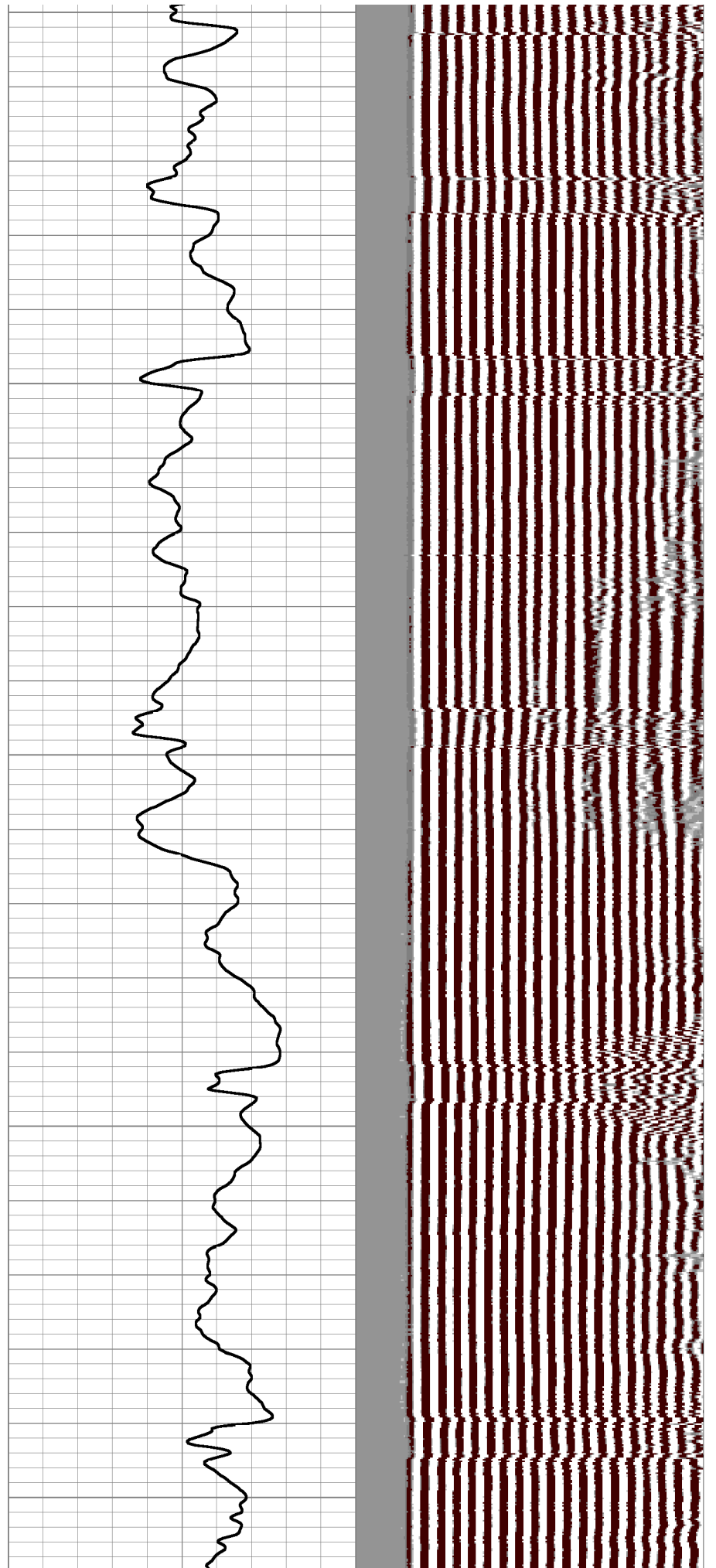
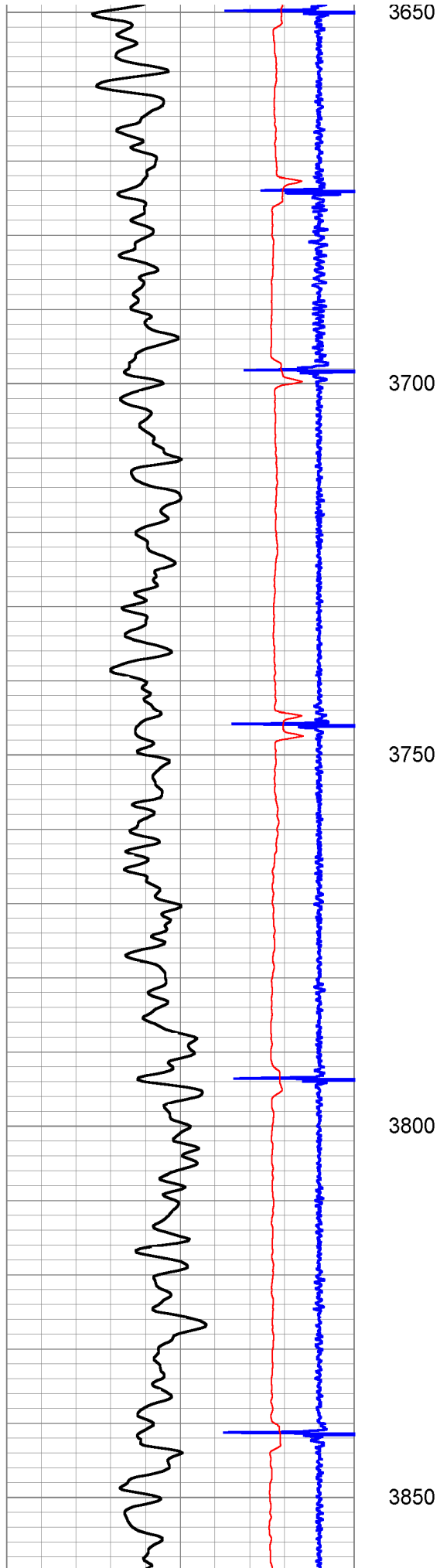
Presentation Format: cbldig

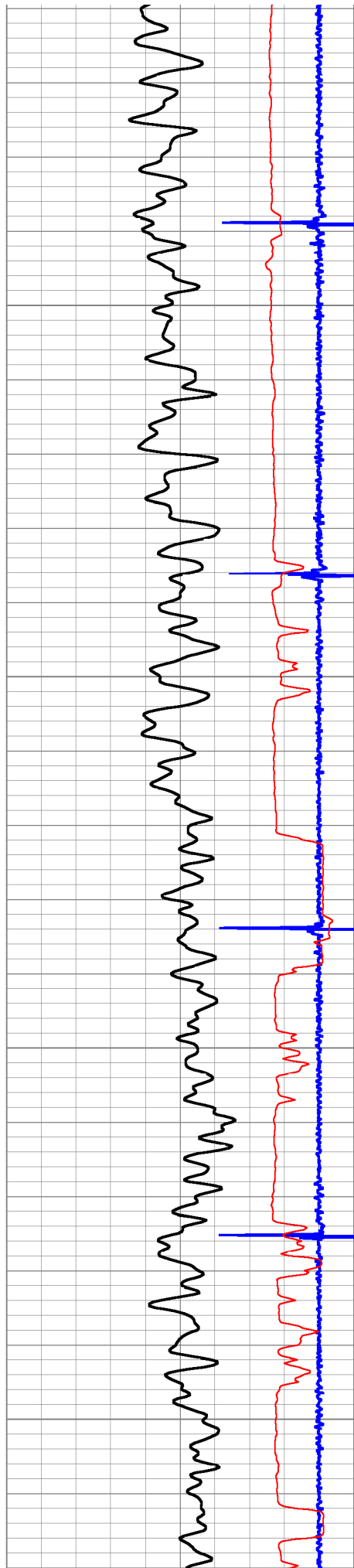
Dataset Creation: Fri Jun 08 14:04:32 2007

Charted by: Depth in Feet scaled 1:240

9	Collar Locator	-1	0	Amplitude (mV)	100	200	Variable Density	1200
0	GR (GAPI)	150	0	Amplified Amplitude (mV)	10			
0	TT3FT (usec)	300						





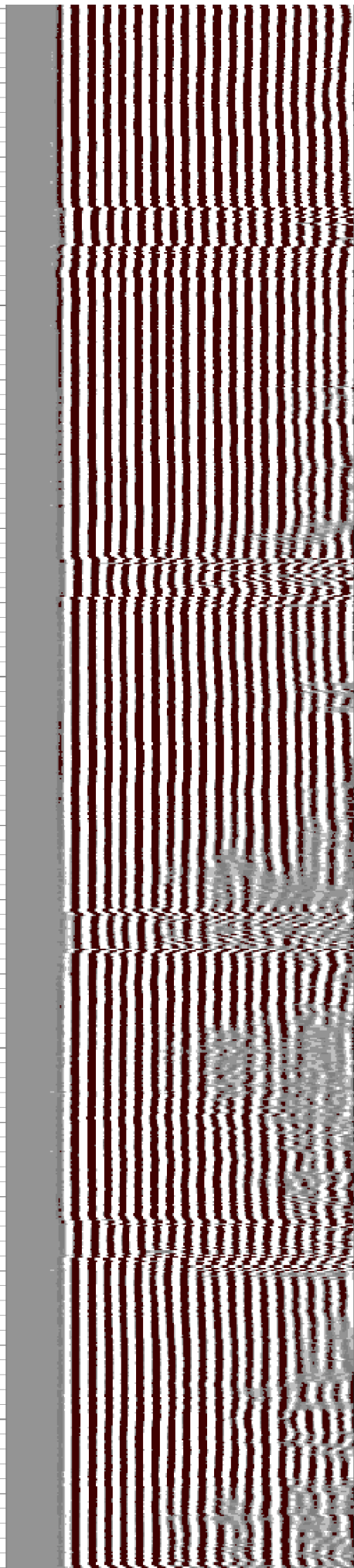
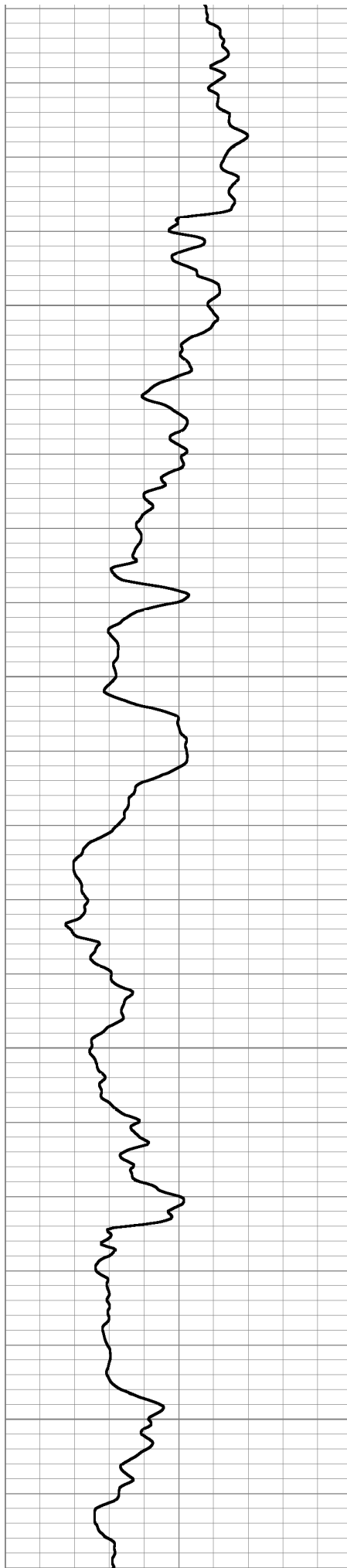


3900

3950

4000

4050



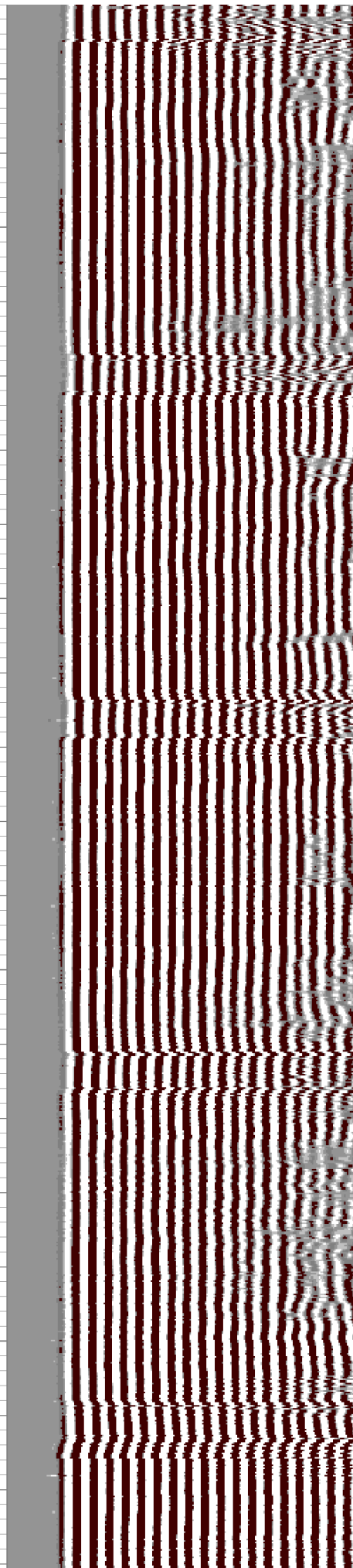
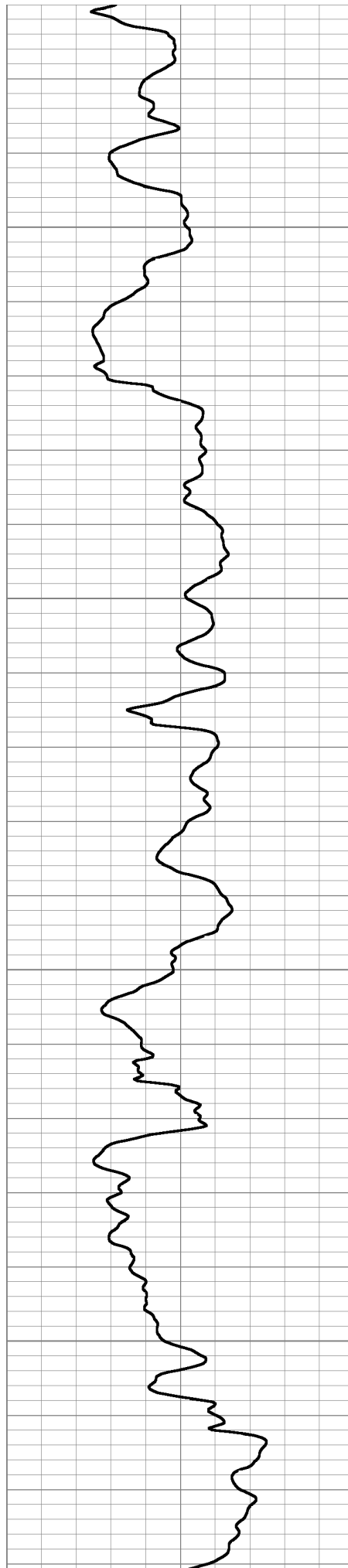


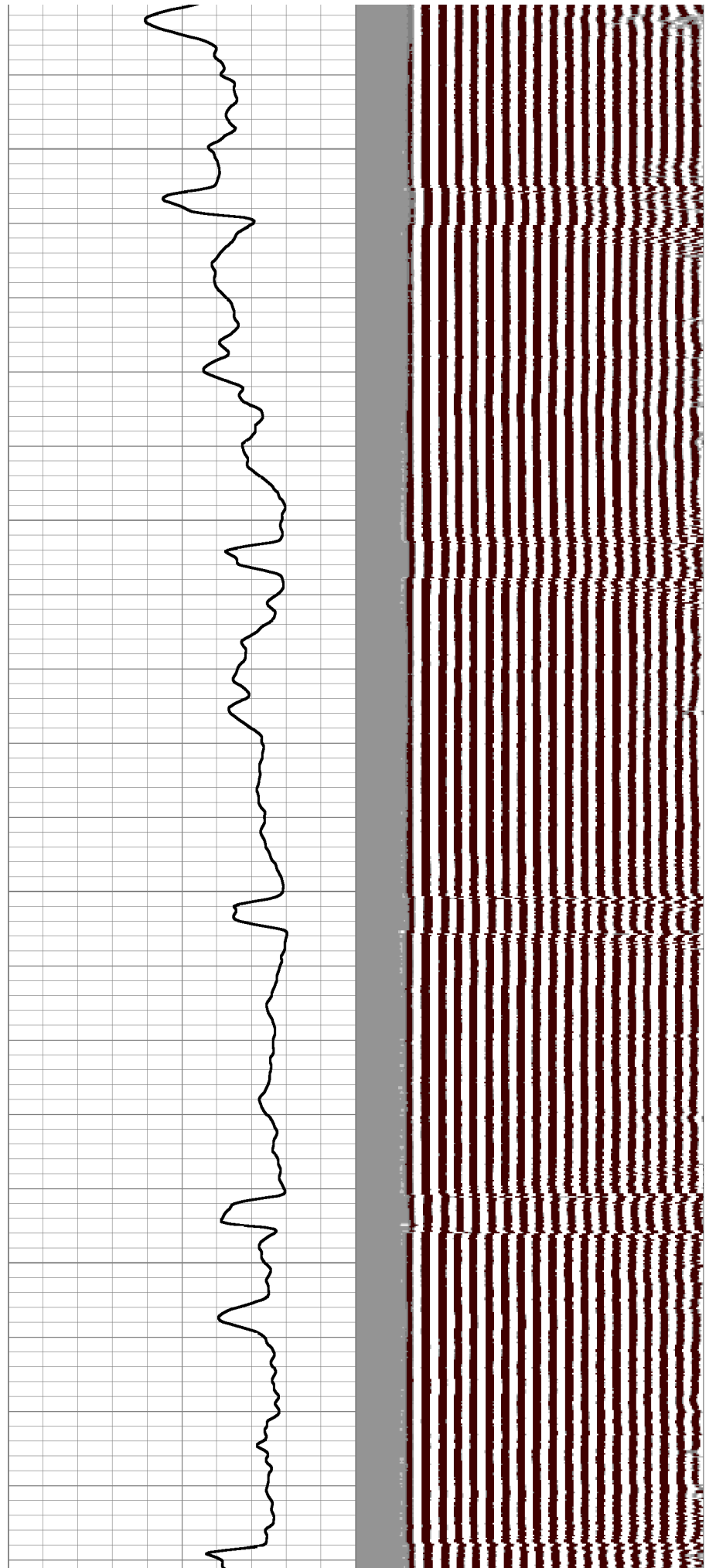
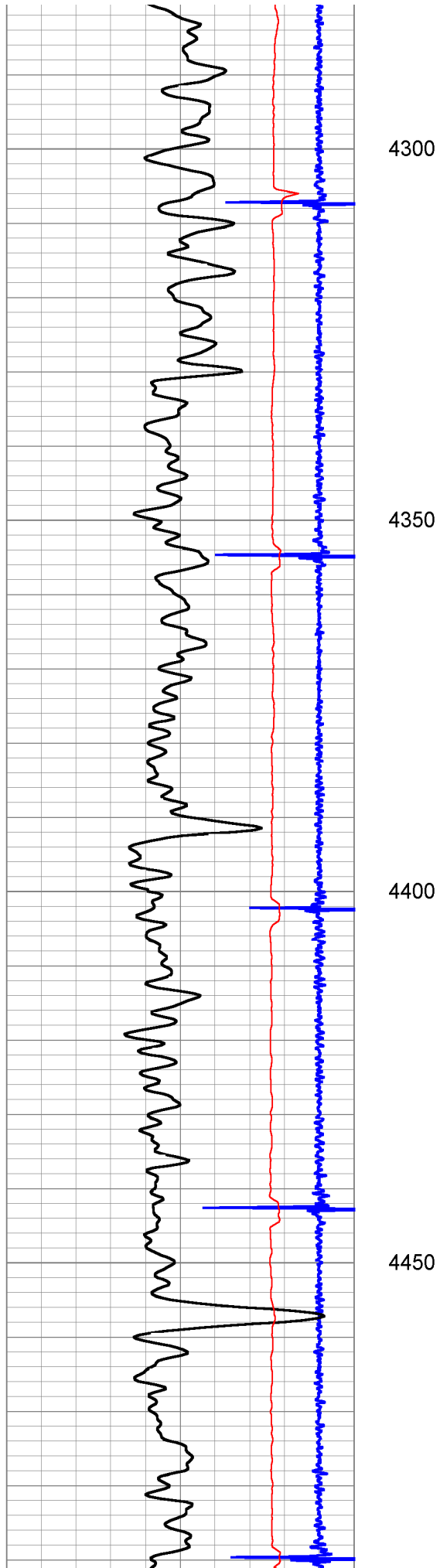
4100

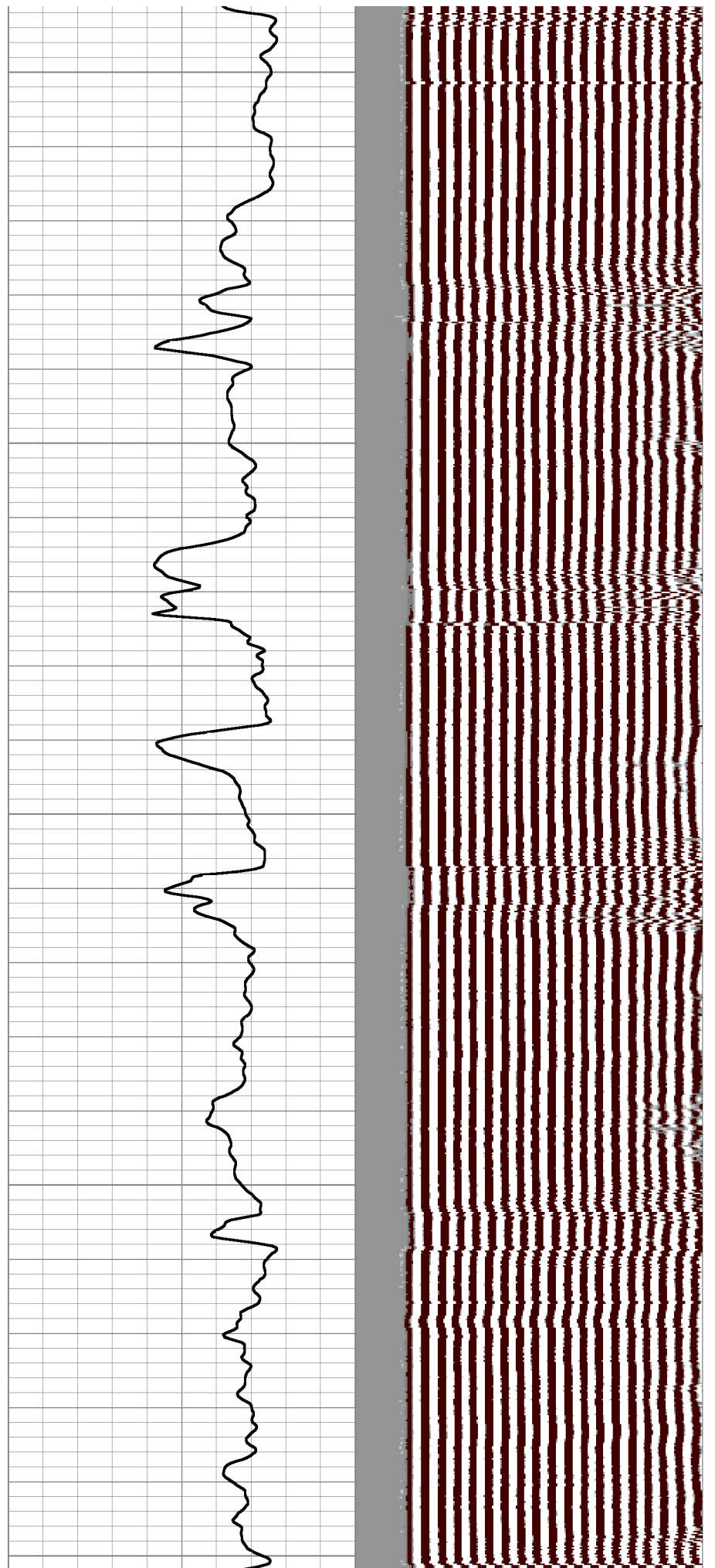
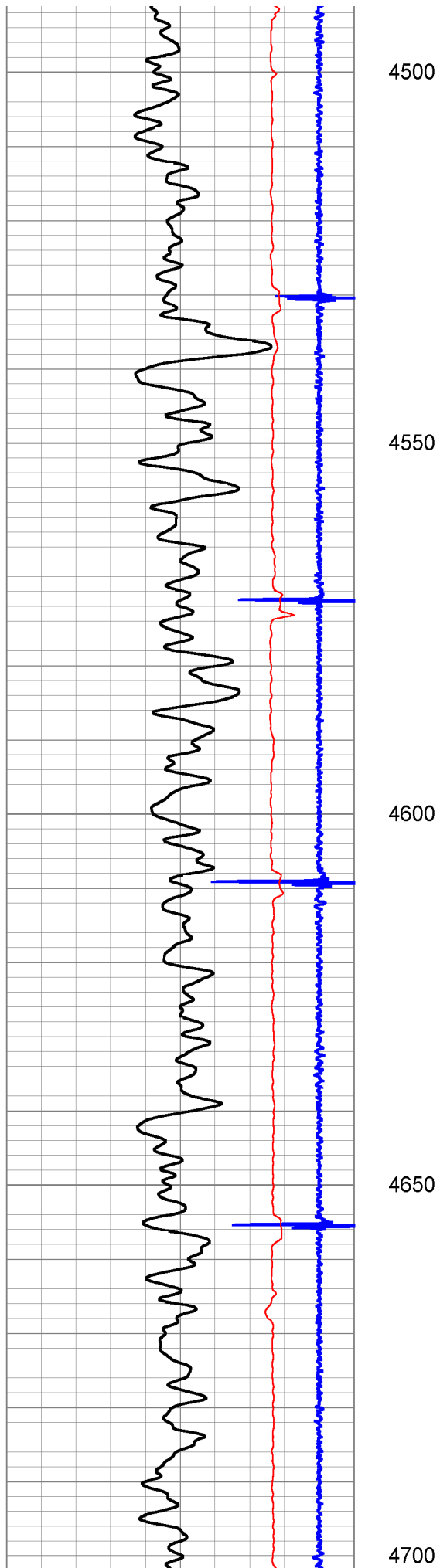
4150

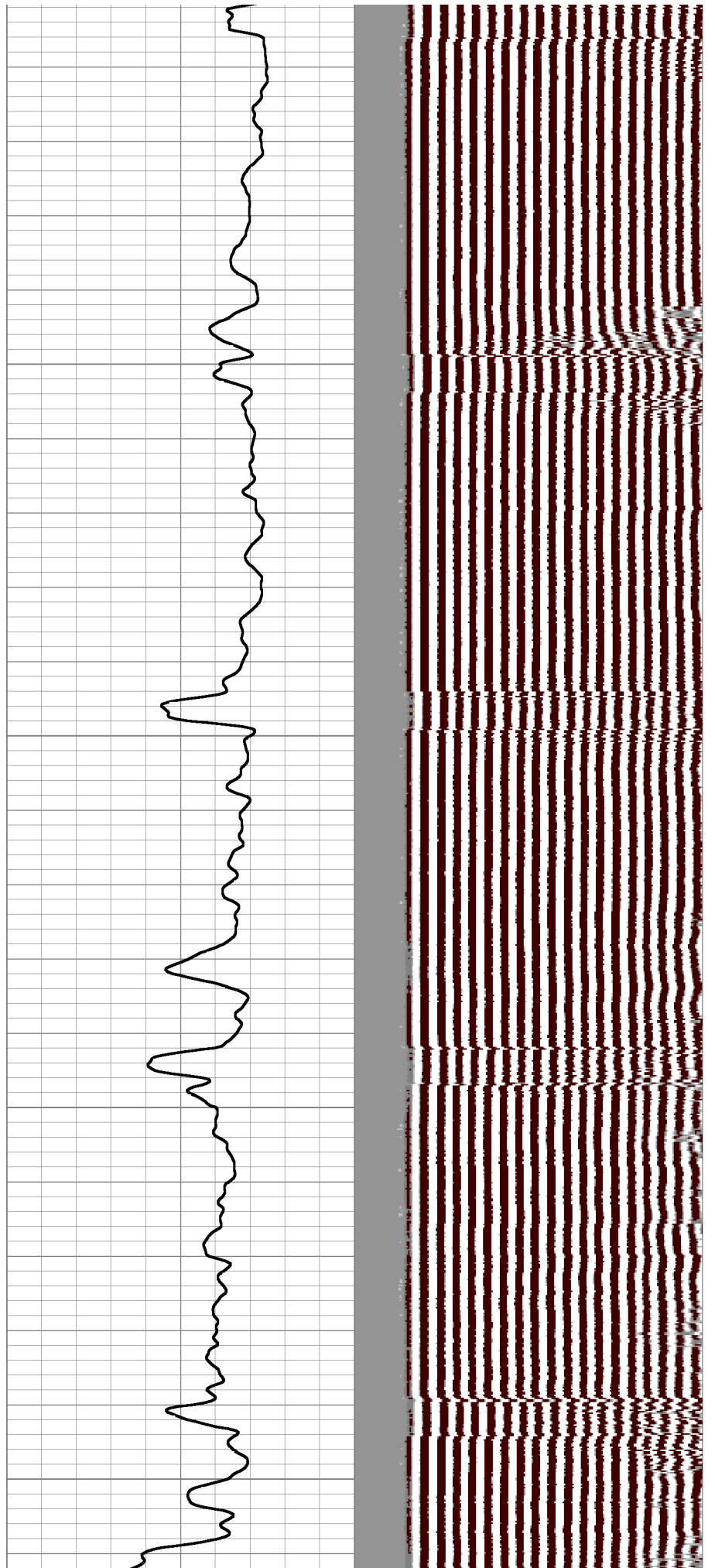
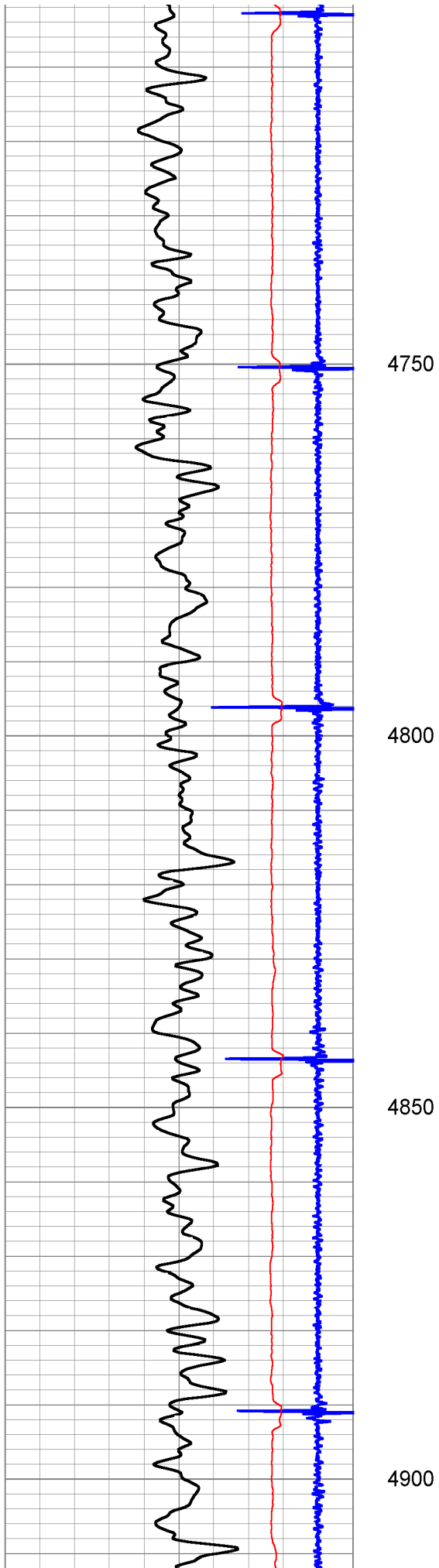
4200

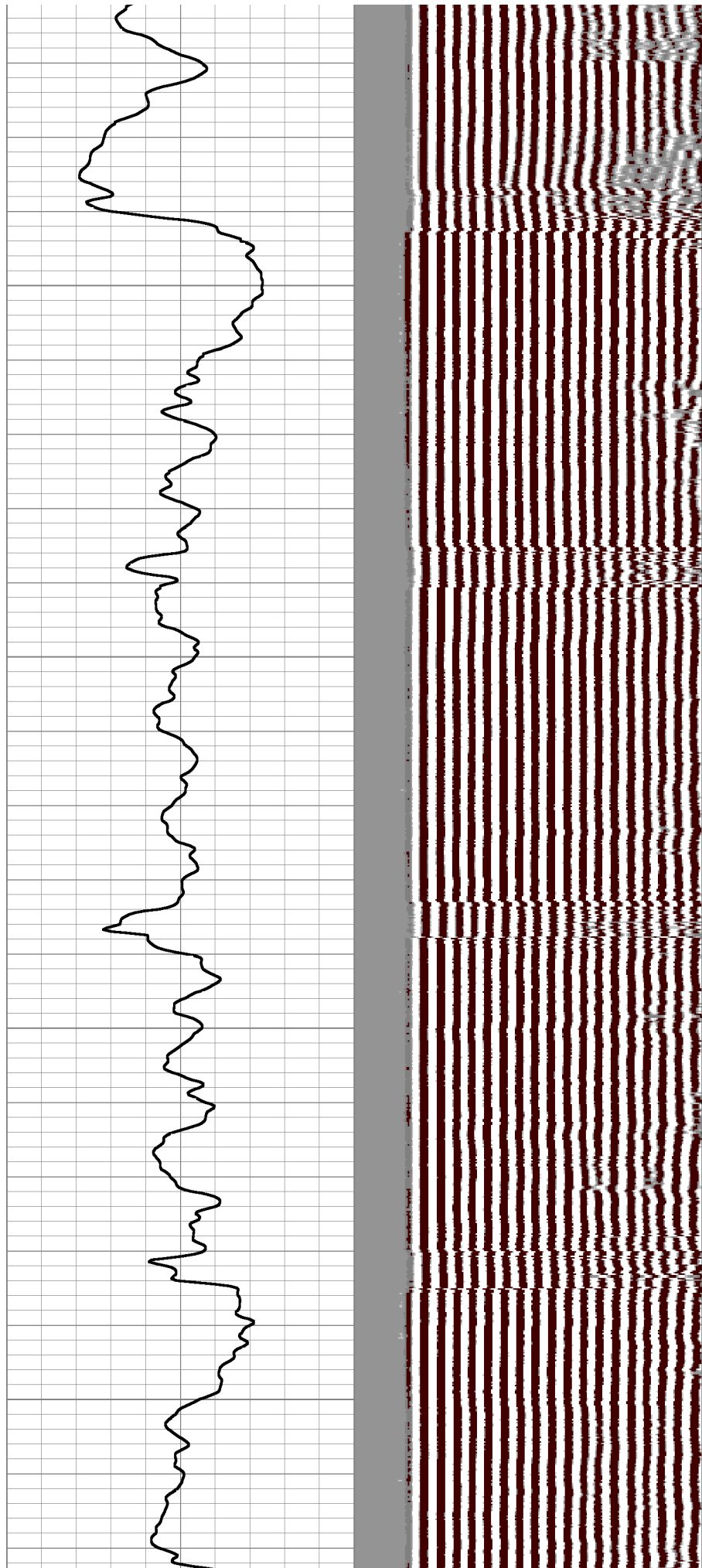
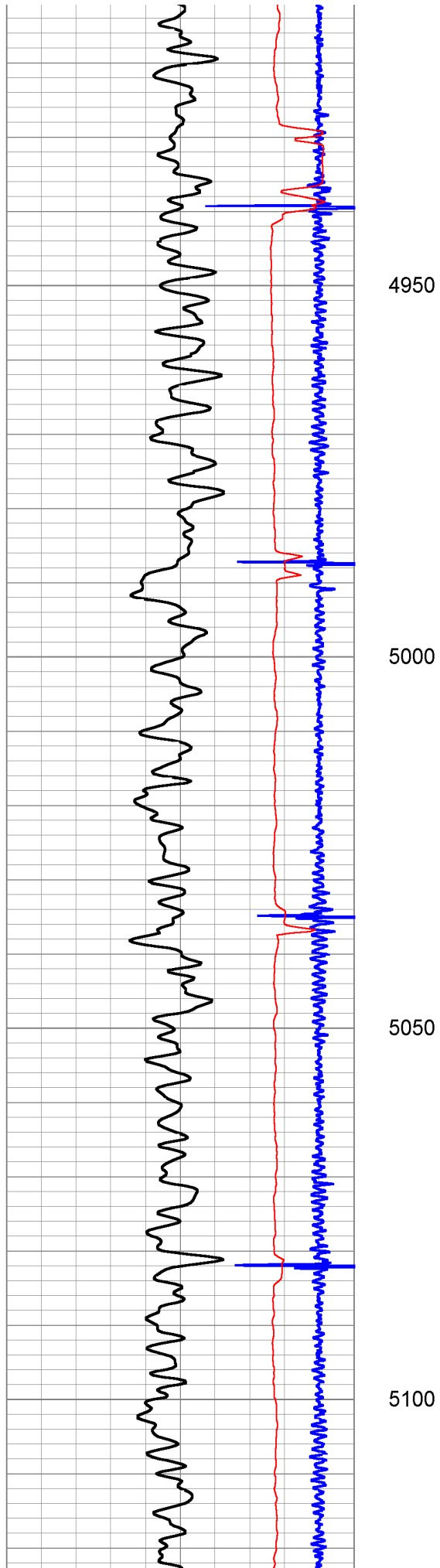
4250

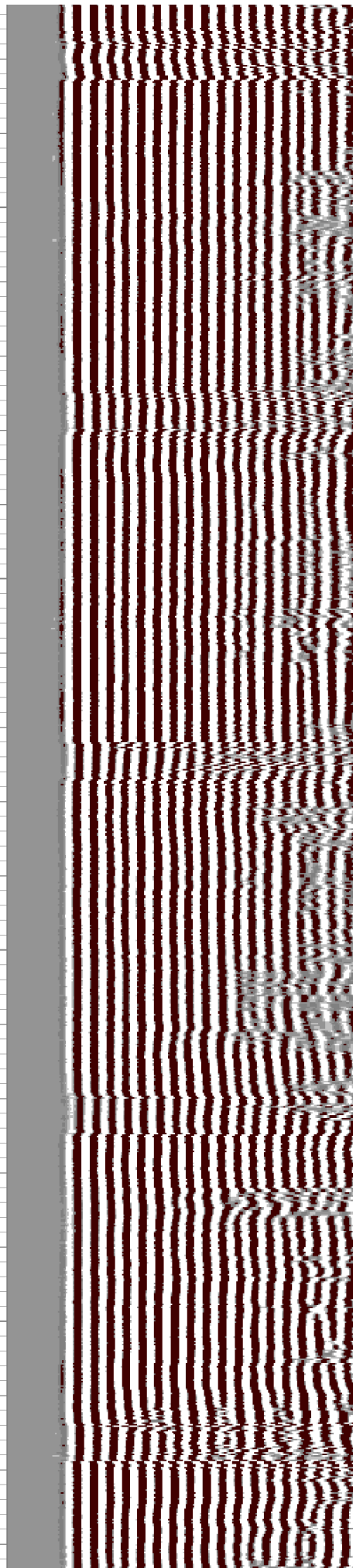
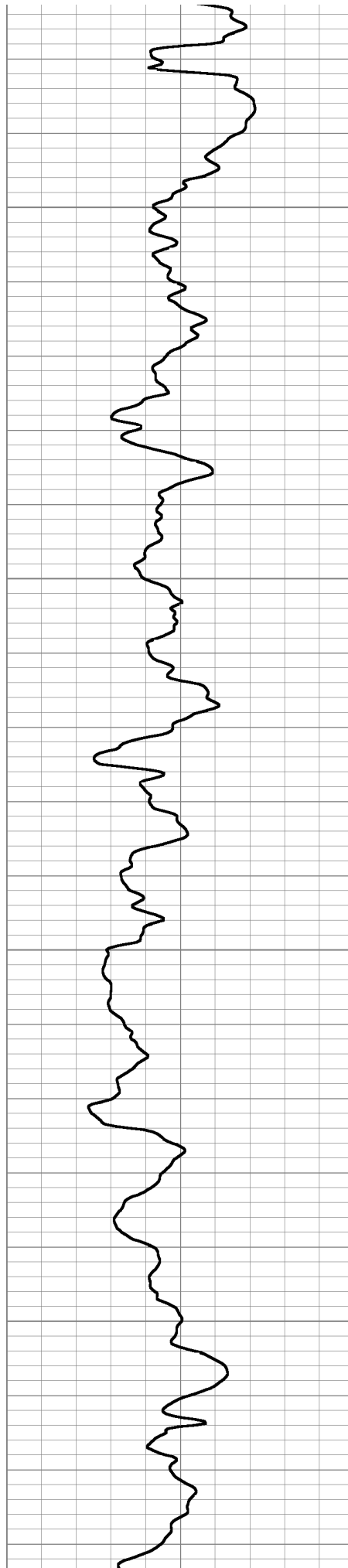
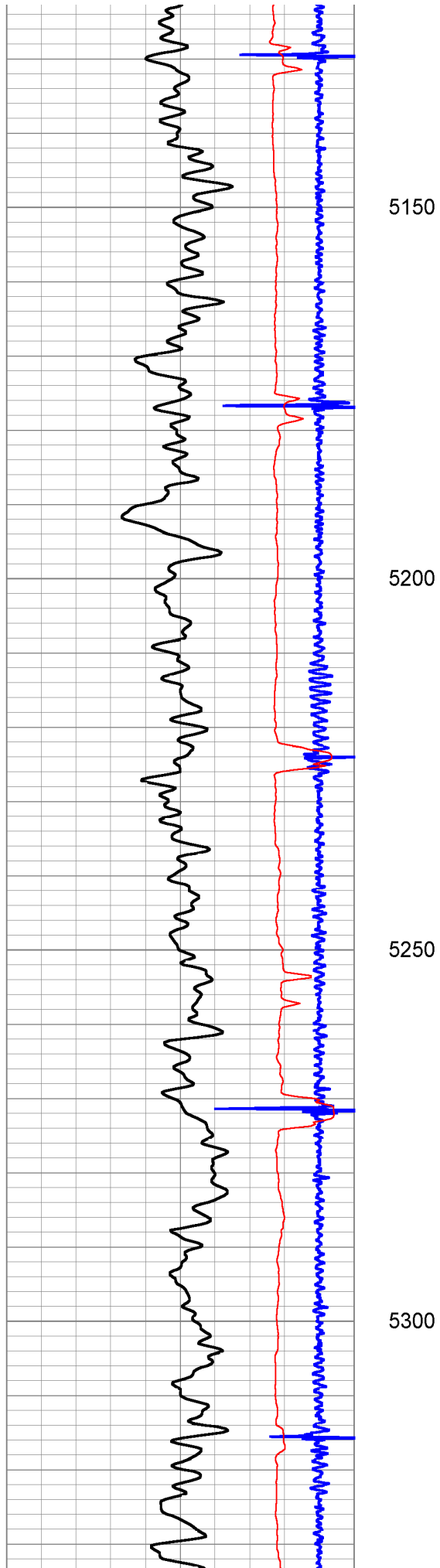


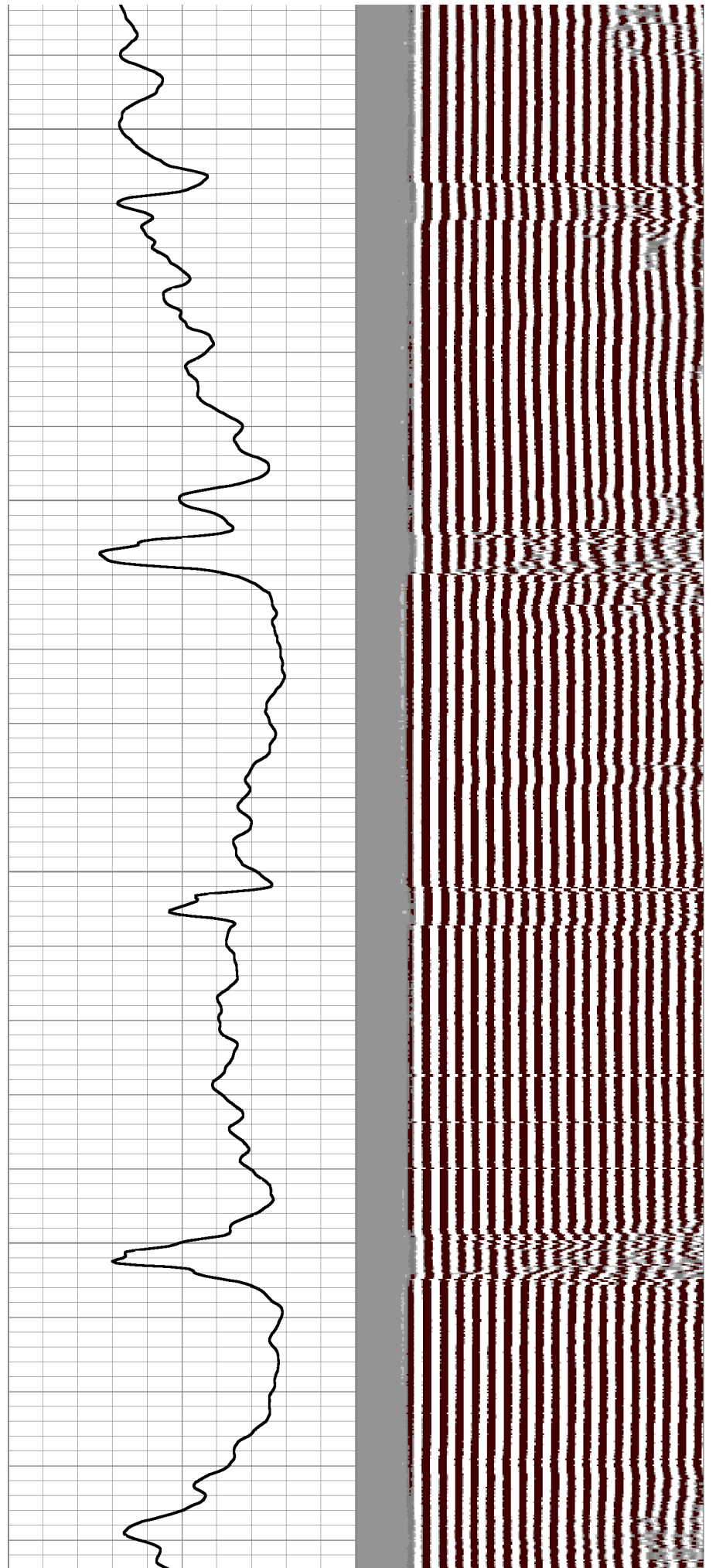
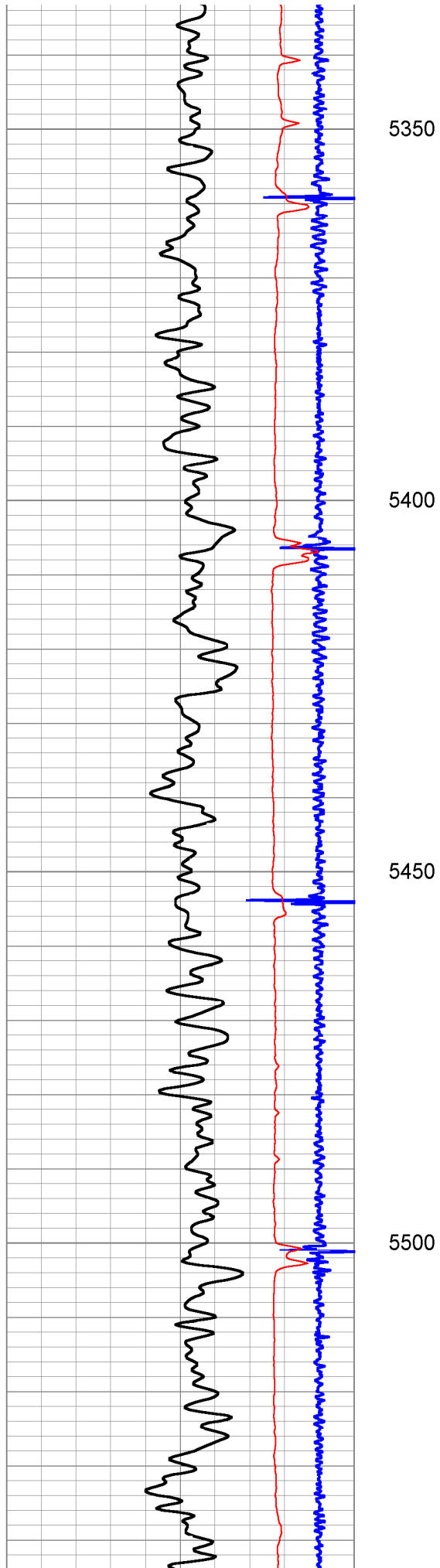


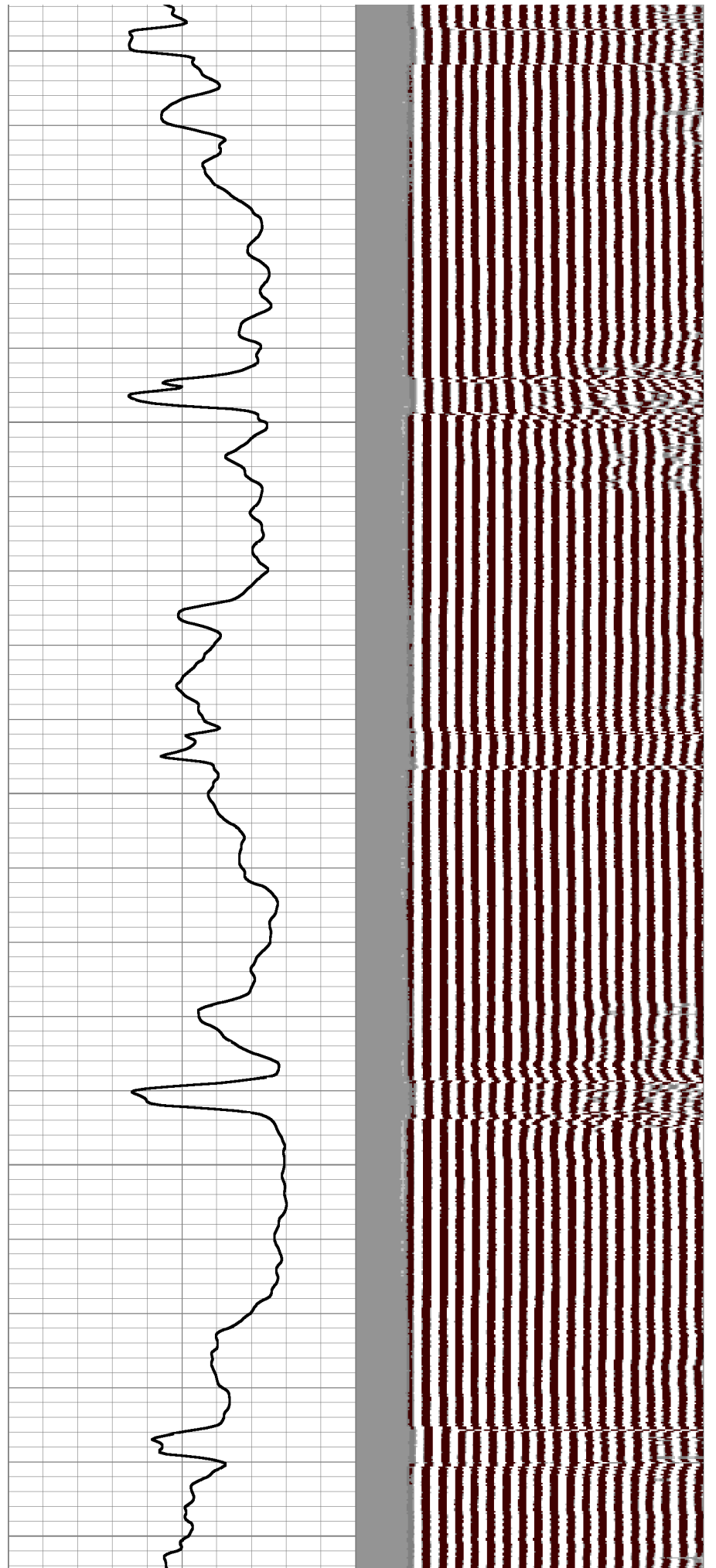
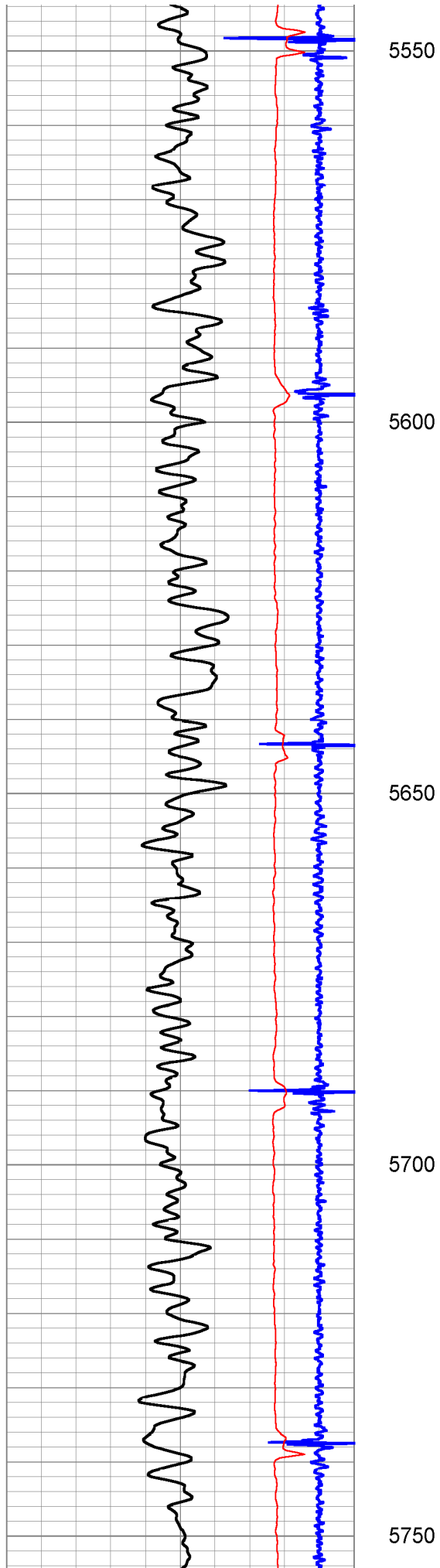


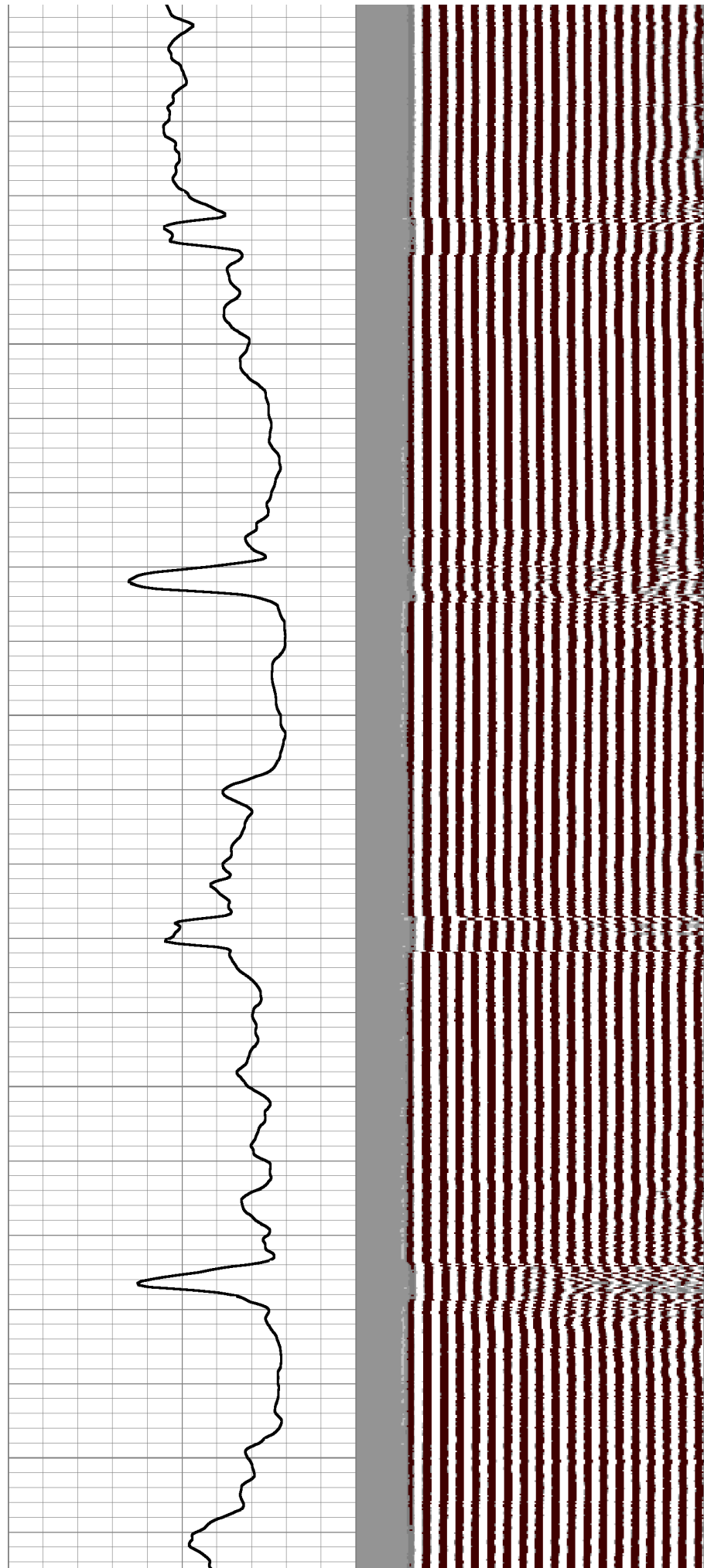
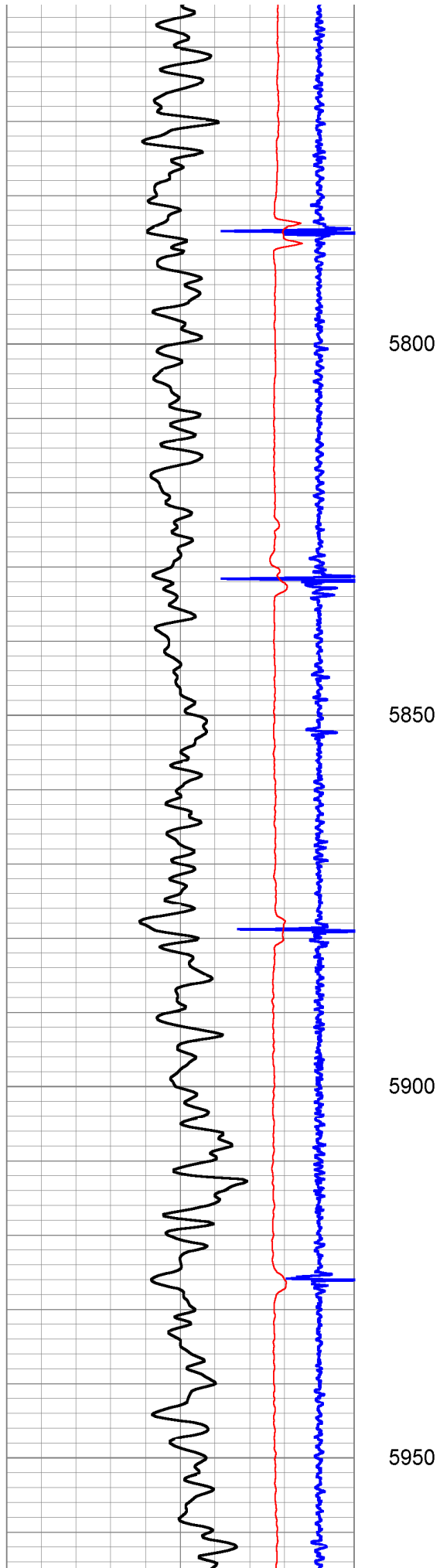


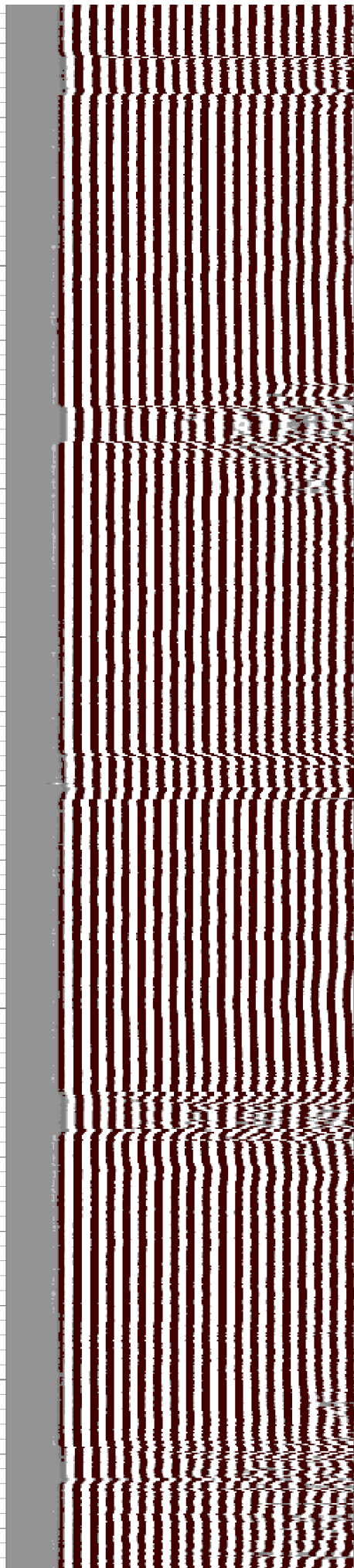
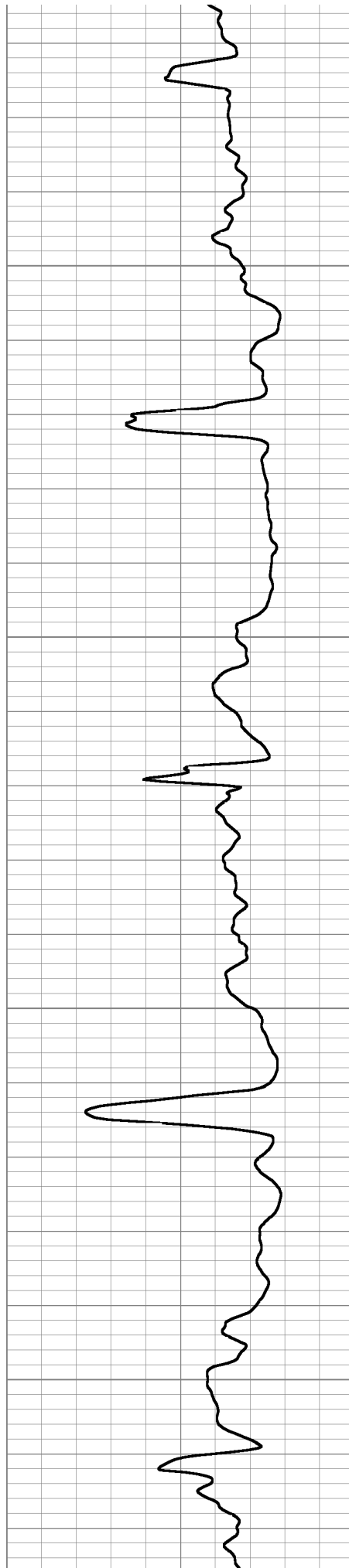
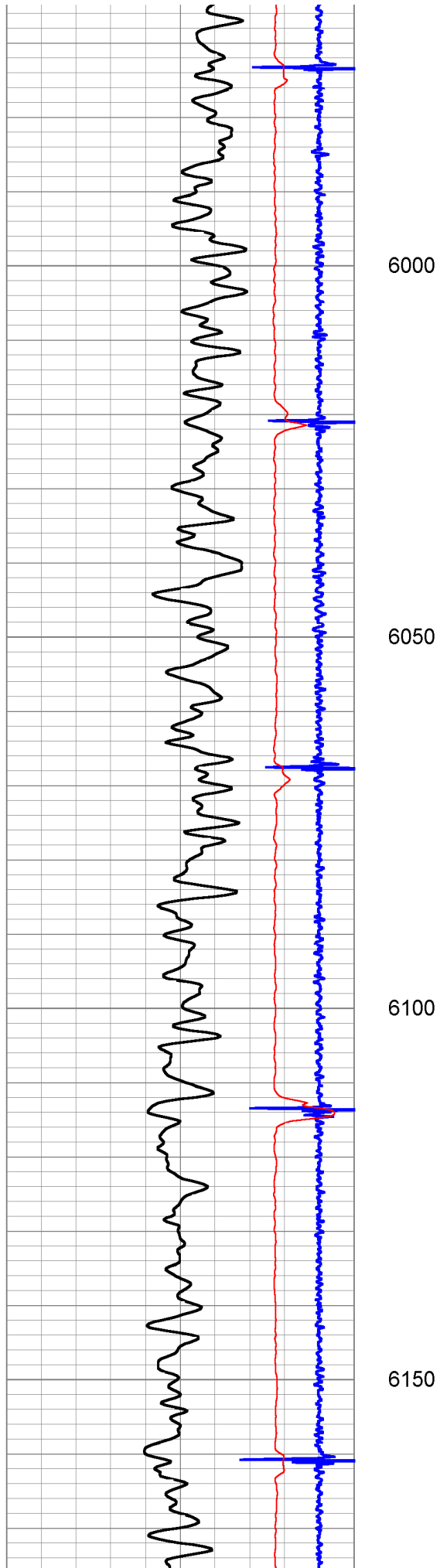


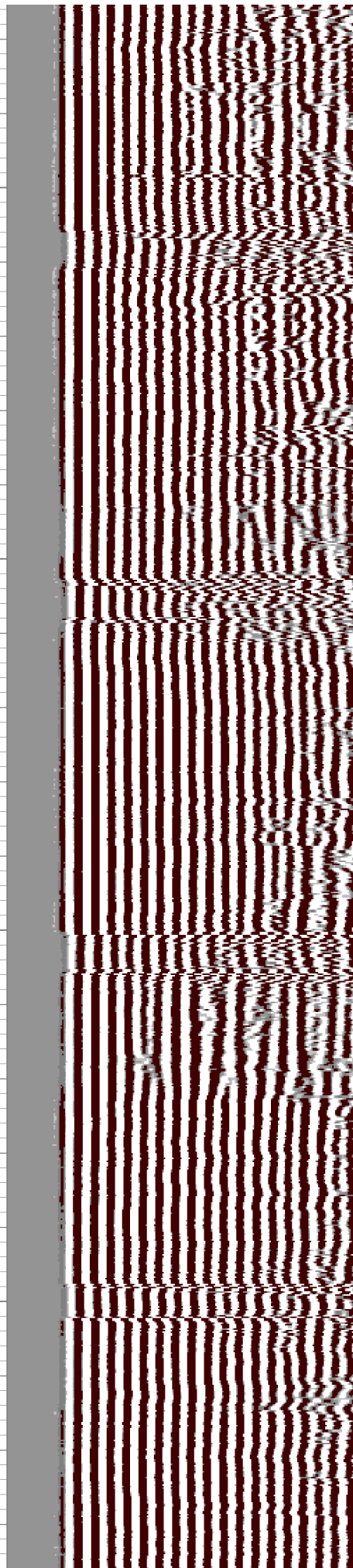
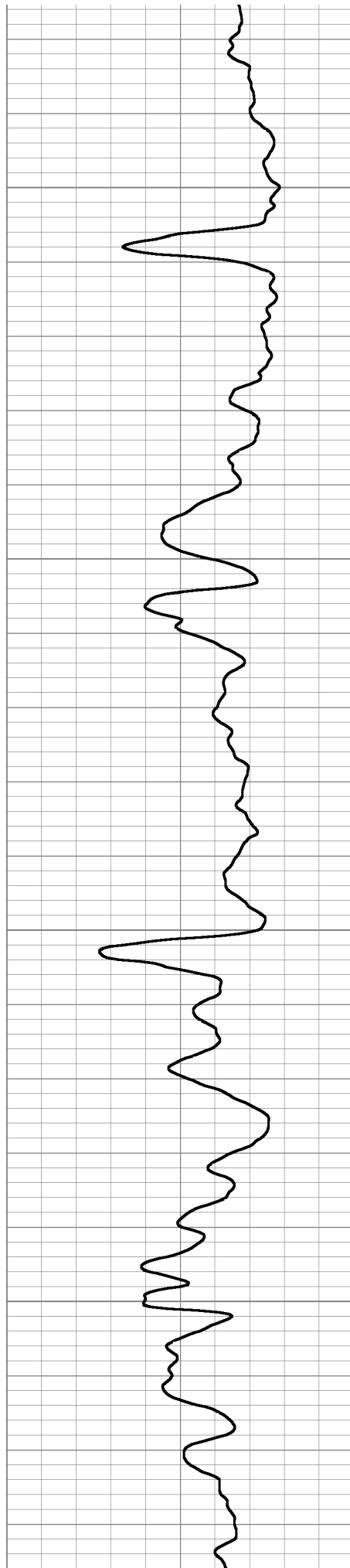
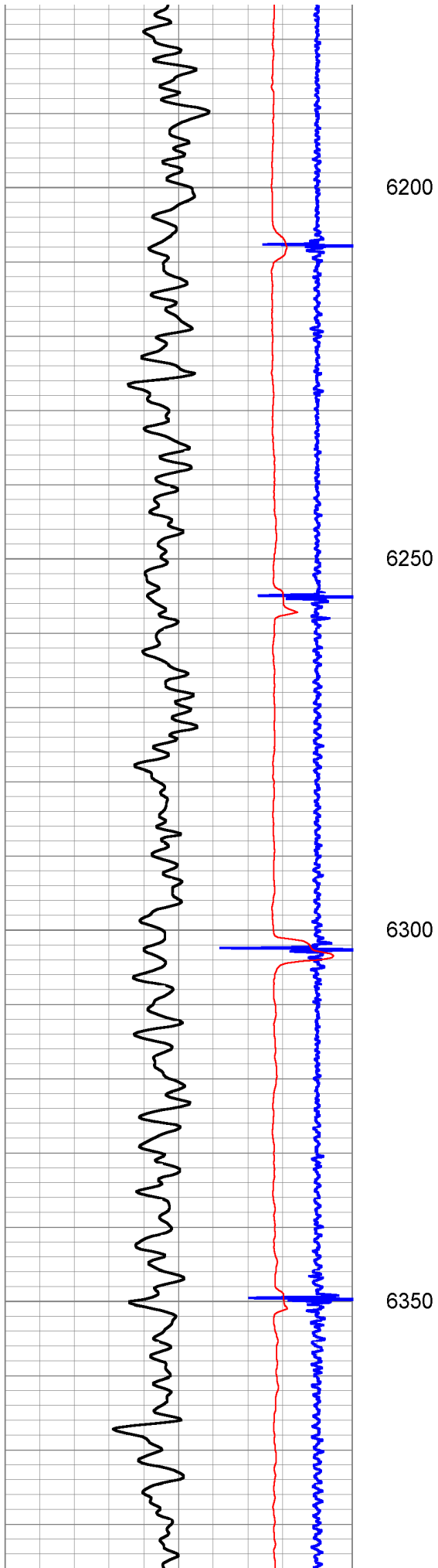


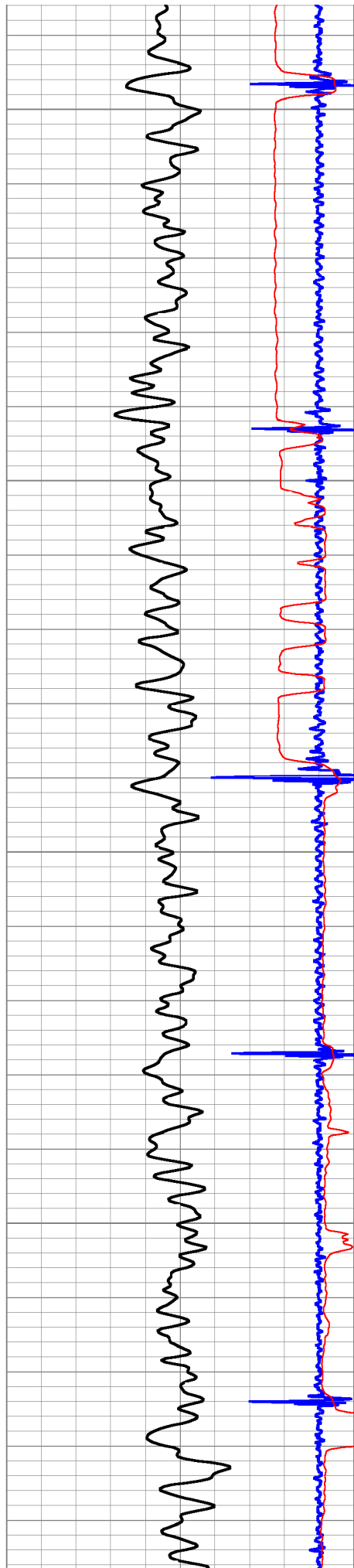










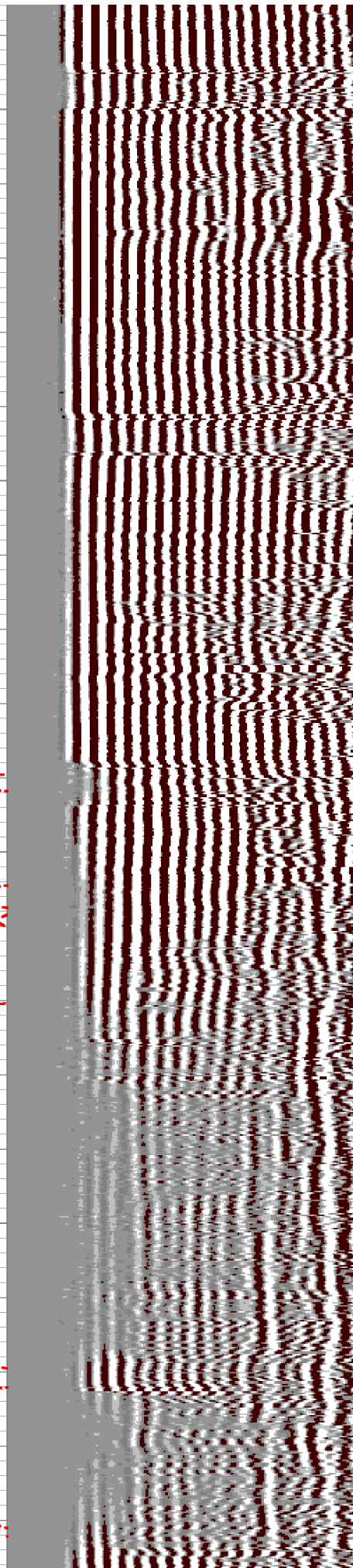
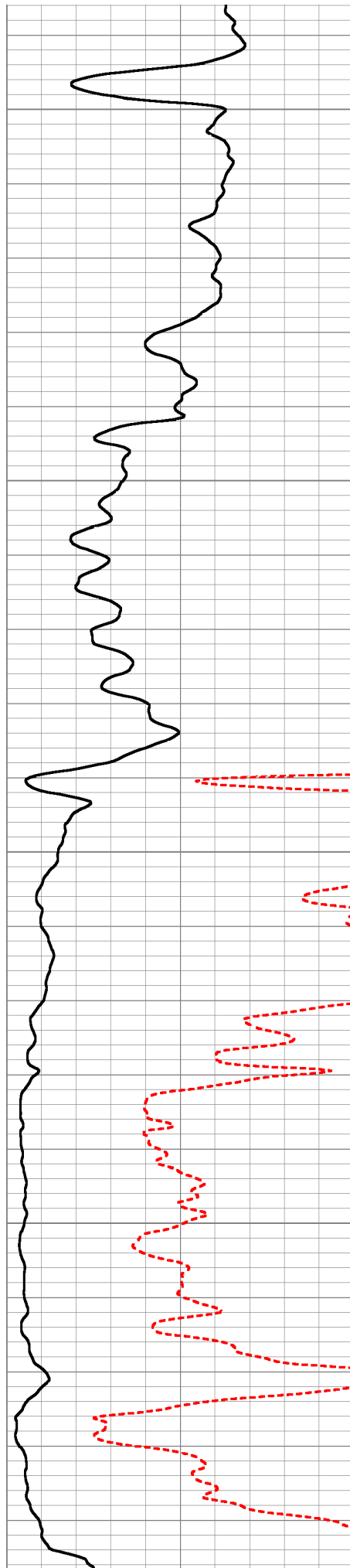


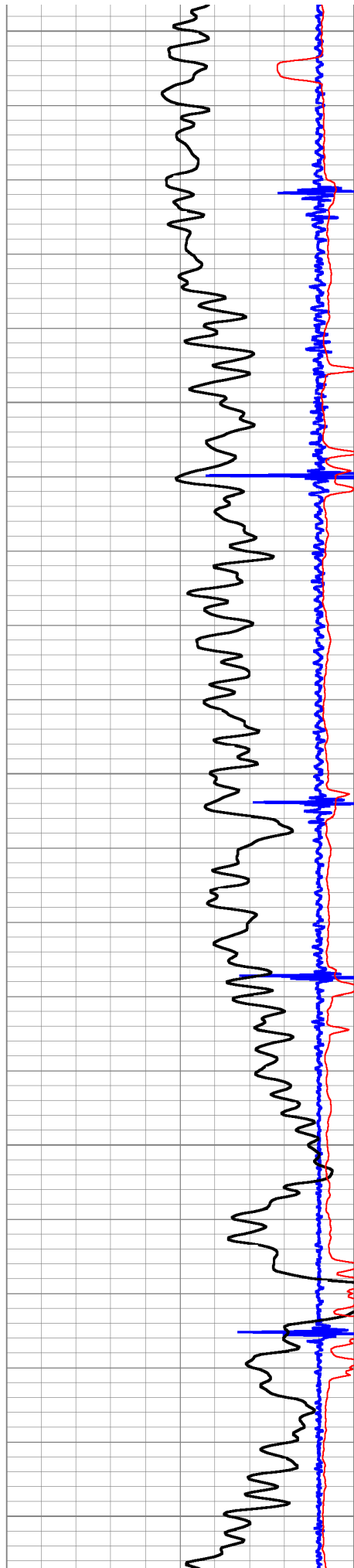
6400

6450

6500

6550





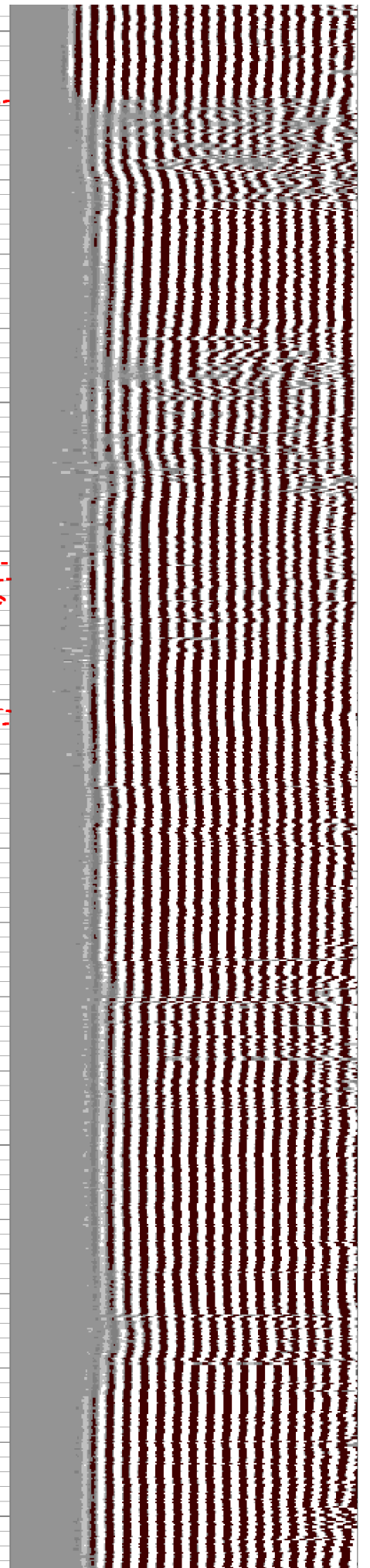
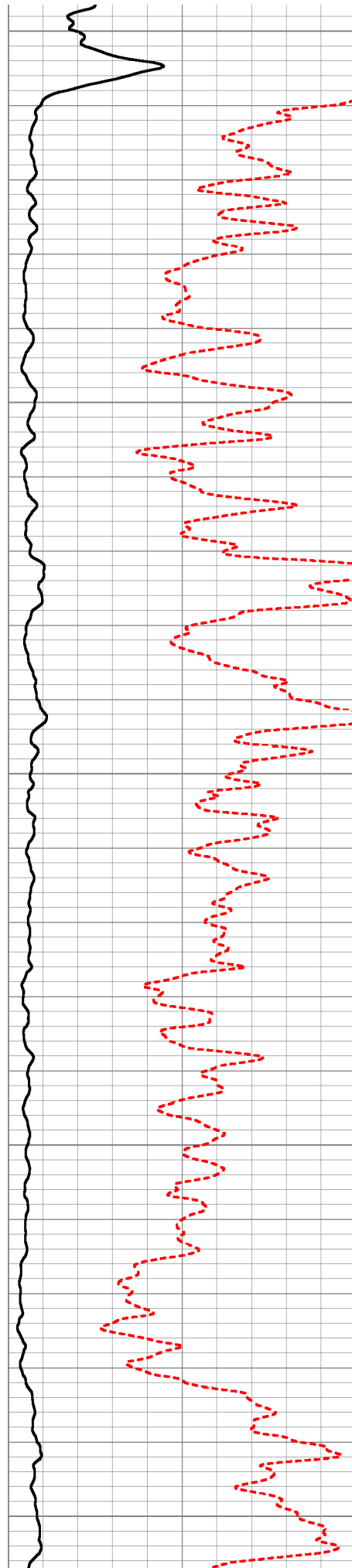
6600

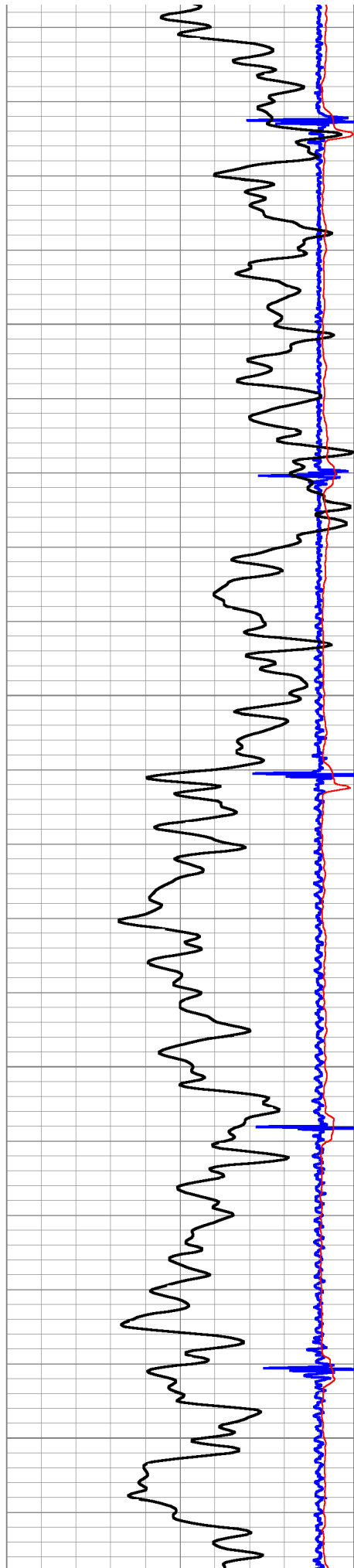
6650

6700

6750

6800



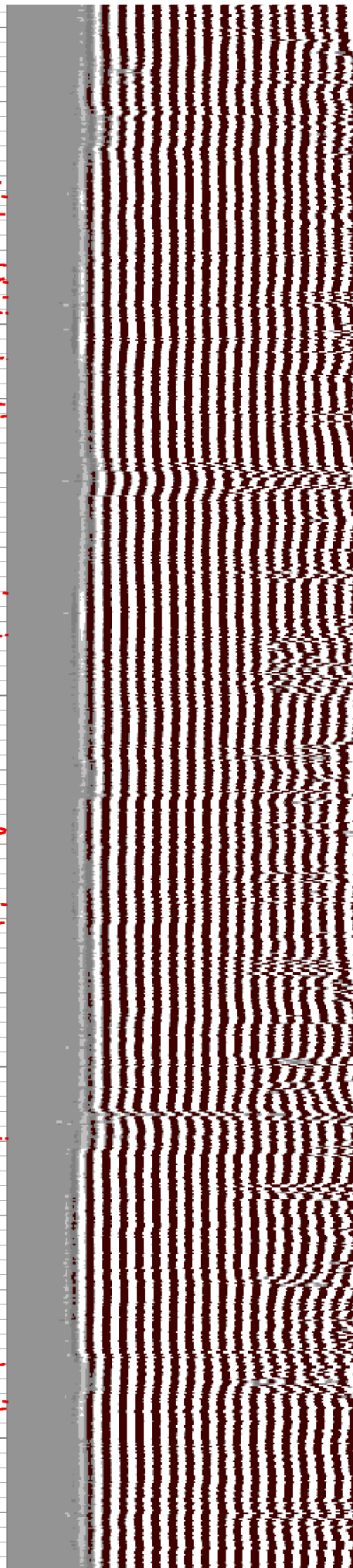
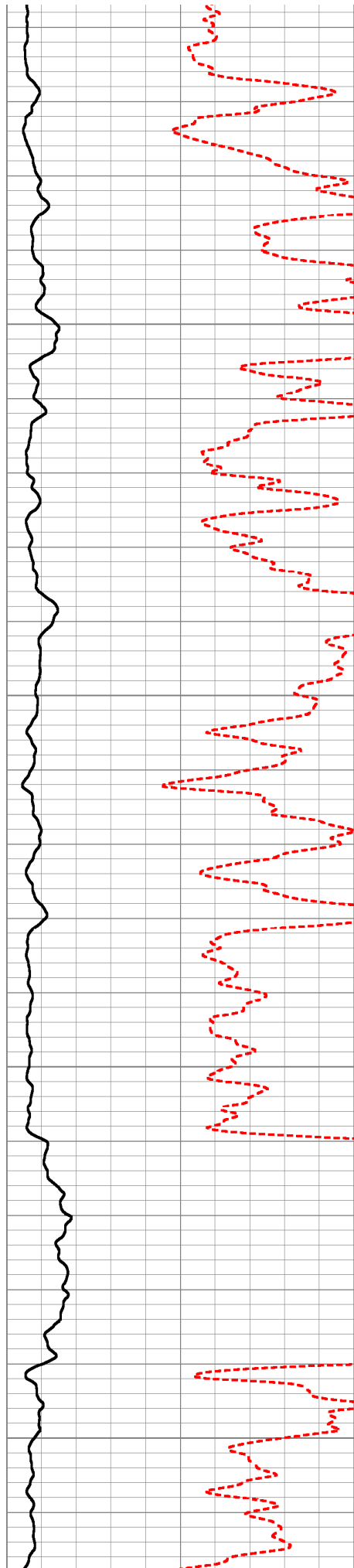


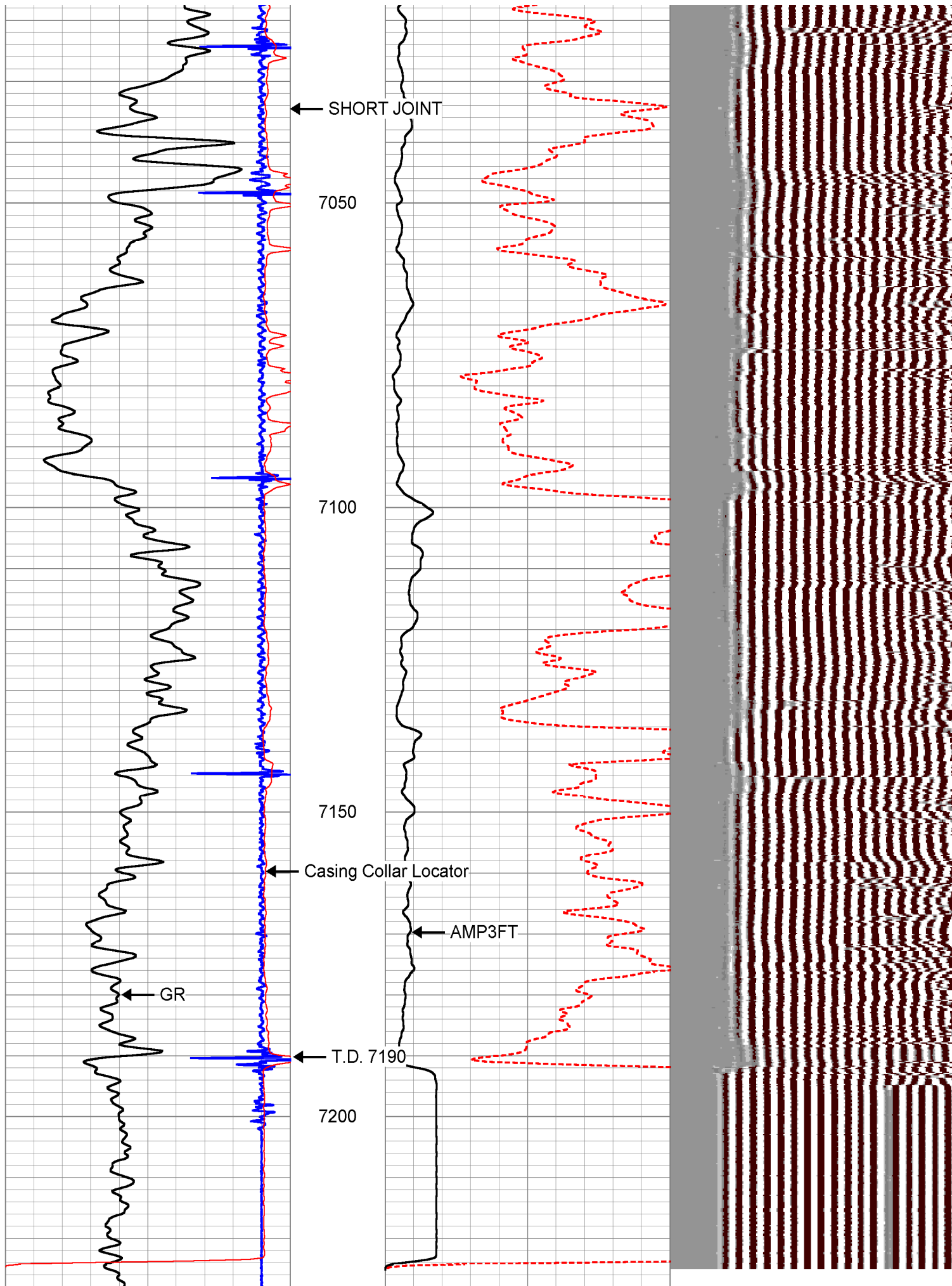
6850

6900

6950

7000





9	Collar Locator	-1
0	GR (GAPI)	150
0	TT3FT (usec)	300

0	Amplitude (mV)	100
0	Amplified Amplitude (mV)	10

200 Variable Density 1200

HALLIBURTON

Main Pass

5" = 100'

HALLIBURTON

Repeat Zero PSI

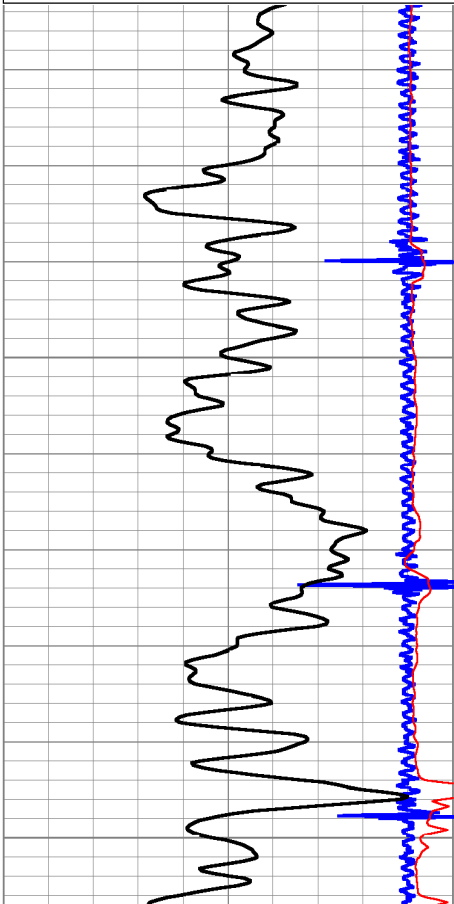
5"=100'

Database File: mr_vetting_1.db
Dataset Pathname: pass6
Presentation Format: cbldig
Dataset Creation: Fri Jun 08 12:13:14 2007 by Log Halliburton Casedho
Charted by: Depth in Feet scaled 1:240

9	Collar Locator	-1
0	GR (GAPI)	150
0	TT3FT (usec)	300

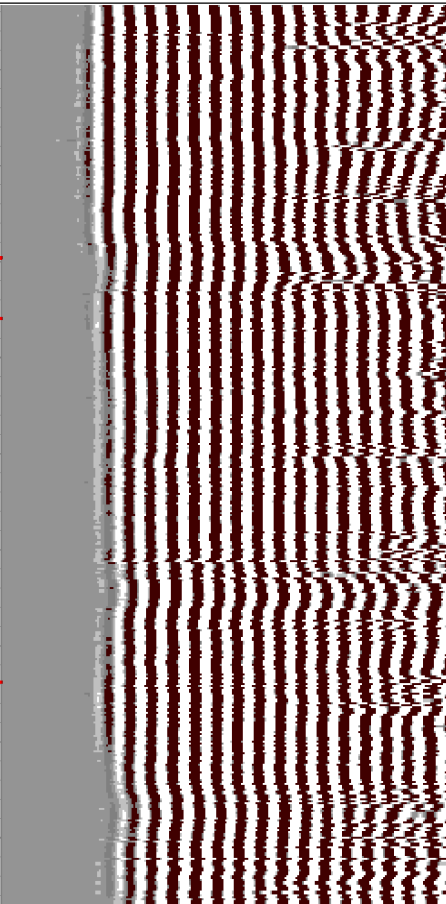
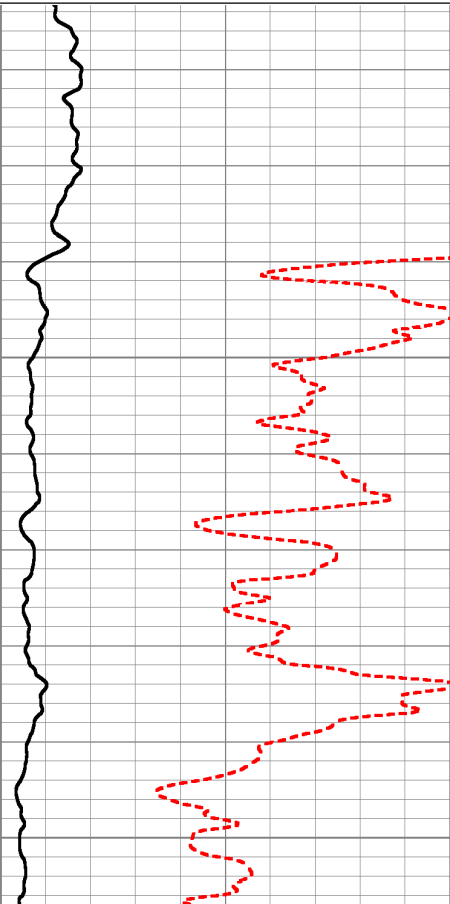
0	Amplitude (mV)	100
0	Amplified Amplitude (mV)	10

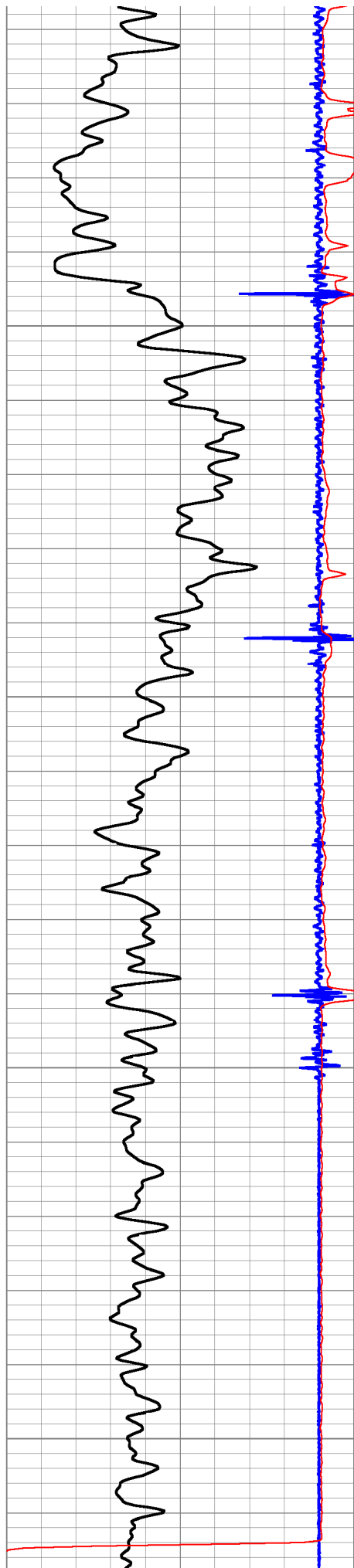
200 Variable Density 1200



7000

7050



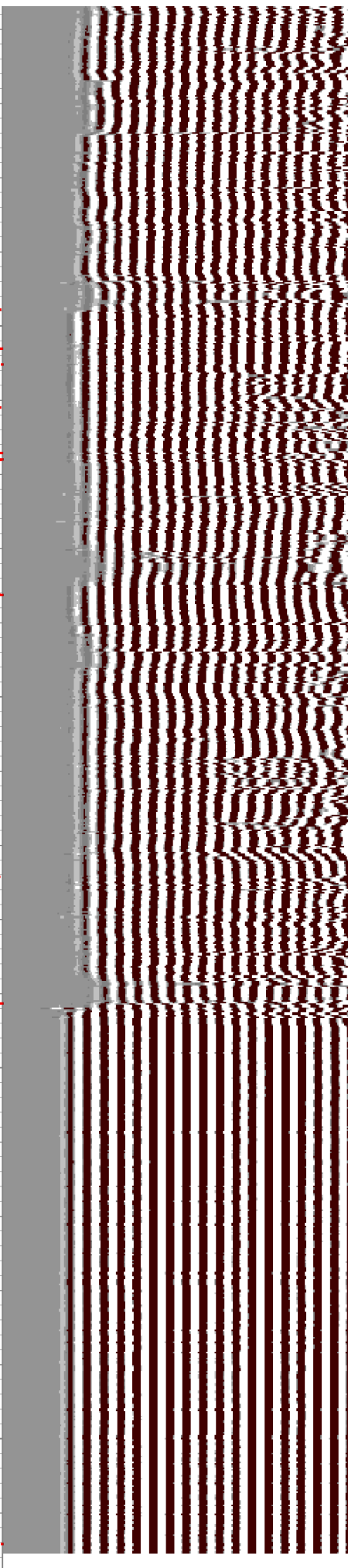
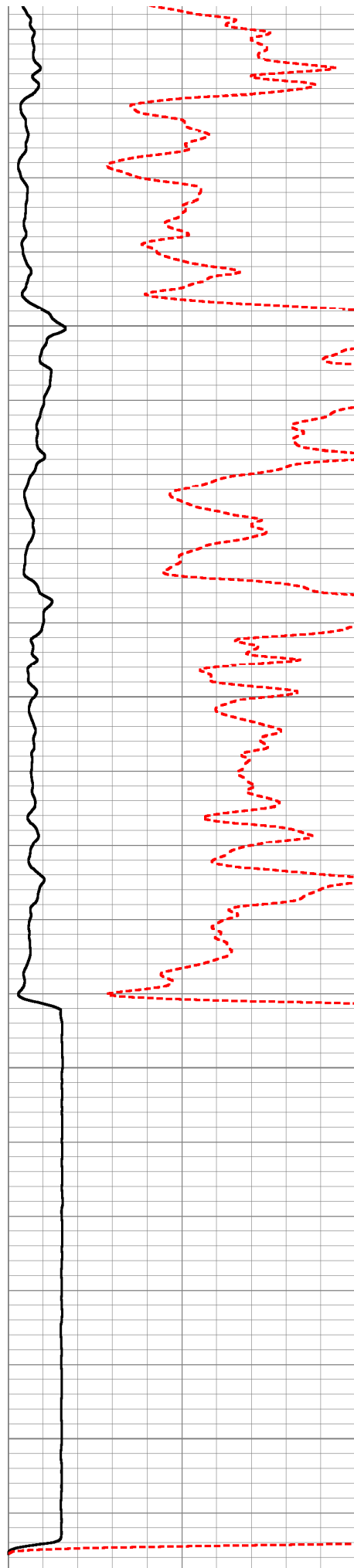


7100

7150

7200

7250



9	Collar Locator	-1	0	Amplitude (mV)	100	200	Variable Density	1200
0	GR (GAPI)	150	0	Amplified Amplitude (mV)	10			
0	TT3FT (usec)	300						

HALLIBURTON

Repeat Zero PSI

5"=100'

Calibration Report

Database File: mr_vetting_1.db
Dataset Pathname: pass7
Dataset Creation: Fri Jun 08 12:28:21 2007 by Log Halliburton Casedho

Gamma Ray Calibration Report

Type / Serial: probe275dig / pr050806

SHOP CALIBRATION

Tue Nov 01 08:40:24 2005

	Counts/Sec.	Gain	Offset	Jig	Units
Background	79.3				cps
Calibrator	459.5				cps
		0.6312			GAPI/cps

PRIMARY VERIFICATION

Tue Nov 01 08:43:28 2005

Background	48.3				cps
Calibrator	288.5				cps
Difference				240.2	GAPI

BEFORE SURVEY VERIFICATION

Tue Nov 01 08:47:53 2005

Background	47.8				cps
Calibrator	290.6				cps
Difference				242.8	GAPI

AFTER SURVEY VERIFICATION

Tue Nov 01 13:24:17 2005

Background	35.8				cps
Calibrator	286.1				cps
Difference				250.2	GAPI

CBL Calibration Report

Serial Number: 040201
Tool Model: PRB275_Dig
Performed: Fri May 11 10:59:20 2007

Depth: 3401.290 ft
Casing Diameter: 4.500 in

3' Spacing

Signal Zero: 0.000 mV

Calibrated Amplitude:	81.196	mV
Reading at Signal Zero:	-0.000	V
Reading in Free Pipe:	2.206	V
Gain:	36.798	
Offset:	0.006	

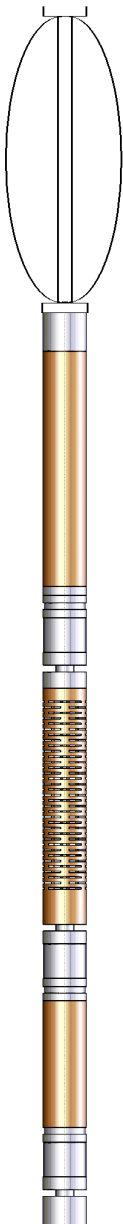
Log Variables

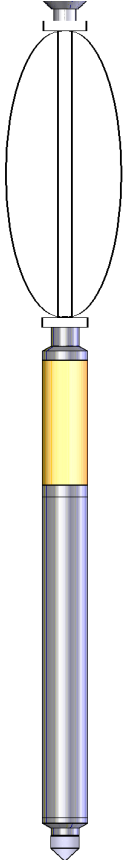
Database: C:\Warrior\Data\mr_vetting_1.db

Dataset: field/well/run1/pass7

Top - Bottom

PPT usec 0	CASEWGHT lb/ft 13.5	MAXAMPL mV 81	MINAMPL mV 1	MINATTN db/ft 0.8	CASEOD in 4.5	PERFS 0
TDEPTH ft 0	BOTTEMP degF 100	BOREID in 7.875				

Sensor	Offset (ft)	Schematic	Description	Len (ft)	OD (in)	Wt (lb)
			Probe_275 Probe 2 3/4 Centralizer	2.88	2.75	20.00
WVF3FT	12.13		CBL_PRB275D-PRB275_Dig (040201) Probe 2 3/4" Digital 3' & 5' Bond - Move voltage to +/- 150 for cal mode	8.75	2.75	92.00
WVF5FT	11.13					

ProbeHV	7.88		Probe_275 Probe 2 3/4 Centralizer	2.88	2.75	20.00
IntTemp	7.88					
CCL	4.17					
GR	2.79		GR_PRB275-probe275dig (pr050806) Probe Digital Gamma CCL	4.75	2.75	57.00
			STD-Standard (0000)	0.25	0.00	1.00
Dataset: mr_vetting_1.db: field/well/run1/pass7 Total Length: 19.50 ft Total Weight: 190.00 lb O.D.: 2.75 in						

Company	Mineral Resources					
Well	Vetting 1					
Field	Wattenberg					
County	Weld	State	Colorado			
HALLIBURTON						