



SUPERIOR
Black Lick, Pa.
Mercer, Pa.
Wooster, Oh.
Cleveland, Ok.
Trinidad, Co.

CEMENT BOND GAMMA RAY 1000 PSI

Company XTO Energy Inc.

Well New Elk 25-01

Field Purgatorie River

County Las Animas

State CO

Company XTO Energy Inc.

Well New Elk 25-01

Field Purgatorie River

County Las Animas

State CO

Location:

API # : 05 071 09356 00

454' FNL & 135' FEL

SEC 25 TWP 33S RGE 68W

Other Services
PRES
CONTROL

Permanent Datum Ground Level Elevation 7943'
Log Measured From Ground Level
Drilling Measured From Ground Level

Elevation

K.B. -----
D.F. -----
G.L. 7943'

Date

9/10/07

Run Number

two

Depth Driller

2225'

Depth Logger

1679'

Bottom Logged Interval

1675'

Top Log Interval

Surf.

Open Hole Size

7 7/8"

Type Fluid

water

Density / Viscosity

///

Max. Recorded Temp.

///

Estimated Cement Top

460'

Time Well Ready

9:15

Time Logger on Bottom

9:30

Equipment Number

0703

Location

Trinidad

Recorded By

Worley

Witnessed By

Mr. Gordin

Run Number

Bit

From

To

Size

Weight

From

To

Casing Record

Size

Surface String

8 5/8"

Prot. String

Wgt/Ft

Production String

Top

Liner

Bottom

496'

00

NA

<<< Fold Here >>>

All interpretations are opinions based on inferences from electrical or other measurements and we cannot and do not guarantee the accuracy or correctness of any interpretation, and we shall not, except in the case of gross or willful negligence on our part, be liable or responsible for any loss, costs, damages, or expenses incurred or sustained by anyone resulting from any interpretation made by any of our officers, agents or employees. These interpretations are also subject to our general terms and conditions set out in our current Price Schedule.

Comments

Second Bosque entrance four miles after Weston,
right on Apache Canyon, first right after third drive thru location,
end on location.

CBL ran under 1000 PSI.



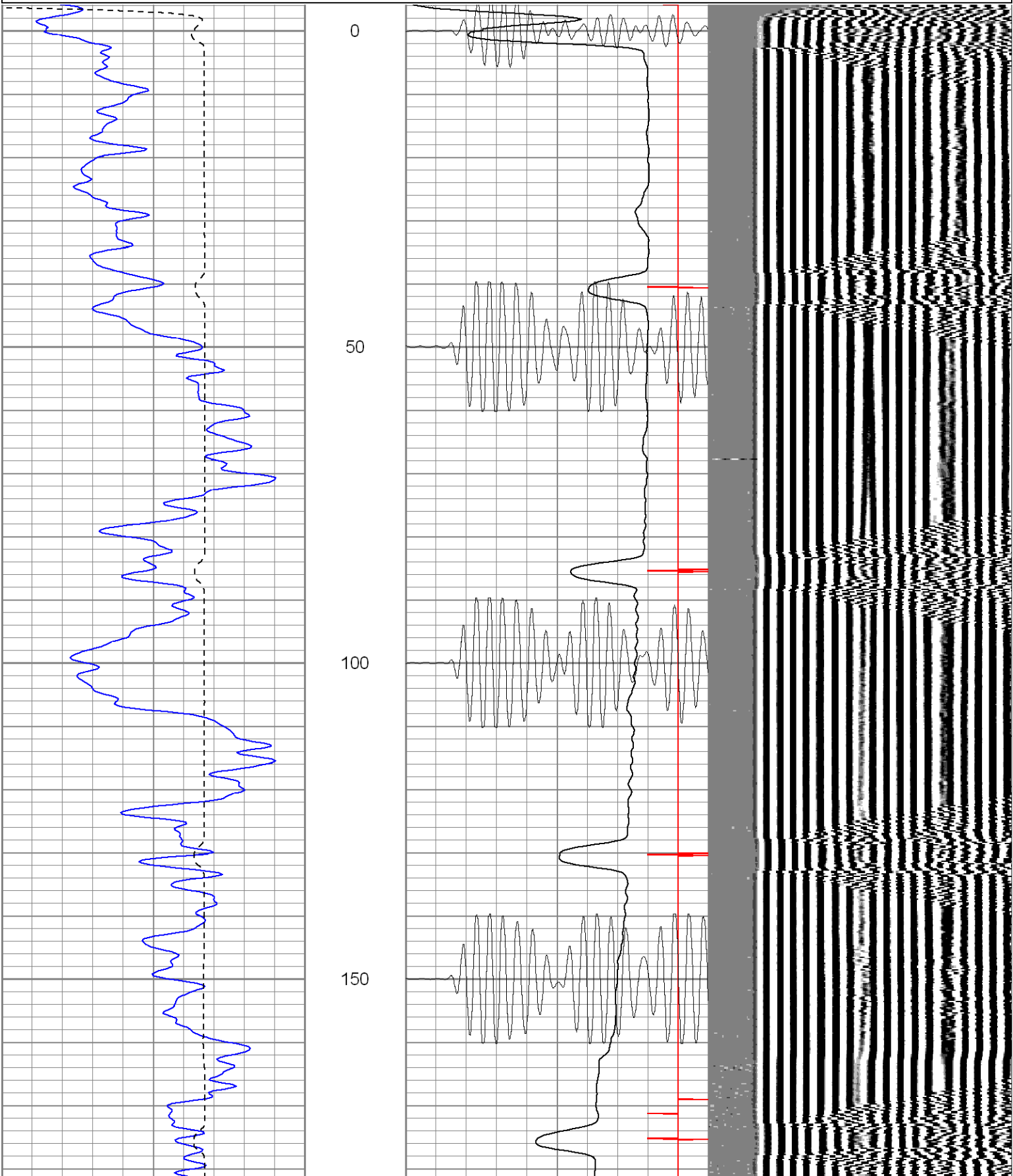
SUPERIOR

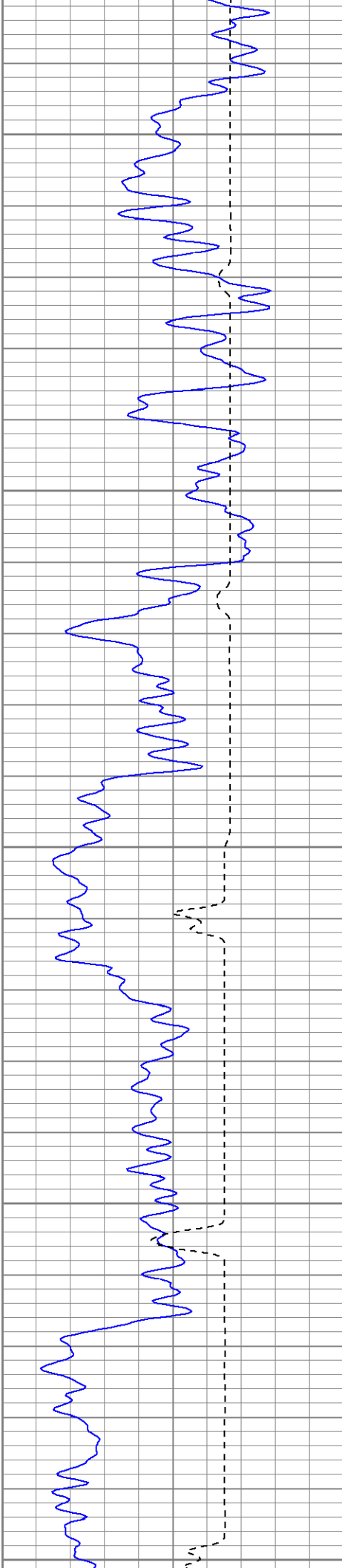
Black Lick, Pa.
Mercer, Pa.
Wooster, Oh.
Cleveland, Ok.
Trinidad, Co.

Main Pass 1000 PSI

Database File: ne25-01b91007.db
Dataset Pathname: pass2
Presentation Format: cblrt
Dataset Creation: Mon Sep 10 09:43:48 2007 by Log Std Casedhole 07051
Charted by: Depth in Feet scaled 1:240

0	GR (GAPI)	200	0	AMP3 (mV)	100	200	CBL5	1200
400	TT3 (usec)	200	18	CCL	-2			
			200	CBL5	1200			





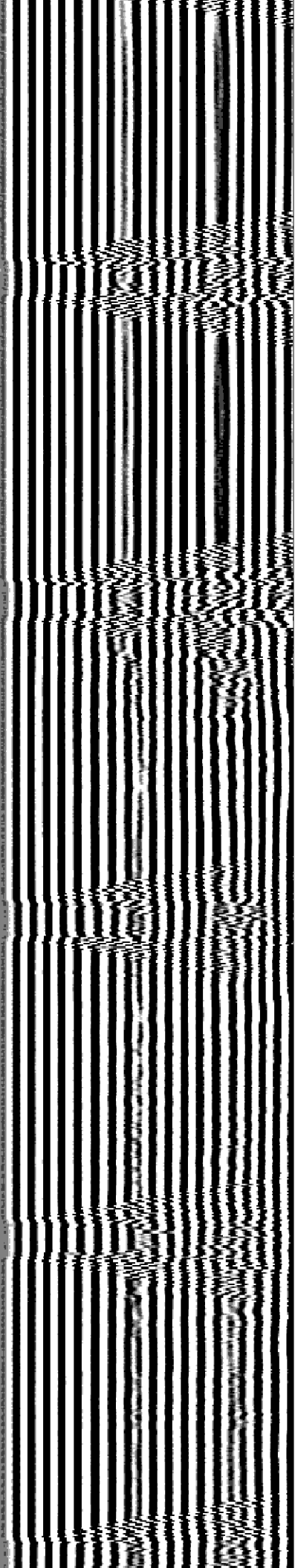
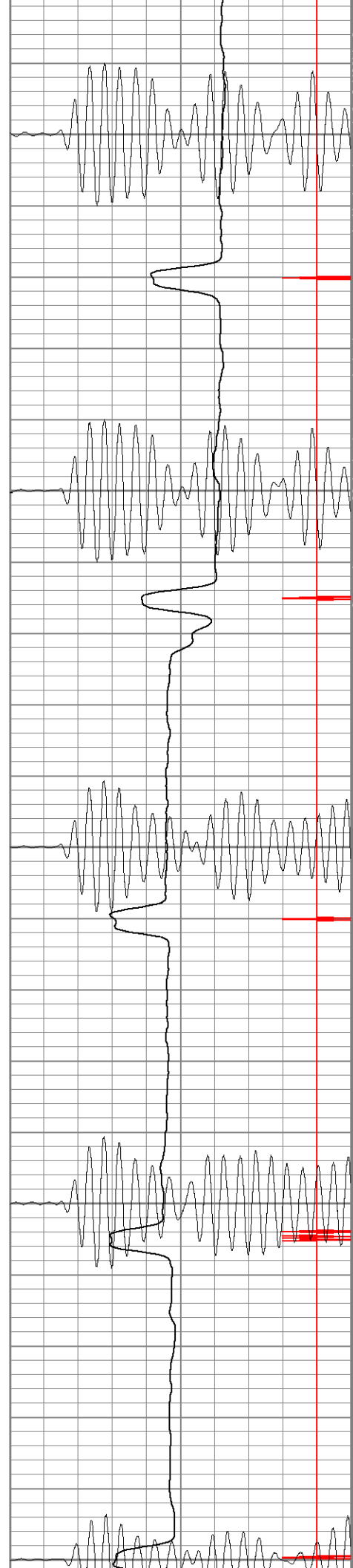
200

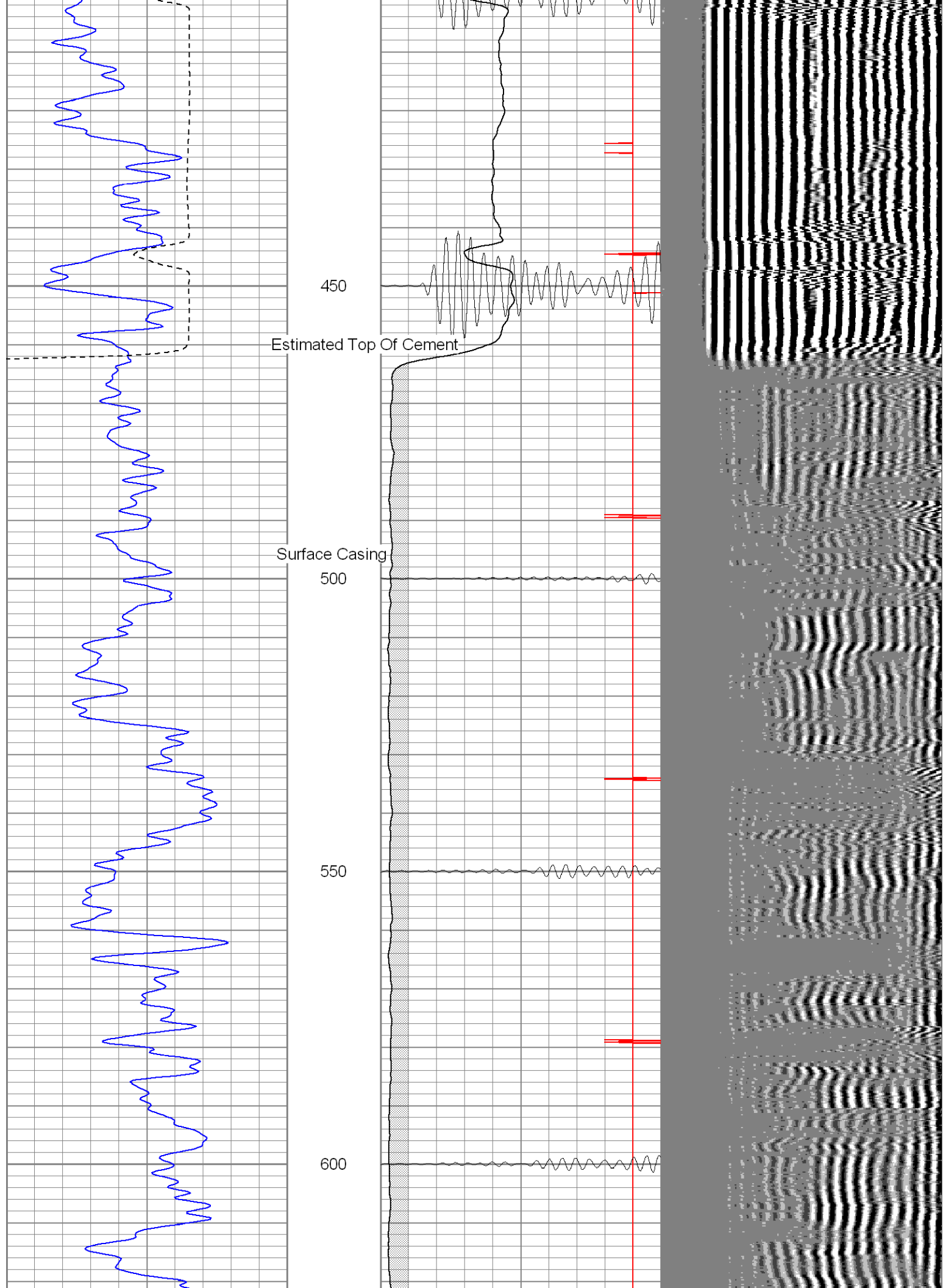
250

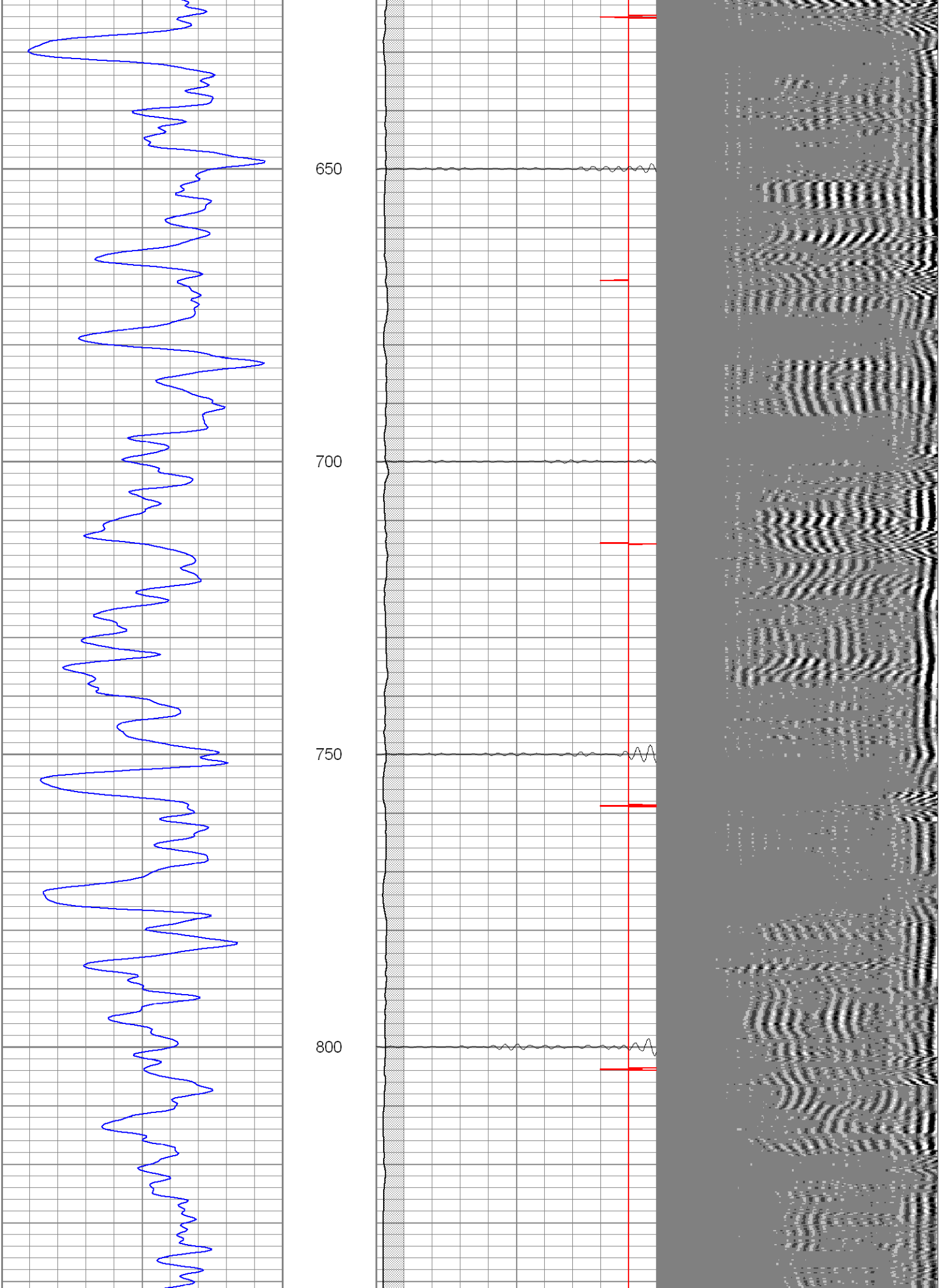
300

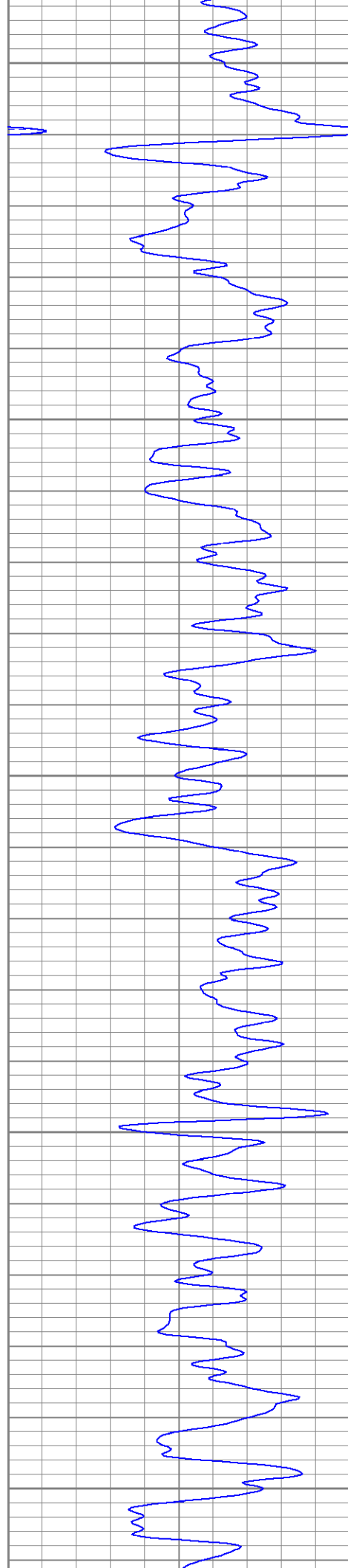
350

400









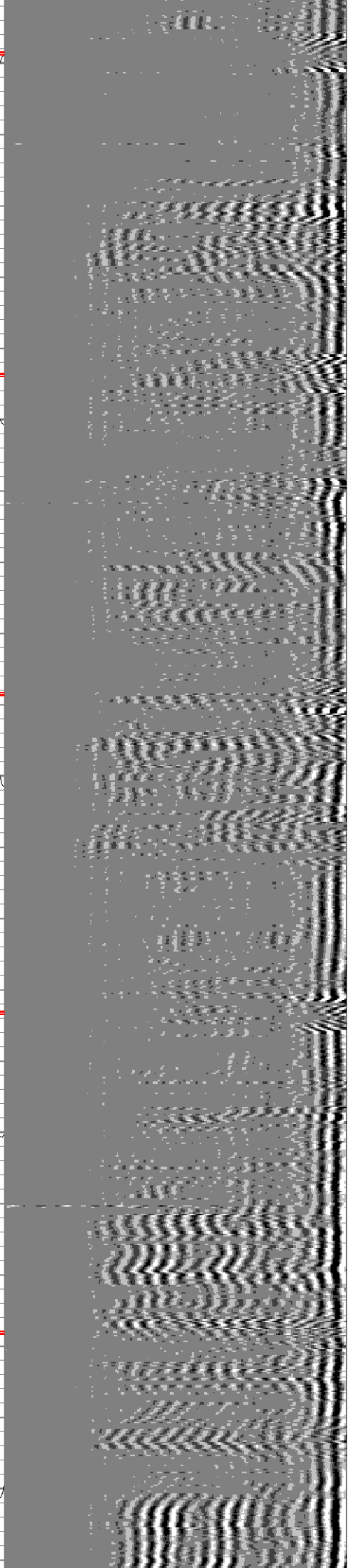
850

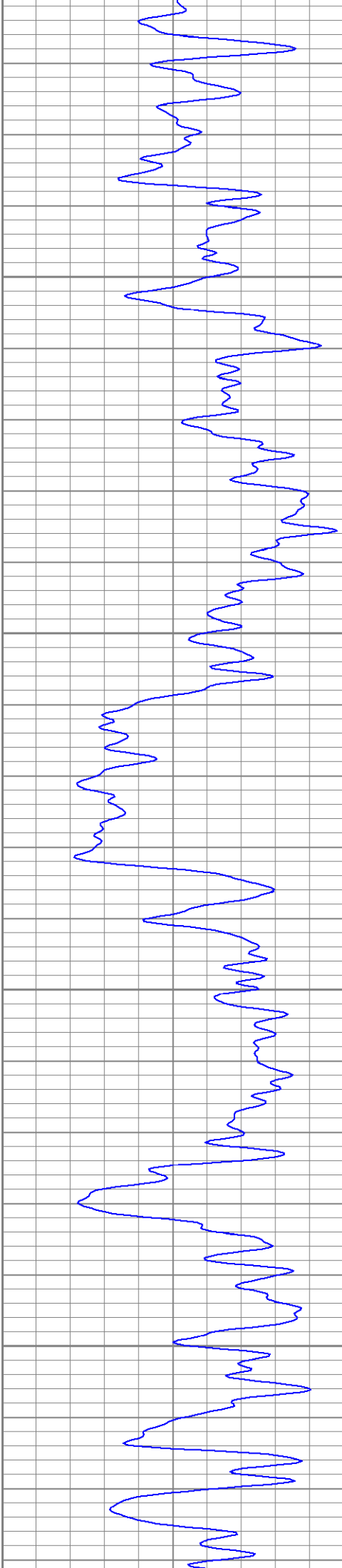
900

950

1000

1050



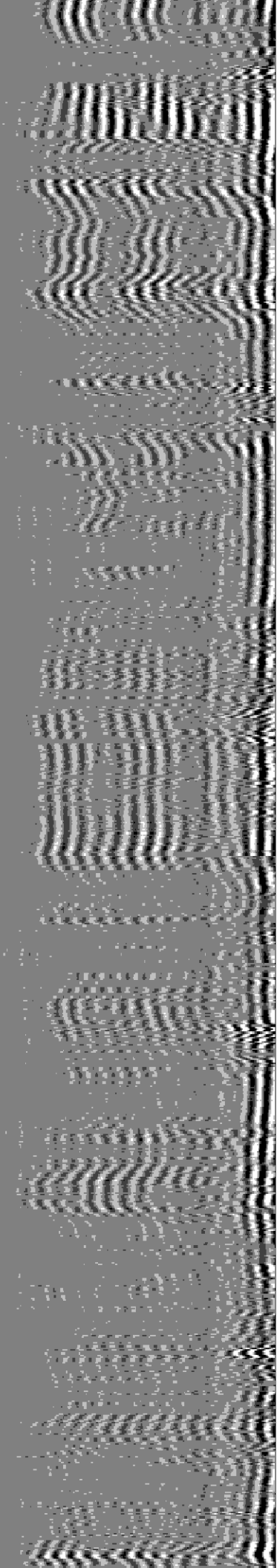


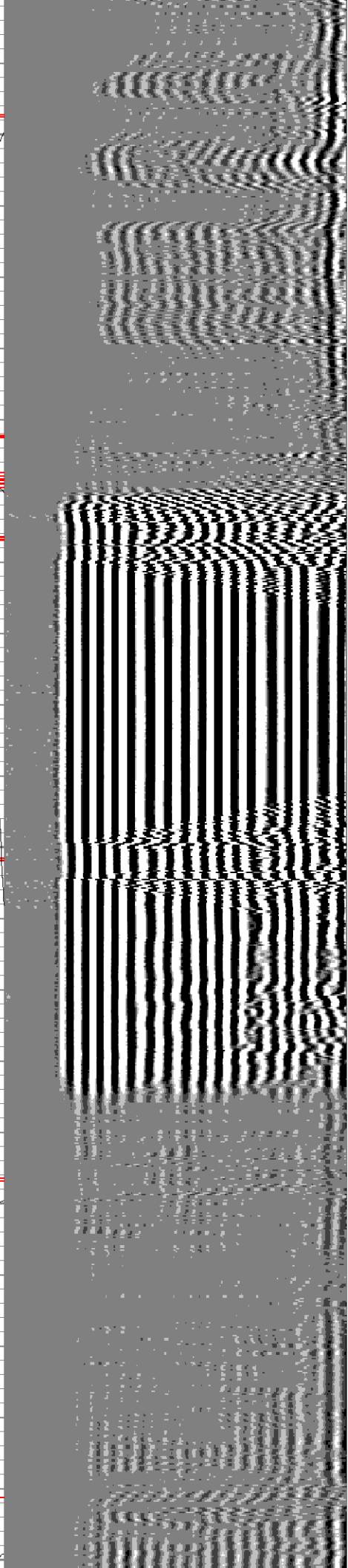
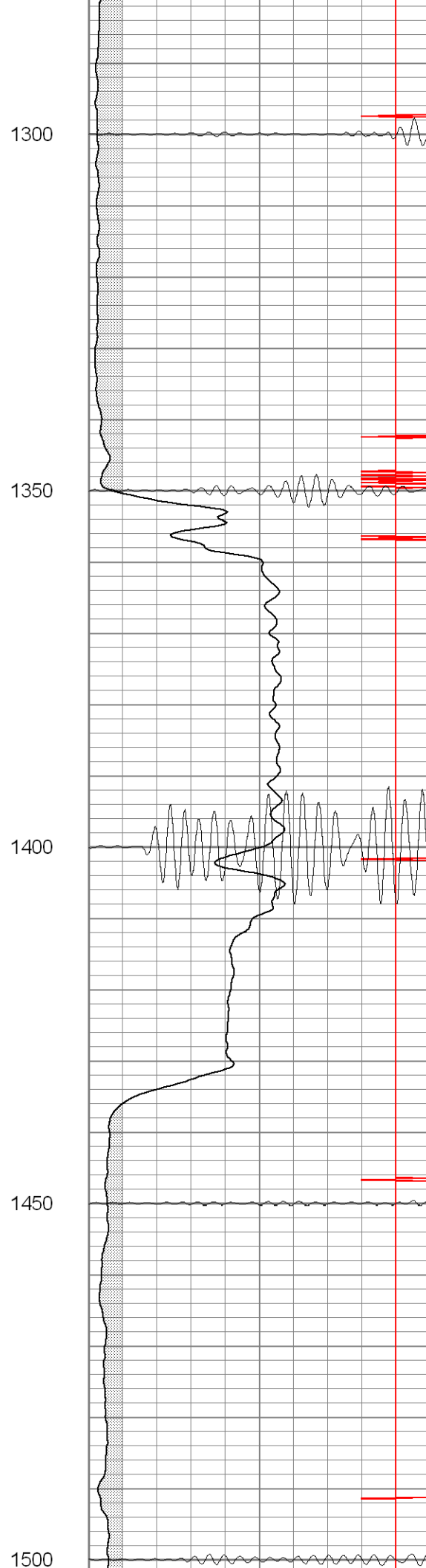
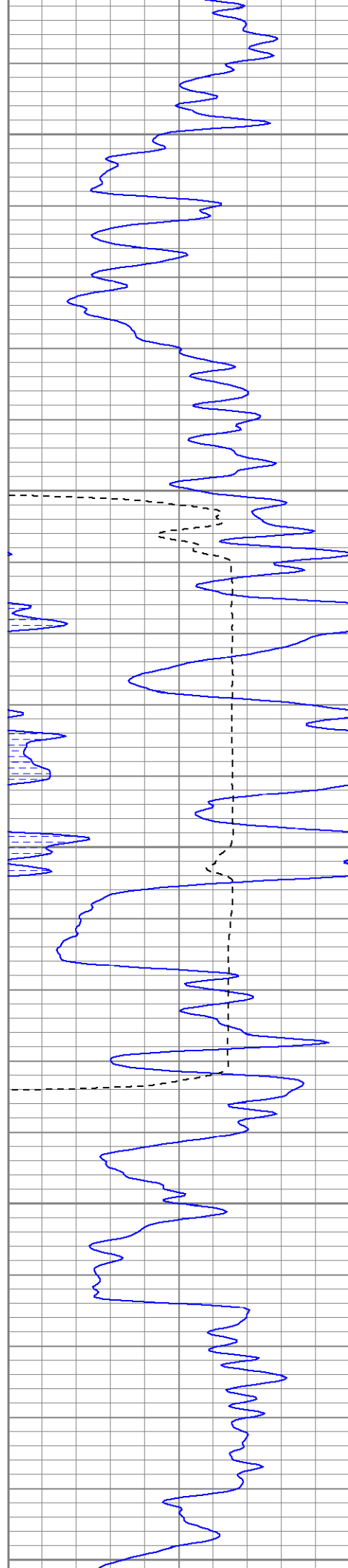
1100

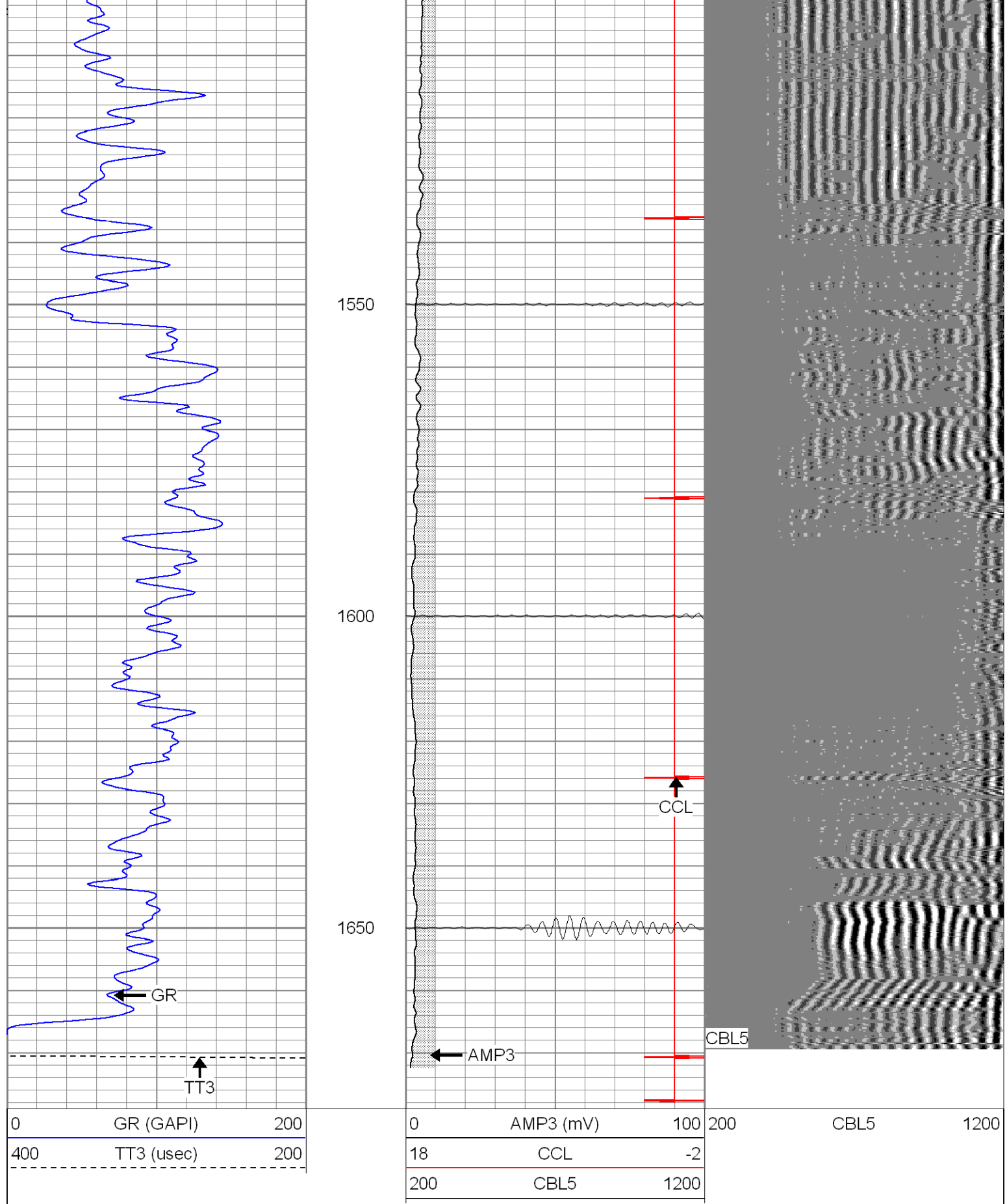
1150

1200

1250







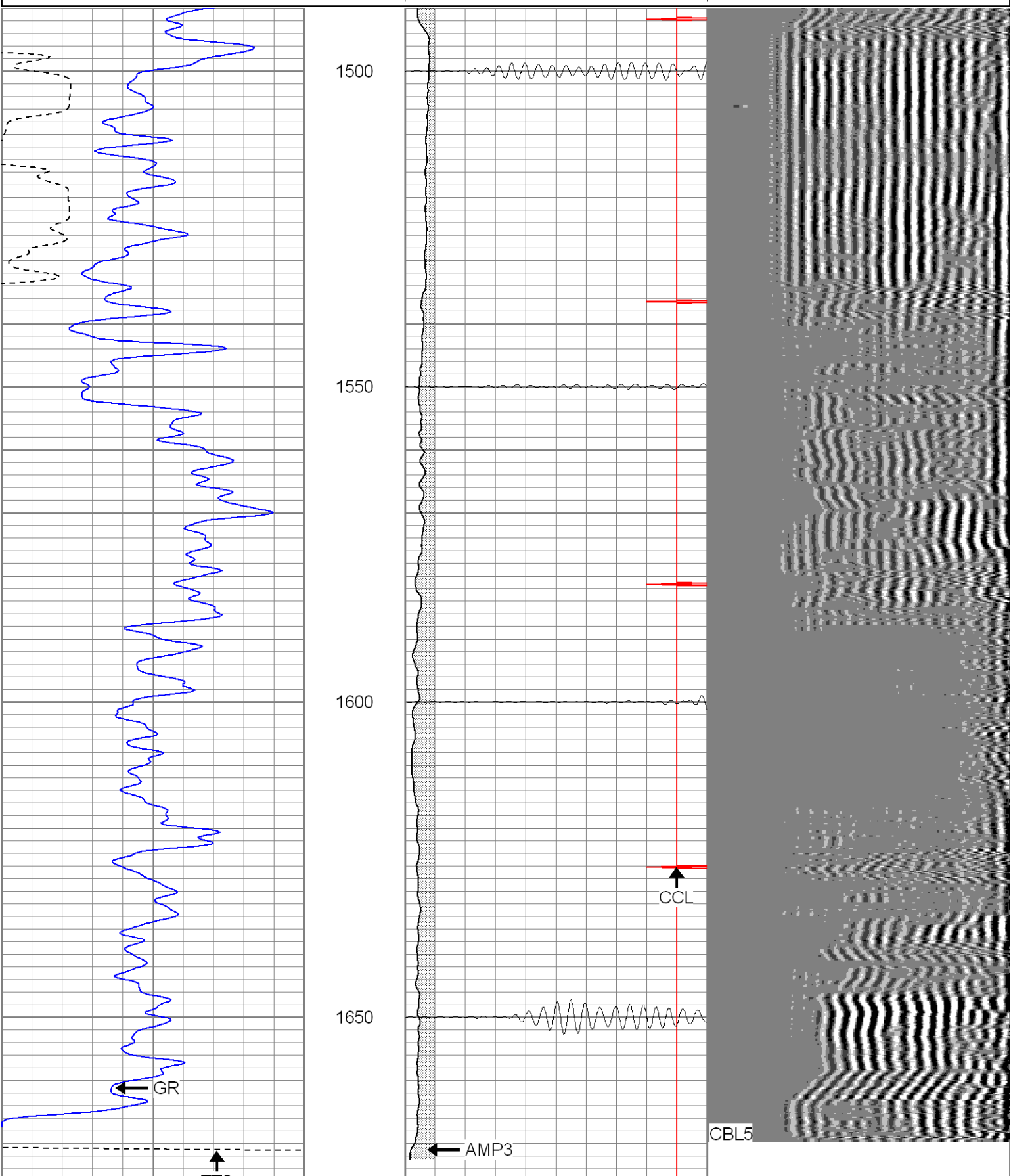
SUPERIOR

Black Lick, Pa.
Mercer, Pa.
Wooster, Oh.
Cleveland, Ok.
Trinidad, Co.

Repeat Section 0 PSI

Database File: ne25-01b91007.db
Dataset Pathname: pass1
Presentation Format: cblrt
Dataset Creation: Mon Sep 10 09:35:23 2007 by Log Std Casedhole 07051
Charted by: Depth in Feet scaled 1:240

0	GR (GAPI)	200	0	AMP3 (mV)	100	200	CBL5	1200
400	TT3 (usec)	200	18	CCL	-2			
			200	CBL5	1200			



0	GR (GAPI)	200
400	TT3 (usec)	200

0	AMP3 (mV)	100
18	CCL	-2
200	CBL5	1200

200 CBL5 1200

Calibration Report

Database File: ne25-01b91007.db

Dataset Pathname: pass1

Dataset Creation: Mon Sep 10 09:35:23 2007 by Log Std Casedhole 07051

Cement Bond Log Calibration Report

Serial Number: Titan2

Tool Model: T2

Performed: Mon Sep 10 09:29:37 2007

Depth: 0 ft

Casing Diameter: 0 in

3' Spacing

5' Spacing

Signal Zero: 0 0 mV

Calibrated Amplitude: 85 85 mV

Reading at Signal Zero: -0.04 0 V

Reading in Free Pipe: 1.8 1.7 V

Gain: 46.1957 50

Offset: 1.84783 0

Gamma Ray Calibration Report

Serial Number: TITAN2

Tool Model: T2

Performed: Thu Sep 06 11:35:15 2007

Calibrator Value: 1.0 GAPI

Background Reading: 0.0 cps

Calibrator Reading: 1.0 cps

Sensitivity: 1.6000 GAPI/cps