



**SUPERIOR**  
Black Lick, Pa.  
Mercer, Pa.  
Wooster, Oh.  
Cleveland, Ok.  
Trinidad, Co.

# CEMENT BOND GAMMA RAY 1000 PSI

Company XTO Energy Inc.  
Well Golden Eagle 21-14  
Field Purgatorie River  
County Las Animas  
State CO

Company XTO Energy Inc.  
Well Golden Eagle 21-14  
Field Purgatorie River  
County Las Animas  
State CO

Location: API #: 05 071 09213 00

SEC 21 TWP 33S RGE 67W

Permanent Datum Ground Level Elevation 7552'  
Log Measured From Ground Level  
Drilling Measured From Ground Level

Other Services  
PRES  
CONTROL  
Elevation  
K.B. -----  
D.F. -----  
G.L. 7552'

Date				5/21/07			
Run Number				one			
Depth Driller				2300'			
Depth Logger				1649'			
Bottom Logged Interval				1645'			
Top Log Interval				Surf.			
Open Hole Size				7 7/8"			
Type Fluid				water			
Density / Viscosity				///			
Max. Recorded Temp.				///			
Estimated Cement Top				Surf.			
Time Well Ready				7:20			
Time Logger on Bottom				7:30			
Equipment Number				0703			
Location				Trinidad			
Recorded By				Worley			
Witnessed By				Mr. Polley			
Borehole Record				Tubing Record			
Run Number	Bit	From	To	Size	Weight	From	To
Casing Record	Size			Wgt/Ft	Top	Bottom	
Surface String	8 5/8"				00	1130'	
Prot. String							
Production String	5 1/2"				00	NA	
Liner							

<<< Fold Here >>>

All interpretations are opinions based on inferences from electrical or other measurements and we cannot and do not guarantee the accuracy or correctness of any interpretation, and we shall not, except in the case of gross or willful negligence on our part, be liable or responsible for any loss, costs, damages, or expenses incurred or sustained by anyone resulting from any interpretation made by any of our officers, agents or employees. These interpretations are also subject to our general terms and conditions set out in our current Price Schedule.

## Comments

Two miles past Weston (Lopez Canyon) turn right, second left at compressor, second drive thru location.

CBL ran under 1000 PSI.

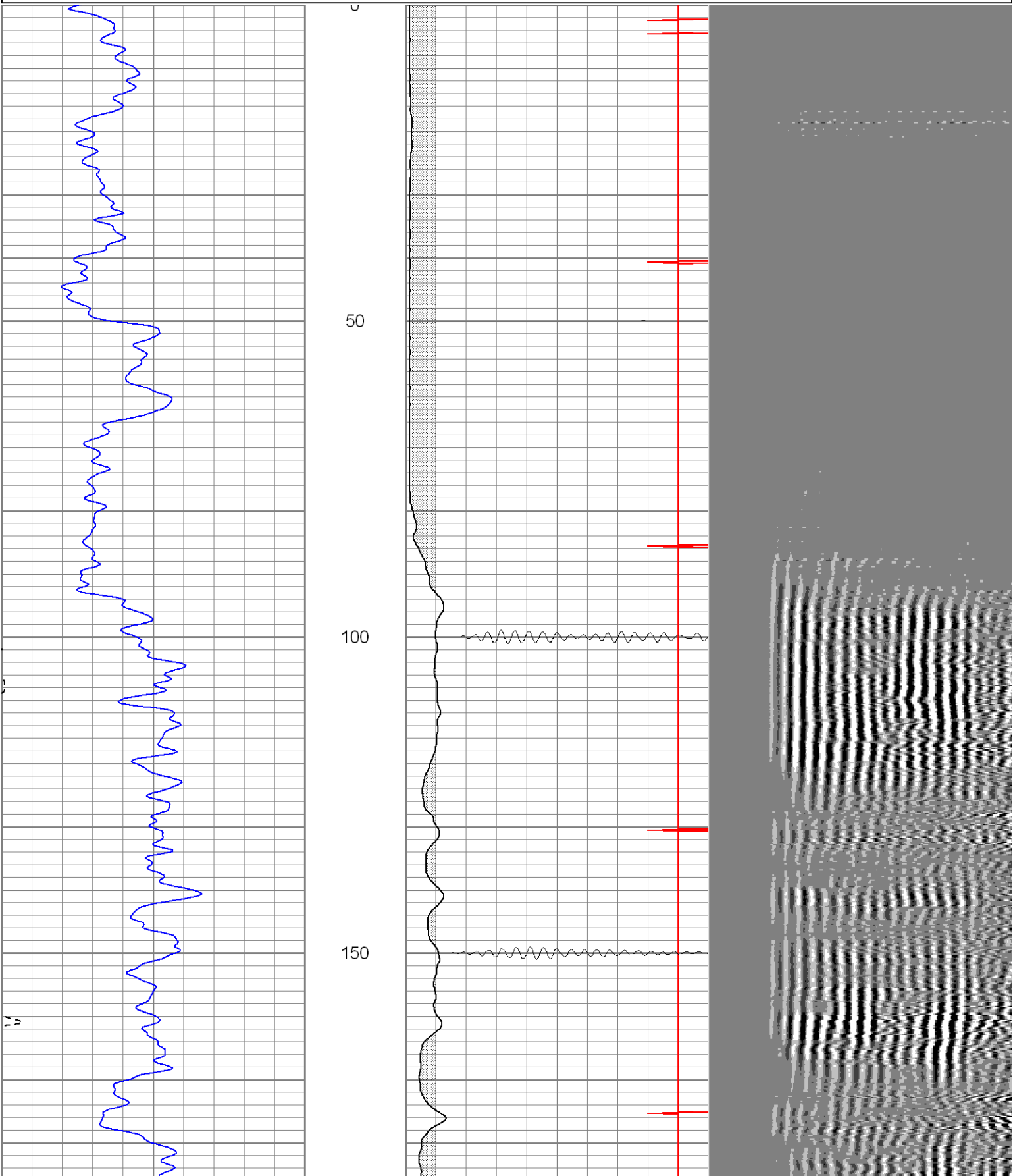


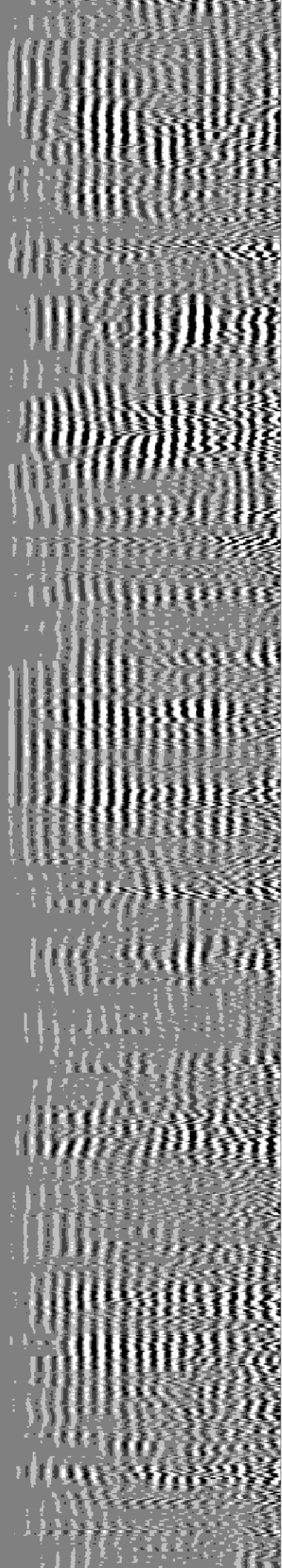
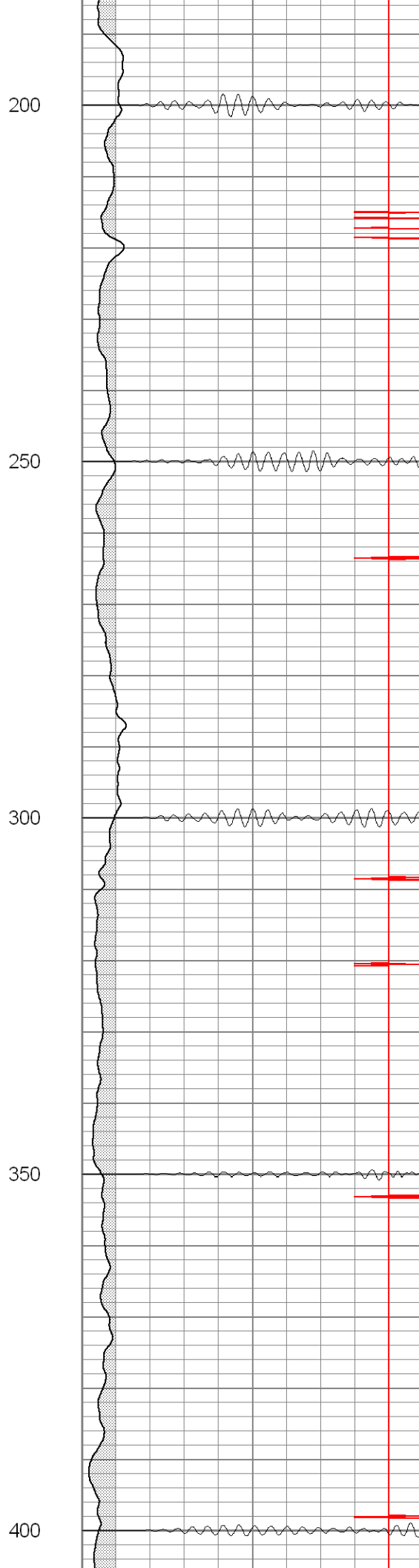
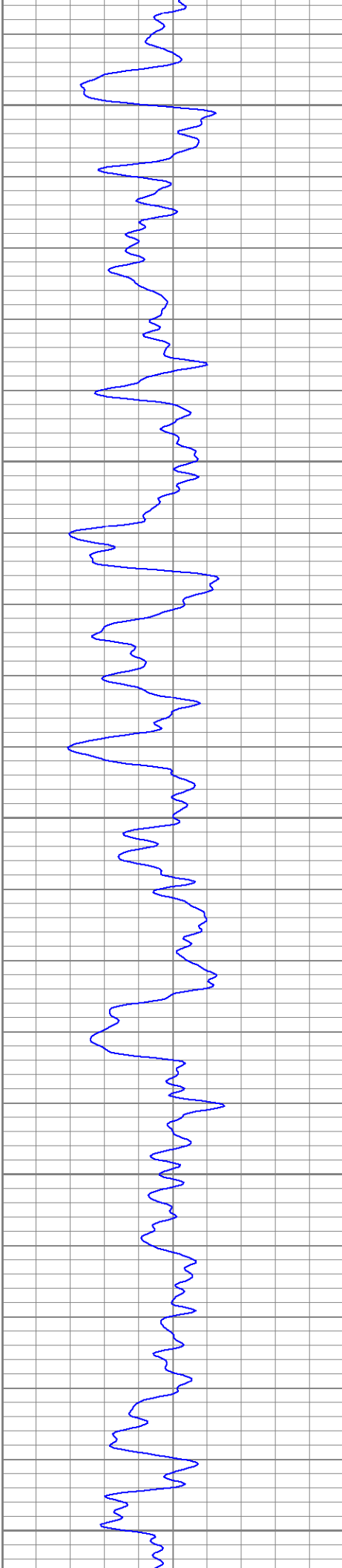
**SUPERIOR**  
Black Lick, Pa.  
Mercer, Pa.  
Wooster, Oh.  
Cleveland, Ok.  
Trinidad, Co.

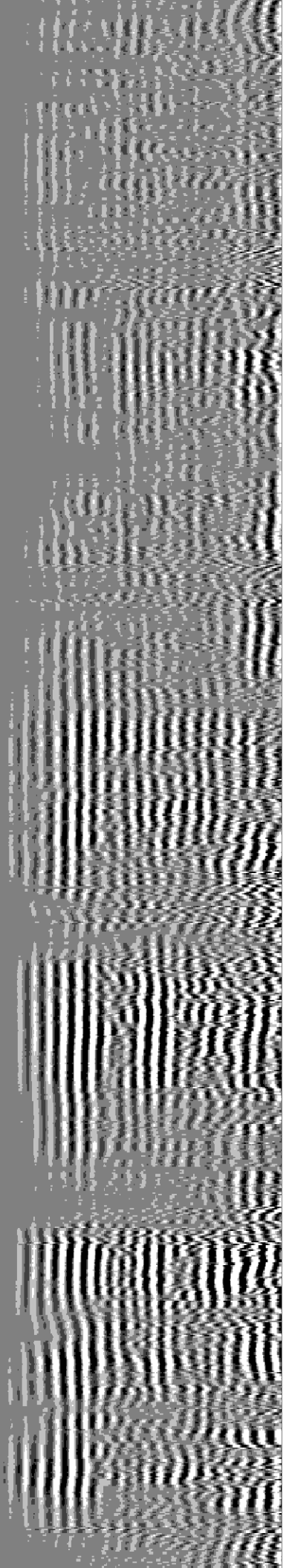
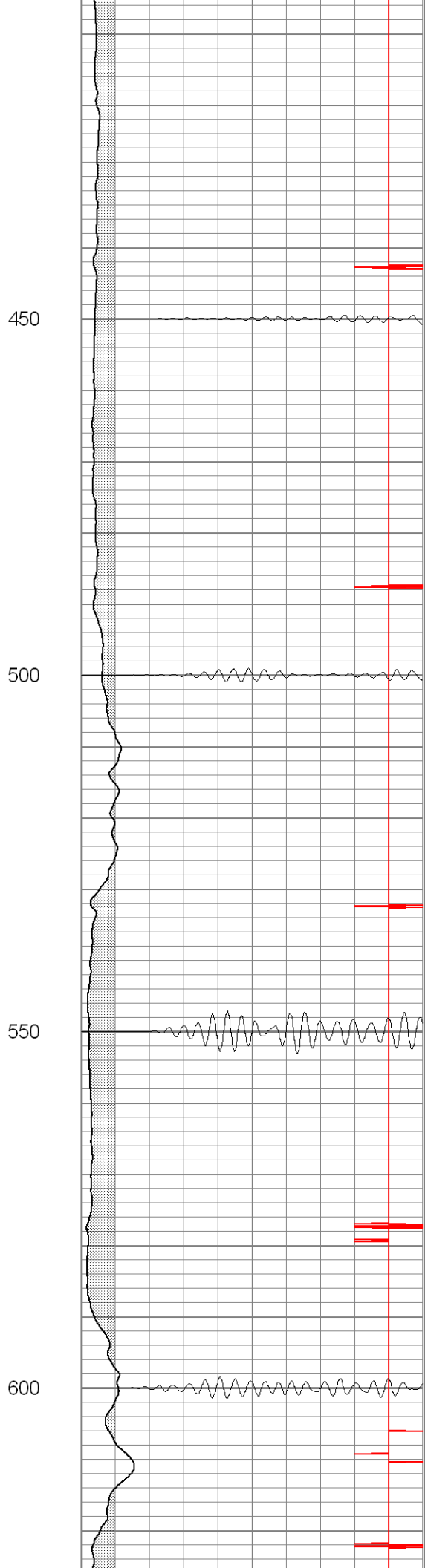
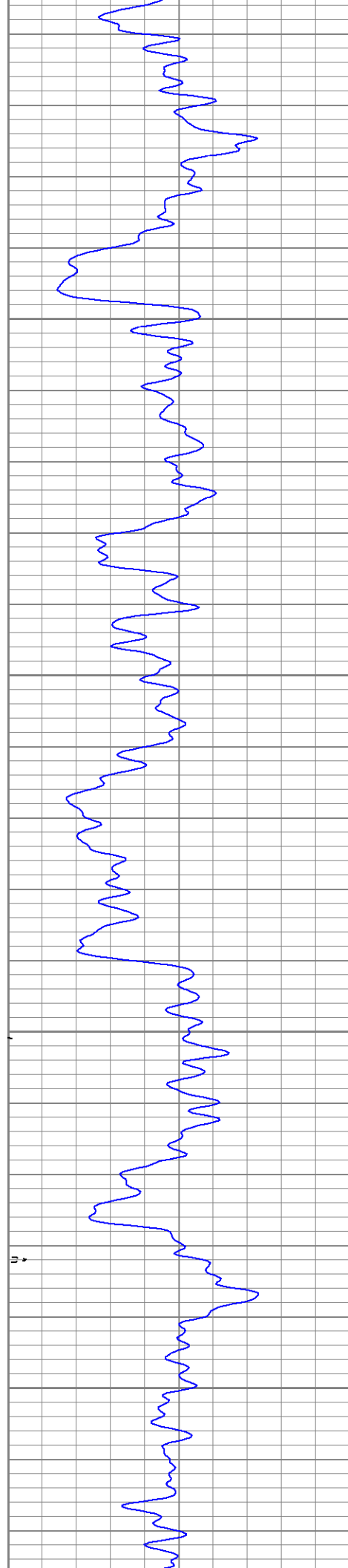
# Main Pass 1000 PSI

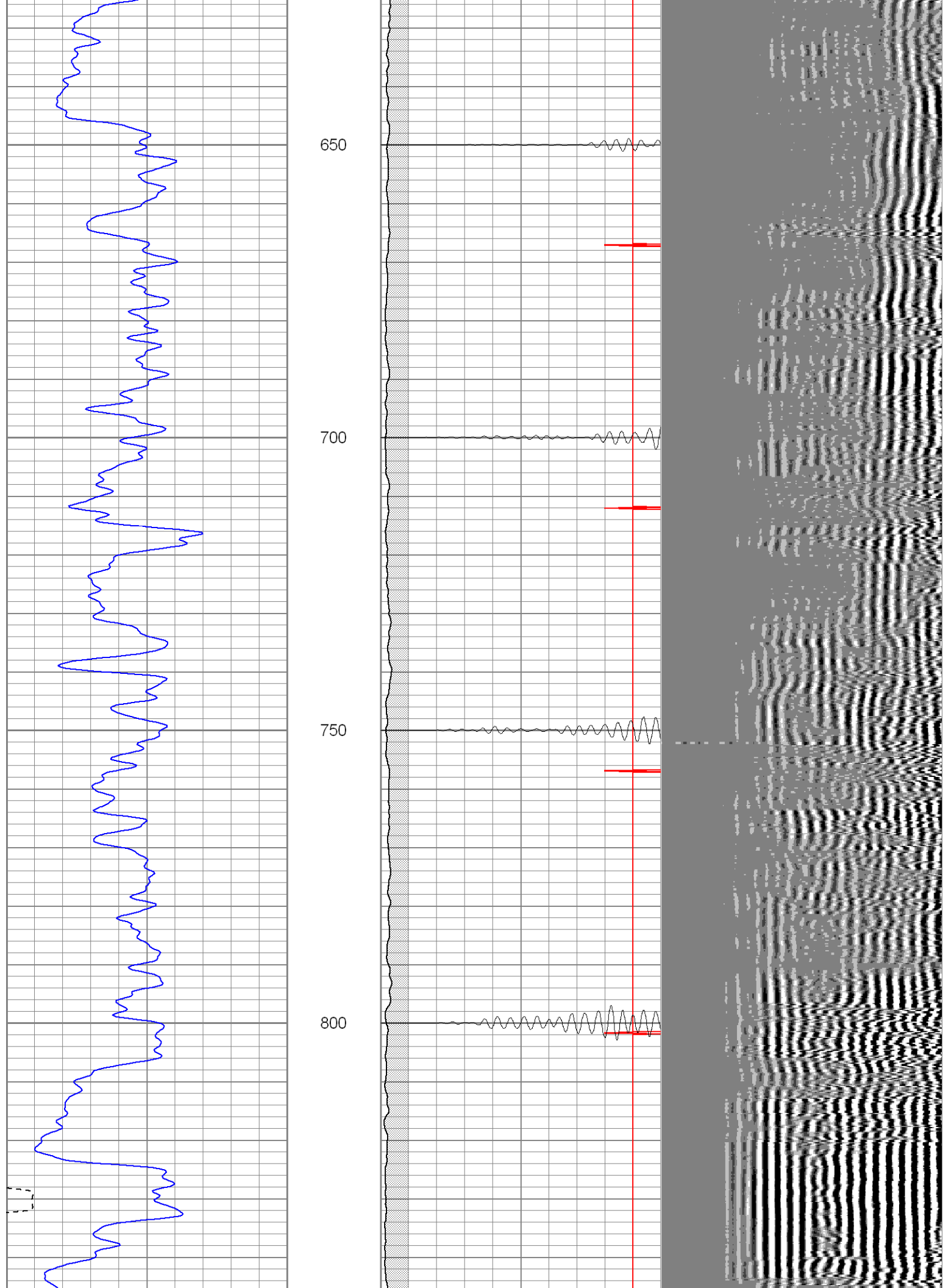
Database File: ge21-14b52107.db  
Dataset Pathname: pass2  
Presentation Format: cblrt  
Dataset Creation: Mon May 21 08:20:20 2007 by Log Warrior 7.0 STD Cas  
Charted by: Depth in Feet scaled 1:240

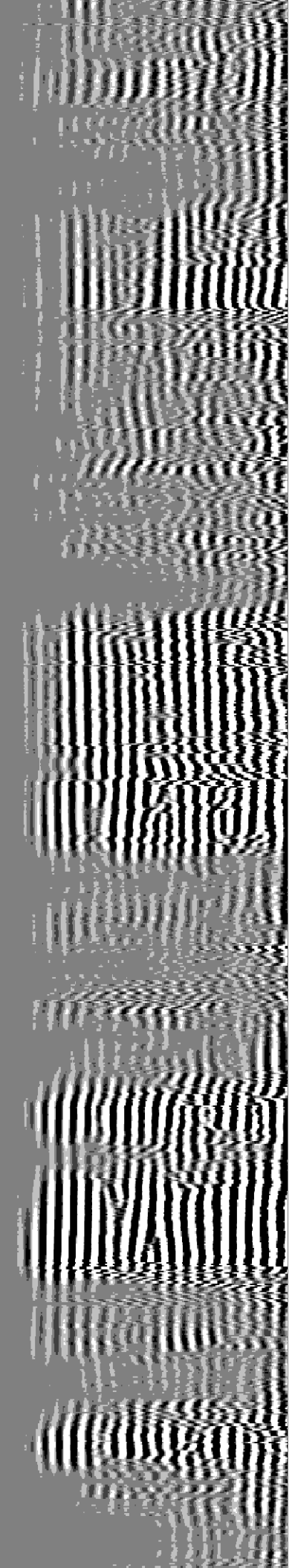
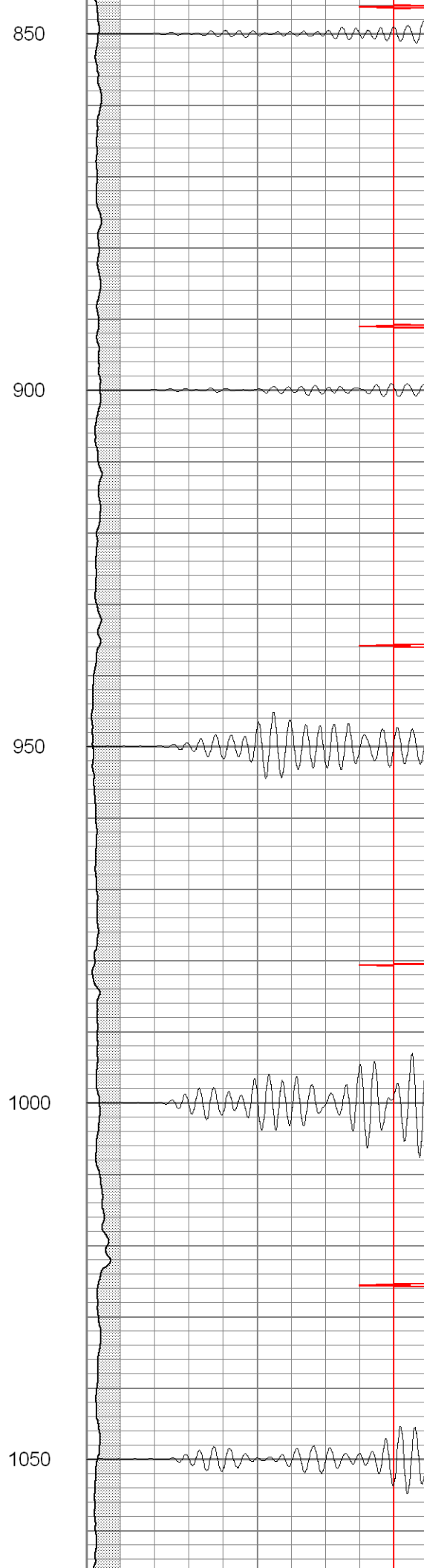
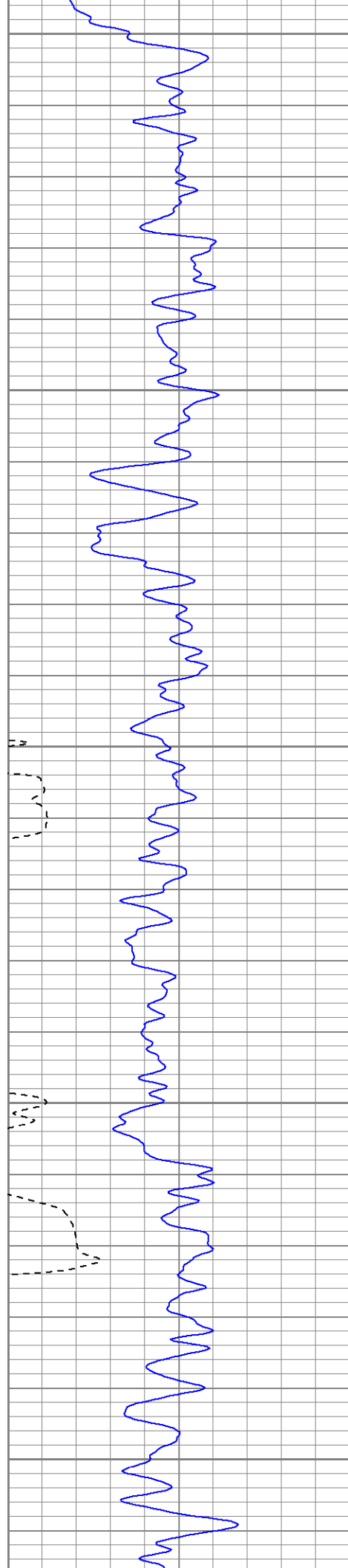
0	GR (GAPI)	200	0	AMP3 (mV)	100	200	Variable Density	1200
400	TT3 (usec)	200	18	CCL	-2			
			200	CBL5	1200			



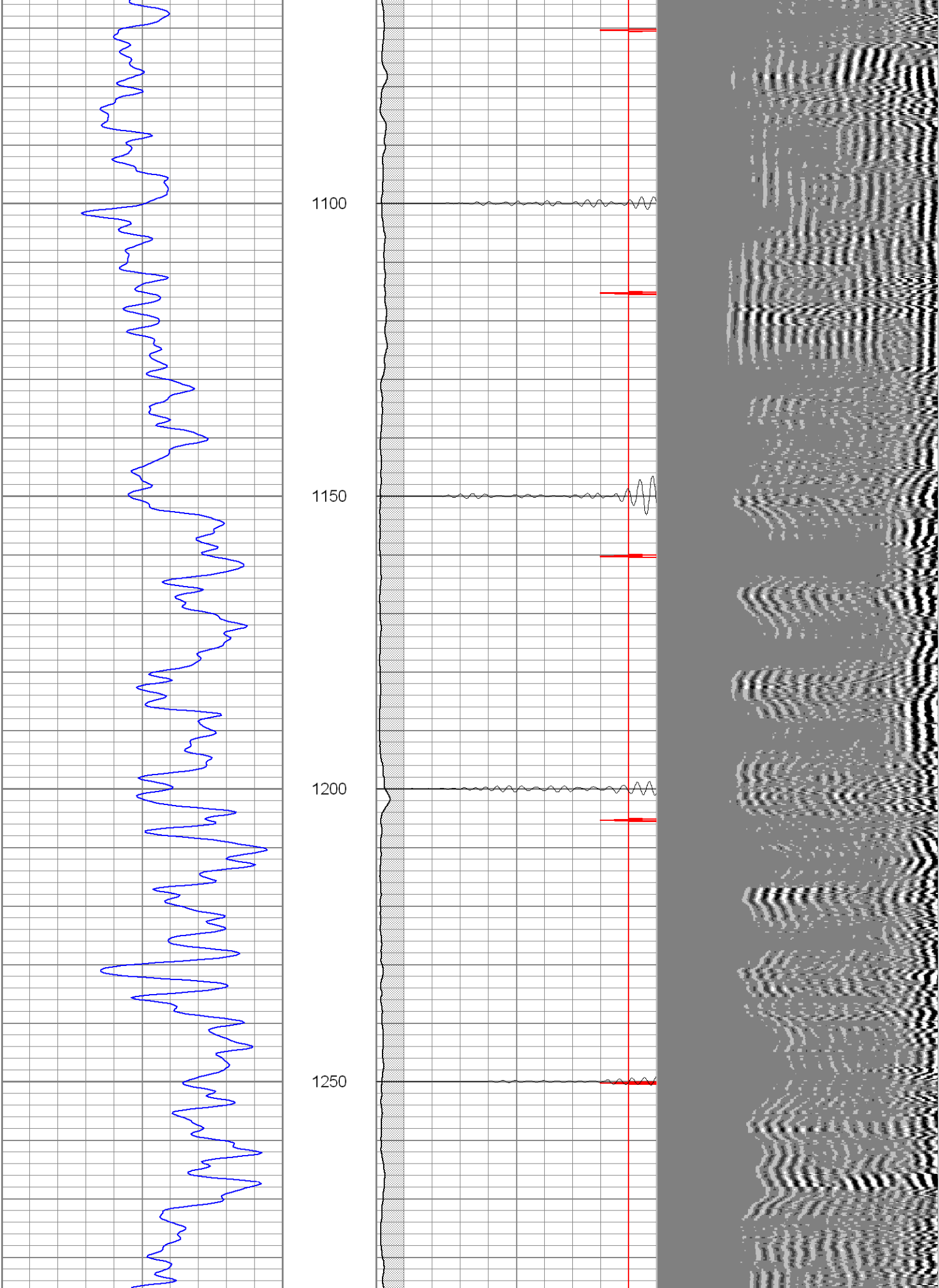


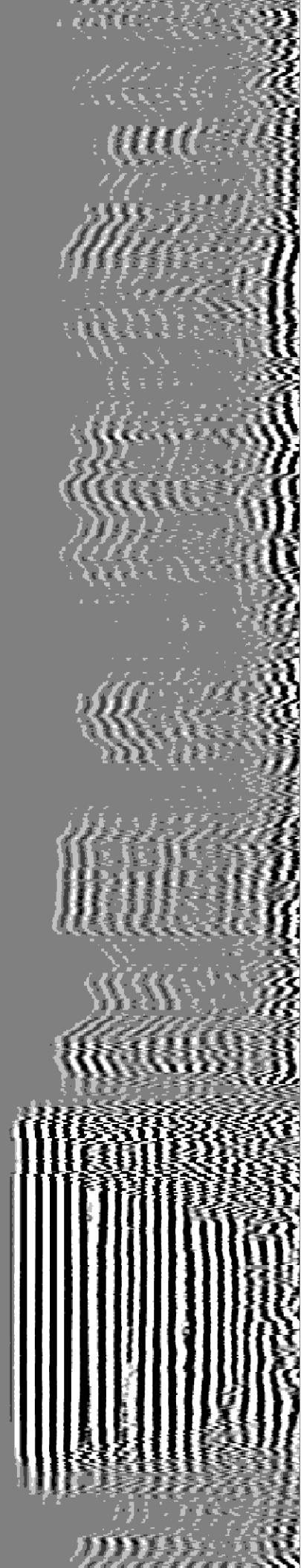
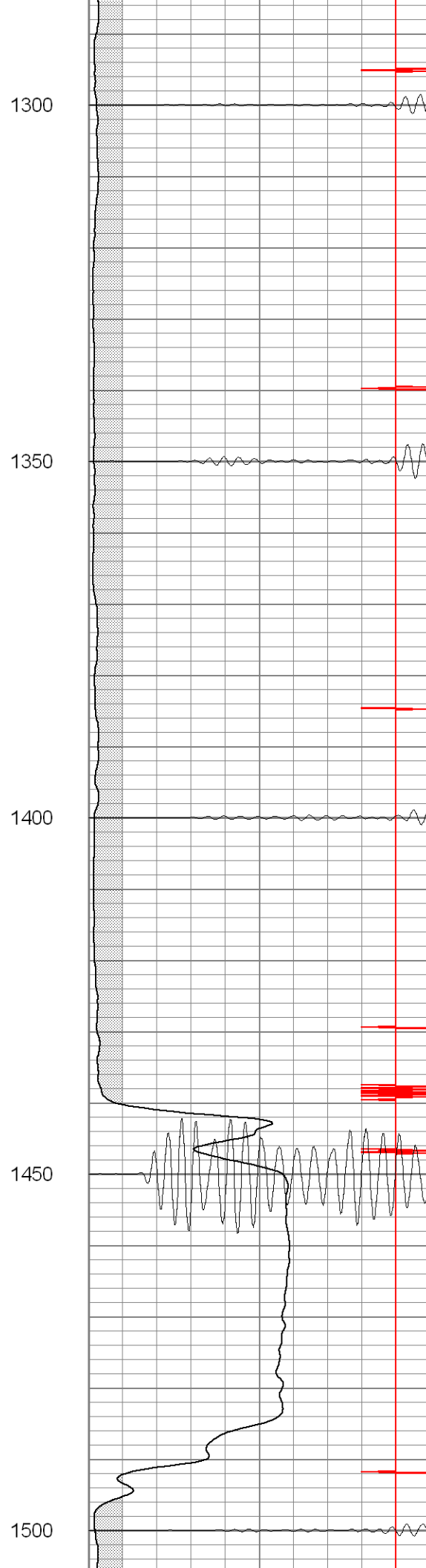
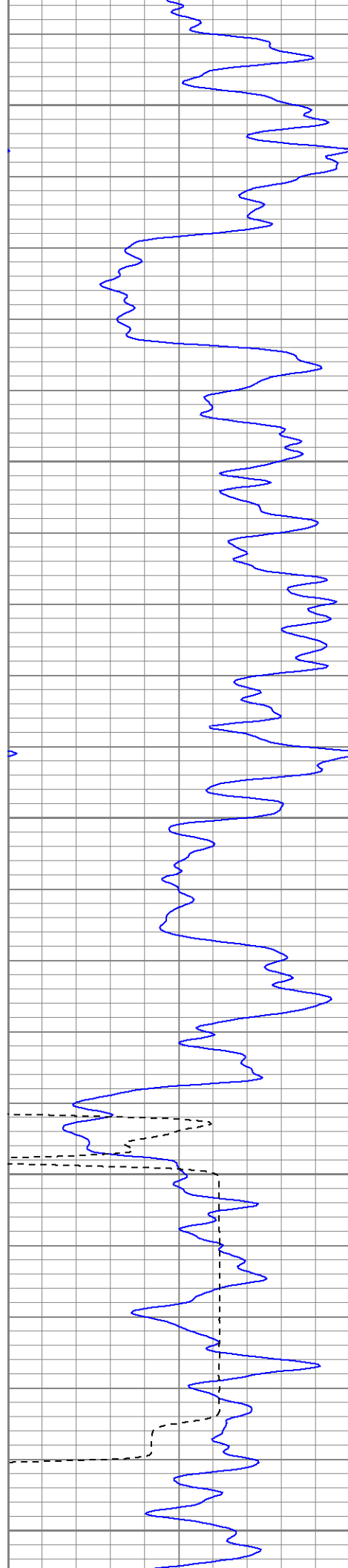




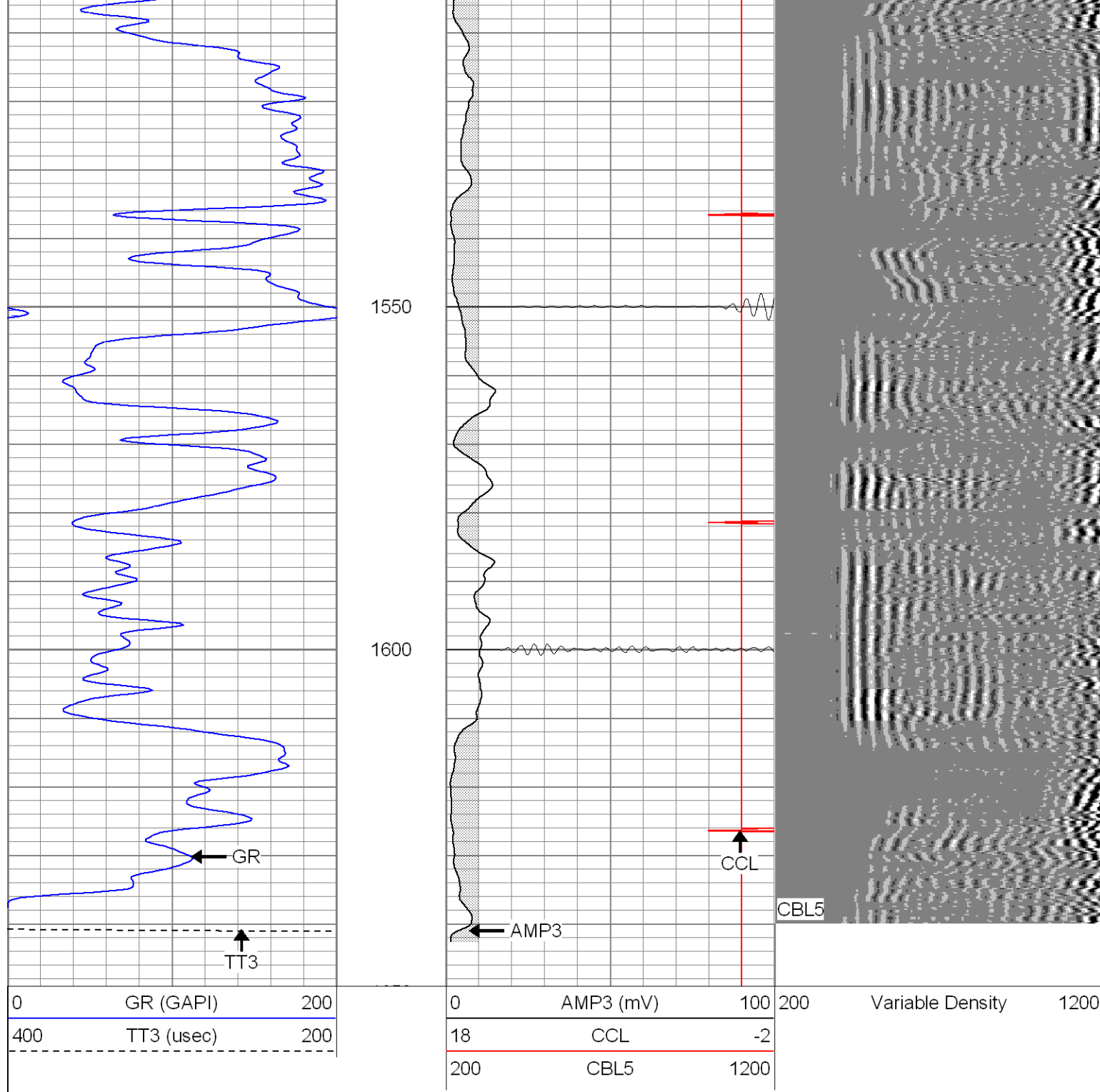










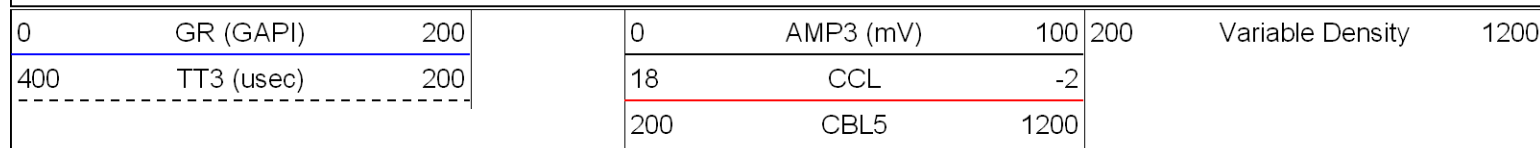


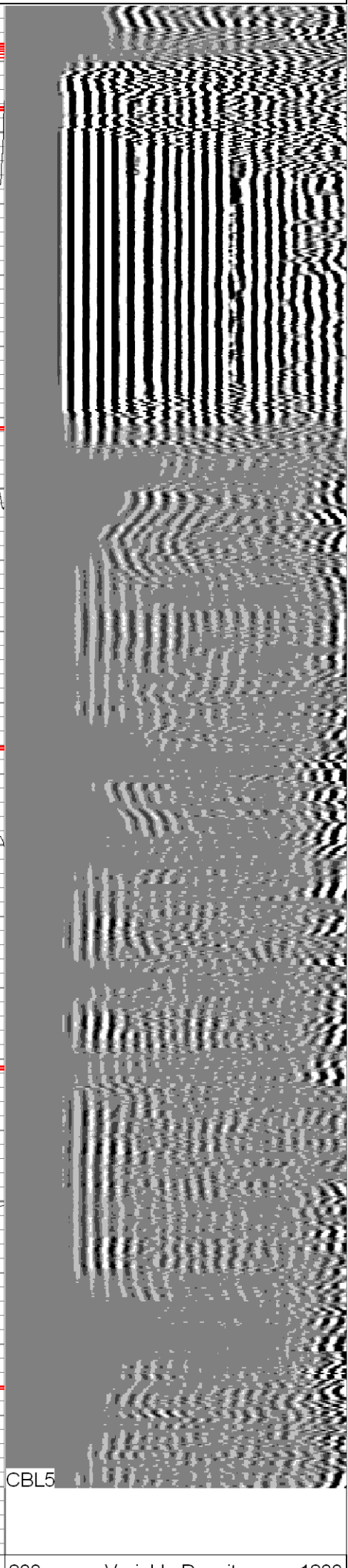
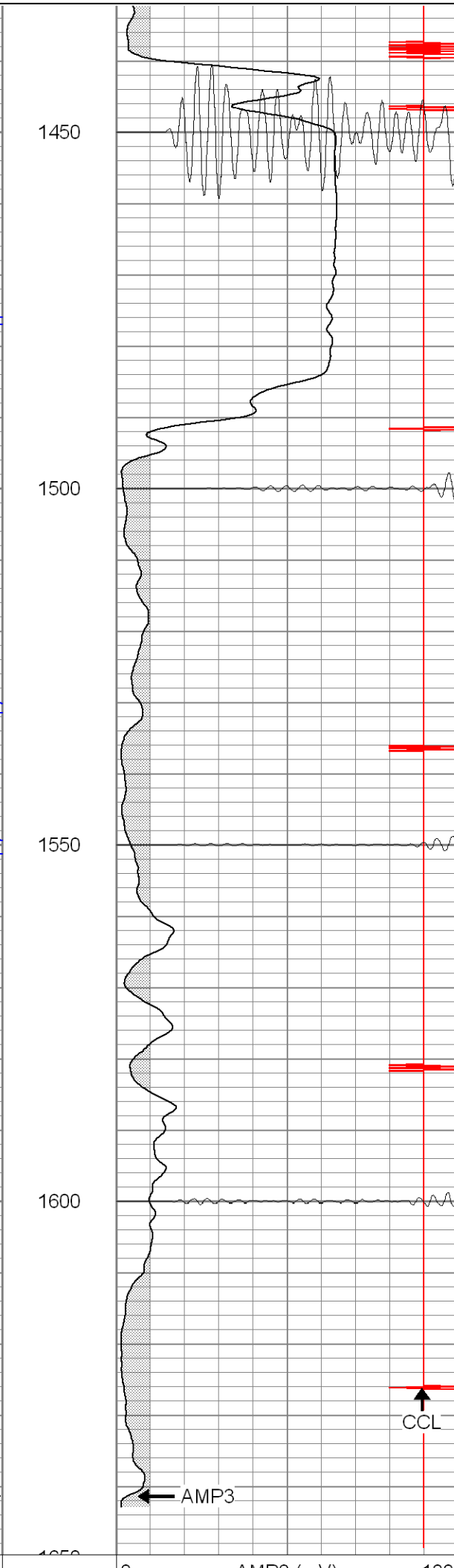
**SUPERIOR**

Black Lick, Pa.  
Mercer, Pa.  
Wooster, Oh.  
Cleveland, Ok.  
Trinidad, Co.

# Repeat Section 0 PSI

Database File: ge21-14b52107.db  
 Dataset Pathname: pass1  
 Presentation Format: cblrt  
 Dataset Creation: Mon May 21 07:29:06 2007 by Log Warrior 7.0 STD Cas  
 Charted by: Depth in Feet scaled 1:240





0	GR (GAPI)	200	0	AMP3 (mV)	100	200	Variable Density	1200
400	TT3 (usec)	200	18	CCL	-2			
			200	CBL5	1200			

Cement Bond Log Calibration Report				
Serial Number:	Titan2			
Tool Model:	2			
Performed:	Fri May 18 13:25:06 2007			
Depth:	3855.89	ft		
Casing Diameter:	5.5	in		
	3' Spacing		5' Spacing	
Signal Zero:	1		1	mV
Calibrated Amplitude:	85		71.921	mV
Reading at Signal Zero:	-0.01		-0.00683594	V
Reading in Free Pipe:	1.8		1.4	V
Gain:	46.4088		50.4117	
Offset:	1.46409		1.34461	
Gamma Ray Calibration Report				
Serial Number:	TITAN2			
Tool Model:	T2			
Performed:	Fri May 11 14:49:08 2007			
Calibrator Value:	200.0	GAPI		
Background Reading:	54.0	cps		
Calibrator Reading:	219.0	cps		
Sensitivity:	1.2500	GAPI/cps		