



SUPERIOR
Black Lick, Pa.
Mercer, Pa.
Wooster, Oh.
Cleveland, Ok.
Trinidad, Co.

DUAL INDUCTION LOG

Company XTO Energy Inc.
Well Hill Ranch 36-10-67
Field Purgatoire River
County Las Animas State Colorado

Location: API # : 05 071 09533 00

2113' FSL & 1547' FEL

SEC 36 TWP 34S RGE 67W

Other Services
CDL
NEUTRON

Permanent Datum Ground Level Elevation 7826'
Log Measured From Ground Level
Drilling Measured From Ground Level

Elevation
K.B. -----
D.F. -----
G.L. 7826'

Date	4-28-08		
Run Number	One		
Depth Driller	2430'		
Depth Logger	2420'		
Bottom Logged Interval	2418'		
Top Log Interval	Surface Casing		
Casing Driller	8 5/8" @ 468'		
Casing Logger	468'		
Bit Size	7 7/8"		
Type Fluid in Hole	Water		
Density / Viscosity	///		
pH / Fluid Loss	///		
Source of Sample	///		
Rm @ Meas. Temp	///		
Rmf @ Meas. Temp	///		
Rmc @ Meas. Temp	///		
Source of Rmf / Rmc	///		
Rm @ BHT	///		
Time Circulation Stopped	12:00 P.M.		
Time Logger on Bottom	1:20 P.M.		
Maximum Recorded Temperature	118 DEG F		
Equipment Number	T697		
Location	Trinidad		
Recorded By	J. Cappellucci		
Witnessed By	Mr. Don Johnson		

<<< Fold Here >>>

All interpretations are opinions based on inferences from electrical or other measurements and we cannot and do not guarantee the accuracy or correctness of any interpretation, and we shall not, except in the case of gross or willful negligence on our part, be liable or responsible for any loss, costs, damages, or expenses incurred or sustained by anyone resulting from any interpretation made by any of our officers, agents or employees. These interpretations are also subject to our general terms and conditions set out in our current Price Schedule.

Comments

Well Directions:
Lorencito to XTO hill, follow all the way to top, cross cattleguard,
take first left to location.



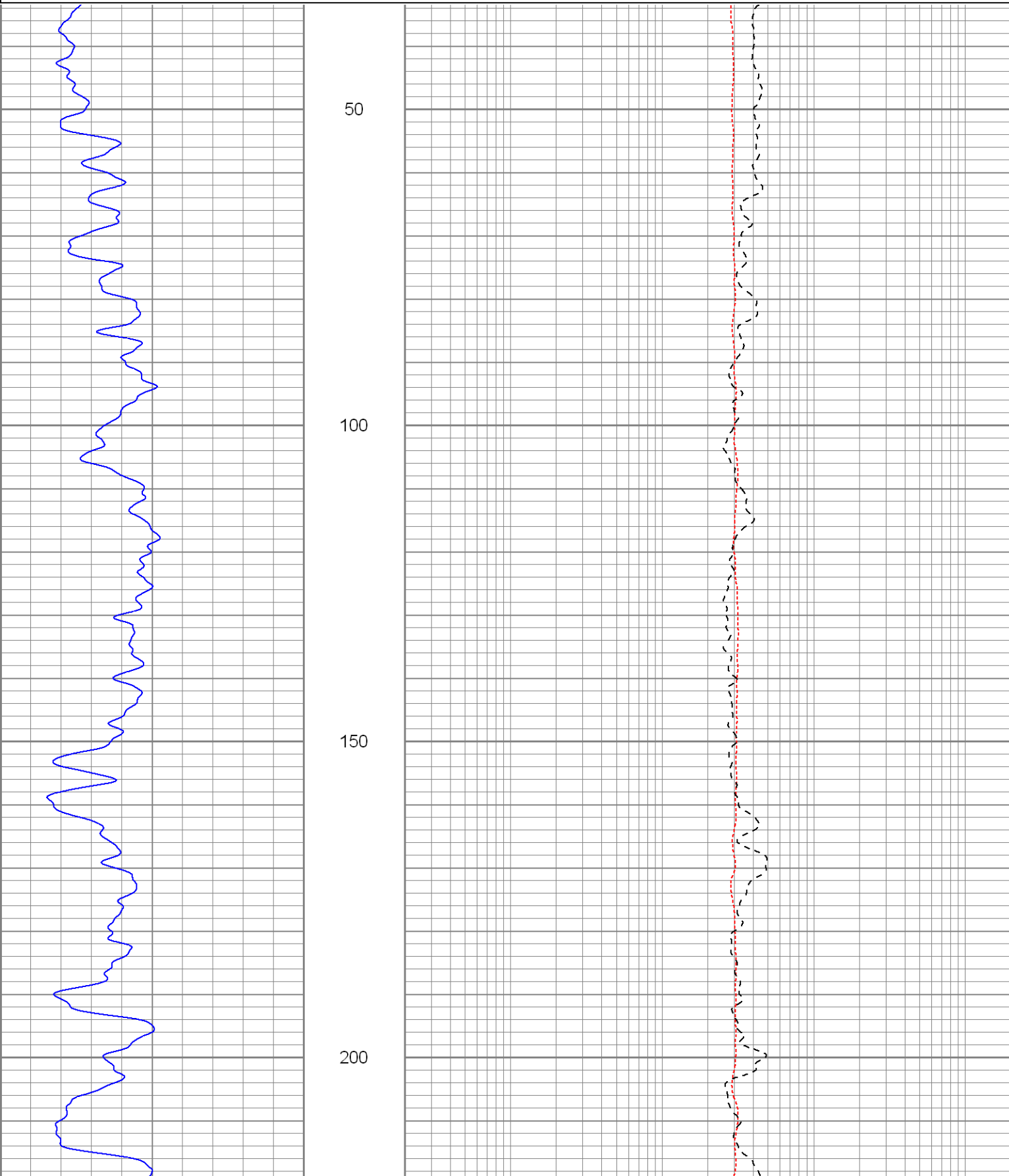
SUPERIOR
Black Lick, Pa.
Mercer, Pa.
Wooster, Oh.
Cleveland, Ok.
Trinidad, Co.

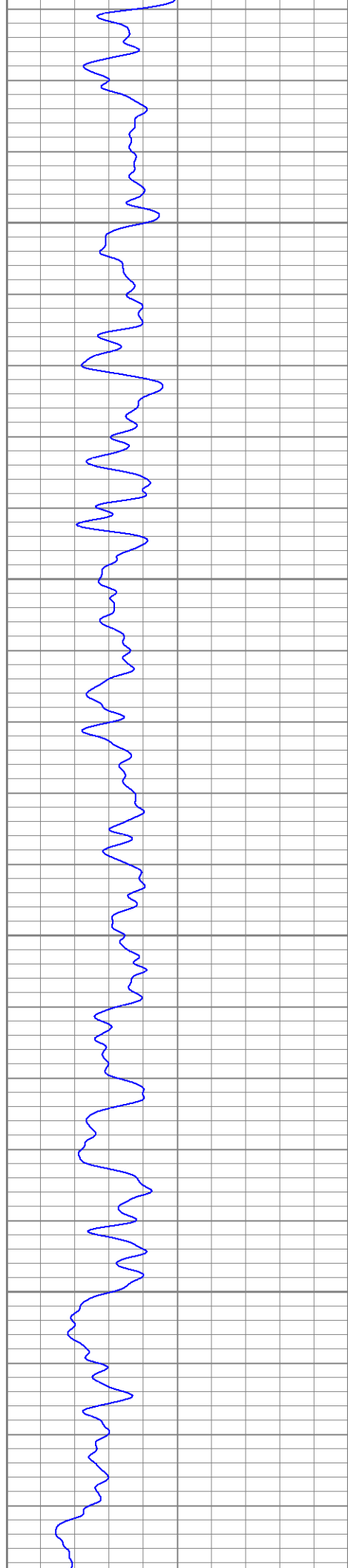
Main Pass

Database File: xtohr361067.db
Dataset Pathname: pass3.1
Presentation Format: dil
Dataset Creation: Mon Apr 28 15:48:21 2008 by Calc Open-Cased 070814
Charted by: Depth in Feet scaled 1:240

0	GR (GAPI)	200
-200	SP (mV)	0

0.2	RILM (Ohm-m)	2000
0.2	RILD (Ohm-m)	2000
0.2	RLL3 (Ohm-m)	2000



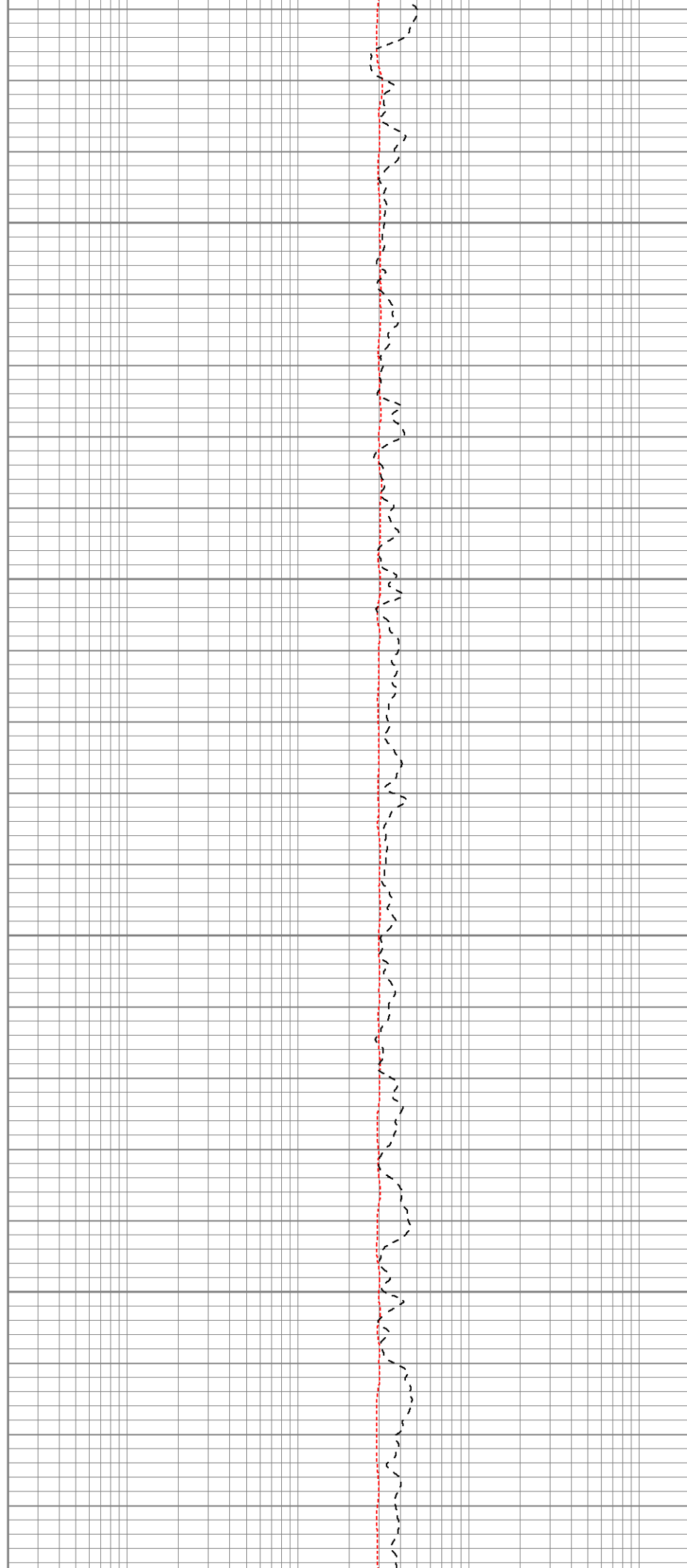


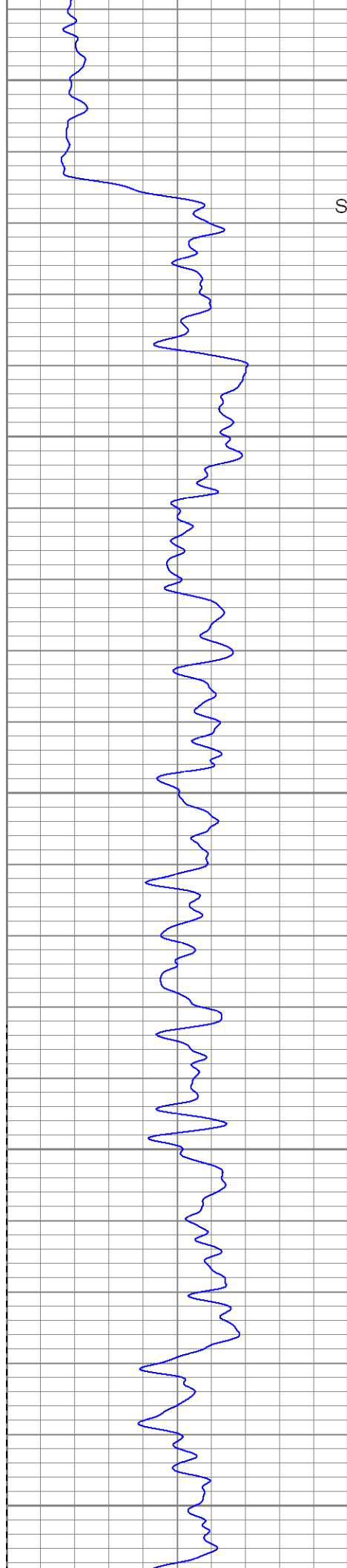
250

300

350

400





450

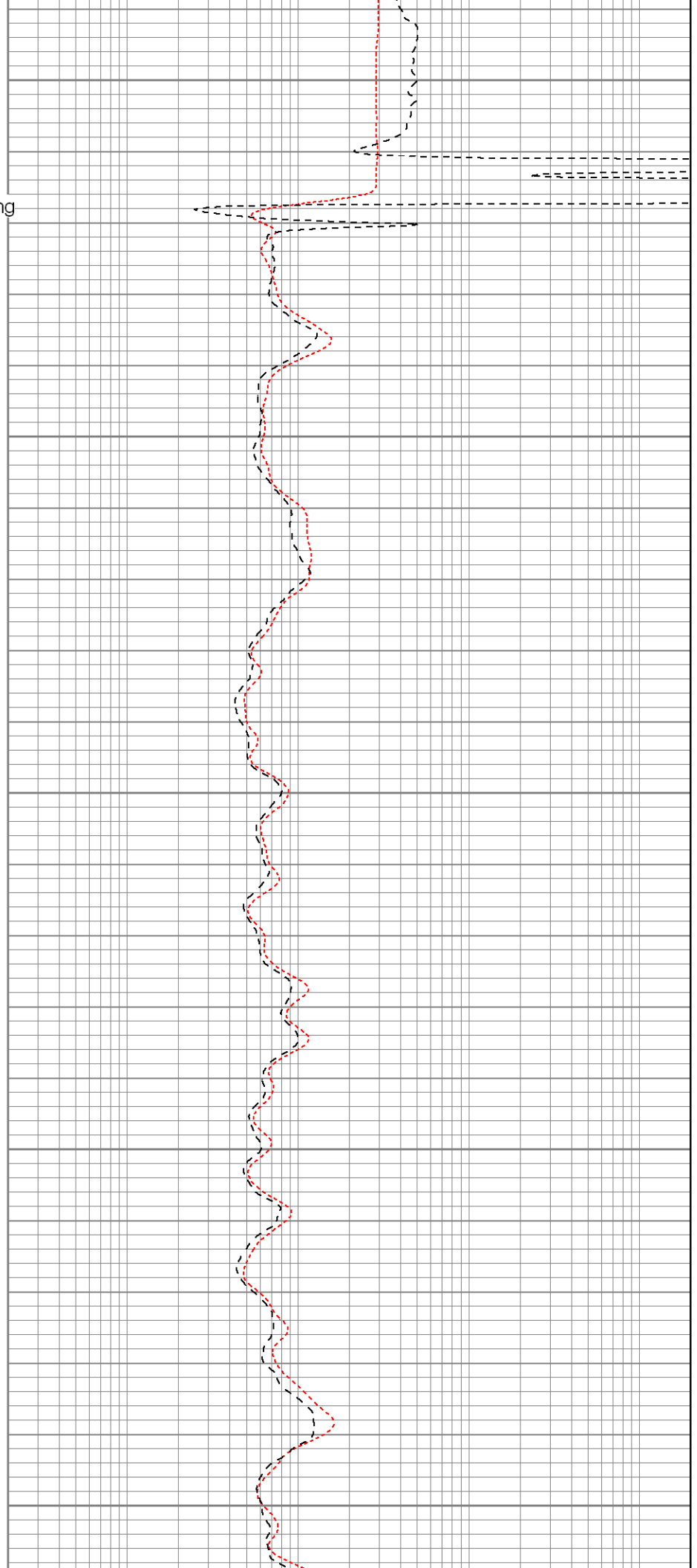
Surface Casing

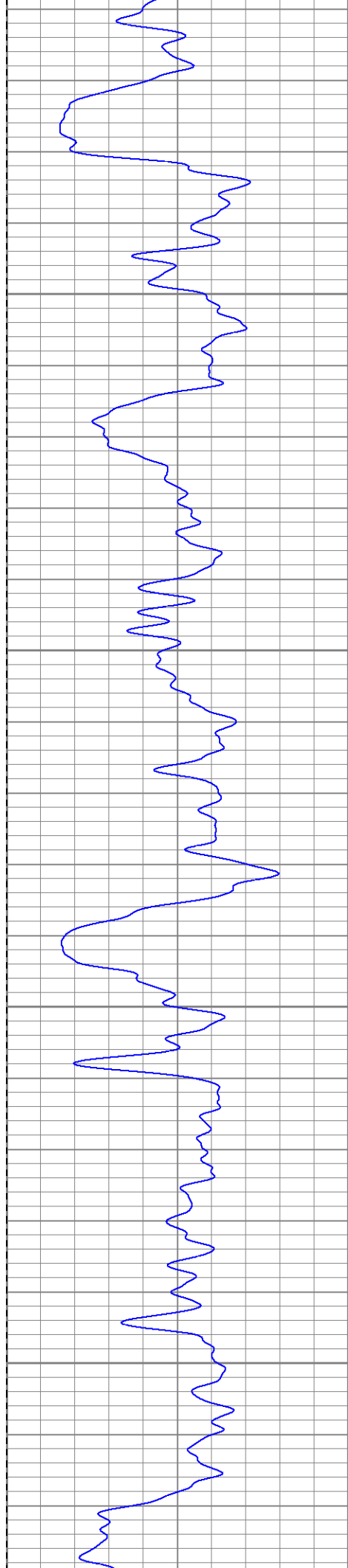
500

550

600

650



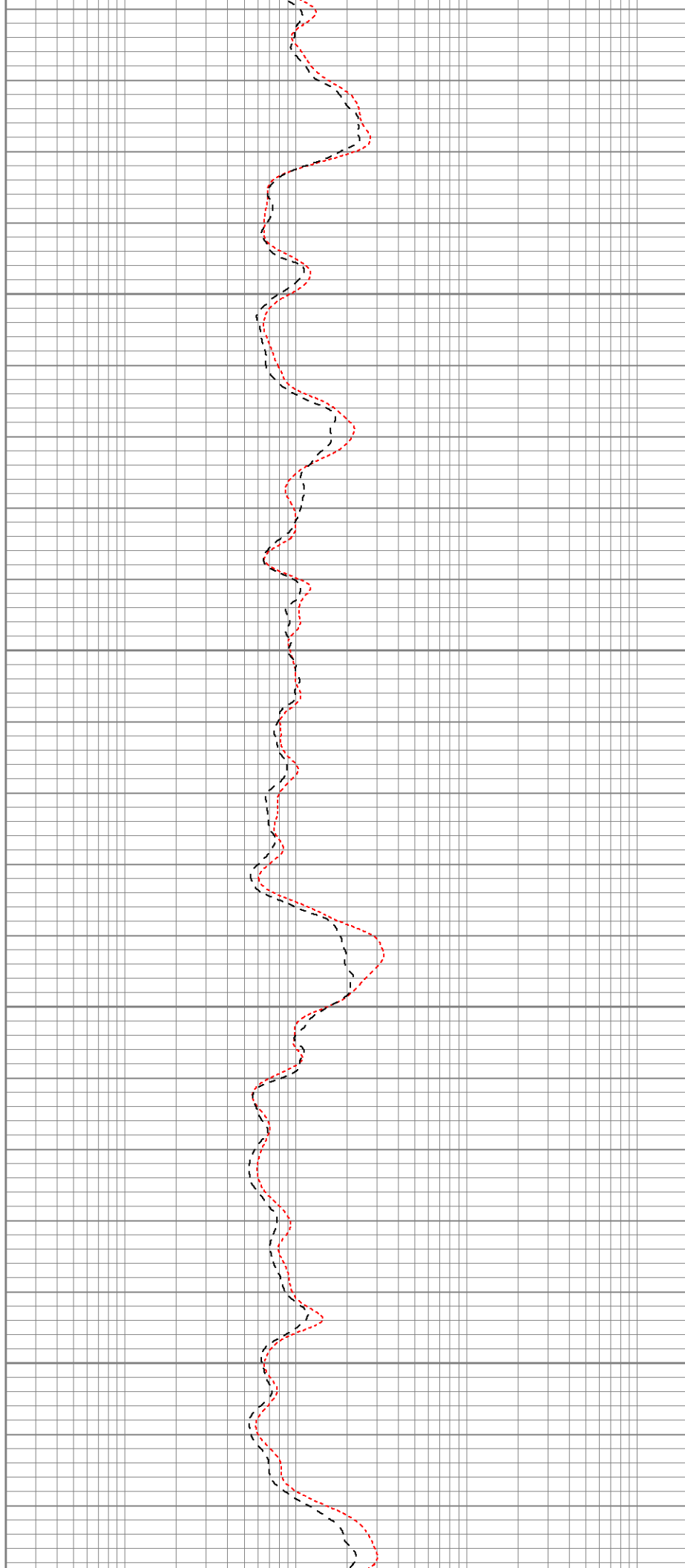


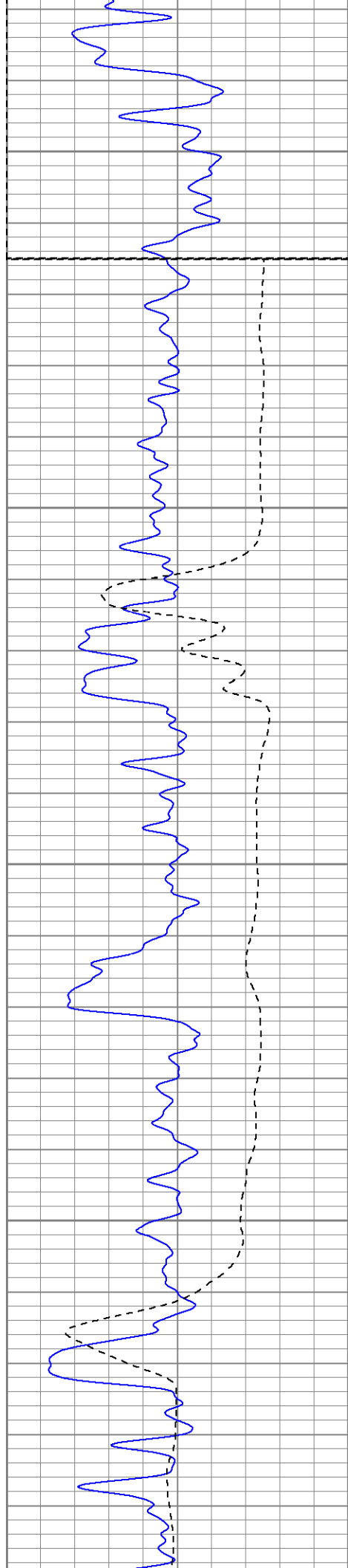
700

750

800

850





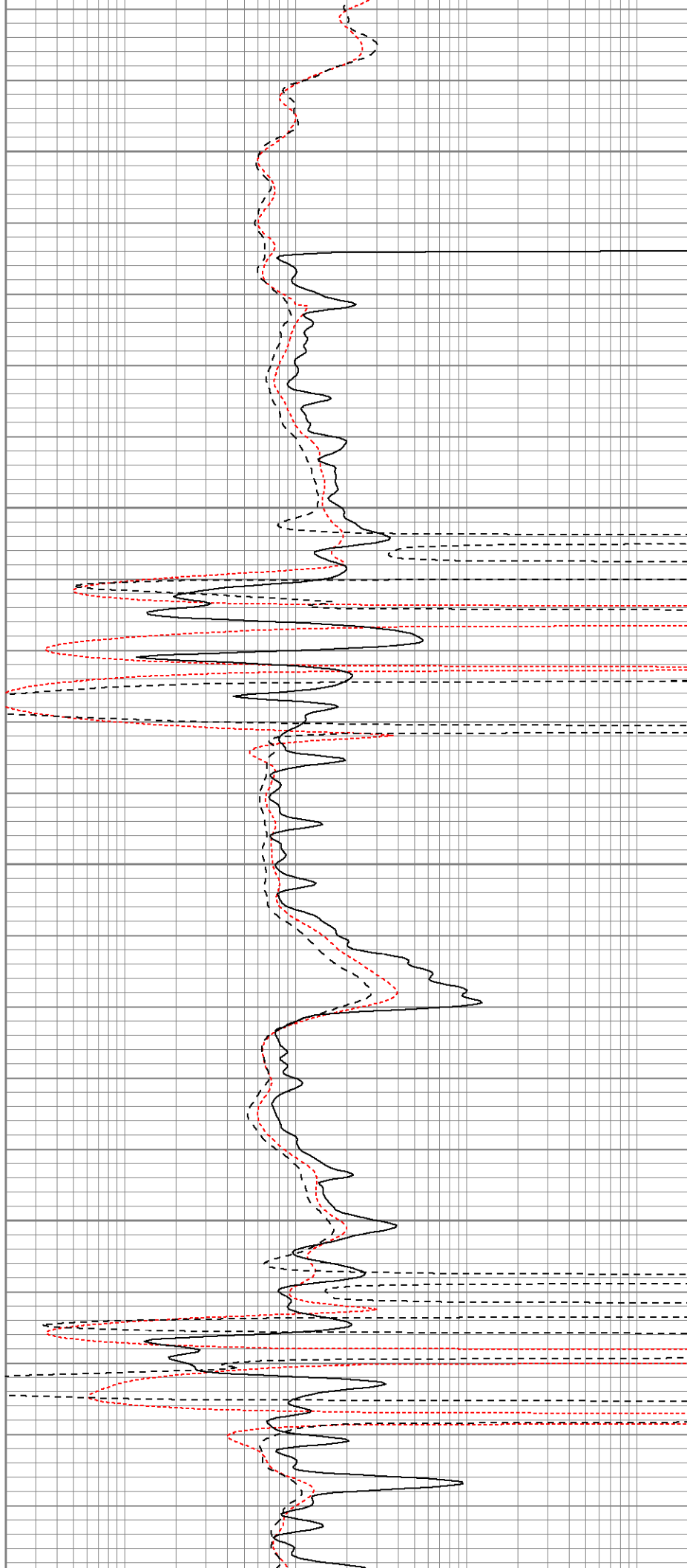
900

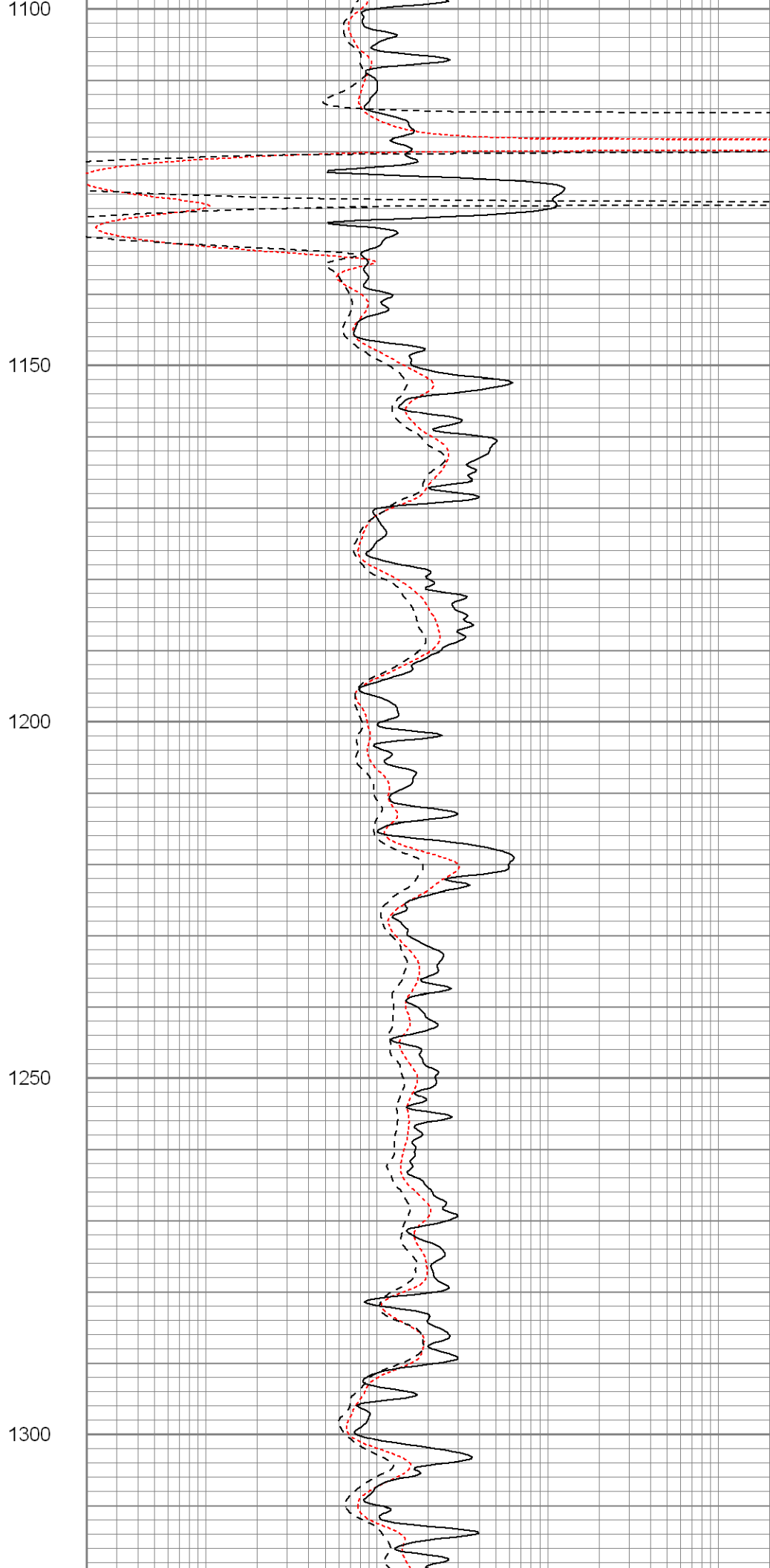
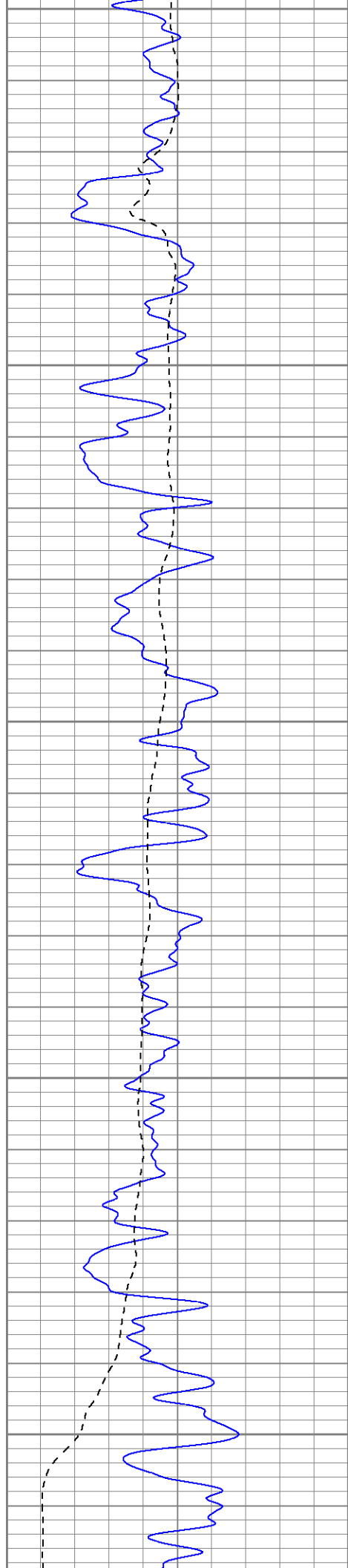
Fluid Level

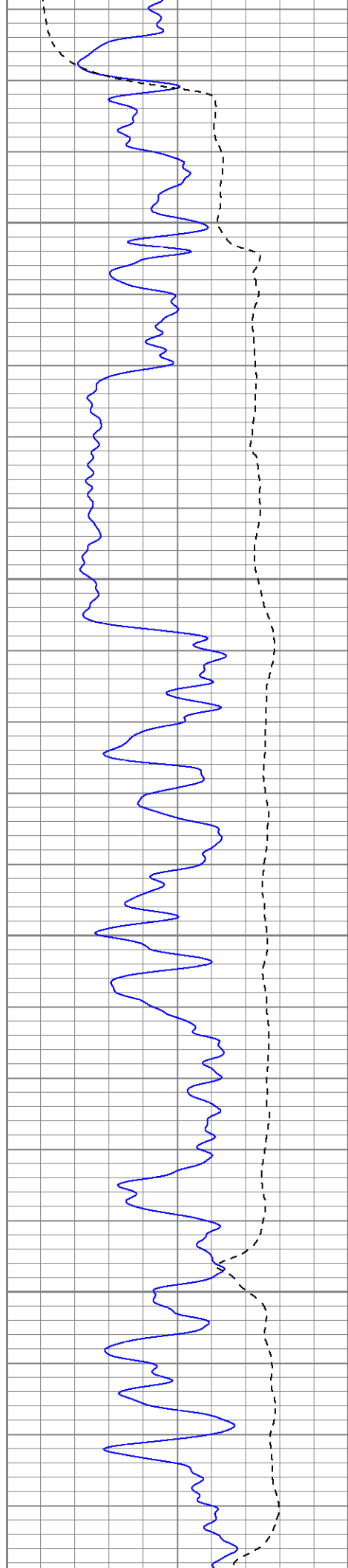
950

1000

1050





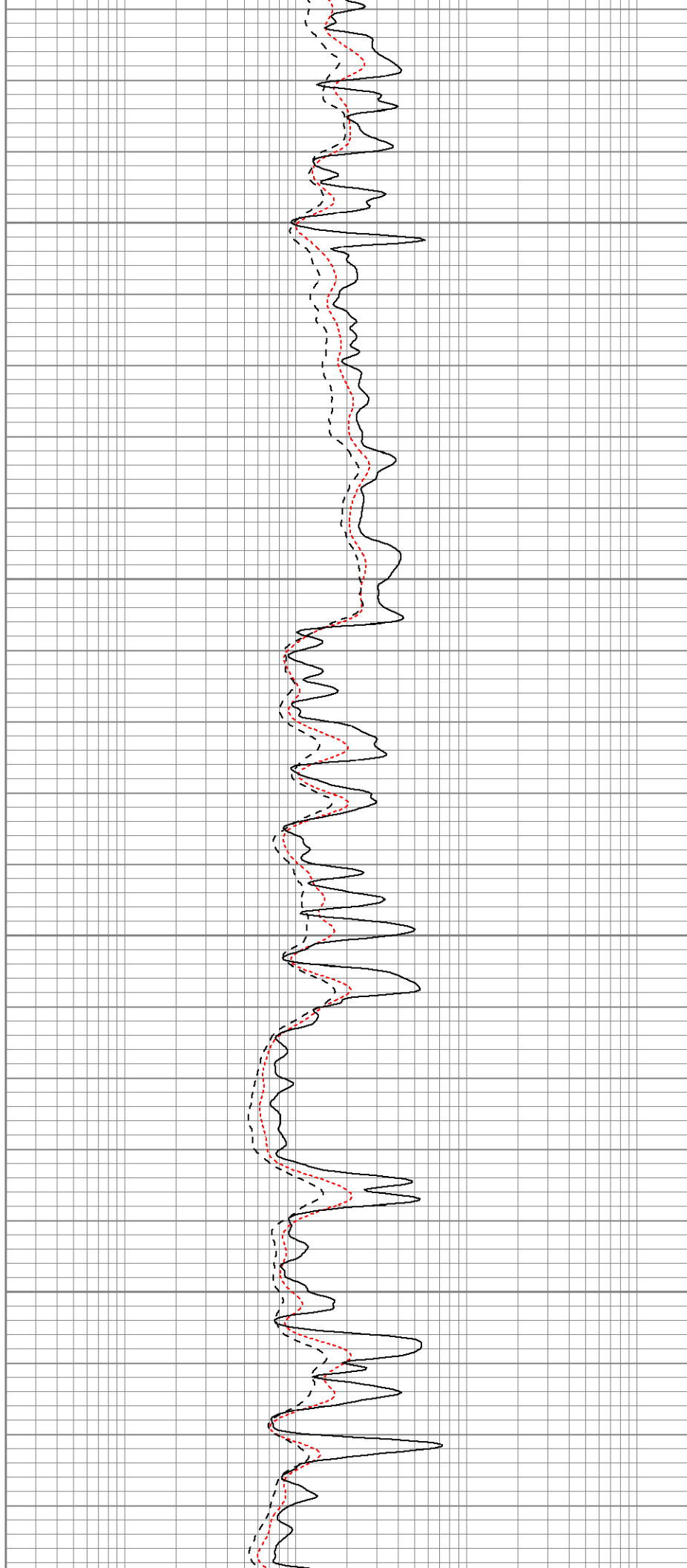


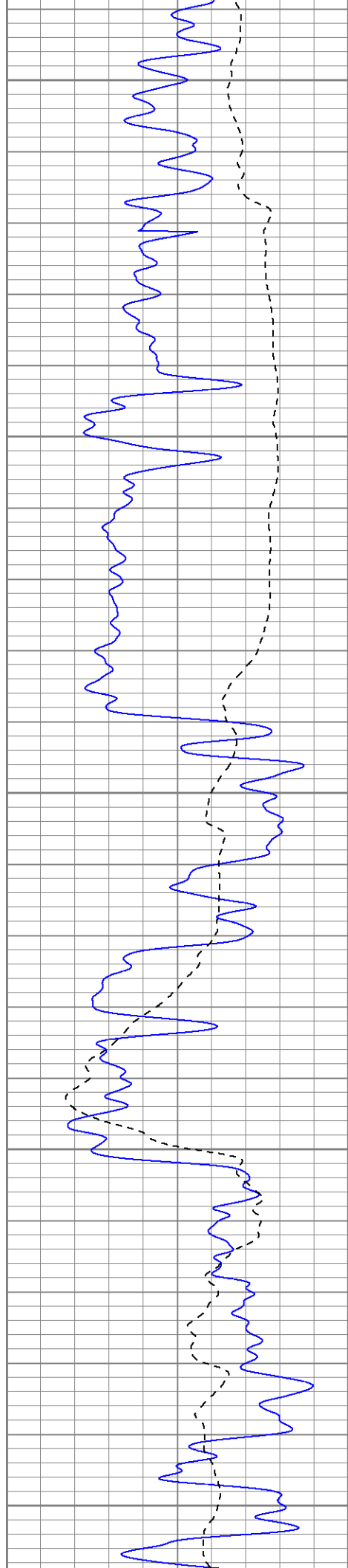
1350

1400

1450

1500





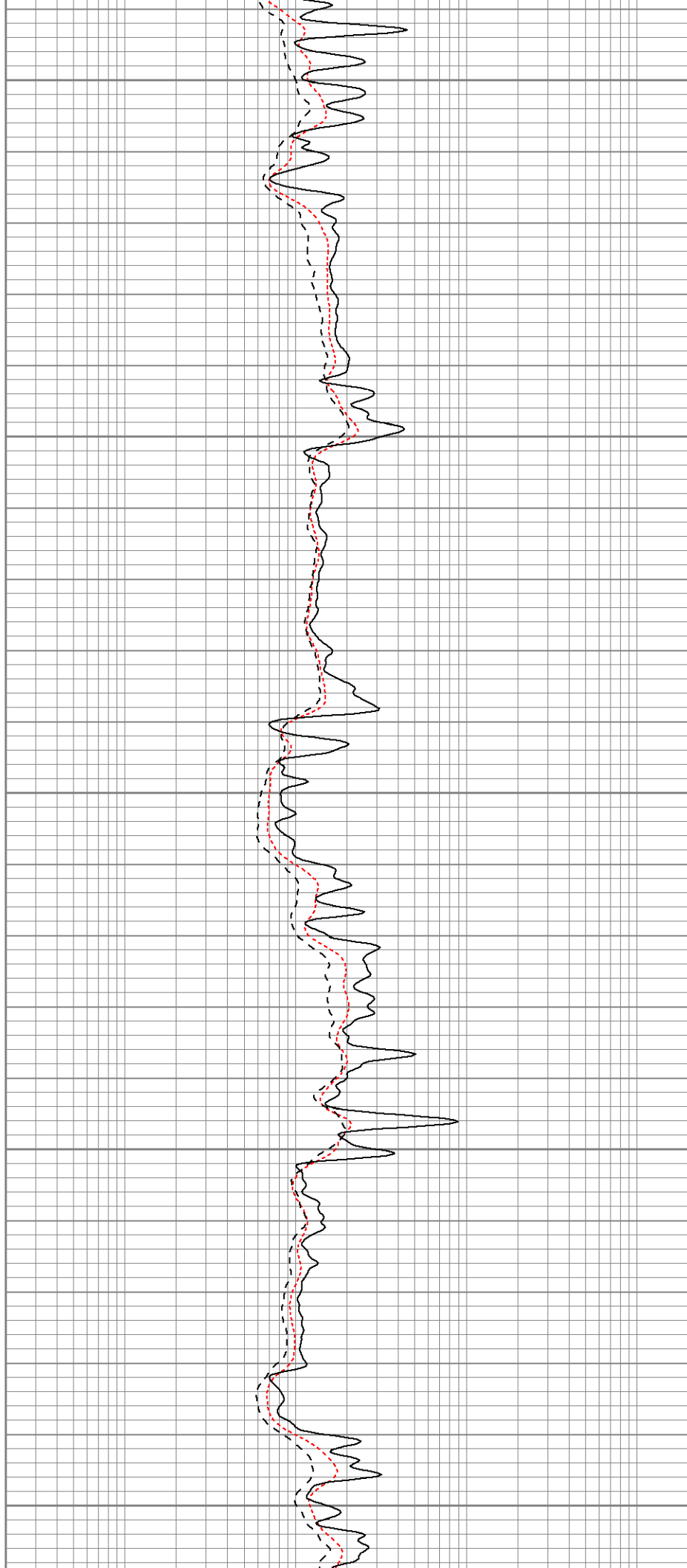
1550

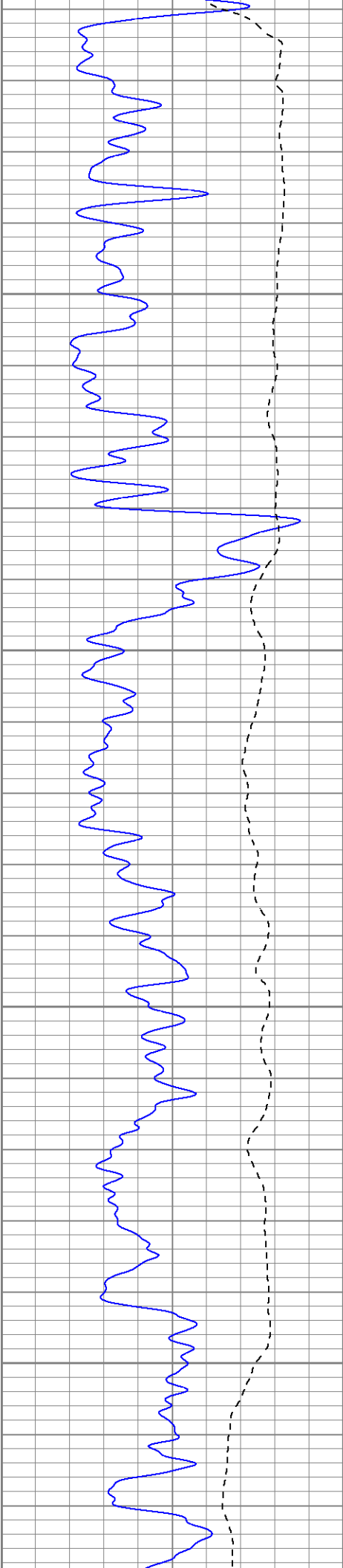
1600

1650

1700

1750



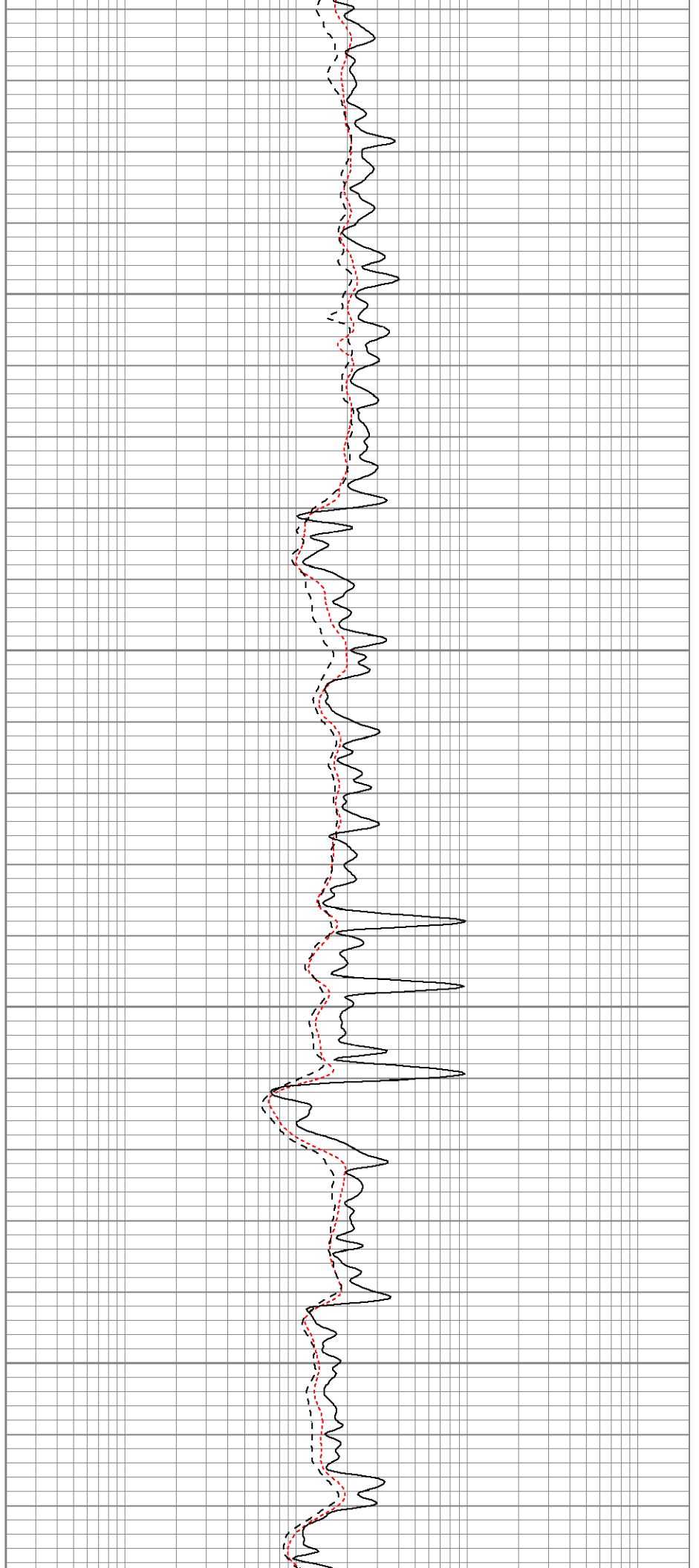


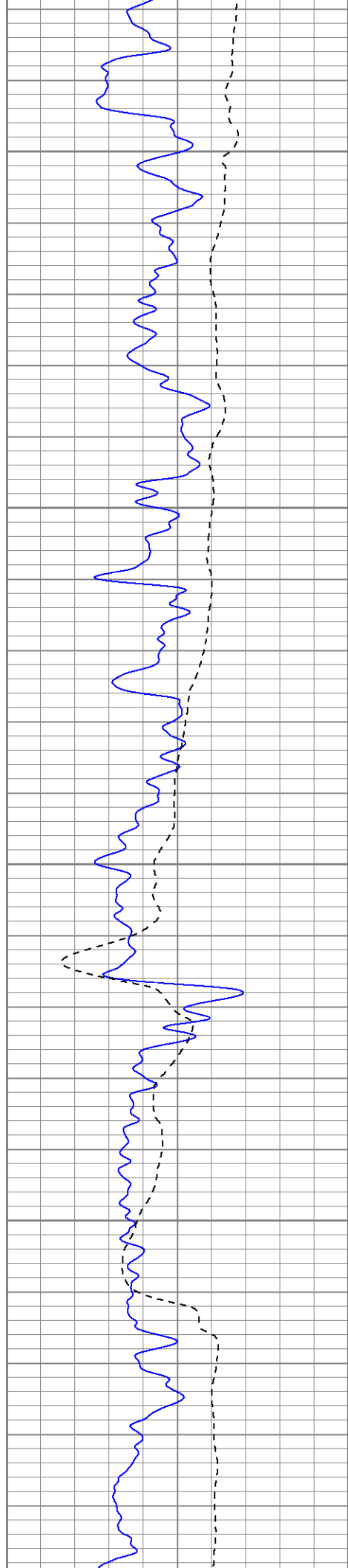
1800

1850

1900

1950



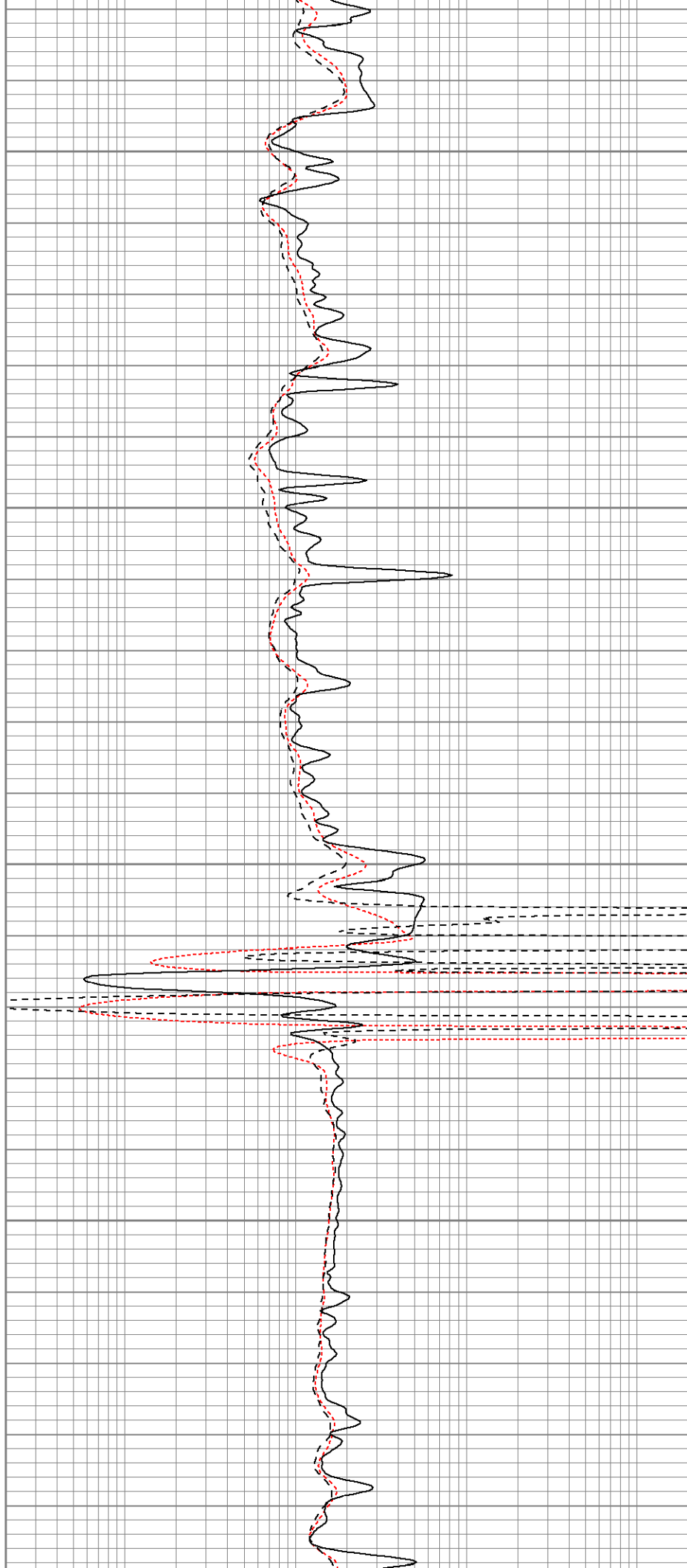


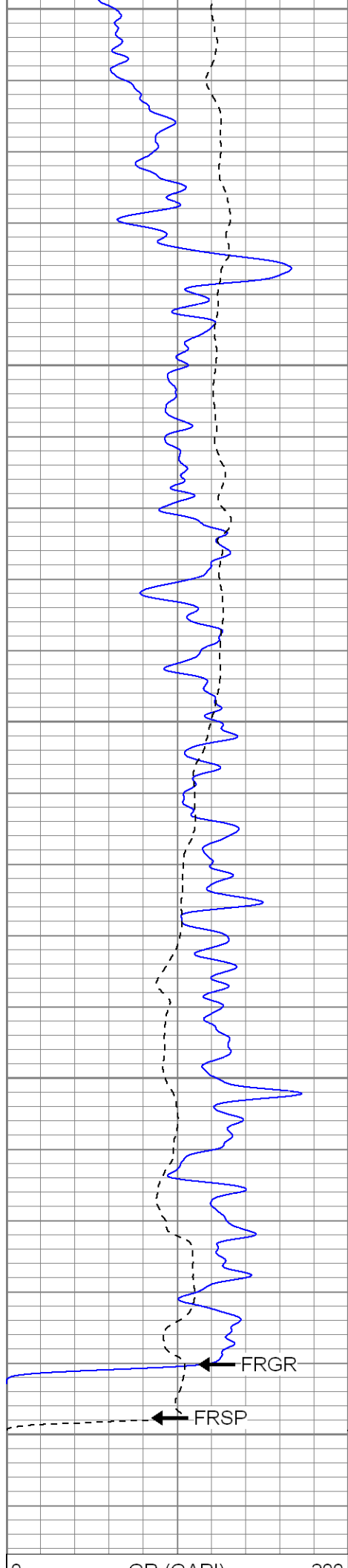
2000

2050

2100

2150





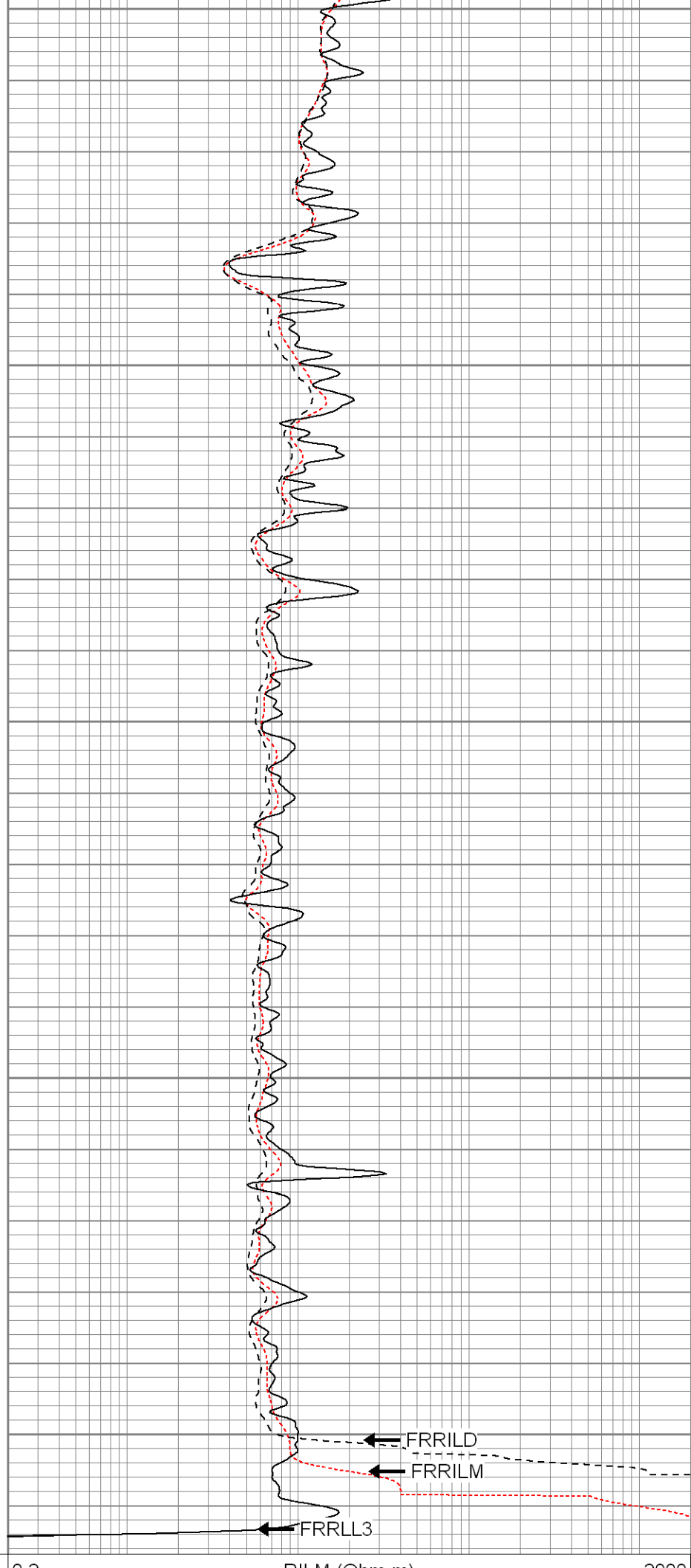
2200

2250

2300

2350

2400



0	GR (GAPI)	200
-200	SP (mV)	0
<hr/>		

0.2	RILM (Ohm-m)	2000
0.2	RILD (Ohm-m)	2000
0.2	RLL3 (Ohm-m)	2000
<hr/>		



SUPERIOR

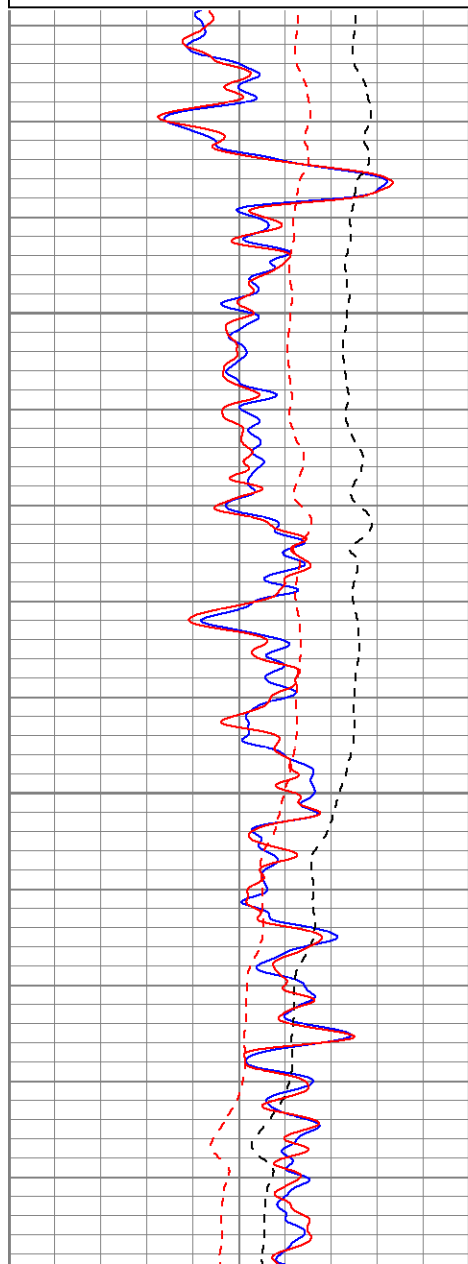
Black Lick, Pa.
Mercer, Pa.
Wooster, Oh.
Cleveland, Ok.
Trinidad, Co.

Repeat Pass

Database File: xtohr361067.db
Dataset Pathname: pass2.1
Presentation Format: dil
Dataset Creation: Mon Apr 28 15:58:30 2008 by Calc Open-Cased 070814
Charted by: Depth in Feet scaled 1:240

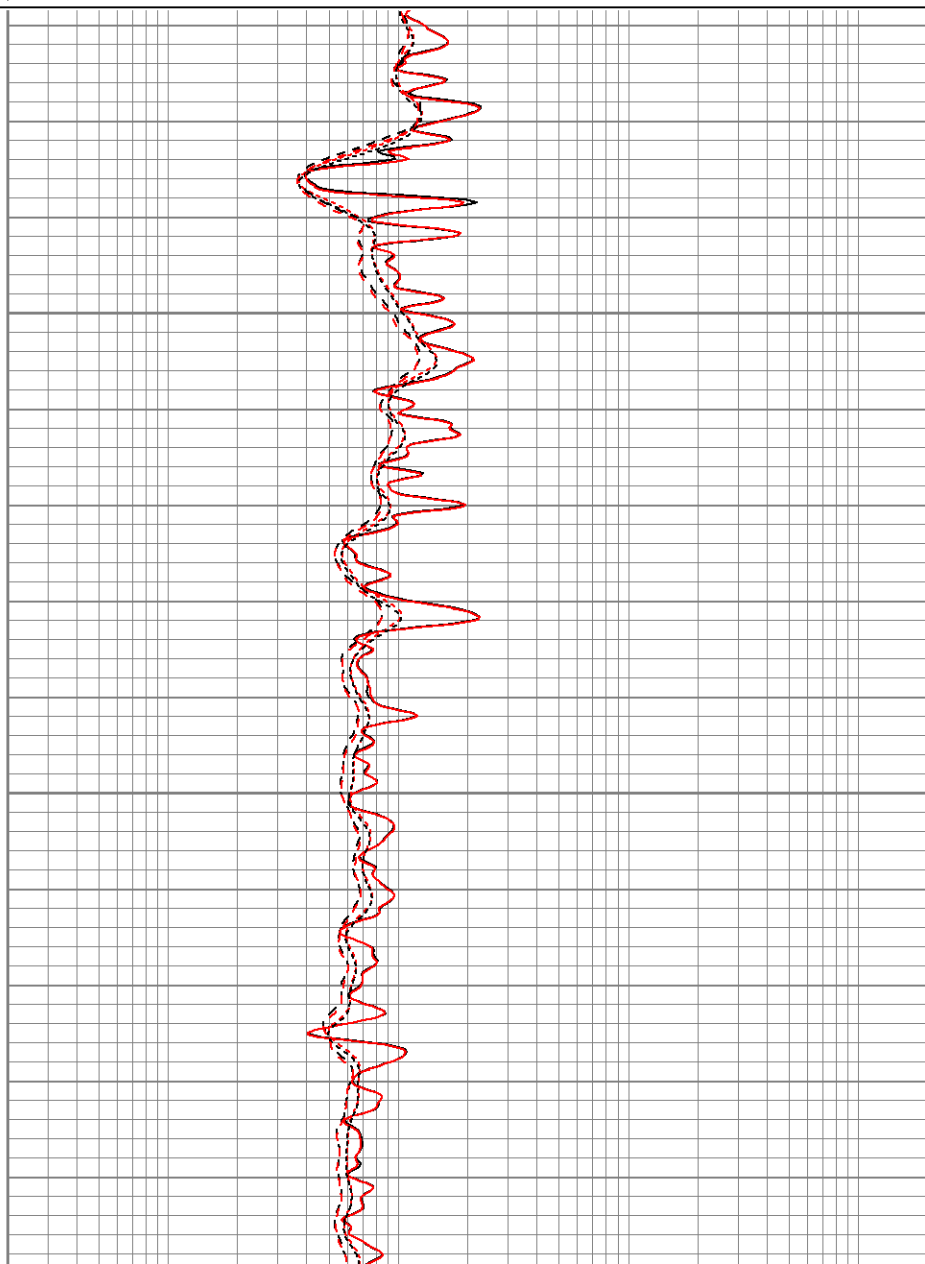
0	GR (GAPI)	200
-200	SP (mV)	0
<hr/>		
0	GR-repeat (GAPI)	200
-200	SP-repeat (mV)	0
<hr/>		

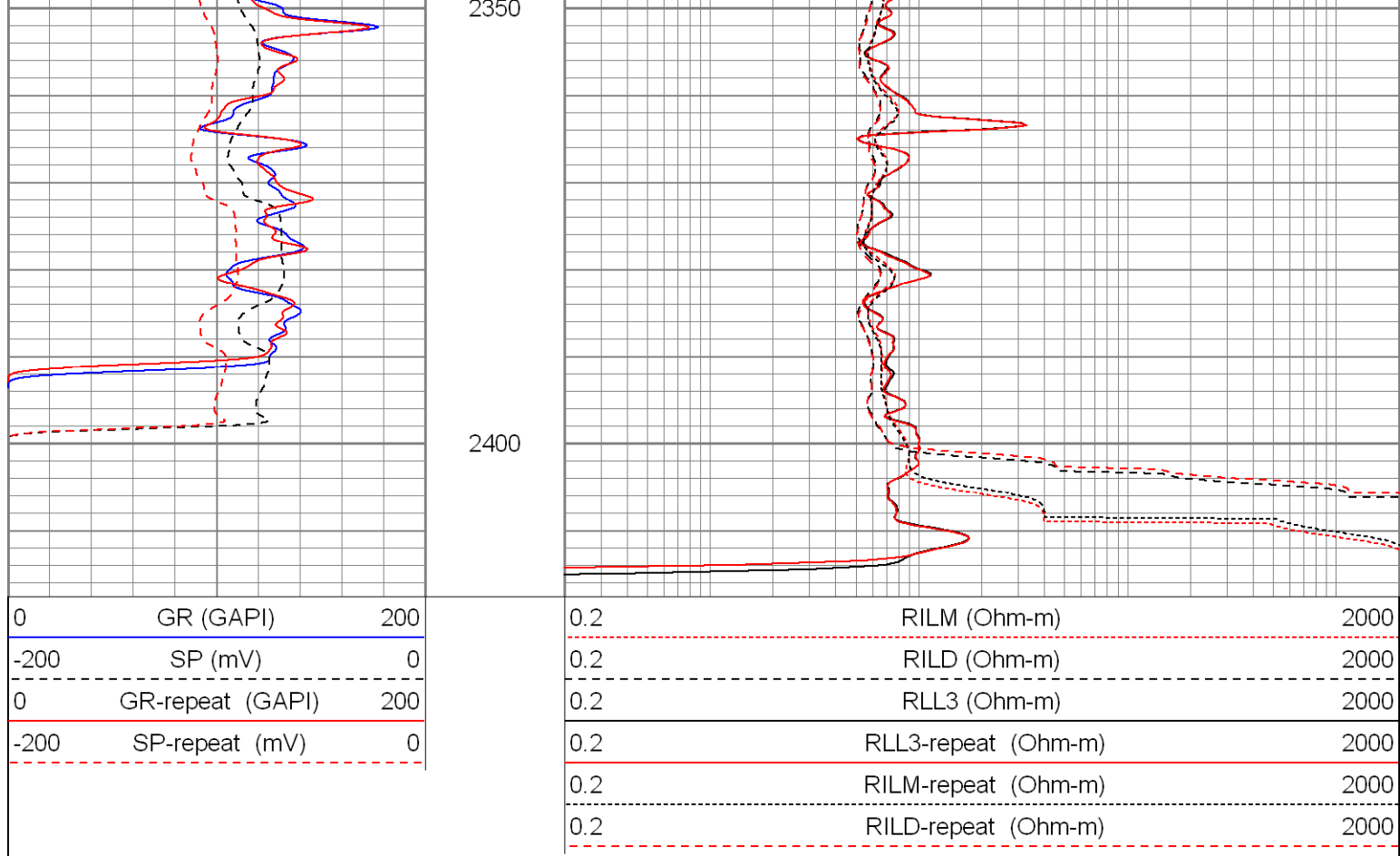
0.2	RILM (Ohm-m)	2000
0.2	RILD (Ohm-m)	2000
0.2	RLL3 (Ohm-m)	2000
0.2	RLL3-repeat (Ohm-m)	2000
0.2	RILM-repeat (Ohm-m)	2000
0.2	RILD-repeat (Ohm-m)	2000
<hr/>		



2250

2300





Calibration Report

Database File: xtohr361067.db
 Dataset Pathname: pass3
 Dataset Creation: Mon Apr 28 13:25:06 2008 by Log Open-Cased 070814

Dual Induction Calibration Report

Serial-Model: 20017-P
 Surface Cal Performed: Mon Apr 28 13:11:35 2008
 Downhole Cal Performed: Mon Apr 28 13:12:09 2008

Surface Calibration

Readings				References			Results	
Loop:	Air	Loop		Air	Loop		m	b
Deep	0.013	0.673	V	0.000	500.000	mmho-m	758.245	-10.209
Medium	-0.009	0.777	V	0.000	550.000	mmho-m	699.139	6.426
Internal:	Zero	Cal		Zero	Cal		m	b
Deep	0.014	0.674	V	0.000	500.000	mmho-m	758.497	-10.898
Medium	-0.010	0.778	V	0.000	500.000	mmho-m	634.960	6.127

Downhole Calibration

Readings				References			Results	
Internal:	Zero	Cal		Zero	Cal		m	b
Deep	0.245	500.171	mmho-m	0.685	500.518	mmho-m	1.000	0.440
Medium	-0.427	550.627	mmho-m	-0.320	550.218	mmho-m	0.999	0.106
Shallow	0.047	5.403	V	10.000	1000.000	Ohm-m	124.000	2.000

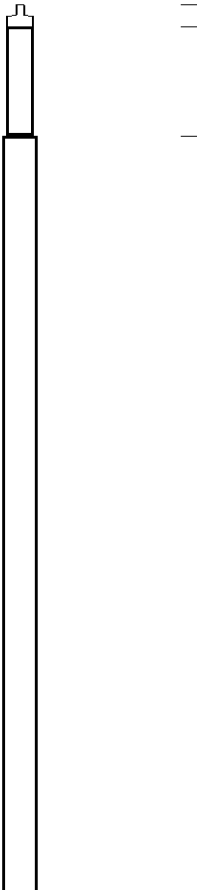



Gamma Ray Calibration Report

Serial Number: 2001
Tool Model: OH
Performed: Fri Apr 04 09:53:13 2008

Calibrator Value:	1.0	GAPI
-------------------	-----	------

Background Reading:	0.0	cps
Calibrator Reading:	1.0	cps

Sensitivity: 0.2500 GAPI/cps

Sensor	Offset (ft)	Schematic	Description	Len (ft)	OD (in)	Wt (lb)
GR	25.80		None	0.75	1.50	5.00
			GR-OH (2001) 2001	3.56	3.25	40.00
CILD SP	16.29 16.29					
CILM	12.54		DIL-P (20017) Pengo	24.63	4.00	300.00
RLL3	3.21					
Dataset: xtohr361067.db: field/well/run1/pass3 Total Length: 28.94 ft Total Weight: 345.00 lb O.D. 4.00 in						