



SUPERIOR
Black Lick, Pa.
Mercer, Pa.
Wooster, Oh.
Cleveland, Ok.
Trinidad, Co.

CEMENT BOND GAMMA RAY LOG

Company El Paso E&P Company, L.P.
Well VPR "C" -139
Field Purgatoire River
County Las Animas
State CO

Company El Paso E&P Company, L.P.
Well VPR "C" -139
Field Purgatoire River
County Las Animas State CO

Location: API # : 05 071 09060 00
1799' FSL & 477' FWL

SEC 1 TWP 35S RGE 67W

Permanent Datum Ground Level Elevation 7979'
Log Measured From Ground Level
Drilling Measured From Ground Level

Other Services
Temp
Elevation
K.B. -----
D.F. -----
G.L. 7979'

Date 3-1-07

Run Number	One
Depth Driller	2615'
Depth Logger	2496'
Bottom Logged Interval	2494'
Top Log Interval	Surface
Open Hole Size	7 7/8"
Type Fluid	Water
Density / Viscosity	///
Max. Recorded Temp.	125F
Estimated Cement Top	64'
Time Well Ready	Portable Mast
Time Logger on Bottom	10:00AM
Equipment Number	T0698
Location	Trinidad
Recorded By	J Sinerros
Witnessed By	

Borehole Record		Tubing Record					
Run Number	Bit	From	To	Size	Weight	From	To

Casing Record	Size	Wgt/Ft	Top	Bottom
Surface String	8 5/8"		00	324'
Prot. String				
Production String	5 1/2"		00	N/A
Liner				

<<< Fold Here >>>

All interpretations are opinions based on inferences from electrical or other measurements and we cannot and do not guarantee the accuracy or correctness of any interpretation, and we shall not, except in the case of gross or willful negligence on our part, be liable or responsible for any loss, costs, damages, or expenses incurred or sustained by anyone resulting from any interpretation made by any of our officers, agents or employees. These interpretations are also subject to our general terms and conditions set out in our current Price Schedule.

Comments

Lorencito Gate-Turn Right at Y, take second right, follow road to to of hill,
at T turn right, take next right to location.



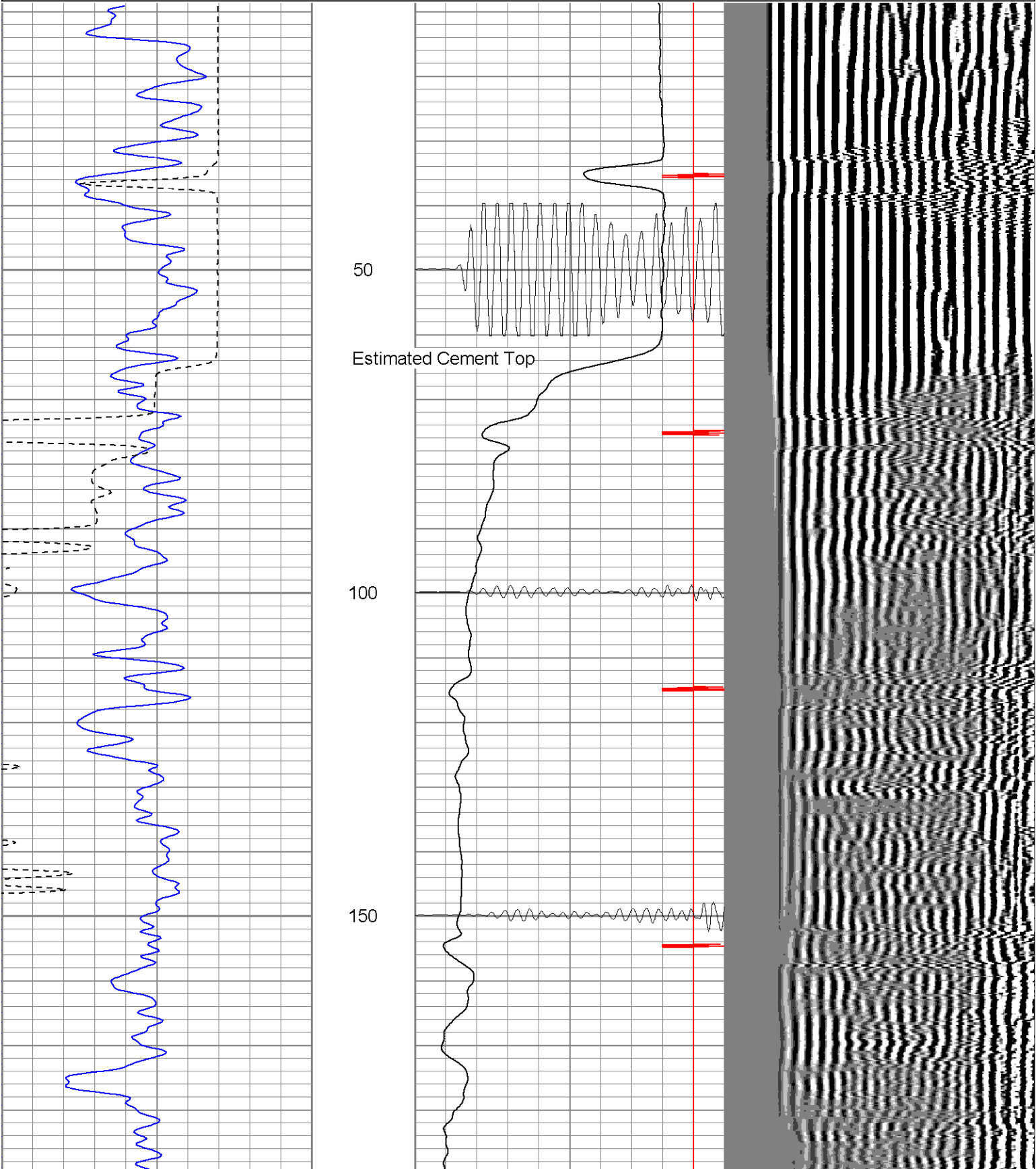
SUPERIOR

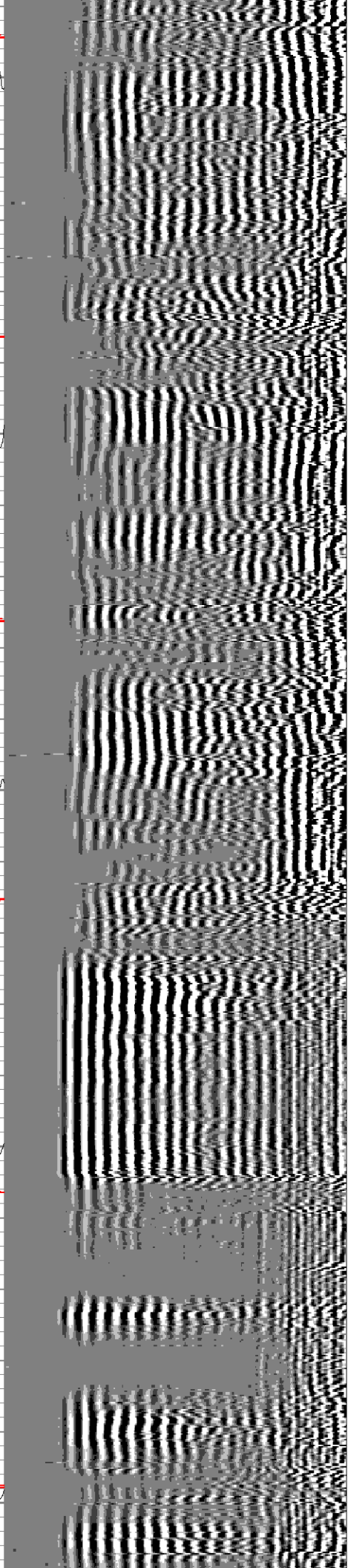
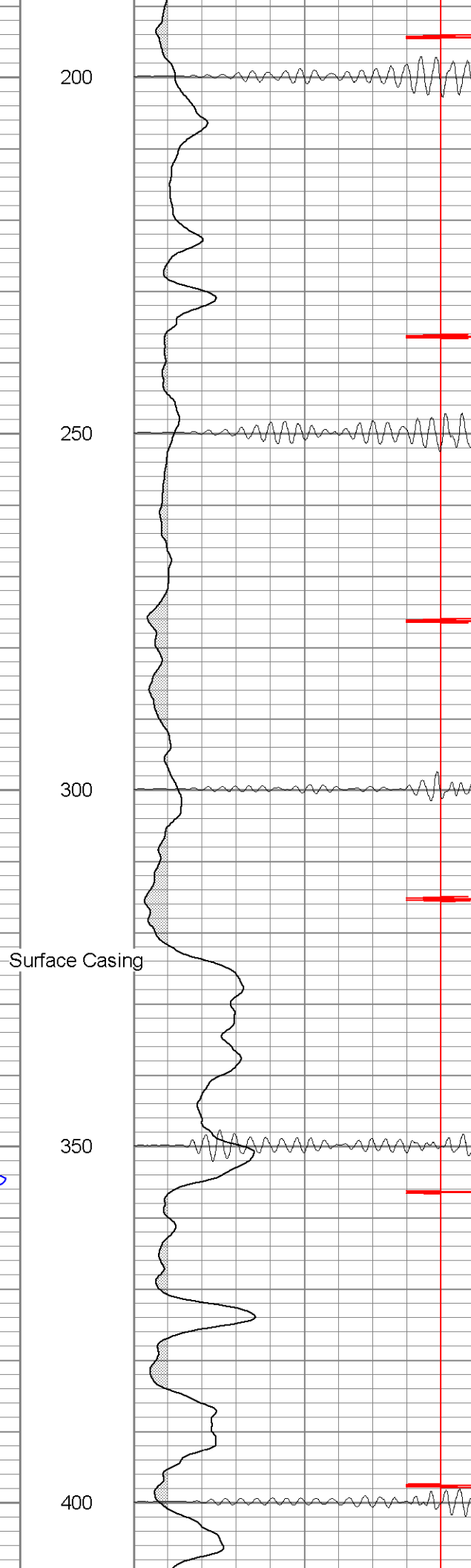
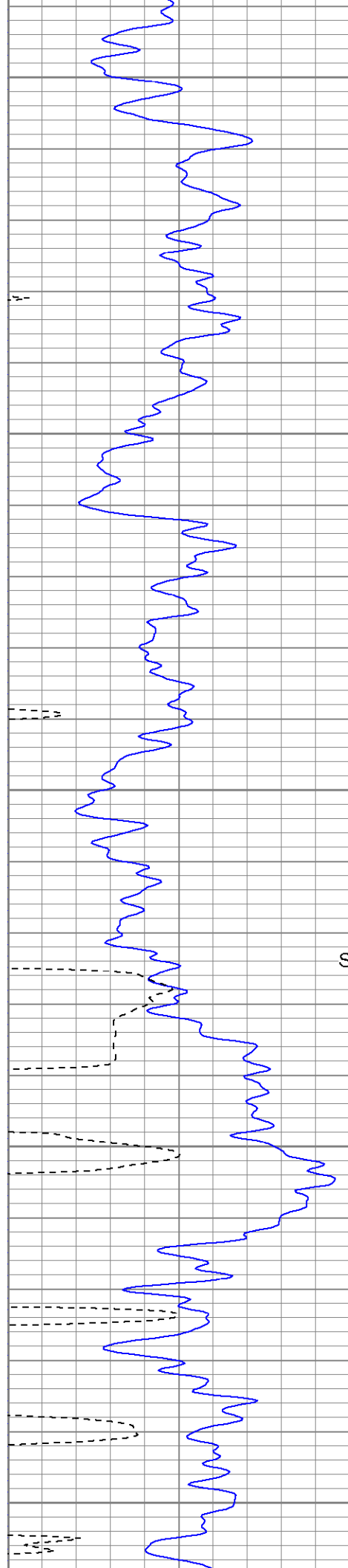
Black Lick, Pa.
Mercer, Pa.
Wooster, Oh.
Cleveland, Ok.
Trinidad, Co.

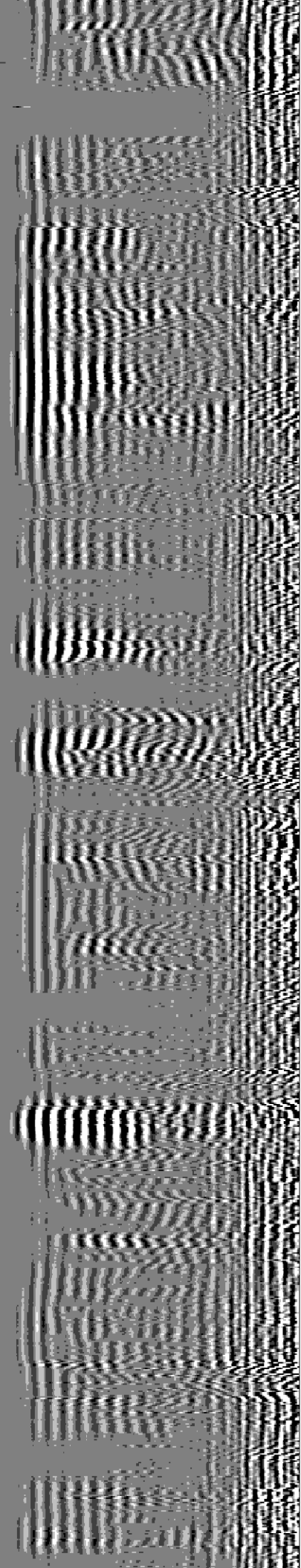
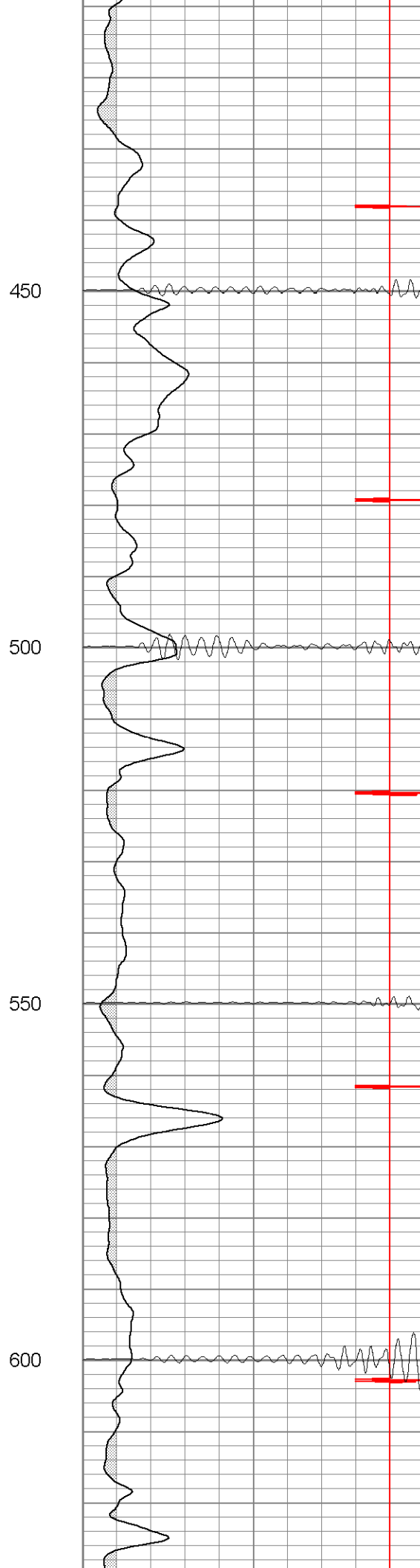
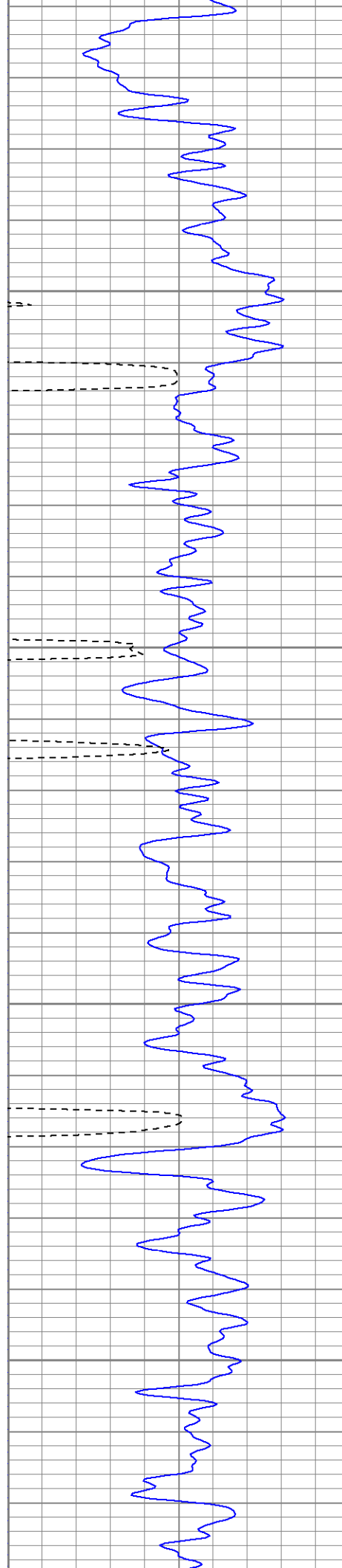
Main Pass

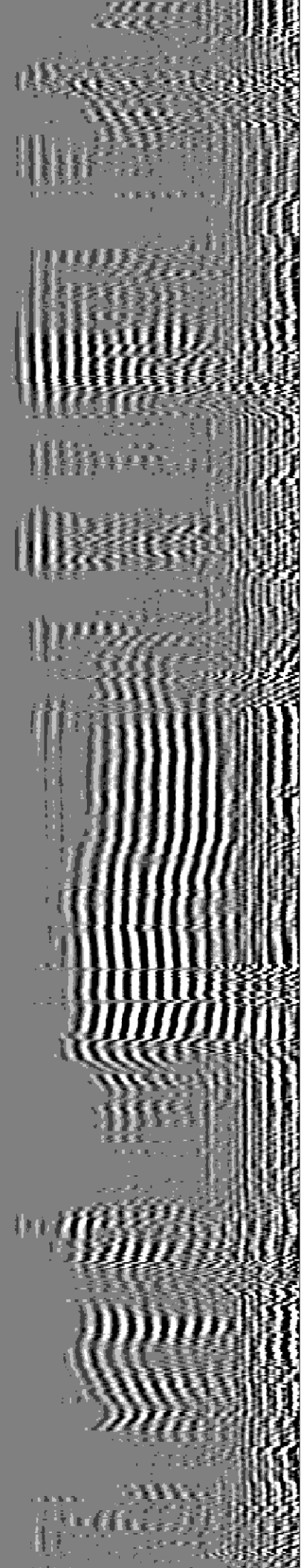
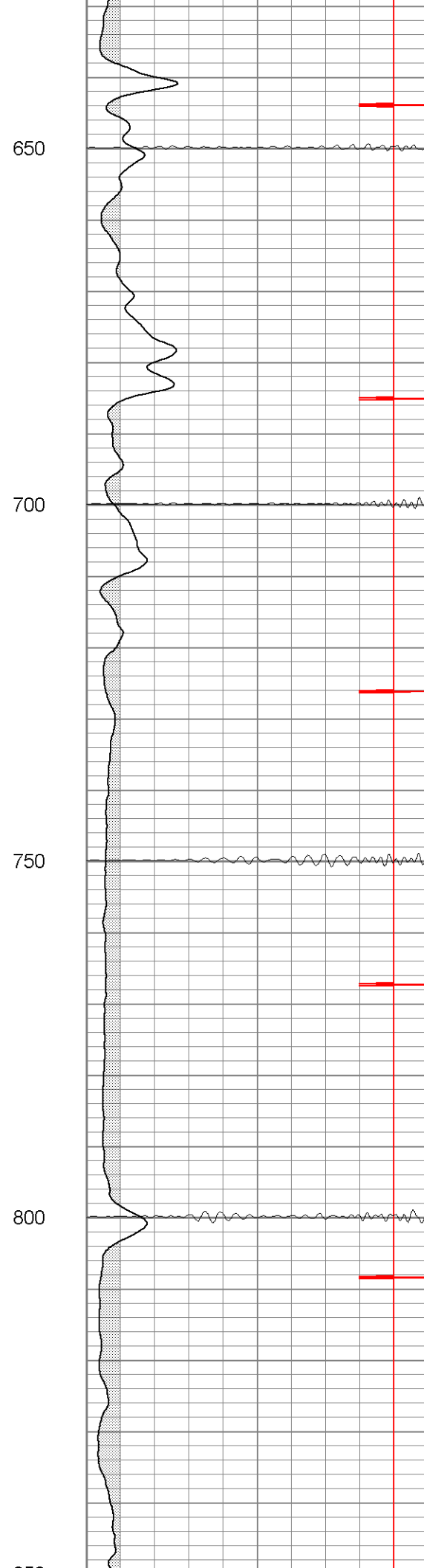
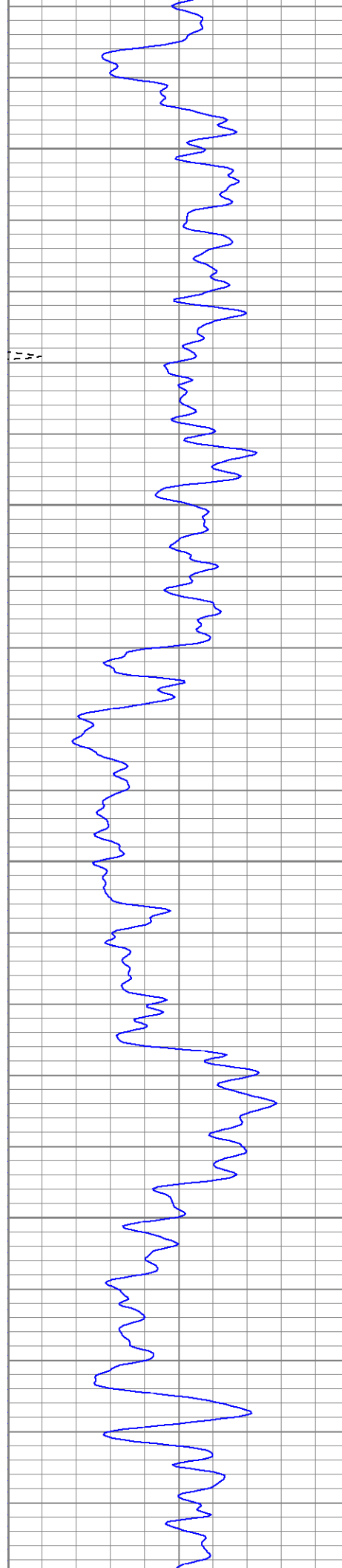
Database File: vprc1393107b.db
Dataset Pathname: pass2.1
Presentation Format: cblrt
Dataset Creation: Fri Mar 02 07:41:58 2007 by Calc Open-Cased 060407
Charted by: Depth in Feet scaled 1:240

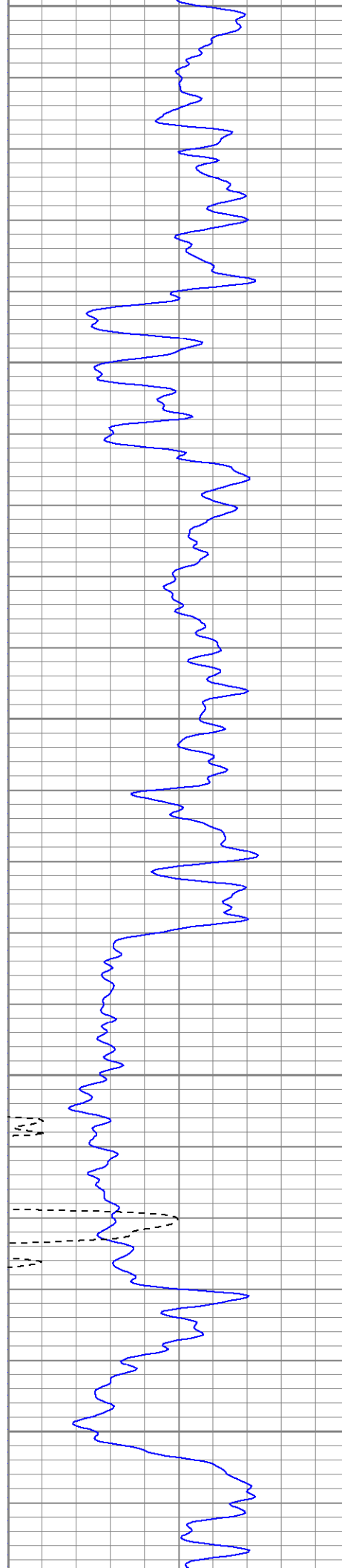
0	GR (GAPI)	200	0	AMP3 (mV)	100	200	Variable Density	1200
200	GR (GAPI)	400	18	CCL	-2			
400	TT3 (usec)	200	200	CBL5	1200			



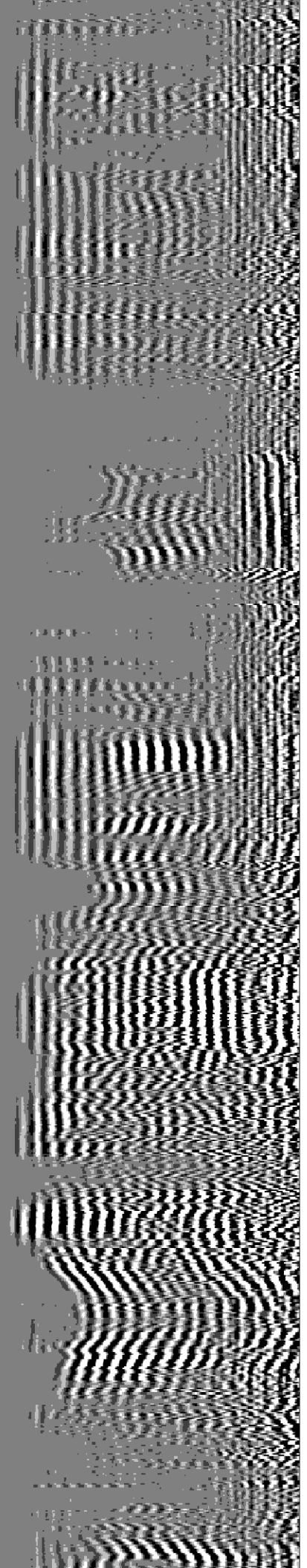
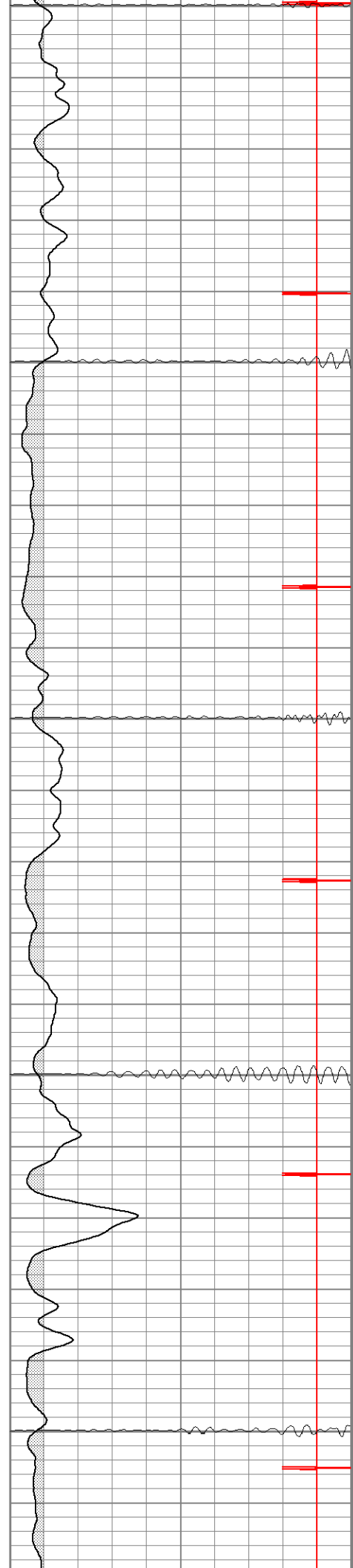


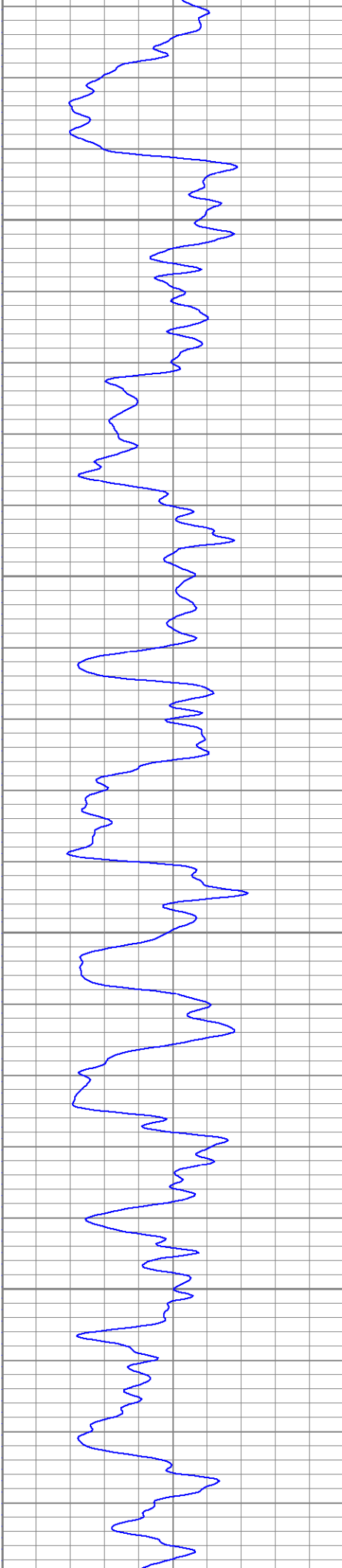






850
900
950
1000
1050



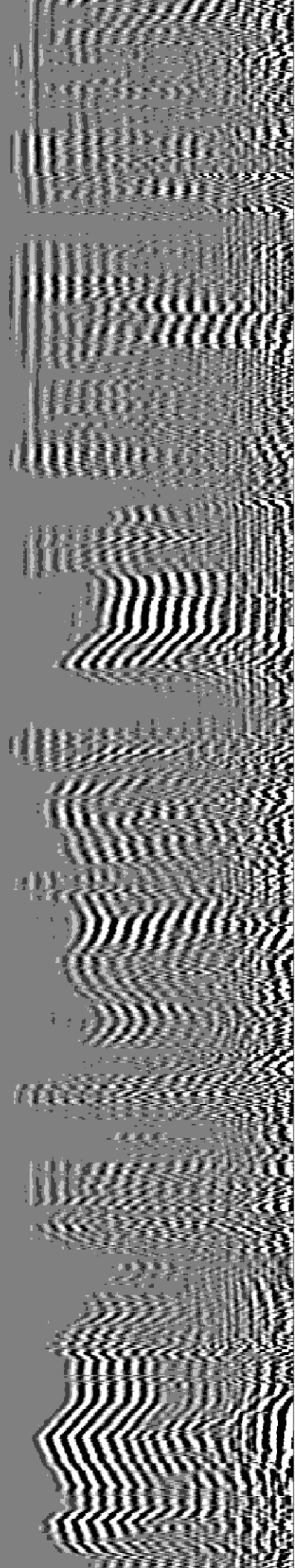


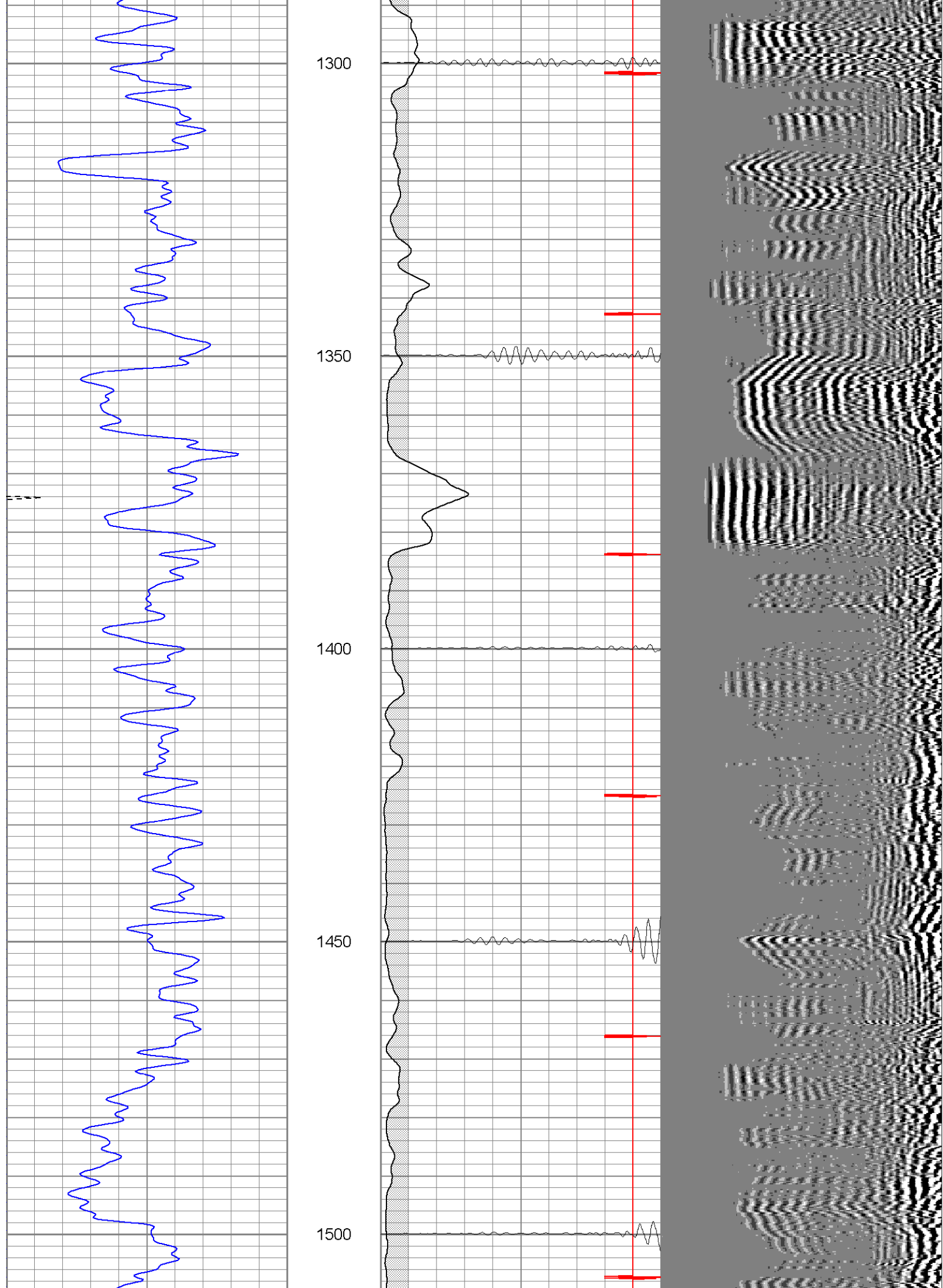
1100

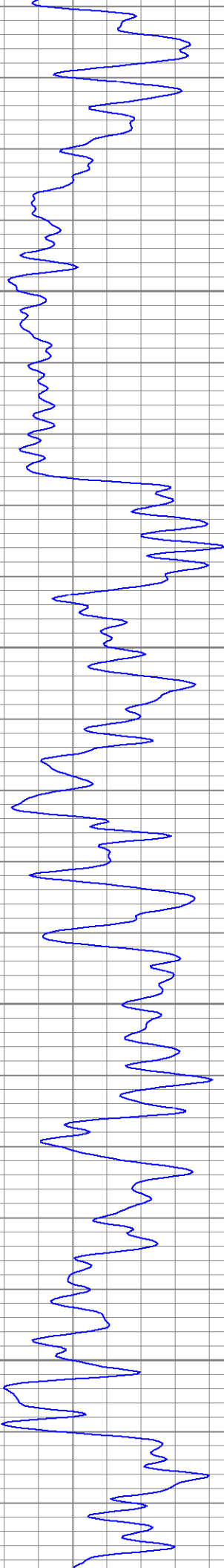
1150

1200

1250





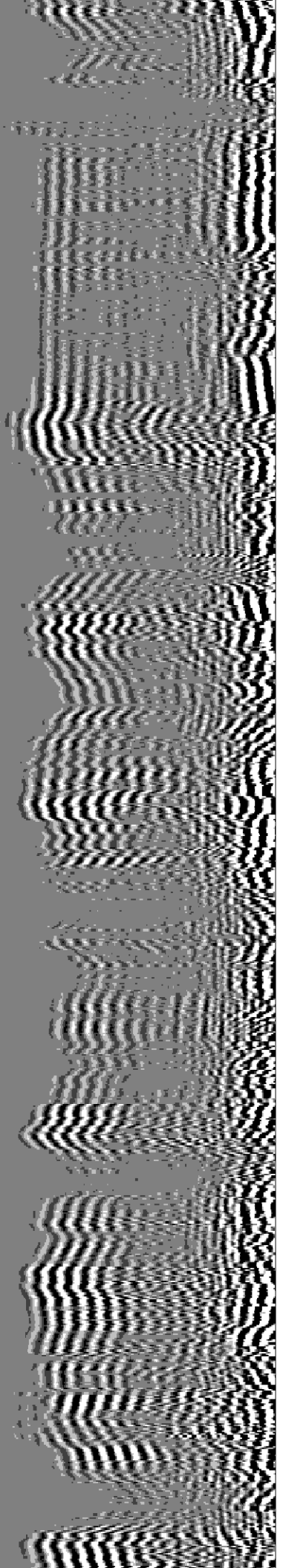


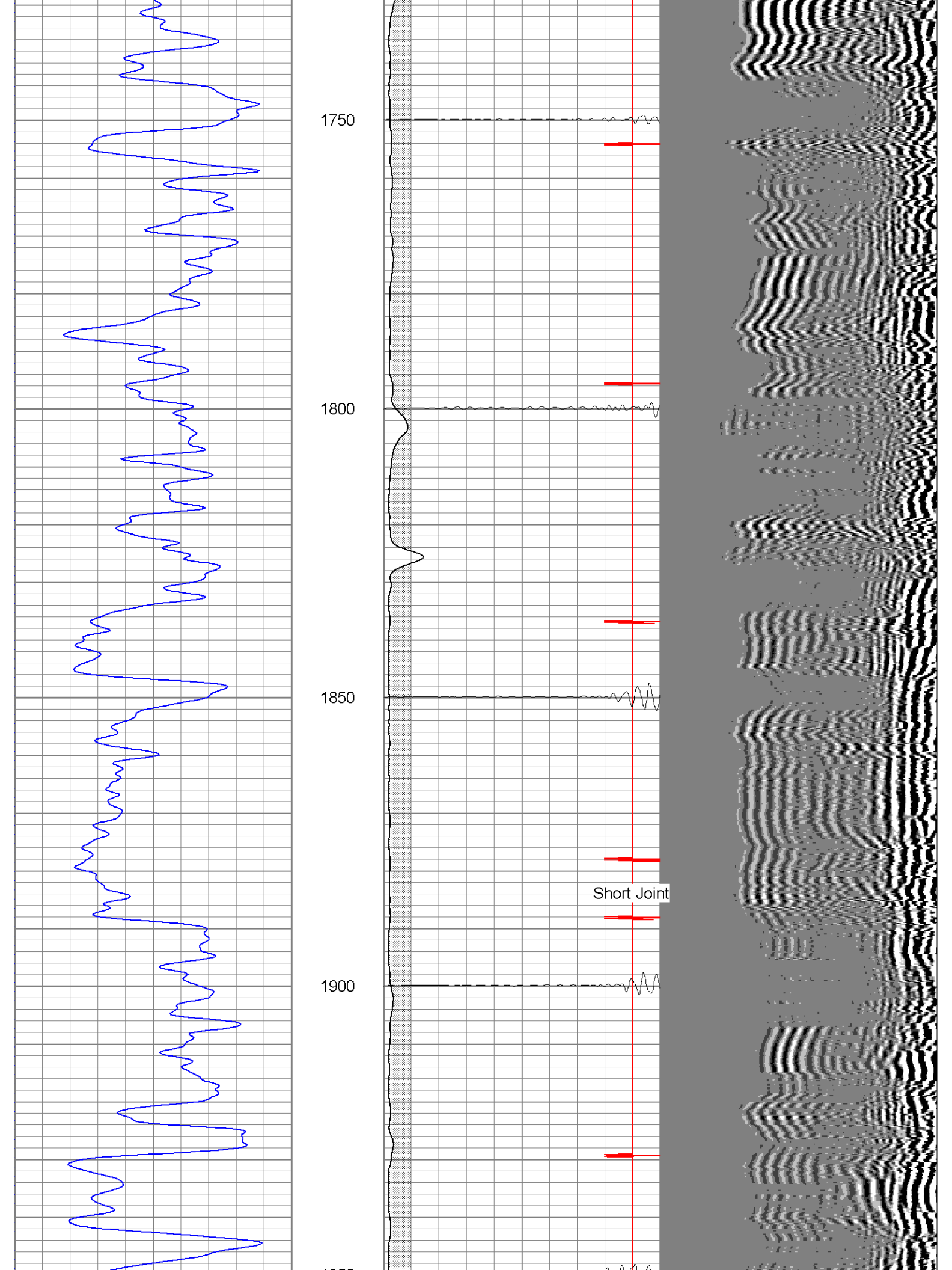
1550

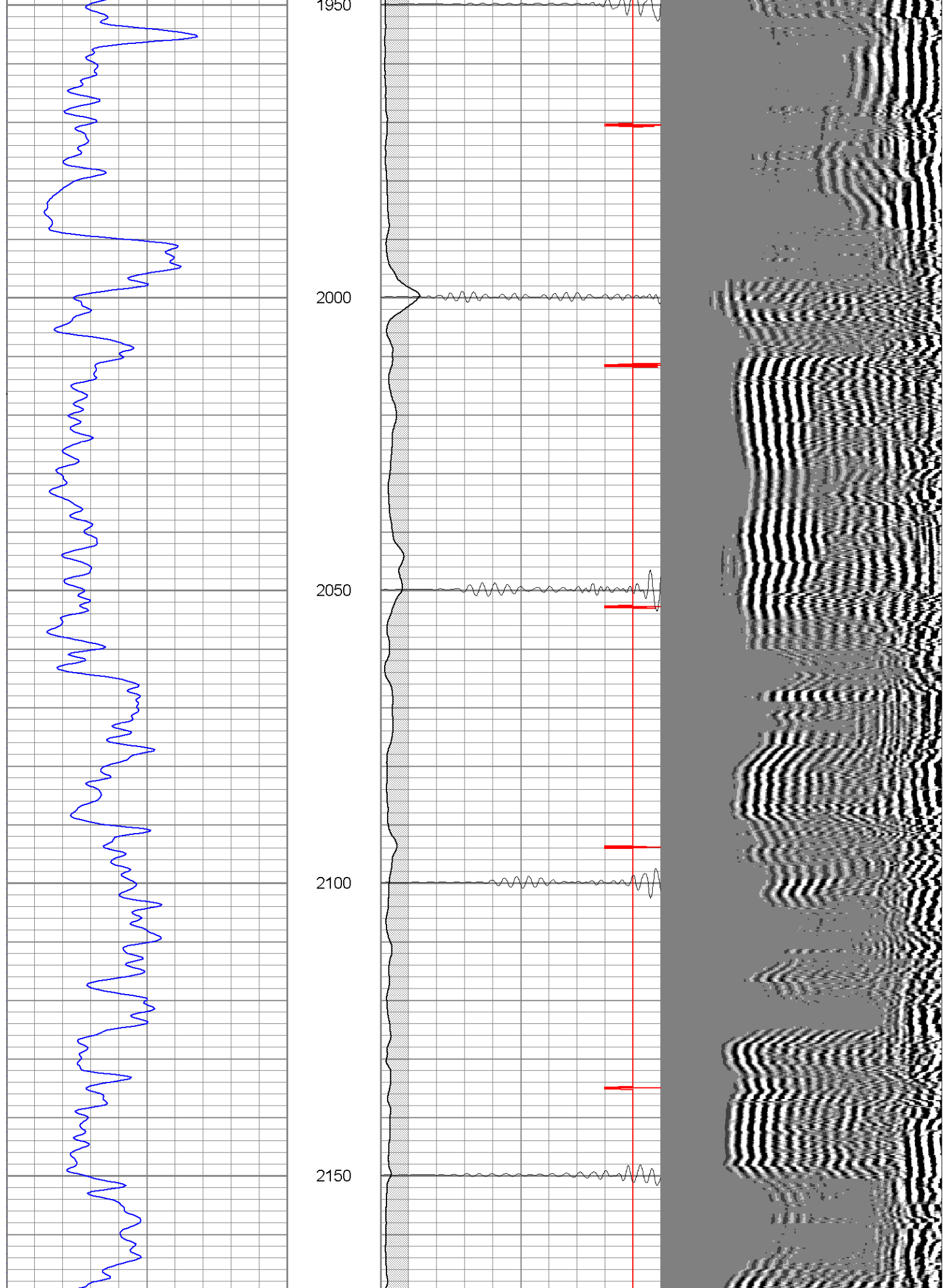
1600

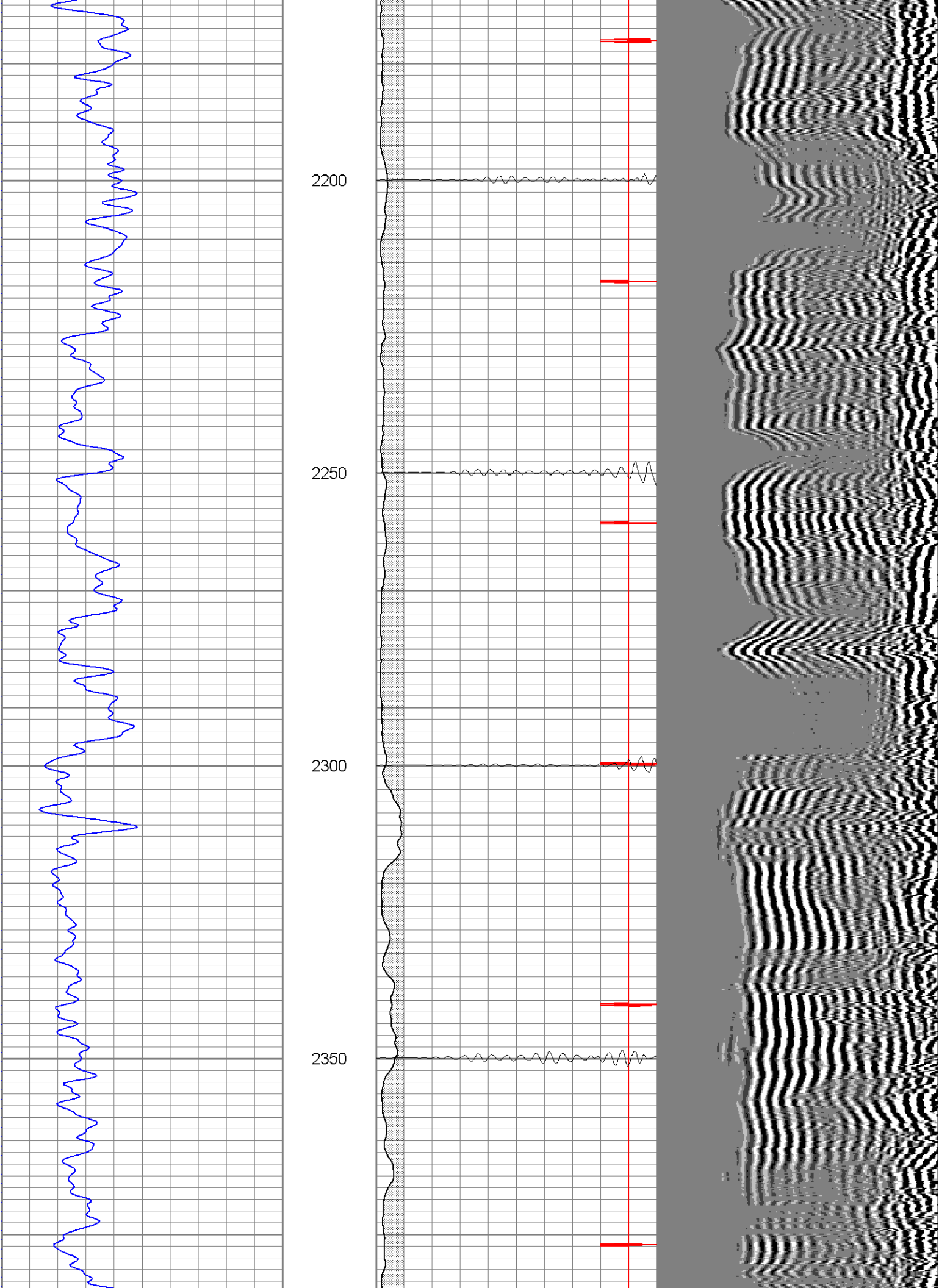
1650

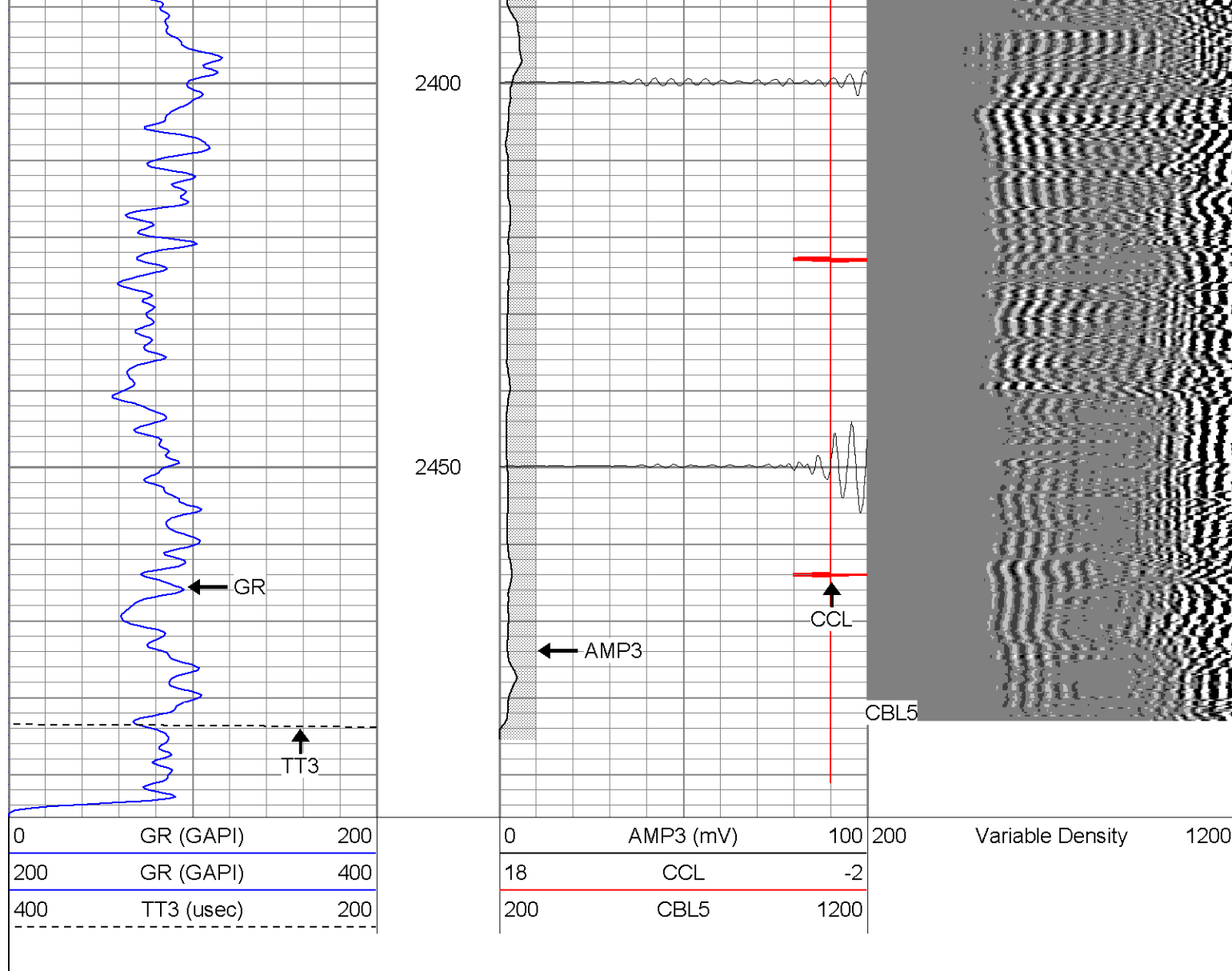
1700









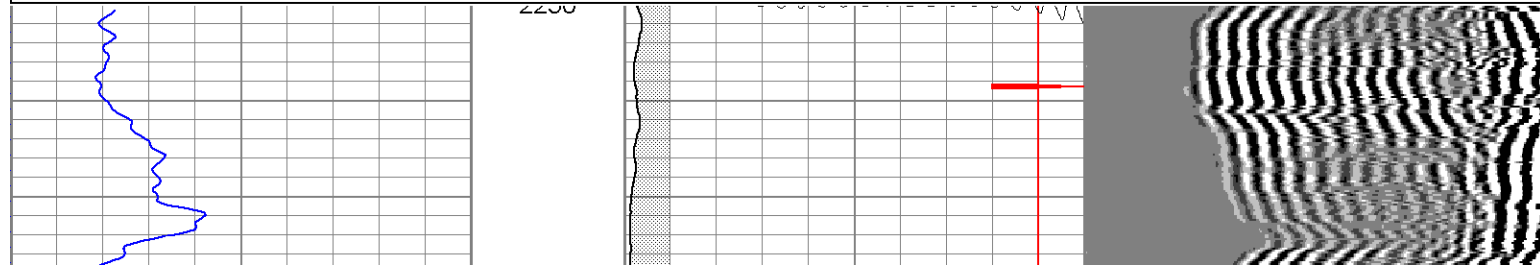
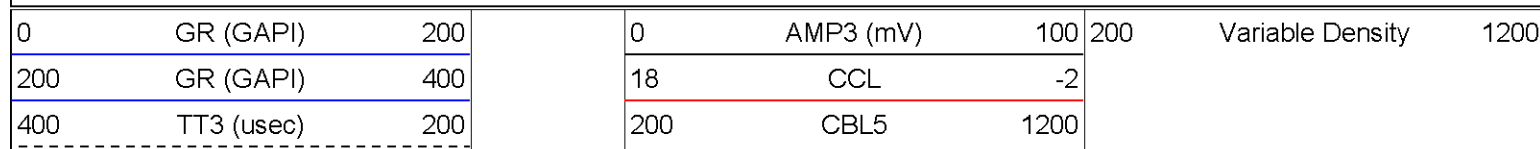


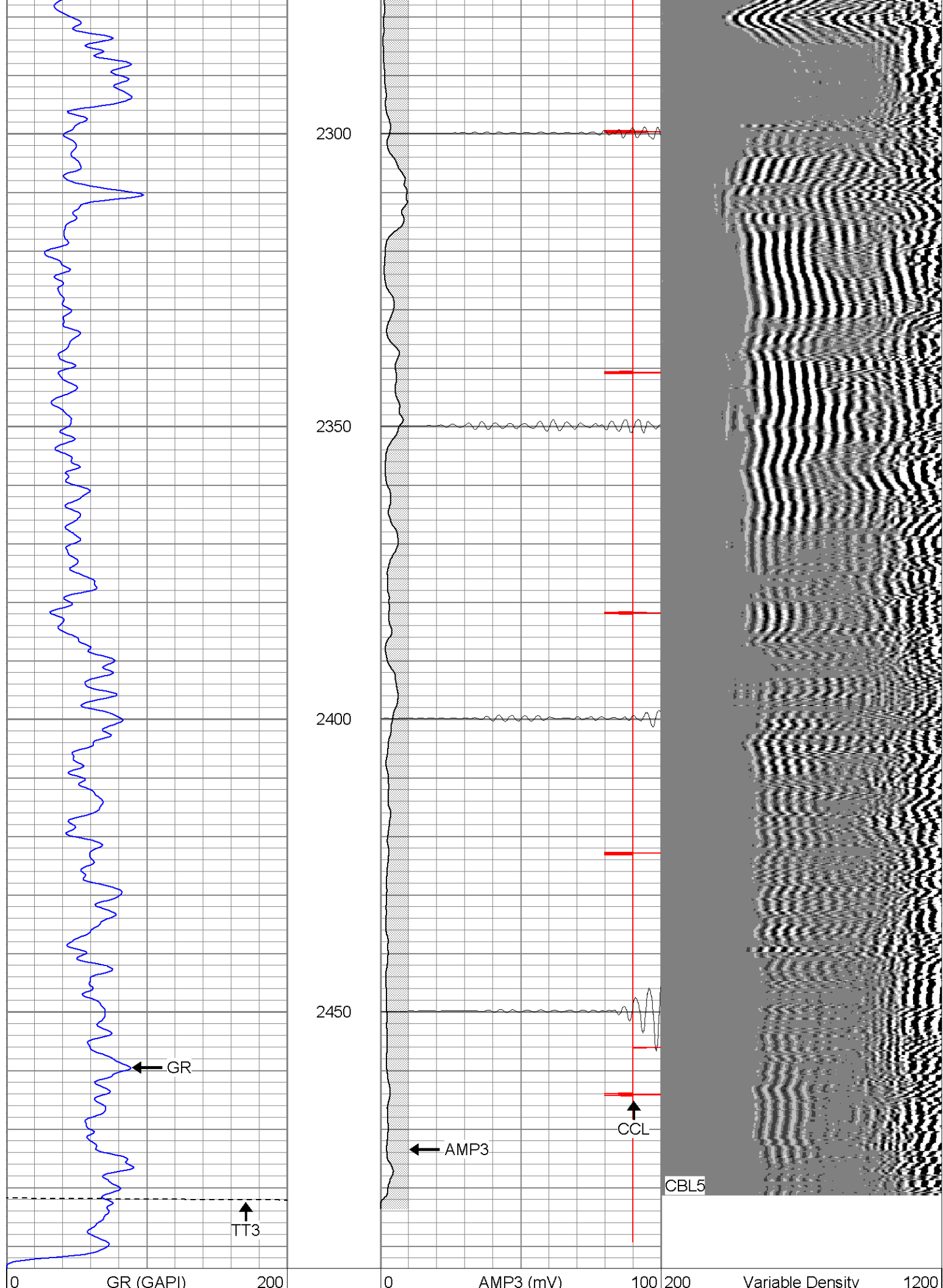
SUPERIOR

Black Lick, Pa.
Mercer, Pa.
Wooster, Oh.
Cleveland, Ok.
Trinidad, Co.

Repeat Section

Database File: vprc1393107b.db
Dataset Pathname: pass1.1
Presentation Format: cblrt
Dataset Creation: Fri Mar 02 07:50:11 2007 by Calc Open-Cased 060407
Charted by: Depth in Feet scaled 1:240





200	GR (GAPI)	400	18	CCL	-2
400	TT3 (usec)	200	200	CBL5	1200

Calibration Report			
Database File:	vprc1393107b.db		
Dataset Pathname:	pass1		
Dataset Creation:	Thu Mar 01 10:25:32 2007 by Log Open-Cased 060407		
Gamma Ray Calibration Report			
Serial Number:	Titan2.75		
Tool Model:	2.75		
Performed:	Thu Mar 01 10:11:18 2007		
Calibrator Value:	200.0	GAPI	
Background Reading:	40.0	cps	
Calibrator Reading:	240.0	cps	
Sensitivity:	1.0000	GAPI/cps	
Cement Bond Log Calibration Report			
Serial Number:	Titan4		
Tool Model:	4		
Performed:	Tue Feb 27 16:20:29 2007		
Depth:	1054.62	ft	
Casing Diameter:	5.5	in	
	3' Spacing	5' Spacing	
Signal Zero:	0	1	mV
Calibrated Amplitude:	85	85	mV
Reading at Signal Zero:	0.00161133	0.0143555	V
Reading in Free Pipe:	1.27	1.65081	V
Gain:	67.0142	51.3306	
Offset:	-0.107982	0.263125	

Sensor	Offset (ft)	Schematic	Description	Len (ft)	OD (in)	Wt (lb)
CHD	20.38		CHD-None (0)	0.75	1.50	5.00
CENT	19.63		CENT-X (2)	3.00	1.69	25.00
WVF5	12.82		CBL-4 (Titan4)	8.15	2.25	110.00
WVF3	11.82					
CENT	8.48		CENT-X (1)	3.00	1.69	25.00
CCL	4.27		CCL-2.75 (Titan2.75)	1.71	2.75	15.00
GR	1.42		GR-2.75 (Titan2.75) Two Point	3.77	2.75	25.00

Dataset:	vprc1393107b.db: field/well/run1/pass1
Total Length:	20.38 ft
Total Weight:	205.00 lb
O.D.	2.75 in