

Company	Pioneer Natural Resources	Company	Pioneer Natural Resources
Well	Santa Fe 43-27 Tr	Well	Santa Fe 43-27 Tr
Field	Purgatoire River	Field	Purgatoire River
County	Las Animas	County	Las Animas
State	Colorado	State	Colorado
Location:	API # : 05 071 08303 00	Other Services	SIL
Permanent Datum	SEC 27 TWP 33S RGE 67W	Elevation	
Log Measured From	Ground Level	K.B. 7197'	
Drilling Measured From	Kelly Bushing 4' Above G.L.	D.F. -----	
	Kelly Bushing	G.L. 7193'	
Date	3-08-05		
Run Number	Two		
Depth Driller	1325'		
Depth Logger	1324'		
Bottom Logged Interval	1322'		
Top Log Interval	Surface		
Casing Driller	8 5/8" @ 318'		
Casing Logger	318'		
Bit Size	7 7/8"		
Type Fluid in Hole	Water		
Density / Viscosity	///		
pH / Fluid Loss	///		
Source of Sample	///		
Rm @ Meas. Temp	///		
Rmf @ Meas. Temp	///		
Rmc @ Meas. Temp	///		
Source of Rmf / Rmc	///		
Rm @ BHT	///		
Time Circulation Stopped	8:00 A.M.		
Time Logger on Bottom	10:15 A.M.		
Maximum Recorded Temperature	///		
Equipment Number	T720		
Location	Trinidad		
Recorded By	M. Norton		
Witnessed By	Mr. John Lamb		

<<< Fold Here >>>

All interpretations are opinions based on inferences from electrical or other measurements and we cannot and do not guarantee the accuracy or correctness of any interpretation, and we shall not, except in the case of gross or willful negligence on our part, be liable or responsible for any loss, costs, damages, or expenses incurred or sustained by anyone resulting from any interpretation made by any of our officers, agents or employees. These interpretations are also subject to our general terms and conditions set out in our current Price Schedule.

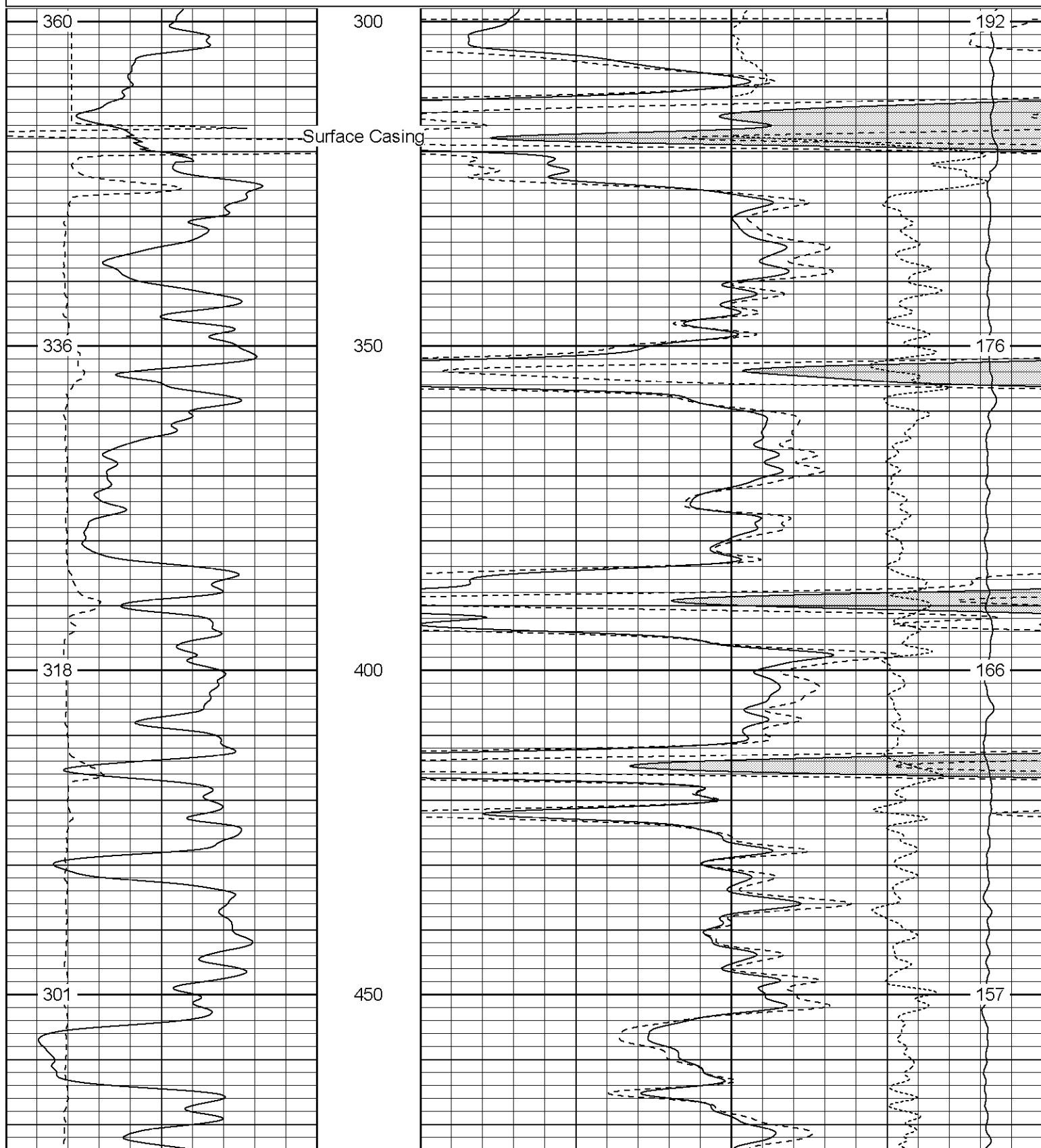
Comments

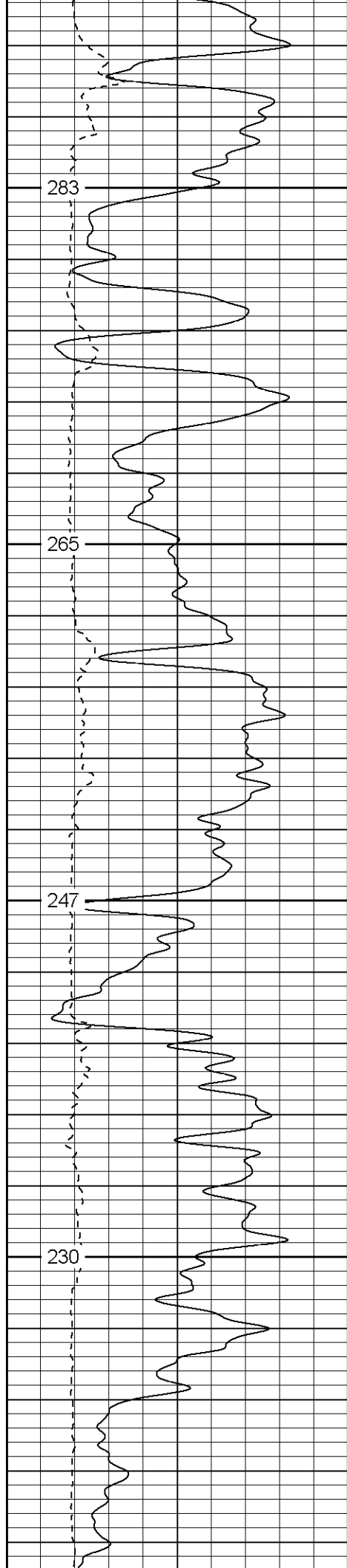
Neutron Density Porosity Presented On Sandstone Matrix
ABHV Calculated For 5 1/2" Casing
Well Directions:
Wet Canyon Second Left, At Y Stay Left, Dead End On Location.

Database File: santafetr.db
Dataset Pathname: pass4.1
Presentation Format: cdl
Dataset Creation: Tue Mar 08 11:31:27 2005 by Calc Warrior 7.0 STD Ope
Charted by: Depth in Feet scaled 1:240

0	GR (GAPI)	200
6	DCAL (in)	16

2	RHOB (g/cc)	3
1	RHOB (g/cc)	2
30	DPOR (pu)	-10
-0.5	RHOC (g/cc)	0.5
4000	LTEN (lb)	0



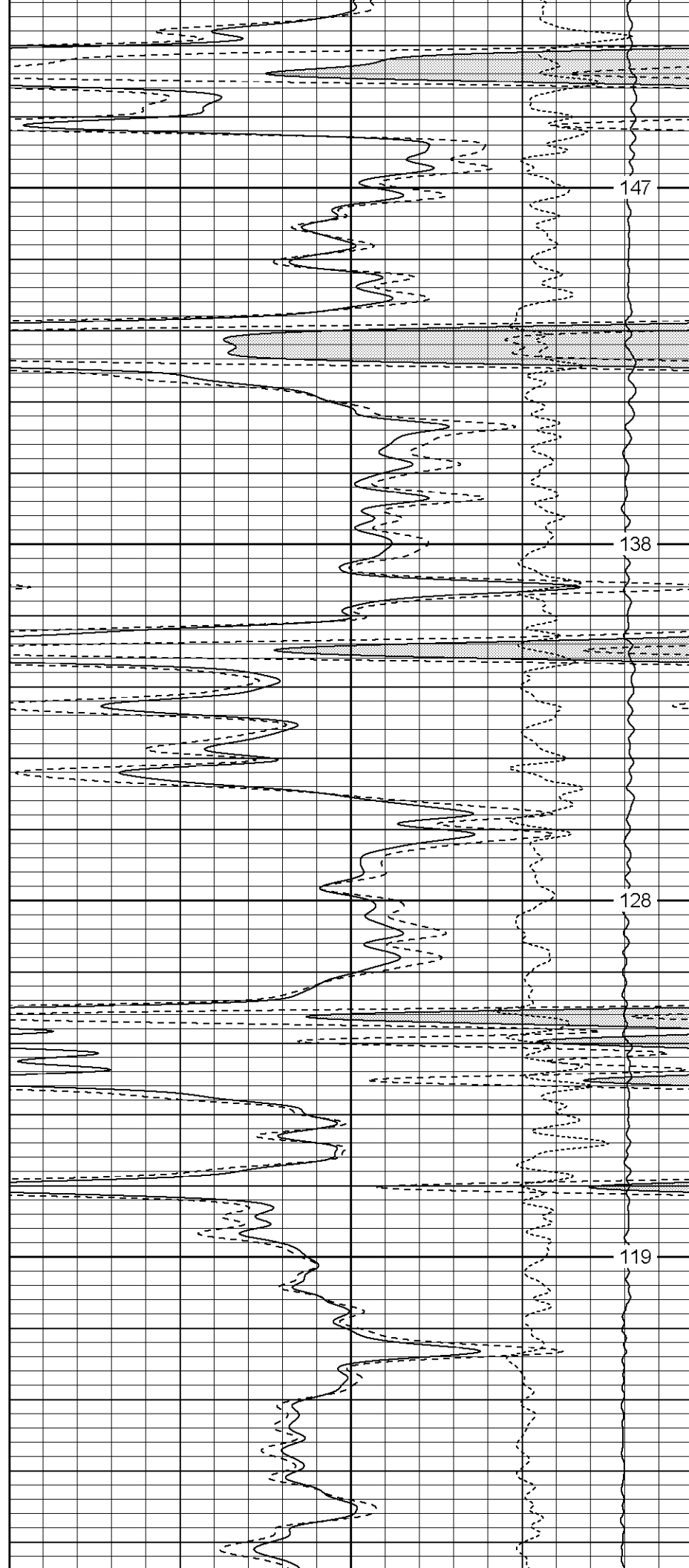


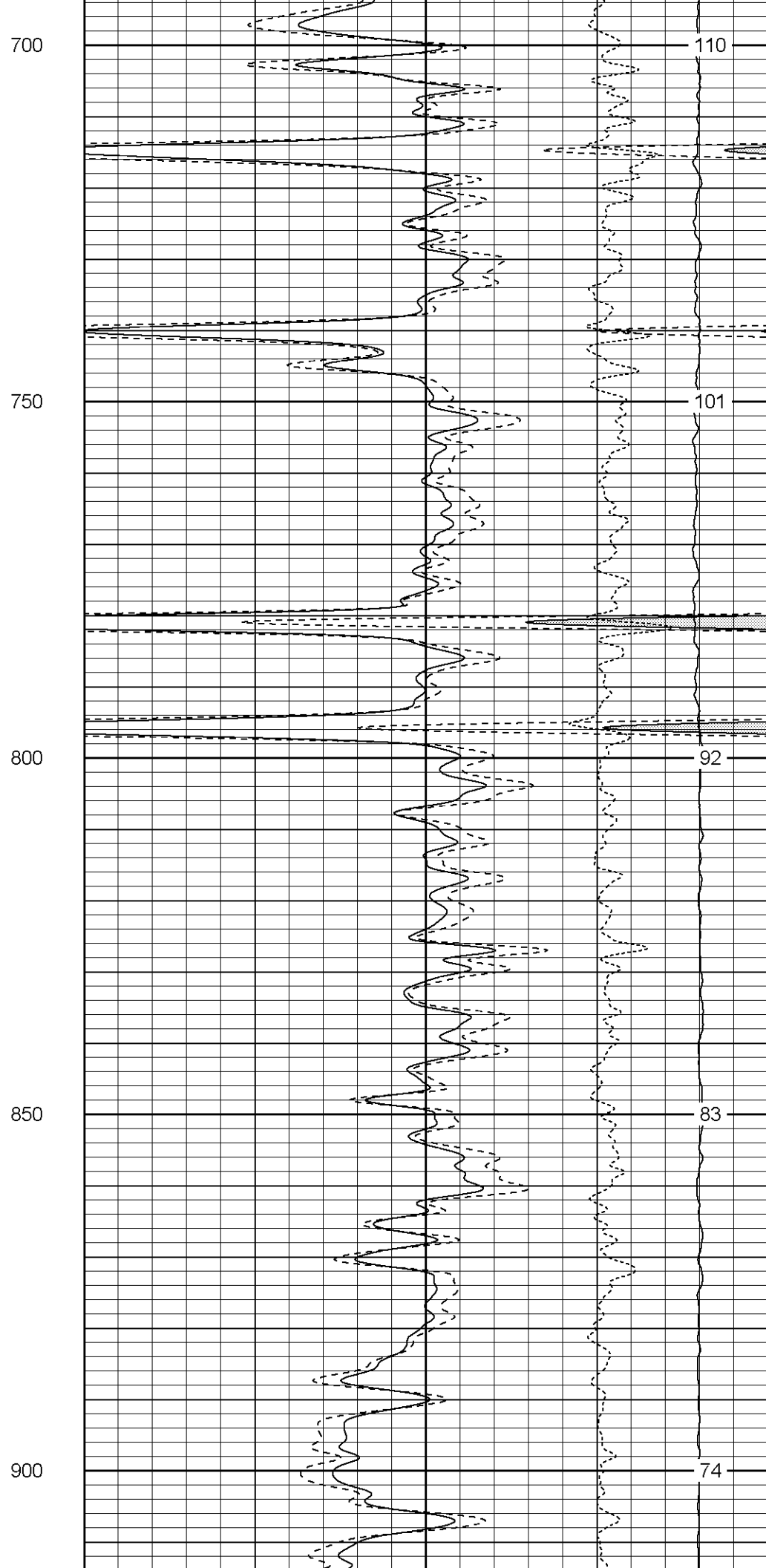
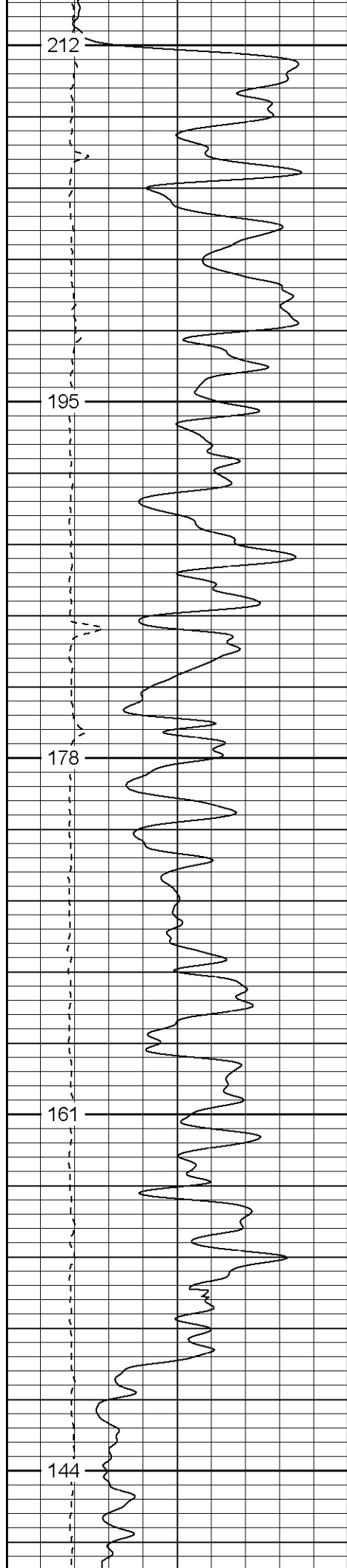
500

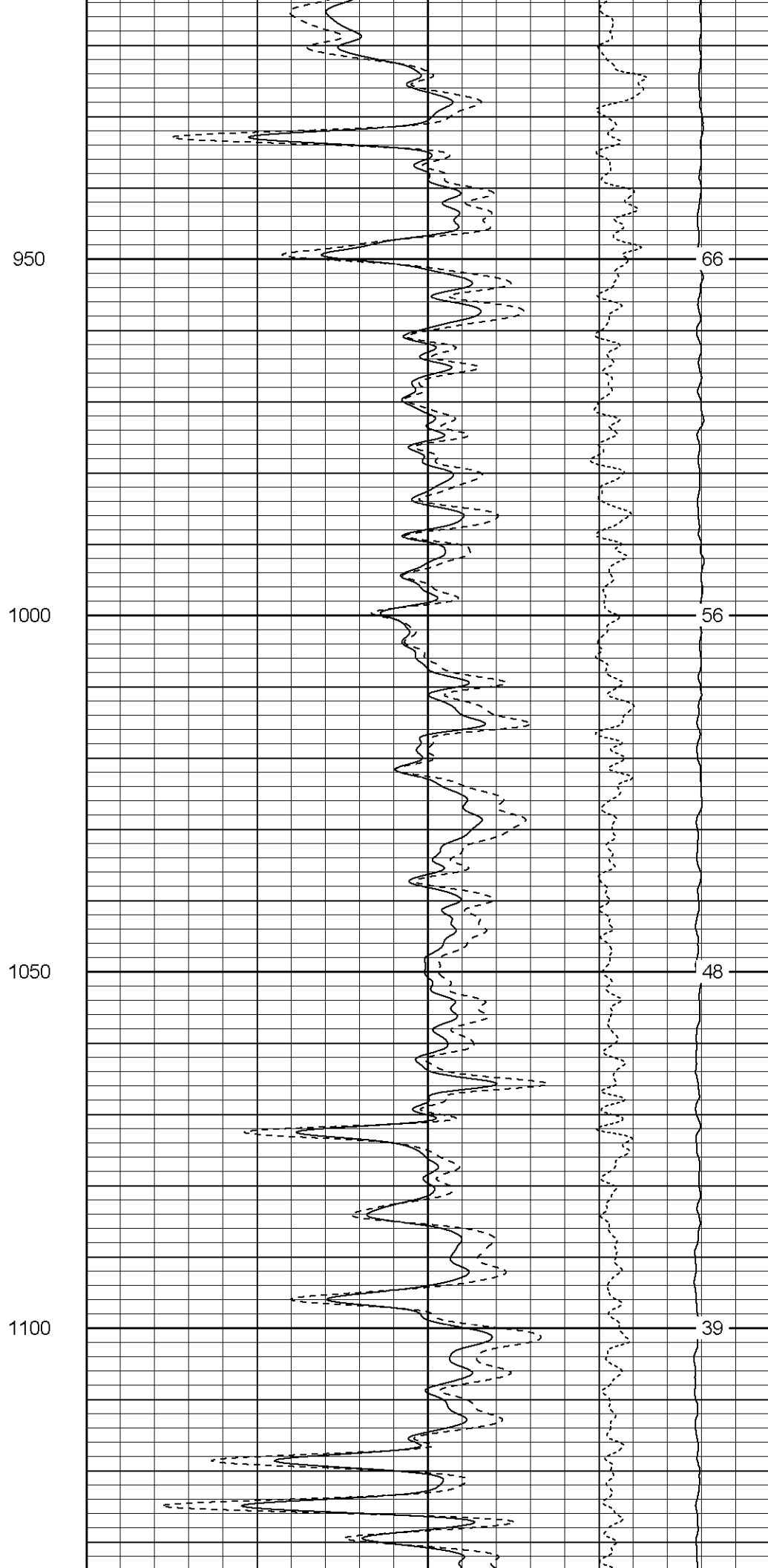
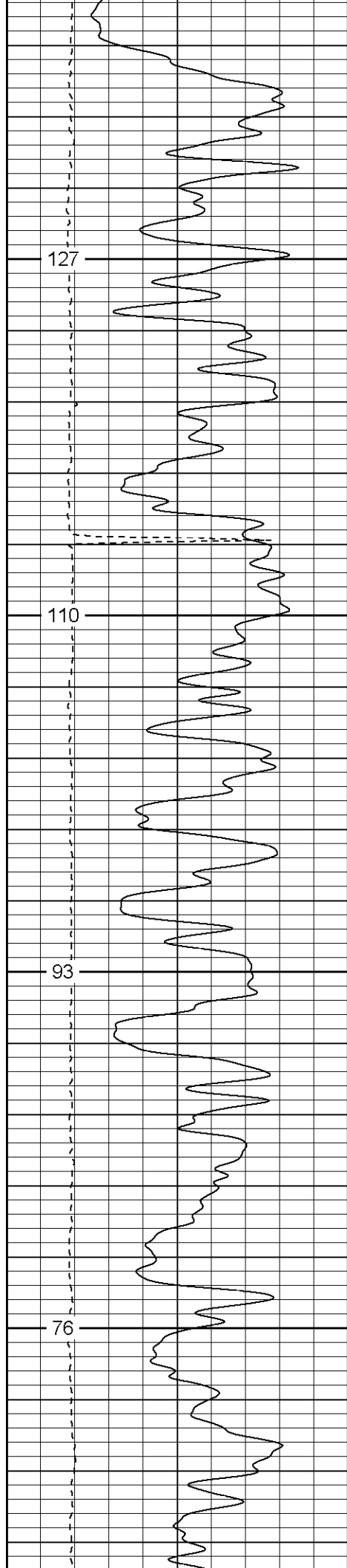
550

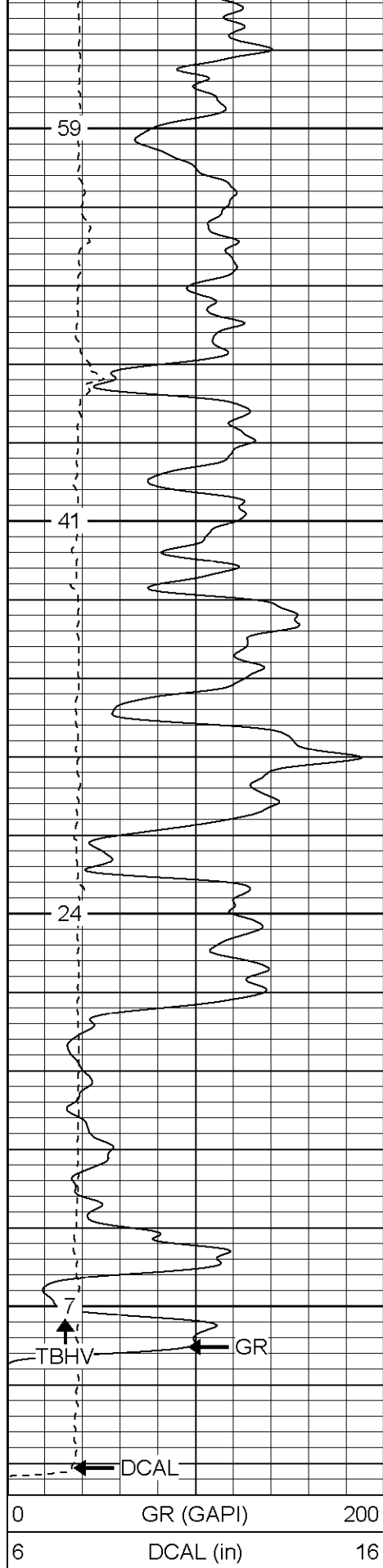
600

650







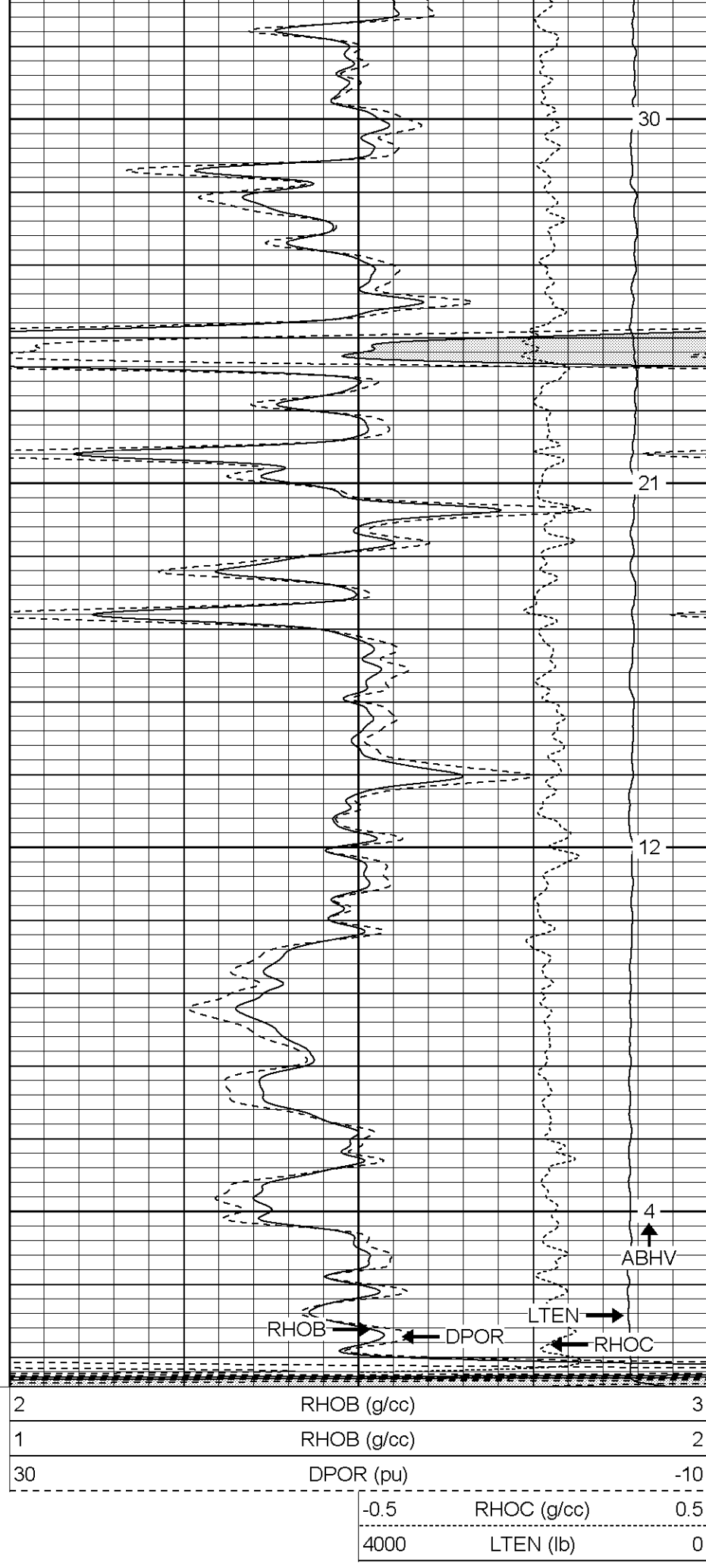


1150

1200

1250

1300



30

21

12

4

0	GR (GAPI)	200
6	DCAL (in)	16

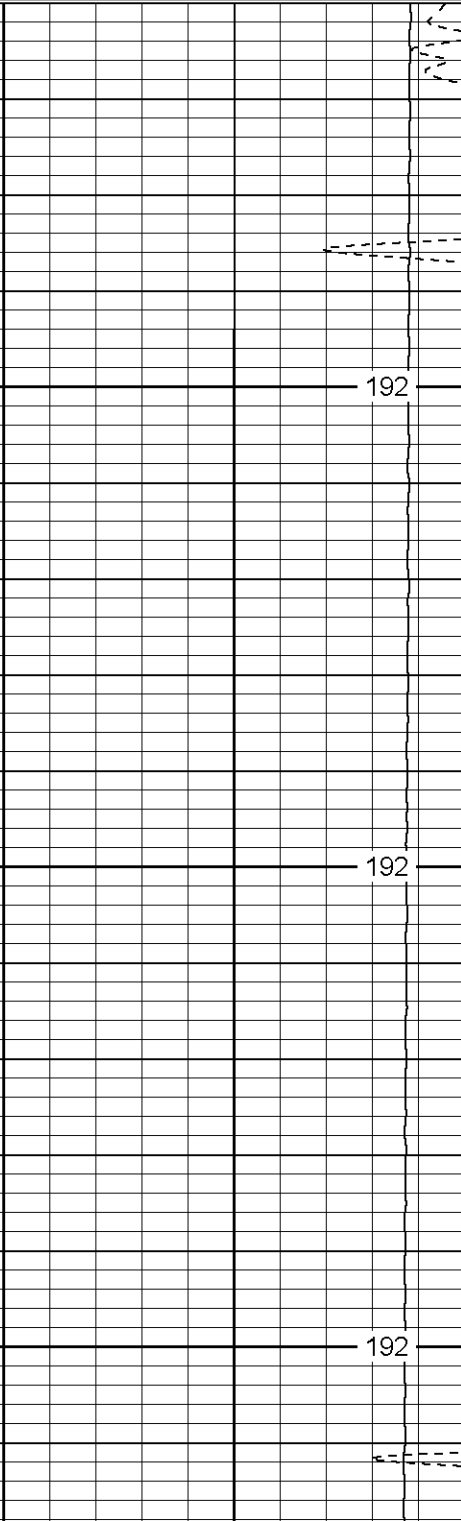
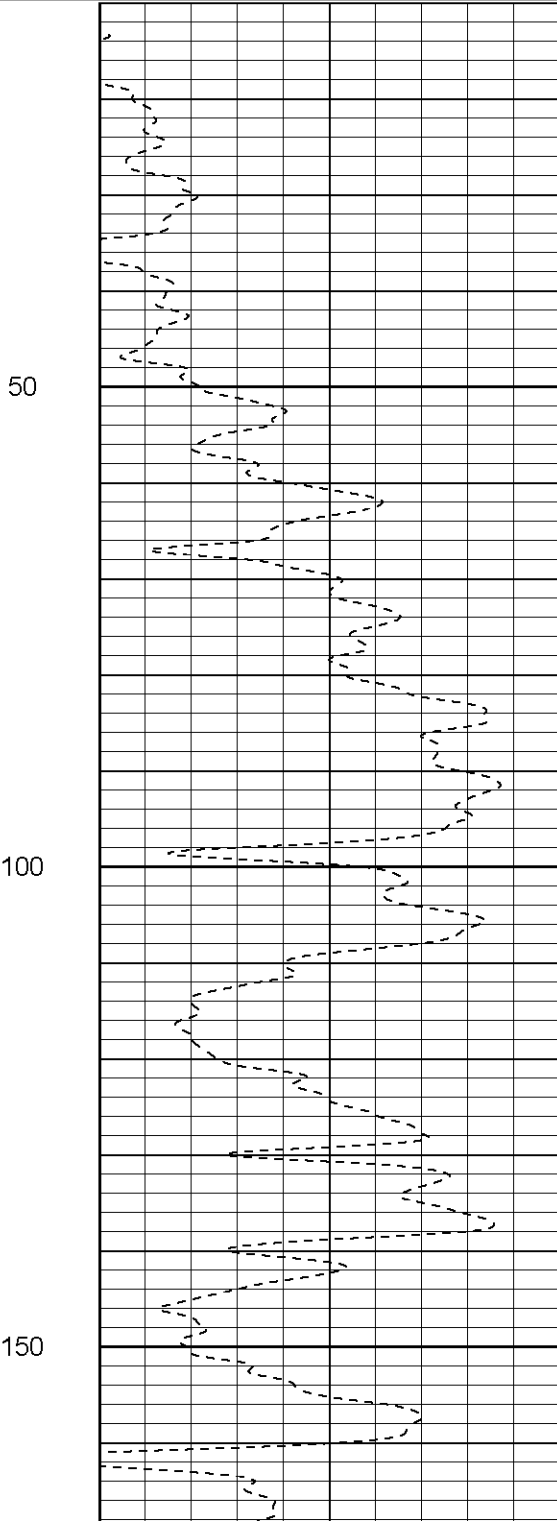
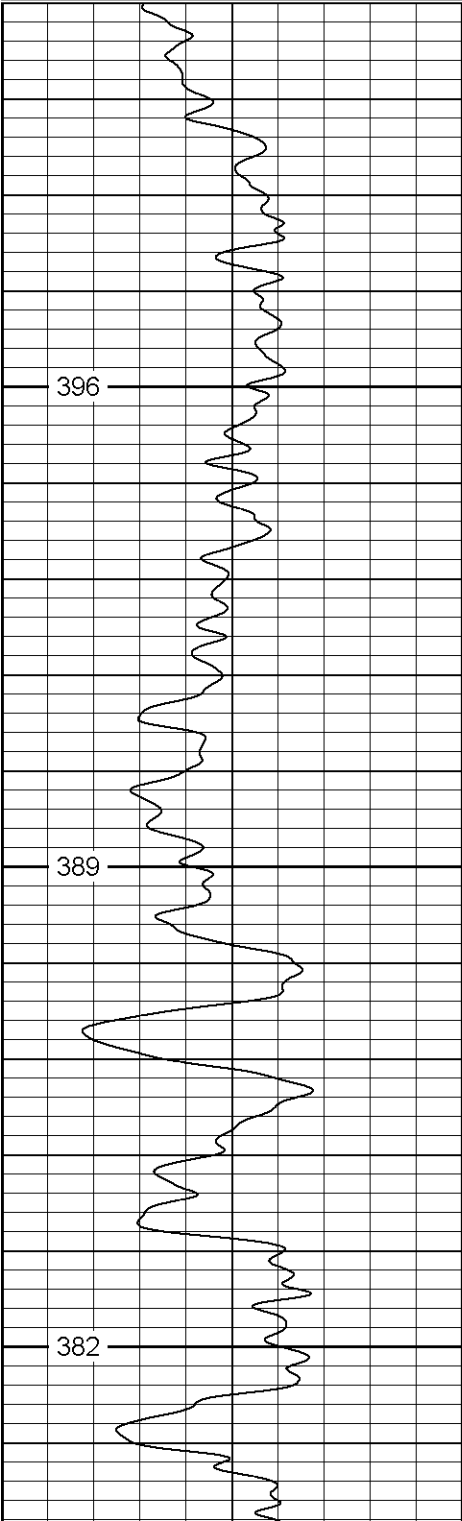
2	RHOB (g/cc)	3
1	RHOB (g/cc)	2
30	DPOR (pu)	-10
-0.5	RHOC (g/cc)	0.5
4000	LTEN (lb)	0

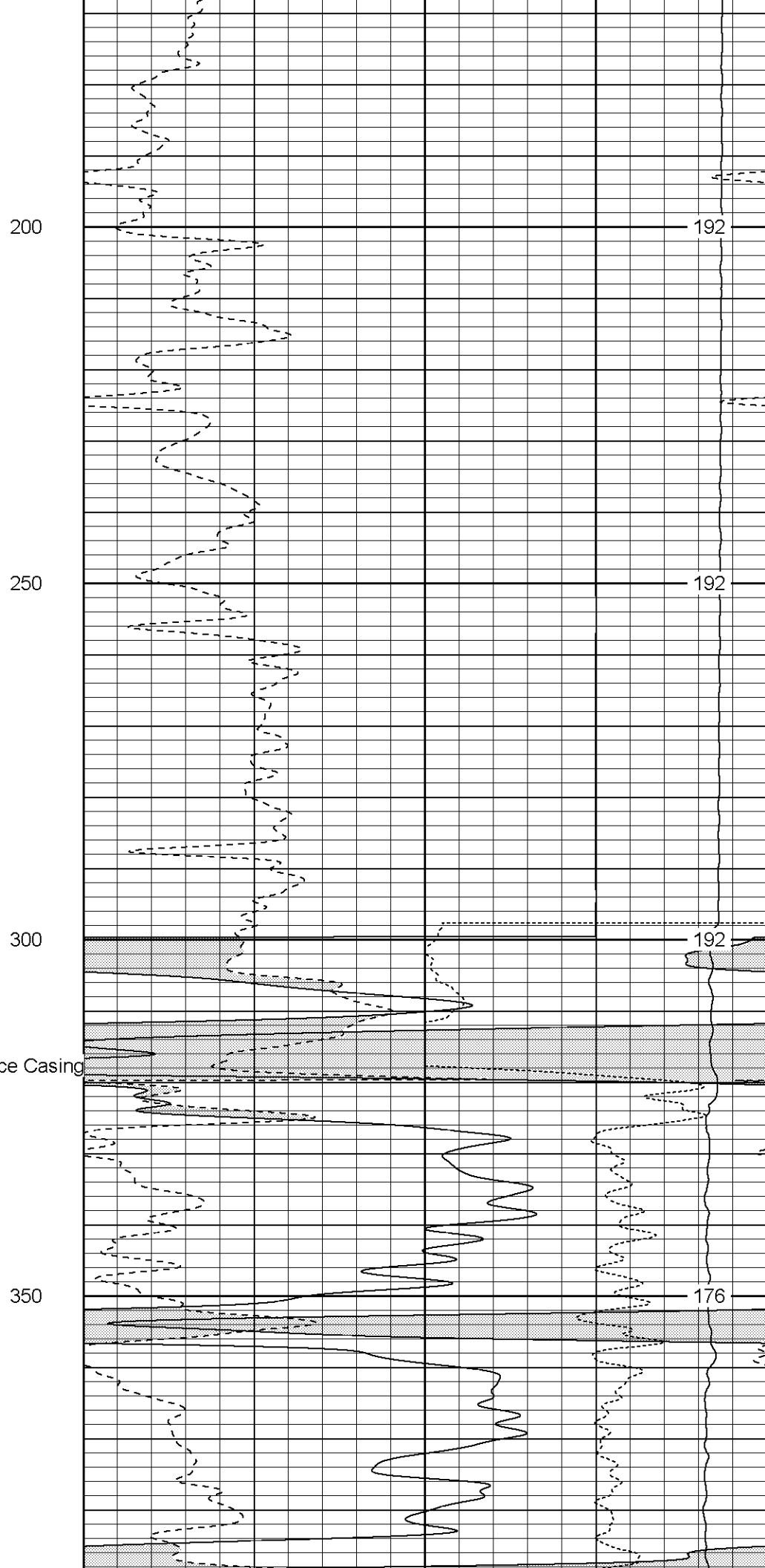
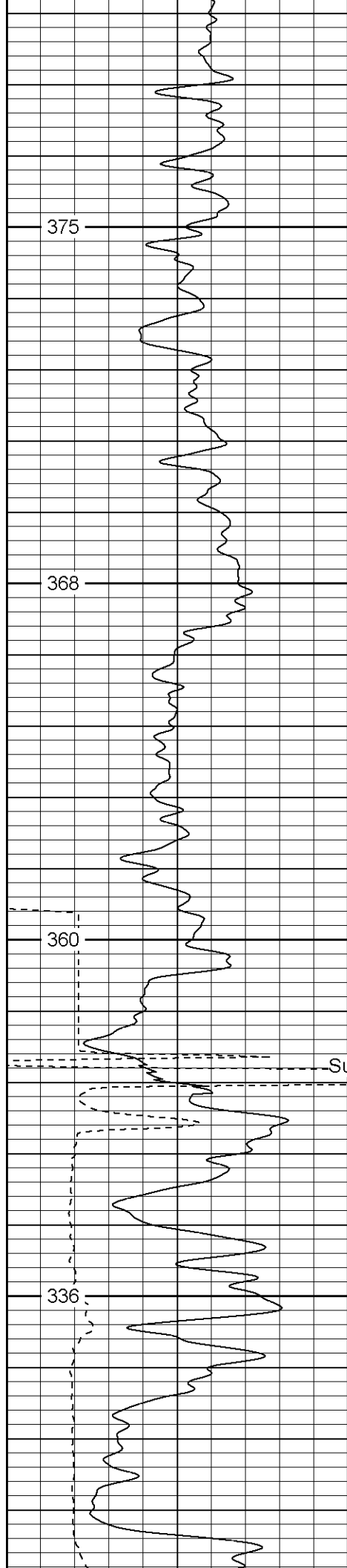
Database File: santafetr.db
Dataset Pathname: pass4.1
Presentation Format: cdnl
Dataset Creation: Tue Mar 08 11:31:27 2005 by Calc Warrior 7.0 STD Ope
Charted by: Depth in Feet scaled 1:240

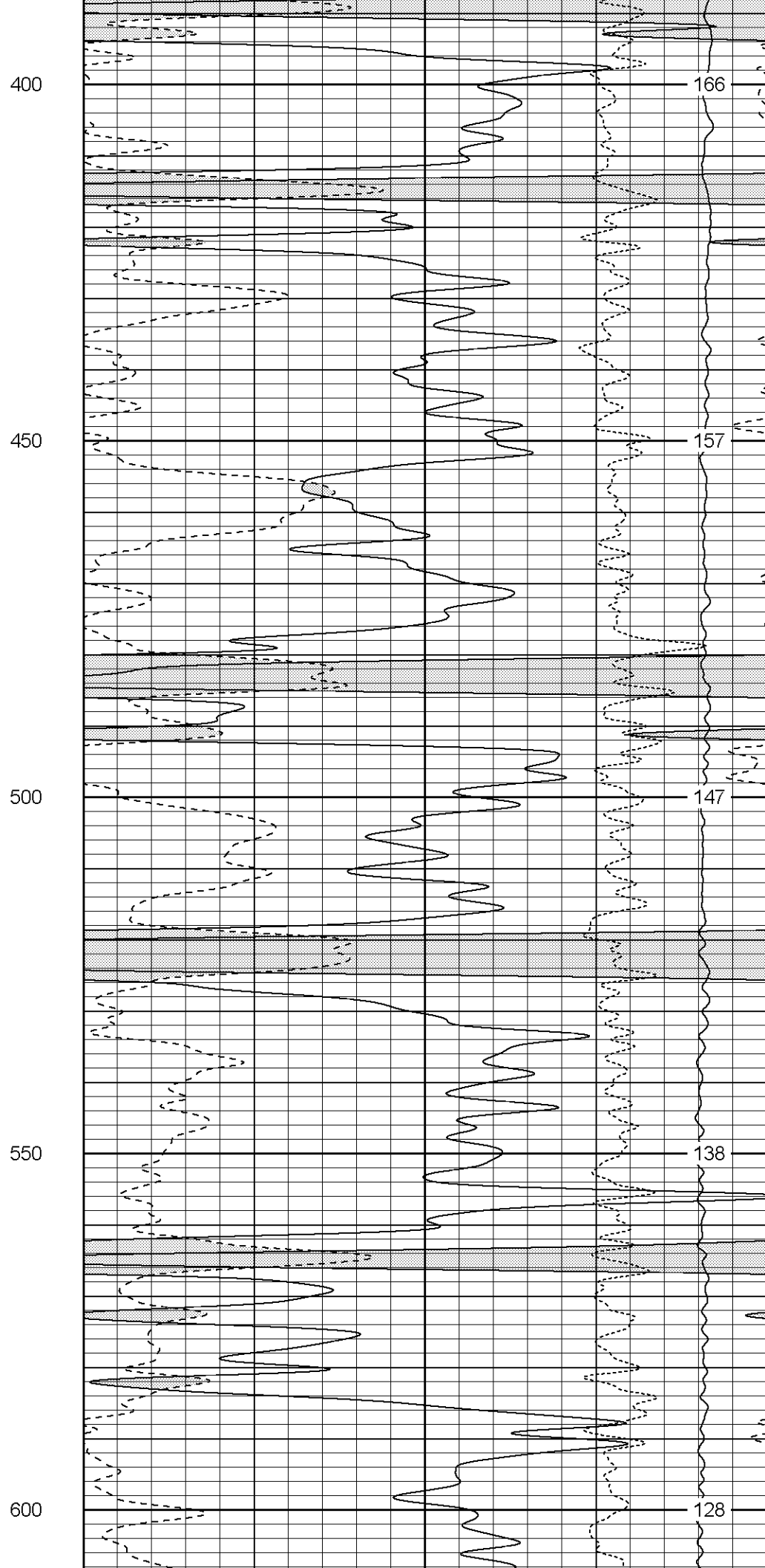
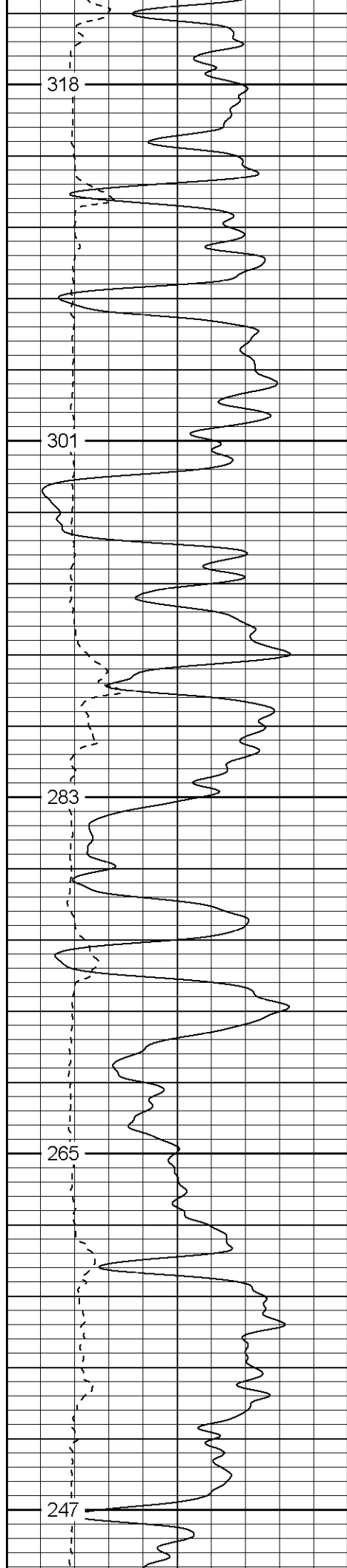
0	GR (GAPI)	200
6	DCAL (in)	16

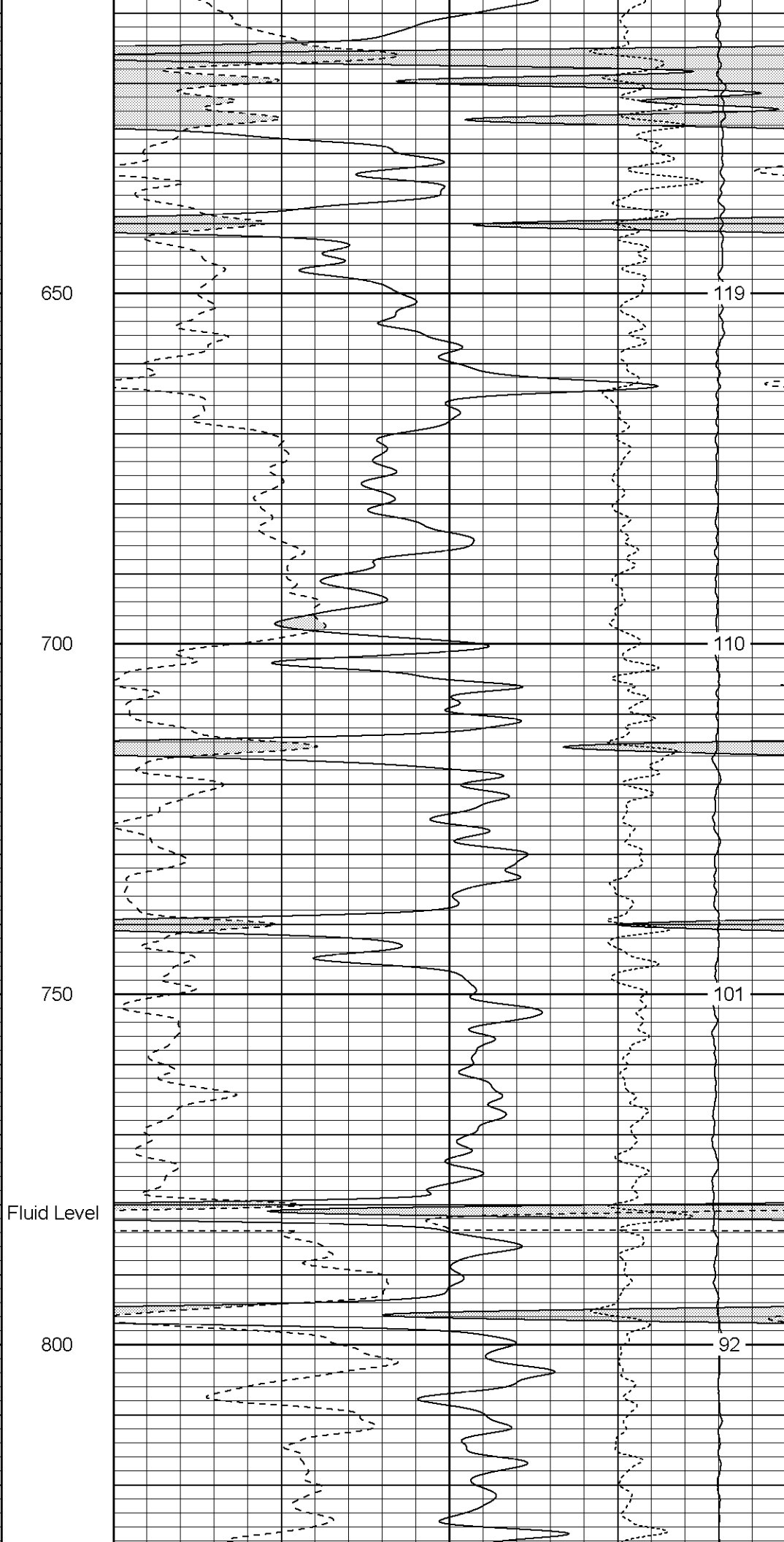
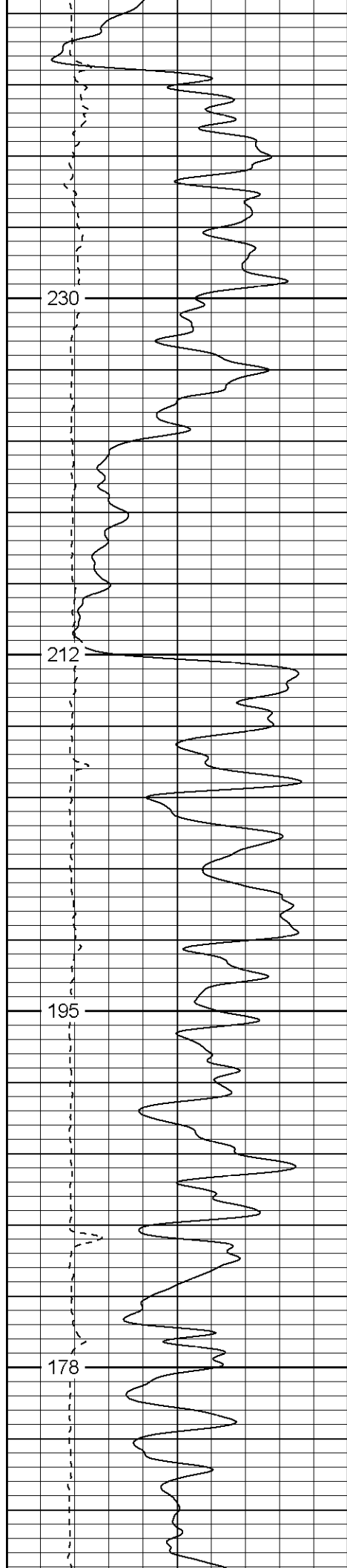
30	NPOR (pu)	-10
30	DPOR (pu)	-10

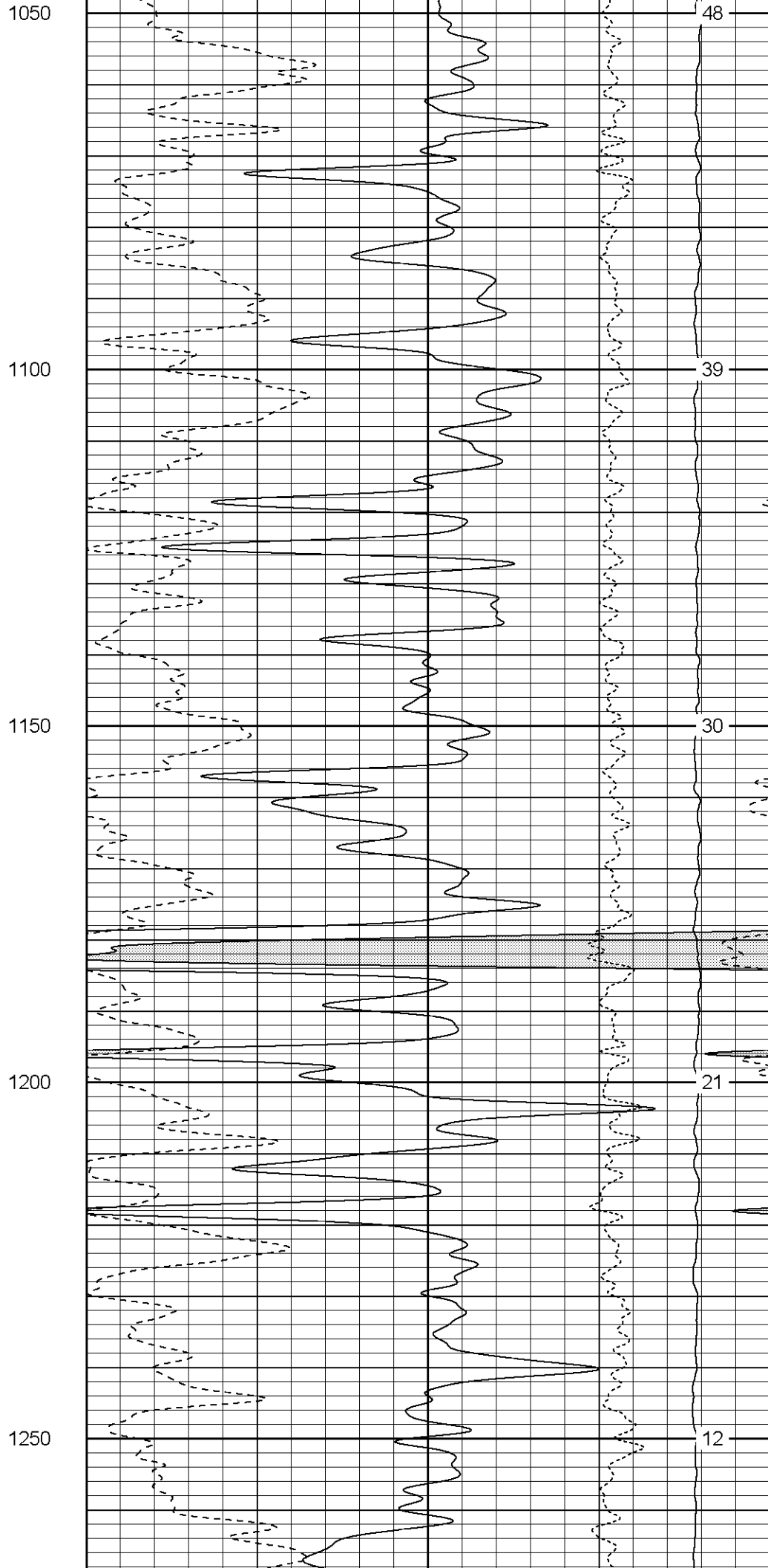
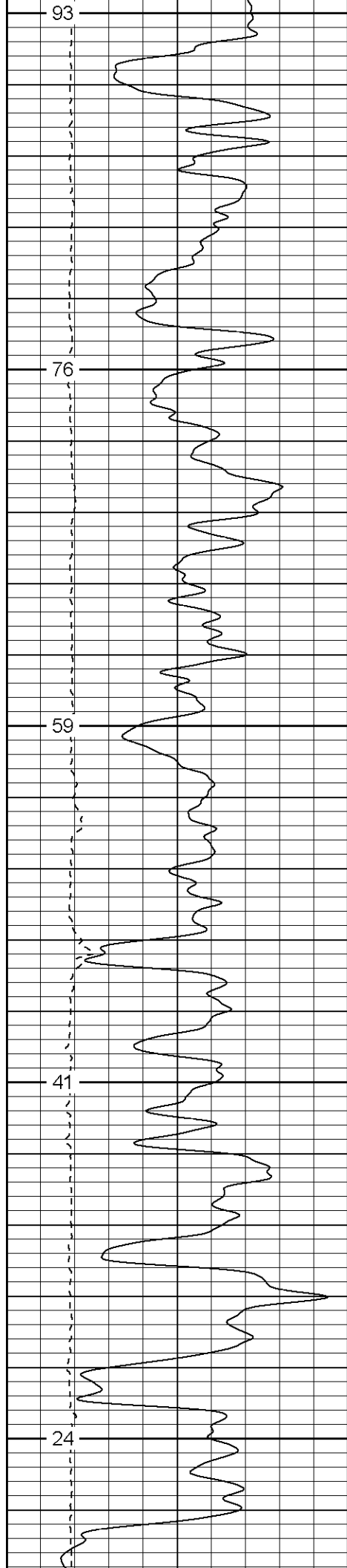
-0.5	RHOC (g/cc)	0.5
4000	LTEN (lb)	0

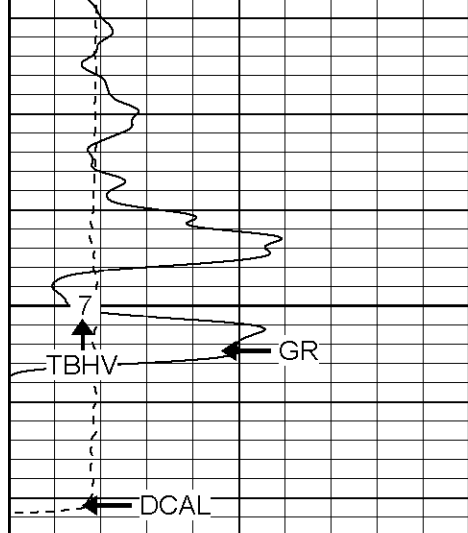






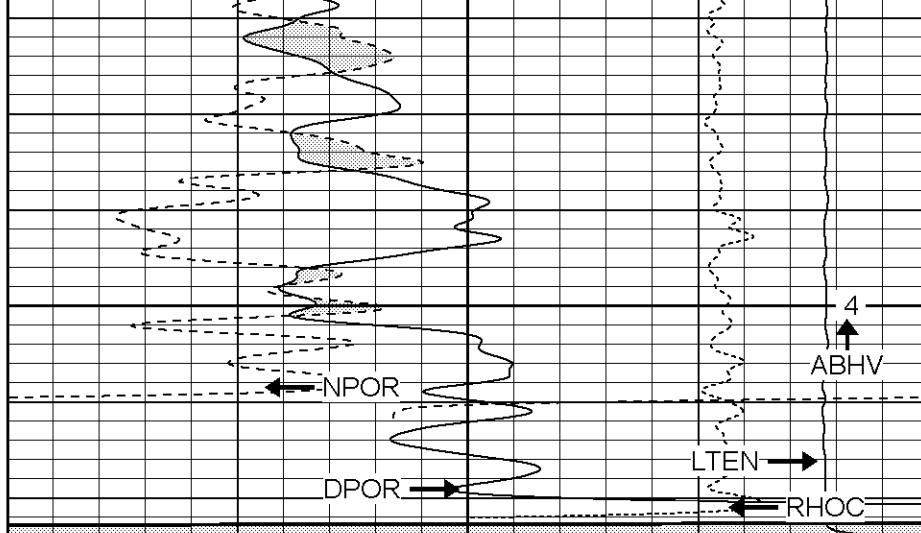






0	GR (GAPI)	200
6	DCAL (in)	16

1300



30	NPOR (pu)	-10
30	DPOR (pu)	-10
-0.5	RHOC (g/cc)	0.5
4000	LTEN (lb)	0

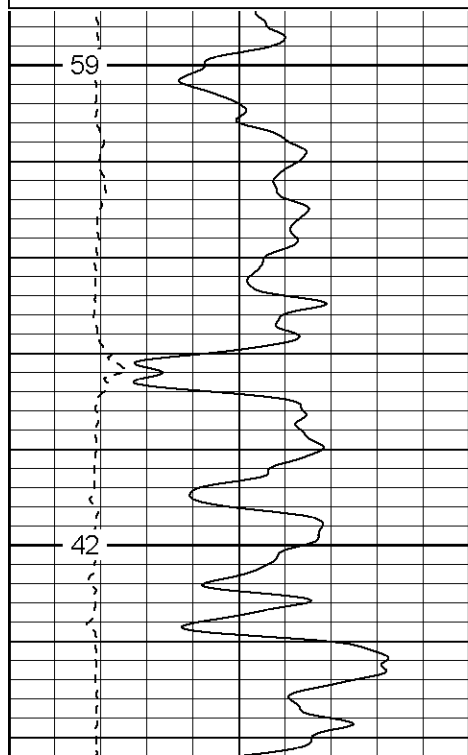
Patterson

Repeat Section

Database File: santafetr.db
 Dataset Pathname: pass3.1
 Presentation Format: cdnl
 Dataset Creation: Tue Mar 08 10:41:42 2005 by Calc Warrior 7.0 STD Ope
 Charted by: Depth in Feet scaled 1:240

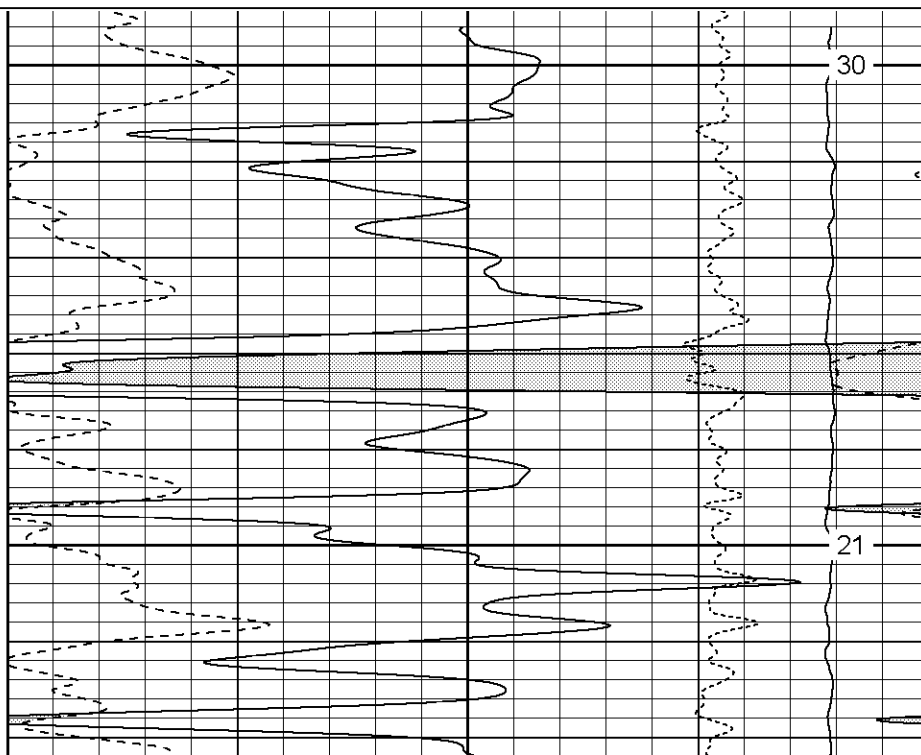
0	GR (GAPI)	200
6	DCAL (in)	16

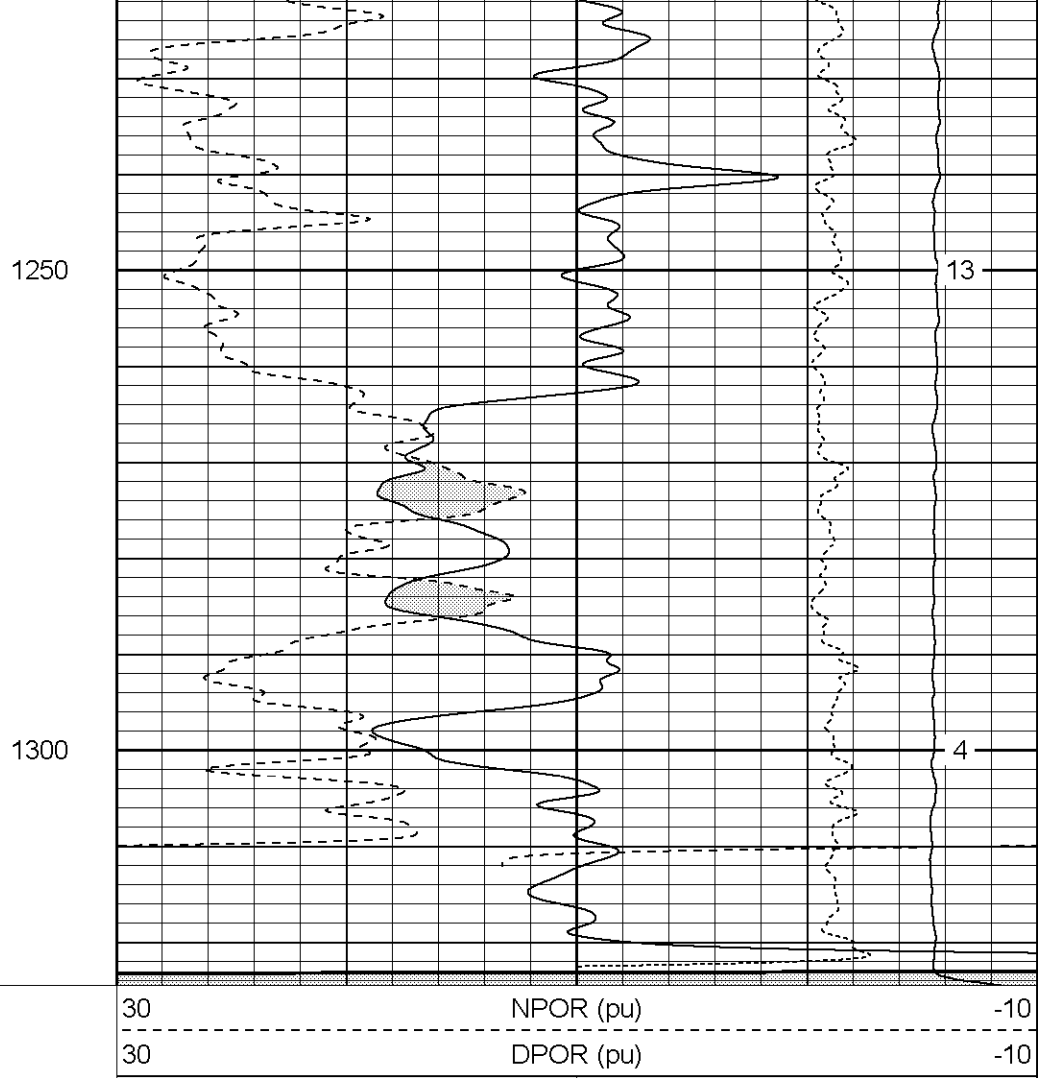
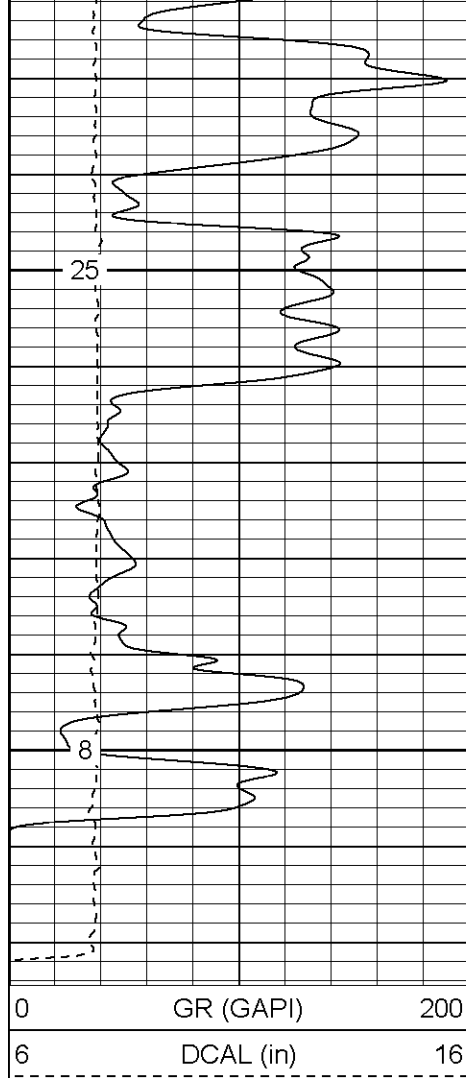
30	NPOR (pu)	-10
30	DPOR (pu)	-10
-0.5	RHOC (g/cc)	0.5
4000	LTEN (lb)	0



1150

1200





-0.5	RHOC (g/cc)	0.5
4000	LTEN (lb)	0

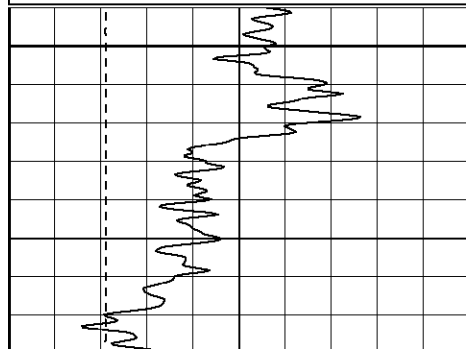
Patterson

High Resolution Pass

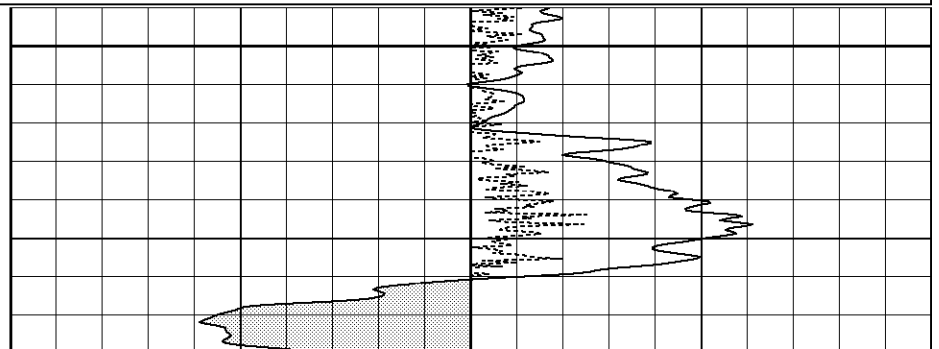
Database File: santafetr.db
 Dataset Pathname: pass4.2
 Presentation Format: cdlhr
 Dataset Creation: Tue Mar 08 11:38:39 2005 by Calc Warrior 7.0 STD Ope
 Charted by: Depth in Feet scaled 1:120

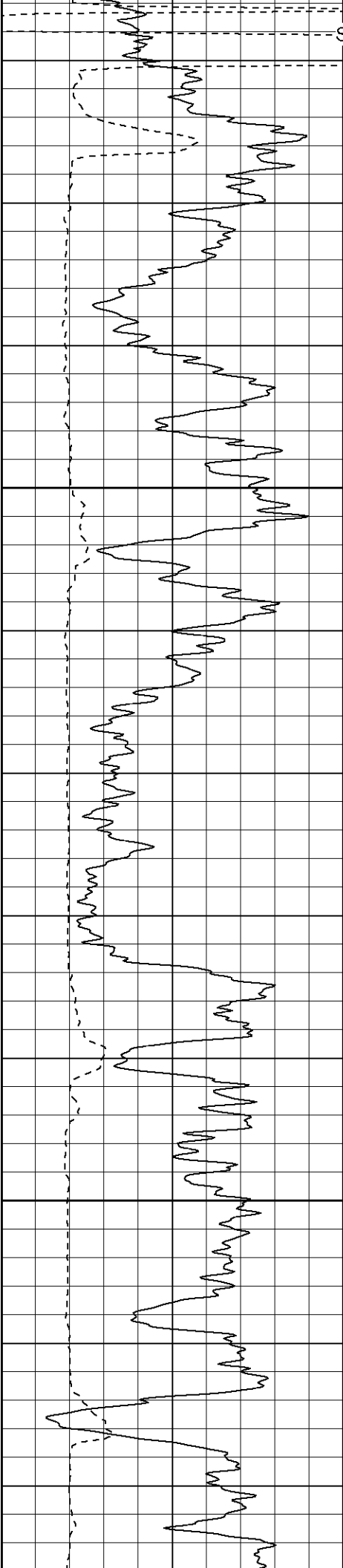
0	GR (GAPI)	200
6	DCAL (in)	16

1	RHOB (g/cc)	3
-0.5	RHOC (g/cc)	0.5



300

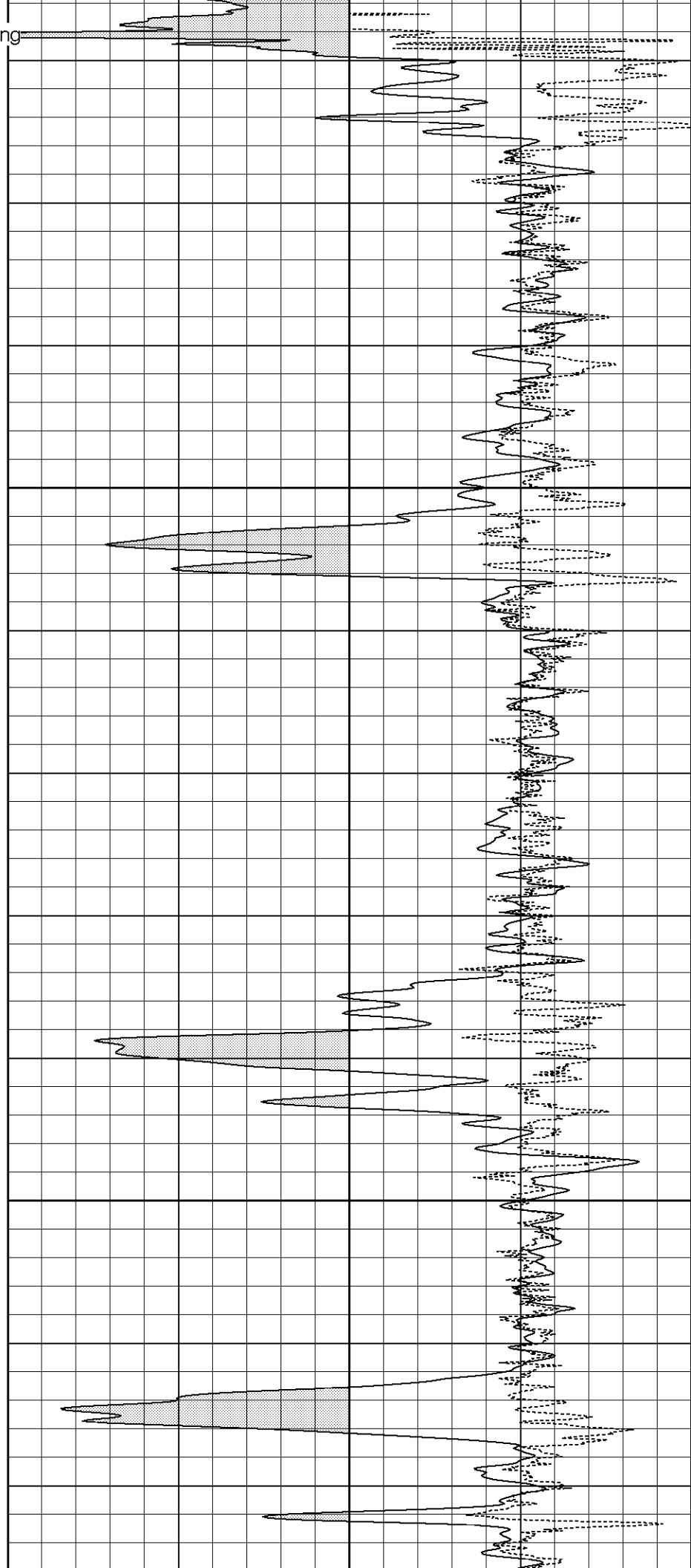


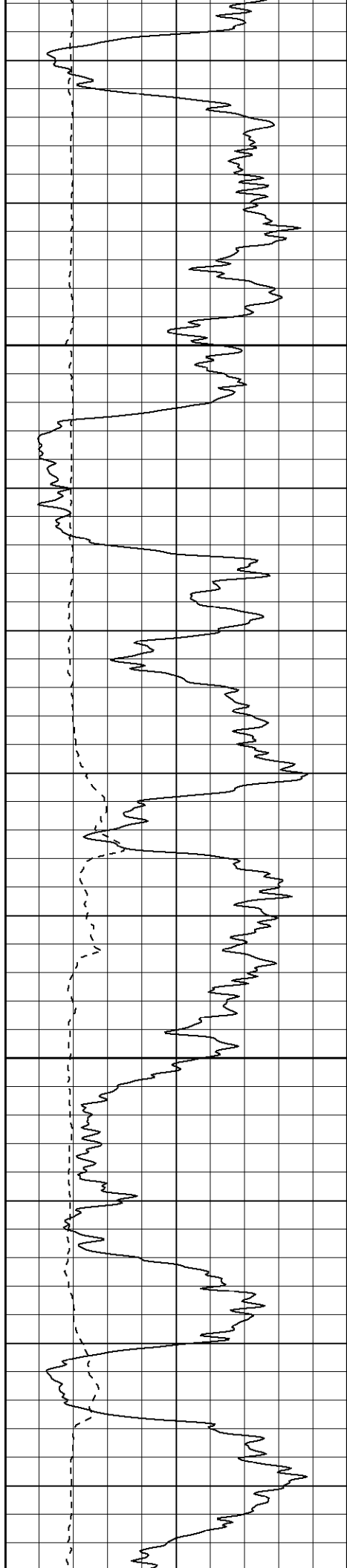


Surface Casing

350

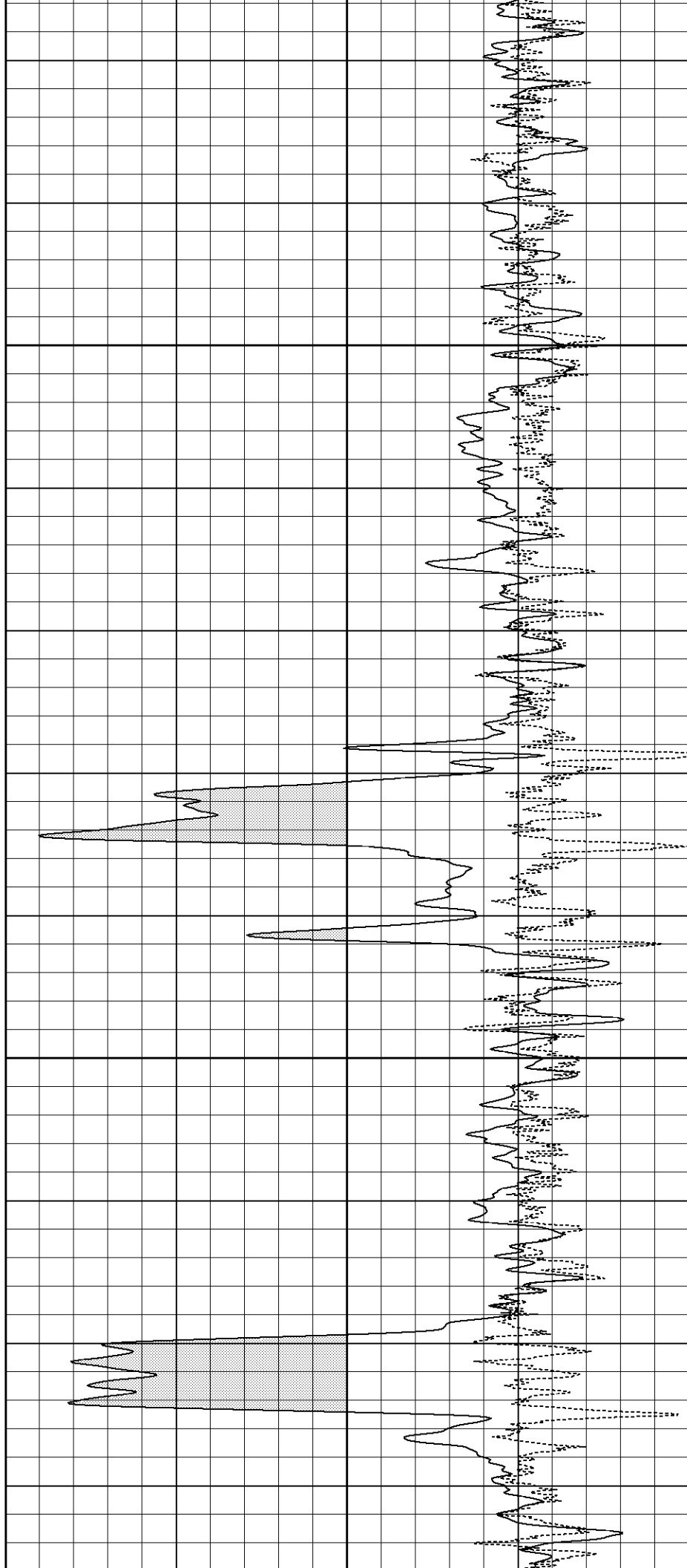
400

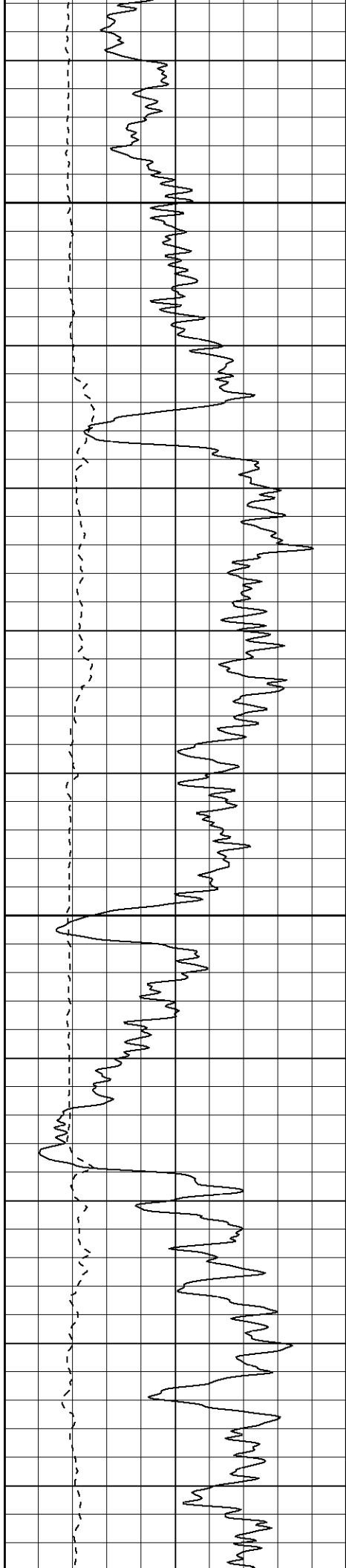




450

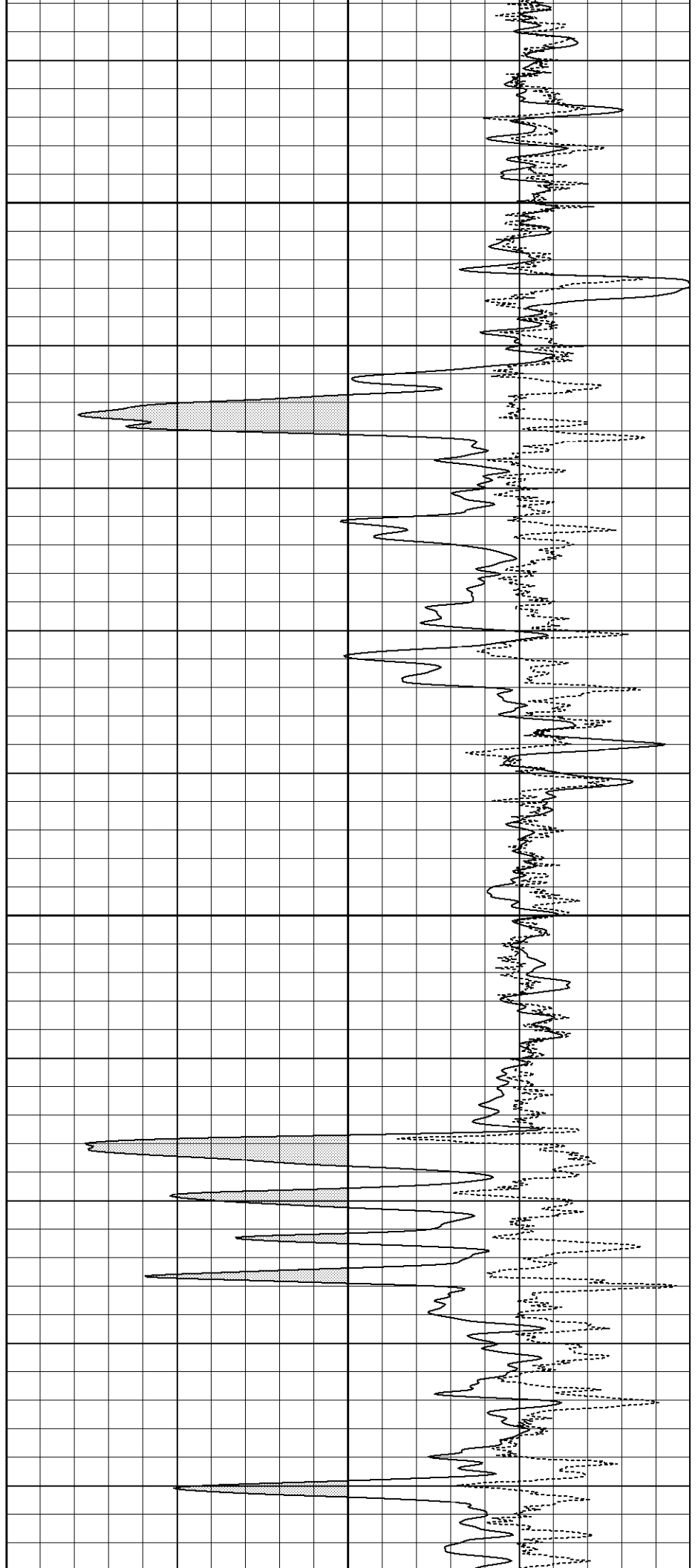
500

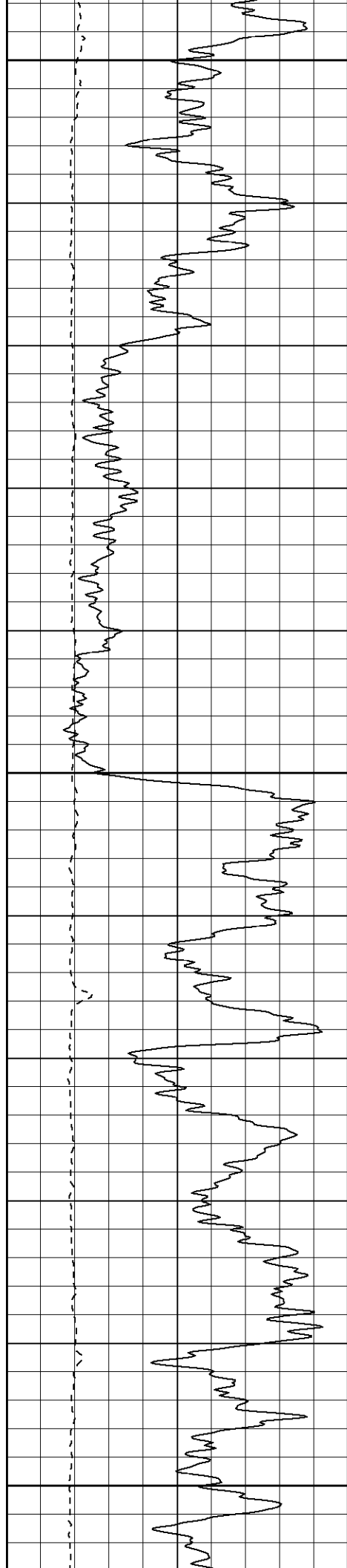




550

600

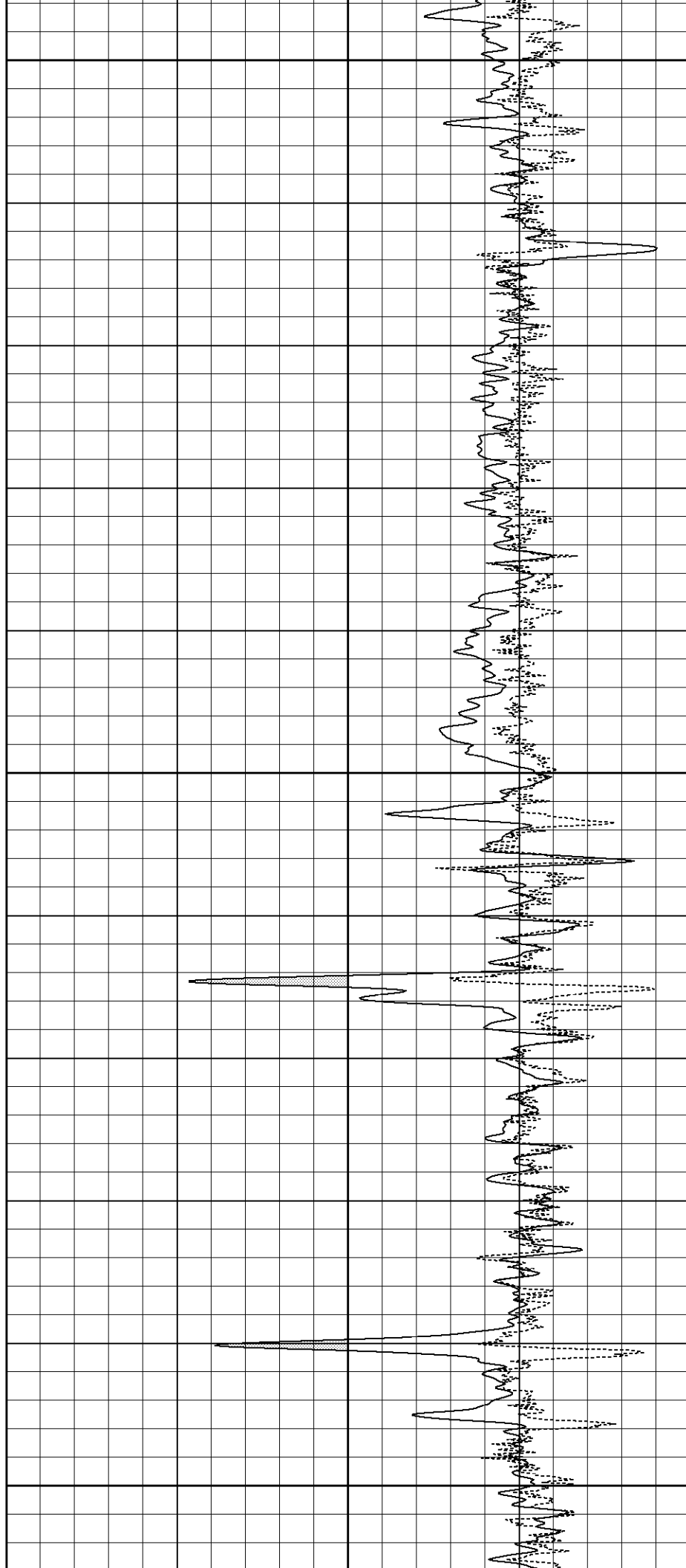


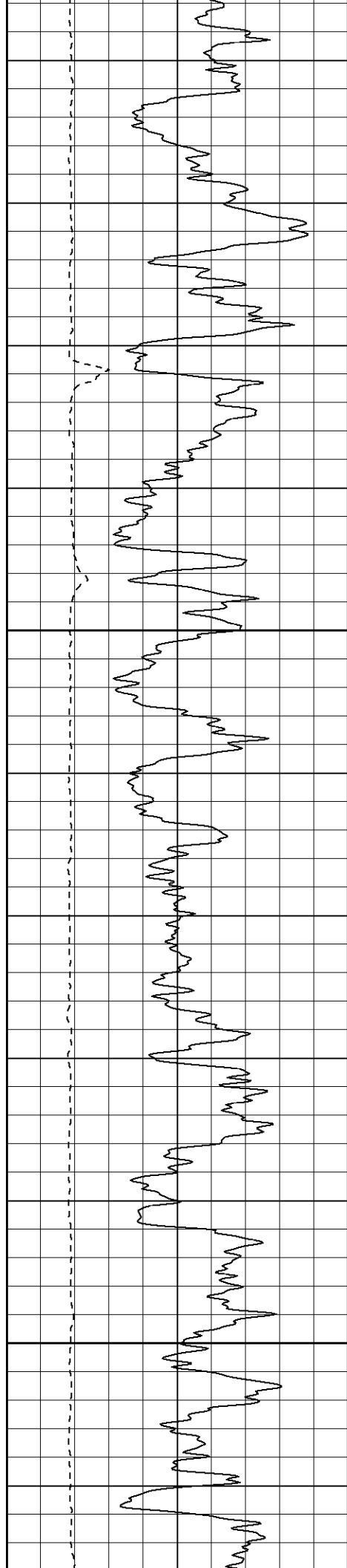


650

700

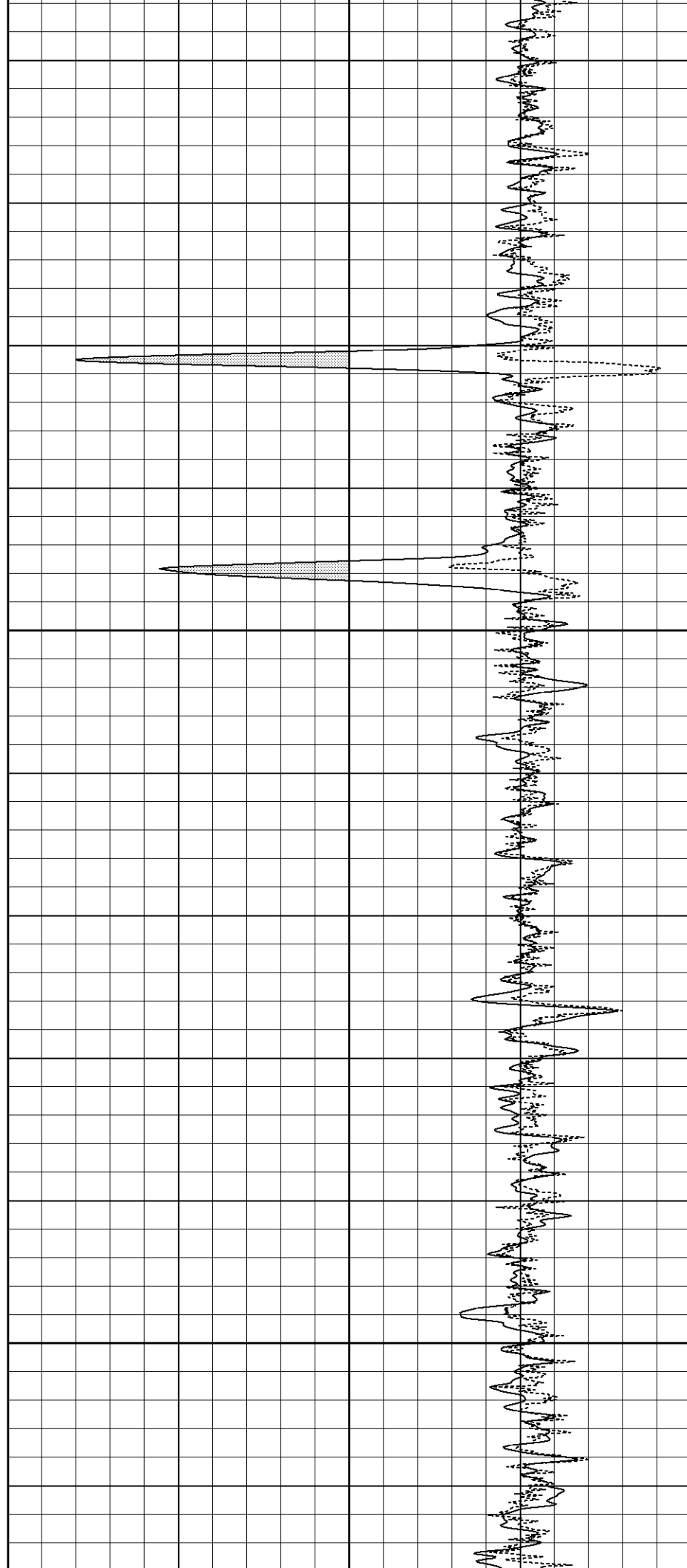
750

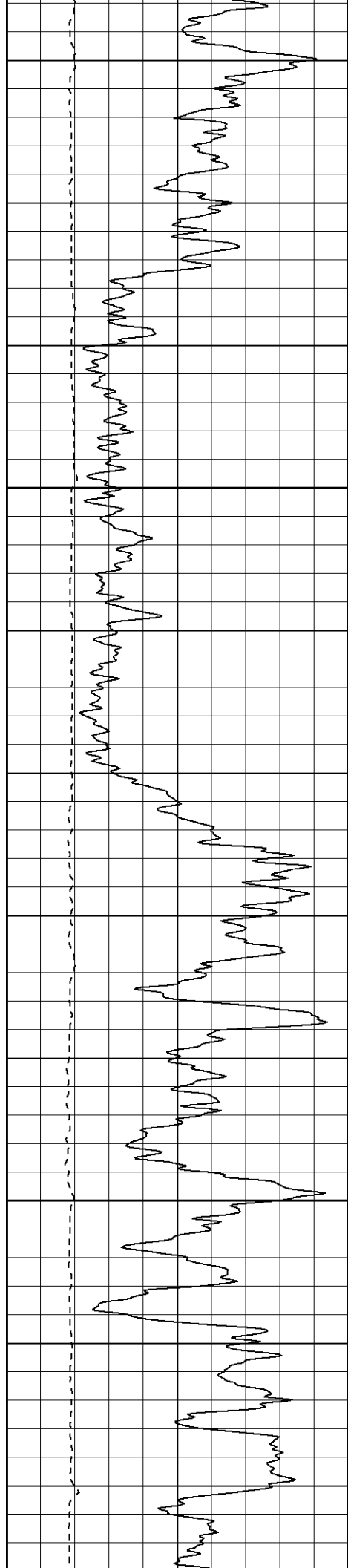




800

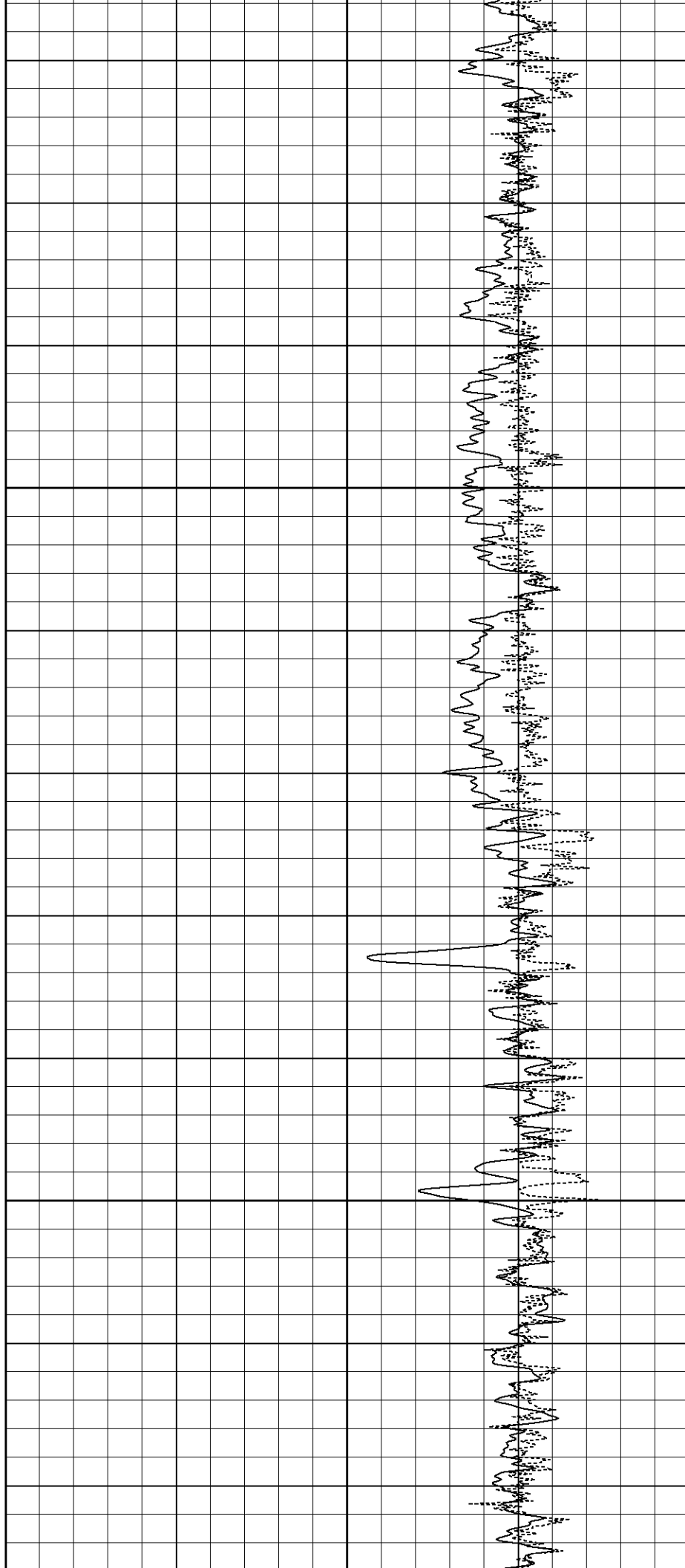
850

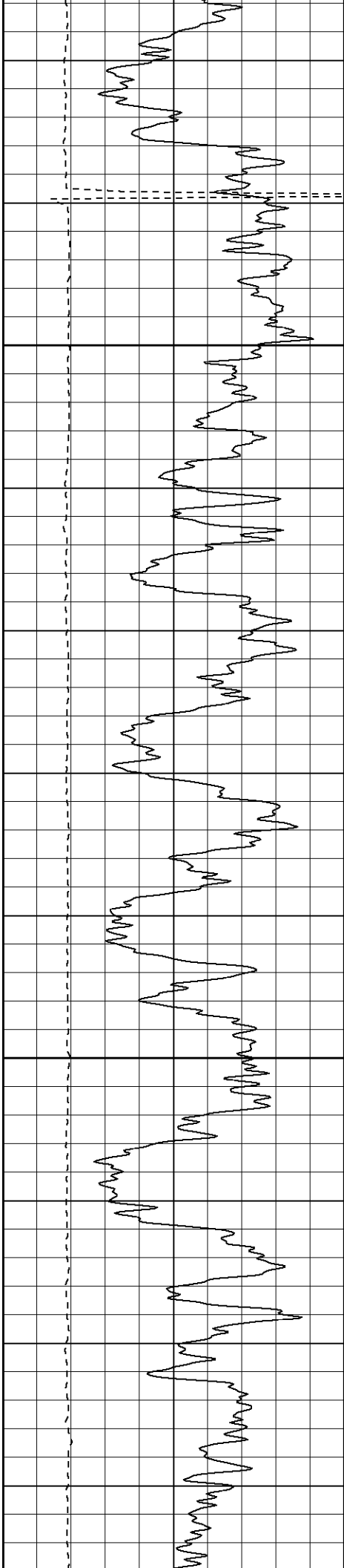




900

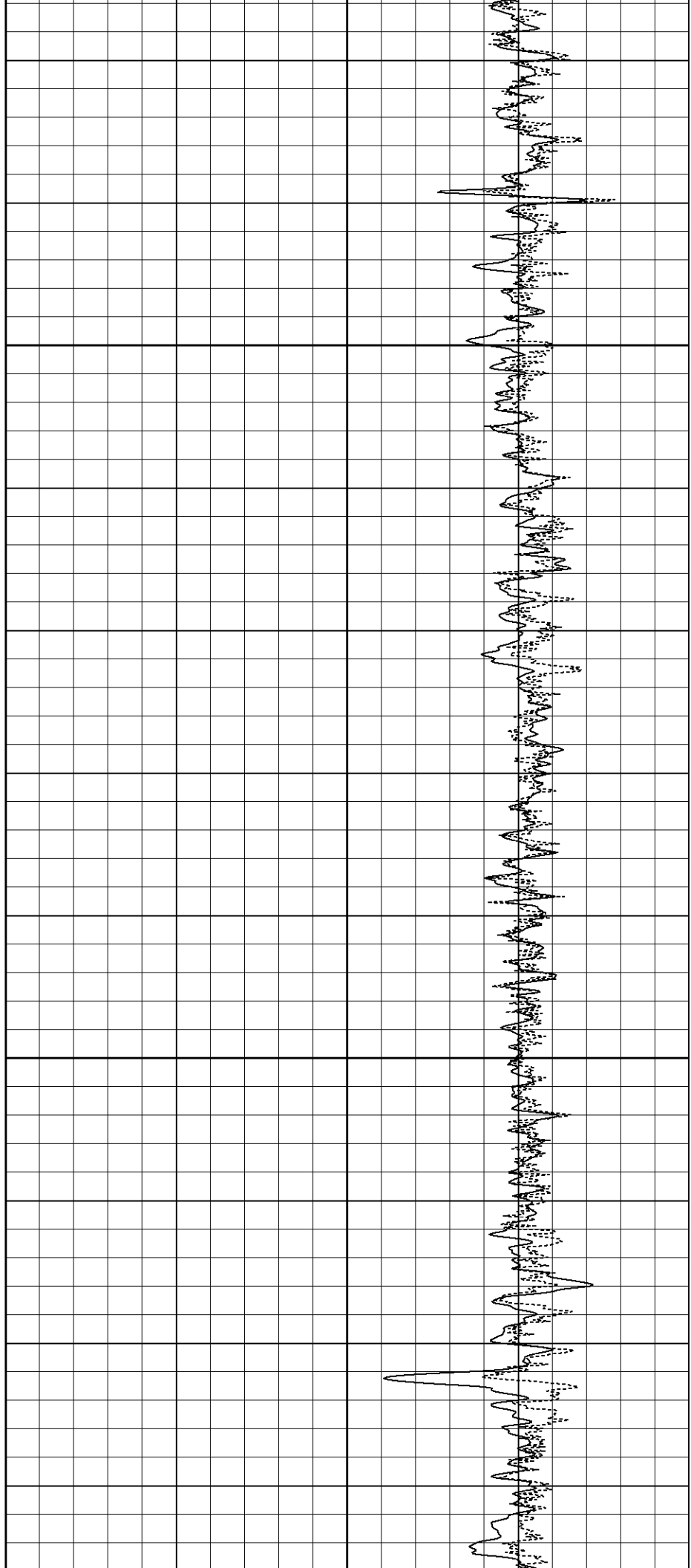
950

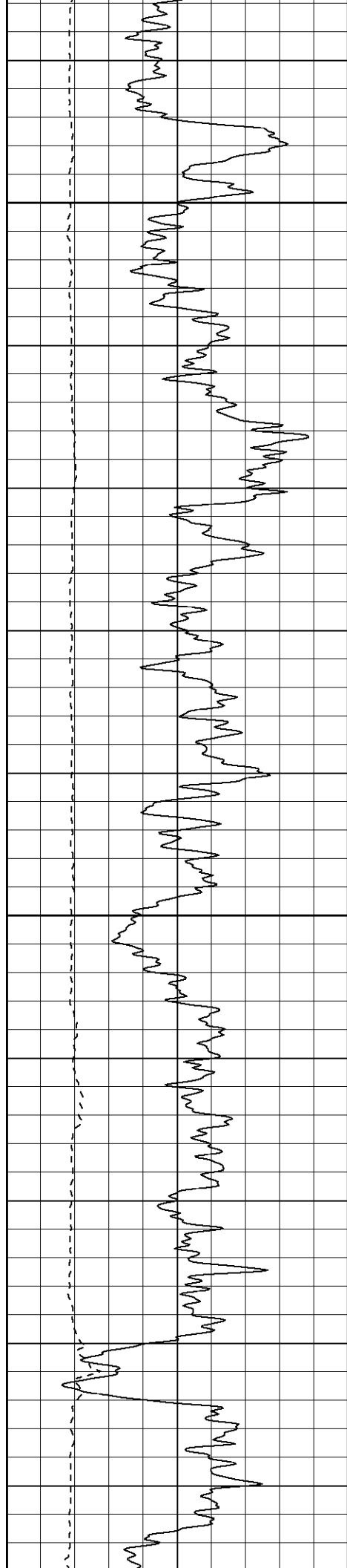




1000

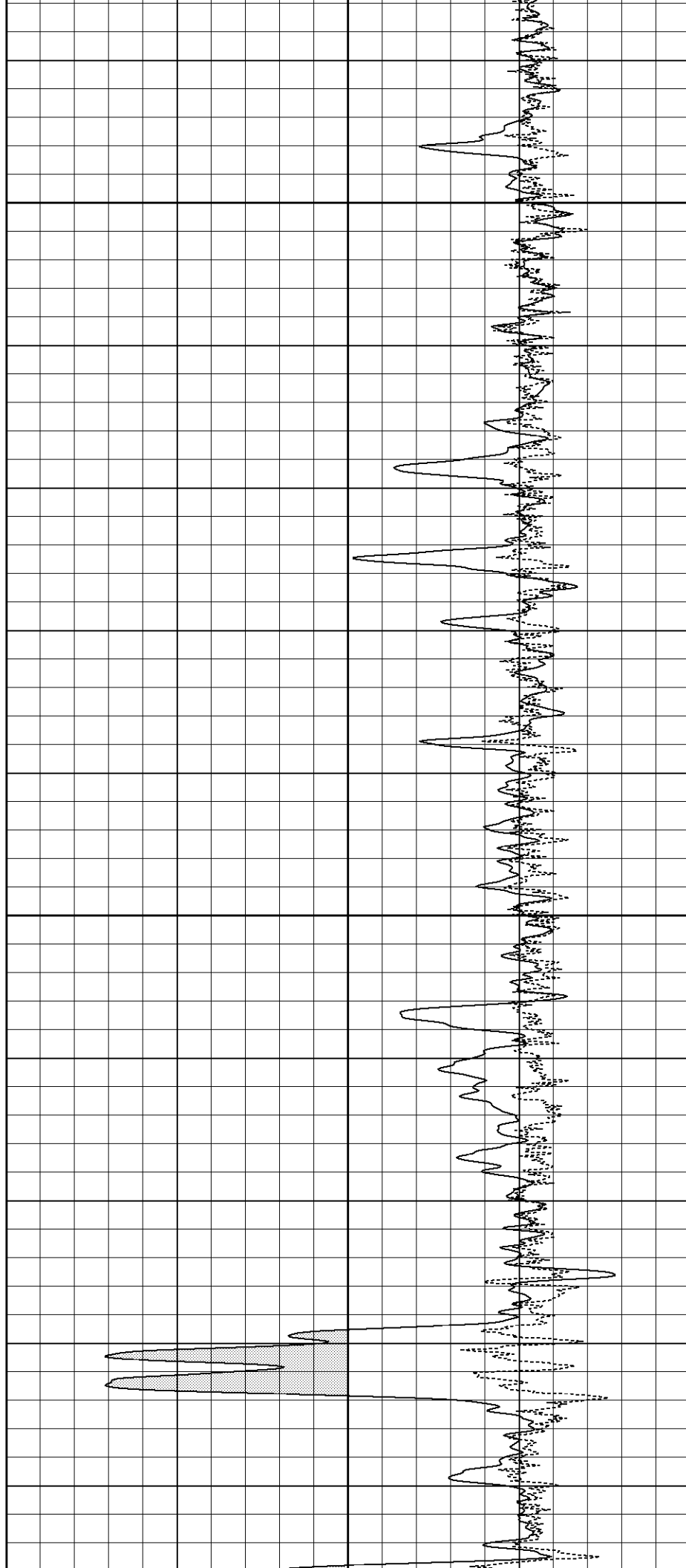
1050

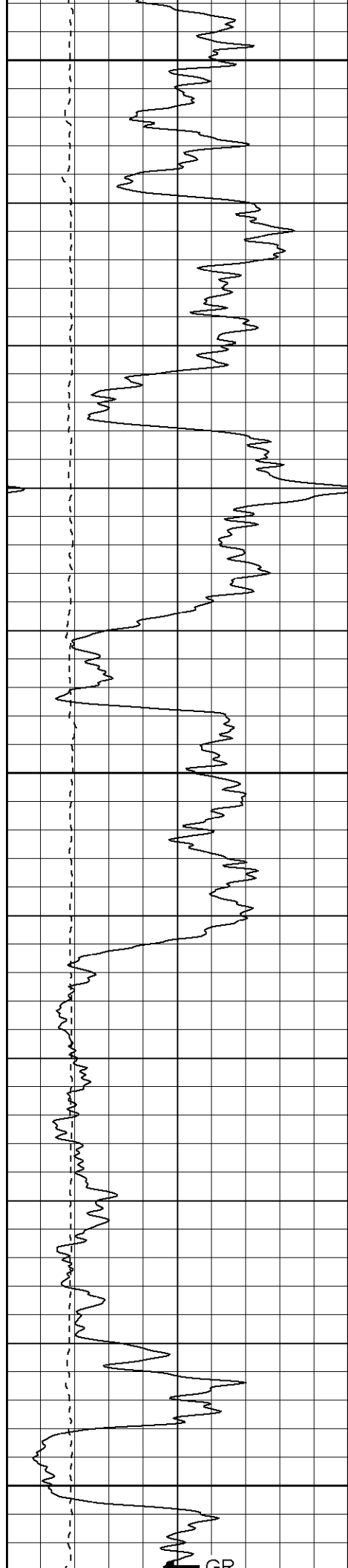




1100

1150

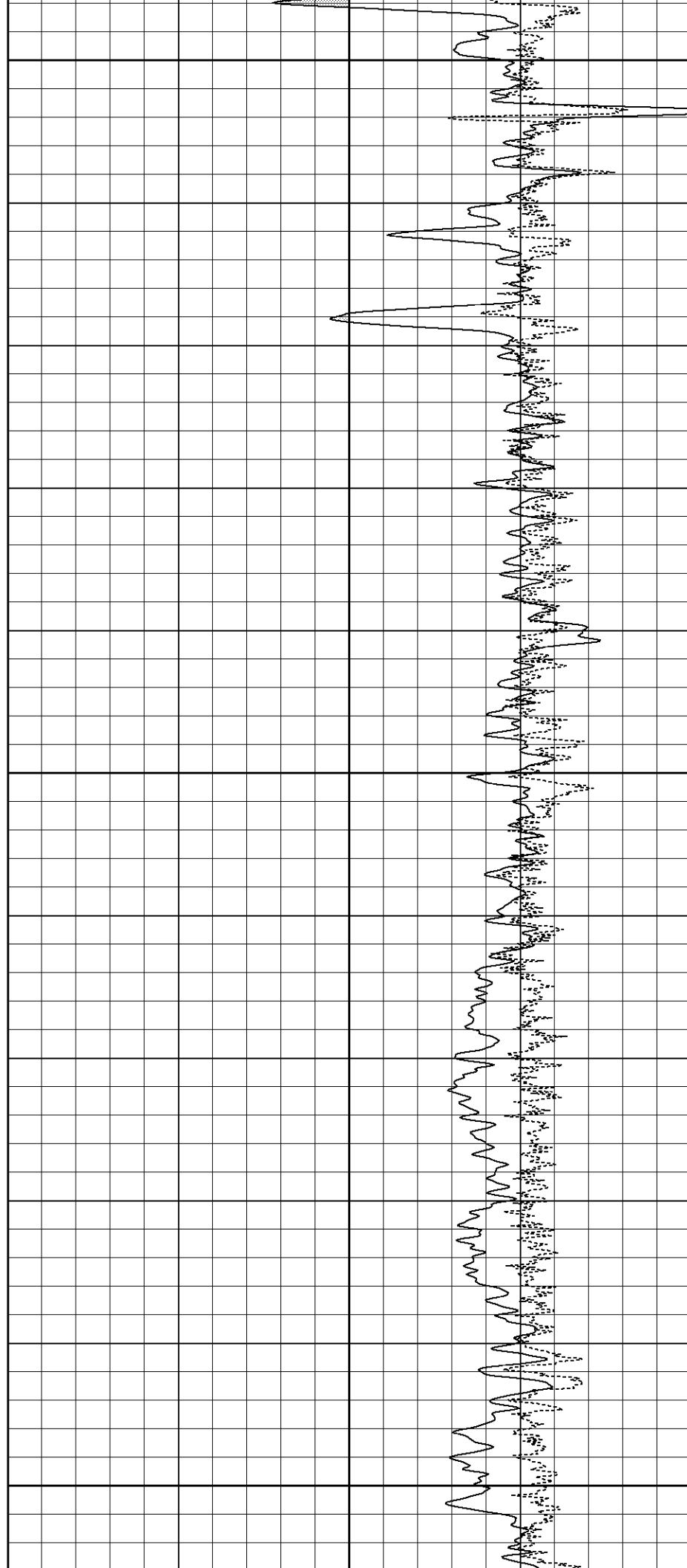


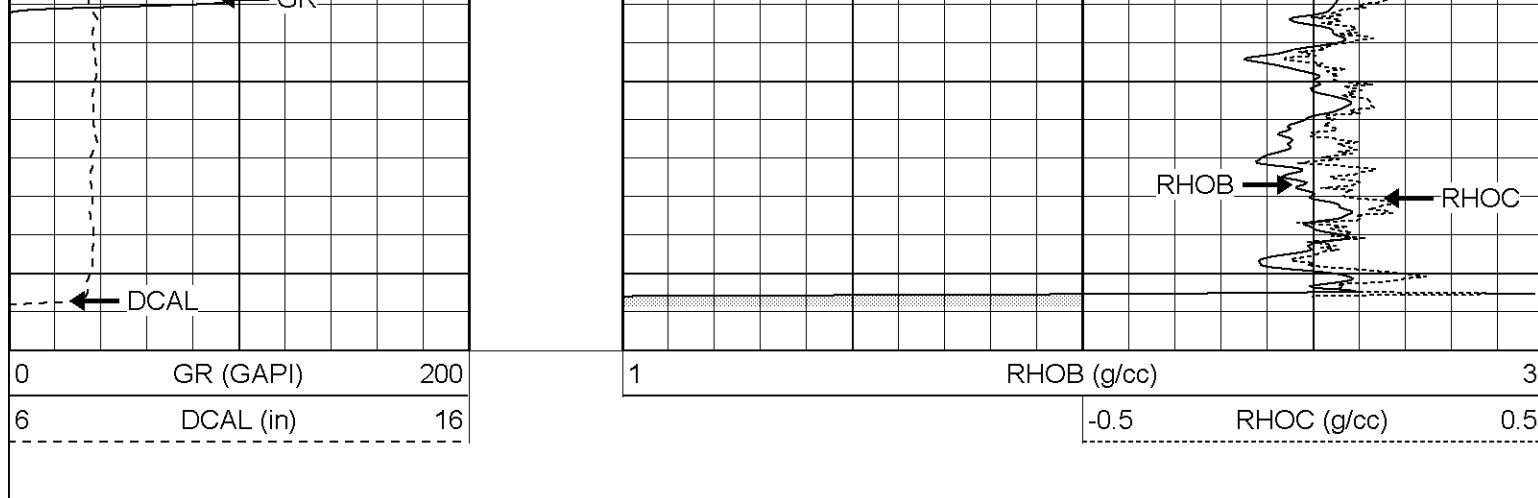


1200

1250

1300





Compensated Density Calibration Report

Serial-Model: 2388-G
 Source / Verifier: csv-j12 / blocks
 Master Calibration Performed: Sat Jan 29 09:50:08 2005

Master Calibration

	Density		Far Detector	Near Detector	
Magnesium	1.710	g/cc	728.54	413.56	cps
Aluminum	2.540	g/cc	168.69	286.37	cps

Spine Angle = 75.90

Density/Spine Ratio = 0.550

	Size		Reading	
Small Ring	7.85	in	1.41	V
Large Ring	14.00	in	4.56	V

Gamma Ray Calibration Report

Serial Number: 2388OH
 Tool Model: D
 Performed: Thu Jan 27 08:00:23 2005

Calibrator Value: 170.0 GAPI

Background Reading: 55.0 cps
 Calibrator Reading: 201.0 cps

Sensitivity: 0.6000 GAPI/cps


Neutron Calibration Report

Serial Number: 5138
 Tool Model: G
 Performed: Mon Feb 21 14:49:11 2005

Calibrator Value: 1 NAPI

Calibrator Reading: 1 cps

Sensitivity: 1 NAPI/cps

Sensor	Offset (ft)	Schematic	Description	Len (ft)	OD (in)	Wt (lb)
CHD	15.92		None	0.75	1.50	5.00

	Length ft	O.D. in	Weight lb
NEU	14.12		
GR	8.92		
LSD	2.83		
DCAL	2.50		
SSD	2.25		
Dataset: /field/well/run1/_plots/_jobs_/cdl Total Length: 15.92 ft Total Weight: 365.00 lb O.D.: 4.00 in			