

Patterson

CEMENT
BOND
LOG

Company Pioneer Natural Resources
Well Black Rabbit 42-20 R
Field Purgatorie River
County Las Animas State Colorado

Location: API # : 05 071 08569 00
1556' FNL & 976' FEL
Other Services
DEV.
Survey
Permanent Datum SEC 20 TWP 32S RGE 65W
Log Measured From Ground Level Elevation 7352'
Drilling Measured From Kelly Bushing 4' Above G. L. K.B. 7356'
D.F. ---
G.L. 7352'

Date 10/27/05

Run Number	One	
Depth Driller	1790'	
Depth Logger	1760'	
Bottom Logged Interval	1756'	
Top Log Interval	Surface	
Open Hole Size	7 7/8"	
Type Fluid	Water	
Density / Viscosity	///	
Max. Recorded Temp.	106 Degrees	
Estimated Cement Top	Surface	
Time Well Ready	Portable Mast	
Time Logger on Bottom	3:20 P.M.	
Equipment Number	1036	
Location	Trinidad	
Recorded By	Buhr	
Witnessed By		

Borehole Record				Tubing Record			
Run Number	Bit	From	To	Size	Weight	From	To
Casing Record	Size	Wgt/Ft	Top	Bottom			
Surface String	8 5/8"		0	733'			
Prot. String							
Production String	5 1/2"		0	NA			
Liner							

<<< Fold Here >>>

All interpretations are opinions based on inferences from electrical or other measurements and we cannot and do not guarantee the accuracy or correctness of any interpretation, and we shall not, except in the case of gross or willful negligence on our part, be liable or responsible for any loss, costs, damages, or expenses incurred or sustained by anyone resulting from any interpretation made by any of our officers, agents or employees. These interpretations are also subject to our general terms and conditions set out in our current Price Schedule.

Comments

2 Degrees of Deviation

Bon Carbo Right At Post Office, Right At Tin Barn,
Second Left, First Location On Left.

Patterson

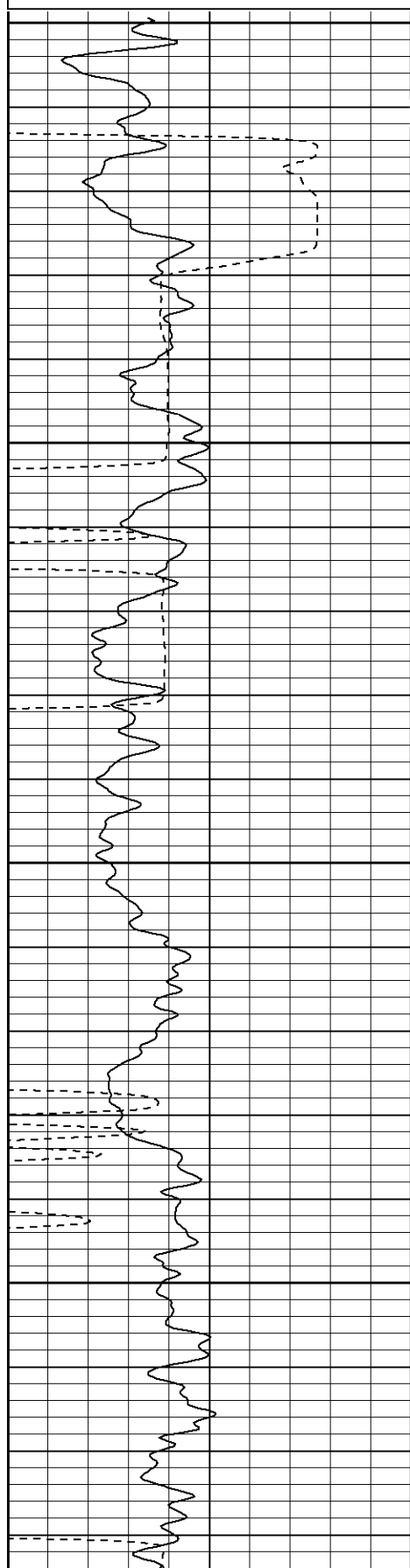
Main Pass

Database File: blavkrabbit4220rb.db
Dataset Pathname: pass2
Presentation Format: cbt2
Dataset Creation: Thu Oct 27 15:29:25 2005 by Log Warrior 7.0 STD Cas
Charted by: Depth in Feet scaled 1:240

0	GR (GAPI)	200
400	TT3 (usec)	200

0	Amplitude (mV)	100
18	Collar Locator	-2
200	CBL5	1200

200	variable density	1200
-----	------------------	------

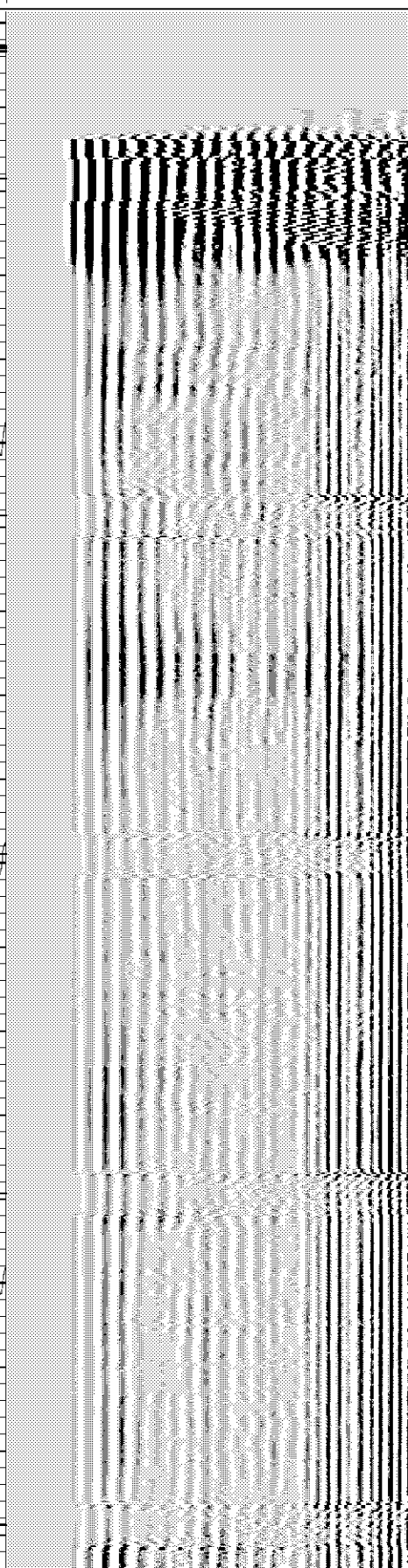
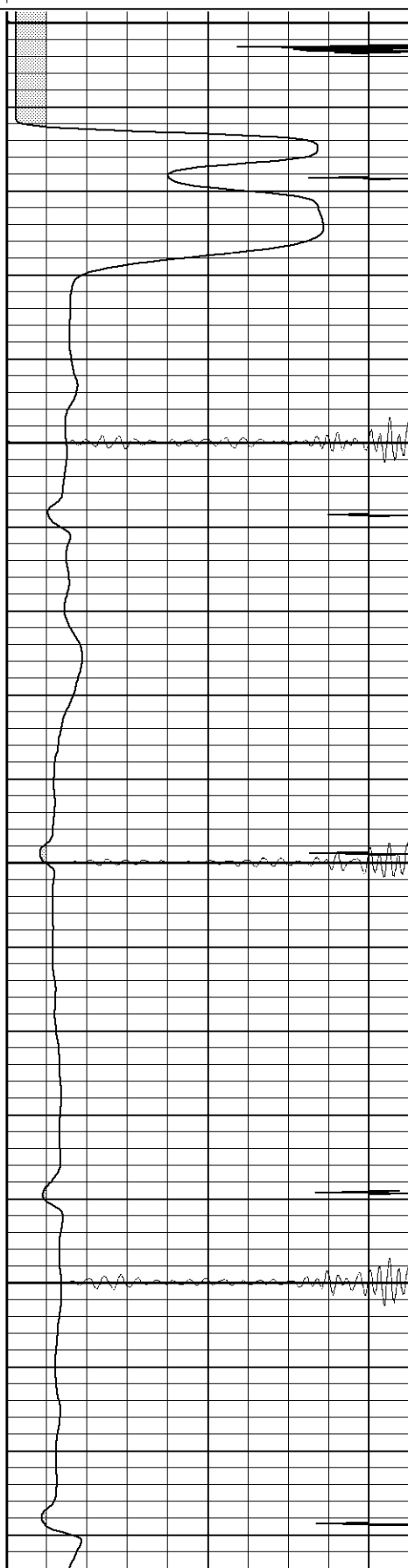


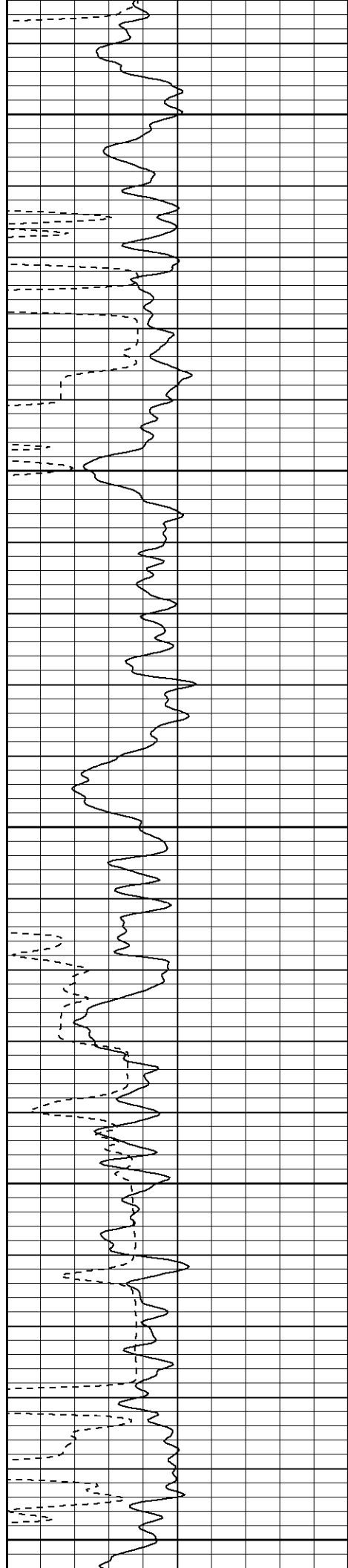
0
Fluid Level

50

100

150





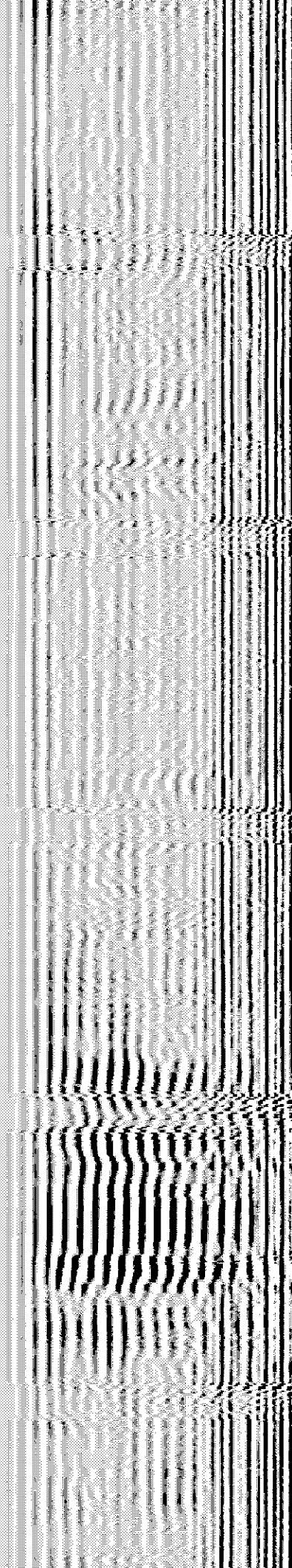
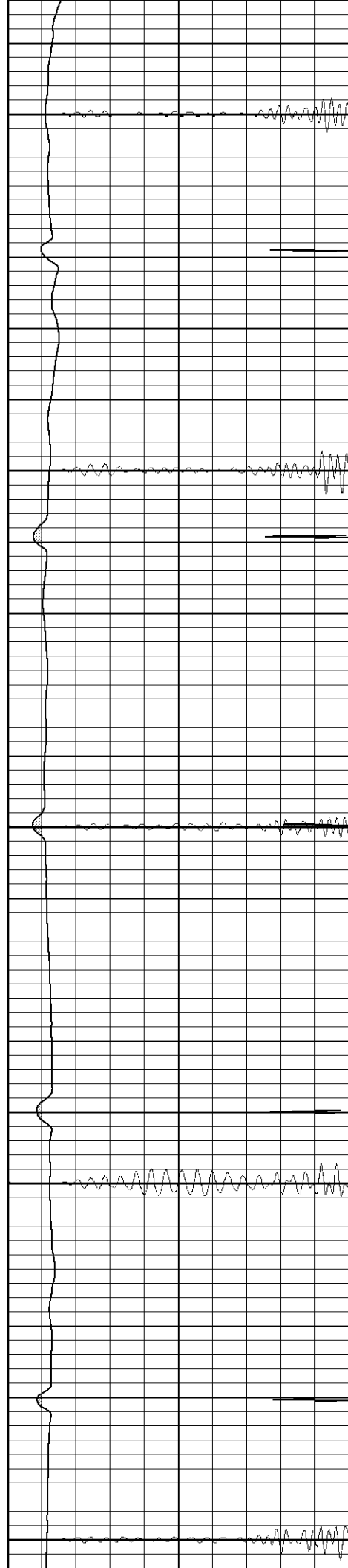
200

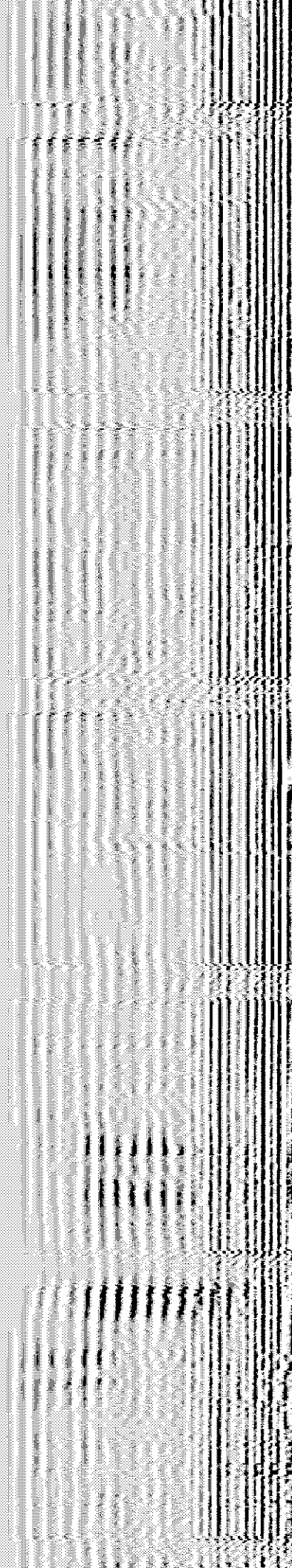
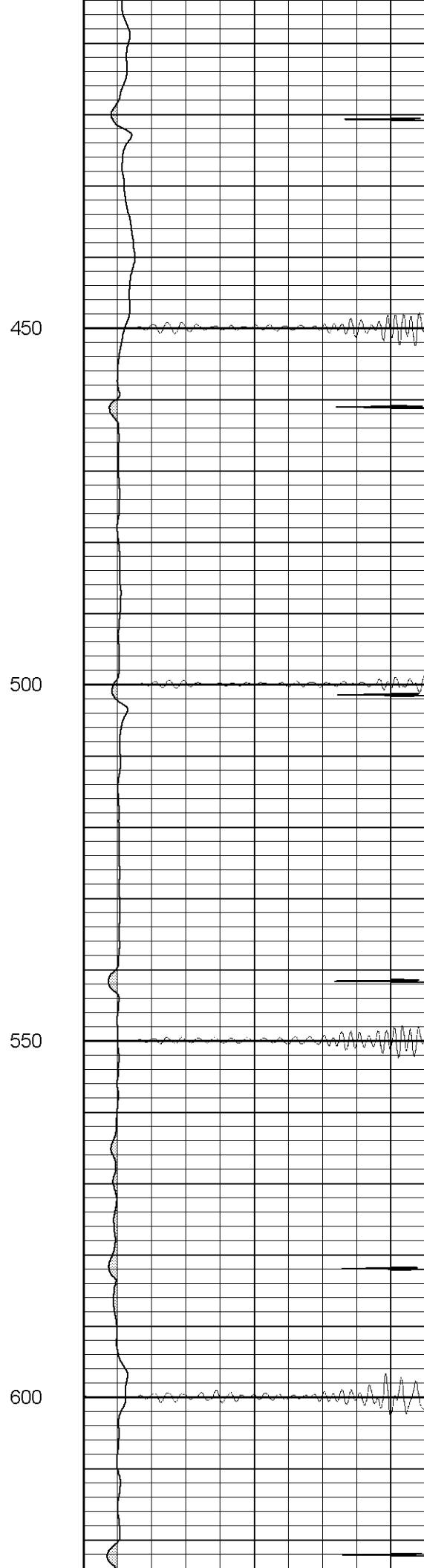
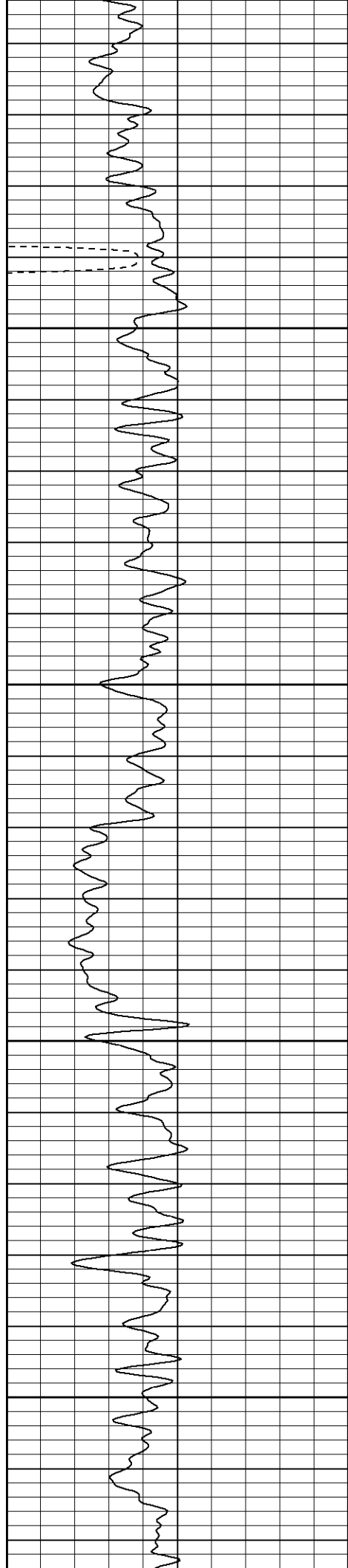
250

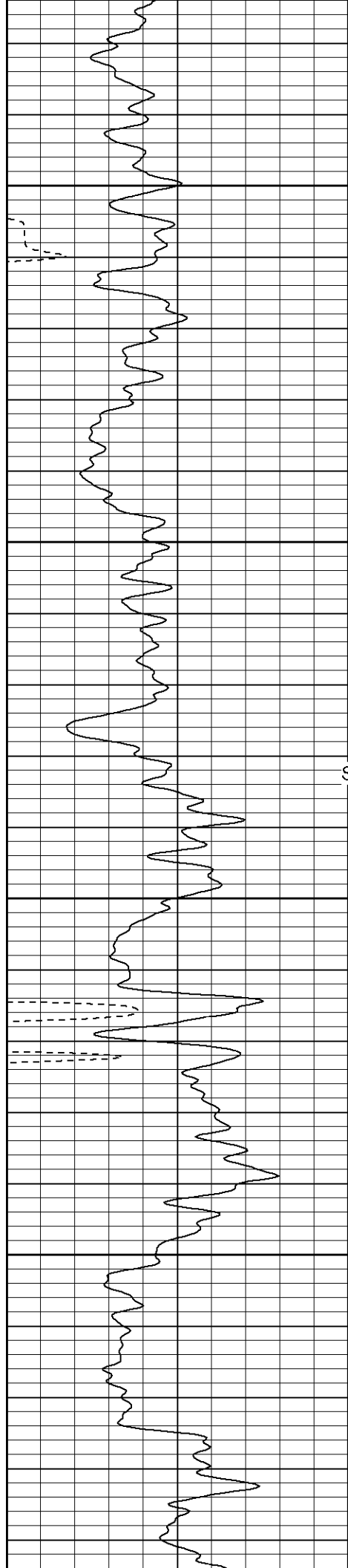
300

350

400







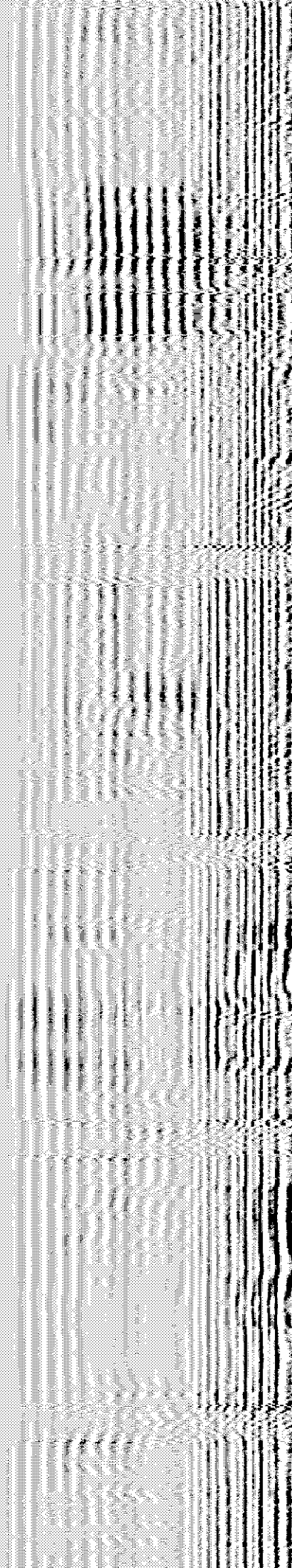
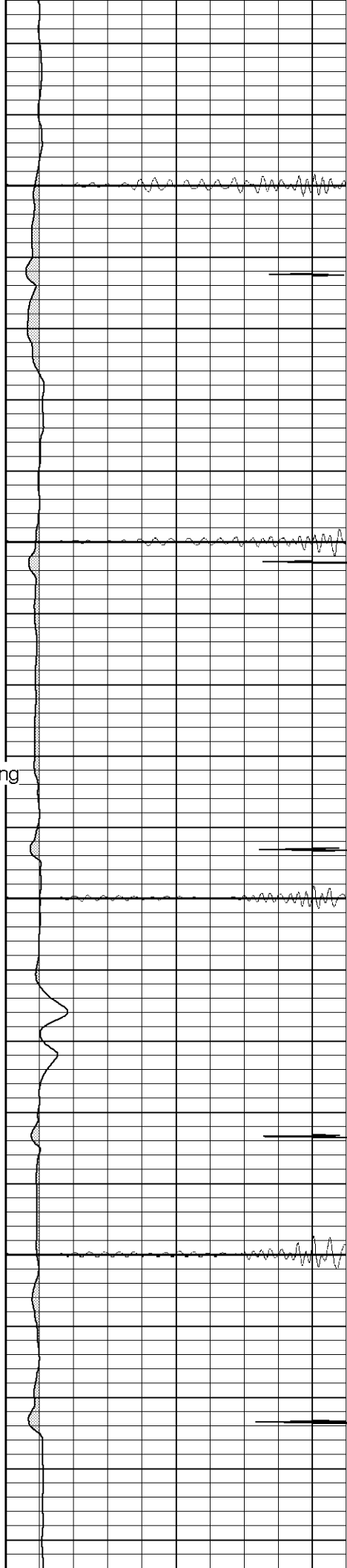
Surface Casing

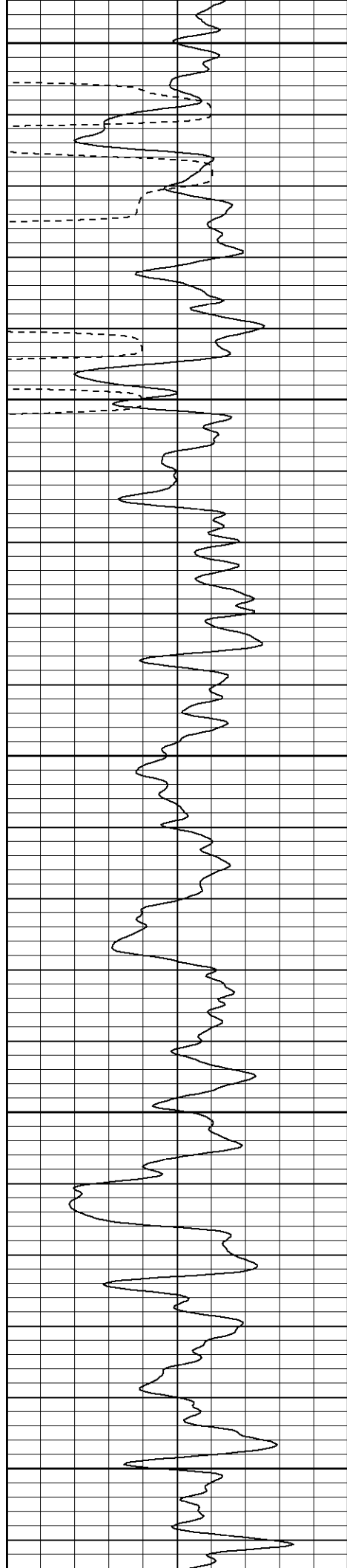
650

700

750

800





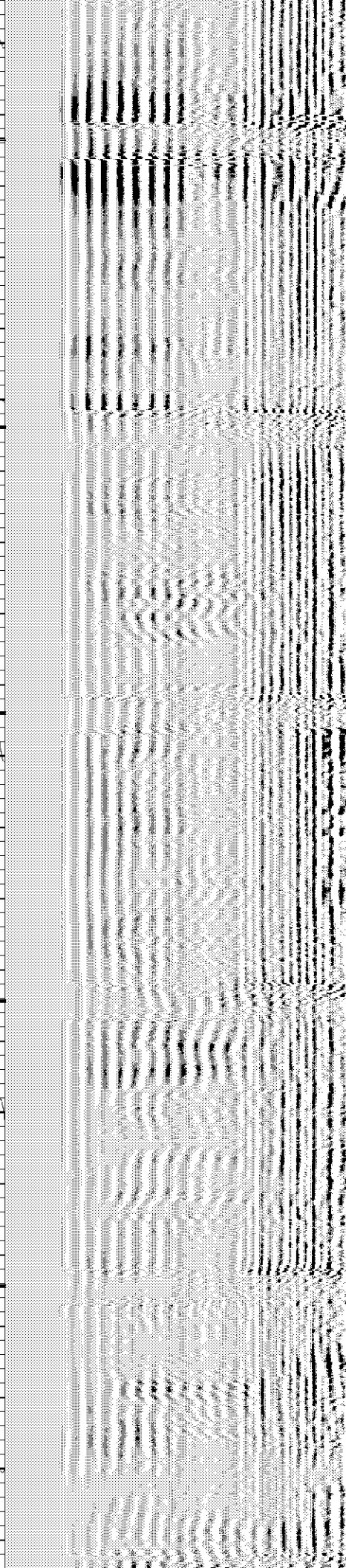
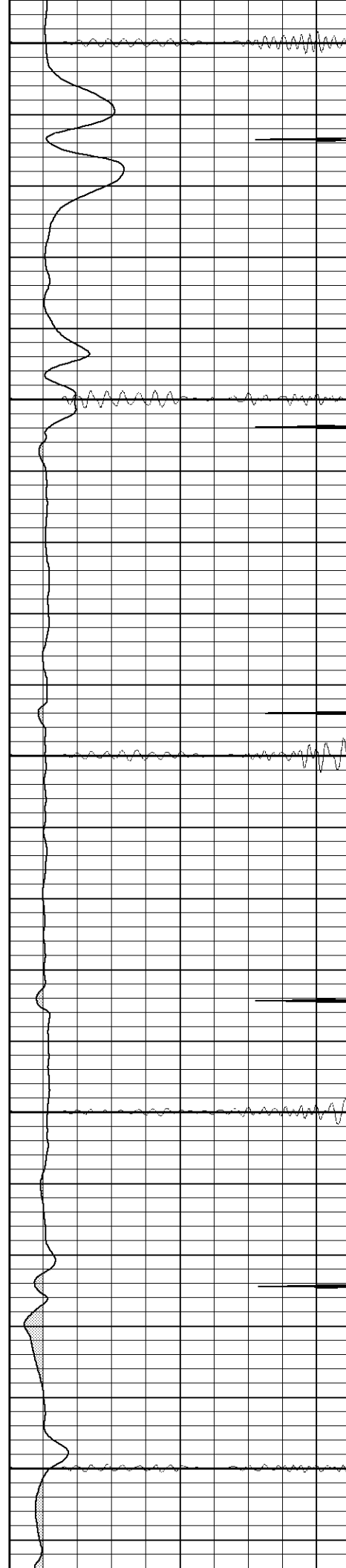
850

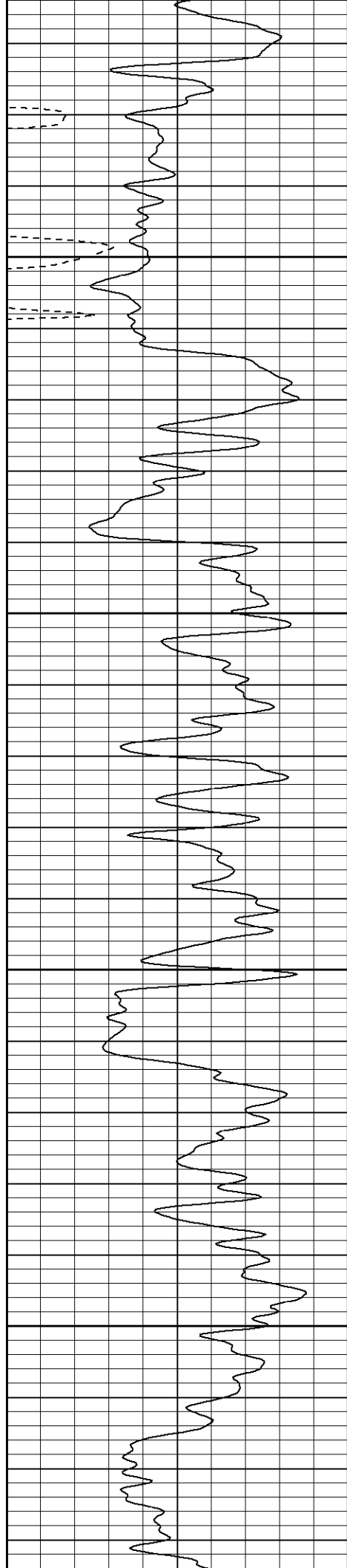
900

950

1000

1050



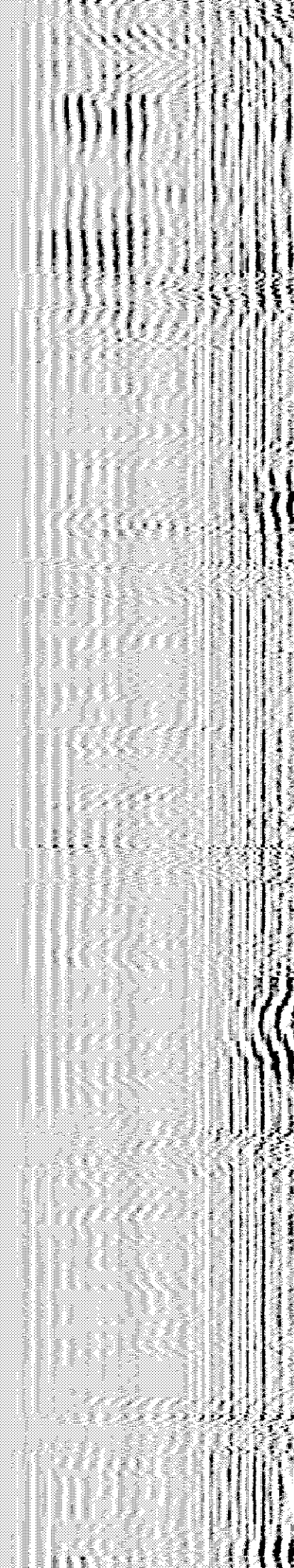
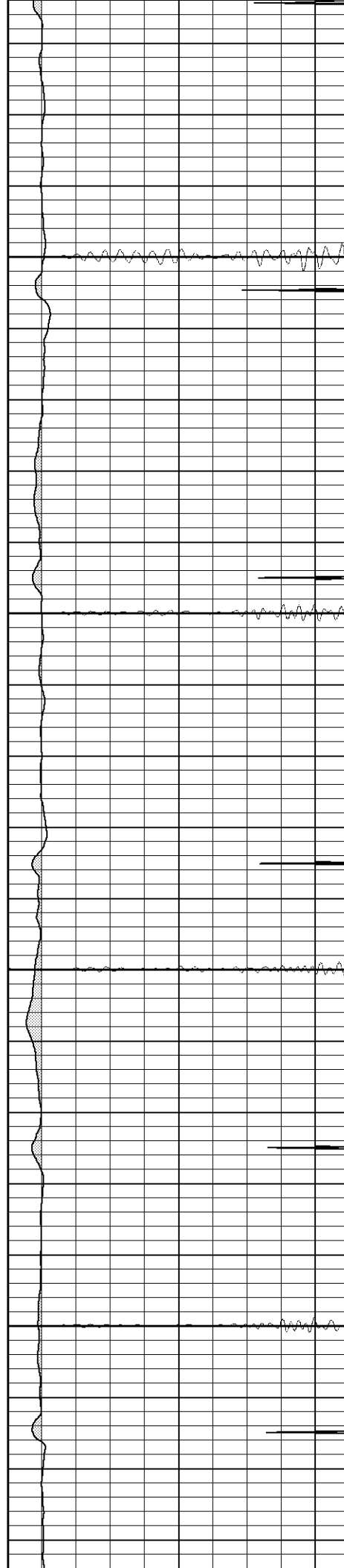


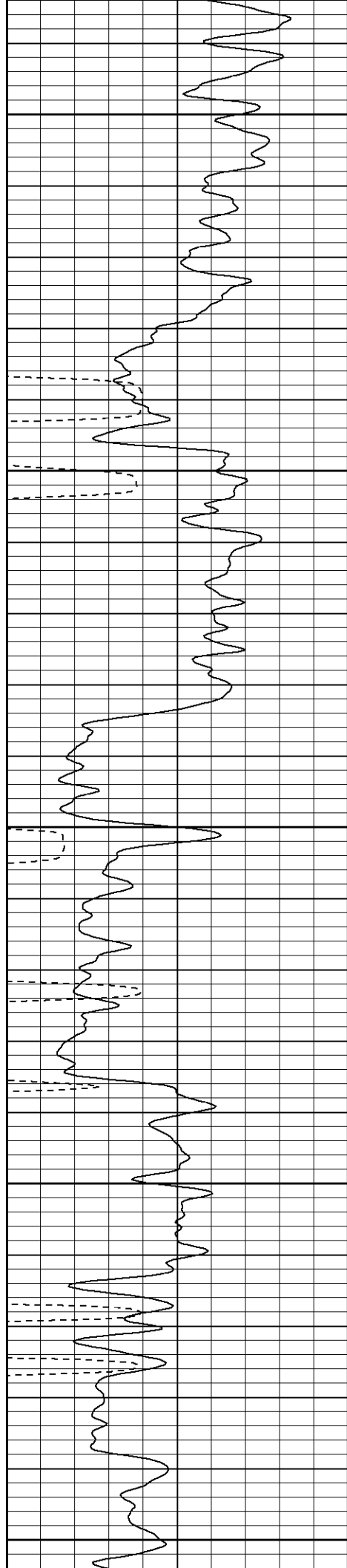
1100

1150

1200

1250





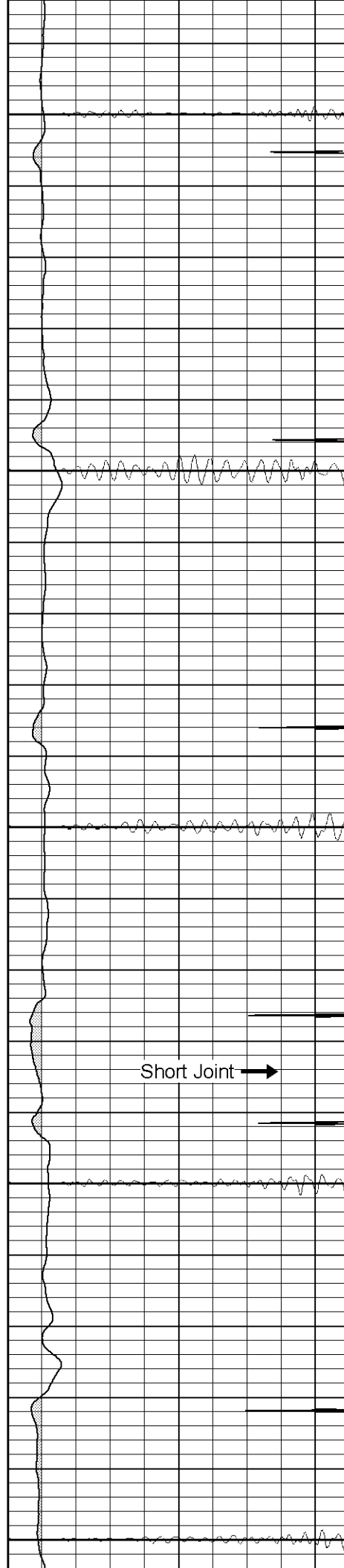
1300

1350

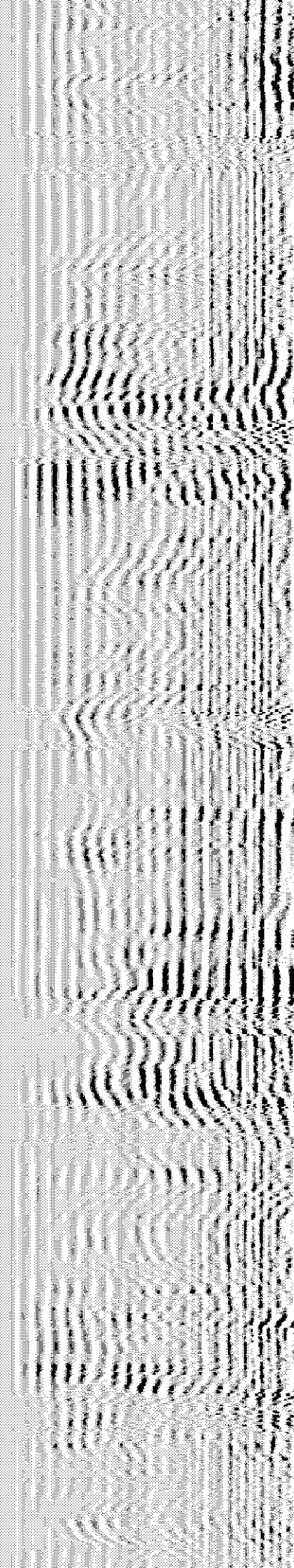
1400

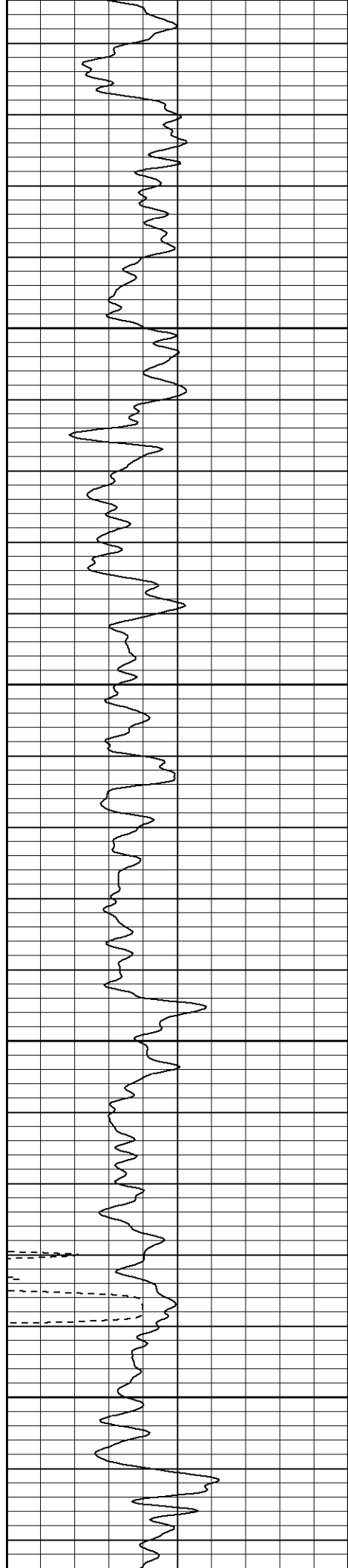
1450

1500



Short Joint →



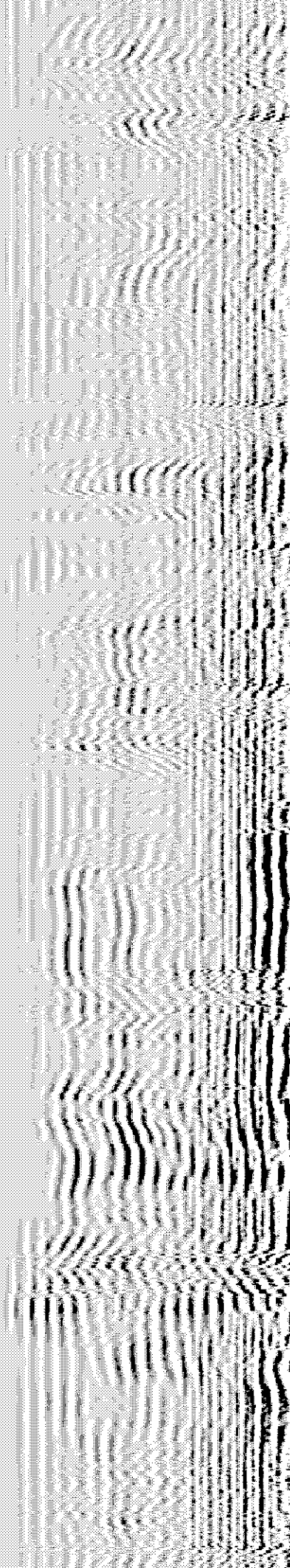
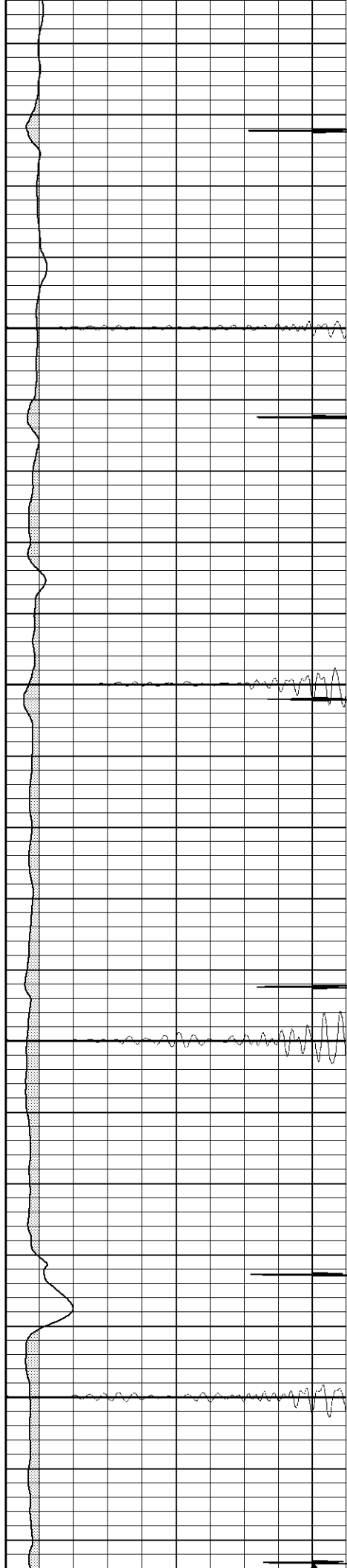


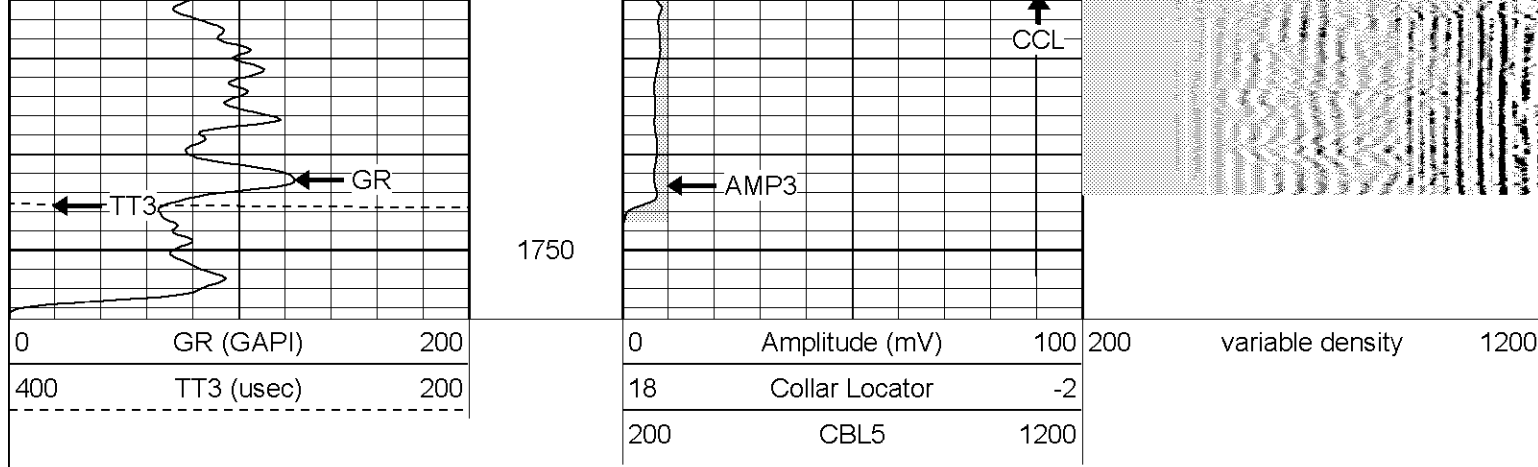
1550

1600

1650

1700

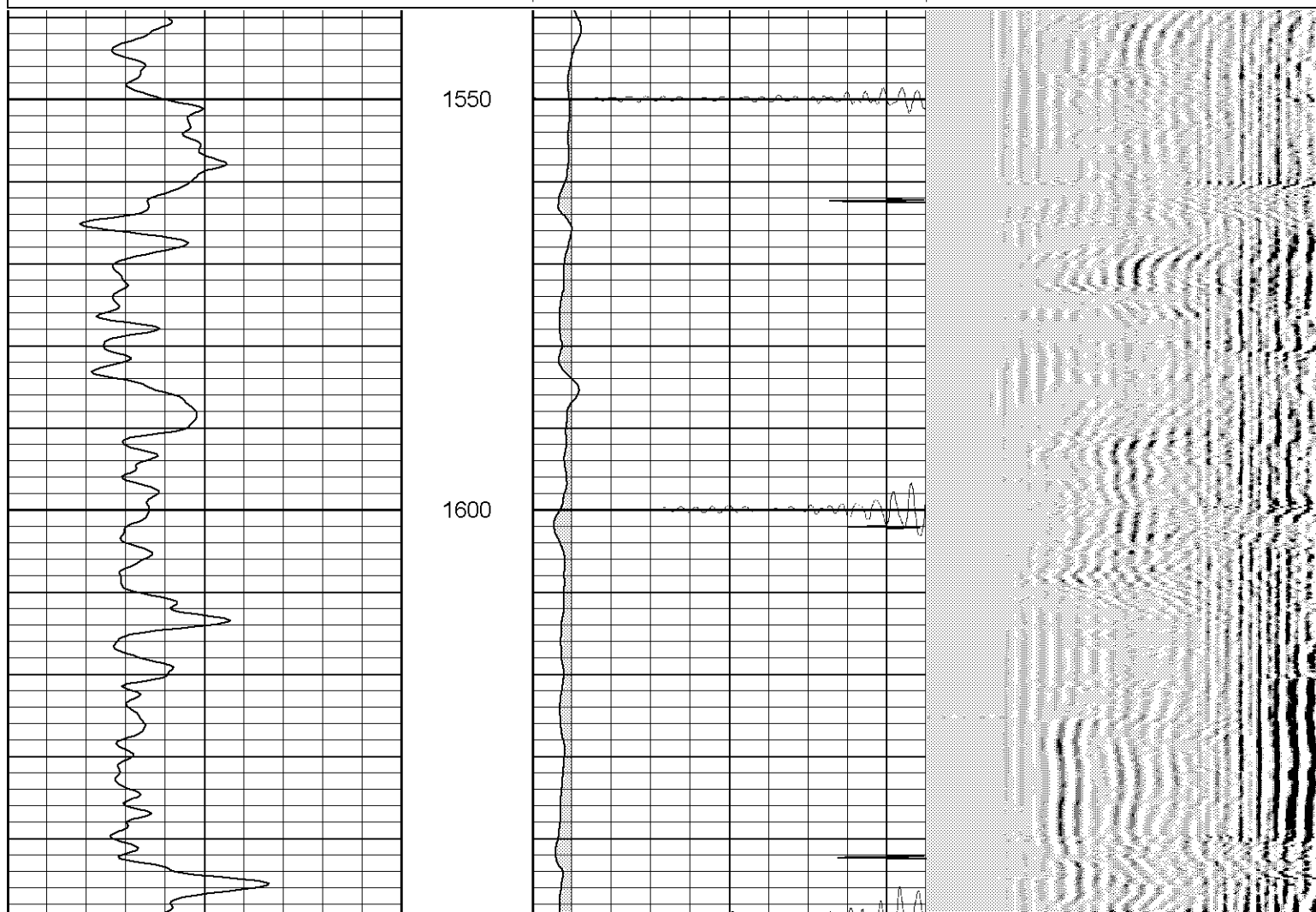
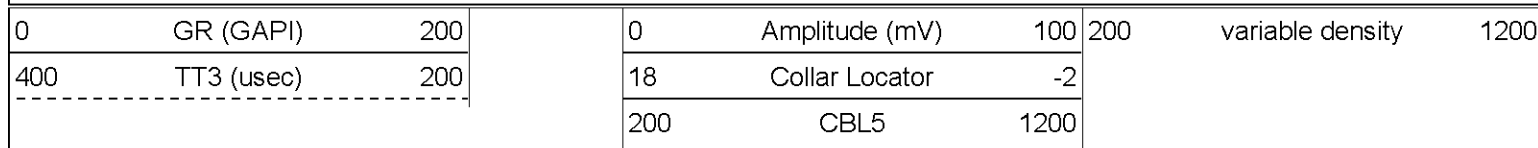


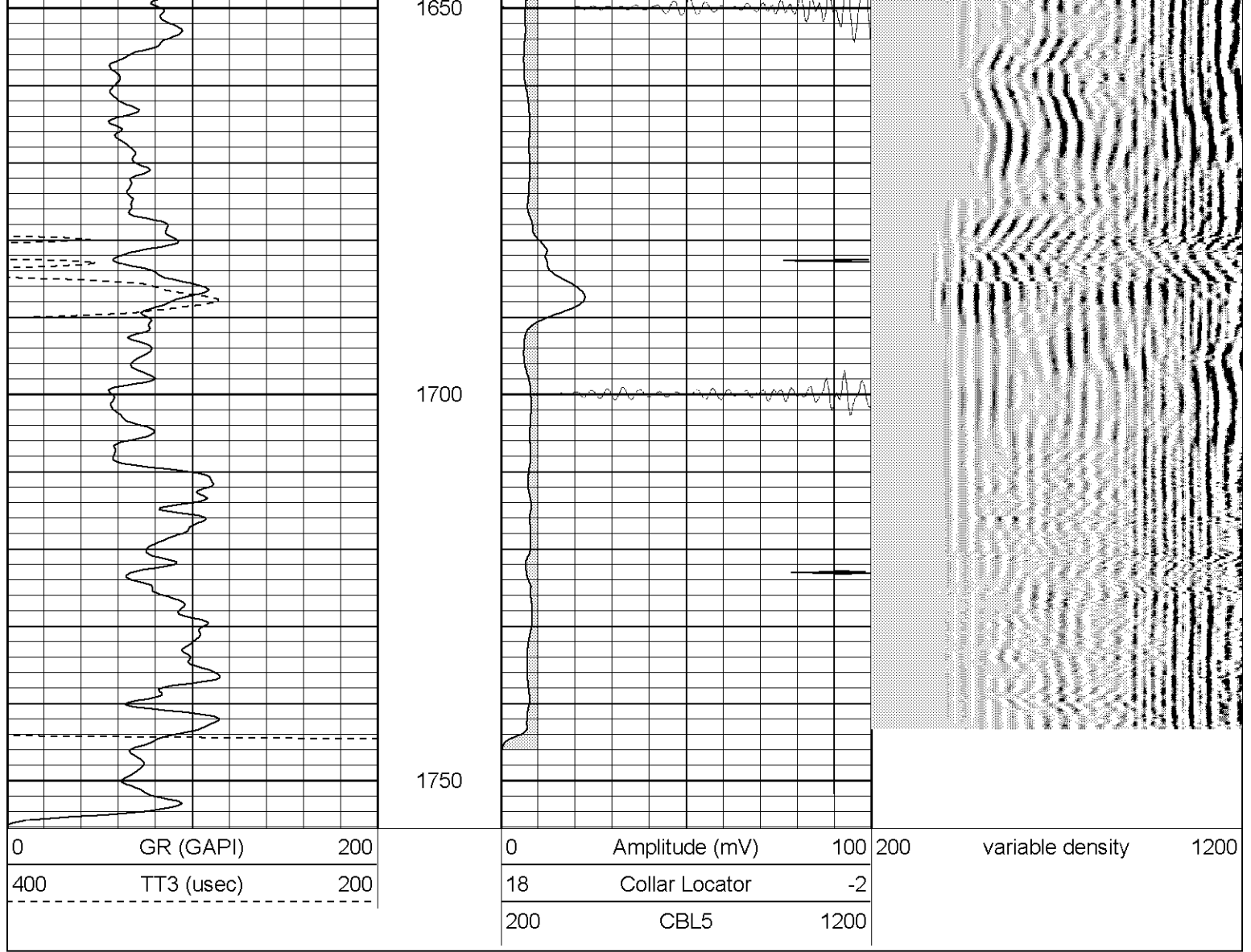


Patterson

Repeat Section

Database File: blavkrabbit4220rb.db
 Dataset Pathname: pass1
 Presentation Format: cbIt2
 Dataset Creation: Thu Oct 27 15:21:01 2005 by Log Warrior 7.0 STD Cas
 Charted by: Depth in Feet scaled 1:240





Gamma Ray Calibration Report		
Serial Number:	2.75	
Tool Model:	T3	
Performed:	Sun Jun 13 13:33:21 1993	
Calibrator Value:	1.0	GAPI
Background Reading:	0.0	cps
Calibrator Reading:	1.0	cps
Sensitivity:	1.0000	GAPI/cps

Cement Bond Log Calibration Report		
Serial Number:	Titan4	
Tool Model:	T4	
Performed:	Fri Feb 18 15:47:51 2005	
Depth:	59.2	ft
Casing Diameter:	5.5	in
	3' Spacing	5' Spacing
Signal Zero:	1	0
Calibrated Amplitude:	82	82
Reading at Signal Zero:	0.00595703	0.00588379
Reading in Free Pipe:	1.23403	1.77976
		mV
		mV
		V
		V

46.2264
-0.271987

Dataset:	/field/well/run1/_plots/_jobs/_cbl
Total Length:	19.63 ft
Total Weight:	215.00 lb
O.D.	3.00 in