



SUPERIOR
Black Lick, Pa.
Mercer, Pa.
Wooster, Oh.
Cleveland, Ok.
Trinidad, Co.

DUAL INDUCTION LOG

Company XTO Energy Inc.
Well Hill Ranch 25-14
Field Purgatoire River
County Las Animas State Colorado

Location: API # : 05 071 09340 00

224' FSL & 1674' FWL

SEC 25 TWP 34S RGE 67W

Permanent Datum	Ground Level	Elevation	7660'
Log Measured From	Ground Level		
Drilling Measured From	Ground Level		

Other Services
cdl
neu
Elevation
K.B. -----
D.F. -----
G.L. 7660'

Date	8-27-07		
Run Number	One		
Depth Driller	2350'		
Depth Logger	2341'		
Bottom Logged Interval	2329'		
Top Log Interval	Surface Casing		
Casing Driller	8 5/8" @ 493'		
Casing Logger	493'		
Bit Size	7 7/8"		
Type Fluid in Hole	Water		
Density / Viscosity	///		
pH / Fluid Loss	///		
Source of Sample	///		
Rm @ Meas. Temp	///		
Rmf @ Meas. Temp	///		
Rmc @ Meas. Temp	///		
Source of Rmf / Rmc	///		
Rm @ BHT	///		
Time Circulation Stopped	11:00 A.M.		
Time Logger on Bottom	1:45 P.M.		
Maximum Recorded Temperature	115 DEGF		
Equipment Number	T0701		
Location	Trinidad		
Recorded By	C. Sisneros		
Witnessed By	Mr. Don Johnson		

>>> Fold Here >>>

All interpretations are opinions based on inferences from electrical or other measurements and we cannot and do not guarantee the accuracy or correctness of any interpretation, and we shall not, except in the case of gross or willful negligence on our part, be liable or responsible for any loss, costs, damages, or expenses incurred or sustained by anyone resulting from any interpretation made by any of our officers, agents or employees. These interpretations are also subject to our general terms and conditions set out in our current Price Schedule.

Comments

Well Directions:
Up Lorencito Canyon, turn right on rd. to XTO,
drive past the Hill Ranch 34-02 location,
take next right, drive thru Hill Ranch 34-04 location,
next location.



SUPERIOR

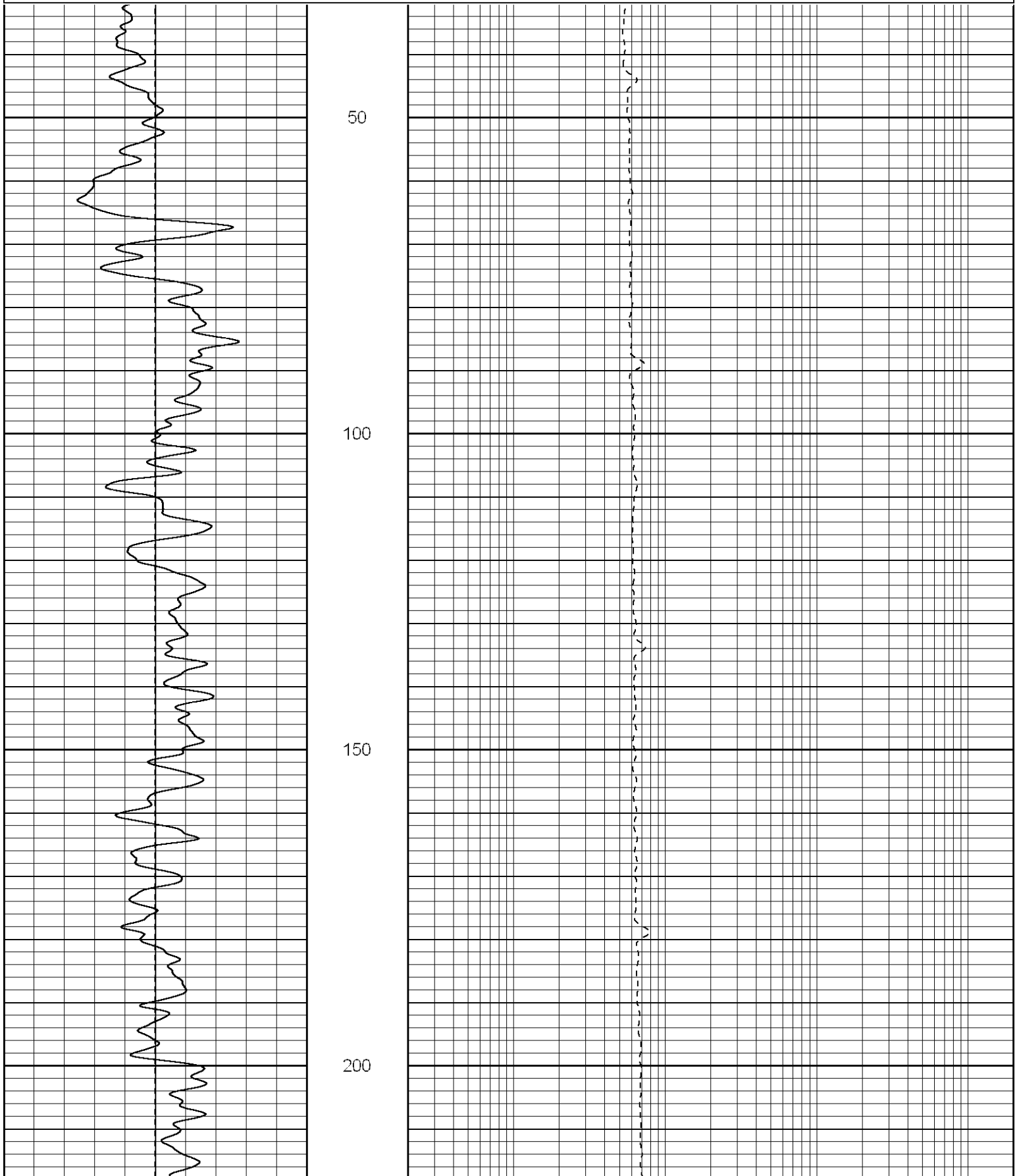
Black Lick, Pa.
Mercer, Pa.
Wooster, Oh.
Cleveland, Ok.
Trinidad, Co.

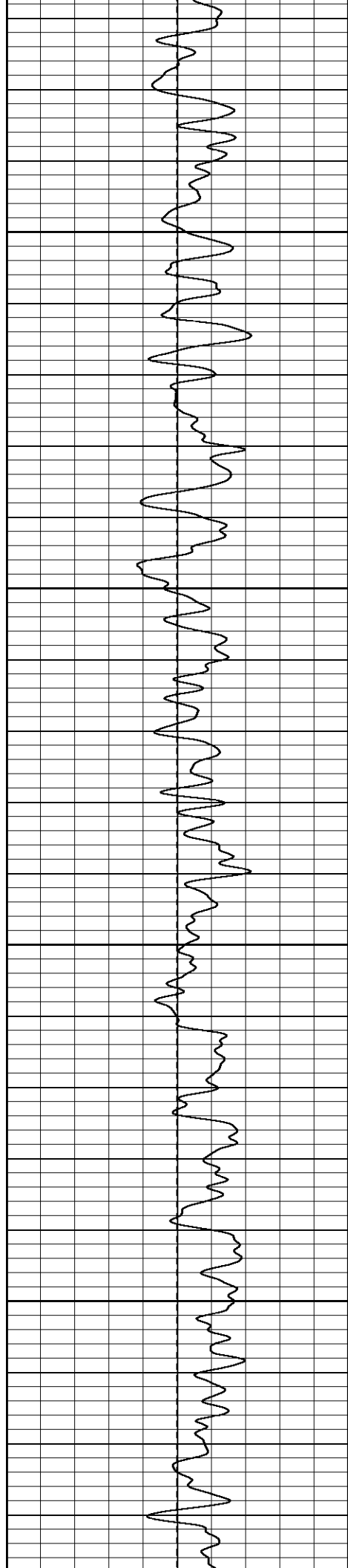
Main Pass

Database File: xtohr2514.db
Dataset Pathname: pass2.1
Presentation Format: dil
Dataset Creation: Mon Aug 27 15:34:22 2007 by Calc Open-Cased 070508
Charted by: Depth in Feet scaled 1:240

0	GR (GAPI)	200
-100	SP (mV)	100

0.2	RILD (Ohm-m)	2000
0.2	RILM (Ohm-m)	2000
0.2	RLL3 (Ohm-m)	2000



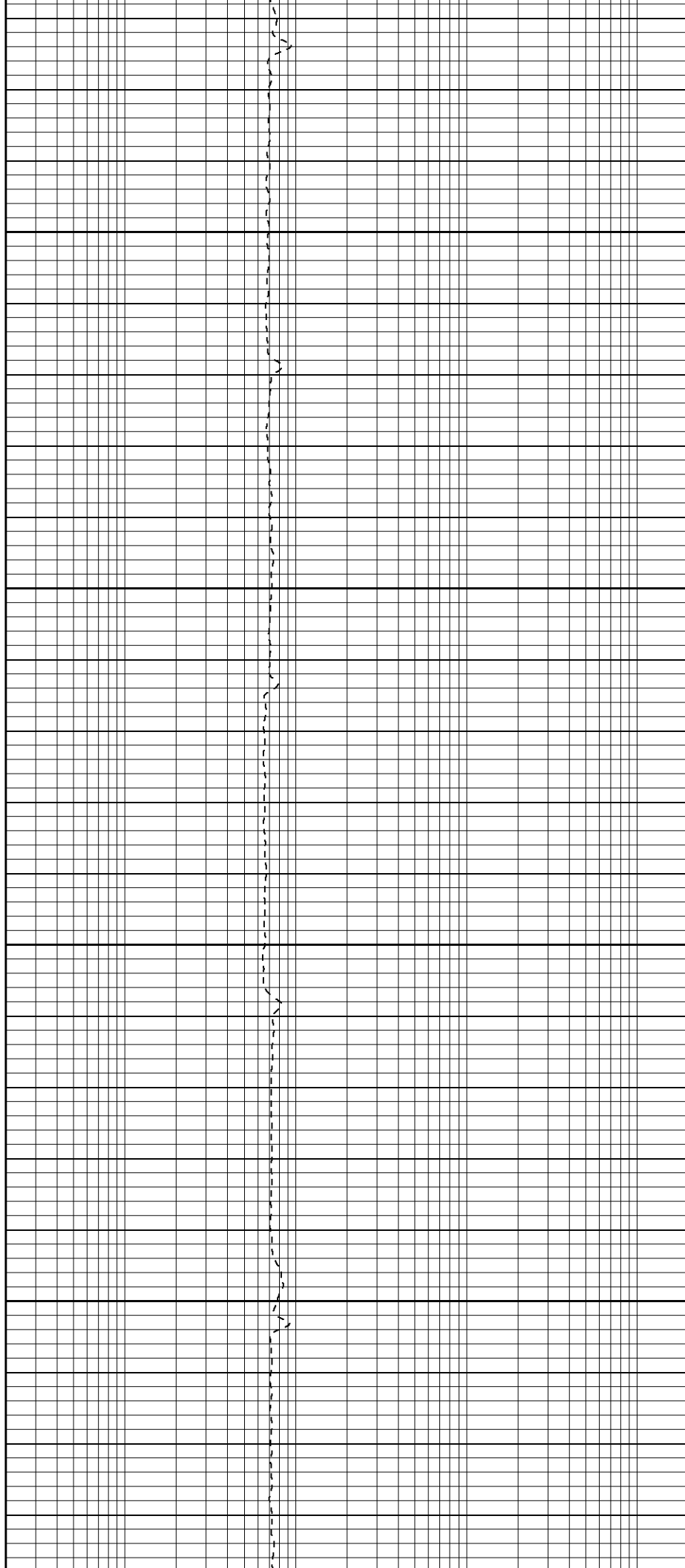


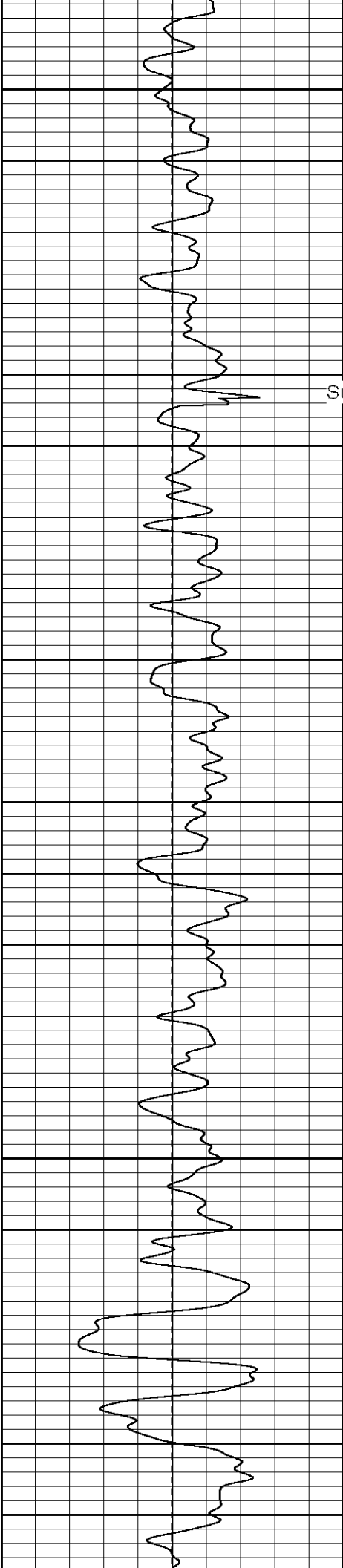
250

300

350

400





Surface Casing

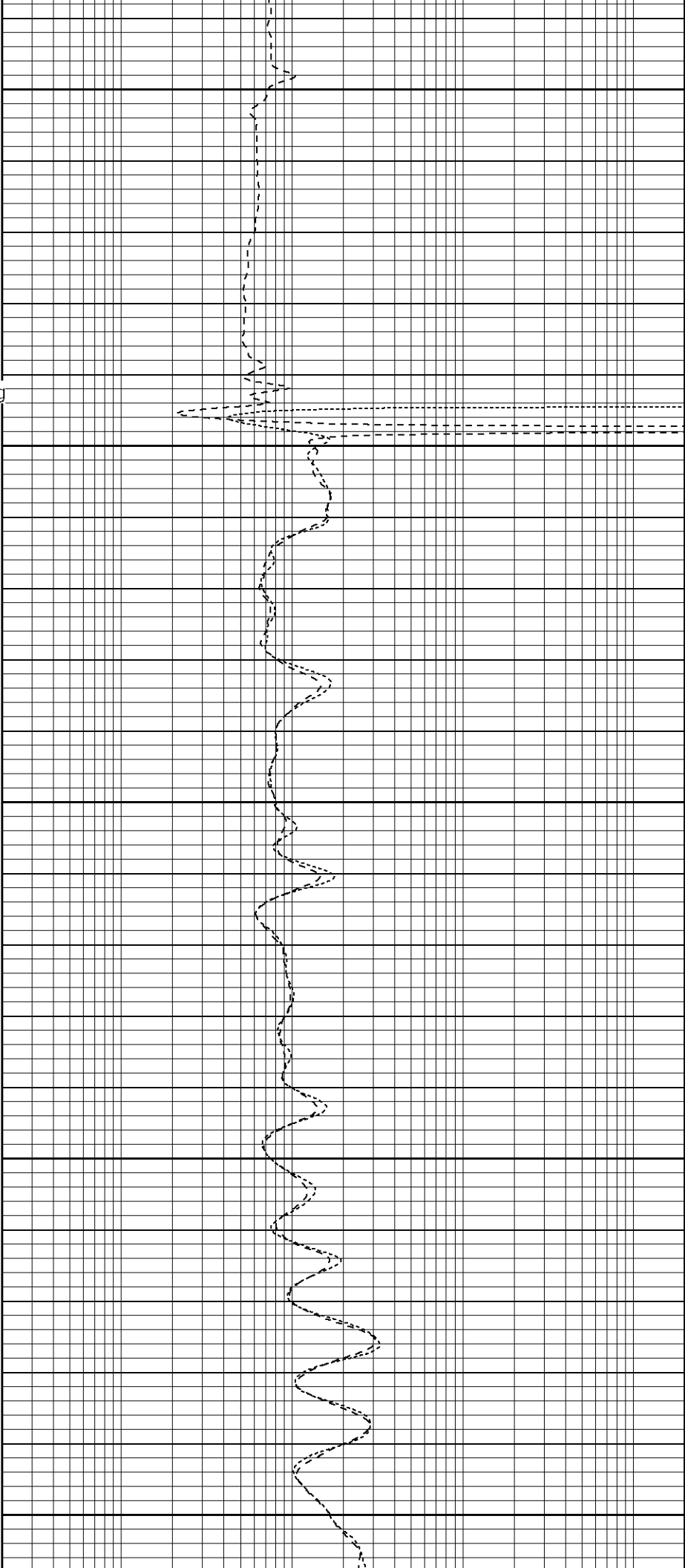
450

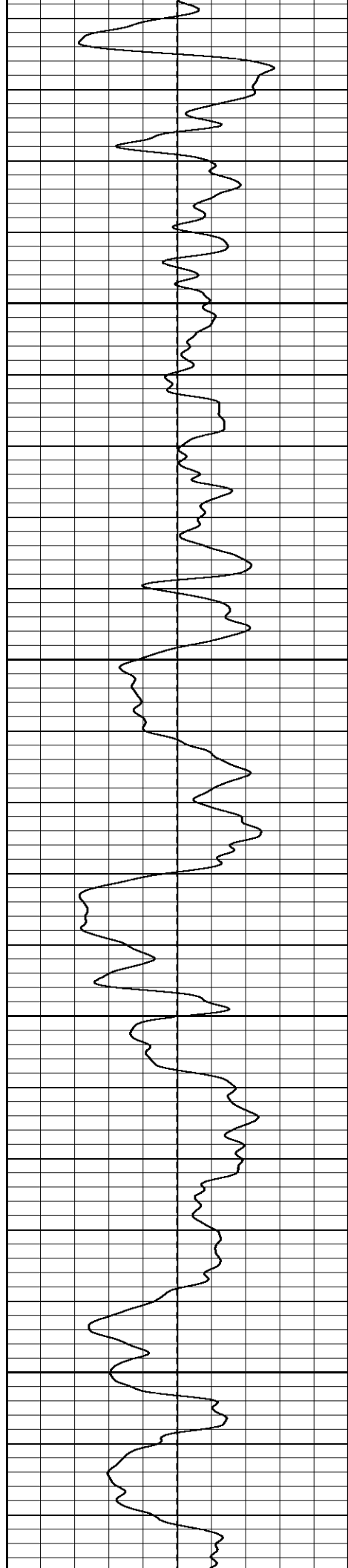
500

550

600

650



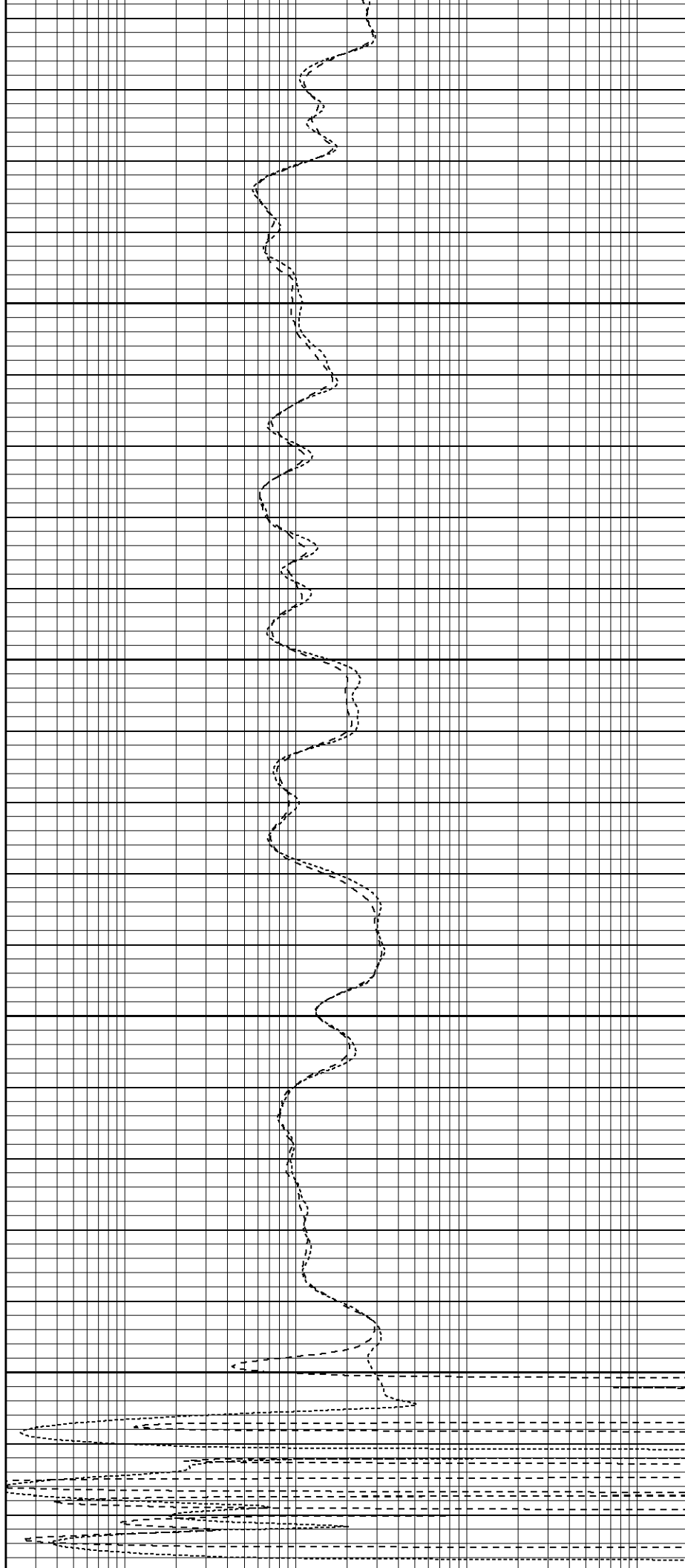


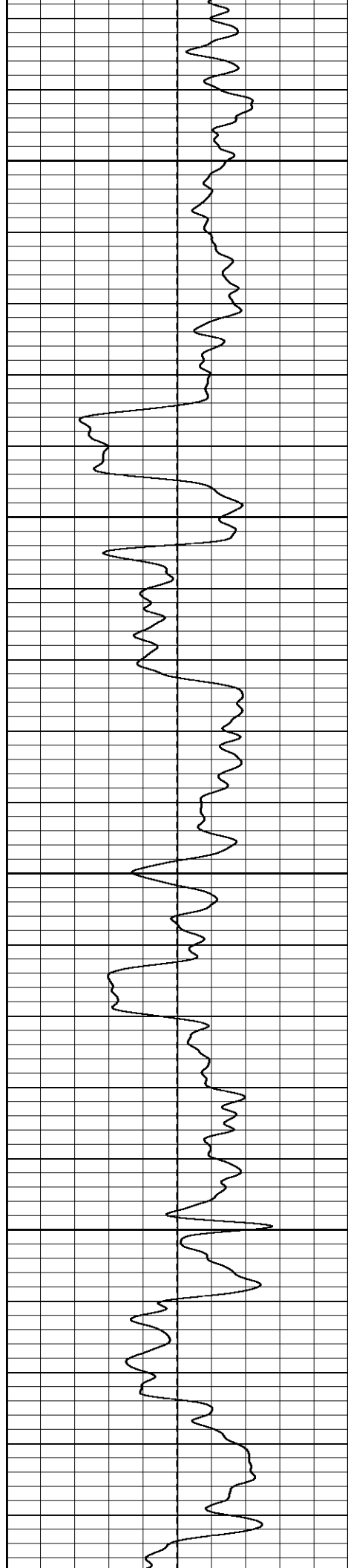
700

750

800

850



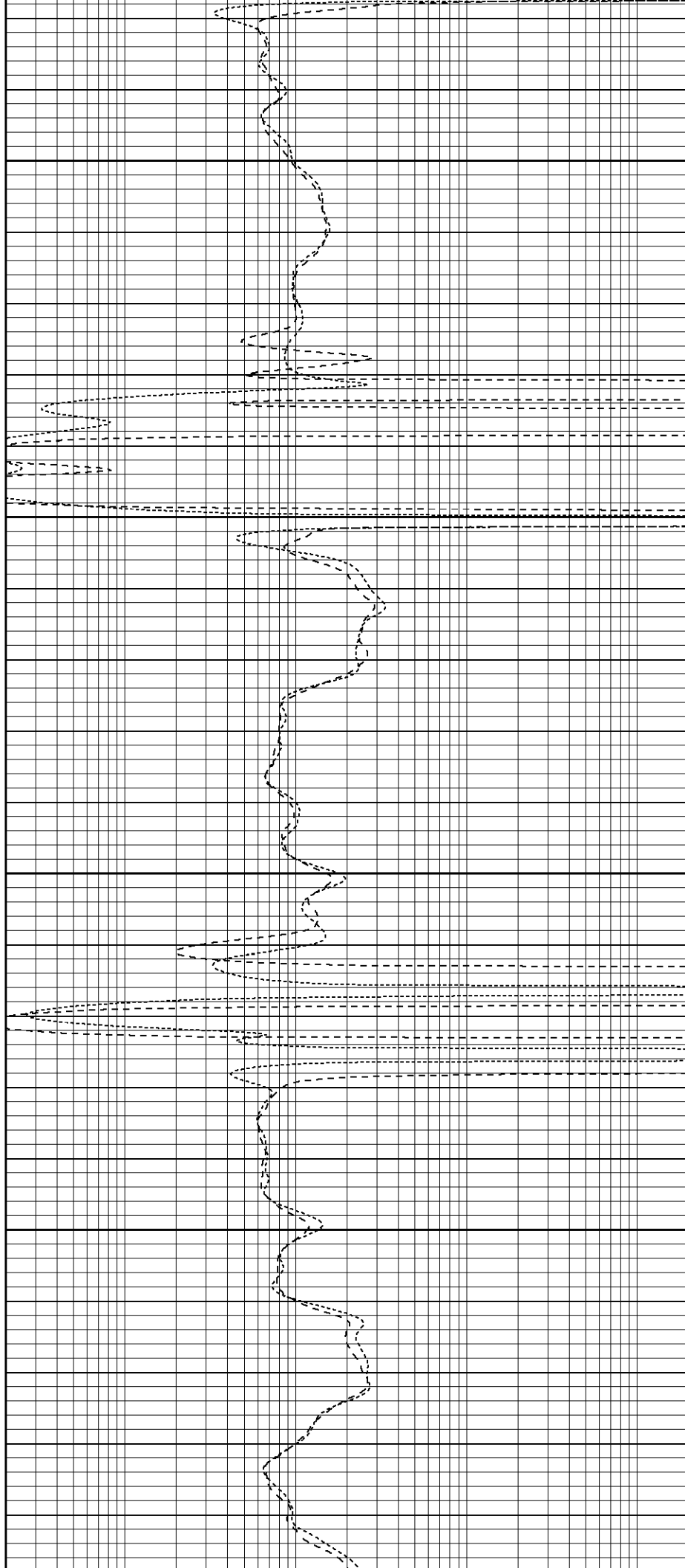


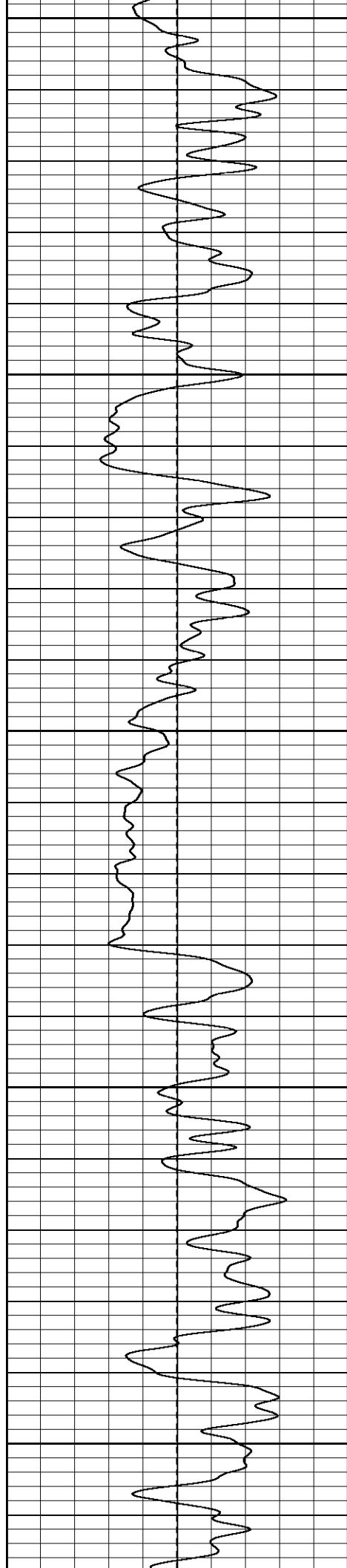
900

950

1000

1050





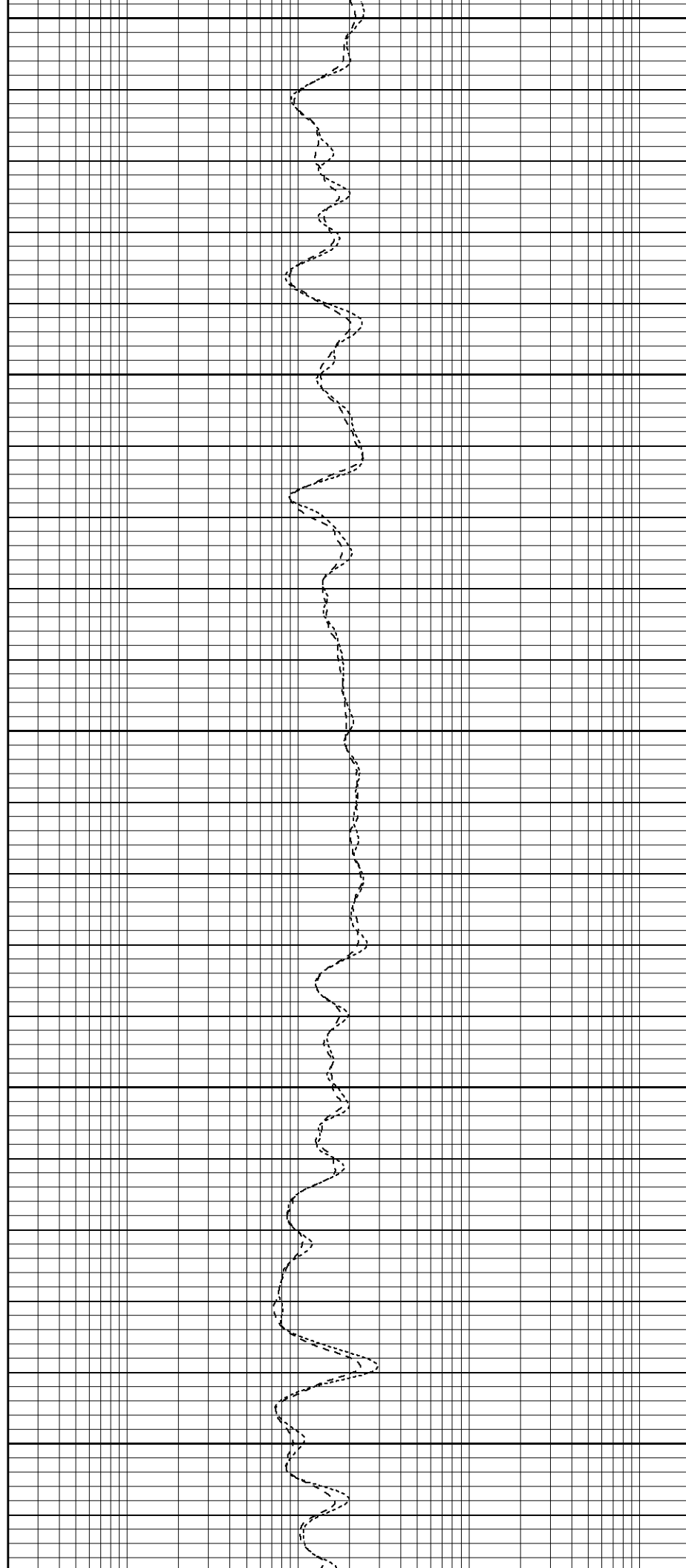
1100

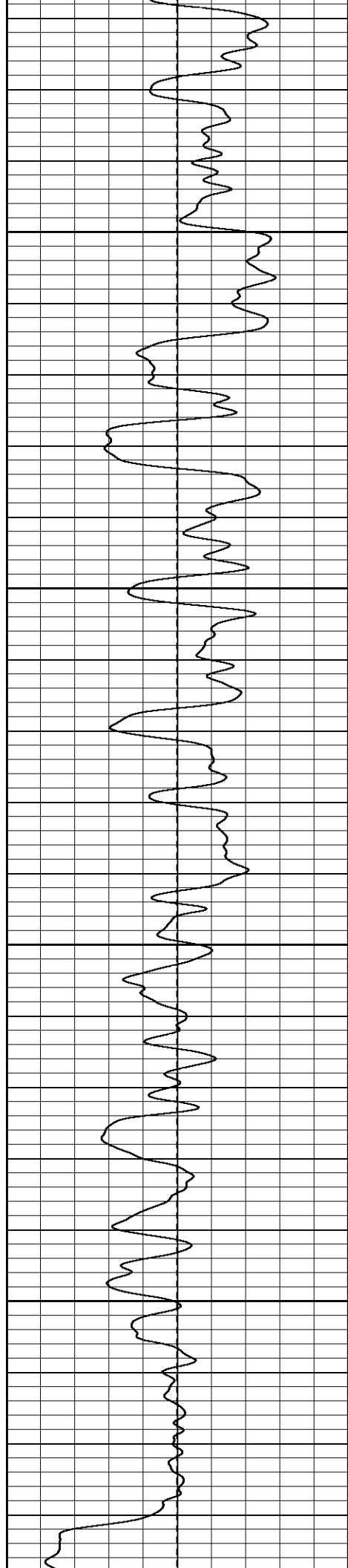
1150

1200

1250

1300



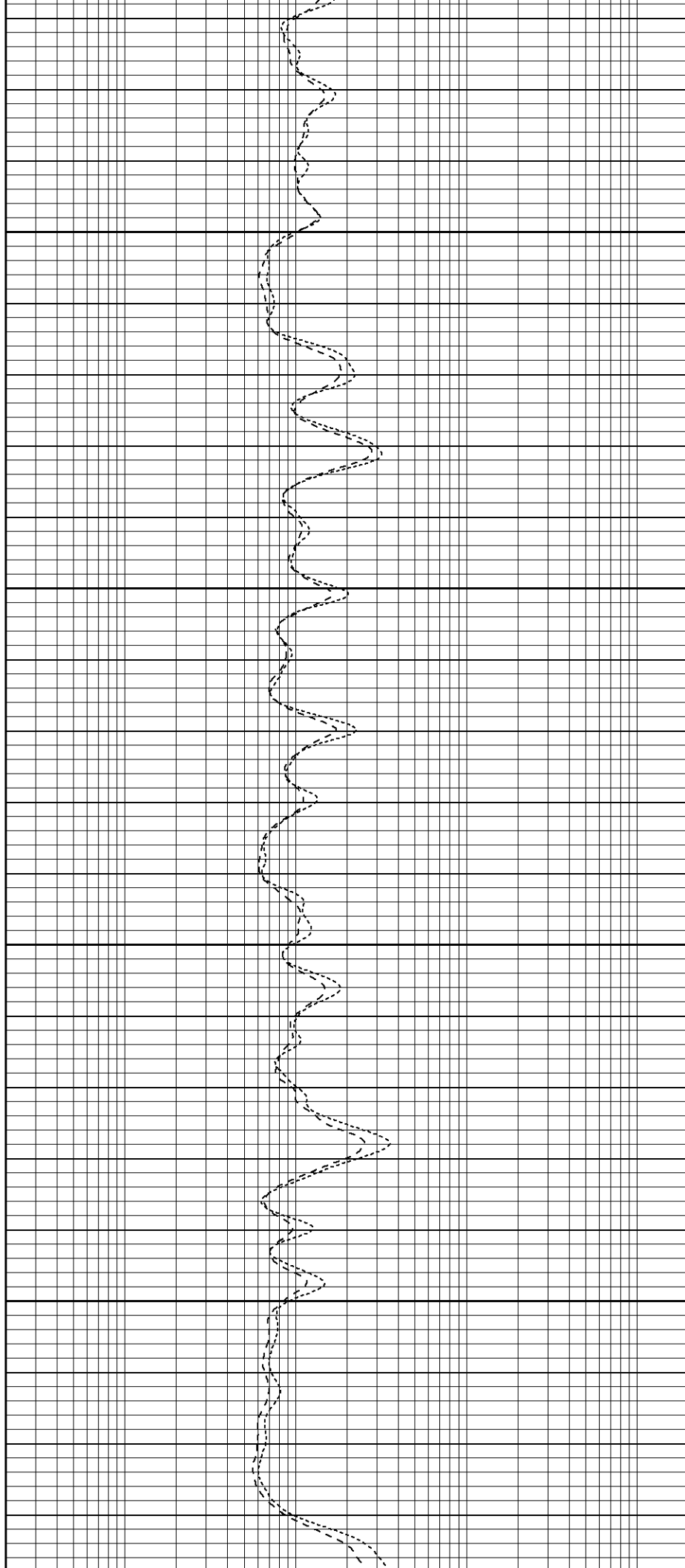


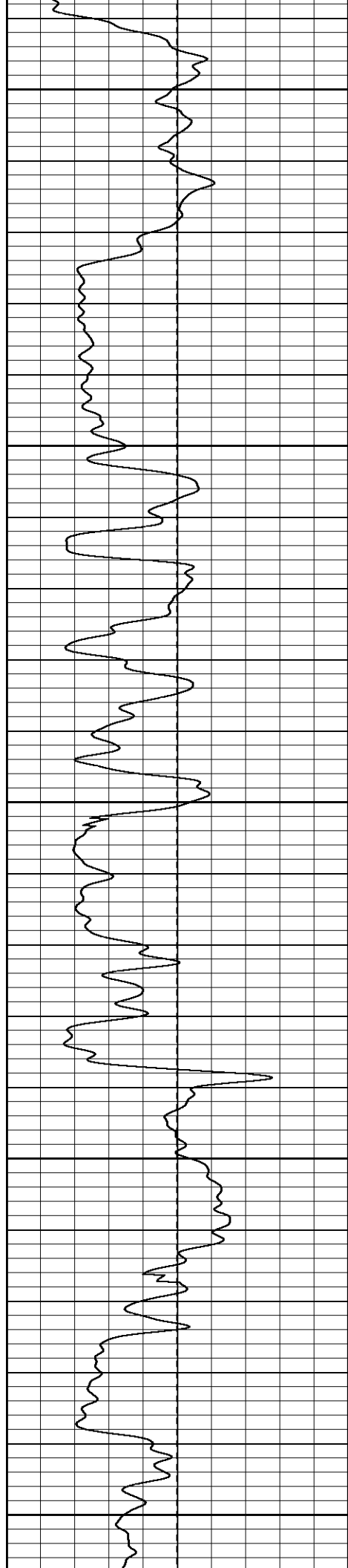
1350

1400

1450

1500





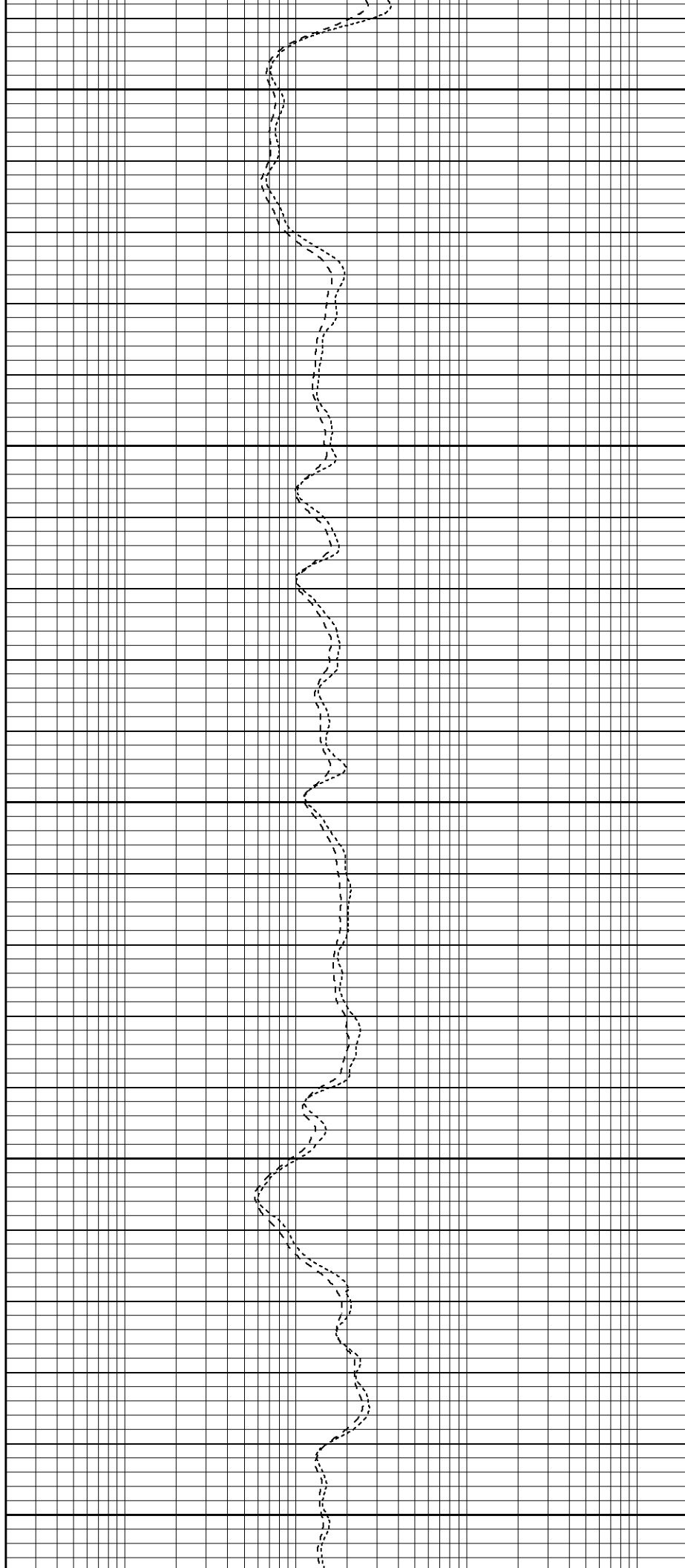
1550

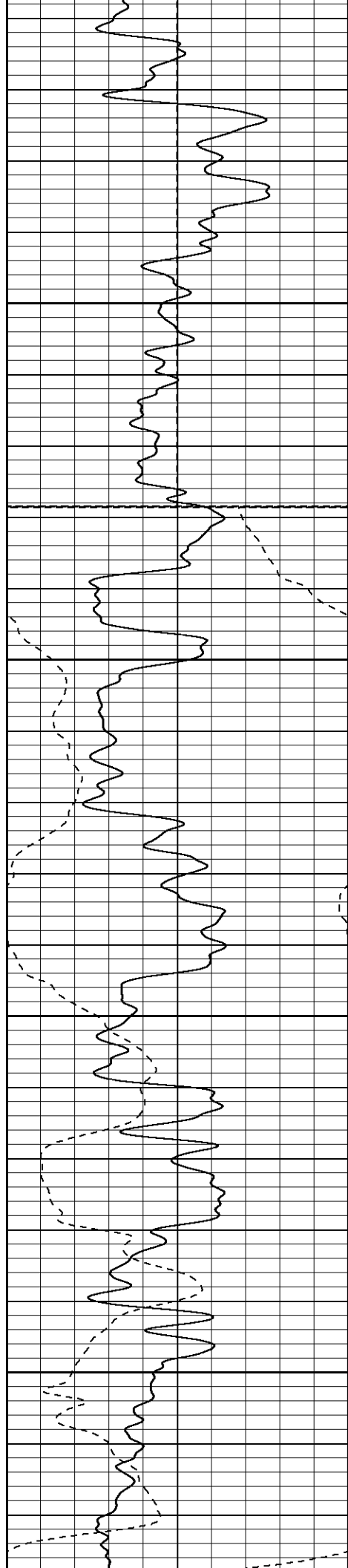
1600

1650

1700

1750





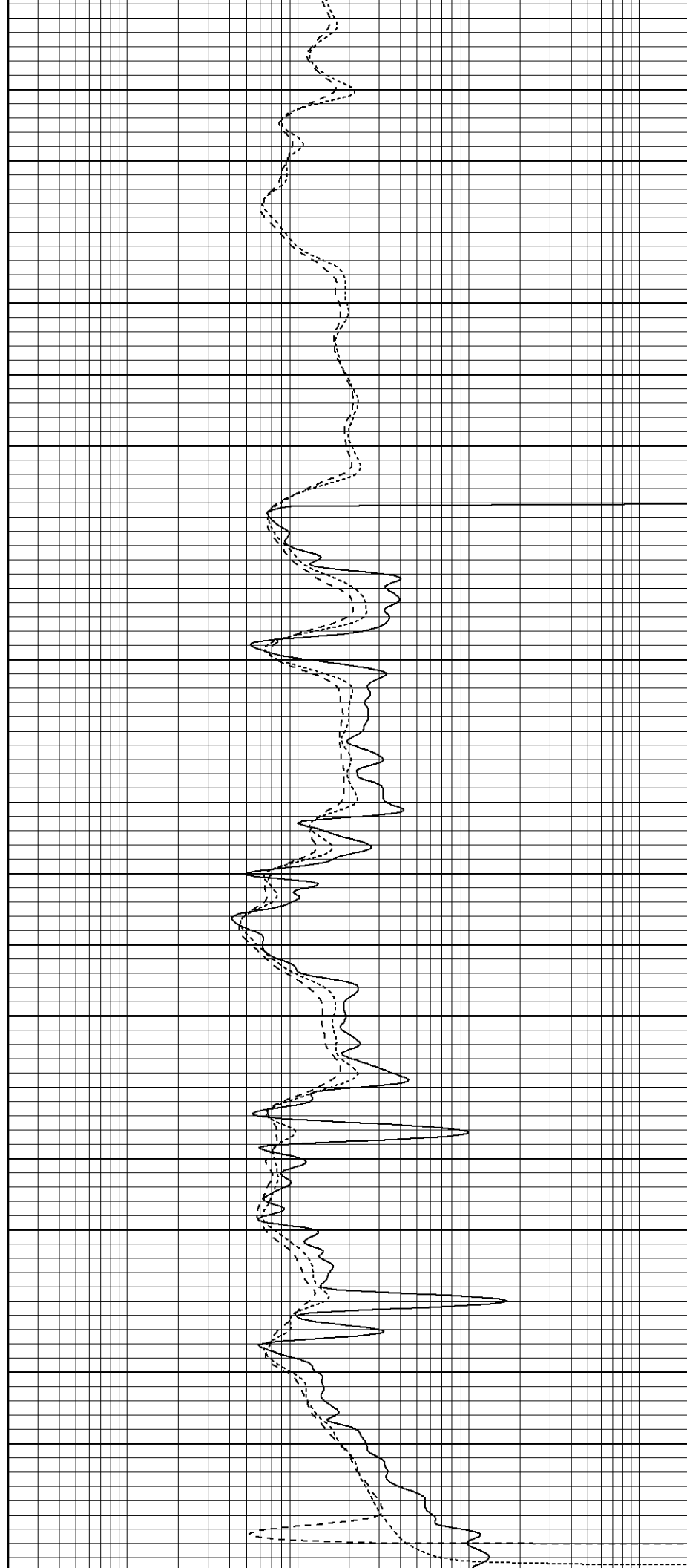
1800

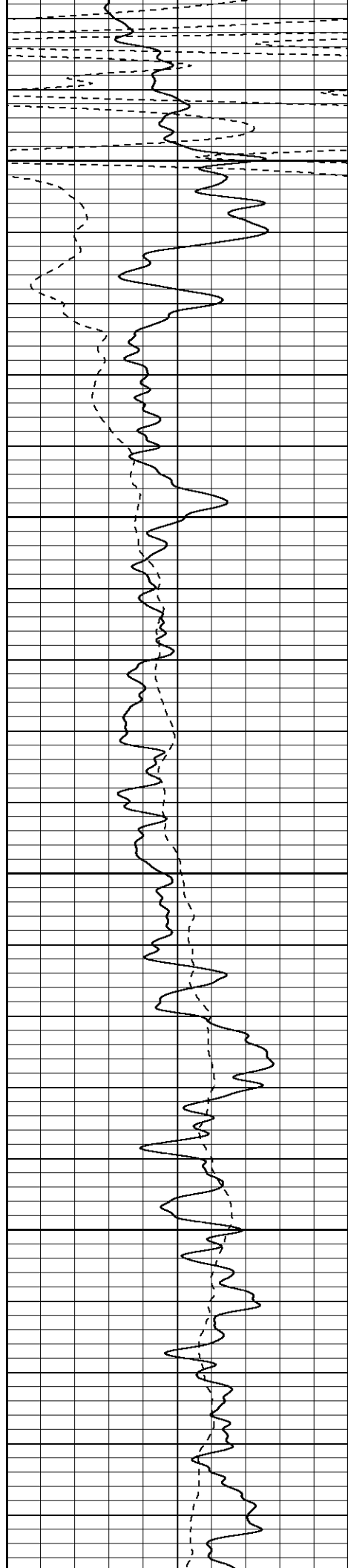
Air

1850

1900

1950



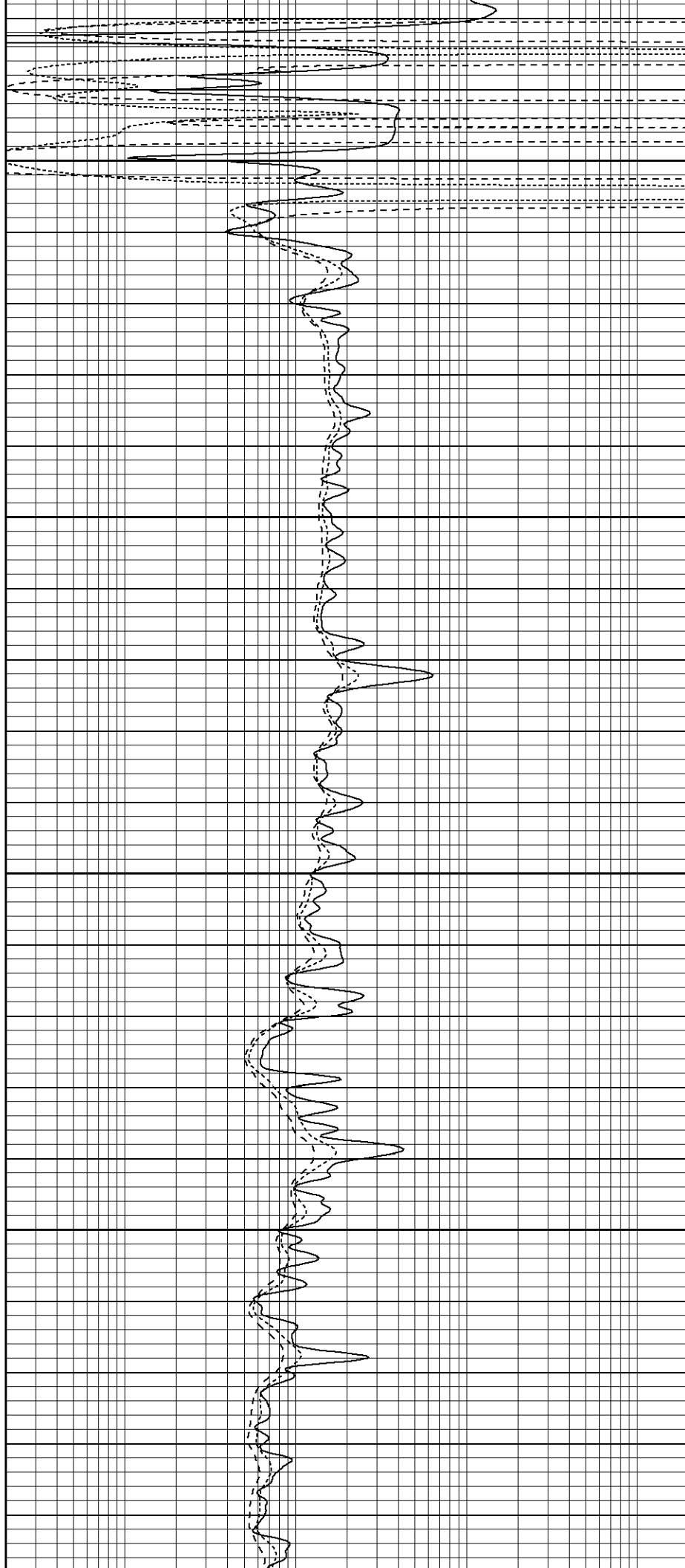


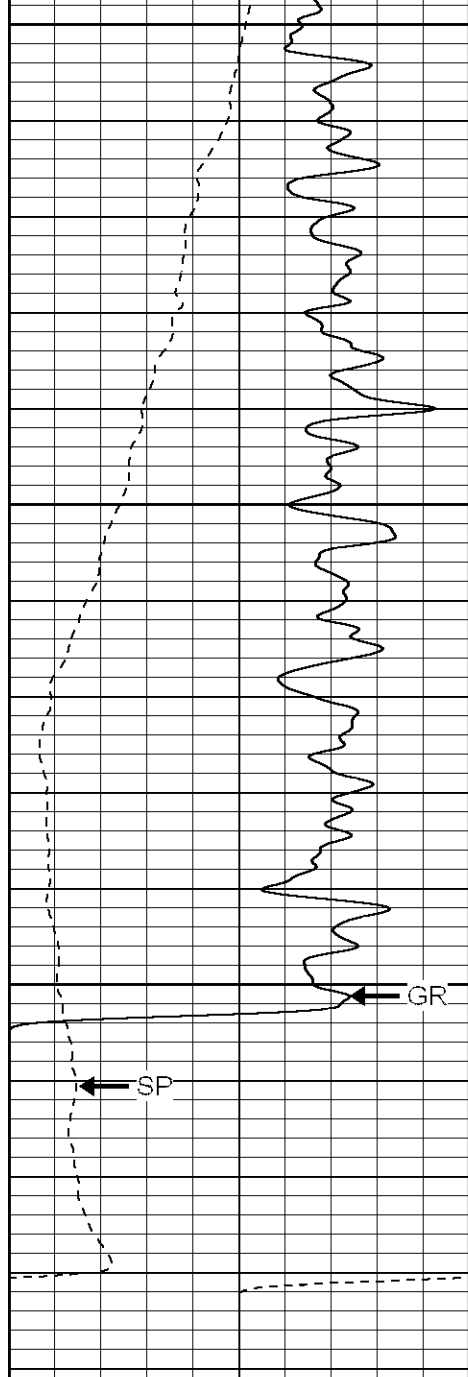
2000

2050

2100

2150



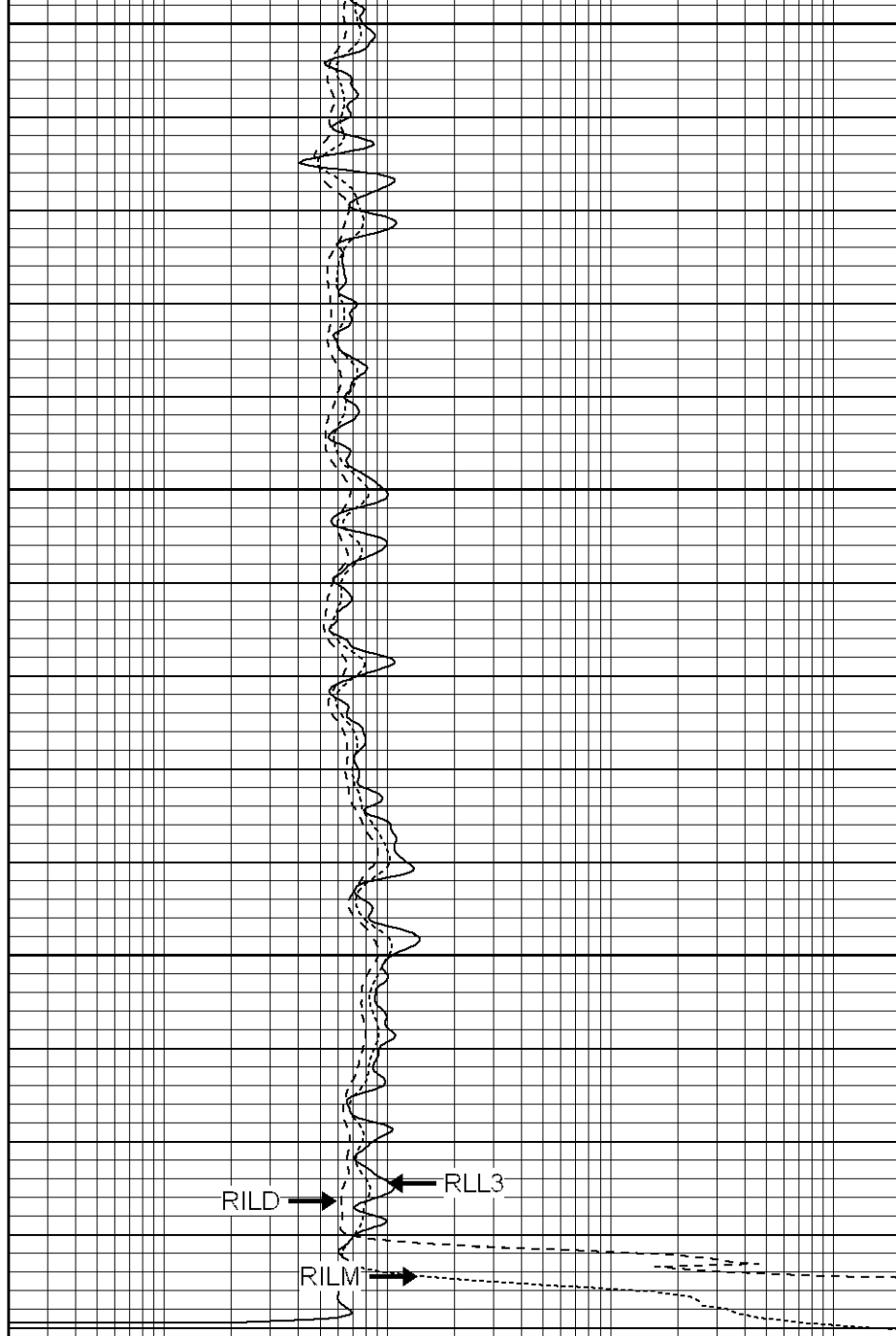


0	GR (GAPI)	200
-100	SP (mV)	100

2200

2250

2300



0.2	RILD (Ohm-m)	2000
0.2	RILM (Ohm-m)	2000
0.2	RLL3 (Ohm-m)	2000



SUPERIOR

Black Lick, Pa.
Meroer, Pa.
Wooster, Oh.
Cleveland, Ok.
Trinidad, Co.

Repeat Pass

Database File: xtohr2514.db
Dataset Pathname: pass1.1
Presentation Format: dil
Dataset Creation: Mon Aug 27 14:44:30 2007 by Calc Open-Cased 070508
Charted by: Depth in Feet scaled 1:240

0	GR (GAPI)	200
-100	SP (mV)	100
0	GR-repeat (GAPI)	200

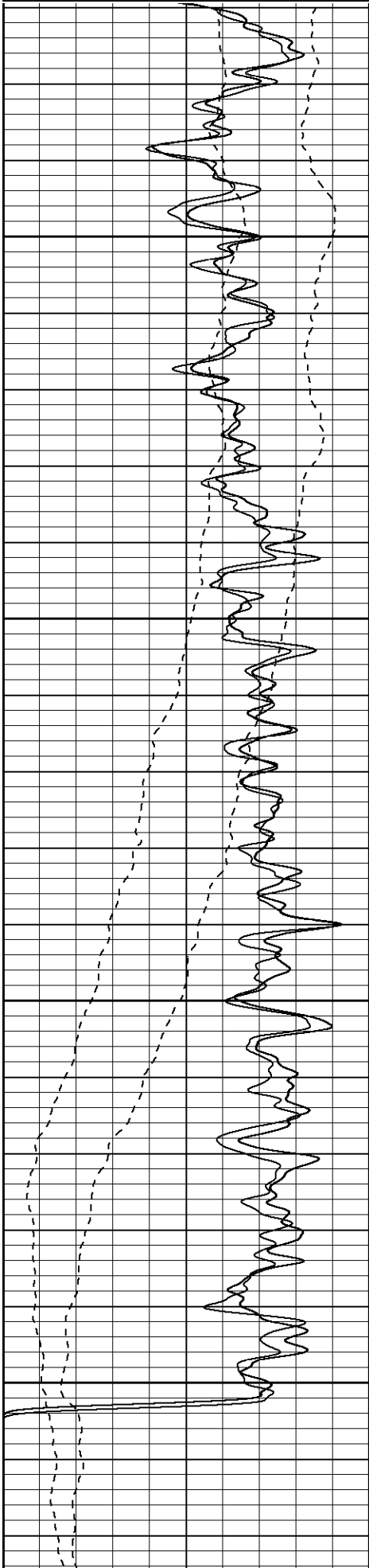
0.2	RILD (Ohm-m)	2000
0.2	RILM (Ohm-m)	2000
0.2	RLL3 (Ohm-m)	2000

-100 SP-repeat (mV) 100

0.2 RLL3-repeat (Ohm-m) 2000

0.2 RILM-repeat (Ohm-m) 2000

0.2 RILD-repeat (Ohm-m) 2000

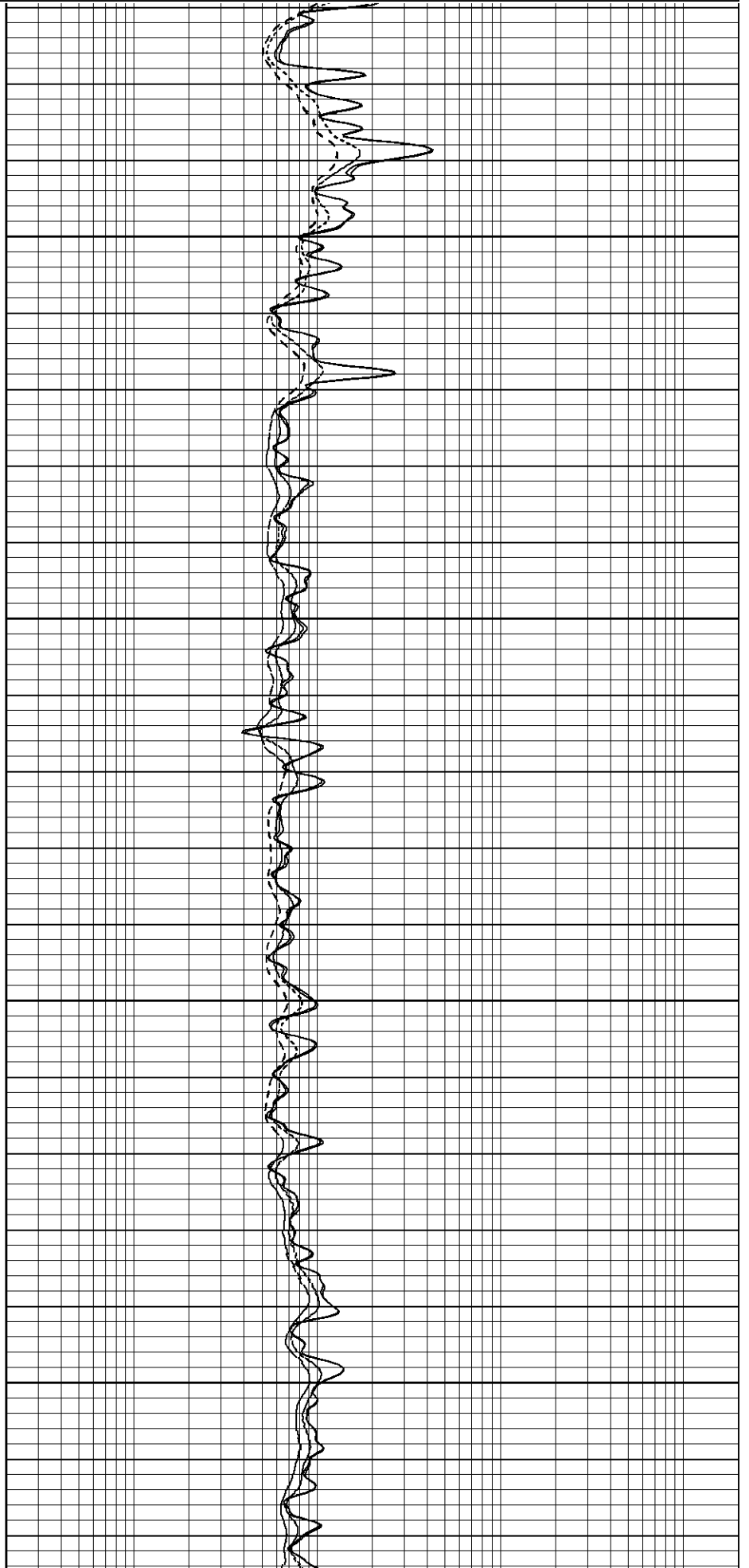


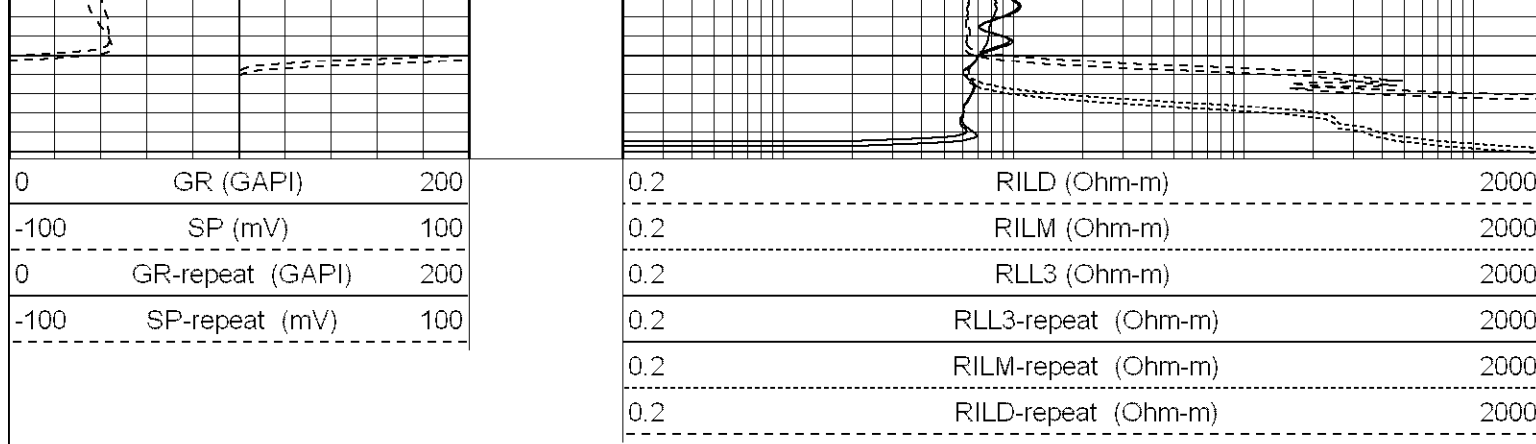
2150

2200

2250

2300





Calibration Report

Database File: xtohr2514.db
Dataset Pathname: pass1
Dataset Creation: Mon Aug 27 13:55:04 2007 by Log Open-Cased 070508

Dual Induction Calibration Report

Serial-Model: 5375-G
Surface Cal Performed: Wed Aug 22 09:06:29 2007
Downhole Cal Performed: Wed Aug 22 09:07:17 2007

Surface Calibration									
Readings				References			Results		
Loop:	Air	Loop		Air	Loop		m	b	
Deep	0.006	0.626	V	0.000	500.000	mmho-m	806.553	-5.233	
Medium	0.010	0.751	V	0.000	550.000	mmho-m	742.127	-7.130	
Internal:	Zero	Cal		Zero	Cal		m	b	
Deep	0.007	0.626	V	0.000	500.000	mmho-m	807.189	-5.533	
Medium	0.010	0.750	V	0.000	550.000	mmho-m	742.763	-7.426	

Downhole Calibration								
Internal:	Readings				References		Results	
	Zero	Cal			Zero	Cal	m	b
Deep	0.212	500.118	mmho-m	0.295	499.902	mmho-m	0.999	0.084
Medium	0.385	549.964	mmho-m	0.290	549.819	mmho-m	1.000	-0.095
Shallow	2.509	0.017	V	500.000	2.000	Ohm-m	159.000	-7.400

Compensated Density Calibration Report

Serial-Model: 902-2.75POH
Source / Verifier: /
Master Calibration Performed: Sat Aug 18 23:06:07 2007

Master Calibration					
	Density			Far Detector	Near Detector
Magnesium	1.710	g/cc		1100.11	545.88 cps
Aluminum	2.590	g/cc		193.54	268.05 cps
Spine Angle = 67.74				Density/Spine Ratio = 0.469	




	Size		Reading	
Small Ring	7.70	in	1.79	V
Large Ring	17.00	in	4.21	V

Neutron Calibration Report

Serial Number:	803	
Tool Model:	2.75POH	
Performed:	Tue Aug 21 13:41:10 2007	
Calibrator Value:	1	NAPI
Calibrator Reading:	1	cps
Sensitivity:	1	NAPI/cps

Gamma Ray Calibration Report

Serial Number:	801	
Tool Model:	2.75POH	
Performed:	Sat Aug 18 23:06:21 2007	
Calibrator Value:	1.0	GAPI
Background Reading:	0.0	cps
Calibrator Reading:	1.0	cps
Sensitivity:	0.8000	GAPI/cps

Sensor	Offset (ft)	Schematic	Description	Len (ft)	OD (in)	Wt (lb)
GR	37.84		None	0.75	1.50	5.00
			GR-2.75POH (801) Probe	3.73	2.75	43.00
NEU	32.30		NEU-2.75POH (803) Probe Epithermal	4.75	2.75	58.00
			CDL-2.75POH (902) Probe	8.43	2.75	106.00
LSD	24.47		Probe	0.89	3.50	20.00
DCAL	24.19					
SSD	23.95					

CILD SP	10.60 10.60		DIL-G (5375) Gearhart	20.83	4.00	345.00
CILM	6.89					
RLL3	1.70					

Dataset: xtohr2514.db: field/well/run1/pass1

Total Length: 39.37 ft

Total Weight: 577.00 lb

O.D. 4.00 in