

Patterson

**CEMENT
BOND
LOG**

Company XTO Energy Inc.
Well Hill Ranch 16-01
Field Purgatoire
County Las Animas State Colorado

Location: API # : 05 071 08368 00
544' FNL & 500' FEL
SEC 16 TWP 35S RGE 67W
Permanent Datum Ground Level Elevation 8151'
Log Measured From Ground Level
Drilling Measured From Ground Level
Other Services
Elevation
K.B. -----
D.F. -----
G.L. 8151'

Company XTO Energy Inc.
Well Hill Ranch 16-01
Field Purgatoire
County Las Animas
State Colorado

Date 01-09-06

Run Number	One
Depth Driller	2700'
Depth Logger	1717'
Bottom Logged Interval	1715'
Top Log Interval	Surface
Open Hole Size	7 7/8"
Type Fluid	Water
Density / Viscosity	///
Max. Recorded Temp.	133 DEG F
Estimated Cement Top	Surface
Time Well Ready	9:00 A.M.
Time Logger on Bottom	9:15 A.M.
Equipment Number	T720
Location	Trinidad
Recorded By	M. Norton
Witnessed By	Mfr. Ted Moff

Borehole Record			Tubing Record				
Run Number	Bit	From	To	Size	Weight	From	To

Casing Record	Size	Wgt/Ft	Top	Bottom
Surface String	8 5/8"		00	225'
Prot. String				
Production String	5 1/2"		00	N/A
Liner				

<<< Fold Here >>>

All interpretations are opinions based on inferences from electrical or other measurements and we cannot and do not guarantee the accuracy or correctness of any interpretation, and we shall not, except in the case of gross or willful negligence on our part, be liable or responsible for any loss, costs, damages, or expenses incurred or sustained by anyone resulting from any interpretation made by any of our officers, agents or employees. These interpretations are also subject to our general terms and conditions set out in our current Price Schedule.

Comments

Well Directions:
Lorencito Up XTO Hill, At Trash Dumpster Stay Left, Stay On Main Road At T Stay Left,
Turn Left Into Deadhorse Canyon, Over Cattle Guard Take An Immediate Left, At Y Stay Left,
Over One More Cattle Guard, At Y Left, First Left To Location.

Patterson

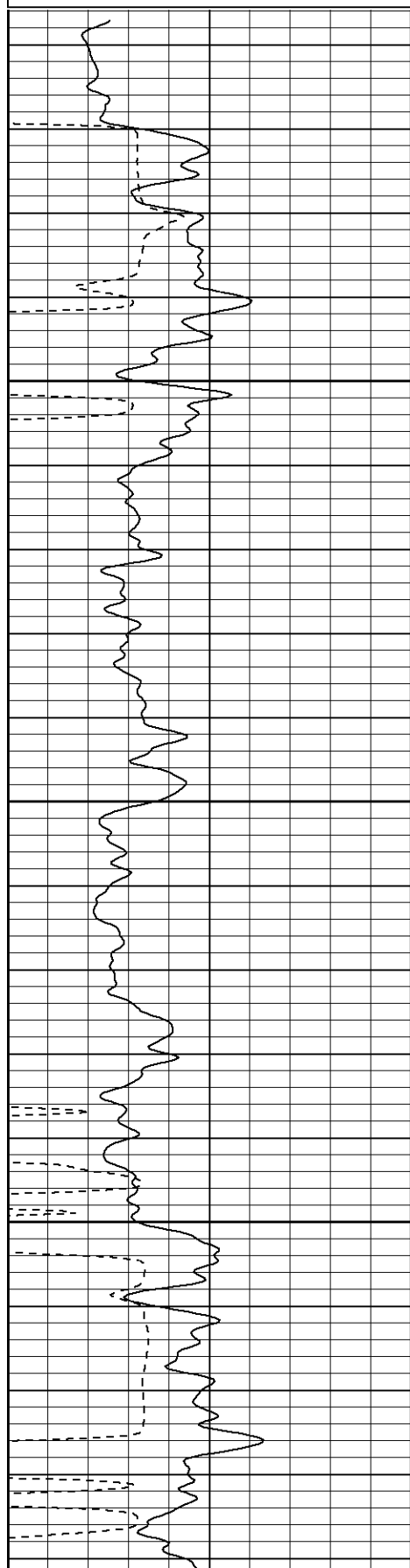
Main Pass

Database File: hr1601jan0906b.db
Dataset Pathname: pass2
Presentation Format: cblrt
Dataset Creation: Mon Jan 09 09:34:46 2006 by Log Warrior 7.0 STD Ope
Charted by: Depth in Feet scaled 1:240

0	GR (GAPI)	200
400	TT3 (usec)	200

0	AMP3 (mV)	100
18	CCL	-2
100	CBL5	1200

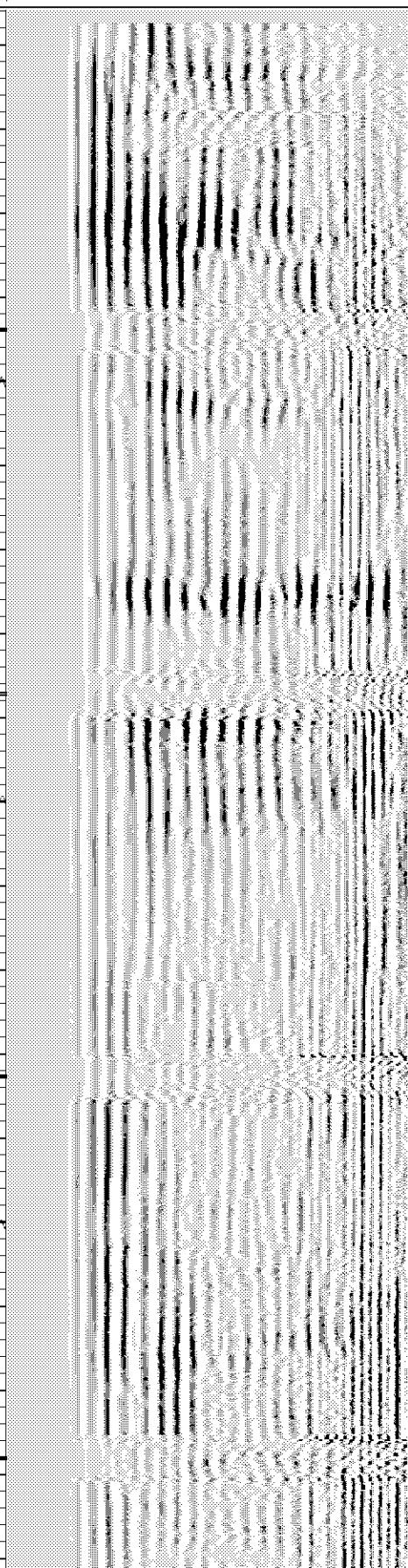
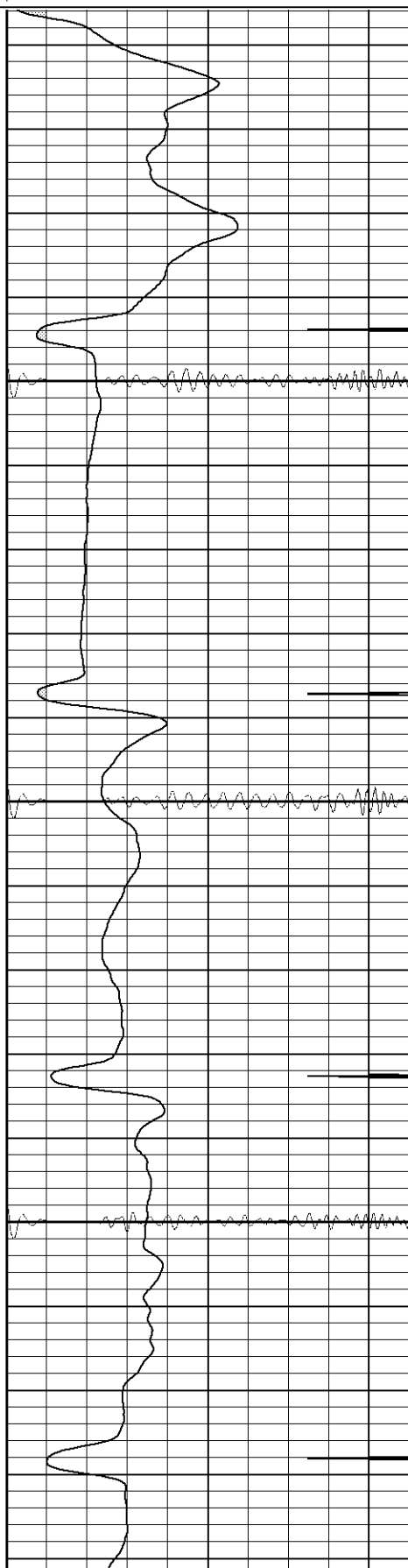
200	Variable Density	1200
-----	------------------	------

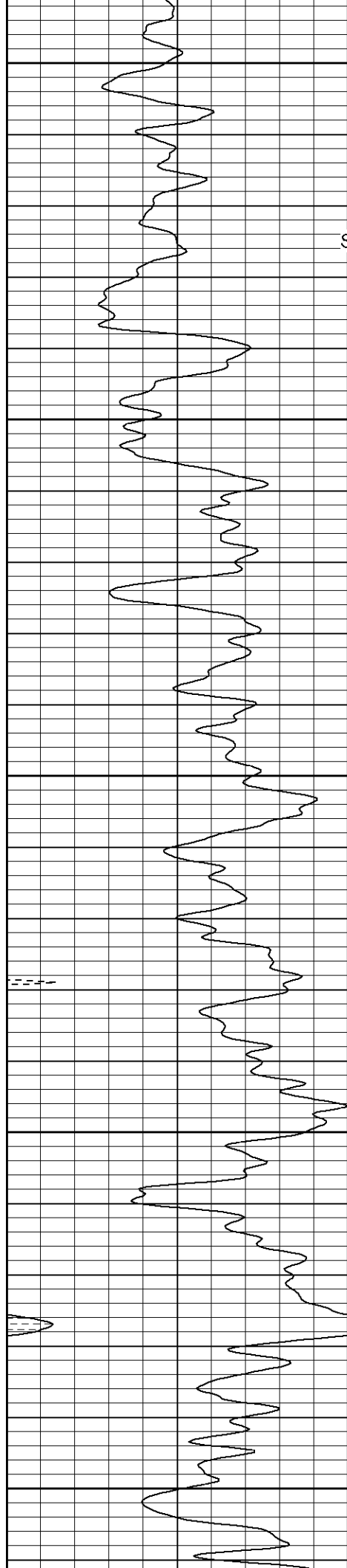


50

100

150





200

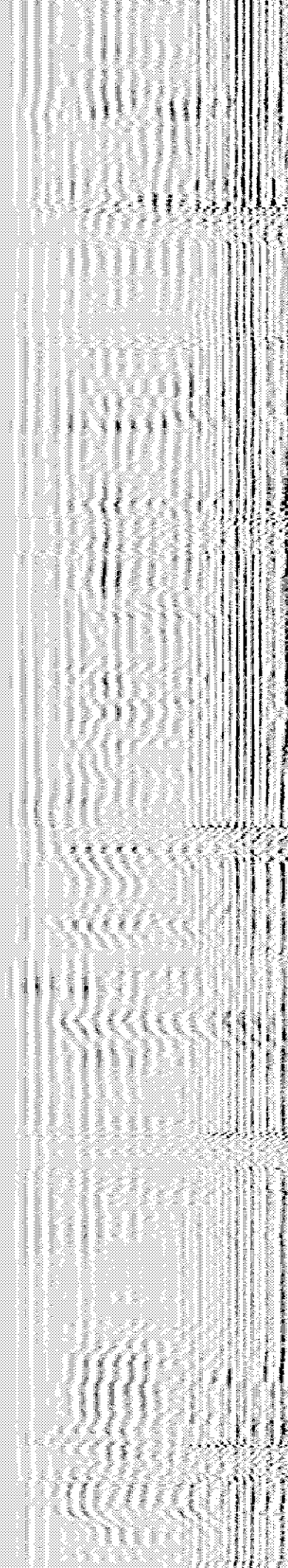
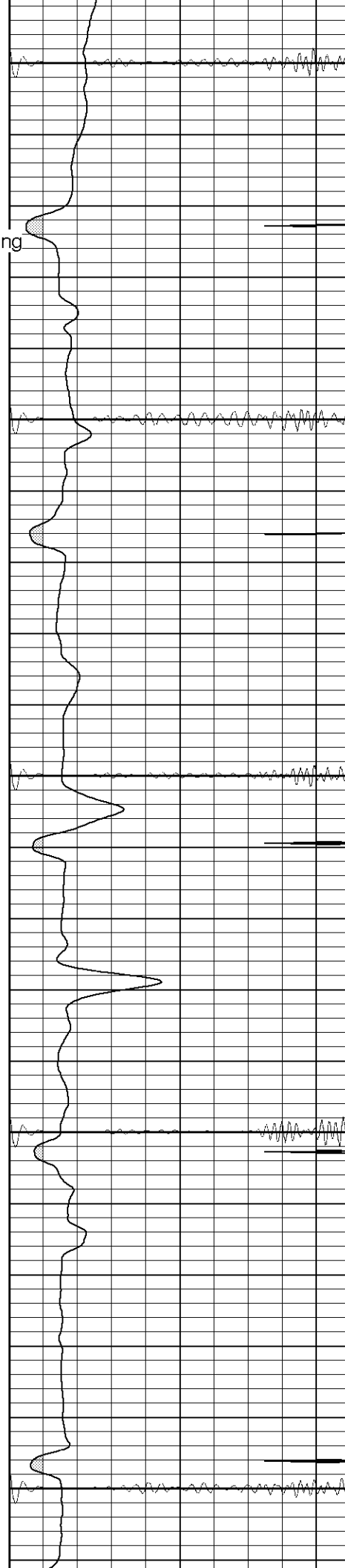
Surface Casing

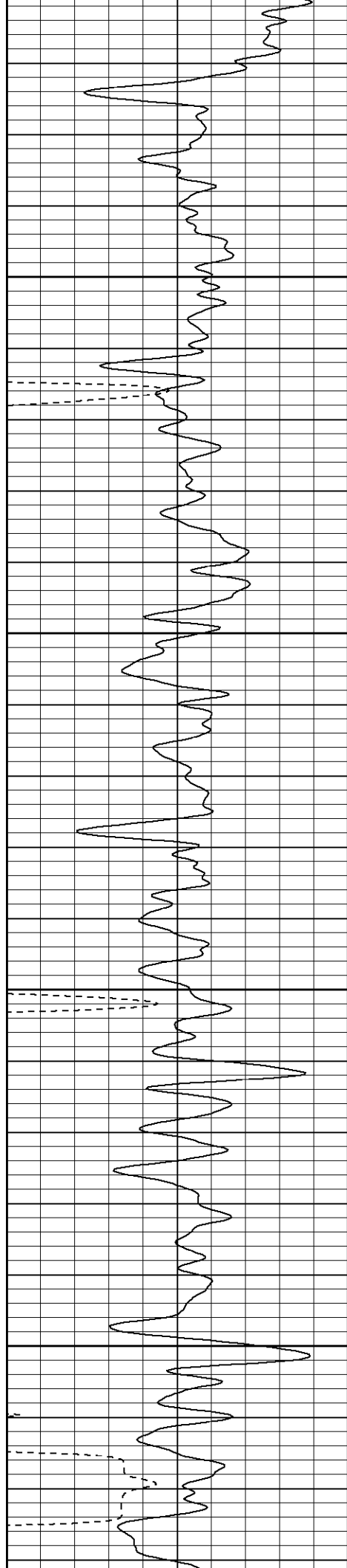
250

300

350

400



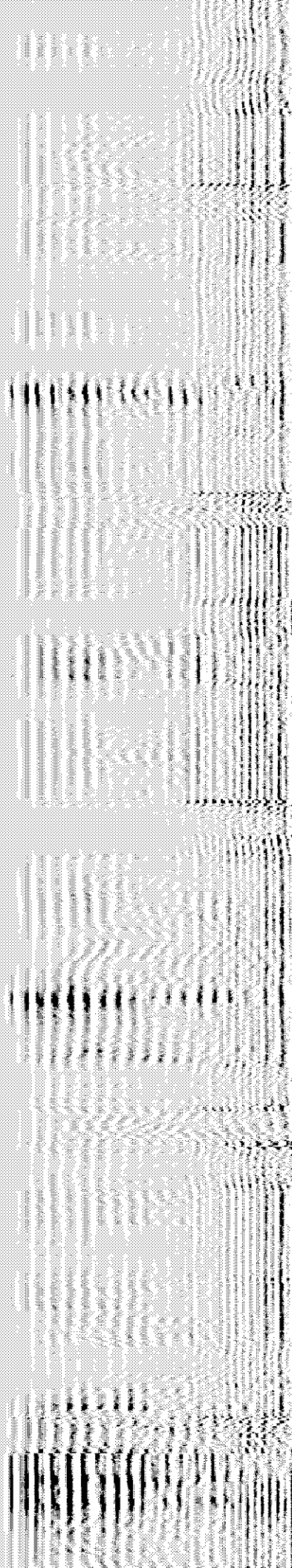
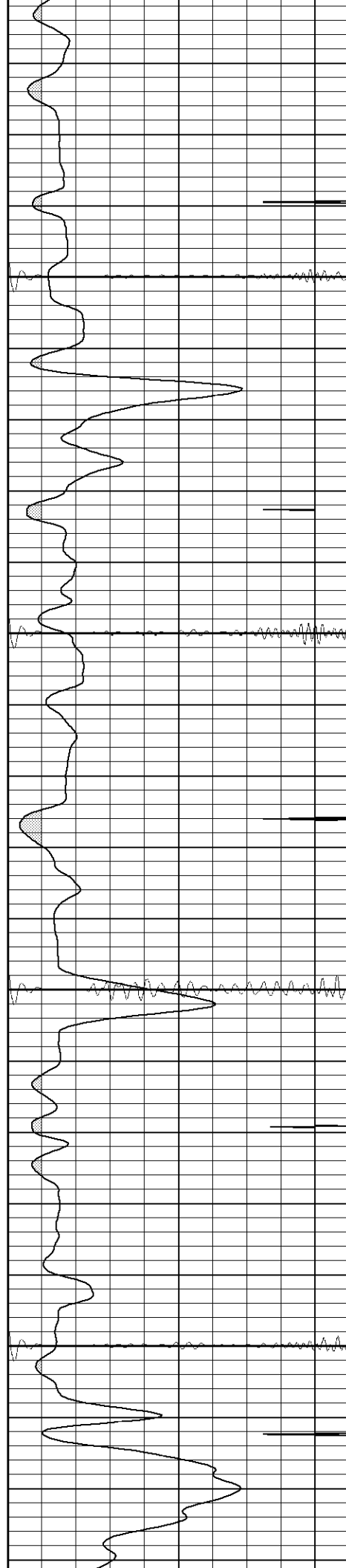


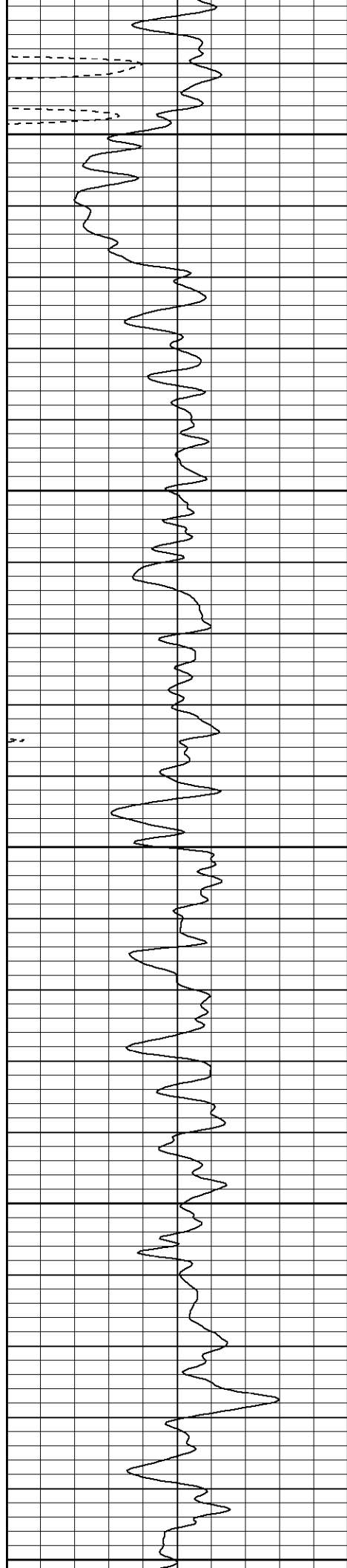
450

500

550

600





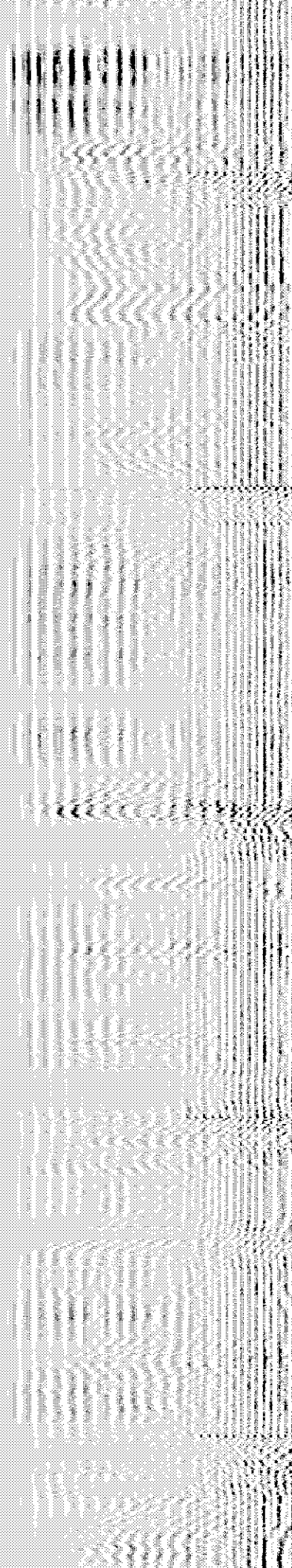
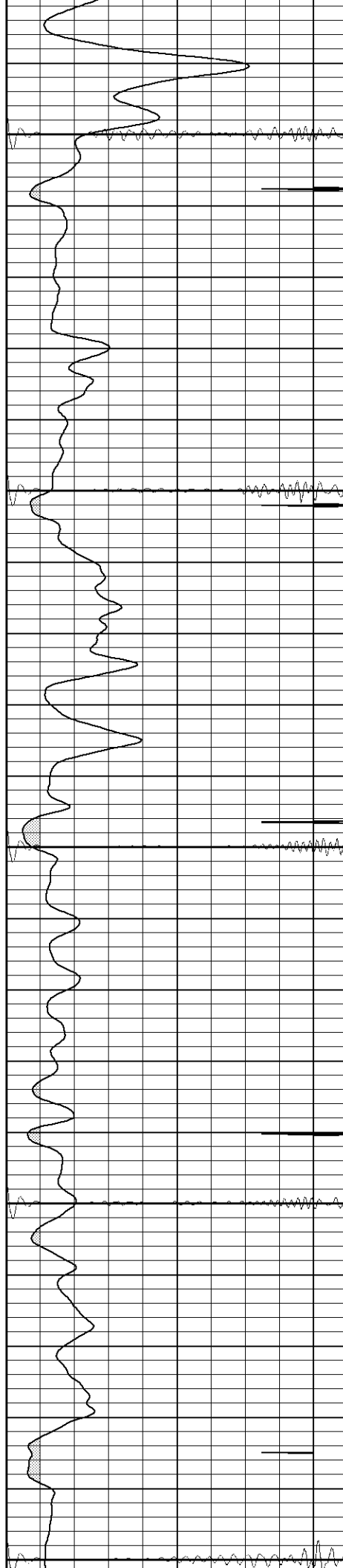
650

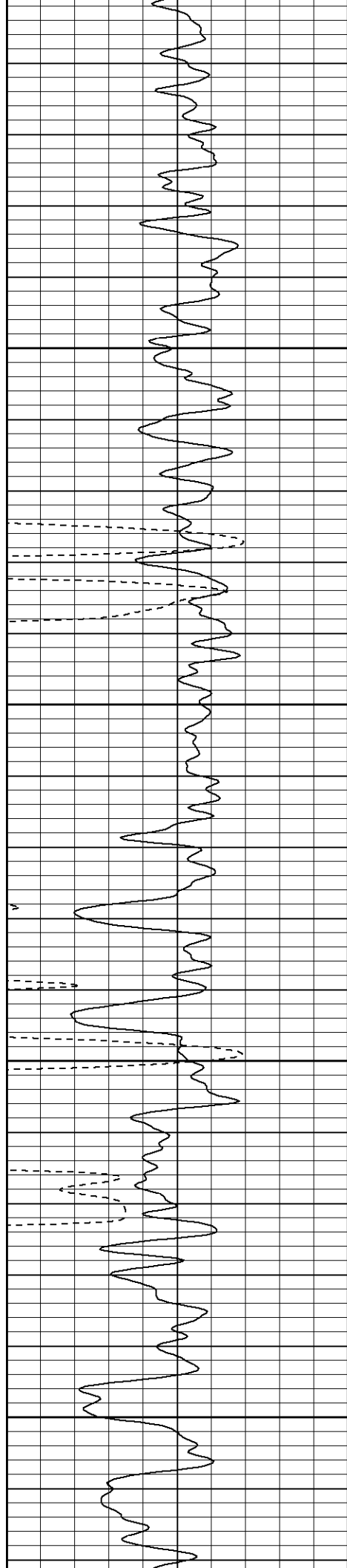
700

750

800

850



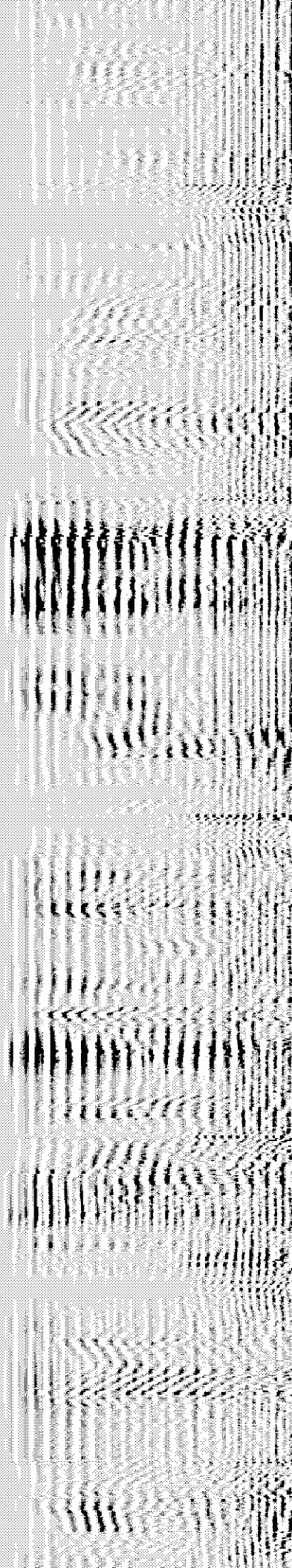
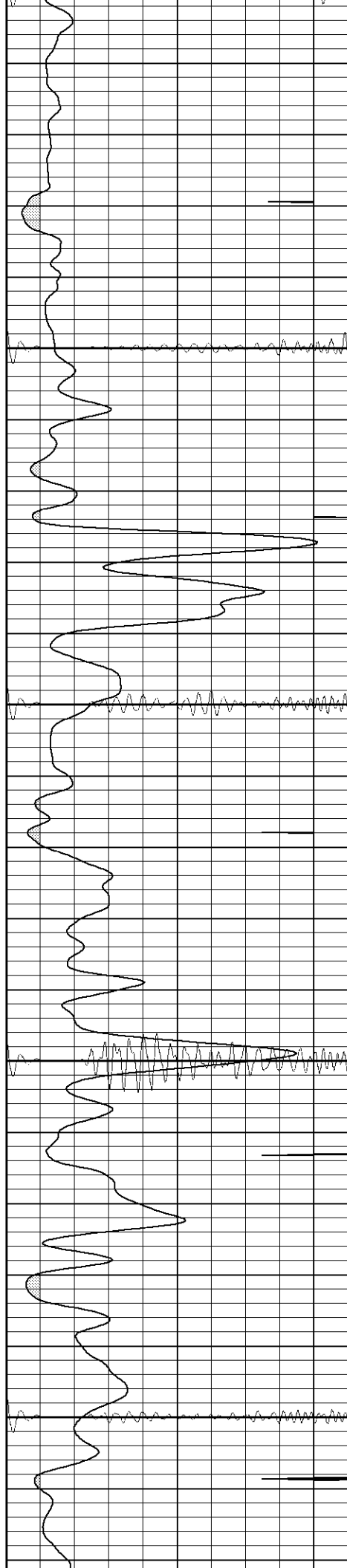


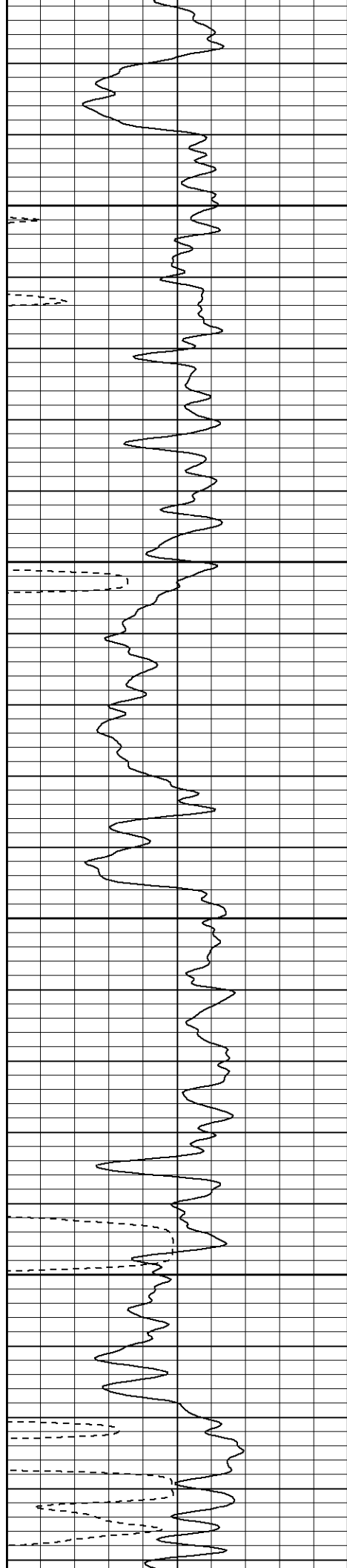
900

950

1000

1050



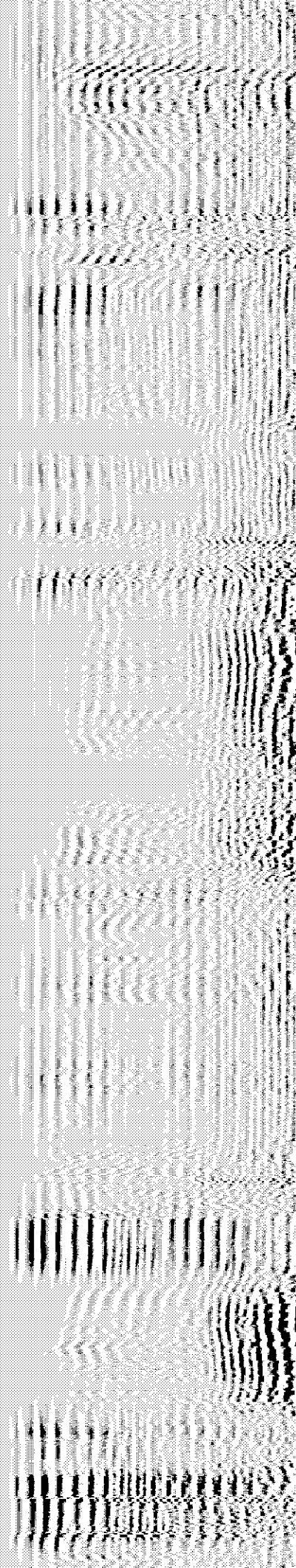
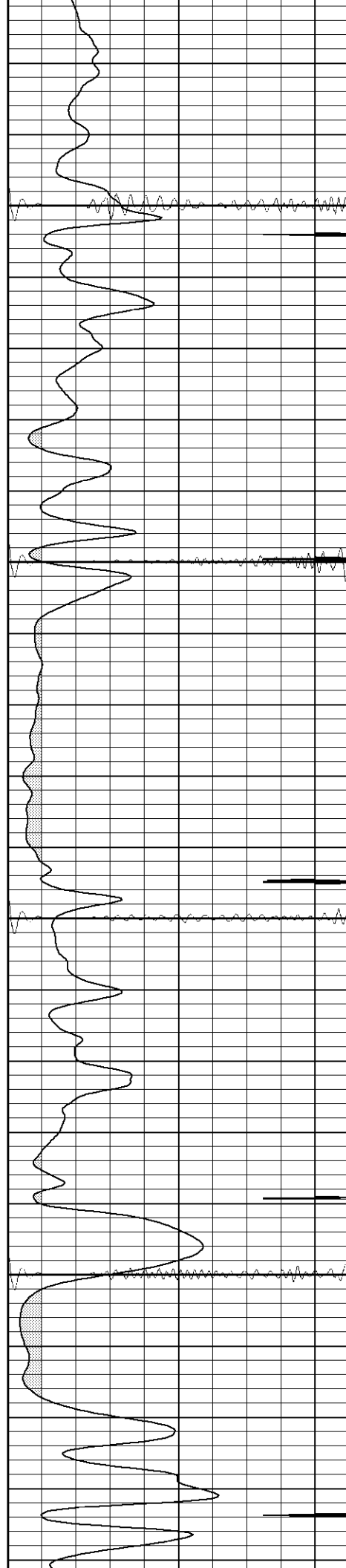


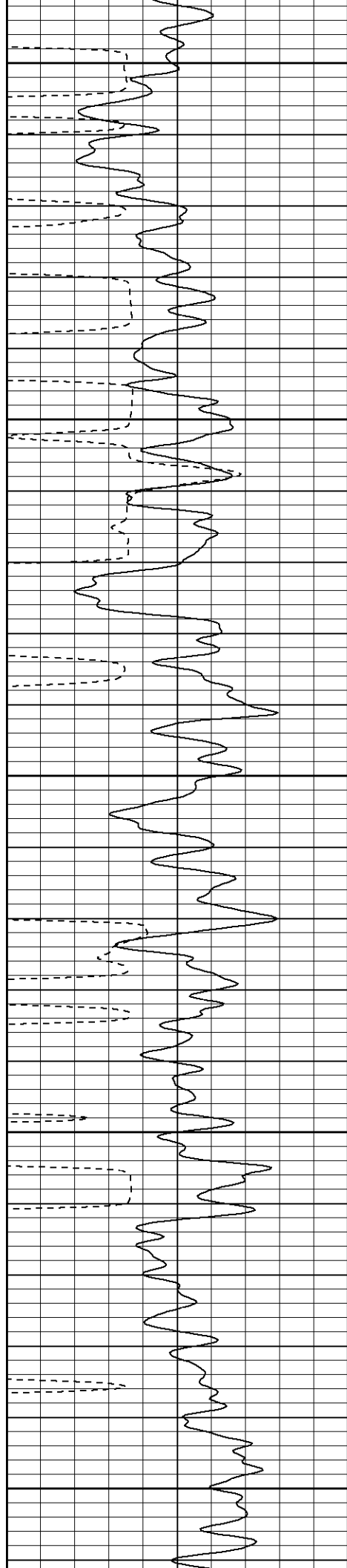
1100

1150

1200

1250





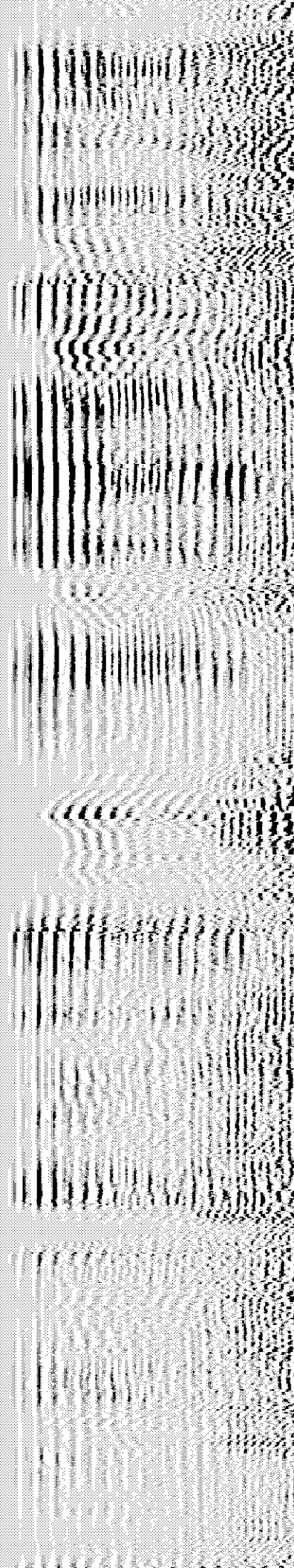
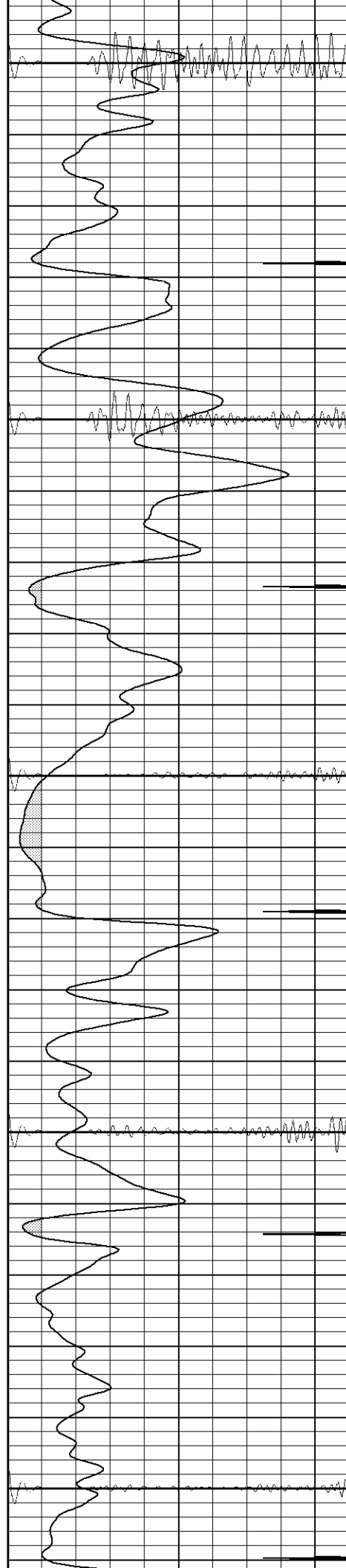
1300

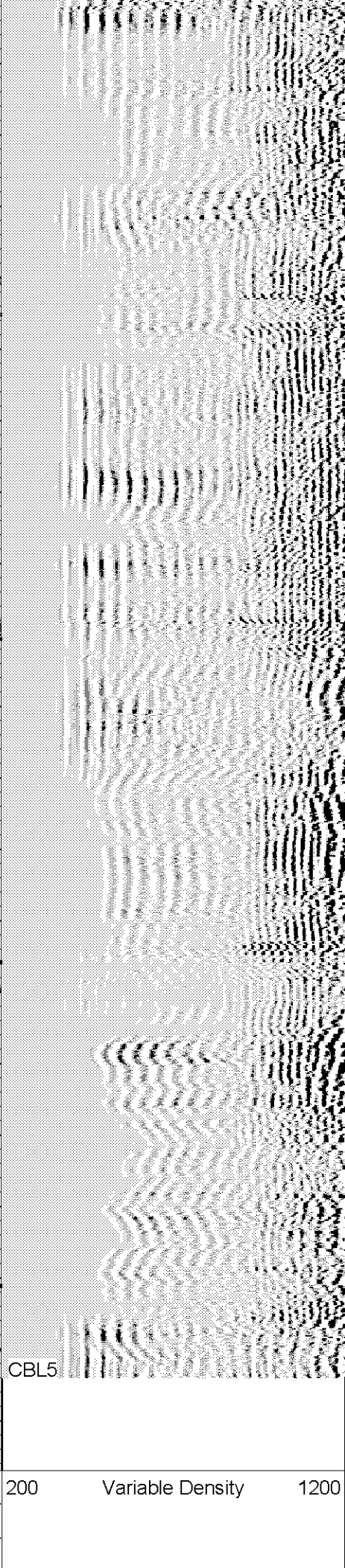
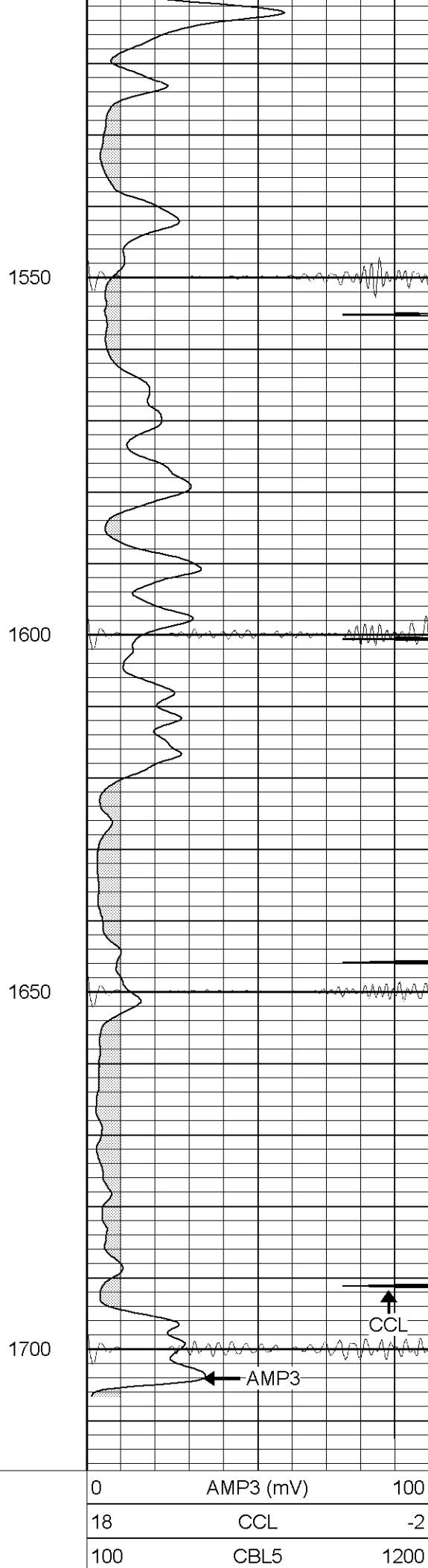
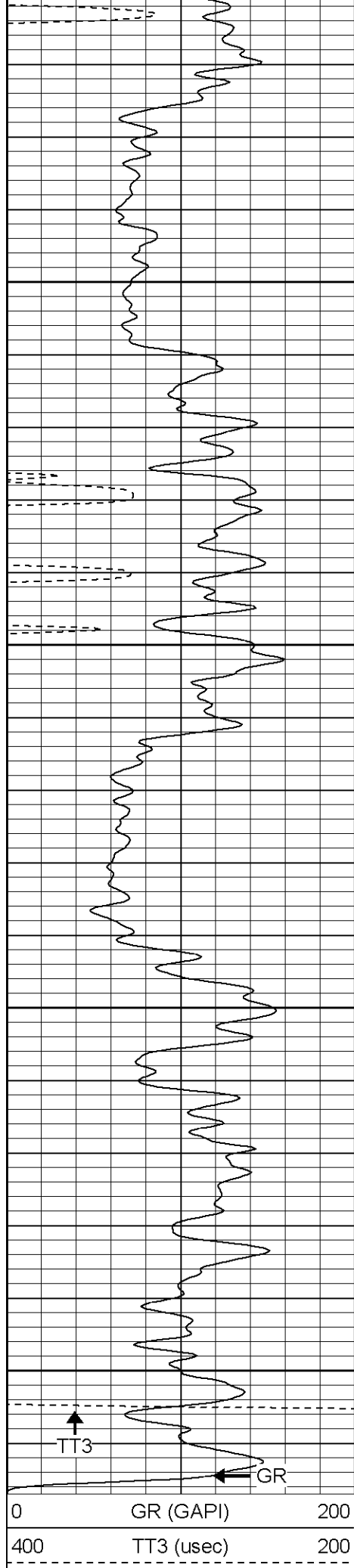
1350

1400

1450

1500





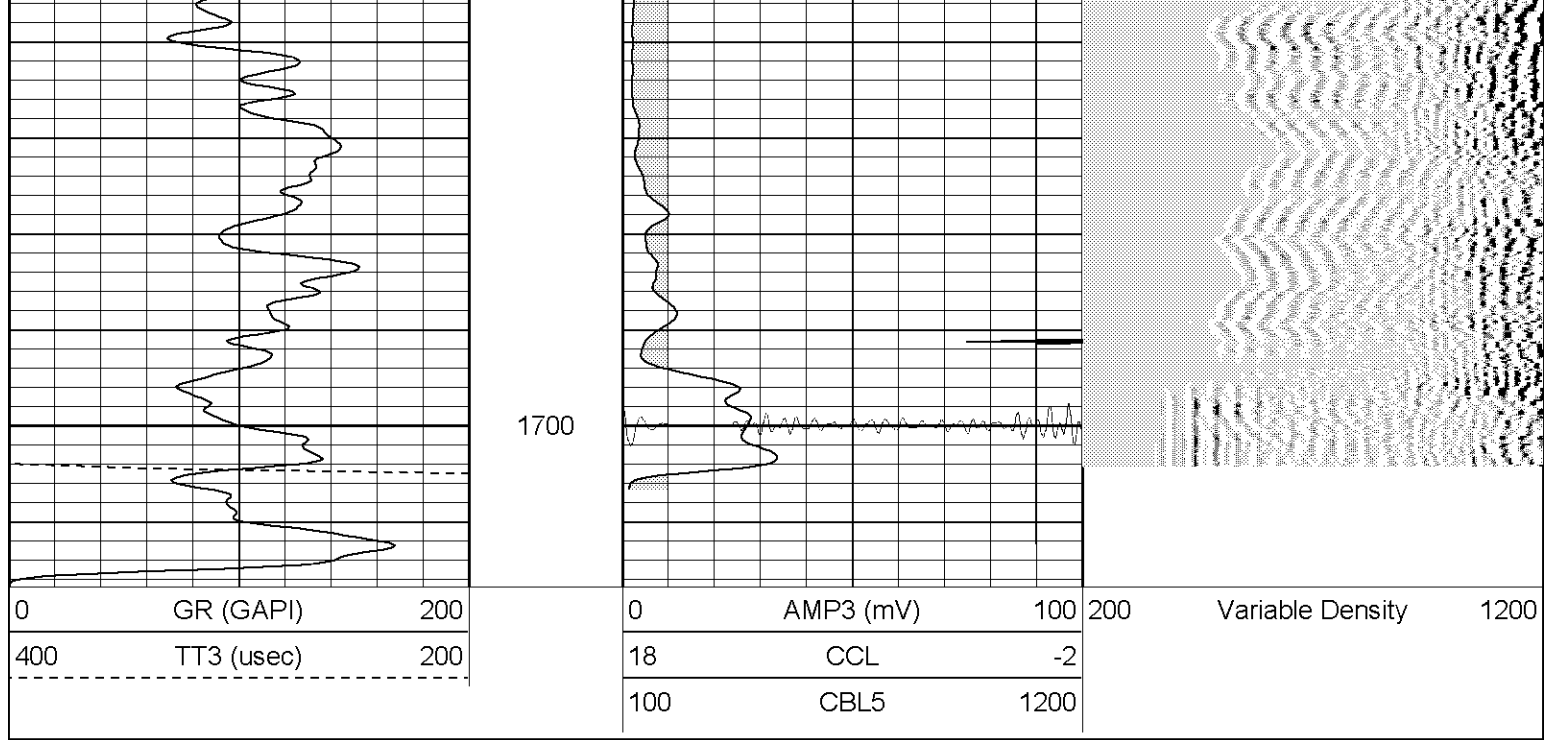
Variable Density

1200

Patterson

Repeat Section

Database File: hr1601jan0906b.db
Dataset Pathname: pass1.1
Presentation Format: cblrt
Dataset Creation: Mon Jan 09 10:46:30 2006 by Cole Morris 7.0 STD One



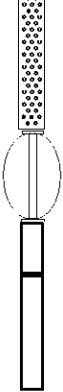
Gamma Ray Calibration Report

Serial Number: 2.75
 Tool Model: Titan2.75
 Performed: Mon Oct 31 15:07:35 2005
 Calibrator Value: 1.0 GAPI
 Background Reading: 0.0 cps
 Calibrator Reading: 1.0 cps
 Sensitivity: 0.9500 GAPI/cps

Cement Bond Log Calibration Report

Serial Number: Titan4
 Tool Model: T4
 Performed: Tue Dec 13 11:15:51 2005
 Depth: 1421.41 ft
 Casing Diameter: 5.5 in
 3' Spacing 5' Spacing
 Signal Zero: 1 mV
 Calibrated Amplitude: 85 mV
 Reading at Signal Zero: -0.01 V
 Reading in Free Pipe: 1.35 V
 Gain: 61.7647
 Offset: 1.61765

Sensor	Offset (ft)	Schematic	Description	Len (ft)	OD (in)	Wt (lb)
CHD	20.38		None	0.75	1.50	5.00
CENT	19.63		X	3.00	1.69	25.00
WVF5	12.82		GR T4 (Titan4) Titan4	0.15	0.25	110.00

WVF3	12.02		CBL-14 (Titan4) Titan4	8.15	2.25	110.00
WVF3	11.82					
CENT	8.48		X	3.00	1.69	25.00
CCL	4.27		CCL-Titan2.75 (2.75)	1.71	2.75	15.00
GR	1.42		GR-Titan2.75 (2.75)	3.77	2.75	40.00
<p>Dataset: /field/well/run1/_plots/_jobs_/cbl</p> <p>Total Length: 20.38 ft</p> <p>Total Weight: 220.00 lb</p> <p>O.D. 2.75 in</p>						