



SUPERIOR
Black Lick, Pa.
Mercer, Pa.
Wooster, Oh.
Cleveland, Ok.
Trinidad, Co.

COMPENSATED DENSITY NEUTRON LOG

Company	XTO Energy Inc.		
Well	Golden Eagle 32-02		
Field	Purgatoire River		
County	Las Animas	State	Colorado
Location:	API # : 05 071 09113 00		Other Services
1317' FNL & 1906' FEL		dil	
Permanent Datum	SEC 32 TWP 33S RGE 67W	Elevation	7392'
Log Measured From	Ground Level	Elevation	7392'
Drilling Measured From	Ground Level	Elevation	7392'
Date	3-19-07		
Run Number	Two		
Depth Driller	2035'		
Depth Logger	2032'		
Bottom Logged Interval	2030'		
Top Log Interval	Surface Casing		
Casing Driller	8 5/8" @ 778'		
Casing Logger	780'		
Bit Size	7 7/8"		
Type Fluid in Hole	Water		
Density / Viscosity	///		
pH / Fluid Loss	///		
Source of Sample	///		
Rm @ Meas. Temp	///		
Rmf @ Meas. Temp	///		
Rmc @ Meas. Temp	///		
Source of Rmf / Rmc	///		
Rm @ BHT	///		
Time Circulation Stopped	6:30 P.M.		
Time Logger on Bottom	9:15 P.M.		
Maximum Recorded Temperature	112 DEG F		
Equipment Number	T701		
Location	Trinidad		
Recorded By	M. Norton		
Witnessed By	Mr. Don Johnson		

>>> Fold Here >>>

All interpretations are opinions based on inferences from electrical or other measurements and we cannot and do not guarantee the accuracy or correctness of any interpretation, and we shall not, except in the case of gross or willful negligence on our part, be liable or responsible for any loss, costs, damages, or expenses incurred or sustained by anyone resulting from any interpretation made by any of our officers, agents or employees. These interpretations are also subject to our general terms and conditions set out in our current Price Schedule.

Comments

Density Neutron Porosity Presented On Sandstone Matrix.
ABHV Calculated For 5 1/2" Casing
Well Directions:
Second Bosque entrance four miles past weston turn left, first left (old railroad tracks)
first right, at Y stay left, at T stay right to location.
Neutron Porosity Invalid from 1062' to 1168' due to foam.



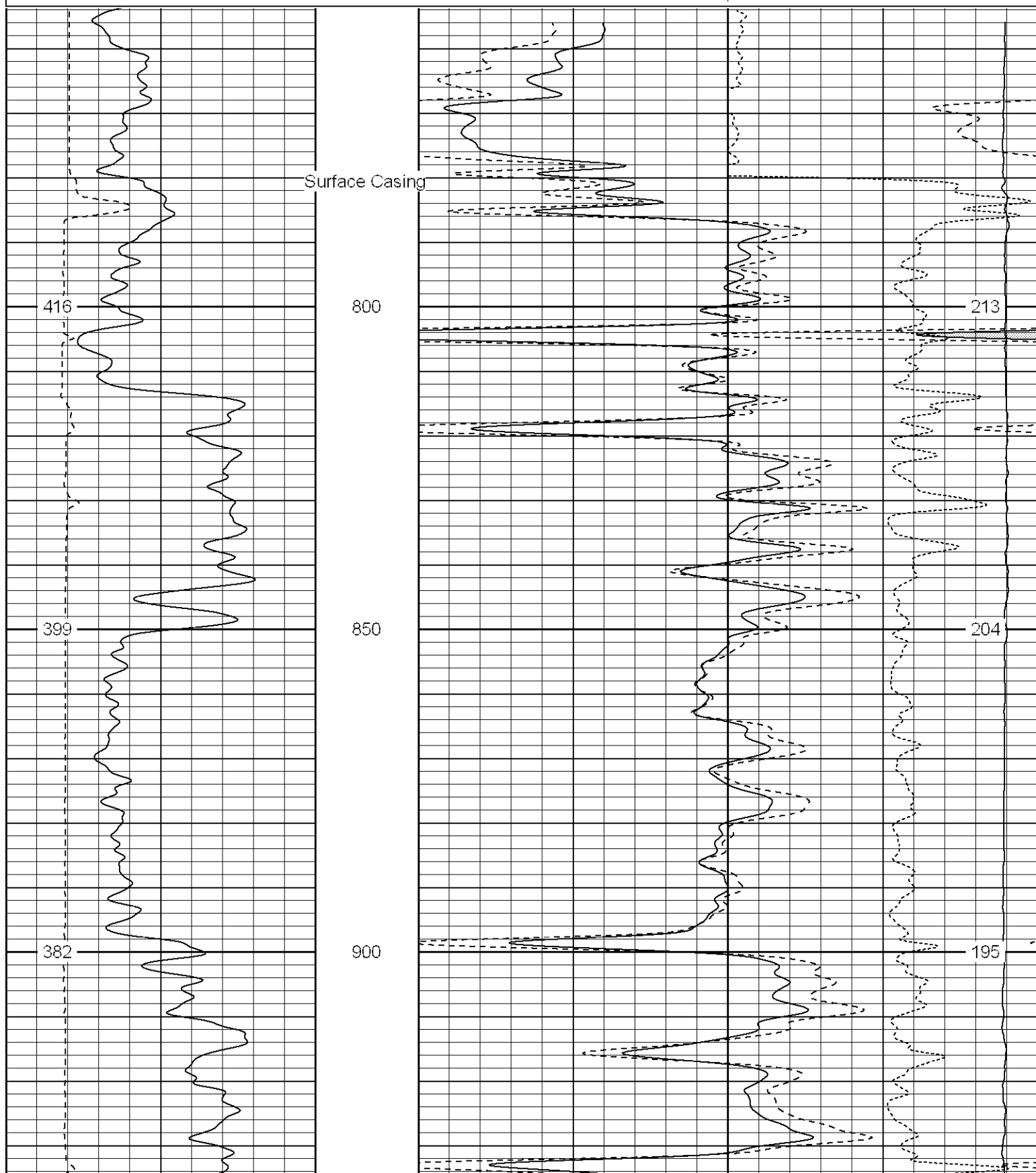
SUPERIOR
Black Lick, Pa.
Mercer, Pa.
Wooster, Oh.
Cleveland, Ok.
Trinidad, Co.

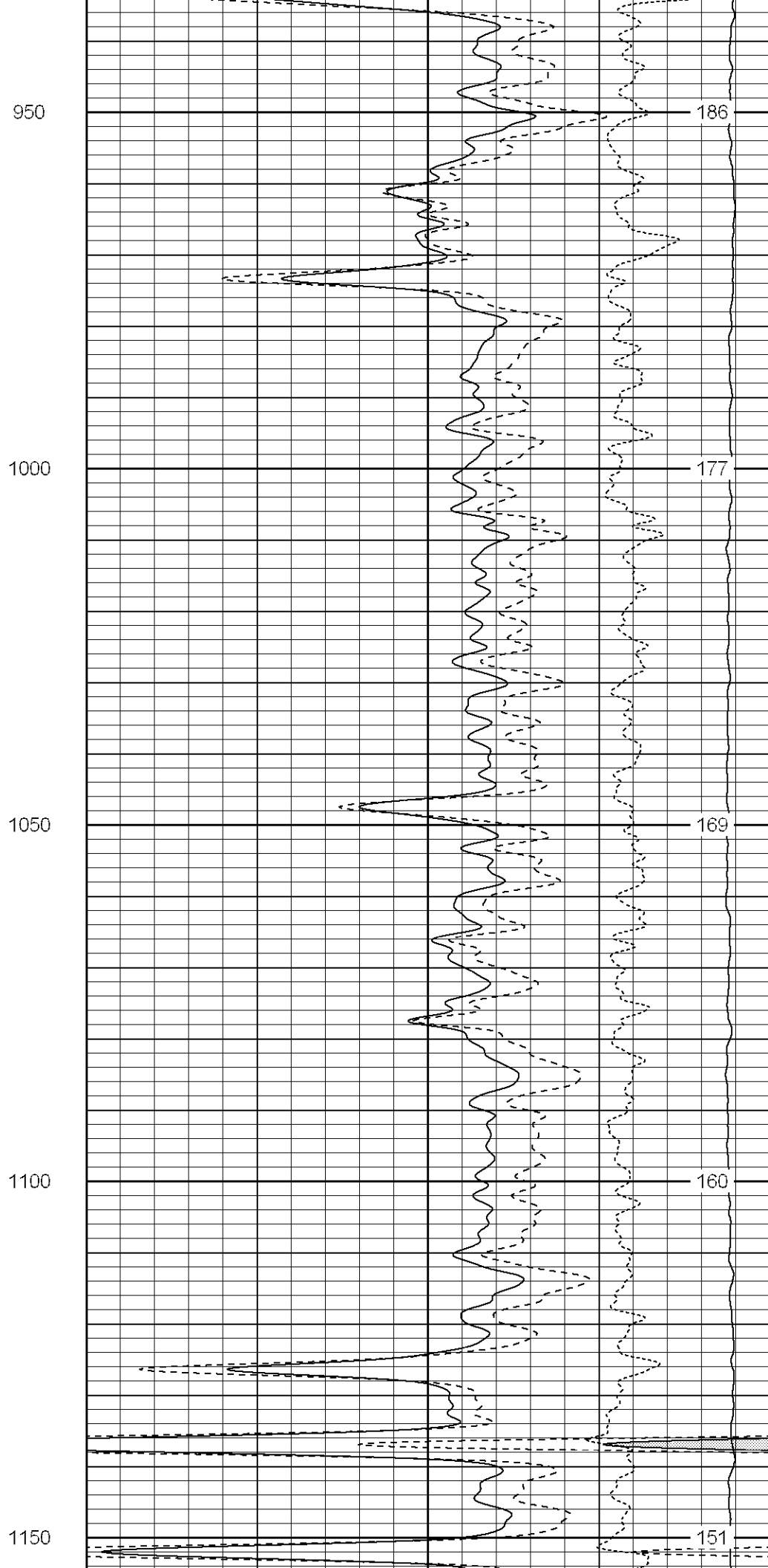
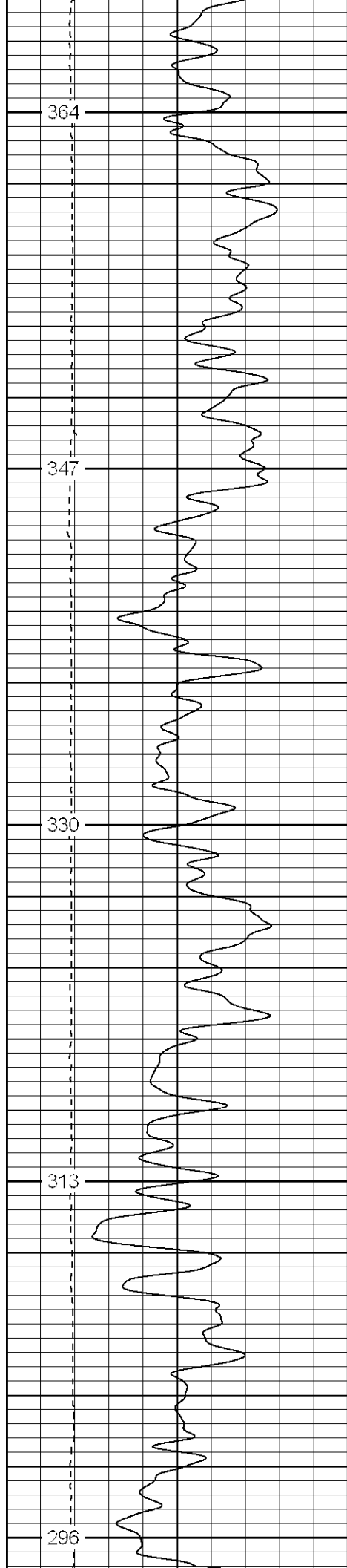
Main Pass

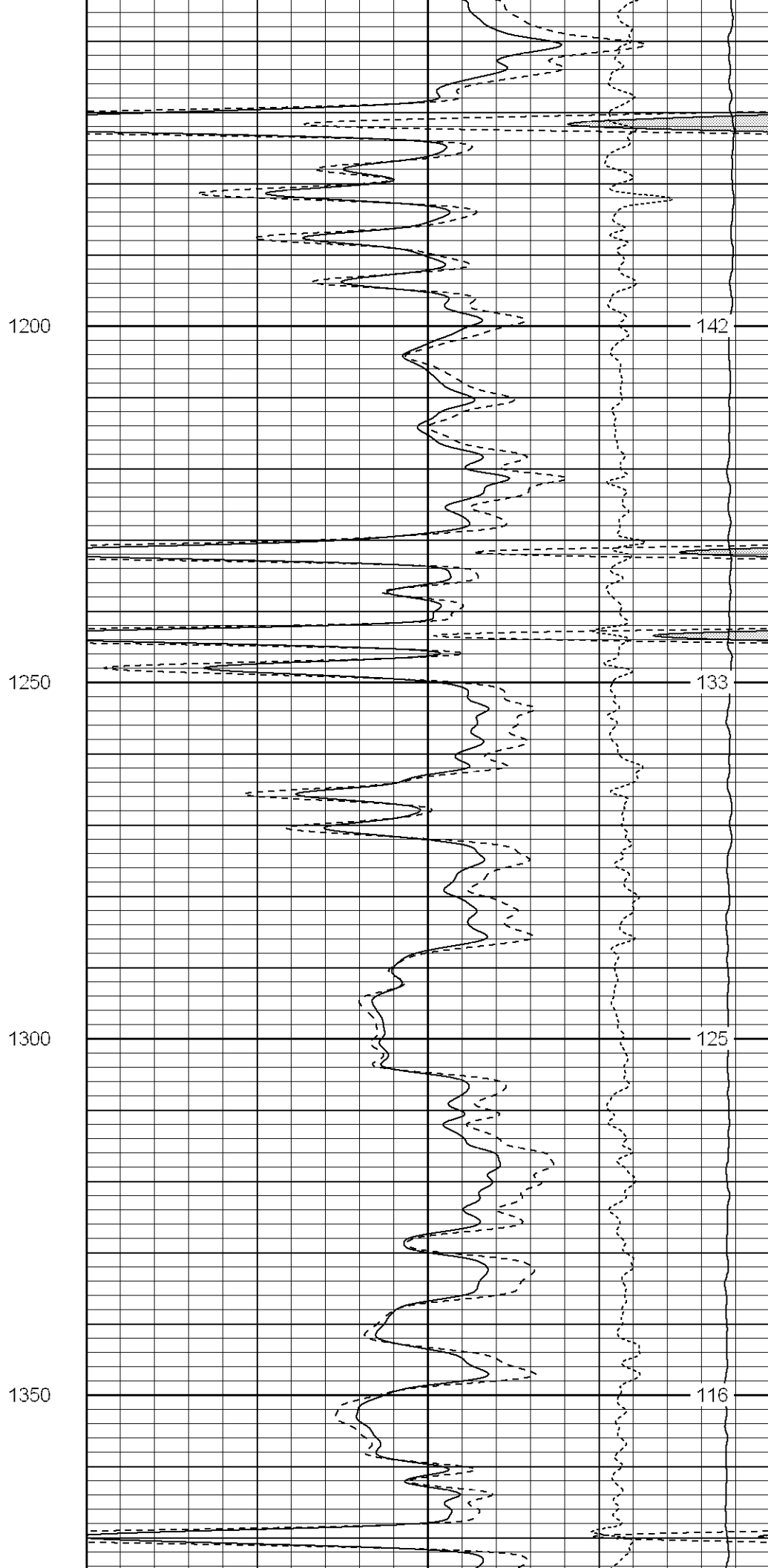
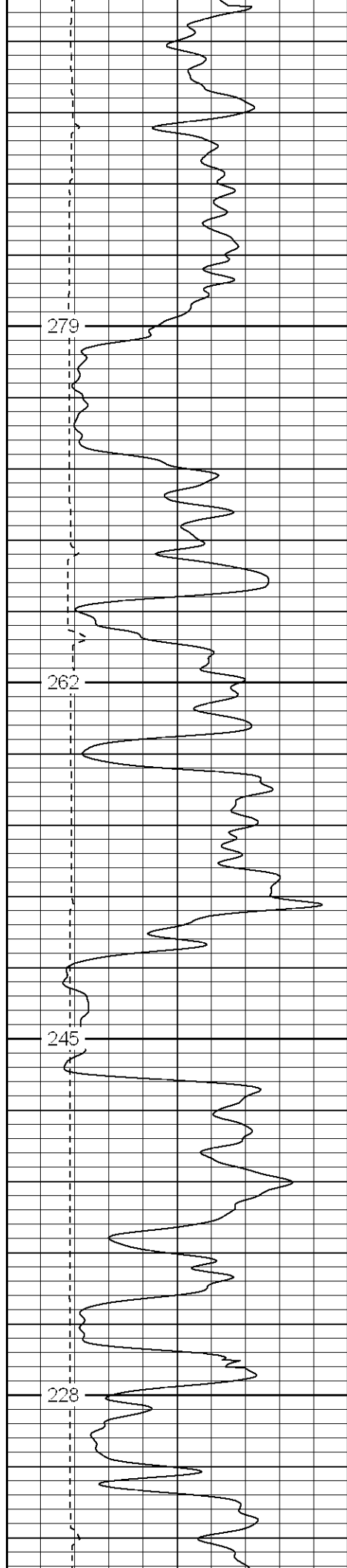
Database File: xtoge3202.db
Dataset Pathname: pass4.1
Presentation Format: cdl
Dataset Creation: Mon Mar 19 22:41:49 2007 by Calc Open-Cased 061129
Charted by: Depth in Feet scaled 1:240

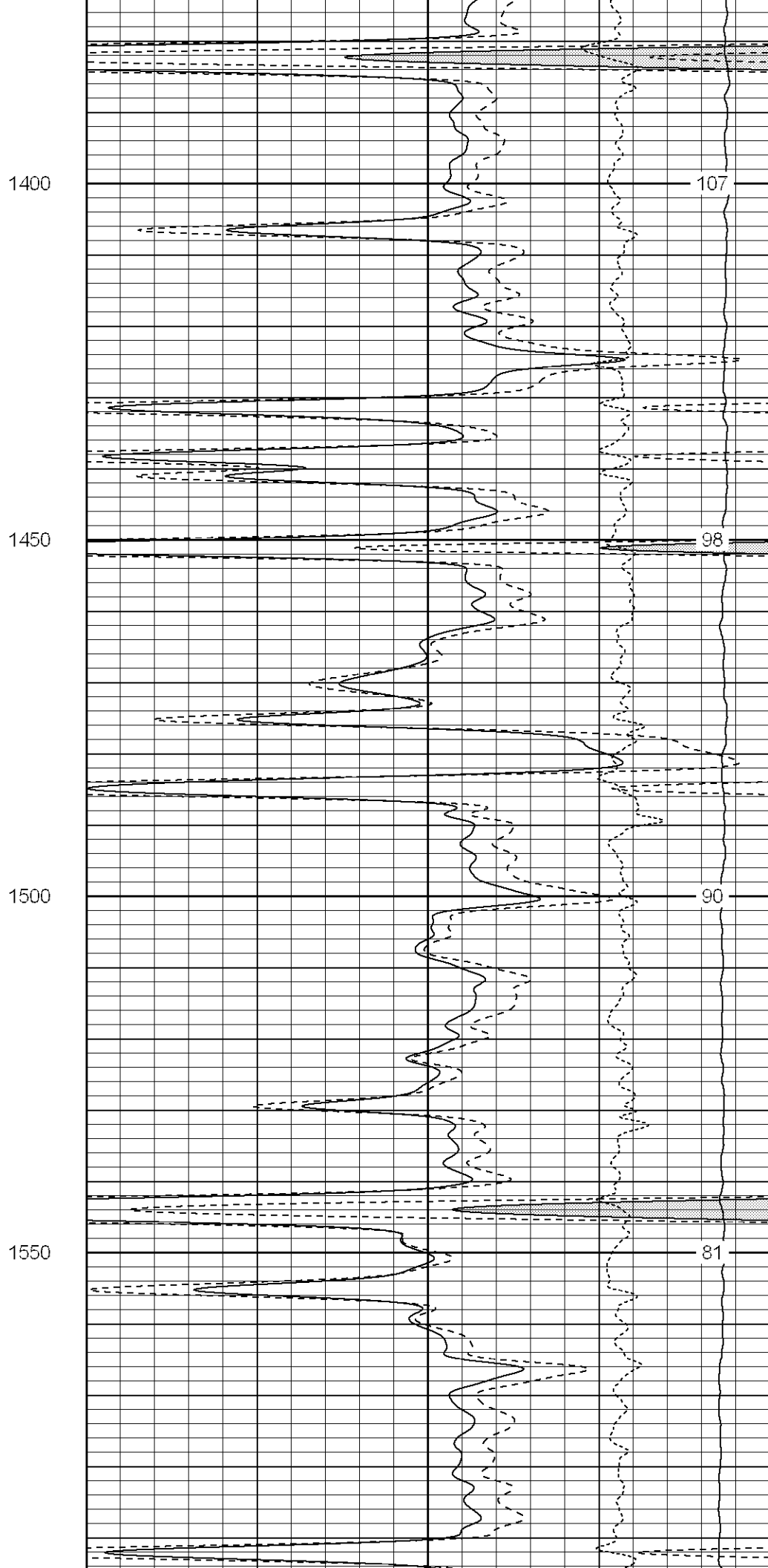
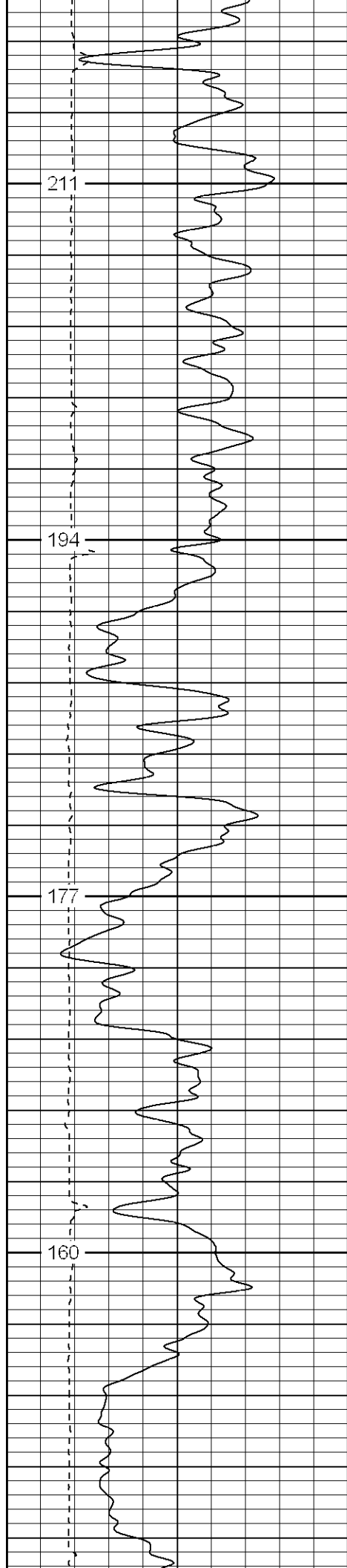
0	GR (GAPI)	200
6	DCAL (in)	16

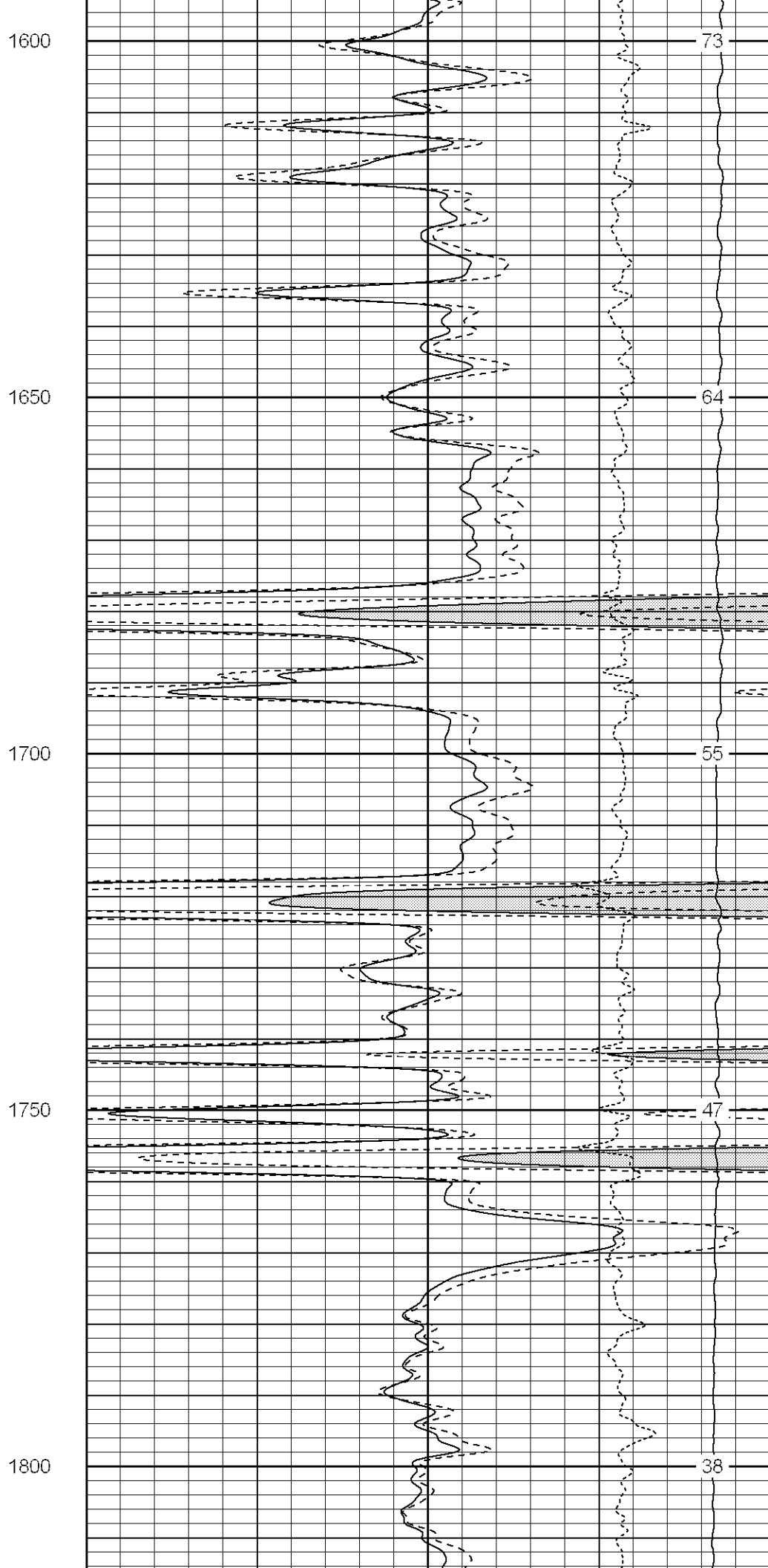
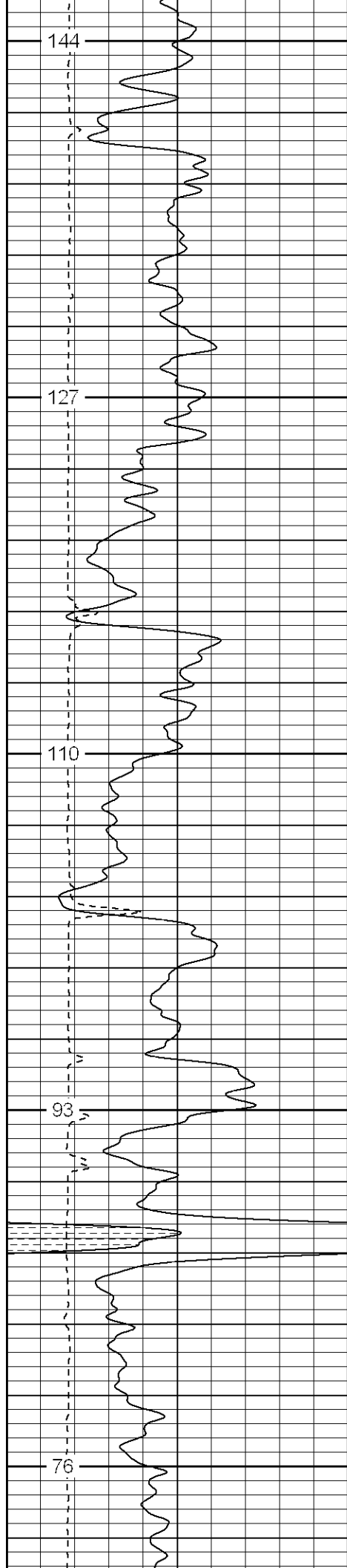
1	RHOB (g/cc)	2
30	DPOR (pu)	-10
-0.5	RHOC (g/cc)	0.5
4000	LTEN (lb)	0

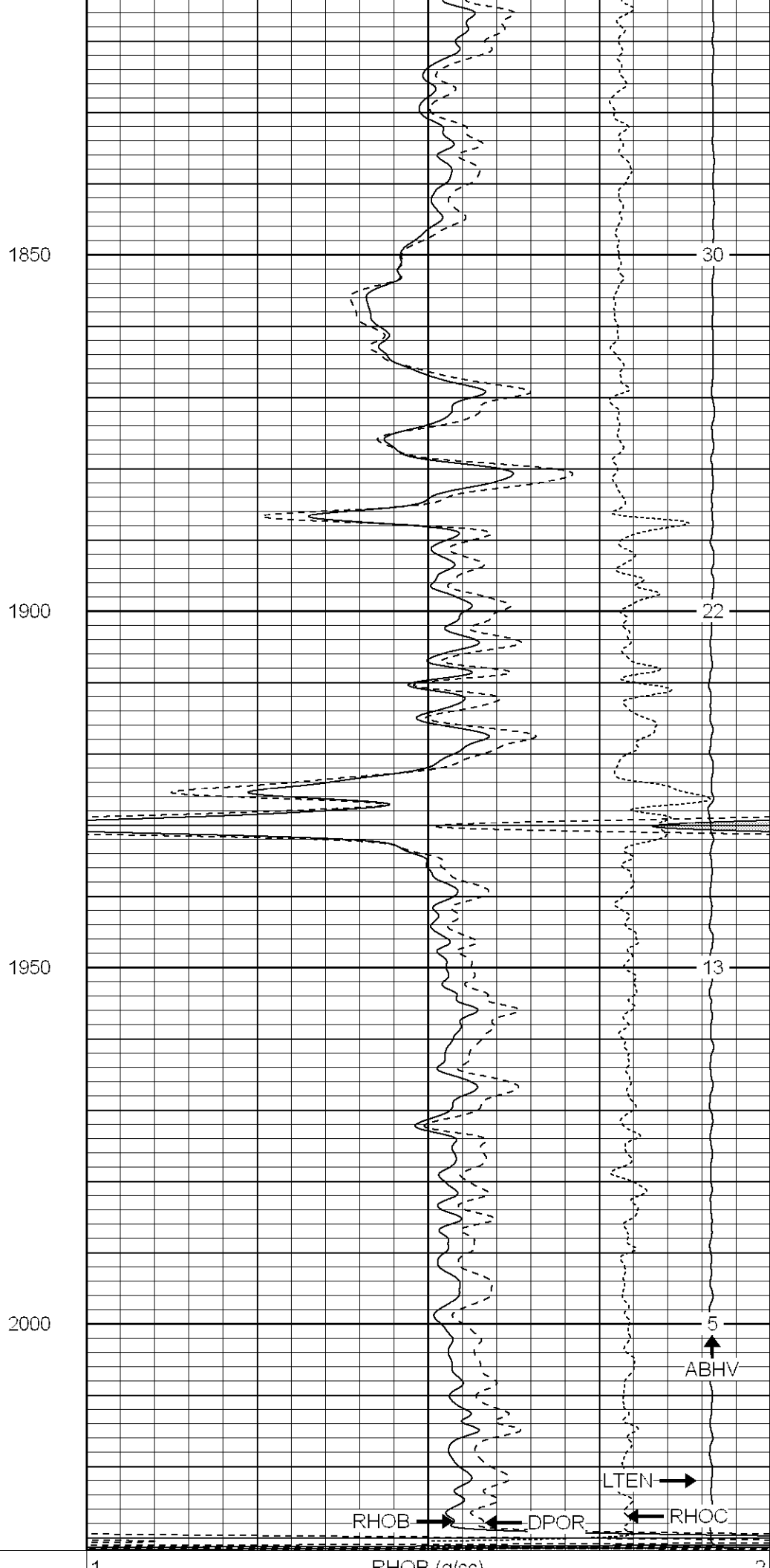
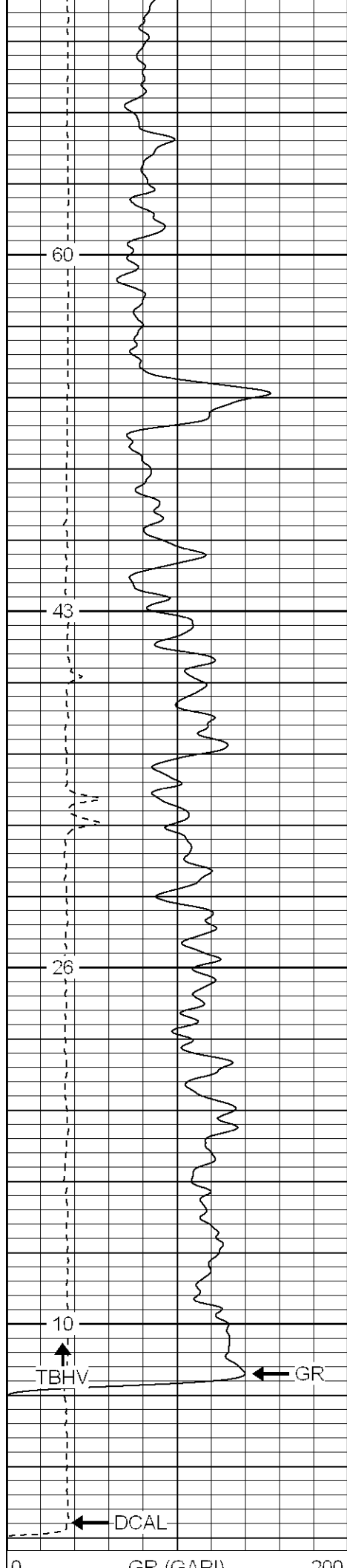












0	GR (GAPI)	200
6	DCAL (in)	16

1	RHOC (g/cc)	2
30	DPOR (pu)	-10
-0.5	RHOC (g/cc)	0.5
4000	LTEN (lb)	0



SUPERIOR

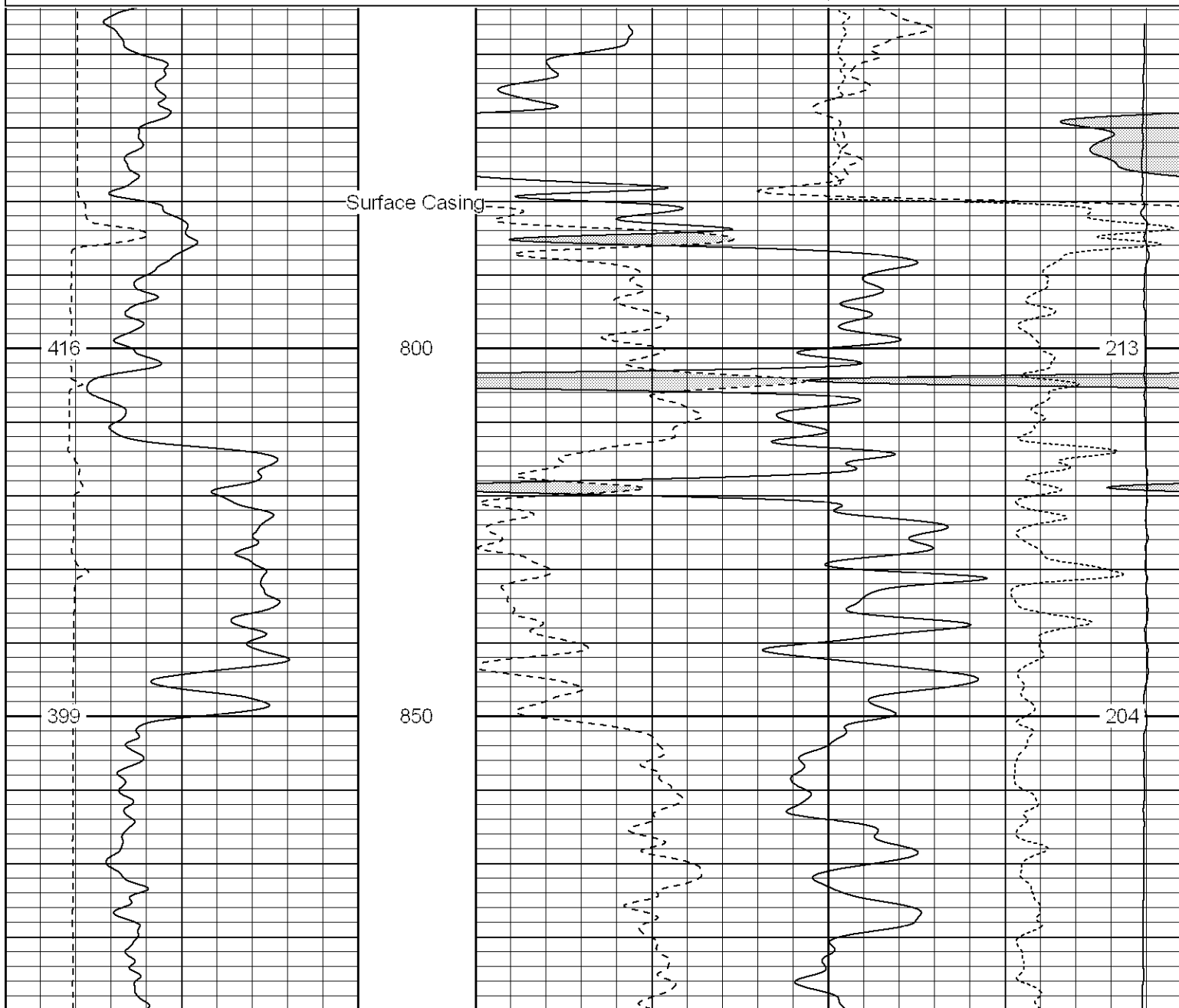
Black Lick, Pa.
Mercer, Pa.
Wooster, Oh.
Cleveland, Ok.
Trinidad, Co.

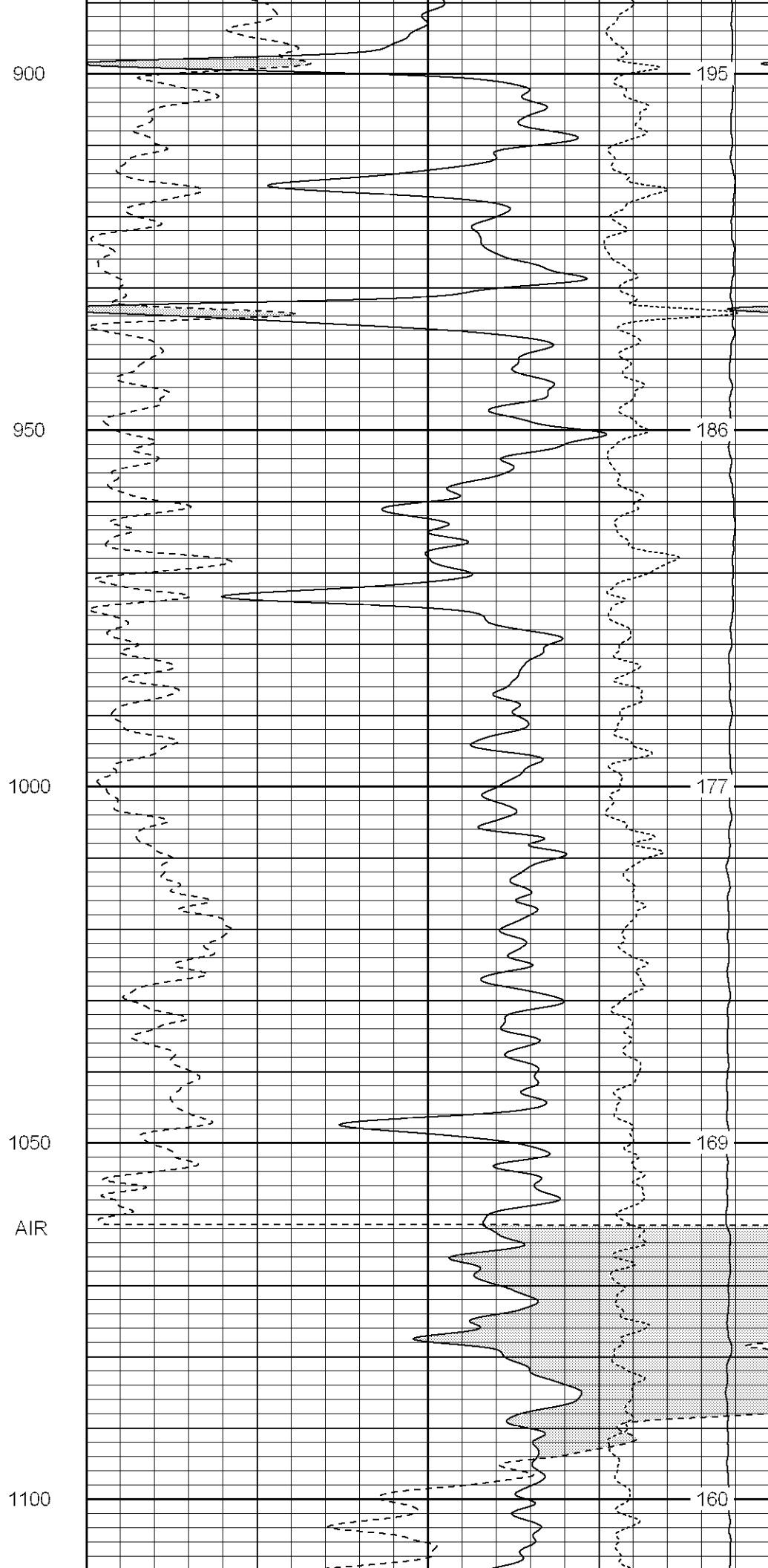
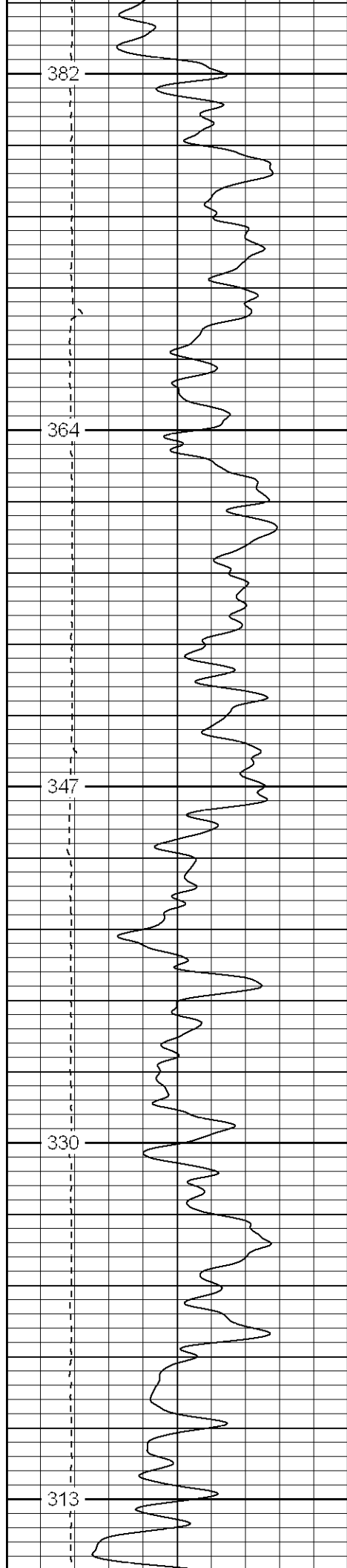
Main Pass

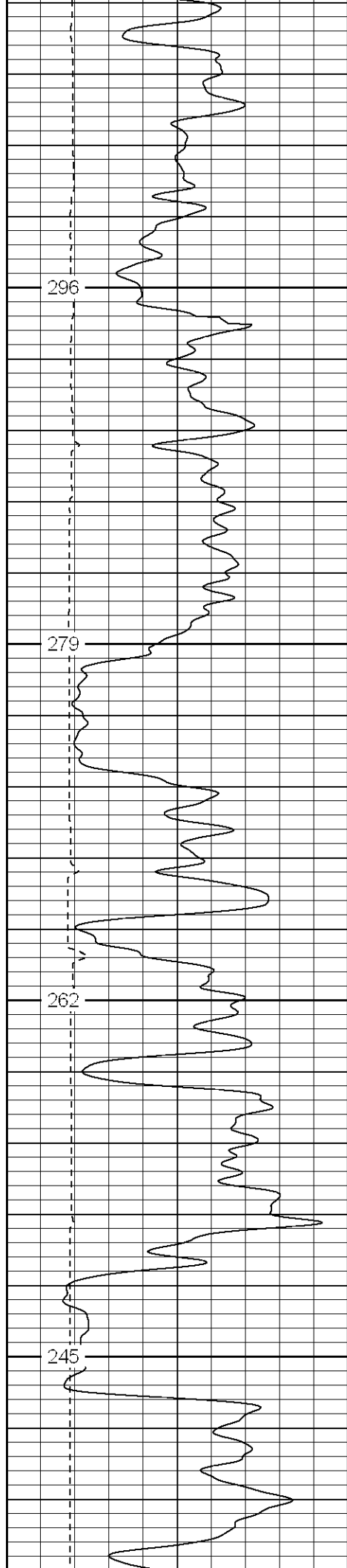
Database File: xtoge3202.db
Dataset Pathname: pass4.1
Presentation Format: cdnl
Dataset Creation: Mon Mar 19 22:41:49 2007 by Calc Open-Cased 061129
Charted by: Depth in Feet scaled 1:240

0	GR (GAPI)	200
6	DCAL (in)	16

30	NPOR (pu)	-10
30	DPOR (pu)	-10
-0.5	RHOC (g/cc)	0.5
4000	LTEN (lb)	0







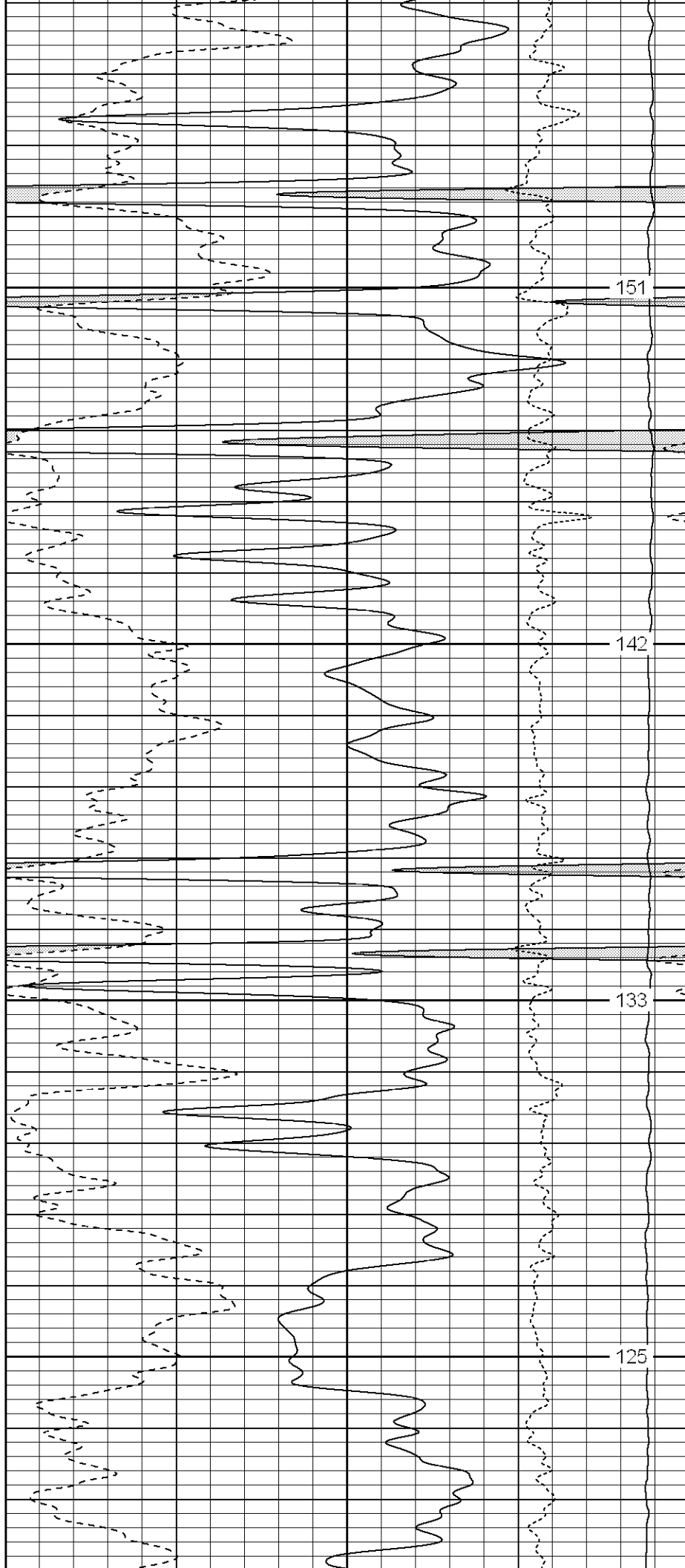
1150

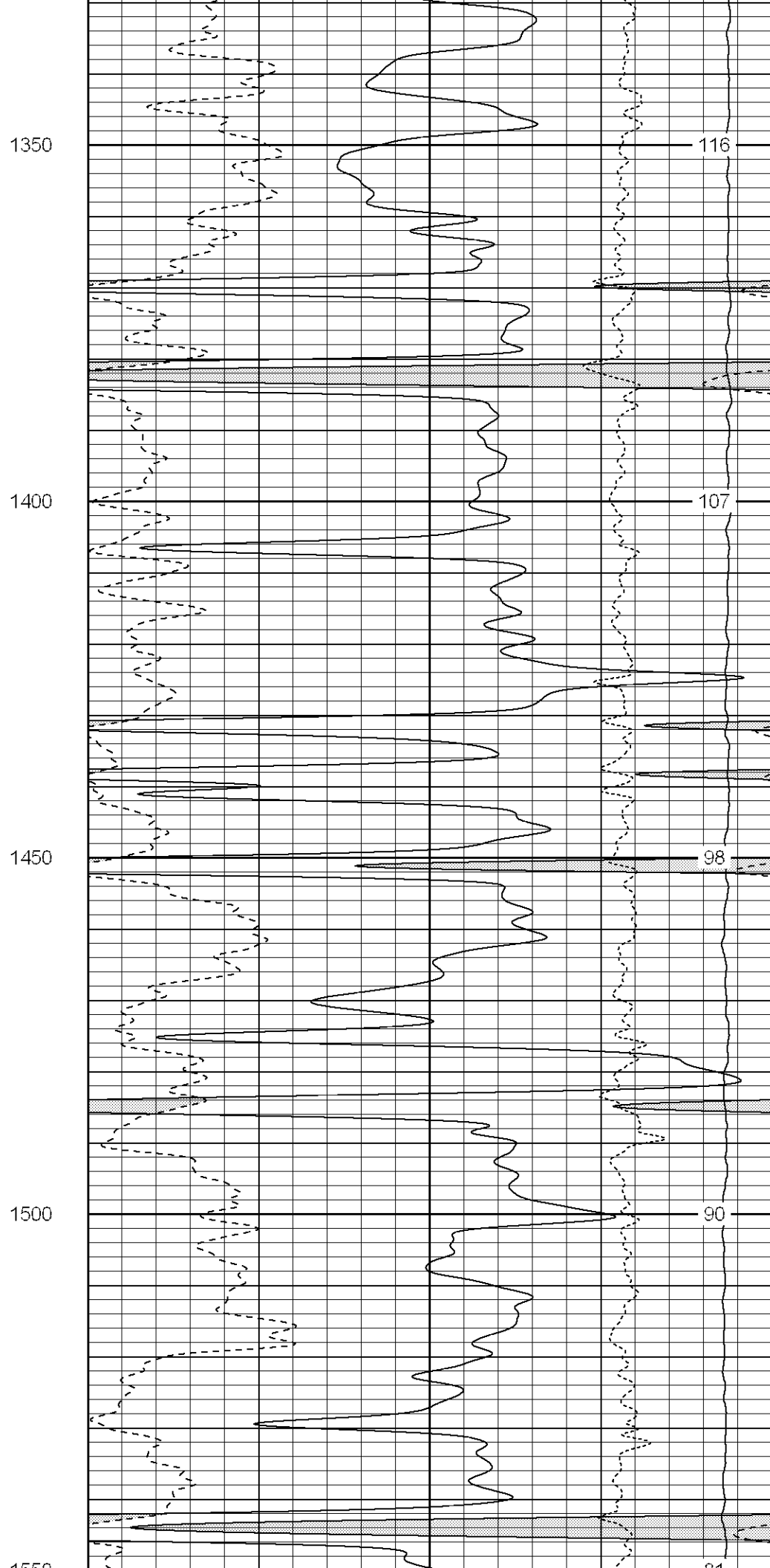
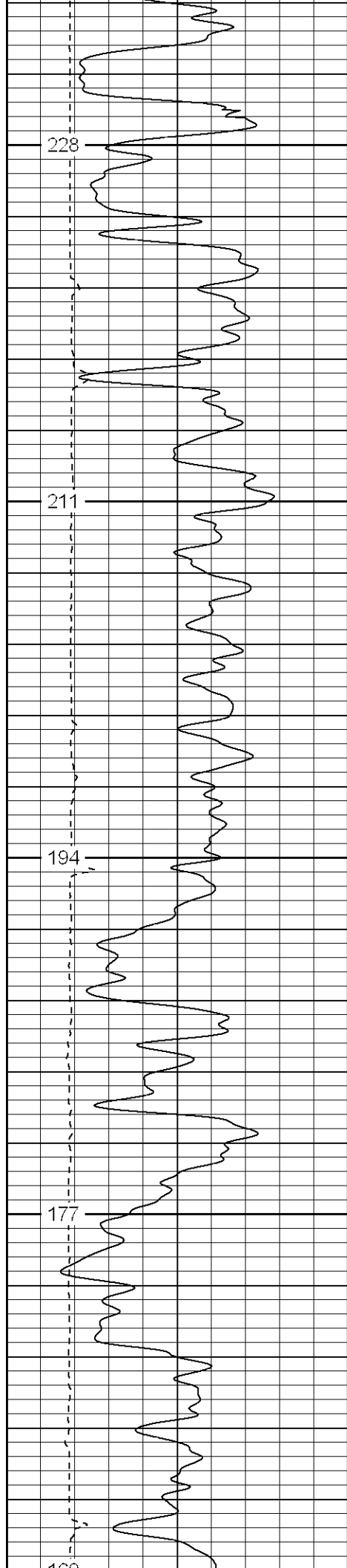
FOAM

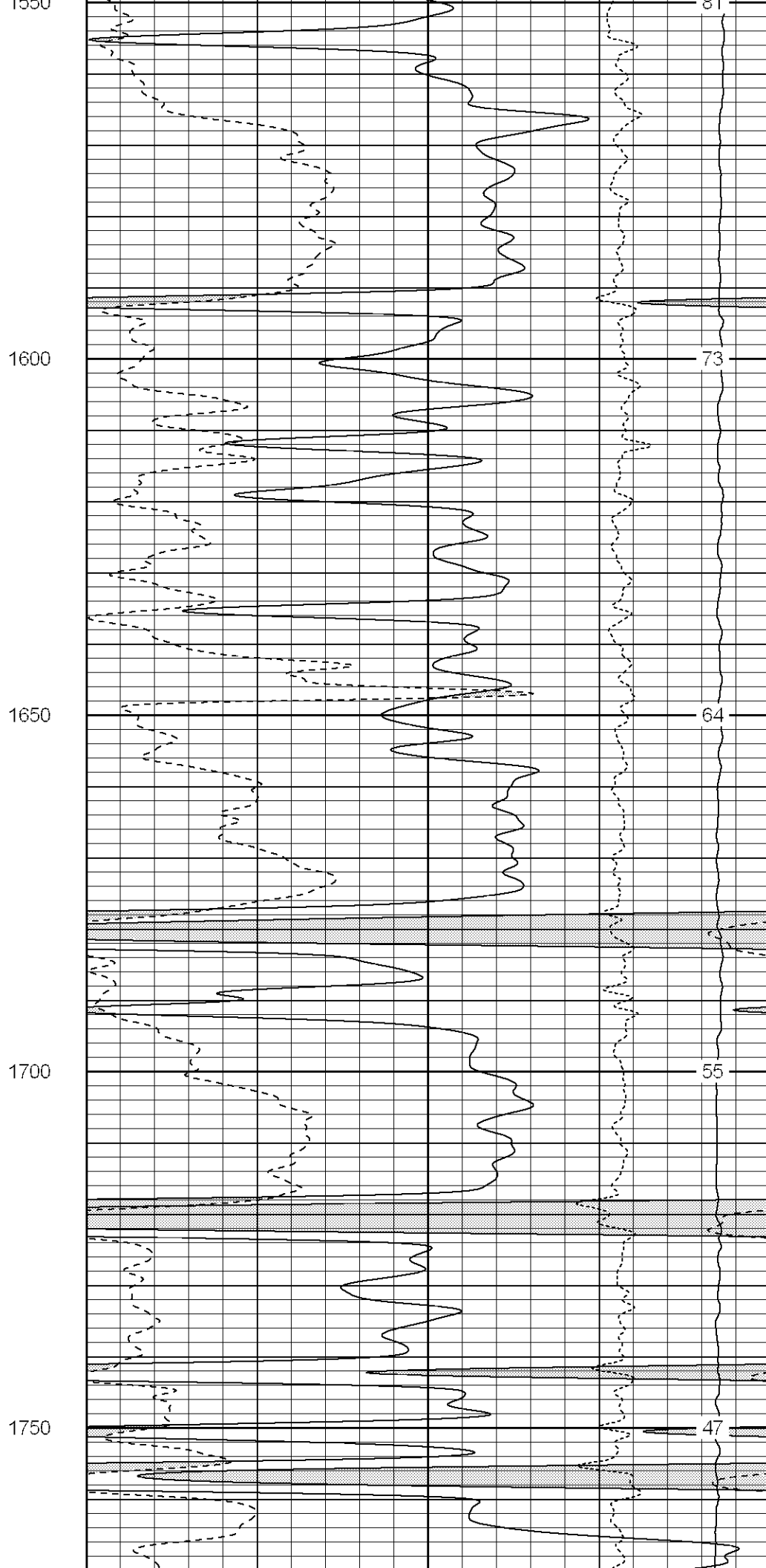
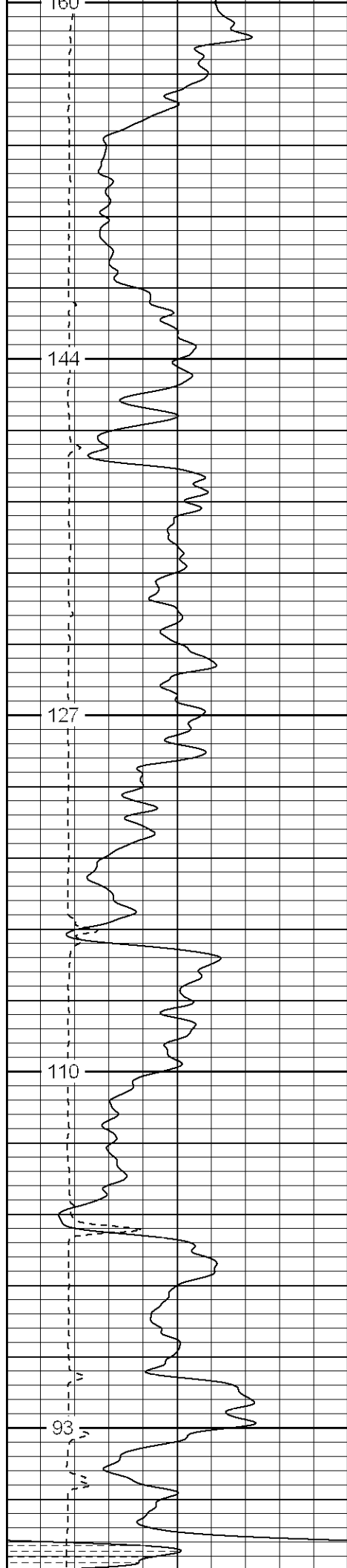
1200

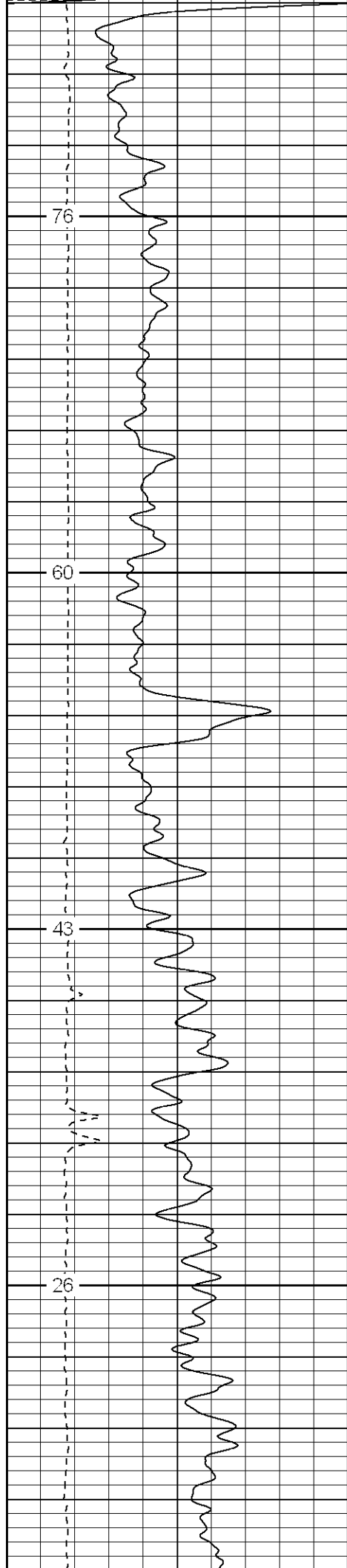
1250

1300







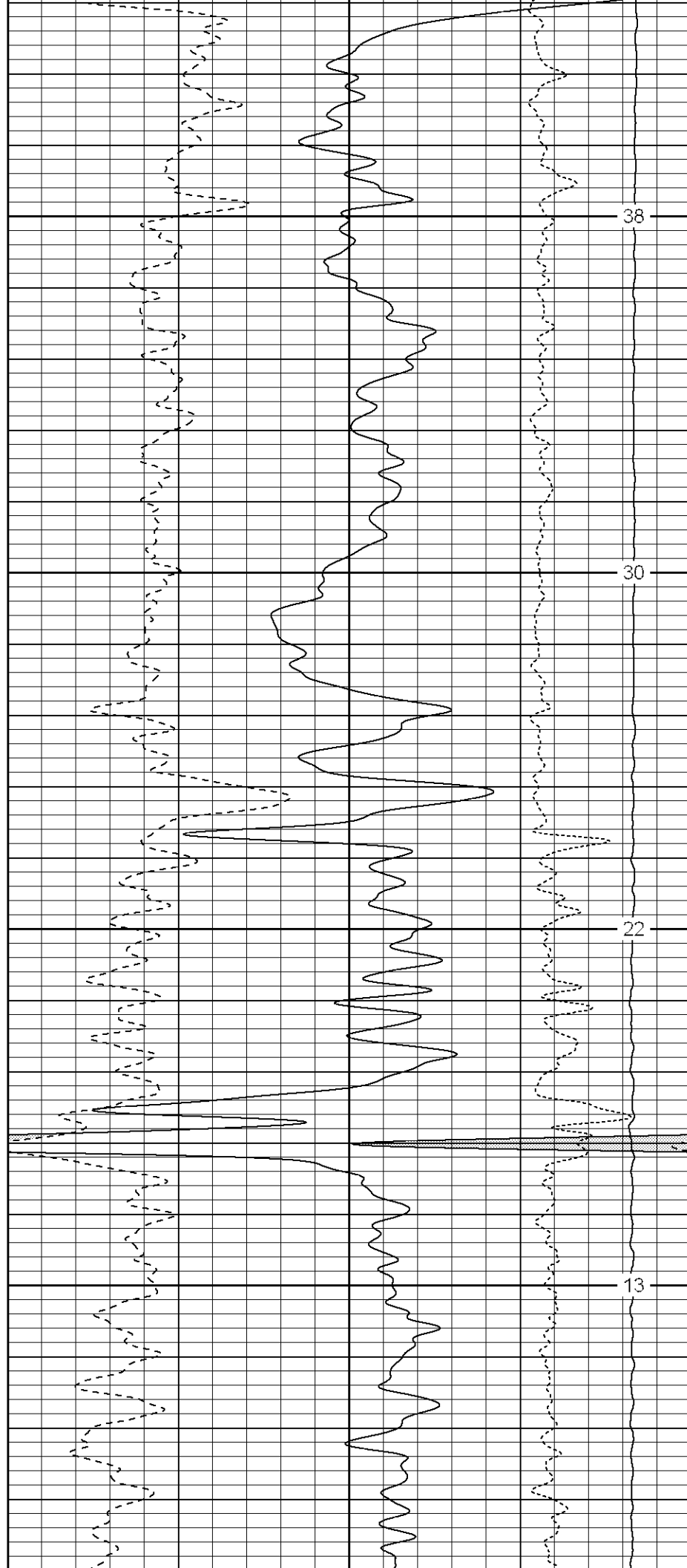


1800

1850

1900

1950

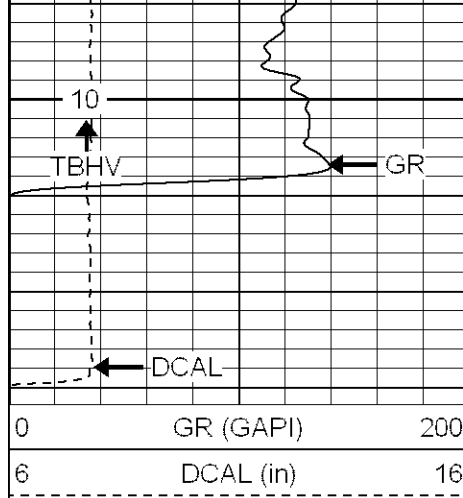


38

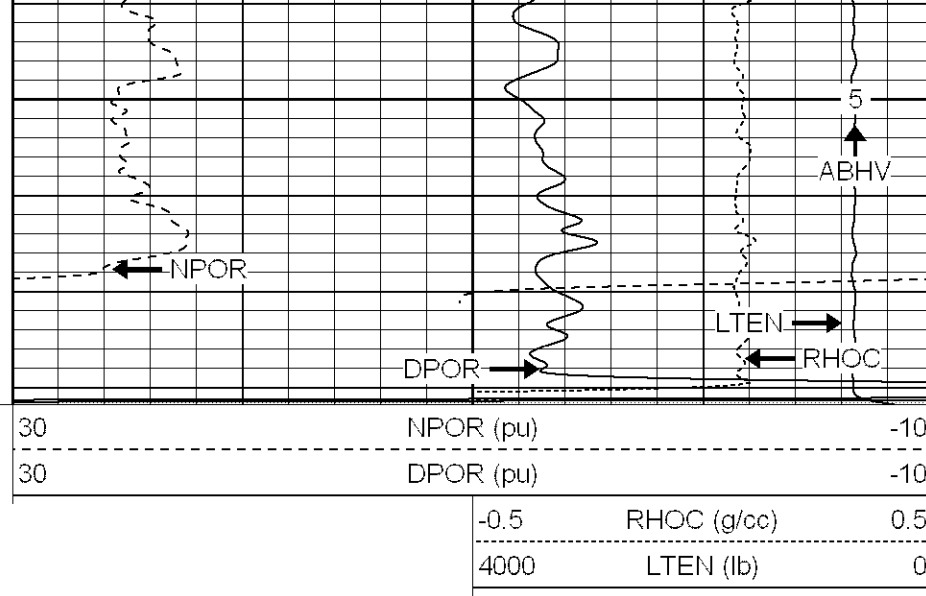
30

22

13



2000



SUPERIOR

Black Lick, Pa.
Mercer, Pa.
Wooster, Oh.
Cleveland, Ok.
Trinidad, Co.

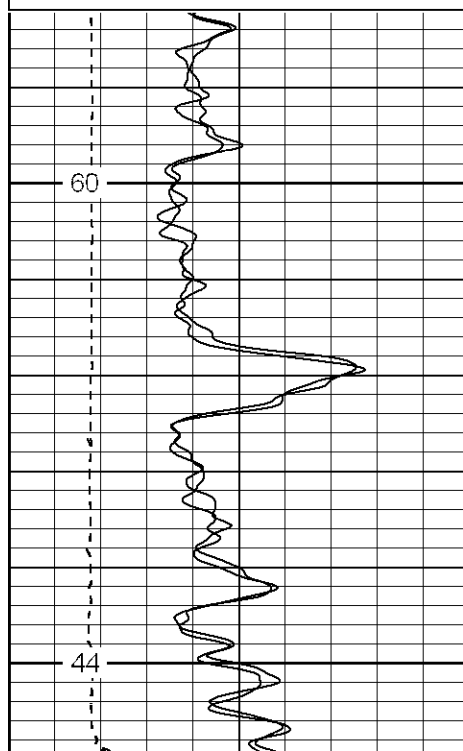
Repeat Section

Database File: xtoge3202.db
 Dataset Pathname: pass3.1
 Presentation Format: cdnl
 Dataset Creation: Mon Mar 19 22:41:14 2007 by Calc Open-Cased 061129
 Charted by: Depth in Feet scaled 1:240

0	GR (GAPI)	200
6	DCAL (in)	16
6	DCAL-repeat (in)	16
0	GR-repeat (GAPI)	200

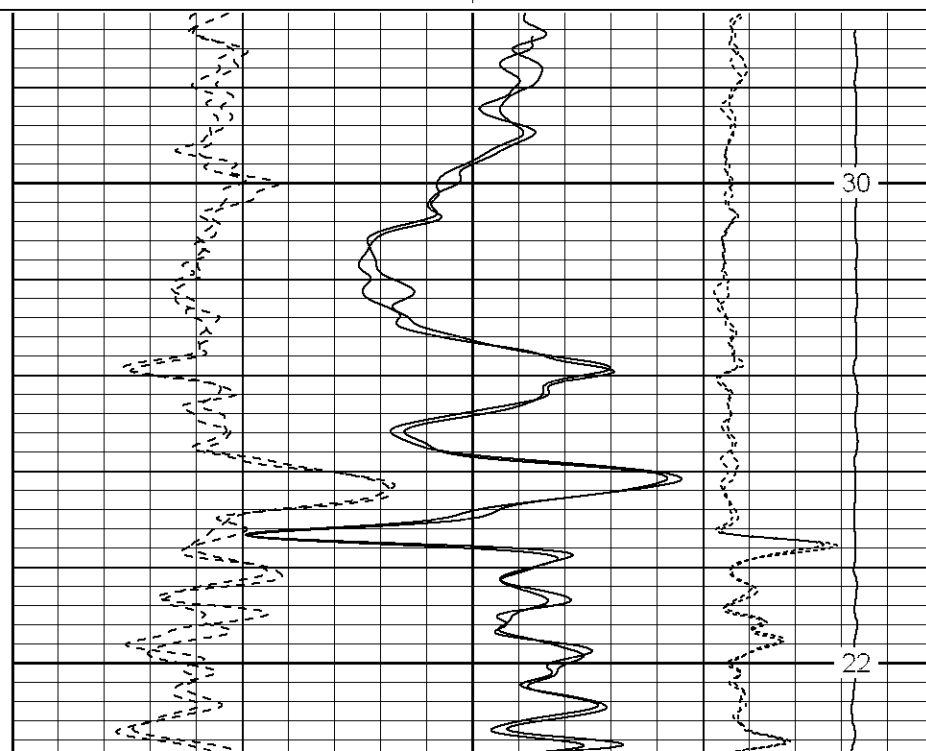
30	NPOR (pu)	-10
30	DPOR (pu)	-10
30	NPOR-repeat (pu)	-10
30	DPOR-repeat (pu)	-10

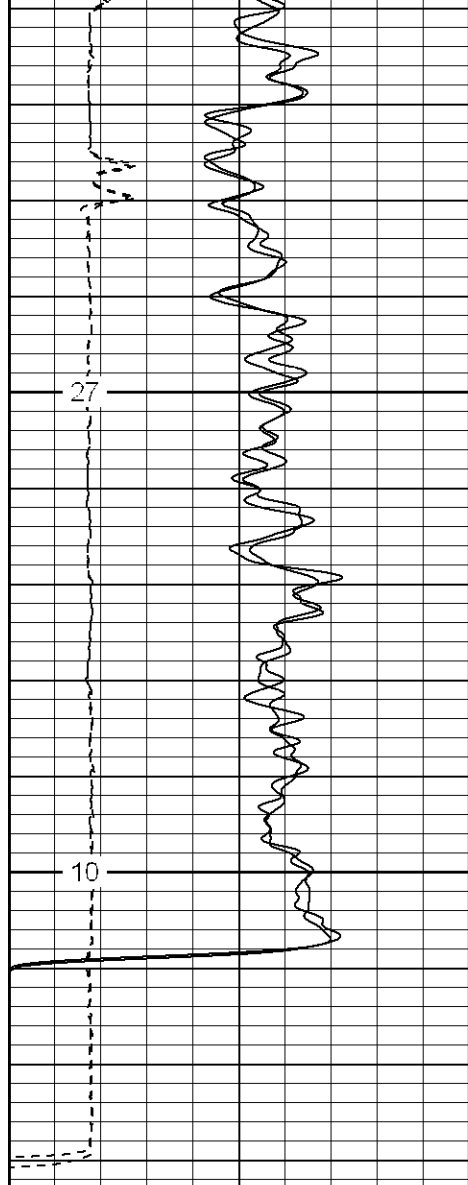
-0.5	RHOC (g/cc)	0.5
4000	LTEN (lb)	0
-0.5	RHOC-repeat (g/cc)	0.5



1850

1900

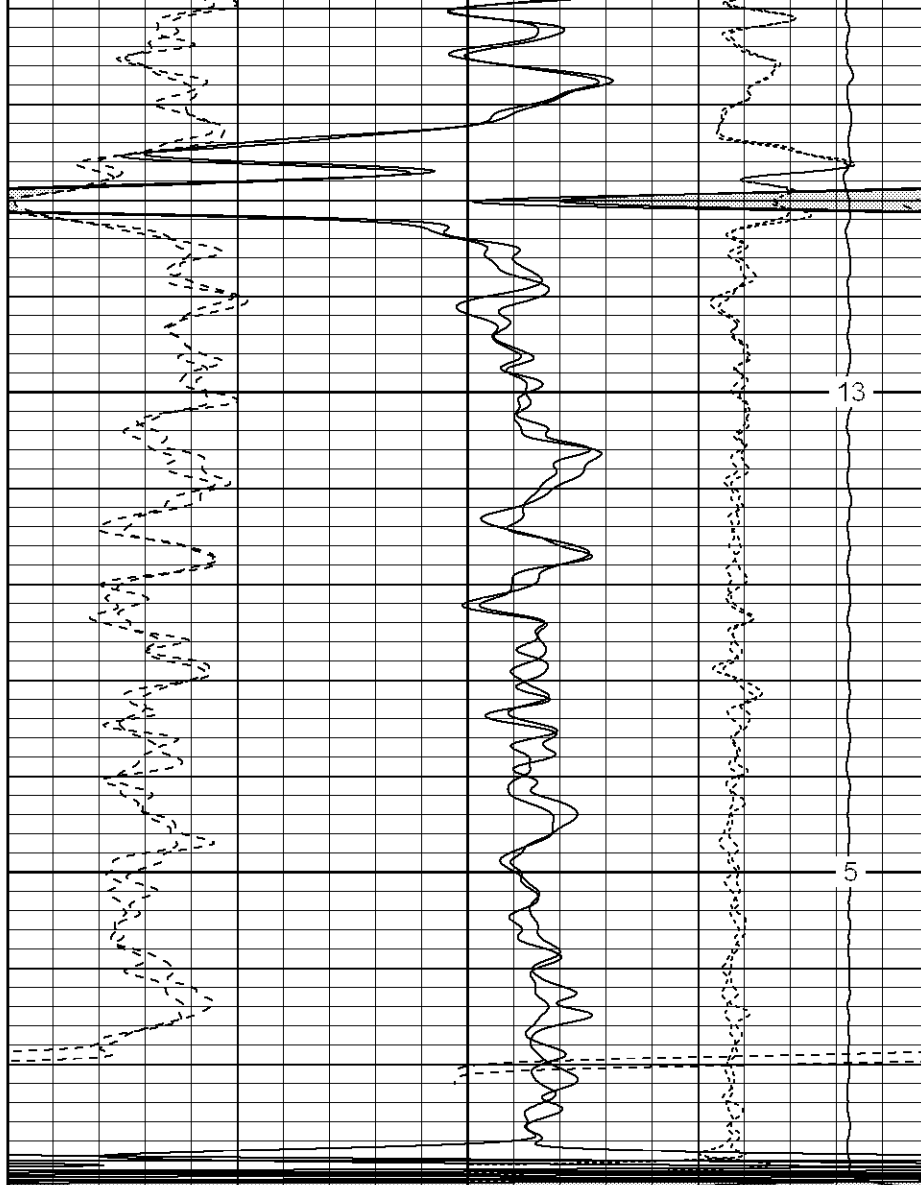




0	GR (GAPI)	200
6	DCAL (in)	16
6	DCAL-repeat (in)	16
0	GR-repeat (GAPI)	200

1950

2000



30	NPOR (pu)	-10
30	DPOR (pu)	-10
30	NPOR-repeat (pu)	-10
30	DPOR-repeat (pu)	-10

-0.5	RHOC (g/cc)	0.5
4000	LTEN (lb)	0
-0.5	RHOC-repeat (g/cc)	0.5



SUPERIOR

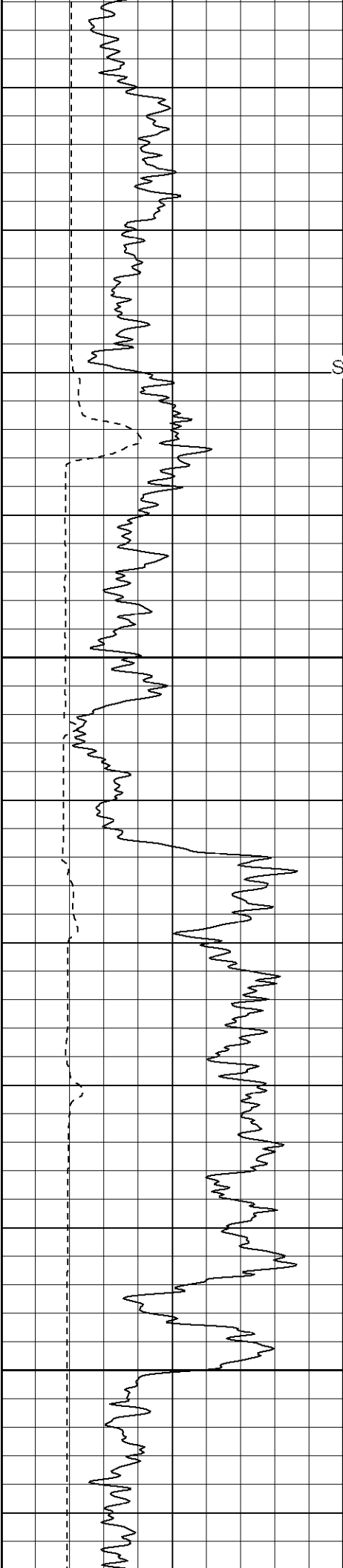
Black Lick, Pa.
Mercer, Pa.
Wooster, Oh.
Cleveland, Ok.
Trinidad, Co.

High Resolution Pass

Database File: xtoge3202.db
Dataset Pathname: pass4.2
Presentation Format: cdlhr
Dataset Creation: Tue Mar 20 10:51:33 2007 by Calc Open-Cased 061129
Charted by: Depth in Feet scaled 1:120

0	GR (GAPI)	200
6	DCAL (in)	16

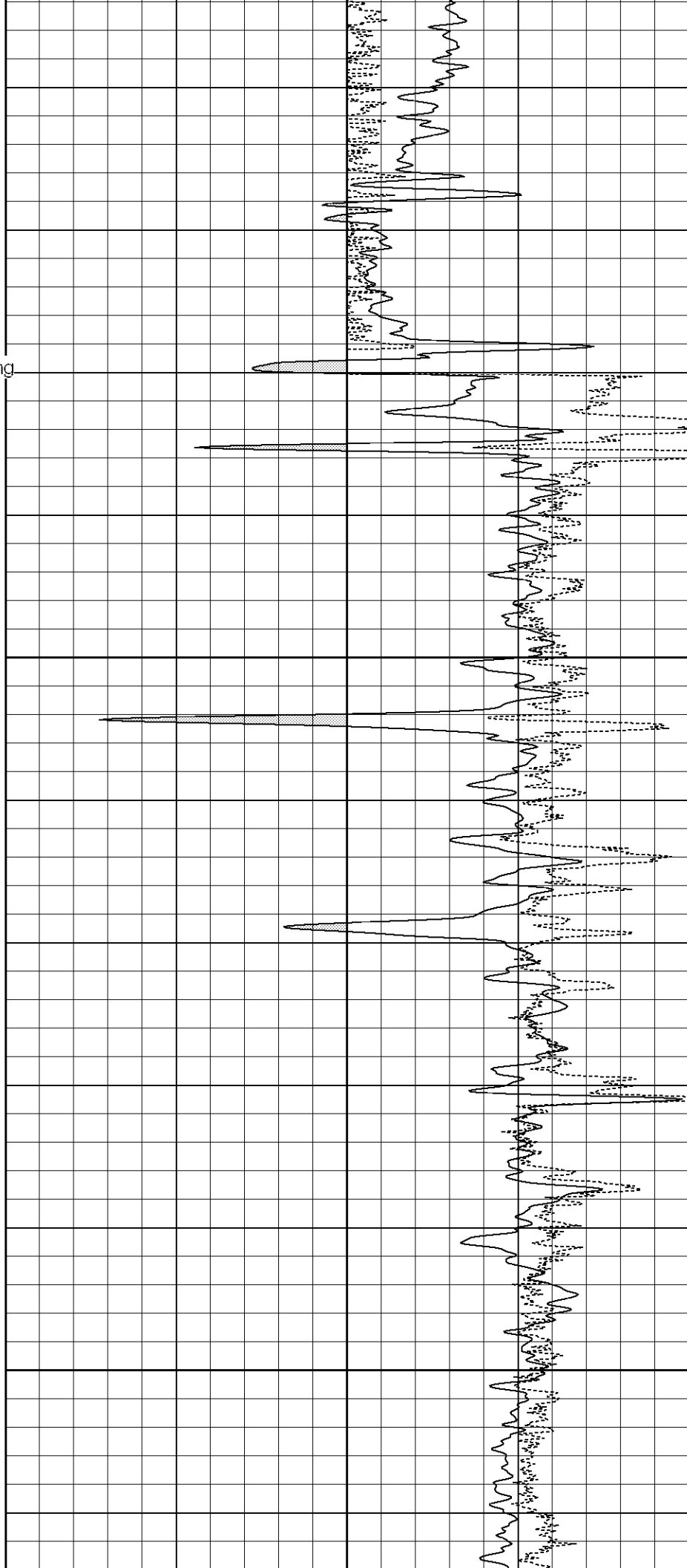
1	RHOB (g/cc)	3
-0.5	RHOC (g/cc)	0.5

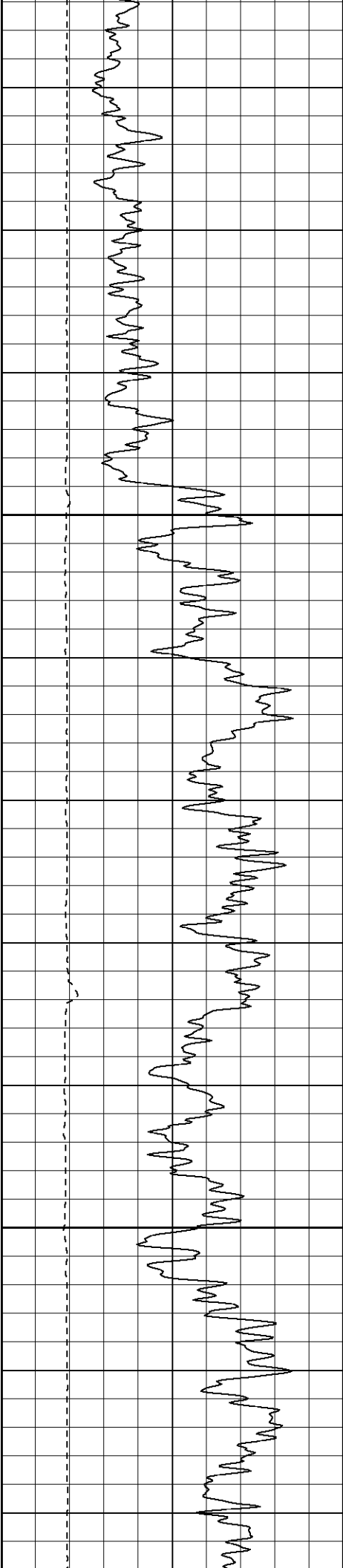


Surface Casing

800

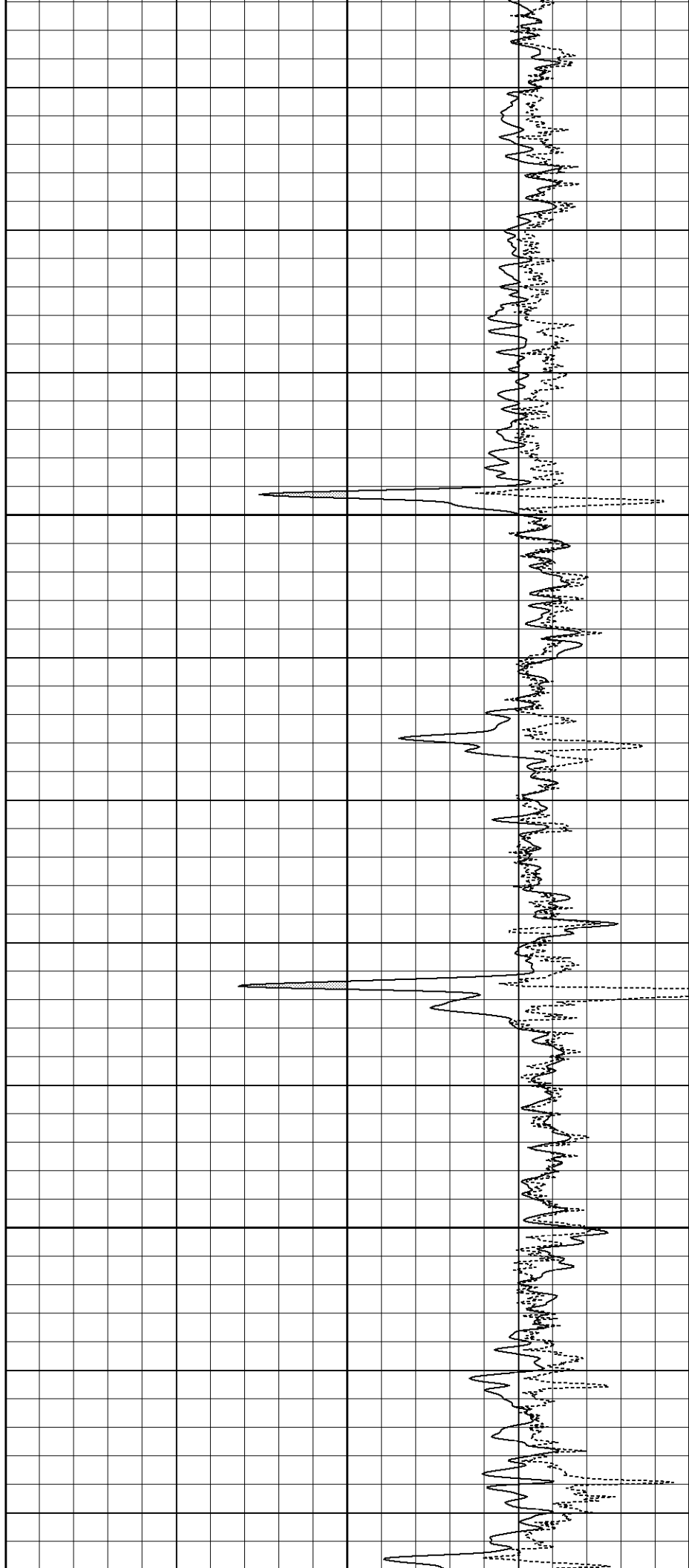
850

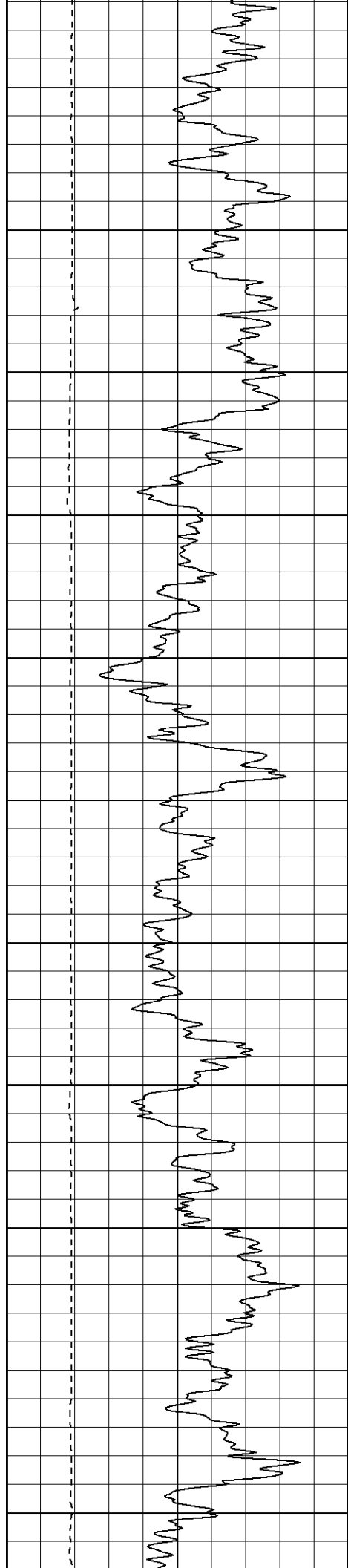




900

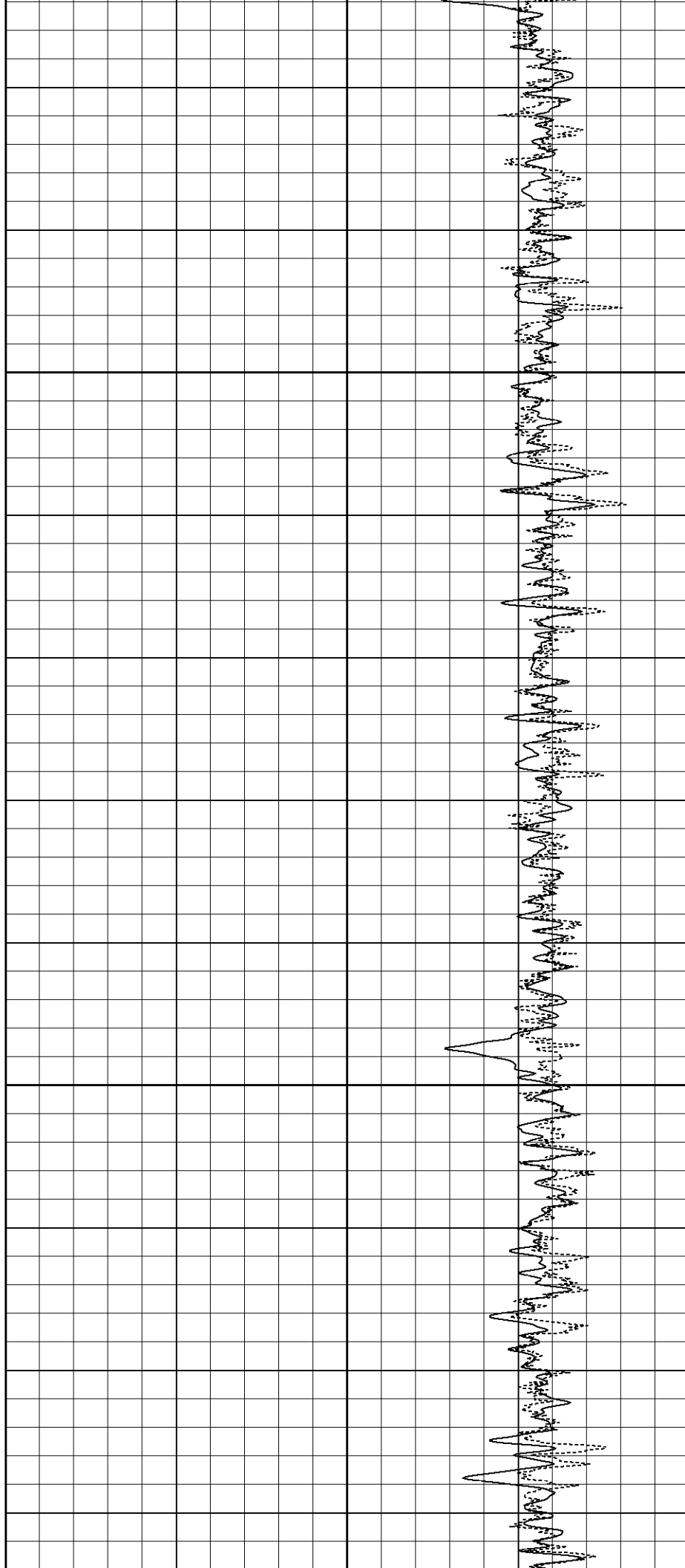
950





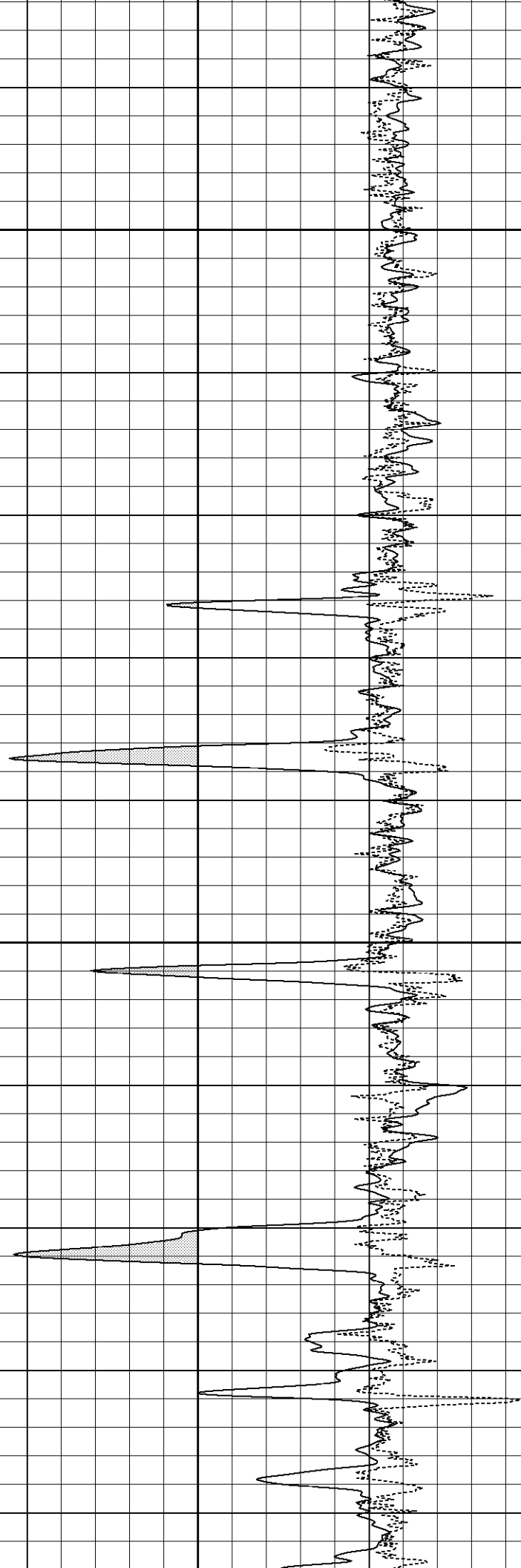
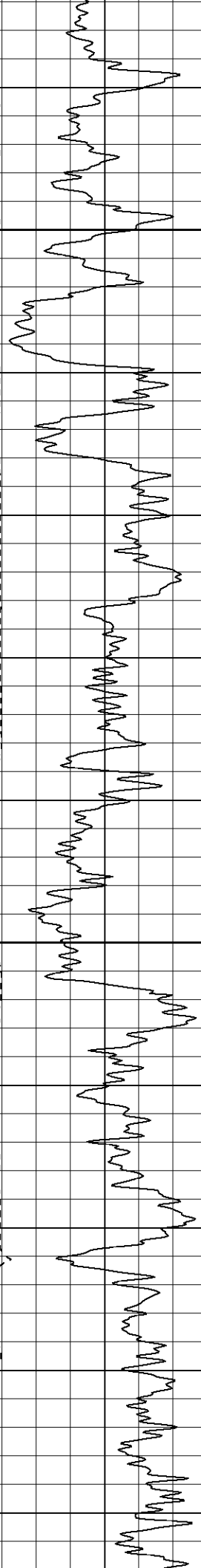
1000

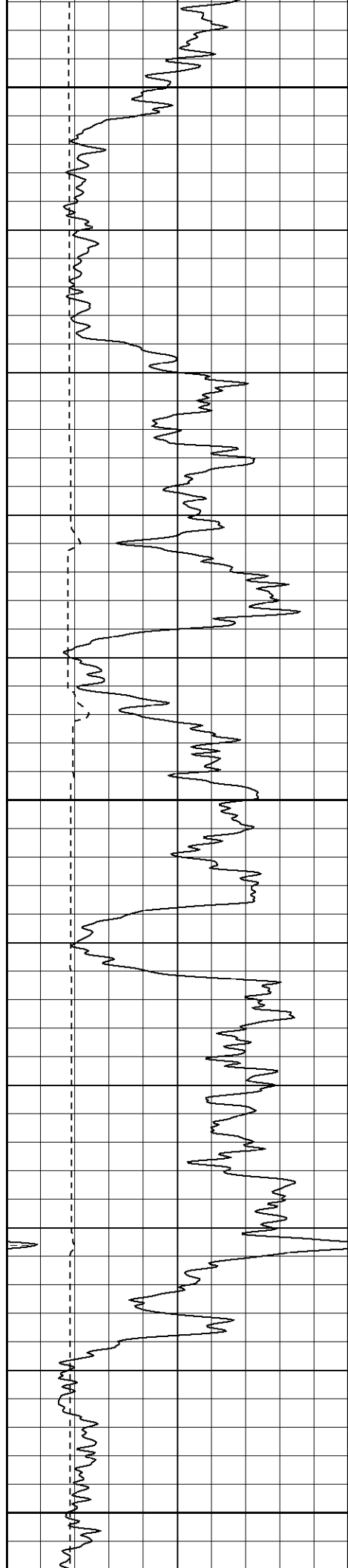
1050



1100

1150

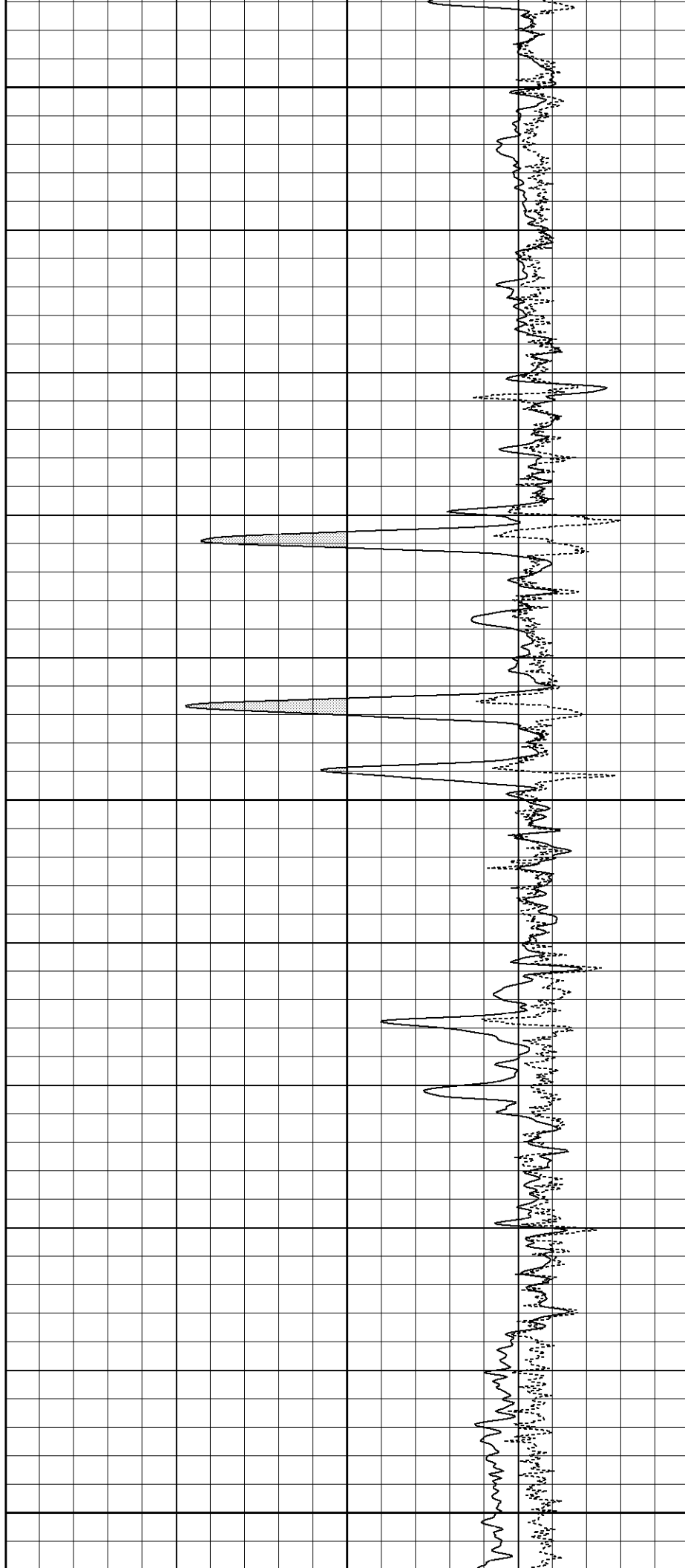


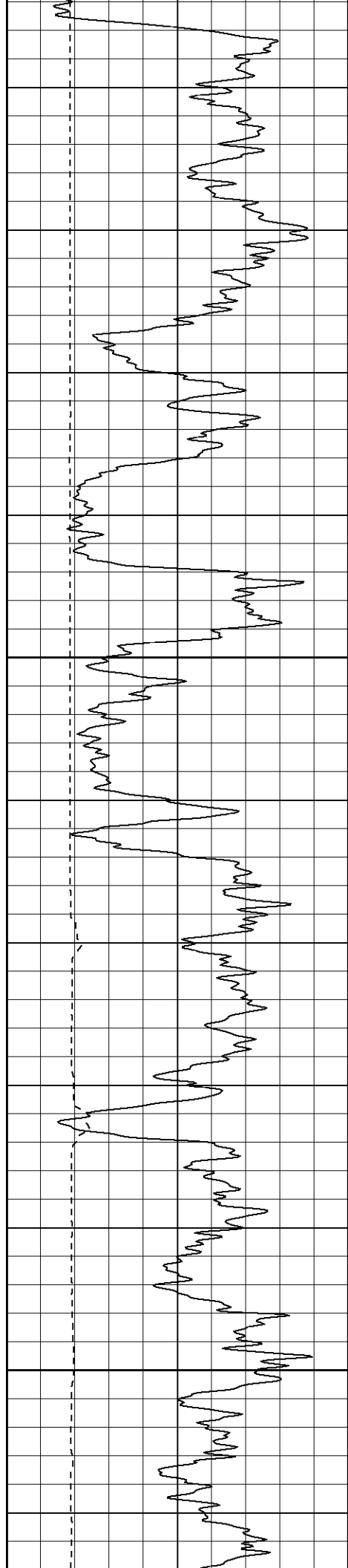


1200

1250

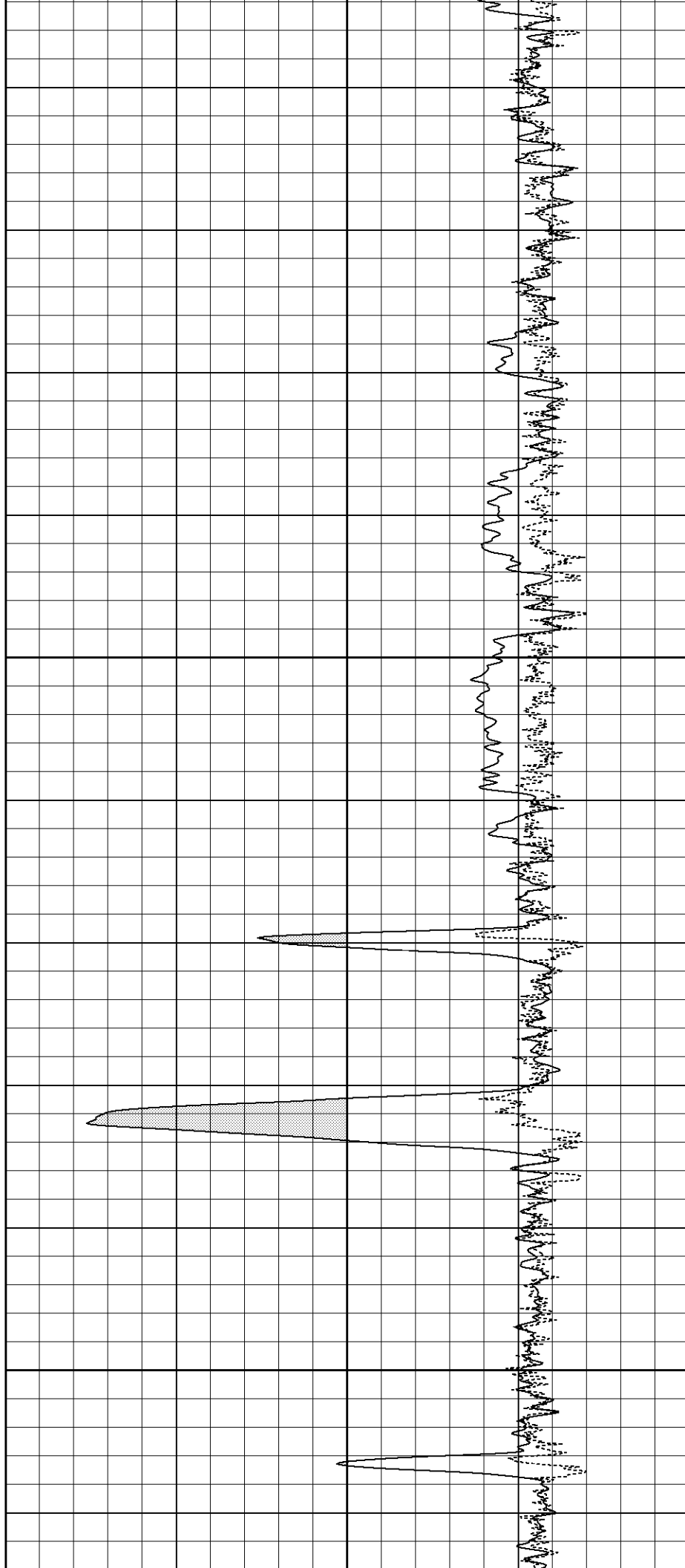
1300

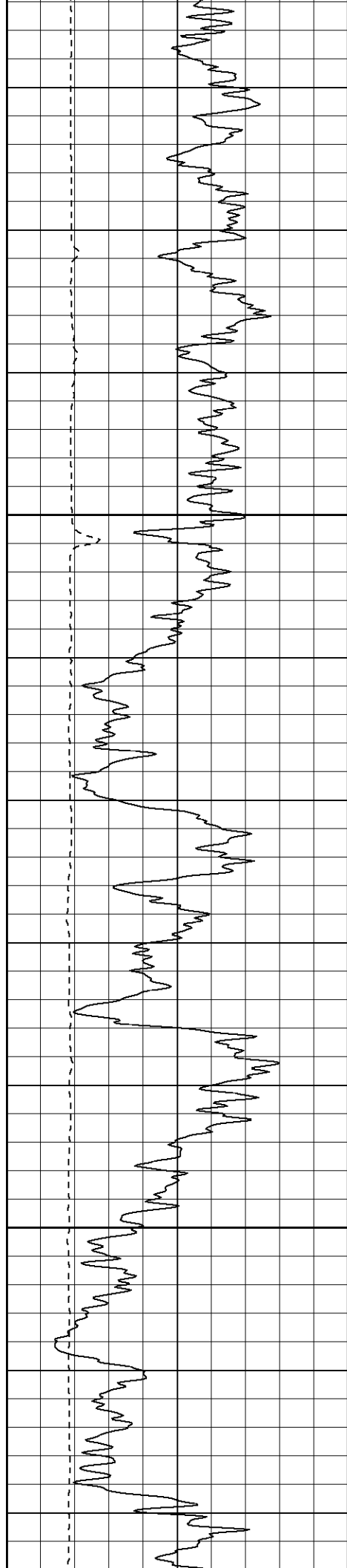




1350

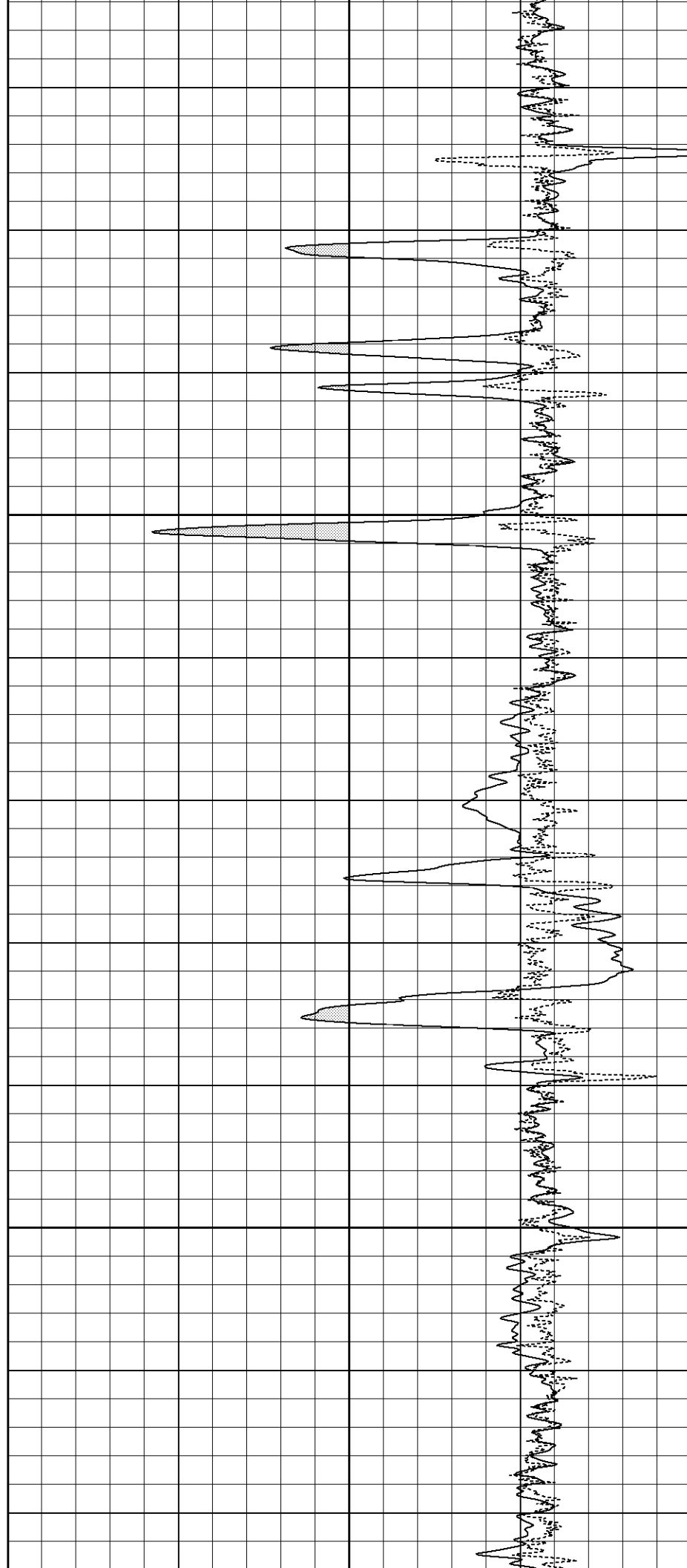
1400





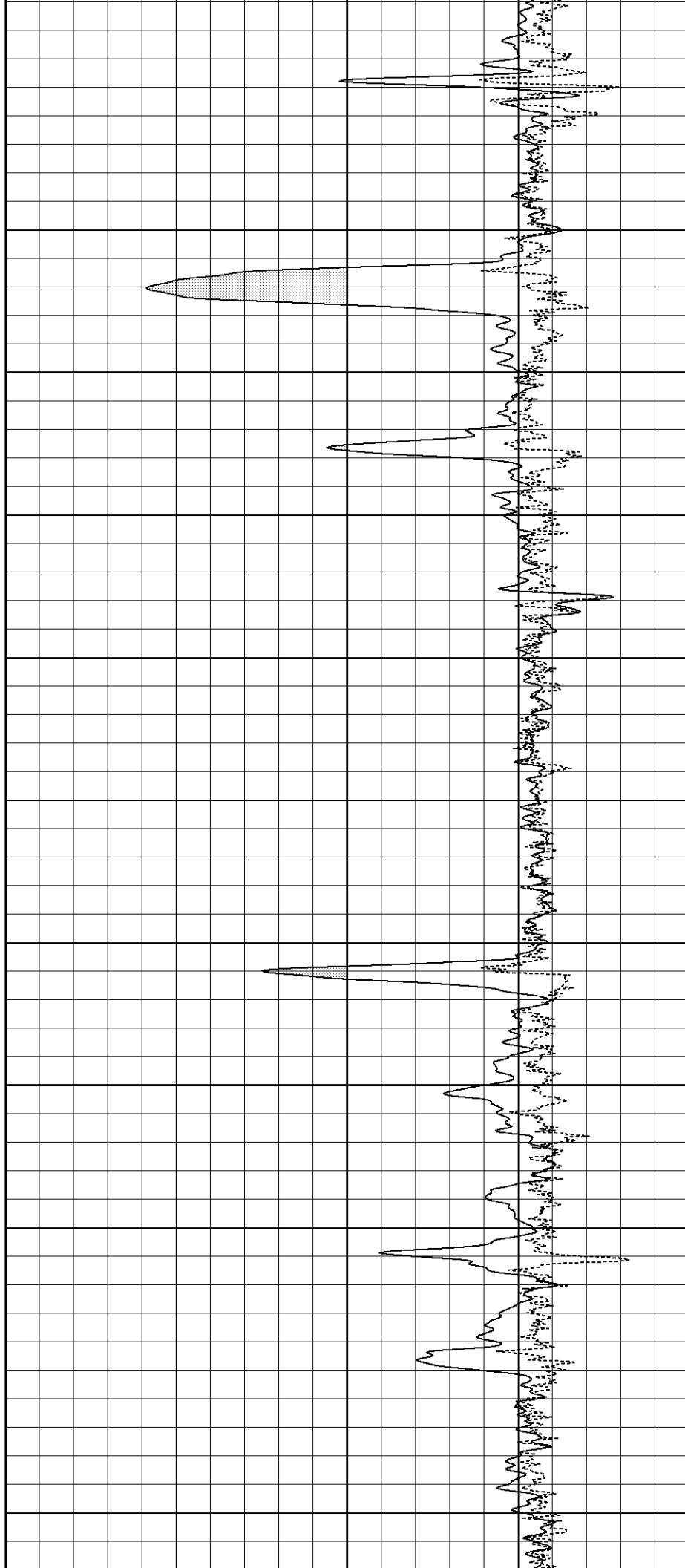
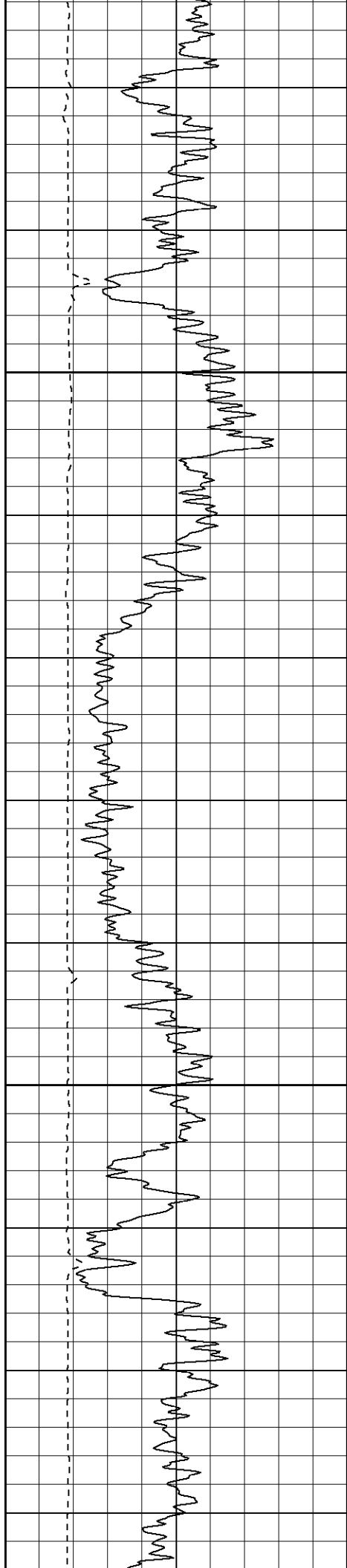
1450

1500



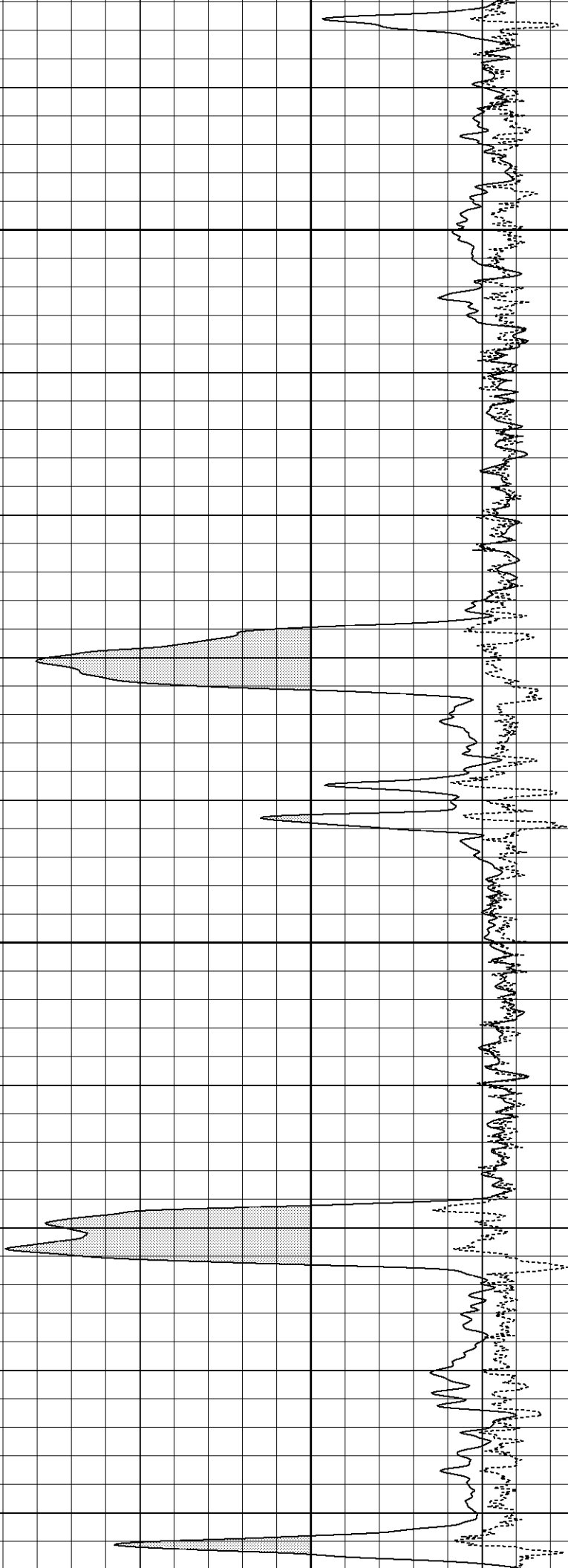
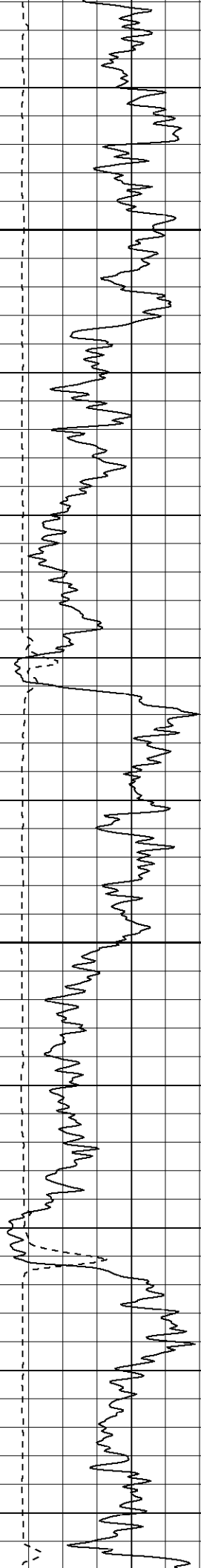
1550

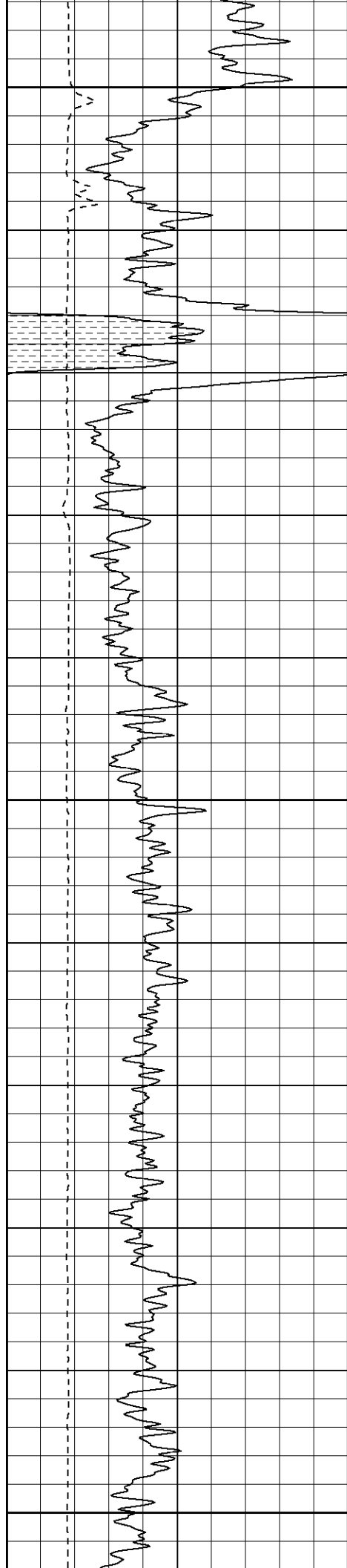
1600



1650

1700

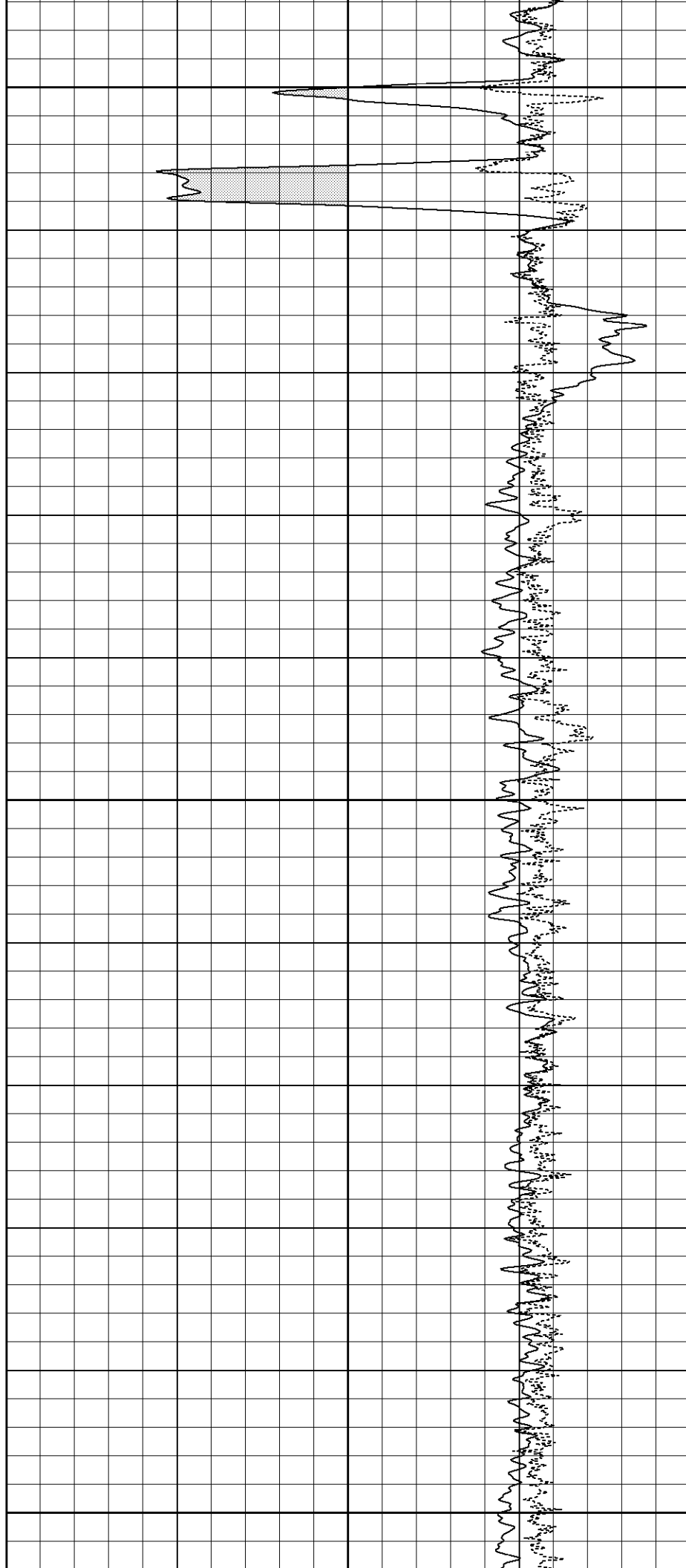


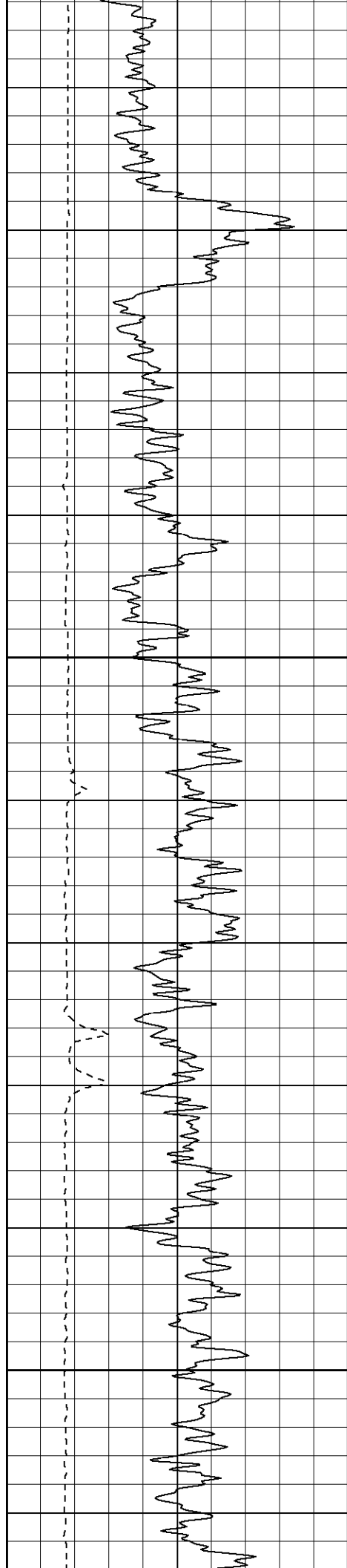


1750

1800

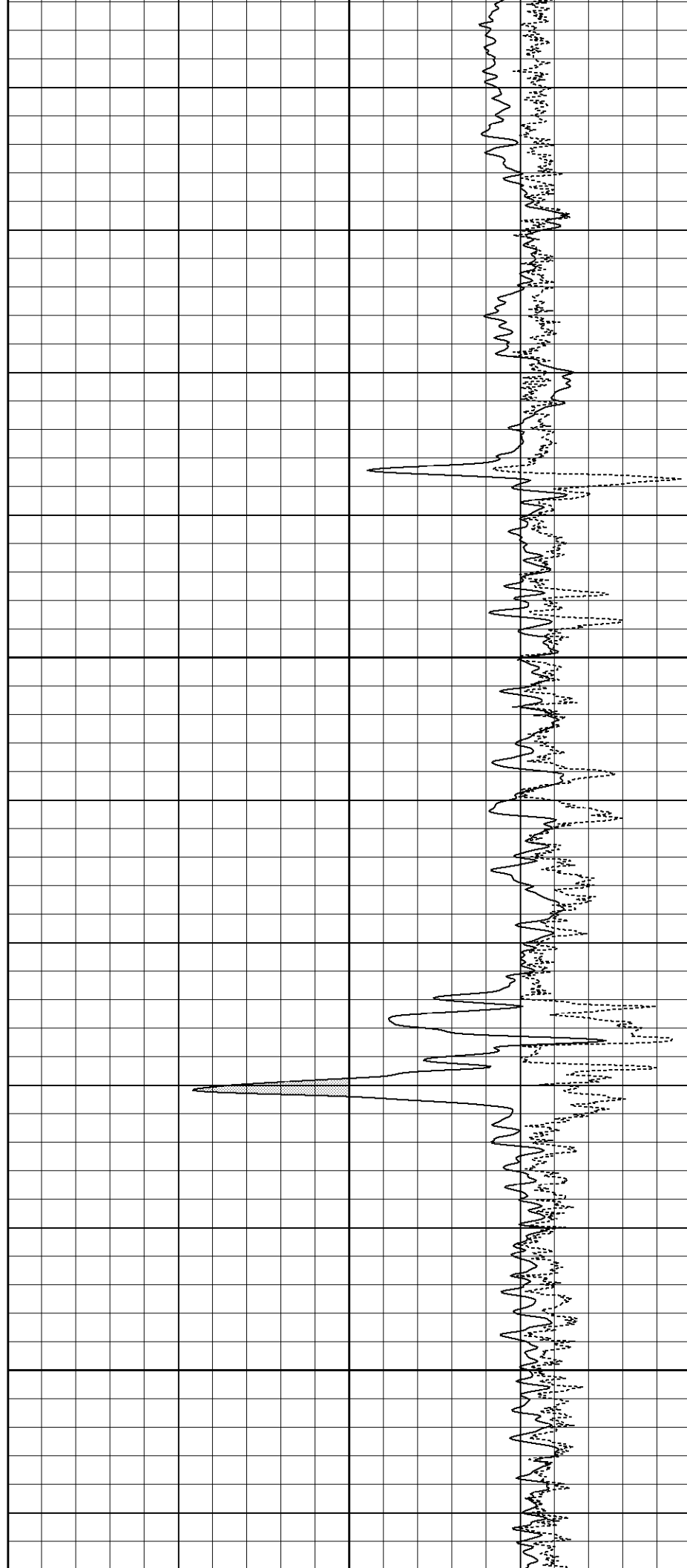
1850

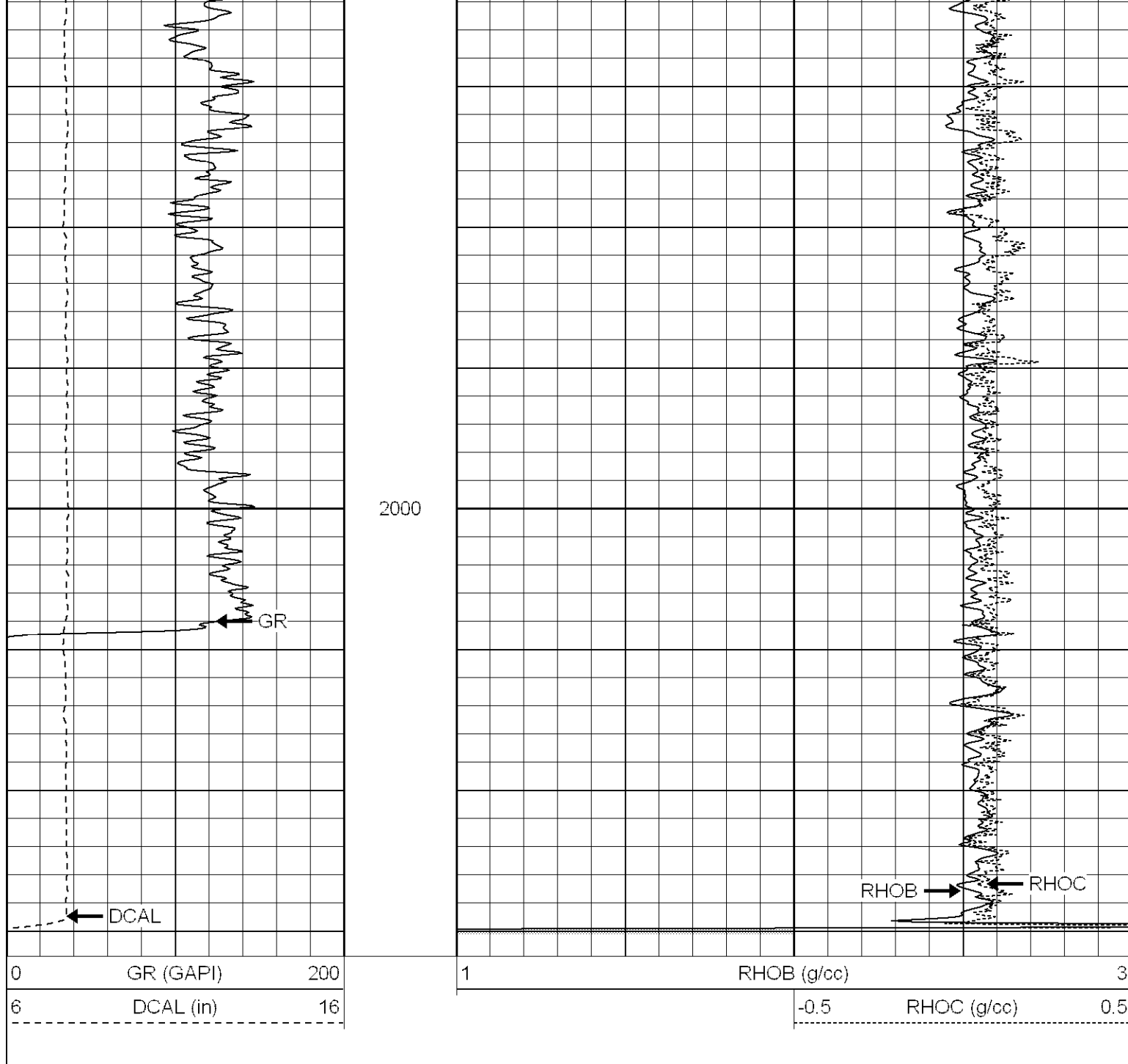




1900

1950





Calibration Report

Database File: xtoge3202.db
 Dataset Pathname: pass4
 Dataset Creation: Mon Mar 19 21:30:37 2007 by Log Open-Cased 061129

Compensated Density Calibration Report

Serial-Model: 2119-O
 Source / Verifier: csv-j12 / blks
 Master Calibration Performed: Thu Mar 08 14:06:07 2007


Master Calibration

	Density		Far Detector	Near Detector	
Magnesium	1.710	g/cc	988.49	602.41	cps
Aluminum	2.590	g/cc	220.69	404.88	cps

Spine Angle = 75.16

Density/Spine Ratio = 0.567

Serial Number:	5145	
Tool Model:	G	
Performed:	Thu Jan 25 22:38:45 2007	
Calibrator Value:	1200	NAPI
Calibrator Reading:	1700	cps
Sensitivity:	1	NAPI/cps

Sensor	Offset (ft)	Schematic	Description	Len (ft)	OD (in)	Wt (lb)
NEU	12.44		None	0.75	1.50	5.00
			NEU-G (5145) Gearhart Epithermal	5.75	3.50	85.00
GR	7.64		GR-O (2119) Oilex	2.60	3.63	74.00
LSD	2.13		CDL-O (2119) Oilex	5.77	4.00	201.00
DCAL	1.79					
SSD	1.58					
Dataset: xtoge3202.db: field/well/run1/pass4 Total Length: 14.87 ft Total Weight: 365.00 lb O.D. 4.00 in						