

Patterson

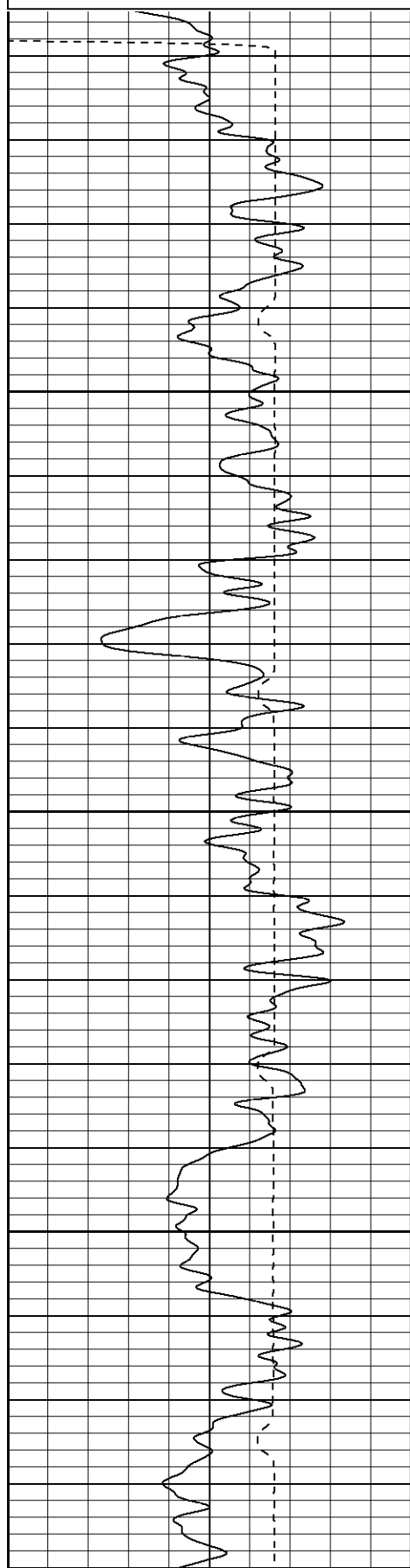
Company		XTO Energy Inc.		
Well		Apache Canyon 05-04		
Field		Purgatoire River		
County		Las Animas		
State		Colorado		
Location:		965' F		
SEC		5		
TV		TV		
Permanent Datum		Gr		
Log Measured From		Gr		
Drilling Measured From		Gr		
Date		07-18-06		
Run Number		One		
Depth Driller		2420'		
Depth Logger		1596'		
Bottom Logged Interval		1591'		
Top Log Interval		Surface		
Open Hole Size		7 7/8"		
Type Fluid		Water		
Density / Viscosity		///		
Max. Recorded Temp.		///		
Estimated Cement Top		1130'		
Time Well Ready		9:00 a.m		
Time Logger on Bottom		9:10 a.m		
Equipment Number		T677		
Location		Trinidad		
Recorded By		L. Smith		
Witnessed By		Mr. Mike Po		
Borehole Record				
Run Number		Bit	From	To
Casing Record		Size		VA
Surface String		8 5/8"		
Prot. String				
Production String				
Liner				

Database File: xtoac0504071806b.db
Dataset Pathname: pass2
Presentation Format: cblrt
Dataset Creation: Tue Jul 18 09:21:48 2006 by Log Warrior 7.0 STD Ope
Charted by: Depth in Feet scaled 1:240

0	GR (GAPI)	200
400	TT3 (usec)	200

0	AMP3 (mV)	100
18	CCL	-2
100	CBL5	1200

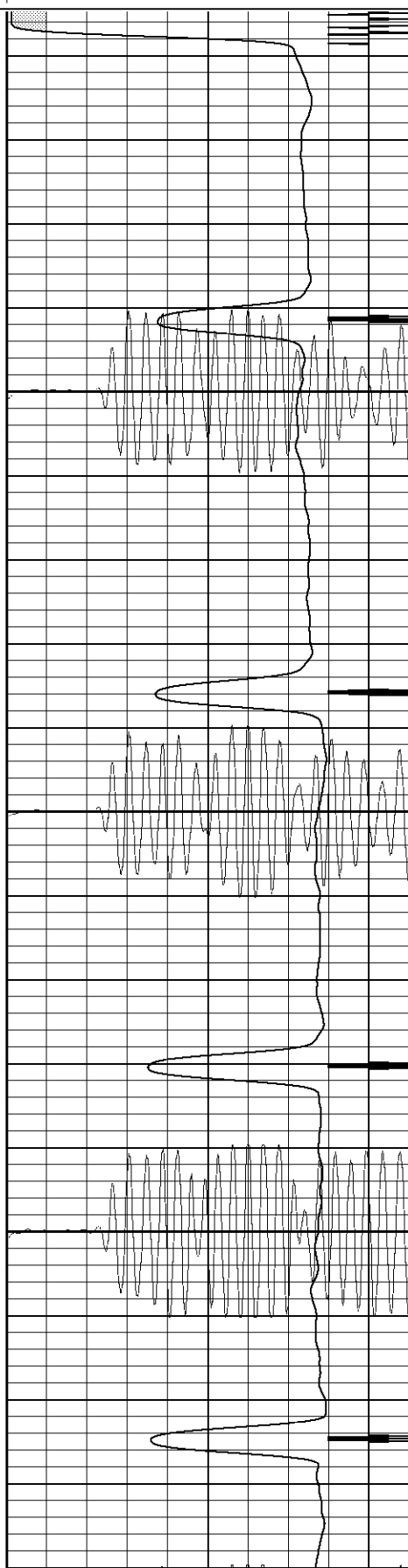
200	Variable Density	1200
-----	------------------	------



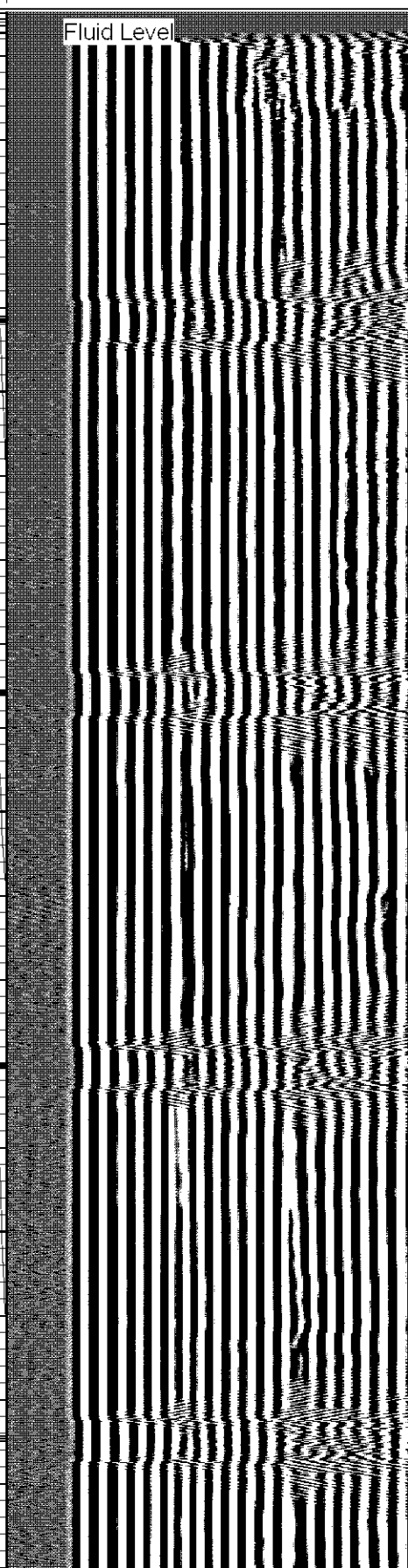
50

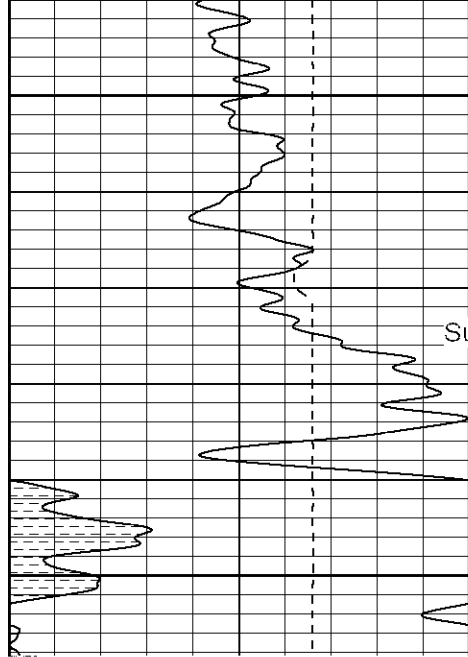
100

150



Fluid Level

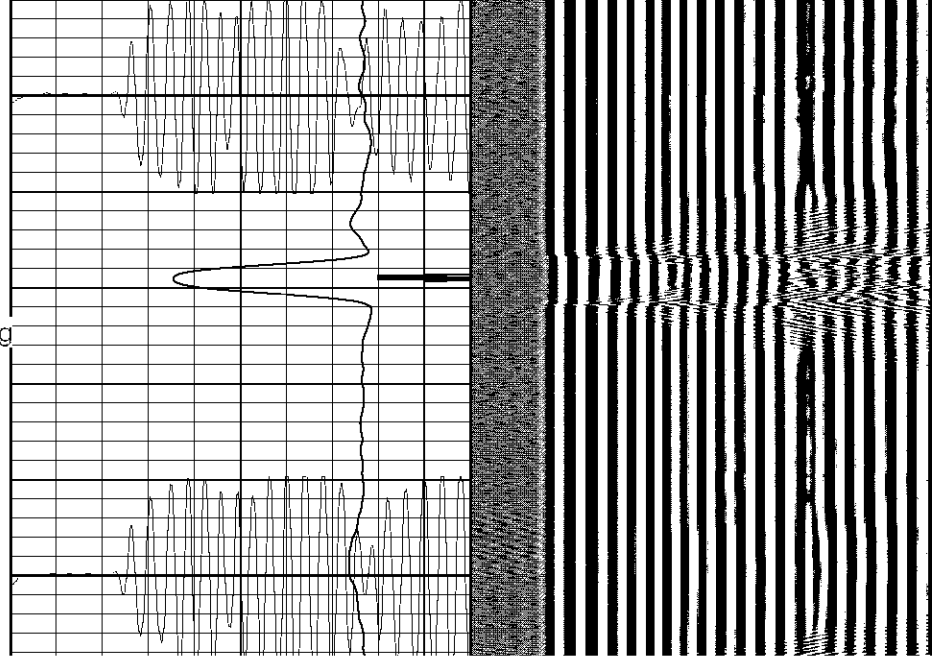


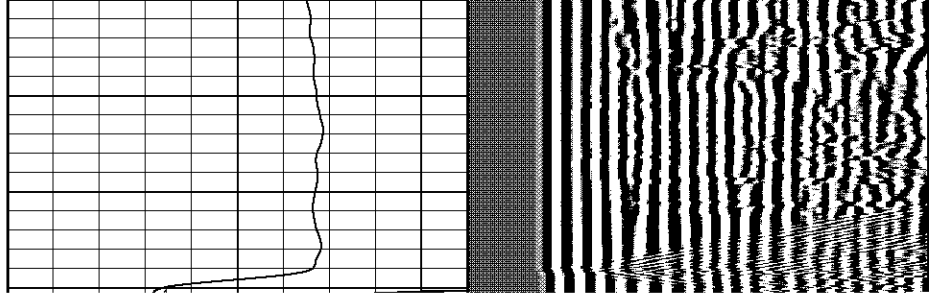
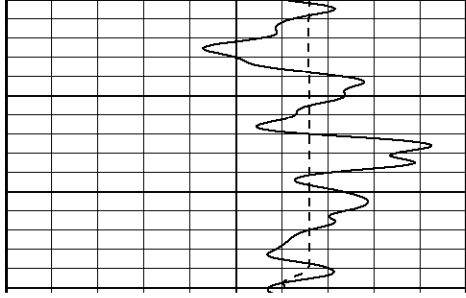


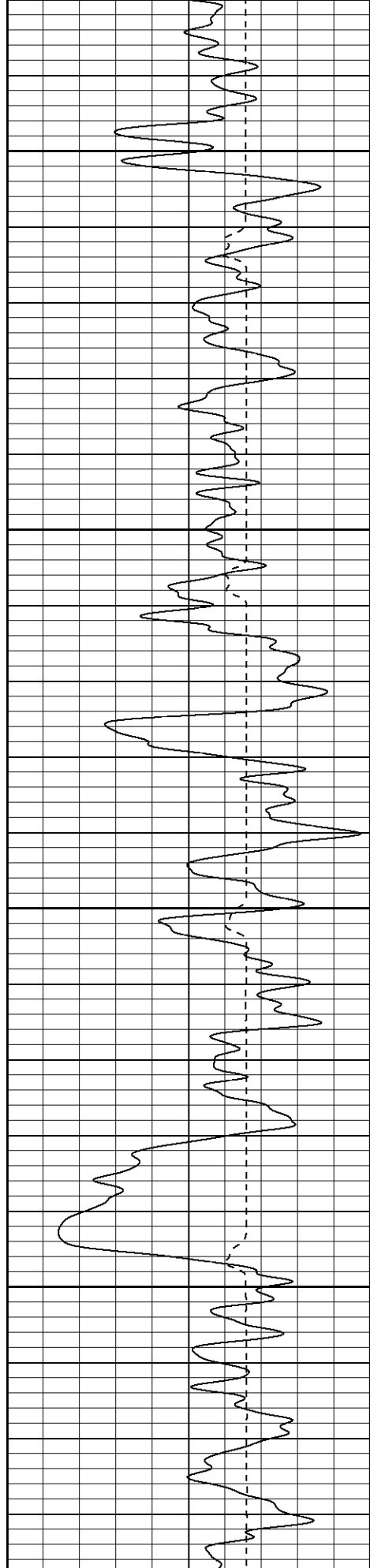
200

Surface Casing

250





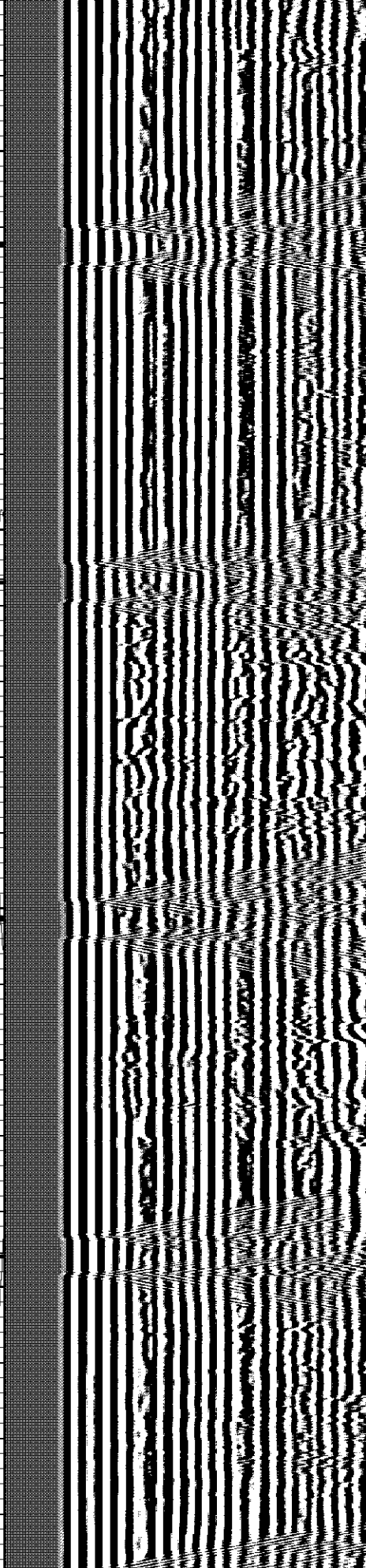
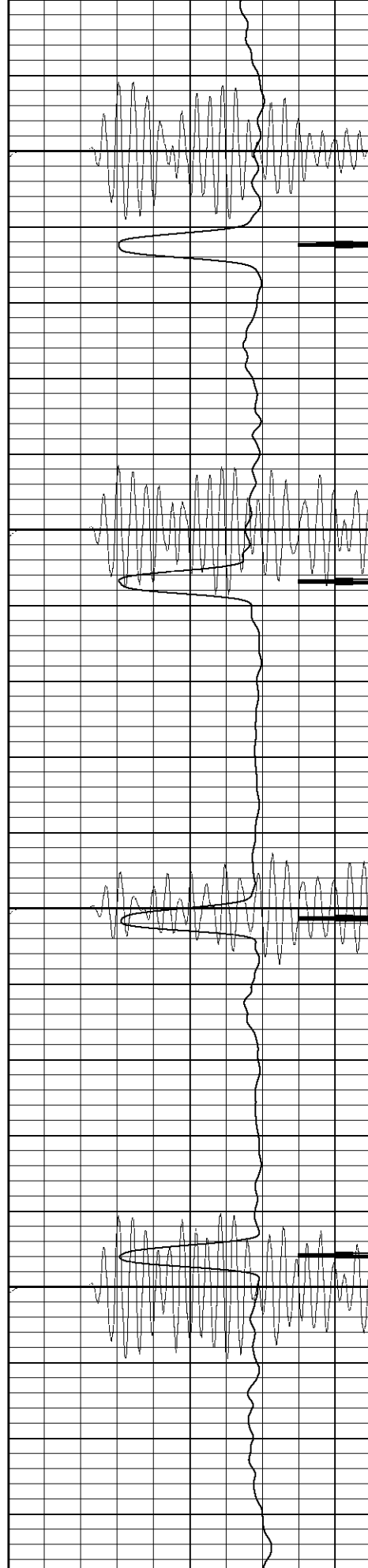


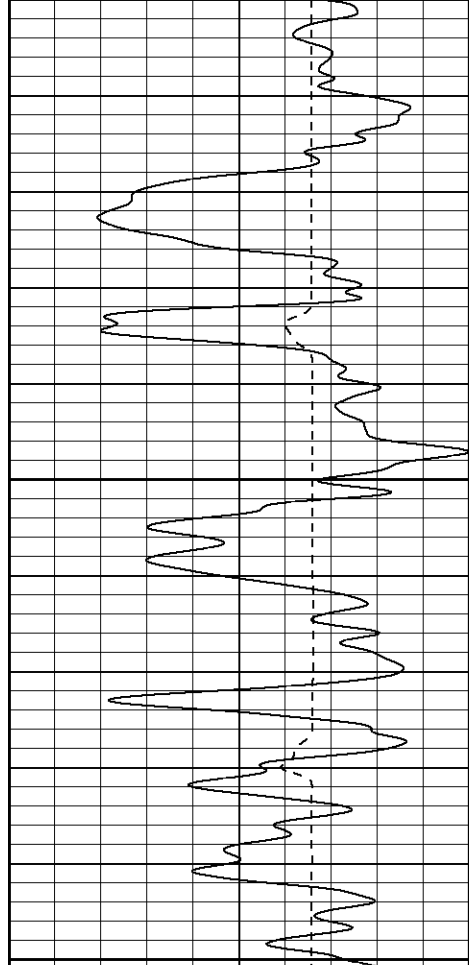
650

700

750

800

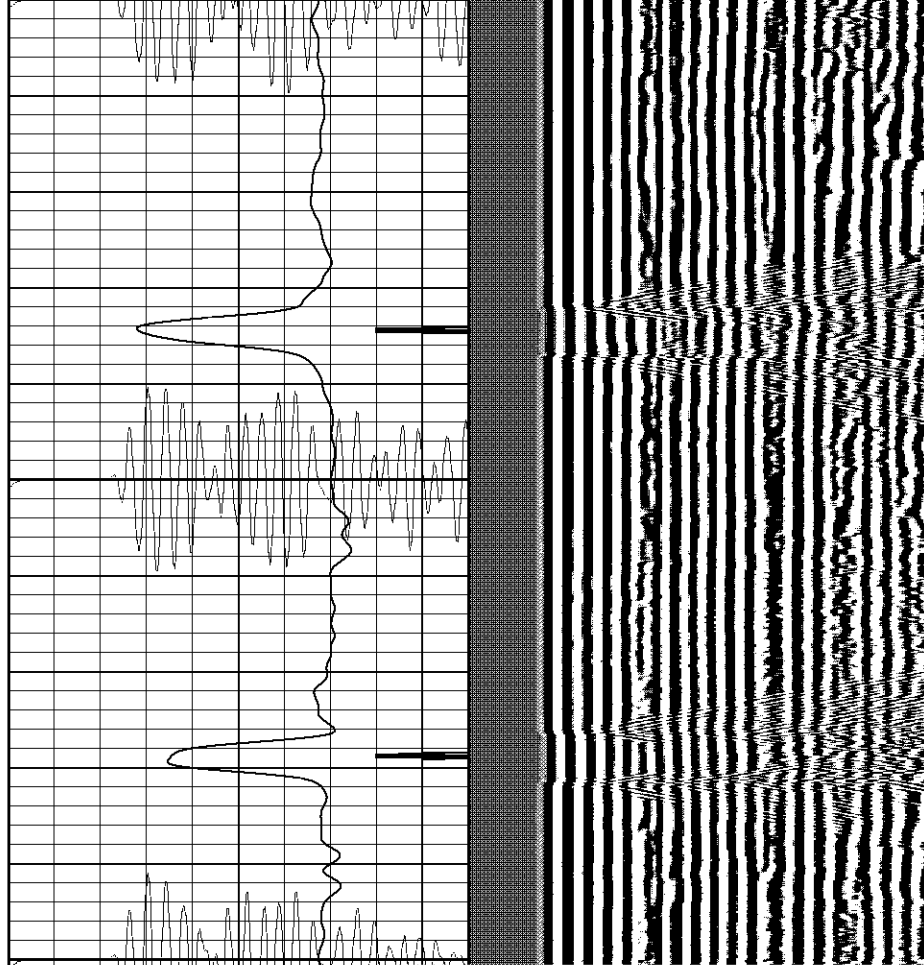


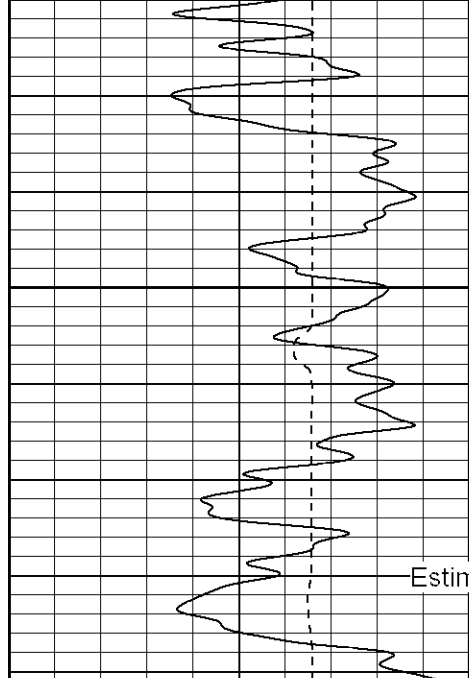


850

900

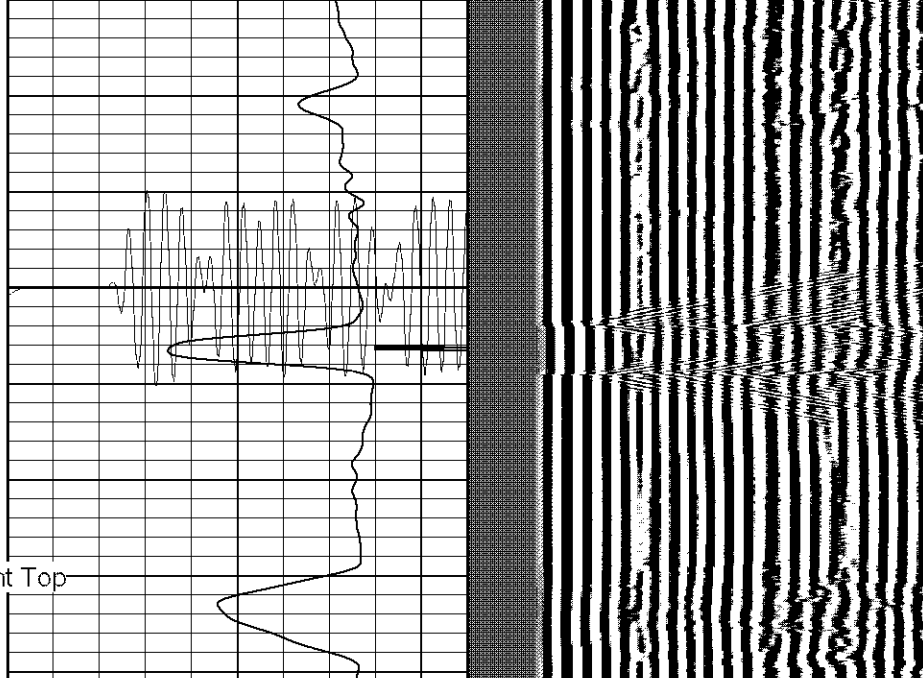
950

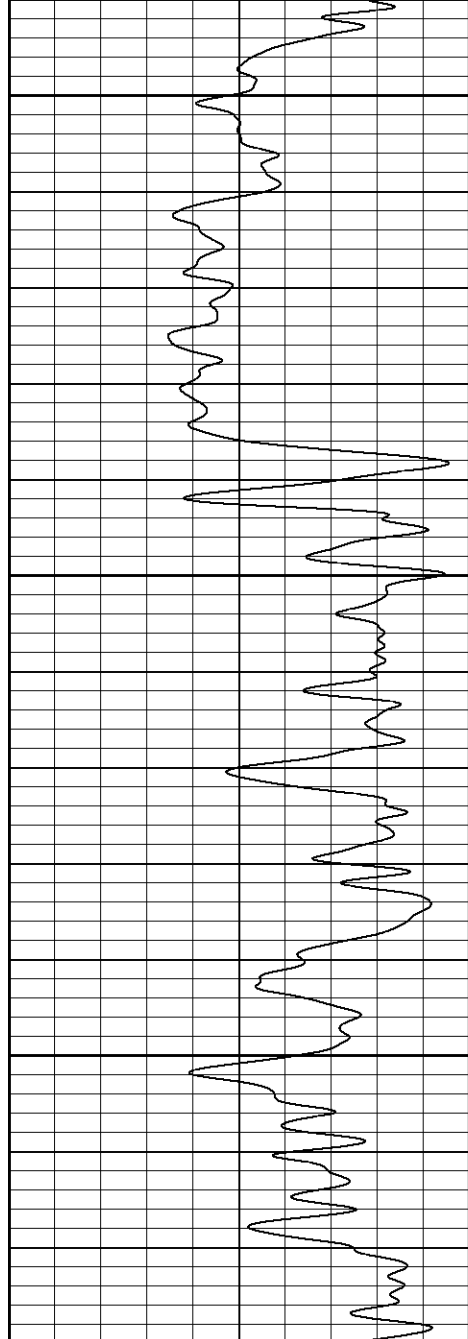




1100

Estimated Cement Top

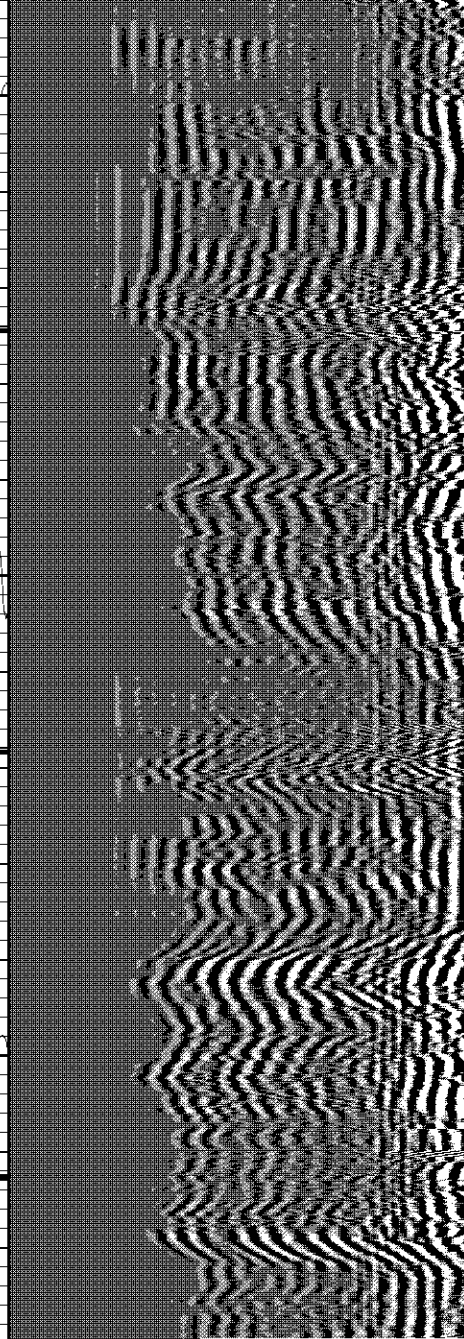
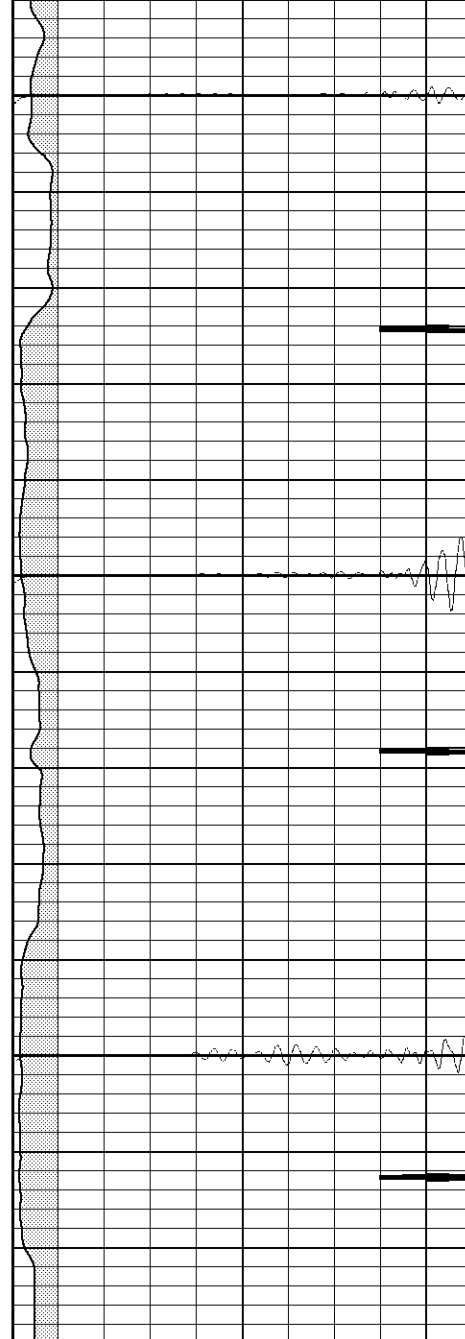


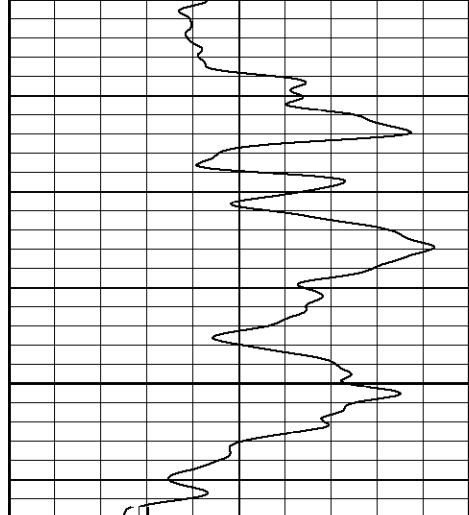


1300

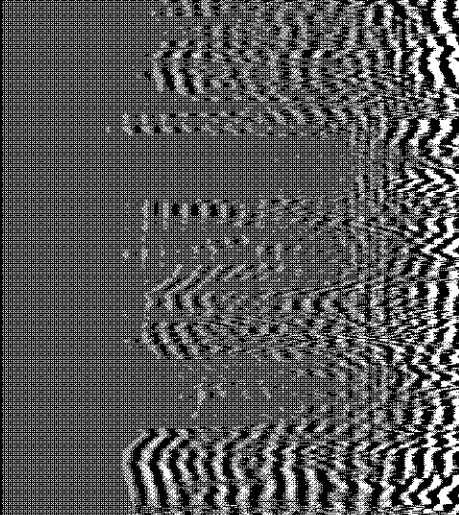
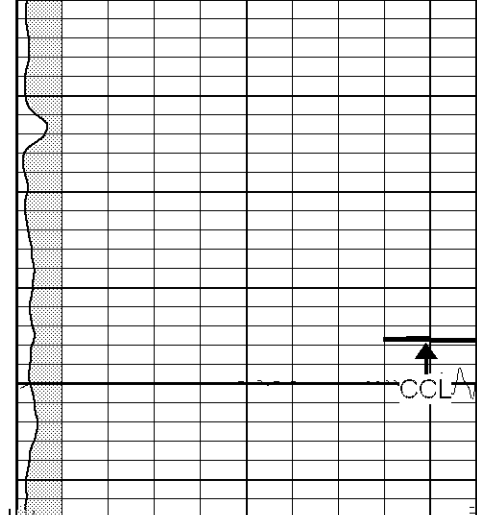
1350

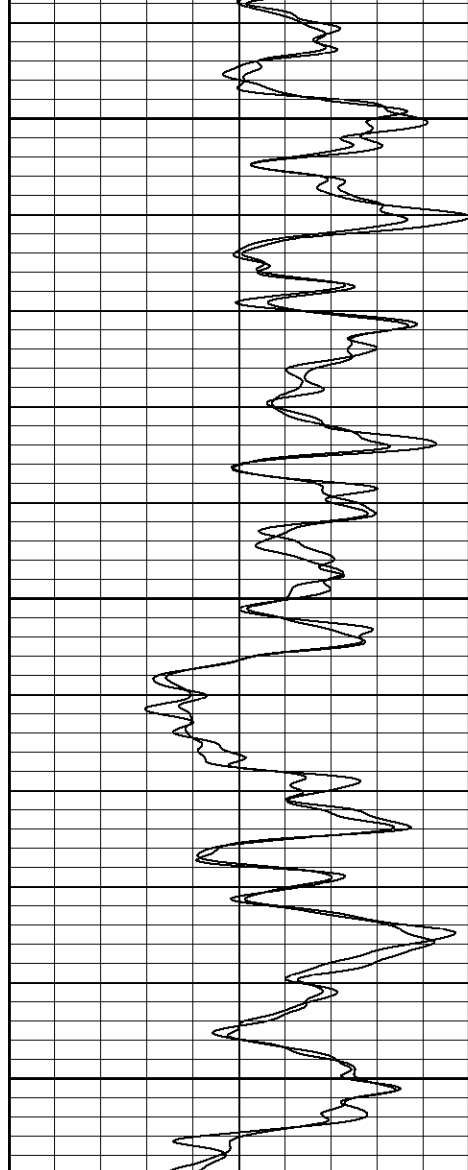
1400





1550

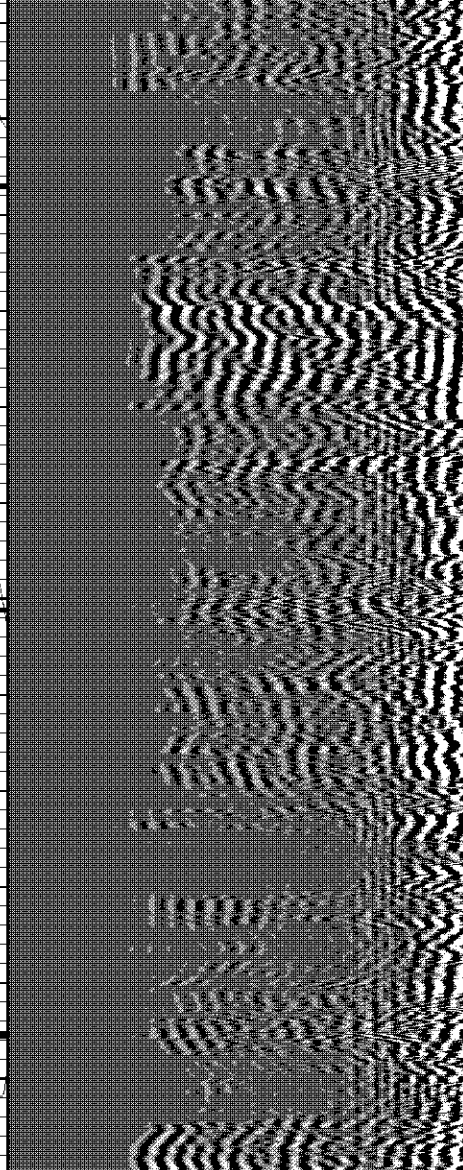
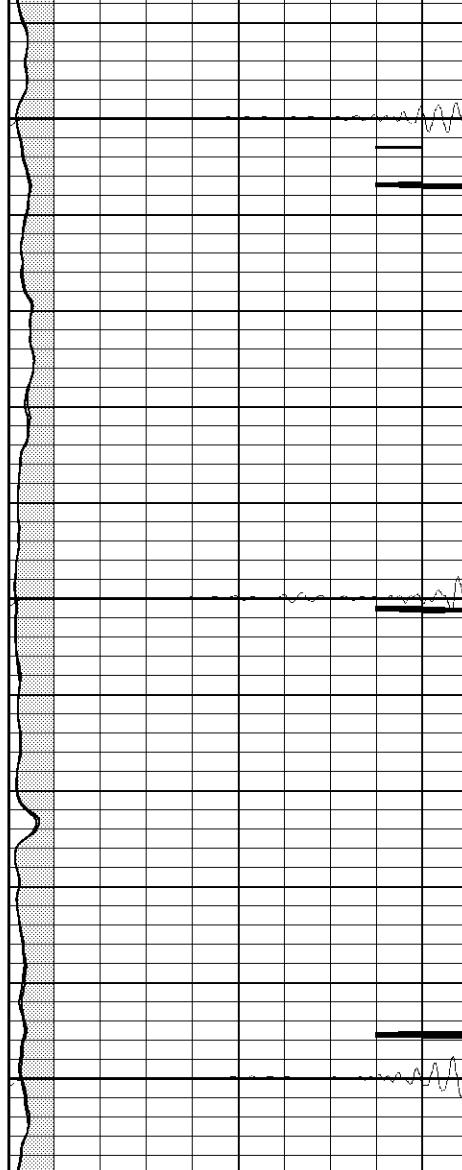




1450

1500

1550



Signal Zero:	1	1	mV
Calibrated Amplitude:	85	71.921	mV
Reading at Signal Zero:	0.00546875	0.00556641	V
Reading in Free Pipe:	1.86	1.48699	V
Gain:	45.2945	47.8736	
Offset:	0.752296	0.733516	

Gamma Ray Calibration Report

Serial Number:	TITAN2	
Tool Model:	T2	
Performed:	Fri Jul 14 08:11:42 2006	
Calibrator Value:	200.0	GAPI
Background Reading:	54.0	cps
Calibrator Reading:	219.0	cps
Sensitivity:	1.2000	GAPI/cps

Sensor	Offset (ft)	Schematic	Description	Len (ft)	OD (in)	Wt (lb)
CHD	15.41		None	0.75	1.50	5.00
GR	13.40		GR-T2 (TITAN2) Titan5	2.52	2.44	25.00
WVF5	9.24		CBL-2 (Titan2)	7.23	2.44	110.00
WVF3	8.24					
CENT	4.91		X	3.00	1.69	25.00
CCL	0.70		CCL-T2 (Titan2)	1.91	2.75	15.00
			Short			
		Dataset:	/field/well/run1/_plots/_jobs/cbl			
		Total Length:	15.41 ft			
		Total Weight:	180.00 lb			
		O.D.	2.75 in			