

CEMENT BOND GAMMA RAY COLLAR CORRELATION LOG

WATTENBERG
WELD
COLORADO
Field
County
State

Company K. P. KAUFFMAN

Well STROH 7-33

Field WATTENBERG

County WELD

State COLORADO

Location: API #: 05-123-26390-00

Other Services

SWNE
1980' FNL & 1980' FEL

PERF

SEC 33 TWP 4N RGE 67W

Elevation

Permanent Datum GROUND LEVEL Elevation 4868

Log Measured From KELLY BUSHING

K.B. 4880

Drilling Measured From KELLY BUSHING

D.F. 4879

G.L. 4868

	24-OCT-2007		
ber	ONE		
ller	7389		
gger	7335		
ogged Interval	7330		
nterval	3190		
e Size	7 7/8		
d	WATER		
viscosity	---		
orded Temp.	NOT RECORDED		
l Cement Top	3320		
l Ready	---		
ger on Bottom	---		
rt Number	2337/GREEN/CR29		
	BRIGHTON		
By	JACKSON		
d By	MR. RICK OHLEMEIER		

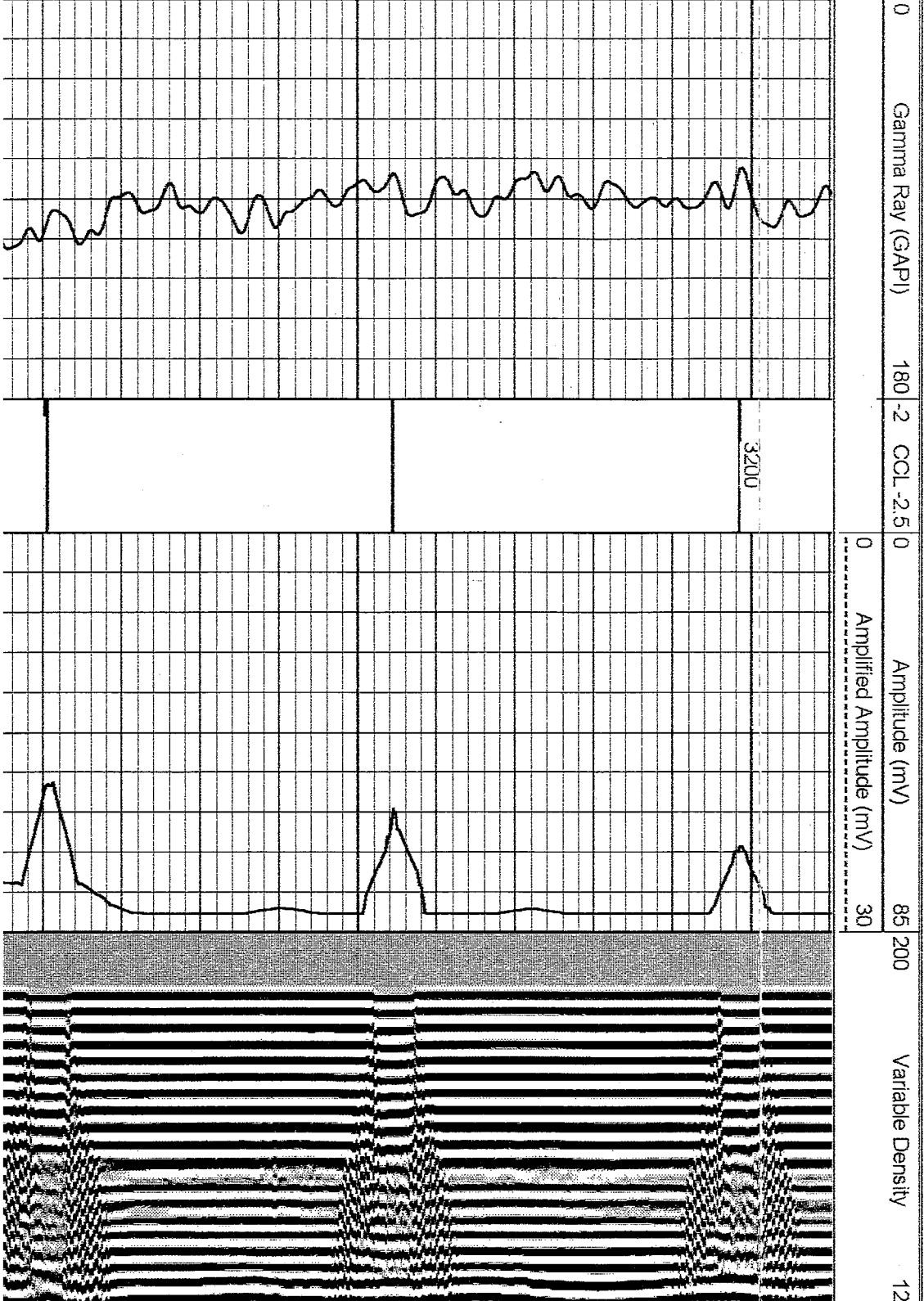
Borehole Record				Tubing Record			
ber	Bit	From	To	Size	Weight	From	To
Record		Size		Wgt/Ft		Top	Bottom
ring							
g							
String	1 1/2		11.6		SURFACE		TOTAL DEPTH

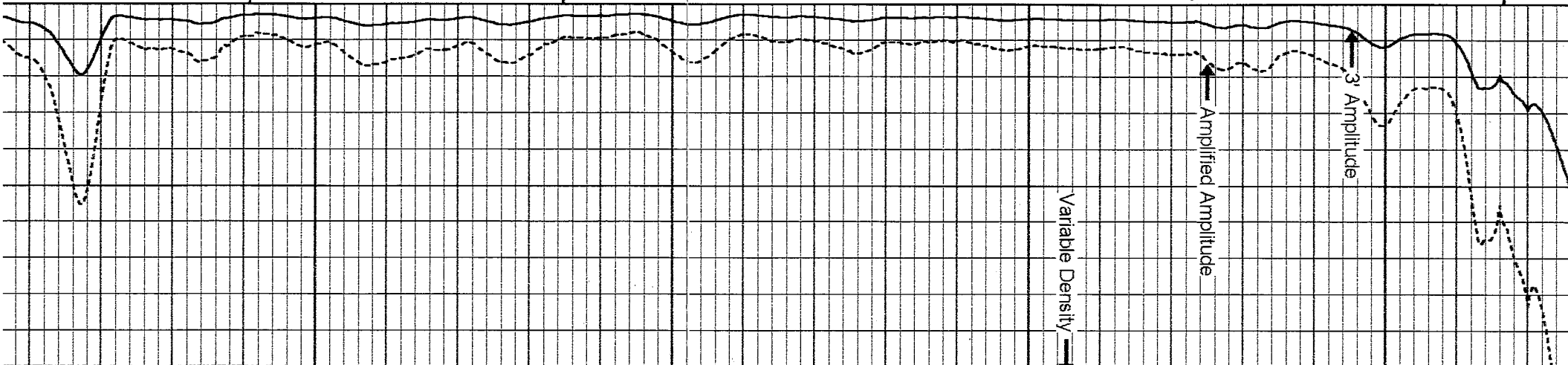
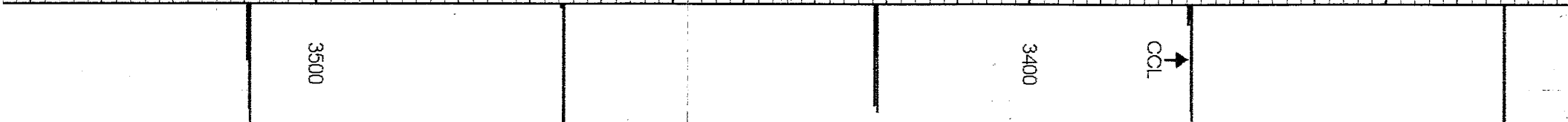
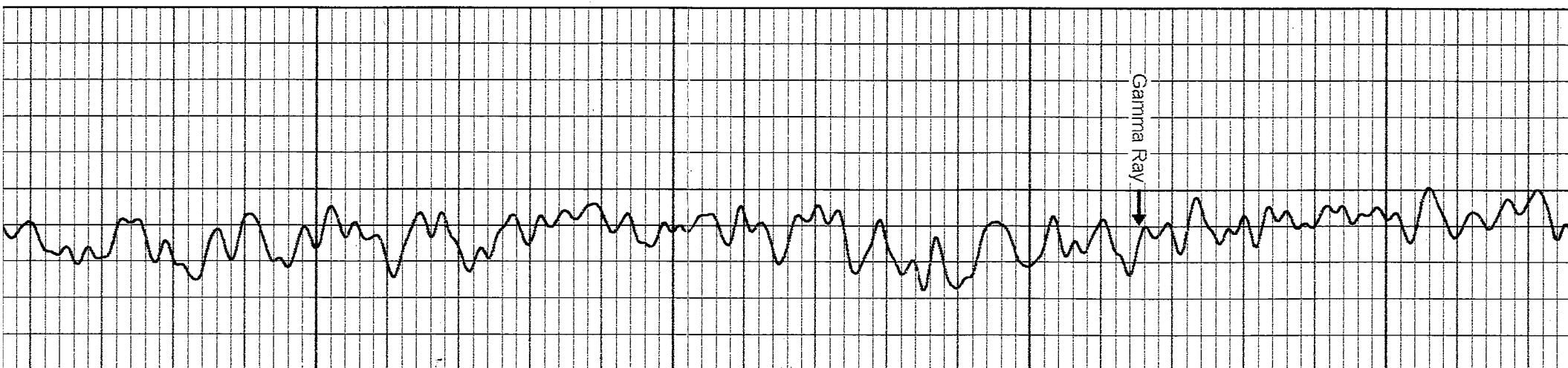
All interpretations are opinions based on inferences from electrical or other measurements and we cannot and do not guarantee the accuracy or correctness of any interpretation, and we shall not, except in the case of gross or willful negligence on our part, be liable or responsible for any loss, costs, damages, expenses incurred or sustained by anyone resulting from any interpretation made by any of our officers, agents or employees. These interpretations are also subject to our general terms and conditions set out in our current Price Schedule.

Comments

LOG CORRELATED TO CDN/DIL DATED 17-OCT-2007

Database File: stroh733cbl.dlb
Dataset Pathname: pass1
Presentation Format: cblx
Dataset Creation: Wed Oct 24 08:31:58 2007 by Log Std Casedhole 07051
Charted by: Depth in Feet scaled 1:240





Gamma Ray

CCl

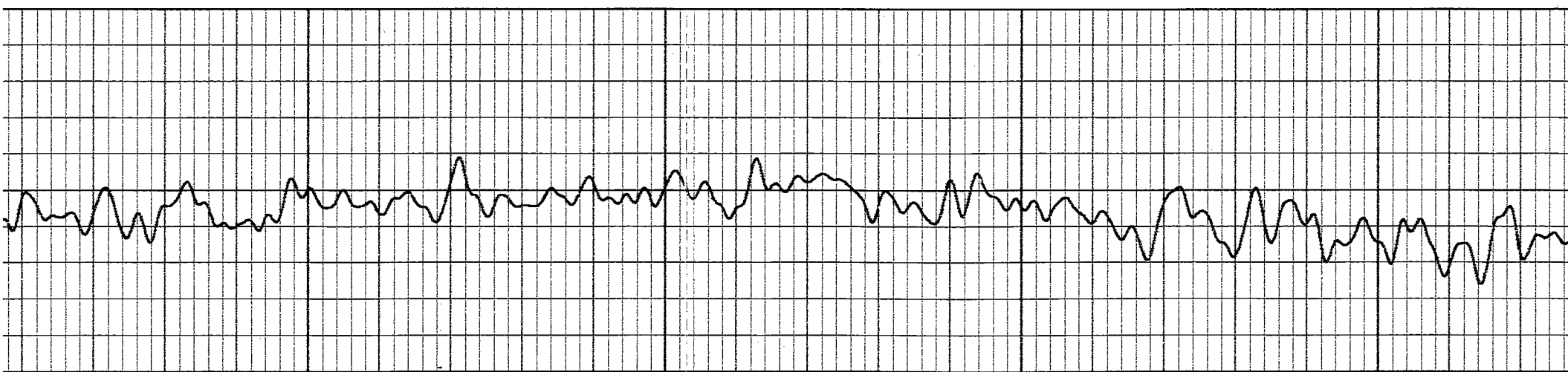
3400

3500

3' Amplitude

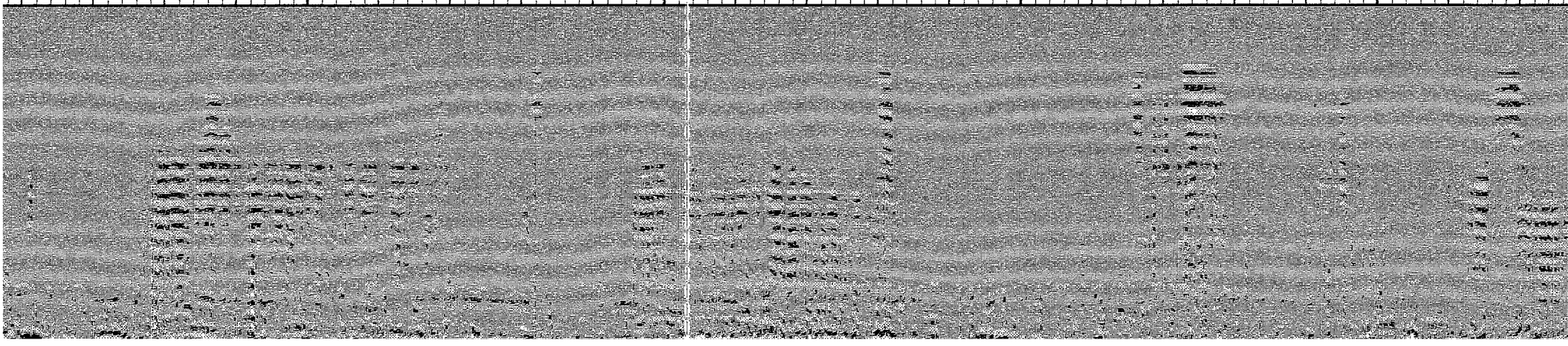
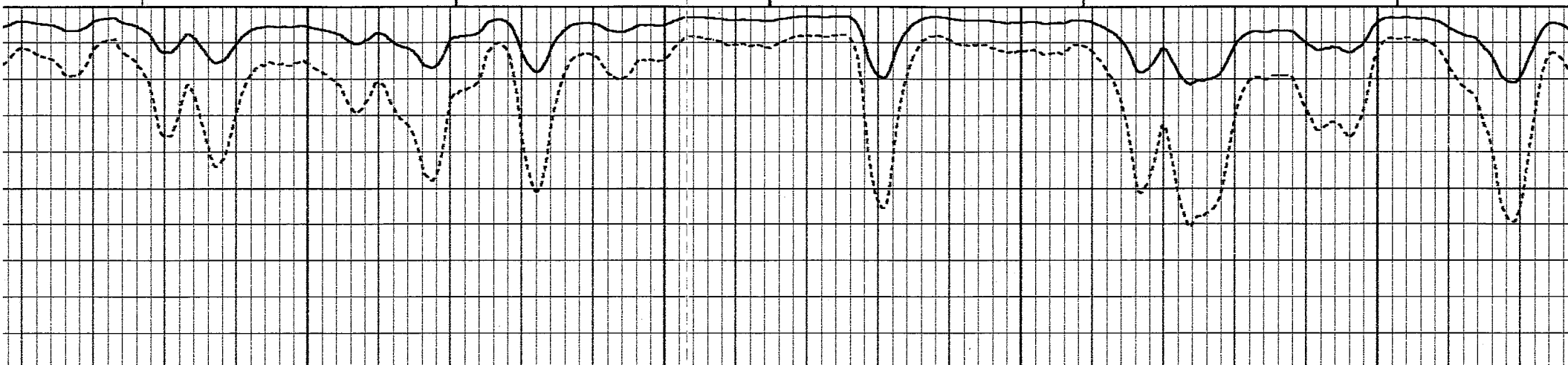
Amplified Amplitude

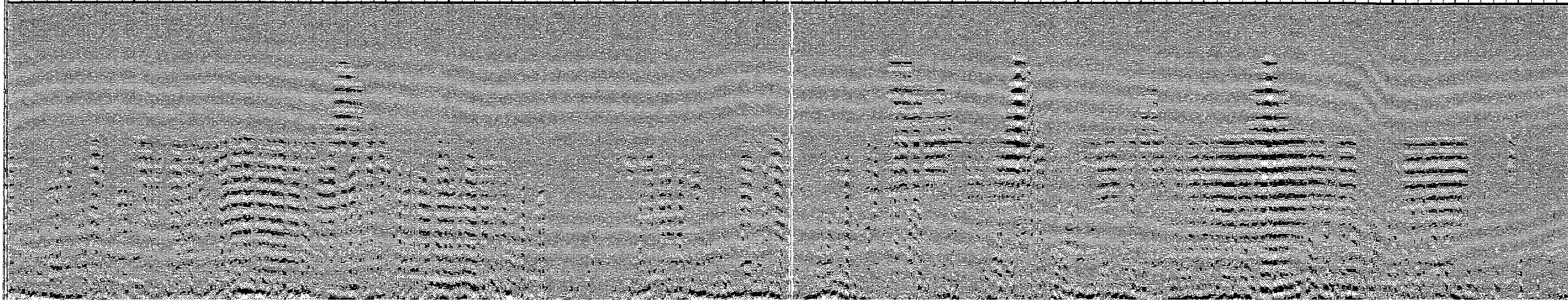
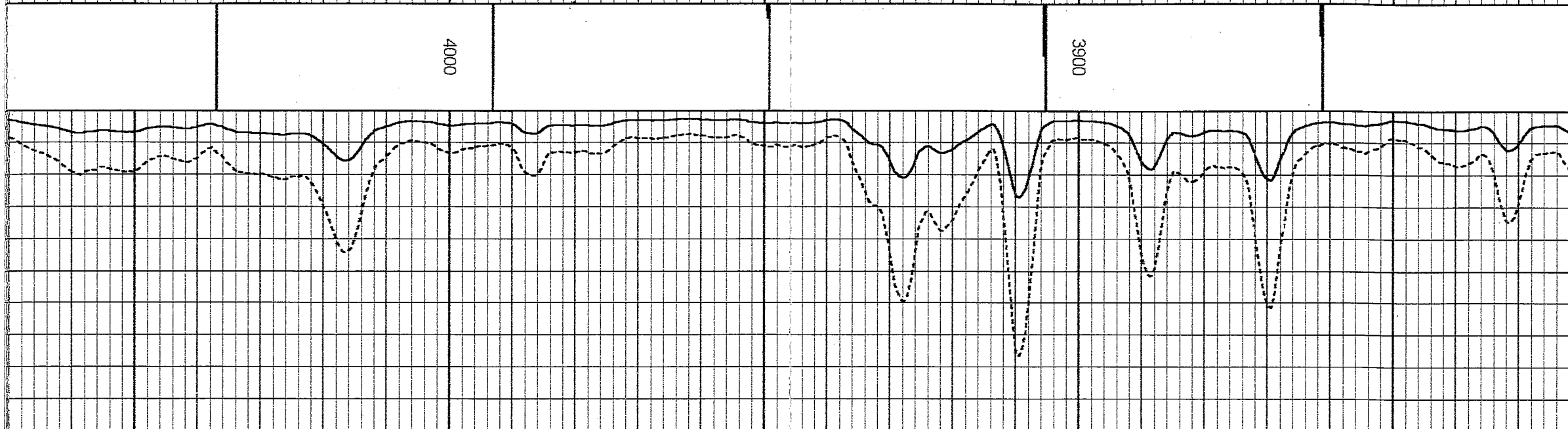
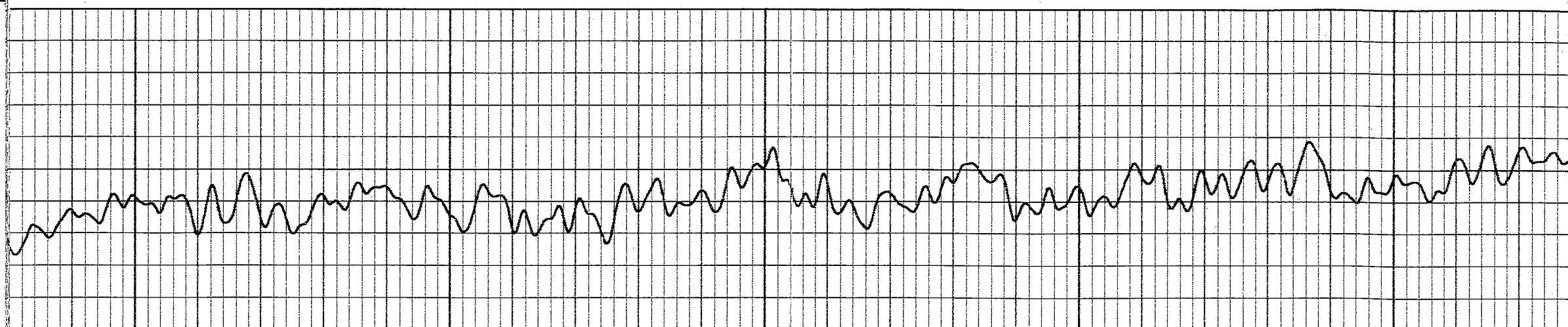
Variable Density

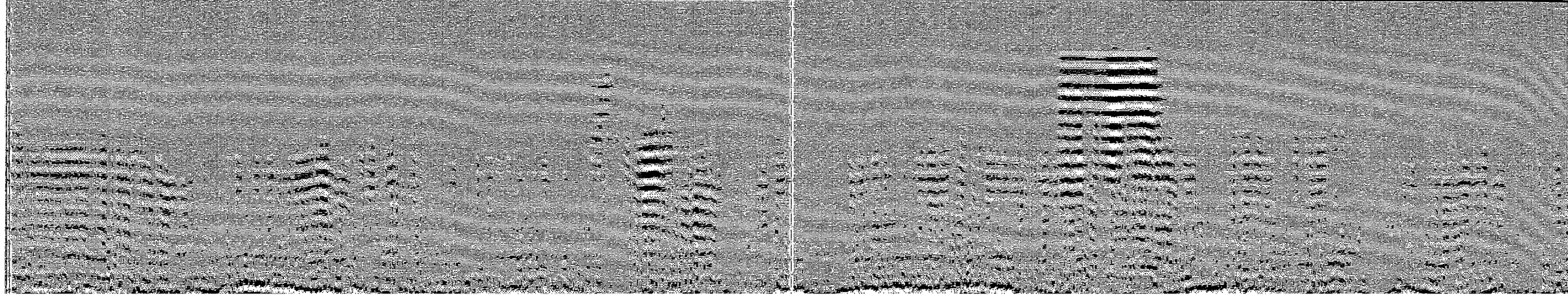
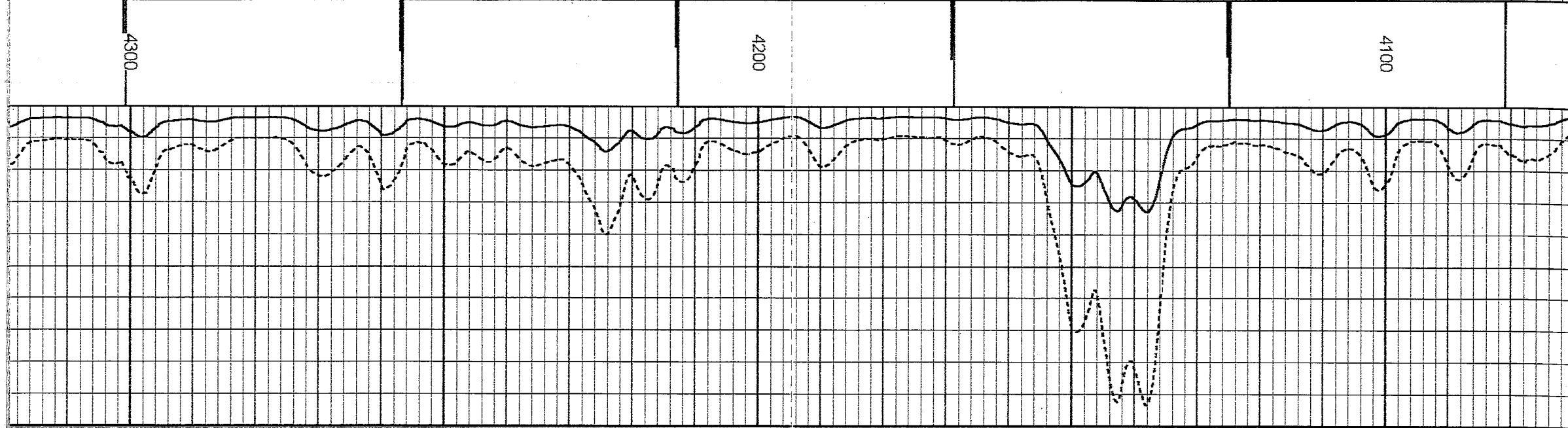
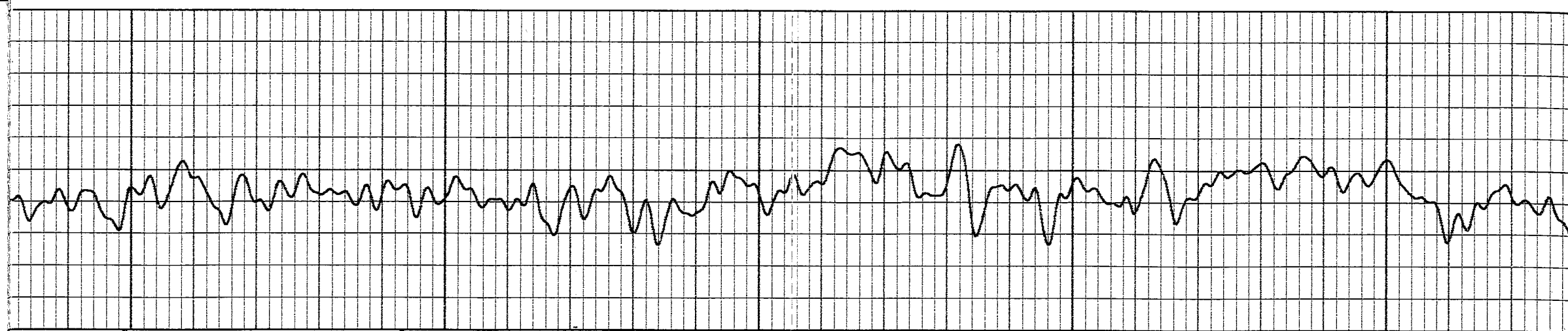


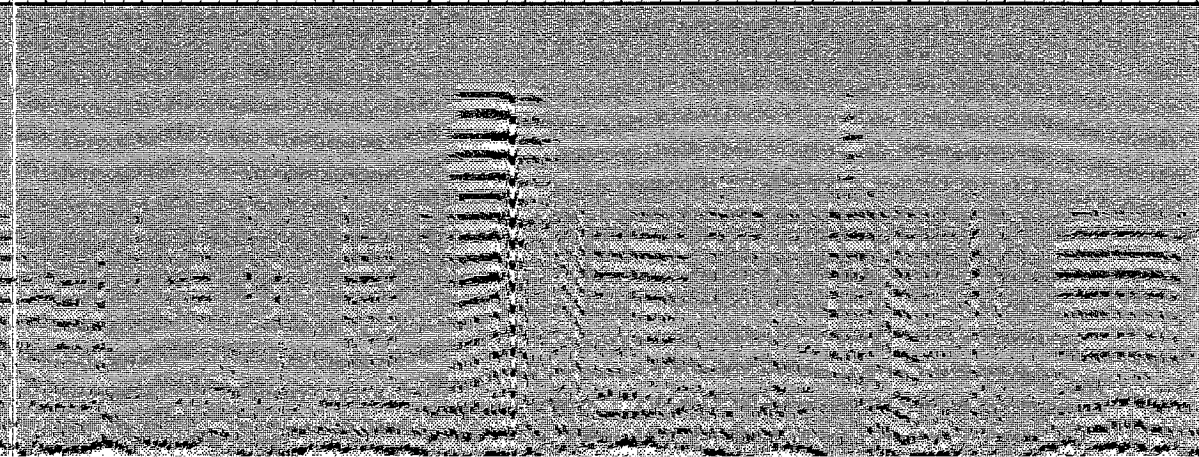
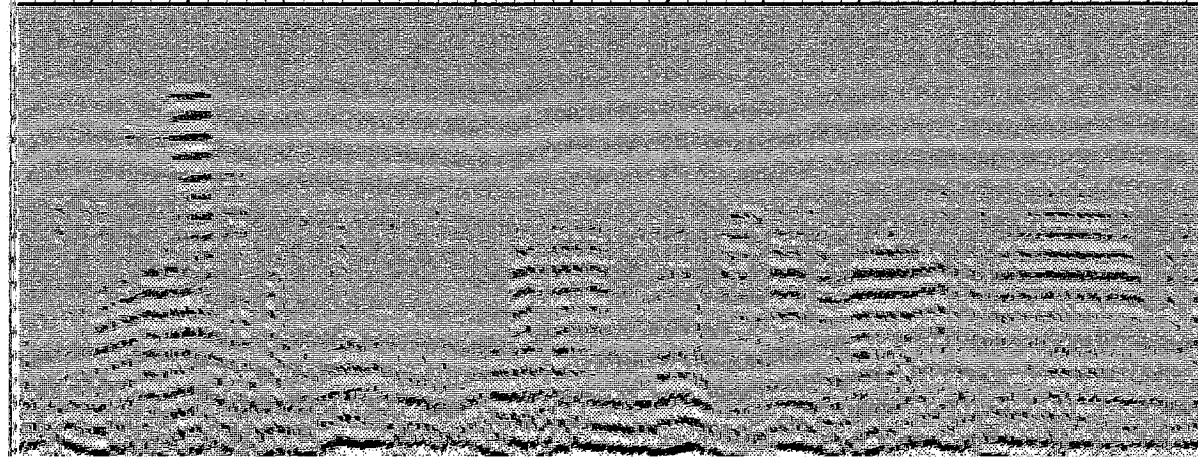
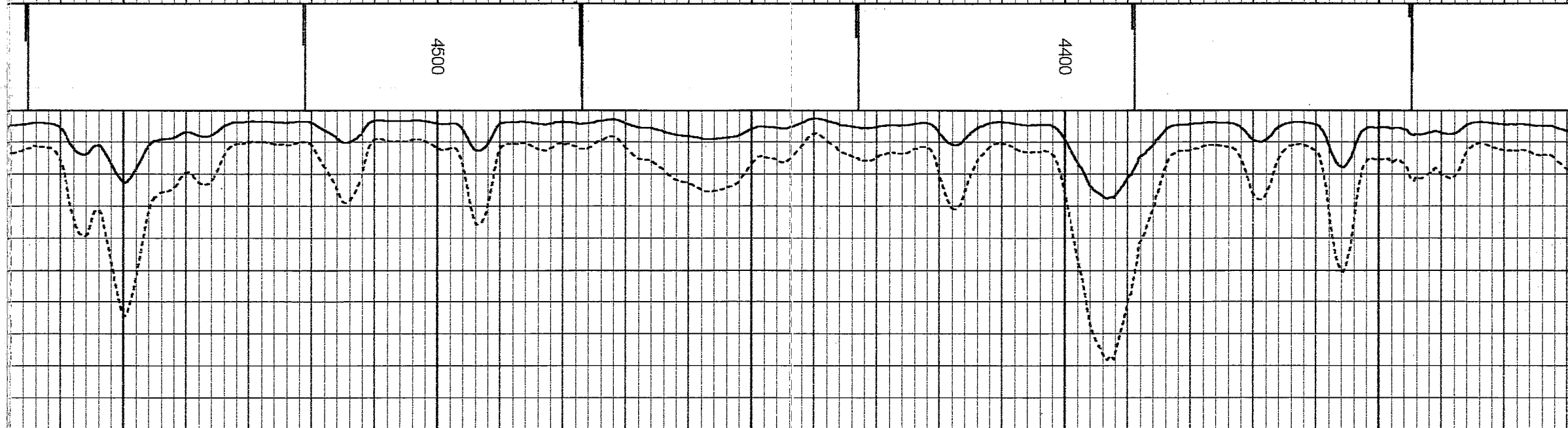
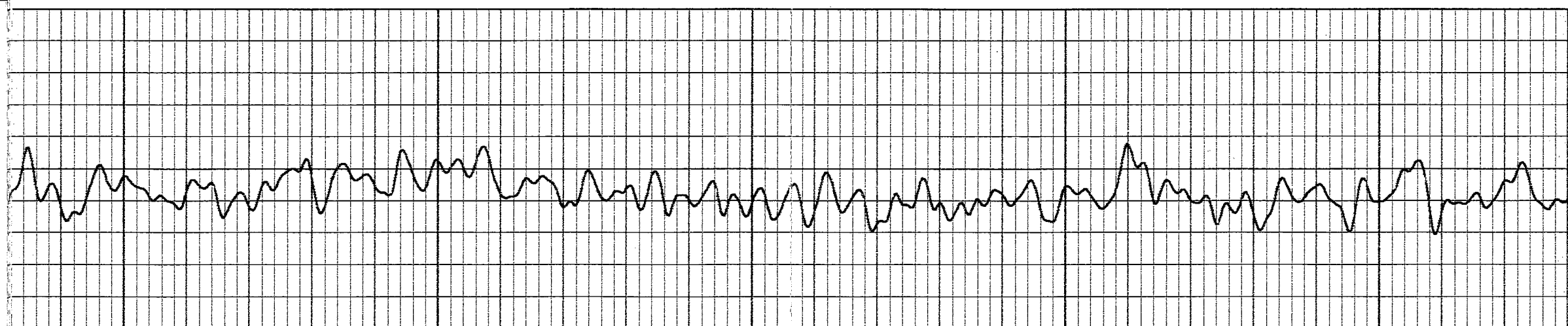
3700

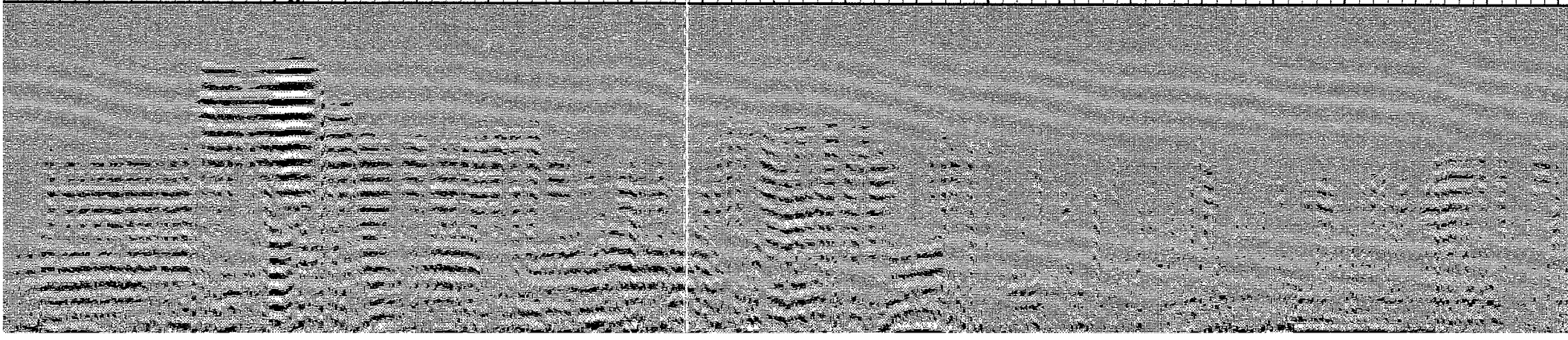
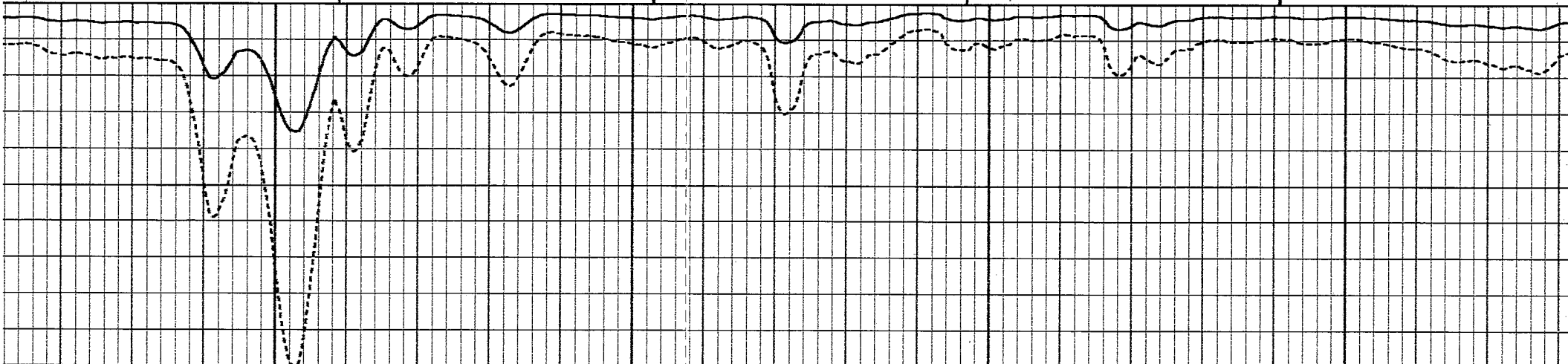
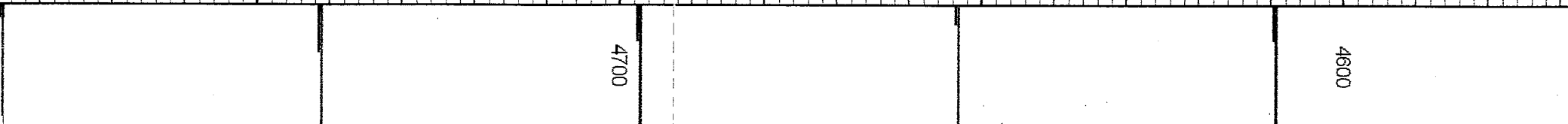
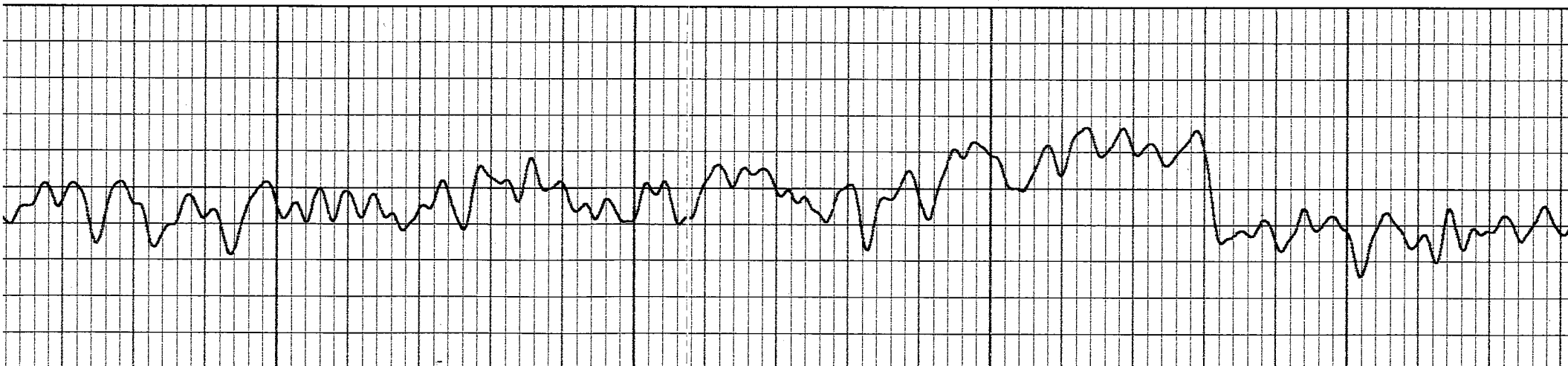
3600

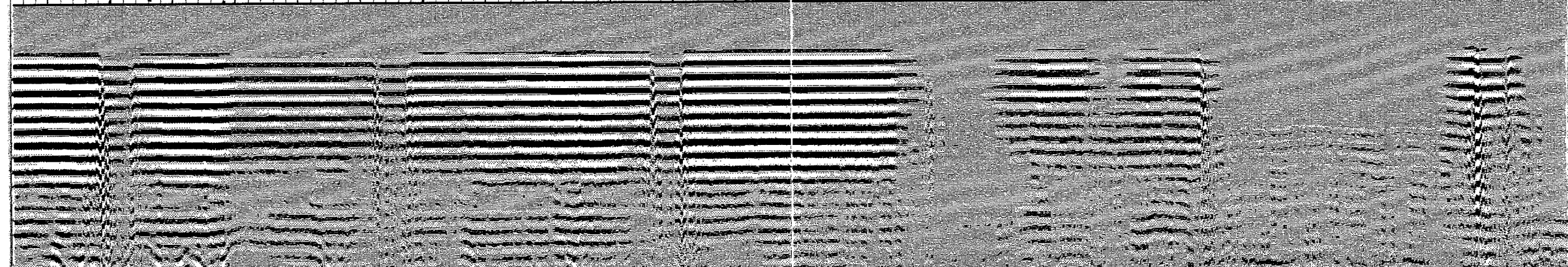
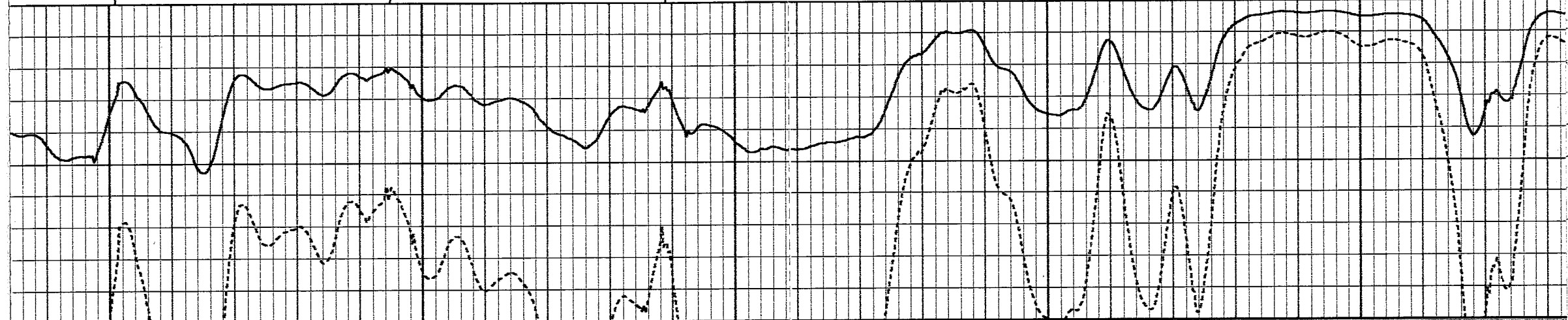
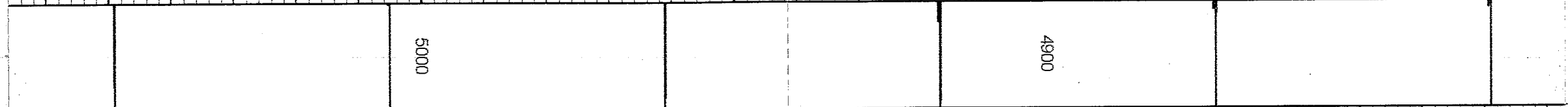
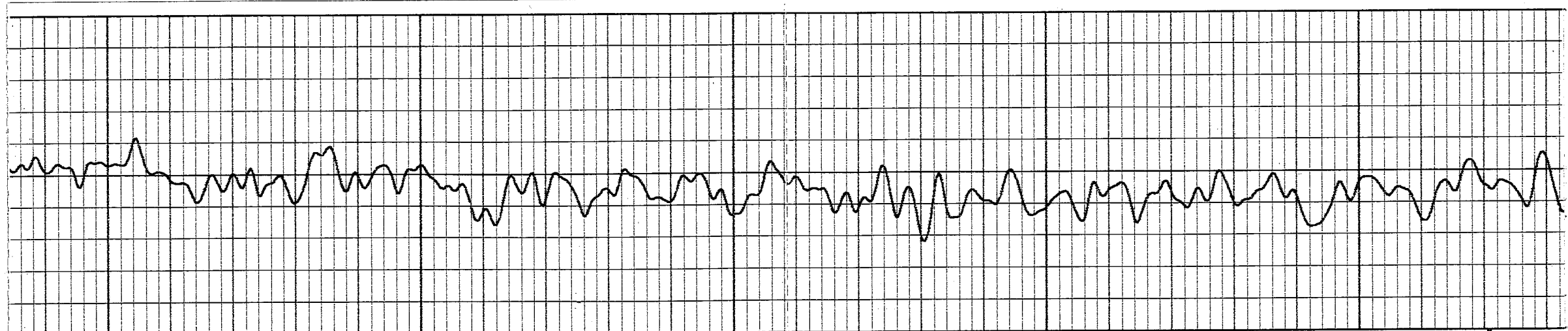


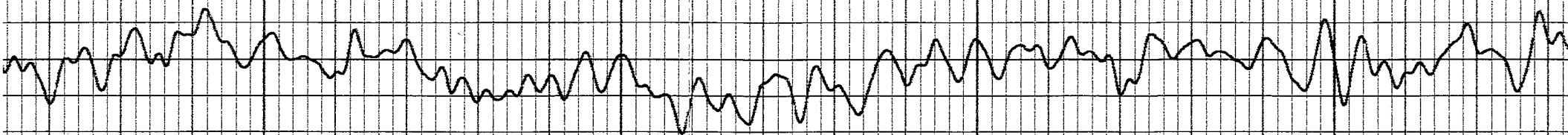






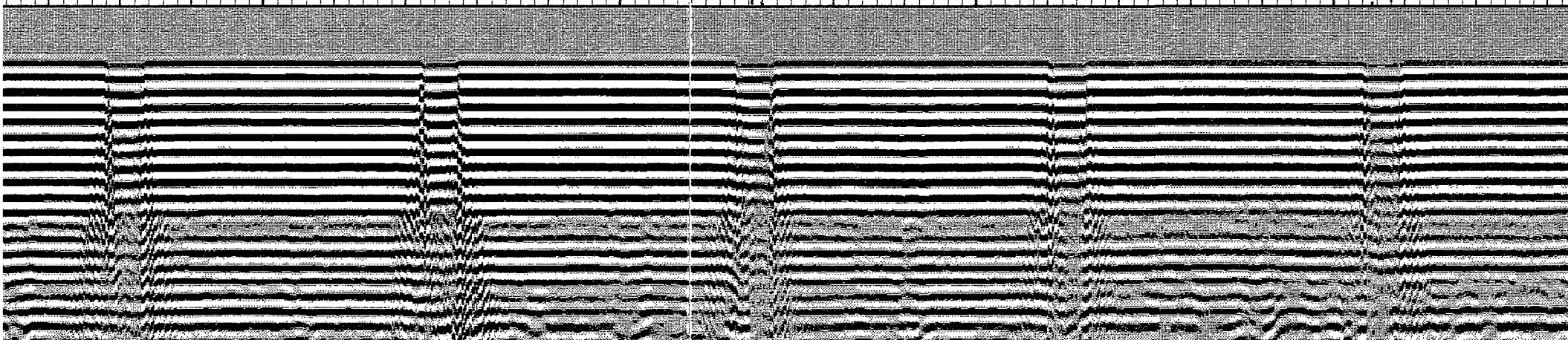
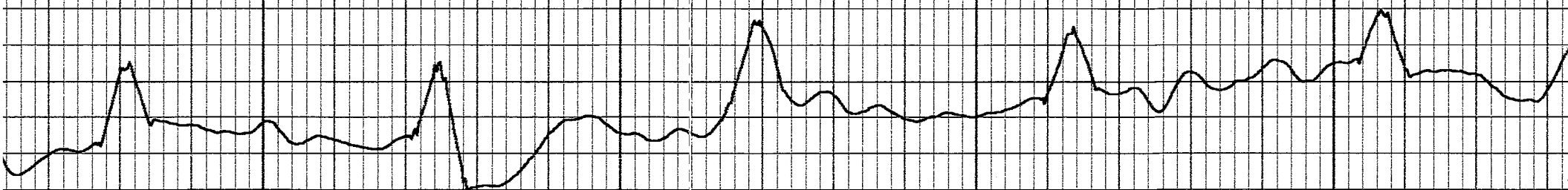


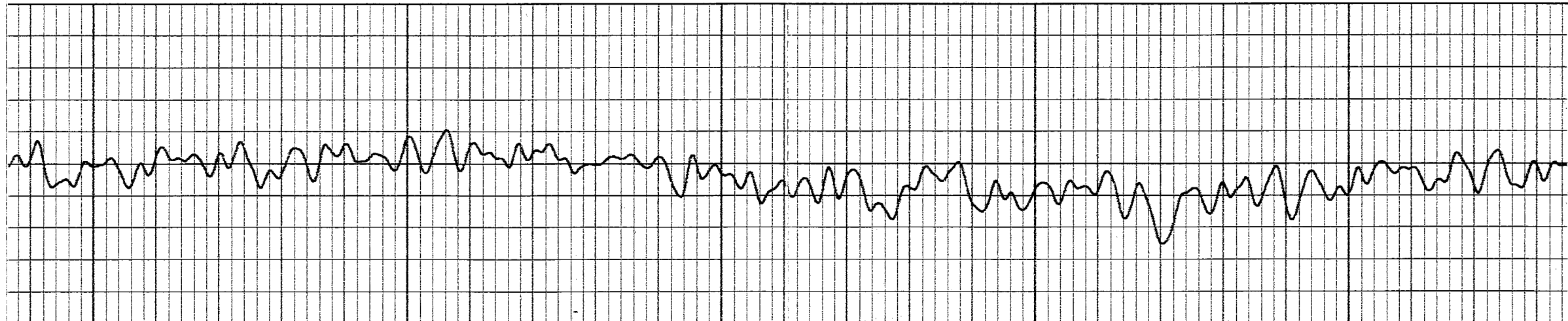




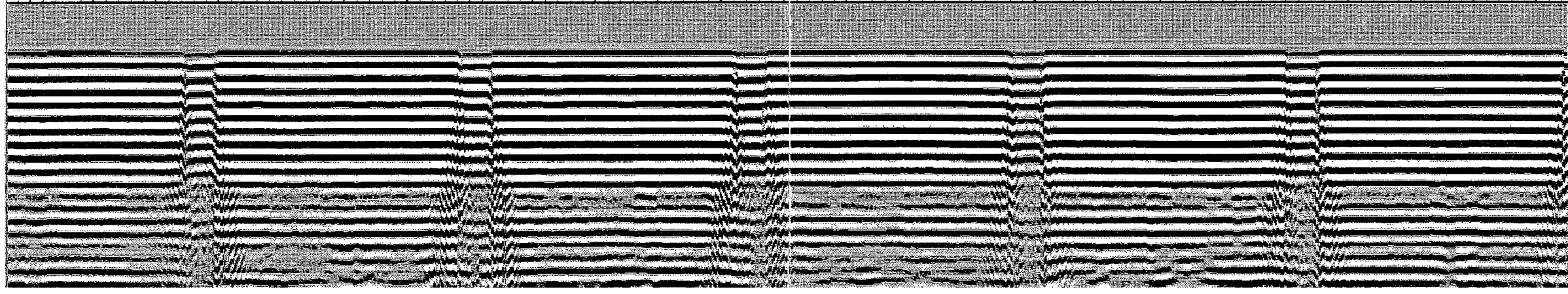
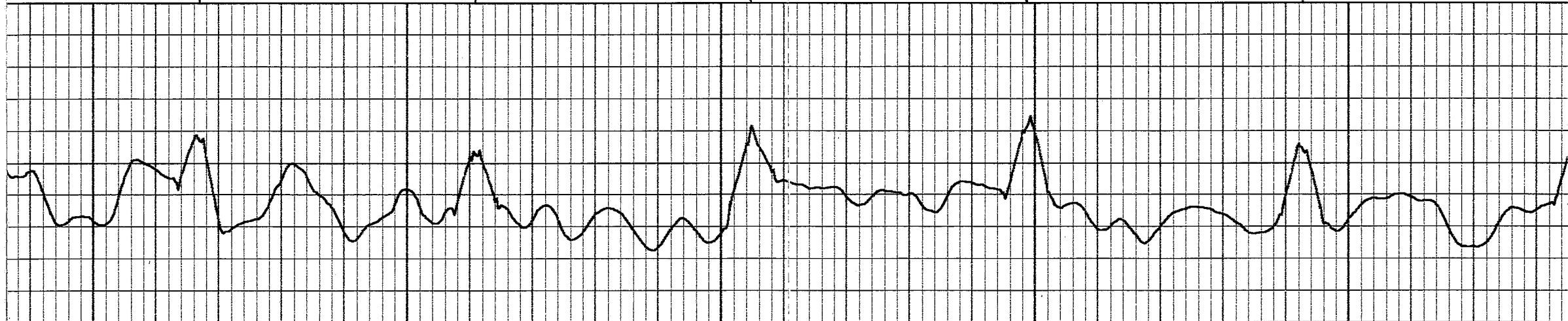
5200

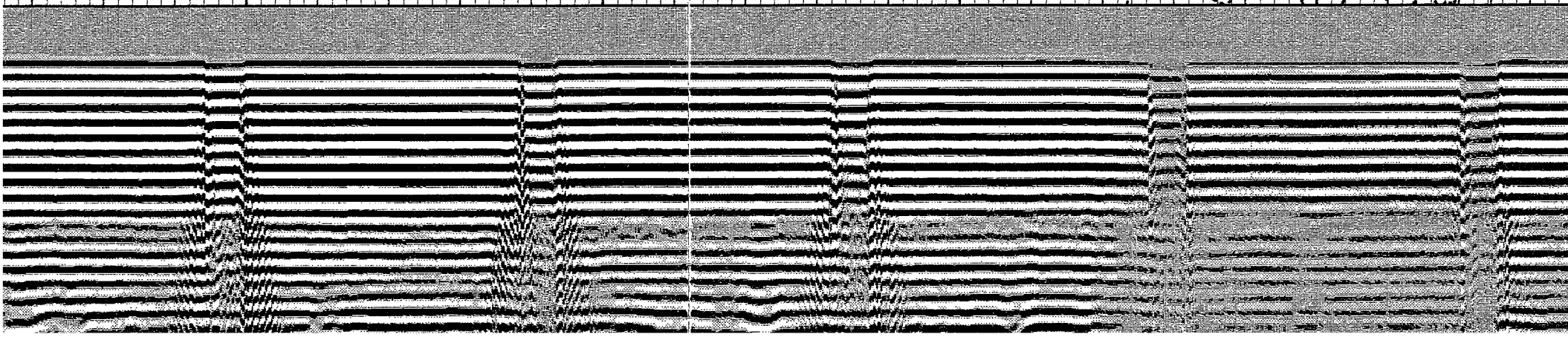
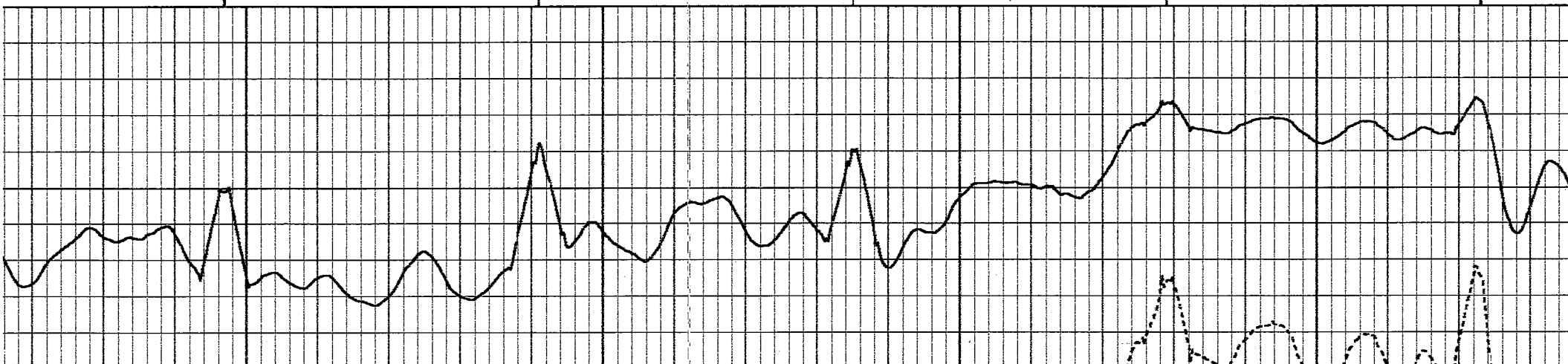
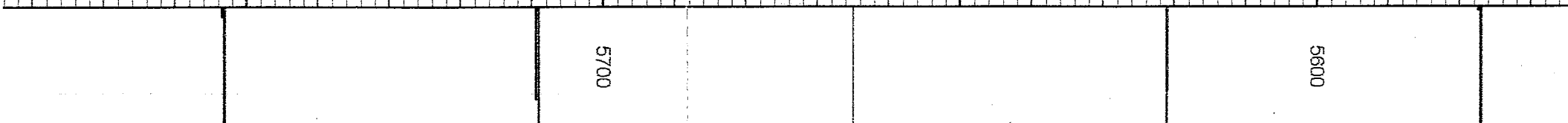
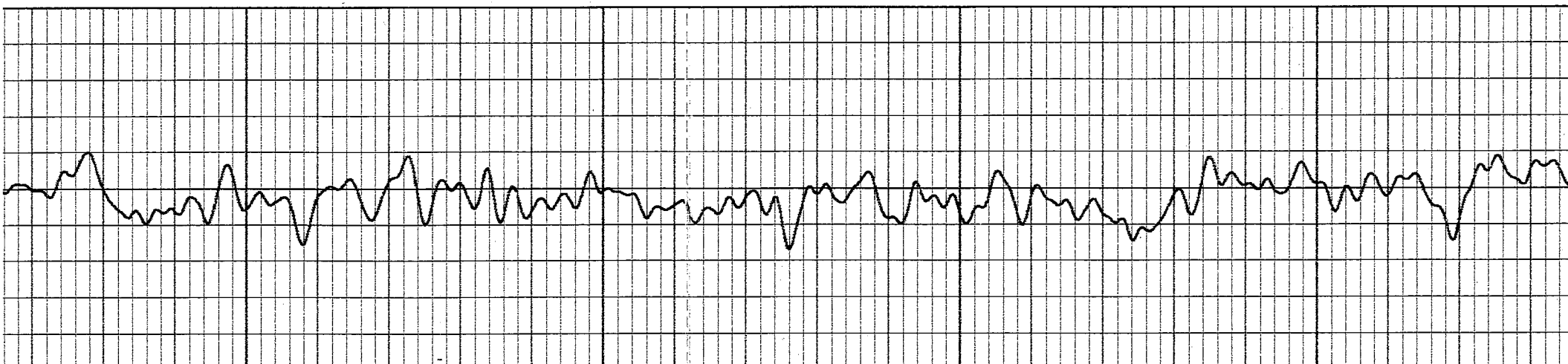
5100

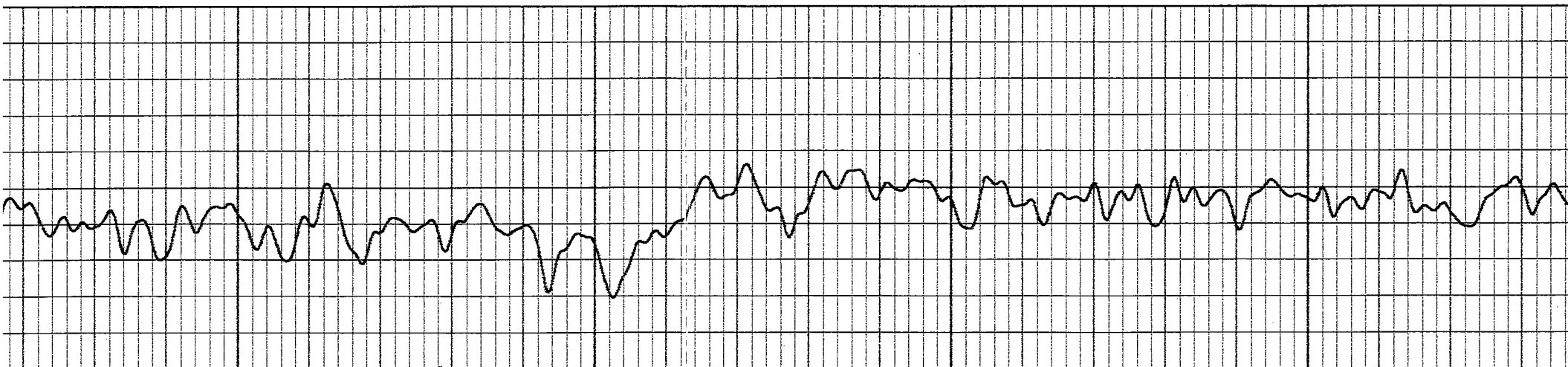




	5500		5400	
--	------	--	------	--

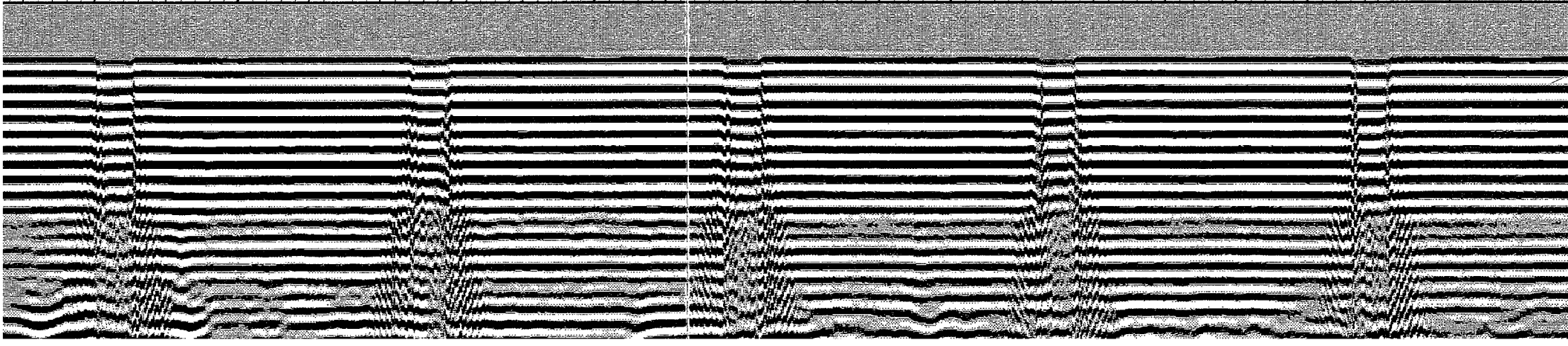
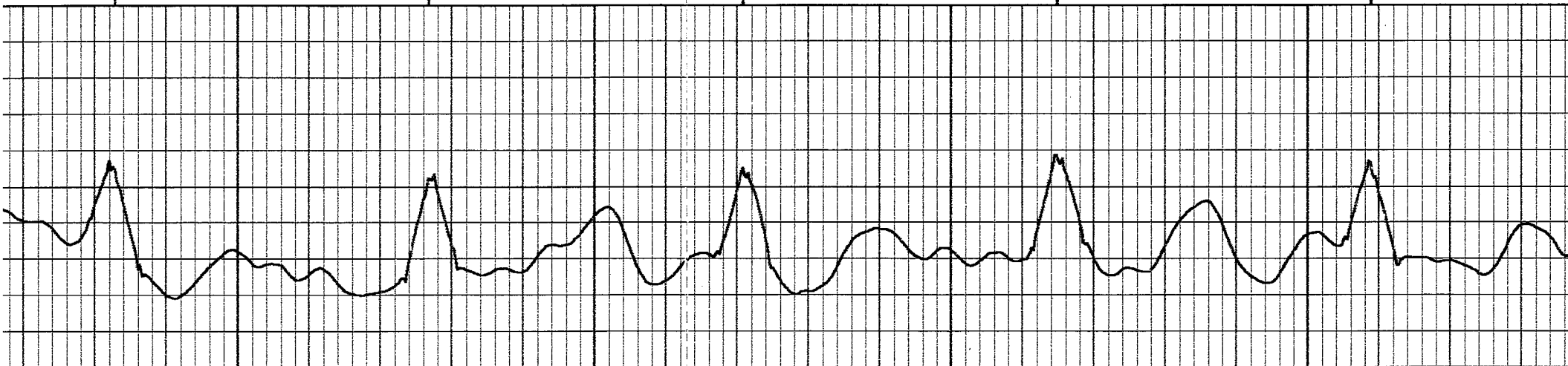






6000

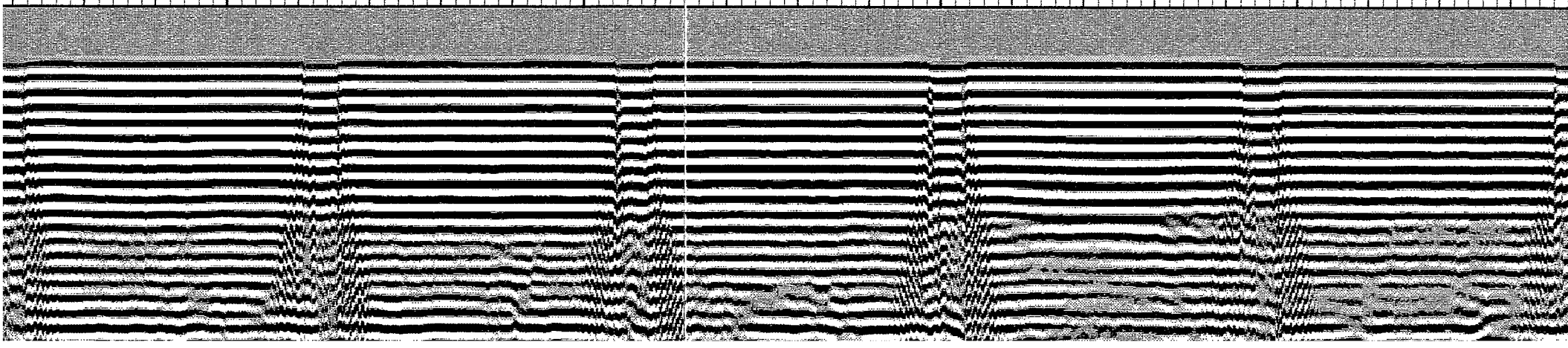
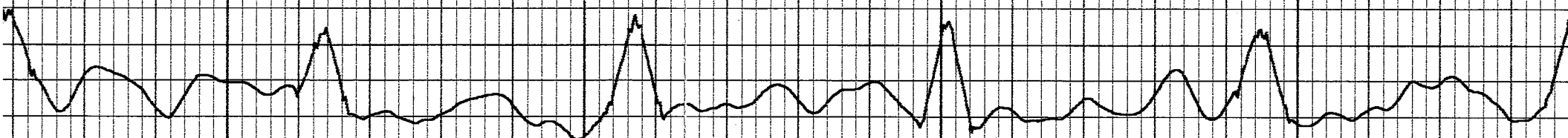
5900

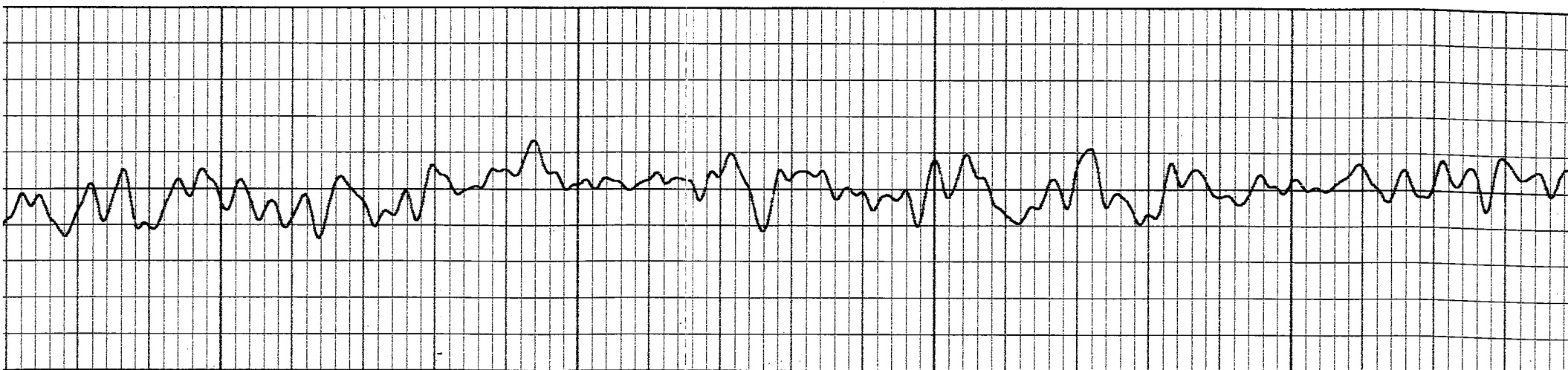




6200

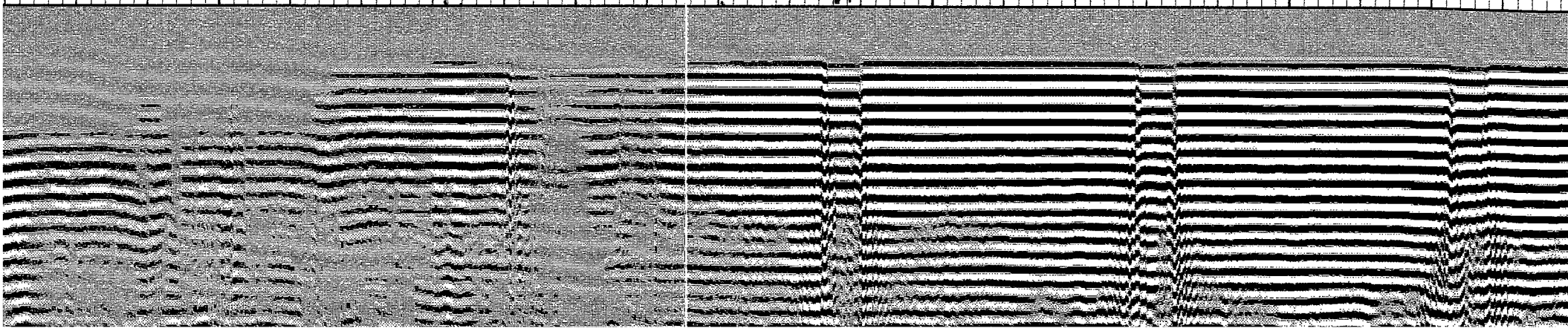
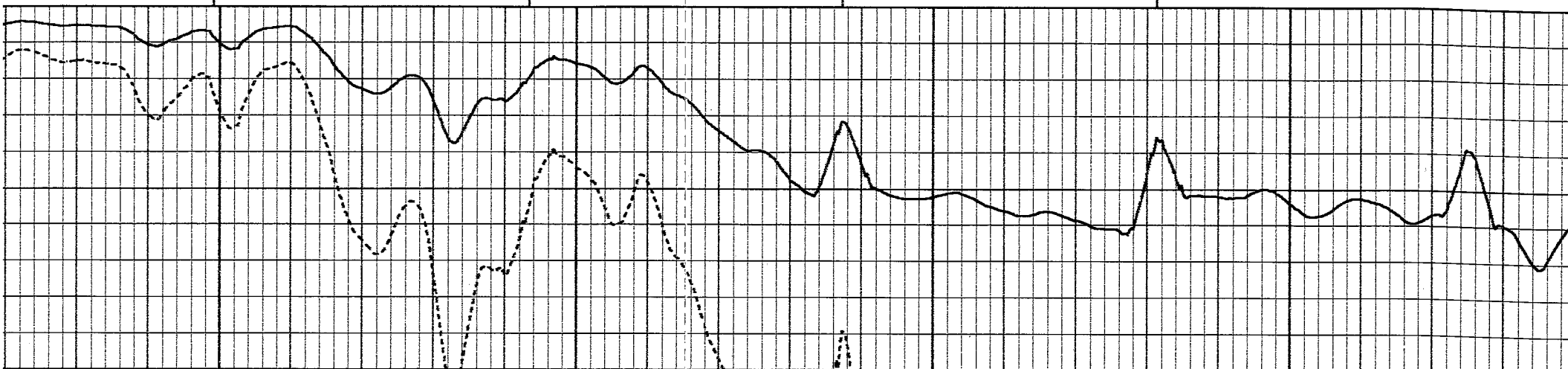
6100

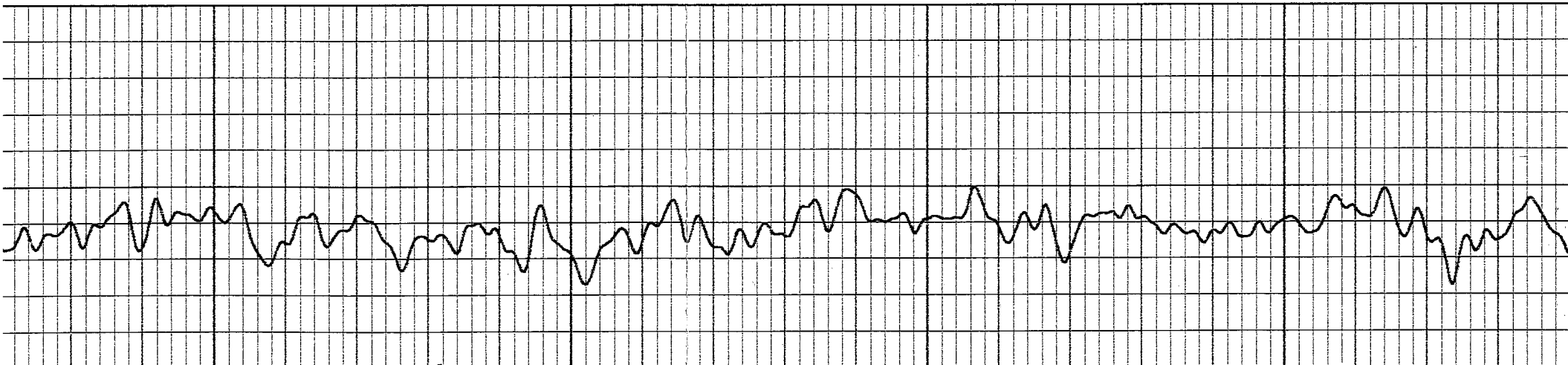




6500

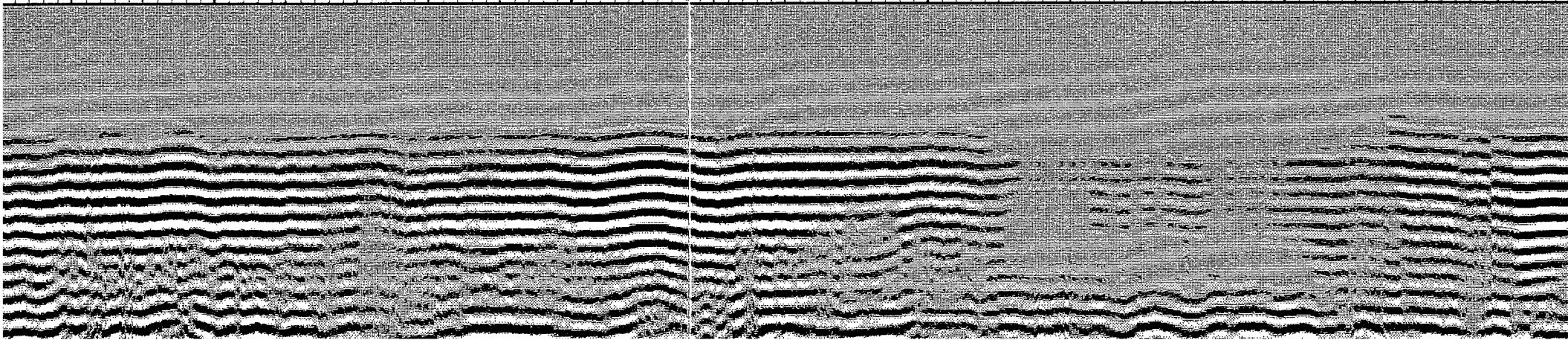
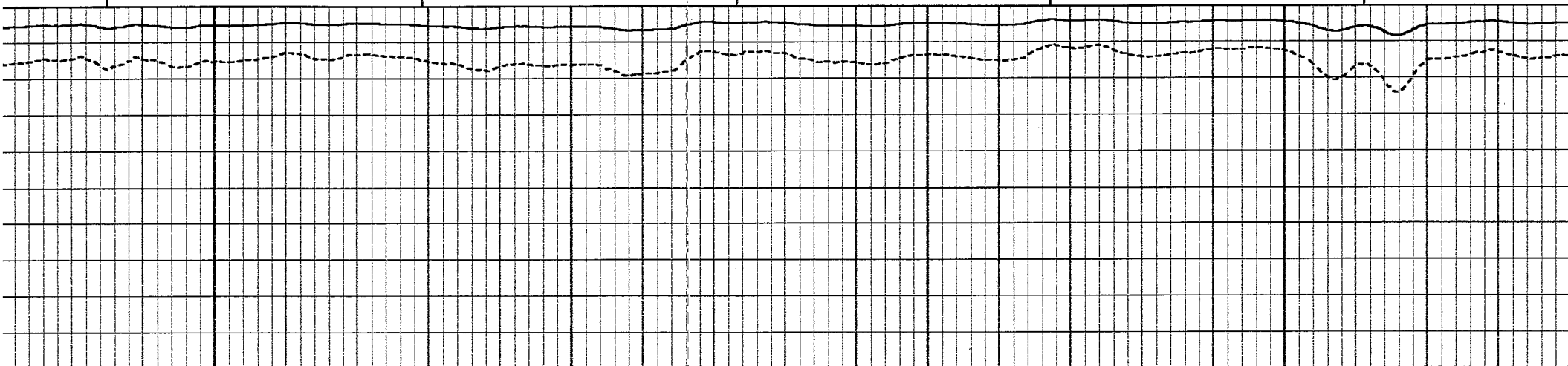
6400

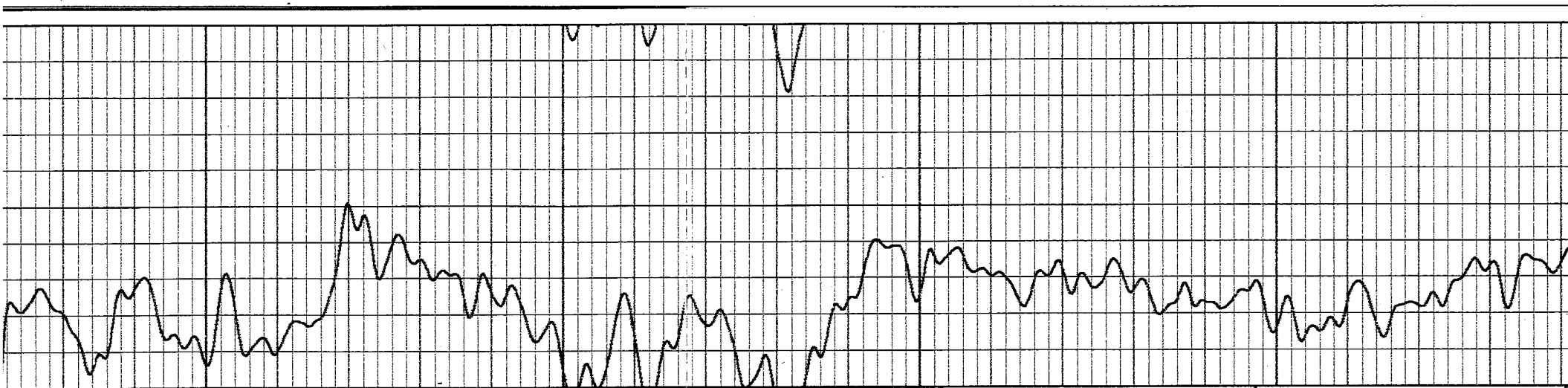




6700

6600





7000

6900

