



SUPERIOR
Black Lick, Pa.
Mercer, Pa.
Wooster, Oh.
Cleveland, Ok.
Trinidad, Co.

CEMENT BOND GAMMA RAY LOG

Company XTO Energy Inc.
Well Hill Ranch 36-06
Field Purgatoire River
County Las Animas
State CO

Company XTO Energy Inc.
Well Hill Ranch 36-06
Field Purgatoire River
County Las Animas
State CO

Location: 2127' FNL & 2221' FWL
API # : 05 071 09532 00

Other Services
temp.

SEC 36 TWP 34S RGE 67W
Permanent Datum Ground Level Elevation 7871'
Log Measured From Ground Level
Drilling Measured From Ground Level

Elevation
K.B. -----
D.F. -----
G.L. 7871'

Date	5-5-08					
Run Number	One					
Depth Driller	2490'					
Depth Logger	2351'					
Bottom Logged Interval	2350'					
Top Log Interval	Surface					
Open Hole Size	7 7/8"					
Type Fluid	Water					
Density / Viscosity	///					
Max. Recorded Temp.	125F					
Estimated Cement Top	Surface					
Time Well Ready	Portable Mast					
Time Logger on Bottom	11:30AM					
Equipment Number	T0698					
Location	Trinidad					
Recorded By	W. Hargrove				E. Ray	
Witnessed By						
Borehole Record						
Run Number	Bit	From	To	Size	Weight	To
Tubing Record						
Casing Record	Size		Wgt/Ft	Top		Bottom
Surface String	8 5/8"			00		464'
Prot. String						
Production String	5 1/2"			00		2442'
Liner						

<<< Fold Here >>>

All interpretations are opinions based on inferences from electrical or other measurements and we cannot and do not guarantee the accuracy or correctness of any interpretation, and we shall not, except in the case of gross or willful negligence on our part, be liable or responsible for any loss, costs, damages, or expenses incurred or sustained by anyone resulting from any interpretation made by any of our officers, agents or employees. These interpretations are also subject to our general terms and conditions set out in our current Price Schedule.

Comments

Lorencito to XTO hill, follow all the way to top, cross cattleguard,
drive past Hill Ranch 36-02, Next Location on Right



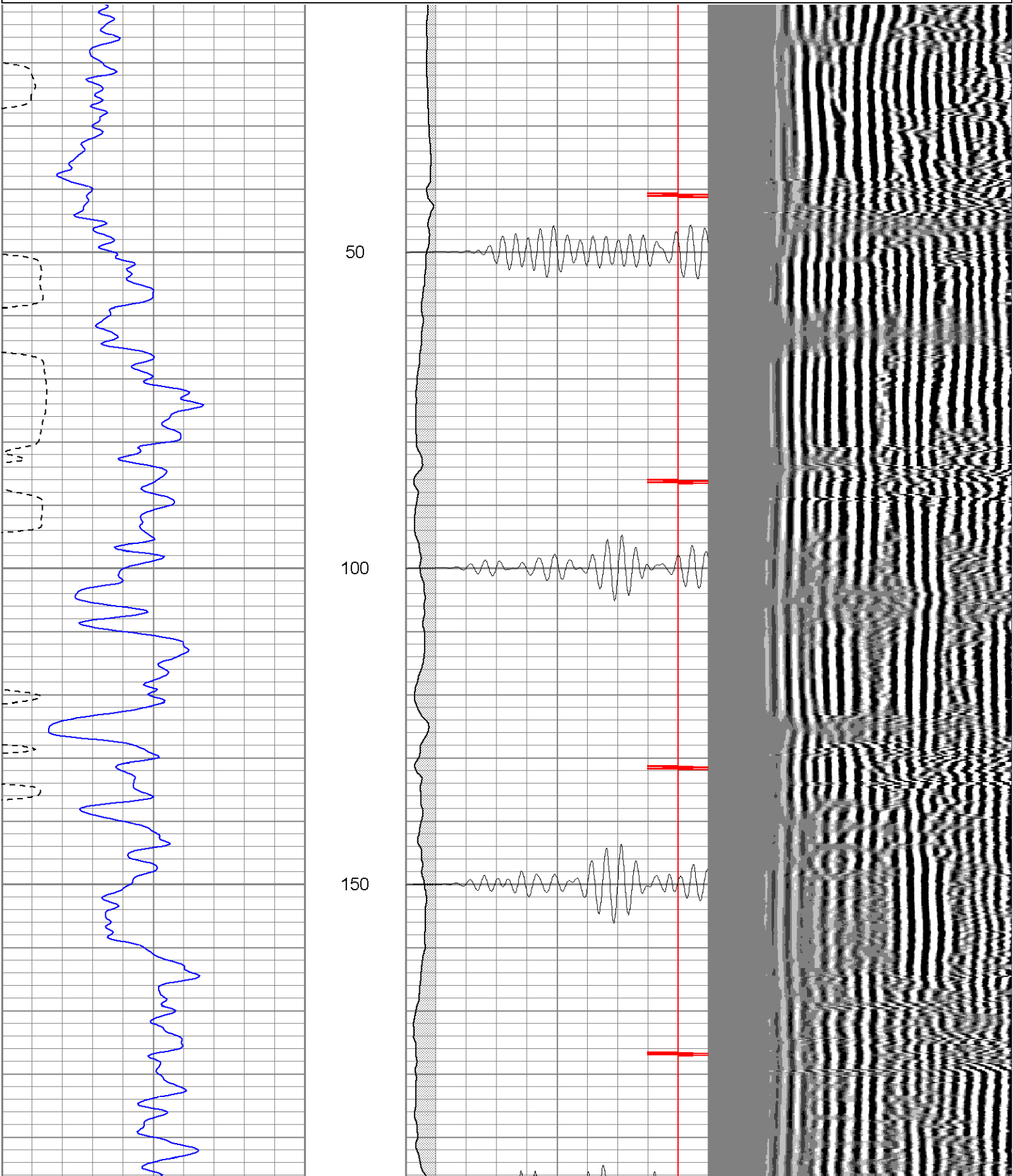
SUPERIOR

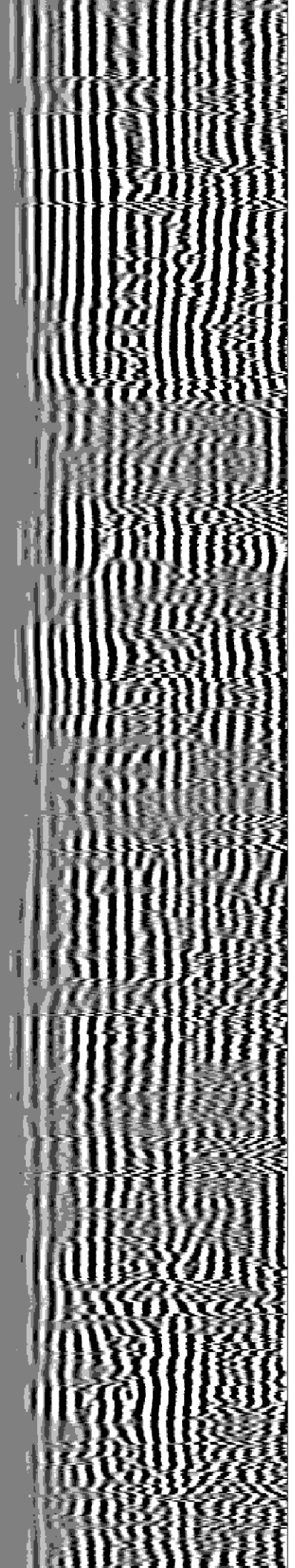
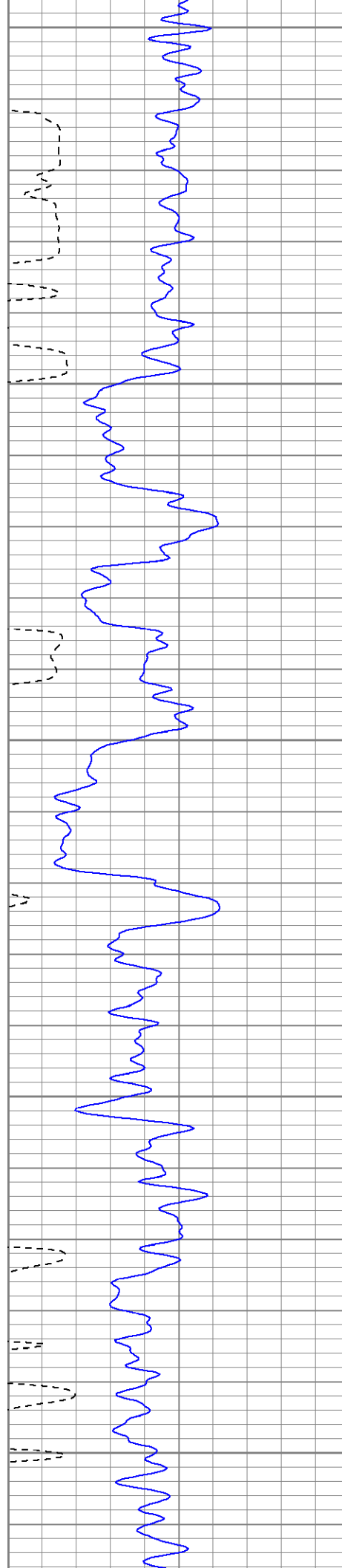
Black Lick, Pa.
Mercer, Pa.
Wooster, Oh.
Cleveland, Ok.
Trinidad, Co.

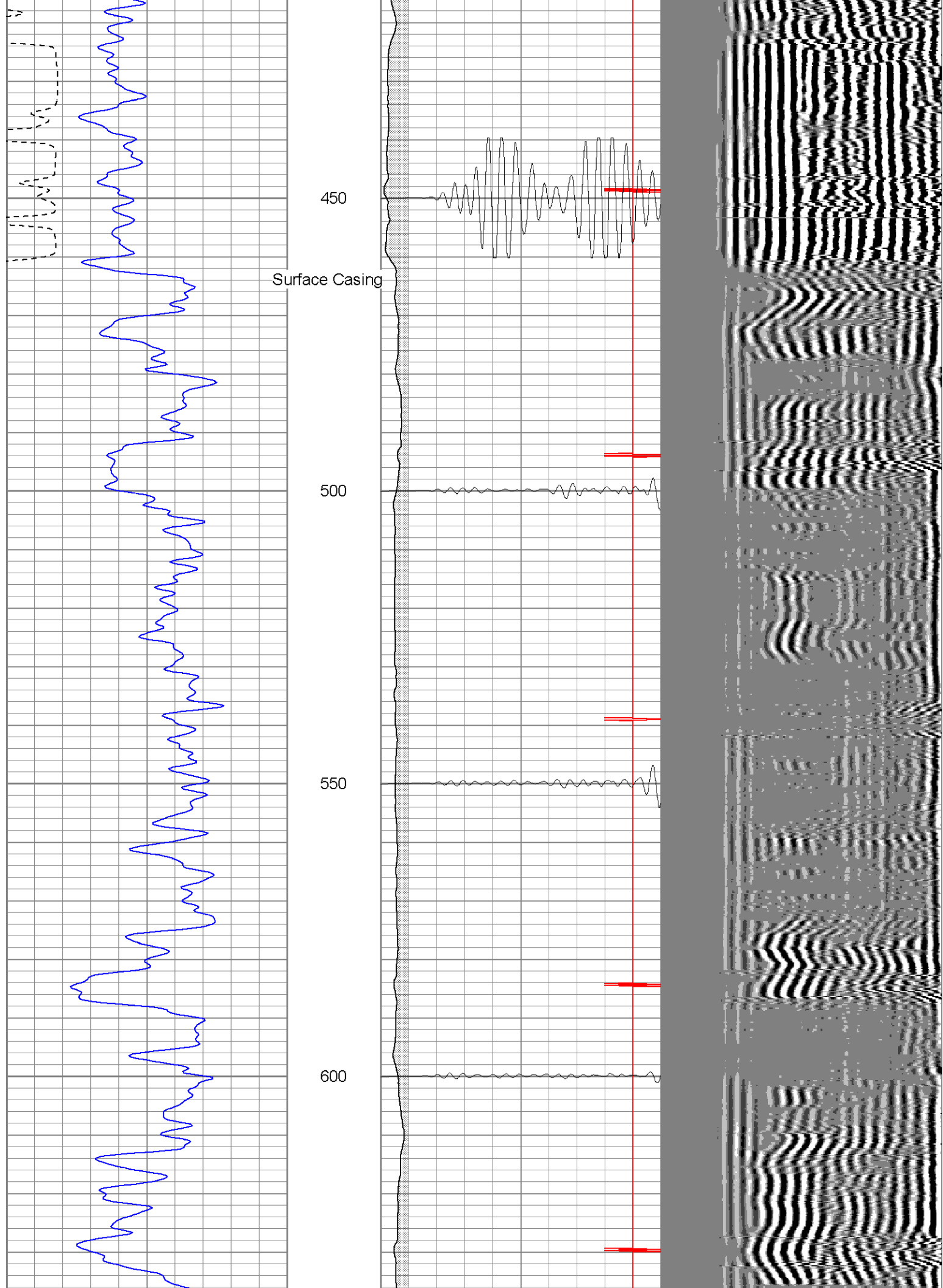
Main Pass

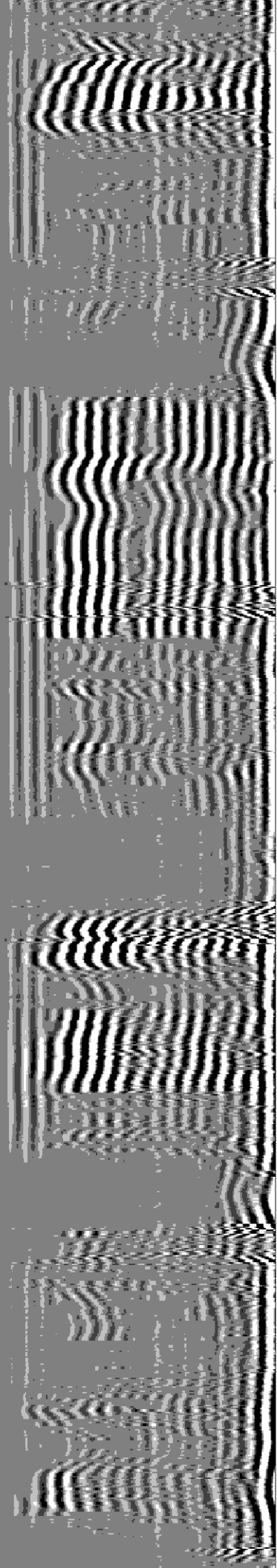
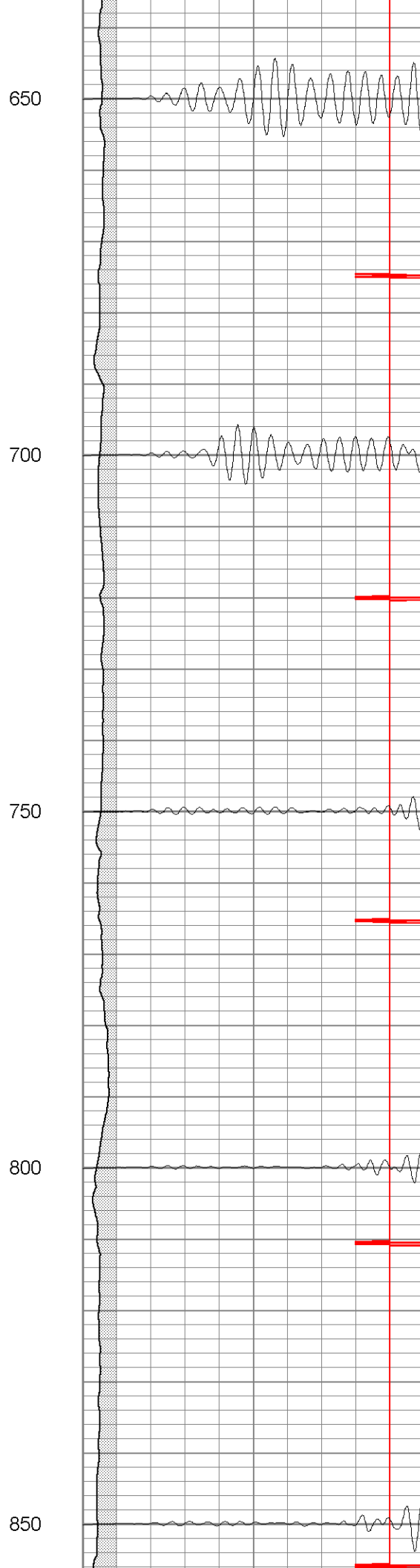
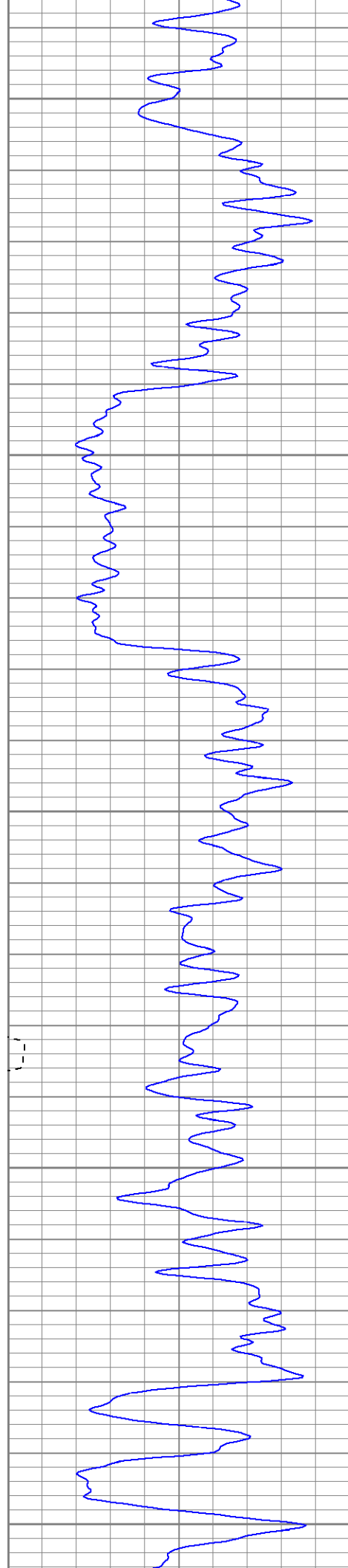
Database File: hr3606050508b.db
Dataset Pathname: pass3
Presentation Format: cblrt
Dataset Creation: Mon May 05 12:22:12 2008 by Log Open-Cased 070814
Charted by: Depth in Feet scaled 1:240

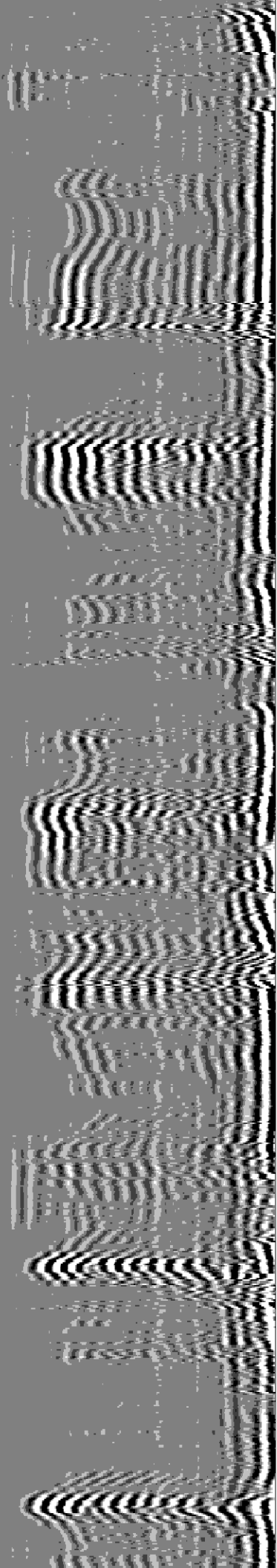
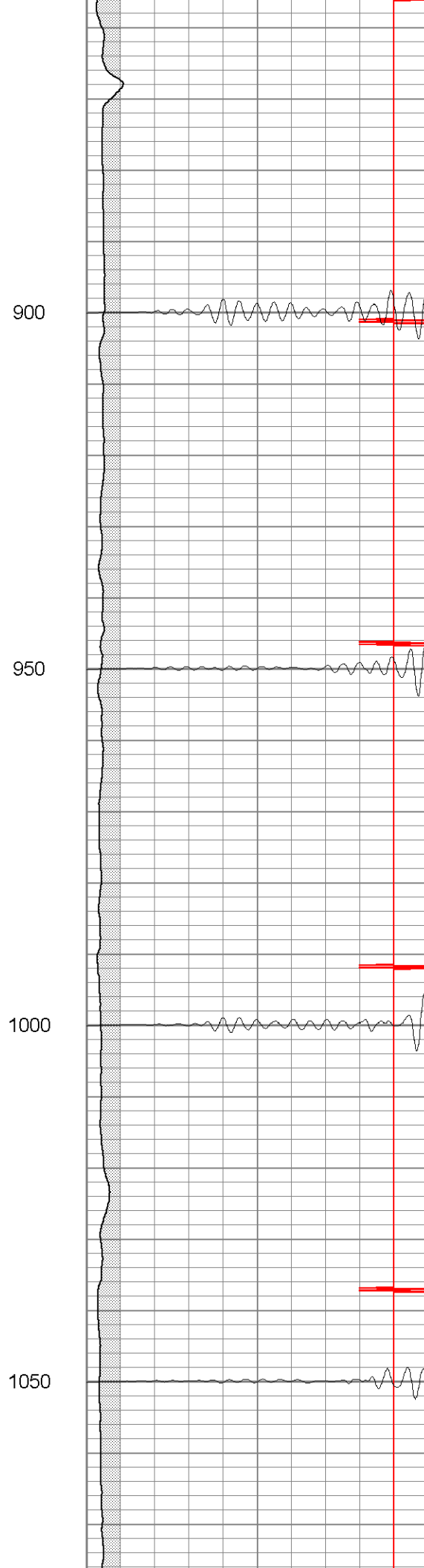
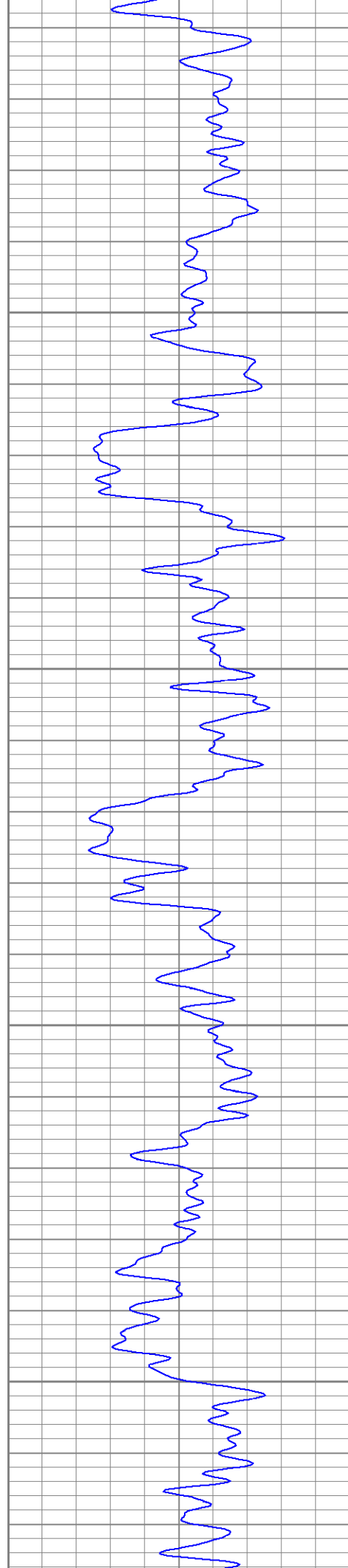
0	GR (GAPI)	200	0	AMP3 (mV)	100	200	Variable Density	1200
400	TT3 (usec)	200	18	CCL	-2			
			200	CBL5	1200			

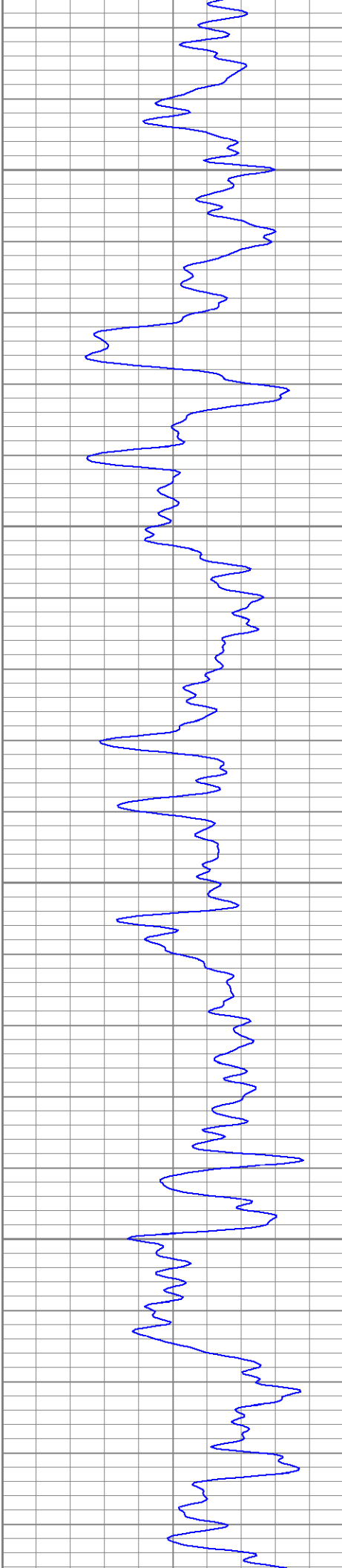










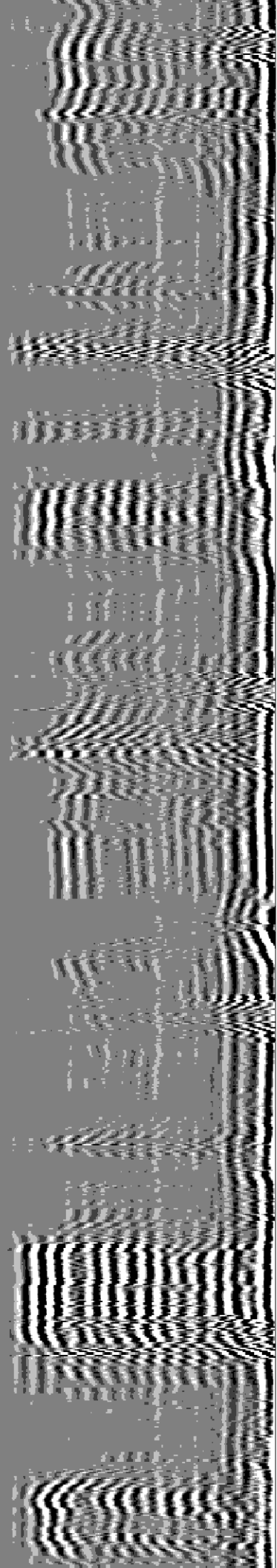
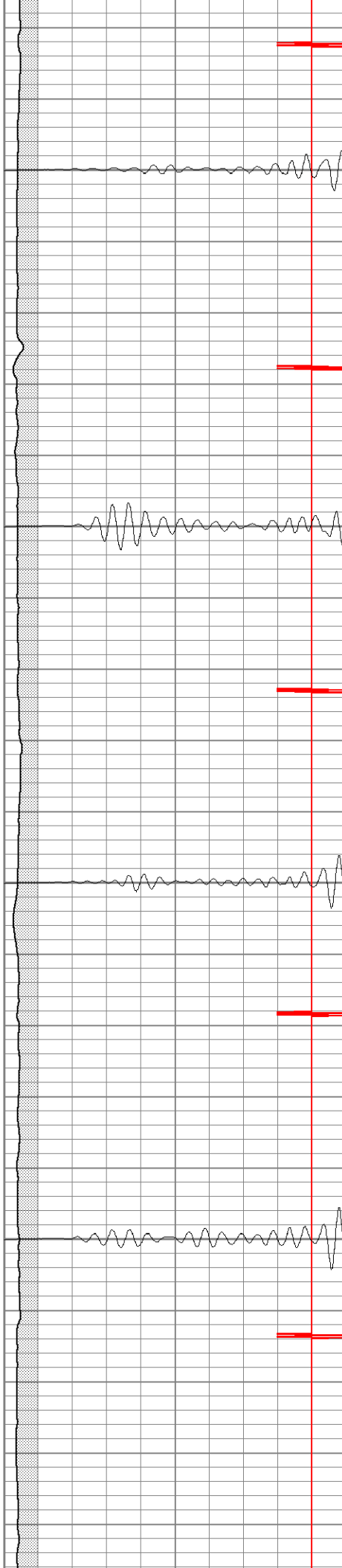


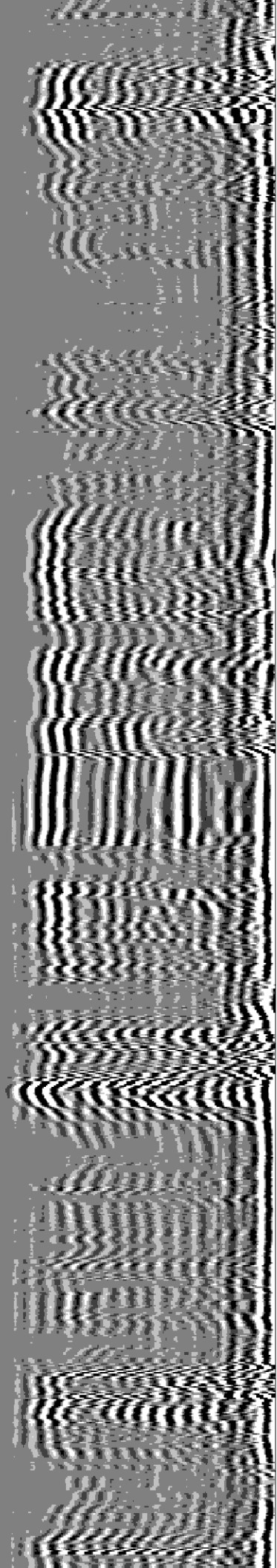
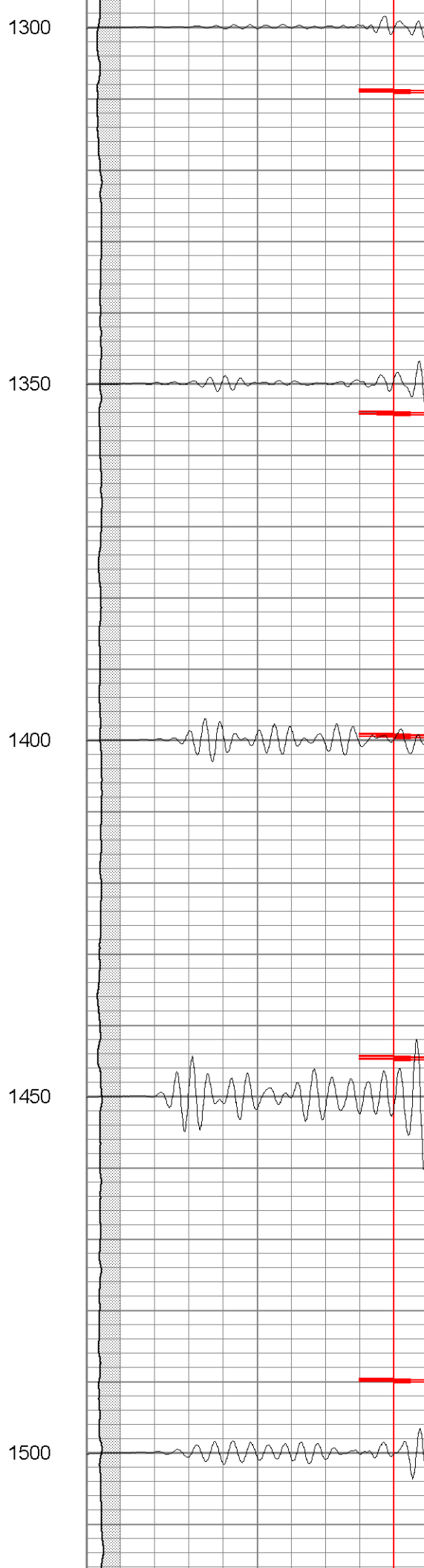
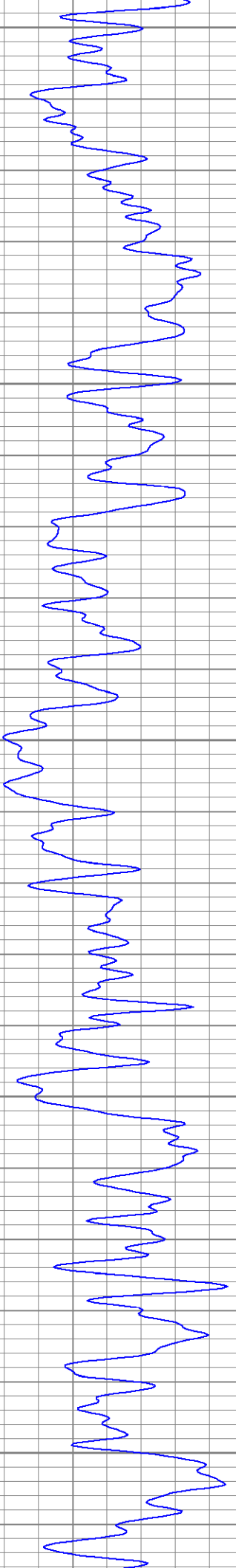
1100

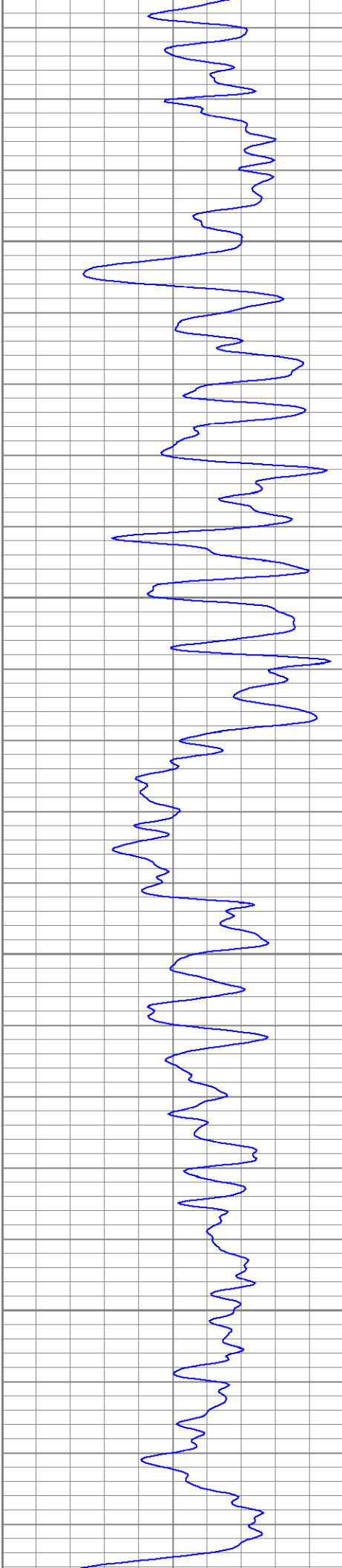
1150

1200

1250





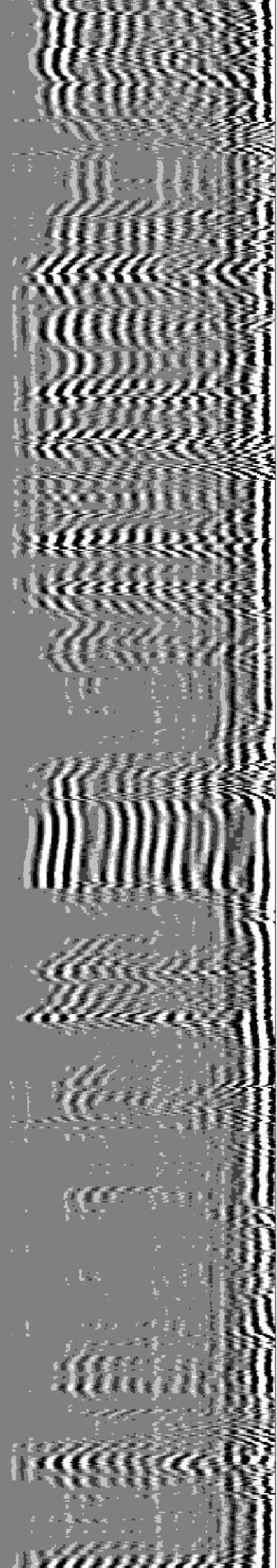


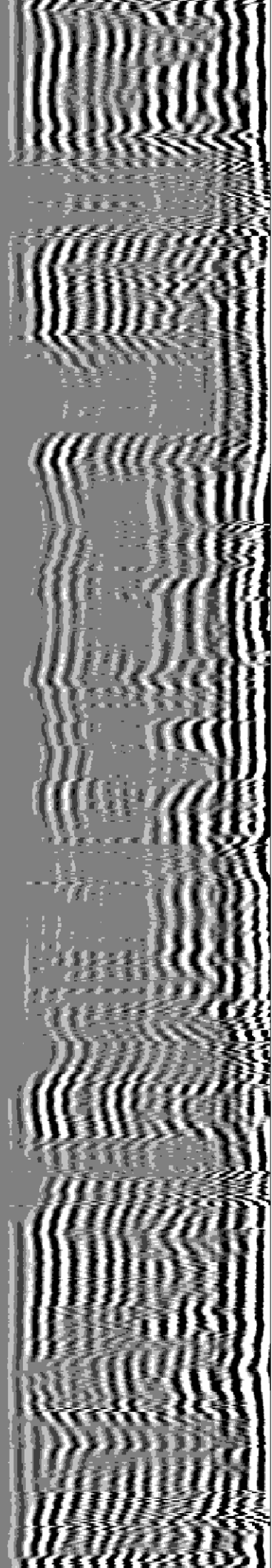
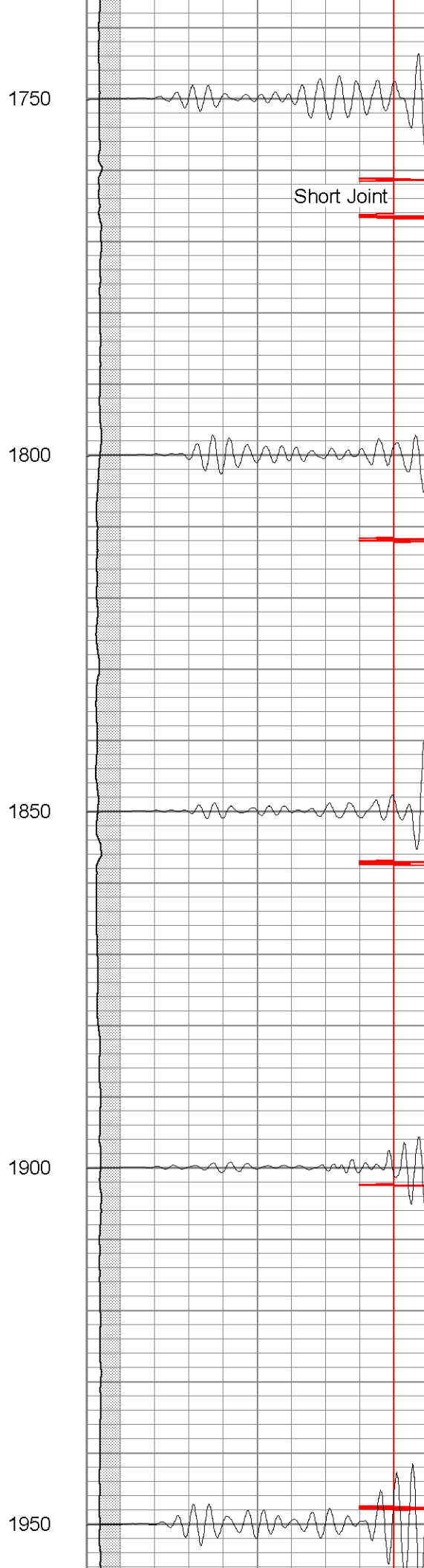
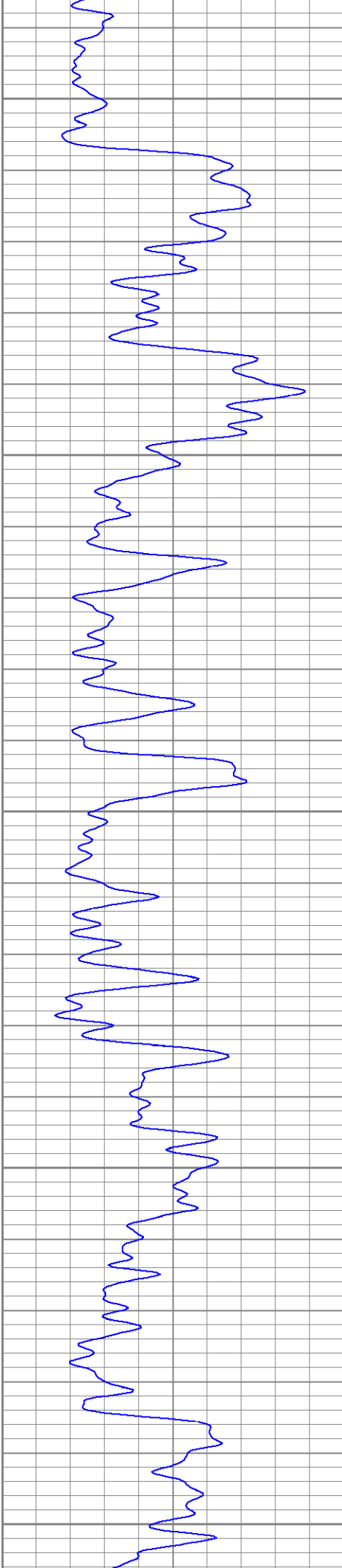
1550

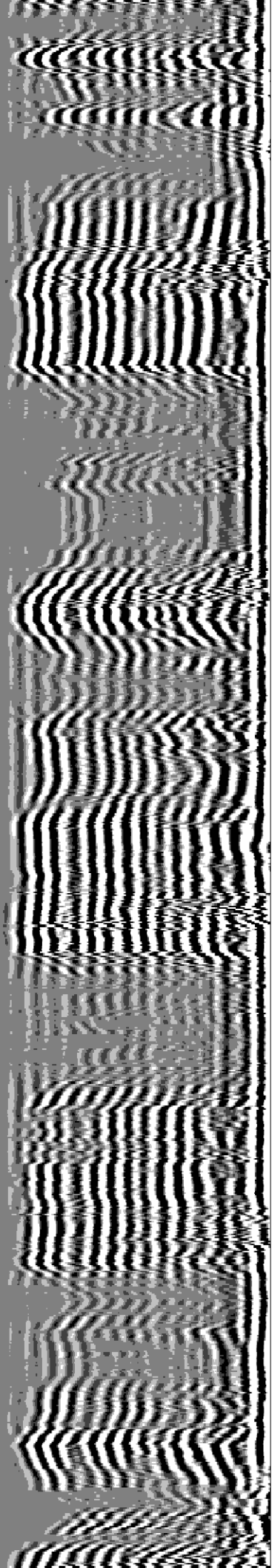
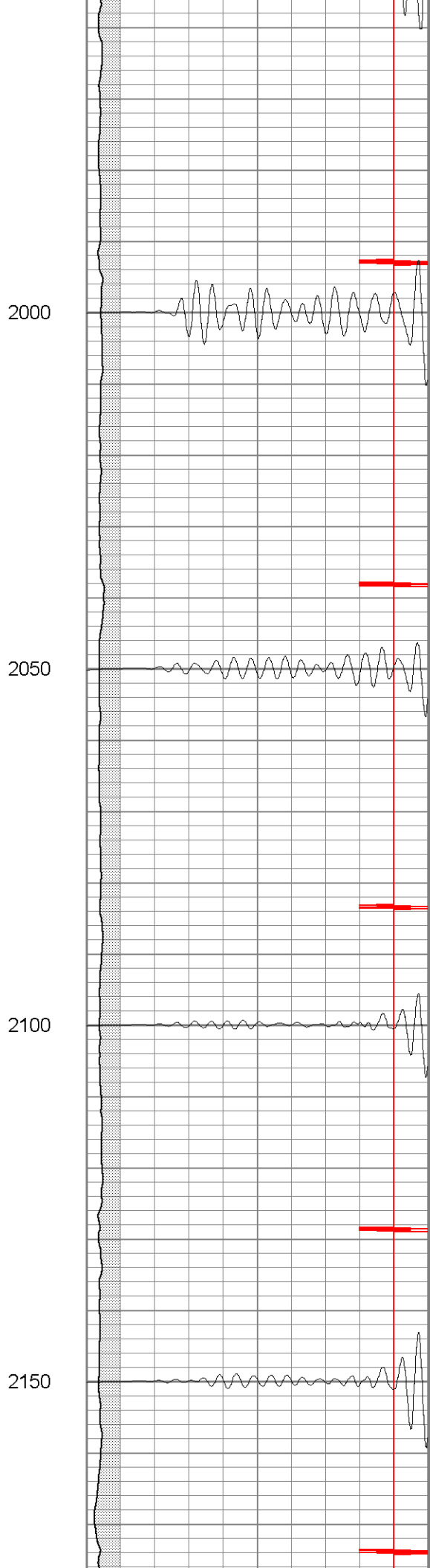
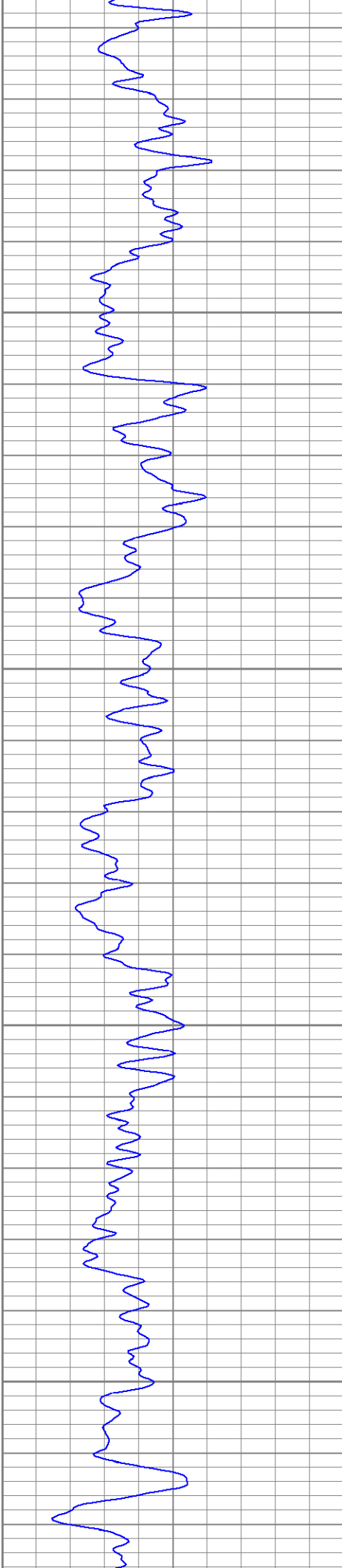
1600

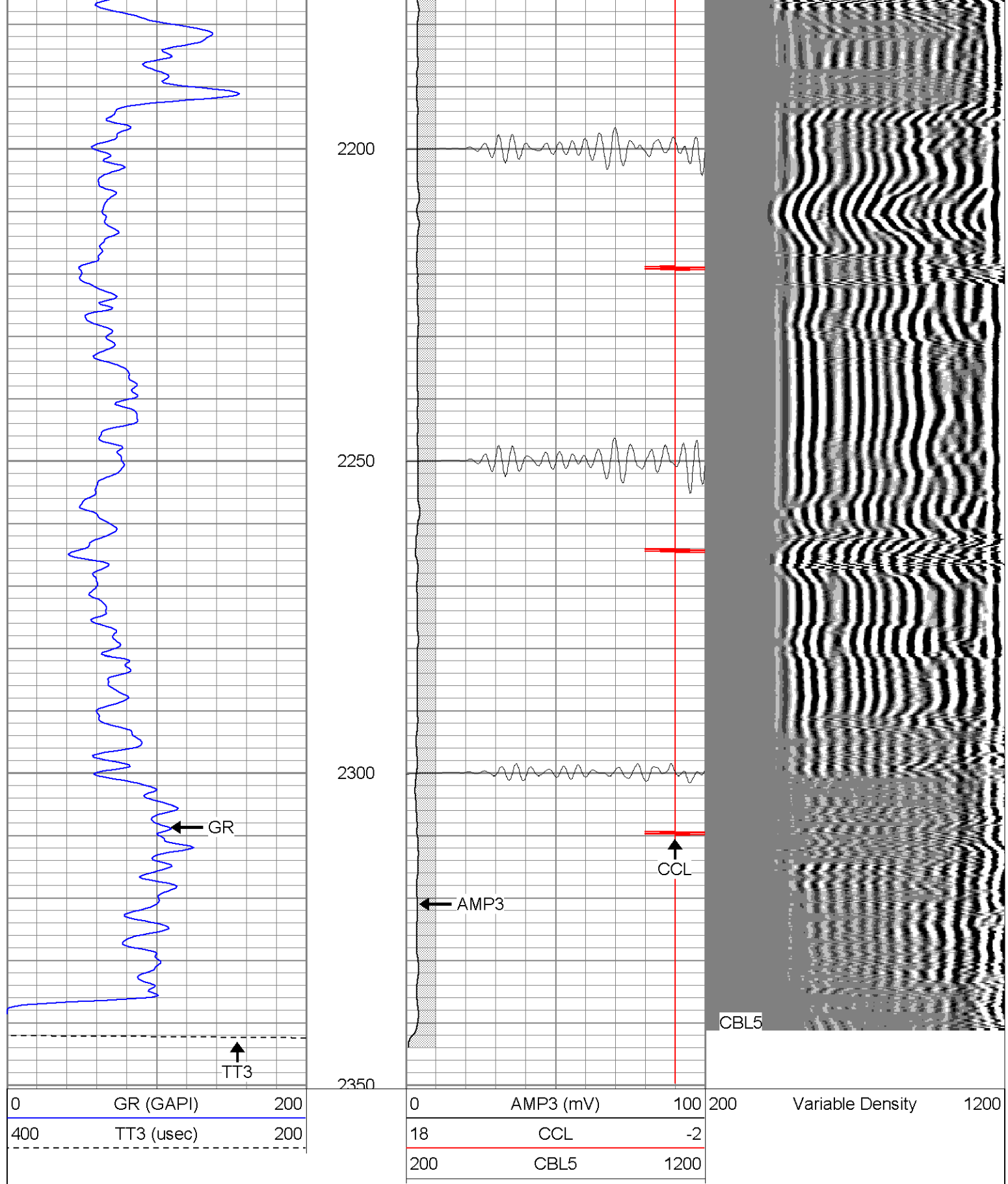
1650

1700





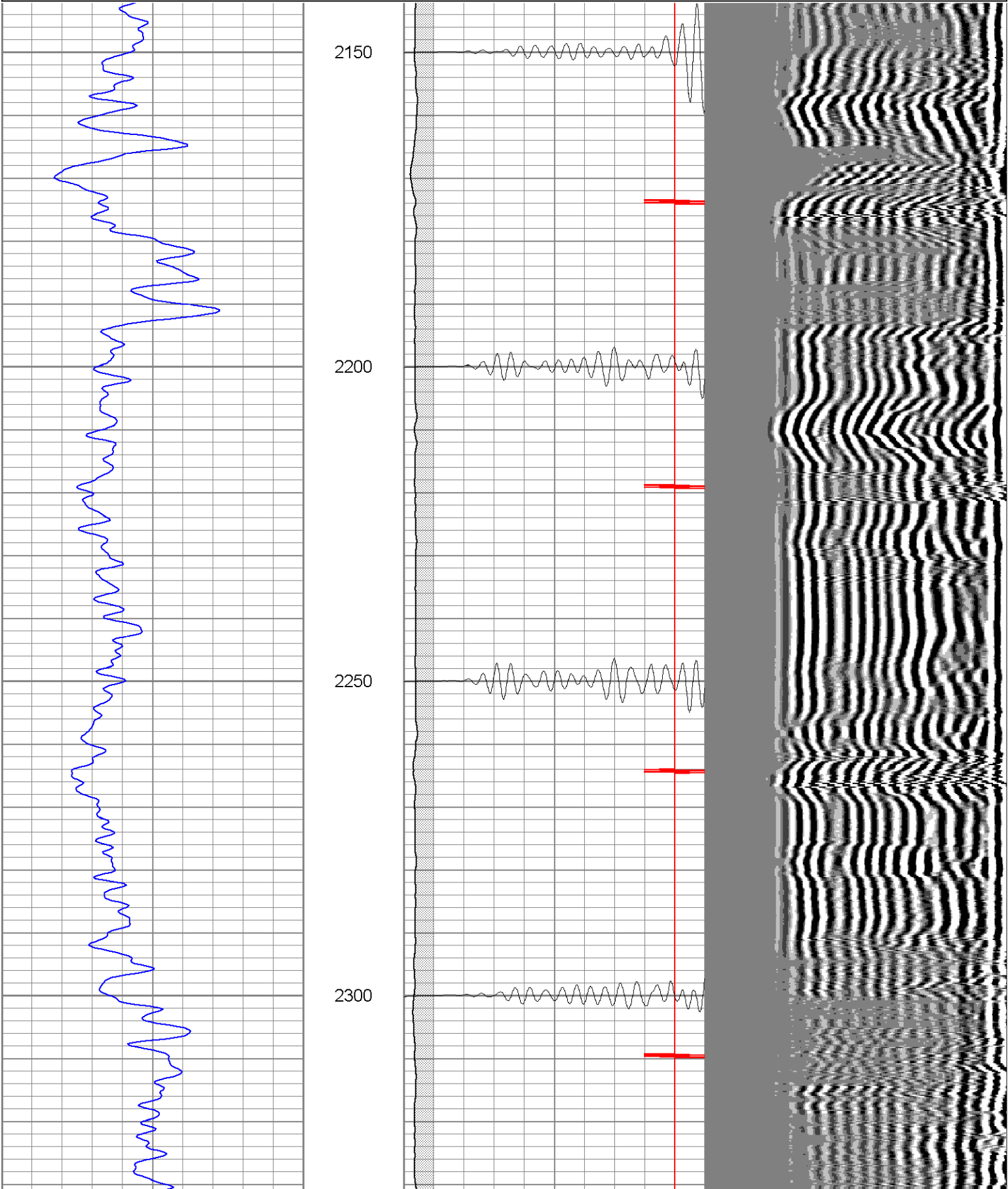


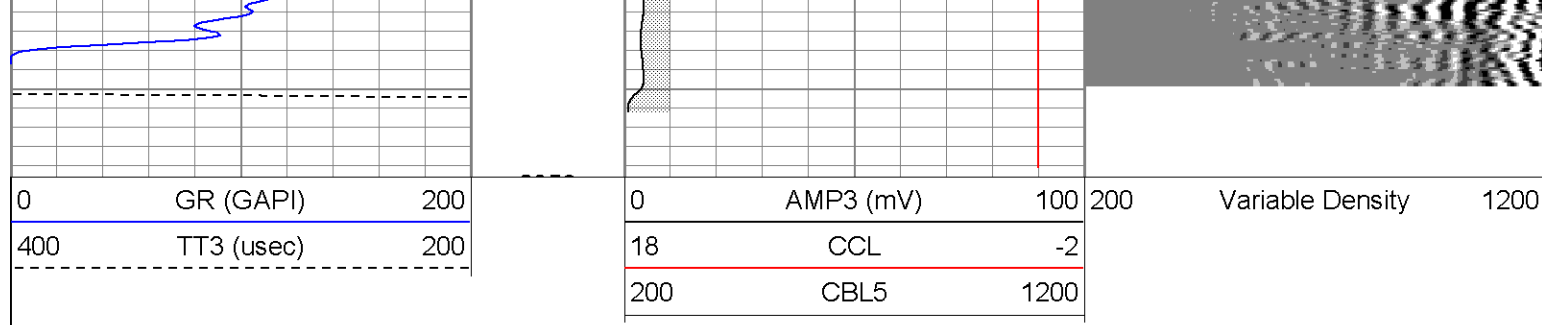


SUPERIOR
 Black Lick, Pa.
 Mercer, Pa.
 Wooster, Oh.
 Cleveland, Ok.
 Trinidad, Co.

Repeat Section

0	GR (GAPI)	200	0	AMP3 (mV)	100	200	Variable Density	1200
400	TT3 (usec)	200	18	CCL	-2			
			200	CBL5	1200			





Calibration Report

Database File: hr3606050508b.db
 Dataset Pathname: pass1
 Dataset Creation: Mon May 05 12:01:43 2008 by Log Open-Cased 070814

Cement Bond Log Calibration Report

Serial Number: Titan6
 Tool Model: T6
 Performed: Wed Apr 09 10:50:38 2008

Depth: 1272.56 ft
 Casing Diameter: 5.5 in

3' Spacing 5' Spacing

Signal Zero: 0 0 mV
 Calibrated Amplitude: 85 85 mV
 Reading at Signal Zero: 0.0158203 0.0169922 V
 Reading in Free Pipe: 1.62 1.63 V

Gain: 52.9866 52.6966
 Offset: 1 0

Gamma Ray Calibration Report

Serial Number: Titan6
 Tool Model: T6
 Performed: Tue Apr 08 13:01:44 2008

Calibrator Value: 0.0 GAPI

Background Reading: 1.0 cps
 Calibrator Reading: 0.0 cps

Sensitivity: 1.1000 GAPI/cps

Sensor	Offset (ft)	Schematic	Description	Len (ft)	OD (in)	Wt (lb)
GR	13.64		CHD-None (0)	0.75	1.50	5.00
			GR-T6 (Titan6)	2.52	2.25	25.00
WVF5	9.49		CBL-T6 (Titan6)	7.23	2.25	110.00
WVF3	8.49					

