

Patterson

**DUAL
INDUCTION
LOG**

Company XTO Energy Inc.		Company XTO Energy Inc.	
Well Golden Eagle 19-11		Well Golden Eagle 19-11	
Field Purgatoire River		Field Purgatoire River	
County Las Animas		County Las Animas	
State Colorado		State Colorado	
Location: API # : 05 071 08696 00		Other Services cdl neutron	
SEC 19 TWP 33S RGE 67W		Elevation	
Permanent Datum	Ground Level	Elevation	7236'
Log Measured From	Ground Level	K.B. -----	
Drilling Measured From	Ground Level	D.F. -----	
		G.L. 7236'	
Date	03-08-06		
Run Number	Two		
Depth Driller	1950'		
Depth Logger	1946'		
Bottom Logged Interval	1944'		
Top Log Interval	Surface Casing		
Casing Driller	8 5/8" @ 319'		
Casing Logger	319'		
Bit Size	7 7/8"		
Type Fluid in Hole	Water		
Density / Viscosity	///		
pH / Fluid Loss	///		
Source of Sample	///		
Rm @ Meas. Temp	///		
Rmf @ Meas. Temp	///		
Rmc @ Meas. Temp	///		
Source of Rmf / Rmc	///		
Rm @ BHT	///		
Time Circulation Stopped	7:00 p.m.		
Time Logger on Bottom	9:00 p.m.		
Maximum Recorded Temperature	109		
Equipment Number	T677		
Location	Trinidad		
Recorded By	L. Smith		
Witnessed By	Mr. Don Johnson		

>>> Fold Here >>>

All interpretations are opinions based on inferences from electrical or other measurements and we cannot and do not guarantee the accuracy or correctness of any interpretation, and we shall not, except in the case of gross or willful negligence on our part, be liable or responsible for any loss, costs, damages, or expenses incurred or sustained by anyone resulting from any interpretation made by any of our officers, agents or employees. These interpretations are also subject to our general terms and conditions set out in our current Price Schedule.

Comments

4 miles past Weston to Bosque entrance go.2 miles and turn right
on old rail track, go 1.5 miles and turn right to location.

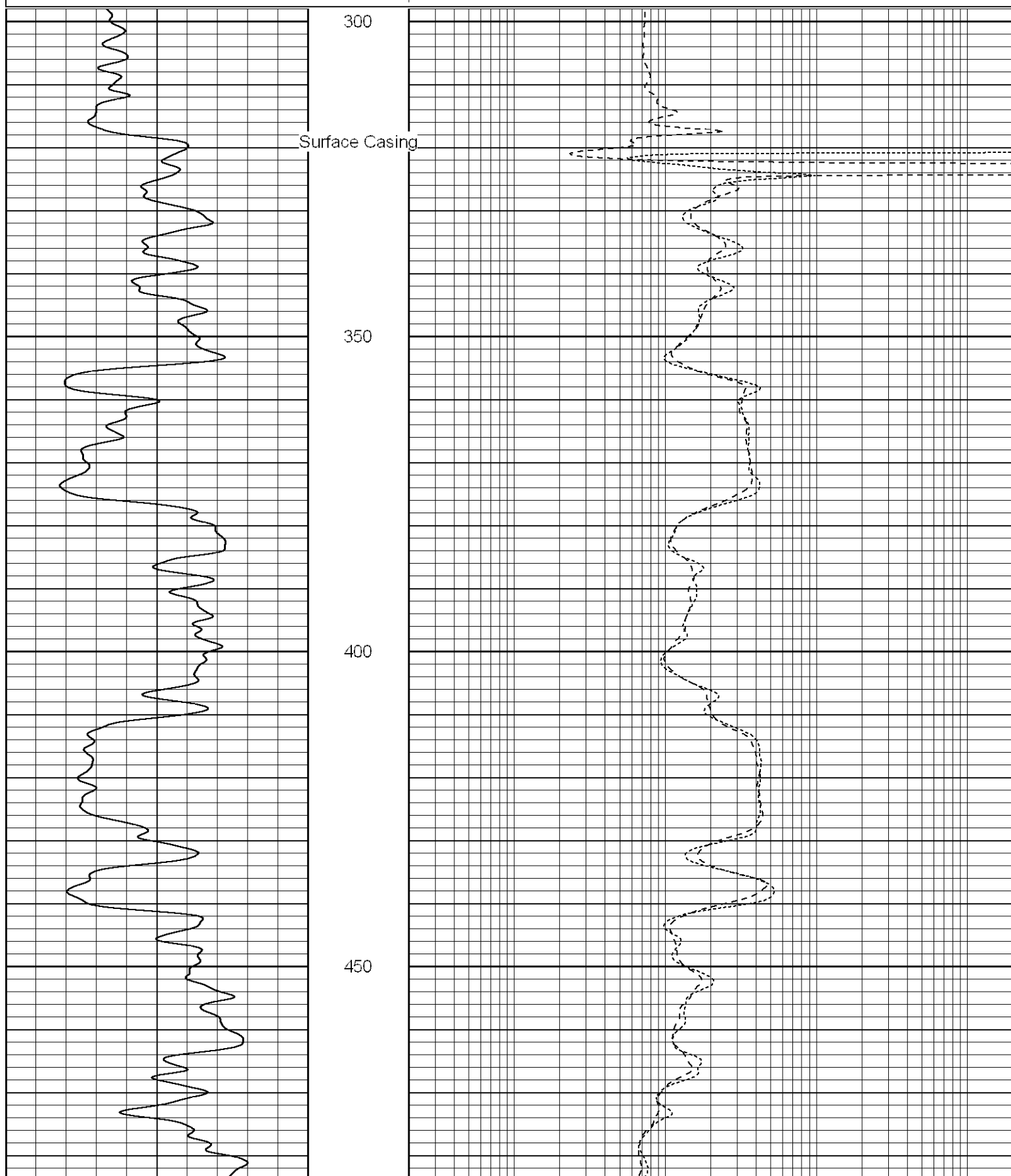
Patterson

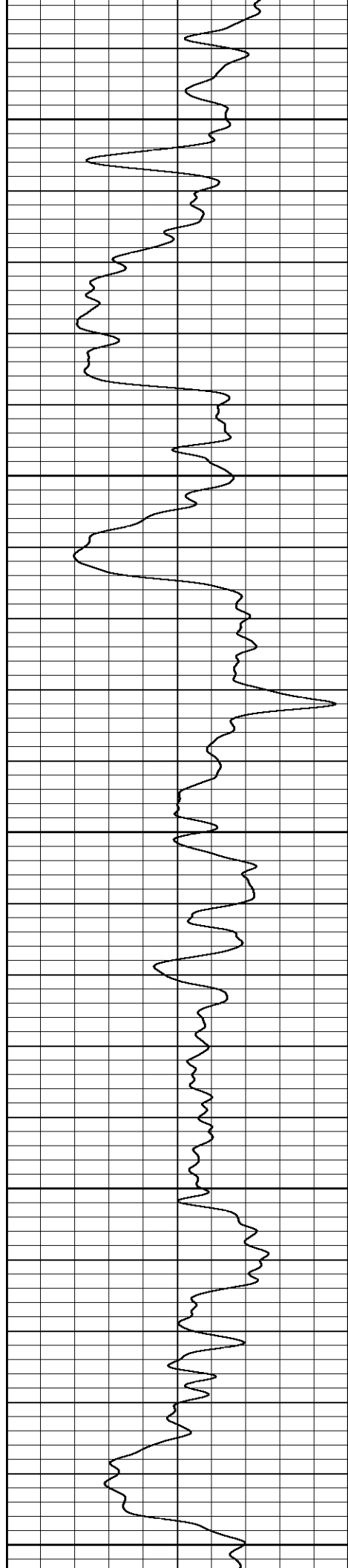
Main Pass

Database File: xtoge1911.db
Dataset Pathname: pass4.1
Presentation Format: dil
Dataset Creation: Wed Mar 08 23:33:01 2006 by Calc Warrior 7.0 STD Ope
Charted by: Depth in Feet scaled 1:240

0	GR (GAPI)	200
-200	SP (mV)	0

0.2	RILD (Ohm-m)	2000
0.2	RILM (Ohm-m)	2000
0.2	RLL3 (Ohm-m)	2000





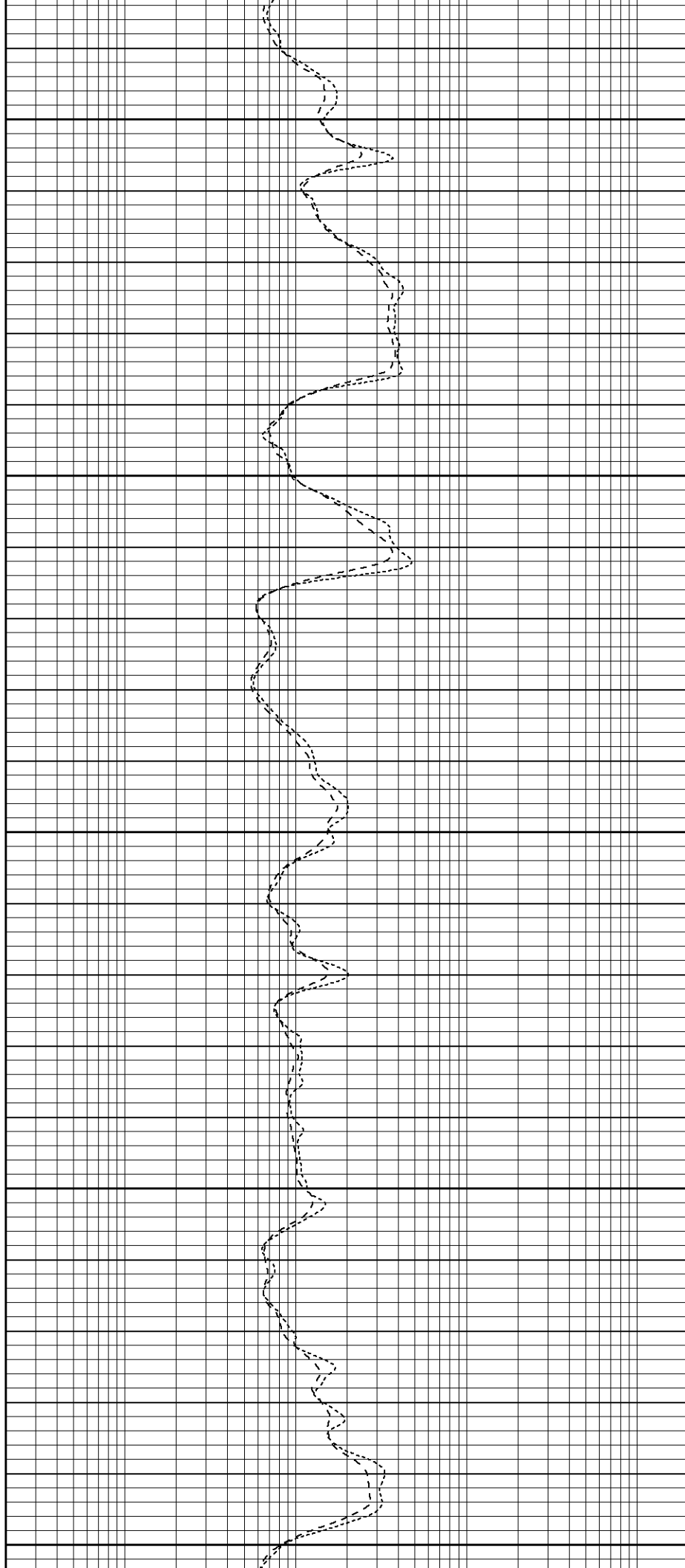
500

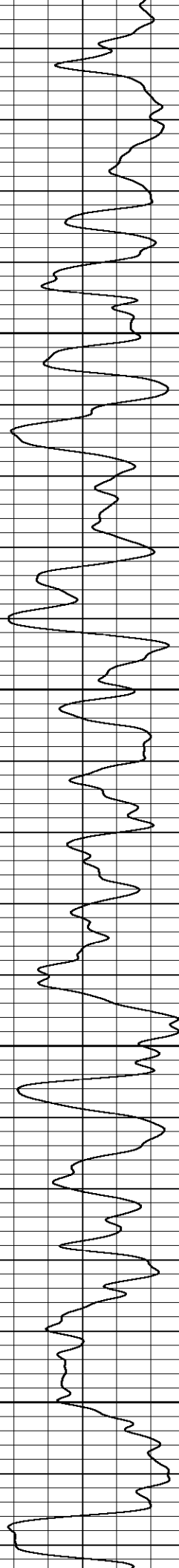
550

600

650

700



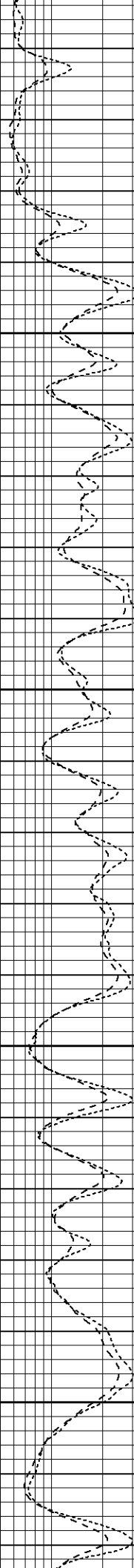


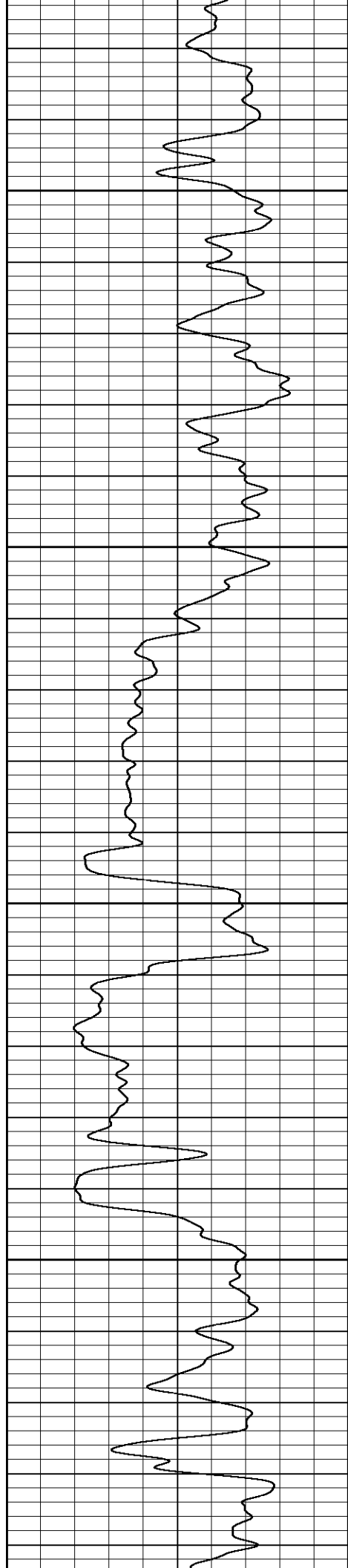
750

800

850

900



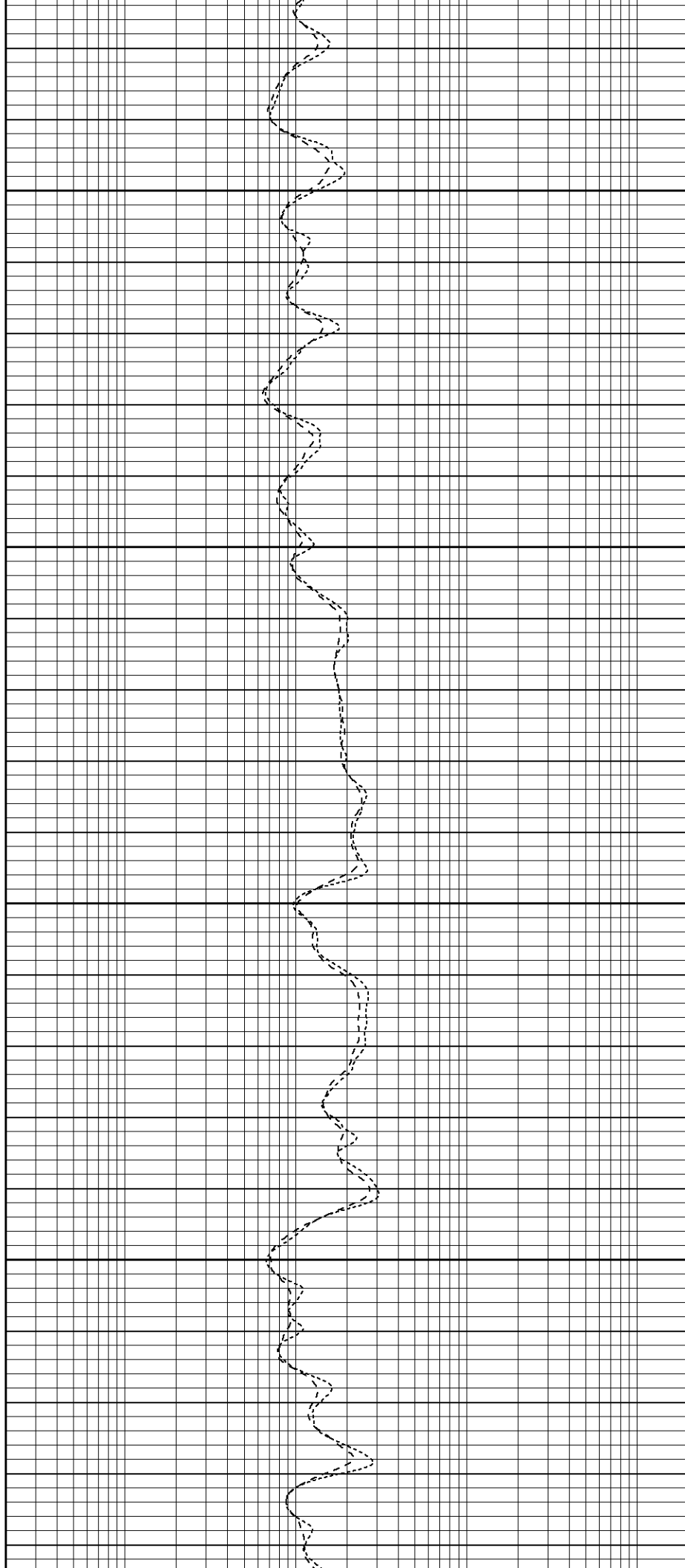


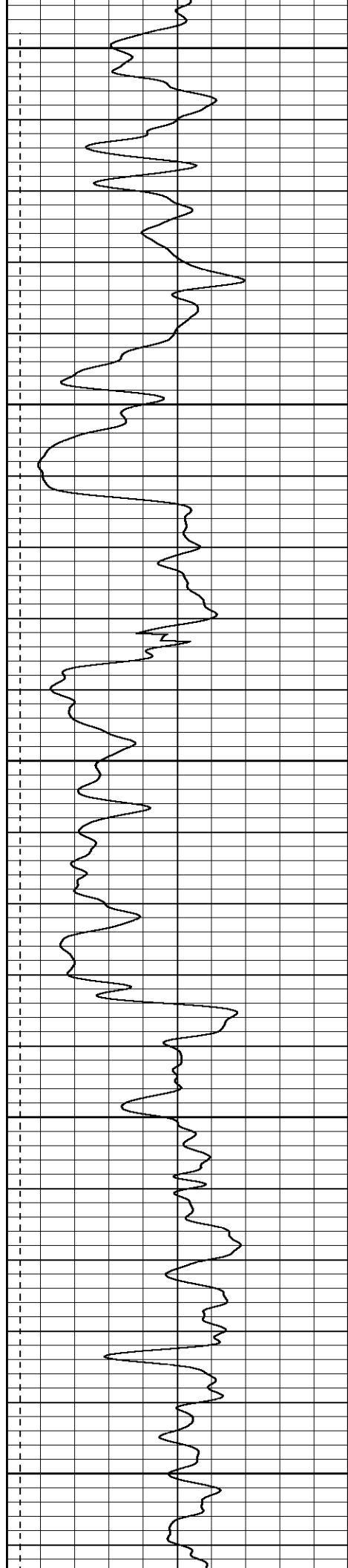
950

1000

1050

1100





1150

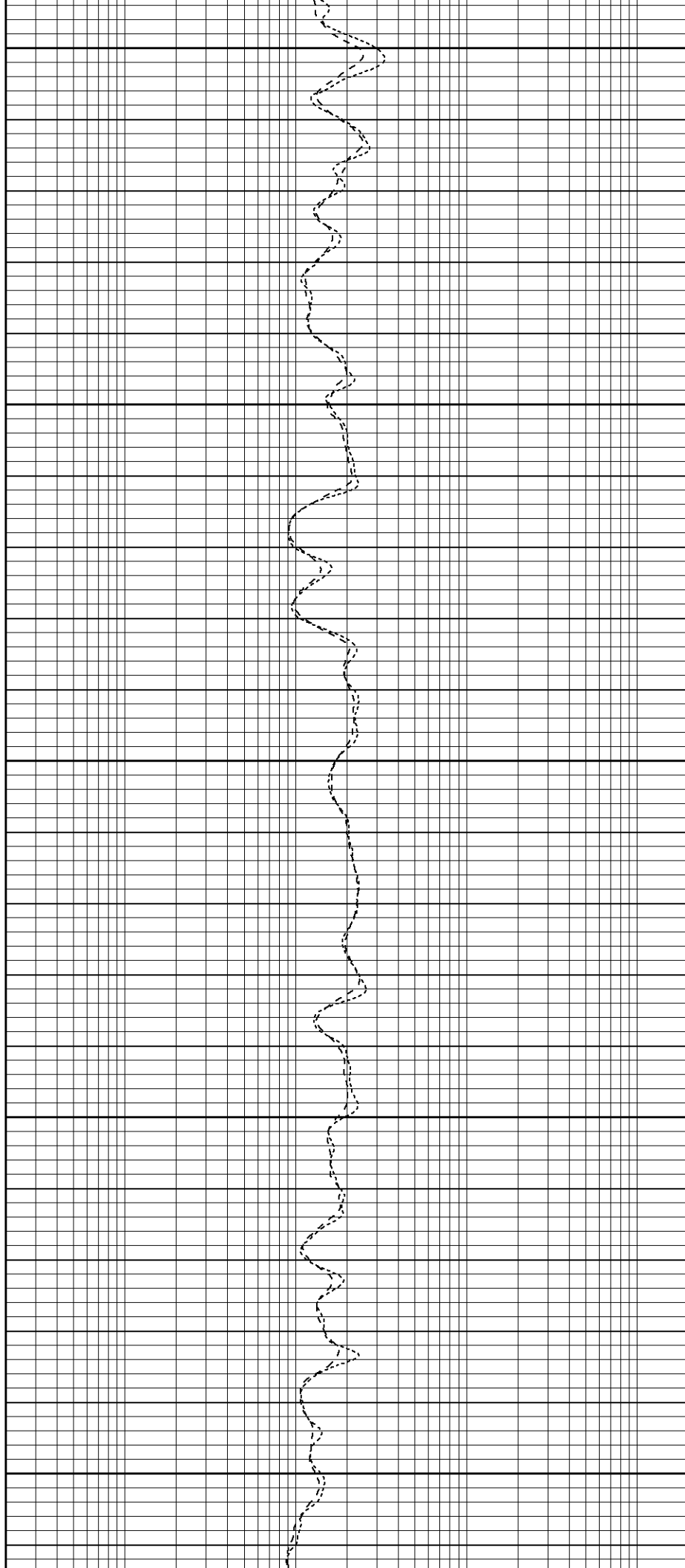
Air

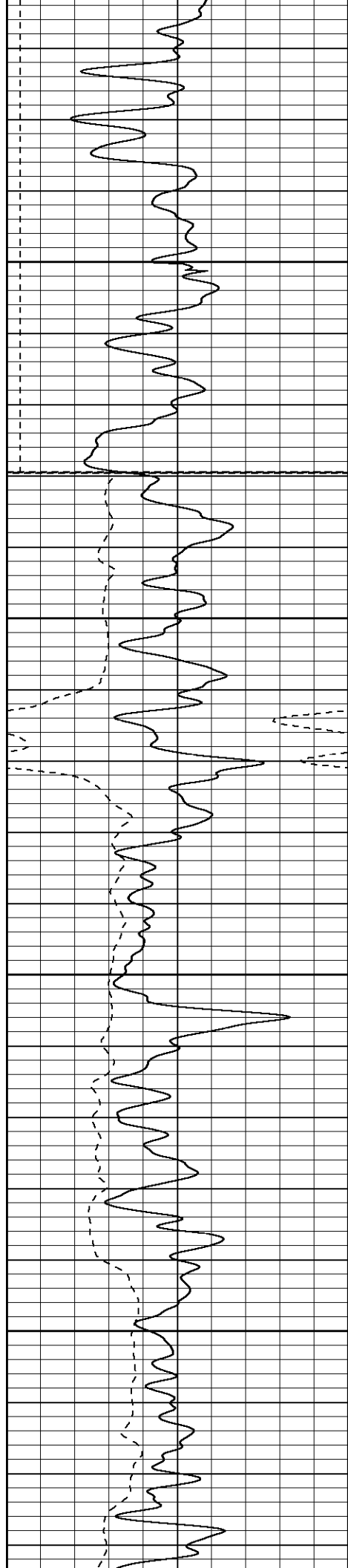
1200

1250

1300

1350





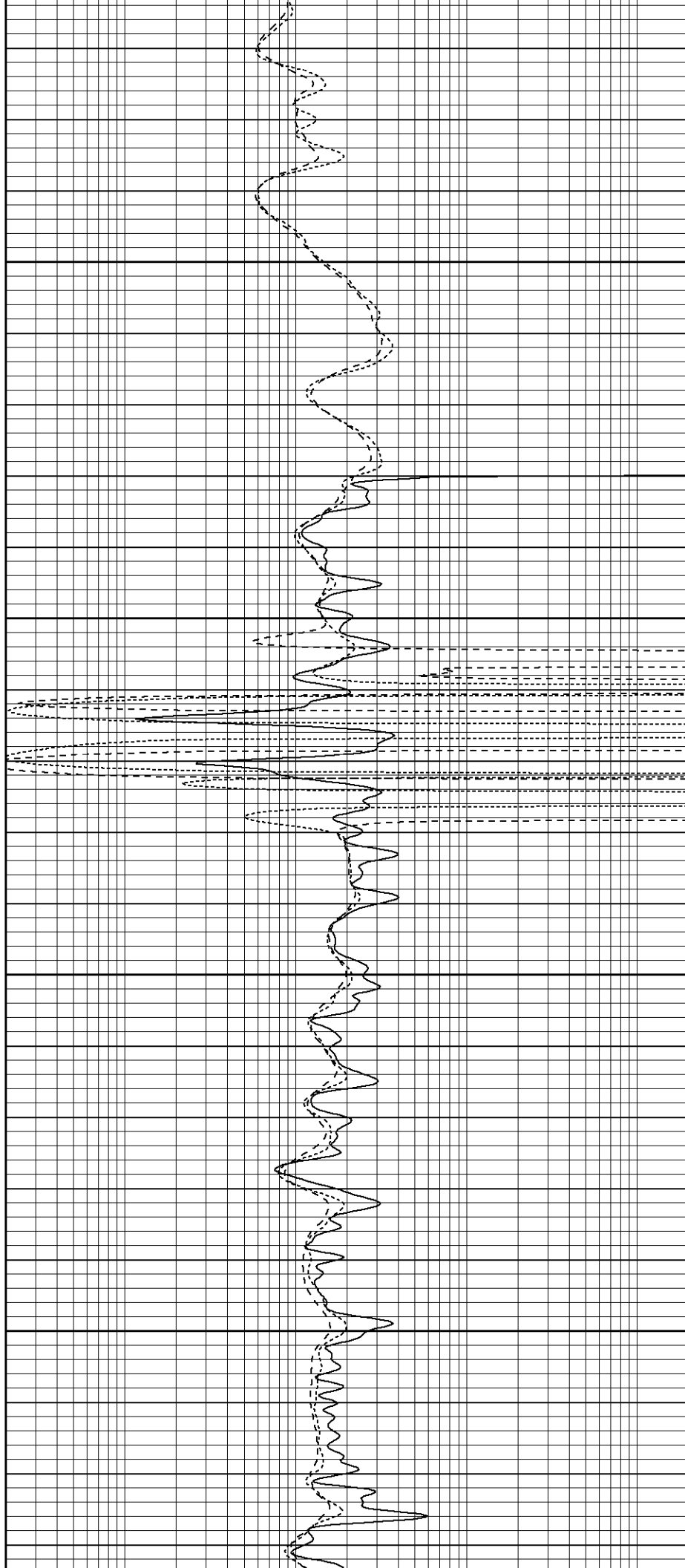
1400

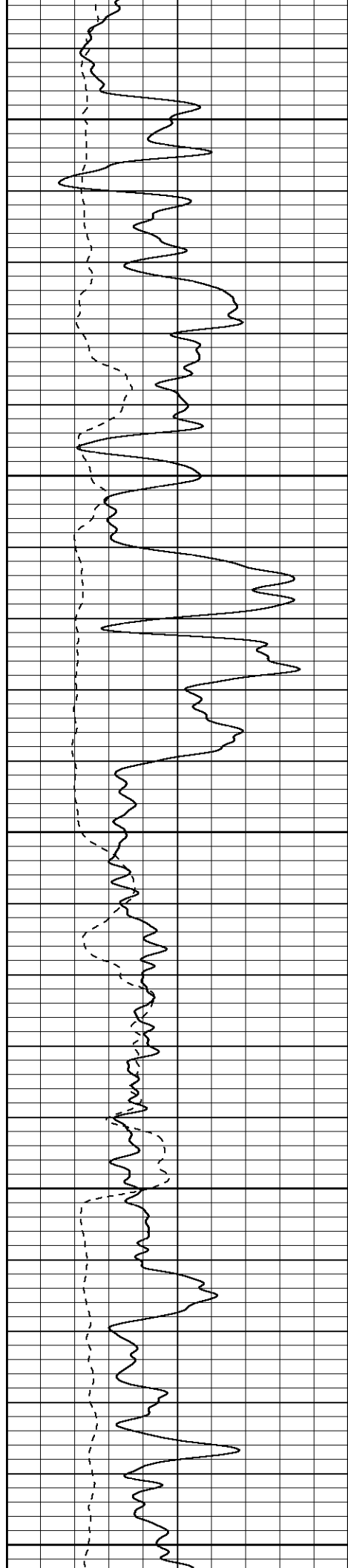
Foam

1450

1500

1550





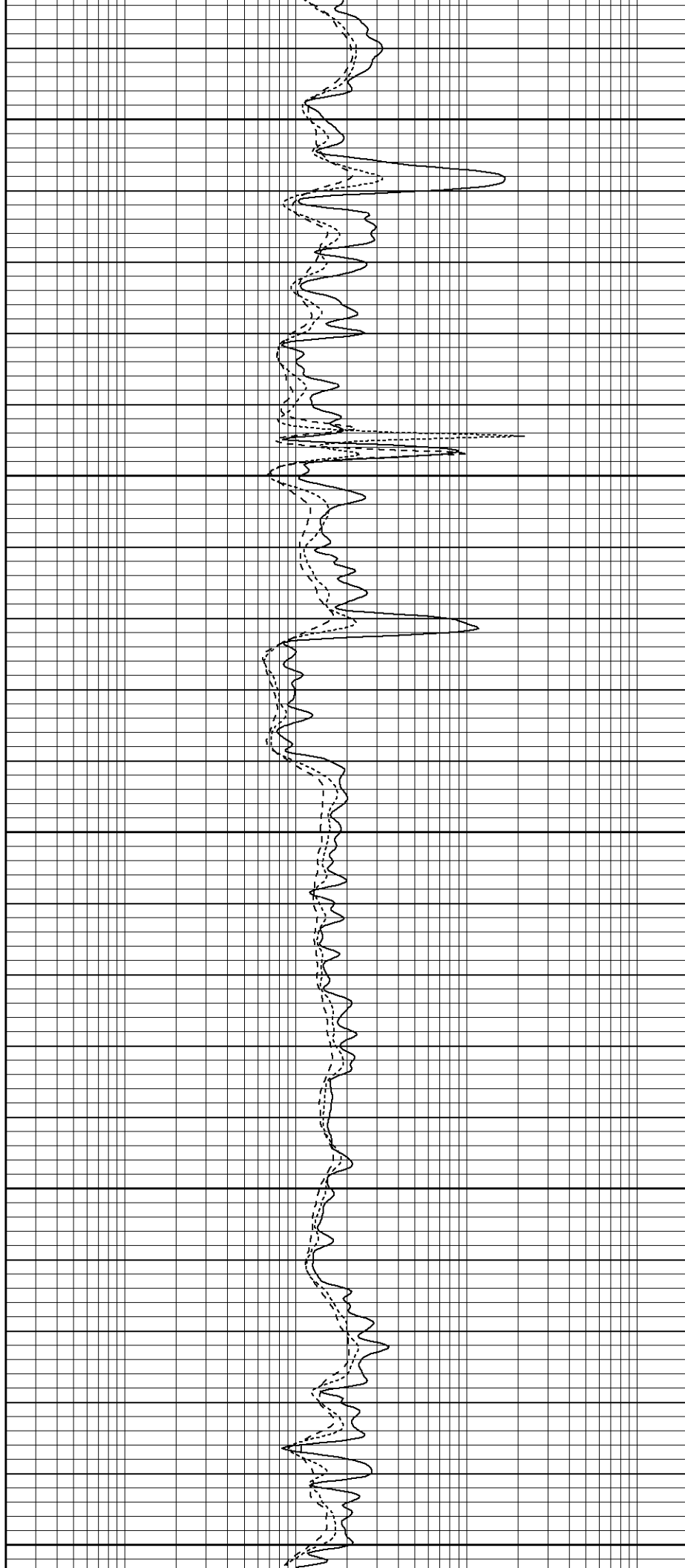
1600

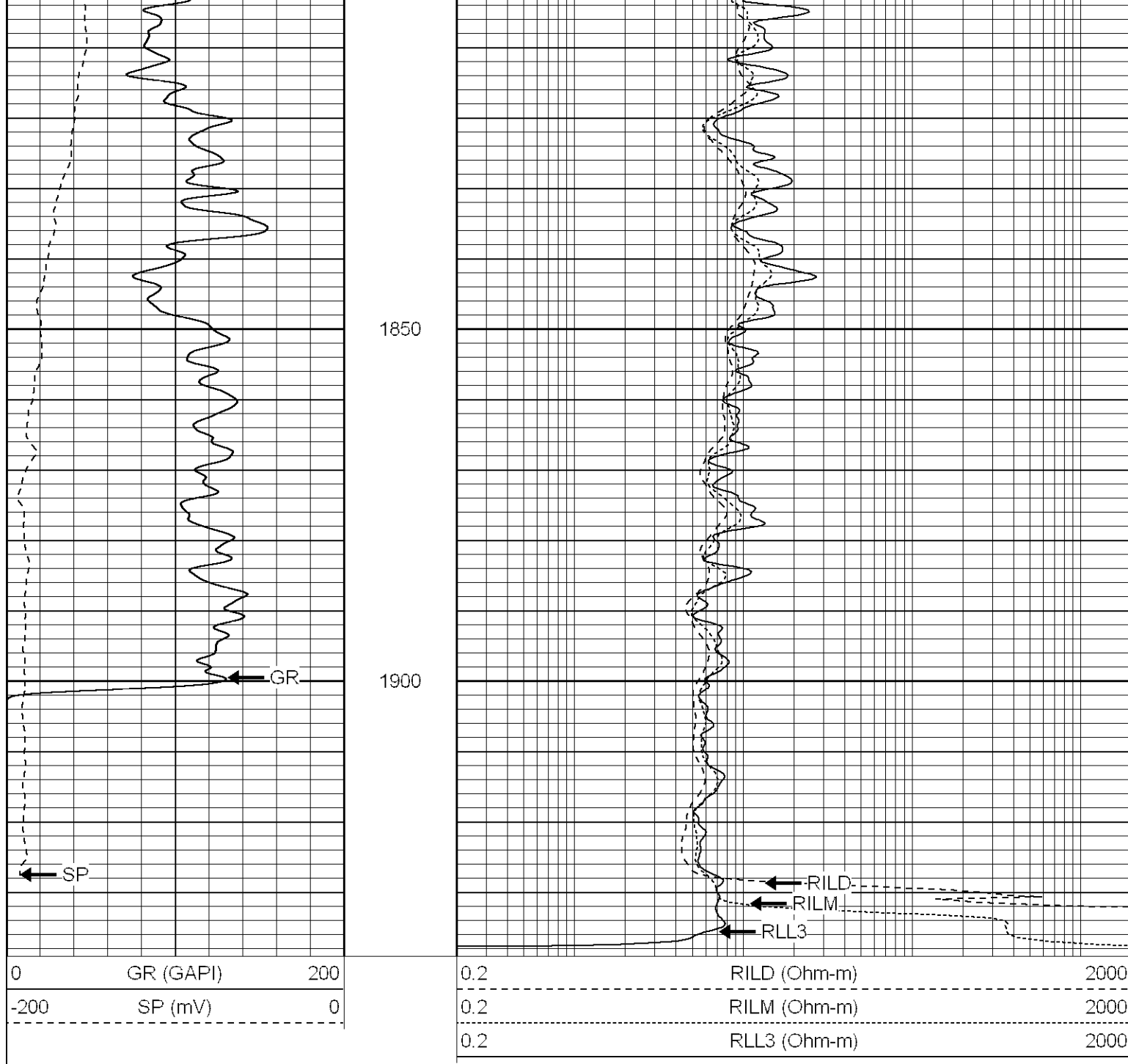
1650

1700

1750

1800



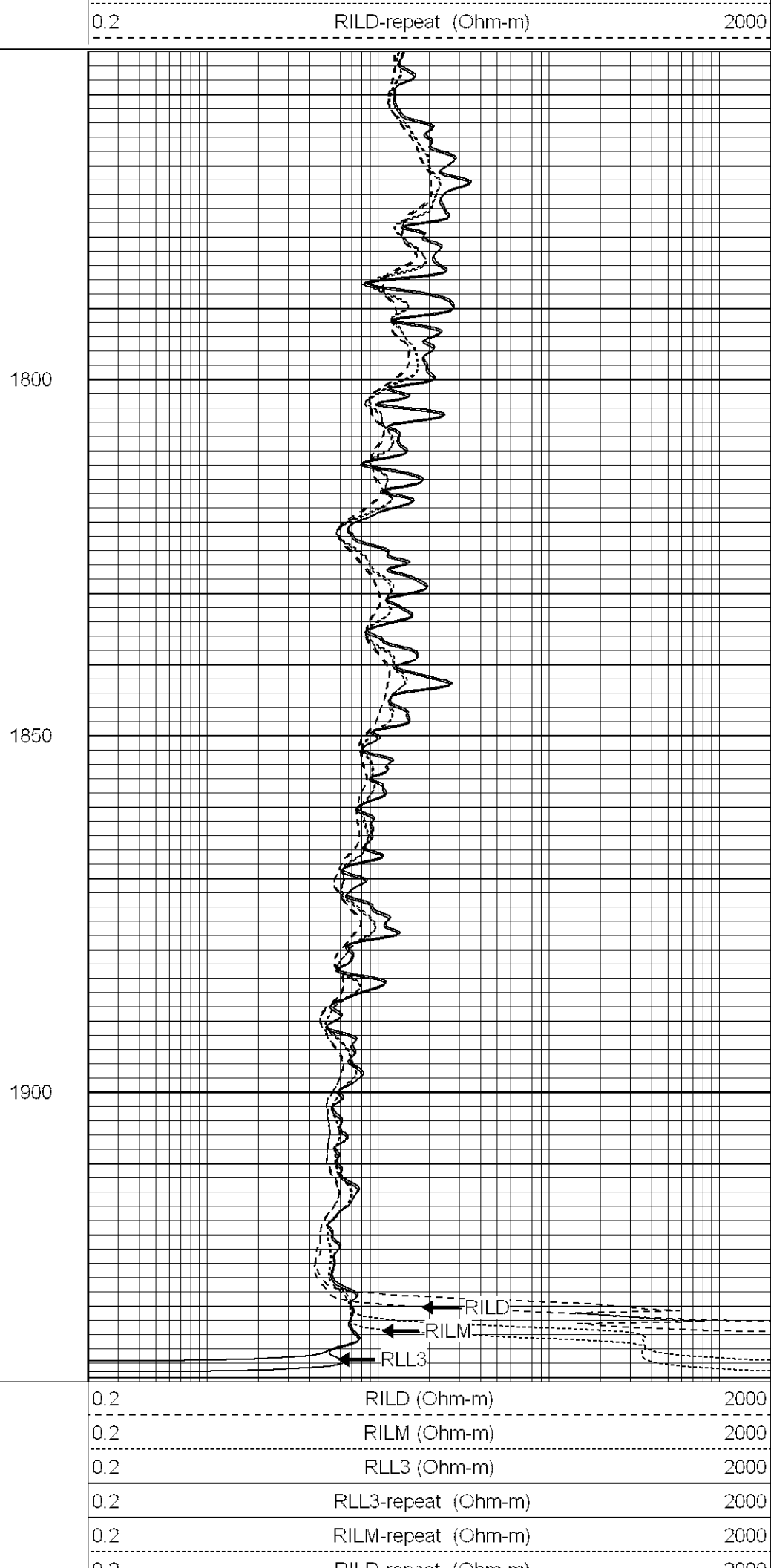
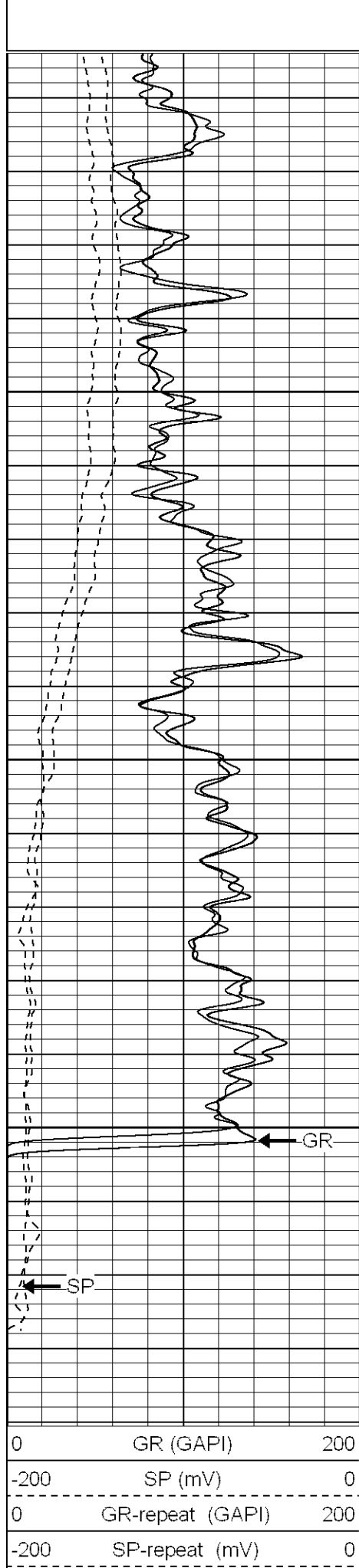


Patterson

Repeat Pass

Database File: xtoge1911.db
 Dataset Pathname: pass3.1
 Presentation Format: dil
 Dataset Creation: Wed Mar 08 22:18:23 2006 by Calc Warrior 7.0 STD Ope
 Charted by: Depth in Feet scaled 1:240

0	GR (GAPI)	200	0.2	RILD (Ohm-m)	2000
-200	SP (mV)	0	0.2	RILM (Ohm-m)	2000
0	GR-repeat (GAPI)	200	0.2	RLL3 (Ohm-m)	2000
-200	SP-repeat (mV)	0	0.2	RLL3-repeat (Ohm-m)	2000
			0.2	RILM-repeat (Ohm-m)	2000



Dual Induction Calibration Report							
Serial-Model:		5375-G					
Surface Cal Performed:		Mon Mar 06 14:14:03 2006					
Downhole Cal Performed:		Wed Mar 08 20:15:55 2006					
Compensated Density Calibration Report							
Serial-Model:		902-2.75POH					
Source / Verifier:		/					
Master Calibration Performed:		Mon Mar 06 14:12:48 2006					
Master Calibration							
	Density			Far Detector		Near Detector	
Magnesium	1.710	g/cc		937.76	456.53	cps	
Aluminum	2.590	g/cc		165.85	225.46	cps	
Spine Angle = 67.84			Density/Spine Ratio = 0.470				
	Size			Reading			
Small Ring	8.65	in		2.31	V		
Large Ring	17.00	in		4.47	V		
Neutron Calibration Report							
Serial Number:		802					
Tool Model:		2.75POH					
Performed:		Mon Feb 27 09:32:04 2006					
Calibrator Value:		1	NAPI				
Calibrator Reading:		1	cps				
Sensitivity:		1	NAPI/cps				
Gamma Ray Calibration Report							
Serial Number:		804					
Tool Model:		2.75POH					
Performed:		Tue Feb 28 13:45:51 2006					
Calibrator Value:		1.0	GAPI				
Background Reading:		0.0	cps				
Calibrator Reading:		1.0	cps				
Sensitivity:		0.8000	GAPI/cps				

Sensor	Offset (ft)	Schematic	Description	Len (ft)	OD (in)	Wt (lb)
--------	-------------	-----------	-------------	----------	---------	---------