

# BLANCO

Geological Services LLC

Scale 1:240 (5"=100') Imperial

Well Name: Rollerball 34-30  
Location: SW/SE Sec. 30 T32S R65W  
Licence Number: 05-071-08581-00  
Spud Date: 02/13/06  
Surface Coordinates: 893' FSL 2408' FEL

Region: Purgatoire River  
Drilling Completed: 02/14/06

## Bottom Hole Coordinates:

Ground Elevation (ft): 7148' K.B. Elevation (ft): 7152'  
Logged Interval (ft): 625' To: 1690' Total Depth (ft): 1690'  
Formation: Raton / Vermejo / Trinidad / Pierre  
Type of Drilling Fluid: Aerated Water

Printed by STRIP.LOG from WellSight Systems 1-800-447-1534 [www.WellSight.com](http://www.WellSight.com)

## OPERATOR

Company: Pioneer Natural Resources USA, Inc.  
Address: 1401 17th Street Suite 1200  
Denver CO 80202

## GEOLOGIST

Name: Kyle Welty / JoaQuin Gonzalez / Rolando Maldoando  
Company: BLANCO Geological Services LLC  
Address: P.O. Box 865  
Trinidad CO 81020  
(719) 846-3364

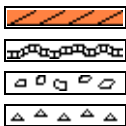
## Rig

PWS #33

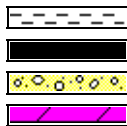
## Comments

8 5/8" #24 Surface Casing set to 607.31'

## ROCK TYPES



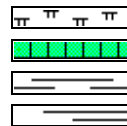
Anhy  
Bent  
Brec  
Cht



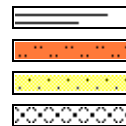
Clyst  
Coal  
Congl  
Dol



Gyp  
Igne  
Lmst  
Meta



Mrlst  
Salt  
Shale  
Shcol



Shgy  
Sltst  
Ss  
Till

## ACCESSORIES

### MINERAL

Anhy  
 Arggrn  
 Arg  
 Bent  
 Bit  
 Breccfrag  
 Calc  
 Carb  
 Chtdk  
 Chtlit  
 Dol  
 Feldspar  
 Ferrpel  
 Ferr  
 Glau

Gyp  
 Hvymin  
 Kaol  
 Marl  
 Minxl  
 Nodule  
 Phos  
 Pyr  
 Salt  
 Sandy  
 Silt  
 Sil  
 Sulphur  
 Tuff

### FOSSIL

Algae  
 Amph  
 Belm  
 Bioclst  
 Brach  
 Bryozoa  
 Cephal  
 Coral  
 Crin  
 Echin  
 Fish  
 Foram  
 Fossil  
 Gastro  
 Oolite

Ostra  
 Pelec  
 Pellet  
 Pisolite  
 Plant  
 Strom

### STRINGER

Anhy  
 Arg  
 Bent  
 Coal  
 Dol  
 Gyp  
 Ls  
 Mrst

Siltstrg  
 Ssstrg

### TEXTURE

Boundst  
 Chalky  
 Cryxln  
 Earthy  
 Finexln  
 Grainst  
 Lithogr  
 Microxln  
 Mudst  
 Packst  
 Wackest

## OTHER SYMBOLS

### POROSITY TYPE

Earthy  
 Fenest  
 Fracture  
 Inter  
 Moldic  
 Organic  
 Pinpoint

Vuggy

### SORTING

Well  
 Moderate  
 Poor

### ROUNDING

Rounded  
 Subrnd  
 Subang  
 Angular

Spotted  
 Ques  
 Dead

Cv-v  
 Cv-c

### EVENTS

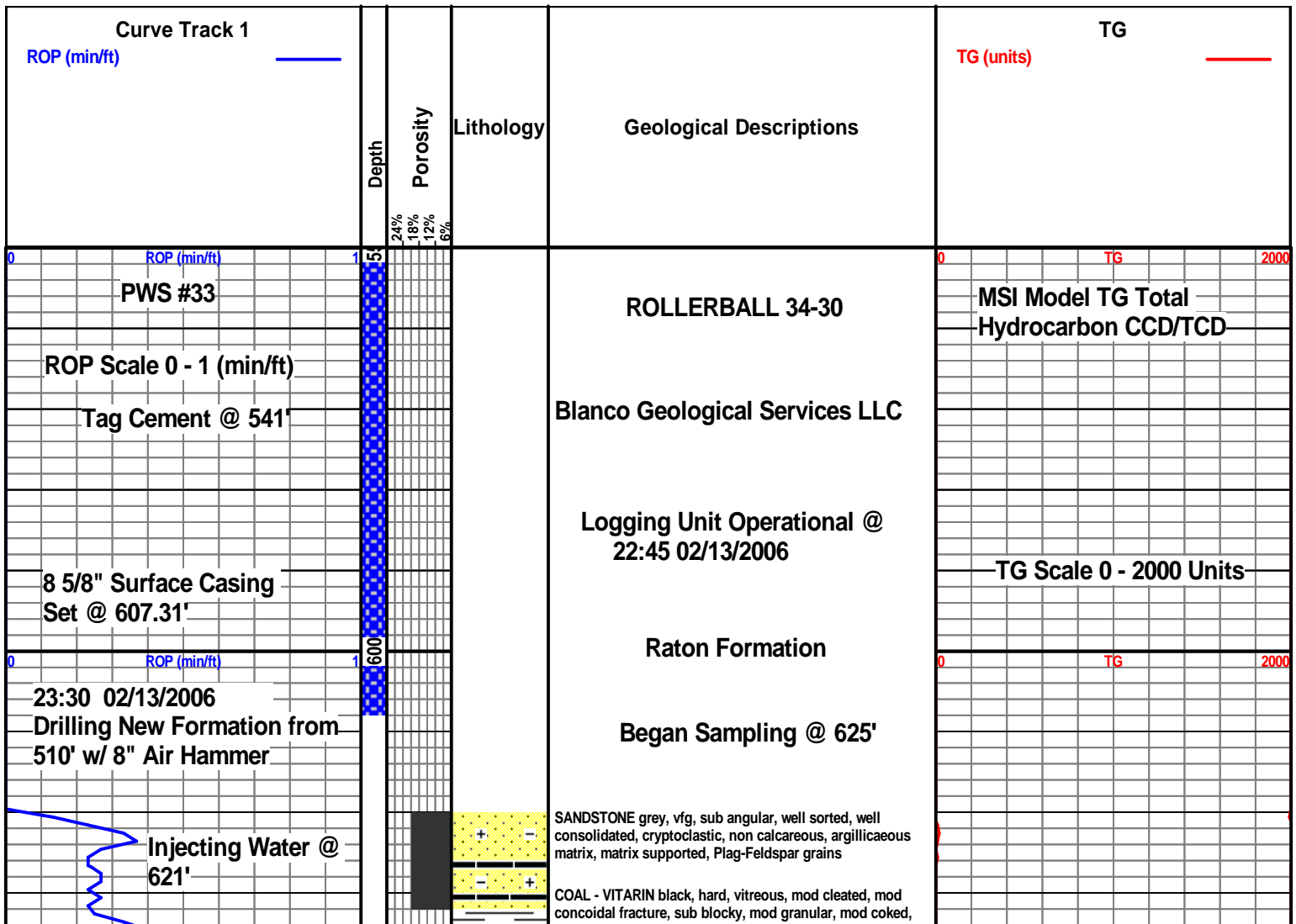
Rft  
 Sidewall  
 Srfcsg

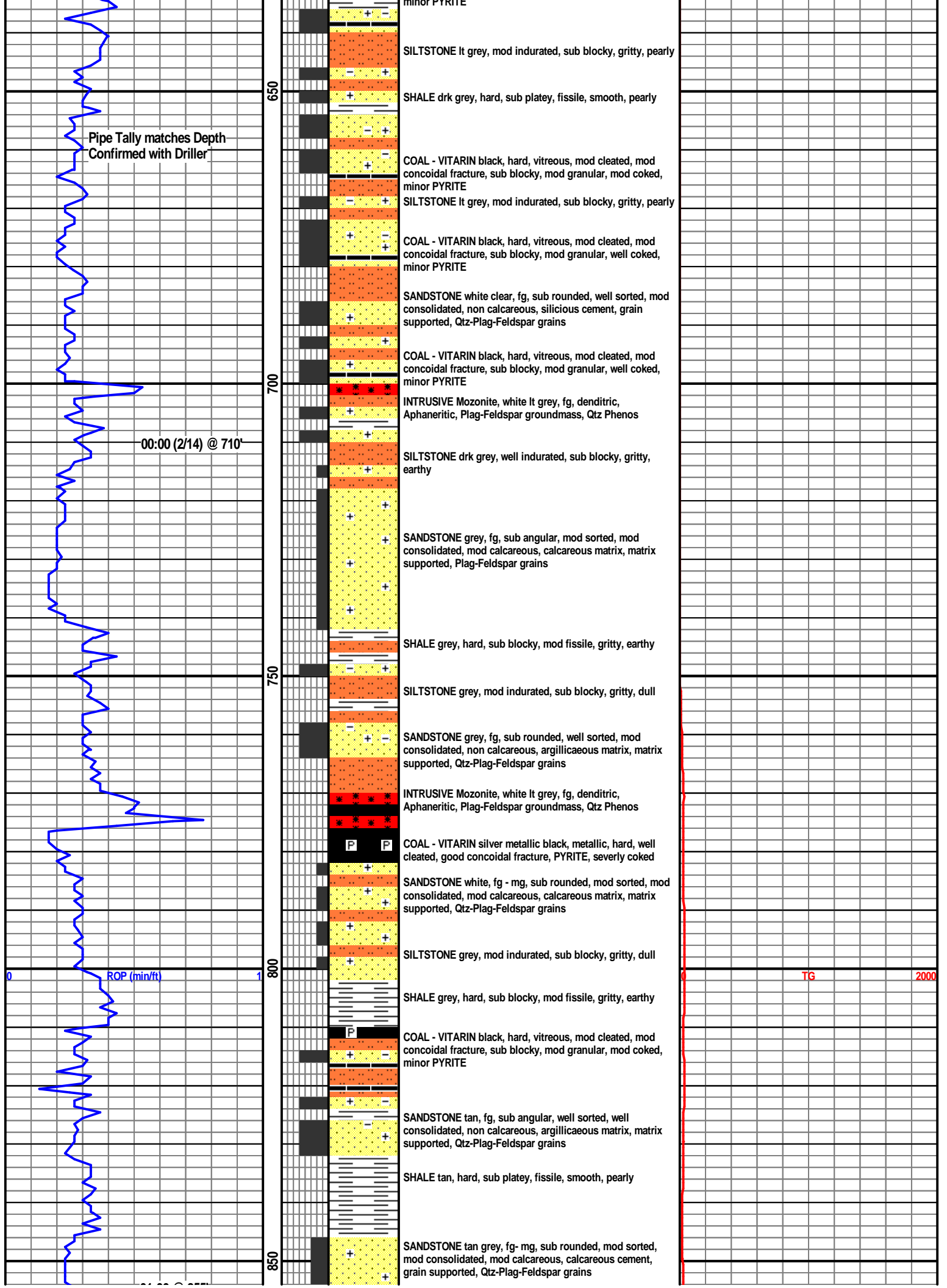
### OIL SHOWS

Even

### INTERVALS

Core  
 Dst  
 Srfcsg





01:00 @ 855'  
145'/hr

Check Valve

900

950

1000

1050

ROP (min/ft)

02:00 @ 1010'  
155'/hr

COAL - VITARIN black, hard, vitreous, well cleated, good conoidal fracture

SANDSTONE white, fg, sub angular, well sorted, well consolidated, mod calcareous, calcareous cement, grain supported, Qtz-Plag-Feldspar grains

COAL - VITARIN black, hard, vitreous, well cleated, good conoidal fracture

SILTSTONE drk grey, well indurated, sub blocky, gritty, earthy

SANDSTONE grey, fg, sub rounded, well sorted, mod consolidated, non calcareous, argillaceous matrix, matrix supported, Qtz-Plag-Feldspar grains

COAL - VITARIN black, hard, vitreous, well cleated, good conoidal fracture

SHALE tan, hard, sub blocky, mod fissile, gritty, earthy

SANDSTONE tan grey, fg, sub angular, well sorted, well consolidated, non calcareous, argillaceous matrix, matrix supported, Qtz-Plag-Feldspar grains

SHALE tan, hard, sub blocky, mod fissile, gritty, earthy

SILTSTONE tan, mod indurated, sub blocky, earthy, dull

COAL - VITARIN black, hard, vitreous, well cleated, good conoidal fracture

SILTSTONE tan, mod indurated, sub blocky, earthy, dull

SHALE tan, hard, sub blocky, mod fissile, gritty, earthy

COAL - VITARIN black, hard, vitreous, well cleated, good conoidal fracture

SANDSTONE white, fg, sub angular, well sorted, well consolidated, mod calcareous, calcareous cement, grain supported, Qtz-Plag-Feldspar grains

SHALE grey tan, hard, sub blocky, mod fissile, gritty, earthy

SANDSTONE tan grey, fg, sub angular, well sorted, well consolidated, non calcareous, argillaceous matrix, matrix supported, Qtz-Plag-Feldspar grains

COAL - VITARIN black, hard, vitreous, well cleated, good conoidal fracture

SILTSTONE grey, mod indurated, sub blocky, gritty, waxy

SHALE grey tan, hard, sub blocky, mod fissile, gritty, pearly

COAL - VITARIN black, hard, vitreous, well cleated, good conoidal fracture

SANDSTONE drk grey, fg, sub angular, well sorted, mod-well consolidated, mod calcareous, calcareous cement, grain supported, Qtz-Plag-Feldspar grains, micaceous

COAL - VITARIN black, hard, vitreous, well cleated, good conoidal fracture

SILTSTONE grey, mod indurated, sub blocky, gritty, waxy

SHALE grey tan, hard, sub blocky, mod fissile, gritty, pearly

CG

CG

CG

CG

TG

2000

CG

CG

CG

