



Weatherford

Drilling Services

Proposal



Bill Barrett Corporation

GUCCINI 41A-20-692

GARFIELD COUNTY, COLORADO

WELL FILE: **PLAN 2**

FEBRUARY 22, 2007

Weatherford International, Ltd.

15710 John F Kennedy Blvd. Ste. 700
Houston, Texas 77032 USA
+1.281.260.1300 Main
+1.281.260.4730 Fax
www.weatherford.com



GUCCINI 41A-20-692
SEC 20 T6S R92W
LATITUDE: 39° 31' 01.472"N
LONGITUDE: 107° 41' 12.819"W
GARFIELD COUNTY, COLORADO

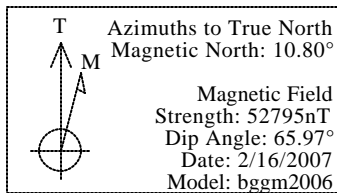
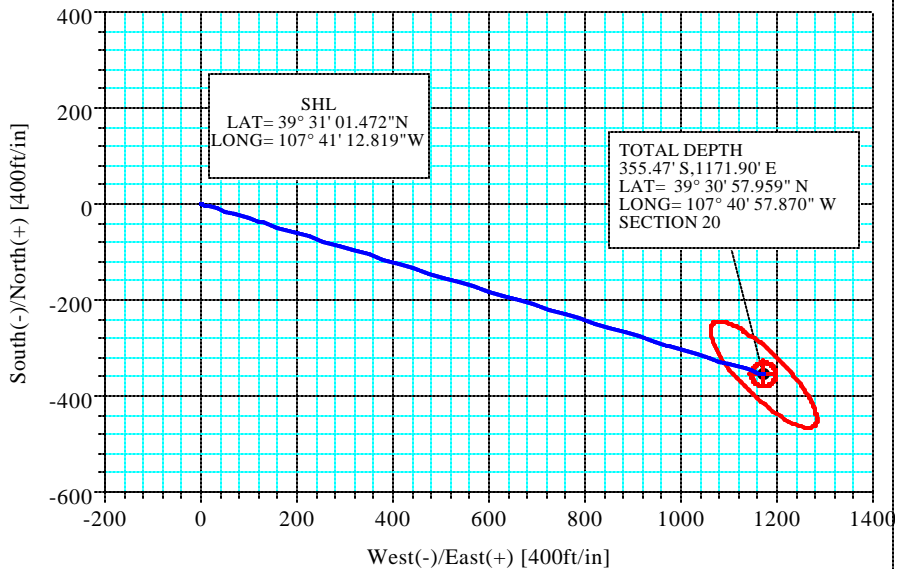
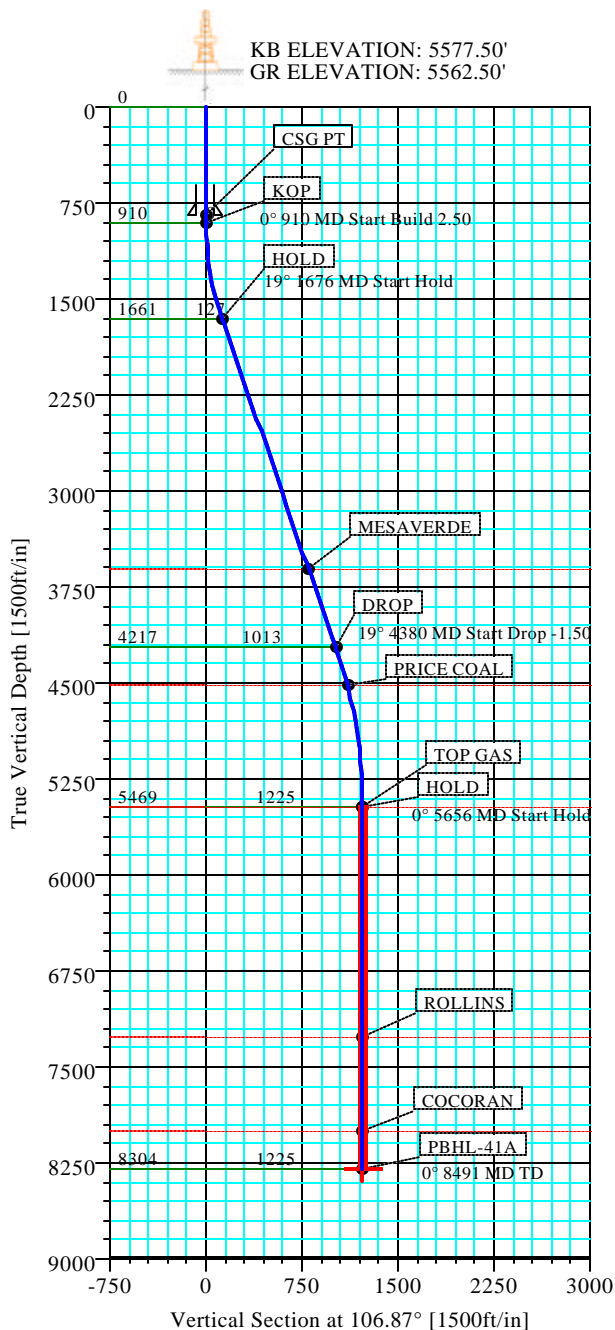
WELL DETAILS							
Name	+N/-S	+E/-W	Northing	Easting	Latitude	Longitude	Slot
GUCCINI 41A-20-692	-28.48	-14.60	14361542.37	882604.14	39°31'01.472N	107°41'12.819W	N/A

SECTION DETAILS										
Sec	MD	Inc	Azi	TVD	+N/-S	+E/-W	DLeg	TFace	VSec	Target
1	0.00	0.00	106.87	0.00	0.00	0.00	0.00	0.00	0.00	
2	910.00	0.00	106.87	910.00	0.00	0.00	0.00	0.00	0.00	
3	1675.58	19.14	106.87	1661.42	-36.77	121.23	2.50	106.87	126.69	
4	4380.30	19.14	106.87	4216.63	-294.18	969.85	0.00	0.00	1013.48	
5	5656.27	0.00	106.87	5469.00	-355.47	1171.90	1.50	180.00	1224.63	
6	8491.27	0.00	106.87	8304.00	-355.47	1171.90	0.00	106.87	1224.63	PBHL-41A

SITE DETAILS	
GUCCINI 20-692 PAD GUCCINI PAD ORIGIN 41C	
Site Centre Latitude: 39°31'01.753N Longitude: 107°41'12.633W	
Ground Level: 5562.50 Positional Uncertainty: 0.00 Convergence: -1.71	

FORMATION TOP DETAILS			
No.	TVDPath	MDPath	Formation
1	3609.00	3737.12	MESAVERDE
2	4519.00	4696.19	PRICE COAL
3	5469.00	5656.27	TOP GAS
4	7269.00	7456.27	ROLLINS
5	8004.00	8191.27	COCORAN

CASING DETAILS				
No.	TVD	MD	Name	Size
1	849.00	849.00	CSG PT	0.000



TOTAL CORRECTION TO TRUE NORTH: 10.80°



Weatherford International, Inc.

PROPOSAL PLAN REPORT



Company: BILL BARRETT CORP Field: GARFIELD COUNTY, CO (NAD 27) Site: GUCCINI 20-692 PAD Well: GUCCINI 41A-20-692 Wellpath: 1	Date: 2/22/2007 Co-ordinate(NE) Reference: Well: GUCCINI 41A-20-692, True North Vertical (TVD) Reference: SITE 5577.5 Section (VS) Reference: Well (0.00N,0.00E,106.87Azi) Survey Calculation Method: Minimum Curvature Db: Sybase
---	--

Field: GARFIELD COUNTY, CO (NAD 27)

Map System: Universal Transverse Mercator
Geo Datum: NAD27 (Clarke 1866)
Sys Datum: Mean Sea Level

Map Zone: UTM Zone 13, North 108W to 102W
Coordinate System: Well Centre
Geomagnetic Model: bggm2006

Site: GUCCINI 20-692 PAD

GUCCINI PAD ORIGIN 41C

Site Position:	Northing: 14361570.40 ft	Latitude: 39 31 1.753 N
From: Geographic	Easting: 882619.58 ft	Longitude: 107 41 12.633 W
Position Uncertainty: 0.00 ft		North Reference: True
Ground Level: 5562.50 ft		Grid Convergence: -1.71 deg

Well: GUCCINI 41A-20-692

Slot Name:

Well Position:	Northing: 14361542.37 ft	Latitude: 39 31 1.472 N
+N/-S -28.48 ft	Easting : 882604.14 ft	Longitude: 107 41 12.819 W
+E/-W -14.60 ft		
Position Uncertainty: 0.00 ft		

Wellpath: 1

Current Datum: SITE	Height 5577.50 ft	Drilled From: Surface
Magnetic Data: 2/16/2007		Tie-on Depth: 0.00 ft
Field Strength: 52795 nT		Above System Datum: Mean Sea Level
Vertical Section: Depth From (TVD)	+N/-S	Declination: 10.80 deg
ft	ft	Mag Dip Angle: 65.97 deg
		+E/-W
		Direction
		deg
0.00	0.00	106.87

Plan Section Information

MD ft	Incl deg	Azim deg	TVD ft	+N/-S ft	+E/-W ft	DLS deg/100ft	Build deg/100ft	Turn deg/100ft	TFO deg	Target
0.00	0.00	106.87	0.00	0.00	0.00	0.00	0.00	0.00	0.00	
910.00	0.00	106.87	910.00	0.00	0.00	0.00	0.00	0.00	0.00	
1675.58	19.14	106.87	1661.42	-36.77	121.23	2.50	2.50	0.00	106.87	
4380.30	19.14	106.87	4216.63	-294.18	969.85	0.00	0.00	0.00	0.00	
5656.27	0.00	106.87	5469.00	-355.47	1171.90	1.50	-1.50	0.00	180.00	
8491.27	0.00	106.87	8304.00	-355.47	1171.90	0.00	0.00	0.00	106.87	PBHL-41A

Plan: Plan #2

Date Composed: 2/19/2007

Principal: Yes

Version: 1
Tied-to: From Surface

Survey

MD ft	Incl deg	Azim deg	TVD ft	VS ft	N/S ft	E/W ft	DLS deg/100ft	Long	Long	Comment
900.00	0.00	106.87	900.00	0.00	0.00	0.00	0.00	39 31	1.472 N 107 41	12.819 W
910.00	0.00	106.87	910.00	0.00	0.00	0.00	0.00	39 31	1.472 N 107 41	12.819 W KOP
1000.00	2.25	106.87	999.98	1.77	-0.51	1.69	2.50	39 31	1.467 N 107 41	12.798 W
1100.00	4.75	106.87	1099.78	7.87	-2.28	7.53	2.50	39 31	1.449 N 107 41	12.723 W
1200.00	7.25	106.87	1199.23	18.32	-5.32	17.53	2.50	39 31	1.419 N 107 41	12.596 W
1300.00	9.75	106.87	1298.12	33.10	-9.61	31.68	2.50	39 31	1.377 N 107 41	12.415 W
1400.00	12.25	106.87	1396.28	52.18	-15.15	49.94	2.50	39 31	1.322 N 107 41	12.182 W
1500.00	14.75	106.87	1493.50	75.53	-21.92	72.27	2.50	39 31	1.255 N 107 41	11.897 W
1600.00	17.25	106.87	1589.62	103.09	-29.92	98.65	2.50	39 31	1.176 N 107 41	11.561 W
1675.58	19.14	106.87	1661.42	126.69	-36.77	121.23	2.50	39 31	1.108 N 107 41	11.273 W HOLD
1700.00	19.14	106.87	1684.49	134.69	-39.10	128.89	0.00	39 31	1.085 N 107 41	11.175 W
1800.00	19.14	106.87	1778.96	167.48	-48.61	160.27	0.00	39 31	0.991 N 107 41	10.775 W
1900.00	19.14	106.87	1873.44	200.27	-58.13	191.64	0.00	39 31	0.897 N 107 41	10.375 W
2000.00	19.14	106.87	1967.91	233.05	-67.65	223.02	0.00	39 31	0.803 N 107 41	9.974 W
2100.00	19.14	106.87	2062.38	265.84	-77.16	254.39	0.00	39 31	0.709 N 107 41	9.574 W

Weatherford International, Inc.

PROPOSAL PLAN REPORT



Company: BILL BARRETT CORP Field: GARFIELD COUNTY, CO (NAD 27) Site: GUCCINI 20-692 PAD Well: GUCCINI 41A-20-692 Wellpath: 1	Date: 2/22/2007 Co-ordinate(NE) Reference: Well: GUCCINI 41A-20-692, True North Vertical (TVD) Reference: SITE 5577.5 Section (VS) Reference: Well (0.00N,0.00E,106.87Azi) Survey Calculation Method: Minimum Curvature Db: Sybase
---	--

Survey

MD ft	Incl deg	Azim deg	TVD ft	VS ft	N/S ft	E/W ft	DLS deg/100ft	Long	Long	Comment
2200.00	19.14	106.87	2156.85	298.63	-86.68	285.77	0.00	39 31	0.615 N 107 41	9.174 W
2300.00	19.14	106.87	2251.32	331.41	-96.20	317.15	0.00	39 31	0.521 N 107 41	8.774 W
2400.00	19.14	106.87	2345.80	364.20	-105.72	348.52	0.00	39 31	0.427 N 107 41	8.373 W
2500.00	19.14	106.87	2440.27	396.99	-115.23	379.90	0.00	39 31	0.333 N 107 41	7.973 W
2600.00	19.14	106.87	2534.74	429.78	-124.75	411.27	0.00	39 31	0.239 N 107 41	7.573 W
2700.00	19.14	106.87	2629.21	462.56	-134.27	442.65	0.00	39 31	0.145 N 107 41	7.173 W
2800.00	19.14	106.87	2723.69	495.35	-143.78	474.02	0.00	39 31	0.051 N 107 41	6.772 W
2900.00	19.14	106.87	2818.16	528.14	-153.30	505.40	0.00	39 30	59.957 N 107 41	6.372 W
3000.00	19.14	106.87	2912.63	560.92	-162.82	536.77	0.00	39 30	59.863 N 107 41	5.972 W
3100.00	19.14	106.87	3007.10	593.71	-172.33	568.15	0.00	39 30	59.769 N 107 41	5.572 W
3200.00	19.14	106.87	3101.58	626.50	-181.85	599.52	0.00	39 30	59.675 N 107 41	5.171 W
3300.00	19.14	106.87	3196.05	659.28	-191.37	630.90	0.00	39 30	59.581 N 107 41	4.771 W
3400.00	19.14	106.87	3290.52	692.07	-200.89	662.27	0.00	39 30	59.487 N 107 41	4.371 W
3500.00	19.14	106.87	3384.99	724.86	-210.40	693.65	0.00	39 30	59.393 N 107 41	3.971 W
3600.00	19.14	106.87	3479.46	757.65	-219.92	725.03	0.00	39 30	59.299 N 107 41	3.570 W
3700.00	19.14	106.87	3573.94	790.43	-229.44	756.40	0.00	39 30	59.204 N 107 41	3.170 W
3737.12	19.14	106.87	3609.00	802.60	-232.97	768.05	0.00	39 30	59.170 N 107 41	3.022 W MESAVERDE
3800.00	19.14	106.87	3668.41	823.22	-238.95	787.78	0.00	39 30	59.110 N 107 41	2.770 W
3900.00	19.14	106.87	3762.88	856.01	-248.47	819.15	0.00	39 30	59.016 N 107 41	2.370 W
4000.00	19.14	106.87	3857.35	888.79	-257.99	850.53	0.00	39 30	58.922 N 107 41	1.970 W
4100.00	19.14	106.87	3951.83	921.58	-267.50	881.90	0.00	39 30	58.828 N 107 41	1.569 W
4200.00	19.14	106.87	4046.30	954.37	-277.02	913.28	0.00	39 30	58.734 N 107 41	1.169 W
4300.00	19.14	106.87	4140.77	987.15	-286.54	944.65	0.00	39 30	58.640 N 107 41	0.769 W
4380.30	19.14	106.87	4216.63	1013.48	-294.18	969.85	0.00	39 30	58.565 N 107 41	0.447 W DROP
4400.00	18.84	106.87	4235.26	1019.89	-296.04	975.98	1.50	39 30	58.546 N 107 41	0.369 W
4500.00	17.34	106.87	4330.31	1050.95	-305.06	1005.70	1.50	39 30	58.457 N 107 40	59.990 W
4600.00	15.84	106.87	4426.14	1079.51	-313.35	1033.03	1.50	39 30	58.375 N 107 40	59.641 W
4696.19	14.40	106.87	4519.00	1104.60	-320.63	1057.04	1.50	39 30	58.303 N 107 40	59.335 W PRICE COAL
4700.00	14.34	106.87	4522.69	1105.55	-320.90	1057.95	1.50	39 30	58.301 N 107 40	59.324 W
4800.00	12.84	106.87	4619.89	1129.05	-327.73	1080.44	1.50	39 30	58.233 N 107 40	59.037 W
4900.00	11.34	106.87	4717.66	1150.00	-333.81	1100.49	1.50	39 30	58.173 N 107 40	58.781 W
5000.00	9.84	106.87	4815.96	1168.39	-339.14	1118.08	1.50	39 30	58.120 N 107 40	58.557 W
5100.00	8.34	106.87	4914.70	1184.19	-343.73	1133.21	1.50	39 30	58.075 N 107 40	58.364 W
5200.00	6.84	106.87	5013.82	1197.41	-347.57	1145.85	1.50	39 30	58.037 N 107 40	58.202 W
5300.00	5.34	106.87	5113.25	1208.02	-350.65	1156.01	1.50	39 30	58.007 N 107 40	58.073 W
5400.00	3.84	106.87	5212.93	1216.03	-352.97	1163.68	1.50	39 30	57.984 N 107 40	57.975 W
5500.00	2.34	106.87	5312.78	1221.43	-354.54	1168.84	1.50	39 30	57.968 N 107 40	57.909 W
5600.00	0.84	106.87	5412.74	1224.21	-355.35	1171.50	1.50	39 30	57.960 N 107 40	57.875 W
5656.27	0.00	106.87	5469.00	1224.63	-355.47	1171.90	1.50	39 30	57.959 N 107 40	57.870 W TOP GAS
5700.00	0.00	106.87	5512.73	1224.63	-355.47	1171.90	0.00	39 30	57.959 N 107 40	57.870 W
5800.00	0.00	106.87	5612.73	1224.63	-355.47	1171.90	0.00	39 30	57.959 N 107 40	57.870 W
5900.00	0.00	106.87	5712.73	1224.63	-355.47	1171.90	0.00	39 30	57.959 N 107 40	57.870 W
6000.00	0.00	106.87	5812.73	1224.63	-355.47	1171.90	0.00	39 30	57.959 N 107 40	57.870 W
6100.00	0.00	106.87	5912.73	1224.63	-355.47	1171.90	0.00	39 30	57.959 N 107 40	57.870 W
6200.00	0.00	106.87	6012.73	1224.63	-355.47	1171.90	0.00	39 30	57.959 N 107 40	57.870 W
6300.00	0.00	106.87	6112.73	1224.63	-355.47	1171.90	0.00	39 30	57.959 N 107 40	57.870 W
6400.00	0.00	106.87	6212.73	1224.63	-355.47	1171.90	0.00	39 30	57.959 N 107 40	57.870 W
6500.00	0.00	106.87	6312.73	1224.63	-355.47	1171.90	0.00	39 30	57.959 N 107 40	57.870 W
6600.00	0.00	106.87	6412.73	1224.63	-355.47	1171.90	0.00	39 30	57.959 N 107 40	57.870 W
6700.00	0.00	106.87	6512.73	1224.63	-355.47	1171.90	0.00	39 30	57.959 N 107 40	57.870 W
6800.00	0.00	106.87	6612.73	1224.63	-355.47	1171.90	0.00	39 30	57.959 N 107 40	57.870 W
6900.00	0.00	106.87	6712.73	1224.63	-355.47	1171.90	0.00	39 30	57.959 N 107 40	57.870 W
7000.00	0.00	106.87	6812.73	1224.63	-355.47	1171.90	0.00	39 30	57.959 N 107 40	57.870 W

Weatherford International, Inc.

Anticollision Report



Company: BILL BARRETT CORP	Date: 2/22/2007	Time: 16:55:28	Page: 1
Field: GARFIELD COUNTY, CO (NAD 27)			
Reference Site: GUCCINI 20-692 PAD	Co-ordinate(NE) Reference: Well: GUCCINI 41A-20-692, True North		
Reference Well: GUCCINI 41A-20-692	Vertical (TVD) Reference: SITE 5577.5		
Reference Wellpath: 1	Db: Sybase		

NO GLOBAL SCAN: Using user defined selection & scan criteria
Interpolation Method: MD **Interval:** 100.00 ft
Depth Range: 0.00 to 8527.56 ft
Maximum Radius: 10000.00 ft

Reference: Plan: Plan #2
Error Model: ISCWSA Ellipse
Scan Method: Closest Approach 3D
Error Surface: Ellipse

Plan: Plan #2	Date Composed: 2/19/2007
Principal: Yes	Version: 1
	Tied-to: From Surface

Summary

<----- Offset Wellpath ----->			Reference	Offset	Ctr-Ctr	Edge	Separation	Warning
Site	Well	Wellpath	MD ft	MD ft	Distance ft	Distance ft	Factor	
GUCCINI 20-692 PAD	GUCCINI 31A-20-692	V0 Plan: Plan #2 V1	900.00	899.83	16.21	12.42	4.28	
GUCCINI 20-692 PAD	GUCCINI 31C-20-692	V0 Plan: Plan #2 V1	1000.00	999.63	17.13	12.89	4.04	
GUCCINI 20-692 PAD	GUCCINI 31D-20-692	V0	1100.00	1101.14	56.36	51.74	12.21	
GUCCINI 20-692 PAD	GUCCINI 41C-20-692	V0 Plan: Plan #2 V1	1100.00	1098.29	35.41	30.72	7.55	

Site: GUCCINI 20-692 PAD
Well: GUCCINI 31A-20-692
Wellpath: 1 V0 Plan: Plan #2 V1

Inter-Site Error: 0.00 ft

Reference MD ft	TVD ft	Offset MD ft	TVD ft	Semi-Major Axis Ref ft	Offset ft	TFO-HS deg	Offset Location North ft	East ft	Ctr-Ctr Distance ft	Edge Distance ft	Separation Factor	Warning
0.00	0.00	0.00	0.00	0.00	0.00	207.14	-14.24	-7.30	16.00			No Data
100.00	100.00	100.00	100.00	0.10	0.10	207.14	-14.24	-7.30	16.00	15.81	83.76	
200.00	200.00	200.00	200.00	0.32	0.32	207.14	-14.24	-7.30	16.00	15.36	24.98	
300.00	300.00	300.00	300.00	0.55	0.55	207.14	-14.24	-7.30	16.00	14.91	14.68	
400.00	400.00	400.00	400.00	0.77	0.77	207.14	-14.24	-7.30	16.00	14.46	10.39	
500.00	500.00	500.00	500.00	0.99	0.99	207.14	-14.24	-7.30	16.00	14.01	8.04	
600.00	600.00	600.00	600.00	1.22	1.22	207.14	-14.24	-7.30	16.00	13.56	6.56	
700.00	700.00	700.00	700.00	1.44	1.44	207.14	-14.24	-7.30	16.00	13.11	5.54	
800.00	800.00	800.00	800.00	1.67	1.67	207.14	-14.24	-7.30	16.00	12.66	4.79	
900.00	900.00	899.83	899.83	1.89	1.89	207.20	-14.42	-7.41	16.21	12.42	4.28	
1000.00	999.98	999.32	999.29	2.12	2.12	106.04	-16.40	-8.63	18.96	14.73	4.48	
1100.00	1099.78	1098.35	1098.20	2.35	2.35	118.46	-20.57	-11.19	26.22	21.54	5.60	
1200.00	1199.23	1196.53	1196.10	2.59	2.58	128.98	-26.86	-15.05	39.19	34.05	7.62	
1300.00	1298.12	1294.47	1293.61	2.86	2.83	136.29	-34.59	-19.80	57.40	51.77	10.21	
1400.00	1396.28	1391.75	1390.47	3.17	3.08	141.90	-42.30	-24.54	79.48	73.37	13.00	
1500.00	1493.50	1488.00	1486.31	3.54	3.33	146.26	-49.93	-29.23	105.54	98.92	15.95	
1600.00	1589.62	1583.05	1580.95	3.98	3.59	149.69	-57.47	-33.86	135.62	128.48	19.01	
1700.00	1684.49	1676.77	1674.25	4.51	3.84	152.52	-64.90	-38.42	169.60	161.93	22.12	
1800.00	1778.96	1770.05	1767.13	5.08	4.09	154.78	-72.30	-42.97	204.95	196.72	24.90	
1900.00	1873.44	1863.34	1860.02	5.69	4.35	156.38	-79.70	-47.51	240.50	231.70	27.33	
2000.00	1967.91	1956.63	1952.90	6.31	4.60	157.56	-87.09	-52.05	276.17	266.79	29.45	
2100.00	2062.38	2049.92	2045.79	6.94	4.86	158.48	-94.49	-56.60	311.92	301.96	31.31	
2200.00	2156.85	2143.21	2138.67	7.59	5.12	159.21	-101.89	-61.14	347.72	337.17	32.96	
2300.00	2251.32	2236.50	2231.55	8.25	5.38	159.80	-109.29	-65.69	383.57	372.43	34.43	
2400.00	2345.80	2329.79	2324.44	8.91	5.64	160.29	-116.68	-70.23	419.44	407.70	35.74	
2500.00	2440.27	2423.07	2417.32	9.57	5.90	160.70	-124.08	-74.78	455.34	443.00	36.92	
2600.00	2534.74	2516.36	2510.20	10.24	6.17	161.06	-131.48	-79.32	491.25	478.32	37.98	
2700.00	2629.21	2609.65	2603.09	10.92	6.43	161.36	-138.88	-83.86	527.18	513.64	38.95	
2800.00	2723.69	2702.94	2695.97	11.59	6.69	161.63	-146.27	-88.41	563.12	548.98	39.83	
2900.00	2818.16	2796.23	2788.86	12.27	6.96	161.86	-153.67	-92.95	599.07	584.32	40.63	
3000.00	2912.63	2889.52	2881.74	12.95	7.22	162.07	-161.07	-97.50	635.02	619.67	41.37	
3100.00	3007.10	2982.81	2974.62	13.64	7.49	162.25	-168.46	-102.04	670.99	655.03	42.04	
3200.00	3101.58	3076.09	3067.51	14.32	7.75	162.42	-175.86	-106.59	706.96	690.39	42.67	
3300.00	3196.05	3169.38	3160.39	15.00	8.02	162.57	-183.26	-111.13	742.93	725.75	43.25	
3400.00	3290.52	3262.67	3253.27	15.69	8.28	162.71	-190.66	-115.67	778.91	761.12	43.79	

Weatherford International, Inc.

Anticollision Report



Company: BILL BARRETT CORP	Date: 2/22/2007	Time: 16:55:28	Page: 2
Field: GARFIELD COUNTY, CO (NAD 27)			
Reference Site: GUCCINI 20-692 PAD	Co-ordinate(NE) Reference: Well: GUCCINI 41A-20-692, True North		
Reference Well: GUCCINI 41A-20-692	Vertical (TVD) Reference: SITE 5577.5		
Reference Wellpath: 1	Db: Sybase		

Site: GUCCINI 20-692 PAD
Well: GUCCINI 31A-20-692
Wellpath: 1 V0 Plan: Plan #2 V1

Inter-Site Error: 0.00 ft

Reference		Offset		Semi-Major Axis			Offset Location		Ctr-Ctr Distance ft	Edge Distance ft	Separation Factor	Warning
MD ft	TVD ft	MD ft	TVD ft	Ref ft	Offset ft	TFO-HS deg	North ft	East ft				
3500.00	3384.99	3355.96	3346.16	16.38	8.55	162.83	-198.05	-120.22	814.89	796.49	44.29	
3600.00	3479.46	3449.25	3439.04	17.06	8.81	162.95	-205.45	-124.76	850.87	831.86	44.75	
3700.00	3573.94	3542.54	3531.93	17.75	9.08	163.05	-212.85	-129.31	886.86	867.23	45.19	
3800.00	3668.41	3635.83	3624.81	18.44	9.35	163.15	-220.25	-133.85	922.85	902.61	45.60	
3900.00	3762.88	3729.11	3717.69	19.13	9.61	163.24	-227.64	-138.40	958.84	937.99	45.98	
4000.00	3857.35	3822.40	3810.58	19.82	9.88	163.32	-235.04	-142.94	994.83	973.36	46.34	
4100.00	3951.83	3915.69	3903.46	20.51	10.15	163.40	-242.44	-147.48	1030.83	1008.74	46.68	
4200.00	4046.30	4008.98	3996.34	21.20	10.41	163.47	-249.84	-152.03	1066.82	1044.12	47.00	
4300.00	4140.77	4102.27	4089.23	21.90	10.68	163.54	-257.23	-156.57	1102.82	1079.51	47.30	
4400.00	4235.26	4195.57	4182.13	22.57	10.95	163.63	-264.63	-161.12	1138.77	1114.85	47.60	
4500.00	4330.31	4289.48	4275.63	23.09	11.22	163.82	-272.08	-165.69	1173.13	1148.68	47.97	
4600.00	4426.14	4384.22	4369.96	23.57	11.49	163.95	-279.59	-170.31	1205.12	1180.14	48.24	
4700.00	4522.69	4479.74	4465.06	24.02	11.76	164.04	-287.16	-174.96	1234.72	1209.22	48.43	
4800.00	4619.89	4575.96	4560.86	24.43	12.04	164.08	-294.79	-179.65	1261.90	1235.91	48.55	
4900.00	4717.66	4672.82	4657.30	24.80	12.32	164.08	-302.47	-184.36	1286.65	1260.17	48.59	
5000.00	4815.96	4770.25	4754.31	25.13	12.60	164.04	-310.20	-189.11	1308.97	1282.01	48.56	
5100.00	4914.70	4868.19	4851.82	25.42	12.88	163.97	-317.97	-193.88	1328.83	1301.41	48.47	
5200.00	5013.82	4966.57	4949.77	25.68	13.16	163.86	-325.77	-198.67	1346.23	1318.37	48.32	
5300.00	5113.25	5074.72	5057.51	25.90	13.40	163.70	-333.90	-203.67	1360.93	1332.68	48.17	
5400.00	5212.93	5187.93	5170.43	26.09	13.61	163.57	-340.64	-207.81	1372.20	1343.61	47.99	
5500.00	5312.78	5301.72	5284.09	26.24	13.81	163.47	-345.49	-210.79	1379.96	1351.06	47.75	
5600.00	5412.74	5415.90	5398.21	26.36	13.99	163.41	-348.43	-212.59	1384.19	1355.01	47.44	
5700.00	5512.73	5530.25	5512.55	26.45	14.16	270.25	-349.42	-213.21	1385.12	1344.96	34.49	
5800.00	5612.73	5630.43	5612.73	26.55	14.34	270.25	-349.42	-213.21	1385.12	1344.23	33.88	
5900.00	5712.73	5730.43	5712.73	26.65	14.54	270.25	-349.42	-213.21	1385.12	1343.94	33.64	
6000.00	5812.73	5830.43	5812.73	26.75	14.73	270.25	-349.42	-213.21	1385.12	1343.64	33.39	
6100.00	5912.73	5930.43	5912.73	26.85	14.93	270.25	-349.42	-213.21	1385.12	1343.34	33.16	
6200.00	6012.73	6030.43	6012.73	26.96	15.12	270.25	-349.42	-213.21	1385.12	1343.04	32.92	
6300.00	6112.73	6130.43	6112.73	27.06	15.32	270.25	-349.42	-213.21	1385.12	1342.74	32.68	
6400.00	6212.73	6230.43	6212.73	27.17	15.52	270.25	-349.42	-213.21	1385.12	1342.43	32.45	
6500.00	6312.73	6330.43	6312.73	27.28	15.72	270.25	-349.42	-213.21	1385.12	1342.12	32.21	
6600.00	6412.73	6430.43	6412.73	27.39	15.92	270.25	-349.42	-213.21	1385.12	1341.81	31.98	
6700.00	6512.73	6530.43	6512.73	27.50	16.12	270.25	-349.42	-213.21	1385.12	1341.50	31.75	
6800.00	6612.73	6630.43	6612.73	27.62	16.32	270.25	-349.42	-213.21	1385.12	1341.18	31.53	
6900.00	6712.73	6730.43	6712.73	27.73	16.52	270.25	-349.42	-213.21	1385.12	1340.87	31.30	
7000.00	6812.73	6830.43	6812.73	27.85	16.72	270.25	-349.42	-213.21	1385.12	1340.55	31.08	
7100.00	6912.73	6930.43	6912.73	27.97	16.93	270.25	-349.42	-213.21	1385.12	1340.23	30.86	
7200.00	7012.73	7030.43	7012.73	28.09	17.13	270.25	-349.42	-213.21	1385.12	1339.91	30.64	
7300.00	7112.73	7130.43	7112.73	28.21	17.33	270.25	-349.42	-213.21	1385.12	1339.58	30.42	
7400.00	7212.73	7230.43	7212.73	28.33	17.54	270.25	-349.42	-213.21	1385.12	1339.26	30.20	
7500.00	7312.73	7330.43	7312.73	28.45	17.74	270.25	-349.42	-213.21	1385.12	1338.93	29.99	
7600.00	7412.73	7430.43	7412.73	28.57	17.95	270.25	-349.42	-213.21	1385.12	1338.60	29.78	
7700.00	7512.73	7530.43	7512.73	28.70	18.15	270.25	-349.42	-213.21	1385.12	1338.27	29.56	
7800.00	7612.73	7576.70	7559.00	28.83	18.25	270.25	-349.42	-213.21	1386.16	1339.09	29.45	
7900.00	7712.73	7576.70	7559.00	28.95	18.25	270.25	-349.42	-213.21	1393.62	1346.42	29.53	
8000.00	7812.73	7576.70	7559.00	29.08	18.25	270.25	-349.42	-213.21	1408.17	1360.84	29.75	
8100.00	7912.73	7576.70	7559.00	29.21	18.25	270.25	-349.42	-213.21	1429.57	1382.12	30.12	
8200.00	8012.73	7576.70	7559.00	29.34	18.25	270.25	-349.42	-213.21	1457.54	1409.95	30.63	
8300.00	8112.73	7576.70	7559.00	29.48	18.25	270.25	-349.42	-213.21	1491.70	1443.98	31.26	
8400.00	8212.73	7576.70	7559.00	29.61	18.25	270.25	-349.42	-213.21	1531.64	1483.79	32.01	

Weatherford International, Inc.

Anticollision Report



Company: BILL BARRETT CORP	Date: 2/22/2007	Time: 16:55:28	Page: 3
Field: GARFIELD COUNTY, CO (NAD 27)			
Reference Site: GUCCINI 20-692 PAD	Co-ordinate(NE) Reference: Well: GUCCINI 41A-20-692, True North		
Reference Well: GUCCINI 41A-20-692	Vertical (TVD) Reference: SITE 5577.5		
Reference Wellpath: 1	Db: Sybase		

Site: GUCCINI 20-692 PAD
Well: GUCCINI 31C-20-692
Wellpath: 1 V0 Plan: Plan #2 V1

Inter-Site Error: 0.00 ft

Reference		Offset		Semi-Major Axis			Offset Location		Ctr-Ctr	Edge	Separation	Warning
MD	TVD	MD	TVD	Ref	Offset	TFO-HS	North	East	Distance	Distance	Factor	
ft	ft	ft	ft	ft	ft	deg	ft	ft	ft	ft		
0.00	0.00	0.00	0.00	0.00	0.00	27.14	14.24	7.30	16.00			No Data
100.00	100.00	100.00	100.00	0.10	0.10	27.14	14.24	7.30	16.00	15.81	83.76	
200.00	200.00	200.00	200.00	0.32	0.32	27.14	14.24	7.30	16.00	15.36	24.98	
300.00	300.00	300.00	300.00	0.55	0.55	27.14	14.24	7.30	16.00	14.91	14.68	
400.00	400.00	400.00	400.00	0.77	0.77	27.14	14.24	7.30	16.00	14.46	10.39	
500.00	500.00	500.00	500.00	0.99	0.99	27.14	14.24	7.30	16.00	14.01	8.04	
600.00	600.00	600.00	600.00	1.22	1.22	27.14	14.24	7.30	16.00	13.56	6.56	
700.00	700.00	700.00	700.00	1.44	1.44	27.14	14.24	7.30	16.00	13.11	5.54	
800.00	800.00	800.00	800.00	1.67	1.67	27.14	14.24	7.30	16.00	12.66	4.79	
900.00	900.00	899.94	899.94	1.89	1.89	26.62	14.37	7.20	16.07	12.28	4.24	
1000.00	999.98	999.63	999.61	2.12	2.12	267.17	16.10	5.83	17.13	12.89	4.04	
1100.00	1099.78	1098.69	1098.54	2.35	2.34	241.58	19.86	2.88	22.66	17.97	4.84	
1200.00	1199.23	1196.55	1196.13	2.59	2.57	221.98	25.54	-1.59	36.44	31.31	7.11	
1300.00	1298.12	1294.04	1293.27	2.86	2.80	211.27	32.10	-6.74	56.91	51.35	10.23	
1400.00	1396.28	1390.50	1389.37	3.17	3.04	205.08	38.58	-11.84	82.17	76.16	13.68	
1500.00	1493.50	1485.73	1484.26	3.54	3.28	201.09	44.98	-16.88	111.85	105.40	17.33	
1600.00	1589.62	1579.57	1577.75	3.98	3.51	198.32	51.29	-21.84	145.79	138.89	21.12	
1700.00	1684.49	1671.87	1669.71	4.51	3.75	196.23	57.50	-26.72	183.75	176.39	24.95	
1800.00	1778.96	1763.70	1761.20	5.08	3.98	194.62	63.67	-31.58	223.00	215.14	28.37	
1900.00	1873.44	1855.53	1852.69	5.69	4.22	193.49	69.85	-36.43	262.35	253.99	31.37	
2000.00	1967.91	1947.35	1944.18	6.31	4.46	192.66	76.02	-41.29	301.77	292.89	34.01	
2100.00	2062.38	2039.18	2035.68	6.94	4.70	192.01	82.20	-46.15	341.22	331.83	36.34	
2200.00	2156.85	2131.01	2127.17	7.59	4.94	191.51	88.37	-51.00	380.71	370.80	38.43	
2300.00	2251.32	2222.83	2218.66	8.25	5.19	191.09	94.54	-55.86	420.22	409.78	40.29	
2400.00	2345.80	2314.66	2310.15	8.91	5.43	190.75	100.72	-60.71	459.74	448.78	41.96	
2500.00	2440.27	2406.49	2401.64	9.57	5.67	190.46	106.89	-65.57	499.27	487.79	43.47	
2600.00	2534.74	2498.31	2493.13	10.24	5.92	190.21	113.07	-70.42	538.81	526.80	44.84	
2700.00	2629.21	2590.14	2584.62	10.92	6.16	190.00	119.24	-75.28	578.36	565.81	46.09	
2800.00	2723.69	2681.97	2676.11	11.59	6.41	189.82	125.41	-80.14	617.92	604.84	47.23	
2900.00	2818.16	2773.80	2767.60	12.27	6.65	189.65	131.59	-84.99	657.48	643.86	48.28	
3000.00	2912.63	2865.62	2859.09	12.95	6.90	189.51	137.76	-89.85	697.04	682.89	49.24	
3100.00	3007.10	2957.45	2950.58	13.64	7.15	189.38	143.94	-94.70	736.61	721.92	50.13	
3200.00	3101.58	3049.28	3042.07	14.32	7.39	189.26	150.11	-99.56	776.18	760.95	50.96	
3300.00	3196.05	3141.10	3133.56	15.00	7.64	189.16	156.28	-104.41	815.75	799.98	51.72	
3400.00	3290.52	3232.93	3225.05	15.69	7.89	189.06	162.46	-109.27	855.33	839.02	52.43	
3500.00	3384.99	3324.76	3316.54	16.38	8.14	188.98	168.63	-114.13	894.91	878.05	53.09	
3600.00	3479.46	3416.59	3408.03	17.06	8.38	188.90	174.81	-118.98	934.48	917.09	53.72	
3700.00	3573.94	3508.41	3499.52	17.75	8.63	188.83	180.98	-123.84	974.06	956.12	54.30	
3800.00	3668.41	3600.24	3591.01	18.44	8.88	188.76	187.15	-128.69	1013.64	995.16	54.84	
3900.00	3762.88	3692.07	3682.50	19.13	9.13	188.70	193.33	-133.55	1053.23	1034.20	55.35	
4000.00	3857.35	3783.89	3773.99	19.82	9.38	188.64	199.50	-138.41	1092.81	1073.24	55.84	
4100.00	3951.83	3875.72	3865.48	20.51	9.62	188.59	205.68	-143.26	1132.39	1112.28	56.29	
4200.00	4046.30	3967.55	3956.98	21.20	9.87	188.54	211.85	-148.12	1171.98	1151.32	56.72	
4300.00	4140.77	4059.37	4048.47	21.90	10.12	188.49	218.02	-152.97	1211.56	1190.36	57.13	
4400.00	4235.26	4151.22	4139.98	22.57	10.37	188.43	224.20	-157.83	1251.10	1229.35	57.52	
4500.00	4330.31	4243.75	4232.16	23.09	10.62	188.31	230.42	-162.72	1289.02	1266.77	57.91	
4600.00	4426.14	4337.23	4325.30	23.57	10.87	188.22	236.71	-167.67	1324.54	1301.78	58.21	
4700.00	4522.69	4431.59	4419.32	24.02	11.13	188.15	243.05	-172.66	1357.61	1334.38	58.44	
4800.00	4619.89	4526.79	4514.16	24.43	11.39	188.11	249.45	-177.69	1388.24	1364.54	58.58	
4900.00	4717.66	4622.74	4609.76	24.80	11.65	188.08	255.90	-182.76	1416.38	1392.24	58.66	
5000.00	4815.96	4719.38	4706.05	25.13	11.91	188.08	262.40	-187.87	1442.03	1417.46	58.68	

Weatherford International, Inc.

Anticollision Report



Company: BILL BARRETT CORP	Date: 2/22/2007	Time: 16:55:28	Page: 4
Field: GARFIELD COUNTY, CO (NAD 27)			
Reference Site: GUCCINI 20-692 PAD	Co-ordinate(NE) Reference:	Well: GUCCINI 41A-20-692, True North	
Reference Well: GUCCINI 41A-20-692	Vertical (TVD) Reference:	SITE 5577.5	
Reference Wellpath: 1	Db: Sybase		

Site: GUCCINI 20-692 PAD
Well: GUCCINI 31C-20-692
Wellpath: 1 V0 Plan: Plan #2 V1

Inter-Site Error: 0.00 ft

Reference		Offset		Semi-Major Axis			Offset Location		Ctr-Ctr	Edge	Separation	Warning
MD	TVD	MD	TVD	Ref	Offset	TFO-HS	North	East	Distance	Distance	Factor	
ft	ft	ft	ft	ft	ft	deg	ft	ft	ft	ft		
5100.00	4914.70	4816.65	4802.96	25.42	12.18	188.10	268.94	-193.02	1465.17	1440.18	58.63	
5200.00	5013.82	4914.48	4900.44	25.68	12.44	188.13	275.52	-198.19	1485.78	1460.39	58.52	
5300.00	5113.25	5015.72	5001.31	25.90	12.71	188.18	282.31	-203.54	1503.84	1478.07	58.35	
5400.00	5212.93	5145.15	5130.40	26.09	13.00	188.26	289.65	-209.30	1518.17	1492.02	58.04	
5500.00	5312.78	5275.67	5260.75	26.24	13.24	188.31	294.73	-213.30	1527.93	1501.43	57.67	
5600.00	5412.74	5406.86	5391.90	26.36	13.47	188.33	297.47	-215.46	1533.06	1506.26	57.20	
5700.00	5512.73	5527.70	5512.73	26.45	13.67	295.21	297.99	-215.87	1533.92	1495.77	40.21	
5800.00	5612.73	5627.70	5612.73	26.55	13.87	295.21	297.99	-215.87	1533.92	1495.46	39.89	
5900.00	5712.73	5727.70	5712.73	26.65	14.06	295.21	297.99	-215.87	1533.92	1495.15	39.57	
6000.00	5812.73	5827.70	5812.73	26.75	14.26	295.21	297.99	-215.87	1533.92	1494.84	39.25	
6100.00	5912.73	5927.70	5912.73	26.85	14.46	295.21	297.99	-215.87	1533.92	1494.53	38.94	
6200.00	6012.73	6027.70	6012.73	26.96	14.66	295.21	297.99	-215.87	1533.92	1494.22	38.63	
6300.00	6112.73	6127.70	6112.73	27.06	14.86	295.21	297.99	-215.87	1533.92	1493.90	38.33	
6400.00	6212.73	6227.70	6212.73	27.17	15.06	295.21	297.99	-215.87	1533.92	1493.58	38.03	
6500.00	6312.73	6327.70	6312.73	27.28	15.26	295.21	297.99	-215.87	1533.92	1493.26	37.73	
6600.00	6412.73	6427.70	6412.73	27.39	15.46	295.21	297.99	-215.87	1533.92	1492.94	37.43	
6700.00	6512.73	6527.70	6512.73	27.50	15.66	295.21	297.99	-215.87	1533.92	1492.61	37.13	
6800.00	6612.73	6627.70	6612.73	27.62	15.86	295.21	297.99	-215.87	1533.92	1492.28	36.84	
6900.00	6712.73	6727.70	6712.73	27.73	16.07	295.21	297.99	-215.87	1533.92	1491.95	36.55	
7000.00	6812.73	6827.70	6812.73	27.85	16.27	295.21	297.99	-215.87	1533.92	1491.62	36.27	
7100.00	6912.73	6927.70	6912.73	27.97	16.48	295.21	297.99	-215.87	1533.92	1491.29	35.98	
7200.00	7012.73	7027.70	7012.73	28.09	16.68	295.21	297.99	-215.87	1533.92	1490.96	35.70	
7300.00	7112.73	7127.70	7112.73	28.21	16.89	295.21	297.99	-215.87	1533.92	1490.62	35.43	
7400.00	7212.73	7227.70	7212.73	28.33	17.09	295.21	297.99	-215.87	1533.92	1490.28	35.15	
7500.00	7312.73	7327.70	7312.73	28.45	17.30	295.21	297.99	-215.87	1533.92	1489.94	34.88	
7600.00	7412.73	7427.70	7412.73	28.57	17.51	295.21	297.99	-215.87	1533.92	1489.60	34.61	
7700.00	7512.73	7527.70	7512.73	28.70	17.71	295.21	297.99	-215.87	1533.92	1489.26	34.35	
7800.00	7612.73	7627.70	7612.73	28.83	17.92	295.21	297.99	-215.87	1533.92	1488.92	34.08	
7900.00	7712.73	7643.97	7629.00	28.95	17.96	295.21	297.99	-215.87	1536.20	1491.03	34.01	
8000.00	7812.73	7643.97	7629.00	29.08	17.96	295.21	297.99	-215.87	1544.88	1499.57	34.10	
8100.00	7912.73	7643.97	7629.00	29.21	17.96	295.21	297.99	-215.87	1559.94	1514.49	34.32	
8200.00	8012.73	7643.97	7629.00	29.34	17.96	295.21	297.99	-215.87	1581.19	1535.60	34.69	
8300.00	8112.73	7643.97	7629.00	29.48	17.96	295.21	297.99	-215.87	1608.39	1562.66	35.17	
8400.00	8212.73	7643.97	7629.00	29.61	17.96	295.21	297.99	-215.87	1641.24	1595.37	35.78	

Site: GUCCINI 20-692 PAD
Well: GUCCINI 31D-20-692
Wellpath: 1 V0

Inter-Site Error: 0.00 ft

Reference		Offset		Semi-Major Axis			Offset Location		Ctr-Ctr	Edge	Separation	Warning
MD	TVD	MD	TVD	Ref	Offset	TFO-HS	North	East	Distance	Distance	Factor	
ft	ft	ft	ft	ft	ft	deg	ft	ft	ft	ft		
0.00	0.00	0.00	0.00	0.00	0.00	26.63	43.48	21.80	48.64			No Data
100.00	100.00	100.05	100.05	0.10	0.10	26.38	43.53	21.59	48.59	48.40	254.18	
200.00	200.00	200.07	200.07	0.32	0.32	25.62	43.70	20.96	48.47	47.83	75.63	
300.00	300.00	299.96	299.95	0.55	0.54	24.34	44.14	19.97	48.45	47.36	44.51	
400.00	400.00	399.94	399.92	0.77	0.76	22.80	44.78	18.82	48.58	47.05	31.86	
500.00	500.00	500.00	499.96	0.99	0.97	20.49	45.61	17.04	48.69	46.72	24.77	
600.00	600.00	600.01	599.92	1.22	1.20	16.65	46.74	13.98	48.79	46.37	20.18	
700.00	700.00	699.74	699.53	1.44	1.43	11.09	48.38	9.49	49.30	46.43	17.14	
800.00	800.00	799.32	798.92	1.67	1.67	4.09	50.67	3.63	50.81	47.47	15.21	
900.00	900.00	899.49	898.87	1.89	1.89	357.26	52.90	-2.53	52.98	49.19	14.00	
1000.00	999.98	999.68	998.91	2.12	2.09	243.64	54.44	-7.55	55.74	51.54	13.28	

Weatherford International, Inc.

Anticollision Report



Company: BILL BARRETT CORP	Date: 2/22/2007	Time: 16:55:28	Page: 5
Field: GARFIELD COUNTY, CO (NAD 27)			
Reference Site: GUCCINI 20-692 PAD	Co-ordinate(NE) Reference: Well: GUCCINI 41A-20-692, True North		
Reference Well: GUCCINI 41A-20-692	Vertical (TVD) Reference: SITE 5577.5		
Reference Wellpath: 1	Db: Sybase		

Site: GUCCINI 20-692 PAD
Well: GUCCINI 31D-20-692
Wellpath: 1 VO

Inter-Site Error: 0.00 ft

Reference		Offset		Semi-Major Axis			Offset Location		Ctr-Ctr		Edge		Separation		Warning
MD	TVD	MD	TVD	Ref	Offset	TFO-HS	North	East	Distance	Distance	Factor	Factor	Factor	Factor	
ft	ft	ft	ft	ft	ft	deg	ft	ft	ft	ft					
1100.00	1099.78	1101.14	1100.33	2.35	2.28	239.72	52.53	-5.57	56.36	51.74			12.21		
1200.00	1199.23	1198.86	1198.04	2.59	2.49	232.92	53.34	-4.45	62.66	57.61			12.41		
1300.00	1298.12	1295.11	1294.22	2.86	2.70	225.02	56.80	-4.95	75.94	70.46			13.85		
1400.00	1396.28	1389.52	1388.42	3.17	2.92	217.97	62.64	-7.43	96.97	91.05			16.37		
1500.00	1493.50	1481.07	1479.51	3.54	3.15	212.88	70.87	-11.32	125.67	119.31			19.75		
1600.00	1589.62	1570.04	1567.72	3.98	3.39	209.41	81.25	-16.41	161.48	154.67			23.70		
1700.00	1684.49	1656.79	1653.38	4.51	3.63	207.13	93.73	-21.95	203.38	196.09			27.90		
1800.00	1778.96	1742.29	1737.42	5.08	3.90	205.74	108.53	-27.25	248.16	240.35			31.78		
1900.00	1873.44	1824.90	1818.22	5.69	4.18	205.13	124.93	-32.50	294.62	286.27			35.31		
2000.00	1967.91	1904.60	1895.61	6.31	4.48	205.01	143.14	-37.93	343.16	334.25			38.55		
2100.00	2062.38	1984.36	1972.54	6.94	4.82	205.08	163.28	-44.17	393.73	384.24			41.50		
2200.00	2156.85	2067.94	2052.91	7.59	5.19	205.20	185.12	-51.05	445.11	435.01			44.03		
2300.00	2251.32	2152.84	2134.46	8.25	5.59	205.32	207.62	-58.18	496.82	486.07			46.20		
2400.00	2345.80	2237.53	2215.79	8.91	6.00	205.42	230.16	-65.33	548.62	537.21			48.08		
2500.00	2440.27	2320.98	2295.87	9.57	6.41	205.50	252.51	-72.50	600.63	588.55			49.76		
2600.00	2534.74	2404.42	2375.86	10.24	6.84	205.57	275.07	-79.90	652.96	640.22			51.25		
2700.00	2629.21	2488.94	2456.86	10.92	7.28	205.64	298.00	-87.49	705.41	691.99			52.55		
2800.00	2723.69	2571.37	2535.81	11.59	7.72	205.69	320.46	-95.03	758.05	743.95			53.75		
2900.00	2818.16	2652.75	2613.69	12.27	8.15	205.73	342.77	-102.75	811.01	796.23			54.86		
3000.00	2912.63	2738.39	2695.57	12.95	8.60	205.75	366.38	-111.25	864.35	848.87			55.84		
3100.00	3007.10	2836.30	2789.51	13.64	9.08	205.78	392.53	-120.05	916.53	900.32			56.53		
3200.00	3101.58	2916.33	2866.31	14.32	9.48	205.80	413.94	-127.06	968.63	951.75			57.37		
3300.00	3196.05	2995.56	2942.20	15.00	9.89	205.83	435.54	-134.22	1021.21	1003.65			58.15		
3400.00	3290.52	3076.95	3020.01	15.69	10.34	205.88	458.15	-141.84	1074.29	1056.03			58.82		
3500.00	3384.99	3177.48	3116.38	16.38	10.85	205.89	485.24	-151.01	1126.73	1107.71			59.24		
3600.00	3479.46	3271.58	3206.83	17.06	11.28	205.89	509.90	-159.08	1178.39	1158.66			59.72		
3700.00	3573.94	3377.20	3308.69	17.75	11.76	205.88	536.60	-167.38	1229.04	1208.56			60.00		
3800.00	3668.41	3491.13	3419.19	18.44	12.26	205.80	563.06	-175.58	1278.04	1256.80			60.17		
3900.00	3762.88	3606.87	3532.06	19.13	12.73	205.68	587.73	-182.57	1325.12	1303.13			60.26		
4000.00	3857.35	3720.11	3643.05	19.82	13.17	205.51	609.27	-188.79	1370.49	1347.78			60.34		
4100.00	3951.83	3831.99	3753.18	20.51	13.56	205.26	628.03	-194.76	1414.44	1391.04			60.46		
4200.00	4046.30	3958.29	3878.04	21.20	13.97	204.95	646.31	-200.11	1456.18	1432.09			60.44		
4300.00	4140.77	4065.16	3983.99	21.90	14.29	204.63	659.52	-204.50	1496.71	1471.99			60.54		
4400.00	4235.26	4193.84	4111.89	22.57	14.64	204.17	672.88	-209.15	1535.76	1510.42			60.60		
4500.00	4330.31	4315.09	4232.72	23.09	14.92	203.54	682.42	-212.56	1571.24	1545.38			60.76		
4600.00	4426.14	4439.19	4356.61	23.57	15.17	202.93	688.87	-215.41	1602.46	1576.12			60.83		
4700.00	4522.69	4543.13	4460.45	24.02	15.35	202.44	692.81	-217.66	1630.54	1603.78			60.93		
4800.00	4619.89	4644.04	4561.29	24.43	15.53	202.00	695.75	-220.03	1655.95	1628.77			60.94		
4900.00	4717.66	4741.71	4658.90	24.80	15.69	201.59	697.60	-222.92	1678.88	1651.38			61.05		
5000.00	4815.96	4844.43	4761.56	25.13	15.86	201.21	699.18	-226.10	1699.39	1671.54			61.02		
5100.00	4914.70	4949.23	4866.31	25.42	16.02	200.89	700.63	-228.96	1717.13	1688.94			60.92		
5200.00	5013.82	5053.38	4970.42	25.68	16.19	200.62	701.76	-231.59	1732.14	1703.64			60.77		
5300.00	5113.25	5153.01	5070.02	25.90	16.34	200.41	702.80	-233.91	1744.56	1715.77			60.58		
5400.00	5212.93	5253.77	5170.74	26.09	16.50	200.25	703.76	-236.27	1754.51	1725.45			60.36		
5500.00	5312.78	5358.48	5275.42	26.24	16.66	200.11	704.34	-238.87	1761.89	1732.53			60.01		
5600.00	5412.74	5462.17	5379.09	26.36	16.82	200.02	704.65	-241.16	1766.45	1736.86			59.70		
5700.00	5512.73	5564.53	5481.42	26.45	16.98	306.84	704.76	-243.49	1768.72	1732.04			48.21		
5800.00	5612.73	5672.09	5588.95	26.55	17.13	306.77	704.13	-246.07	1770.30	1733.25			47.79		
5900.00	5712.73	5783.68	5700.50	26.65	17.29	306.69	702.81	-248.48	1771.32	1734.00			47.46		
6000.00	5812.73	5891.85	5808.64	26.75	17.43	306.60	700.89	-250.45	1771.72	1734.07			47.06		
6100.00	5912.73	5998.79	5915.54	26.85	17.57	306.51	698.65	-252.22	1771.80	1733.92			46.77		

Weatherford International, Inc.

Anticollision Report



Company: BILL BARRETT CORP	Date: 2/22/2007	Time: 16:55:28	Page: 6
Field: GARFIELD COUNTY, CO (NAD 27)			
Reference Site: GUCCINI 20-692 PAD	Co-ordinate(NE) Reference:	Well: GUCCINI 41A-20-692, True North	
Reference Well: GUCCINI 41A-20-692	Vertical (TVD) Reference:	SITE 5577.5	
Reference Wellpath: 1	Db: Sybase		

Site: GUCCINI 20-692 PAD
Well: GUCCINI 31D-20-692
Wellpath: 1 V0

Inter-Site Error: 0.00 ft

Reference		Offset		Semi-Major Axis			Offset Location		Ctr-Ctr	Edge	Separation	Warning
MD	TVD	MD	TVD	Ref	Offset	TFO-HS	North	East	Distance	Distance	Factor	
ft	ft	ft	ft	ft	ft	deg	ft	ft	ft	ft		
6200.00	6012.73	6107.90	6024.57	26.96	17.70	306.37	695.05	-254.30	1771.38	1733.13	46.31	
6300.00	6112.73	6203.75	6120.35	27.06	17.82	306.26	691.95	-255.84	1770.76	1732.22	45.95	
6400.00	6212.73	6305.94	6222.52	27.17	17.95	306.19	689.84	-256.84	1770.33	1731.45	45.54	
6500.00	6312.73	6411.73	6328.28	27.28	18.09	306.12	687.65	-257.50	1769.62	1730.45	45.18	
6600.00	6412.73	6499.17	6415.71	27.39	18.21	306.07	686.14	-258.02	1769.08	1729.73	44.96	
6700.00	6512.73	6598.42	6514.94	27.50	18.35	306.03	685.00	-258.73	1768.97	1729.21	44.48	
6800.00	6612.73	6699.26	6615.77	27.62	18.50	305.96	683.31	-259.77	1768.82	1728.74	44.13	
6900.00	6712.73	6809.12	6725.58	27.73	18.64	305.86	680.47	-261.22	1768.38	1728.12	43.93	
7000.00	6812.73	6918.98	6835.34	27.85	18.78	305.72	676.18	-262.95	1767.37	1726.68	43.43	
7100.00	6912.73	7053.36	6969.56	27.97	18.94	305.52	669.71	-264.05	1765.27	1724.17	42.95	
7200.00	7012.73	7145.35	7061.44	28.09	19.05	305.41	665.33	-263.79	1762.27	1720.87	42.56	
7300.00	7112.73	7237.48	7153.47	28.21	19.15	305.29	660.94	-264.05	1759.74	1718.02	42.18	
7400.00	7212.73	7342.90	7258.78	28.33	19.28	305.16	656.15	-264.25	1757.27	1715.21	41.78	
7500.00	7312.73	7430.86	7346.69	28.45	19.39	305.09	653.16	-263.78	1754.90	1711.93	40.84	
7600.00	7412.73	7528.25	7444.06	28.57	19.53	305.08	651.87	-262.63	1753.16	1710.41	41.01	
7700.00	7512.73	7631.98	7547.76	28.70	19.69	305.05	650.13	-261.44	1751.26	1708.25	40.72	
7800.00	7612.73	7669.00	7584.78	28.83	19.74	305.04	649.38	-261.05	1750.39	1707.17	40.50	
7900.00	7712.73	7669.00	7584.78	28.95	19.74	305.04	649.38	-261.05	1754.84	1711.47	40.47	
8000.00	7812.73	7669.00	7584.78	29.08	19.74	305.04	649.38	-261.05	1764.95	1721.44	40.56	
8100.00	7912.73	7669.00	7584.78	29.21	19.74	305.04	649.38	-261.05	1780.63	1736.97	40.79	
8200.00	8012.73	7669.00	7584.78	29.34	19.74	305.04	649.38	-261.05	1801.73	1757.92	41.13	
8300.00	8112.73	7669.00	7584.78	29.48	19.74	305.04	649.38	-261.05	1828.07	1784.11	41.59	
8400.00	8212.73	7669.00	7584.78	29.61	19.74	305.04	649.38	-261.05	1859.41	1815.31	42.16	

Site: GUCCINI 20-692 PAD
Well: GUCCINI 41C-20-692
Wellpath: 1 V0 Plan: Plan #2 V1

Inter-Site Error: 0.00 ft

Reference		Offset		Semi-Major Axis			Offset Location		Ctr-Ctr	Edge	Separation	Warning
MD	TVD	MD	TVD	Ref	Offset	TFO-HS	North	East	Distance	Distance	Factor	
ft	ft	ft	ft	ft	ft	deg	ft	ft	ft	ft		
0.00	0.00	0.00	0.00	0.00	0.00	27.14	28.48	14.60	32.00			No Data
100.00	100.00	100.00	100.00	0.10	0.10	27.14	28.48	14.60	32.00	31.81	167.52	
200.00	200.00	200.00	200.00	0.32	0.32	27.14	28.48	14.60	32.00	31.36	49.96	
300.00	300.00	300.00	300.00	0.55	0.55	27.14	28.48	14.60	32.00	30.91	29.36	
400.00	400.00	400.00	400.00	0.77	0.77	27.14	28.48	14.60	32.00	30.46	20.79	
500.00	500.00	500.00	500.00	0.99	0.99	27.14	28.48	14.60	32.00	30.02	16.09	
600.00	600.00	600.00	600.00	1.22	1.22	27.14	28.48	14.60	32.00	29.57	13.12	
700.00	700.00	700.00	700.00	1.44	1.44	27.14	28.48	14.60	32.00	29.12	11.08	
800.00	800.00	800.00	800.00	1.67	1.67	27.14	28.48	14.60	32.00	28.67	9.59	
900.00	900.00	900.00	900.00	1.89	1.89	27.14	28.48	14.60	32.00	28.22	8.45	
1000.00	999.98	999.24	999.22	2.12	2.12	279.34	28.82	16.11	32.70	28.46	7.72	
1100.00	1099.78	1098.29	1098.09	2.35	2.34	277.01	30.11	21.74	35.41	30.72	7.55	
1200.00	1199.23	1197.22	1196.50	2.59	2.58	273.96	32.34	31.52	40.26	35.10	7.79	
1300.00	1298.12	1295.95	1294.19	2.86	2.84	270.85	35.50	45.40	47.31	41.63	8.32	
1400.00	1396.28	1394.41	1390.92	3.17	3.13	268.08	39.59	63.31	56.60	50.31	9.01	
1500.00	1493.50	1492.55	1486.46	3.54	3.48	265.81	44.57	85.18	68.10	61.12	9.75	
1600.00	1589.62	1590.30	1580.57	3.98	3.89	264.04	50.44	110.90	81.79	73.98	10.46	
1700.00	1684.49	1688.21	1673.73	4.51	4.38	262.48	57.13	140.25	97.49	88.69	11.08	
1800.00	1778.96	1786.84	1767.36	5.08	4.91	260.85	64.03	170.50	113.70	103.82	11.51	
1900.00	1873.44	1885.47	1860.98	5.69	5.46	259.63	70.93	200.75	129.98	118.97	11.81	
2000.00	1967.91	1984.11	1954.61	6.31	6.04	258.69	77.83	231.00	146.30	134.13	12.02	
2100.00	2062.38	2082.74	2048.24	6.94	6.62	257.93	84.73	261.25	162.65	149.29	12.17	

Weatherford International, Inc.

Anticollision Report



Company:	BILL BARRETT CORP	Date:	2/22/2007	Time:	16:55:28	Page:	7
Field:	GARFIELD COUNTY, CO (NAD 27)	Co-ordinate(NE) Reference:	Well: GUCCINI 41A-20-692, True North				
Reference Site:	GUCCINI 20-692 PAD	Vertical (TVD) Reference:	SITE 5577.5				
Reference Well:	GUCCINI 41A-20-692						
Reference Wellpath:	1	Db: Sybase					

Site: GUCCINI 20-692 PAD
Well: GUCCINI 41C-20-692
Wellpath: 1 V0 Plan: Plan #2 V1

Inter-Site Error: 0.00 ft

Reference		Offset		Semi-Major Axis			Offset Location		Ctr-Ctr	Edge	Separation	Warning
MD	TVD	MD	TVD	Ref	Offset	TFO-HS	North	East	Distance	Distance	Factor	
ft	ft	ft	ft	ft	ft	deg	ft	ft	ft	ft		
2200.00	2156.85	2181.37	2141.86	7.59	7.22	257.31	91.63	291.50	179.03	164.45	12.28	
2300.00	2251.32	2280.01	2235.49	8.25	7.83	256.79	98.52	321.75	195.42	179.61	12.36	
2400.00	2345.80	2378.64	2329.11	8.91	8.44	256.36	105.42	352.00	211.83	194.78	12.43	
2500.00	2440.27	2477.27	2422.74	9.57	9.06	255.99	112.32	382.26	228.24	209.95	12.48	
2600.00	2534.74	2575.91	2516.37	10.24	9.68	255.66	119.22	412.51	244.66	225.11	12.51	
2700.00	2629.21	2674.54	2609.99	10.92	10.30	255.38	126.12	442.76	261.09	240.28	12.54	
2800.00	2723.69	2773.17	2703.62	11.59	10.93	255.13	133.02	473.01	277.53	255.44	12.57	
2900.00	2818.16	2871.81	2797.24	12.27	11.56	254.91	139.92	503.26	293.97	270.61	12.59	
3000.00	2912.63	2970.44	2890.87	12.95	12.19	254.71	146.81	533.51	310.41	285.78	12.60	
3100.00	3007.10	3069.07	2984.50	13.64	12.83	254.54	153.71	563.76	326.86	300.95	12.61	
3200.00	3101.58	3167.71	3078.12	14.32	13.46	254.38	160.61	594.02	343.31	316.11	12.62	
3300.00	3196.05	3266.34	3171.75	15.00	14.10	254.23	167.51	624.27	359.76	331.28	12.63	
3400.00	3290.52	3364.97	3265.37	15.69	14.73	254.10	174.41	654.52	376.22	346.45	12.64	
3500.00	3384.99	3463.61	3359.00	16.38	15.37	253.97	181.31	684.77	392.67	361.62	12.64	
3600.00	3479.46	3562.24	3452.63	17.06	16.01	253.86	188.21	715.02	409.13	376.78	12.65	
3700.00	3573.94	3660.87	3546.25	17.75	16.65	253.76	195.11	745.27	425.59	391.95	12.65	
3800.00	3668.41	3759.51	3639.88	18.44	17.29	253.66	202.00	775.52	442.05	407.12	12.65	
3900.00	3762.88	3858.14	3733.50	19.13	17.93	253.57	208.90	805.77	458.51	422.29	12.66	
4000.00	3857.35	3956.78	3827.13	19.82	18.57	253.49	215.80	836.03	474.97	437.45	12.66	
4100.00	3951.83	4055.41	3920.75	20.51	19.21	253.41	222.70	866.28	491.44	452.62	12.66	
4200.00	4046.30	4154.04	4014.38	21.20	19.85	253.34	229.60	896.53	507.90	467.79	12.66	
4300.00	4140.77	4252.68	4108.01	21.90	20.50	253.27	236.50	926.78	524.37	482.96	12.66	
4400.00	4235.26	4351.31	4201.64	22.57	21.14	253.17	243.40	957.03	540.82	498.13	12.67	
4500.00	4330.31	4450.02	4295.33	23.09	21.78	253.06	250.30	987.31	556.76	512.94	12.71	
4600.00	4426.14	4551.84	4392.38	23.57	22.32	253.09	257.15	1017.33	571.71	526.89	12.76	
4700.00	4522.69	4654.07	4490.61	24.02	22.80	253.13	263.44	1044.92	585.37	539.66	12.81	
4800.00	4619.89	4756.60	4589.86	24.43	23.24	253.16	269.16	1070.02	597.73	551.20	12.85	
4900.00	4717.66	4859.42	4690.04	24.80	23.64	253.19	274.30	1092.56	608.79	561.51	12.88	
5000.00	4815.96	4962.50	4791.06	25.13	24.01	253.23	278.85	1112.52	618.52	570.56	12.90	
5100.00	4914.70	5065.81	4892.83	25.42	24.34	253.27	282.81	1129.85	626.93	578.36	12.91	
5200.00	5013.82	5169.33	4995.25	25.68	24.63	253.31	286.15	1144.51	633.99	584.89	12.91	
5300.00	5113.25	5273.01	5098.20	25.90	24.88	253.36	288.88	1156.48	639.71	590.15	12.91	
5400.00	5212.93	5376.84	5201.59	26.09	25.10	253.41	290.99	1165.74	644.07	594.12	12.89	
5500.00	5312.78	5480.78	5305.30	26.24	25.27	253.47	292.48	1172.25	647.07	596.80	12.87	
5600.00	5412.74	5584.79	5409.24	26.36	25.41	253.53	293.33	1176.01	648.71	598.18	12.84	
5700.00	5512.73	5688.29	5512.73	26.45	25.52	0.45	293.57	1177.04	649.06	620.55	22.77	
5800.00	5612.73	5788.29	5612.73	26.55	25.62	0.45	293.57	1177.04	649.06	620.20	22.49	
5900.00	5712.73	5888.29	5712.73	26.65	25.72	0.45	293.57	1177.04	649.06	619.84	22.22	
6000.00	5812.73	5988.29	5812.73	26.75	25.83	0.45	293.57	1177.04	649.06	619.48	21.95	
6100.00	5912.73	6088.29	5912.73	26.85	25.93	0.45	293.57	1177.04	649.06	619.12	21.68	
6200.00	6012.73	6188.29	6012.73	26.96	26.04	0.45	293.57	1177.04	649.06	618.76	21.42	
6300.00	6112.73	6288.29	6112.73	27.06	26.15	0.45	293.57	1177.04	649.06	618.39	21.17	
6400.00	6212.73	6388.29	6212.73	27.17	26.26	0.45	293.57	1177.04	649.06	618.03	20.92	
6500.00	6312.73	6488.29	6312.73	27.28	26.37	0.45	293.57	1177.04	649.06	617.66	20.67	
6600.00	6412.73	6588.29	6412.73	27.39	26.48	0.45	293.57	1177.04	649.06	617.28	20.43	
6700.00	6512.73	6688.29	6512.73	27.50	26.59	0.45	293.57	1177.04	649.06	616.91	20.19	
6800.00	6612.73	6788.29	6612.73	27.62	26.71	0.45	293.57	1177.04	649.06	616.53	19.96	
6900.00	6712.73	6888.29	6712.73	27.73	26.83	0.45	293.57	1177.04	649.06	616.16	19.73	
7000.00	6812.73	6988.29	6812.73	27.85	26.94	0.45	293.57	1177.04	649.06	615.78	19.50	
7100.00	6912.73	7088.29	6912.73	27.97	27.06	0.45	293.57	1177.04	649.06	615.40	19.28	
7200.00	7012.73	7188.29	7012.73	28.09	27.19	0.45	293.57	1177.04	649.06	615.01	19.07	

Weatherford International, Inc.

Anticollision Report



Company: BILL BARRETT CORP	Date: 2/22/2007	Time: 16:55:28	Page: 8
Field: GARFIELD COUNTY, CO (NAD 27)			
Reference Site: GUCCINI 20-692 PAD	Co-ordinate(NE) Reference: Well: GUCCINI 41A-20-692, True North		
Reference Well: GUCCINI 41A-20-692	Vertical (TVD) Reference: SITE 5577.5		
Reference Wellpath: 1	Db: Sybase		

Site: GUCCINI 20-692 PAD
Well: GUCCINI 41C-20-692
Wellpath: 1 V0 Plan: Plan #2 V1

Inter-Site Error: 0.00 ft

Reference		Offset		Semi-Major Axis			Offset Location		Ctr-Ctr Distance ft	Edge Distance ft	Separation Factor	Warning
MD ft	TVD ft	MD ft	TVD ft	Ref ft	Offset ft	TFO-HS deg	North ft	East ft				
7300.00	7112.73	7288.29	7112.73	28.21	27.31	0.45	293.57	1177.04	649.06	614.63	18.85	
7400.00	7212.73	7388.29	7212.73	28.33	27.43	0.45	293.57	1177.04	649.06	614.24	18.64	
7500.00	7312.73	7488.29	7312.73	28.45	27.56	0.45	293.57	1177.04	649.06	613.86	18.44	
7600.00	7412.73	7588.29	7412.73	28.57	27.68	0.45	293.57	1177.04	649.06	613.47	18.24	
7700.00	7512.73	7688.29	7512.73	28.70	27.81	0.45	293.57	1177.04	649.06	613.08	18.04	
7800.00	7612.73	7788.29	7612.73	28.83	27.94	0.45	293.57	1177.04	649.06	612.68	17.84	
7900.00	7712.73	7888.29	7712.73	28.95	28.07	0.45	293.57	1177.04	649.06	612.29	17.65	
8000.00	7812.73	7988.29	7812.73	29.08	28.20	0.45	293.57	1177.04	649.06	611.90	17.47	
8100.00	7912.73	8088.29	7912.73	29.21	28.33	0.45	293.57	1177.04	649.06	611.50	17.28	
8200.00	8012.73	8188.29	8012.73	29.34	28.47	0.45	293.57	1177.04	649.06	611.10	17.10	
8300.00	8112.73	8288.29	8112.73	29.48	28.60	0.45	293.57	1177.04	649.06	610.71	16.92	
8400.00	8212.73	8388.29	8212.73	29.61	28.74	0.45	293.57	1177.04	649.06	610.31	16.75	