

BLANCO

Geological Services LLC

Scale 1:240 (5"=100') Imperial

Well Name: Grey Goose 33-30
Location: NW/SE Sec 30 T32S R67W
Licence Number: 05-071-08546-00
Spud Date: 10/31/05
Surface Coordinates: 2136' FSL 2065' FEL

Las Animas County
Region: Purgatoire River
Drilling Completed: 11/02/05

Bottom Hole Coordinates:

Ground Elevation (ft): 7800' K.B. Elevation (ft): 7804'
Logged Interval (ft): 375' To: 2995' Total Depth (ft): 2995'
Formation: Poison Canyon / Raton / Vermejo / Trinidad
Type of Drilling Fluid: Air / Mist

Printed by STRIP.LOG from WellSight Systems 1-800-447-1534 www.WellSight.com

OPERATOR

Company: Pioneer Natural Resources USA, Inc.
Address: 1401 17th Street Suite 1200
Denver CO 80202

GEOLOGIST

Name: Bob Wick / Teresa Rensink
Company: BLANCO Geological Services LLC
Address: PO Box 865
Trinidad CO 81082
(719) 846-3364

Rig

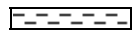



Pense Rig #17





Comments

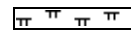

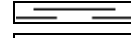
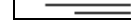
8 5/8" #24 Surface Casing set to 363.90'

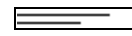

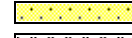
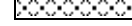
ROCK TYPES

 Anhy
 Bent
 Brec
 Cht

 Clyst
 Coal
 Congl
 Dol

 Gyp
 Igne
 Lmst
 Meta

 Mrlst
 Salt
 Shale
 Shcol

 Shgy
 Sltst
 Ss
 Till

ACCESSORIES

MINERAL

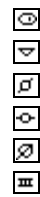
Anhy
 Arggrn
 Arg
 Bent
 Bit
 Breclrag
 Calc
 Carb
 Chtdk
 Chtlt
 Dol
 Feldspar
 Ferrpel
 Ferr
 Glau



Gyp
 Hvymin
 Kaol
 Marl
 Minxl
 Nodule
 Phos
 Pyr
 Salt
 Sandy
 Silt
 Sil
 Sulphur
 Tuff

FOSSIL

Algae
 Amph
 Belm
 Bioclst
 Brach
 Bryozoa
 Cephal
 Coral
 Crin
 Echin
 Fish
 Foram
 Fossil
 Gastro
 Oolite



Ostra
 Pelec
 Pellet
 Pisolite
 Plant
 Strom

STRINGER

Anhy
 Arg
 Bent
 Coal
 Dol
 Gyp
 Ls
 Mrst

Sltstrg
 Ssstrg

TEXTURE

Boundst
 Chalky
 Cryxln
 Earthy
 Finexln
 Grainst
 Lithogr
 Microxln
 Mudst
 Packst
 Wackest

OTHER SYMBOLS

POROSITY TYPE

Earthy
 Fenest
 Fracture
 Inter
 Moldic
 Organic
 Pinpoint



Vuggy

SORTING

Well
 Moderate
 Poor

ROUNDING

Rounded
 Subrnd
 Subang
 Angular



Spotted



Ques



Dead

INTERVALS

Core
 Dst
 Srfcsg



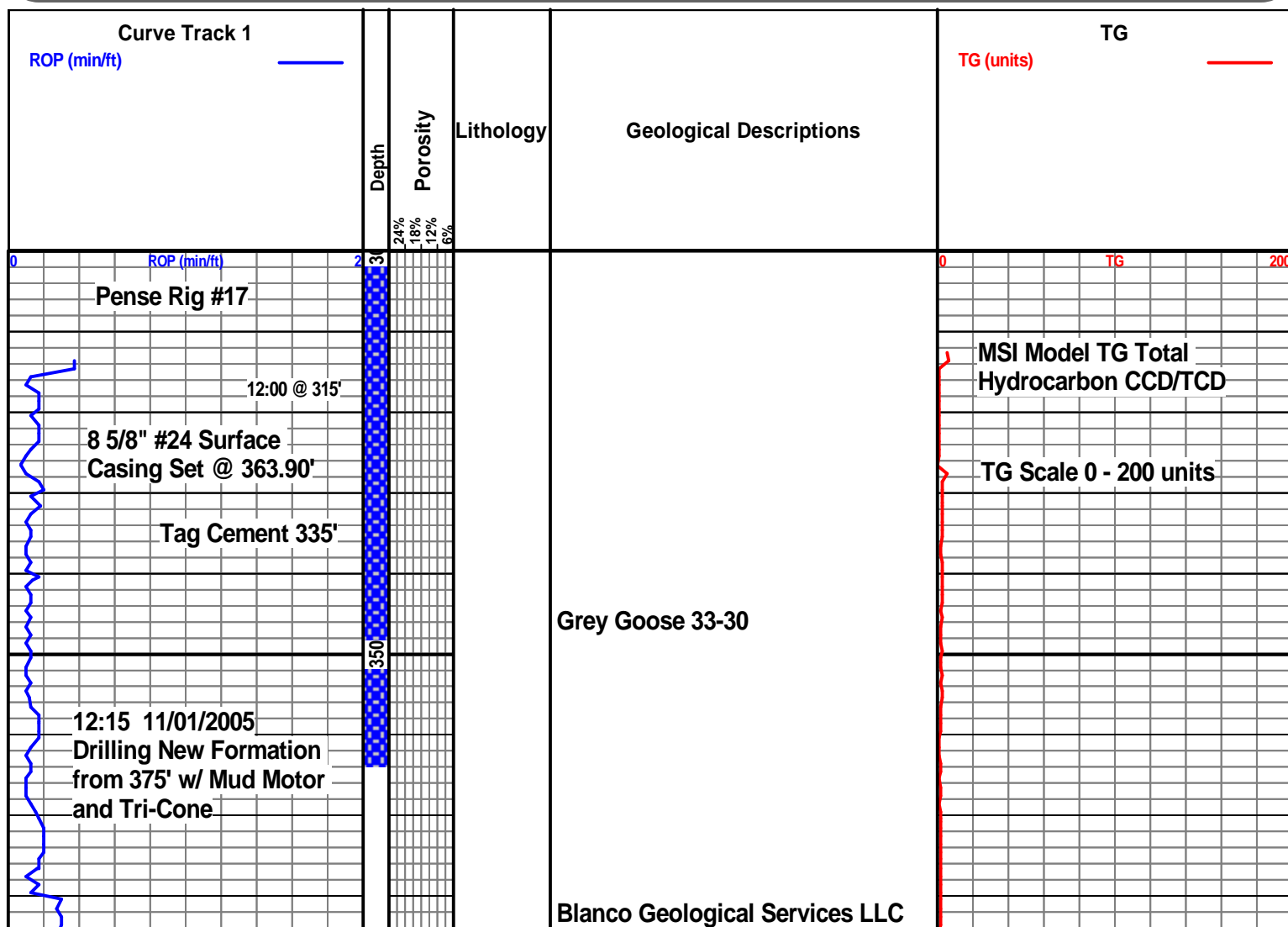
Cv-v

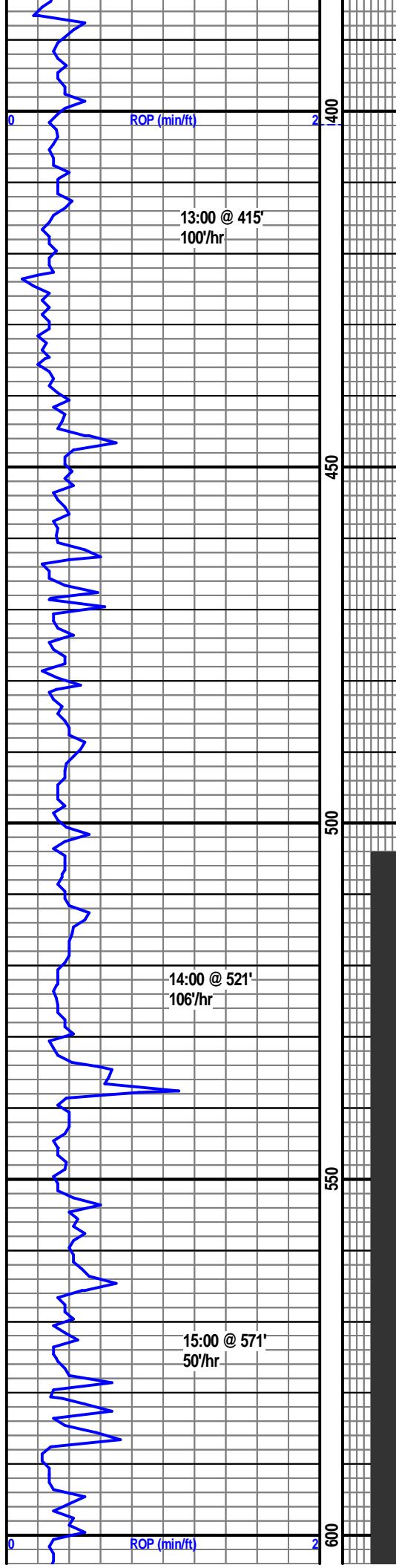


Cv-c

EVENTS

Rft
 Sidewall
 Srfcsg





Logging Unit Operational
11:30 11/01/2005

Began Sampling @ 505'

Poison Canyon Formation

SANDSTONE, milky-clear lt-gray, fg-mg, sub angular - sub rounded, well sorted, mod consolidated, SHALE stringers, gray

SANDSTONE, gray clear, vfg, sub angular - sub rounded, well sorted, well consolidated

SANDSTONE, milky-clear, mg-cg, angular - sub angular, mod sorted, poorly - un consolidated

SANDSTONE, blue-gray orange, vfg-fg, sub angular - sub rounded, mod sorted, well consolidated

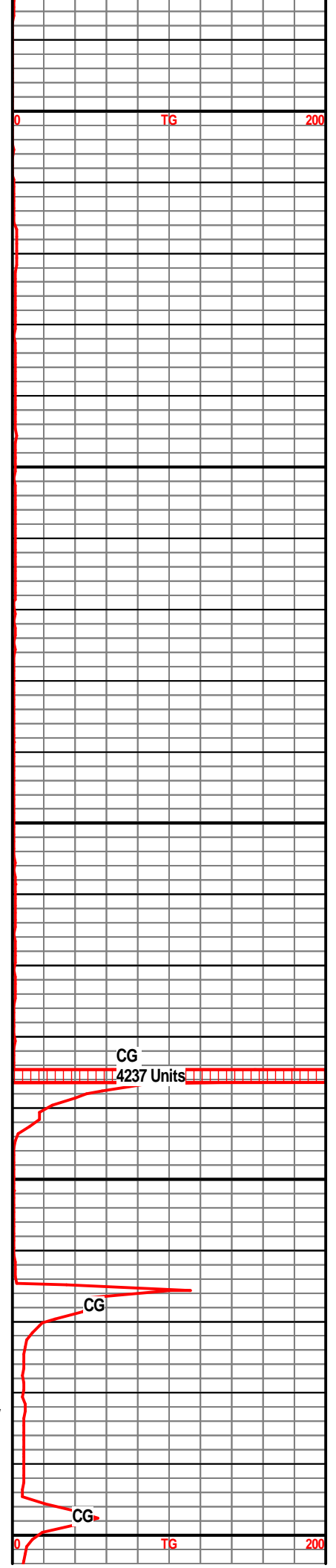
SANDSTONE, milky-gray brown, vfg - fg, sub angular - sub rounded, mod sorted, mod consolidated

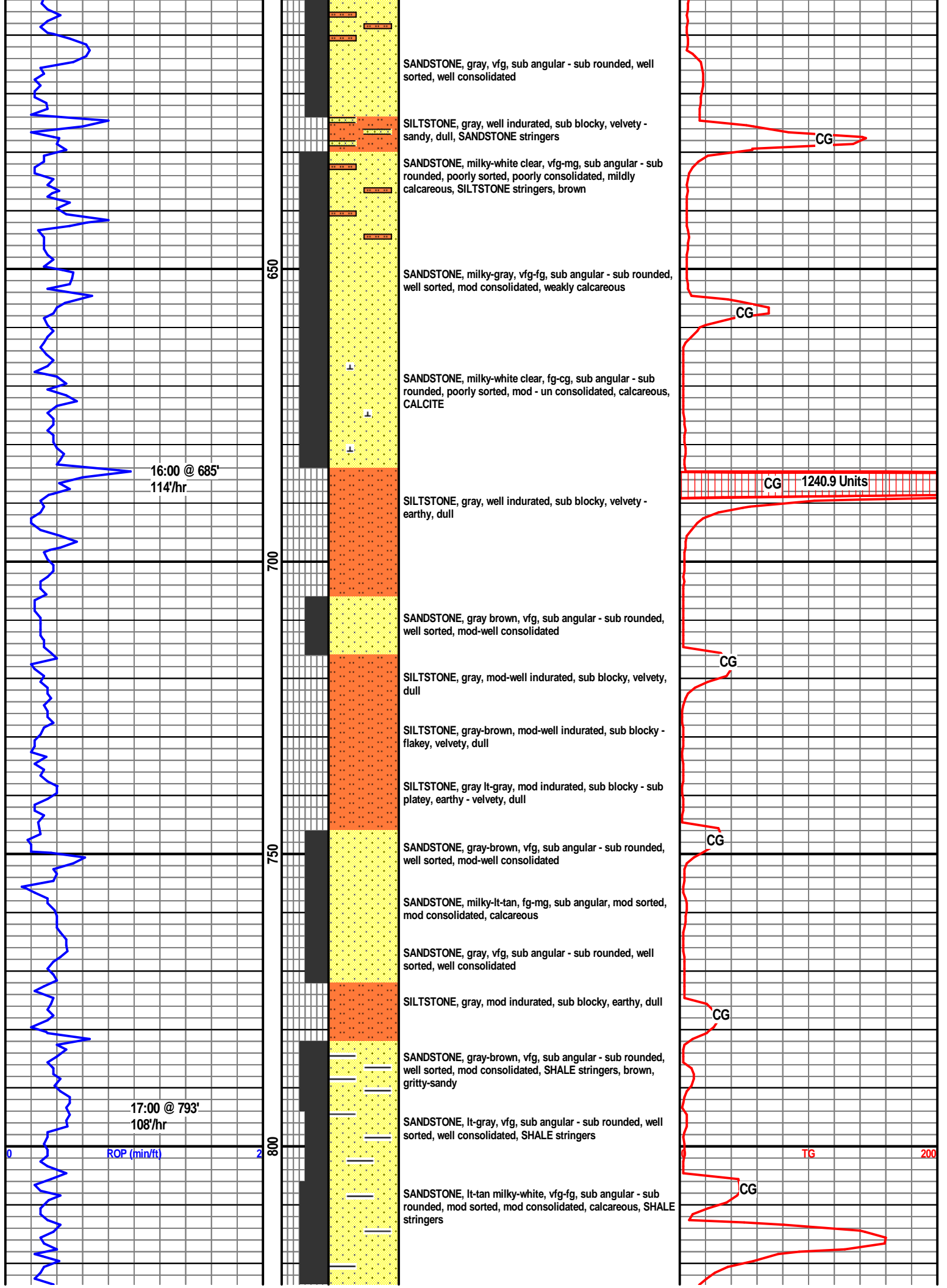
SANDSTONE, gray, vfg, sub angular - sub rounded, well sorted, well consolidated

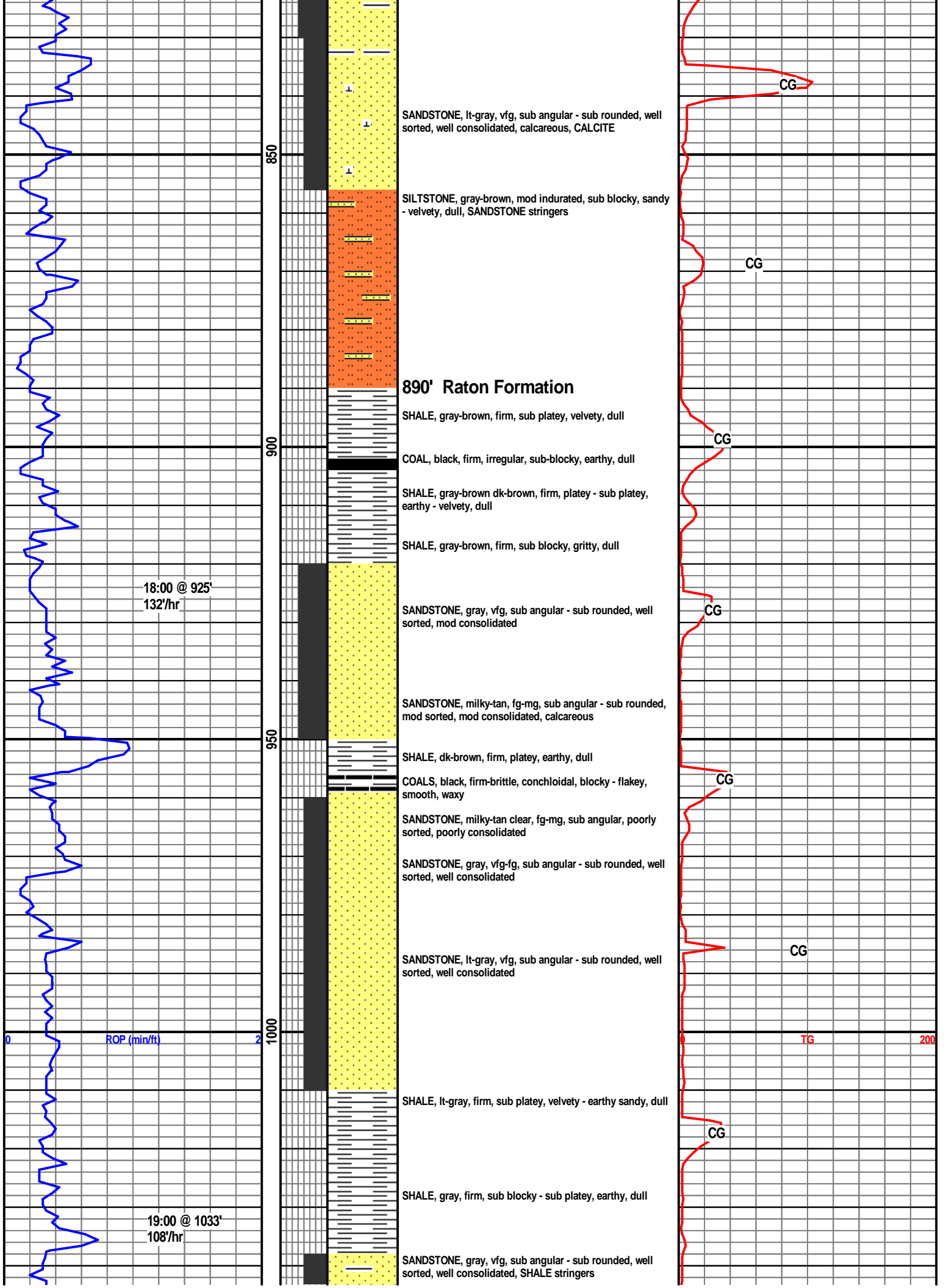
SANDSTONE, lt-gray, vfg, sub angular - sub rounded, well sorted, mod-well consolidated

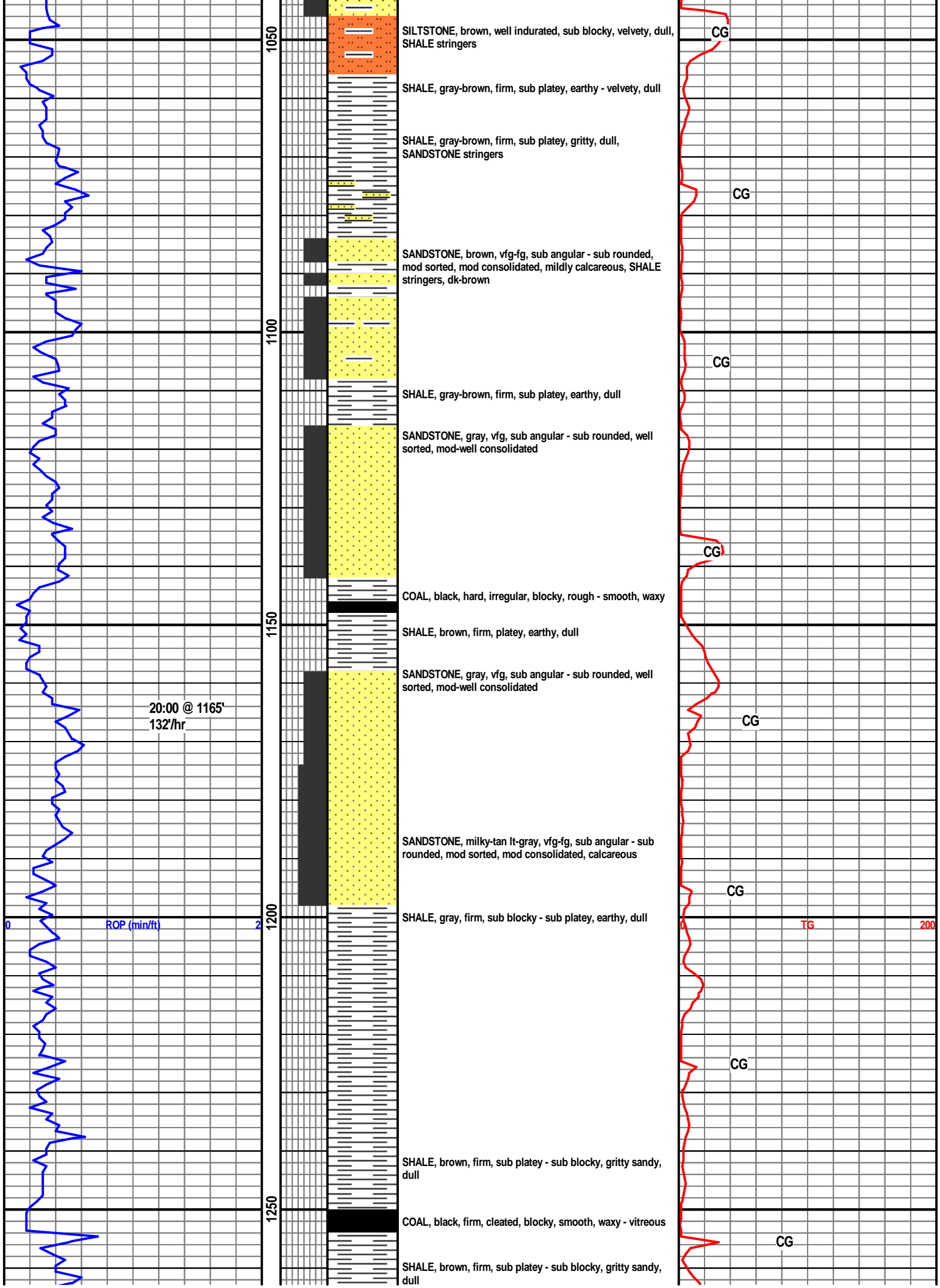
SANDSTONE, blue-gray brown milky-white, vfg - mg, poorly sorted, poorly consolidated, SHALE stringers

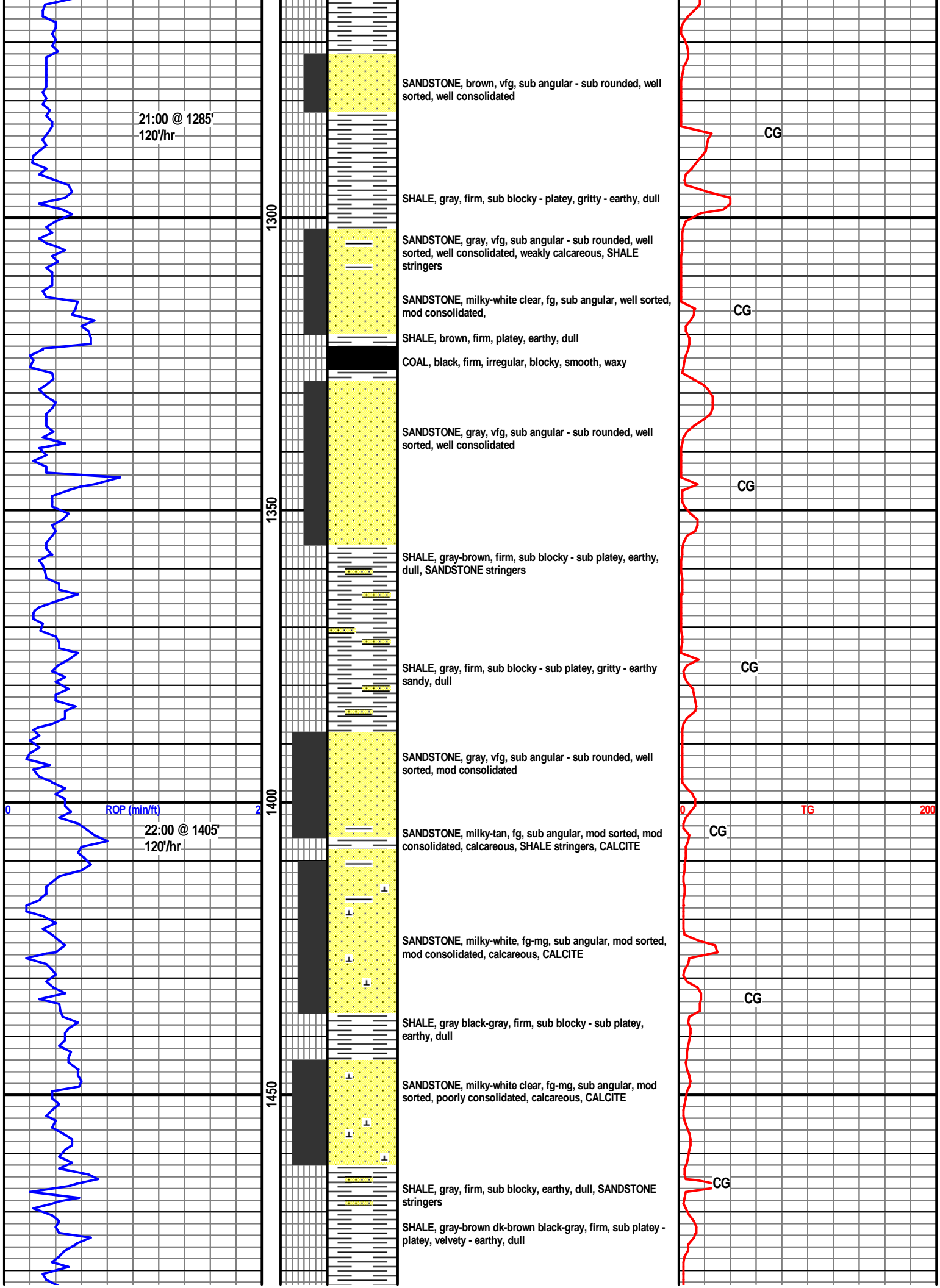
SANDSTONE, blue-gray brown, vfg, sub angular - sub rounded, well sorted, well consolidated, SILTSTONE stringers

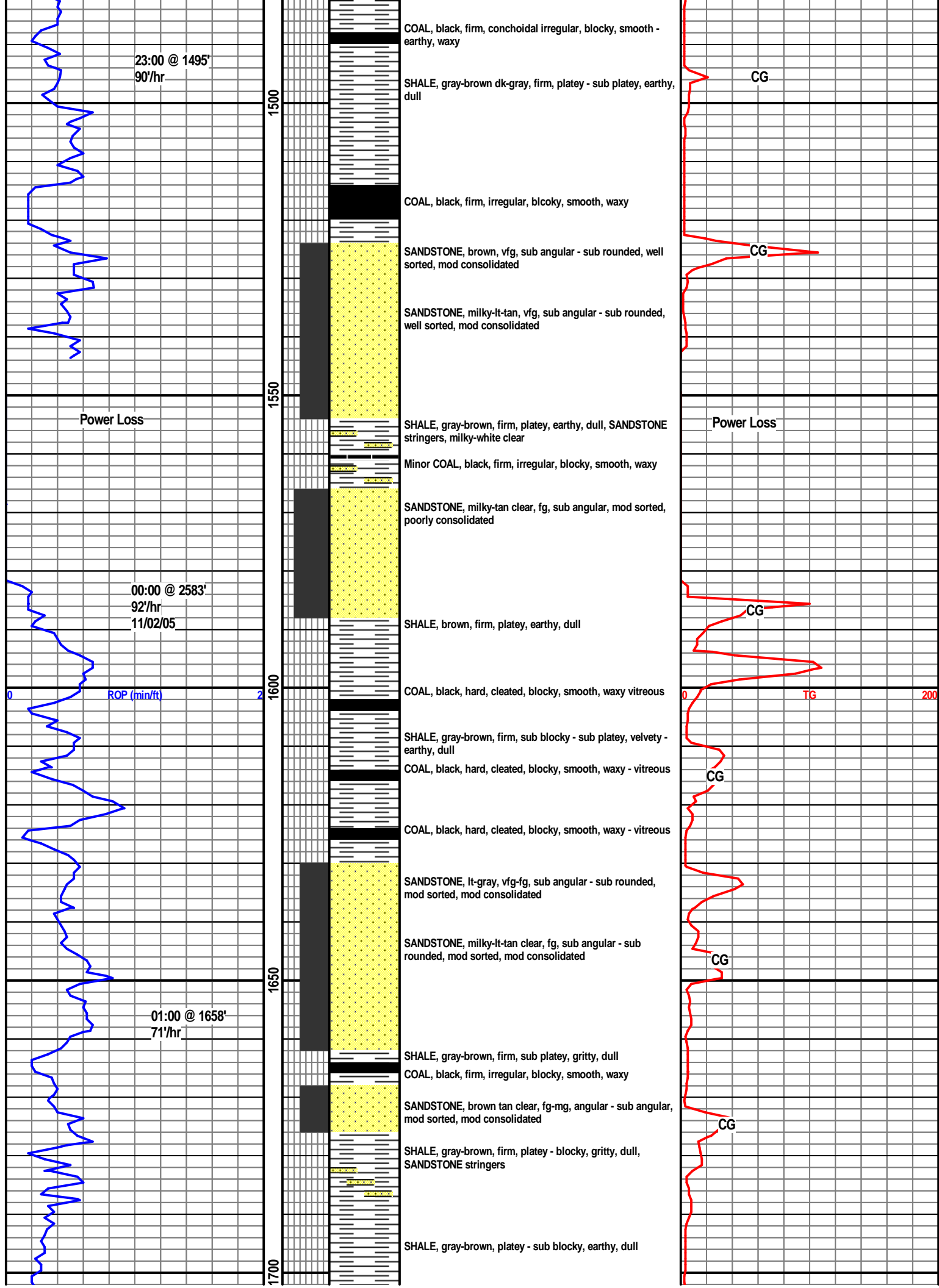


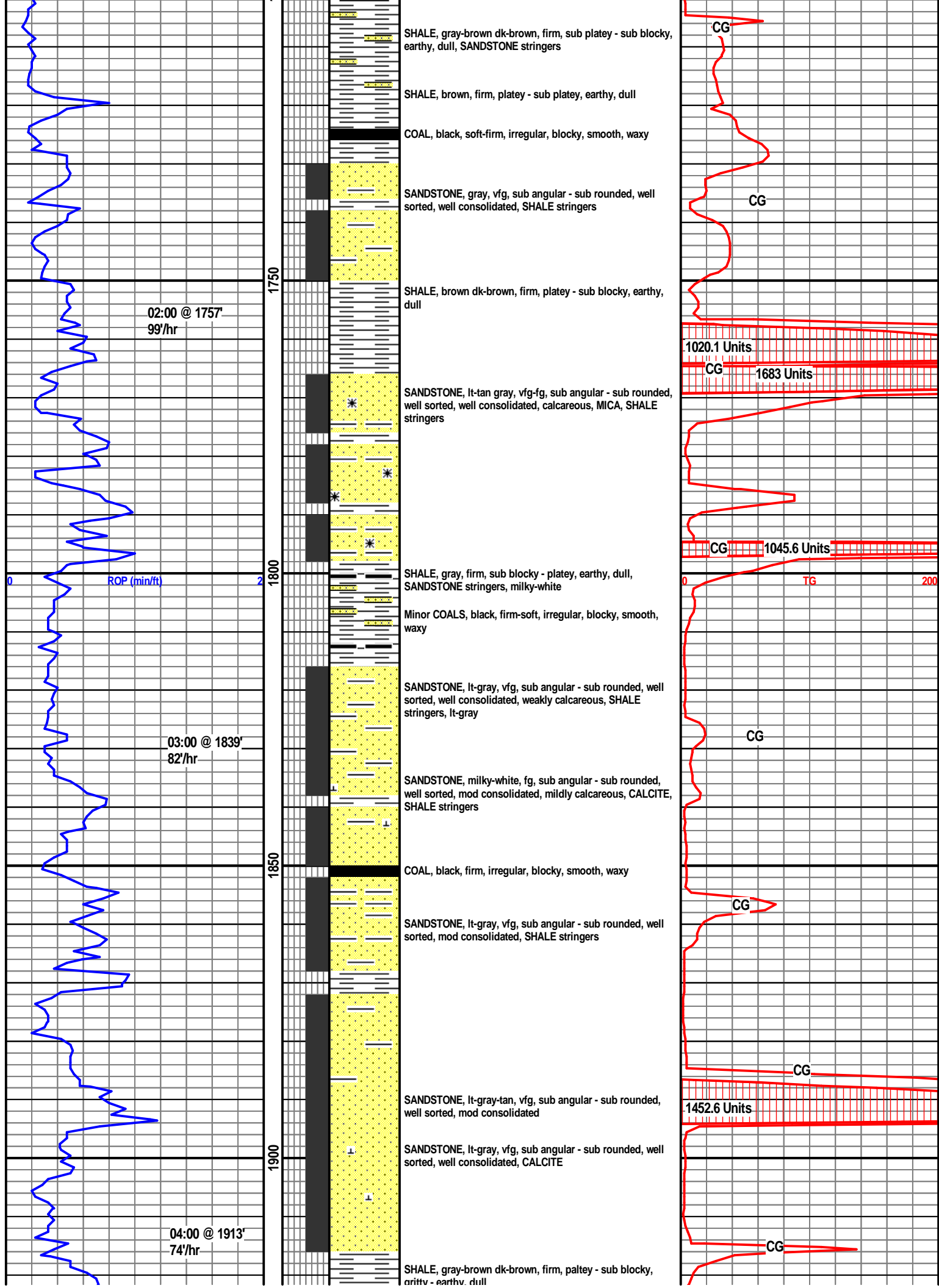


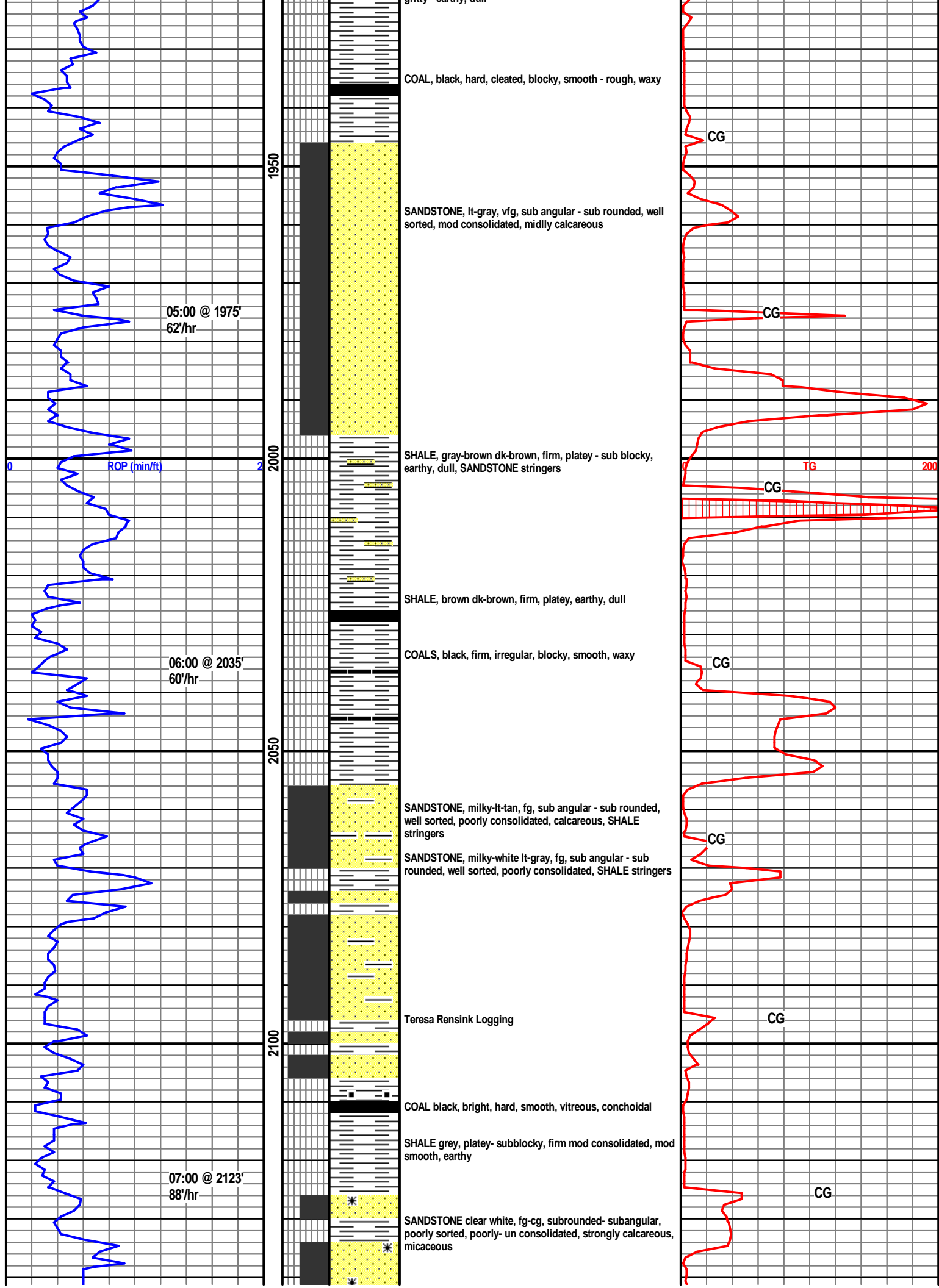


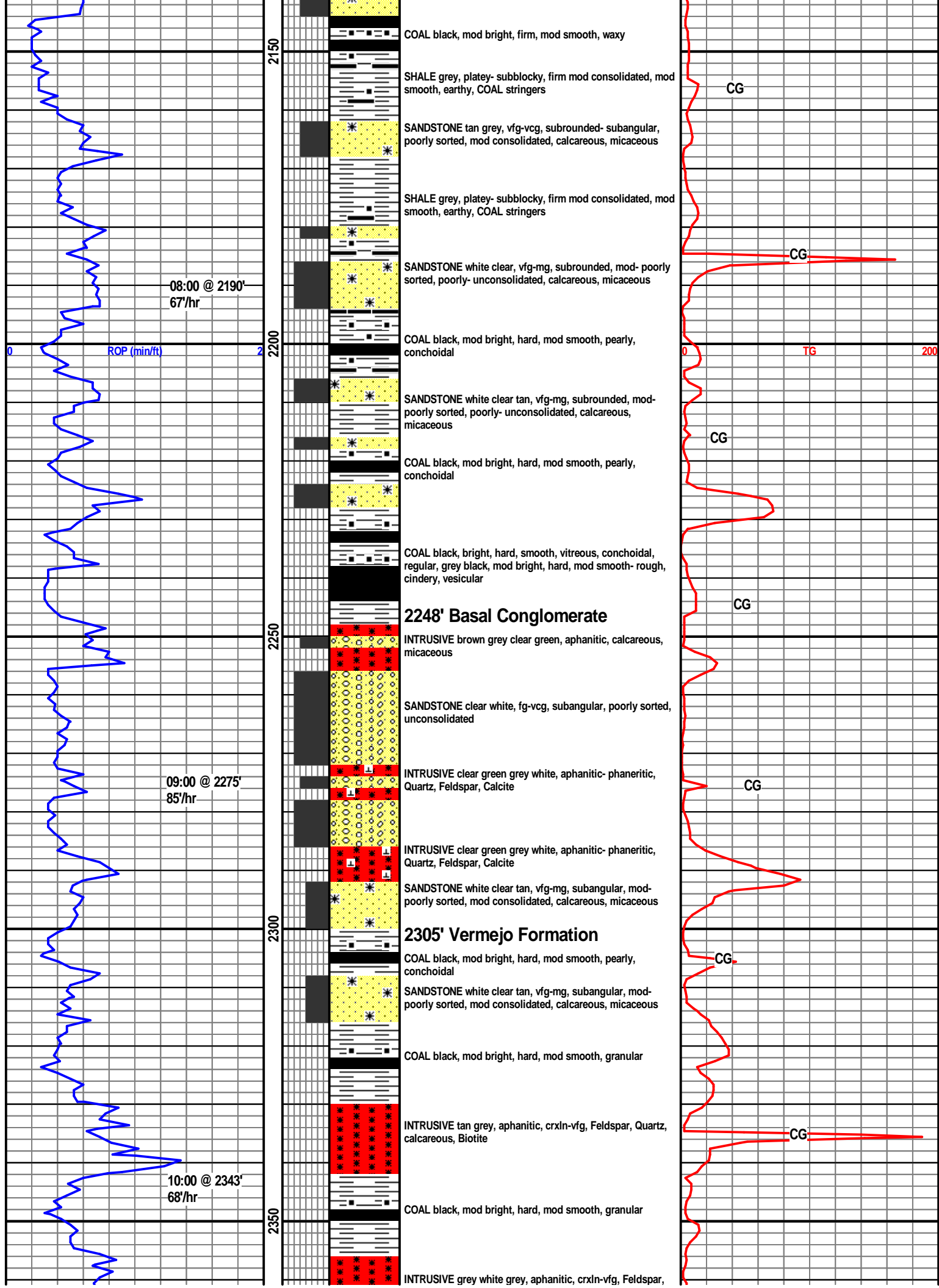


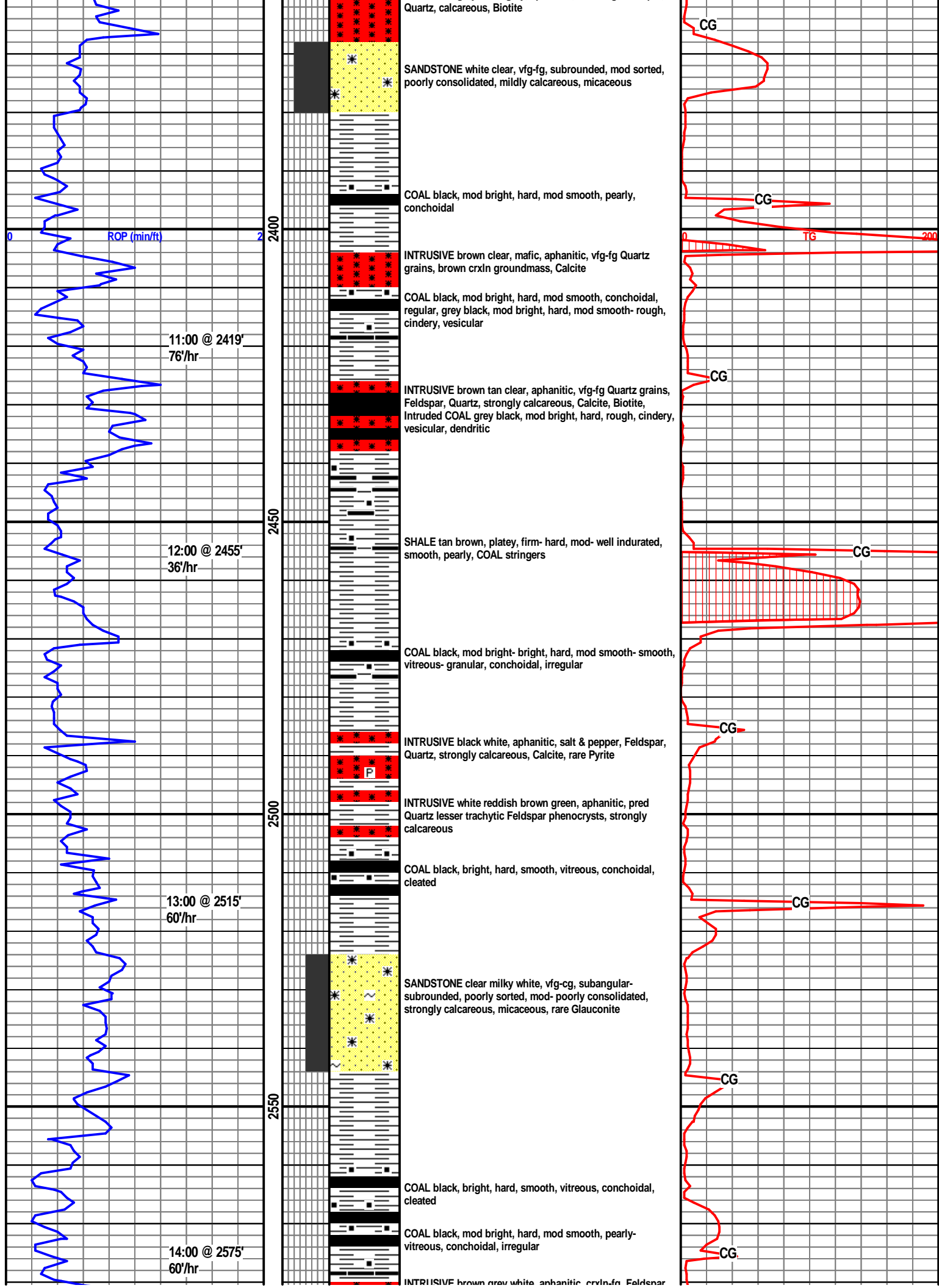


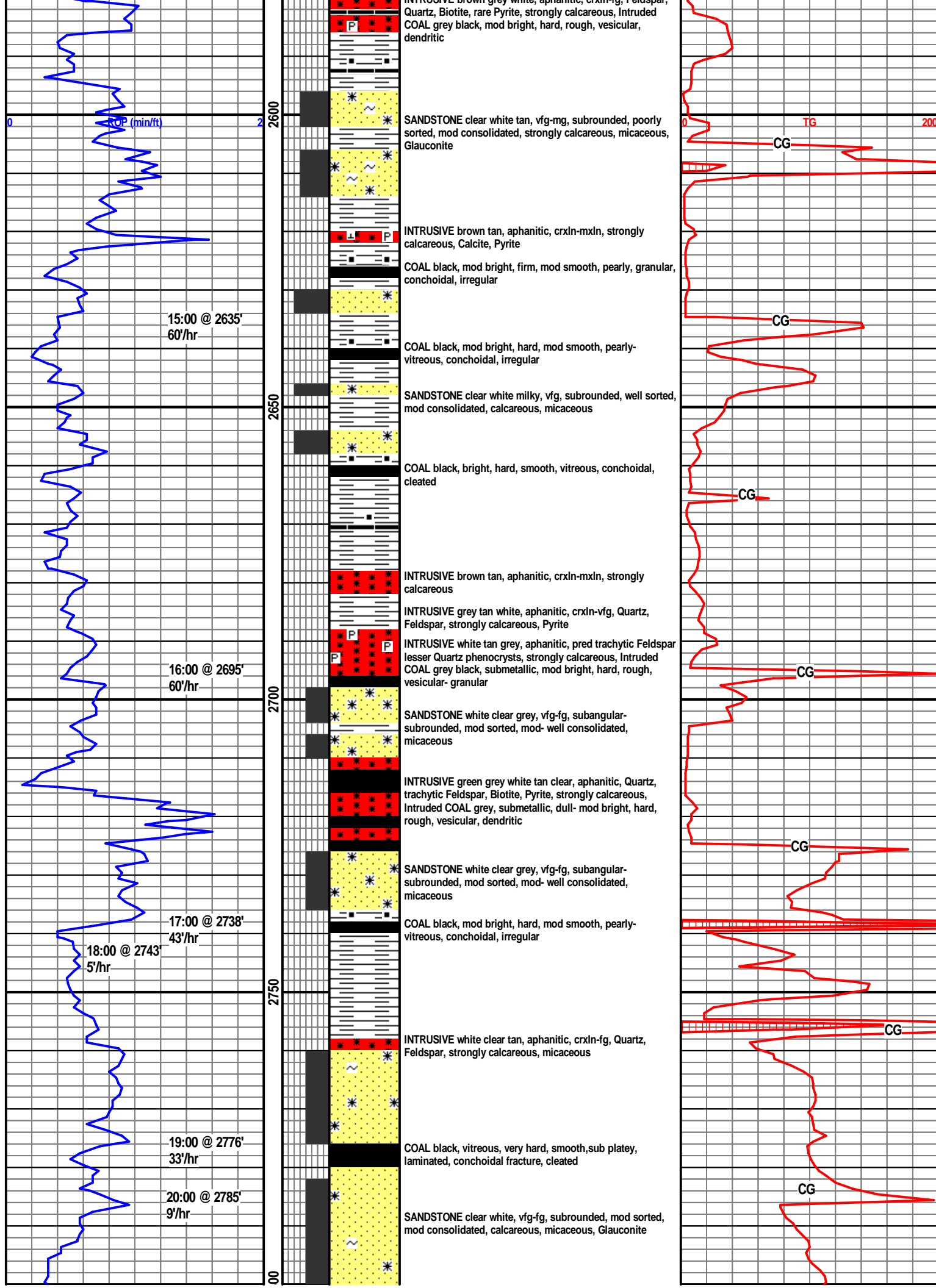


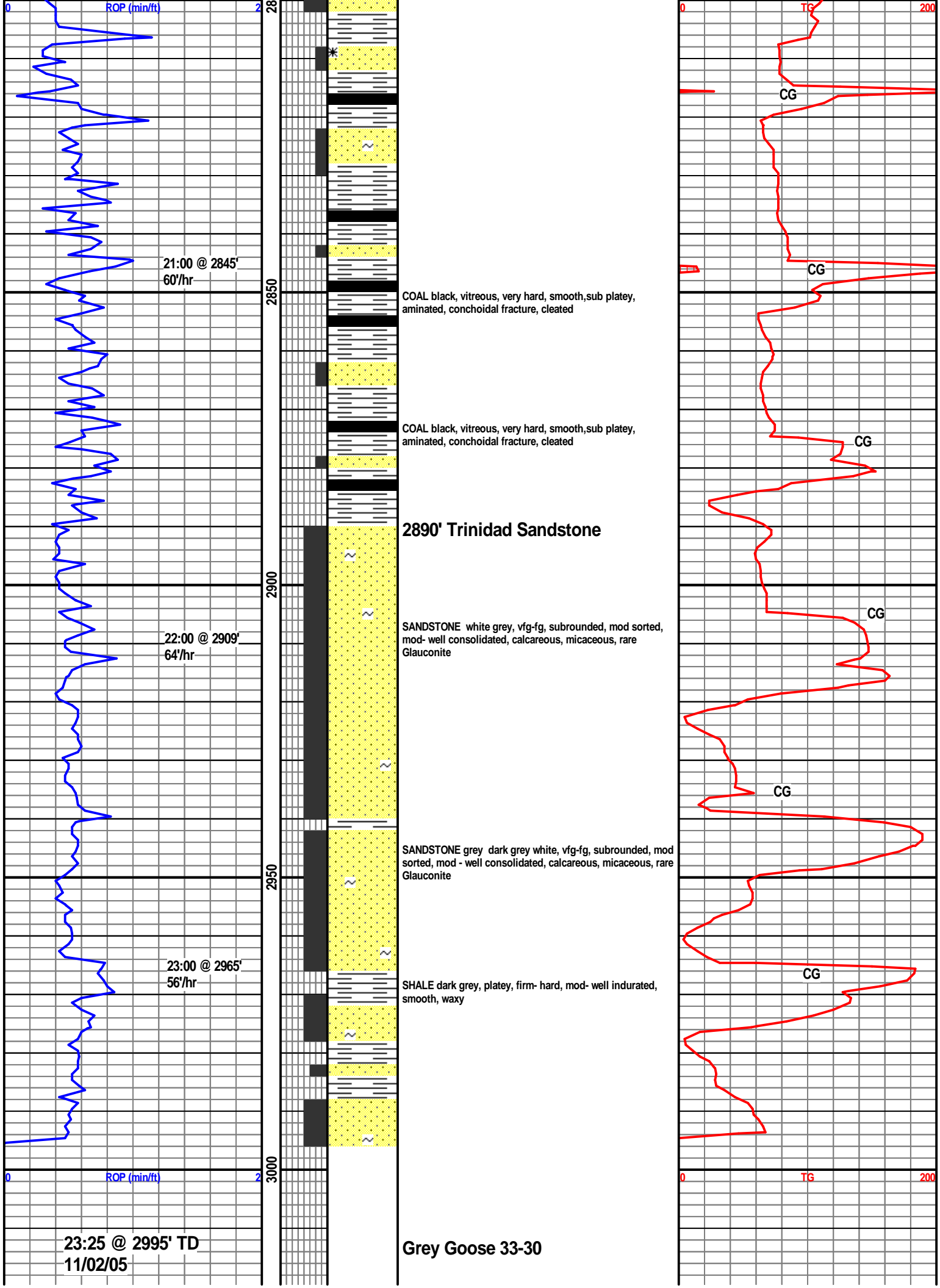












[illegible]