

Patterson

DUAL
INDUCTION
LOG

Company		XTO Energy Inc.	
Well		Golden Eagle 20-03	
Field		Purgatoire River	
County		Las Animas	
State		Colorado	
Location:		API # : 05 071 08734 00	
SEC 20 TWP 33S RGE 67W		644' FNL & 2654' FEL	
Permanent Datum		Ground Level	Elevation 7757'
Log Measured From		Ground Level	
Drilling Measured From		Ground Level	
Other Services		CDL NEUTRON	
Elevation		K.B. ----- D.F. ----- G.L. 7757'	
Date	3-18-06		
Run Number	One		
Depth Driller	2550'		
Depth Logger	2532'		
Bottom Logged Interval	2530'		
Top Log Interval	Surface		
Casing Driller	8 5/8" @ 906'		
Casing Logger	908'		
Bit Size	7 7/8"		
Type Fluid in Hole	Water		
Density / Viscosity	///		
pH / Fluid Loss	///		
Source of Sample	///		
Rm @ Meas. Temp	///		
Rmf @ Meas. Temp	///		
Rmc @ Meas. Temp	///		
Source of Rmf / Rmc	///		
Rm @ BHT	///		
Time Circulation Stopped	1:30 A.M.		
Time Logger on Bottom	4:15 A.M.		
Maximum Recorded Temperature	109 DEG F		
Equipment Number	T720		
Location	Trinidad		
Recorded By	M. Norton		
Witnessed By	Mr. Don Johnson		

<<< Fold Here >>>

All interpretations are opinions based on inferences from electrical or other measurements and we cannot and do not guarantee the accuracy or correctness of any interpretation, and we shall not, except in the case of gross or willful negligence on our part, be liable or responsible for any loss, costs, damages, or expenses incurred or sustained by anyone resulting from any interpretation made by any of our officers, agents or employees. These interpretations are also subject to our general terms and conditions set out in our current Price Schedule.

Comments

Well Directions:
Hwy 12 Four Miles Past Weston Turn Right(Missy Chavez Place), Thru Gate,
At T Stay Right, At Top of Hill Stay Left, First Right To Location.

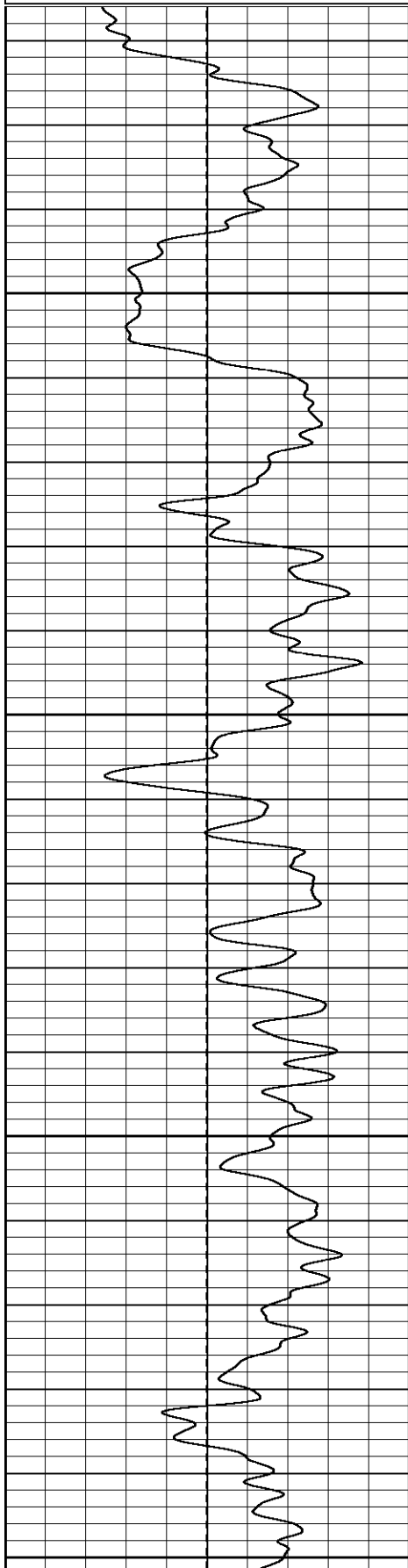
Patterson

Main Pass

Database File: xtoge2003.db
Dataset Pathname: pass2.1
Presentation Format: dil
Dataset Creation: Sat Mar 18 06:45:55 2006 by Calc Warrior 7.0 STD Ope
Charted by: Depth in Feet scaled 1:240

0	GR (GAPI)	200
-100	SP (mV)	100

0.2	RILM (Ohm-m)	2000
0.2	RILD (Ohm-m)	2000
0.2	RLL3 (Ohm-m)	2000

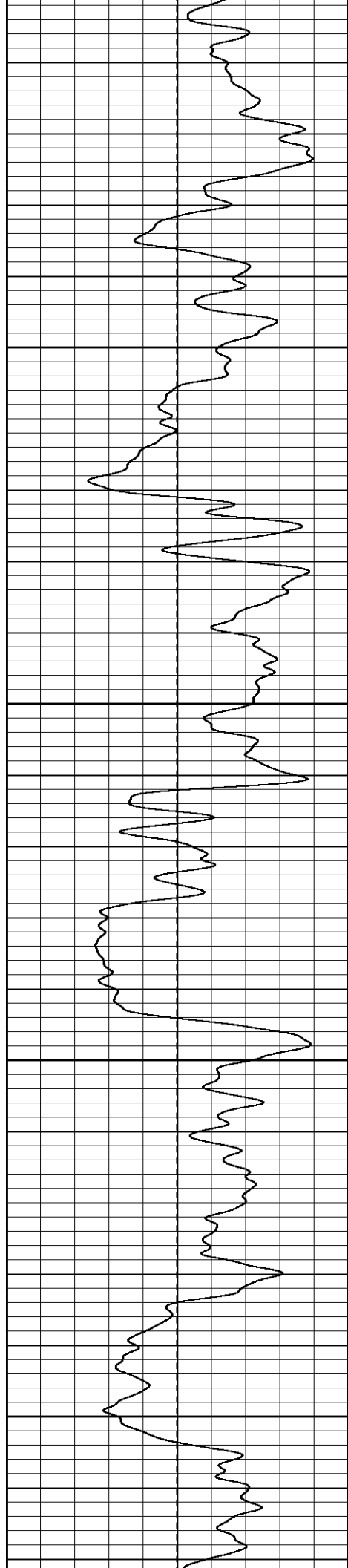


50

100

150

200

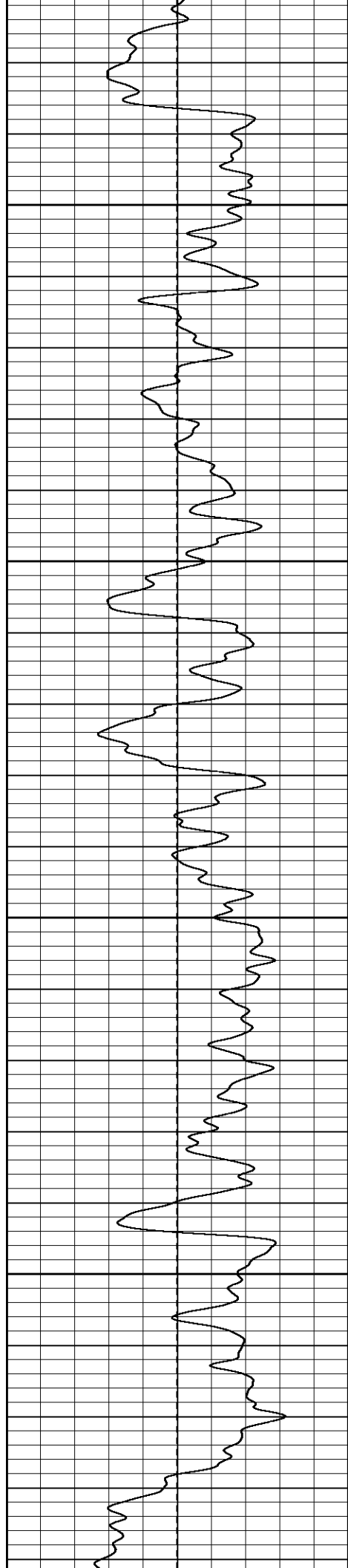


250

300

350

400

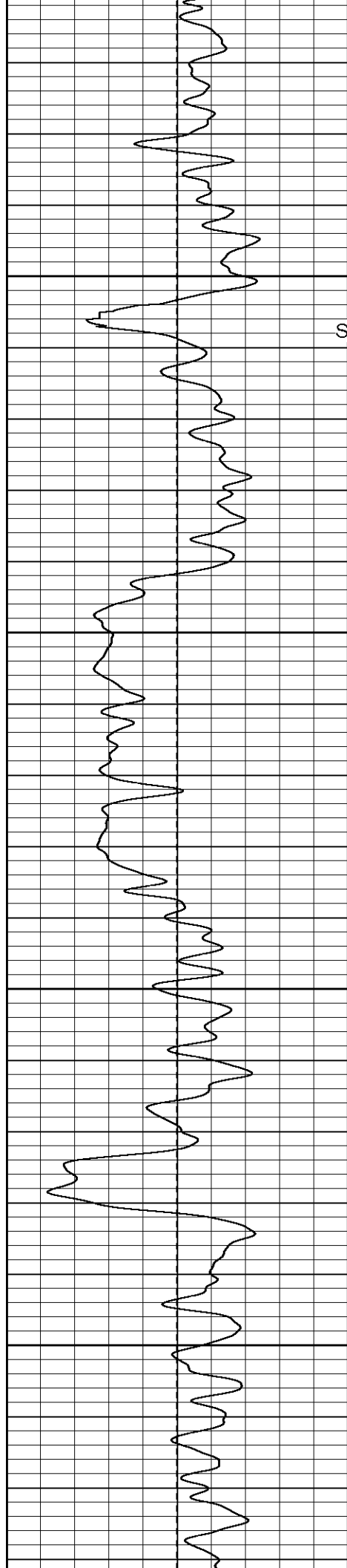


450

500

550

600

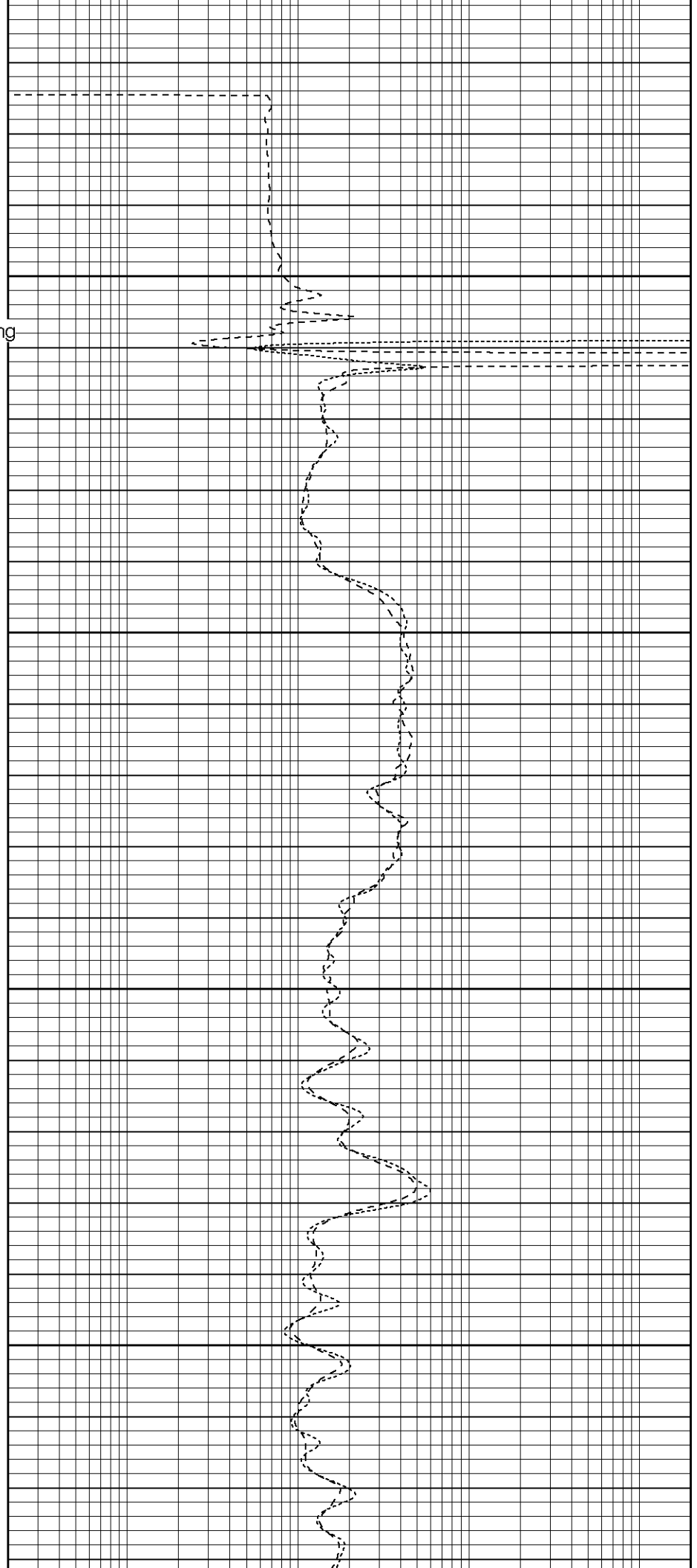


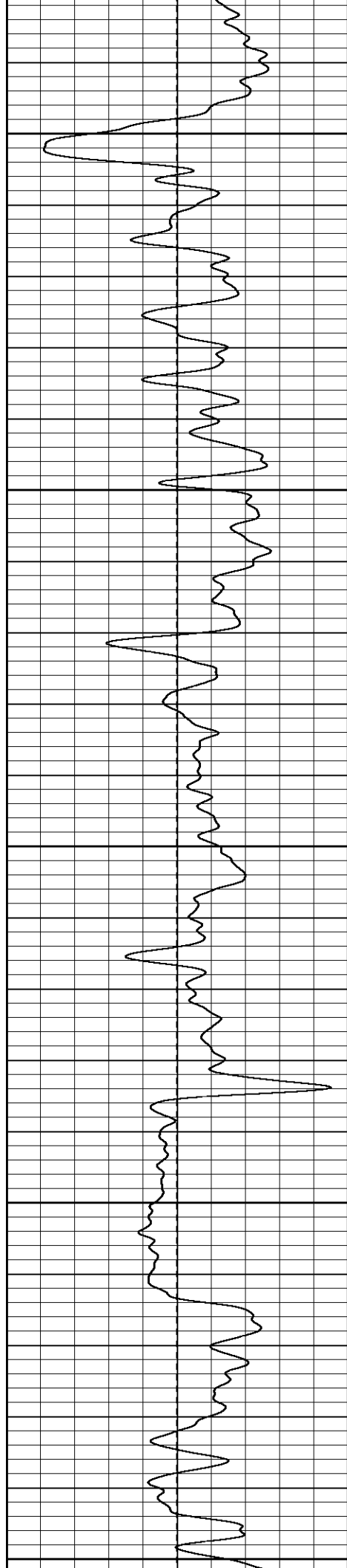
900
Surface Casing

950

1000

1050





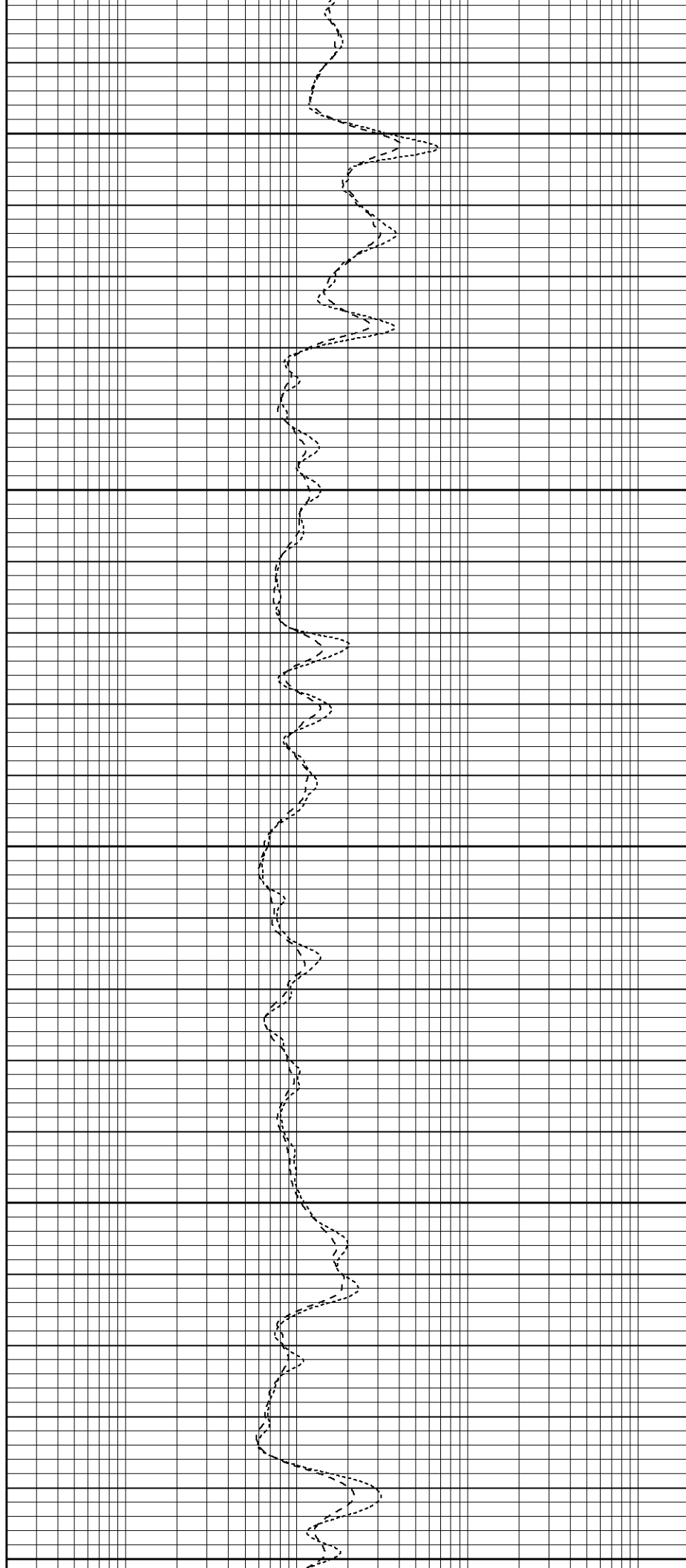
1100

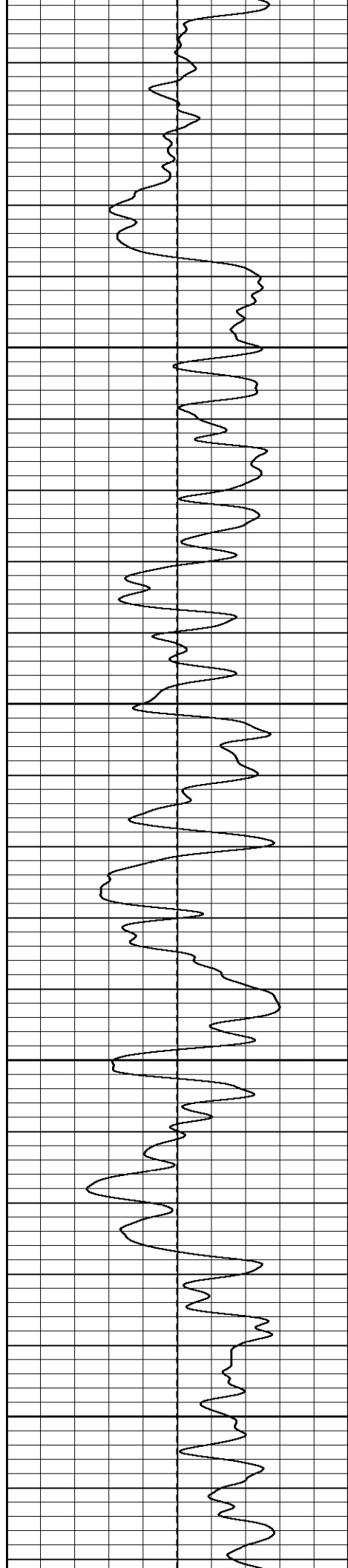
1150

1200

1250

1300



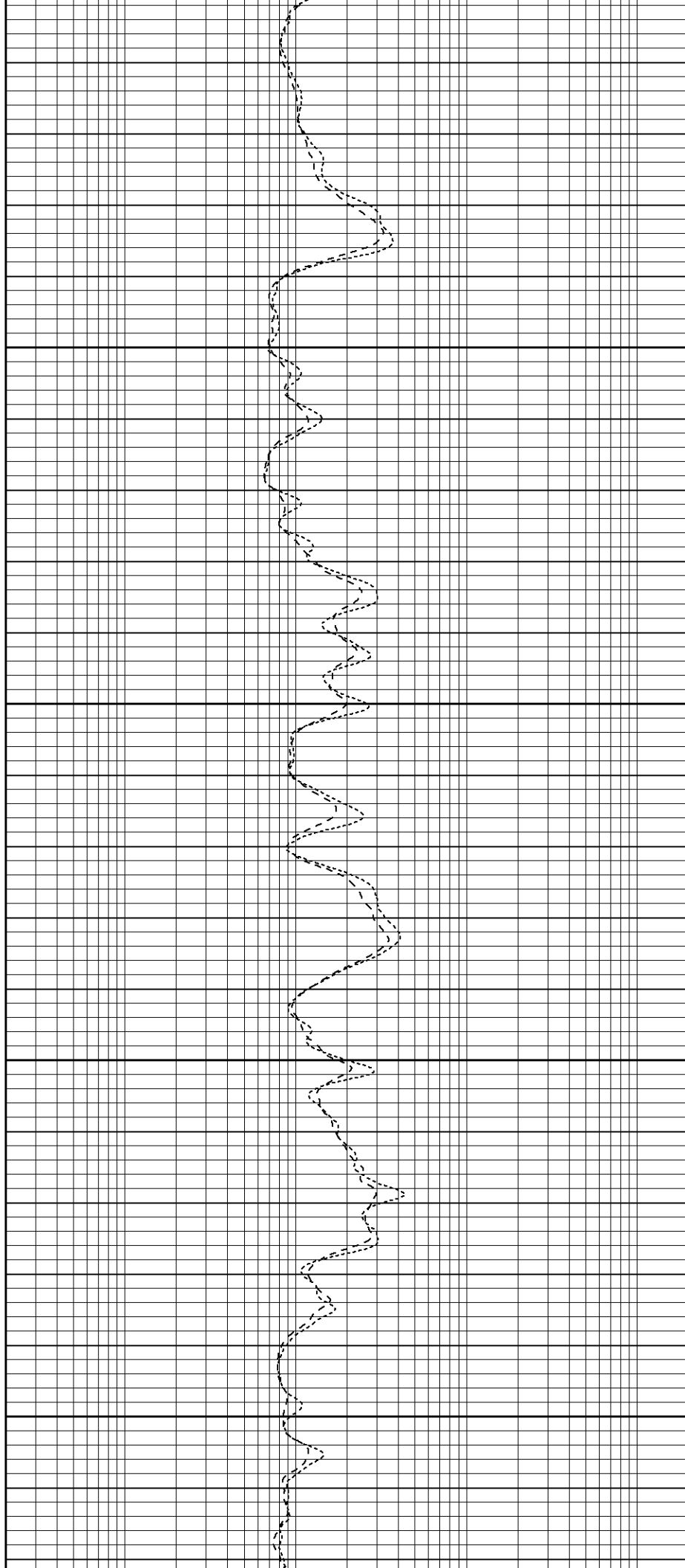


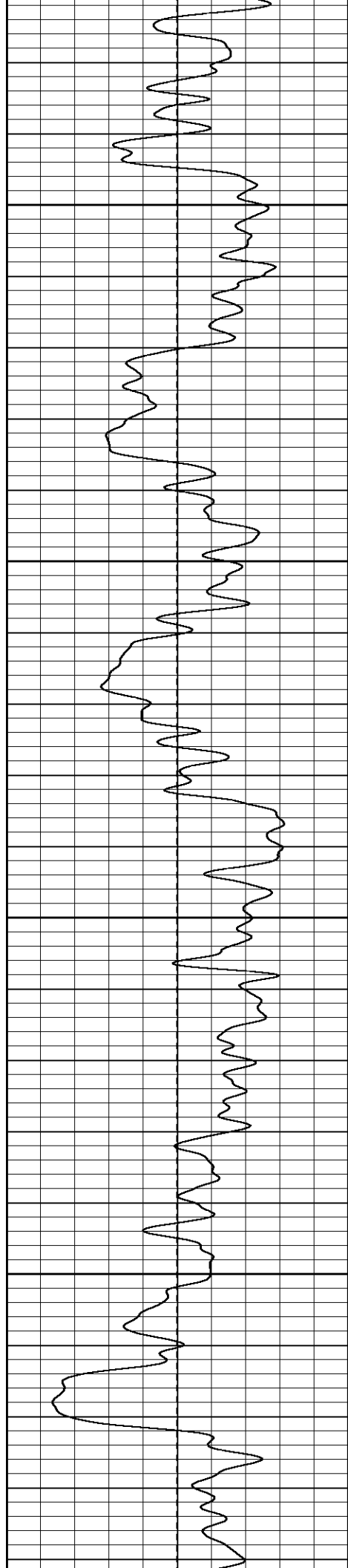
1350

1400

1450

1500



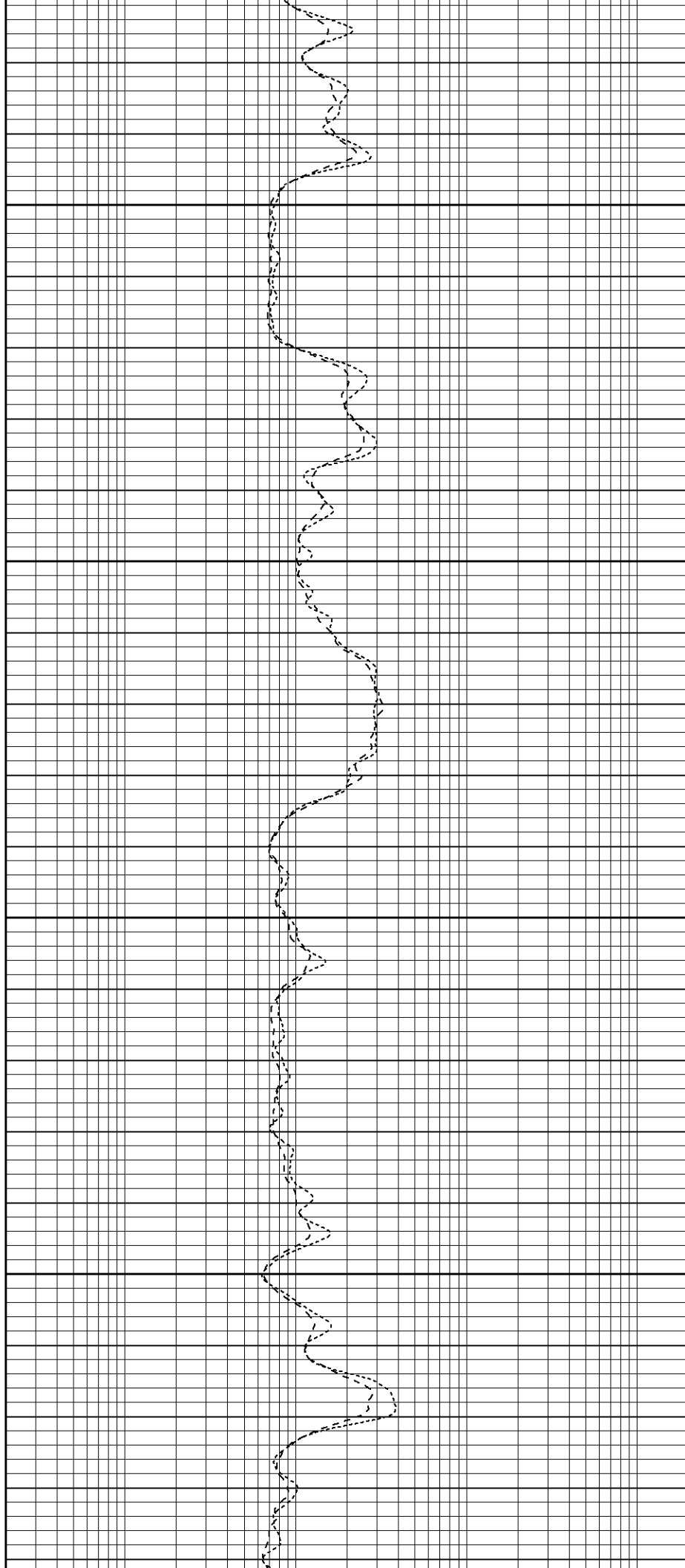


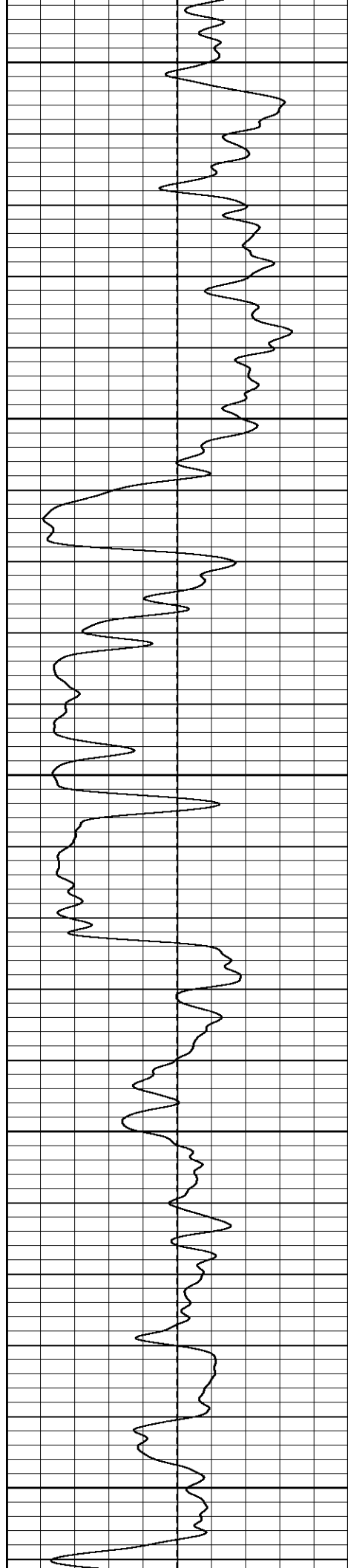
1550

1600

1650

1700





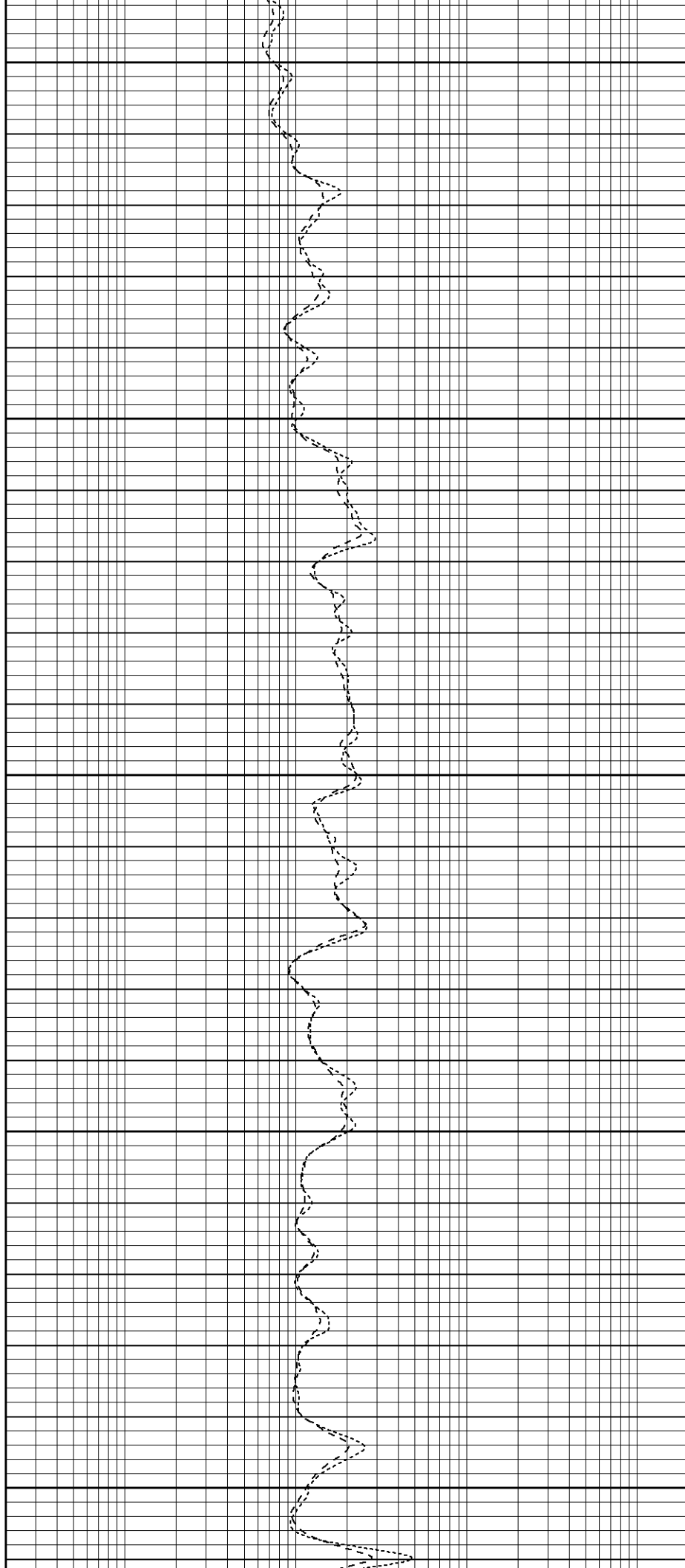
1750

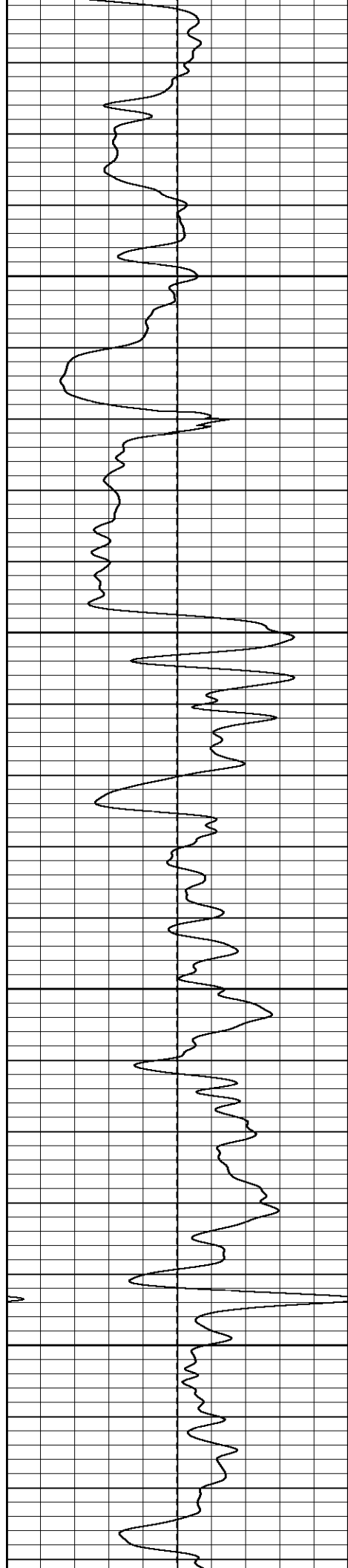
1800

1850

1900

1950



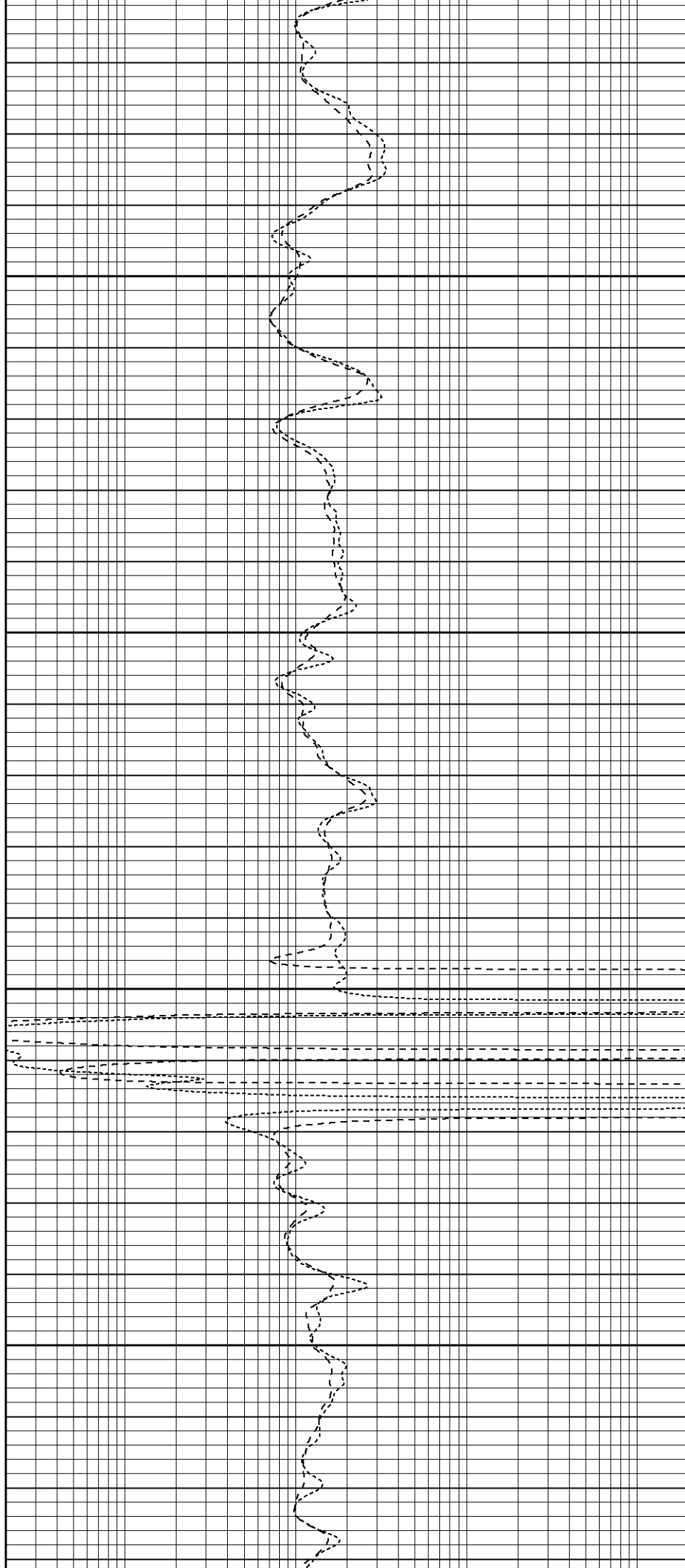


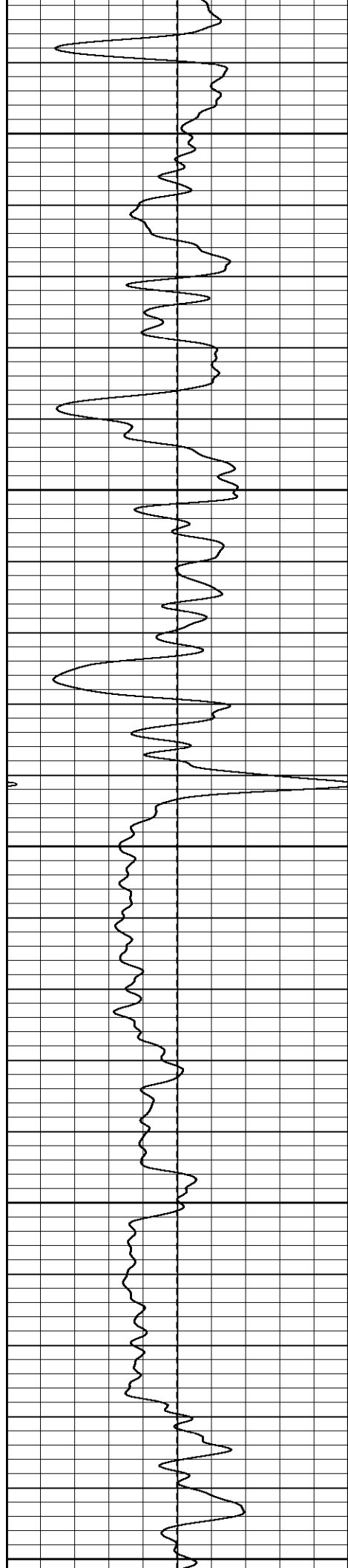
2000

2050

2100

2150





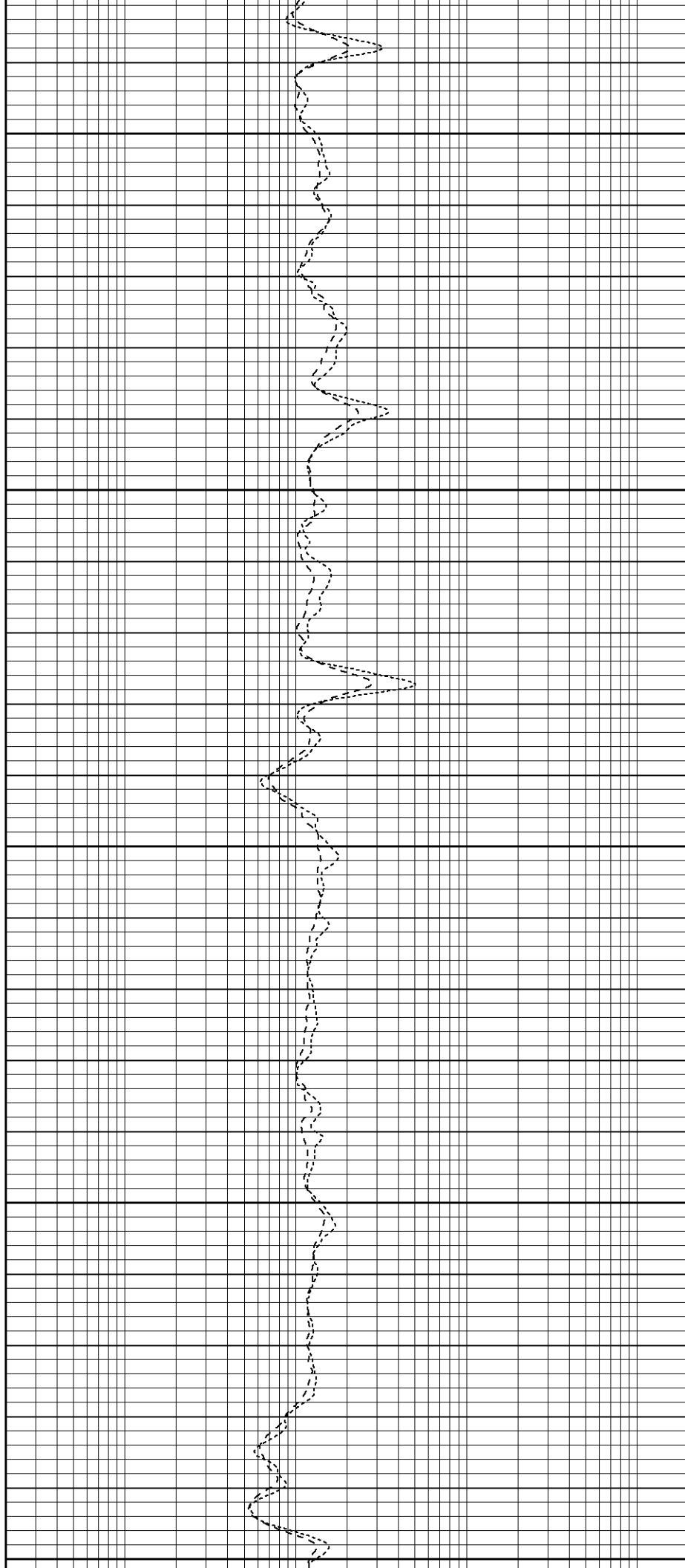
2200

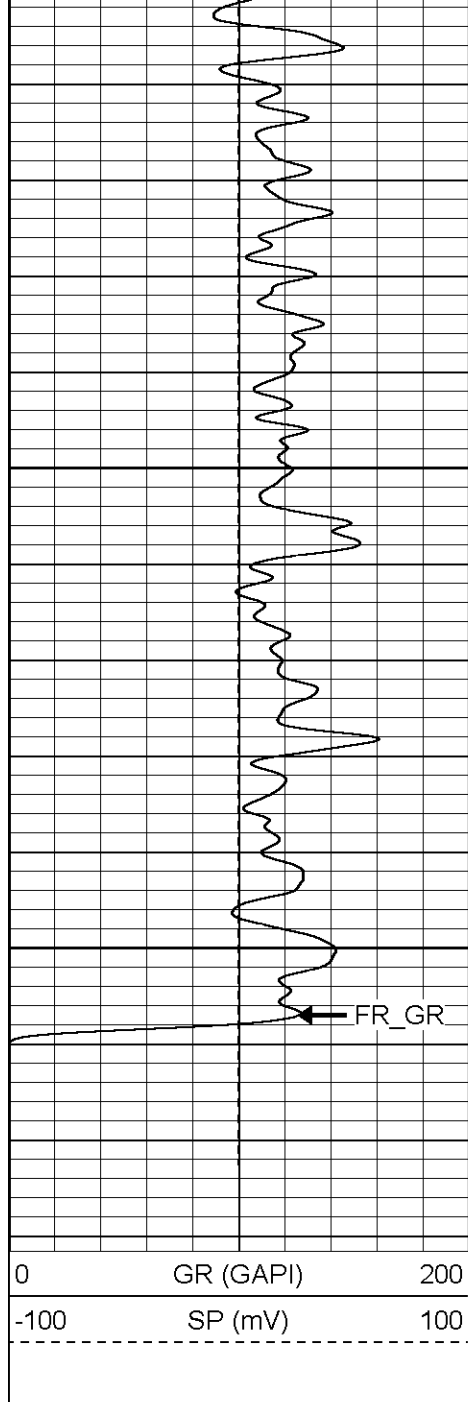
2250

2300

2350

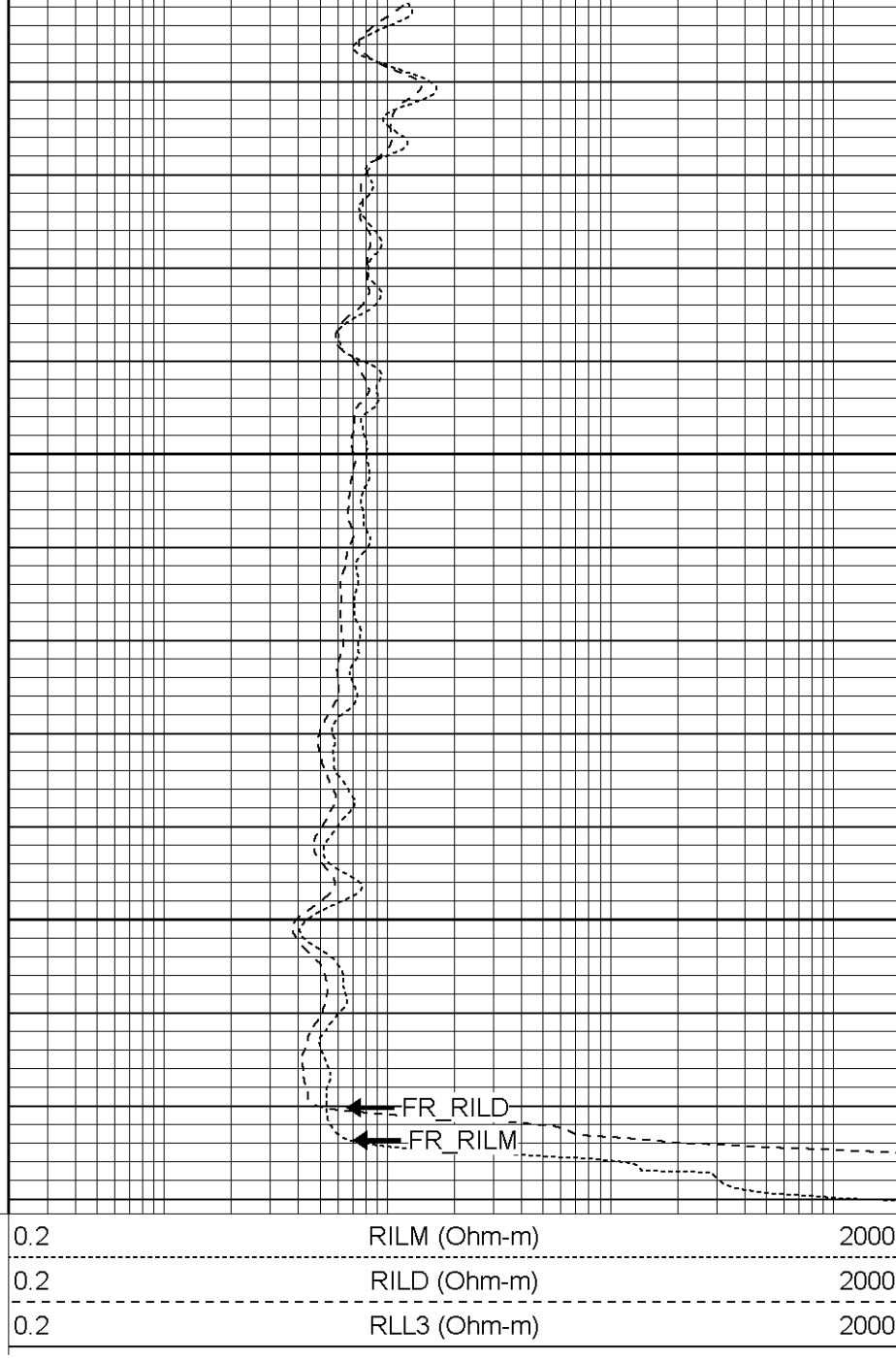
2400





2450

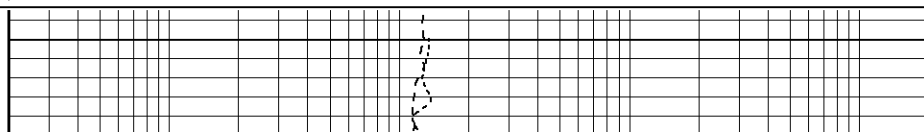
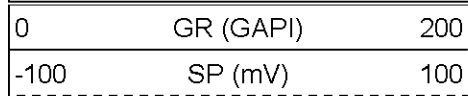
2500

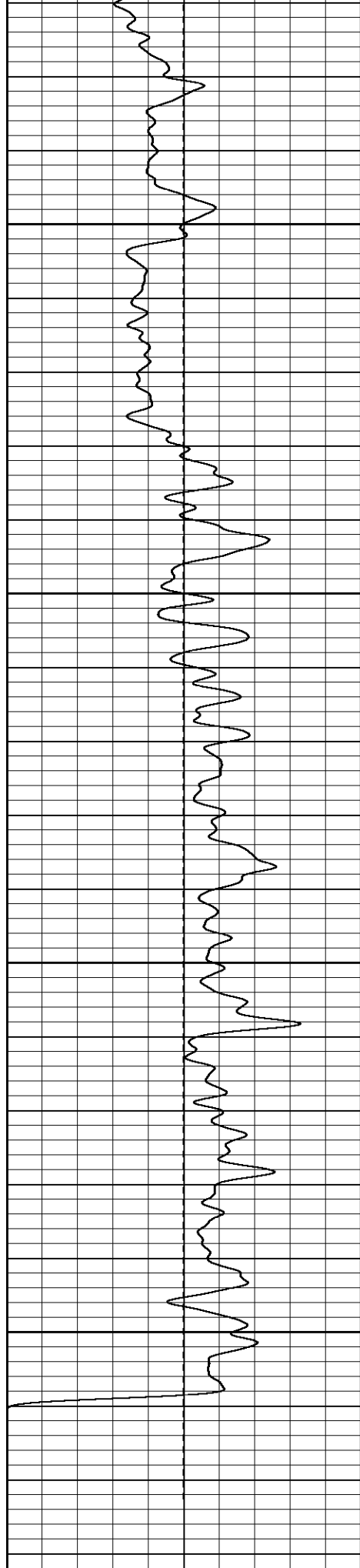


Patterson

Repeat Section

Database File: xtoge2003.db
 Dataset Pathname: pass1.1
 Presentation Format: dil
 Dataset Creation: Sat Mar 18 06:45:16 2006 by Calc Warrior 7.0 STD Ope
 Charted by: Depth in Feet scaled 1:240





2350

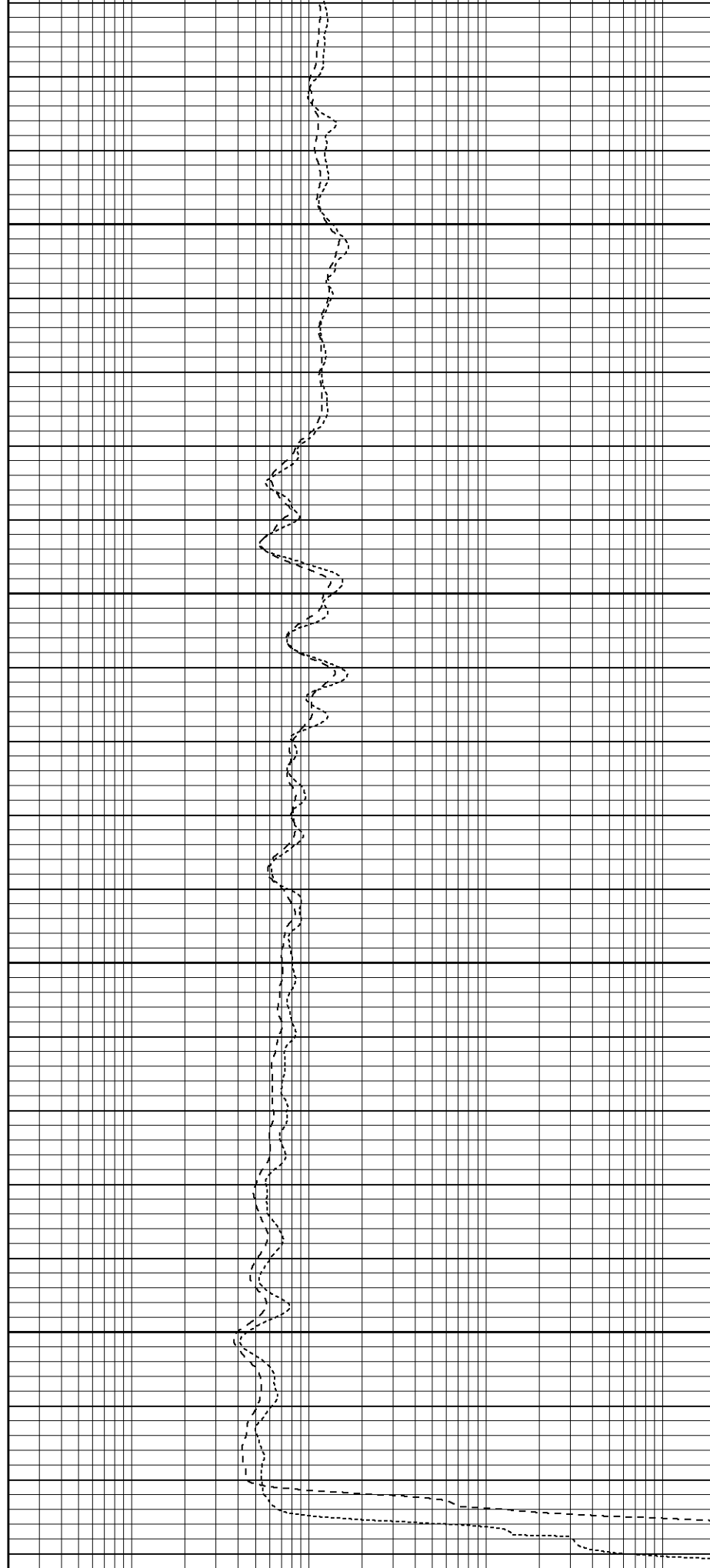
2400

2450

2500

0 GR (GAPI) 200

-100 SP (mV) 100



0.2 RILM (Ohm-m) 2000

0.2 RII D (Ohm-m) 2000

100	CP (mV)	0.2	RLL3 (Ohm-m)	2000
		0.2	RLL3 (Ohm-m)	2000

Dual Induction Calibration Report								
Serial-Model:			5375-G					
Surface Cal Performed:			Mon Feb 13 13:52:53 2006					
Downhole Cal Performed:			Tue Feb 14 23:23:54 2006					
Surface Calibration								
Readings			References			Results		
Loop:	Air	Loop		Air	Loop		m	b
Deep	0.000	0.633	V	0.000	500.000	mmho-m	789.538	0.000
Medium	-0.010	0.752	V	0.000	550.000	mmho-m	722.258	7.223
Internal:	Zero	Cal		Zero	Cal		m	b
Deep	0.012	0.636	V	0.000	500.000	mmho-m	800.610	-9.578
Medium	0.016	0.752	V	0.000	550.000	mmho-m	747.389	-12.066

Downhole Calibration								
Readings			References			Results		
Internal:	Zero	Cal	Zero	Cal		m	b	
Deep	1.512	503.799	mmho-m	0.280	502.577	mmho-m	1.000	-1.232
Medium	0.922	551.464	mmho-m	0.370	550.401	mmho-m	0.999	-0.551
Shallow	2.522	0.024	V	500.000	2.000	Ohm-m	0.000	2000.000

Gamma Ray Calibration Report		
Serial Number:	2001	
Tool Model:	OH	
Performed:	Tue Feb 14 10:15:47 2006	
Calibrator Value:	1.0	GAPI
Background Reading:	0.0	cps
Calibrator Reading:	1.0	cps
Sensitivity:	0.1800	GAPI/cps

Sensor	Offset (ft)	Schematic	Description	Len (ft)	OD (in)	Wt (lb)
CHD	25.08		None	0.75	1.50	5.00
GR	22.83		GR-OH (2001) SIE	3.50	3.25	40.00
CILD SP	10.60 10.60		DIL-G (5375) Gearhart	20.83	4.00	345.00

