



SUPERIOR
WELL SERVICES
Black Lick, Pa.
Mercer, Pa.
Wooster, Oh.
Cleveland, Ok.
Trinidad, Co.

CEMENT BOND GAMMA RAY LOG

Company XTO Energy Inc.
Well Golden Eagle 21-14
Field Purgatorie River
County Las Animas State CO

Location: API # : 05 071 09213 00
250' FSL & 2127 FWL

SEC 21 TWP 33S RGE 67W

Permanent Datum	Ground Level	Elevation	7552'
Log Measured From	Ground Level		
Drilling Measured From	Ground Level		

Other Services
Pressure Equip
Elevation
K.B. -----
D.F. -----
G.L. 7552'

Company XTO Energy Inc.
Well Golden Eagle 21-14
Field Purgatorie River
County Las Animas
State CO

Date 5-16-07

Run Number	One		
Depth Driller	2300'		
Depth Logger	1973'		
Bottom Logged Interval	1971'		
Top Log Interval	Surface		
Open Hole Size	7 7/8"		
Type Fluid	Water		
Density / Viscosity	///		
Max. Recorded Temp.	///		
Estimated Cement Top	Surface		
Time Well Ready	ROA		
Time Logger on Bottom	8:00 A.M.		
Equipment Number	T701		
Location	Trinidad		
Recorded By	Jennifer Allen		
Witnessed By	Mr. Mike Polley		

Borehole Record				Tubing Record			
Bit	From	To	Size	Weight	From	To	

Casing Record	Size	Wgt/Ft	Top	Bottom
Surface String	8 5/8"		00	1130'
Prot. String				
Production String	5 1/2"		00	N/A
Liner				

>>> Fold Here >>>

All interpretations are opinions based on inferences from electrical or other measurements and we cannot and do not guarantee the accuracy or correctness of any interpretation, and we shall not, except in the case of gross or willful negligence on our part, be liable or responsible for any loss, costs, damages, or expenses incurred or sustained by anyone resulting from any interpretation made by any of our officers, agents or employees. These interpretations are also subject to our general terms and conditions set out in our current Price Schedule.

Comments

Well Directions:

Two miles past Weston (Lopez Canyon) turn right, second left, second drive thru location



SUPERIOR
Black Lick, Pa.
Mercer, Pa.
Wooster, Oh.
Cleveland, Ok.
Trinidad, Co.

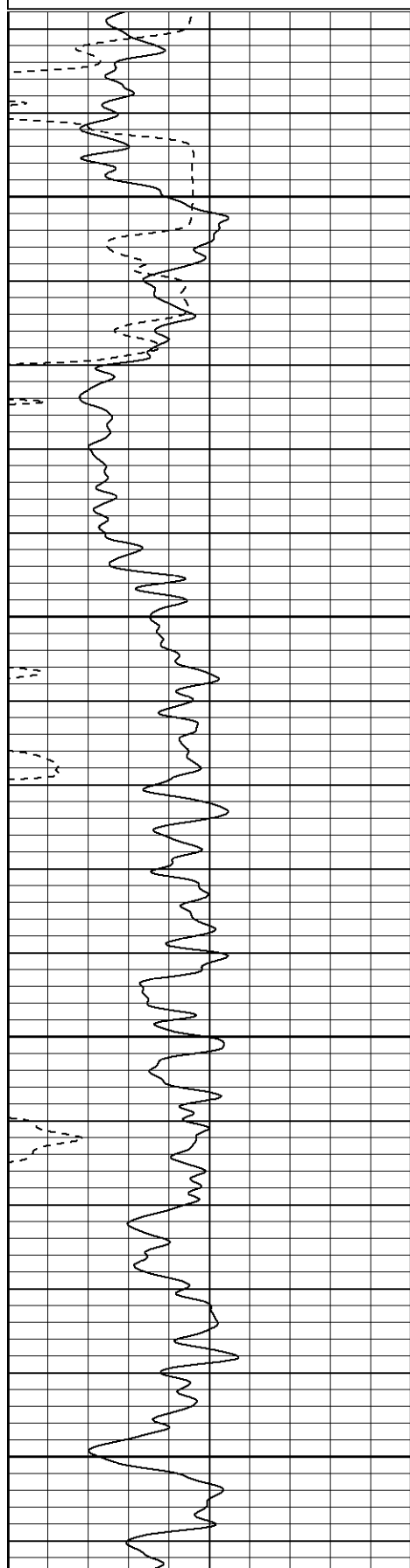
Main Pass 1000 PSI

Database File: xtoge2114051607b.db
Dataset Pathname: pass2
Presentation Format: cblrt
Dataset Creation: Wed May 16 08:14:37 2007 by Log Open-Cased 061129
Charted by: Depth in Feet scaled 1:240

0	GR (GAPI)	200
400	TT3 (usec)	200

0	AMP3 (mV)	100
18	CCL	-2
100	CBL5	1200

200 Variable Density 1200

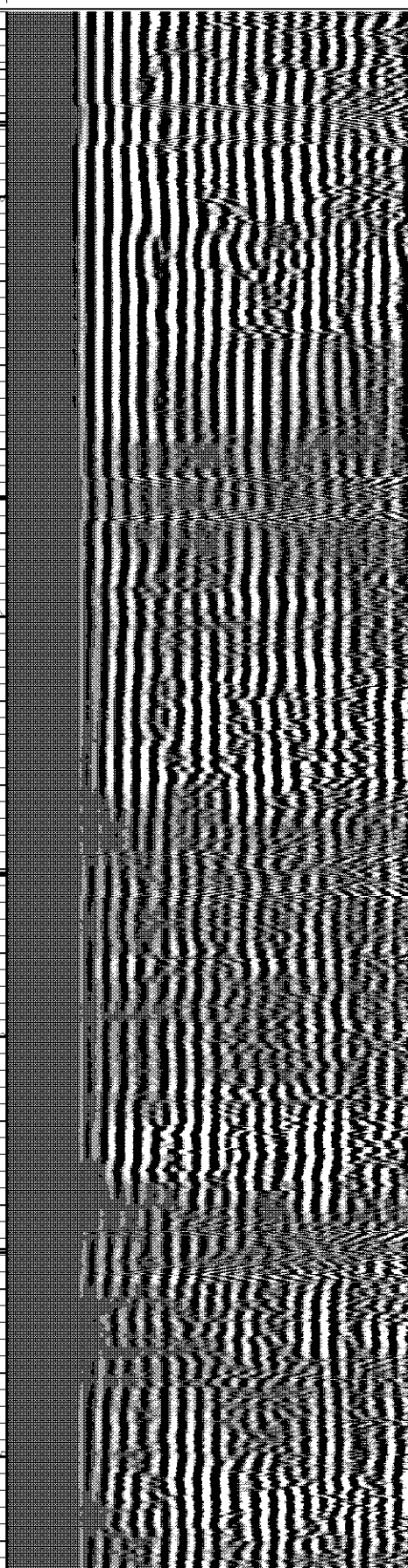
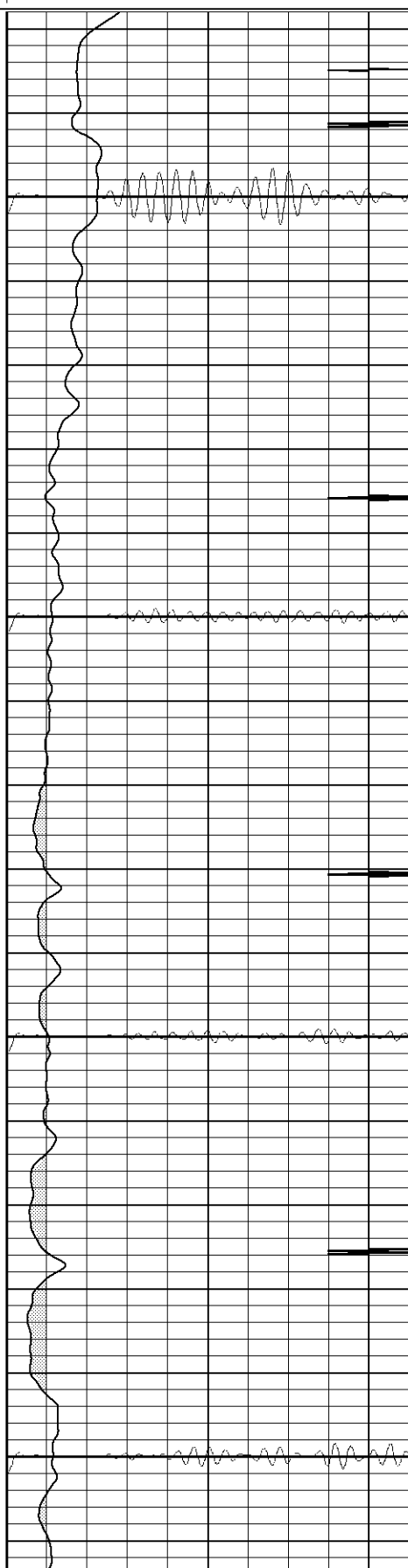


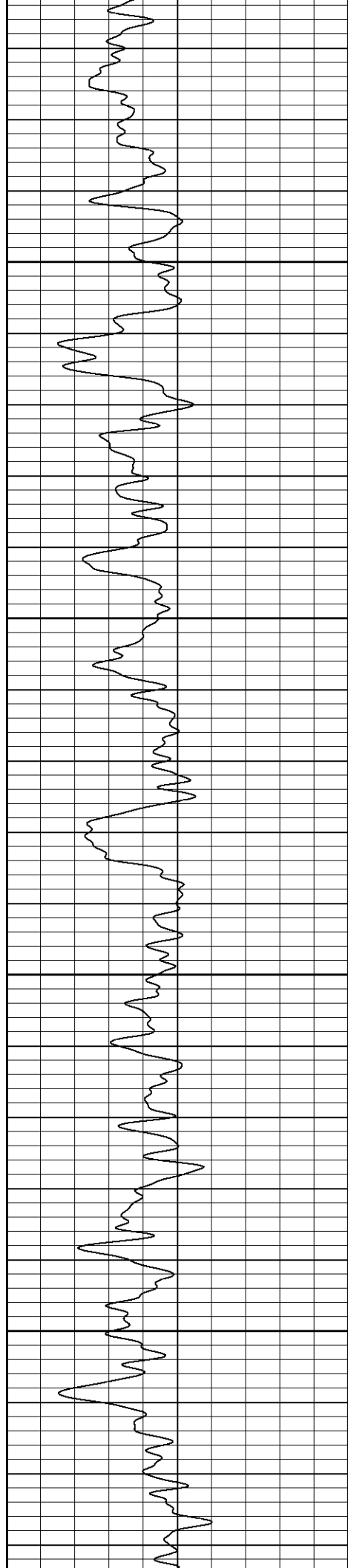
50

100

150

200



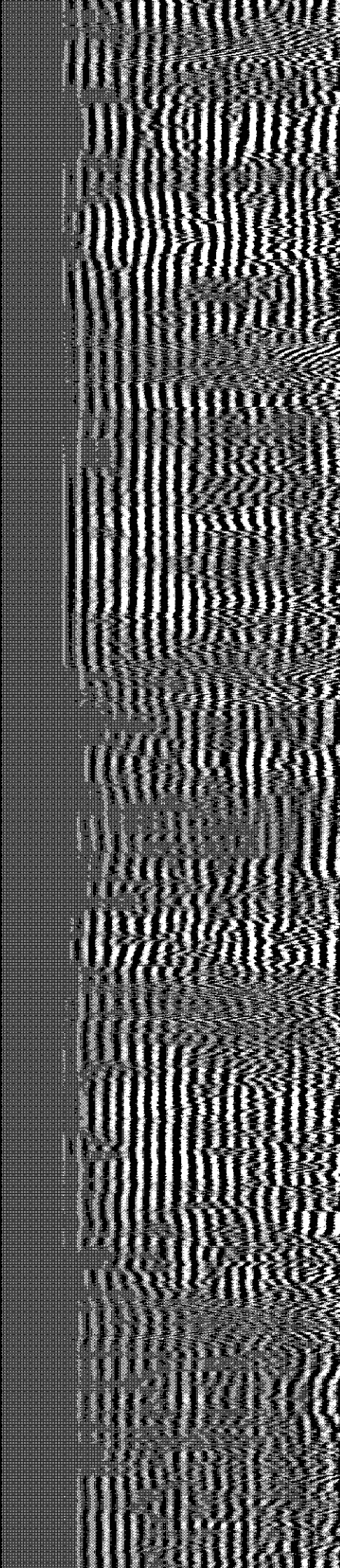
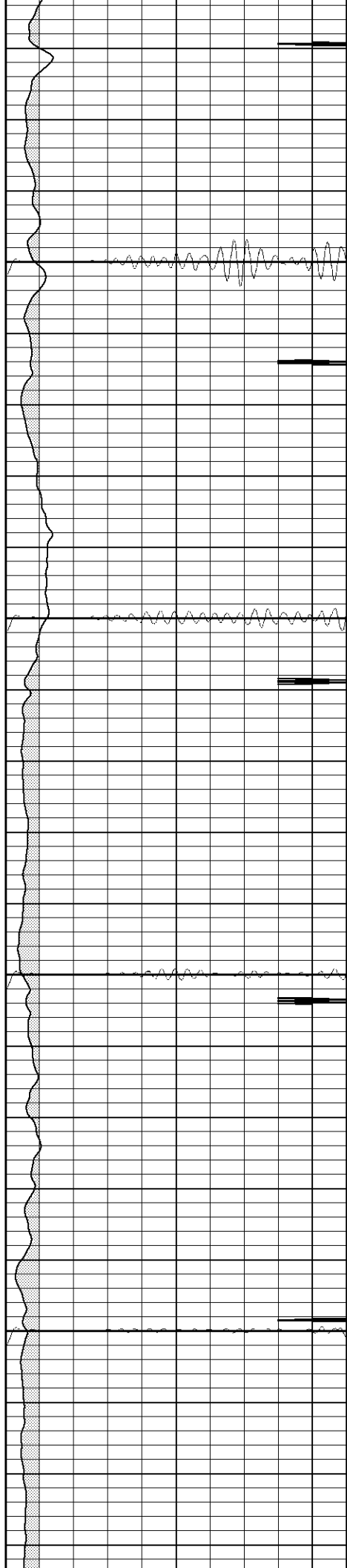


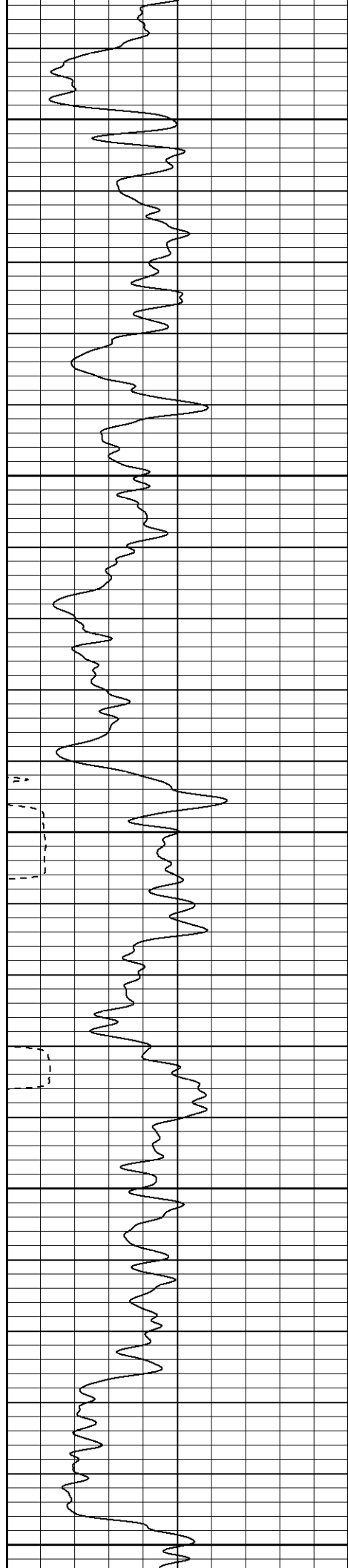
250

300

350

400





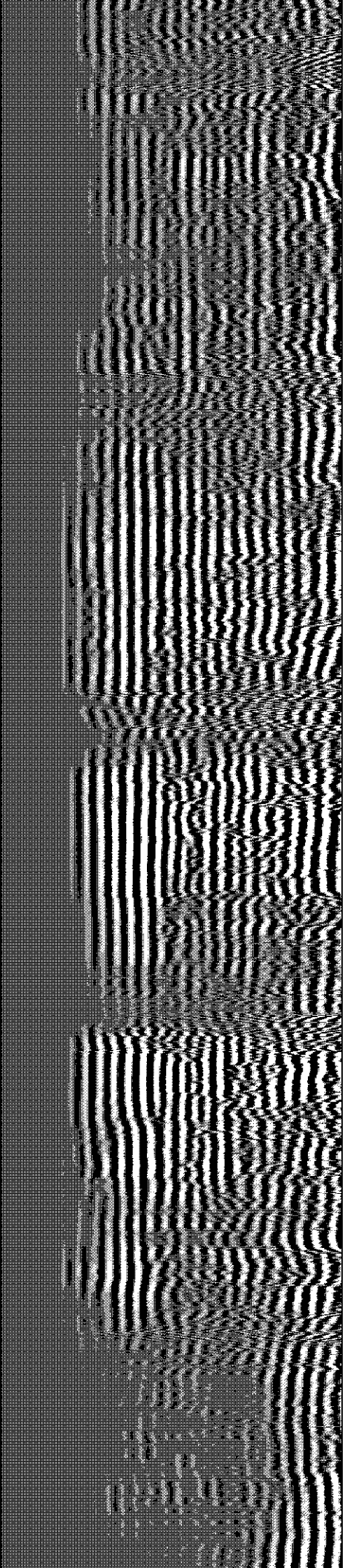
450

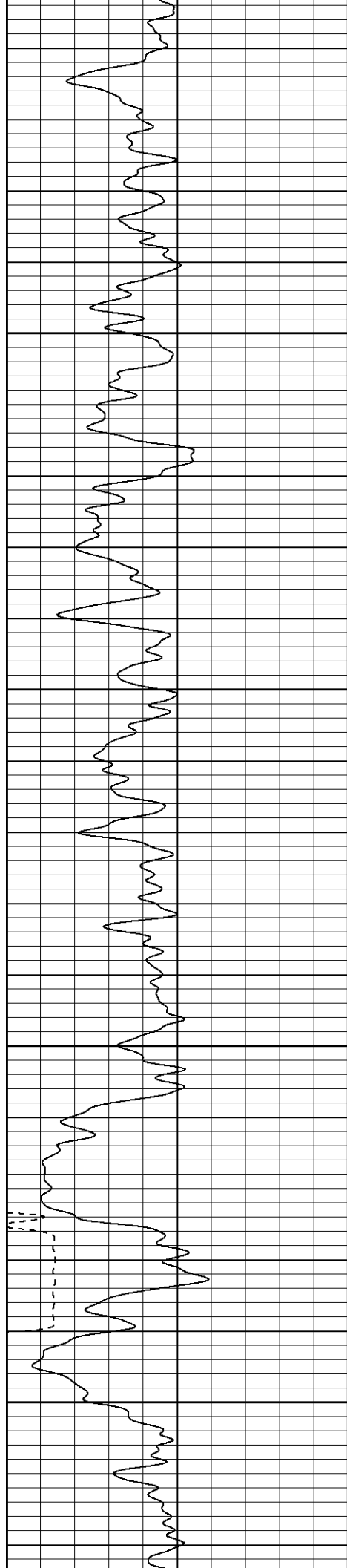
500

550

600

650



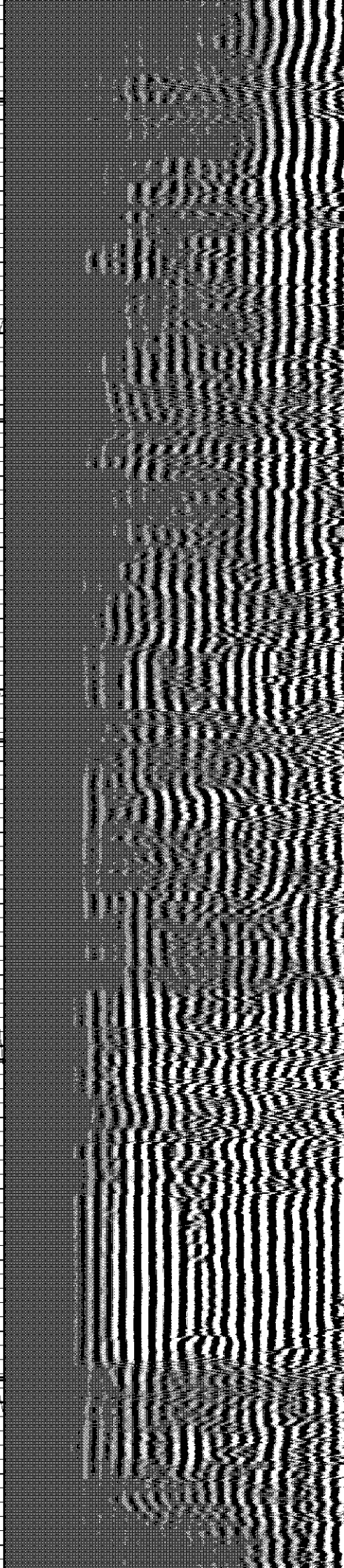


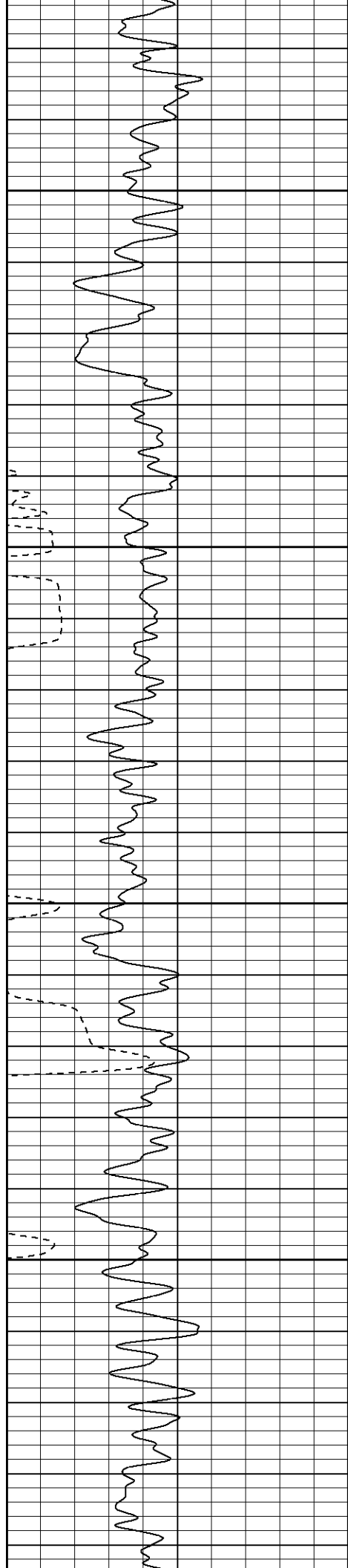
700

750

800

850



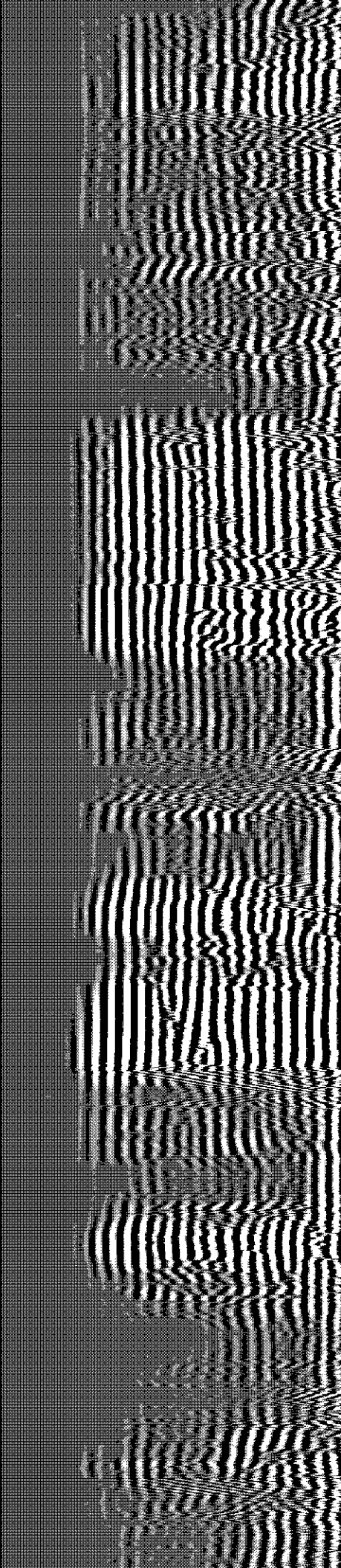
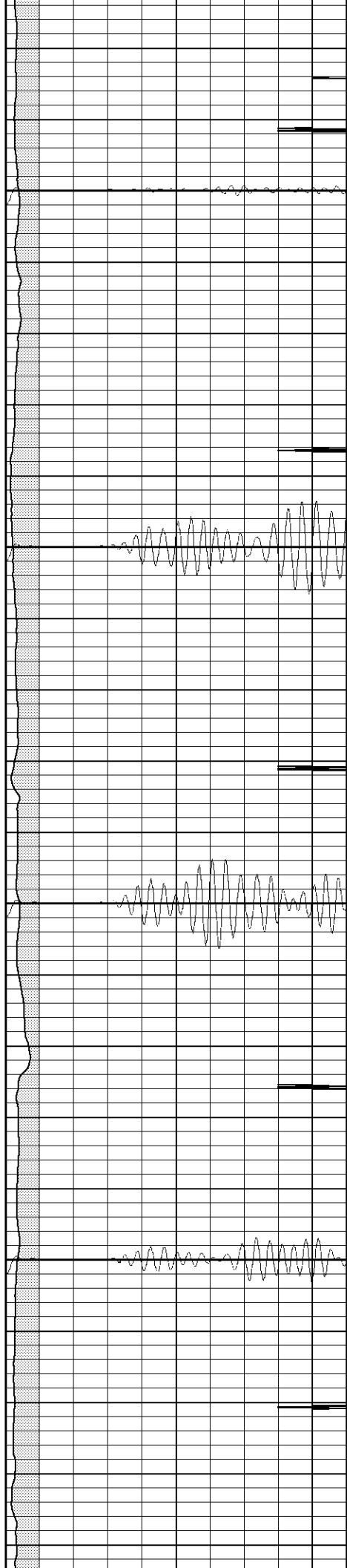


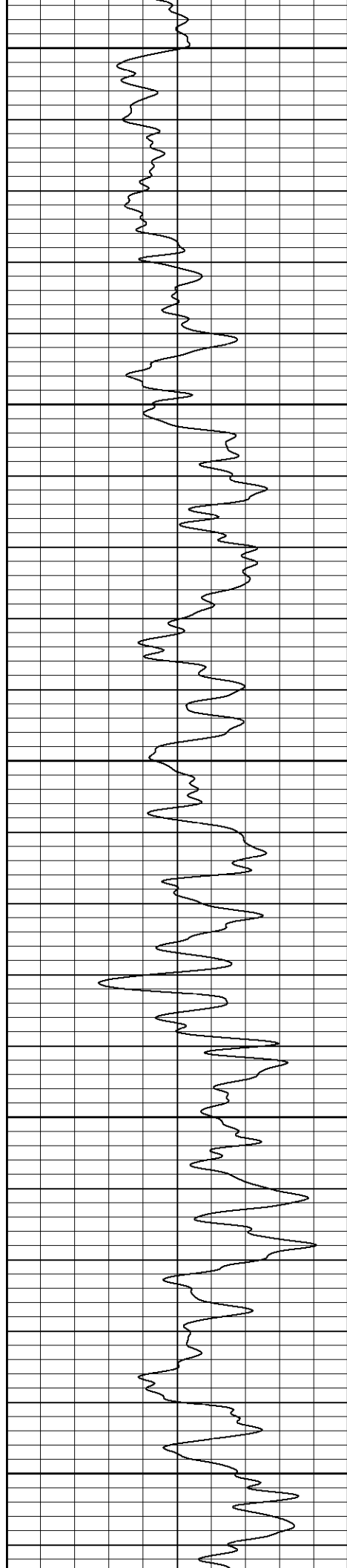
900

950

1000

1050





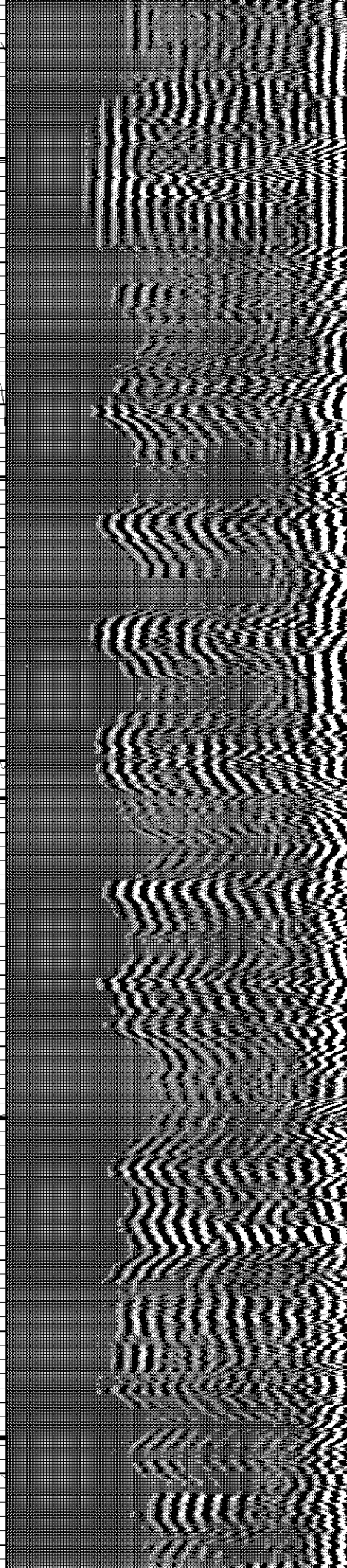
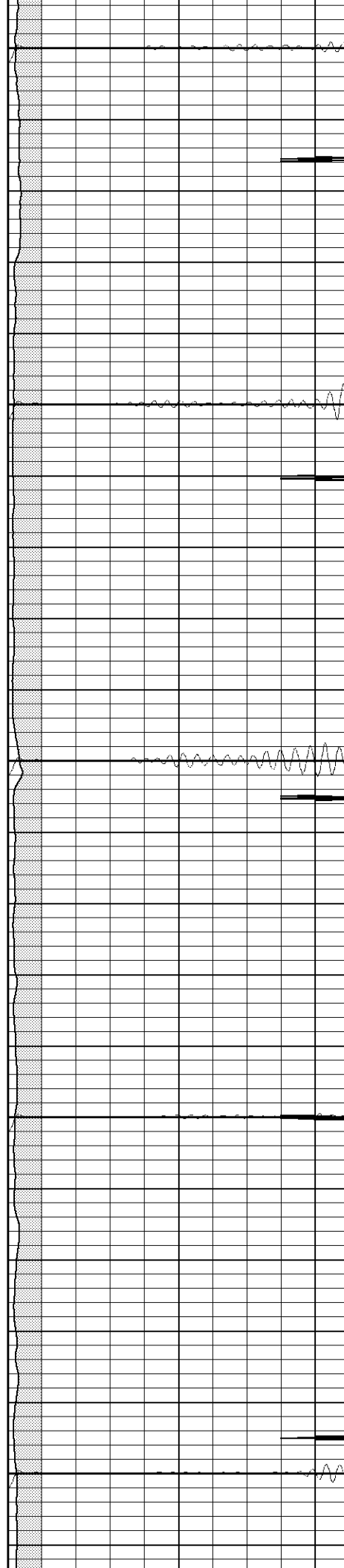
1100

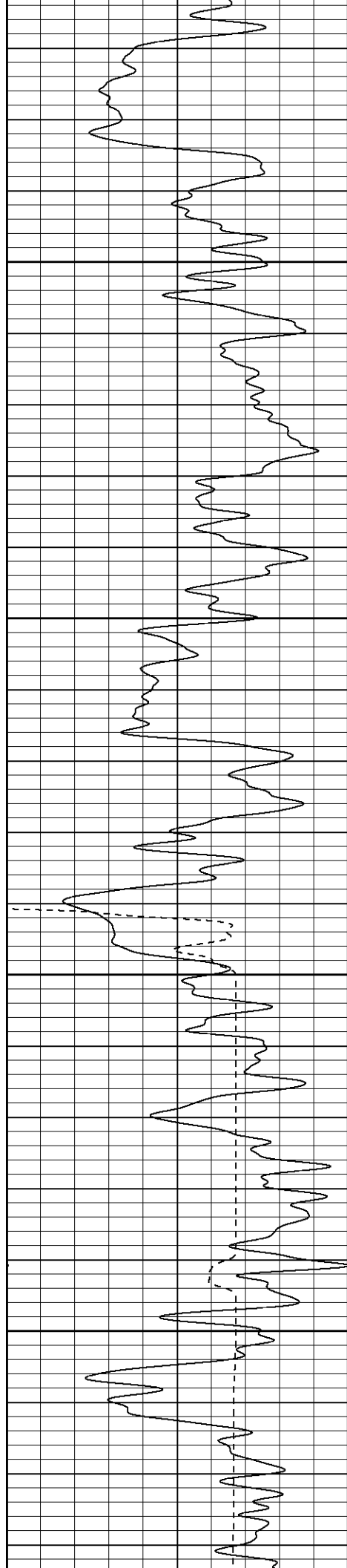
1150

1200

1250

1300



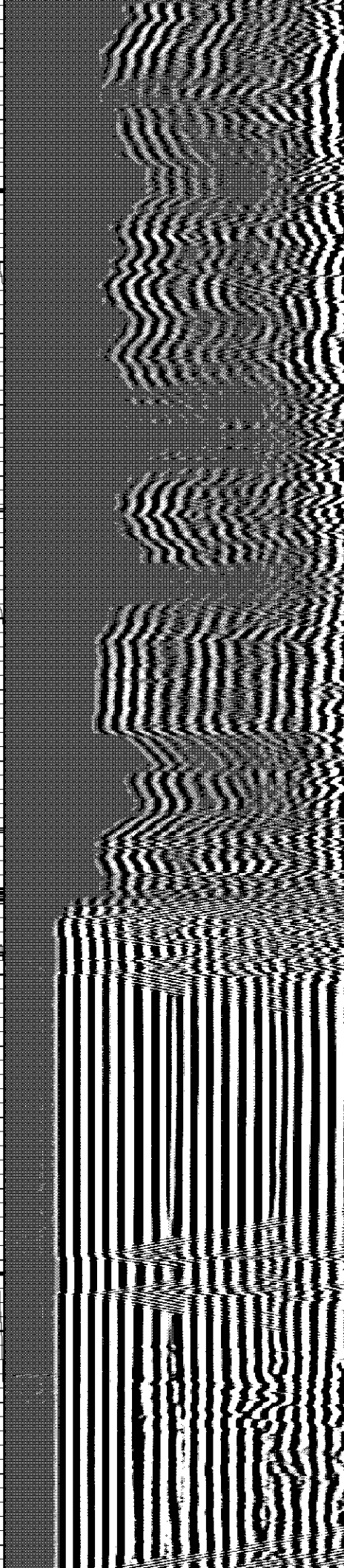
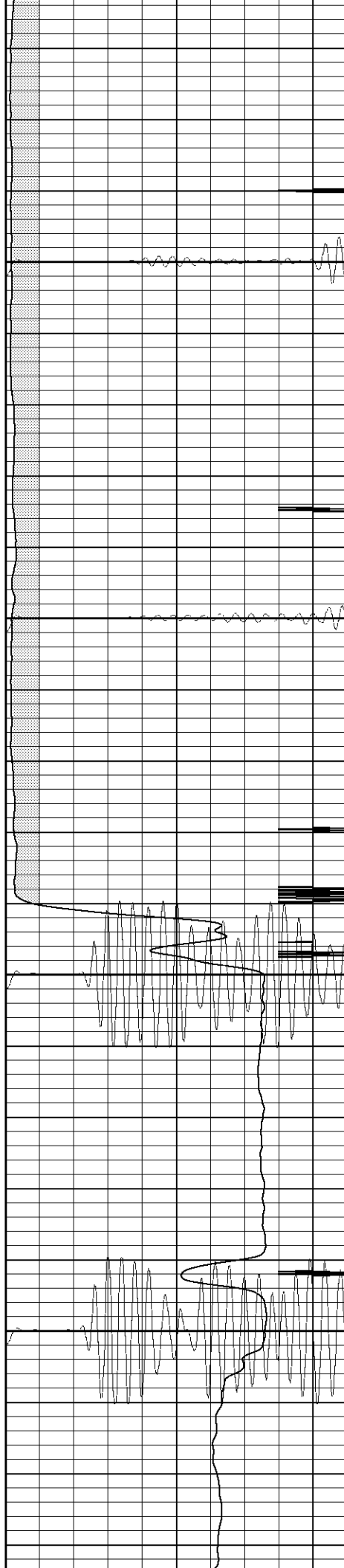


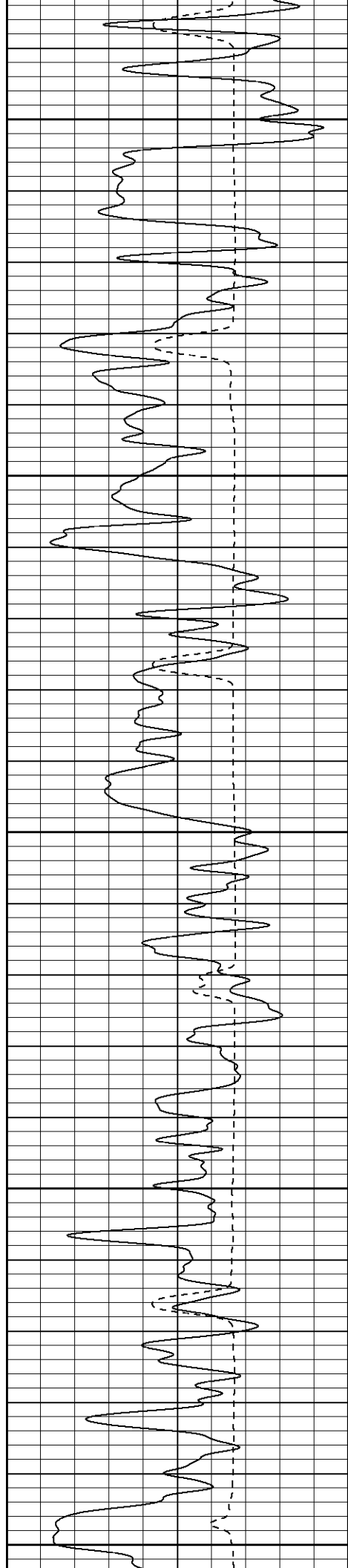
1350

1400

1450

1500





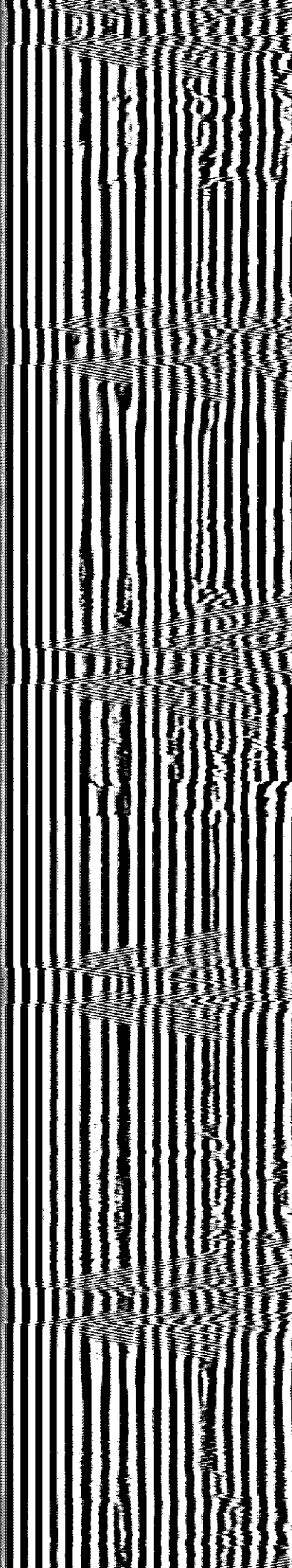
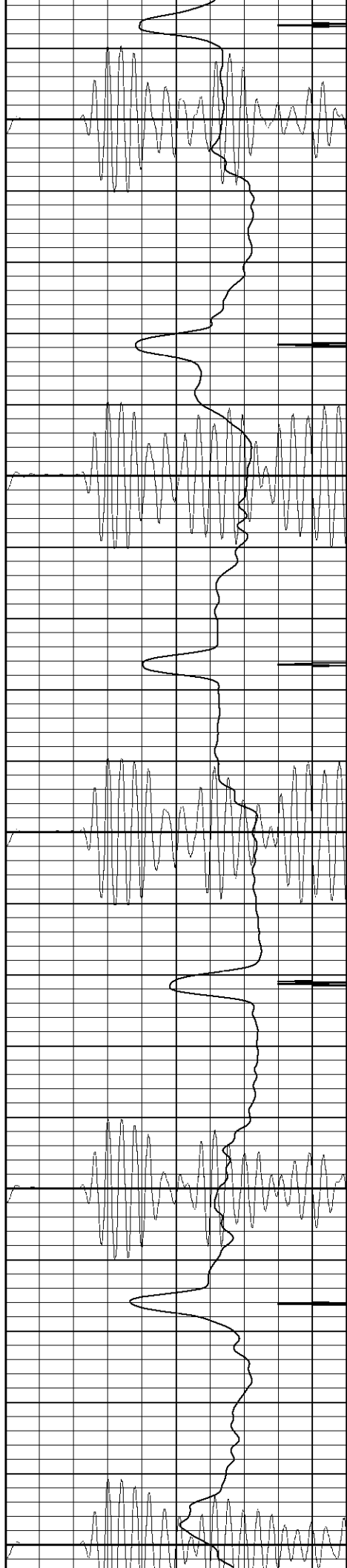
1550

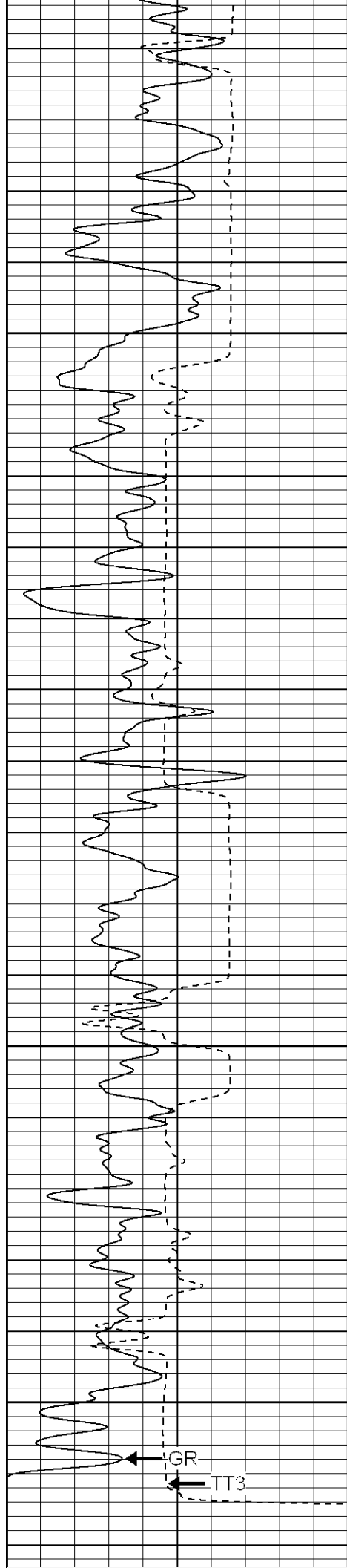
1600

1650

1700

1750





1800

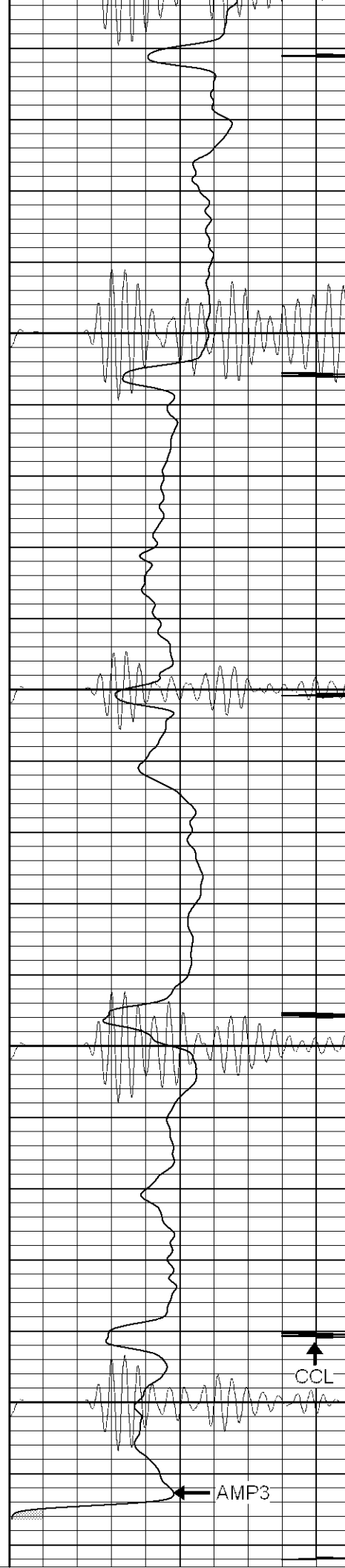
1850

1900

1950

GR

TT3



CCL

AMP3

CBL5

0	GR (GAPI)	200
400	TT3 (usec)	200
<hr/>		

0	AMP3 (mV)	100
18	CCL	-2
100	CBL5	1200

200	Variable Density	1200
-----	------------------	------



SUPERIOR

Black Lick, Pa.
Mercer, Pa.
Wooster, Oh.
Cleveland, Ok.
Trinidad, Co.

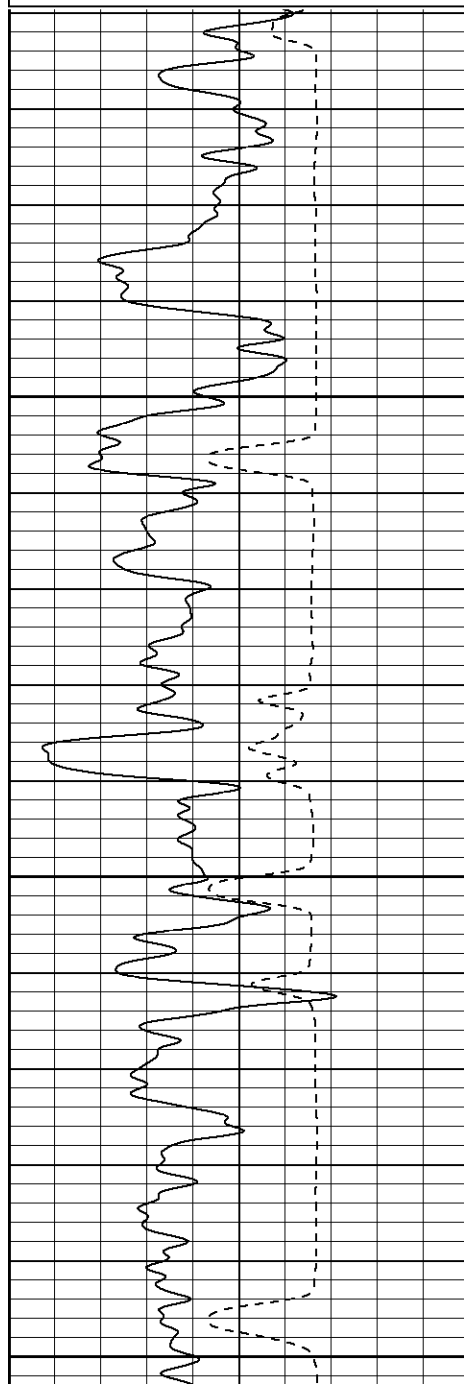
Repeat Section 0 PSI

Database File: xtoge2114051607b.db
Dataset Pathname: pass1
Presentation Format: cblrt
Dataset Creation: Wed May 16 07:57:53 2007 by Log Open-Cased 061129
Charted by: Depth in Feet scaled 1:240

0	GR (GAPI)	200
400	TT3 (usec)	200
<hr/>		

0	AMP3 (mV)	100
18	CCL	-2
100	CBL5	1200

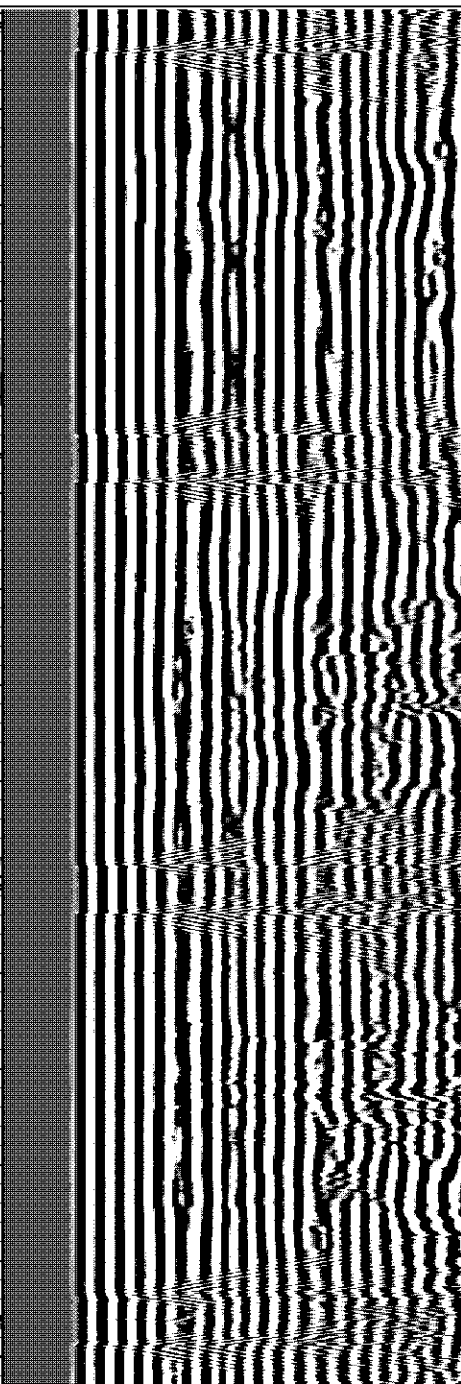
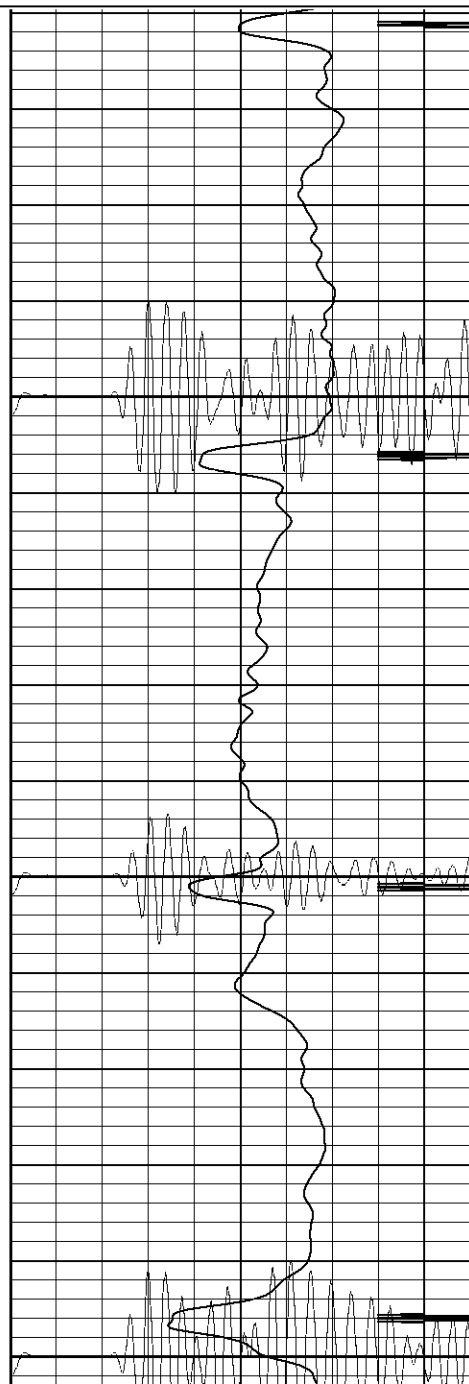
200	Variable Density	1200
-----	------------------	------

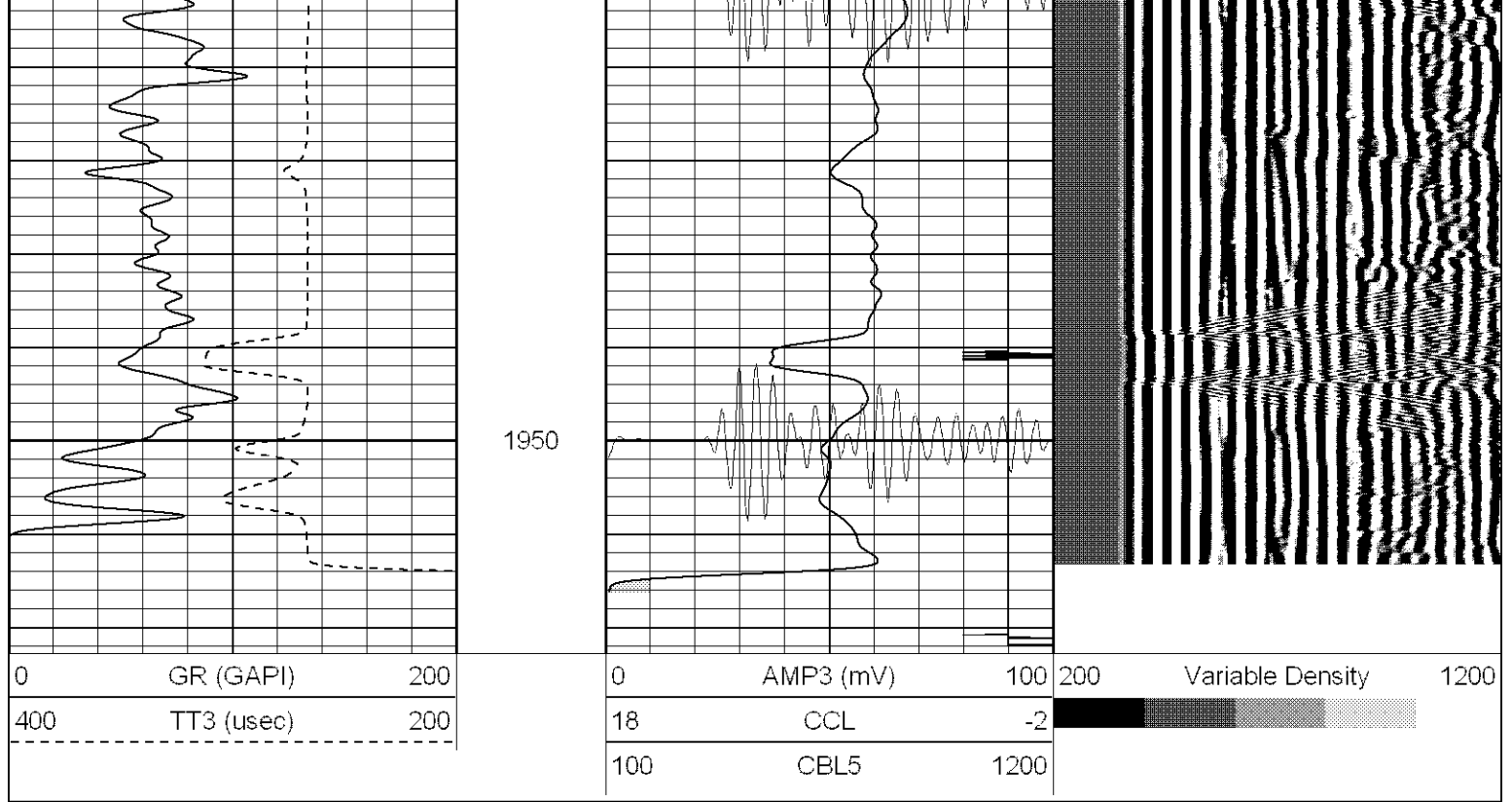


1800

1850

1900





Calibration Report

Database File: xtoge2114051607b.db
 Dataset Pathname: pass1
 Dataset Creation: Wed May 16 07:57:53 2007 by Log Open-Cased 061129

Cement Bond Log Calibration Report

Serial Number:	Titan2		
Tool Model:	2		
Performed:	Tue Apr 03 12:22:40 2007		
Depth:	131.206	ft	
Casing Diameter:	5.5	in	
	3' Spacing	5' Spacing	
Signal Zero:	1	1	mV
Calibrated Amplitude:	85	85	mV
Reading at Signal Zero:	0.00546875	0.00556641	V
Reading in Free Pipe:	1.91	1.48699	V
Gain:	44.1053	56.7022	
Offset:	1	0.684372	

Gamma Ray Calibration Report

Serial Number:	TITAN2	
Tool Model:	T2	
Performed:	Fri Jan 12 09:14:13 2007	
Calibrator Value:	200.0	GAPI
Background Reading:	54.0	cps
Calibrator Reading:	219.0	cps
Sensitivity:	1.1000	GAPI/cps

Sensor	Offset (ft)	Schematic	Description	Len (ft)	OD (in)	Wt (lb)
--------	-------------	-----------	-------------	----------	---------	---------

GR	13.64		None	0.75	1.50	5.00
			GR-T2 (TITAN2) Titan5	2.52	2.44	25.00
WVF5	9.49					
WVF3	8.49		CBL-2 (Titan2)	7.23	2.44	110.00
			X	3.00	1.69	25.00
CCL	0.83		CCL-T5 (Titan5) Long	2.15	2.75	15.00
Dataset: xtoge2114051607b.db: field/well/run1/pass1 Total Length: 15.66 ft Total Weight: 180.00 lb O.D. 2.75 in						