

Company	XTO Energy, Inc.	Company	XTO Energy, Inc.
Well	Apache Canyon 13-07	Well	Apache Canyon 13-07
Field	Purgatoire River	Field	Purgatoire River
County	Las Animas	County	Las Animas
State	CO	State	CO
Location:	API # : 05 071 08885 00	Other Services	CDL NEUTRON
Permanent Datum	2219' FNL & 1943' FEL	Elevation	8234'
Log Measured From	SEC 13 TWP 34S RGE 68W	K.B. -----	
Drilling Measured From	Ground Level	D.F. -----	
	Ground Level	G.L. 8234'	
Date	8-14-06		
Run Number	One		
Depth Driller	2430'		
Depth Logger	2418'		
Bottom Logged Interval	2416'		
Top Log Interval	Surface Casing		
Casing Driller	8 5/8" @ 221'		
Casing Logger	220'		
Bit Size	7 7/8"		
Type Fluid in Hole	Water		
Density / Viscosity	///		
pH / Fluid Loss	///		
Source of Sample	///		
Rm @ Meas. Temp	///		
Rmf @ Meas. Temp	///		
Rmc @ Meas. Temp	///		
Source of Rmf / Rmc	///		
Rm @ BHT	///		
Time Circulation Stopped	7:00 A.M.		
Time Logger on Bottom	8:30 A.M.		
Maximum Recorded Temperature	108 DEG F		
Equipment Number	T720		
Location	Trinidad		
Recorded By	M. Norton		
Witnessed By	Mr. Don Johnson		

<<< Fold Here >>>

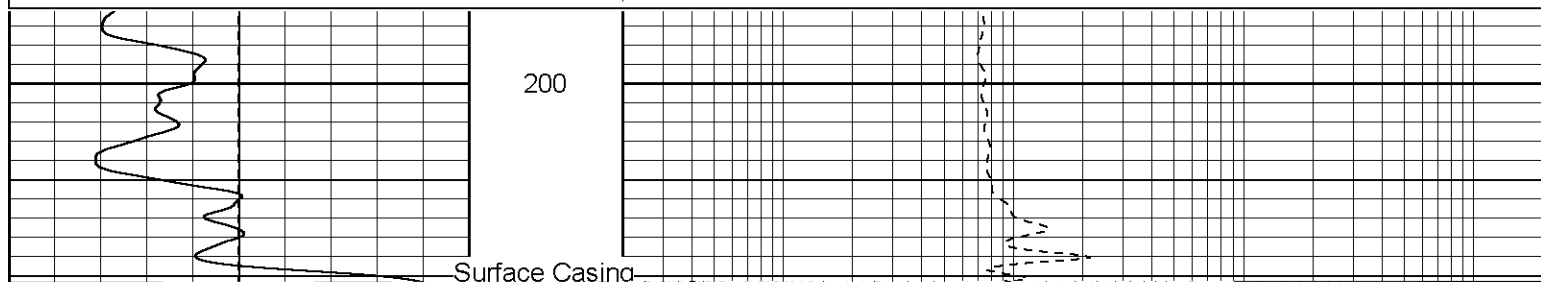
All interpretations are opinions based on inferences from electrical or other measurements and we cannot and do not warrant the accuracy or correctness of any interpretation, and we shall not, except in the case of gross or willful negligence on our part, be liable or responsible for any loss, costs, damages, or expenses incurred or sustained by anyone resulting from any interpretation made by any of our officers, agents or employees. These interpretations shall be subject to our general terms and conditions set out in our current Price Schedule. I

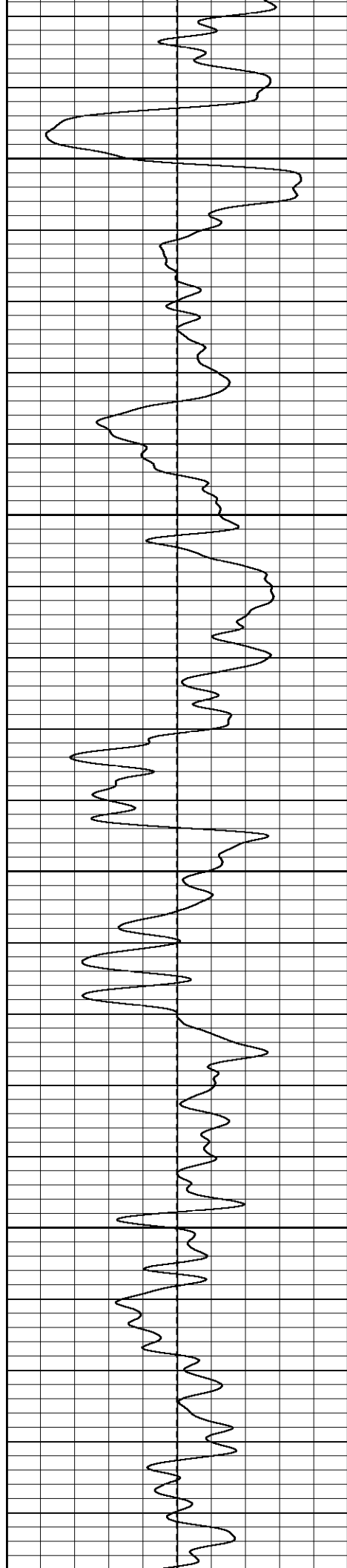
Comments

Well Directions:
First Bosque entrance, right on Big Bingham, to the end past jeep trail, stay straight thru single yellow gate, stay left, at top of hill at drive thru location, stay right to location.

Database File: xtoac1307.db
Dataset Pathname: pass2.1
Presentation Format: dil
Dataset Creation: Mon Aug 14 11:19:52 2006 by Calc Warrior 7.0 STD Ope
Charted by: Depth in Feet scaled 1:240

0	GR (GAPI)	200	0.2	RILM (Ohm-m)	2000
-100	SP (mV)	100	0.2	RILD (Ohm-m)	2000
			0.2	RLL3 (Ohm-m)	2000



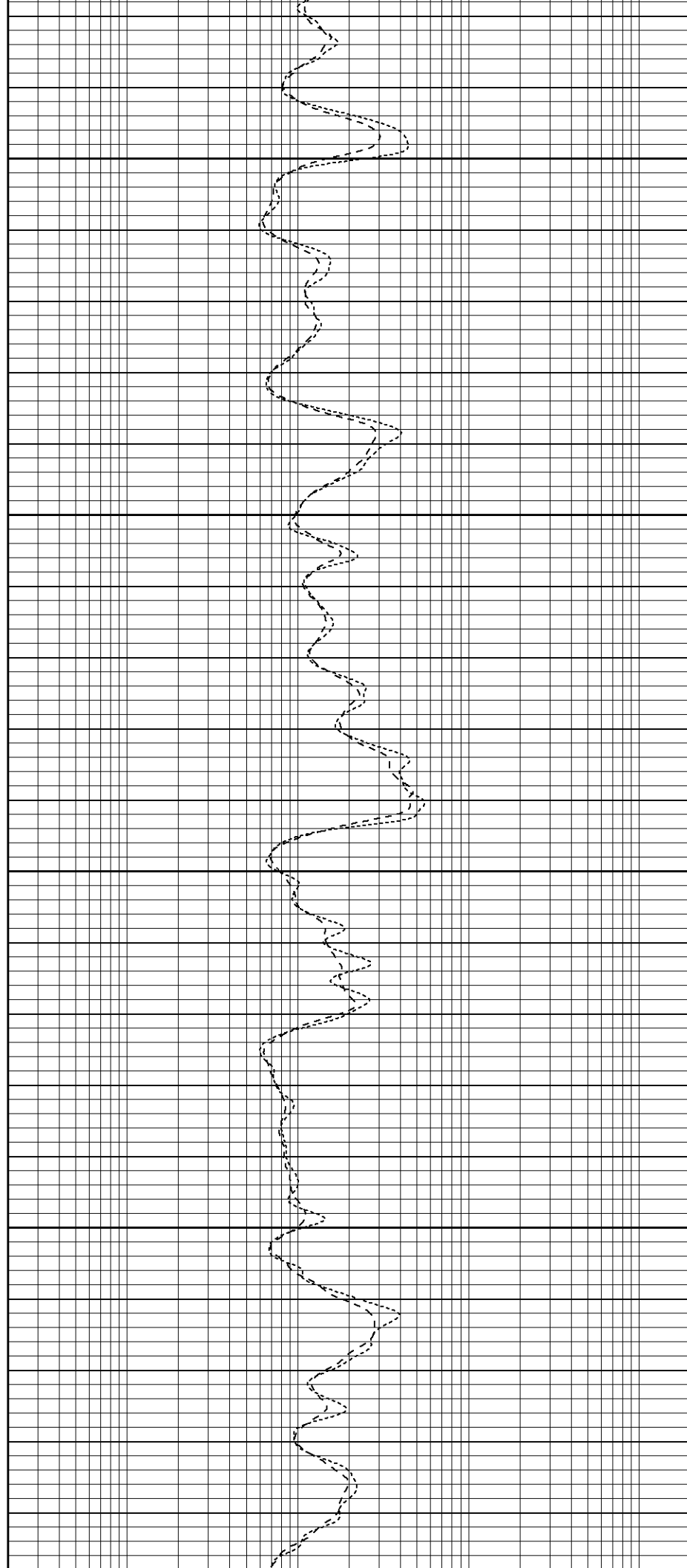


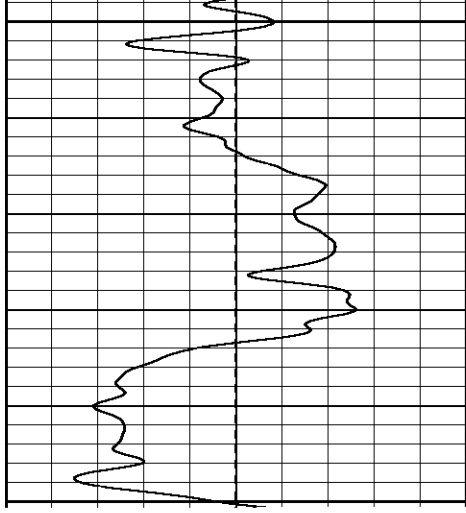
400

450

500

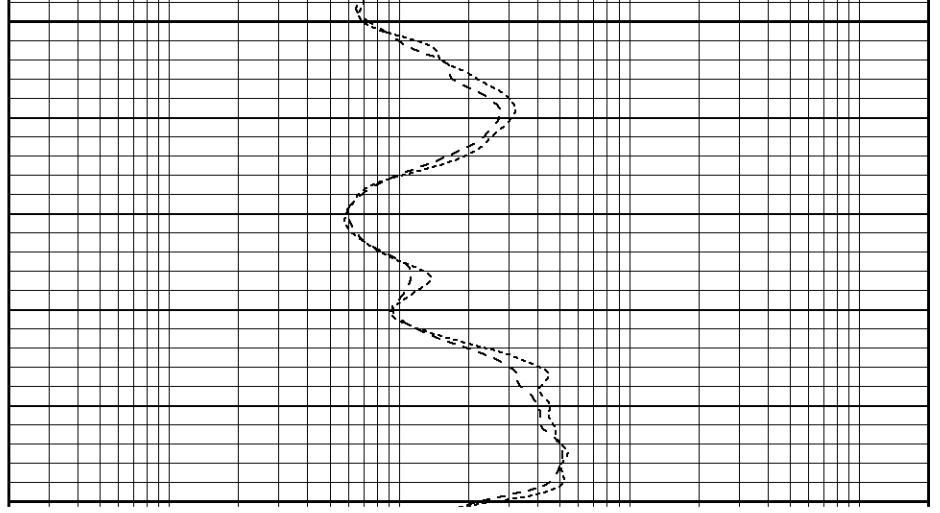
550

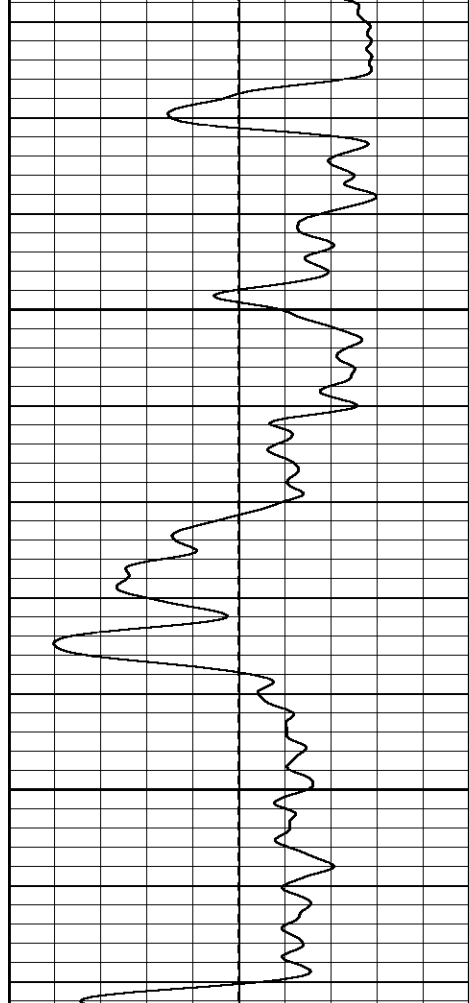




600

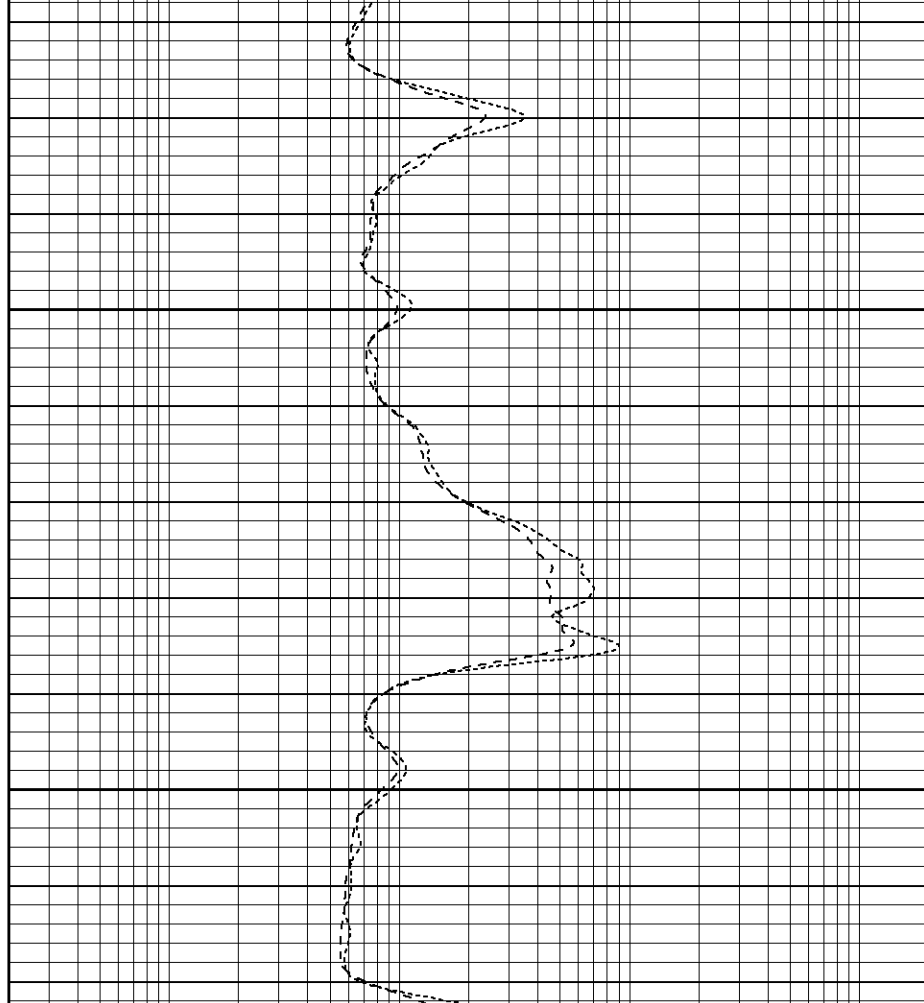
650

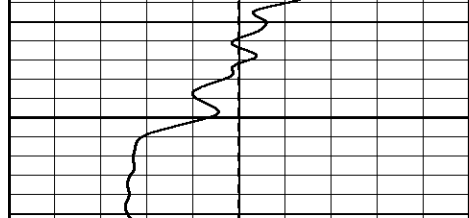




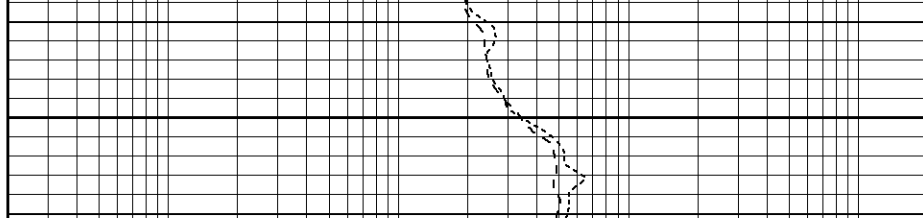
850

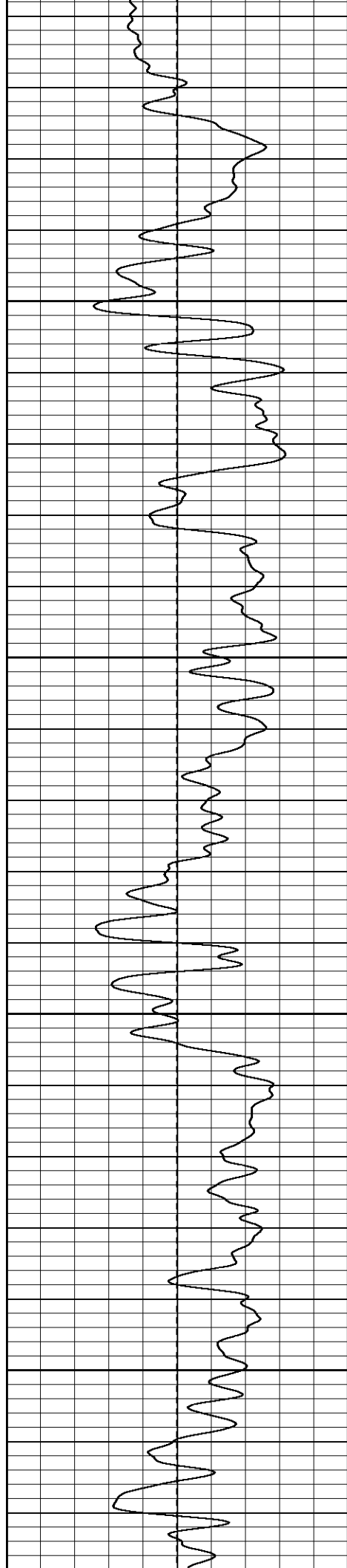
900





1050



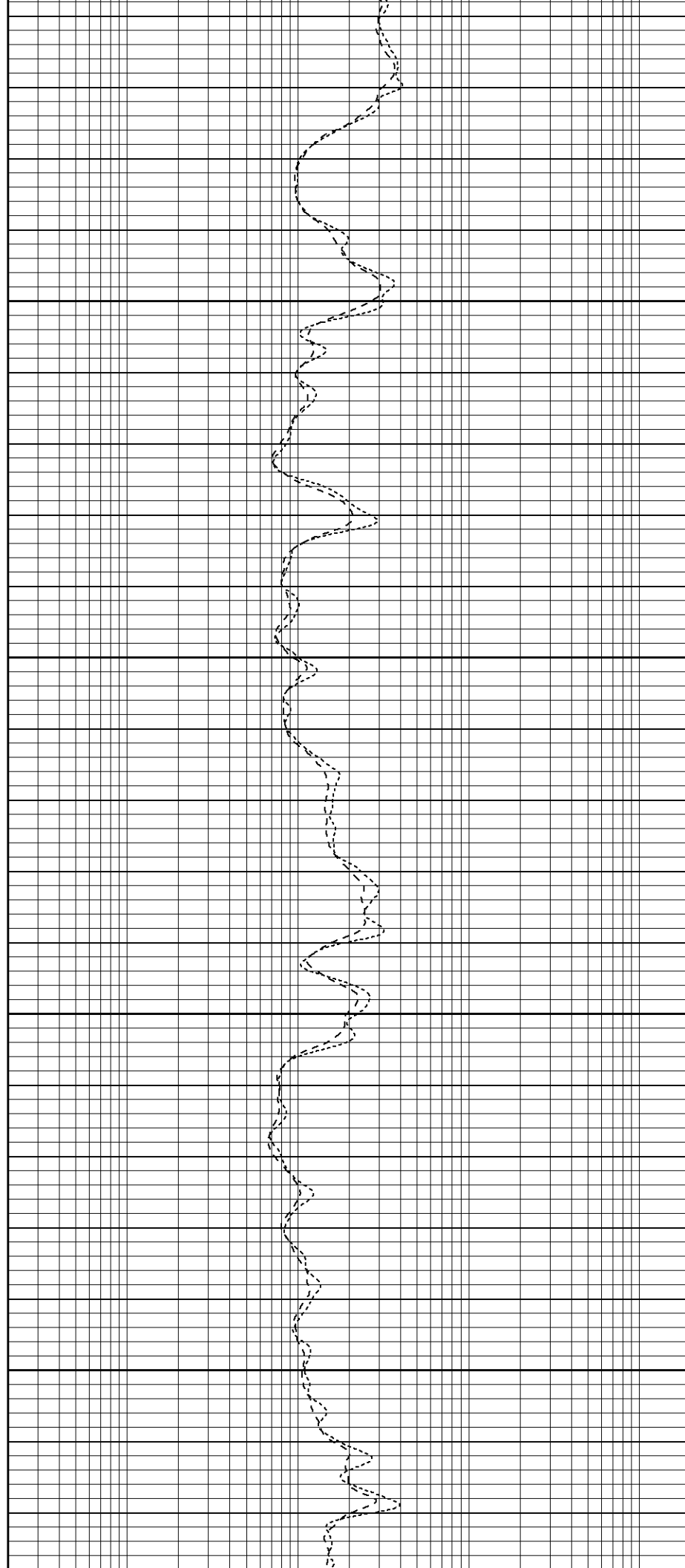


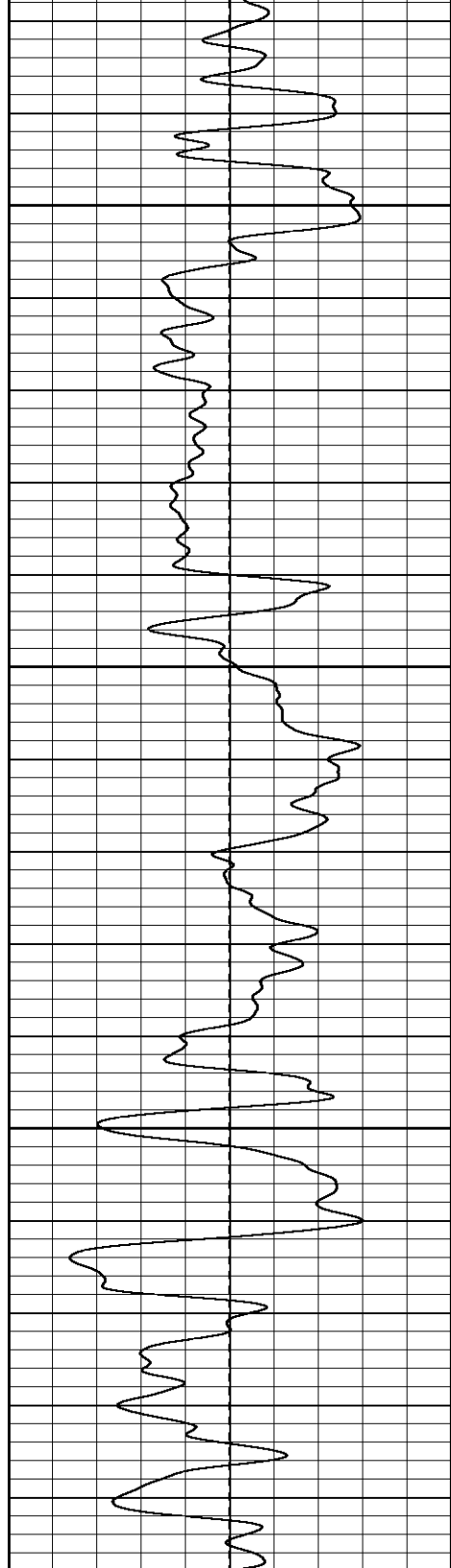
1300

1350

1400

1450

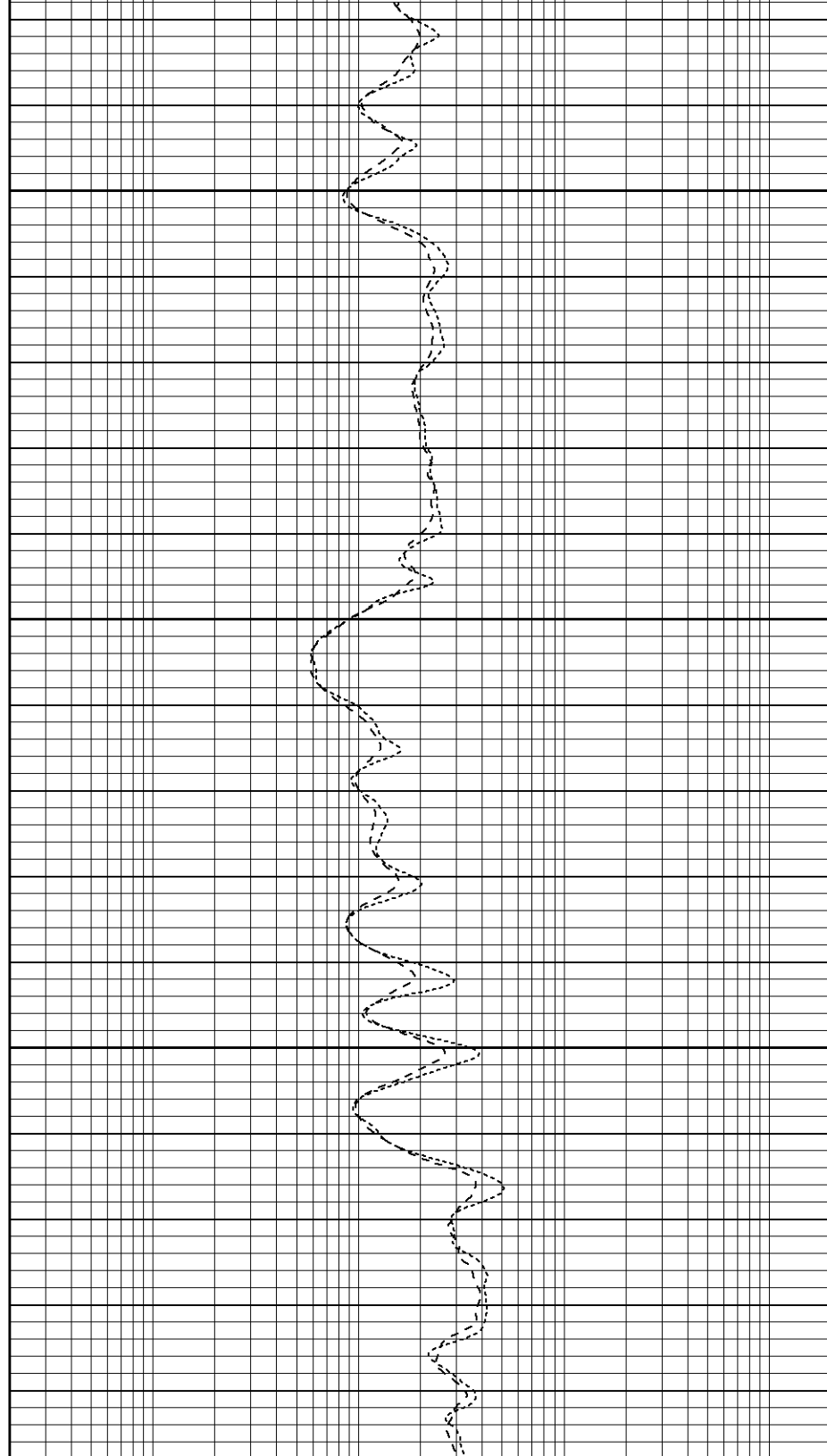


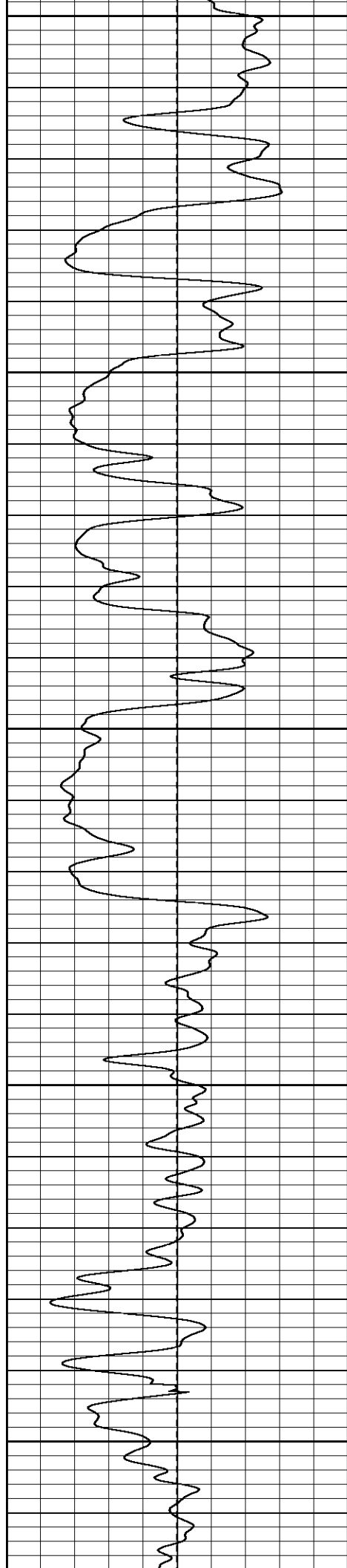


1500

1550

1600





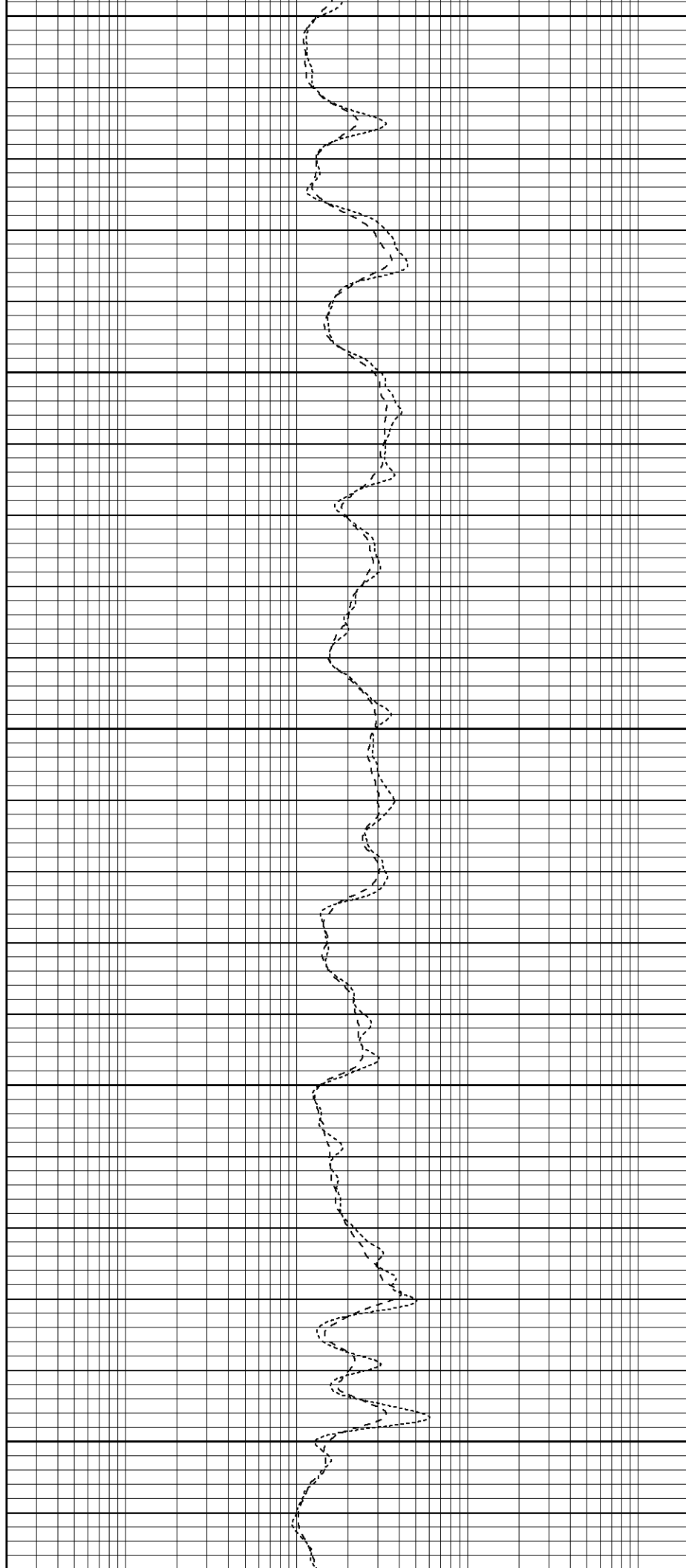
1700

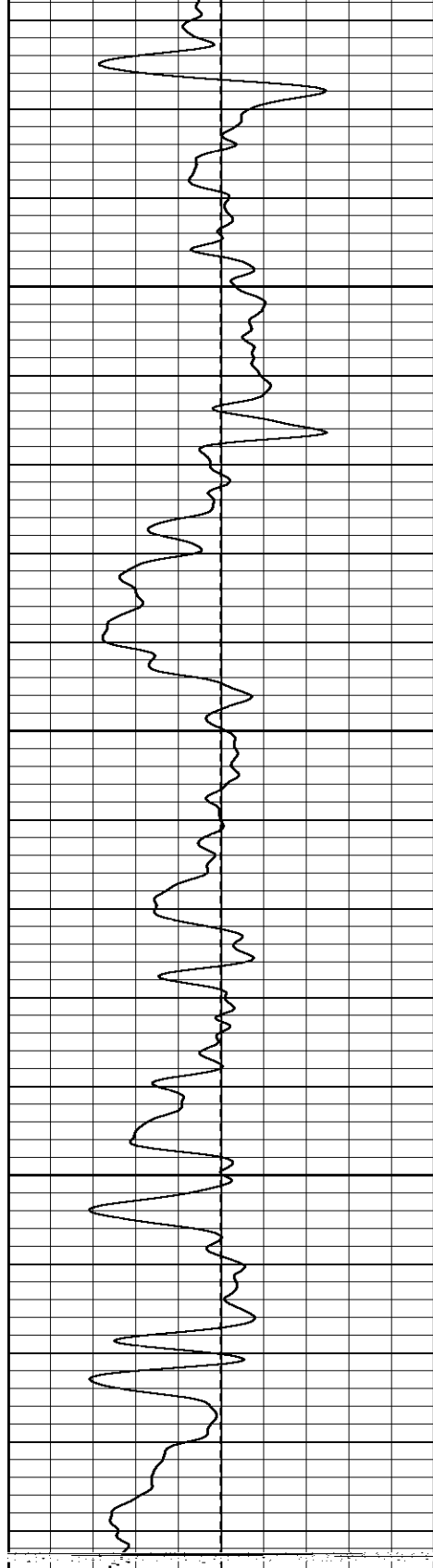
1750

1800

1850

1900

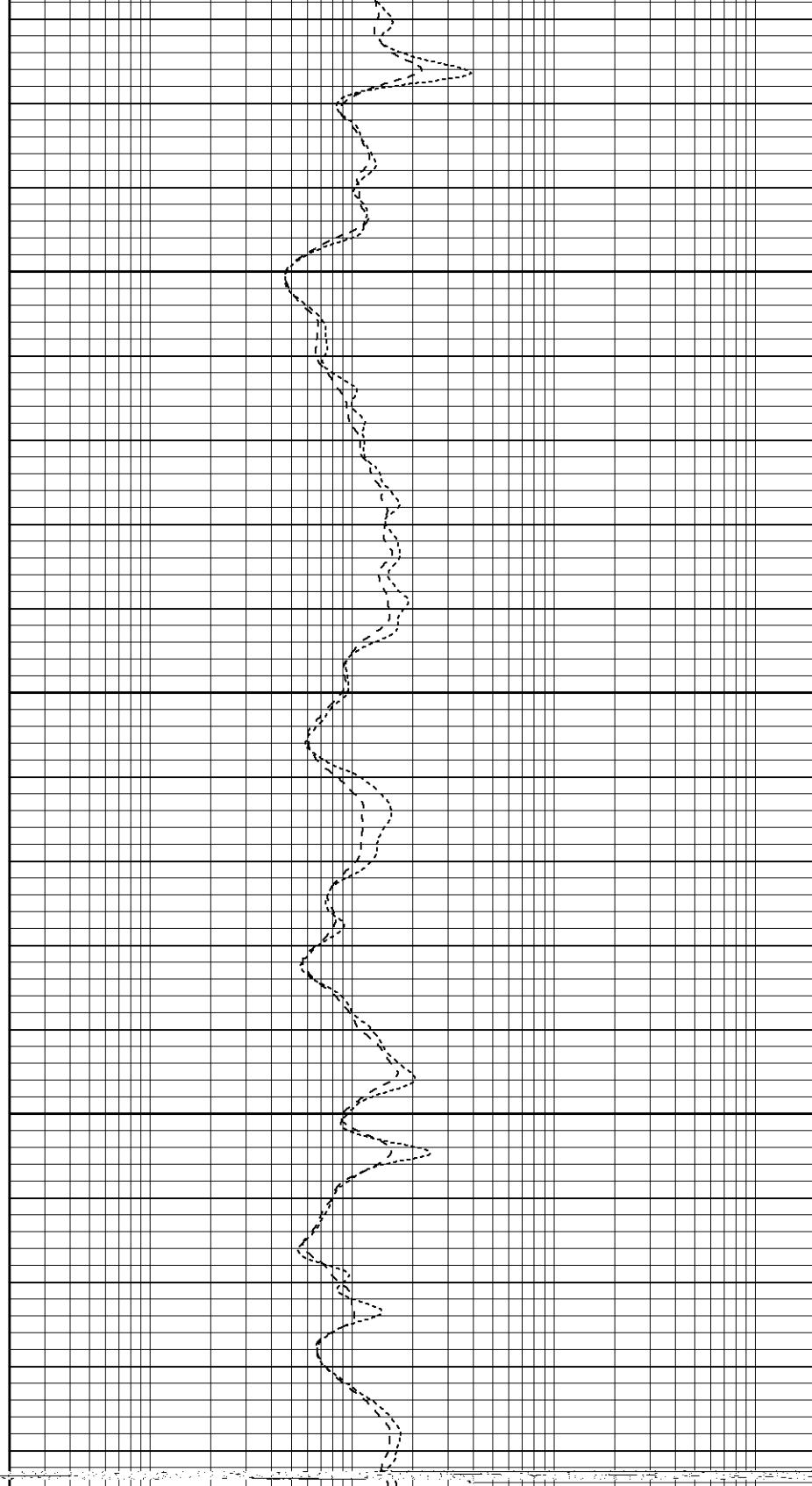


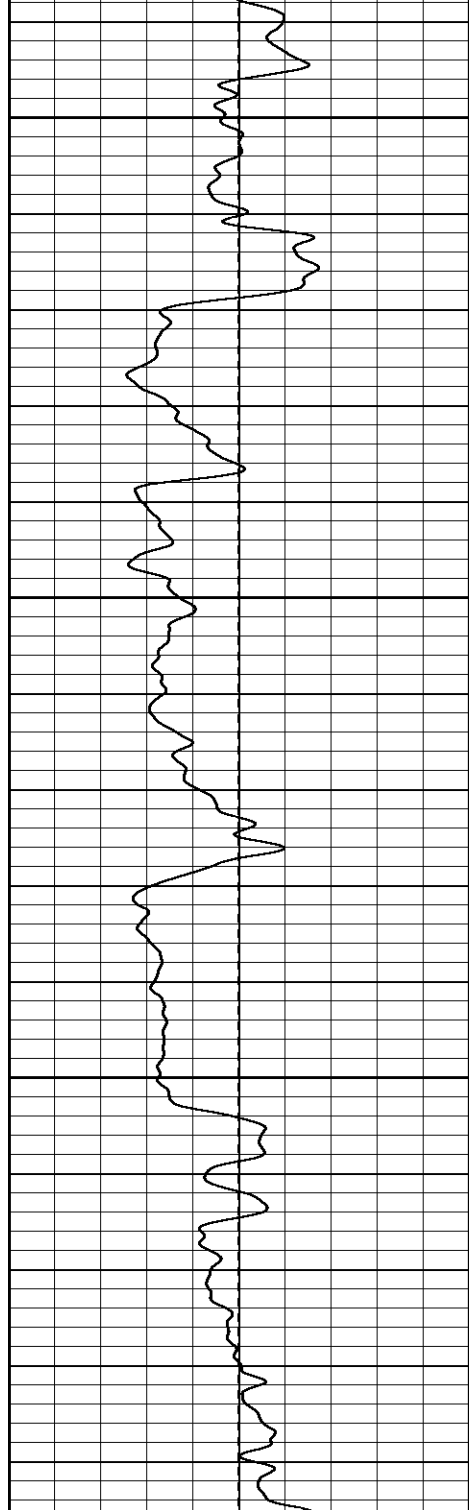


1950

2000

2050

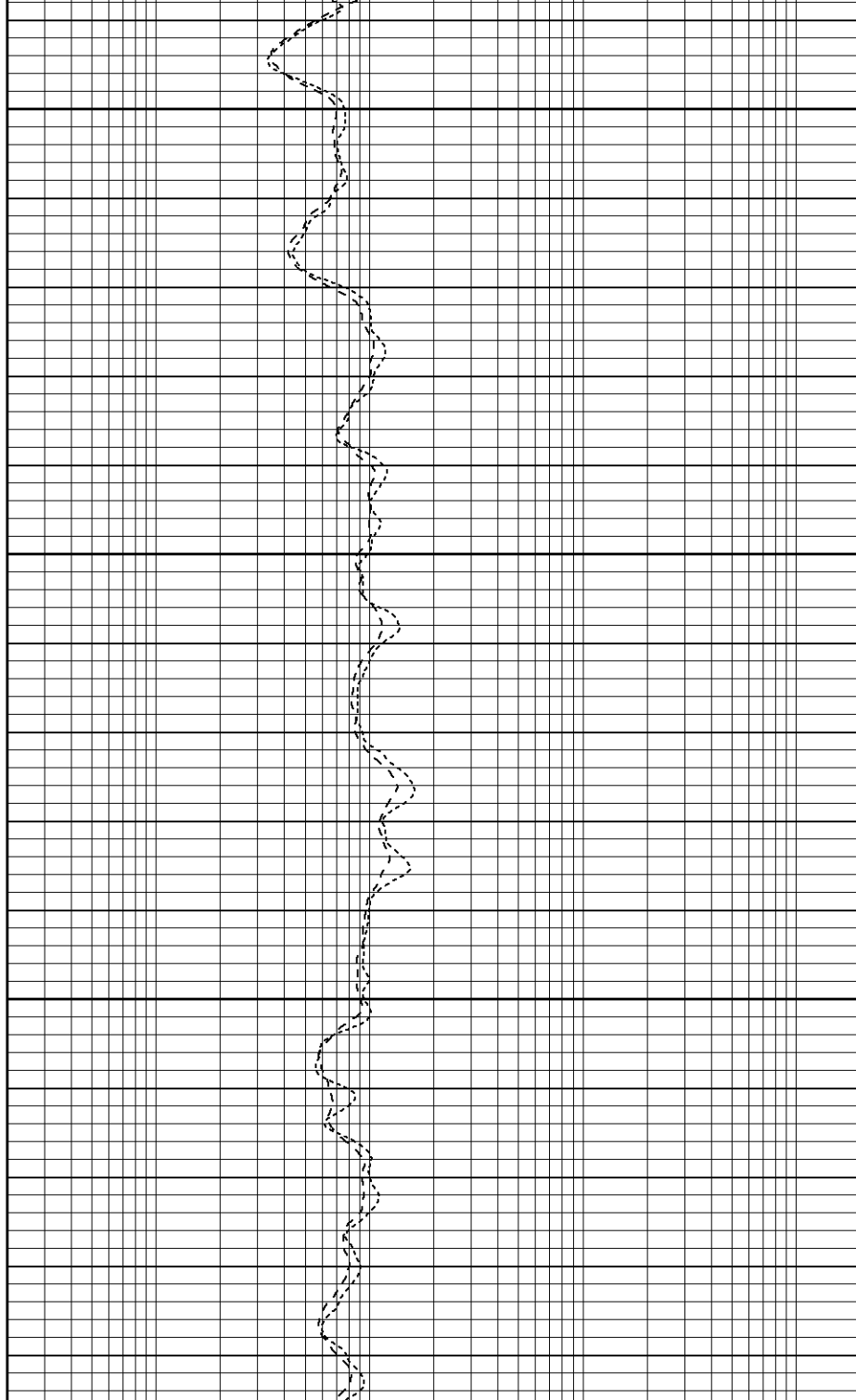


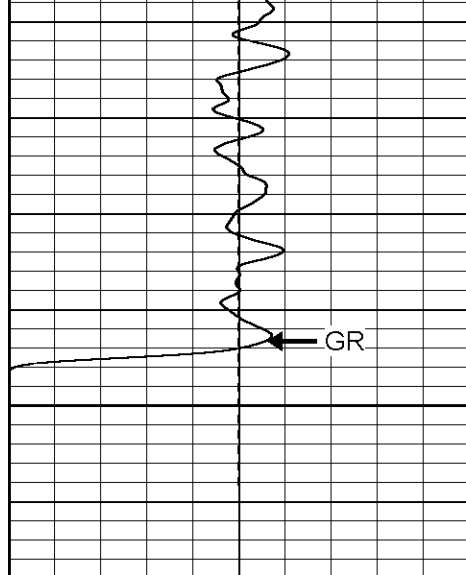


2150

2200

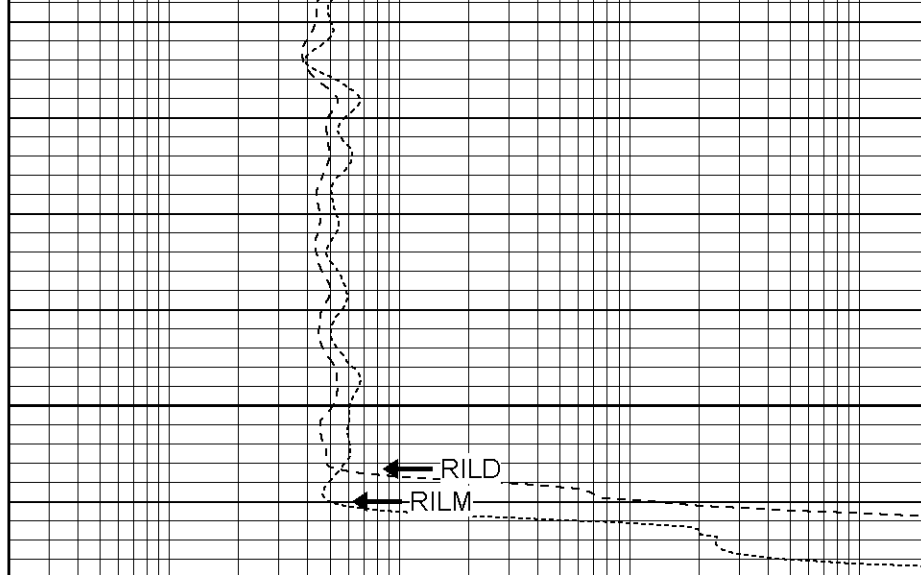
2250





0	GR (GAPI)	200
-100	SP (mV)	100

2400



0.2	RILM (Ohm-m)	2000
0.2	RILD (Ohm-m)	2000
0.2	RLL3 (Ohm-m)	2000

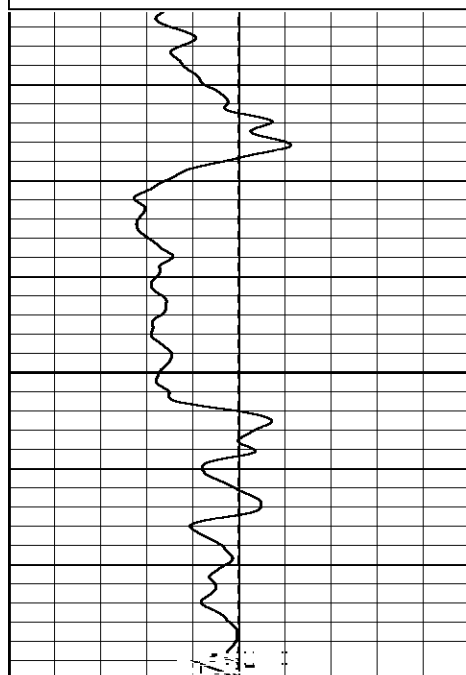
Patterson

Repeat Section

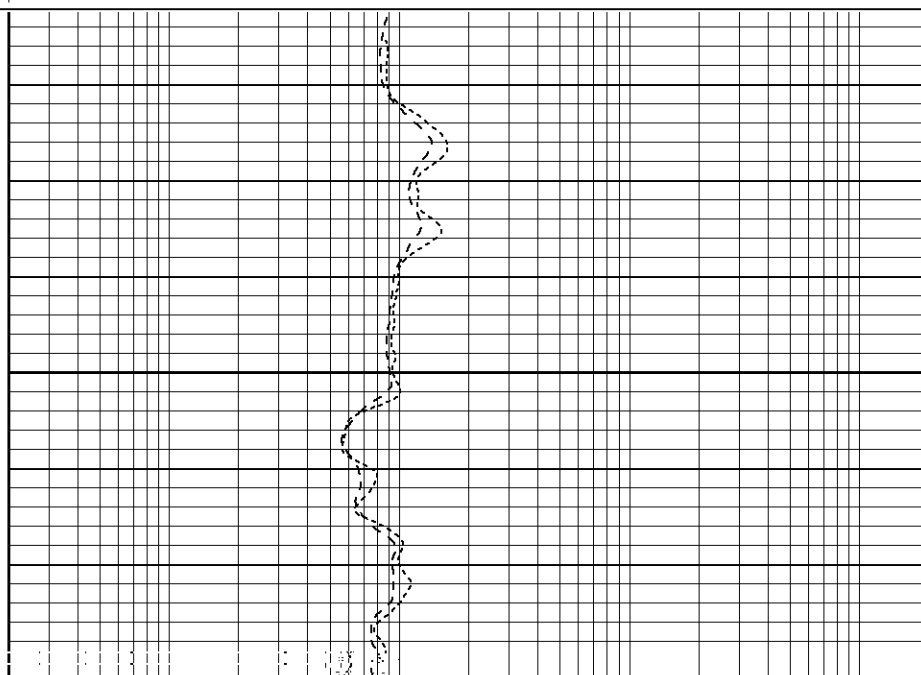
Database File: xtoac1307.db
 Dataset Pathname: pass1.1
 Presentation Format: dil
 Dataset Creation: Mon Aug 14 11:18:57 2006 by Calc Warrior 7.0 STD Ope
 Charted by: Depth in Feet scaled 1:240

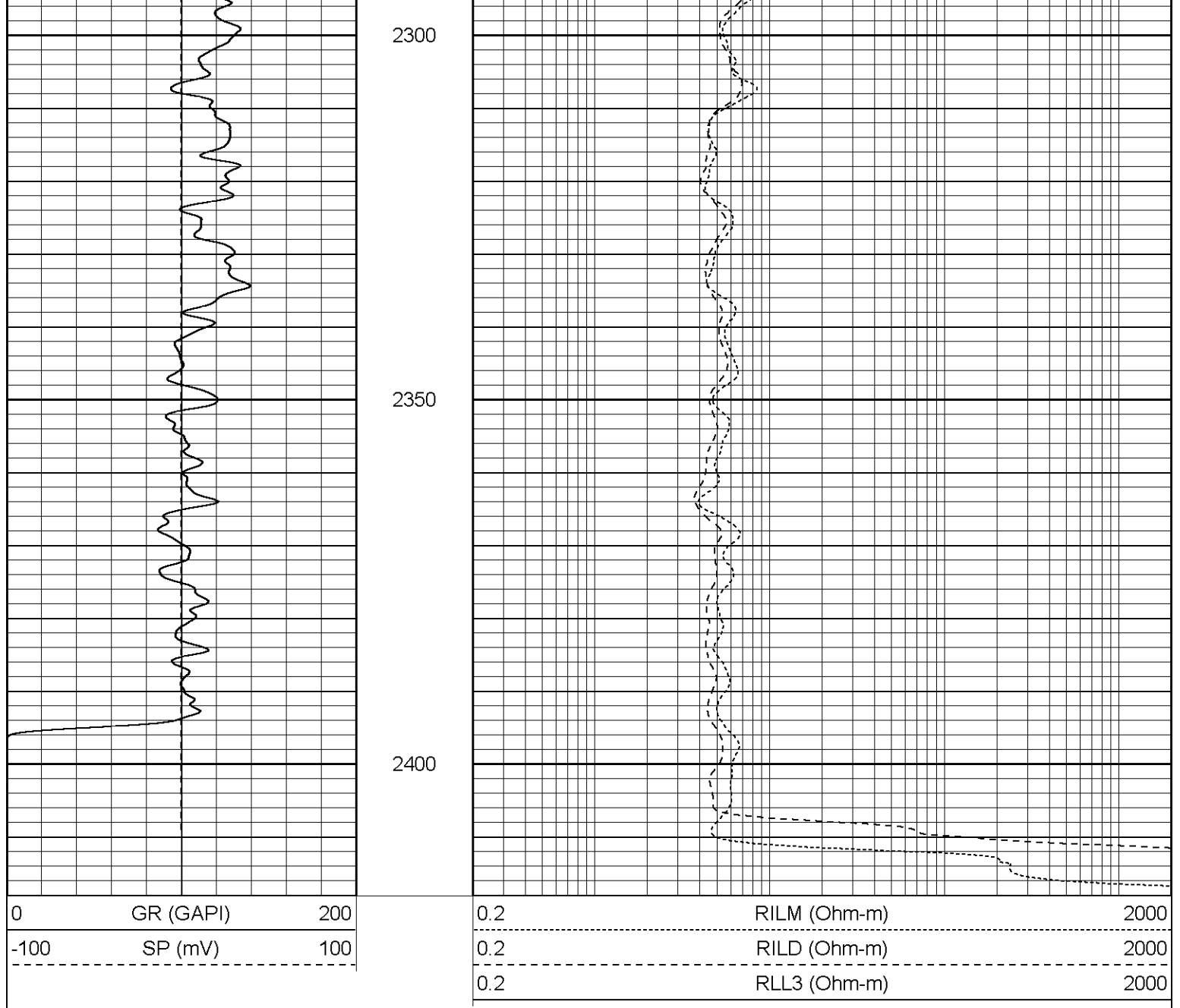
0	GR (GAPI)	200
-100	SP (mV)	100

0.2	RILM (Ohm-m)	2000
0.2	RILD (Ohm-m)	2000
0.2	RLL3 (Ohm-m)	2000



2250





Dual Induction Calibration Report

Serial-Model: 5375-G
 Surface Cal Performed: Mon Aug 14 08:21:41 2006
 Downhole Cal Performed: Mon Aug 14 08:26:53 2006
 After Survey Verification Performed: Sun Dec 04 10:51:51 2005

Surface Calibration

Readings				References			Results	
Loop:	Air	Loop		Air	Loop		m	b
Deep	0.012	0.633	V	0.000	500.000	mmho-m	804.288	-9.342
Medium	0.016	0.752	V	0.000	550.000	mmho-m	747.433	-11.697
Internal:	Zero	Cal		Zero	Cal		m	b
Deep	0.012	0.636	V	0.000	500.000	mmho-m	800.610	-9.578
Medium	0.016	0.752	V	0.000	550.000	mmho-m	747.389	-12.066

Downhole Calibration

Readings				References			Results	
Internal:	Zero	Cal		Zero	Cal		m	b
Deep	1.512	503.799	mmho-m	0.280	502.577	mmho-m	1.000	-1.232
Medium	0.922	551.464	mmho-m	0.370	550.401	mmho-m	0.999	-0.551
Shallow	2.522	0.024	V	500.000	2.000	Ohm-m	0.000	2000.000

After Survey Verification								
Readings				Targets			Results	
Internal:	Zero	Cal		Zero	Cal		m'	b'
Deep	0.000	0.000	mmho-m	1.512	503.799	mmho-m	1.000	-1.232
Medium	0.000	0.000	mmho-m	0.922	551.464	mmho-m	0.999	-0.551
Shallow	0.000	0.000	Ohm-m	500.000	2.000	Ohm-m	1.000	0.000

Gamma Ray Calibration Report								
Serial Number:			2001					
Tool Model:			OH					
Performed:			Tue Aug 08 07:50:36 2006					
Calibrator Value:			1.0	GAPI				
Background Reading:			0.0	cps				
Calibrator Reading:			1.0	cps				
Sensitivity:			0.1800	GAPI/cps				

Sensor	Offset (ft)	Schematic	Description	Len (ft)	OD (in)	Wt (lb)
CHD	25.08		None	0.75	1.50	5.00
GR	22.83		GR-OH (2001) SIE	3.50	3.25	40.00
CILD SP	10.60 10.60		DIL-G (5375) Gearhart	20.83	4.00	345.00
CILM	6.89					
RLL3	1.70					

Dataset:		/field/well/run/_plots/_jobs_/dil				
Total Length:		25.08 ft				
Total Weight:		390.00 lb				
O.D.		4.00 in				