

**Patterson**

**DUAL  
INDUCTION  
LOG**

Company XTO Energy, Inc.		Company XTO Energy, Inc.	
Well Apache Canyon 05-04		Well Apache Canyon 05-04	
Field Purgatoire River		Field Purgatoire River	
County Las Animas		County Las Animas	
State CO		State CO	
Location: API # : 05 071 08817 00		Other Services CDL NEUTRON	
SEC 5 TWP 34S RGE 67W 965' FNL & 641' FWL		Elevation	
Permanent Datum	Ground Level	Elevation	7838'
Log Measured From	Ground Level		
Drilling Measured From	Ground Level		
Date 7-12-06			
Run Number	One		
Depth Driller	2420'		
Depth Logger	2420'		
Bottom Logged Interval	2418'		
Top Log Interval	Surface Casing		
Casing Driller	8 5/8" @ 230'		
Casing Logger	225'		
Bit Size	7 7/8"		
Type Fluid in Hole	Water		
Density / Viscosity	///		
pH / Fluid Loss	///		
Source of Sample	///		
Rm @ Meas. Temp	///		
Rmf @ Meas. Temp	///		
Rmc @ Meas. Temp	///		
Source of Rmf / Rmc	///		
Rm @ BHT	///		
Time Circulation Stopped	11:30		
Time Logger on Bottom	4:40		
Maximum Recorded Temperature	114F		
Equipment Number	T720		
Location	Trinidad		
Recorded By	Worley		
Witnessed By	Mr. Don Johnson		

<<< Fold Here >>>

All interpretations are opinions based on inferences from electrical or other measurements and we cannot and do not guarantee the accuracy or correctness of any interpretation, and we shall not, except in the case of gross or willful negligence on our part, be liable or responsible for any loss, costs, damages, or expenses incurred or sustained by anyone resulting from any interpretation made by any of our officers, agents or employees. These interpretations are also subject to our general terms and conditions set out in our current Price Schedule.

**Comments**

Well Directions:  
First Bosque Entrance, up Cherry Canyon, at Y go left, stay on main road 6.2 miles, turn left, drive thru ac 31-16, dead end on location.

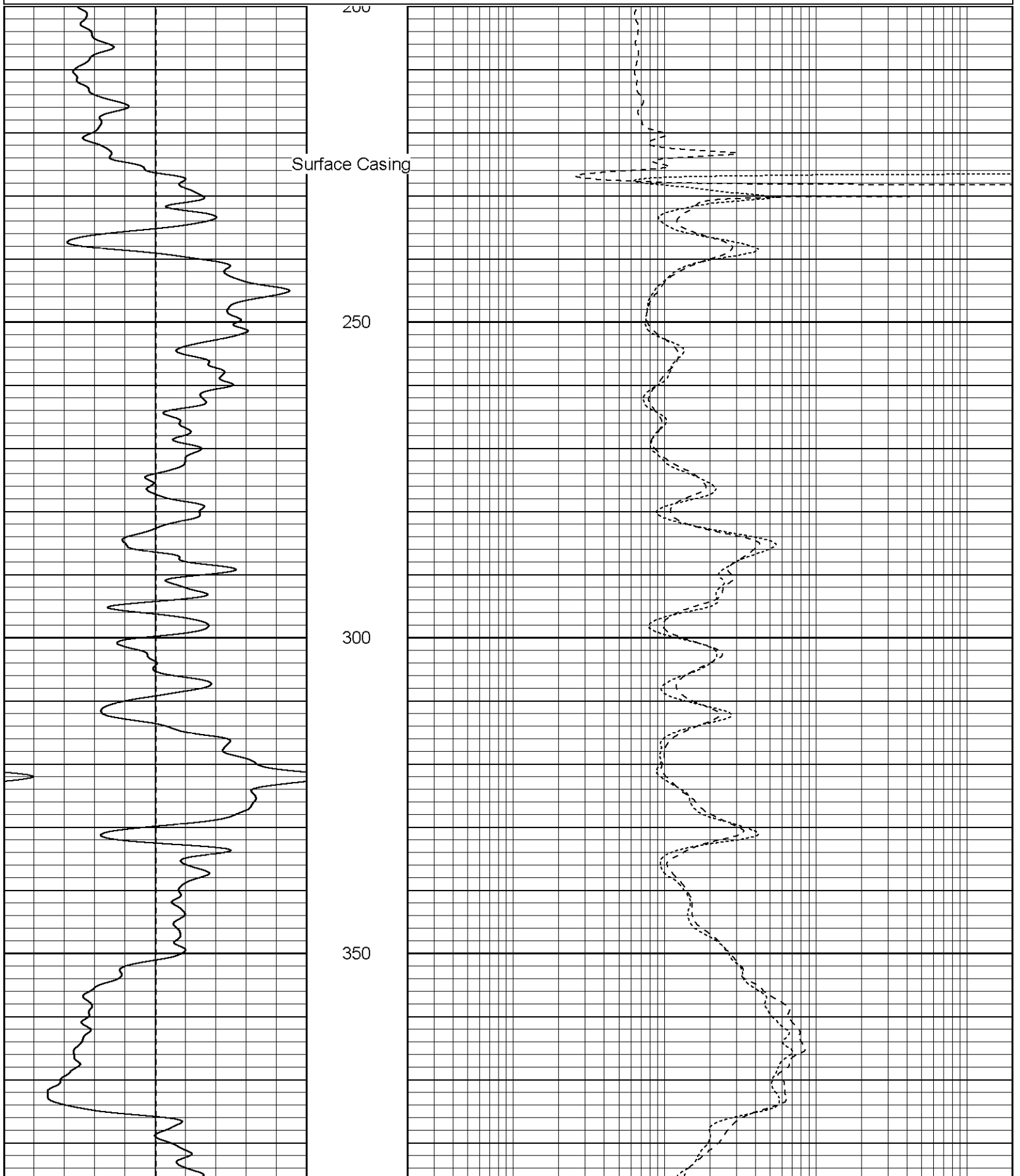
**Patterson**

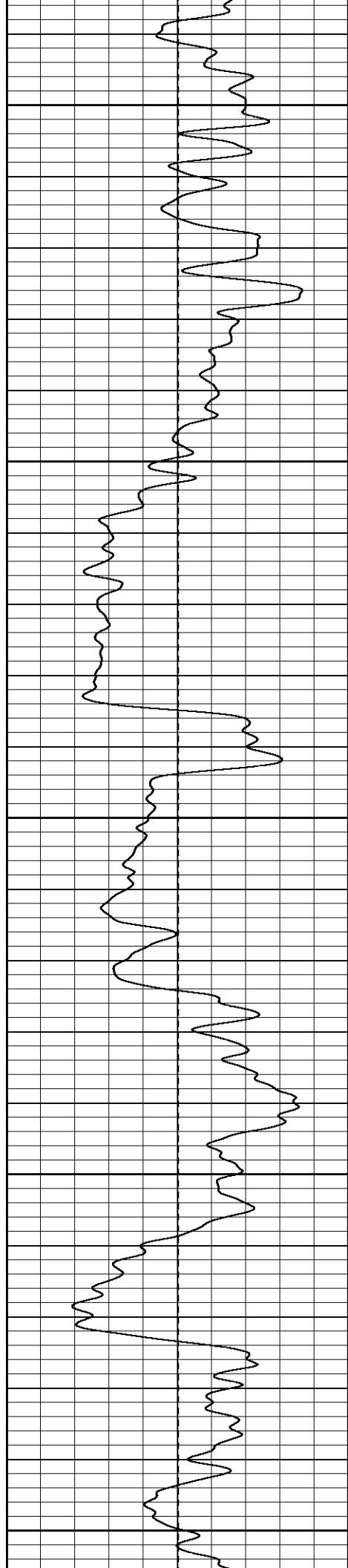
**Main Pass**

Database File: xtoac05-04.db  
Dataset Pathname: pass3.2  
Presentation Format: dil  
Dataset Creation: Wed Jul 12 17:36:03 2006 by Calc Warrior 7.0 STD Ope  
Charted by: Depth in Feet scaled 1:240

0	GR (GAPI)	200
-100	SP (mV)	100

0.2	RILM (Ohm-m)	2000
0.2	RILD (Ohm-m)	2000
0.2	RLL3 (Ohm-m)	2000





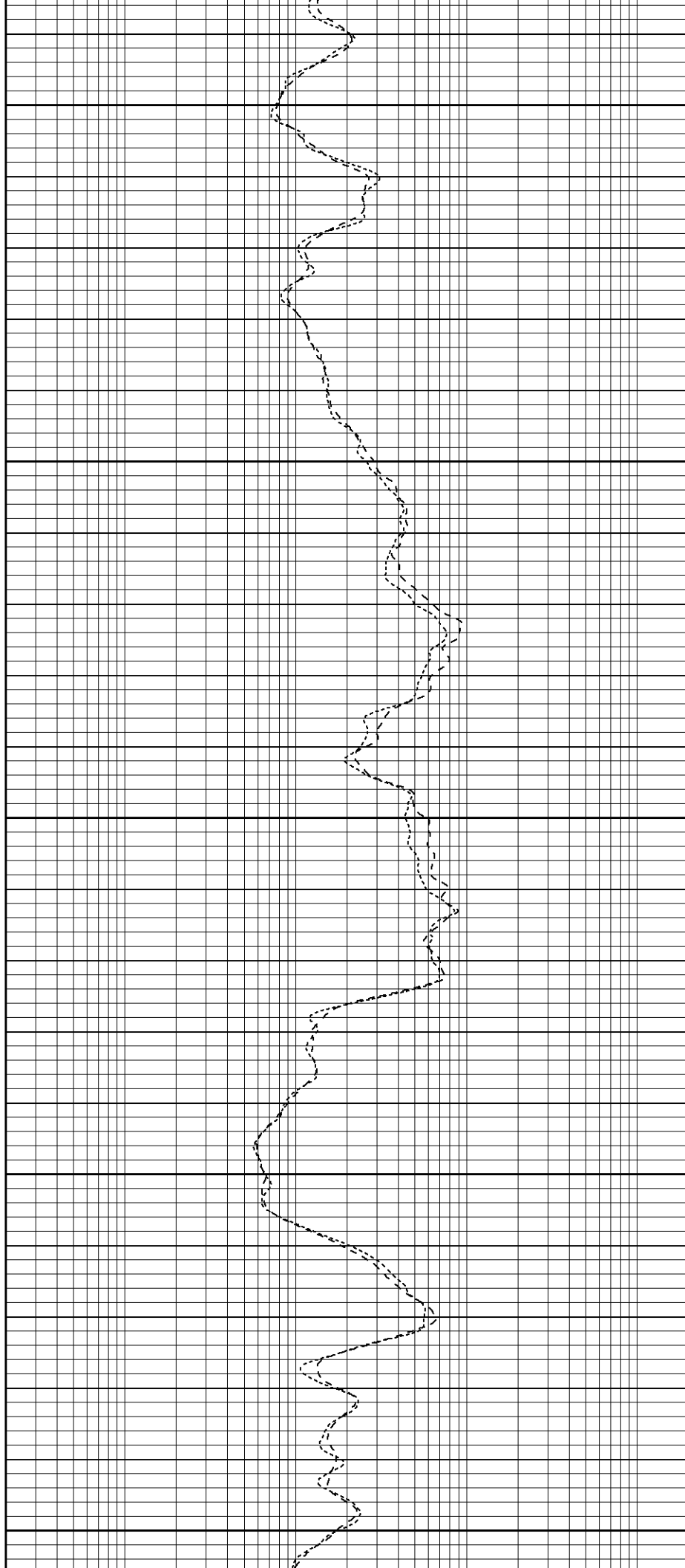
400

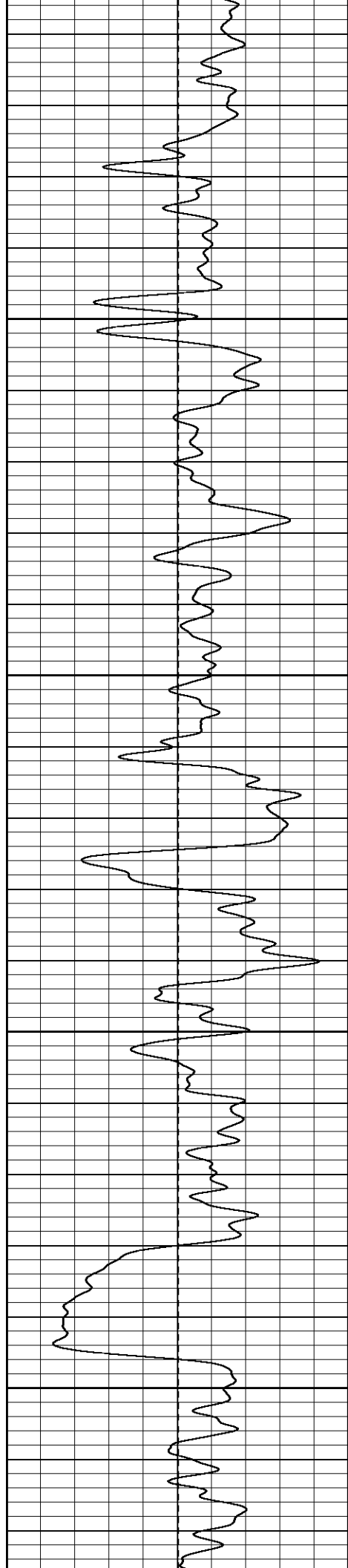
450

500

550

600



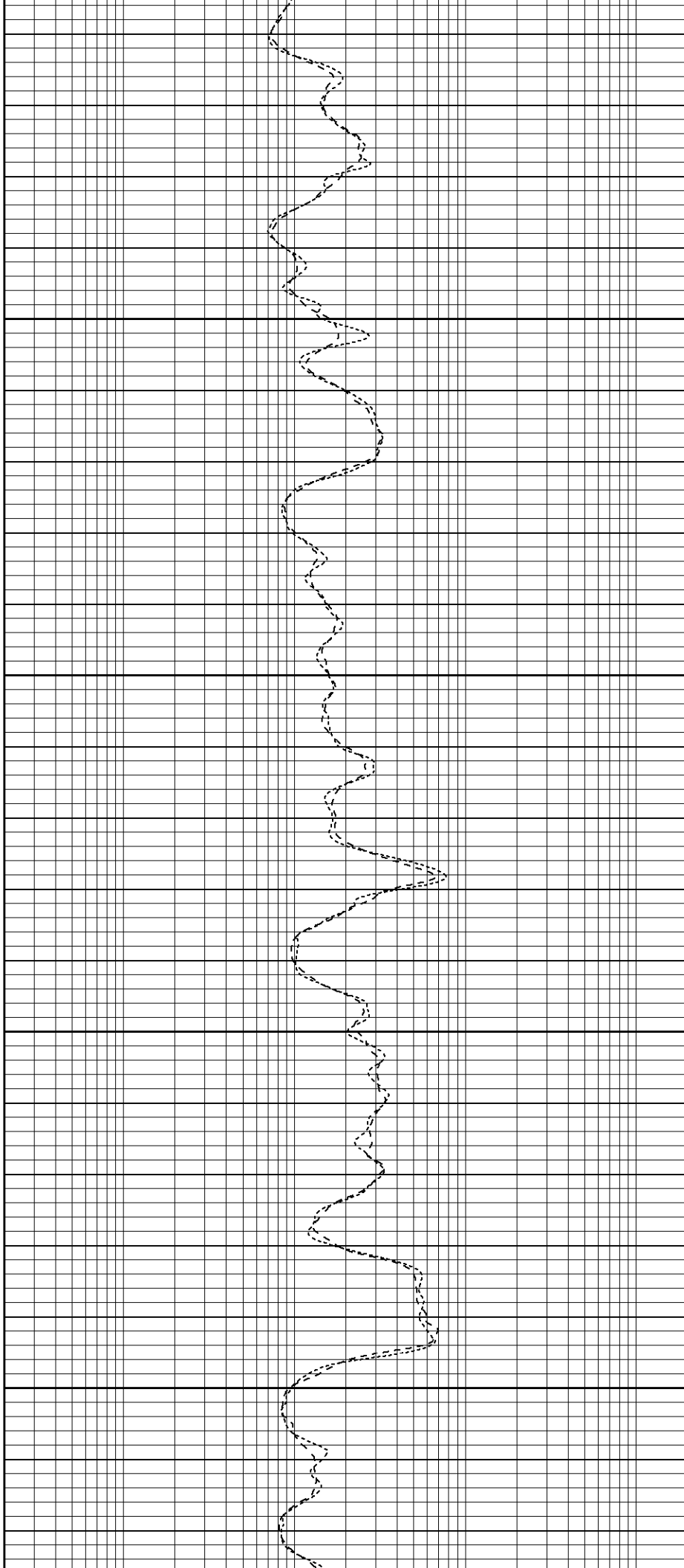


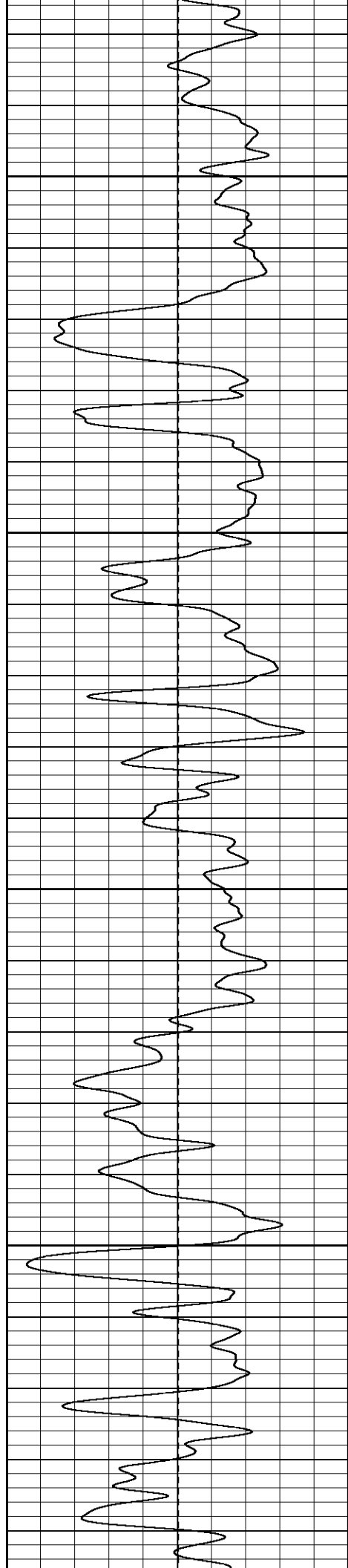
650

700

750

800



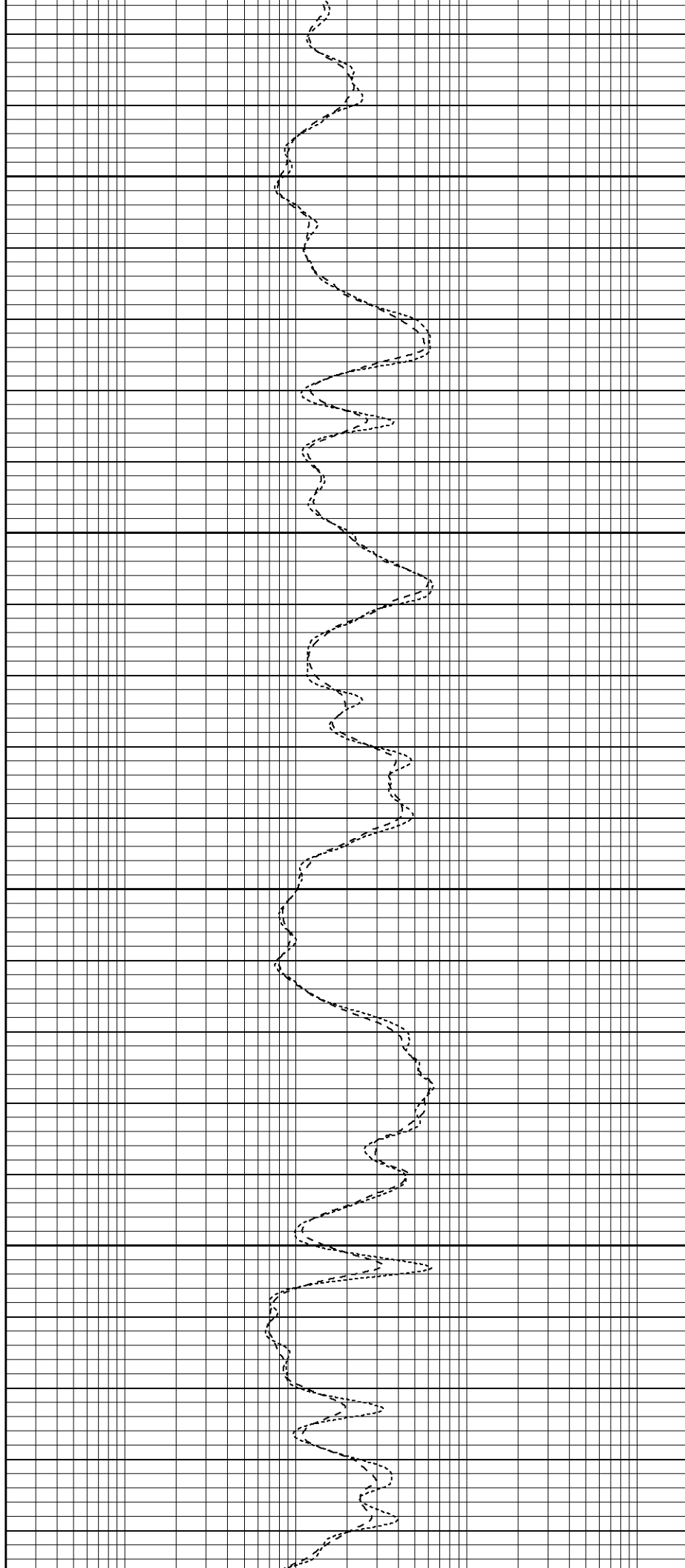


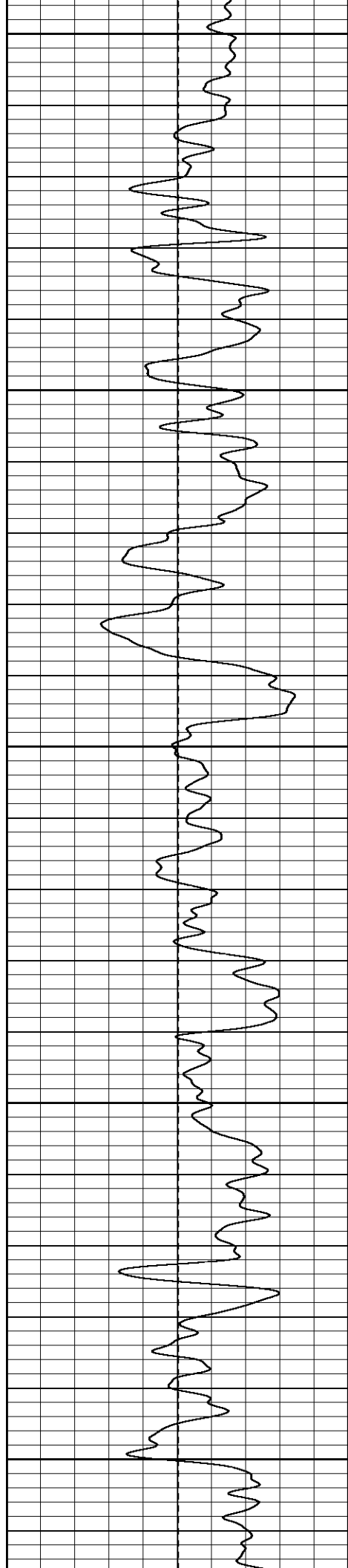
850

900

950

1000





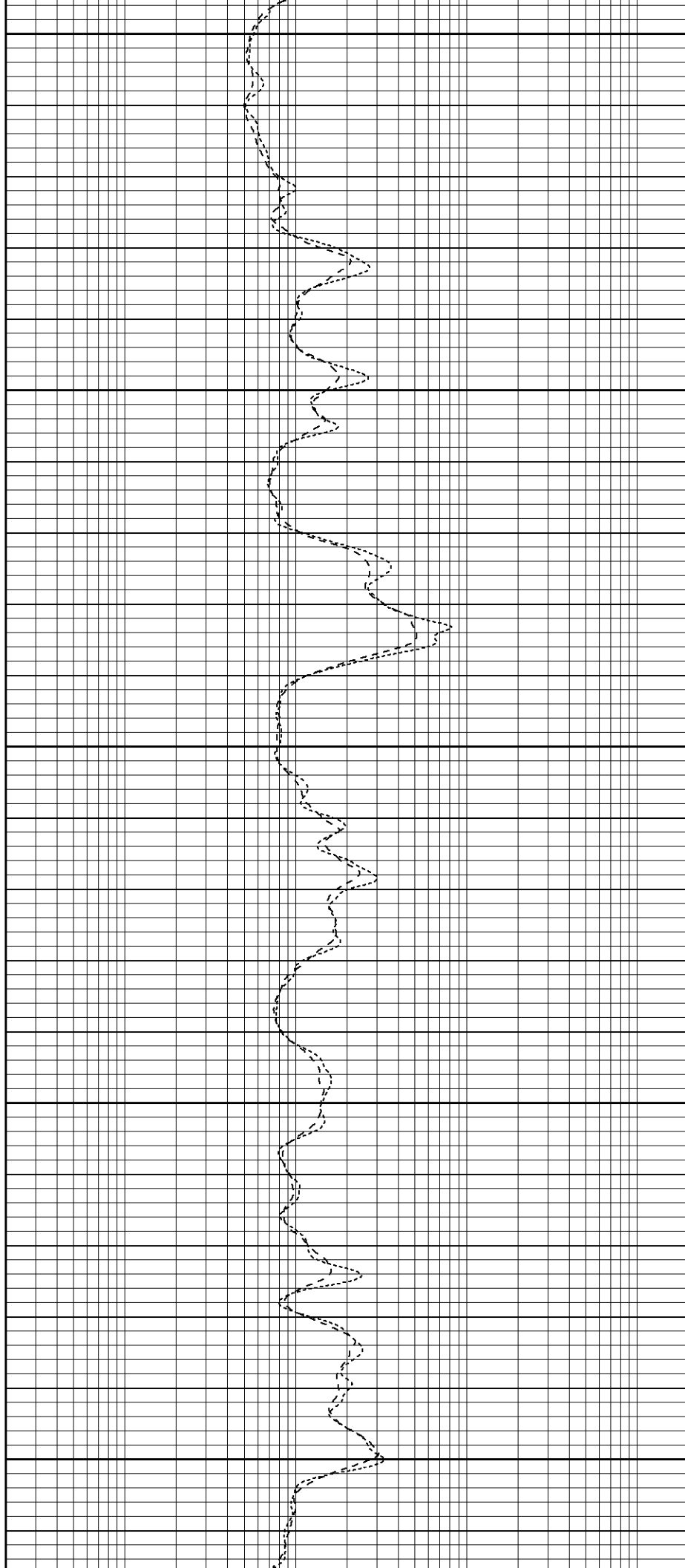
1050

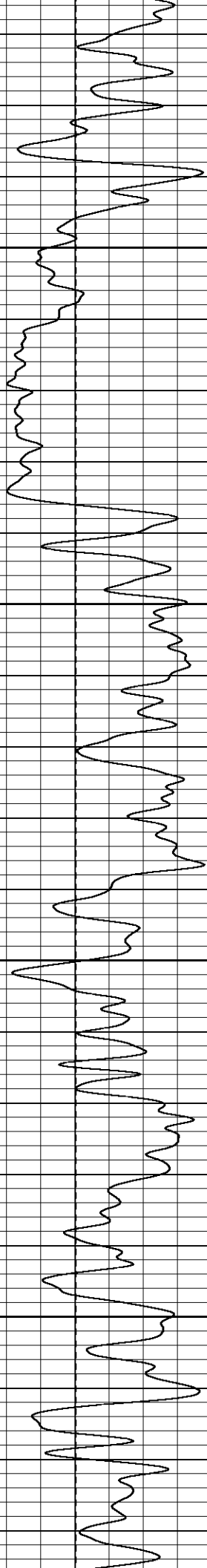
1100

1150

1200

1250



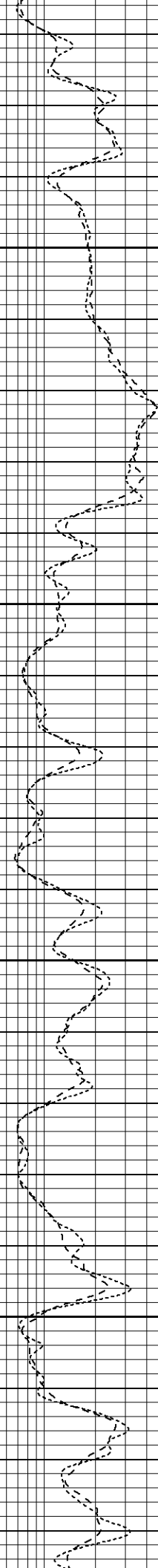


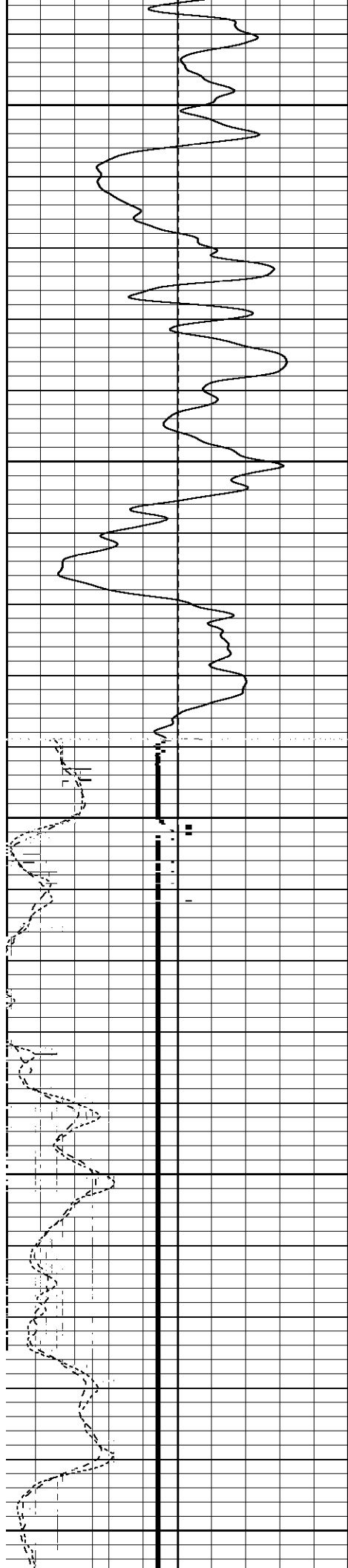
1300

1350

1400

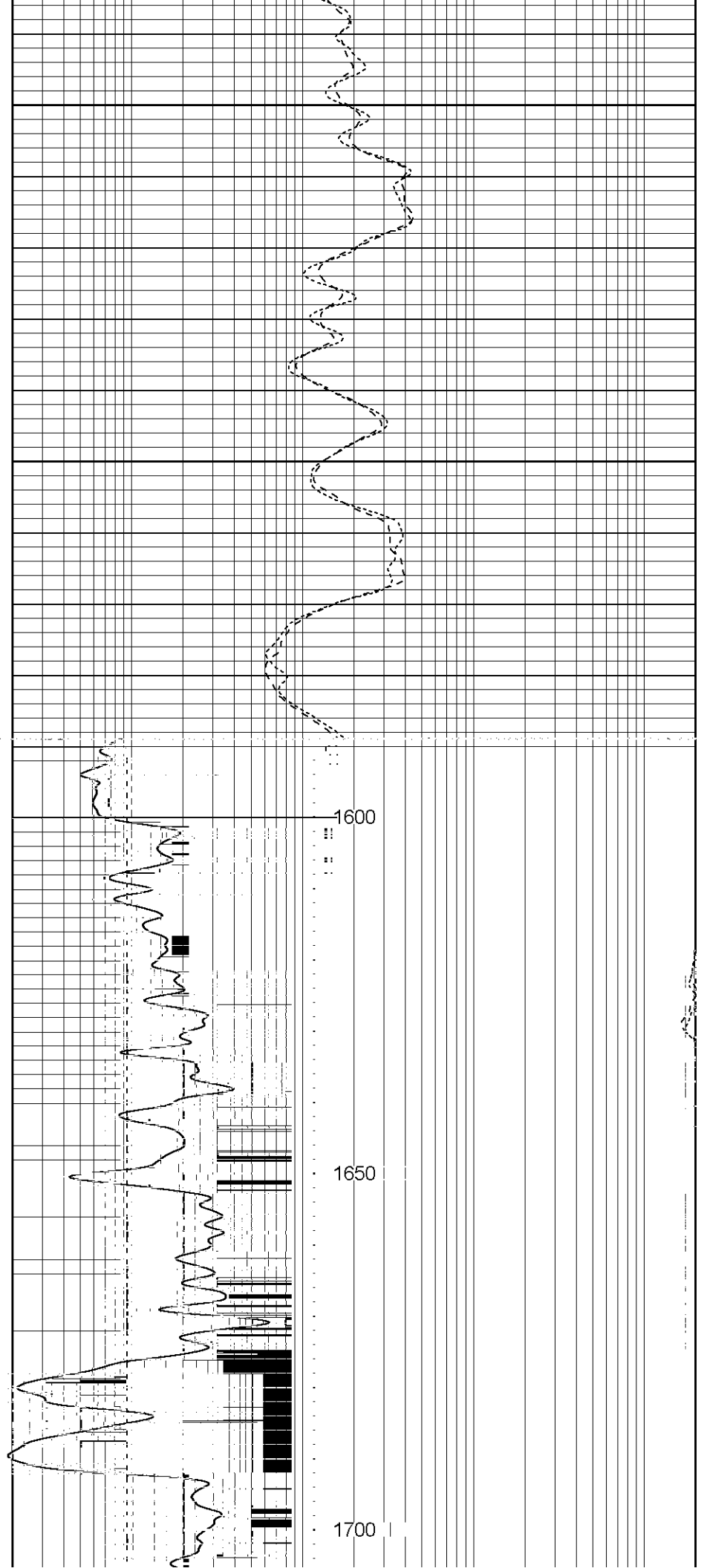
1450





1500

1550

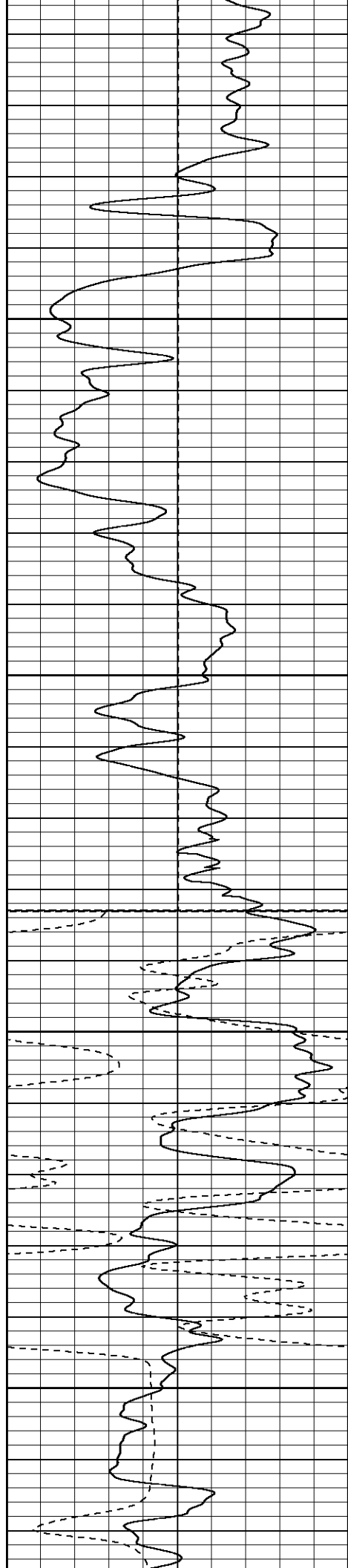


1600

1650

1700



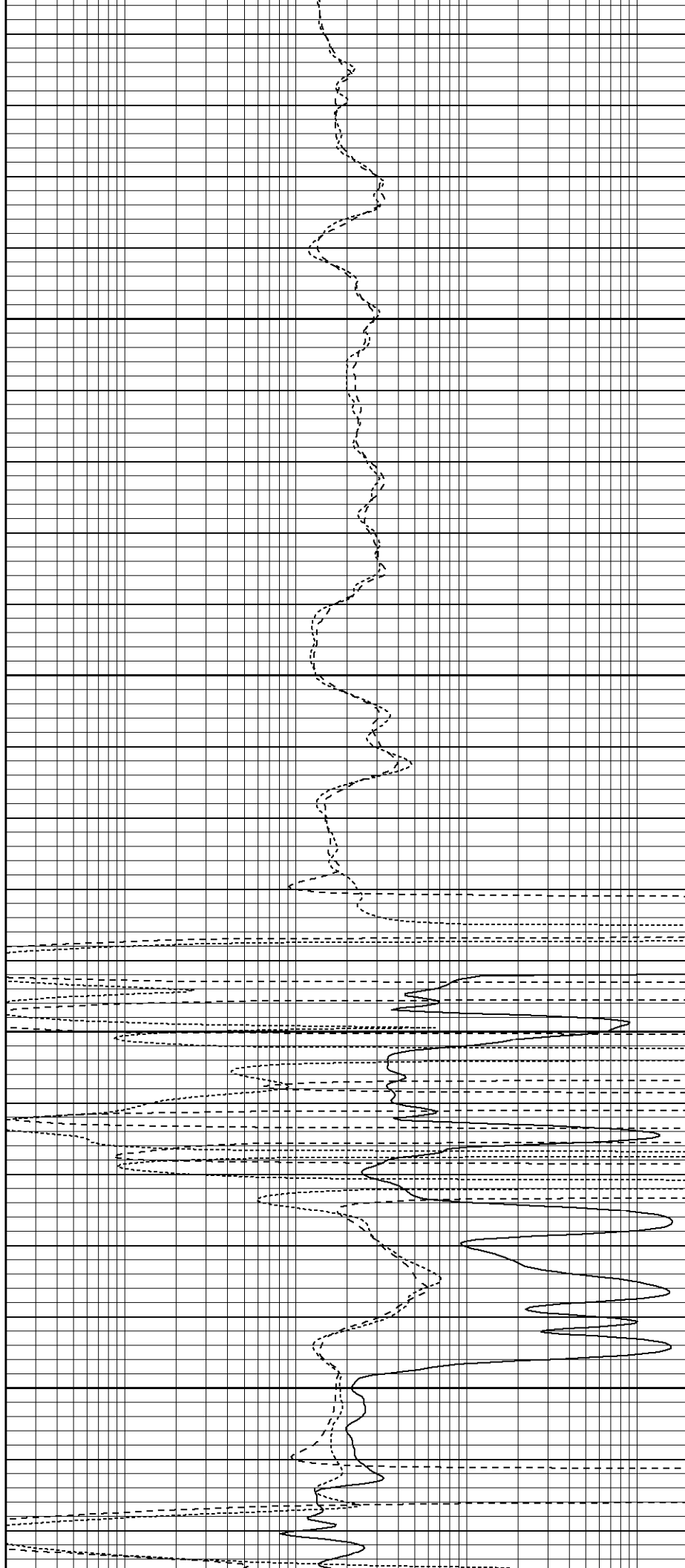


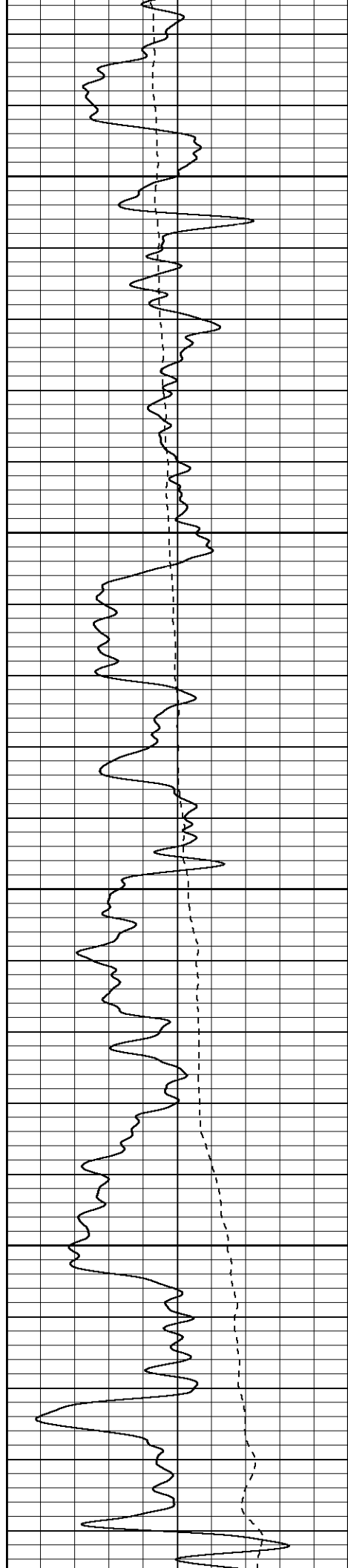
1750

1800

1850

Fluid Level  
1900



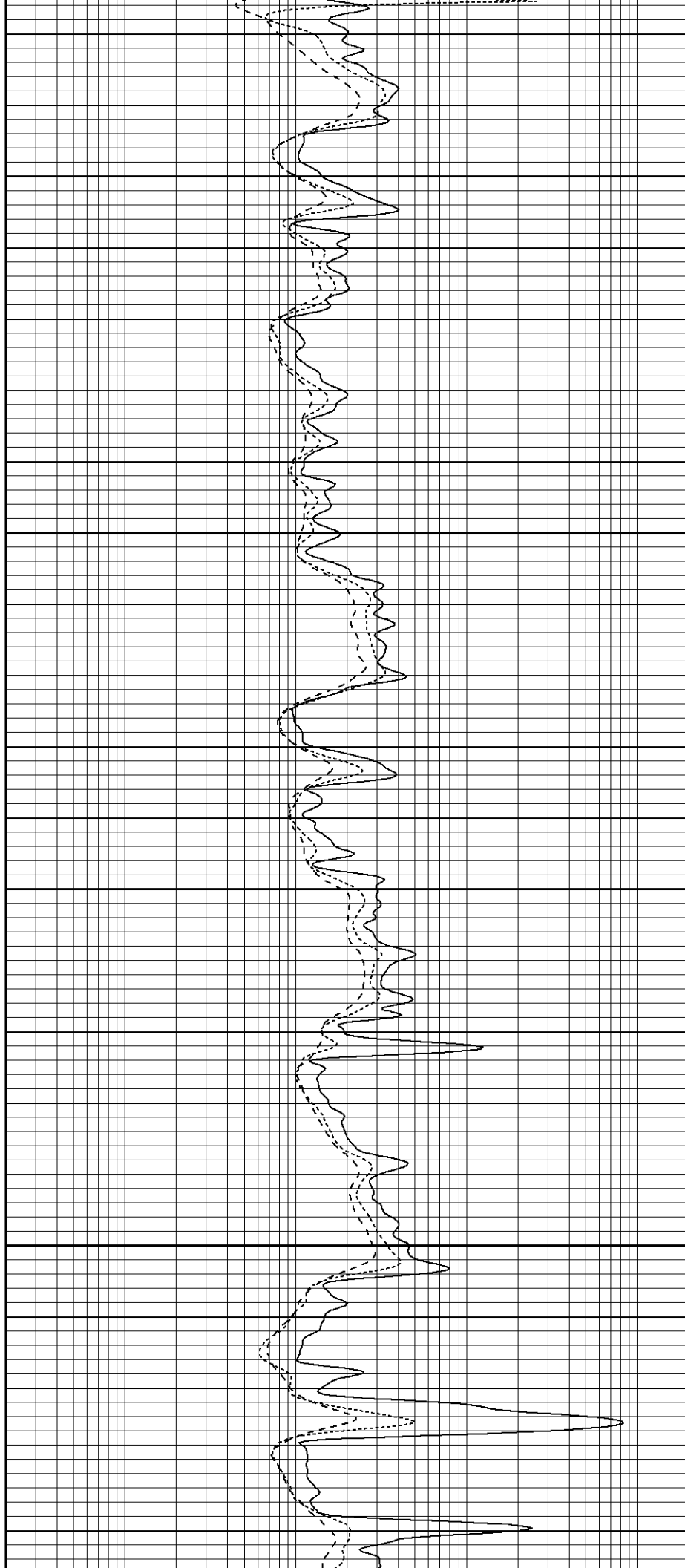


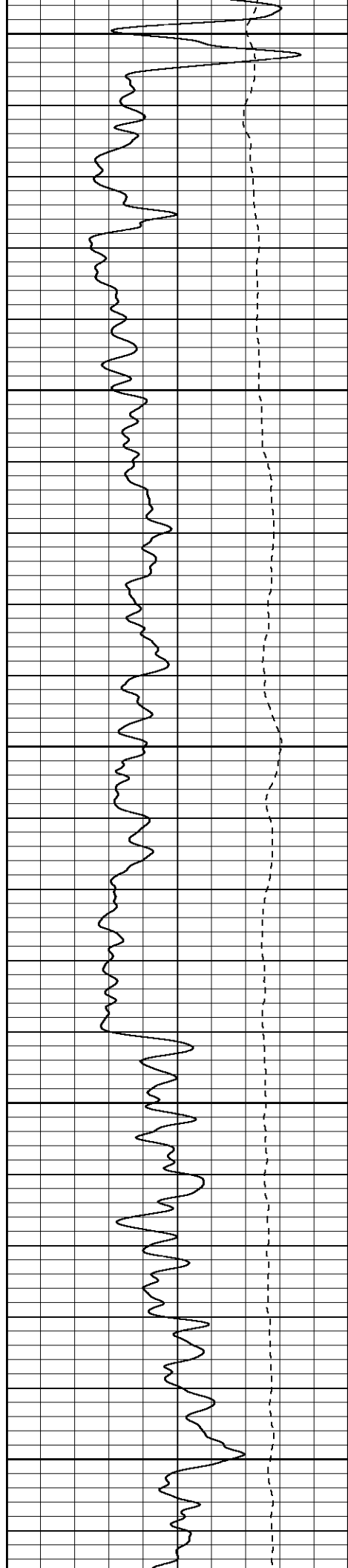
1950

2000

2050

2100





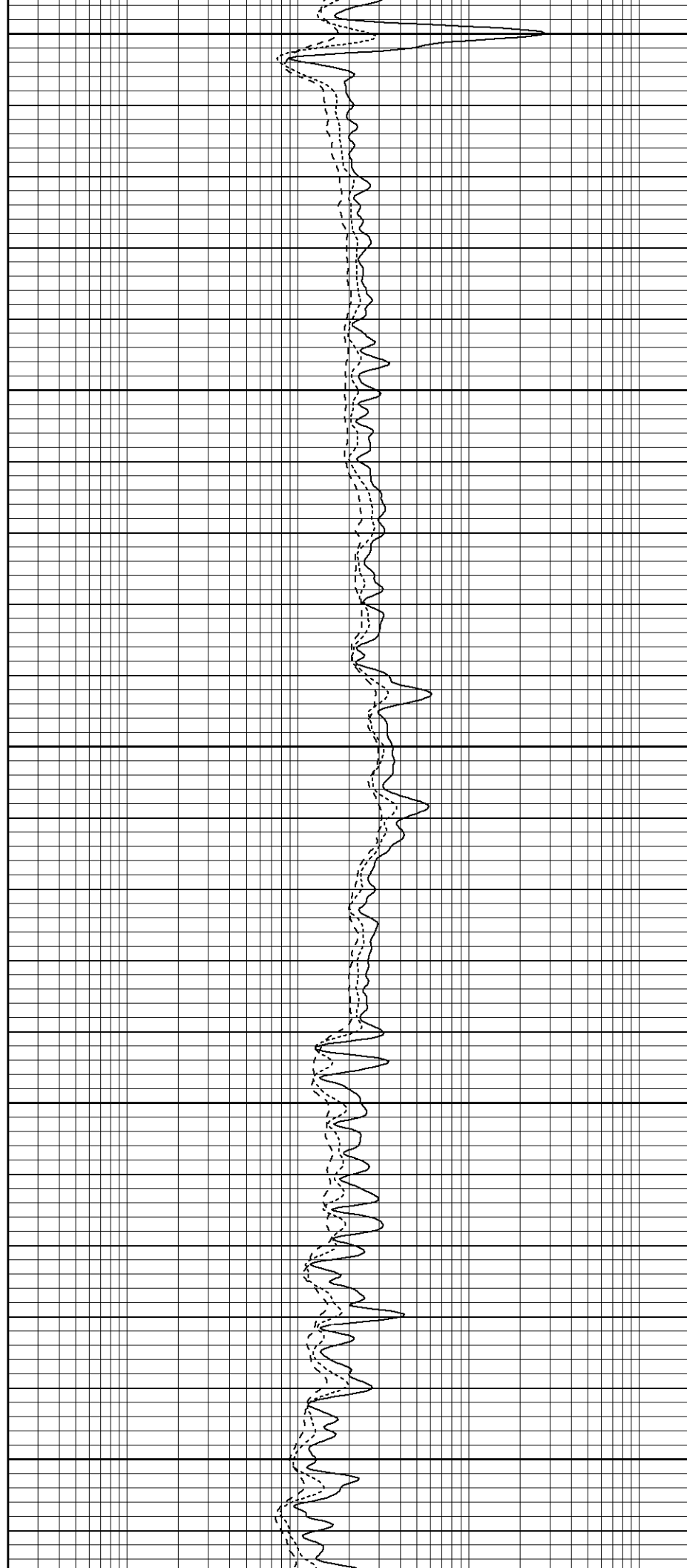
2150

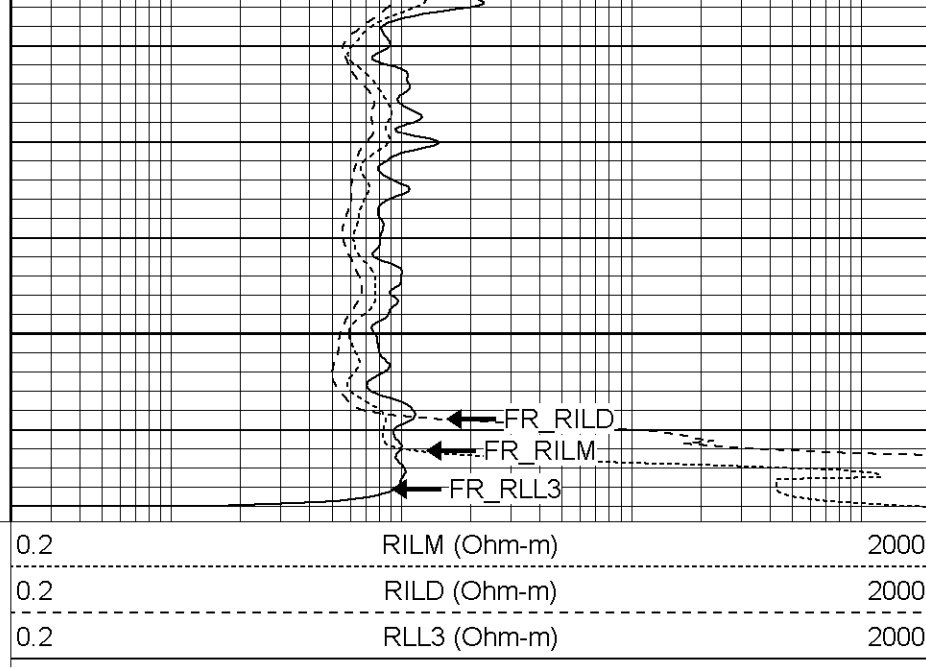
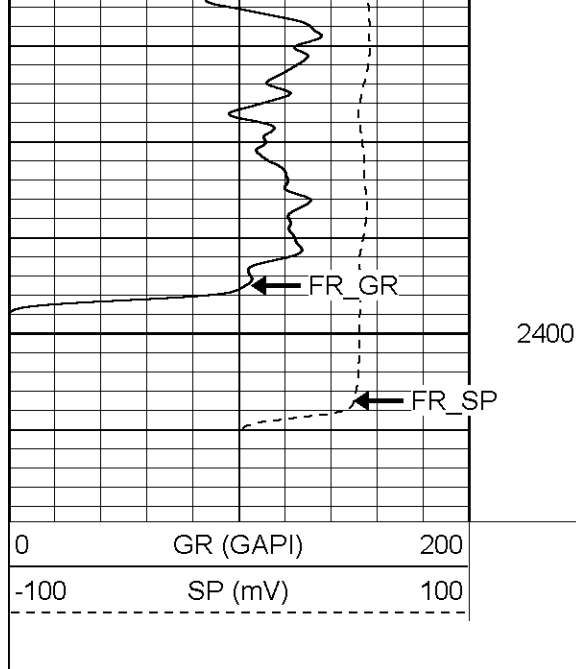
2200

2250

2300

2350





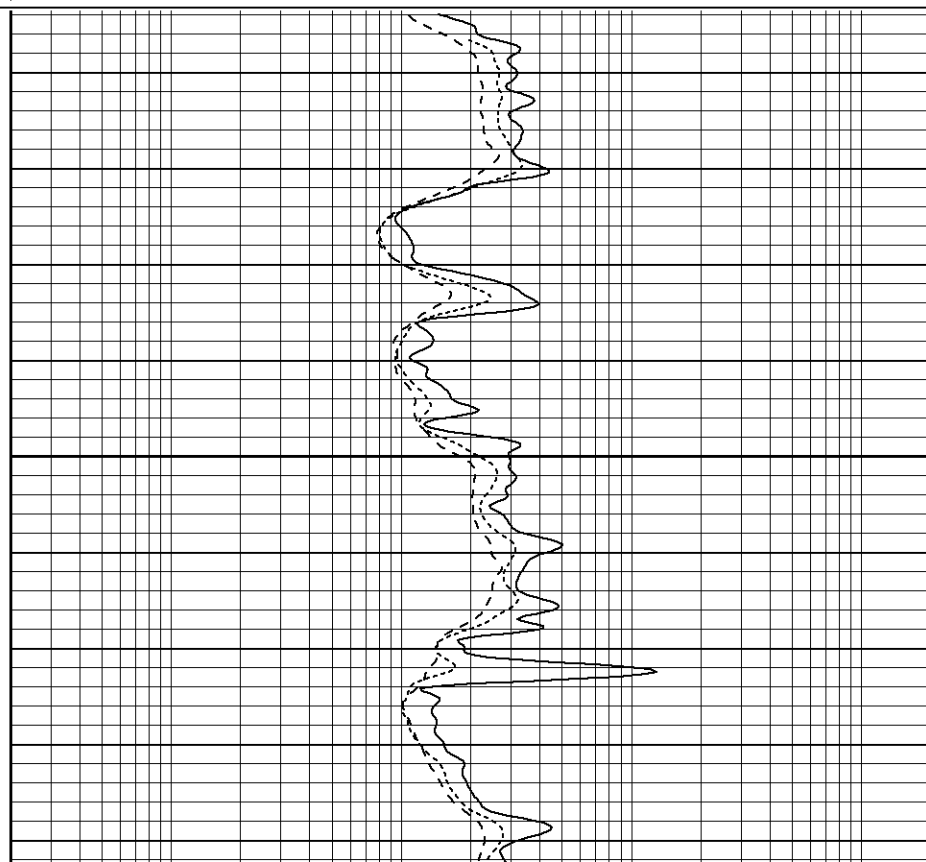
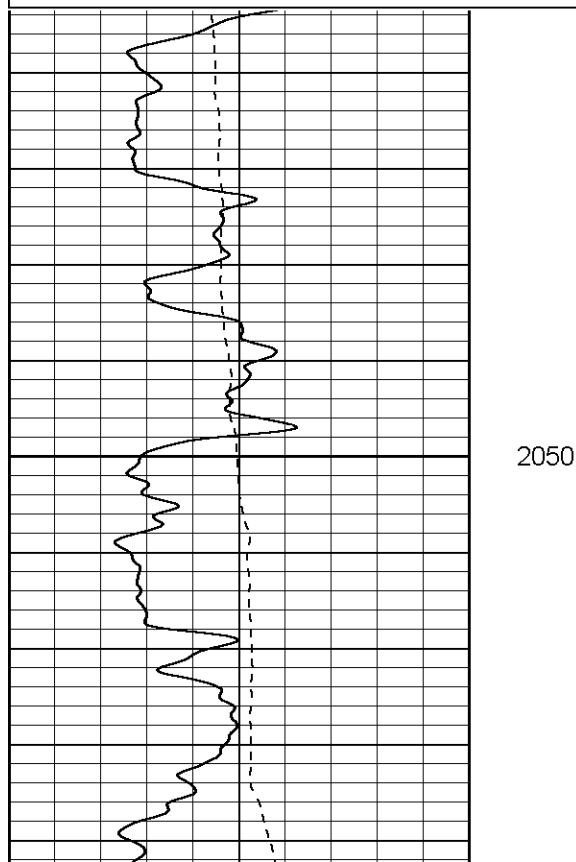
**Patterson**

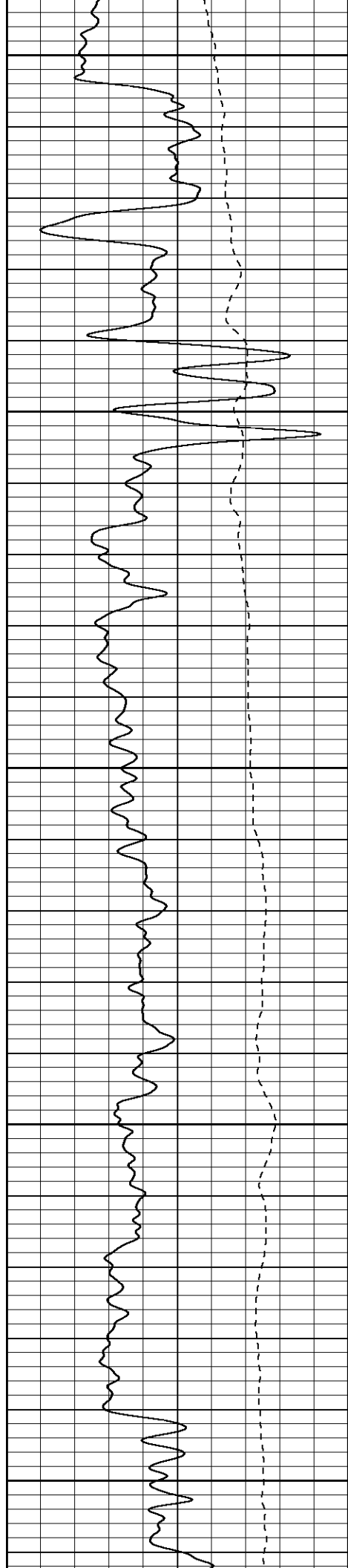
# Repeat Section

Database File: xtoac05-04.db  
 Dataset Pathname: pass2.2  
 Presentation Format: dil  
 Dataset Creation: Wed Jul 12 17:46:34 2006 by Calc Warrior 7.0 STD Ope  
 Charted by: Depth in Feet scaled 1:240

0	GR (GAPI)	200
-100	SP (mV)	100

0.2	RILM (Ohm-m)	2000
0.2	RILD (Ohm-m)	2000
0.2	RLL3 (Ohm-m)	2000





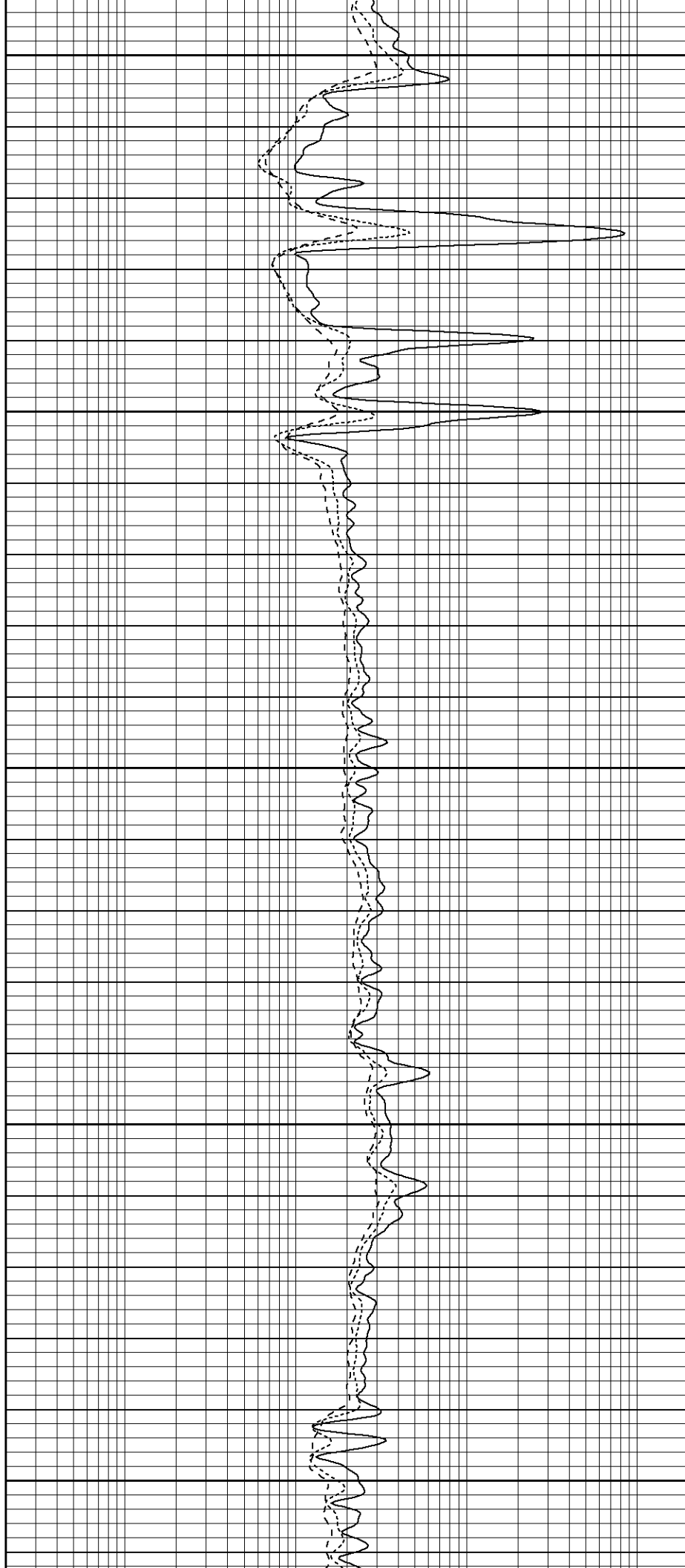
2100

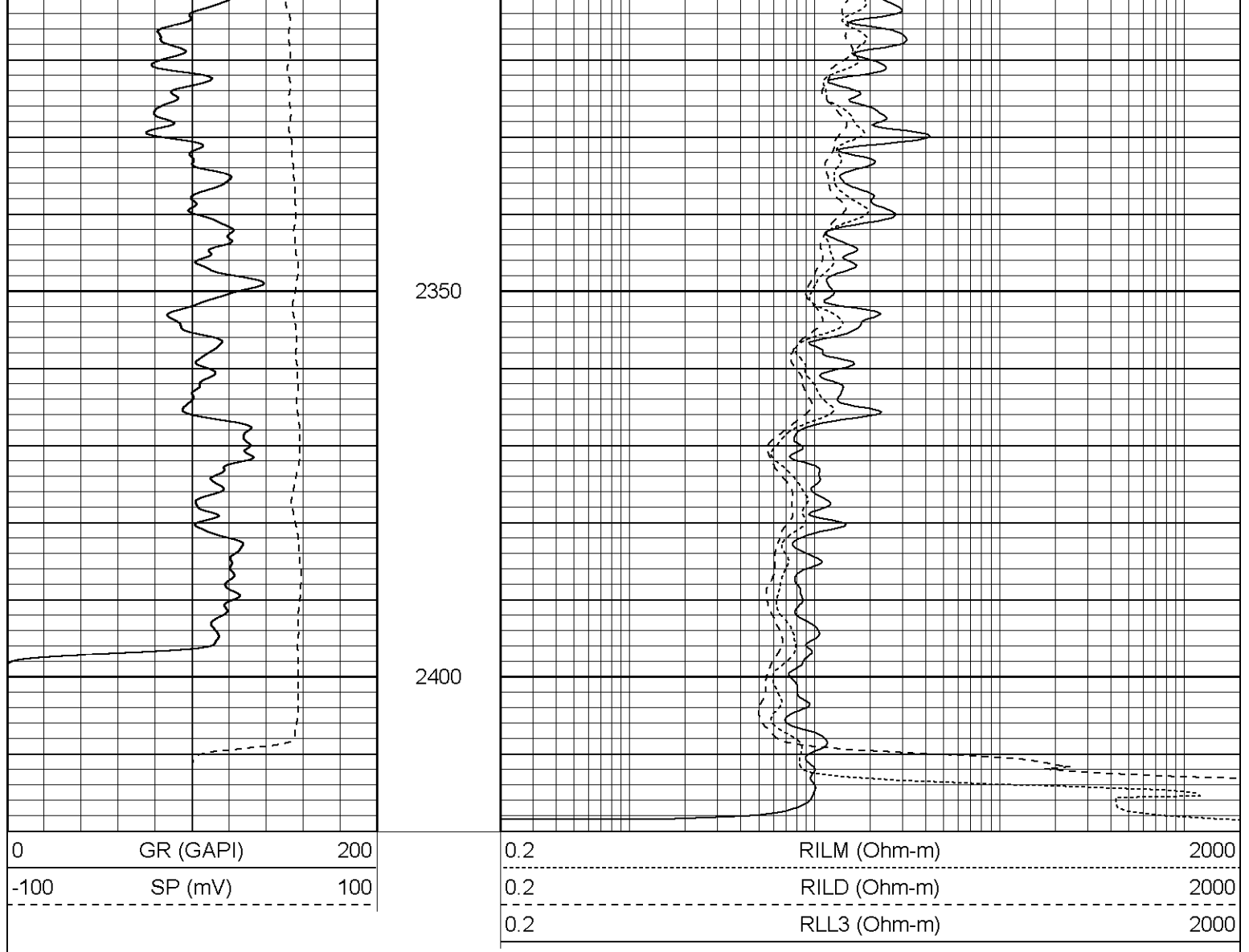
2150

2200

2250

2300





### Dual Induction Calibration Report

Serial-Model: 5375-G  
 Surface Cal Performed: Mon Jun 19 08:21:38 2006  
 Downhole Cal Performed: Wed Jul 12 14:42:49 2006


#### Surface Calibration

Loop:	Readings			References			Results	
	Air	Loop		Air	Loop		m	b
Deep	0.012	0.632	V	0.000	500.000	mmho-m	806.768	-9.661
Medium	0.016	0.753	V	0.000	550.000	mmho-m	746.164	-12.032
Internal:	Zero	Cal		Zero	Cal		m	b
Deep	0.014	0.631	V	0.000	500.000	mmho-m	809.790	-11.230
Medium	0.017	0.753	V	0.000	550.000	mmho-m	746.752	-12.516

#### Downhole Calibration

Internal:	Readings			References			Results	
	Zero	Cal		Zero	Cal		m	b
Deep	0.409	500.729	mmho-m	1.526	499.660	mmho-m	0.996	1.120
Medium	-0.000	552.341	mmho-m	0.474	550.041	mmho-m	0.995	0.474

Shallow	2.510	0.023	V	500.000	2.000	Ohm-m	165.000	-2.000
Gamma Ray Calibration Report								
Serial Number:		2001						
Tool Model:		OH						
Performed:		Tue Jul 04 08:55:06 2006						
Calibrator Value:		1.0	GAPI					
Background Reading:		0.0	cps					
Calibrator Reading:		1.0	cps					
Sensitivity:		0.2800	GAPI/cps					

Sensor	Offset (ft)	Schematic	Description	Len (ft)	OD (in)	Wt (lb)
CHD	25.08		None	0.75	1.50	5.00
GR	22.83		GR-OH (2001) PROBE	3.50	3.25	40.00
CILD SP	10.60 10.60		DIL-G (5375) Gearhart	20.83	4.00	345.00
CILM	6.89					
RLL3	1.70					
Dataset: /field/well/run1/_plots/_jobs_/dil Total Length: 25.08 ft Total Weight: 390.00 lb O.D. 4.00 in						