



SUPERIOR
WELL SERVICES
Black Lick, Pa.
Mercer, Pa.
Wooster, Oh.
Cleveland, Ok.
Trinidad, Co.

CEMENT BOND LOG

Company XTO Energy Inc.
Well Hill Ranch 25-16
Field Purgatoire River
County Las Animas State Colorado

Location: API # : 05 071 09301 00

696' FSL & 571' FEL

SEC 25 TWP 34S RGE 67W

Permanent Datum Ground Level Elevation 7751'
Log Measured From Ground Level
Drilling Measured From Ground Level

Other Services
Elevation
K.B. -----
D.F. -----
G.L. 7751'

Date 9-05-07

Run Number	One		
Depth Driller	2450'		
Depth Logger	2312'		
Bottom Logged Interval	2310'		
Top Log Interval	Surface		
Open Hole Size	7 7/8"		
Type Fluid	Water		
Density / Viscosity	///		
Max. Recorded Temp.	127 DEG F		
Estimated Cement Top	Surface		
Time Well Ready	ROA		
Time Logger on Bottom	1:45 P.M.		
Equipment Number	T697		
Location	Trinidad		
Recorded By	M. Norton		
Witnessed By			

Borehole Record				Tubing Record			
Run Number	Bit	From	To	Size	Weight	From	To
Casing Record	Size		Wgt/Ft		Top		Bottom
Surface String	8 5/8"				00		484'
Prot. String							
Production String	5 1/2"				00		N/A
Liner							

<<< Fold Here >>>

All interpretations are opinions based on inferences from electrical or other measurements and we cannot and do not guarantee the accuracy or correctness of any interpretation, and we shall not, except in the case of gross or willful negligence on our part, be liable or responsible for any loss, costs, damages, or expenses incurred or sustained by anyone resulting from any interpretation made by any of our officers, agents or employees. These interpretations are also subject to our general terms and conditions set out in our current Price Schedule.

Comments

Well Directions:
Lorencito to XTO hill, third right to location.

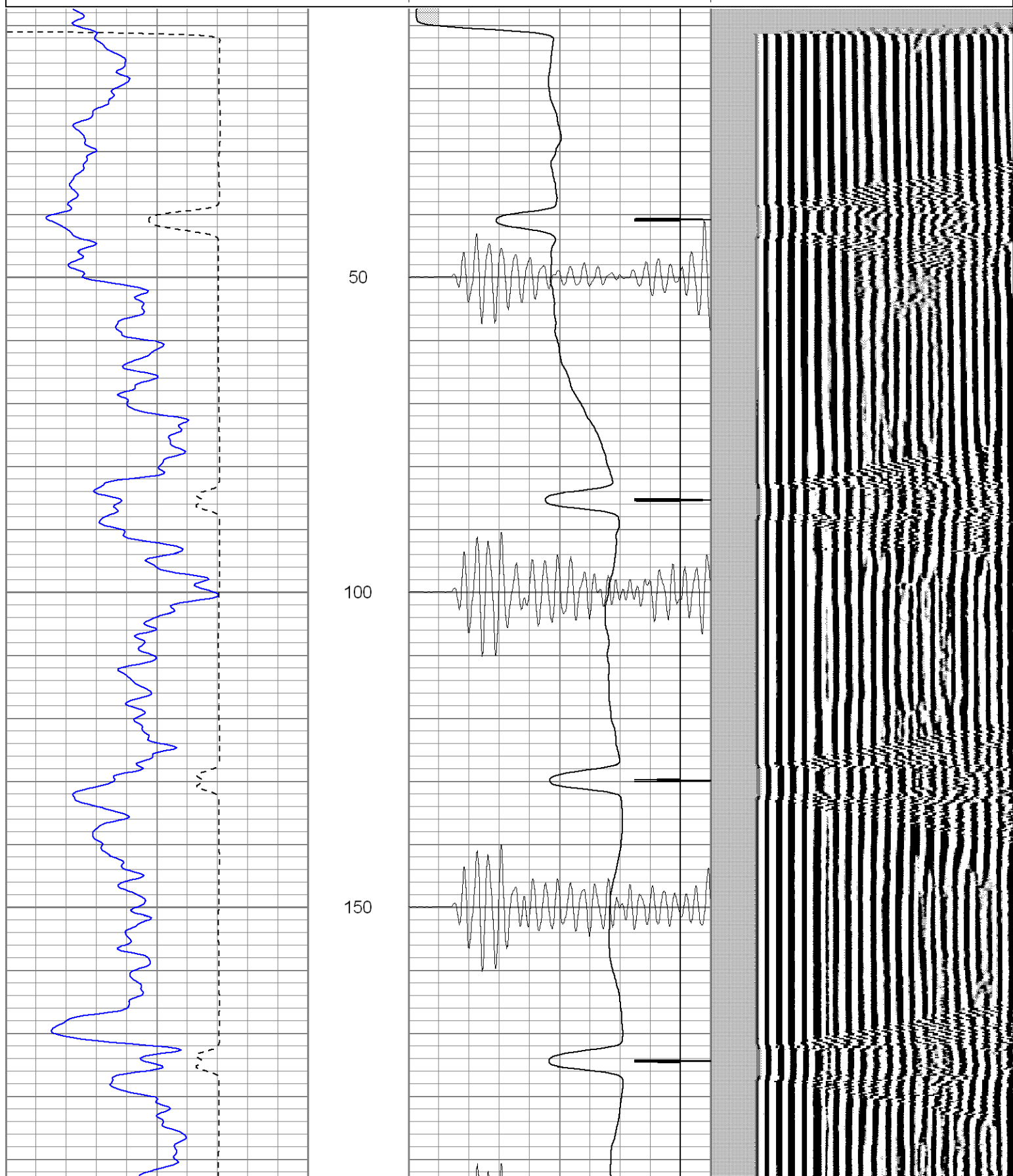


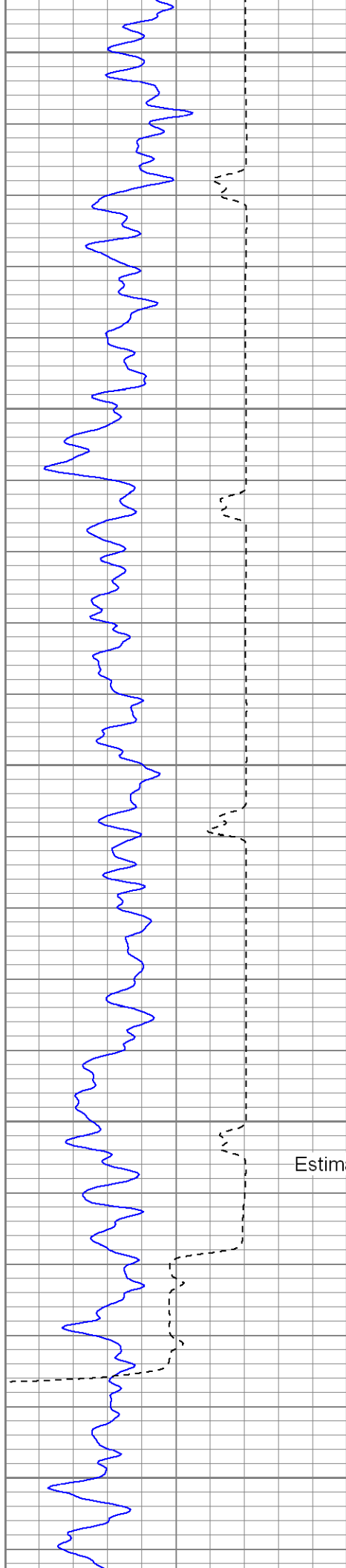
SUPERIOR
Black Lick, Pa.
Mercer, Pa.
Wooster, Oh.
Cleveland, Ok.
Trinidad, Co.

Main Pass

Database File: xtohr2516-090507b.db
Dataset Pathname: pass2
Presentation Format: cblrt
Dataset Creation: Wed Sep 05 13:49:45 2007 by Log Open-Cased 061129
Charted by: Depth in Feet scaled 1:240

0	GR (GAPI)	200	0	AMP3 (mV)	100	200	Variable Density	1200
400	TT3 (usec)	200	18	CCL	-2			
-----			200	CBL5	1200			





200

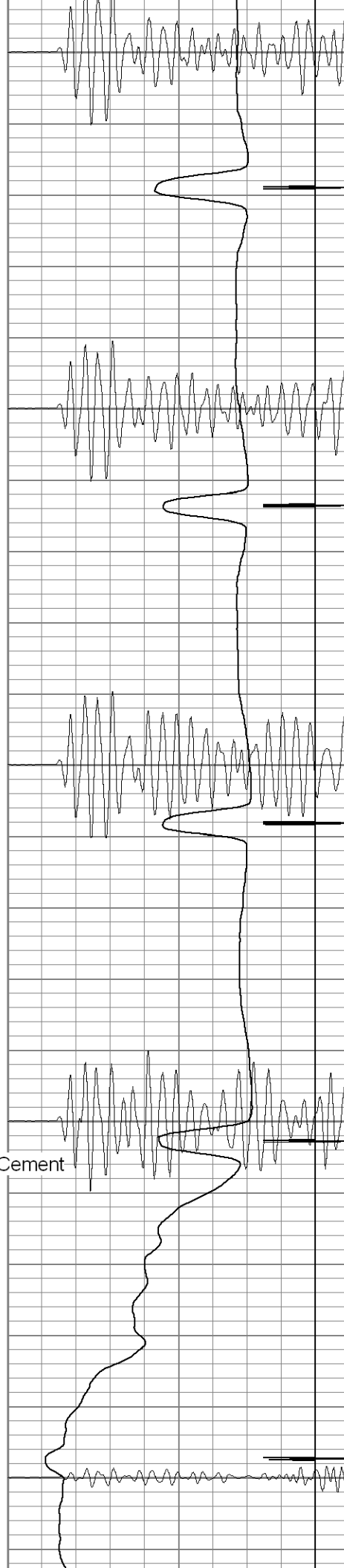
250

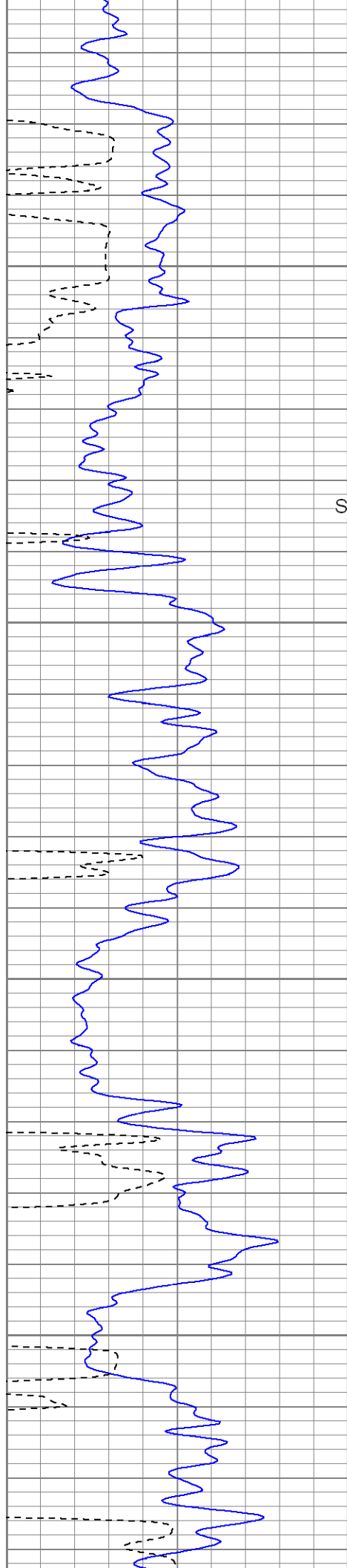
300

350

400

Estimated Top of Cement





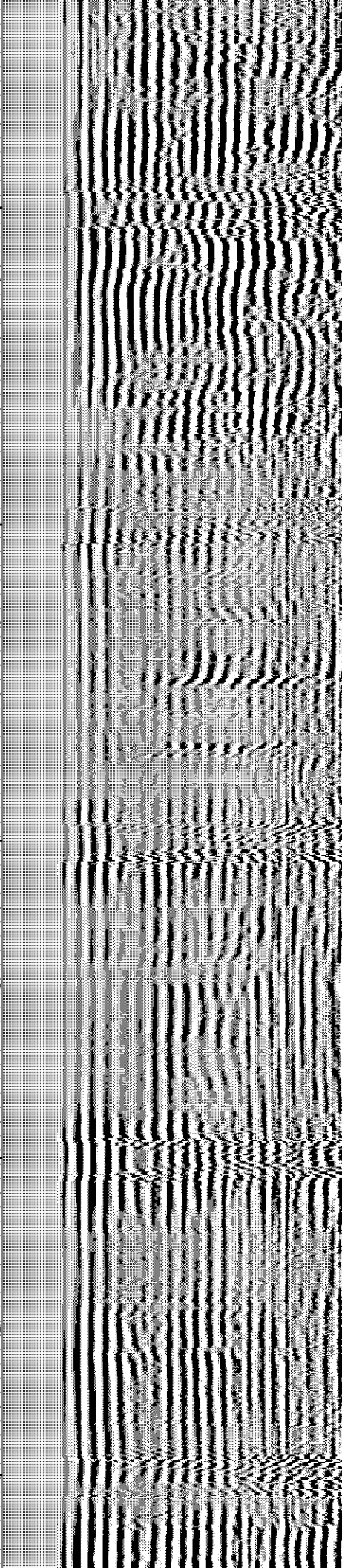
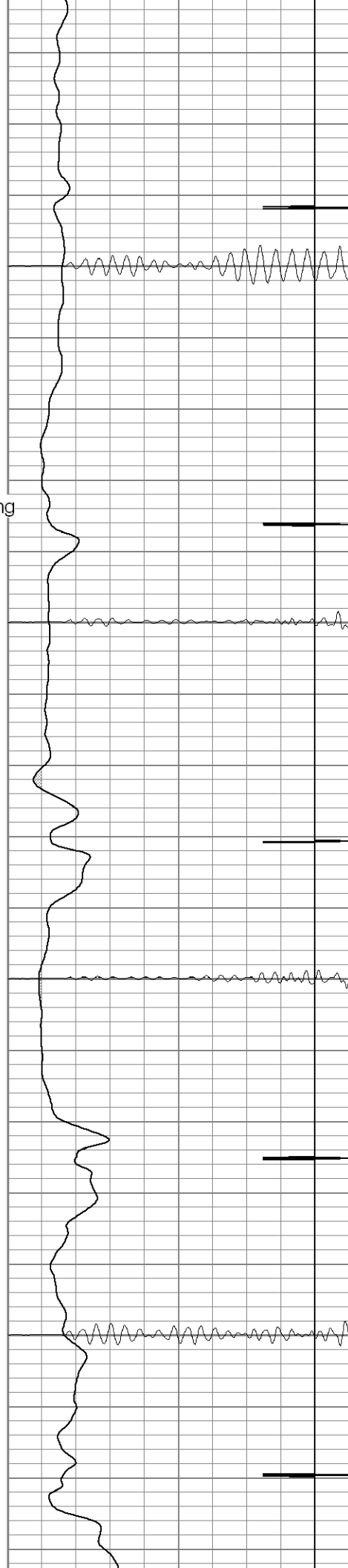
Surface Casing

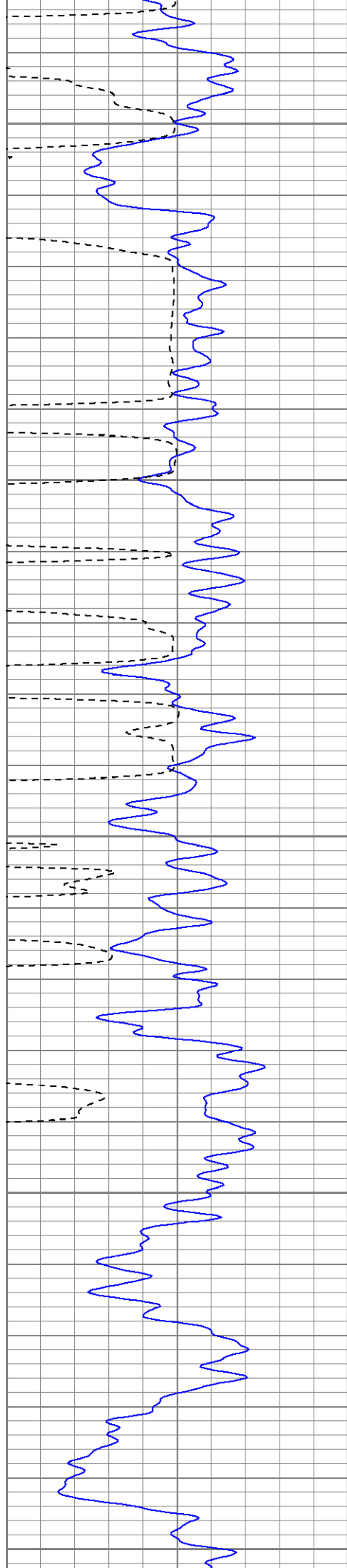
450

500

550

600





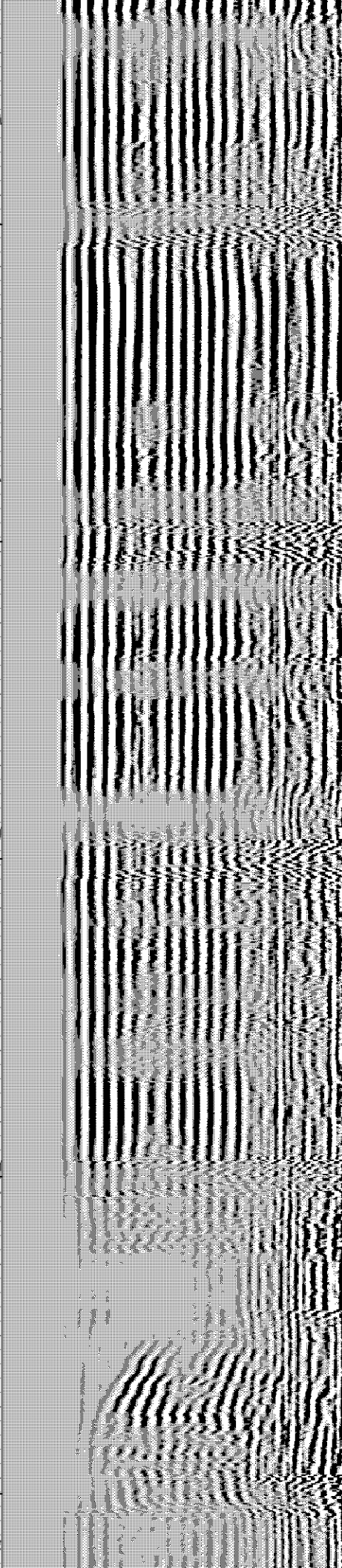
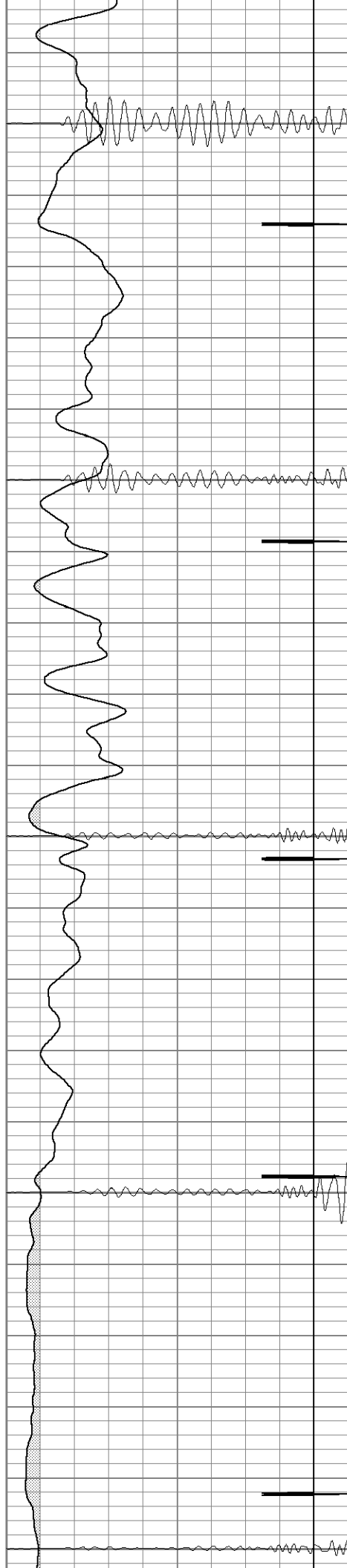
650

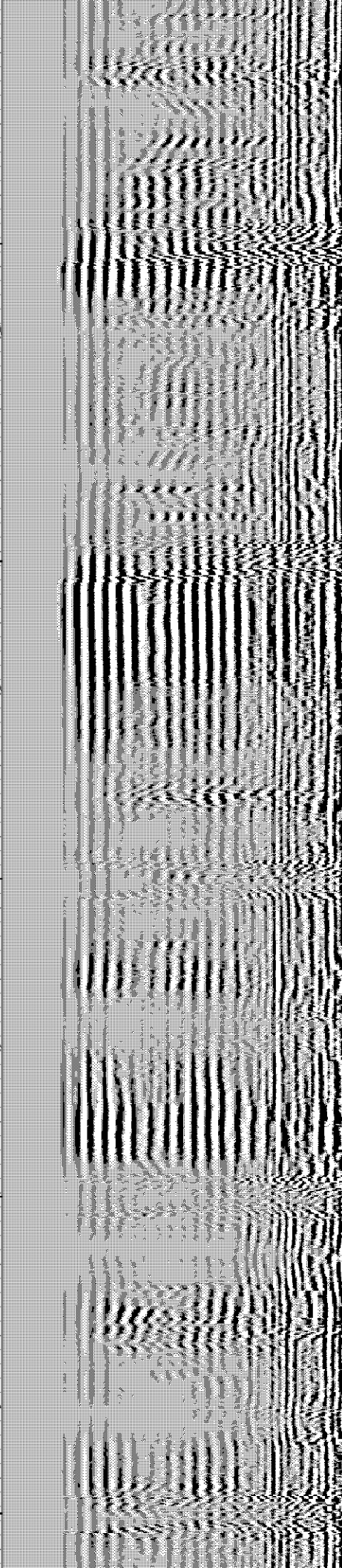
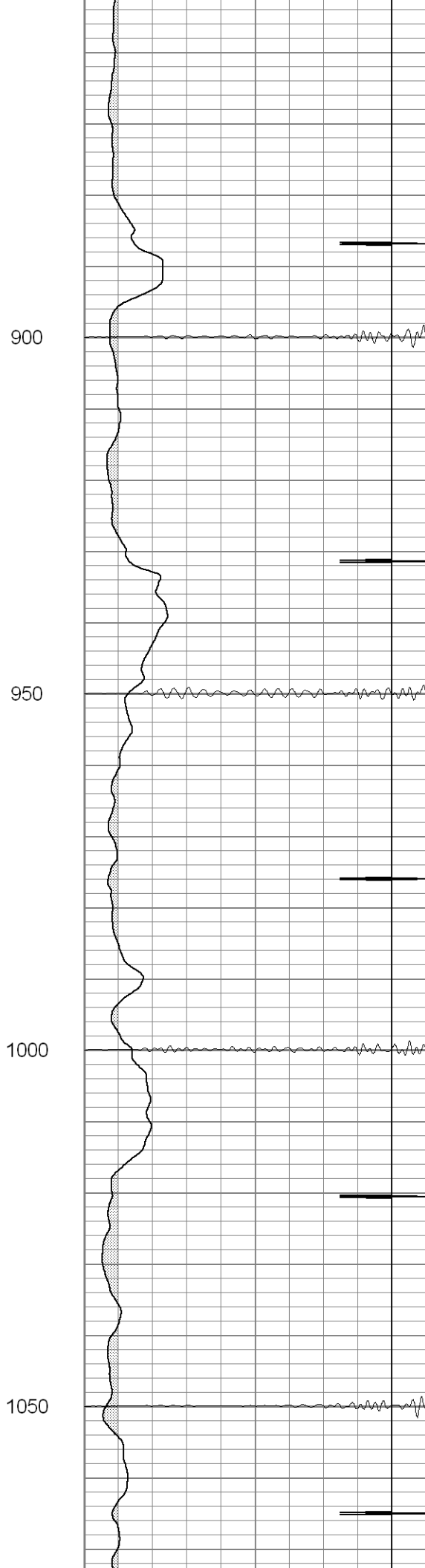
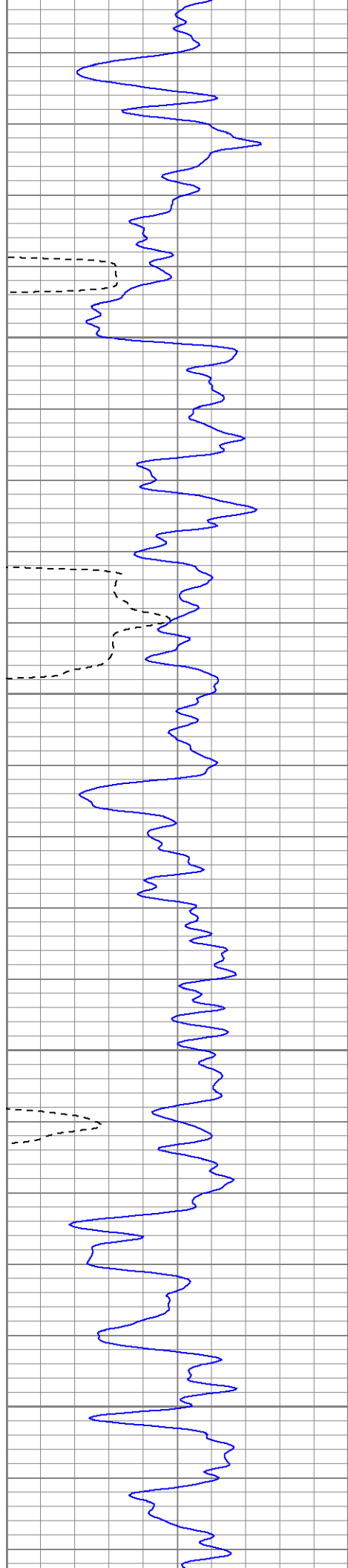
700

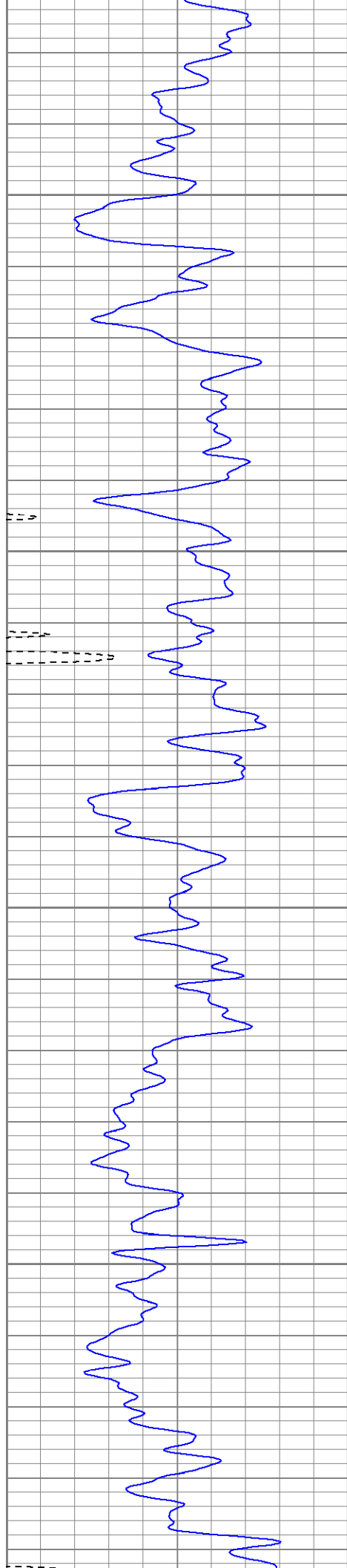
750

800

850





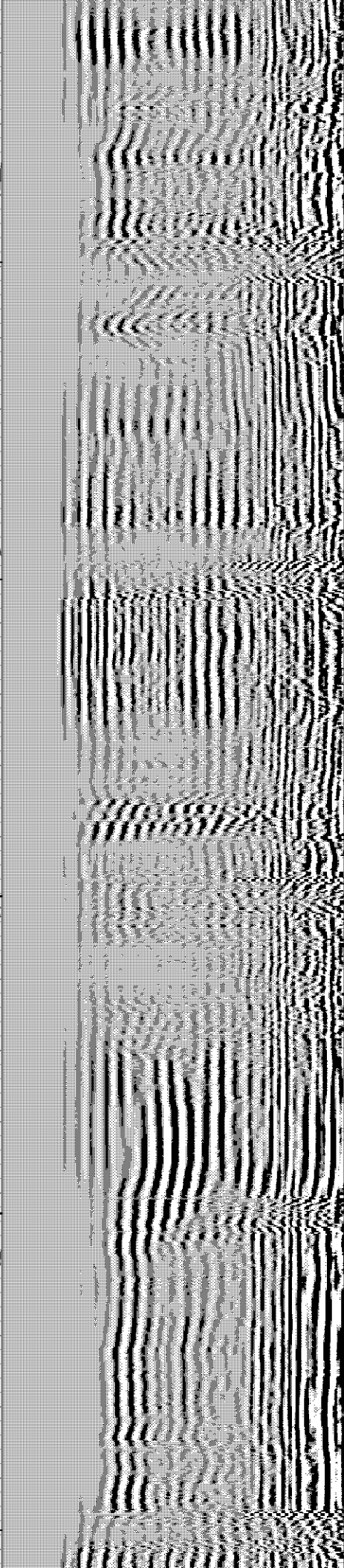


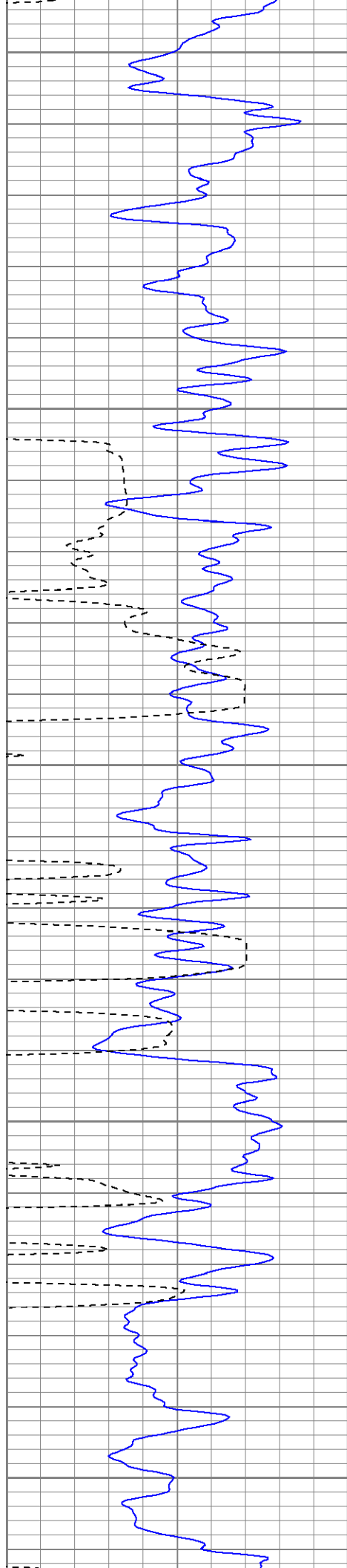
1100

1150

1200

1250





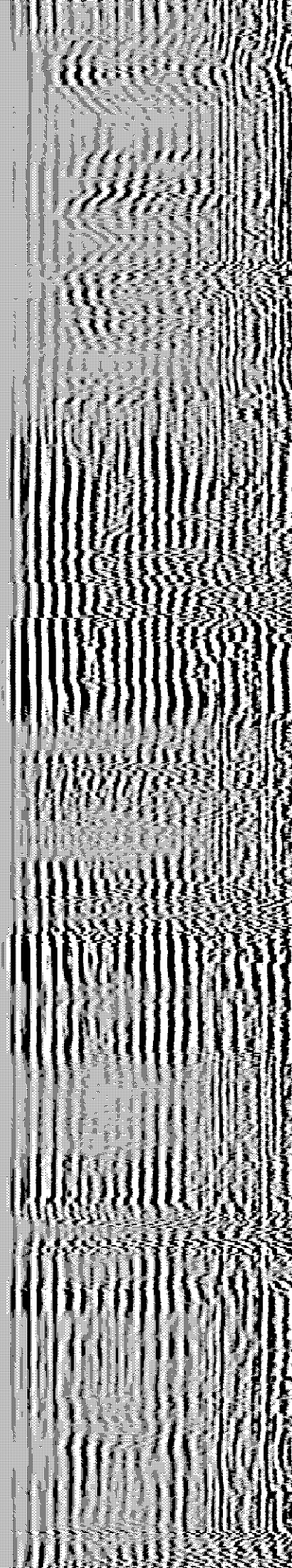
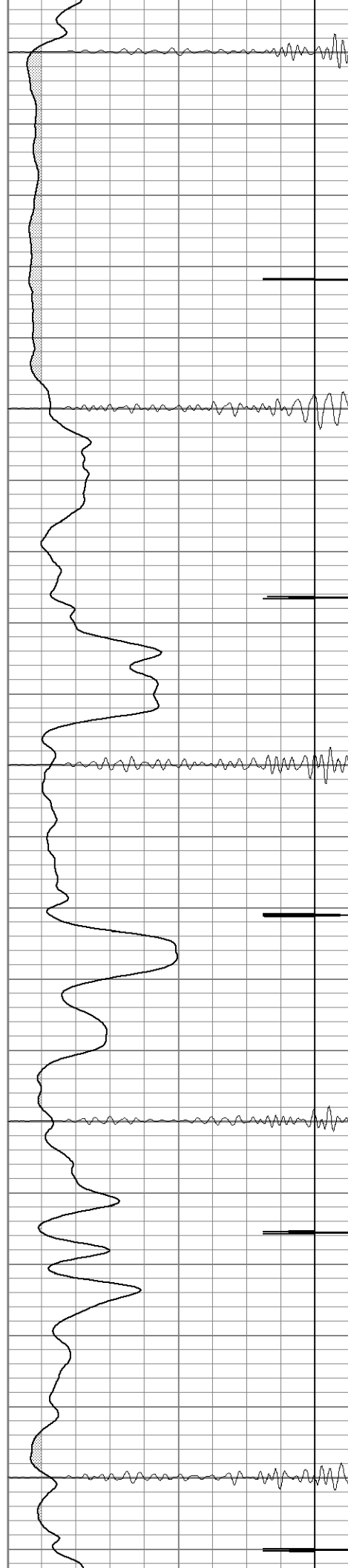
1300

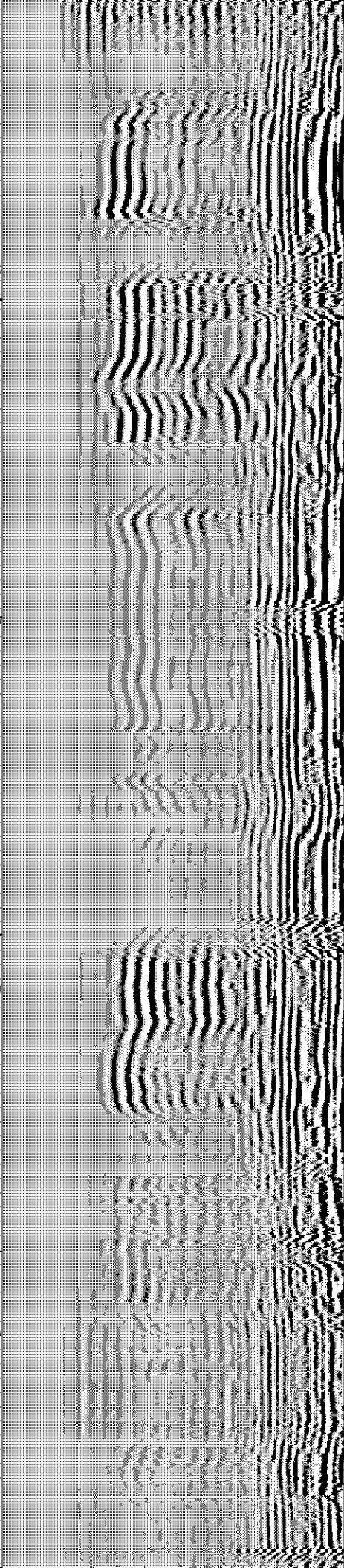
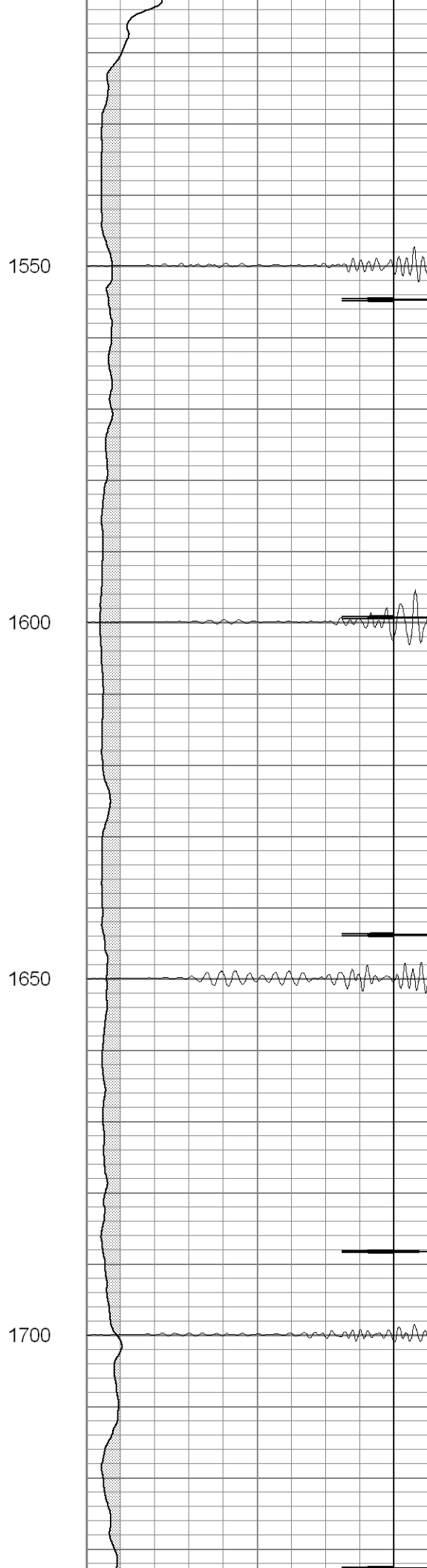
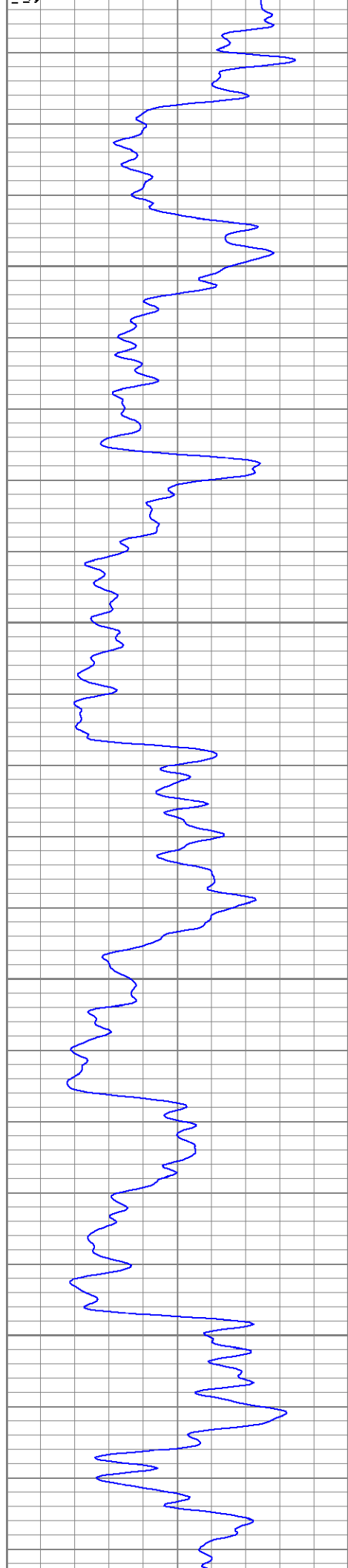
1350

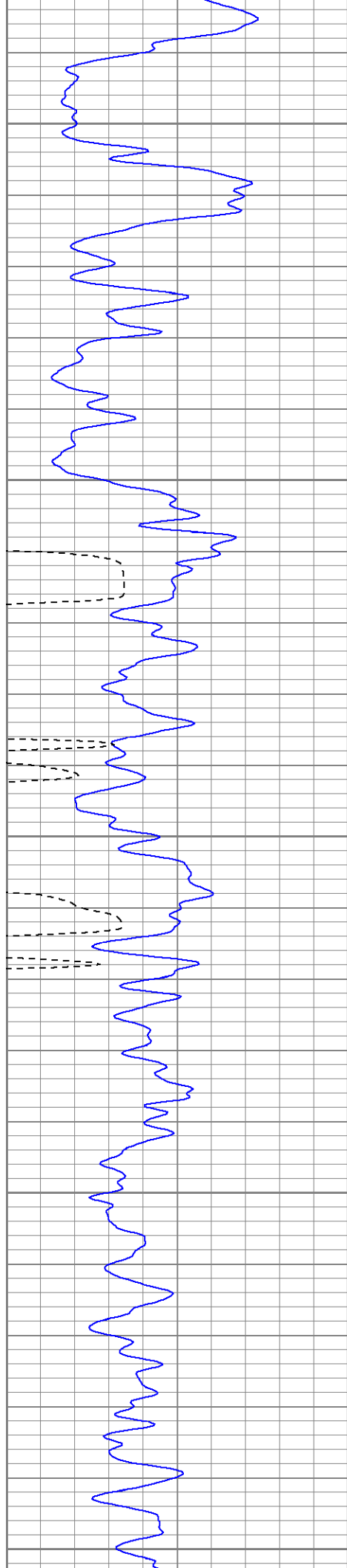
1400

1450

1500







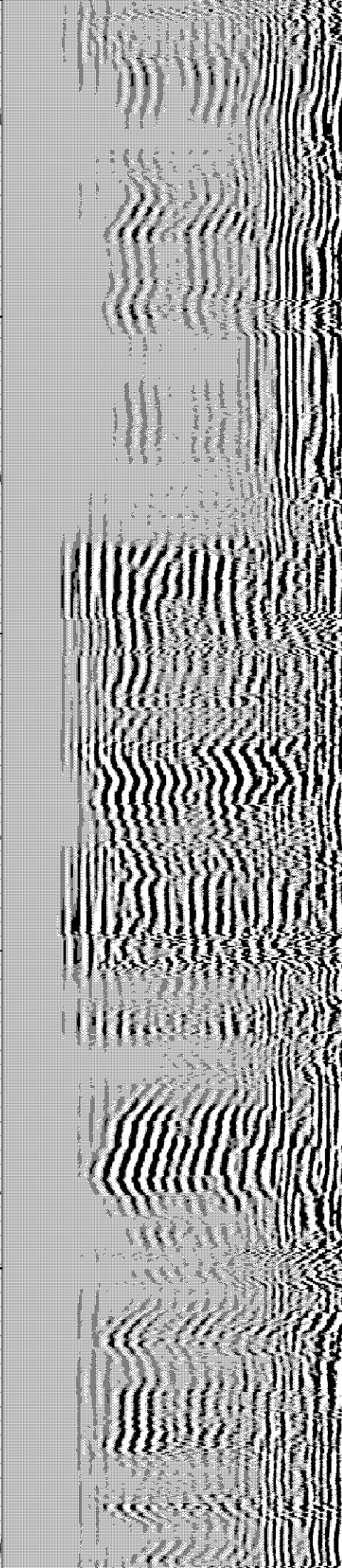
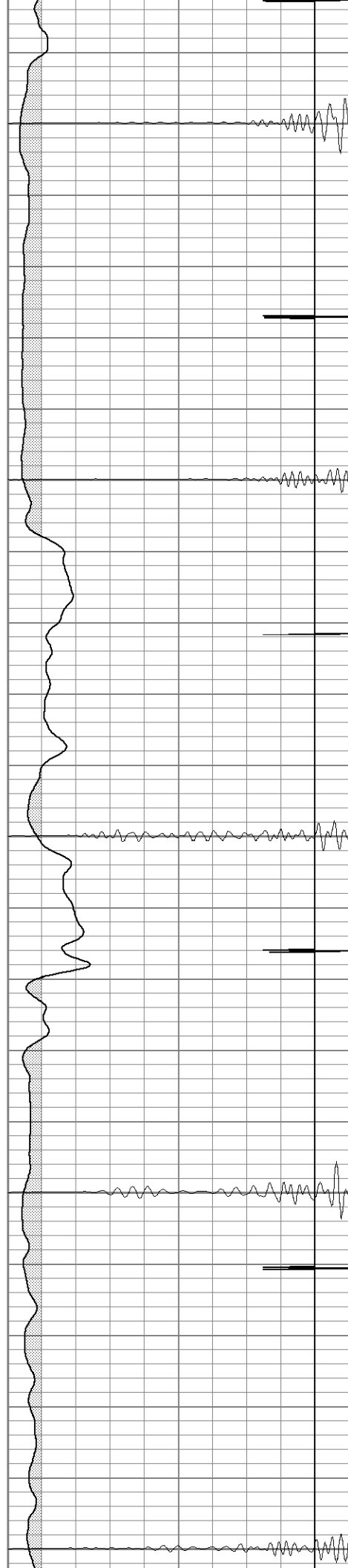
1750

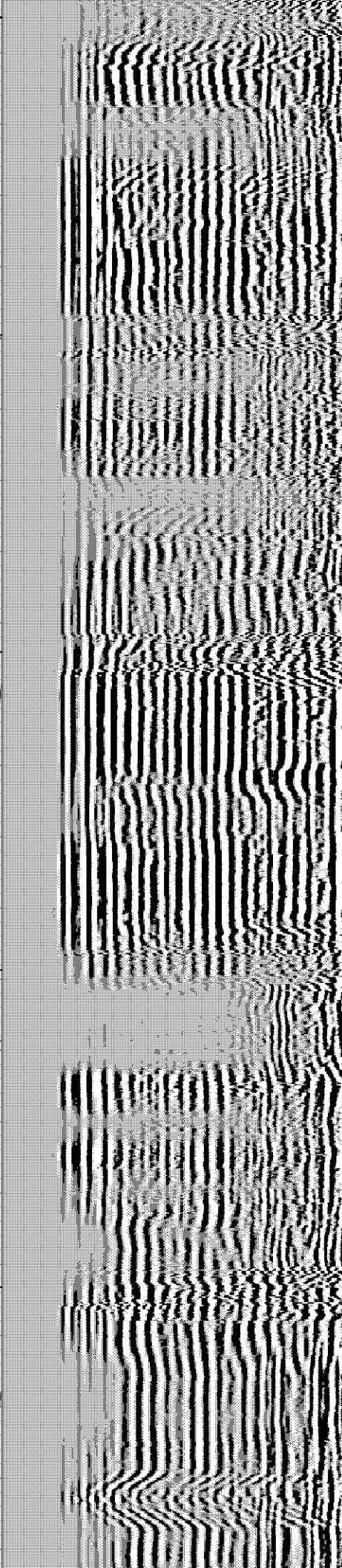
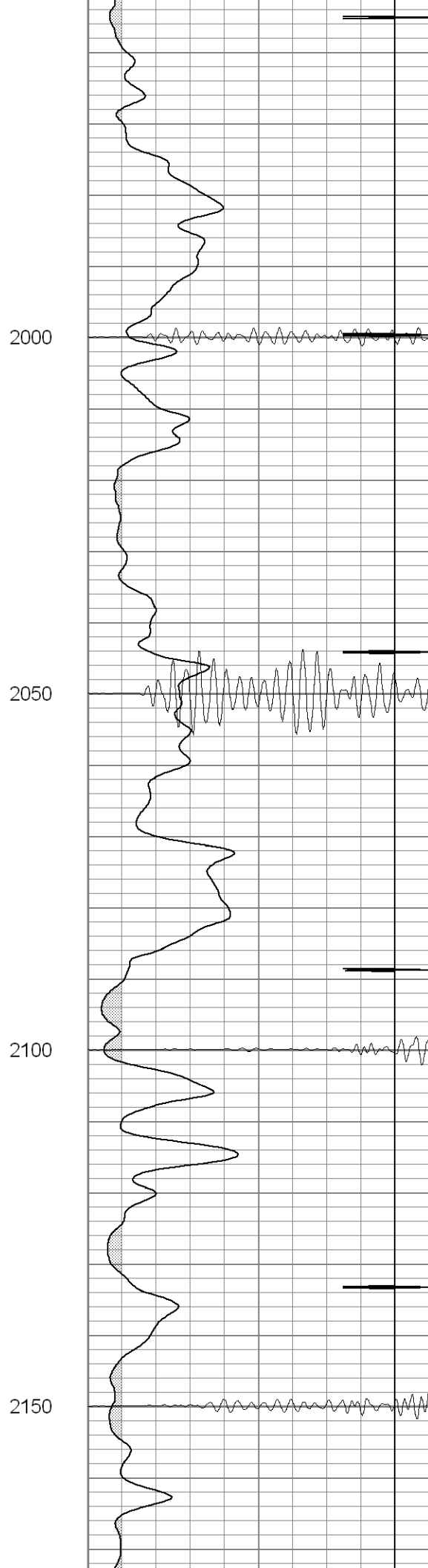
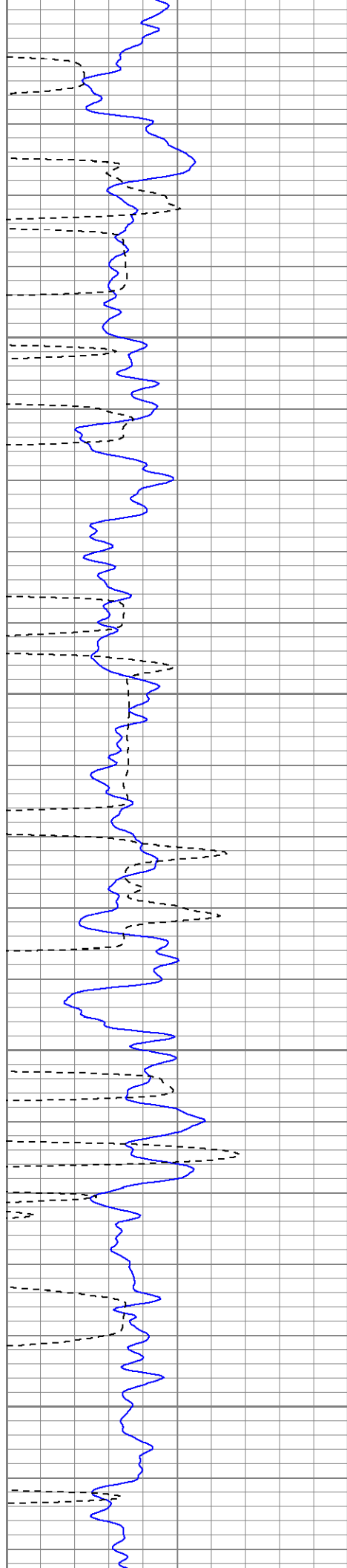
1800

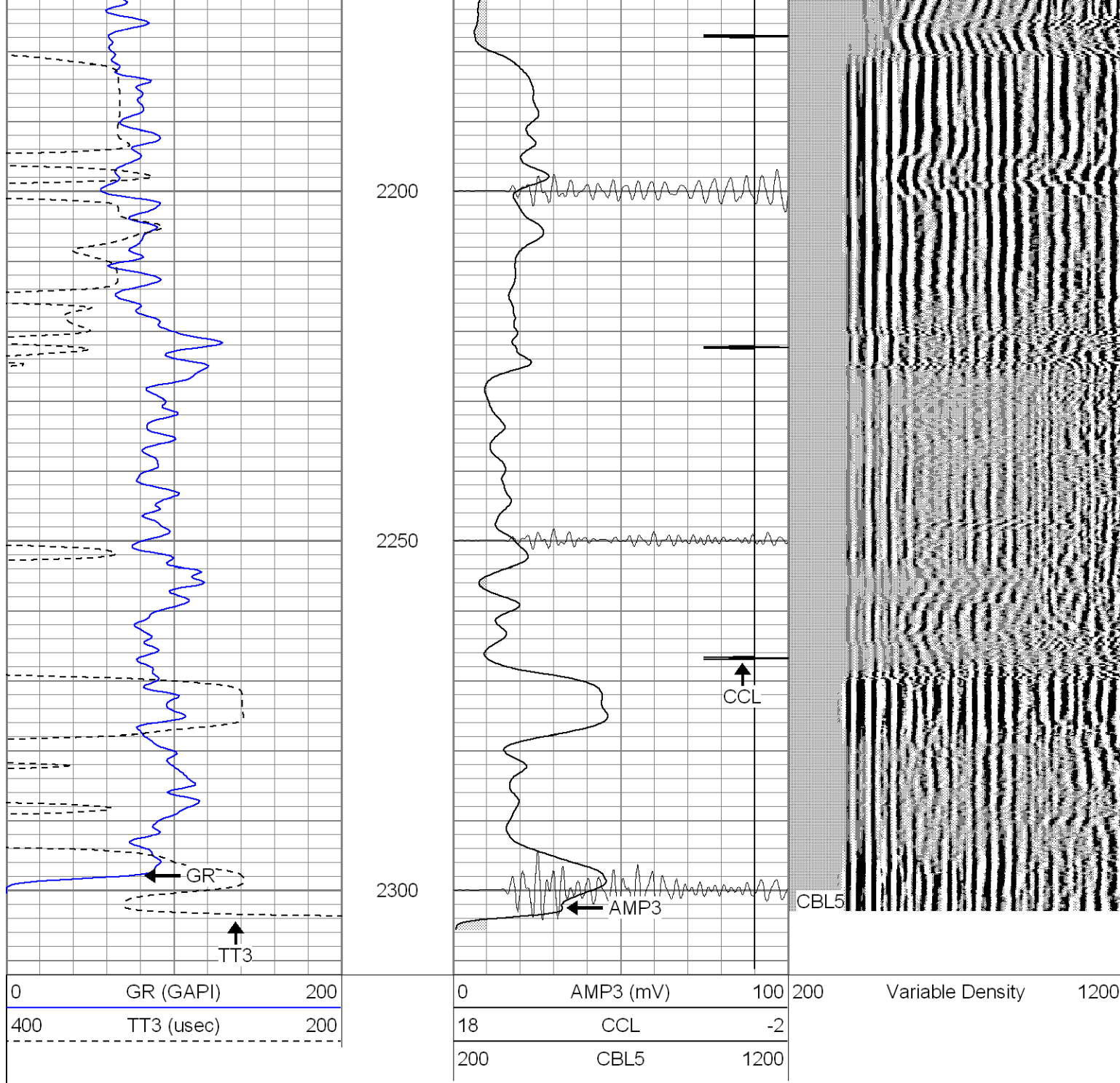
1850

1900

1950





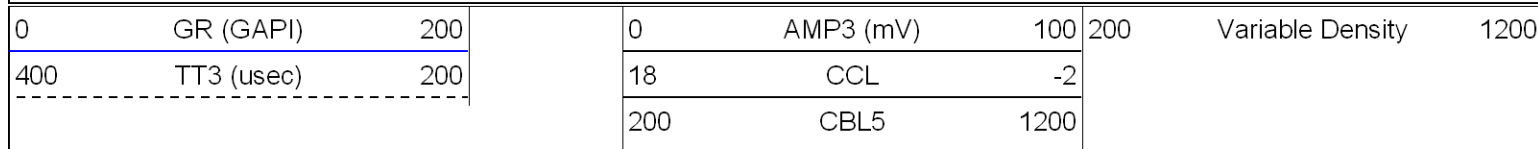


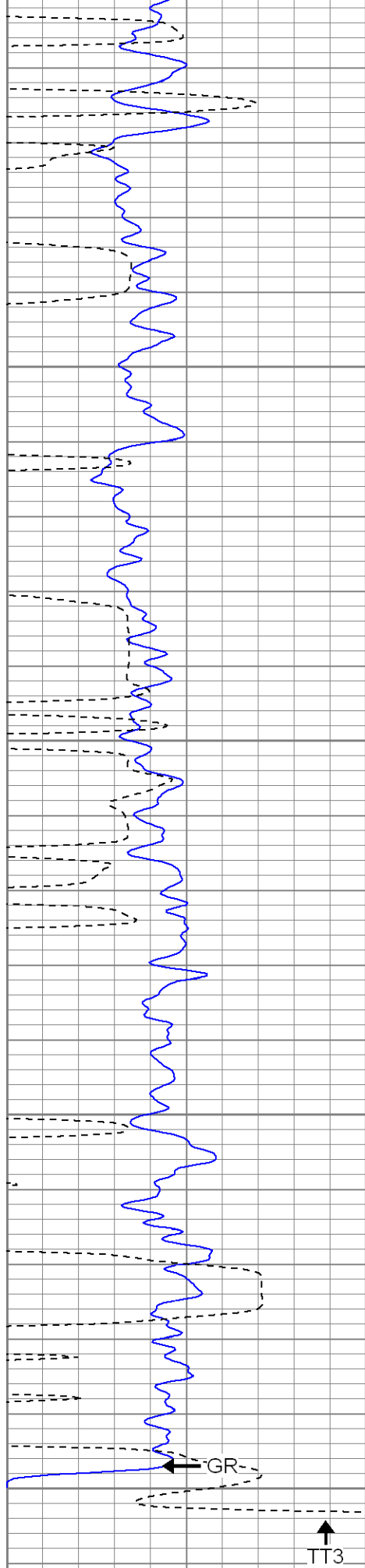
SUPERIOR

Black Lick, Pa.
Meroer, Pa.
Wooster, Oh.
Cleveland, Ok.
Trinidad, Co.

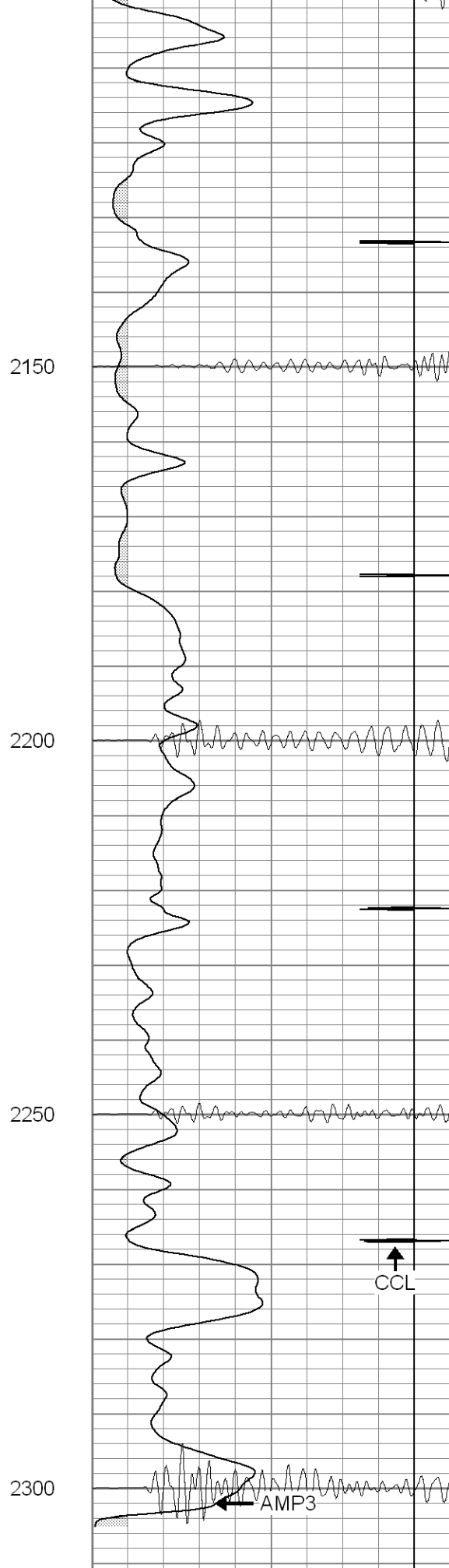
Repeat Section

Database File: xtahr2516-090507b.db
 Dataset Pathname: pass1
 Presentation Format: cblrt
 Dataset Creation: Wed Sep 05 13:41:29 2007 by Log Open-Cased 061129
 Charted by: Depth in Feet scaled 1:240

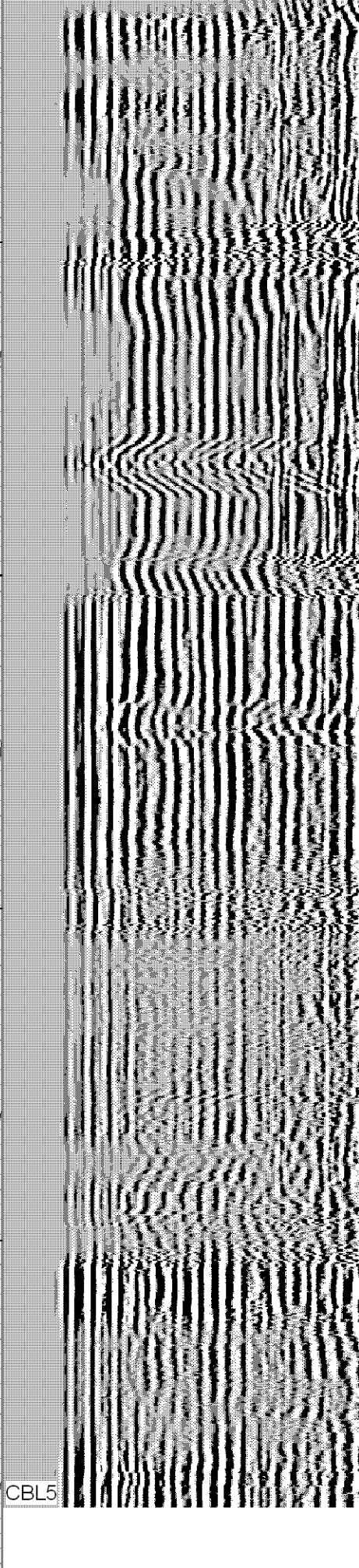




0	GR (GAPI)	200
400	TT3 (usec)	200



0	AMP3 (mV)	100
18	CCL	-2



200	Variable Density	1200
-----	------------------	------

Calibration Report

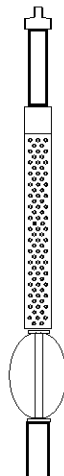
Database File: xtohr2516-090507b.db
 Dataset Pathname: pass2
 Dataset Creation: Wed Sep 05 13:49:45 2007 by Log Open-Cased 061129

Cement Bond Log Calibration Report

Serial Number:	Titan3		
Tool Model:	T3		
Performed:	Wed Sep 05 13:34:49 2007		
Depth:	0	ft	
Casing Diameter:	0	in	
	3' Spacing	5' Spacing	
Signal Zero:	1	1	mV
Calibrated Amplitude:	85	85	mV
Reading at Signal Zero:	0	0	V
Reading in Free Pipe:	1.6	2.25	V
Gain:	52.5	37.3333	
Offset:	1	1	

Gamma Ray Calibration Report

Serial Number:	Titan3	
Tool Model:	T3	
Performed:	Thu Aug 23 11:56:29 2007	
Calibrator Value:	1.0	GAPI
Background Reading:	0.0	cps
Calibrator Reading:	1.0	cps
Sensitivity:	1.0000	GAPI/cps

Sensor	Offset (ft)	Schematic	Description	Len (ft)	OD (in)	Wt (lb)
GR	13.40		None	0.75	1.50	5.00
			GR-T3 (Titan3)	2.52	2.25	25.00
WVF5	9.24		CBL-T3 (Titan3)	7.23	2.25	110.00
WVF3	8.24					
CCL	0.70		X	3.00	1.69	25.00
			CCL-T2 (Titan2)	1.91	2.75	15.00
			Short			

Dataset:	xtohr2516-090507b.db: field/well/run1/pass2
Total Length:	15.41 ft
Total Weight:	180.00 lb
O.D.	2.75 in