

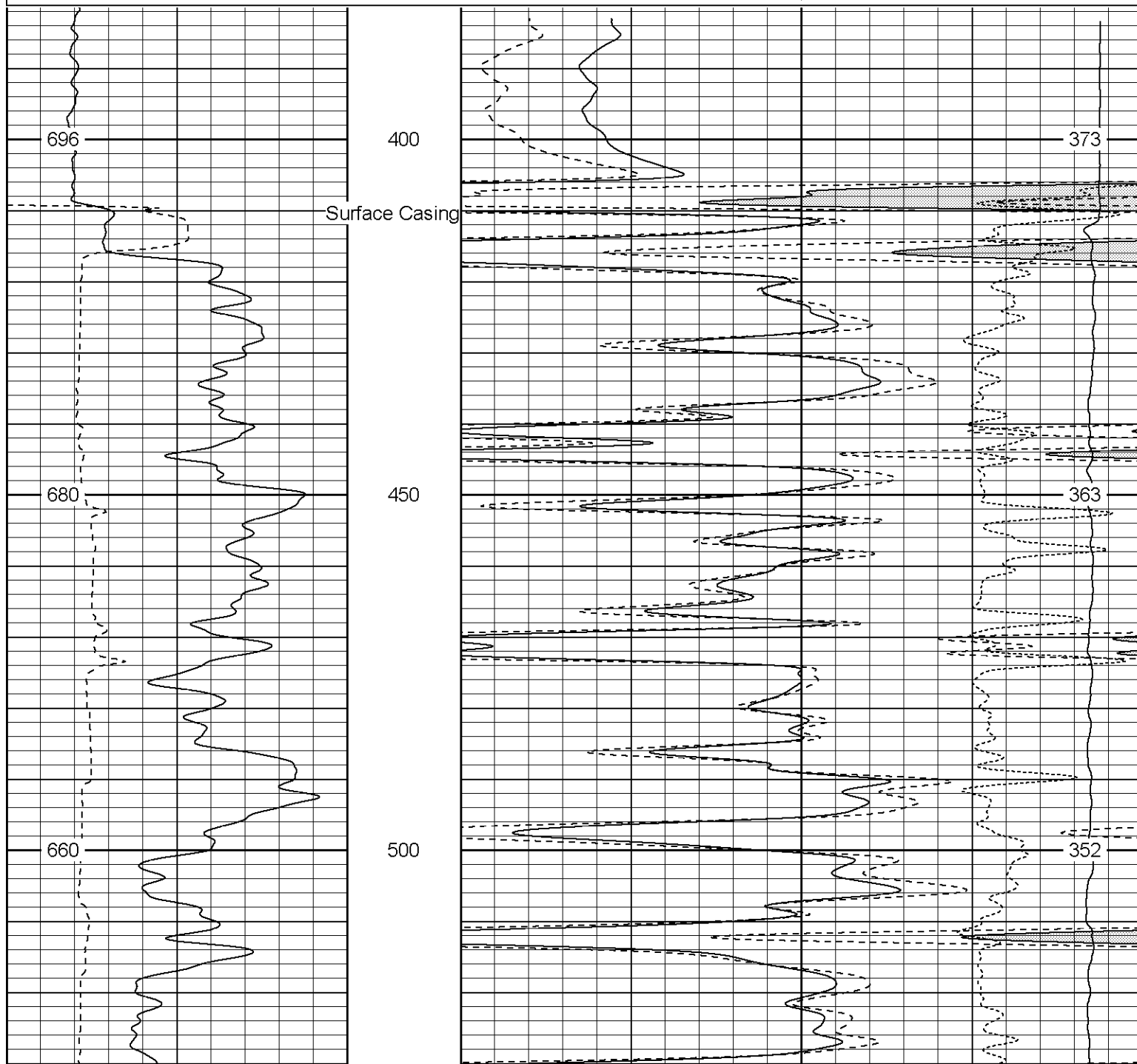
# Patterson

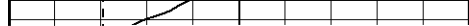
Company XTO Energy, Inc.		Company	XTO E
Well	Apache Canyon 11-15	Well	Apach
Field	Purgatoire River	Field	Purgat
County	Las Animas	County	Las Ar
State	CO	Location:	
			105
			SEC 11
		Permanent Datum	
		Log Measured From	
		Drilling Measured From	
Date	8-0		
Run Number	1		
Depth Driller	23		
Depth Logger	23		
Bottom Logged Interval	23		
Top Log Interval	Surface		
Casing Driller	8 5/8"		
Casing Logger	4		
Bit Size	7 1/2		
Type Fluid in Hole	Water		
Density / Viscosity	1		
pH / Fluid Loss	1		
Source of Sample	1		
Rm @ Meas. Temp	1		
Rmf @ Meas. Temp	1		
Rmc @ Meas. Temp	1		
Source of Rmf / Rmc	1		
Rm @ BHT	1		
Time Circulation Stopped	4:00		
Time Logger on Bottom	7:30		
Maximum Recorded Temperature	102 F		
Equipment Number	TJ		
Location	Trin		
Recorded By	M. N		
Witnessed By	Mr. Don		

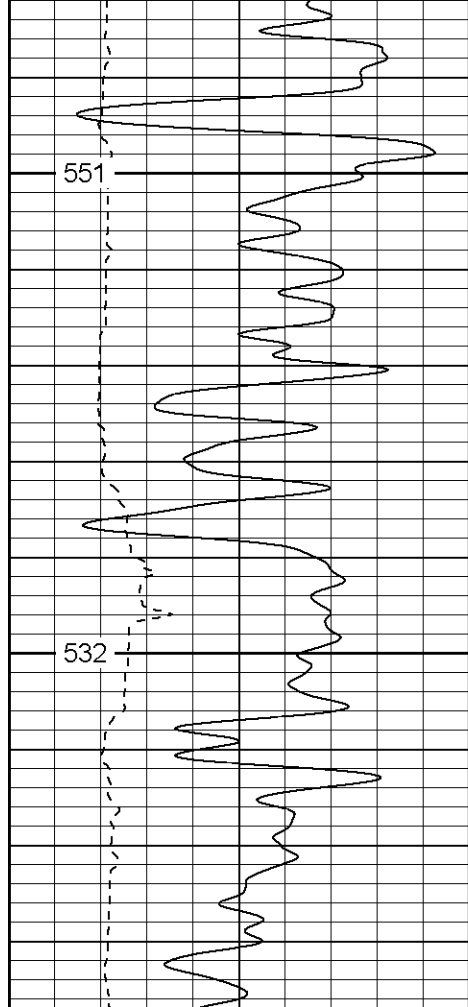
Database File: xtoac1115.db  
Dataset Pathname: pass4.1  
Presentation Format: cdl  
Dataset Creation: Thu Aug 03 09:08:11 2006 by Calc Warrior 7.0 STD Ope  
Charted by: Depth in Feet scaled 1:240

0	GR (GAPI)	200
6	DCAL (in)	16

1	RHOB (g/cc)	2
30	DPOR (pu)	-10
-0.5	RHOC (g/cc)	0.5
4000	LTEN (lb)	0

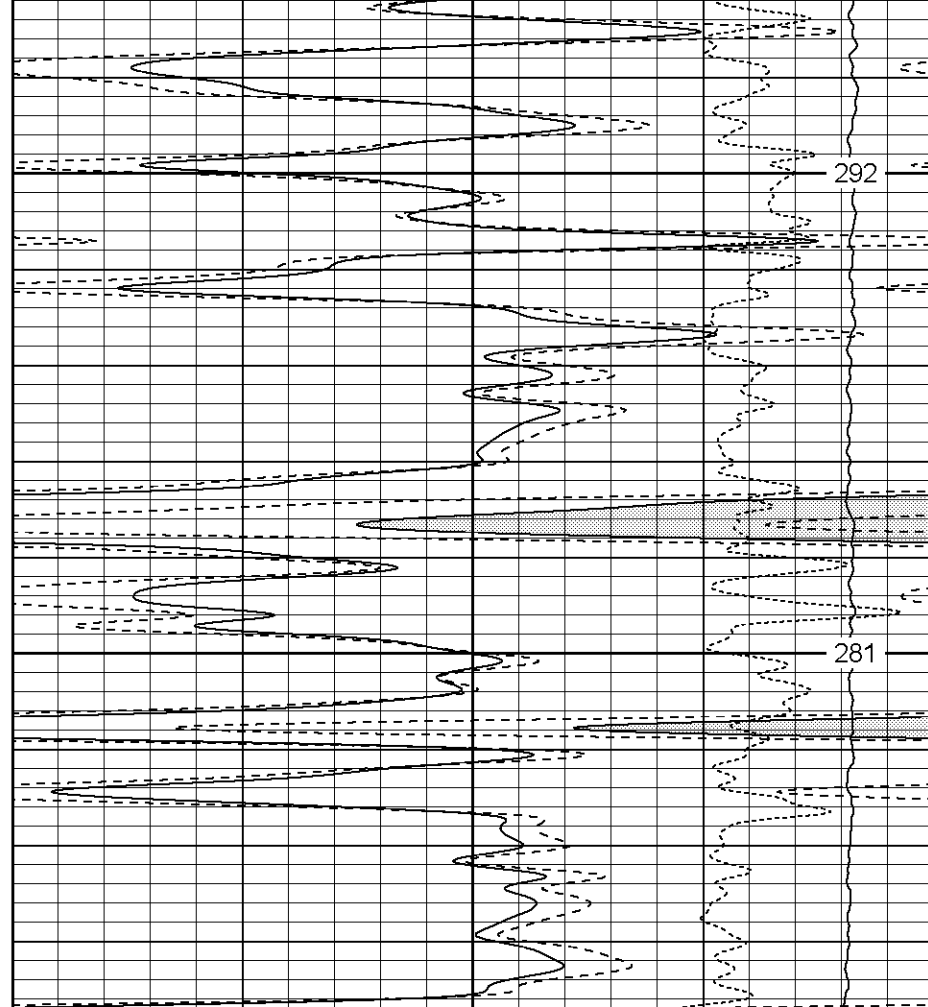


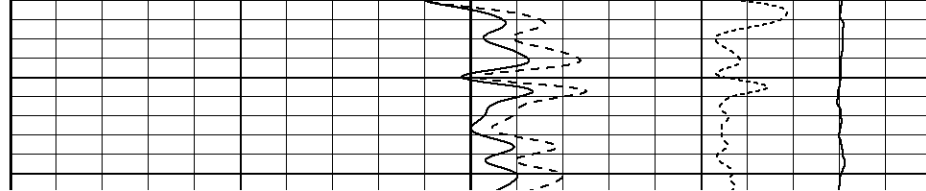
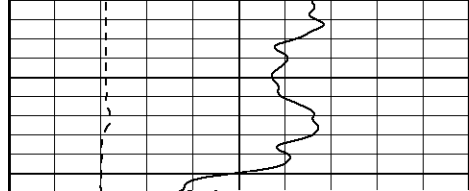


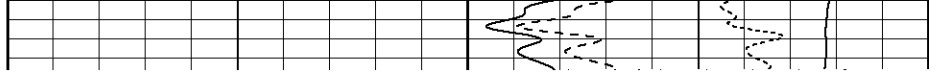


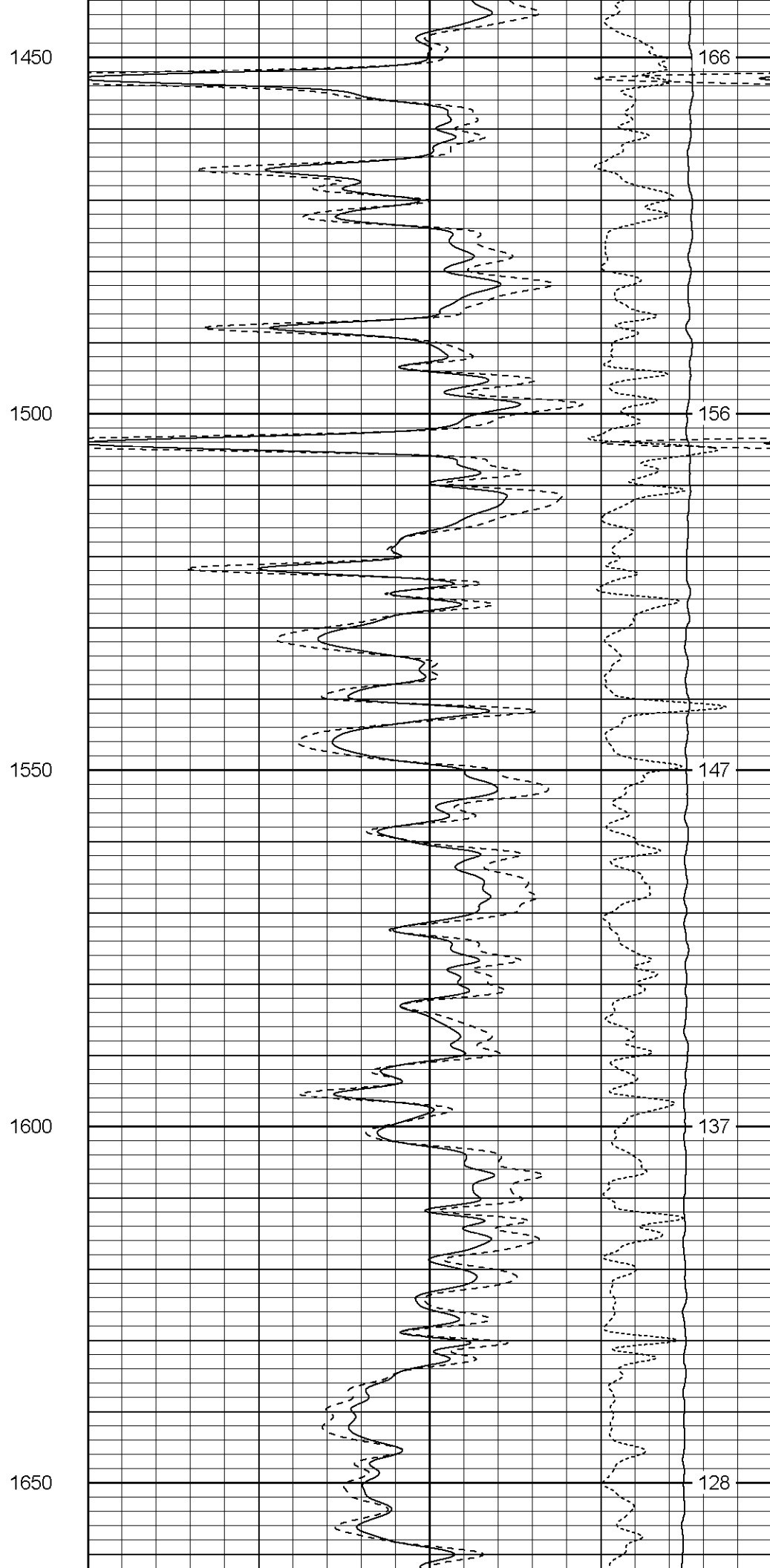
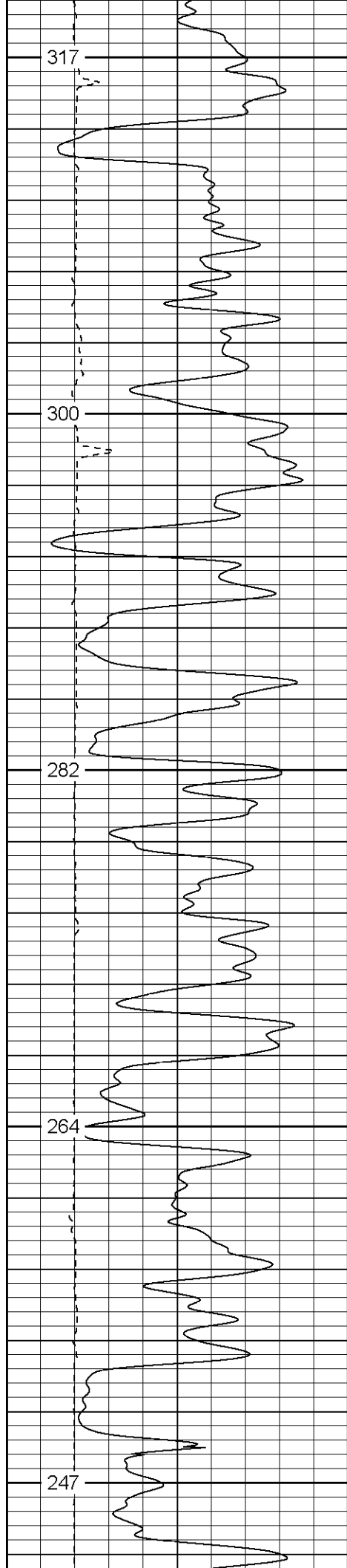
800

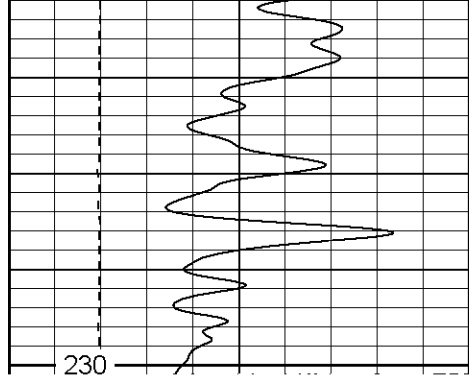
850



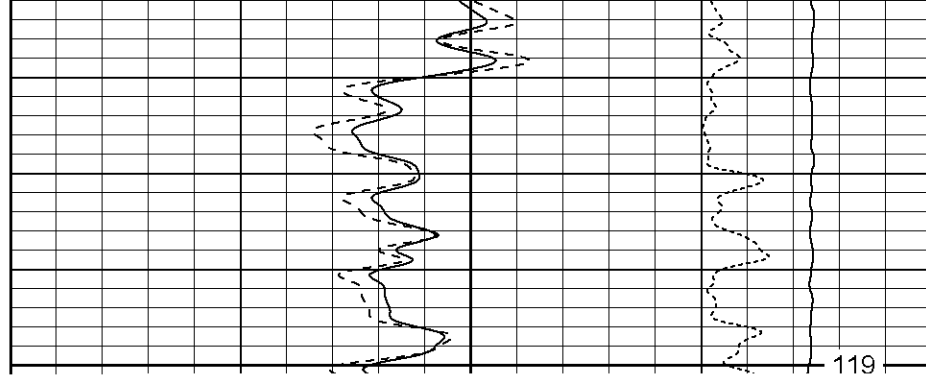




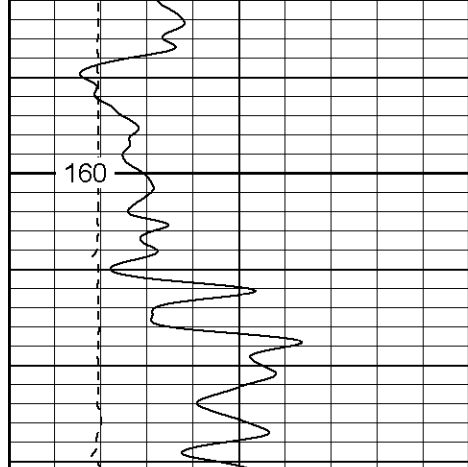




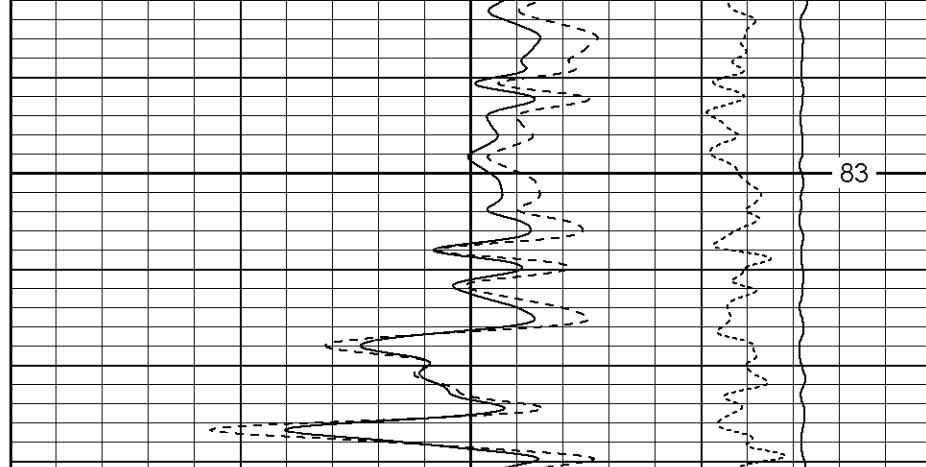
1700

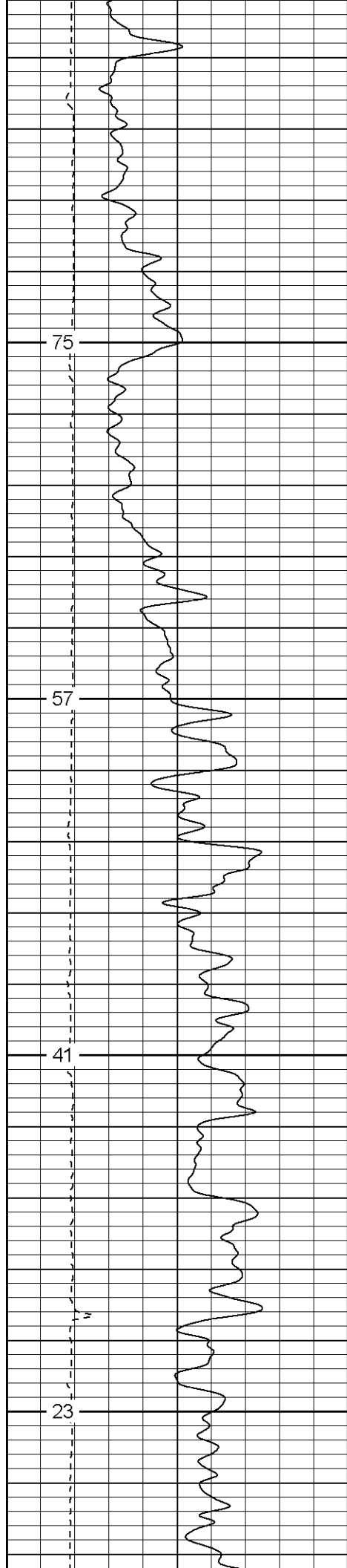






1900



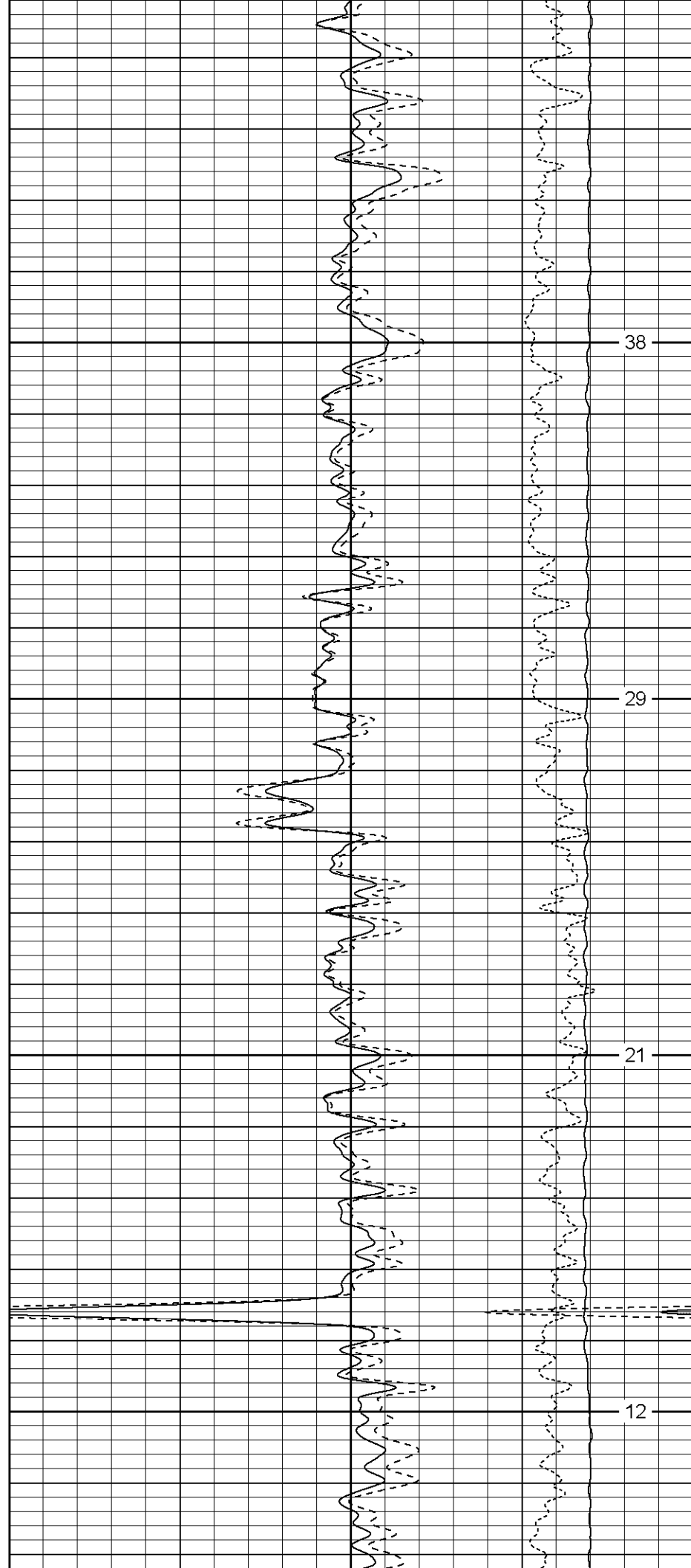


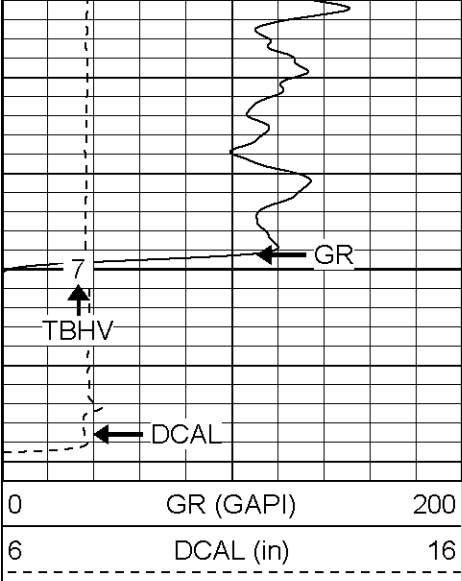
2150

2200

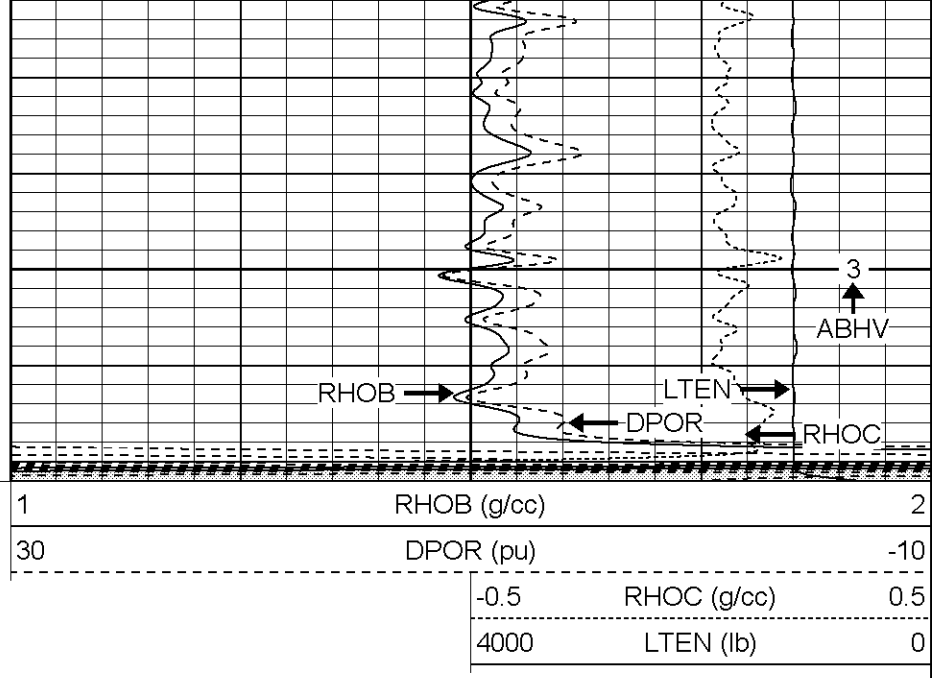
2250

2300





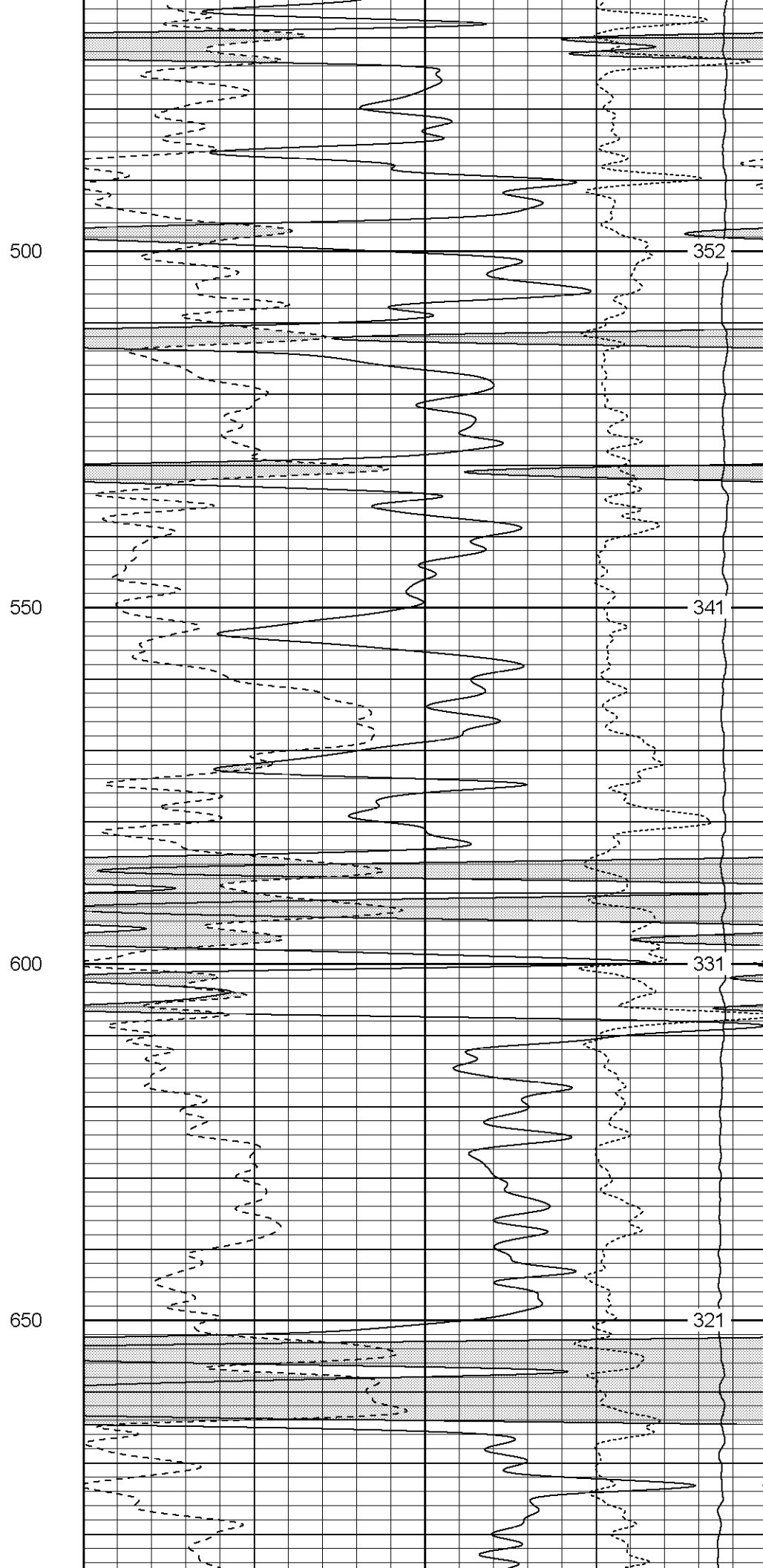
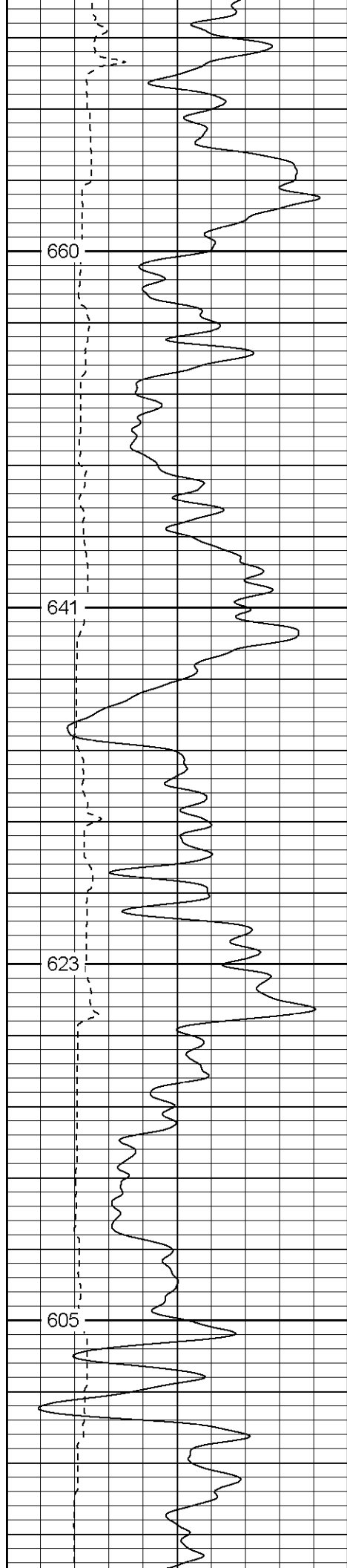
2350

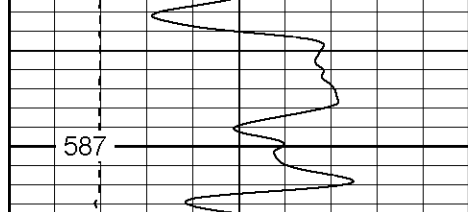


**Patterson**

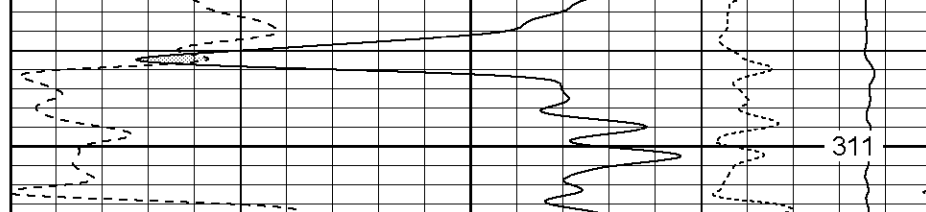
**Main Pass**

Database File: C:\Data\1445.dlb

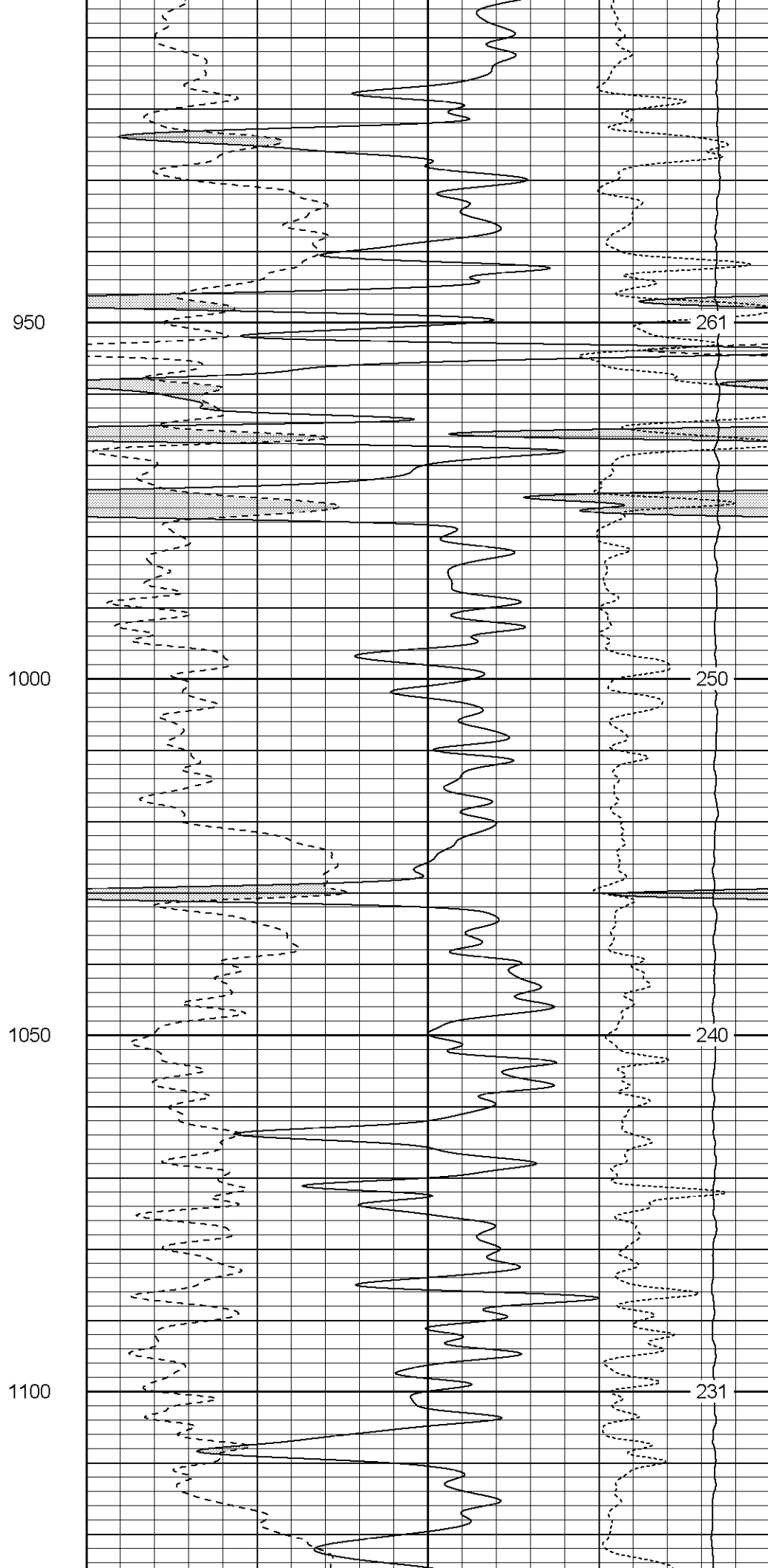
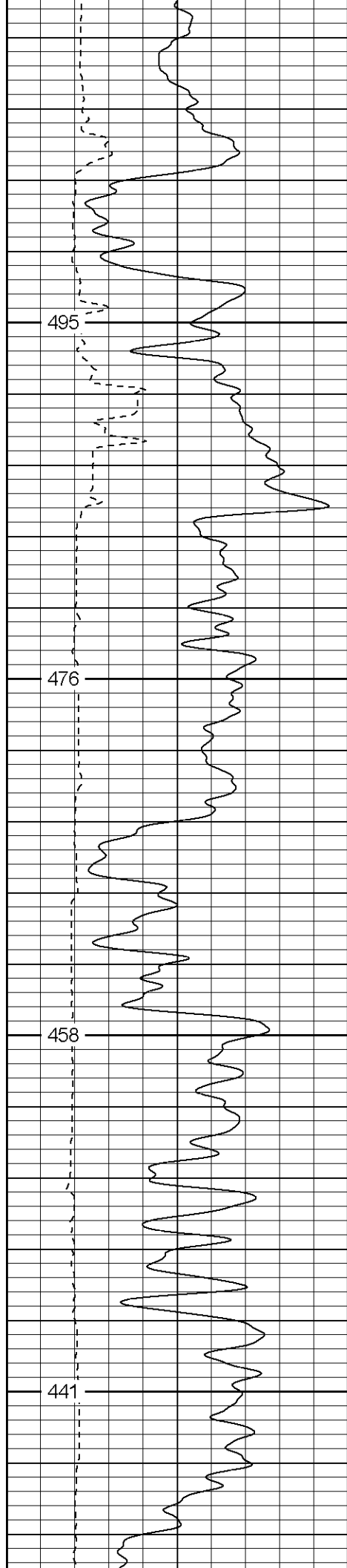


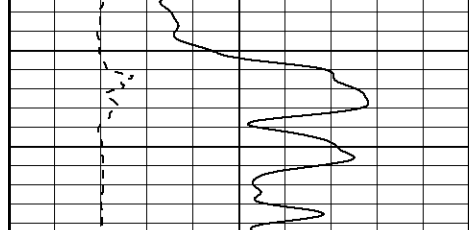


700

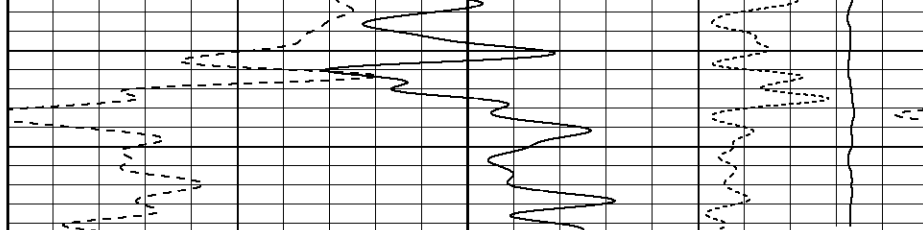


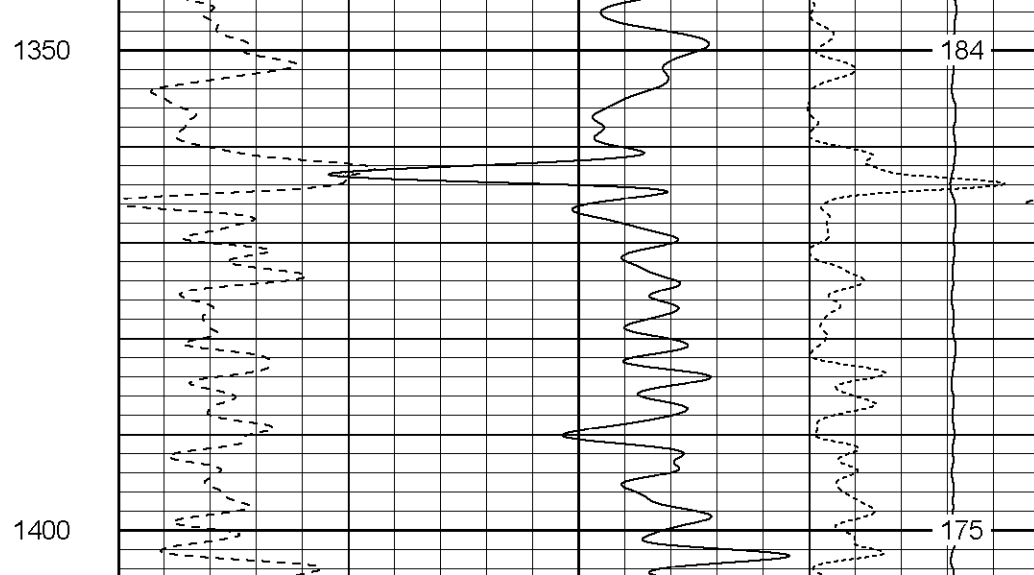
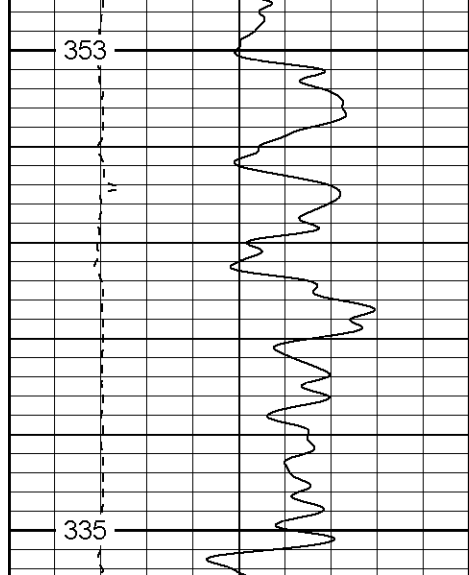
311



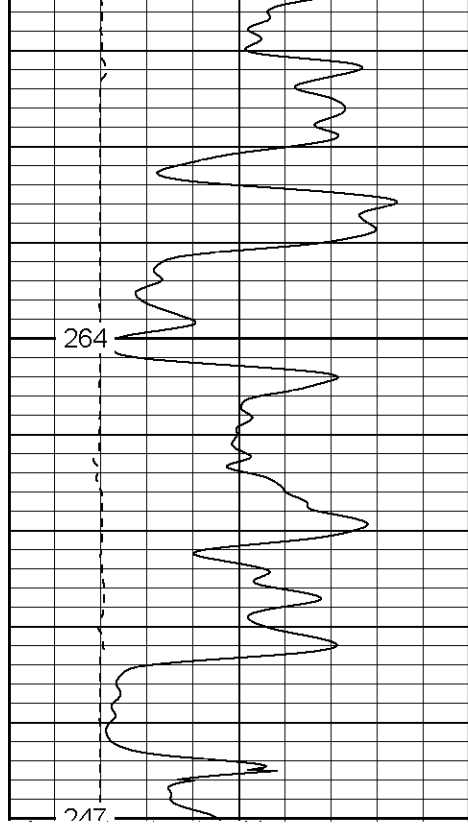


...



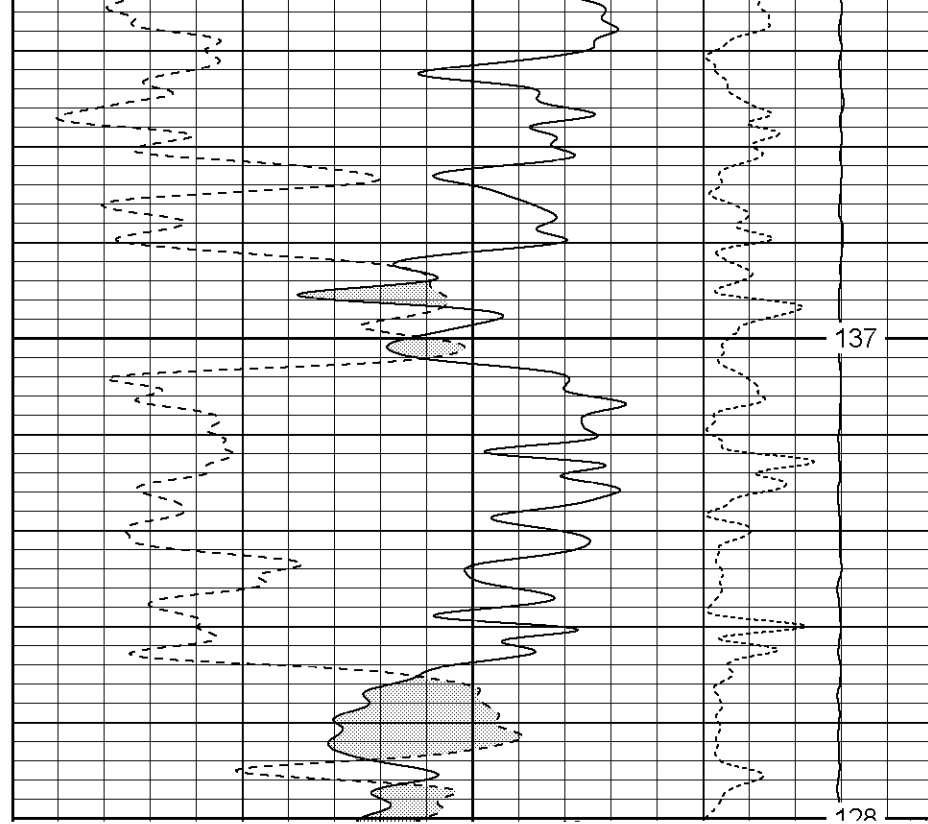




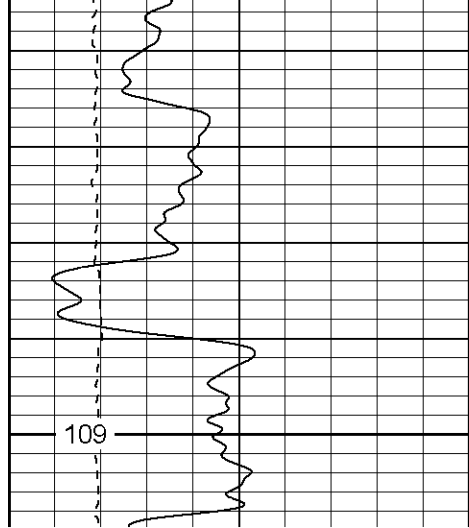


1600

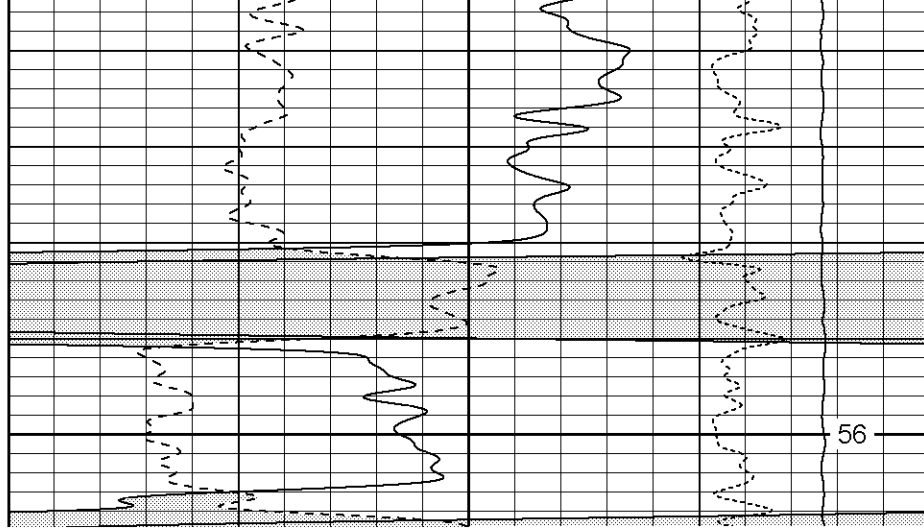
1650

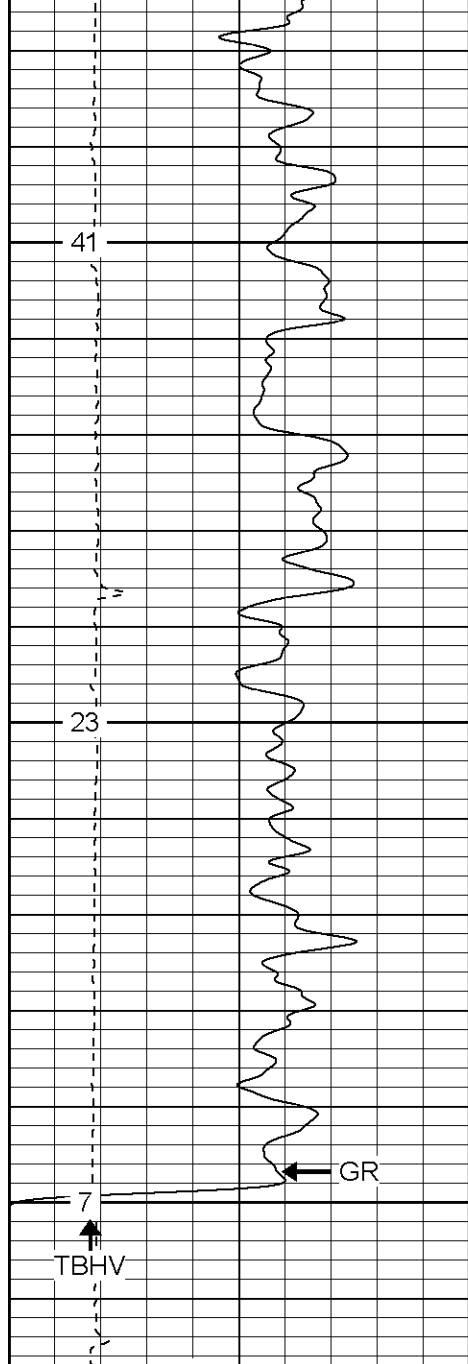




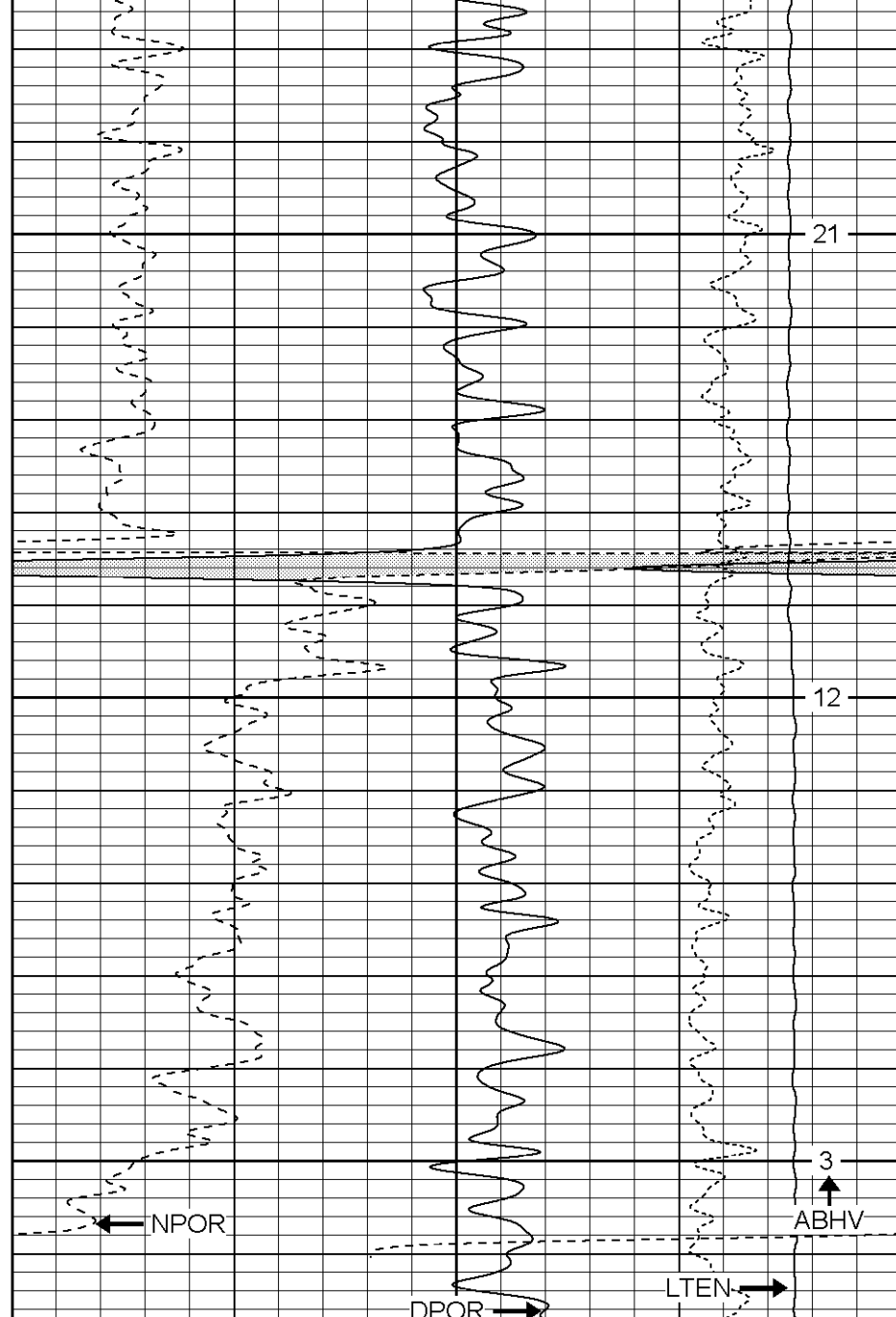


2050





2250  
Fluid Level  
2300  
2350



DCAL (in)										DPOR (psi)									
16										-10									
										-0.5									
										RHOC (g/cc)									
										0.5									
										5000									
										LTEN (lb)									
										0									

-0.5	RHOC (g/cc)	0.5
5000	LTEN (lb)	0

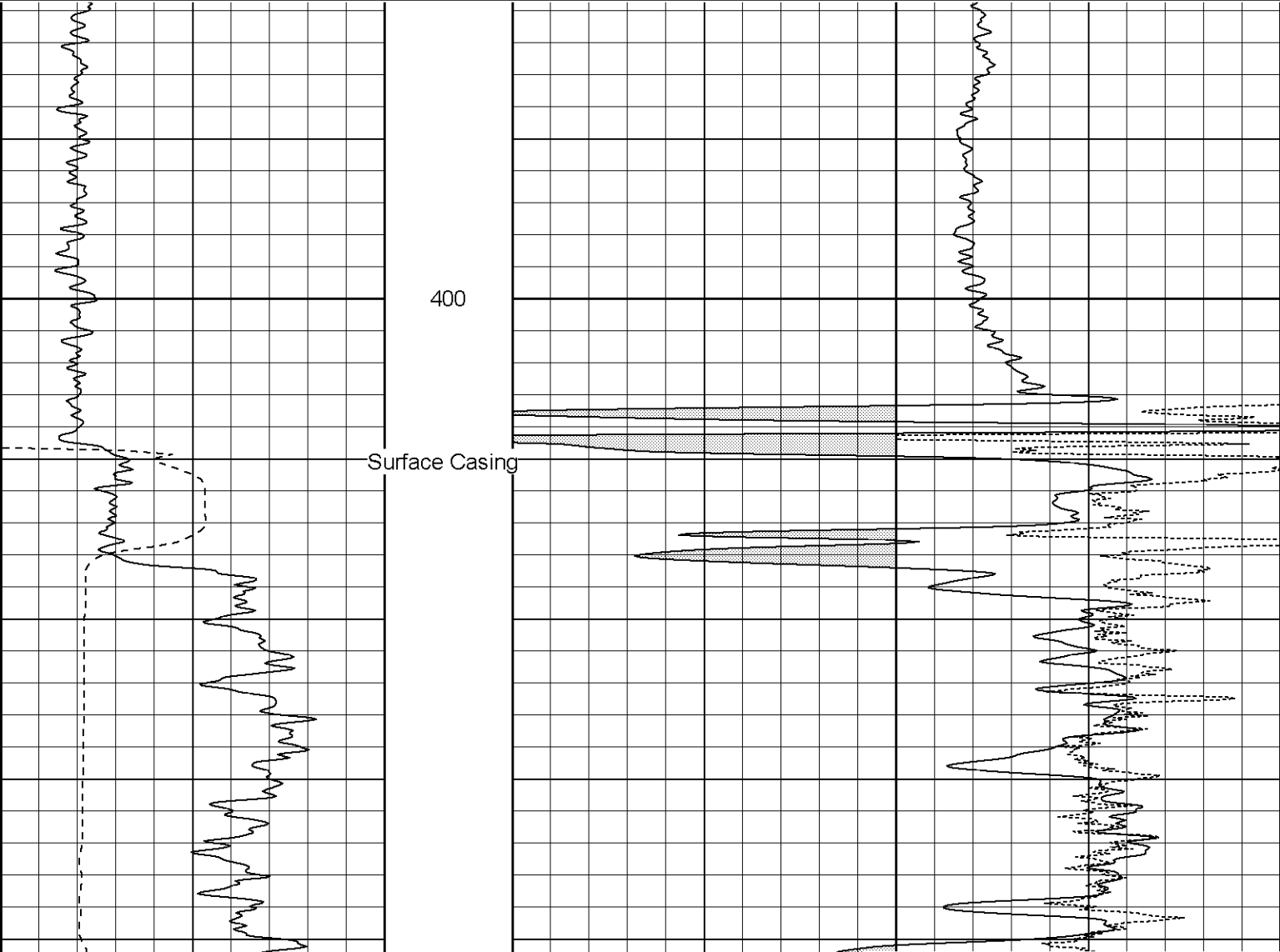
Patterson

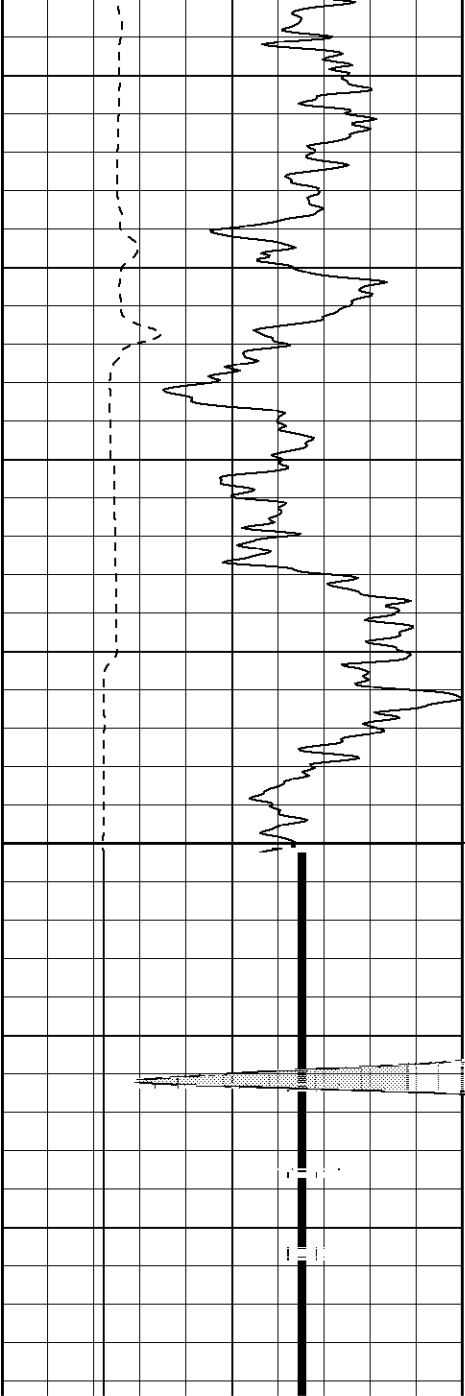
# High Resolution Pass

Database File:
Dataset Pathname:
Presentation Format:
Dataset Creation:
Charted by:

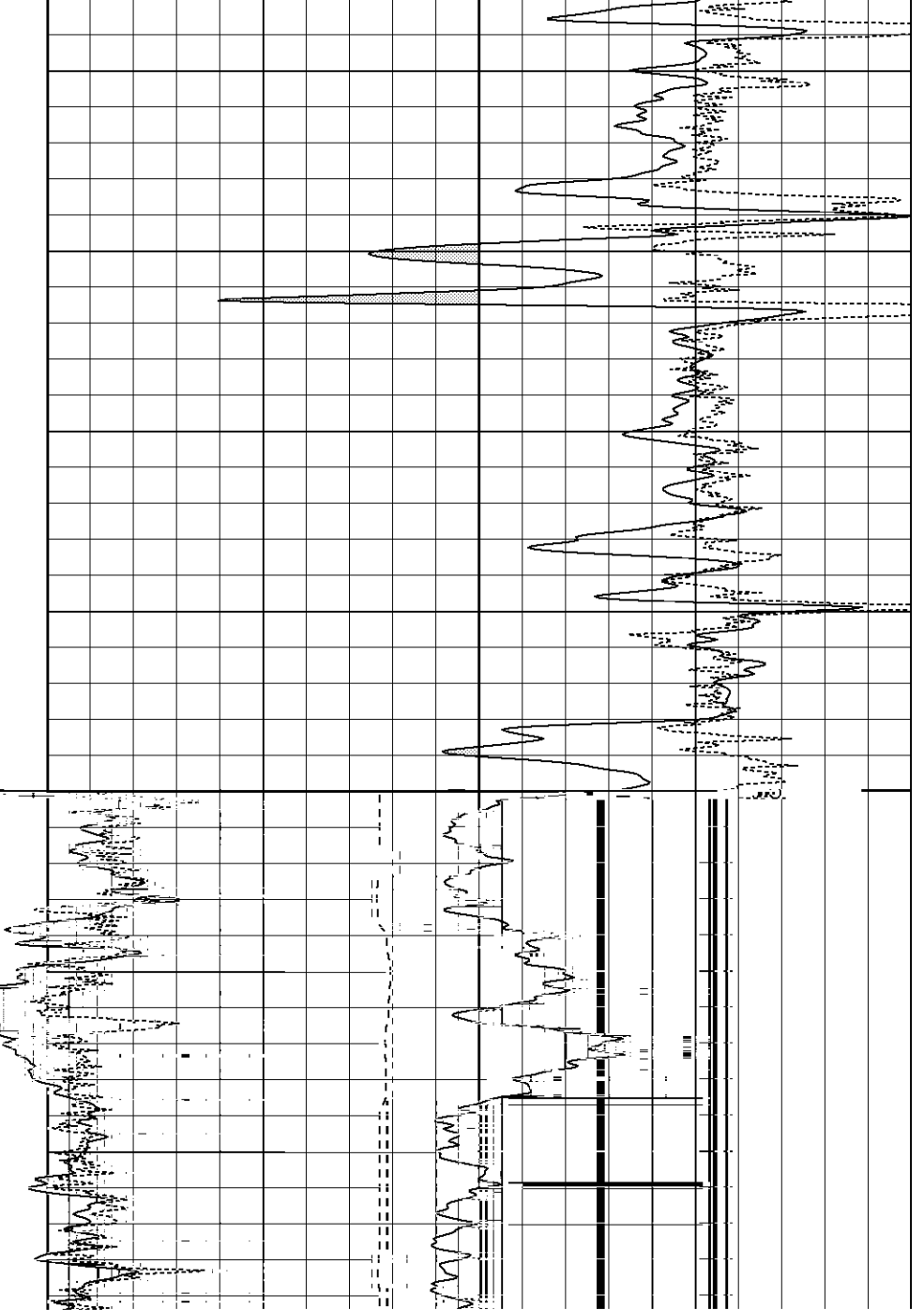
xtoac1115.db
pass4.2
cdlhr
Thu Aug 03 11:51:36 2006 by Calc Warrior 7.0 STD Ope
Depth in Feet scaled 1:120

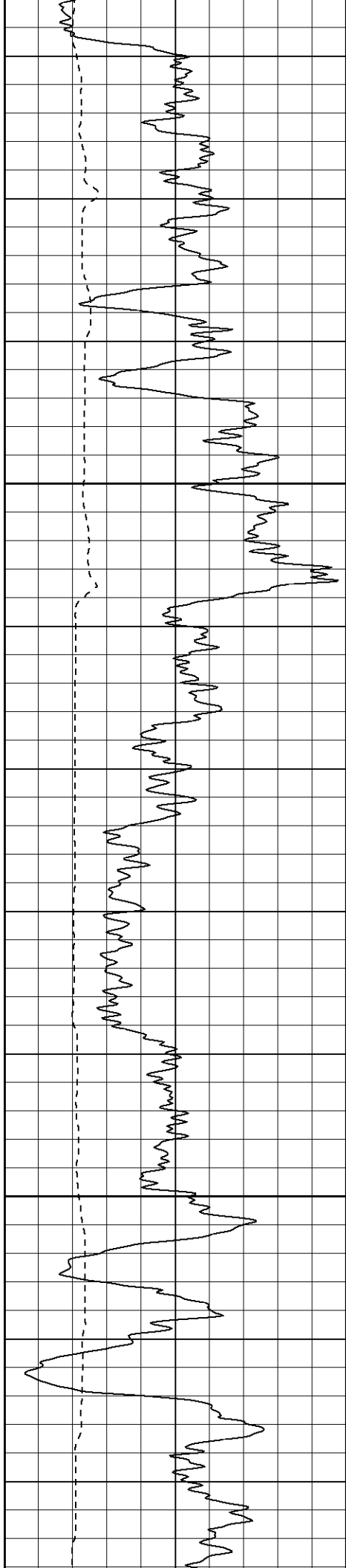
0	GR (GAPI)	200	1	RHOB (g/cc)		3
6	DCAL (in)	16		-0.5	RHOC (g/cc)	0.5
-----				-----		





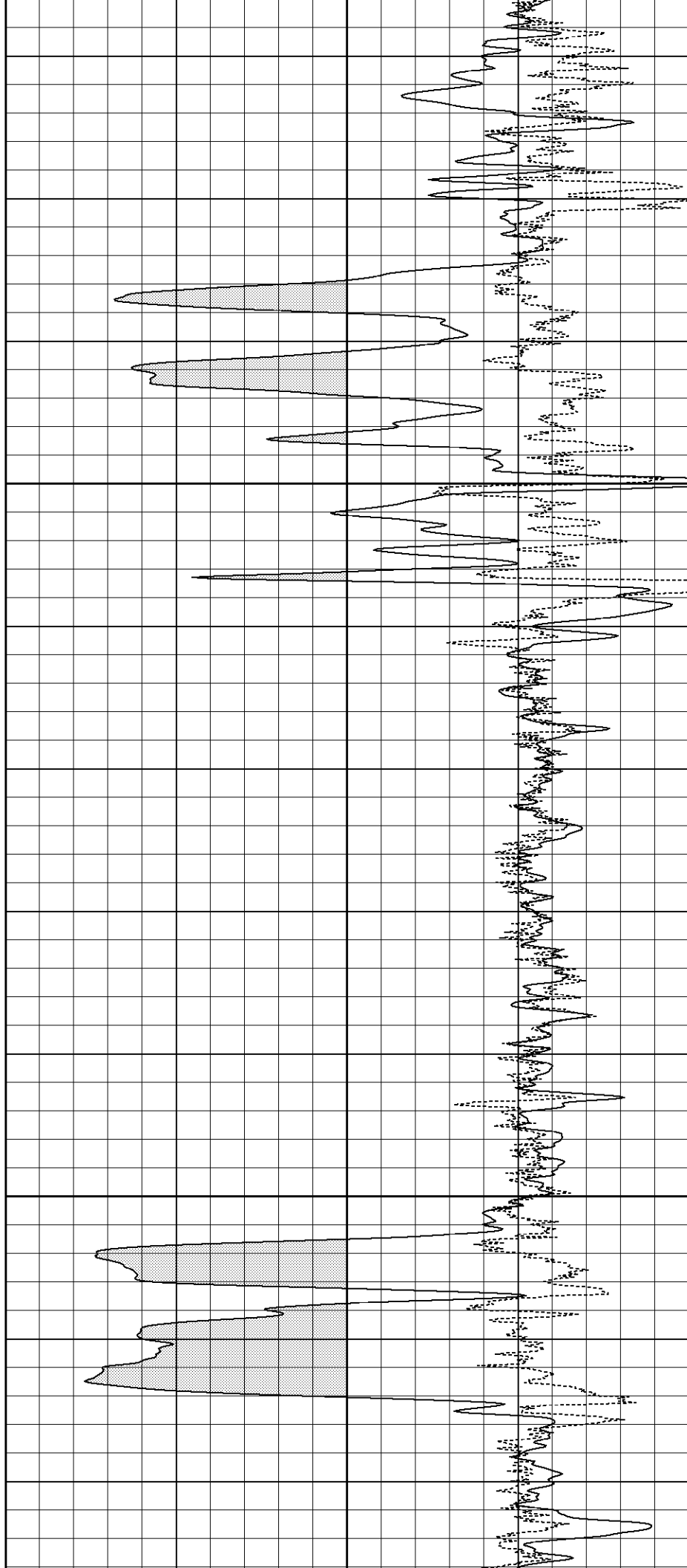
200



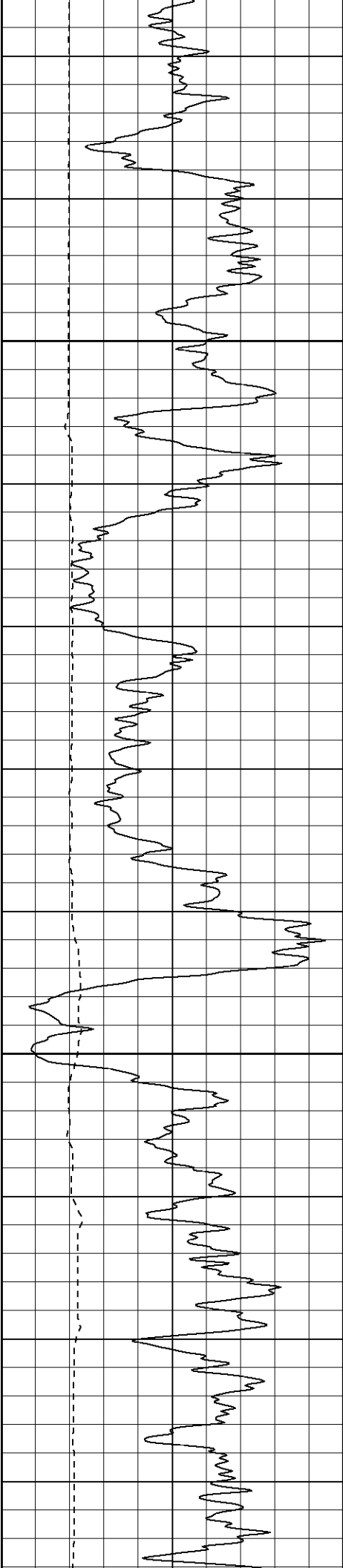


600

650

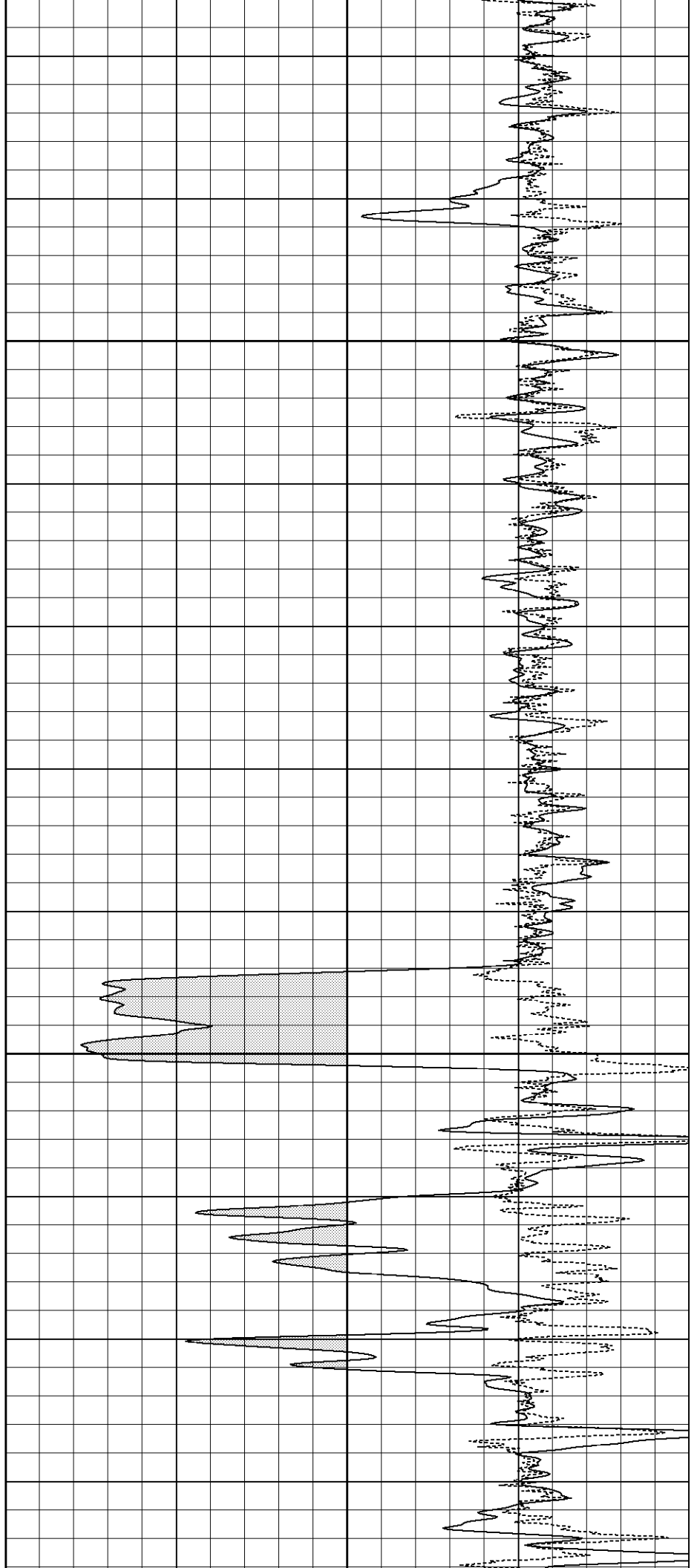


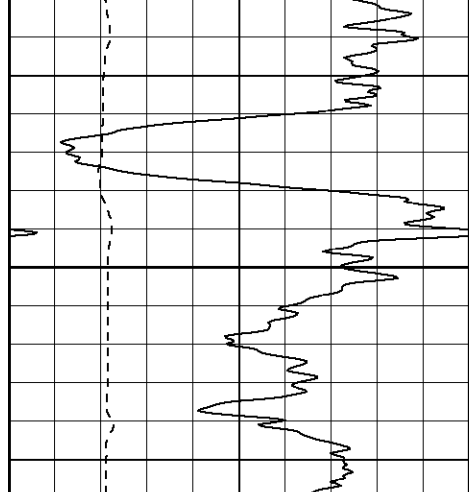




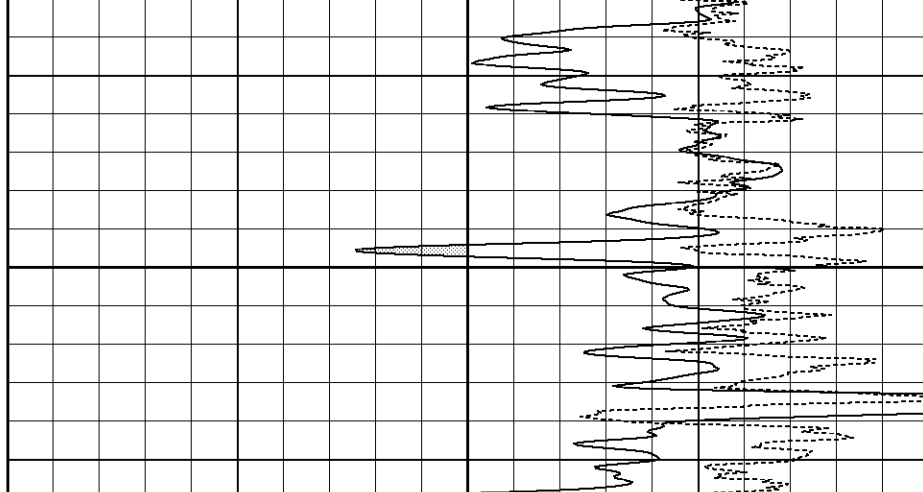
700

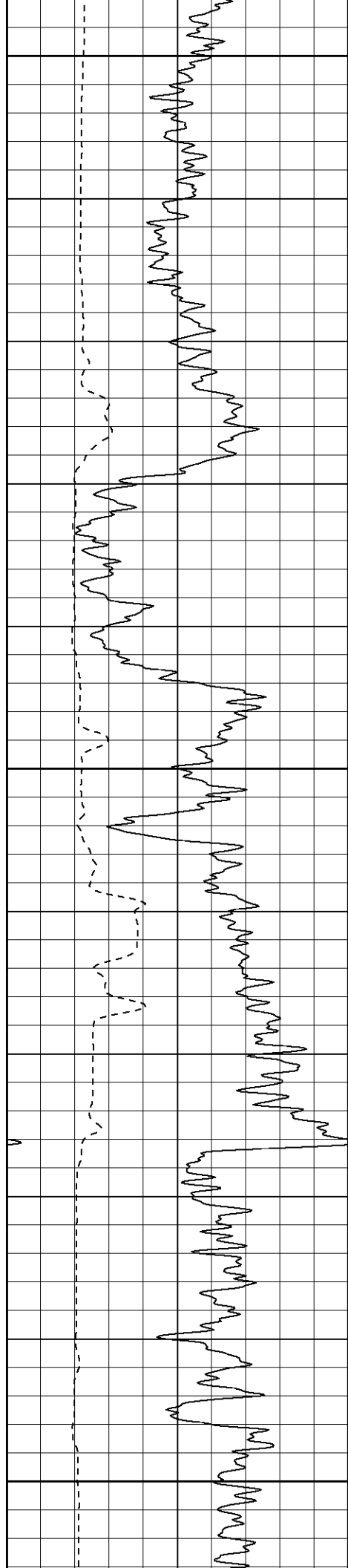
750





800

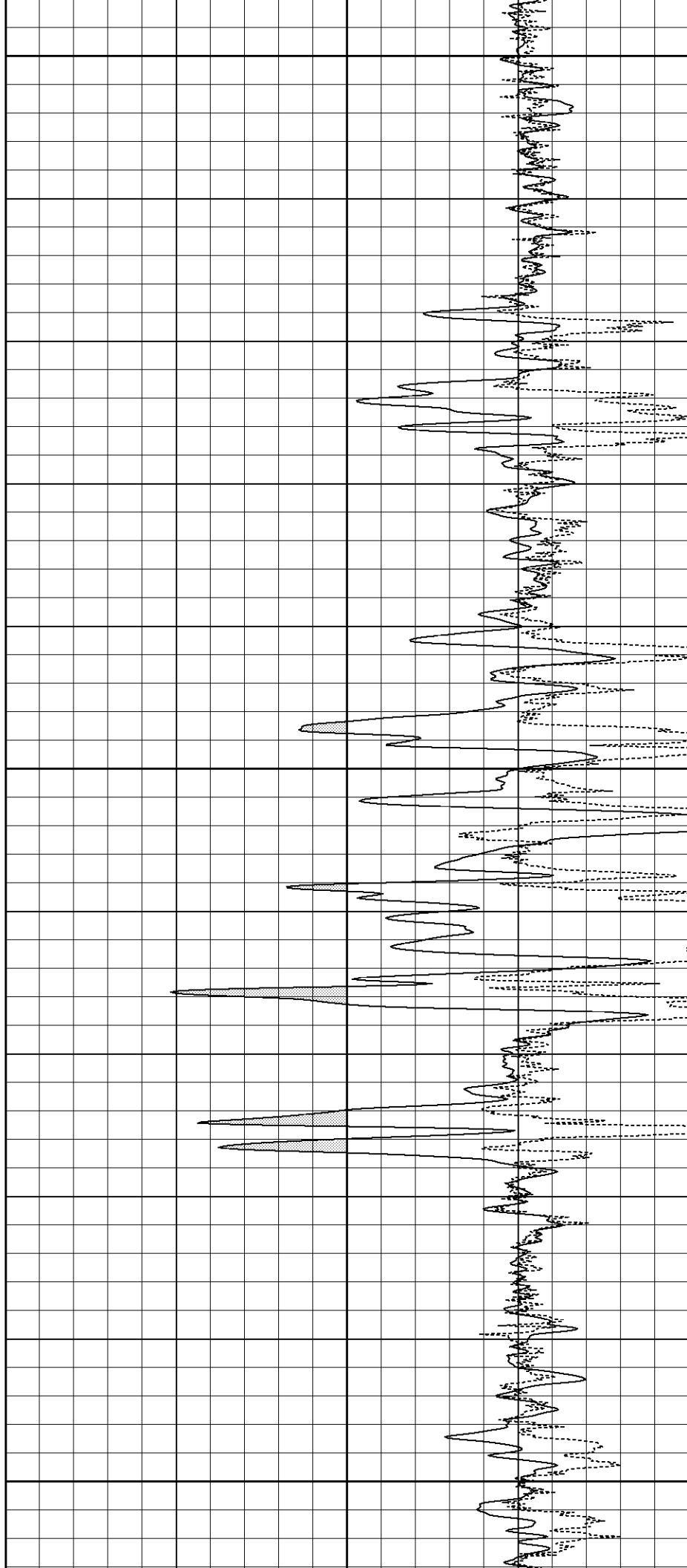


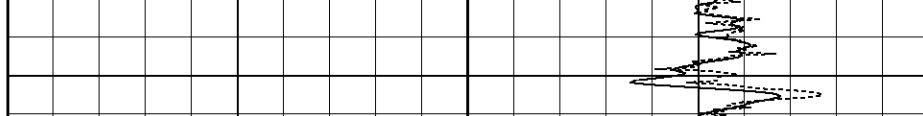
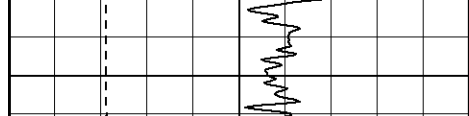


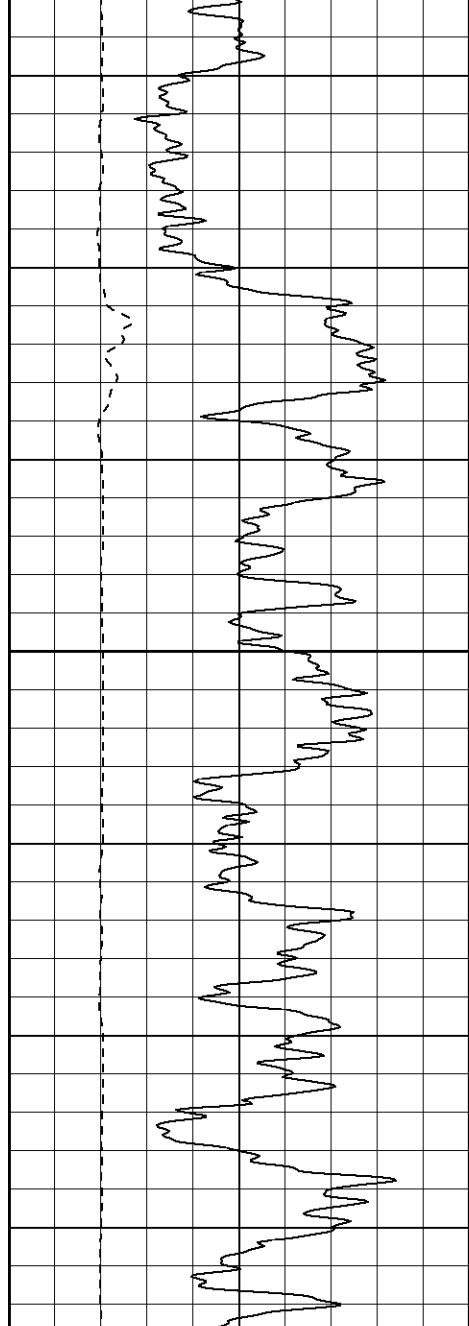
900

950

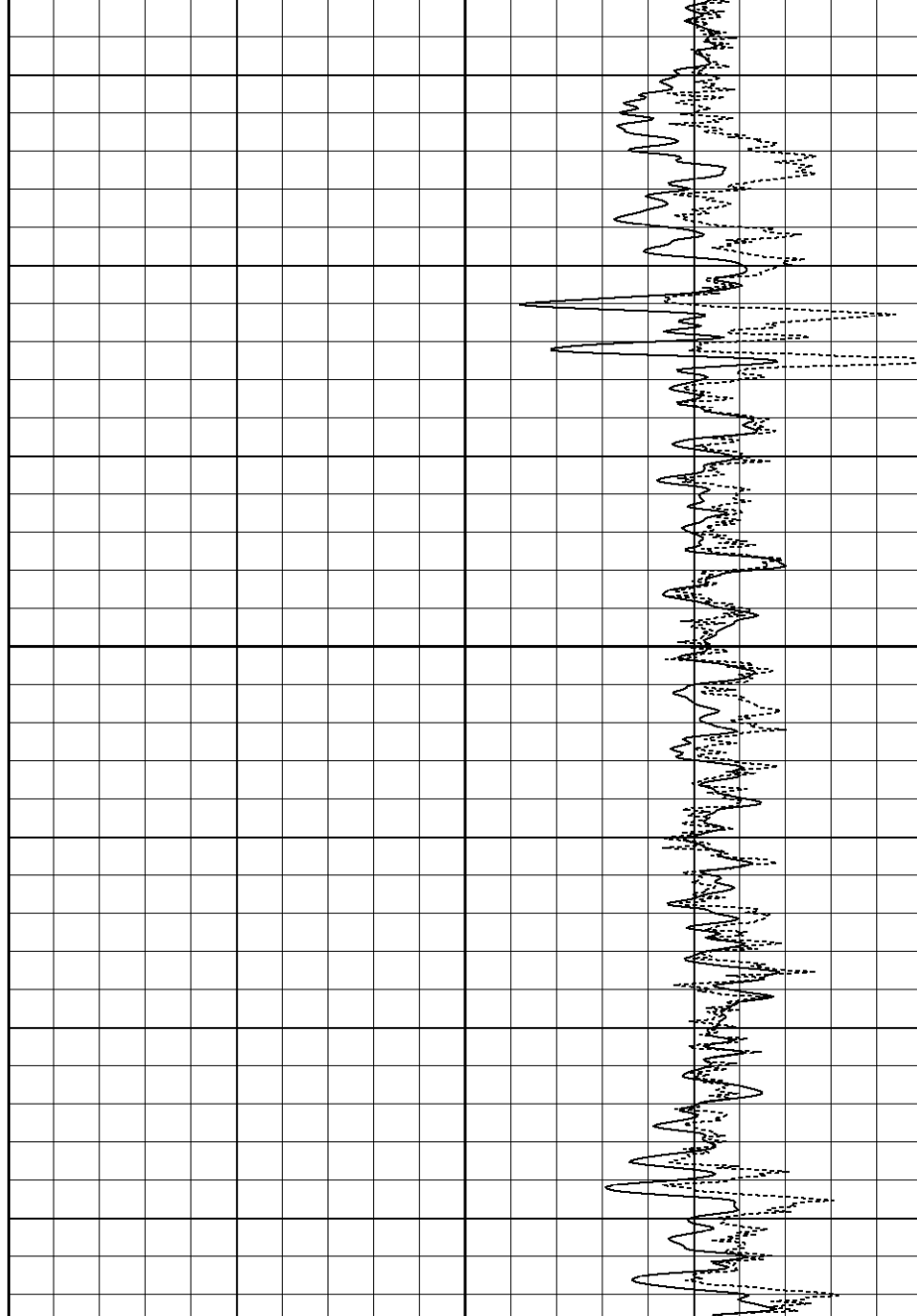
1000



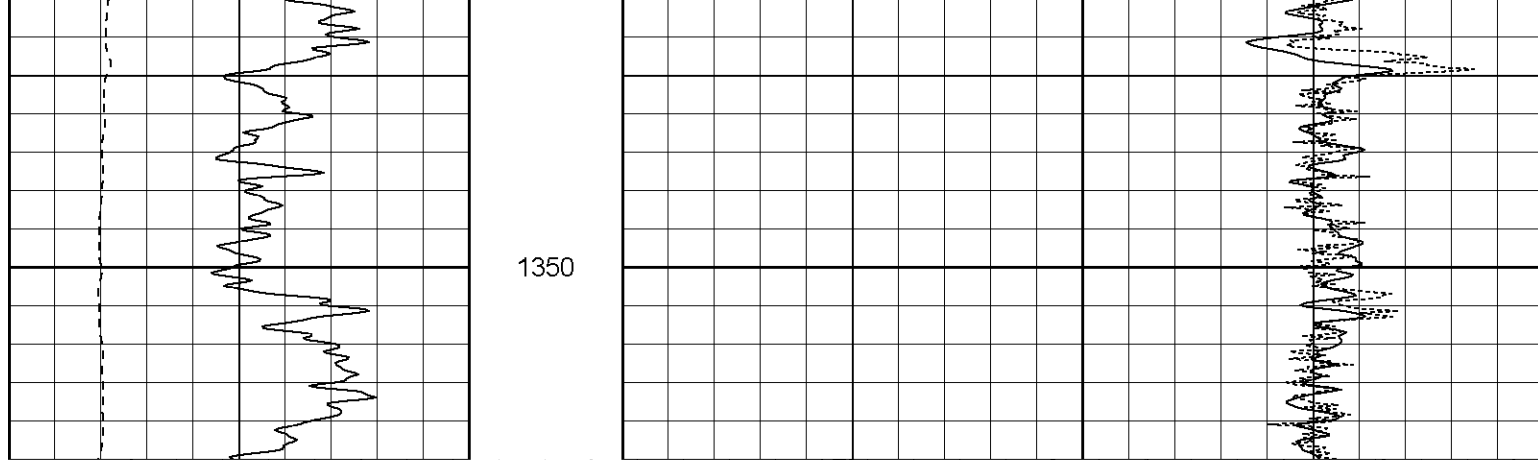


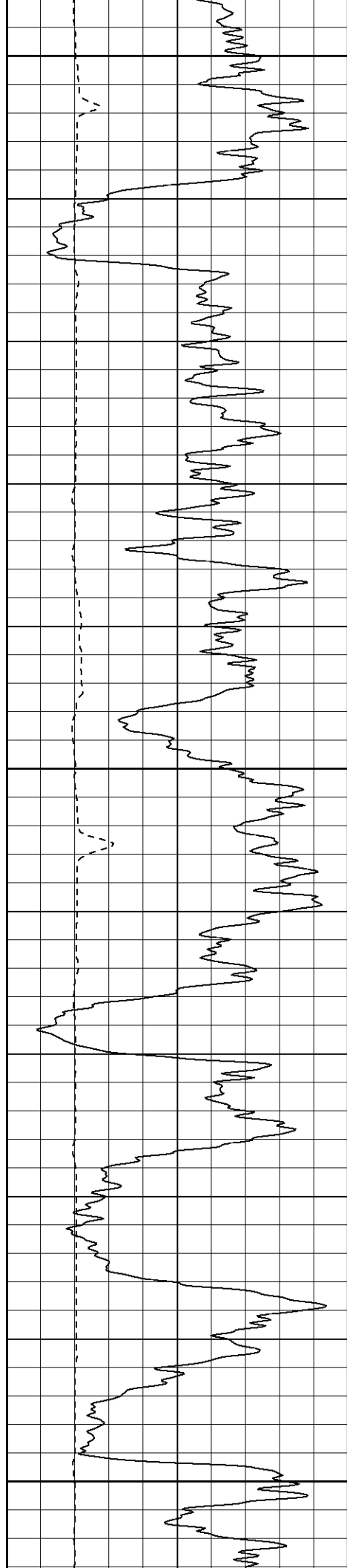


1150





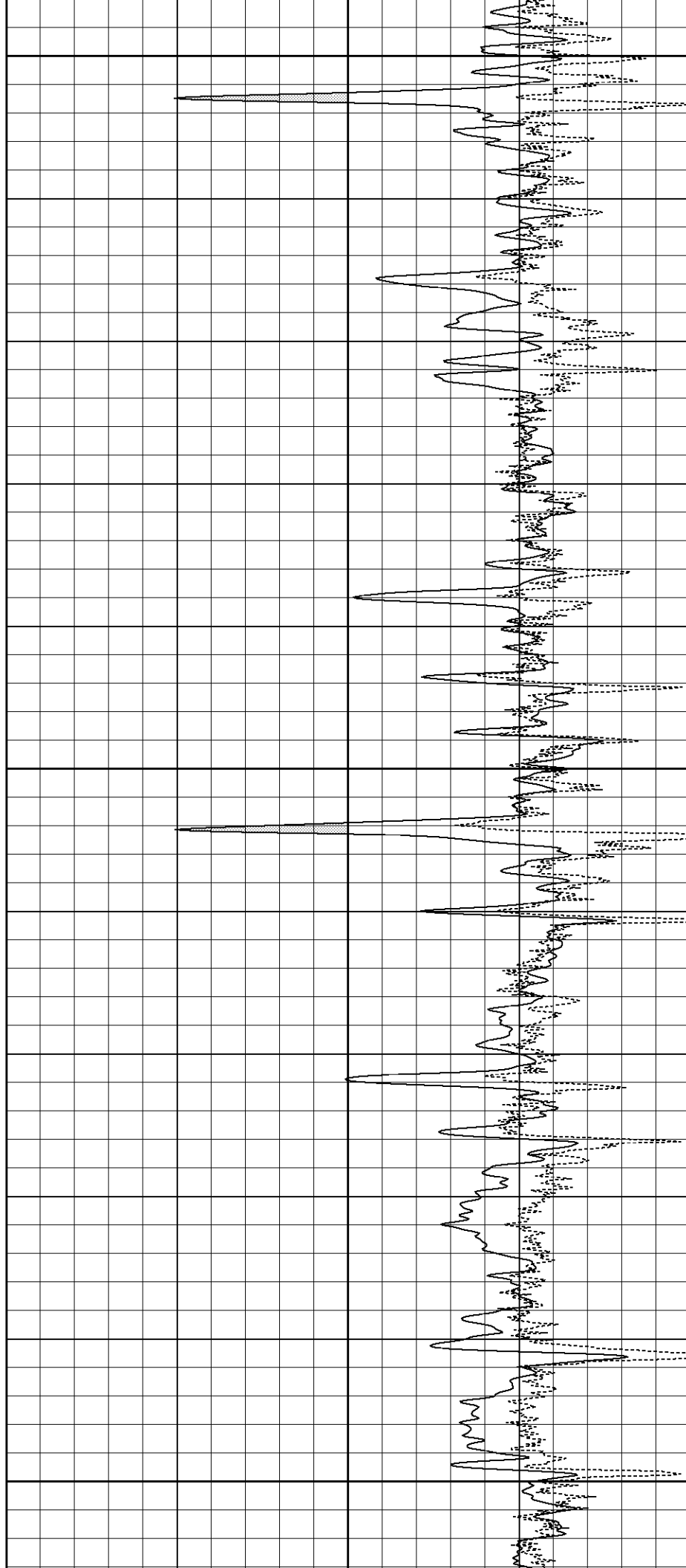




1450

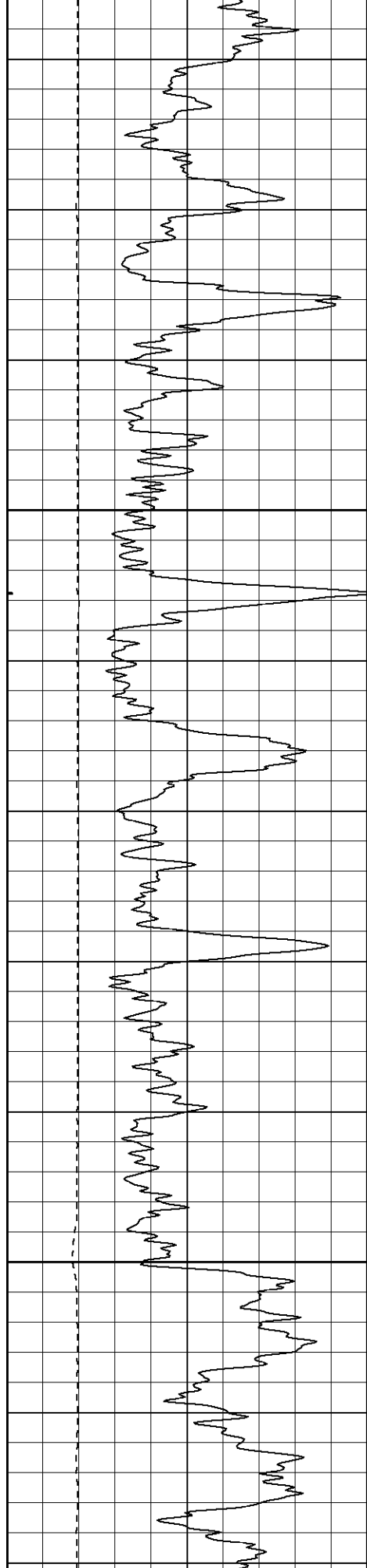
1500

1550



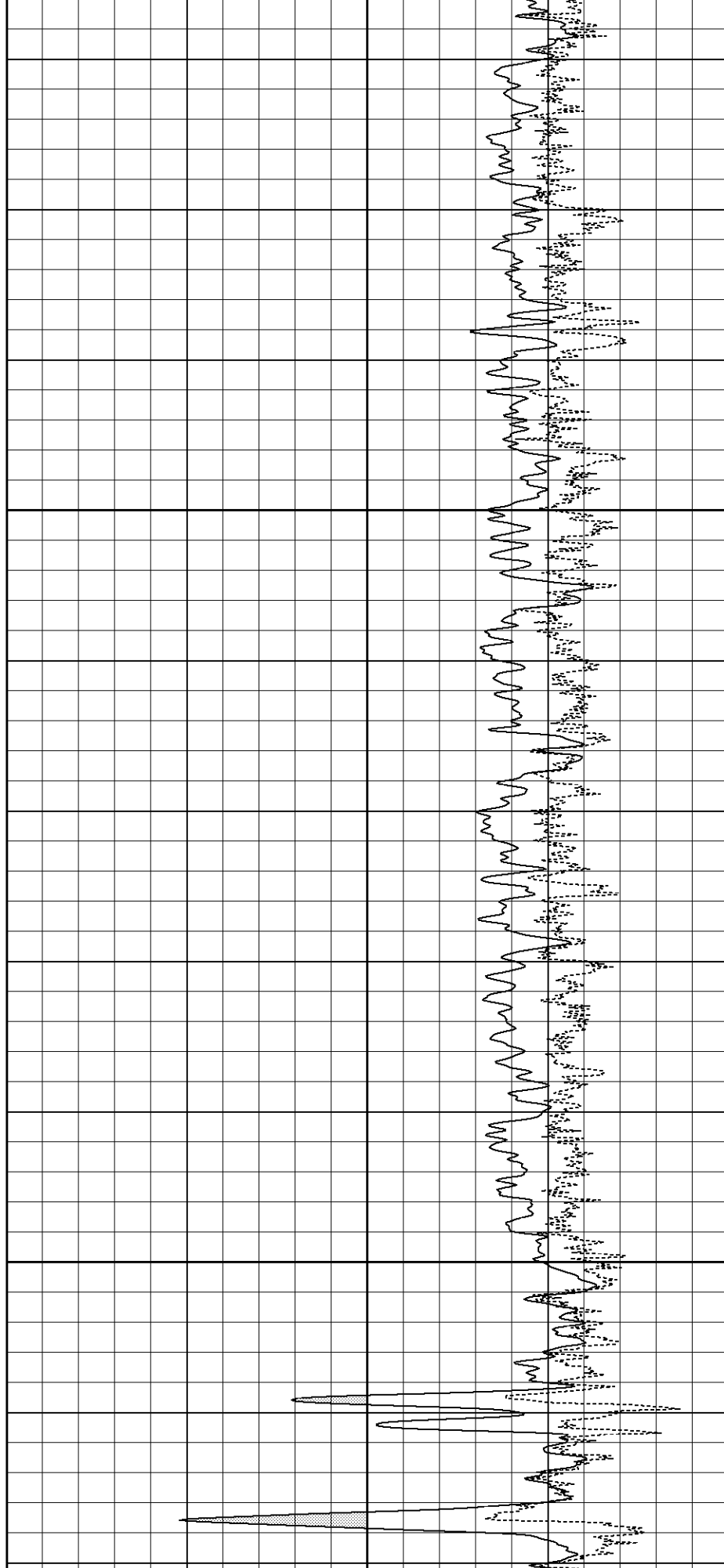


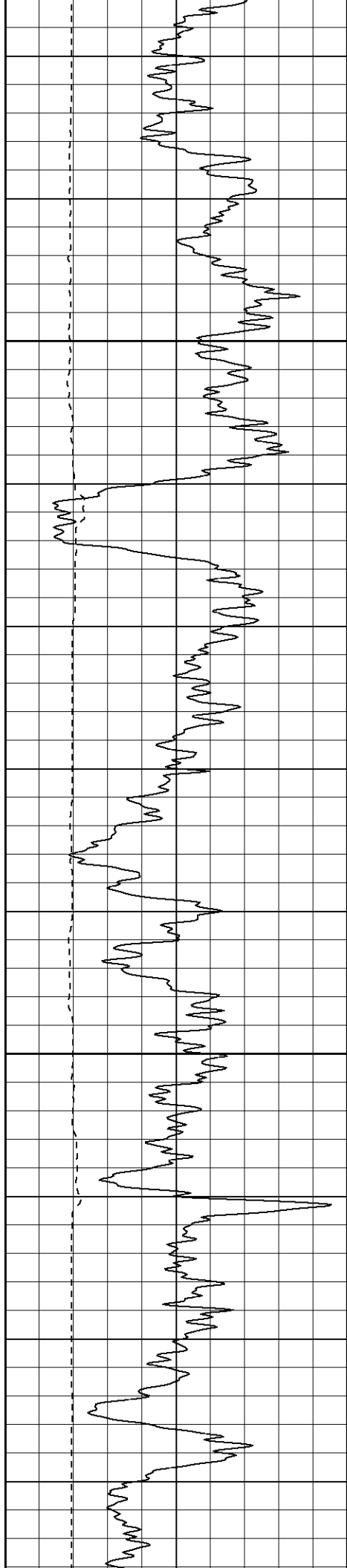




1700

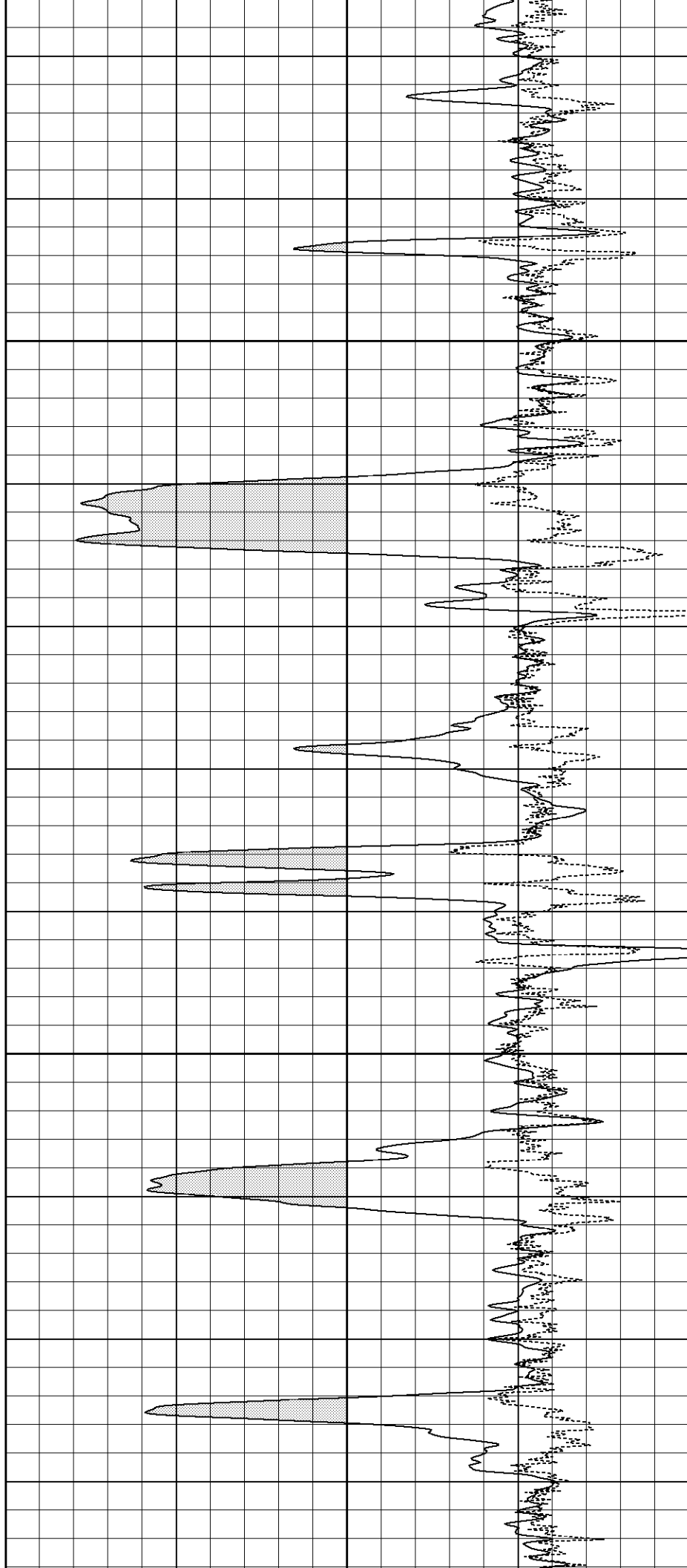
1750

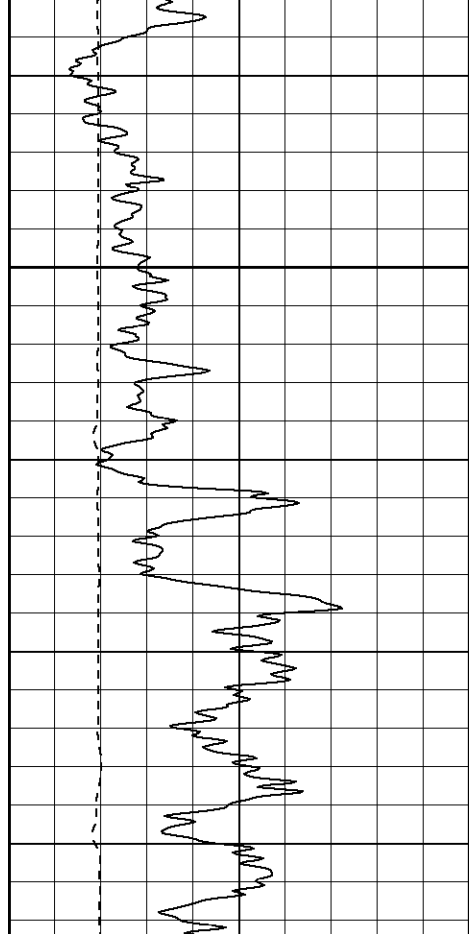




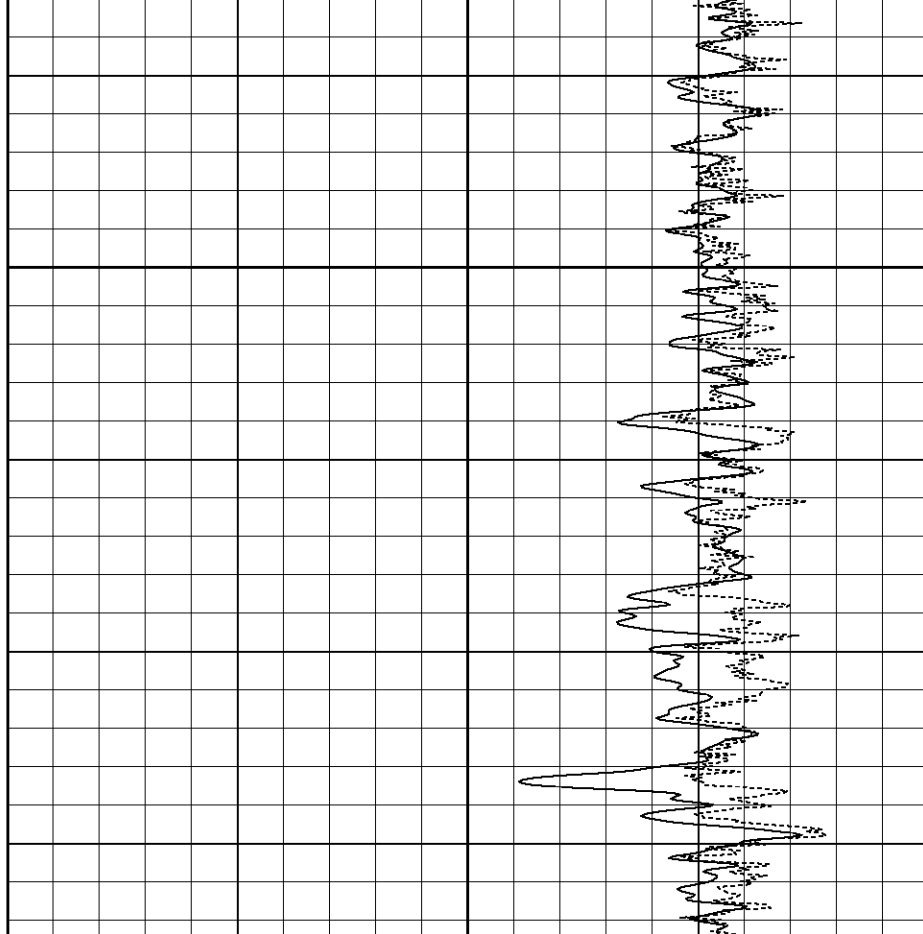
1800

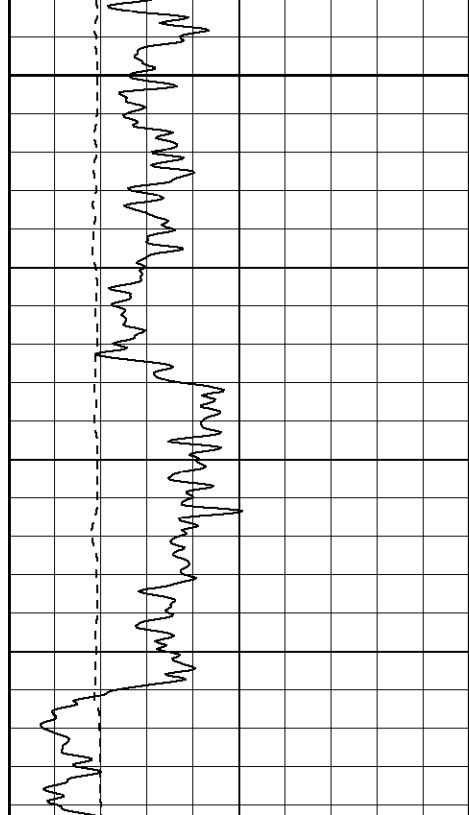
1850



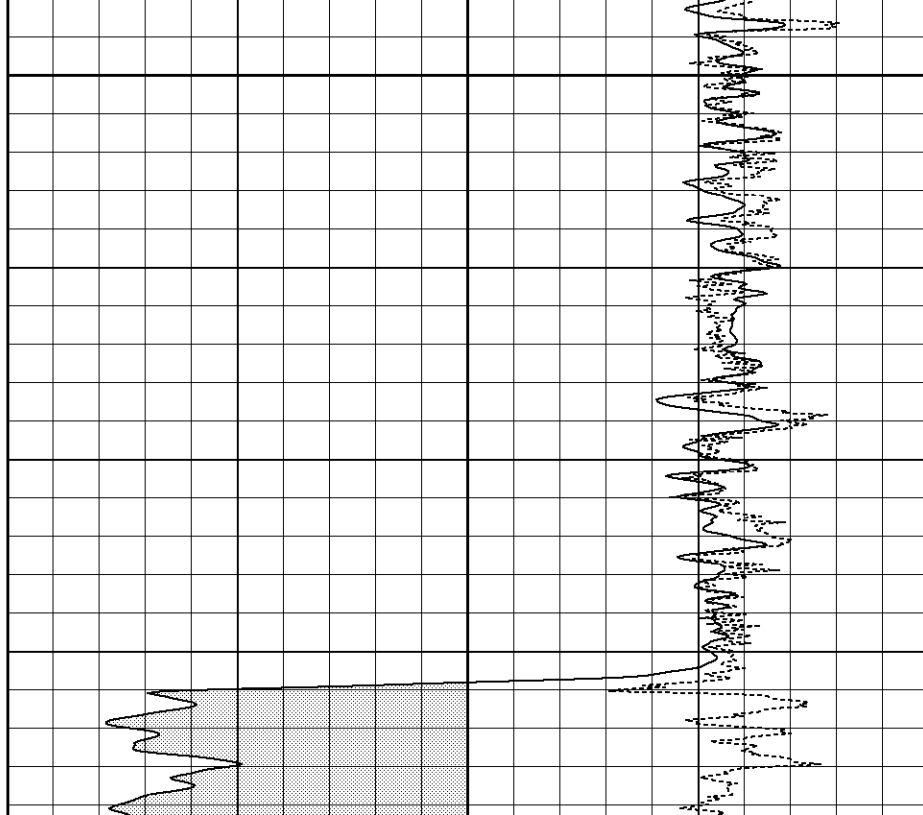


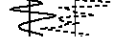
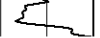
1900

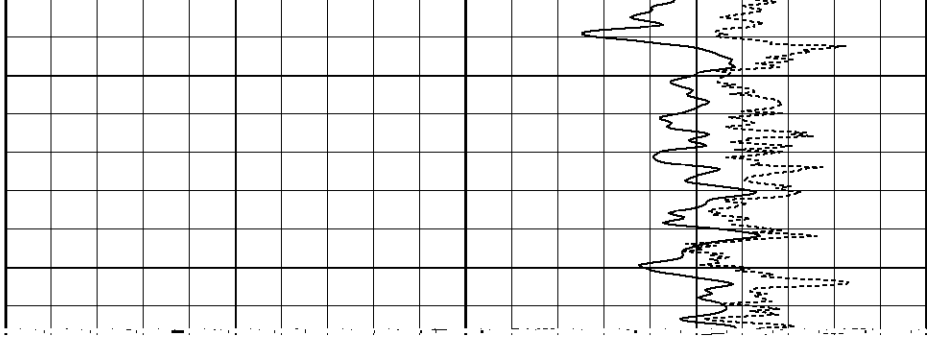
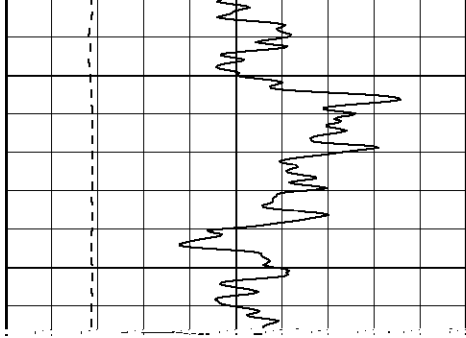


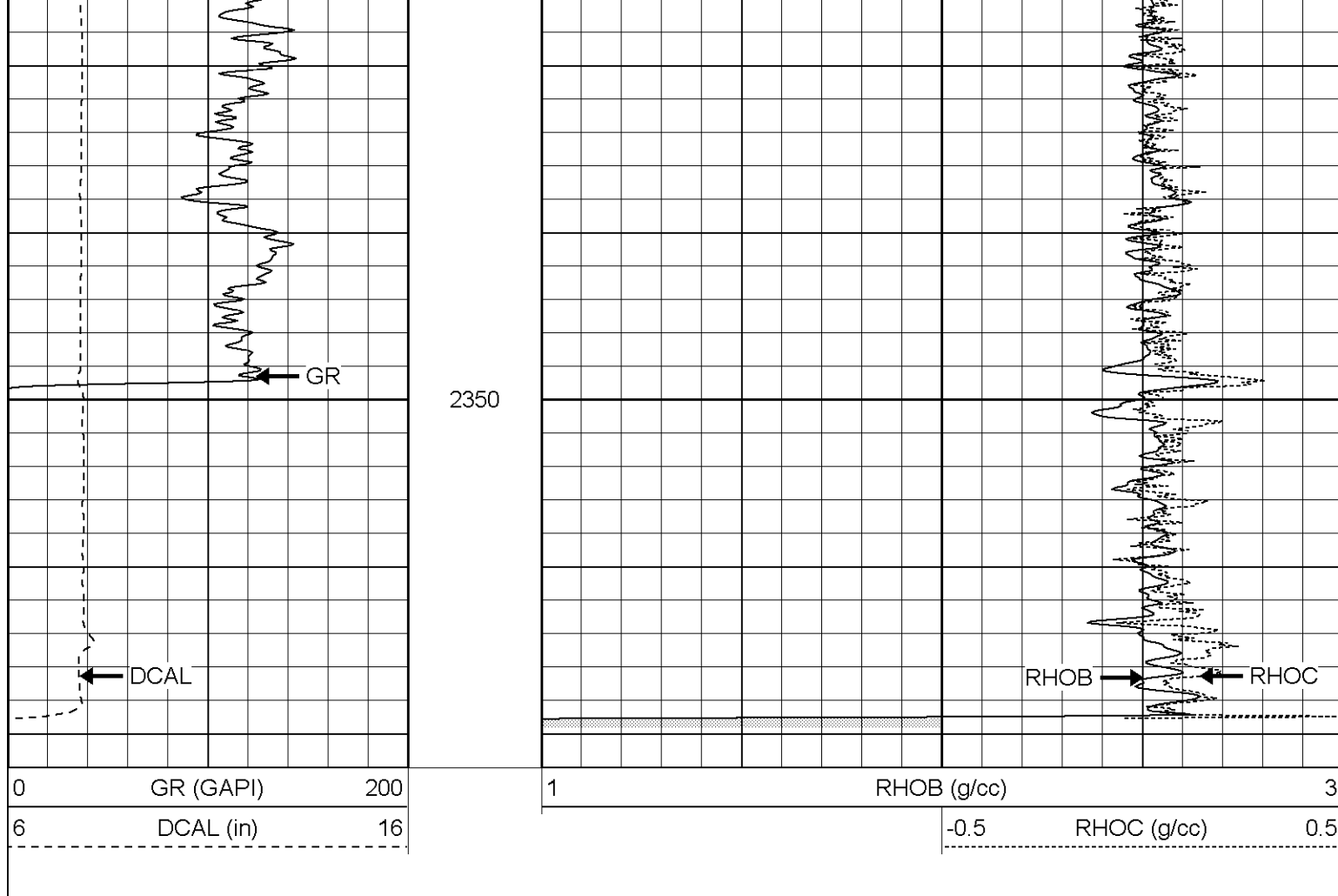


2000









### Compensated Density Calibration Report

Serial-Model: 2118-poilex  
Source / Verifier: /  
Master Calibration Performed: Mon Jul 24 09:38:43 2006

#### Master Calibration

	Density		Far Detector	Near Detector	
Magnesium	1.710	g/cc	692.38	675.28	cps
Aluminum	2.590	g/cc	157.29	466.83	cps

Spine Angle = 76.01

Density/Spine Ratio = 0.576



## Neutron Calibration Report

Serial Number:	5138	
Tool Model:	G	
Performed:	Wed Jul 26 07:53:51 2006	
Calibrator Value:	1	NAPI
Calibrator Reading:	1	cps
Sensitivity:	1	NAPI/cps

Sensor	Offset (ft)	Schematic	Description	Len (ft)	OD (in)	Wt (lb)
NEU	13.49		NEU-G (5138) Gearhart Epithermal	5.75	3.50	85.00
GR	8.69		GR-poilex (2118)	2.60	3.63	70.00
LSD	2.92		CDL-poilex (2118)	6.19	4.00	201.00
DCAL	2.58					
SSD	2.37					
Dataset: /field/well/run1/_plots/_jobs_/cdl Total Length: 14.54 ft Total Weight: 356.00 lb O.D. 4.00 in						