

SCALE: Horiz.: 1" = 80'
Vert. : 1" = 20'

NOTE:
ALL PROPOSED CUT AND FILL
SIDE SLOPES ARE AT 1.5:1
UNLESS OTHERWISE NOTED.



ECLIPSE
surveying

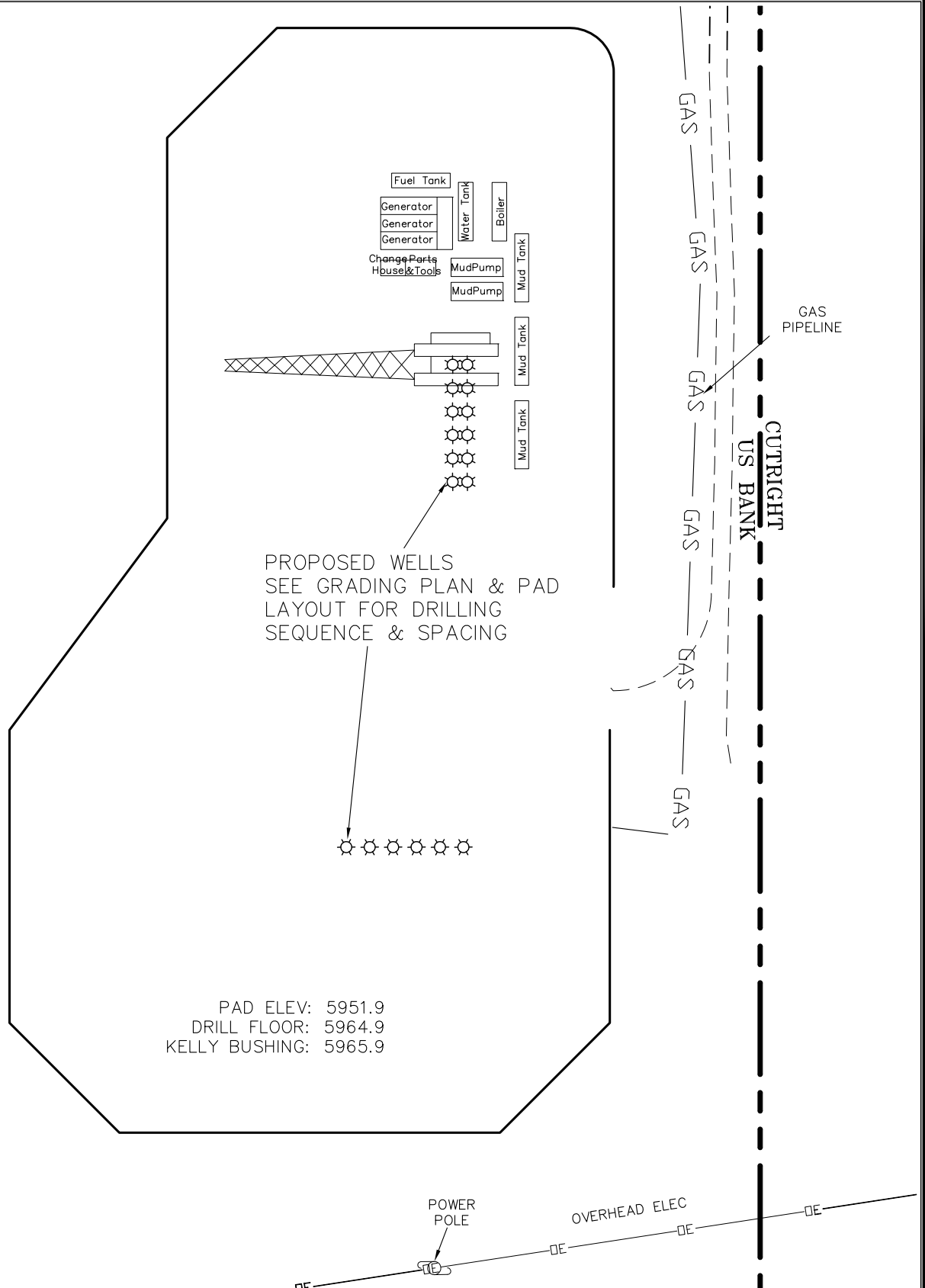
111 E. THIRD ST., SUITE 208, RIFLE, CO 81650
(970) 625-3048

REV. DATE: 01/11/10
SCALE: AS NOTED
DATE: 10/19/09
SHEET: 4 OF 7
PROJECT: WERNER
DFT: JAK



Bill Barrett Corporation

WERNER SWSE-23-692
DRILL PAD CROSS SECTIONS



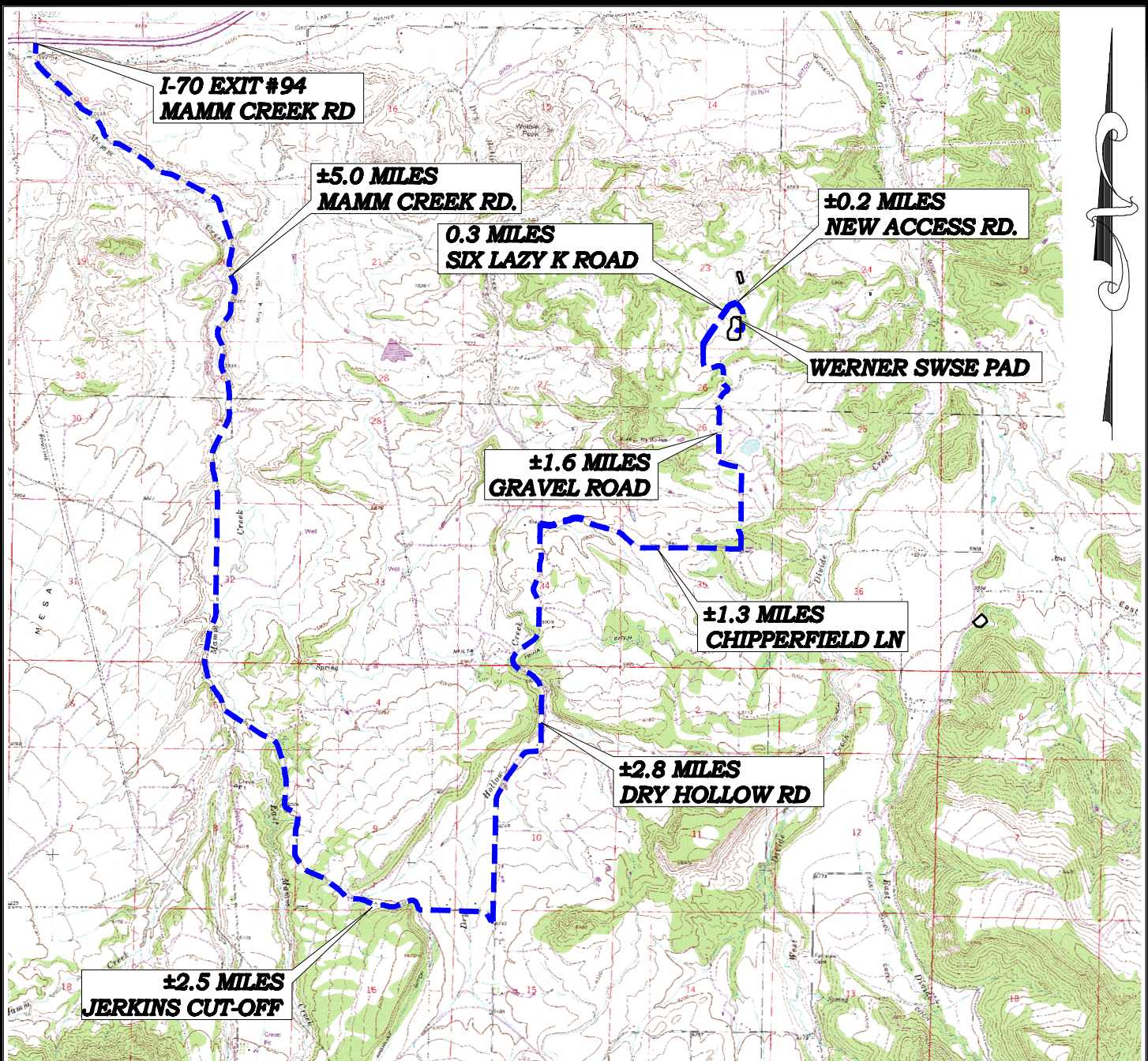
ECLIPSE
surveying

111 E. THIRD ST., SUITE 208, RIFLE, CO 81650
(970) 625-3048

REV. DATE: 01/11/10
SCALE: 1" = 100'
DATE: 10/16/09
SHEET: 5 OF 7
PROJECT: WERNER
DFT: JAK

B Bill Barrett Corporation

WERNER SWSE-23-692
DRILL RIG LAYOUT



DIRECTIONS TO LOCATION:

FROM THE I-70 EXIT #94 (MAMM CREEK EXIT) PROCEED SOUTHERLY ALONG MAMM CREEK ROAD APPROXIMATELY 5.0 MILES TO THE INTERSECTION WITH JERKINS CUT-OFF ON THE LEFT, THEN PROCEED LEFT IN AN EASTERLY DIRECTION ALONG JERKINS CUT-OFF APPROXIMATELY 2.5 MILES TO THE INTERSECTION WITH DRY HOLLOW ROAD, THEN PROCEED LEFT IN A NORTHERLY DIRECTION ALONG DRY HOLLOW ROAD APPROXIMATELY 2.8 MILES TO THE INTERSECTION WITH CHIPPERFIELD LANE ON THE RIGHT, PROCEED RIGHT IN AN EASTERLY DIRECTION ALONG CHIPPERFIELD LANE APPROXIMATELY 1.3 MILES TO AN INTERSECTION WITH A GRAVEL ROAD TO THE LEFT, PROCEED LEFT IN A NORTHERLY DIRECTION ALONG THE GRAVEL ROAD APPROXIMATELY 1.6 MILES TO SIX LAZY K ROAD; THEN PROCEED NORTHEASTERLY APPROXIMATELY .3 MILES TO THE WELL ACCESS ROAD, PROCEED EAST APPROXIMATELY 0.2 MILES TO THE WERNER SWSE 23-692 PAD AS SHOWN HEREON.



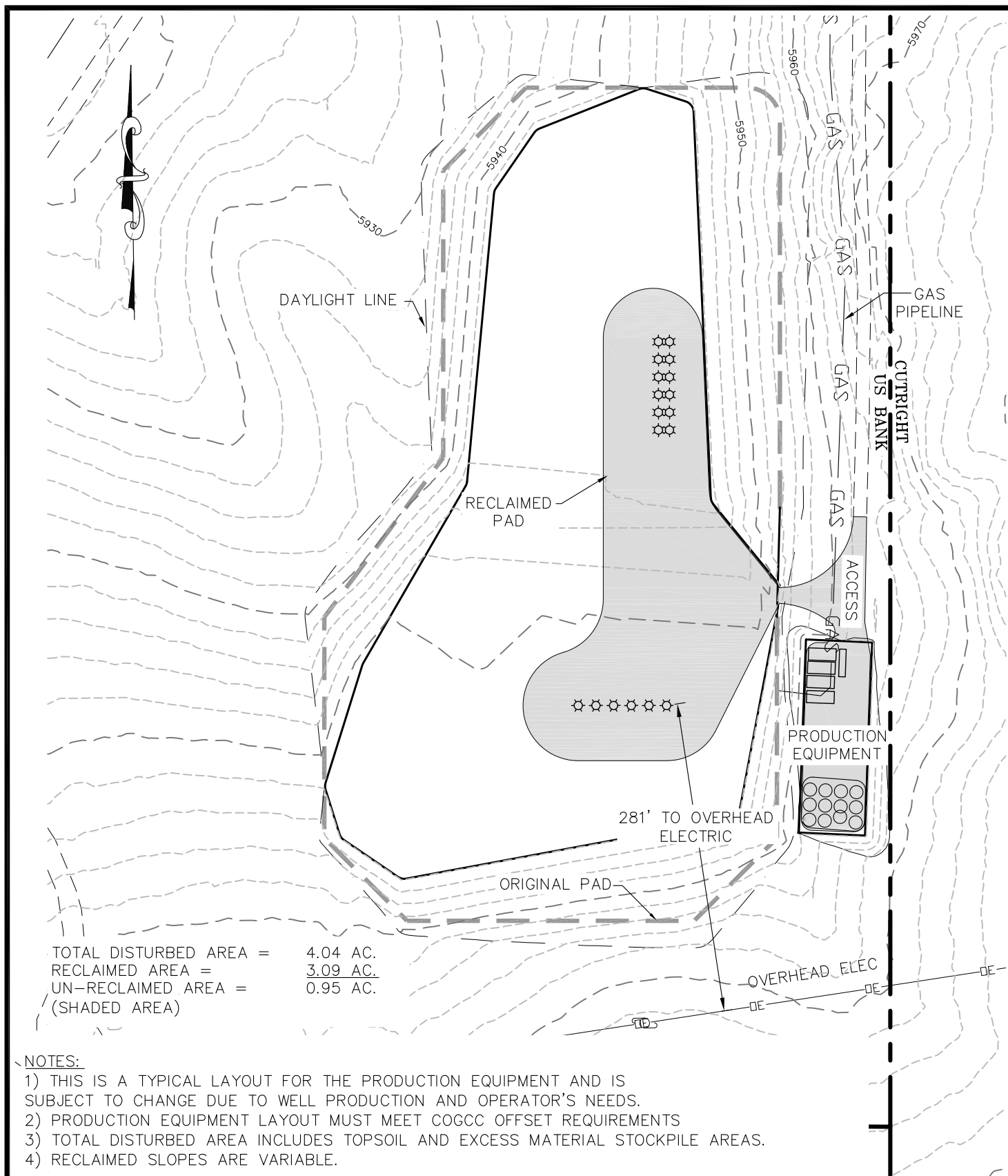
ECLIPSE
surveying

111 E. THIRD ST., SUITE 208, RIFLE, CO 81650
(970) 625-3048

REV. DATE: 01/11/10
SCALE: 1"=5000'
DATE: 10/16/09
SHEET: 6 OF 7
PROJECT: WERNER
DFT: JAK

B Bill Barrett Corporation

WERNER SWSE-23-692
ACCESS & VICINITY MAP



ECLIPSE
surveying

111 E. THIRD ST., SUITE 208, RIFLE, CO 81650
(970) 625-3048

REV. DATE: 01/11/10
 SCALE: 1" = 120'
 DATE: 10/16/09
 SHEET: 7 OF 7
 PROJECT: WERNER
 DFT: JAK



Bill Barrett Corporation

WERNER SWSE-23-692
 RECLAIMED PAD &
 PRODUCTION EQUIPMENT