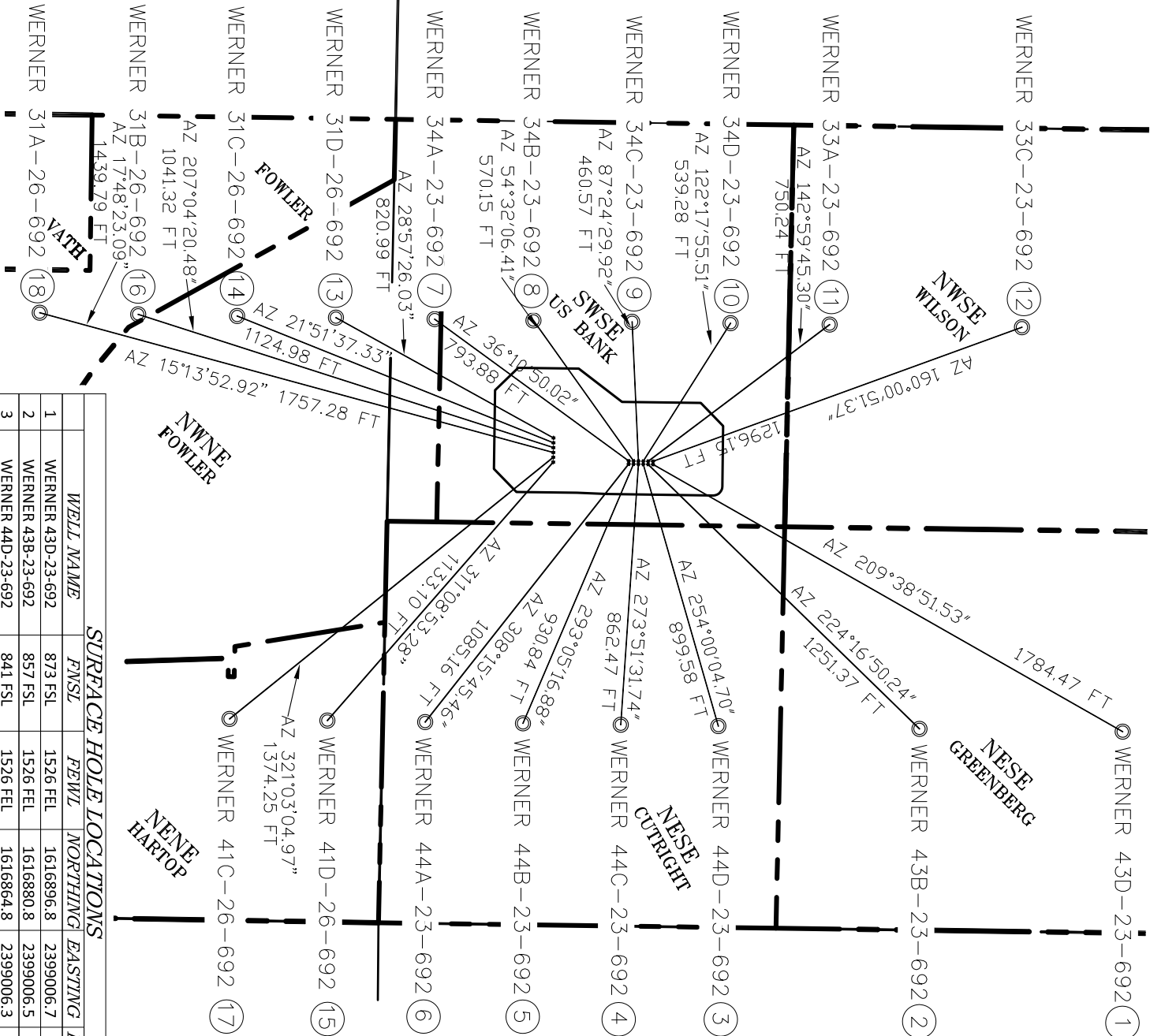


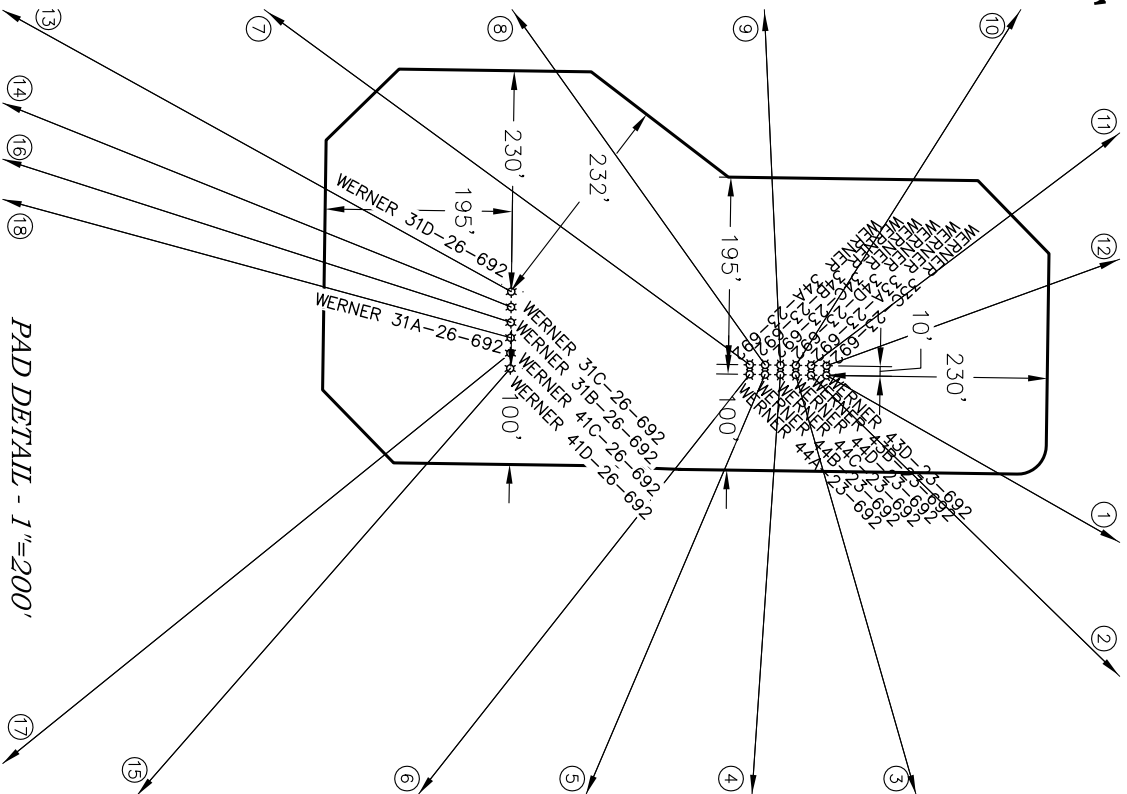
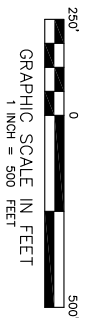
WELL INTERFERENCE EXHIBIT

WERNER SWSE-23-692

NAD 83 COLORADO CENTRAL ZONE



*NOTE: THE FINISHED PAD ELEVATION FOR PAD 1 IS 5943.1'
LATITUDE & LONGITUDE ARE IN DECIMAL DEGREE FORMAT



BOTTOM HOLE LOCATIONS					
WELL NAME	FNSL	FEWL	NORTHING	EASTING	LATITUDE\LONGITUDE
1 WERNER 43D-23-692	2443 FSL	665 FEL	1618447.6	2399889.5	39.512128 -107.627222
2 WERNER 43B-23-692	1777 FSL	665 FEL	1617776.6	2399880.2	39.510286 -107.627199
3 WERNER 44D-23-692	1108 FSL	665 FEL	2399871.0	39.508463	-107.627176
4 WERNER 44C-23-692	786 FSL	665 FEL	1616790.7	2399866.6	39.507579 -107.627165
5 WERNER 44B-23-692	463 FSL	665 FEL	1616467.7	2399862.1	39.506692 -107.627154
6 WERNER 44A-23-692	140 FSL	665 FEL	1616144.8	2399857.7	39.505805 -107.627143
7 WERNER 34A-23-692	143 FSL	1996 FEL	1616176.1	2398527.0	39.505806 -107.631861
8 WERNER 34B-23-692	469 FSL	1996 FEL	1616502.1	2398531.5	39.506701 -107.631872
9 WERNER 34C-23-692	795 FSL	1996 FEL	1616828.1	2398536.0	39.507596 -107.631883
10 WERNER 34D-23-692	1120 FSL	1996 FEL	1617153.1	2398540.5	39.508488 -107.631894
11 WERNER 33A-23-692	1447 FSL	1996 FEL	1617480.0	2398545.0	39.509386 -107.631905
12 WERNER 33C-23-692	2082 FSL	1996 FEL	1618115.0	2398553.7	39.511129 -107.631927
13 WERNER 31D-26-692	183 FNL	1996 FEL	1615850.1	2398522.0	39.504911 -107.631851
14 WERNER 31C-26-692	509 FNL	1996 FEL	1615524.2	2398516.6	39.504016 -107.631843
15 WERNER 41D-26-692	183 FNL	665 FEL	1615821.8	2399851.7	39.504919 -107.627134
16 WERNER 31B-26-692	836 FNL	1996 FEL	1615197.2	2398511.2	39.503118 -107.631835
17 WERNER 41C-26-692	506 FNL	665 FEL	1615498.8	2399847.4	39.504032 -107.627126
18 WERNER 31A-26-692	1161 FNL	1996 FEL	1614872.3	2398505.8	39.502226 -107.631827

SURFACE HOLE LOCATIONS					
WELL NAME	FNSL	FEWL	NORTHING	EASTING	LATITUDE\LONGITUDE
1 WERNER 43D-23-692	873 FSL	1526 FEL	1616896.8	2399006.7	39.507815 -107.630221
2 WERNER 43B-23-692	857 FSL	1526 FEL	1616880.8	2399006.5	39.507771 -107.630220
3 WERNER 44D-23-692	841 FSL	1526 FEL	1616864.8	2399006.3	39.507727 -107.630219
4 WERNER 44C-23-692	825 FSL	1526 FEL	1616848.8	2399006.1	39.507683 -107.630219
5 WERNER 44B-23-692	809 FSL	1526 FEL	1616832.8	2399005.8	39.507639 -107.630218
6 WERNER 44A-23-692	793 FSL	1526 FEL	1616816.8	2399005.6	39.507595 -107.630218
7 WERNER 34A-23-692	793 FSL	1536 FEL	1616816.9	2398995.6	39.507595 -107.630253
8 WERNER 34B-23-692	809 FSL	1536 FEL	1616832.9	2398995.8	39.507639 -107.630254
9 WERNER 34C-23-692	825 FSL	1536 FEL	1616848.9	2398996.1	39.507683 -107.630254
10 WERNER 34D-23-692	841 FSL	1536 FEL	1616864.9	2398996.3	39.507726 -107.630255
11 WERNER 33A-23-692	857 FSL	1536 FEL	1616880.9	2398996.5	39.507770 -107.630256
12 WERNER 33C-23-692	873 FSL	1536 FEL	1616896.9	2398996.7	39.507814 -107.630256
13 WERNER 31D-26-692	543 FSL	1609 FEL	1616566.5	2398919.5	39.506908 -107.630502
14 WERNER 31C-26-692	544 FSL	1593 FEL	1616568.3	2398935.5	39.506908 -107.630446
15 WERNER 41D-26-692	544 FSL	1529 FEL	1616567.4	2398999.5	39.506910 -107.630219
16 WERNER 31B-26-692	544 FSL	1577 FEL	1616566.1	2398951.5	39.506909 -107.630389
17 WERNER 41C-26-692	544 FSL	1545 FEL	1616567.6	2398983.5	39.506910 -107.630276
18 WERNER 31A-26-692	544 FSL	1561 FEL	1616567.8	2398967.5	39.506909 -107.630332



ECLIPSE
surveying

111 E. THIRD ST., SUITE 208 RIFLE, CO 81650
(970) 625-3048

REV. DATE:	01/19/10
SCALE:	1" = 500'
DATE:	10/21/09
SHEET:	1 OF 1
PROJECT:	WERNER
DFT:	JAK

Bill Barrett Corporation

SW1/4SE1/4, SECTION 23
T. 6 S., R. 92 W. of the 6th P.M.
GARFIELD COUNTY, COLORADO