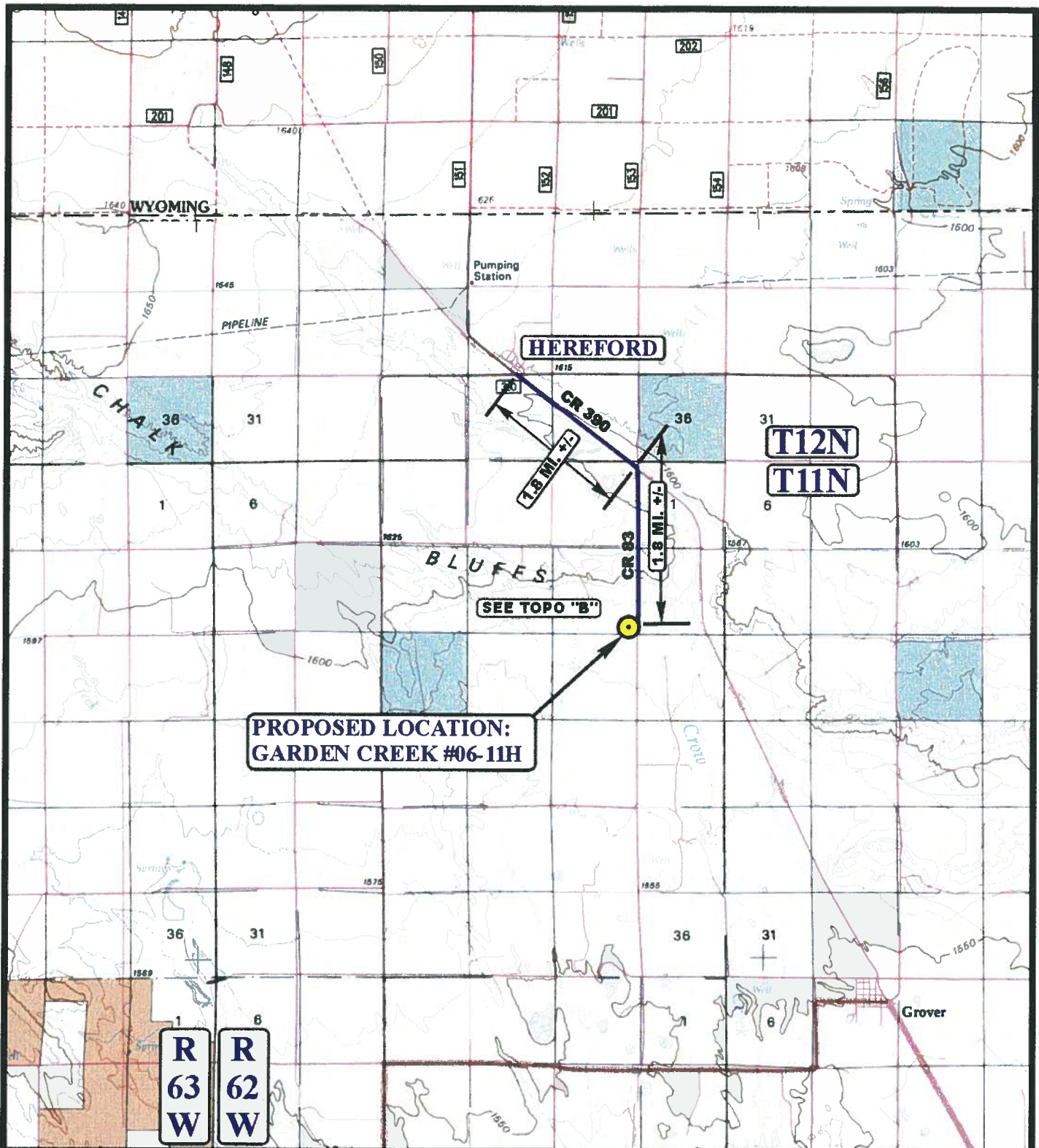


EOG RESOURCES, INC.
GARDEN CREEK #06-11H
SECTION 11, T11N, R62W, 6th P.M.

PROCEED IN A SOUTHEASTERLY DIRECTION FROM HEREFORD, COLORADO ON COUNTY ROAD 390 APPROXIMATELY 1.8 MILES TO THE JUNCTION OF COUNTY ROAD 390 AND COUNTY ROAD 83 TO THE SOUTH; TURN RIGHT AND PROCEED IN A SOUTHERLY DIRECTION APPROXIMATELY 1.8 MILES TO BEGINNING OF THE PROPOSED ACCESS ROAD TO THE WEST; FOLLOW ROAD FLAGS IN A WESTERLY DIRECTION APPROXIMATELY 280' TO THE PROPOSED LOCATION.

TOTAL DISTANCE FROM HEREFORD, COLORADO TO THE PROPOSED LOCATION IS APPROXIMATELY 3.6 MILES.



LEGEND:

● PROPOSED LOCATION



EOG RESOURCES, INC.

GARDEN CREEK #06-11H
SECTION 11, T11N, R62W, 6th P.M.
501' FSL 501' FEL



Uintah Engineering & Land Surveying
85 South 200 East Vernal, Utah 84078
(435) 789-1017 * FAX (435) 789-1813

ACCESS ROAD
MAP

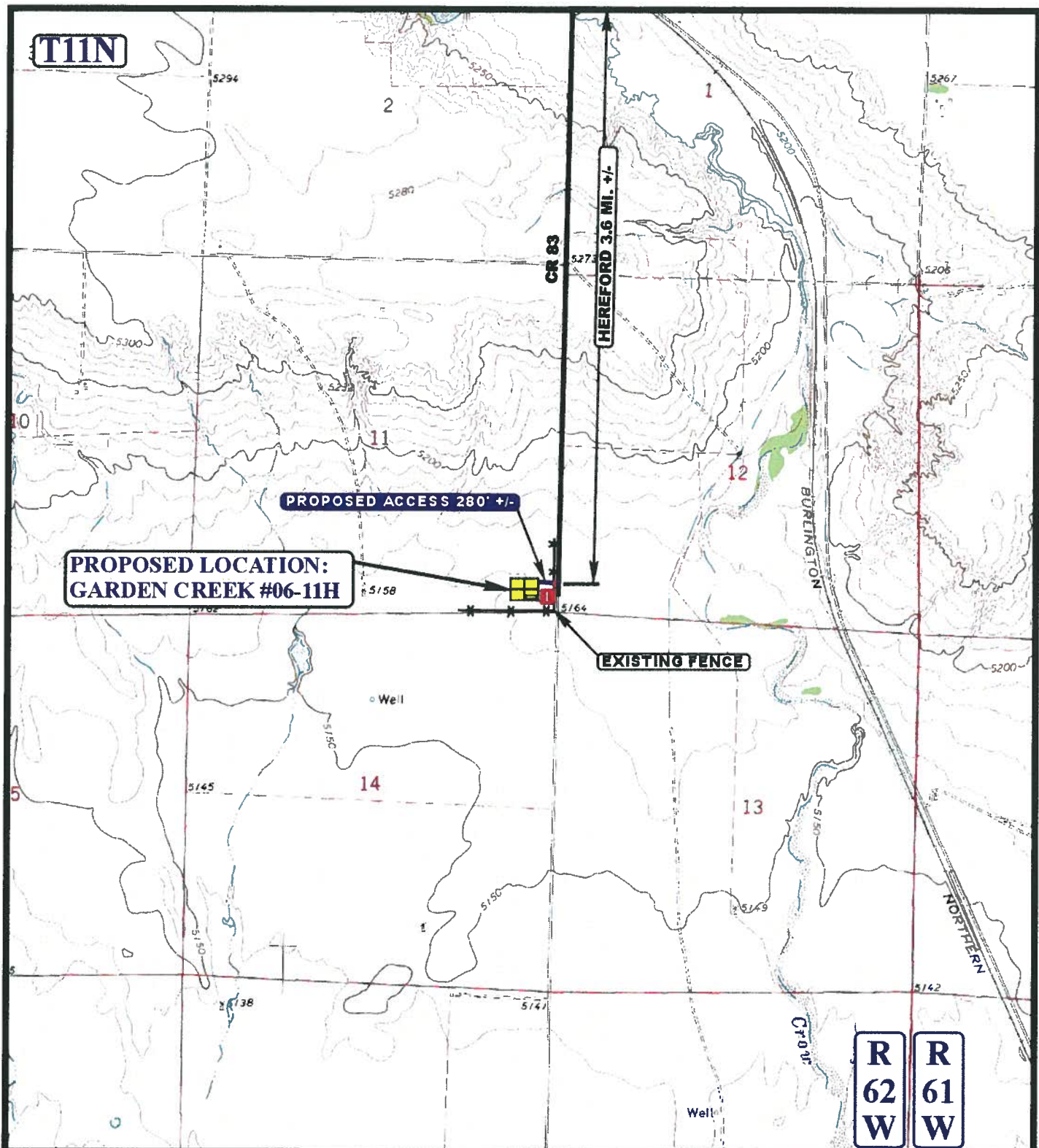
01 05 10
MONTH DAY YEAR

SCALE: 1:100,000

DRAWN BY: J.H.

REVISED: 00-00-00





LEGEND:

- EXISTING ROAD
- PROPOSED ACCESS ROAD
- EXISTING FENCE
- INSTALL CATTLE GUARD



EOG RESOURCES, INC.

GARDEN CREEK #06-11H
SECTION 11, T11N, R62W, 6th P.M.
501' FSL 501' FEL



Utah Engineering & Land Surveying
 85 South 200 East Vernal, Utah 84078
 (435) 789-1017 * FAX (435) 789-1813

**ACCESS ROAD
MAP**

01 05 10
 MONTH DAY YEAR

SCALE: 1" = 2000' DRAWN BY: J.H. REVISED: 00-00-00

B
 TOPO