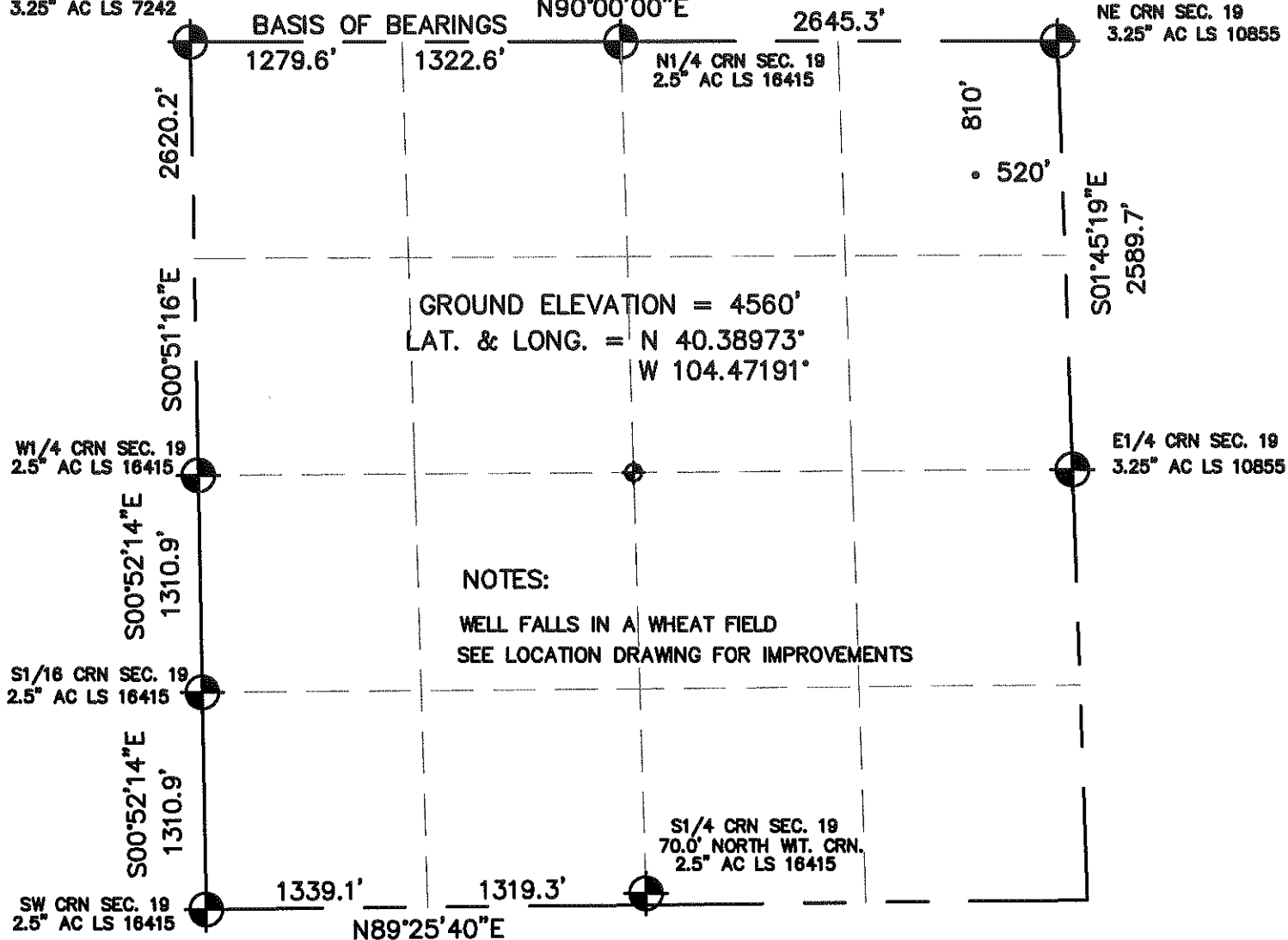


WELL LOCATION CERTIFICATE

NW CRN SEC. 19
3.25" AC LS 7242

SECTION 19, TOWNSHIP 5 NORTH, RANGE 63 WEST, 6TH P.M.

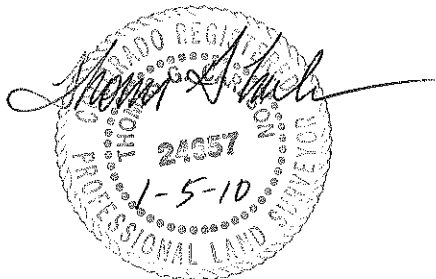
NE CRN SEC. 19
3.25" AC LS 10855



NOTES:

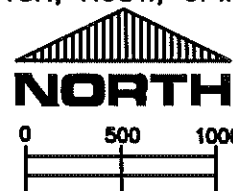
WELL FALLS IN A WHEAT FIELD
SEE LOCATION DRAWING FOR IMPROVEMENTS

I HEREBY STATE TO PETROLEUM DEV. CORP. THAT THIS WELL LOCATION CERTIFICATE FOR THE WELL COCKROFT 41-19 IS LOCATED 810' FNL & 520' FEL, SEC. 19, T5N, R63W, 6PM.



LEGEND

- = FOUND MONUMENT
- = PROPOSED WELL



SCALE 1" = 1000'

ELEVATION SOURCE = USGS 7.5' QUAD.MAP CONTOURS
NGVD 1929 DATUM.

LAT. & LONG. ARE DIFFERENTIALLY CORRECTED (NAD'83)
USING (DGPS) WITH (PDOP) VALUES LESS THAN SIX (6).

THOMAS G. CARLSON, PLS 24657
HORSESHOE SURVEYING, LLC

SHOWN DISTANCES ARE FIELD MEASURED - EXTERIOR SECTION LINES
ARE DRAWN TO SCALE (BEST APPROX. OR FOUND MONUMENT).

THIS IS NOT A MONUMENTED BOUNDARY SURVEY, IT IS ONLY A
DRAWING INTENDED TO DEPICT THE WELL LOCATION TO SECTION LINES.

DISTANCES TO WELL SHOWN PERPENDICULAR
TO SECTION LINES.

PREPARED BY: HORSESHOE SURVEYING, LLC PO BOX 150458 LAKEWOOD, CO 80215 (720)872-0196		WELL NAME: COCKROFT 41-19	
DRAWING DATE: 1-05-10		LOCATION: WELD COUNTY, CO NENE, SEC. 19, T5N, R63W, 6TH P.M.	
FIELD DATE: 1-05-10	BY: TGC	CHKD:	JOB NO. SHEET NO. 1 OF 1