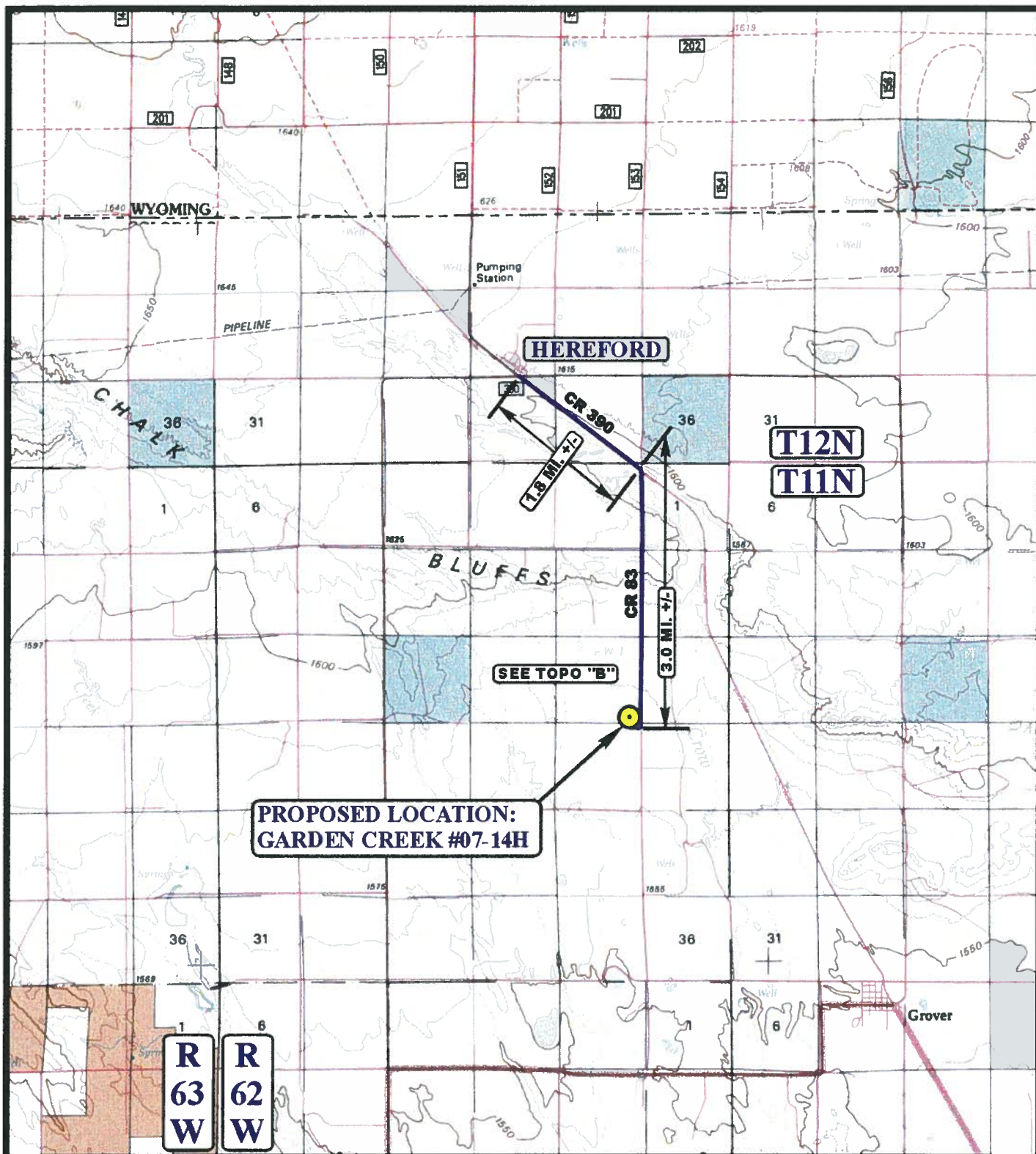


EOG RESOURCES, INC.
GARDEN CREEK #07-14H
SECTION 14, T11N, R62W, 6th P.M.

PROCEED IN A SOUTHEASTERLY DIRECTION FROM HEREFORD, COLORADO ON COUNTY ROAD 390 APPROXIMATELY 1.8 MILES TO THE JUNCTION OF COUNTY ROAD 390 AND COUNTY ROAD 83 TO THE SOUTH; TURN RIGHT AND PROCEED IN A SOUTHERLY DIRECTION APPROXIMATELY 3.0 MILES TO THE JUNCTION OF COUNTY ROAD 83 AND THE PROPOSED ROAD FOR THE GARDEN CREEK #08-15H TO THE WEST; FOLLOW ROAD FLAGS IN A WESTERLY DIRECTION APPROXIMATELY 0.1 MILES TO BEGINNING OF THE PROPOSED ACCESS ROAD TO THE NORTH; FOLLOW ROAD FLAGS IN A NORTHERLY DIRECTION APPROXIMATELY 380' TO THE PROPOSED LOCATION.

TOTAL DISTANCE FROM HEREFORD, COLORADO TO THE PROPOSED LOCATION IS APPROXIMATELY 5.0 MILES.



LEGEND:

PROPOSED LOCATION



EOG RESOURCES, INC.

GARDEN CREEK #07-14H
SECTION 14, T11N, R62W, 6th P.M.
501' FSL 600' FEL



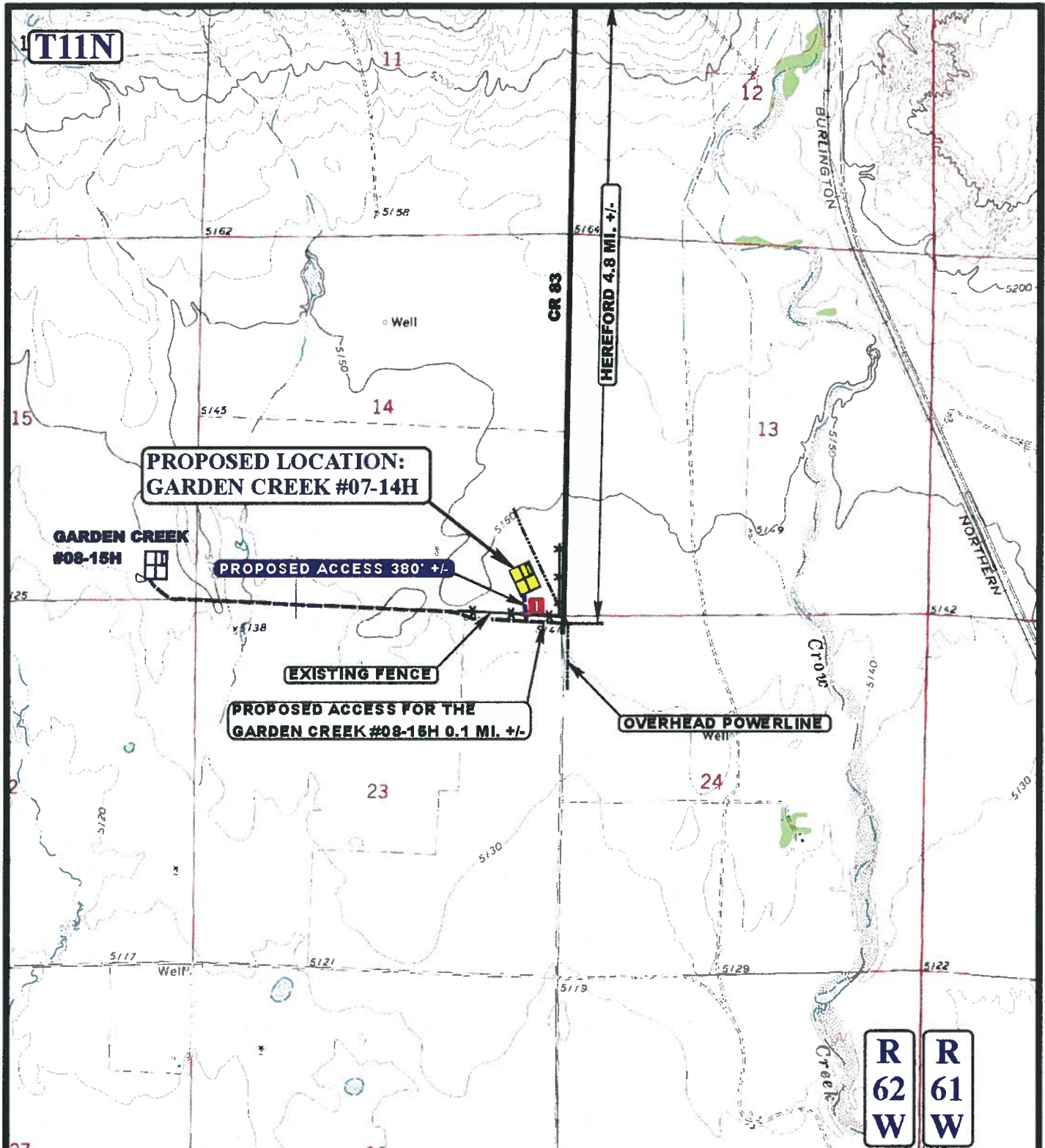
Utah Engineering & Land Surveying
 85 South 200 East Vernal, Utah 84078
 (435) 789-1017 * FAX (435) 789-1813

ACCESS ROAD
MAP

01 **06** **10**
 MONTH DAY YEAR



SCALE: 1:100,000 DRAWN BY: J.H. REVISED: 00-00-00



LEGEND:

- EXISTING ROAD
- - - - - PROPOSED ACCESS ROAD
- * * * * * EXISTING FENCE
- - - - - OVERHEAD POWERLINE
- INSTALL CATTLE GUARD



EOG RESOURCES, INC.

GARDEN CREEK #07-14H
SECTION 14, T11N, R62W, 6th P.M.
501' FSL 600' FEL



Uintah Engineering & Land Surveying
85 South 200 East Vernal, Utah 84078
(435) 789-1017 * FAX (435) 789-1813

ACCESS ROAD
MAP

01 06 10
MONTH DAY YEAR

B
TOPO

SCALE: 1" = 2000' DRAWN BY: J.H. REVISED: 00-00-00