

T11N, R63W, 6th P.M.

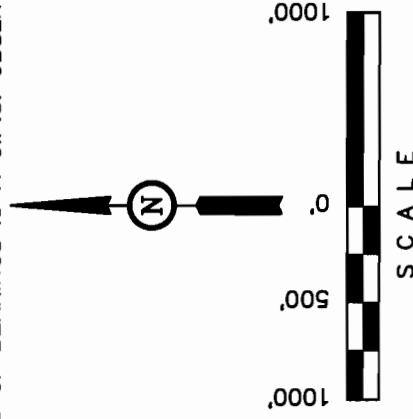
Well location, CRITTER CREEK #05-10H, located as shown in the SE 1/4 SE 1/4 of Section 10, T11N, R63W, 6th P.M. Weld County, Colorado.

BASIS OF ELEVATION

SPOT ELEVATION AT THE NORTHEAST CORNER OF SECTION 1, T11N, R63W, 6th P.M. TAKEN FROM THE HEREFORD, QUADRANGLE, COLORADO, WELD COUNTY, 7.5 MINUTE QUAD (TOPOGRAPHIC MAP) PUBLISHED BY THE UNITED STATES DEPARTMENT OF THE INTERIOR, GEOLOGICAL SURVEY. SAID ELEVATION IS MARKED AS BEING 5352 FEET.

BASIS OF BEARINGS

BASIS OF BEARINGS IS A G.P.S. OBSERVATION.



CERTIFICATE

THIS IS TO CERTIFY THAT THE ABOVE PART WAS PREPARED FROM FIELD NOTES OF ACTUAL SURVEYS MADE BY ME OR UNDER MY SUPERVISION AND THAT THE SAME ARE TRUE AND CORRECT TO THE BEST OF MY KNOWLEDGE AND BELIEF.

Set UELS Alum. Cap
Lat: 40.929681°
Long: 104.409519°

UTAH
ENGINEERING & LAND SURVEYING

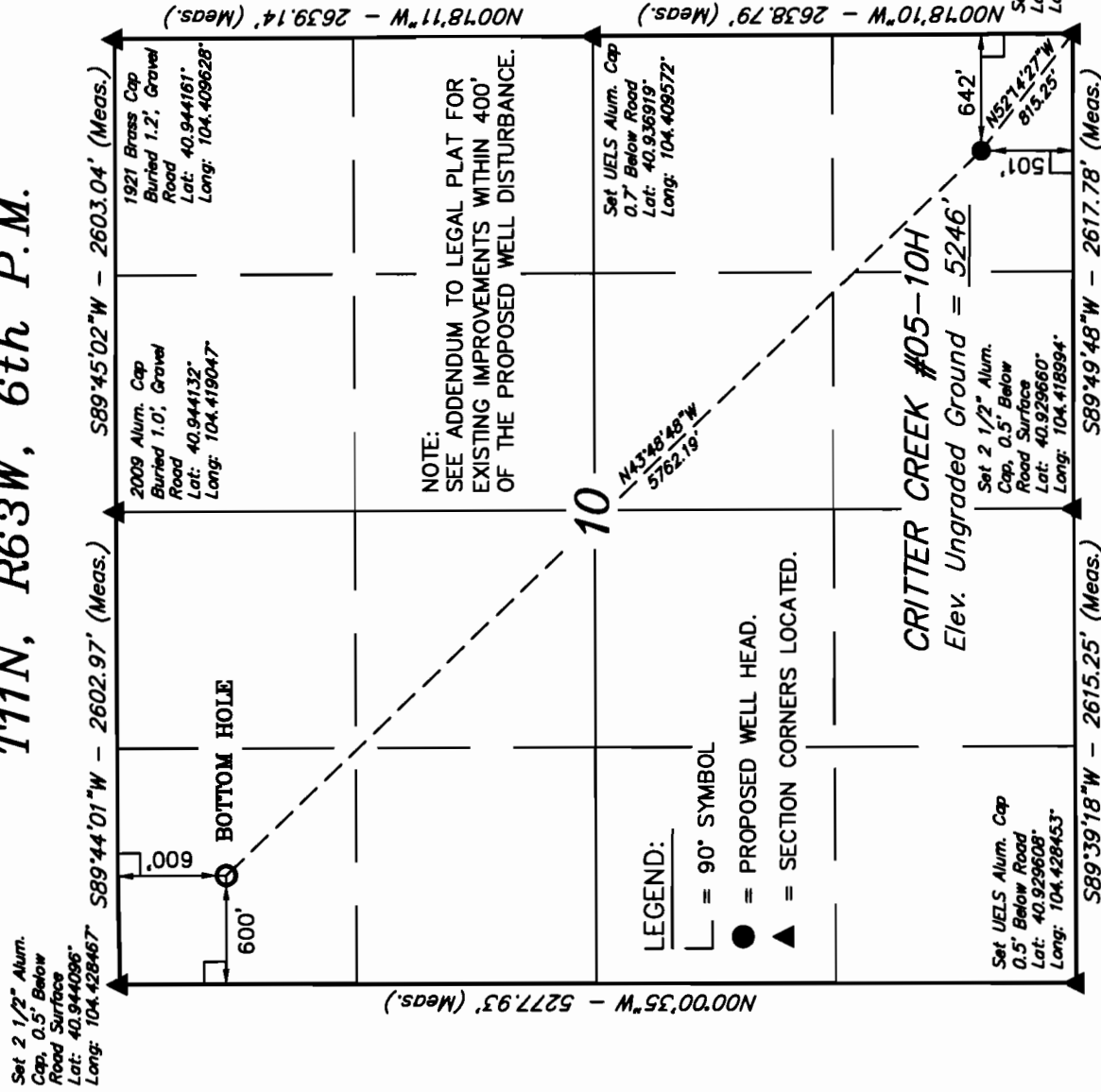
85 SOUTH 200 EAST - VERNAL, UTAH 84078
(435) 789-1017

SCALE	1" = 1000'	DATE SURVEYED:	DATE DRAWN:
		12-01-09	12-07-09

PARTY	REFERENCES
A.F.	J.R. D.R.B. G.I.O. PLAT

WEATHER		
FILE		

EOG RESOURCES, INC.



NAD 83 (TARGET BOTTOM HOLE):		NAD 83 (SURFACE LOCATION):	
LATITUDE = 40°56'32.85" (40.942458)		LATITUDE = 40°55'51.79" (40.931053)	
LONGITUDE = 104°25'34.66" (104.426294)		LONGITUDE = 104°24'42.68" (104.411856)	
NAD 27 (TARGET BOTTOM HOLE):		NAD 27 (SURFACE LOCATION):	
LATITUDE = 40°56'32.91" (40.942475)		LATITUDE = 40°55'51.85" (40.931089)	
LONGITUDE = 104°25'32.82" (104.425783)		LONGITUDE = 104°24'40.84" (104.411344)	
STATE PLANE NAD 83 (COLORADO NORTH):		STATE PLANE NAD 83 (COLORADO NORTH):	
TARGET BOTTOM HOLE:		SURFACE LOCATION:	
N: 1587986.809 E: 3296637.898		N: 1583879.999 E: 3300877.931	
STATE PLANE NAD 27 (COLORADO NORTH):		STATE PLANE NAD 27 (COLORADO NORTH):	
TARGET BOTTOM HOLE:		SURFACE LOCATION:	
N: 587984.637 E: 2296787.359		N: 583877.894 E: 2300827.346	