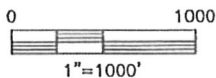
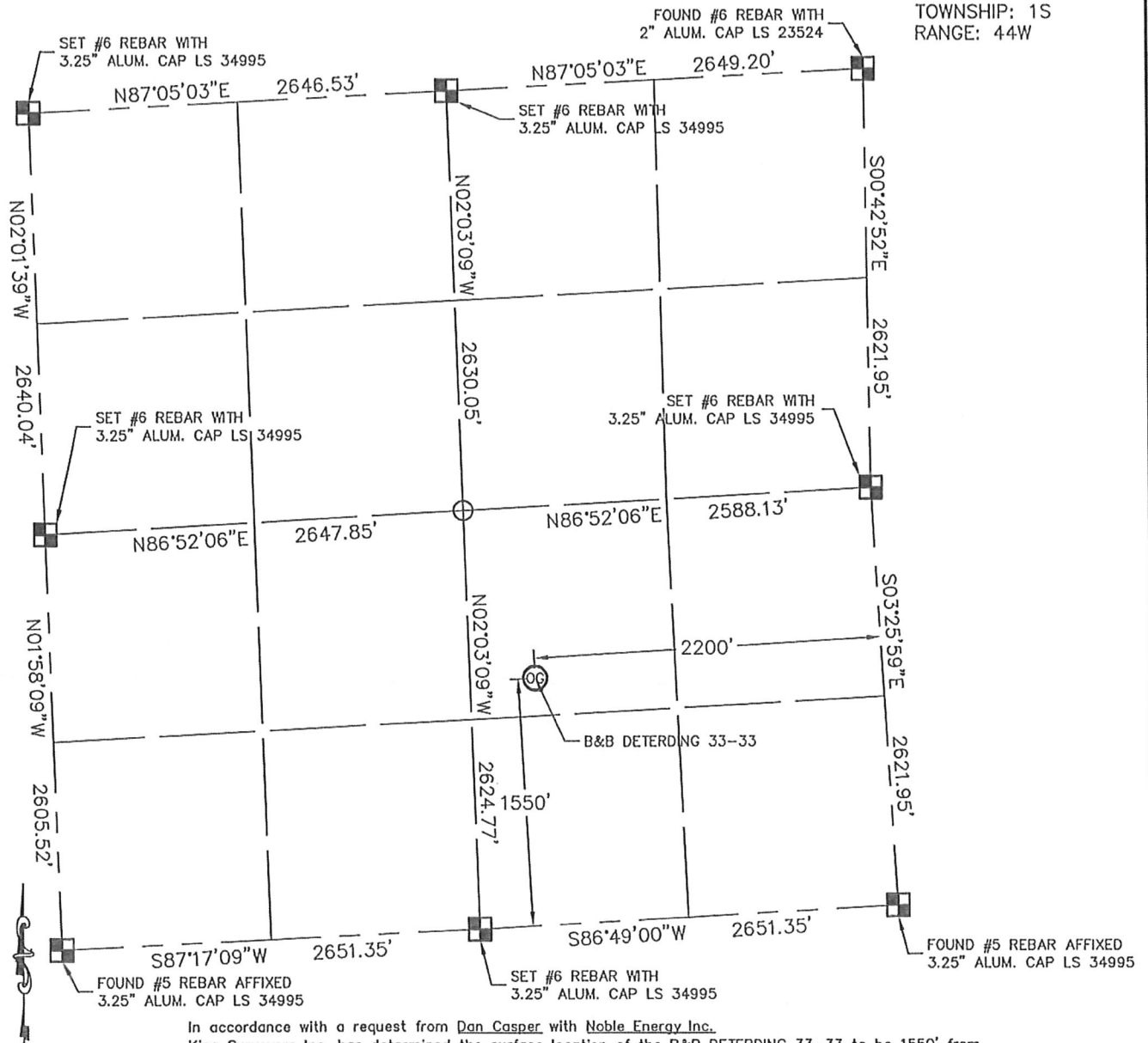


## WELL LOCATION CERTIFICATE

THIS MAP DOES NOT REPRESENT A BOUNDARY SURVEY

SECTION: 33  
TOWNSHIP: 1S  
RANGE: 44WIn accordance with a request from Dan Casper with Noble Energy Inc.King Surveyors Inc. has determined the surface location of the B&B DETERDNG 33-33 to be 1550' from the SOUTH line and 2200' from the EAST line as measured at right angles from the section line of Section 33, Township 1 South, Range 44 West of the Sixth Principal Meridian, County of Yuma, State of Colorado.

I hereby state that this Well Location Certificate was prepared by me, or under my direct supervision, that the fieldwork was completed on 12-07-09, for and on behalf of Noble Energy Inc. That this is not a Land Survey Plat or an Improvement Survey Plat, and that it is not to be relied upon for establishment of fence, building, or other future improvement lines.

## NOTE:

- 1) Bearings shown are Grid Bearings of the Colorado State Plane Coordinate System, North Zone, North American Datum 1983/2007. The lineal dimensions as contained herein are based upon the "U.S. Survey Foot."
- 2) Ground elevations are based on an observed GPS elevation (NAVD 1988 DATUM).
- 3) IMPROVEMENTS: See LOCATION DRAWING exhibit for all visible improvements within 400' of well head.
- 4) SURFACE USE: DRYLAND-PASTURE



## SURFACE LOCATION

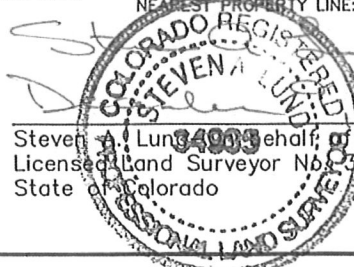
LATITUDE: 39.92372N  
LONGITUDE: 102.30586W  
PDOP: 1.8  
ELEV: 3891'  
1/4, 1/4: NW1/4SE1/4  
NEAREST PROPERTY LINE: 414' WEST

## NOTE

According to Colorado law, you must commence any legal action based upon any defect in this W.L.C. within three years after you discover such defect. In no event, may any action based upon any defect in this survey be commenced more than ten years after the date of the certificate shown hereon. (13-80-105 C.R.S.)

## LEGEND

-  = ALIQUOT MONUMENT AS DESCRIBED  
 = CALCULATED POSITION



Steven A. Lund 34995, on behalf of King Surveyors, Inc.  
Licensed Land Surveyor No. 34995  
State of Colorado

PROJECT#: 2009255