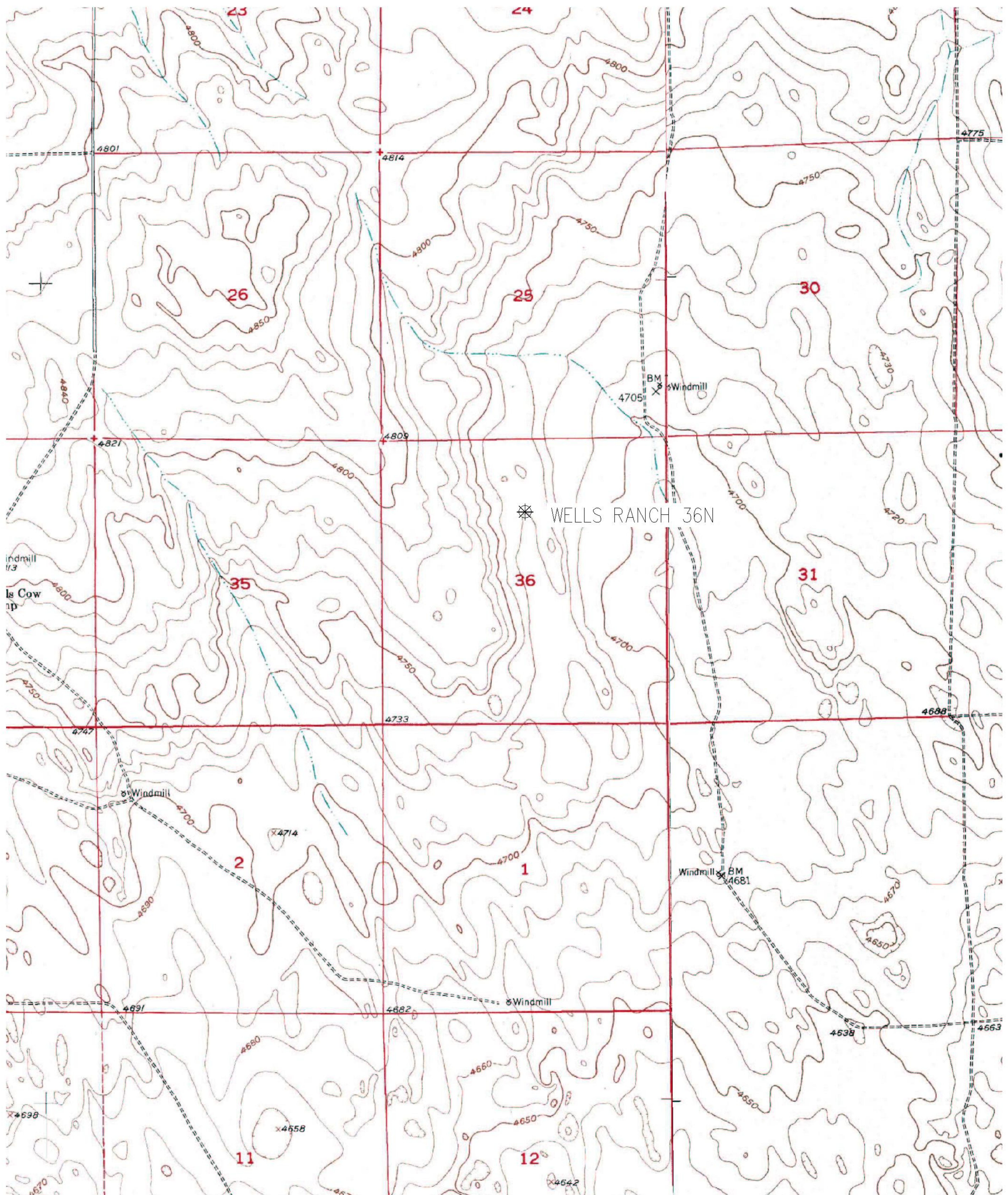
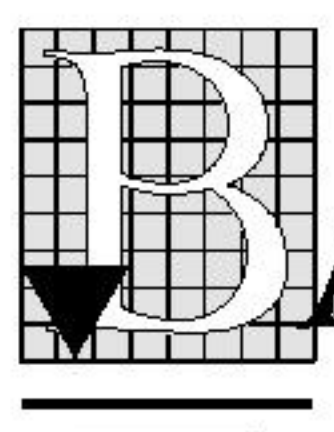
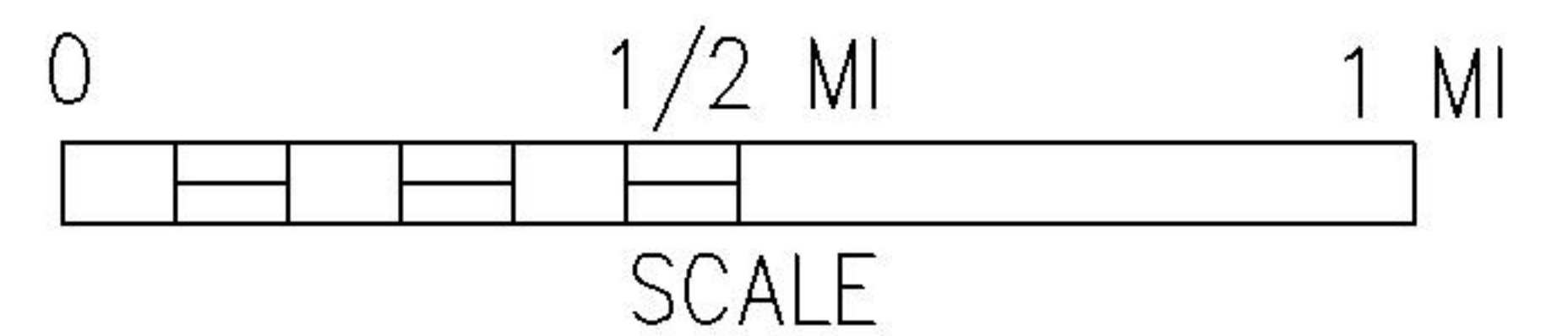


WELL LOCATION ON USGS QUAD



LEGEND

- ✱ PROPOSED WELL (SURFACE UNLESS NOTED)
- ➡ PROPOSED ACCESS LOCATION



BASELINE
engineering corporation

920 9TH AVENUE
GREELEY, CO. 80631
PH (970) 353-7600
FAX (970) 353-7601

SURFACE LOCATION: SWNE SECTION 36, T6N, R63W, 6TH P.M. WELD COUNTY, CO

DATE: 6/19/2008

FIELD DATE: 6-18-2008

WELL NAME: WELLS RANCH 36N

SHEET #: TOPO