

Steil Surveying Services, LLC

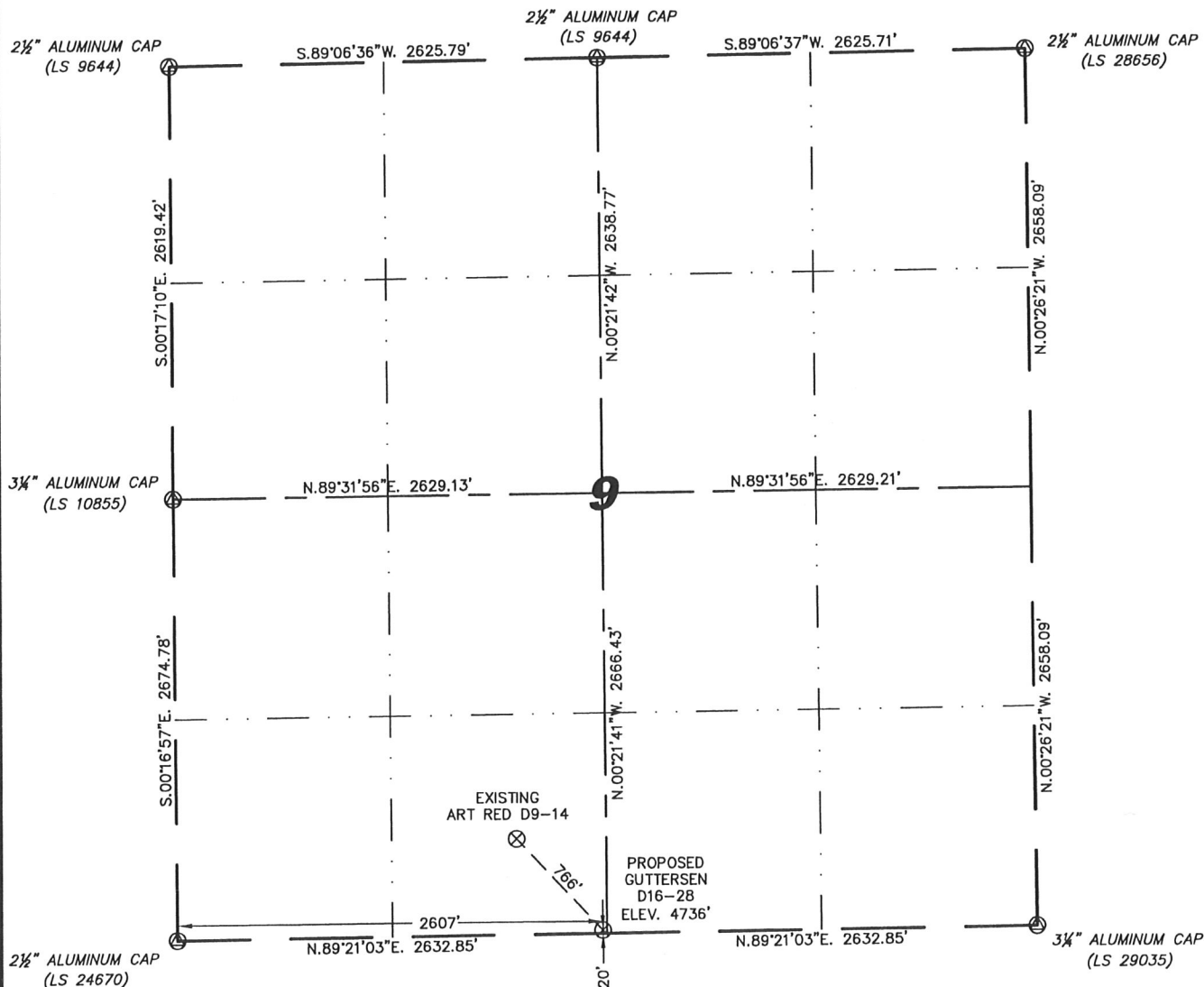
1102 West 19th Street P.O. BOX 2073

Cheyenne, Wyoming 82009

WELL LOCATION CERTIFICATE

THIS MAP DOES NOT REPRESENT A BOUNDARY SURVEY

SECTION 9
TOWNSHIP 3 NORTH
RANGE 64 WEST



0 1000

Scale: 1" = 1000'

IN ACCORDANCE WITH A REQUEST FROM ERIK VAN DECAR - NOBLE ENERGY INC, STEIL SURVEYING SERVICES, LLC HAS DETERMINED THE LOCATION OF THE GUTTERSEN D16-28 WELL TO BE 20' FSL, 2807' FWL, AS MEASURED AT NINETY (90) DEGREES FROM THE SECTION LINES, SECTION 9, TOWNSHIP 3 NORTH, RANGE 64 WEST, 6TH PRINCIPLE MERIDIAN, WELD COUNTY, COLORADO.

I HEREBY CERTIFY THAT THIS WELL LOCATION CERTIFICATE WAS PREPARED BY ME, OR UNDER MY DIRECT SUPERVISION, THAT THE FIELD WORK WAS COMPLETED ON 08/27/2009, FOR AND ON BEHALF OF NOBLE ENERGY INC, THAT IT IS NOT A LAND SURVEY PLAT OR AN IMPROVEMENT SURVEY PLAT, AND THAT IT IS NOT TO BE RELIED UPON FOR ESTABLISHMENT OF FENCE, BUILDING, OR OTHER FUTURE IMPROVEMENT LINES.

NOTES:

- 1) BASIS OF BEARINGS FOR THIS MAP ARE BASED UPON GPS OBSERVATIONS MADE ON 04/29/2009 BETWEEN MONUMENTS LOCATED AT THE SOUTHEAST SECTION CORNER AND THE NORTHEAST SECTION CORNER OF SAID SECTION AND WITH ALL BEARINGS SHOWN HEREON RELATIVE THERETO.
- 2) ELEVATIONS ARE BASED UPON NGS OPUS SOLUTION NAVD 88 DATUM.
- 3) THE NEAREST EXISTING WELL IS: ART RED D9-14, 766' NORTHWEST.
- 4) SEE VISIBLE IMPROVEMENTS EXHIBIT FOR ALL IMPROVEMENTS WITHIN 400'.
- 5) THE LOCATION FALLS IN PASTURE LAND.

LATITUDE & LONGITUDE (NAD 83 SURFACE HOLE):

LATITUDE: N 40.23274°

LONGITUDE: W 104.55622°

PDOP: 2.0

QUARTER-QUARTER: SE/4SW/4

NEAREST PROPERTY LINE: 20' TO THE SOUTH

LEGEND

⊙ FOUND SURVEY MONUMENT PER
MONUMENT RECORD - EXCEPTIONS NOTED.

(C) CALCULATED DIMENSION



Completed 08/28/2009

David C. Holmes
Professional Land Surveyor Registration No. 32828
State of Colorado

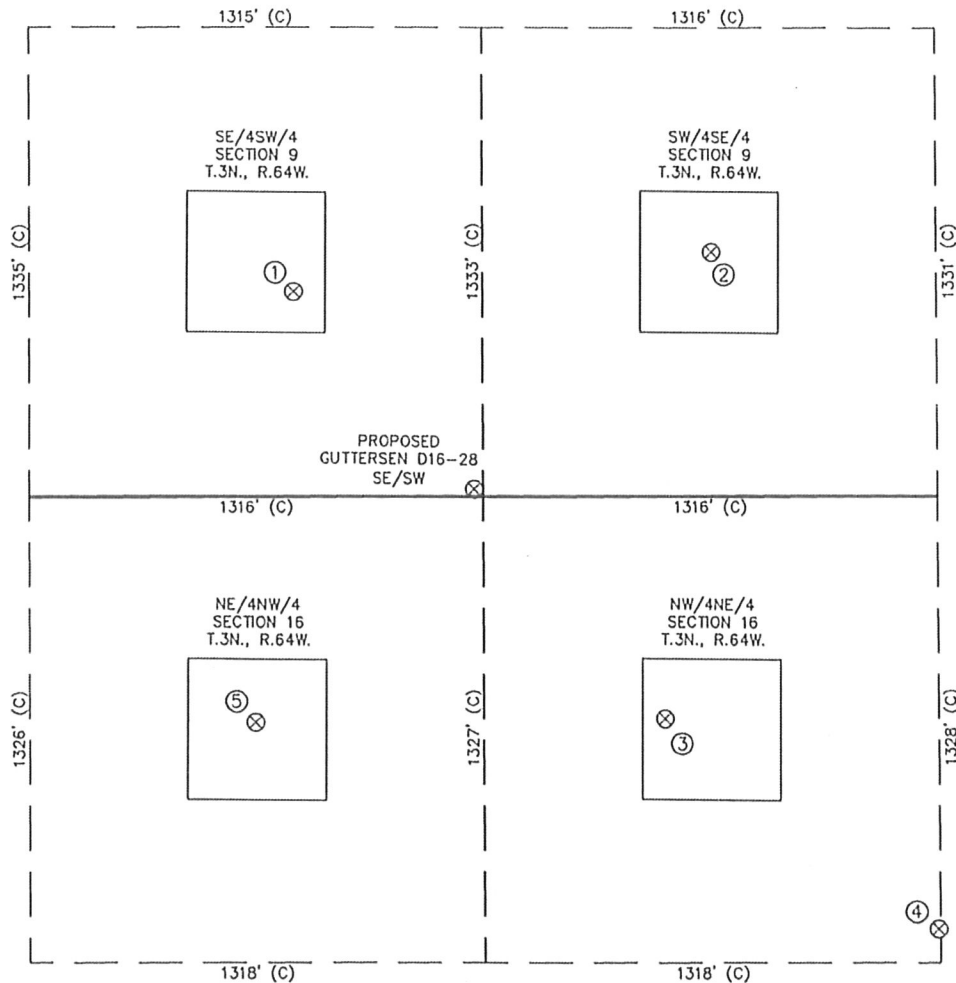
JOB #: 09086

NOTICE: According to Colorado law you MUST commence any legal action based upon any defect in this W.L.C. within three years after you first discover such defect. In no event may any action based upon any defect in this W.L.C. be commenced more than ten years from this sold date of the certification shown hereon.

Permit Zones: J/C/N
 Surface Csg: 600' (252 sks)
 TD/MD: 7590' (710 sks)

SITE SKETCH – GUTTERSEN D16-28

SECTION 9
 TOWNSHIP 3 NORTH
 RANGE 64 WEST



①	②	③	④	⑤
ART RED D9-14 SE/SW SEC. 9 582' FSL 2083' FWL EL 4742' N 40.23428 W 104.55808 PDOP 2.3	GUTTERSEN UPRC D9-15 SW/SE SEC. 9 694' FSL 1967' FEL EL 4730' N 40.23459 W 104.55373 PDOP 2.1	SPIKE STATE D16-2 NW/NE SEC. 16 634' FNL 2111' FEL EL 4759' N 40.23095 W 104.55426 PDOP 2.1	SPIKE STATE D16-7J NW/NE SEC. 16 1233' FNL 1325' FEL EL 4766' N 40.22931 W 104.55145 PDOP 1.8	SPIKE STATE D16-3 NE/NW SEC. 16 644' FNL 1972' FWL EL 4748' N 40.23092 W 104.55850 PDOP 2.3

- NOTES:
- THIS SKETCH DOES NOT REPRESENT A BOUNDARY SURVEY.
 - THE DATUM FOR THE LATITUDES AND LONGITUDES ON THIS SKETCH IS NAD83.

