

EOG RESOURCES, INC.

T111N, R62W, 6th P.M.

Well location, GARDEN CREEK #09-16H, located as shown in the SE 1/4 SE 1/4 of Section 16, T11N, R62W, 6th P.M., Weld County, Colorado.

BASIS OF ELEVATION

SPOT ELEVATION AT THE NORTHEAST CORNER OF SECTION 1, T11N, R63W, 6th P.M. TAKEN FROM THE HEREFORD, QUADRANGLE, COLORADO, WELD COUNTY, 7.5 MINUTE QUAD (TOPOGRAPHIC MAP) PUBLISHED BY THE UNITED STATES DEPARTMENT OF THE INTERIOR, GEOLOGICAL SURVEY. SAID ELEVATION IS MARKED AS BEING 5352 FEET.

BASIS OF BEARINGS

BASIS OF BEARINGS IS A G.P.S. OBSERVATION.

NOTE:
SEE ADDENDUM TO LEGAL PLAT FOR
EXISTING IMPROVEMENTS WITHIN 400'
OF THE PROPOSED WELL DISTURBANCE.



SCALE

CERTIFICATE

THIS IS TO CERTIFY THAT THE ABOVE PLAT WAS PREPARED FROM FIELD NOTES OF ACTUAL SURVEYS MADE BY ME OR UNDER MY SUPERVISION AND THAT THE SAME ARE TRUE AND CORRECT TO THE BEST OF MY KNOWLEDGE AND BELIEF.

REGISTERED LAND SURVEYOR
REGISTRATION NO. 17492
STATE OF COLORADO

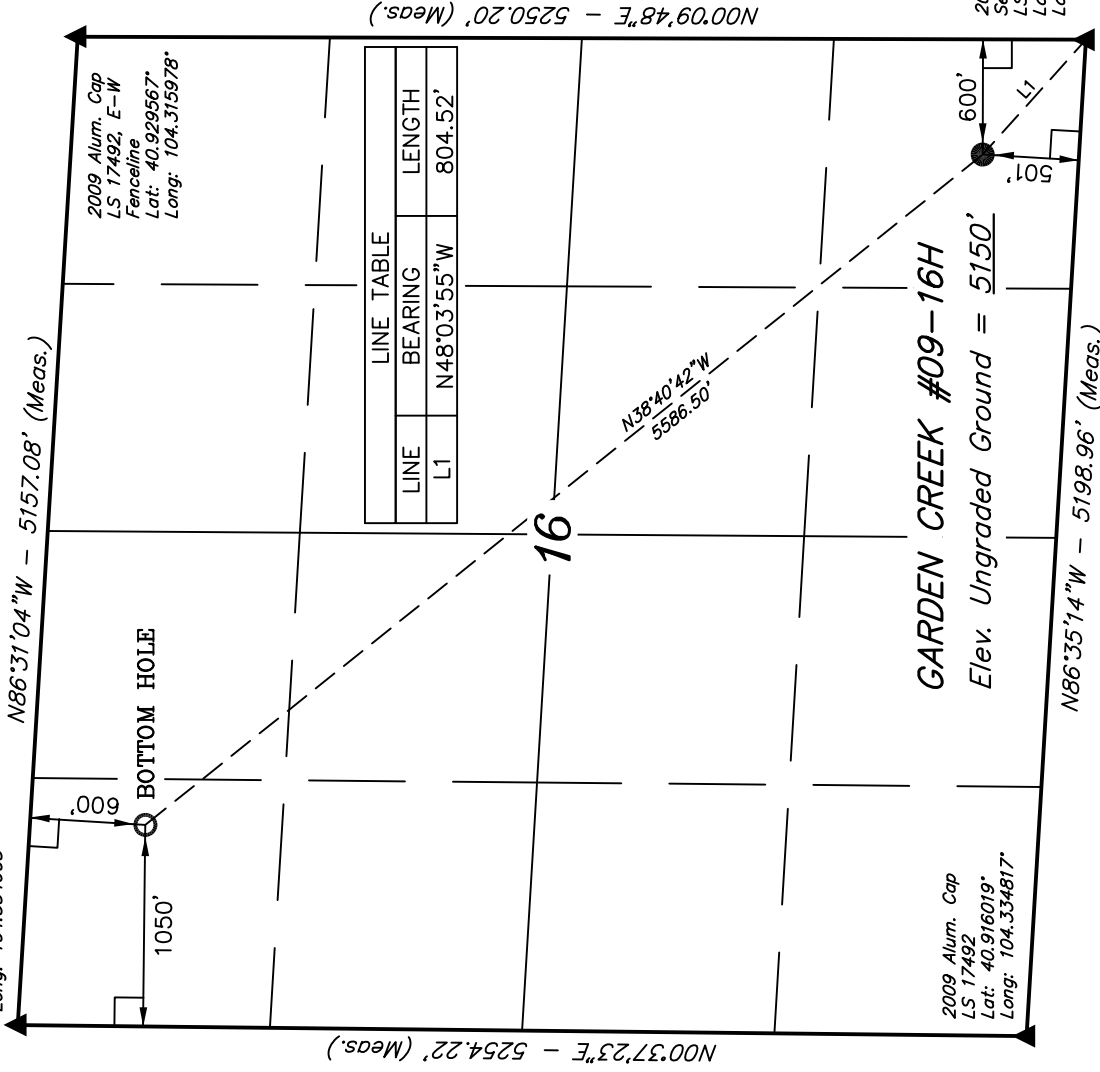
UNTAH ENGINEERING & LAND SURVEYING

85 SOUTH 200 EAST - VERNAL, UTAH 84078
(435) 789-1017

SCALE 1" = 1000' DATE SURVEYED: 12-21-09 DATE DRAWN: 01-04-10

PARTY B.H. C.K. D.R.B. REFERENCES G.L.O. PLAT

WEATHER COLD FILE EOG RESOURCES, INC.



LINE TABLE		
LINE	BEARING	LENGTH
L1	N48°03'55"W	804.52'

LEGEND:	
<div></div>	= 90° SYMBOL
<div></div>	= PROPOSED WELL HEAD.
<div></div>	= SECTION CORNERS LOCATED.
PDOP = 1.5	
NAD 83 (TARGET BOTTOM HOLE)	
LATITUDE = 40°55'43.00" (40.928611)	
LONGITUDE = 104°19'50.99" (104.330831)	
NAD 27 (TARGET BOTTOM HOLE)	
LATITUDE = 40°55'43.06" (40.928628)	
LONGITUDE = 104°19'49.16" (104.330322)	
STATE PLANE NAD 83 (COLORADO NORTH)	
TARGET BOTTOM HOLE:	
N: 1583275.154	E: 3323077.325
STATE PLANE NAD 27 (COLORADO NORTH)	
TARGET BOTTOM HOLE:	
N: 583272.991	E: 2323226.610
NAD 83 (SURFACE LOCATION)	
LATITUDE = 40°54'59.90" (40.916639)	
LONGITUDE = 104°19'05.55" (104.318208)	
NAD 27 (SURFACE LOCATION)	
LATITUDE = 40°54'59.96" (40.916656)	
LONGITUDE = 104°19'03.72" (104.317700)	
STATE PLANE NAD 83 (COLORADO NORTH)	
SURFACE LOCATION:	
N: 1578959.628	E: 3326622.865
STATE PLANE NAD 27 (COLORADO NORTH)	
SURFACE LOCATION:	
N: 578957.531	E: 2326772.099