

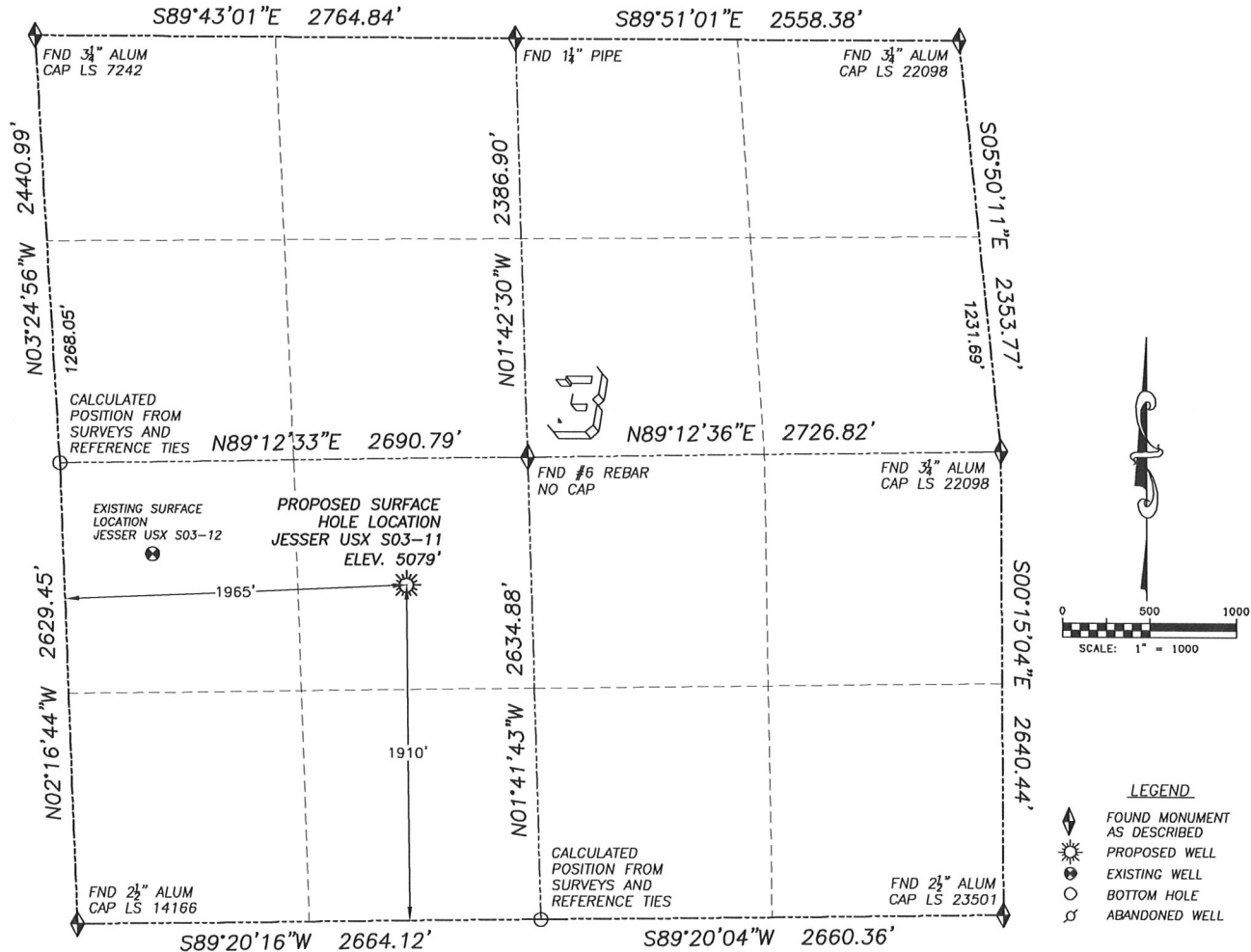
DALEY LAND SURVEYING, INC.

PARKER, CO. 80134

303 953 9841

WELL LOCATION CERTIFICATE JESSER USX S03-11

SECTION 3, TOWNSHIP 4 NORTH, RANGE 68 WEST OF THE 6TH PRINCIPAL MERIDIAN



NAD 83 LATITUDE AND LONGITUDE

JESSER USX S03-11 SURFACE HOLE:

LATITUDE: N40.34064°
LONGITUDE: W104.99210°
ELEVATION: 5079'
PDOP: 2.1
1910' FSL, 1965' FWL

NEAREST EXISTING WELL:

JESSER USX S03-12
LATITUDE: N40.34113°
LONGITUDE: W104.99733°
ELEVATION: 5117'
1468' WEST

QUARTER/QUARTER: NE4/SW4

NEAREST APPARENT PROPERTY LINE:
718'± EAST

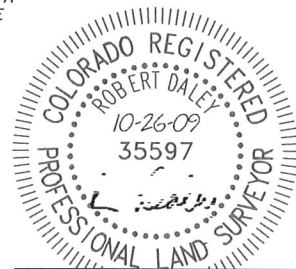
IN ACCORDANCE WITH A REQUEST FROM JOE JOHNSON OF NOBLE ENERGY INC., DALEY LAND SURVEYING, INC. HAS DETERMINED THE SURFACE LOCATION OF THE JESSER USX S03-11 WELL TO BE 1910' FSL, 1965' FWL, AS MEASURED AT NINETY (90) DEGREES FROM THE SECTION LINES OF SECTION 3, TOWNSHIP 4 NORTH, RANGE 68 WEST OF THE 6TH PRINCIPAL MERIDIAN, WELD COUNTY COLORADO.

I HEREBY CERTIFY THAT THIS WELL LOCATION CERTIFICATE WAS PREPARED BY ME OR UNDER MY DIRECT SUPERVISION, THAT THE WORK WAS COMPLETED ON 10/22/2009 FOR AND ON BEHALF OF NOBLE ENERGY, INC., AND THAT THIS MAP DOES NOT REPRESENT A BOUNDARY SURVEY, IT IS NOT A LAND SURVEY PLAT OR AN IMPROVEMENT SURVEY PLAT AND IT IS NOT TO BE RELIED UPON FOR THE ESTABLISHMENT OF FENCE, BUILDING OR OTHER FUTURE IMPROVEMENT LINES.

NOTES:

- 1) BASIS OF BEARING FOR THIS MAP IS ASSUMED AND BASED UPON GPS OBSERVATIONS MADE BETWEEN MONUMENTS LOCATED AT THE NORTHWEST AND NORTH QUARTER CORNER OF SECTION 3, T.4N., R.68W., AND ALL BEARINGS SHOWN HEREON ARE RELATIVE THERETO.
- 2) HORIZONTAL DATUM IS NAD83.
- 3) VERTICAL DATUM IS NAVD83. ELEVATIONS ARE DERIVED FROM GPS-RTK OBSERVATIONS PROCESSED THROUGH OPUS, UTILIZING THE GEOD03 MODEL.
- 4) SEE VISIBLE IMPROVEMENTS EXHIBIT FOR VISIBLE IMPROVEMENTS WITHIN 400' OF PROPOSED SURFACE HOLE LOCATION
- 5) SURFACE USE: CULTIVATED FIELD

NOTICE: According to Colorado law you MUST commence any legal action based upon any defect in this W.L.C. within three years after you first discover such defect. In no event may any action based upon any such defect in this W.L.C. be commenced more than ten years from the date of the certification shown hereon.



FOR AND ON BEHALF OF
DALEY LAND SURVEYING INC.,
Robert Daley, PLS 35597

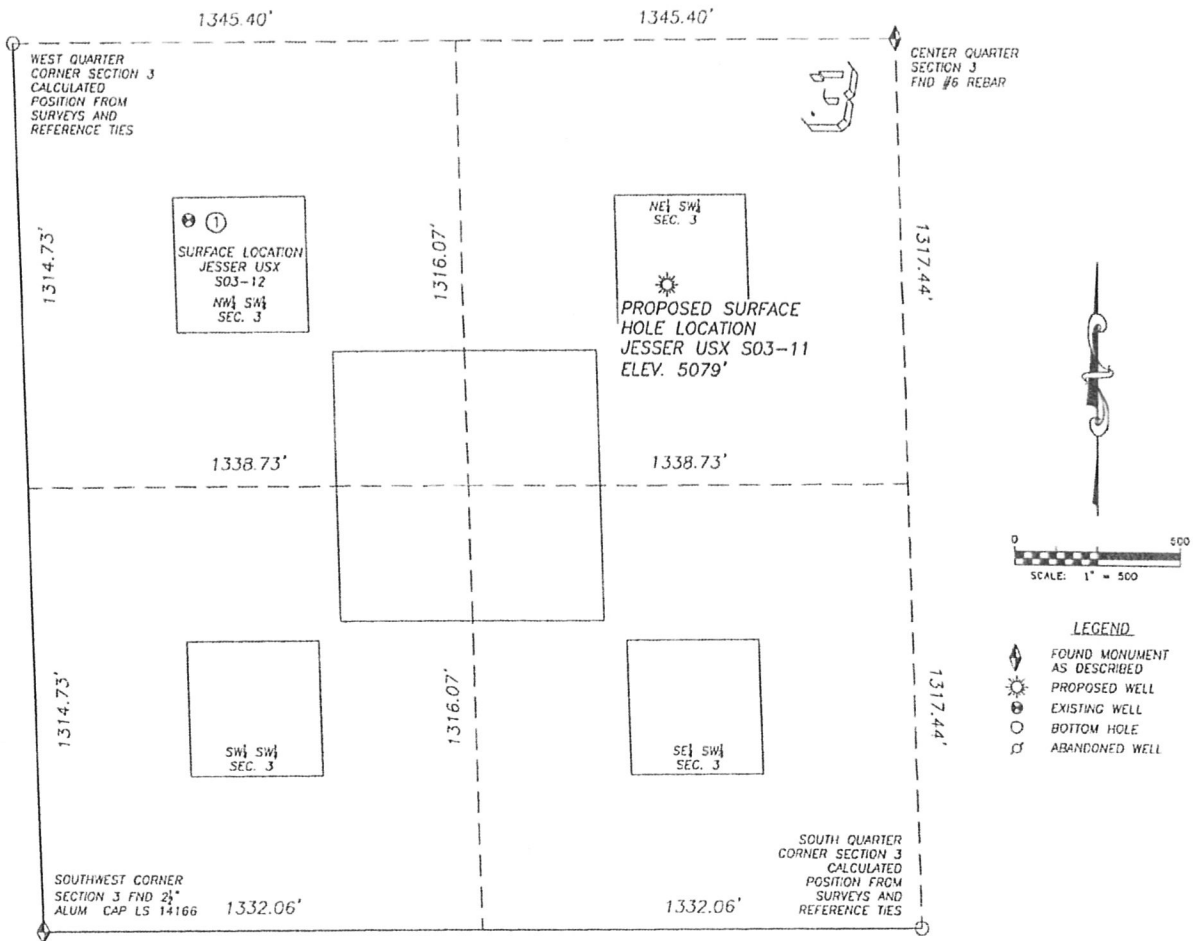
DALEY LAND SURVEYING, INC.

PARKER, CO. 80134

303 953 9841

SITE SKETCH JESSER USX S03-11

SECTION 3, TOWNSHIP 4 NORTH, RANGE 68 WEST OF THE 6TH PRINCIPAL MERIDIAN



①

JESSER USX S03-12
NW/SW SEC. 3
2104' FSL, 516' FWL
1468' WEST OF PROPOSED
SURFACE HOLE LOCATION
LAT. N40.34113°
LONG. W104.99733°
EL: 5117'
PDOP 2.4

NOTES:

1. THIS DOES NOT REPRESENT A BOUNDARY SURVEY
2. THE LATITUDES AND LONGITUDES SHOWN ARE REFERENCED TO NAD83
3. DATUM FOR ELEVATION IS NAVD88. ELEVATIONS ARE DERIVED FROM GPS-RTK OBSERVATIONS PROCESSED THROUGH OPUS, UTILIZING THE GEOID03 MODEL.