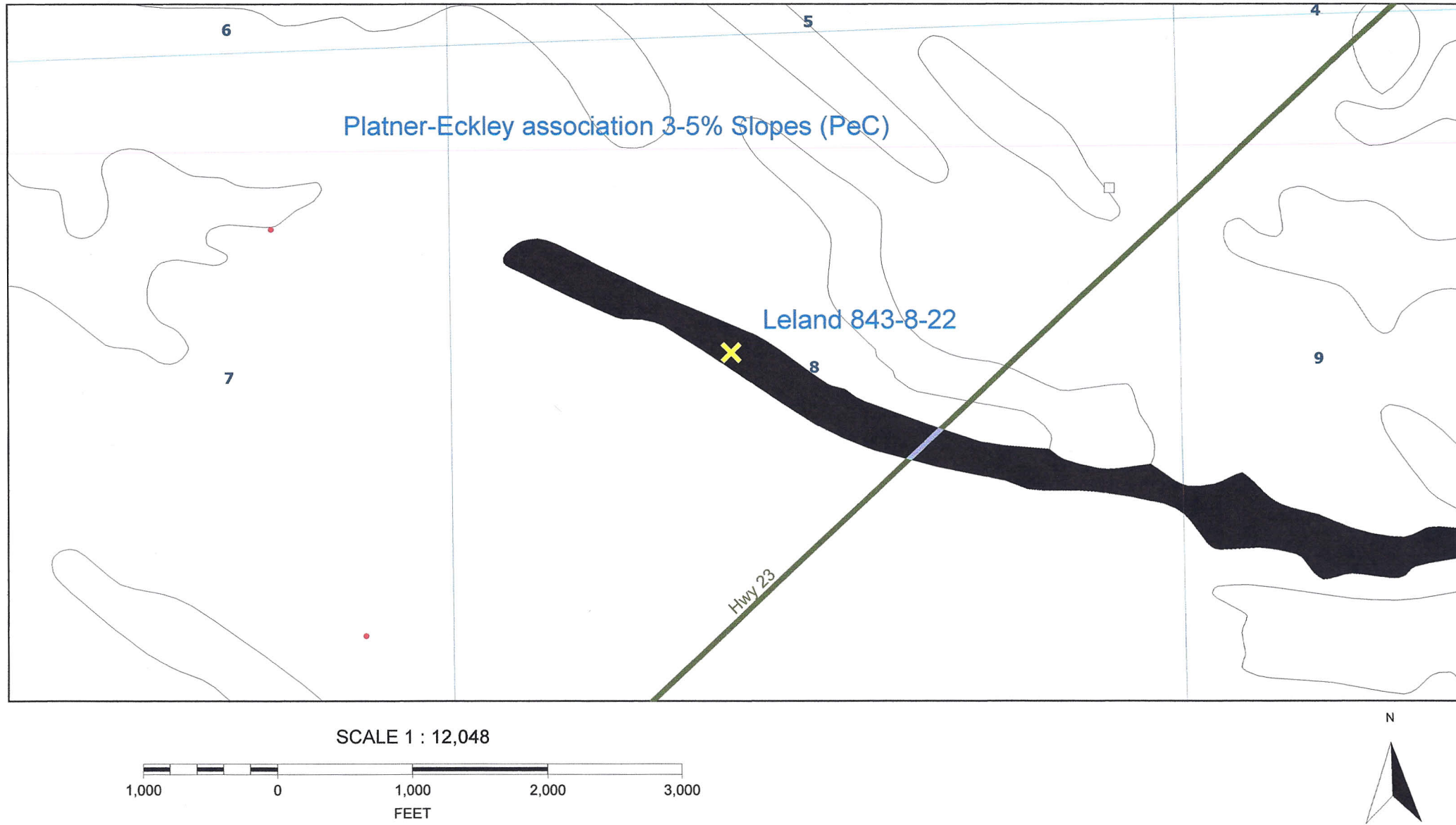


# T8N-R43W, Section 8: SE/4NW/4 - Leland 843-8-22



# Map Unit Description

Phillips County, Colorado

## PeC Platner-Eckley association, 3 to 5 percent slopes

### Setting

Elevation: 4200 to 6200 feet  
Mean annual precipitation: 15 to 19 inches  
Mean annual air temperature: 46 to 52 degrees F  
Frost-free period: 120 to 165 days

### Composition

Platner and similar soils: 60 percent  
Eckley and similar soils: 40 percent

### Description of Platner

#### Setting

Landform: Hills, ridges  
Down-slope shape: Linear  
Across-slope shape: Linear  
Parent material: Thin silty eolian deposits over sand & gravel

#### Properties and Qualities

Slope: 3 to 5 percent  
Drainage class: Well drained  
Capacity of the most limiting layer to transmit water (Ksat): Moderately low or moderately high (0.06 to 0.20 in/hr)  
Frequency of flooding: None  
Frequency of ponding: None  
Calcium carbonate maximum: 10 percent  
Gypsum maximum: 0 percent  
Available water capacity: Moderate (about 8.8 inches)

#### Interpretive Groups

Land capability classification (irrigated): 3e  
Land capability (non irrigated): 3e  
Ecological site: Loamy Plains (R072XY001CO)

#### Typical Profile

0 to 5 inches: loam  
5 to 12 inches: clay  
12 to 24 inches: clay loam  
24 to 60 inches: sandy clay loam

### Description of Eckley

#### Setting

Landform: Hills, ridges  
Down-slope shape: Linear  
Across-slope shape: Linear  
Parent material: Gravelly alluvium

#### Properties and Qualities

Slope: 3 to 5 percent  
Drainage class: Well drained  
Capacity of the most limiting layer to transmit water (Ksat): Moderately high or high (0.60 to 2.00 in/hr)  
Frequency of flooding: None  
Frequency of ponding: None  
Calcium carbonate maximum: 5 percent  
Gypsum maximum: 0 percent  
Available water capacity: Low (about 3.8 inches)

#### Interpretive Groups

Land capability (non irrigated): 4e  
Ecological site: Gravel Breaks (R072XY062CO)

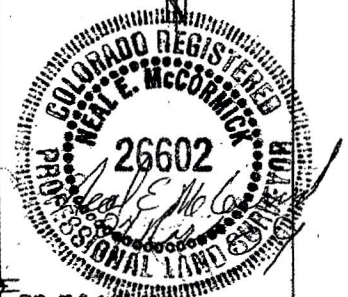
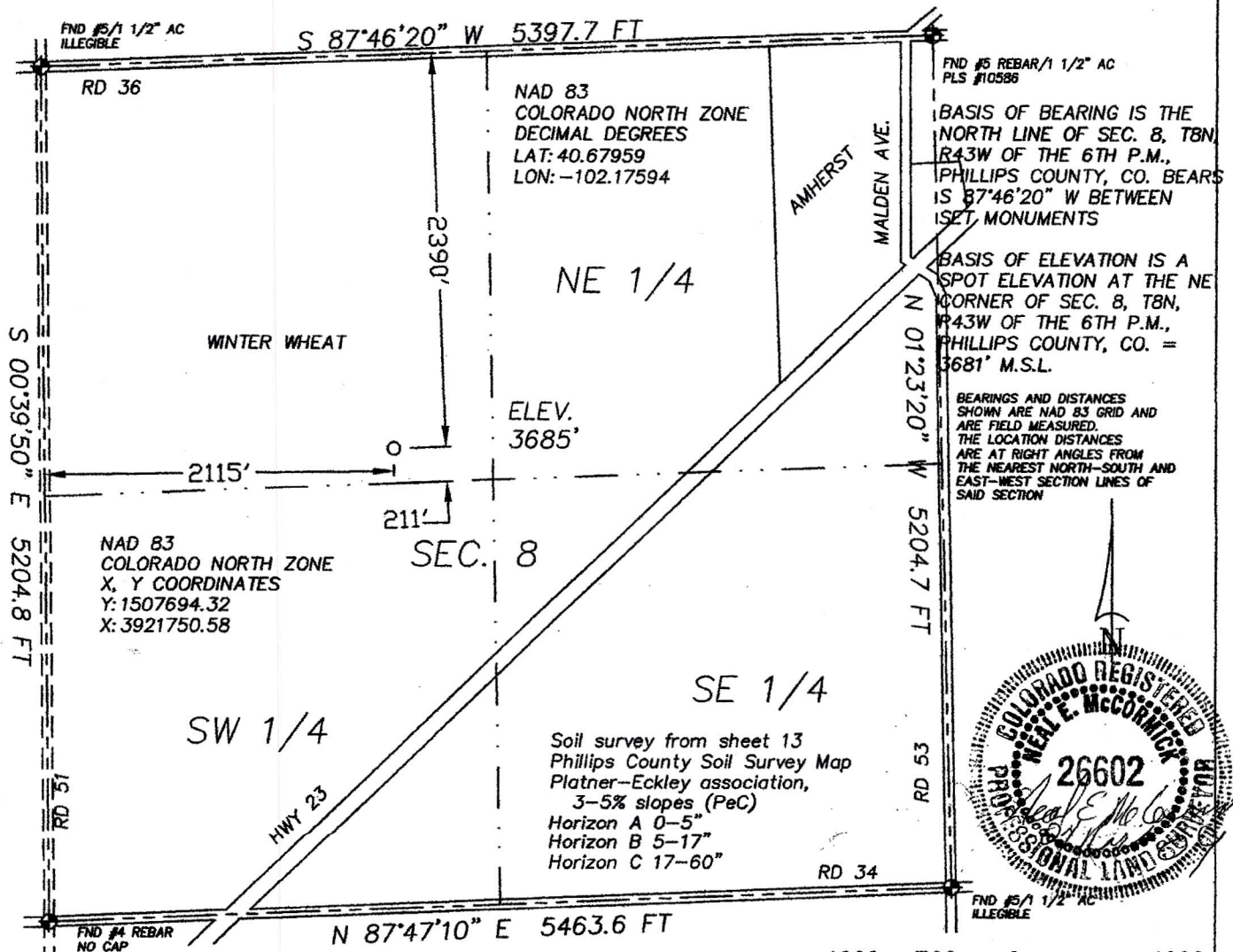
#### Typical Profile

0 to 4 inches: gravelly loam  
4 to 10 inches: gravelly sandy clay loam  
10 to 60 inches: very gravelly sand

## Map Unit Description

Phillips County, Colorado

The accompanying plat is an accurate representation showing the location of a proposed well. This location may be described as a point 2390 feet South of the North line, and 2115 feet East of the West line of Section 8, Township 8 North, Range 43 West of the 6th P.M., Phillips County, Colorado. The surface elevation at this point is 3685 feet m.s.l.  
 Note: This is not a land survey plat.  
 There are no visible improvements within 400 feet of the location



2.034 PDOP

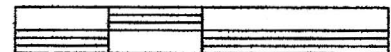
- ★ Dual Producer
- Oil well
- ☼ Gas Well
- Dry Hole

GPS OPERATOR: NEAL MCCORMICK

- Location
- Fence Line
- Half-Sec. Line
- Section Line

- == Road
- == Trail
- ◆ Survey Monument

1000 500 0 1000



Scale 1" = 1000'



GREAT PLAINS  
 SURVEYING, INC.

20575 C.R. 21 Phone 970-774-3602  
 HAXTUN, CO 80731 Fax 970-774-3601

DATE OF FIELD WORK:

03 NOVEMBER 2009

DATE OF DRAWING:

04 NOVEMBER 2009

LELAND 843-8-22

SE 1/4 NW 1/4 SEC. 8, T8N, R43W

BLACK RAVEN ENERGY, INC.

PHILLIPS COUNTY, COLORADO

W88N43GPS

9402-103